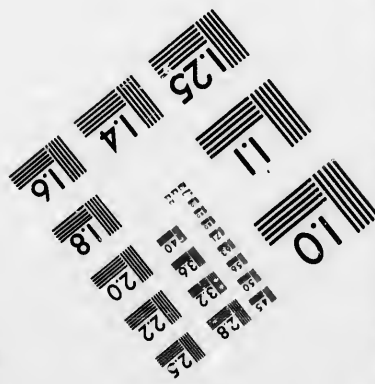
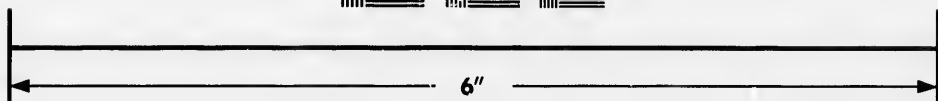
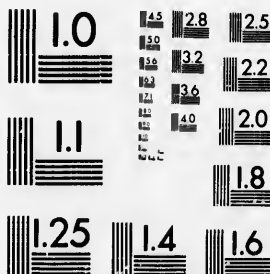


**IMAGE EVALUATION  
TEST TARGET (MT-3)**



**Photographic  
Sciences  
Corporation**

23 WEST MAIN STREET  
WEBSTER, N.Y. 14580  
(716) 872-4503

14  
16  
18  
20  
22  
25  
28  
32  
36  
40

**CIHM/ICMH  
Microfiche  
Series.**

**CIHM/ICMH  
Collection de  
microfiches.**



**Canadian Institute for Historical Microreproductions / Institut canadien de microreproductions historiques**

10  
11  
12  
13  
14  
15  
16  
17  
18  
19  
20  
21  
22  
23  
24  
25  
26  
27  
28  
29  
30  
31  
32  
33  
34  
35  
36  
37  
38  
39  
40

**© 1986**

Technical and Bibliographic Notes/Notes techniques et bibliographiques

The Institute has attempted to obtain the best original copy available for filming. Features of this copy which may be bibliographically unique, which may alter any of the images in the reproduction, or which may significantly change the usual method of filming, are checked below.

L'Institut a microfilmé le meilleur exemplaire qu'il lui a été possible de se procurer. Les détails de cet exemplaire qui sont peut-être uniques du point de vue bibliographique, qui peuvent modifier une image reproduite, ou qui peuvent exiger une modification dans la méthode normale de filmage sont indiqués ci-dessous.

Coloured covers/  
Couverture de couleur

Covers damaged/  
Couverture endommagée

Covers restored and/or laminated/  
Couverture restaurée et/ou pelliculée

Cover title missing/  
Le titre de couverture manque

Coloured maps/  
Cartes géographiques en couleur

Coloured ink (i.e. other than blue or black)/  
Encre de couleur (i.e. autre que bleue ou noire)

Coloured plates and/or illustrations/  
Planches et/ou illustrations en couleur

Bound with other material/  
Relié avec d'autres documents

Tight binding may cause shadows or distortion along interior margin/  
La reliure serrée peut causer de l'ombre ou de la distorsion le long de la marge intérieure

Blank leaves added during restoration may appear within the text. Whenever possible, these have been omitted from filming/  
Il se peut que certaines pages blanches ajoutées lors d'une restauration apparaissent dans le texte, mais, lorsque cela était possible, ces pages n'ont pas été filmées.

Additional comments:/  
Commentaires supplémentaires:

Coloured pages/  
Pages de couleur

Pages damaged/  
Pages endommagées

Pages restored and/or laminated/  
Pages restaurées et/ou pelliculées

Pages discoloured, stained or foxed/  
Pages décolorées, tachetées ou piquées

Pages detached/  
Pages détachées

Showthrough/  
Transparence

Quality of print varies/  
Qualité inégale de l'impression

Includes supplementary material/  
Comprend du matériel supplémentaire

Only edition available/  
Seule édition disponible

Pages wholly or partially obscured by errata slips, tissues, etc., have been refilmed to ensure the best possible image/  
Les pages totalement ou partiellement obscurcies par un feuillet d'errata, une pelure, etc., ont été filmées à nouveau de façon à obtenir la meilleure image possible.

PHOTOREPRODUCTION. (PRINTED EPHEMERA) 2 PAGES (VERSO BLANK)

This item is filmed at the reduction ratio checked below/  
Ce document est filmé au taux de réduction indiqué ci-dessous.

10X	14X	18X	22X	26X	30X
<input type="checkbox"/>	<input type="checkbox"/>	<input checked="" type="checkbox"/>	<input type="checkbox"/>	<input type="checkbox"/>	<input type="checkbox"/>
12X	16X	20X	24X	28X	32X

The copy filmed here has been reproduced thanks to the generosity of:

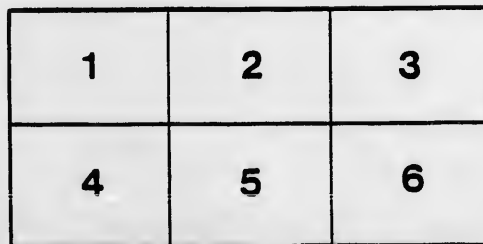
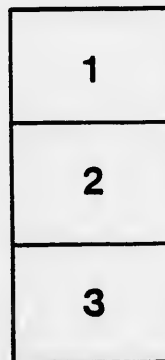
Archives of Ontario  
Toronto

The images appearing here are the best quality possible considering the condition and legibility of the original copy and in keeping with the filming contract specifications.

Original copies in printed paper covers are filmed beginning with the front cover and ending on the last page with a printed or illustrated impression, or the back cover when appropriate. All other original copies are filmed beginning on the first page with a printed or illustrated impression, and ending on the last page with a printed or illustrated impression.

The last recorded frame on each microfiche shall contain the symbol  $\rightarrow$  (meaning "CONTINUED"), or the symbol  $\nabla$  (meaning "END"), whichever applies.

Maps, plates, charts, etc., may be filmed at different reduction ratios. Those too large to be entirely included in one exposure are filmed beginning in the upper left hand corner, left to right and top to bottom, as many frames as required. The following diagrams illustrate the method:



L'exemplaire filmé fut reproduit grâce à la générosité de:

Archives of Ontario  
Toronto

Les images suivantes ont été reproduites avec le plus grand soin, compte tenu de la condition et de la netteté de l'exemplaire filmé, et en conformité avec les conditions du contrat de filmage.

Les exemplaires originaux dont la couverture en papier est imprimée sont filmés en commençant par le premier plat et en terminant soit par la dernière page qui comporte une empreinte d'impression ou d'illustration, soit par le second plat, selon le cas. Tous les autres exemplaires originaux sont filmés en commençant par la première page qui comporte une empreinte d'impression ou d'illustration et en terminant par la dernière page qui comporte une telle empreinte.

Un des symboles suivants apparaîtra sur la dernière image de chaque microfiche, selon le cas: le symbole  $\rightarrow$  signifie "A SUIVRE", le symbole  $\nabla$  signifie "FIN".

Les cartes, planches, tableaux, etc., peuvent être filmés à des taux de réduction différents. Lorsque le document est trop grand pour être reproduit en un seul cliché, il est filmé à partir de l'angle supérieur gauche, de gauche à droite, et de haut en bas, en prenant le nombre d'images nécessaire. Les diagrammes suivants illustrent la méthode.

ails  
du  
modifier  
une  
page

rrata  
co

pelure,  
n à



32X

# GREAT WESTERN RAILWAY

OF CANADA.



From Niagara Falls to Detroit,

AND LINES

FROM HAMILTON TO TORONTO.

FROM HARRISBURG TO GUELPH.

FROM KOMOKA TO SARNIA.

---

**PASSENGER TRAIN TIME TABLE.**

---

JANUARY, 1865.

---

GENERAL OFFICES OF THE COMPANY,

HAMILTON, C. W.



# RAILROADS & STAGES

## IN CONNECTION WITH TRAINS.

**SUBMERSON BRIDGE**, (Niagara Falls,) connects with New York Central, Niagara Falls, Canandaigua and Elmira, and New York and Erie Railroads.

**ST. CATHERINES**—Stages run daily, (Sundays excepted,) for Town of Niagara; connects with Welland Railway, at St. Catharines for Allanburgh, Port Robinson, and Merrittsville.

**GRANDY**—Stages run daily to Smithville, and to Welland Port on Tuesdays, Thursdays and Saturdays; returning to Smithville same p. m.

**TORONTO**—All Passenger Trains of Great Western and Grand Trunk Railways start from and arrive at Union Station, York Street, Toronto. Great Western Trains connect at Toronto with Grand Trunk Trains to and from Montreal, Quebec and Portland.

**PORT CREDIT**—Stages run to Cooksville, Springfield and Streetsville, daily.

**BRONTE**—Stages run to Palermo, Milton, &c., connecting with the Trains East and West.

**PRESTON**—Stages leave daily for Berlin, connecting there with Stages for Waterloo, St. Jacob's, Elmira, West Woolwich, Allansville, Hawksville, Bridgeport, Woolwich, Winterbourne, Heidelberg, St. Clements, Crosshill, Munheam and Millbank. (Sundays excepted.)

**GUELPH**—Stages run daily between Elora, Fergus, Arthur, Mount Forest, Durham and Owen Sound.

**PARIS**—Connects with Buffalo and Lake Huron R. R. Stages run daily, (Sundays excepted) between Paris Station and Brantford in connection with Trains East and West, and between Bradford Gore Hotel and Paris Station, and Simcoe, Ayr, Scotland and Burford.

**INGERSOLL**—Stages run daily, (Sundays excepted,) from Ingersoll to Salford, Mount Elgin, Tilsonburgh, Eden, Straffordville, Vienna and Port Burwell.

**LONDON**—Stages leave City daily, (Sundays excepted,) at 8.30 a. m. for Goderich, St. Mary's, Strafford, and intermediate places. For Delaware, at 4 p. m., and on Tuesdays and Fridays at 2 p. m., for Nairn. **LONDON AND PORT STANLEY** Railway Trains leave London for St. Thomas and Port Stanley at 7.00 a. m. and 4 p. m., and from Port Stanley reach London at 10.45 a. m. and 6.30 p. m.

**SARNIA**—A Stage leaves for Balry Point on Tuesday, Thursday and Saturday; returning on alternate days.

**CHATHAM**—Stages run daily, (Sundays excepted), between the 'Royal Exchange,' Chatham, and Thompson's Hotel, St. Thomas, via Morpeth and the Lake Shore.

**DETROIT**—Direct Connections are made with all Express Trains of the following Railroads: **MICHIGAN CENTRAL, DETROIT AND MILWAUKEE, MICHIGAN SOUTHERN**, forming the direct, popular and reliable route to Chicago, Milwaukee, Toledo, Cincinnati, Saginaw, Prairie du Chien, Rock Island, Burlington, Quincy, Dunleith, La Crosse, Oshkosh, St. Paul, St. Louis, St. Joseph, and all points in the West, South and North-West. Baggage checked through.

The Company will not be responsible for the accuracy of the hours of departure and arrival, or regularity of the Trains of other Companies, nor of Stages, as stated in this Table, as they are subject to alterations and delays, over which this Company has no control.

It is particularly requested that any incivility or want of attention on the part of any of the Company's Employes, may be immediately communicated to the undersigned.

**THOS. SWINYARD**, General Manager.

Great Western Railway Offices,  
Hamilton January, 1865.

**OFFICERS**  
**THOMAS SWINYARD**, General Manager.  
**JOSEPH PRICE**, Treasurer.  
**WILLIAM WALLACE**, Traffic Superintendent.  
**G. B. SPRIGGS**, Through Freight Agent.  
**WM. ORR**, Freight Superintendent, Eastern Division.  
**J. PEACOCK**, Freight Superintendent, Western Division.  
**JAMES CHARLTON**, General Agent.

### DIFFERENCE OF TIME

Great Western Railway Trains run by Hamilton time; Toronto time is two minutes faster.

Grand Trunk Railway Trains run by Montreal time, which is twenty-five minutes faster.

Buffalo & Lake Huron Railway Trains run by Buffalo time, which is fifteen minutes faster.

New York Central Railway Trains run by Albany time, which is thirty minutes faster.

Michigan Central Railway Trains run by Chicago time, which is thirty minutes slower.

Detroit & Milwaukee Railway Trains run by Detroit time, which is fifteen minutes slower.

**TICKETS**—Passengers are requested to purchase Tickets at the Station before the Trains arrive. The Ticket Office will be open not later than 15 minutes before each Train is due, and Station Masters have orders not to delay trains an instant to issue a Ticket when a Passenger is late.

A deduction of Ten Cents will be made from the regular fare on all Tickets bought at the Company's Ticket Offices; but Passengers purchasing Tickets on the Cars will be charged the full fares.

Passengers are requested to keep their Tickets in sight when the Conductor is passing through the Cars.

Sleeping-Car Tickets, price 75 cents each.  
 Railway Tickets are not transferable, and persons transferring Tickets or attempting to travel on such Tickets, render themselves liable to prosecution.

Tickets will not be recognized on Trains except travelled upon from the place named on the Ticket.

The Public are respectfully cautioned against the purchase of Railway Tickets from Runners and other unauthorized persons.

**PASSENGERS' BAGGAGE**—Passengers are respectfully informed that before they can have their Baggage Checked they must first procure their Tickets at the Ticket Office, and show them to the Station Baggage Master. Passengers are allowed to carry 100 lbs. of personal baggage free of charge.

Passengers are respectfully informed that on no account whatever will Baggage be checked, unless the owner produces a Ticket, purchased at the Station from which he intends to start, and then only will it be checked to the Station to which the Ticket is good; when Passengers, however, produce "Lay-over" Tickets, presented within the prescribed time, as shown on the face thereof, their baggage will be checked, as requested.

The attention of Through Passengers is particularly directed to the necessity of Checking any Baggage containing articles subject to Duty, and not take the same with them into the Cars. Passengers neglecting this precaution may be subject to great inconvenience.

**NOTICE**—Passengers are particularly cautioned against getting on or off the Cars whilst the Train is in motion. The Company will not be responsible for any Accident arising from this cause.

Passengers are respectfully requested to keep their seats, and not put their heads or arms out of the windows.

The Cars are well ventilated, and, provided the windows are kept shut, quite free from dust.

Passengers are requested not to put their feet upon the Cushions. Smoking is not allowed in the Cars nor on the Company's premises. No fees or gratuities are allowed to be received by any of the Company's servants.

## GOING WEST.

Niagara Falls to Hamilton, Toronto, Guelph, Paris, London, Windsor and Sarnia.

Distance from S. Bridge.	STATIONS.	Mixed.	Detroit	Toron'o	Lon don
			Chica's &c. Exp.	Sarnia, &c. Exp.	&c., Accom.
			A. M.	P. M.	
	N. FALLS, (N. Y. C.).....ar		6.30		8.05
	SUS. BRIDGE (Canadian Time) de		7.00		8.35
9½	Thorold.....		7.23		8.58
11½	St. Catharines.....		7.28		4.03
17	Jordan.....		7.42		4.20
22½	Beamsville.....		7.55		4.32
28½	Grimsby.....		8.05		4.42
31½	Ontario.....		8.17		4.55
43½	HAMILTON, }.....ar		8.45	P. M.	5.25
	de		9.00	2.10	5.40
49½	Dundas.....		9.20	2.27	6.00
54½	Copetown.....		9.35		6.20
59	Lynnden.....		9.47		6.32
62½	Harrisburg.....		9.55		6.40
72	PARIS.....		10.20	3.23	7.07
79	Princeton.....		10.37	3.37	7.25
81½	Arnolds.....		10.43		7.32
86½	Eastwood.....		10.55		7.45
90½	Woodstock.....		11.07	4.05	7.59
95½	Beachville.....		11.20		8.10
100	Ingersoll.....		11.30	4.25	8.23
109½	Dorchester.....		11.55		8.50
			P. M.		
119½	LONDON, }.....ar	A. M.	12.20	5.10	9.15
	de		7.05	12.40	
129½	Komoka.....		7.40	1.05	
134	Mt. Brydges.....		7.55	1.15	
140	Longwood.....		8.17	1.30	
145	Appin.....		8.35		
149½	Glencoe.....		8.50	1.53	
155½	Newbury.....		9.15	2.03	
161	Bothwell.....		9.35	2.20	
168½	Thamesville.....		10.05	2.37	
174½	Lewisville.....		10.30		
182½	CHATHAM.....		11.07	3.15	
193	Baptiste Creek.....		12.08	3.50	
203	Stoney Point.....		12.40	4.00	
211½	Belle River.....		1.10	4.20	
229	WINDSOR, for } Canadian Time, ar.		2.15	5.00	
	DETROIT, }				

## SARNIA LINE.

LONDON TO SARNIA.

SARNIA TO LONDON.

Frm London.	STATIONS.	Mixed.	From Sarnia.	STATIONS.	Mixed.
10	LONDON.....de	P. M.		SARNIA.....de	A. M.
	Komoka.....	5.15		Mandaamin.....	7.50
20½	Strathroy.....	5.50	9½	Wyoming.....	8.20
26½	Kerwood, [late C. Road].....	6.30	15½	Wanstead.....	8.45
33½	Watford.....	6.53	19½	Walford.....	9.00
41½	Wanstead.....	7.21	27½	Kerwood, late C. Road.....	9.26
45½	Wyoming.....	7.50	34	Strathroy.....	9.50
51½	Mandaamin.....	8.10	40½	Komoka.....	10.24
61	SARNIA.....ar	8.30	51	LONDON.....ar	10.50
		9.00	61		11.30

\* Connect with Trains of Main Line.

## GREAT CENTRAL

TO AND FROM

NEW YORK, BUFFALO, BOSTON  
MILWAUKEE.

Express Trains East & West: Clear

SPEED, SAFETY AND COMFORT SECURED

REFRESHMENT

AT SUSP. BRIDGE, HAMILTON, LONDON,  
pany's Splendid Ferry Boat "UNION," on De  
Money taken at Par. Good Meals and Suf

TICKETS ISSUED

CHICAGO, MILWAUKEE, ST. PAULS, ST. L  
YORK, BOSTON, KINGSTON, MONTREAL,  
Principal Points EAST and

Emigrant Train leaving Suspension Bridge  
and Cattle Train leaving Windsor at 3.10 p. m. fo  
a Passenger Car attached for the accommodation

TORONTO L

HAMILTON, &c., TO TOR

From Ham-ilton.	STATIONS GOING EAST.	Acco.
	HAMILTON.....de	A. M.
1½	Burlington Junction.....	7.1
4	Waterdown.....	7.2
7	Wellington Square.....	7.4
13½	Bronte.....	8.0
17½	Oakville.....	8.1
25½	Port Credit.....	8.4
32	Mimico.....	9.0
39	TORONTO, Union Station.....ar	9.3

TORONTO, &c., TO HAM

From Tor'nto	STATIONS GOING WEST.	Acco.
	TORONTO, Union Station.....de	A.
7	Mimico.....	7.2
13½	Port Credit.....	7.4
21½	Oakville.....	8.0
25½	Bronte.....	8.3
32	Wellington Square.....	8.4
35	Waterdown.....	8.4
37½	Burlington Junction.....	9.0
39	HAMILTON.....ar	9.3

\* Connect with Trains on Main



# CENTRAL ROUTE

TO AND FROM

BUFFALO, BOSTON, CHICAGO AND MILWAUKEE.

East & West: Close connections.

AND COMFORT SECURED.—ELEGANT CARS.

SMOKING ROOMS!

HAMILTON, LONDON, and on board the Company Boat "UNION," on Detroit River. American Good Meals and Sufficient Time allowed.

TICKETS ISSUED TO

MILWAUKEE, ST. PAULS, ST. LOUIS, BUFFALO, NEW YORK, KINGSTON, MONTREAL, QUEBEC, and all other Principal Points EAST and WEST.

Leaving Suspension Bridge at 5.30 p. m. for London, and returning Windsor at 3.10 p. m. for London, will each have ample time for the accommodation of Passengers.

## TORONTO LINE.

HAMILTON, &c., TO TORONTO.

STATIONS GOING EAST.	Accom.		Toron'o Express	
	A.M.	A.M.	P.M.	P.M.
..... de	7.15	9.50	2.55	7.25
.....	7.28	10.00	.....	7.35
.....	7.40	10.16	3.13	7.45
.....	8.00	10.35	3.26	8.05
.....	8.17	10.45	3.40	8.16
.....	8.45	11.05	4.00	8.40
.....	9.05	11.22	.....	9.00
Station..... ar	9.30	11.40	4.35	9.20

TORONTO, &c., TO HAMILTON.

STATIONS GOING WEST.	London Express		Accom.	
	A.M.	P.M.	P.M.	P.M.
Station..... de	7.20	12.30	4.00	7.45
.....	7.40	.....	4.18	8.10
.....	7.58	1.04	4.34	8.36
.....	8.20	1.20	4.53	9.05
.....	8.30	1.29	5.02	9.17
.....	8.50	1.43	5.16	9.36
.....	8.58	.....	5.25	9.47
.....	9.05	.....	.....	.....
..... ar	9.16	2.00	5.35	10.00

\* Connect with Trains on Main Line.

# GOING EAST.

Windsor to Sarnia, London, Paris, Guelph, Toronto, Hamilton and Niagara Falls.

Distance from Windsor.	STATIONS.	N. Deid' Buffalo, &c. Acc.		Sarnia, N. York, Toron'o Boston, &c. Exp.		Mixed.	
		A.M.	P.M.	A.M.	P.M.	A.M.	P.M.
17½	DETROIT	.....	.....	.....	.....	.....	.....
26	WINDSOR	.....	.....	11.00	12.10	.....	.....
31	Belle River	.....	.....	11.45	1.10	.....	.....
45½	Stoney Point	.....	.....	12.05	1.45	.....	.....
64½	Baptiste Creek	.....	.....	12.18	2.08	.....	.....
60½	CHATHAM	.....	.....	12.55	2.05	.....	.....
68	Lewisville	.....	.....	.....	3.45	.....	.....
73½	Thamesville	.....	.....	1.22	4.05	.....	.....
79½	Bothwell	.....	.....	1.52	4.30	.....	.....
84	Newbury	.....	.....	2.04	5.00	.....	.....
89	Glencoe	.....	.....	2.22	5.10	.....	.....
95	Appin	.....	.....	.....	5.28	.....	.....
99½	Longwood	.....	.....	2.41	5.47	.....	.....
109½	Mount Brydges	.....	.....	3.00	6.10	.....	.....
119½	Komoka	.....	.....	3.12	6.28	.....	.....
129	LONDON	..... ar	A.M. 6.45	A.M. 11.45	4.00	.....	.....
133½	Dorchester	..... de	7.10	P.M. 4.23	.....	.....	.....
138½	Ingersoll	.....	7.35	12.30	4.50	.....	.....
142½	Beachville	.....	7.45	.....	5.00	.....	.....
147½	Woodstock	.....	8.00	12.50	5.12	.....	.....
160	Eastwood	.....	8.10	.....	5.24	.....	.....
167	Arnolds	.....	8.23	.....	5.35	.....	.....
166½	Princeton	.....	8.30	1.17	5.42	.....	.....
170	PARIS	.....	8.48	1.33	5.58	.....	.....
174½	HARRISBURG	.....	9.15	.....	6.23	.....	.....
179½	Lynden	.....	9.23	.....	6.32	.....	.....
185½	Copetown	.....	9.35	2.13	6.43	.....	.....
197½	Dundas	.....	9.47	2.25	6.58	.....	.....
202½	HAMILTON	..... ar	10.05	2.45	7.15	.....	.....
206½	Ontario	..... de	10.15	.....	7.25	.....	.....
212	Grimby	.....	10.45	.....	7.55	.....	.....
217½	Beamsville	.....	11.00	.....	8.07	.....	.....
219½	Jordan	.....	11.10	.....	8.20	.....	.....
229	St. Catharines	.....	11.25	.....	8.33	.....	.....
	Thorold	.....	11.40	.....	8.48	.....	.....
	SUS. BRIDGE	..... ar	11.45	.....	8.55	.....	.....
	N. FALLS, (N.Y.C.)	..... ar	12.10	.....	9.20	.....	.....
			P.M.		9.25		
			12.15				

Accommodation Trains connect at N. Falls with Trains to and from Buffalo

# GUELPH LINE.

TO GUELPH, &c.

FROM GUELPH, &c.

From Harrisburg.	STATIONS.	Mixed.		From Guelph.	STATIONS.	Mixed.	
		*	*			*	*
	HARRISBURG..... de	A.M. 10.05	P.M. 6.50		GUELPH..... de	A.M. 7.30	P.M. 4.20
6	Branchton..... de	10.35	7.20	8	Hespeler..... de	7.57	4.50
12	Galt..... de	11.00	7.45	16½	Preston..... de	8.10	5.05
16	Preston..... de	11.17	8.00	21½	Galt..... de	8.24	5.20
19½	Hespeler..... de	11.34	8.18	27½	Branchton..... de	8.45	5.46
27½	GUELPH..... ar	12.00	8'40		HARRISBURG..... ar	9.05	6.10

\* Connect with Trains on Main Line.



