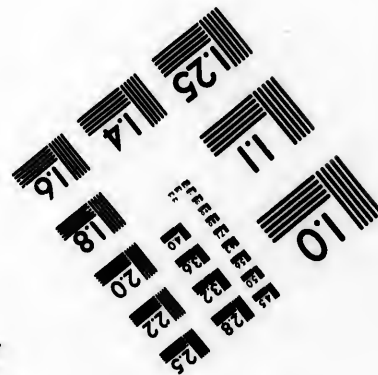
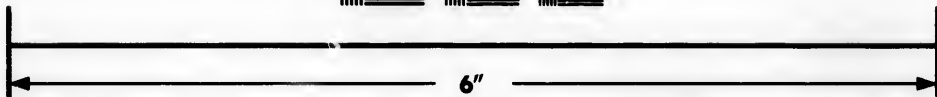
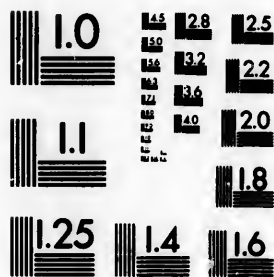


**IMAGE EVALUATION
TEST TARGET (MT-3)**



**Photographic
Sciences
Corporation**

23 WEST MAIN STREET
WEBSTER, N.Y. 14580
(716) 872-4503

1.8
2.0
2.2
2.5
2.8
3.2
3.6
4.0
4.5
5.0
5.6
6.3
7.1
8.0
9.0
10.0
11.2
12.5
14.0
16.0
18.0
20.0
22.5
25.0
28.0
32.0
36.0
40.0
45.0
50.0
56.0
63.0
71.0
80.0
90.0
100.0

**CIHM/ICMH
Microfiche
Series.**

**CIHM/ICMH
Collection de
microfiches.**



Canadian Institute for Historical Microreproductions / Institut canadien de microreproductions historiques

01
10
11
12
13
14
15
16
17
18
19
20
21
22
23
24
25
26
27
28
29
30
31
32
33
34
35
36
37
38
39
40
41
42
43
44
45
46
47
48
49
50
51
52
53
54
55
56
57
58
59
60
61
62
63
64
65
66
67
68
69
70
71
72
73
74
75
76
77
78
79
80
81
82
83
84
85
86
87
88
89
90
91
92
93
94
95
96
97
98
99
100

© 1986

The copy filmed here has been reproduced thanks to the generosity of:

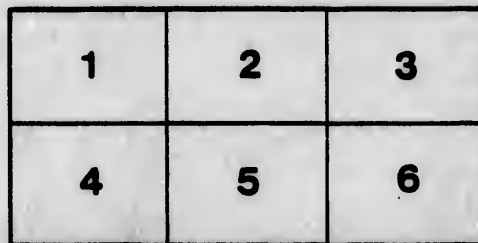
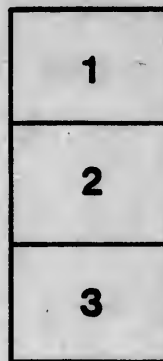
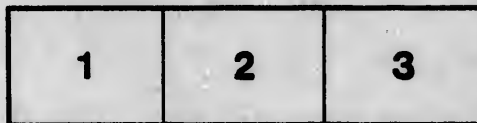
D. B. Weldon Library
University of Western Ontario
(Regional History Room)

The images appearing here are the best quality possible considering the condition and legibility of the original copy and in keeping with the filming contract specifications.

Original copies in printed paper covers are filmed beginning with the front cover and ending on the last page with a printed or illustrated impression, or the back cover when appropriate. All other original copies are filmed beginning on the first page with a printed or illustrated impression, and ending on the last page with a printed or illustrated impression.

The last recorded frame on each microfiche shall contain the symbol \rightarrow (meaning "CONTINUED"), or the symbol ∇ (meaning "END"), whichever applies.

Maps, plates, charts, etc., may be filmed at different reduction ratios. Those too large to be entirely included in one exposure are filmed beginning in the upper left hand corner, left to right and top to bottom, as many frames as required. The following diagrams illustrate the method:



L'exemplaire filmé fut reproduit grâce à la générosité de:

D. B. Weldon Library
University of Western Ontario
(Regional History Room)

Les images suivantes ont été reproduites avec le plus grand soin, compte tenu de la condition et de la netteté de l'exemplaire filmé, et en conformité avec les conditions du contrat de filmage.

Les exemplaires originaux dont la couverture en papier est imprimée sont filmés en commençant par le premier plat et en terminant soit par la dernière page qui comporte une empreinte d'impression ou d'illustration, soit par le second plat, selon le cas. Tous les autres exemplaires originaux sont filmés en commençant par la première page qui comporte une empreinte d'impression ou d'illustration et en terminant par la dernière page qui comporte une telle empreinte.

Un des symboles suivants apparaîtra sur la dernière image de chaque microfiche, selon le cas: le symbole \rightarrow signifie "A SUIVRE", le symbole ∇ signifie "FIN".

Les cartes, planches, tableaux, etc., peuvent être filmés à des taux de réduction différents. Lorsque le document est trop grand pour être reproduit en un seul cliché, il est filmé à partir de l'angle supérieur gauche, de gauche à droite, et de haut en bas, en prenant le nombre d'images nécessaire. Les diagrammes suivants illustrent la méthode.

ails
du
diffier
une
page

ata

ature,
à

2X

KERWOOD
TURNING and BENDING
FACTORY.

Revised Price List
No 10, for 1891-2.

S. P. MORGAN,

Manufacturer and Dealer in

Woods, Turning and Bent Stuff,

Kerwood, Ont.

.....
STRATHROY,
PRINTED BY G. M. HALDANE.

20 70

..... 18

Please enter our order for the following goods, f.o.b. cars at Kerwood :

Addressed

..... Station,

.....
To be forwarded by G. T. R. and such other routes as you consider best, unless otherwise directed.

TERMS—Notes on delivery of goods, payable at 4 months, or a 3 % discount allowed for Cash ; after that date interest at the rate of 10 % per annum allowed only for cash from date of payment to maturity of account, and 1 per cent. per month charged on all overdue accounts. All claims for errors must be made 10 days after receipt of goods, or will not be allowed.

N. B.—We are not responsible for safe carriage or delivery of goods. After shipment from our warehouse they are at purchasers' risk, whose recourse is against the carrier. Purchasers should make immediate application to the carrier for adjustment of claims arising through damage or deficiency.

PRICE - LIST - NO. 10.

—PREVIOUS LISTS CANCELLED.—

Confidential List to Hardware Men.

	PER DOZ.	XX	XXX
Farm neck yokes, 3 ft 6		\$2.50	\$3.00
Petrolea yokes, 4 ft,		3.00	3.25
Larry yokes, 4 ft 6,		3.25	3.50
do do 5 ft,		3.50	4.00
Heavy whiffletrees, 3 ft,		1.20	1.60
Petrolea do 3 ft to 3 ft 4,		1.40	1.75
do doubletrees, heavy, 4 ft,		3.25	3.75
Farm do 4 ft,		2.50	3.00
Larry do 4 ft 6,		3.25	3.50
Larry do 5 ft,		3.50	4.00
Larry singletrees, oval, 3 ft 6,		2.50	3.00
Oval whiffletrees,		2.25	2.50

WAGON WORK.

Wagon axles, 3 1/2 x 4 1/2, maple,	2.75	3.00
Wagon axles, 4 x 5, maple,	3.00	3.25
Wagon axles, 4 x 5 1/2, maple,	3.25	3.50
Wagon axles, 4 1/4 x 6, maple,	3.50	3.75
Wagon poles, ash, 3 1/2 x 3 3/4 x 2 1/4,	3.60	4.20
Wagon poles, ash, 4 x 4 x 2 1/2,	4.20	4.80
Wagon bolsters, maple, 4 x 5,	2.40	2.50
Wagon bolsters, oak, 4 x 4,	2.50	2.75
Wagon bolsters, 3 x 4,	2.25	2.50
Sandboards, 4 x 4,	2.40	2.50
Tongue hounds,	1.20	1.40
Tongue crossbars,	1.00	1.10

Wagon Work, Continued.

Front hounds,	1.40	1.50
Sway bars,	1.40	1.50
Hind or crotch hounds.	1.40	1.50
Reaches,	4.00	5.00
Sawed felloes,	1.50	1.75
Wagon gear, complete, without wheels, per set,	2.50	2.75

BUGGY WOODWORK.

Side bars, hickory, per set,	.35	.45
Side bars, natural bend, sec g ash,	.40	.50
Surrey bars, hickory,	.50	.60
Surrey bars, natural bend, s g ash,	.60	.70
Axle beds, per pair,	.30	.40
Spring bars, hickory or ash, pair,	.20	.25
Head blocks, hickory or s g ash, ea,	.12	.14
Reaches, hickory or s g ash, each,	.10	.13
Buffalo gears, per set,	1.00	1.20

Per Dozen.

Buggy & Carriage yokes, 3ft 6, s g ash,	2.25	2.50
do 4ft, do	2.50	2.75
do 3ft 6, leathr'd	8.00	9.00
do 4ft, leathered,	9.00	10.00
Buggy poles, 2 x 2 1/2, hickory,	5.00	6.00
Buggy poles, 2 x 3, hickory,	6.00	7.00
Buggy singletrees, 3 ft 4, 1 3/8 x 1 7/8,	1.20	1.40
Buggy singletrees, 3 ft 4, 1 1/2 x 2,	1.25	1.45
Lazy backs, 5 in wide, soft elm,	1.20	1.40
Lazy backs, 10 in wide, soft elm,	2.40	2.80
Ex Wagon trees, 3 ft 6, 2 1/2 x 1 3/4,	1.35	1.50
Light Wagon trees. 3. ft, 2 3/4 x 2,	1.30	1.40

Buggy Woodwork, Continued.

Light pole trees, 2ft 10, $1\frac{3}{8}$ x $1\frac{7}{8}$,	1.20	1.40
Dem trees, 3ft 4, $1\frac{1}{2}$ x $2\frac{1}{4}$,	1.30	1.50
Dem pole trees, 2ft 10, $1\frac{1}{2}$ x 2,	1.20	1.40
Light pole doubletrees. finished,	2.40	2.60
Dem pole doubletrees, finished,	2.50	2.70
Light cross bars, 4 ft, $1\frac{1}{2}$ x 2, fin.	1.50	1.60
Dem cross bars, 4 ft, $1\frac{1}{2}$ x $2\frac{1}{2}$, fin.	1.60	1.70
Buggy Jacks,	3.50	4.00

WHITE ASH FORK HANDLES—STRAIGHT.

	No. 1.	Extra.	2nd growth.
6 ft. per dozen,	\$1.10	\$1.25	\$1.50
$5\frac{1}{2}$ ft. per dozen,	1.00	1.10	1.35
5 ft. per dozen,	.90	1.00	1.25
$4\frac{1}{2}$ ft. per dozen,	.80	.90	1.15
5 ft. Garden rake handles,		.80	1.05
Hoe handles,		.80	1.05

EXTRA AND SECOND GROWTH—BENT.

	PER DOZEN.	Extra.	2nd growth.
Fork handles, 6 ft,		\$1.40	\$1.65
Fork handles, $5\frac{1}{2}$ ft,		1.25	1.50
Fork handles, 5 ft,		1.05	1.30
Fork handles, $4\frac{1}{2}$ ft,		1.05	1.30
Long Manure fork handles, chuck,	1.20		1.45
Long shovel and spade handles,	1.40		1.65
D top manure fork, c,	2.00		2.25
Manure fork handles, without D top,	.90		1.15
D top shovel and spade handles,	2.00		2.25
Chucking, add 10 cents per dozen.			

SUNDRIES.

	Per Dozen.	xx	xxx
Plow rungs,30		.40
Auger handles,45		.55
Mens' base ball bats, ash,	2.00		2.50
Mens' base ball bats, basswood, ...	1.75		2.00
Boys' bats,	1.00		1.25
T'nners' mallets. 2nd growth ash, ...	1.25		1.50
Carpenters' mallets, s g ash,	2.50		3.00
Snow shovels,	2.75		3.00
Cant hook handles, maple,	2.50		3.00
Rolling pins,	1.00		1.50
Potato mashers,90		1.00
Moulders' mallets,90		1.00
Moulders' Rammers,90		1.00
Solder iron handles,20		.25
Sledge handles, 32 to 36 in, s g h.	2.25		2.75
Hammer handles, 14 to 18, s g h.	1.00		1.25
Horse pokes, style A,	3.50		4.00
Table Legs, 2 ½, per set,	.35		.40
Table Legs, 3, per set,	.40		.45
Table Legs, 3 ½, per set,	.45		.50
Table Legs, 4, per set,	.50		.55
Stand Legs, 2 in,	.25		.30
Swinging clubs, per pair, 2 in, 20 c ; 3 in 35 c ; 4 in 50 c ; 5 in 65 c ; 6 in 80 c.			
Prices for Basswood, Maple, White Ash, Oak, and Soft Elm lumber on application.			

S. P. Morgan, Kerwood, Ont,

MANUFACTURER AND DEALER.

xxx

.40

.55

2.50

2.00

1.25

1.50

3.00

3.00

3.00

1.50

1.00

1.00

1.00

.25

2.75

1.25

4.00

.40

.45

.50

.55

.30

35 c ;

Oak,

