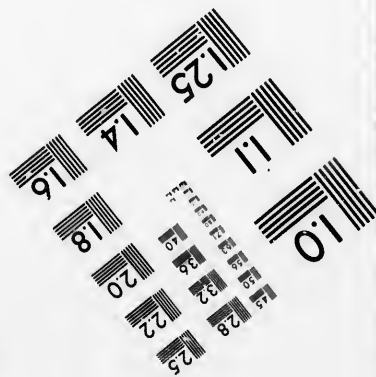
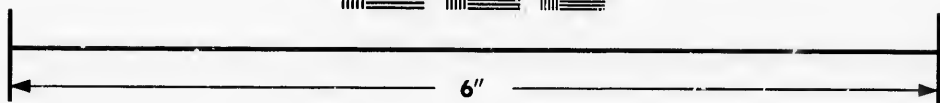
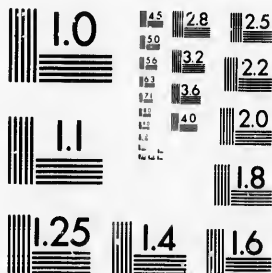


**IMAGE EVALUATION
TEST TARGET (MT-3)**



**Photographic
Sciences
Corporation**

23 WEST MAIN STREET
WEBSTER, N.Y. 14580
(716) 872-4503

**CIHM/iCMH
Microfiche
Series.**

**CIHM/ICMH
Collection de
microfiches.**



Canadian Institute for Historical Microreproductions / Institut canadien de microreproductions historiques

© 1986

Technical and Bibliographic Notes/Notes techniques et bibliographiques

The Institute has attempted to obtain the best original copy available for filming. Features of this copy which may be bibliographically unique, which may alter any of the images in the reproduction, or which may significantly change the usual method of filming, are checked below.

L'Institut a microfilmé le meilleur exemplaire qu'il lui a été possible de se procurer. Les détails de cet exemplaire qui sont peut-être uniques du point de vue bibliographique, qui peuvent modifier une image reproduite, ou qui peuvent exiger une modification dans la méthode normale de filmage sont indiqués ci-dessous.

- | | |
|--|--|
| <input type="checkbox"/> Coloured covers/
Couverture de couleur | <input type="checkbox"/> Coloured pages/
Pages de couleur |
| <input type="checkbox"/> Covers damaged/
Couverture endommagée | <input type="checkbox"/> Pages damaged/
Pages endommagées |
| <input type="checkbox"/> Covers restored and/or laminated/
Couverture restaurée et/ou pelliculée | <input type="checkbox"/> Pages restored and/or laminated/
Pages restaurées et/ou pelliculées |
| <input type="checkbox"/> Cover title missing/
Le titre de couverture manque | <input checked="" type="checkbox"/> Pages discoloured, stained or foxed/
Pages décolorées, tachetées ou piquées |
| <input type="checkbox"/> Coloured maps/
Cartes géographiques en couleur | <input type="checkbox"/> Pages detached/
Pages détachées |
| <input type="checkbox"/> Coloured ink (i.e. other than blue or black)/
Encre de couleur (i.e. autre que bleue ou noire) | <input checked="" type="checkbox"/> Showthrough/
Transparence |
| <input type="checkbox"/> Coloured plates and/or illustrations/
Planches et/ou illustrations en couleur | <input type="checkbox"/> Quality of print varies/
Qualité inégale de l'impression |
| <input type="checkbox"/> Bound with other material/
Relié avec d'autres documents | <input type="checkbox"/> Includes supplementary material/
Comprend du matériel supplémentaire |
| <input type="checkbox"/> Tight binding may cause shadows or distortion
along interior margin/
La reliure serrée peut causer de l'ombre ou de la
distorsion le long de la marge intérieure | <input type="checkbox"/> Only edition available/
Seule édition disponible |
| <input type="checkbox"/> Blank leaves added during restoration may
appear within the text. Whenever possible, these
have been omitted from filming/
Il se peut que certaines pages blanches ajoutées
lors d'une restauration apparaissent dans le texte,
mais, lorsque cela était possible, ces pages n'ont
pas été filmées. | <input type="checkbox"/> Pages wholly or partially obscured by errata
slips, tissues, etc., have been refilmed to
ensure the best possible image/
Les pages totalement ou partiellement
obscurcies par un feuillet d'errata, une pelure,
etc., ont été filmées à nouveau de façon à
obtenir la meilleure image possible. |
| <input type="checkbox"/> Additional comments./
Commentaires supplémentaires: | |

This item is filmed at the reduction ratio checked below/
Ce document est filmé au taux de réduction indiqué ci-dessous.

10X	14X	18X	22X	26X	30X
<input type="checkbox"/>	<input type="checkbox"/>	<input type="checkbox"/>	<input type="checkbox"/>	<input checked="" type="checkbox"/>	<input type="checkbox"/>
12X	16X	20X	24X	28X	32X

The copy filmed here has been reproduced thanks to the generosity of:

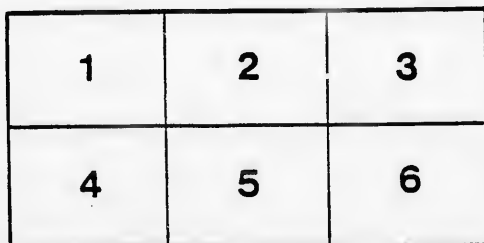
Archives of Ontario
Toronto

The images appearing here are the best quality possible considering the condition and legibility of the original copy and in keeping with the filming contract specifications.

Original copies in printed paper covers are filmed beginning with the front cover and ending on the last page with a printed or illustrated impression, or the back cover when appropriate. All other original copies are filmed beginning on the first page with a printed or illustrated impression, and ending on the last page with a printed or illustrated impression.

The last recorded frame on each microfiche shall contain the symbol \rightarrow (meaning "CONTINUED"), or the symbol ∇ (meaning "END"), whichever applies.

Maps, plates, charts, etc., may be filmed at different reduction ratios. Those too large to be entirely included in one exposure are filmed beginning in the upper left hand corner, left to right and top to bottom, as many frames as required. The following diagrams illustrate the method:



L'exemplaire filmé fut reproduit grâce à la générosité de:

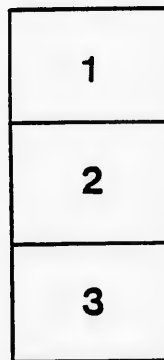
Archives of Ontario
Toronto

Les images suivantes ont été reproduites avec le plus grand soin, compte tenu de la condition et de la netteté de l'exemplaire filmé, et en conformité avec les conditions du contrat de filmage.

Les exemplaires originaux dont la couverture en papier est imprimée sont filmés en commençant par le premier plat et en terminant soit par la dernière page qui comporte une empreinte d'impression ou d'illustration, soit par le second plat, selon le cas. Tous les autres exemplaires originaux sont filmés en commençant par la première page qui comporte une empreinte d'impression ou d'illustration et en terminant par la dernière page qui comporte une telle empreinte.

Un des symboles suivants apparaîtra sur la dernière image de chaque microfiche, selon le cas: le symbole \rightarrow signifie "A SUIVRE", le symbole ∇ signifie "FIN".

Les cartes, planches, tableaux, etc., peuvent être filmés à des taux de réduction différents. Lorsque le document est trop grand pour être reproduit en un seul cliché, il est filmé à partir de l'angle supérieur gauche, de gauche à droite, et de haut en bas, en prenant le nombre d'images nécessaire. Les diagrammes suivants illustrent la méthode.



POLLING SUB-DIVISION No. 2.

No. on Roll	NAME.	CON.	No. OF LOT OR PART LOT.	OWNER OR TENANT.	No. on Roll	NAME.	CON.	No. OF LOT OR PART LOT.	OWN. OR TENAN.
183	Allen John	6	E part 34	O	231	McCoy William	8	W half 28	O
205	Armstrong John	7	W half 29	O	246	McBride Thomas	8	N W part 33	O
206	Armstrong Charles	7	W half 29	T	249	McBurney Hugh	8	E part 33	T
250	Agnew Thomas sr	8	N E part 33	O	252	Mooney William	8	N half 34	O
247	Agnew James	9	S half 35	O	257	McCallum John	8	38	O
295	Agnew John	9	W half 38	O	258	McCallum James	8	39	O
300	Anderson Finlay	9	W part 40	O	259	McLean Donald	8	40	O
301	Anderson James	9	C part 40	O	267	Morrison William	8	N E C 42	O
302	Anderson Duncan jr	9	E part 40	O	274	Muson Peter	9	S half 30 and 31	T
532	Agnew Thomas jr	10	N E part 36	O	282	McDonald William	9	N half N half 34	O
350	Armstrong Edward sr	10	W half 38	O	284	McCourt Thomas	9	S E quarter 34	O
331	Armstrong Edward jr	10	W half 38	T	285	McLaughlin Thomas	9	S E quarter 34	O
178	Black John	6	E half 31	O	312	Martin Archibald	10	N half 28	O
191	Black Andrew	6	W half 38	O	315	McGee John	10	W half 30	O
203	Brooks John	7	S part 28	O	316	McGee James	10	E half 30	O
204	Beadle Peter	7	S part 28	T	324	McCourt Henry	10	N half 34	T
216	Bennet John	7	W half 37	O	329	Menzies John	10	N half 37	O
113	Black Thomas	7	E half 38 and 39	T	173	Nixon William	6	N part 29	V
226	Budge John	7	S W quarter 41	O	194	Nethery William	6	S half 40	O
229	Brooks Thomas	7	C part 42	O	220	Nicol Walter	7	W half 38	O
237	Bruce Thomas	8	S half S half 30	O	225	Nethery John	7	N W quarter 41	O
239	Barber Robert	8	S half S half 31	T	292	Naylor George	9	S half 36	T
248	Bengough William	8	E part 33	O	294	Naylor Fountain	9	S half 37	T
253	Bone John	8	35	O	240	O'Neil Francis	8	N half S half 31	O
262	Brooks John	8	S half 42	O	263	Owens James	8	N half 42	O
264	Bell Cornelius	8	N E pt S half 42	T	305	Owens John	9	E half 41	O
277	Beecroft John	9	N half 31	O	171	Palmer William	6	W half 28	T
306	Brandon John	9	N half 42	O	186	Parrott Thomas G	6	part 31 and 36	O
307	Brandon Matthew	9	S half 42	O	233	Philips Ezekiel	8	N W part 28	O
322	Bessy Robert	10	S half 31	O	286	Porterfield Peter	9	S W quarter 34	O
341	Brandon James	10	N half 41	O	340	Pearen Matthew	10	N half 40	O
343	Brandon Thomas	10	S half 42	O	223	Rath William	7	S half N half 40	O
175	Carr Alfred	6	C part 30	T	235	Robinson Edward	8	N half 40	O
177	Carr William	6	S W quarter 31	O	243	Ruddy John	8	S part W half 32	O
222	Conliss John	7	S half 40	O	280	Robertson Michael	9	S E part 33	O
227	Corley Richard	7	E half 41	O	281	Robertson Robert	9	S E part 33	T
230	Campbell John	7	N half N half 42	O	288	Robertson Alexander	9	S half N half 35	O
247	Campbell Thomas	8	S W pt 33	O	290	Reilly Robert	9	N half 36	O
273	Chamney Richard	8	29	O	296	Robertson John	9	part 38 and 39	O
323	Copland William	10	S half 34	T	297	Robertson Duncan	9	S E quarter 38	O
326	Cummings George	10	36	O	308	Robertson Donald	9	S E part 42	O
328	Crooks Wetherald	10	N half S half 37	O	313	Rintoul Alexander	10	W half 29	O
176	Densmore Henry	6	part 30 and 31	O	332	Robertson Arch.	10	E half 38	O
196	Dunbar Joseph	6	E half 41	O	345	Ray Benjamin	10	N half 42	O
207	Deacon Timothy	7	E half 29	O	346	Ray Silvanus	10	N half 42	T
208	Deacon Henry jr	7	W half 30	O	185	Spafford Charles	6	N part W half 35	O
289	Dalgarno George	9	N half N half 35	O	184	Snell William	6	N half S E qr 36	O
311	Donohue John	10	S half 28	T	192	Scott William	6	E half 38 and 39	O
314	Dow James	10	E half 29	O	193	Scott Peter	6	N half 40	O
317	Deacon James	10	S half 31	O	210	Shorts William	7	W three qtr 31	O
187	Edwards Henry	6	N E quarter 36	O	211	Shorts Enoch	7	pt 31 & W half 32	O
283	Edmond James	9	S half N half 34	O	213	Solar George	7	S half 33	O
219	Fells Samuel	7	E half 37	O	216	Scott David	7	35	O
272	Farquharson Wm	9	S half 28	O	217	Scott Walter	7	36	O
335	Fowley James sr	10	N part S half 39	O	224	Stonehouse Richard	7	N half N half 40	O
336	Fowley James jr	10	S part S half 39	O	238	Smith James	8	S half S half 31	O
342	Ferguson James	10	S half 41	O	241	Singleton James	8	N half 31	O
260	Grigg James	8	W half 41	O	242	Singleton Abraham	8	N half 31	O
260	Grigg William	8	W half E half 41	O	244	Stein Robert	8	N W part 32	O
279	Garrett William B	9	W part 33	O	275	Singleton William sr	9	N half N half 30	O
327	Garrick James	10	S half S half 37	O	276	Singleton William jr	9	S half N half 30	O
181	Henry George	6	S half 33	O	293	Scott Robert	9	N half 37	O
251	Henry James	8	S half 34	O	298	Stewart James	9	S W quarter 39	O
269	Haines Edward	9	N half 28	O	174	Tindall George	6	S half S half 30	O
270	Haines Robert G	9	N half 28	O	179	Taylor Thomas H	6	32	O
321	Hanna Campbell	10	N half 32 and 33	O	256	Tynor George sr	8	37	O
344	Hopper John	10	S half 42	T	256	Tynor George A jr	8	E half 37	T
318	Irwin John	10	part 31	T	2	Tynor James	8	W half 37	T
319	Irwin Thomas	10	N pt N half 31	O	265	Thomson William	8	N E part 42	O
201	Jefferson John	7	S W part 28	O	195	Vancamp George	6	W half 41	O
236	James Thomas	8	N half S half 30	O	171	Wallace Thomas	6	W half 28	O
245	Jamieson Thomas	8	E half 32	O	197	Walsh Thomas sr	6	N half 42	O
299	Johnston David	9	E half 39	O	198	Walsh William	6	S half S half 42	O
325	Jackson John	10	N part 35	O	199	Walsh Thomas M jr	6	N half S half 42	O
333	Johns Frederick	10	N half N half 39	O	200	White George	7	N half N half 28	O
234	Kenny James	8	W half 29	O	214	Wightman James	7	S half N half 34	O
320	King Peter	10	S half 32 and 33	O	215	Wightman Henry	7	N 1/2 N 1/2 & S 1/2 34	O
261	Lobb William	8	E half E half 41	O	254	Wightman Thomas	8	36	O
278	Leishman Richard	9	32	O	255	Wightman John	8	36	O
172	McLaughlin Thomas	6	N W part 28	O	291	Walton Fenwick	9	S half 36	O
180	Morton Alexander	6	N W quarter 33	O	303	Walsh Samuel	9	W half 41	T
182	McBurney John jr	6	part 33 and 34	O	309	Wightman John W	9	S E part 42	T
531	McDowell William	6	S half 34	O	310	Webster John	10	S half 28	O
184	McDonald Peter	6	S pt W half 35	O	334	Watson James	10	S half N half 39	O
202	McPhedran Neil	7	S W C 28	O	337	Williamson Robt sr	10	N half S half 40	O
209	Marwood John	7	E half 30	O	338	Williamson James	10	N half S half 40	T
221	McCallum Finlay	7	E half 38 and 39	O	339	Williamson Robt jr	10	S half S half 40	O
228	McBurney Joseph	7	S half S half 42	O					

POLLING SUB-DIVISION No. 3.

No. on Roll	NAME.	CON.	No. of Lot or Part Lot.	OWNER OR TENANT.	No. on Roll	NAME.	CON.	No. of Lot or Part Lot.	OWNER OR TENANT.
359	Anderson John	11	N part 36	O	450	Linklater William	13	N half 39	O
377	Abraham Thomas	11	W half W hlf 41	O	453	Linklater Magnus	13	E half W hlf 41	O
378	Abraham William	11	E half W half 41	O	454	Linklater John	13	S E quarter 41	O
409	Auld Allen	12	N half 40	T	455	Linklater Andrew	13	N E quarter 41	O
431	Anderson Archibald	13	W half 40	O	490	Linklater Thomas	14	W half 41	T
440	Burk Thomas	13	W half 36	O	358	McBurney Samuel	11	E half 32	O
364	Coutts John sr	11	S half 34	T	379	McGirr George	11	W half E hlf 41	T
365	Coutts John jr	11	S half 34	T	380	McGirr John	11	part 41 and 42	O
370	Coutts George	11	N half 37	T	283	Martin Donald	12	S 1/4 S 1/4 28 & 29	O
375	Coutts Robert	11	S half 39	O	384	Martin William	12	N 1/4 S 1/4 28 & 29	O
381	Coutts George	11	S E quarter 42	O	385	Martin James	12	N half 28	O
418	Glow John	12	S half 30	O	386	Martin Charles	12	N half 29	T
393	Coad Richard	12	N half 33	O	387	McKay William	12	N half 30	T
394	Coad Thomas	12	S half 33	O	388	McKay Donald	12	N half N half 31	T
395	Coad John	12	34	O	419	McGrogan Felix	12	S half 31	O
412	Cummings Hugh	12	W half 41	O	405	McGregor John	12	E half N hlf 38	T
413	Cummings James	12	W half 41	O	408	McDougall Alex	12	S half 39	O
423	Cook Robert H	13	W half 29	O	420	McKay George	13	S half S half 28	O
424	Cook Thomas	13	W half 29	O	425	McFarlane Thomas	13	E half 29	O
426	Crow James sr	13	S half 39	O	468	Mowbray John	14	N half 31	O
427	Crow David	13	S half 30	T	485	Mathieson Thomas	14	N E part 37	O
428	Crow James jr	13	N half 30	O	353	Norman John	11	N half N half 31	O
441	Clifford Martin	13	E half 36	O	354	Norman William	11	N half N half 31	O
442	Currie James M	13	W half 37	O	369	Naylor Ambrose	11	35	T
460	Carrick Nathaniel	14	N W part 28	O	372	Naylor James	11	S E part 37	O
461	Carrick Thomas	14	N W part 28	O	357	Orr John	11	W half 32	O
487	Cameron John	14	33	O	355	Pugsley John	11	S half N half 31	O
489	Currie Robert	14	pt 39 & N hlf 40	O	374	Perdue James	11	E 1/4 38 & N 1/4 39	O
497	Cassels Mark	14	S part 42	O	438	Pattison James	13	E half 35	O
359	Deacon Henry sr	11	S half 33	O	439	Pattison Wesley	13	E half 35	T
360	Deacon John	11	S half 33	T	449	Patterson James	13	S half 39	O
363	Deacon William	11	S half 34	O	465	Patterson Thomas	14	N half 30	O
414	Drost John	12	E half 41	O	478	Pelton John	14	N part 35	O
456	Duckett Lloyd	13	N part 42	O	362	Roach William	11	N half 34	O
476	Davidson Thomas	14	S half 34	O	396	Reid James	12	W half 35	O
496	Deacon William	14	S half S half 40	O	400	Robertson George	12	S half 37	O
452	Kliott William	13	W hlf E half 40	O	406	Reid William sr	12	S half 38	O
469	Everett John	14	S half 31	O	407	Reid William jr	12	S half 38	T
494	Elliott John	14	N W part 42	O	433	Reid Adam	13	S half 33	O
391	Finnan Thomas	12	N W part 32	O	436	Robertson David	13	S half 34	O
392	Finnan Peter	12	N W part 32	T	470	Ray William	14	W half W hlf 32	O
411	Ferguson Thomas	12	S half 40	O	389	Steen William sr	12	S half N half 31	O
448	Fitzpatrick William	13	S half 38	O	390	Steen William jr	12	S half N half 31	T
473	Fralick Samuel B	14	N half 33	O	397	Sheill Andrew	12	E half 35	O
474	Fralick Allen	14	S half 33	O	401	Sheill James	12	N W quarter 37	O
483	Foster John	14	S W part 37	O	415	Salter John	12	N half 42	O
748	Gibbons William	11	S half 28	O	429	Sutherland William	13	S half 31	O
749	Gibbons Thomas	11	29	O	430	Sutherland James	13	N half 31	O
350	Gibson John	11	S half 30	O	434	Sheill John	13	N half 33	O
404	Green George	12	E half N half 38	O	435	Stewart Angus	13	N half 34	T
462	Gillespie John	14	part 28 and 29	O	457	Smith William	13	S part 42	O
477	Grain Henry	14	N half 34	O	458	Smith John	13	S part 42	T
421	Hamilton James	13	N half S half 28	O	459	Sanderson William	14	S half 28	O
422	Henderson H D	13	N half 28	O	464	Sneltzer Abel	14	S part 29	O
432	Harrison Thomas	13	E part 32	O	471	Sharp William	14	E three qtrs 32	O
466	Holmes Joseph	14	S half 30	O	472	Sharp William John	14	E three qtrs 32	O
484	Holmes John	14	N E quarter 37	T	482	Snook Martin	14	N W part 37	O
361	James Nathaniel	11	N half 33	O	495	Sheill Robert	14	N half S half 40	O
366	Jackson Abraham	11	35	O	347	Troy Patrick	11	N half 28	O
371	James Edward	11	S half 37	O	481	Taylor John	14	E half 36	O
382	James Richard	11	N E quarter 42	O	488	Tervit George	14	part 39	O
475	King Chamncey	14	S half 33	T	492	Townsend John	14	E half 41	T
351	Leaver Peter	11	N half 30	O	403	Vanstone John	12	part 37 and 38	O
352	Leaver Thomas	11	N half 30	O	356	Worden Edward	11	S part 31	O
373	Lind Thomas	11	W half 38	O	402	Walters Thomas	12	part 37 and 38	T
376	Louttit Magnus	11	40	O	437	Walker Michael	13	W half 35	O
399	Lemieux Elisha	12	S half 36	O	446	Walters Richard sr	13	N half 38	O
416	Lowery James	12	S half 42	O	447	Walters Richard jr	13	N half 33	O
417	Lowery Robert	12	S half 42	O	467	Wellwood Joseph	14	S half 30	T
431	Lockeridge Joseph	13	S W part 32	O	479	Wilson James	14	W half 36	O
443	Leggat Gilbert	13	W hlf E half 37	T	480	Wilson Gavie	14	S part 35	T
444	Leggat Samuel jr	13	E half E half 37	T	486	Webb Samuel	14	38	O
445	Leggat Samuel sr	13	E half 37	O	398	Young Alexander	12	N half 36	O

I, P. PORTERFIELD, Clerk of the Municipality of East Wawanosh, in the County of Huron, do hereby certify that the within list is a correct list for the year 1876 of all persons appearing by the last revised Assessment Roll of the said Municipality to be entitled to vote at Elections for members of the Legislative Assembly; and that a copy of such list was first posted up in my office at Marnoch P. O., Lot 34, Con. 9, on Thursday, the 3rd day of August. And I hereby call upon all electors to examine the said list, and if any omissions or other errors are perceived therein, to take immediate proceedings to have the said errors corrected according to law.

P. PORTERFIELD,
CLERK OF EAST WAWANOSH.

DEPOSED THIS 3RD DAY OF AUGUST, 1876.

