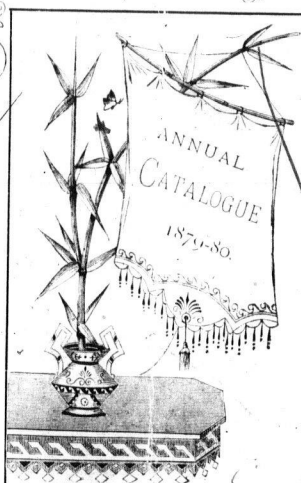


R3768
W 516 Copyl
1879/80

Can

WESLEYAN

Female College



HAMILTON, ONTARIO.

Incorporated 1861.

HAMILTON PUBLIC LIBRARY

REFERENCE COLLECTION

R376.8

Copy 1

Cana

W516

1879/80

HAMILTON COLLECTION

FOR USE IN LIBRARY ONLY

NINETEENTH
ANNUAL CATALOGUE

OF THE

Wesleyan Female College,

HAMILTON, ONTARIO.

—FOR—

THE COLLEGIATE YEAR 1879--1880.

Incorporated by Act of Parliament.

HAMILTON:

PRINTED BY THE TIMES PRINTING COMPANY.

HAMILTON ¹⁸⁸⁰ PUBLIC LIBRARY



CIRCULAR.

HAMILTON, as a residence is unsurpassed for healthfulness and beauty of location.

The building will accommodate 250 Boarders.

The rooms for Boarders are lofty, and have glass ventilators, connecting them with unusually lofty and spacious halls.

Each Sitting-Room is carpeted, and furnished with everything necessary to convenience and comfort.

The Institution Drawing-Room (25 by 60 ft.) is well furnished, and looks out upon a beautiful fountain.

The Dining-Hall (36 by 70 ft.) is airy, light, and finished in fresco, with panelled walls and emblematic designs beautifully executed.

There are cold, hot and shower baths, accessible at all proper times.

A spacious play-ground, enclosed, with covered walks, will afford ample room for out-door exercise in all varieties of weather, and prove an inducement to healthful physical action.

In winter our grounds furnish an admirable Skating Rink.

There are three large School Rooms (30 by 60 ft.) furnished with chairs and tables suited to the comfort of the Student.

The Recitation-Rooms are large and airy. In no case will classes be crowded together, and obliged to breathe fetid and unwholesome air.

1979/40, Cop. 1
JAN 28 1958



HAMILTON PUBLIC LIBRARY

BOARD OF DIRECTORS.

| | |
|--|--|
| JOSEPH LISTER, Esq. | WM. ANGLIN, Esq., <i>Kingston.</i> |
| J. W. ROSEBRUGH, Esq., M. D. | D. MOORE, Esq. |
| Rev. E. WOOD, D.D., <i>Toronto.</i> | GEORGE ROACH, Esq. |
| S. F. LAZIER, Esq., LL. B. | W. E. SANFORD, Esq. |
| Rev. S. ROSE, D.D., <i>Toronto.</i> | WM. A. ROBINSON, Esq. |
| JOHN BREDEN, Esq., <i>Kingston.</i> | Rev. G. R. SANDERSON, D. D., <i>London.</i> |
| Rev. J. A. WILLIAMS, D. D., <i>Goderich.</i> | EDWARD GURNEY, Esq., |
| C. McQUESTEN, Esq., M. D. | Rev. NATH. BURWASH, D. D., <i>Cobourg.</i> |
| Rev. S. S. NELLES, D.D., LL.D. | |
| Rev. N. R. WILLOUGHBY, M. A., <i>Belleville.</i> | |

Officers of the Board.

| | |
|-------------------------------|---------------------------|
| C. McQUESTEN, M. D. | PRESIDENT. |
| DENNIS MOORE, Esq., | VICE-PRESIDENT AND TREAS. |
| Rev. A. BURNS, D. D., LL. D., | SECRETARY. |

Governor.

REV. A. BURNS, D. D., LL. D.

FAULTY OF INSTRUCTION.

REV. A. BURNS, D. D., LL. D.,

*Principal and Professor of Logic, Mental and Moral Sciences
and Evidences.*

REV. W. P. WRIGHT, M. A., B. D.,

Professor of Natural Sciences and Latin.

MISS L. O'LOANE, M. E. L.,

Mathematics and Rhetoric.

MISS M. PATERSON, M. E. L.,

History and Analysis.

MRS. M. A. WRIGHT,

English Branches.

MISS IDA FISH,

Preparatory English.

FAULTY OF INSTRUCTION.

Modern Languages.

MADemoisELLE COHENDOZ.

French and German.

Fine Arts.

HENRY MARTIN, O. S. A.

Prof. of Drawing and Painting.

Music.

R. S. AMBROSE, ESQ.,

Prof. of Music.

MISS ANNETTE REESOR.

MISS ELLIE AMBROSE.

Vocal Music.

MISS M. IDA HACKETT.

Calisthenics and Riding.

MAJOR DEARNALY.

GRADUATES.

CLASS OF 1863.

Martha P. Grover, - - - M.L.A., - Hamilton.

CLASS OF 1864.

Mary F. Cromwell, - - - M.L.A., - Hamilton.
 Hester A. Fifield, - - - " - Orange, Vermont.
 Eliza Starr Rice, - - - " - Hamilton.
 Clara W. Farr, - - - M.E.L., - Hamilton.
 Ellen Hardie, - - - " - Bobcaygeon.
 Addie Knowles, - - - " - Cookstown.
 Elizabeth F. McGillivray, - - - " - Whitby.
 Frankie M. Palmer, - - - " - Thurlow.
 Elizabeth A. Sharp, - - - " - Cavanville.

CLASS OF 1865.

*Mary Allison, - - - M.L.A., - Sackville, N.B.
 Elizabeth A. Sharp, - - - " - Cavanville.
 Margaret Proctor, - - - " - Sarnia.
 Isabel M. Bray, - - - M.E.L., - Oakville.
 Arletta D. Massey, - - - " - Newcastle.

CLASS OF 1866.

Hattie A. Cook, - - - M.E.L., - Chicago, Ill.
 Jennie F. Greener, - - - " - Waterdown.
 Lucy McCullough, - - - " - Bradford.
 Emily Myles, - - - " - Hamilton.
 *Annie L. Stedman, - - - " - Dixon, Ill.
 Mollie F. Wood, - - - " - Dixon, Ill.
 Emma Watkins, - - - " - Hamilton.
 Charlotte Watkins, - - - " - Hamilton.

CLASS OF 1867.

*Maggie A. Jackes, - - - M.E.L., - Eglington.
 Jennie E. Huffman, - - - " - Bath.
 Adelia V. Patterson, - - - " - Belleville.
 Lizzie O'Loane, - - - " - Glanford.

*DECEASED.

CLASS OF 1868.

| | | |
|---------------------|---------|--------------|
| Emma J. Douse, | M.L.A., | Paris. |
| Maria O. Allen, | M.E.L., | Hamilton. |
| Jane Breden, | " | Kingston. |
| Julia A. Caldwell, | " | Montreal. |
| Helen Ford, | " | Kingston. |
| Rachel R. Freshman, | " | Lindsay. |
| Mary J. Keagey, | " | Dundas. |
| Alice M. M. Lister, | " | Hamilton. |
| M. Eliza Lapum, | " | Centreville. |
| Mary E. Moore, | " | Hamilton. |
| Ellen McHenry, | " | Napanee. |
| Mary J. Peat, | " | Hamilton. |
| Marietta Stinson, | " | Hamilton. |
| Emma F. Vail, | " | Hamilton. |
| Mary J. Walker, | " | Whitby. |

CLASS OF 1869.

| | | |
|--------------------|---------|----------------|
| Mary E. Moore, | M.L.A., | Hamilton. |
| Emma F. Vail, | " | Hamilton. |
| Mary E. White, | " | Hamilton. |
| Jennie P. Allison, | M.E.L., | Pictou. |
| H. M. Lincoln, | " | Waltham, Mass. |
| Mary J. Nisbet, | " | Hamilton. |
| Nellie E. Sawyer, | " | Hamilton. |
| Mary A. Winn, | " | Newmarket. |
| Mary E. White, | " | Bronte. |

CLASS OF 1870.

| | | |
|--------------------|---------|--------------|
| Maggie E. Amos, | M.E.L., | Hamilton. |
| Maria Bowman, | " | Blair. |
| Mary Y. Duff, | " | Hamilton. |
| Maria A. Hurlburt, | " | Point Abino. |
| Sarah Mulholland, | " | Yorkville. |

CLASS OF 1871.

| | | |
|----------------------|---------|----------------|
| Fannie R. Lincoln, | M.L.A., | Waltham, Mass. |
| Mary A. Bean, | M.E.L., | Oshawa. |
| Anna I. Duncan, | " | Bayfield. |
| Annie Lister, | " | Hamilton. |
| Alice E. Lukes, | " | Newmarket. |
| Catharine C. Morton, | " | Matilda. |

| | | | | |
|--------------------|-------|---------|---|--------------|
| Matilda Meharry, | - - - | M.E.L., | - | Springville. |
| Eliza R. McMullen, | - - - | " | - | Picton. |
| Mary E. Tyrrell, | - - - | " | - | Weston. |

CLASS OF 1872.

| | | | | |
|--------------------|-------|---------|---|-------------------|
| Lillie Lister, | - - - | M.L.A., | - | Hamilton. |
| Emma F. Aikins, | - - - | " | - | Toronto. |
| Alice R. Hurlburt, | - - - | M.E.L., | - | Manitoulin Isl'd. |
| Eliza Lucas, | - - - | " | - | Champlain, N. Y. |
| Elvira M. Manning, | - - - | " | - | Bradford. |
| Ida M. Sawyer, | - - - | " | - | Muscatine, Iowa. |

CLASS OF 1873.

| | | | | |
|---------------------|-------|---------|---|----------------|
| Sarah A. Baker, | - - - | M.E.L., | - | Amherst, N. S. |
| Miriam A. Clark, | - - - | " | - | Conway. |
| Sarah E. Hagar, | - - - | " | - | Welland. |
| Lizzie M. Haskell, | - - - | " | - | Waterloo, Que. |
| Annie Leary, | - - - | " | - | Britannia. |
| Mary D. McIlwraith, | - - - | " | - | Hamilton. |
| Mary J. Paterson, | - - - | " | - | Dunsford. |
| Agnes Randall, | - - - | " | - | Newmarket. |
| Maggie E. Stanley, | - - - | " | - | London. |
| Georgie J. Stinson, | - - - | " | - | Hamilton. |
| Isabella Walton, | - - - | " | - | Pakenham. |
| Ophelia E. Webster, | - - - | " | - | Bracebridge. |

CLASS OF 1874.

| | | | | |
|---------------------|-------|---------|---|-----------------|
| Florence H. Brown, | - - - | M.E.L., | - | Hamilton. |
| Alice M. Constable, | - - - | " | - | Spencerville. |
| M. E. France, | - - - | " | - | Brooklyn, N. Y. |
| Agnes Porteous, | - - - | " | - | Paisley. |
| Marian M. Rogers, | - - - | " | - | Wallaceburg. |

CLASS OF 1875.

| | | | | |
|----------------------|-------|---------|---|-----------------|
| Katie E. Kerr, | - - - | M.L.A., | - | Perth. |
| Susie F. Wilson, | - - - | " | - | Hamilton. |
| Sarah Davey, | - - - | M.E.L., | - | Liskeard. |
| Clara L. France, | - - - | " | - | Hamilton. |
| Clara J. Haskell, | - - - | " | - | Waterloo, Que. |
| Henrietta Lake, | - - - | " | - | Picton. |
| Janette A. Mitchell, | - - - | " | - | Drummondville. |
| Mary J. McCarthy, | - - - | " | - | St. Catharines. |
| Martha M. Robertson, | - - - | " | - | Harriston. |
| Nettie Upper, | - - - | " | - | St. Anns. |

CLASS OF 1876.

| | | | | |
|-----------------------|---------|---------|---|-------------------|
| Frances Bryson, | - - - - | M.L.A., | - | Montreal. |
| Leetta L. Gilbert, | - - - - | " | - | Philadelphia, Pa. |
| Jennie N. McIlwraith, | - - - - | " | - | Hamilton. |
| Bessie R. Starr, | - - - - | " | - | Yarmouth, N. S. |
| Maggie D. Webster, | - - - - | " | - | Quebec. |
| Gertrude H. A. Buck, | - - - - | M.E.L., | - | Palermo. |
| Gertrude E. Coady, | - - - - | " | - | Toronto. |
| Laura A. McEvers, | - - - - | " | - | Cobourg. |
| Louisa M. Robertson, | - - - - | " | - | Harriston. |
| Ina Sutherland, | - - - - | " | - | Fingal. |
| Sophia J. White, | - - - - | " | - | Hamilton. |
| Ida Wilkins, | - - - - | " | - | Quebec. |

CLASS OF 1877.

| | | | | |
|-------------------------|---------|---------|---|------------------|
| Georgina Beynon, | - - - - | M.L.A., | - | Yorkville. |
| Nellie Flack, | - - - - | " | - | Banda. |
| Evelina O. Werden, | - - - - | " | - | Gilbert's Mills. |
| Rose Adam, | - - - - | M.E.L., | - | Lindsay. |
| Laura Brush, | - - - - | " | - | Austin, Texas. |
| Mary E. W. Bowes, | - - - - | " | - | Hamilton. |
| Jessie Benton Crawford, | - - - - | " | - | Franklin, Pa. |
| Mary Janette Collier, | - - - - | " | - | St. Catharines. |
| May R. Dickson, | - - - - | " | - | Sarnia. |
| Lucy H. Hurlburt, | - - - - | " | - | Manitowaning. |
| Lizzie C. McCalmont, | - - - - | " | - | Franklin, Pa. |
| Anna O'Loane, | - - - - | " | - | Renton Station. |
| Mary Randall, | - - - - | " | - | Newmarket. |
| Lucinda A. J. Wigle, | - - - - | " | - | Ruthven. |
| Louie M. Wright, | - - - - | " | - | Hamilton. |

CLASS OF 1878.

| | | | | |
|---------------------|---------|---------|---|--------------|
| Alice Evans, | - - - - | M.L.A., | - | Hamilton. |
| Ida A. Rosebrugh, | - - - - | " | - | Hamilton. |
| Jennie M. Beynon, | - - - - | M.E.L., | - | Weston. |
| Mary Currie, | - - - - | " | - | Dresden. |
| Serena Healy, | - - - - | " | - | Drayton. |
| Ella A. Howell, | - - - - | " | - | Jerseyville. |
| Gussie L. Harrison, | - - - - | " | - | Milton. |
| Sophie M. Hillyard, | - - - - | " | - | St. Marys. |
| Annie L. Pears, | - - - - | " | - | Toronto. |
| Maggie C. Rutledge, | - - - - | " | - | Bayfield. |
| Emma L. Rice, | - - - - | " | - | Hamilton. |

CLASS OF 1879.

| | | | | |
|-----------------------|-------|---------|---|----------------|
| Josephine Bongard, | - - - | M.E.L., | - | Prince Albert. |
| Nettie T. Coatsworth, | - - - | " | - | Toronto. |
| Jennie L. Davis, | - - - | " | - | Hamilton. |
| Minnie J. D. Erb, | - - - | " | - | Preston. |
| Mary E. Pears, | - - - | " | - | Toronto. |
| Phoebe A. Smith, | - - - | " | - | Glanford. |

CLASS OF 1880.

| | | | | |
|--------------------|-------|---------|---|----------------|
| Louisa G. Bryson, | - - - | M.L.A., | - | Montreal, Que. |
| Clara E. Blaicher, | - - - | " | - | Hamilton. |
| Emma Bradley, | - - - | M.E.L., | - | Hamilton. |
| Minnie J. B. Buck, | - - - | " | - | Palermo. |
| Lucy G. Lister, | - - - | " | - | Hamilton. |
| Mary E. Pearson, | - - - | " | - | Merrickville. |
| Georgiana Sutton, | - - - | " | - | Carlisle. |
| Martha Stonehouse, | - - - | " | - | Armadales. |
| Clara M. Wilson, | - - - | " | - | Pieton. |

Total Number, 148.



LIST OF STUDENTS' NAMES.

| | | |
|----------------------|-------------|-------|
| Adams, Edith | Hamilton, | Ont. |
| Abraham, Minnie | Hamilton, | " |
| Abraham, Ella | Hamilton, | " |
| Burwell, Sarah | Lawrence, | " |
| Bradley, Helena | Listowel, | " |
| Bradley, Emma | Hamilton, | " |
| Beach, Altie | Bay City, | Mich. |
| Breithaupt, Caroline | Berlin, | Ont. |
| Bryson, Louisa G. | Montreal, | Que. |
| Bryson, Grace A. | Montreal, | " |
| Beatty, Frances M. | Sarnia, | Ont. |
| Buck, Gertie H. A. | Palermo, | " |
| Buck, Minnie J. B. | Palermo, | " |
| Buck, Ada J. | Burlington, | " |
| Brethour, Lottie E. | Brantford, | " |
| Bissell, Georgina | Mt. Forest, | " |
| Baker, Elizabeth | Millbrook, | " |
| Bray, Belle M. | Oakville, | " |
| Brownlee, Marion | Kincardine, | " |
| Blaicher, Clara E. | Hamilton, | " |
| Burns, Leda | Hamilton, | " |
| Burns, Marion | Hamilton, | " |
| Barnard, Katie | Hamilton, | " |
| Birely, Lillie | Hamilton, | " |
| Brown, Annie | Hamilton, | " |
| Buchan, Winnie | Hamilton, | " |
| Brush, Leilah | Hamilton, | " |
| Clerk, Brenda G. | Montreal, | Que. |
| Clerk, Thora D. | Montreal, | " |
| Cochran, Susie | Toronto, | Ont. |
| Cornish, Louisa | Burlington, | " |
| Crawford, Gertrude | Hamilton, | " |
| Dalley, Bertha L. | Hamilton, | " |
| Davis, Annie | Hamilton, | " |
| Davidson, Mary | Nelson, | " |

| | | |
|---------------------------------|-----------------------------|-------|
| Elliott, Essie | Brockville, | Ont. |
| Edson, Mamie | Montreal, | Que. |
| Evans, Alice | Hamilton, | Ont. |
| Eastwood, Ettie | Hamilton, | " |
| Freshman, Tilly | London, | " |
| Fowler, Mary L. | Listowel, | " |
| Fox, Fannie | Hamilton, | " |
| Fitzpatrick, Ersula | Hamilton, | " |
| Fish, Susie | Owen Sound, | " |
| Fish, Ida | Owen Sound, | " |
| Griffin, Maggie | St. Catharines, | " |
| Gibson, Amma | Bay City, | Mich. |
| Grafton, Edith | Dundas, | Ont. |
| Goettel, Carrie | Oil City, | Pa. |
| Gallagher, Laura | Guelph, | Ont. |
| Greene, Edith | Hamilton, | " |
| Galbreath, Clara | Hamilton, | " |
| Hill, Alice | Morpeth, | " |
| Hill, Clara | Morpeth, | " |
| Harvey, Ada N. | Aylmer, | " |
| Helmka, Annie | Brownsville, | " |
| Harris, Lois A. | Ingersoll, | " |
| Hampton, Aggie | Mt. Forest, | " |
| Henderson, Lillie | Sarnia, | " |
| Hugill, Florence | Brockville, | " |
| Hoodless, Clarkie | Hamilton, | " |
| Hadwen, Edith | Teeswater, | " |
| Inch, Louisa | Toronto, | " |
| Jarvis, Minnie B. | Simcoe, | " |
| Knowlys, Clara A. I. H. | London, | " |
| Kennedy, Ada V. | Smithville, | " |
| Keays, Ada M. | Vancouver's Isl., | B. C. |
| Keays, Nina | Hamilton, | Ont. |
| Kent, Kate | Hamilton, | " |
| Low, Henrietta S. | Warton, | " |
| Lee, Ella | Harrisburg, | " |
| Lewis, Ella | Hagersville, | " |
| Lelean, Leilah | Port Hope, | " |
| Lumsden, Kate | Hamilton, | " |

| | | | |
|-------|----------------------|---------------|-------|
| Ont. | Lumsden, Victoria | Hamilton, | Ont. |
| Que. | Livingston, Alice | Hamilton, | " |
| Ont. | Lister, Lily | Hamilton, | " |
| " | Lister, Lucy | Hamilton, | " |
| " | Lister, Frances | Hamilton, | " |
| " | Lister, Emily | Hamilton, | " |
| " | Lister, May | Hamilton, | " |
| " | Lister, Louisa | Hamilton, | " |
| " | Morris, Carrie G. | Olean, | N. Y. |
| " | Mulvey, Barbara | Winnipeg, | Man. |
| " | Moore, Carrie | Hamilton, | Ont. |
| Mich. | Moore, Mary | Hamilton, | " |
| Ont. | Miller, Lizzie | Hamilton, | " |
| Pa. | Muir, Cassie | Hamilton, | " |
| Ont. | Morton, Cassie | Caledonia, | " |
| " | McAlpine, Ida L. | Welland, | " |
| " | McDonald, Jennie A. | Brampton, | " |
| " | Mackay, Eugenie | Hamilton, | " |
| " | McMillan, Janet | Hamilton, | " |
| " | McQuesten, Lucia | Hamilton, | " |
| " | McMahon, Maudie | Hamilton, | " |
| " | McMahon, Katie | Hamilton, | " |
| " | Pearson, Mary E. | Merriekville, | " |
| " | Potter, Minnie | Windsor, | " |
| " | Robertson, Mary | Kincardine, | " |
| " | Rouse, Freddie | Bay City, | Mich. |
| " | Richmond, Frank | Woodstock, | Ont. |
| " | Russ, Josephine | Paris, | " |
| " | Riesberry, Martha A. | Harriston, | " |
| " | Reid Minnie | Hamilton, | " |
| " | Ryckman, Ella | Waterdown, | " |
| " | Rosebrugh, Ida | Hamilton, | " |
| B. C. | Smith, Hattie | Goderich, | " |
| Ont. | Smith, Belle G. | Sparta, | " |
| " | Smith, Phoebe | Glanford, | " |
| " | Smith, Minnie | Hamilton, | " |
| " | Springer, Emma | Hamilton, | " |
| " | Sadler, Nora | Hamilton, | " |
| " | Scott, Minnie | Hamilton, | " |
| " | Scott, Alice | Hamilton, | " |

| | | |
|----------------------------|---------------------|-------|
| Sawyer, Mary | Hamilton, | Ont. |
| Smiley, Rebecca | Hamilton, | " |
| Sutton, Georgiana | Carlisle, | " |
| Smalley, Zaidee | Bay City, | Mich. |
| Sifton, Kate L. . . . | Masonville, | Ont. |
| Sloan, Maggie | Hamilton, | " |
| Stonehouse, Martha | Armadale, | " |
| Treleaven, Mary A. . . . | Lucknow, | " |
| Thompson, Lizzie A. . . . | Treadwell, | " |
| Thornton, Jessie | Hamilton, | " |
| VanAllen, Mattie | Hamilton, | " |
| Wharin, Fannie G. . . . | Toronto, | " |
| Willmott, Marion E. . . . | Milton, | " |
| Wilson, Clara M. . . . | Pictou, | " |
| Williams, Abbie | Culloden, | " |
| Walker, Stella M. . . . | Odessa, | " |
| White, Emily | Hamilton, | " |
| White, Maggie | Hamilton, | " |

Total Number, 132.



COURSE OF STUDY.

N.B.—Students can pursue an elective course, embracing any study in either the Academic or Collegiate course, and receive a corresponding certificate.

The student is graded at first on her own statement of progress without a detailed examination; any changes necessary are made in the course of the first month.

Those who intend to take a full course, will find it indicated below.

Preparatory Department.

FIRST CLASS.

| | | |
|---------------------------|---------|------------------------|
| English Dictionary, | - - - - | Nuttall. |
| Reading, 4th book, | - - - - | Canadian Series. |
| Orthography, | - - - - | Authorized. |
| Composition, | - - - - | Easy Lessons. |
| Penmanship, Nos. 1, 2, 3, | - - - - | Payson & Dunton. |
| Geography, | - - - - | Hodgins' Easy Lessons. |
| Arithmetic, | - - - - | Small Authorized. |
| Grammar, | - - - - | Towers' Elements. |
| English History, | - - - - | Arthur's England. |

SECOND CLASS.

| | | |
|---------------------------|---------|------------------|
| Reading, 5th book, | - - - - | Canadian Series. |
| Geography, | - - - - | Campbell. |
| Arithmetic, | - - - - | Authorized. |
| Grammar, | - - - - | Authorized. |
| Composition, | - - - - | |
| Canadian History, | - - - - | Withrow. |
| Physiology, | - - - - | Cutter's Small. |
| Orthography, | - - - - | Authorized. |
| Penmanship, Nos. 6 and 9, | - - - - | Payson & Dunton. |

Academic Department.

| | | |
|----------------------------------|-----------|----------------------|
| Reading, | - - - - - | Wilson's Rhetorical. |
| " | - - - - - | Carpenter. |
| Geography (completed), | - - - - - | Campbell. |
| Arithmetic, | - - - - - | Authorized. |
| Orthography, | - - - - - | Authorized. |
| English History, | - - - - - | Collier. |
| Composition, | - - - - - | |
| Penmanship (Nos. 13, 14 and 15), | - - - - - | Payson & Dunton. |
| Natural History, | - - - - - | Davidson's. |
| Algebra (commenced), | - - - - - | Colenso. |
| Book-keeping, | - - - - - | Beatty. |
| Natural Philosophy (commenced), | - - - - - | Peck's Ganot. |

Collegiate Department.

FIRST YEAR.

| | | |
|---------------------------------|-----------|---------------------|
| Introductory Latin Book, | - - - - - | Harkness. |
| Latin Grammar, | - - - - - | Harkness. |
| French, | - - - - - | De Jardin's Course. |
| " Conversation, | - - - - - | French Phrase Book. |
| " "Causeries," | - - - - - | Sauveur. |
| " Dictionary, | - - - - - | Surenne's Standard. |
| Algebra (completed), | - - - - - | Colenso. |
| Natural Philosophy (completed), | - - - - - | Peck's Ganot. |
| Physical Geography, | - - - - - | Warren. |
| Grammatical Analysis, | - - - - - | Paradise Lost. |
| Universal History, | - - - - - | Swinton. |
| English Literature, | - - - - - | Collier. |
| Classical Reading, | - - - - - | Bell. |
| Geometry, | - - - - - | Pott's Euclid. |

SECOND YEAR.

| | | |
|-----------------------------|-----------|------------------------|
| Latin Reader, | - - - - - | Harkness. |
| Latin, Cæsar, Book I, | - - - - - | Anthon. |
| French, | - - - - - | De Jardin (completed). |
| Corinne, | - - - - - | De Stael. |
| French Dictation Exercises, | - - - - - | |
| Geometry, | - - - - - | Pott's Euclid. |
| Rhetoric and Composition, | - - - - - | Bain. |
| Logic, | - - - - - | Jevon's. |

| | |
|--------------------------------------|------------------|
| Natural Theology, | Paley. |
| Botany, | Wood's Botanist. |
| English Classical Reading, | English Authors. |
| Physiology, | Huxley. |
| Old Testament History, | Smith. |

THIRD YEAR.

| | |
|--|---------------------|
| Latin, Virgil, Books I. and II., | Anthon. |
| French Grammar, | Larousse, 1st Part. |
| " Tragedies, | Racine. |
| " Composition and Conversation, | |
| " Dictation Exercises, | |
| Trigonometry, | Davies' Legendre. |
| Astronomy, | Lectures. |
| Chemistry, | Steele. |
| Evidences of Christianity, | Paley and Lectures. |
| New Testament History, | Smith. |

FOURTH YEAR.

| | |
|---|----------------------------|
| Latin, Horace, Odes—Books I. and II., | Anthon. |
| French Grammar, | Larousse, 2nd Part. |
| " Literature, | Magill's Prose and Poetry. |
| " Composition and Conversation, | |
| Geology, | Steele. |
| Mental Philosophy, | Porter. |
| Moral Science, | Gregory. |
| Higher English Literature, | Taine and Lectures. |
| English Classical Reading, | Selections. |
| " Composition, | |

The English Course, omitting the Latin and French Languages, will embrace three years.

Spanish, German and Italian Languages will be systematically studied when classes desire it.

GERMAN COURSE.—1st Year—Alm's German Grammar, Heness' Der Leitfaden. 2nd Year—Adler's Progressive Reader. 3rd Year—Adler's Handbook of German Literature. 4th Year—Schiller (Marie Stuart), Goethe (Iphigenie), History of German Literature.

ITALIAN.—Elementary Course, Fontana's Italian Grammar, Graglia's Italian Dictionary, Silvio Pellico, Italian Conversation. For full course, application may be made to teacher.

These Courses will correspond to the Collegiate, and either of these languages will be considered as equivalent for the Latin.

Remarks on Course of Study.

PENMANSHIP.

Daily exercises in Penmanship are required, until good execution is attained.

READING AND SPELLING.

Particular attention is given to perfecting students in these branches.

COMPOSITION.

Composition is made a specialty, and will be required throughout the entire course, in forms varying with the advancement of the student. At the proper stage it will be connected with the principles and practice of literary criticism.

MUSIC.

Prominence is given to *Vocal Music*, in which the students receive very careful instruction.

It is designed to afford the best facilities in the departments both of Vocal and Instrumental Music. The selection of music will be under constant supervision, and only that will be allowed which is conducive to the cultivation of the most pure and elevated taste, as well as the most rapid progress of the pupil in the acquisition of this delightful accomplishment. Students may bring the instruction book they have used at home. Beyond this general training, those who desire it are instructed in selected classes, and in private lessons. Professor Ambrose gives special attention to a Normal Class for the training of music teachers.

WAX FRUIT AND FLOWERS.

An accomplished teacher will instruct in this beautiful art, if required.

ART DEPARTMENT.

The course of study in this art is systematic, comprehensive and artistic, laying a foundation in the laws of perspective, and proceeding so progressively as to lead the student pleasantly on from elementary pencilling from model to original sketching and coloring in oil, in water, or in pastel.

This department is under the charge of Prof. H. Martin, O. S. A., who possesses enthusiasm in his art, and an experience of over thirty years' acquaintance with the Schools of Painting in Europe and America and a large and costly collection of models. If desired, advanced pupils may make arrangements for lessons in the Art of Painting in Porcelain and Pottery. Mr. Martin visited last year the celebrated manufactories of England, to acquaint himself with the modern styles of ornamentation. During this year a number of pupils made marked progress in Pottery painting.

ISGELLANY.

LECTURES.

Frequent informal lectures will be given upon topics connected with health, manners, etc. Courses of Lectures will be delivered on Astronomy, Chemistry, Natural Philosophy, History and Æsthetics.

LIBRARY.

The Institution is furnished with a Library of several hundred newly selected volumes of general reading and for reference, also a Reading Room. Two of the largest Cyclopedias always accessible; also both the unabridged Dictionaries.

A cabinet of Geological and Botanical specimens, and of Historical and General Curiosities and Illustrations of Natural History has been commenced, and will be carried on as rapidly as circumstances will allow. More than a thousand Geological Specimens are in the cabinet, containing an assortment of the fossils of all the strata, both of this continent and of Europe. Additions are constantly being made to this collection under the supervision of Prof. Wright. Contributions and exchanges are invited.

APPARATUS, MAPS, ETC.

This Institution is furnished with a fine set of Maps, Globes, Physiological Charts, a Microscope, and Philosophical and Chemical Apparatus. The sets of charts for Geology and Botany are very complete and beautifully colored.

LITERARY SOCIETY.

This Society consists of students of the third and fourth years. Its object is Literary Improvement. Weekly meetings are held, at which original articles are presented and selections from the best authors are read, varied with music and criticisms. It is in a flourishing condition.

The officers for the past year were—

| | |
|------------------------|--------------------|
| <i>President.</i> | MISS M. PEARSON. |
| <i>Vice-President,</i> | MISS L. G. LISTER. |
| <i>Secretary,</i> | MISS C. M. WILSON. |
| <i>Treasurer,</i> | MISS G. SUTTON. |

JUNIOR LITERARY SOCIETY.

This Society was organized for those students not in the other society, and has been of great interest and profit to its members. Its object and exercises are similar to those of the other society.

The officers during the past year were as follows :—

| | | |
|------------------------|-----------|---------------------|
| <i>President,</i> | - - - - - | Miss B. SMITH. |
| <i>Vice-President,</i> | - - - - - | Miss E. M. ELLIOTT. |
| <i>Secretary,</i> | - - - - - | Miss H. BRADLEY. |
| <i>Treasurer,</i> | - - - - - | Miss E. GRAFTON. |

THE PORTFOLIO.

Two years ago *The Portfolio* was started under the editorial control of the Literary Society. It has thus far shown signs of real vitality and vivacity, and is destined to be a strong bond of union between students and ex-students. It solicits contributions from Alumnae and friends generally. Its editors will be selected from the literary societies. It began its mission in the editorial hands of Miss Minnie Erb and Miss Lily Bryson. Its editors this year have been Miss Lily Bryson and Miss Minnie Buck. It is published monthly, at \$1 per year.

Prizes.

GOVERNOR GENERAL'S PRIZE.

His Excellency the Governor General has generously offered a Silver Medal for the best examination in English Literature, said examination to embrace not only English Literature in general, but some particular author or authors.

PRIZES FOR COMPOSITION.

Dennis Moore, Esq., of Hamilton, offers for the coming year two prizes as heretofore, open to all students of the College—the first of \$25, the second of \$15. The subject of the essay to be assigned at the opening of the third term. The subject for this year is "Chaucer and his Times." Several other valuable Prizes have been offered and will be competed for next year. It is our desire, however, to avoid giving undue prominence to Prizes.

MERIT ROLL.

A record of standing, literary and moral, is daily kept ; and cards corresponding to this record are given to the students once a fortnight, and should be transmitted to parents for information. An Honor Card is received by Pupils entitled to it at the end of each term.

HONORS OF THE INSTITUTION.

Two courses of study have been established, a Classical and an English; and Diplomas will be given to those who satisfactorily complete either of them. The title of M. L. A., or Mistress of Liberal Arts, is given to the former, M. E. L., or Mistress of English Literature, to the latter. Certificates may be had by those who pass an examination in a partial course. Diplomas will be given to those who complete the course in Music.

A good moral standing is necessary in order to obtain either Certificate or Diploma.

BOARDING, ETC.

The Institution, as a home, is designed to be the abode of comfort and pleasant associations.

Rooms are carpeted and furnished throughout, so that the pupil requires nothing in addition. Napkins are not provided.

The provision for the table is wholesome and abundant.

GOVERNMENT.

It is intended that the government of the Institution shall be firm without being arbitrary; that it shall be founded upon confidence in the pupils, and that its tendency shall be to teach them self-control, obedience to *principles*, and a conscientious regard for right.

No young lady will be allowed to retain her connection with the school, whose example tends to encourage indolence or insubordination, or whose influence in other respects is injurious.

PRINCIPLES.

Truthfulness in opposition to pretence, patriotism, love of home, devotion to parents, simplicity, avoidance of *heartlessness* and *display*.

DRESS, ETC.

Every young lady must be provided with thick boots, umbrella and overshoes.

School-room dresses should be simple and inexpensive, with high necks and long sleeves.

Every article belonging to a student should be marked with her full name before leaving home.

Very little jewelry or spending money should be at her disposal.

Carelessness and the possibility of dishonesty in servants, etc., make it proper that all funds should be deposited with the officer appointed for that purpose.

STUDENTS' CORRESPONDENCE.

Students are allowed to correspond with the home circle without any supervision; but correspondence beyond the home circle is not allowed without special permission, and letters not having this permission may be forwarded by the Principal to the parents.

On entering, a list of correspondents is to be given in, signed by the parent or guardian.

Some students have had too large a correspondence, occupying too much time, and diverting attention from school duties. This will, in future, be controlled.

~~Such~~ Candies, cakes, and eatables generally, sent from home, cause the receiver one or two days' sickness, and are a most pernicious kindness.

SESSION HOURS.

For recitation and study, from 10 minutes to 9 to 1 P. M. Study hours 6.30 to 7.30 A. M.; 4 to 5.30 P. M.; and 7 to 9.00 P. M.

It is understood to be necessary that Day Students should spend at least two hours in study at home. Parents may be assured that something is wrong unless this is done.

Punctuality in the attendance of Day Students is of the utmost consequence. Tardiness results not only in loss to themselves, but is injurious to classes, and tends to general disorder. Tardiness and unexcused absence will stand against deportment on the cards. All excuses must be signed by the name of Parent or Guardian. Day pupils should be present at the Roll Call in the morning, absence often causes serious inconvenience.

VISITING AND RECEIVING VISITS.

STUDENTS' RECEPTION DAYS.—Friday afternoon and Saturday.

All persons except immediate relatives, wishing to visit students, are expected to present a letter from Parents or Guardians, or to be otherwise *suitably* introduced. Visits without this preliminary must be declined.

Students are allowed, at proper times, to visit such families as the Parents or Guardians may name to the Governor or Principal, but not to remain out over night, or over the Sabbath, except at the house of some near relative. Friends who are inviting must call for the young ladies and return with them.

When students visit friends in the city, they will not be allowed to go except in charge of some one fully responsible. They will not visit any but the families, nor be allowed to visit from the house, make calls, walk about the streets, or visit shops and stores. Where this rule is violated students cannot be allowed to visit.

Young ladies are not allowed to receive invitations until they have been submitted to the Principal.

It is hoped that persons entitled to call upon students will adapt themselves to the hours of the institution. Officers would not like to disoblige, but must refuse permission to students to see their friends during recitation hours (from 9 to 1 30), except in *Special cases*.

SHOPPING.

It is desired that students should be supplied, if possible, with all necessary things before leaving home. To provide, however, for necessities that may occur, students will be permitted to do shopping once a month, always accompanied by a teacher.

ATTENDING DIFFERENT CHURCHES.

Although the College is denominational in name, it is not sectarian in any sense. Several churches are represented in its faculty. Students attend those churches selected for them by their parents or guardians and all students are required to attend on each Sabbath unless excused.

Earnest efforts will be made to produce a strong conviction of the paramount importance of personal religion. There are Bible Classes on Sabbath afternoons, conducted by members of the faculty.

CALENDAR.

The College year consists of four terms of ten weeks each. The first term will begin on September 1st, and end on November 10th; the second term will begin on November 10th, and end on February 2nd; the third term will begin on February 2nd, and end on April 13th; the fourth term will begin on April 13th, and end on June 22nd.

A vacation of two weeks is allowed at Christmas beginning on December 22nd and closing on the evening of January 4th.

EXPENSES.

| | |
|---|--------|
| Board with apartments completely furnished, lineus, table | |
| requisites etc., per week, | \$3 00 |
| Fuel, light, washing, (dresses extra.) per week, | 50 |
| Preparatory department, per term, | 5 00 |
| Academic " " | 6 00 |
| Collegiate " " | 8 00 |
| Incidentals, School Rooms, etc., | 1 00 |

EXTRAS.

INSTRUMENTAL MUSIC—

| | | |
|---|------------------------|---------|
| From the Professor, | per term, | \$12 00 |
| From a Lady teacher, | " | 8 00 |
| Private Vocal Lessons, | 8 00, 10 00, and 12 00 | |
| Choral Class, | " | 2 00 |
| Use of Instrument (one hour daily), | " | 2 00 |
| Drawing, | " | 8 00 |
| Water Colors, | " | 10 00 |
| Oil Painting, | " | 12 00 |
| French, | " | 4 00 |
| German, | " | 4 00 |
| Italian, | " | 4 00 |
| Calisthenics, | " | 1 00 |
| Riding, | " | 5 00 |

Special rooms or single bed, 25 cents per week extra.

Meals taken to rooms will be charged extra.

Students on entering should be provided with about \$5.00 for text books, etc. The Graduation fee for Diploma is \$5.00.

20 per cent discount on all fees is allowed to daughters of Ministers of all denominations.

All bills payable quarterly in advance.

The above rates are barely sufficient to maintain the Institution in its growing efficiency, and with our present convictions of what a Ladies' College should be, those rates are more likely to be raised than to be lowered. If any College in the land can afford lower rates, we can. We are carrying no oppressive debts: we are able to turn every dollar of income to the legitimate work of education. Hamilton furnishes us with all the facilities of market we could desire, and at reasonable rates. Hence we know that our charges are the very minimum; and where rates are lower than ours, it must be at the sacrifice of efficiency and comfort. Our purpose is not to compete with those who are traversing the country advertising boarding houses under the name of Colleges, but to aid in the higher education of woman, by bringing advanced facilities within easy reach of all, at very reasonable rates. As will be seen by our catalogue, our College is largely patronized by the City of Hamilton, although in educational facilities our City stands preeminent. As the influence of college life is so lasting, we would suggest to parents the advisability of visiting the Institution in which they intend to place their daughters, of making strict enquiry touching board and other physical comforts, as well as the educational facilities that are afforded.

\$12 00
 8 00
 00, and 12 00
 2 00
 2 00
 8 00
 10 00
 12 00
 4 00
 4 00
 4 00
 1 00
 5 00

\$5.00 for text

of Ministers

stitution in
 hat a Ladies'
 l than to be
 we can. We
 lar of income
 s with all the
 Hence we
 rates are lower
 comfort. Our
 country ad-
 o aid in the
 within easy
 ur catalogue,
 although in
 influence of
 visability of
 laughters, of
 comforts, as

Alumnae Association.

"Vita sine literis mors est."

THIS Association was established in June, 1868. The objects in view are the intellectual improvement of the members and the advancement of the interests of the Institution with which it is identified.

Through the indefatigable efforts of the resident Alumnae, this Association has been a constant advantage to the College. The Commencement week offers many opportunities to the ever loyal Alumnae to show their attachment to their *alma mater*, and the conversazione of the Association is among the most brilliant entertainments of the year. But their activity is not entirely spent on such feasts as this; they have been the means of bringing before the students of the College and citizens of Hamilton the very best talent on the lecture platform of the Continent, and every year has this been repeated since the organization of the Association. Last year Dr. Tiffany, of New York, lectured in Commencement week, under their auspices, and in the winter the Rev. Dr. Peck, of Brooklyn, lectured twice for them. These lectures were rare treats, both for students and citizens, and will not soon be forgotten.

A somewhat novel experiment was tried by the Association during the year—the securing of the services of the celebrated Miss Dods, of the Kensington Art School, of London, who delivered in the College Dining Hall, a series of lectures on Cookery, extending over a month, which were patronized not only by the College but also by the best families of the city.

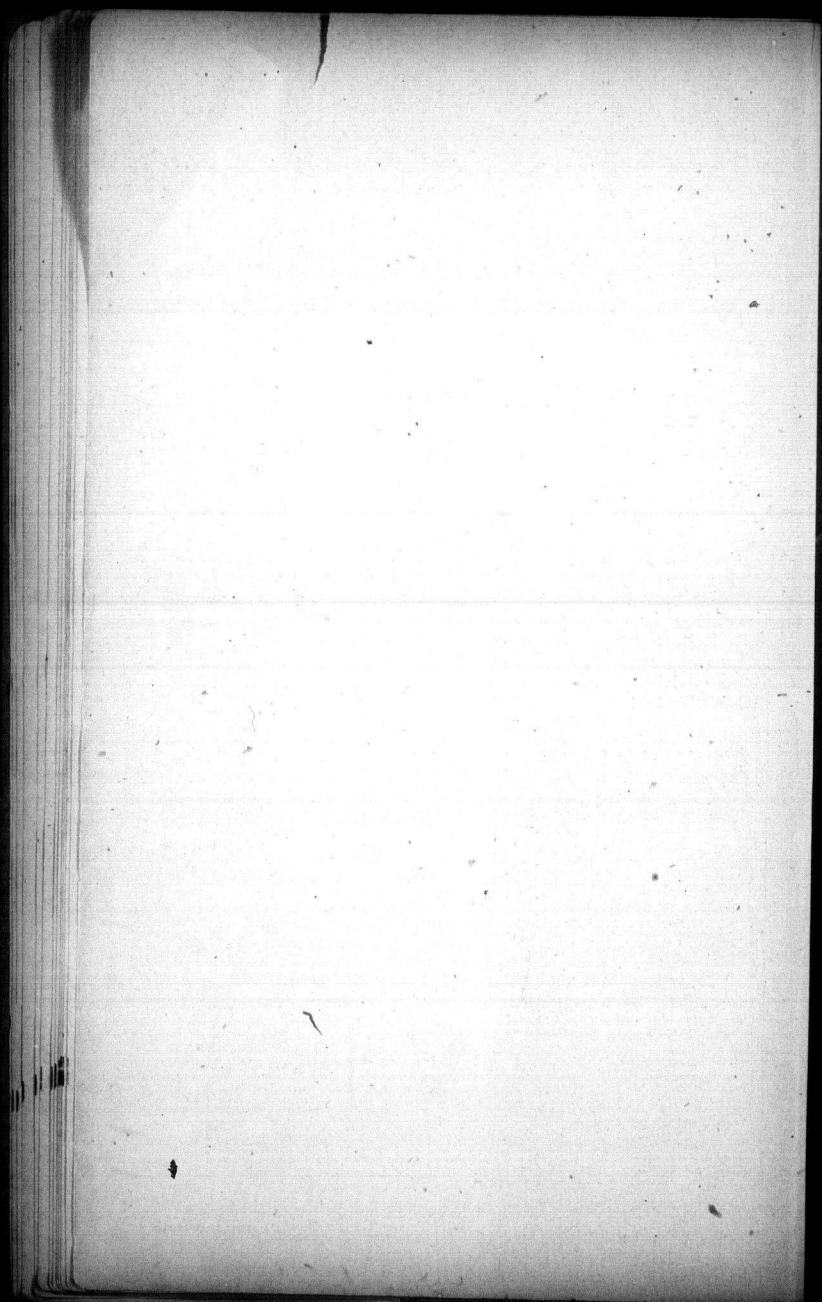
The Association shows no signs of growing weary in well doing, and so we may anticipate for next year the continuance of those choice lectures and concerts. The addition of this year's class will make the number of Alumnae 148.

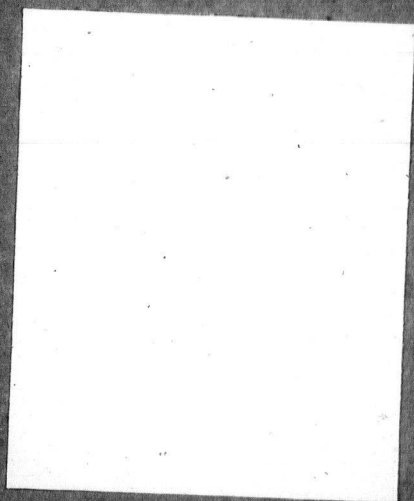
Any graduate becomes a member of the Association by the payment of the annual fee of \$1.00.

Any member changing either name or address is requested to make the same known to the Secretary, Miss Minnie White, Hamilton.

The following are the Officers for the present year:

| | |
|------------------------|---------------------------|
| President, | Mrs. PRATT, M.L.A. |
| 1st Vice-President, | Miss WALTON, M.E.L. |
| 2nd Vice-President, | Mrs. BIRELY, M.E.L. |
| Corresponding Sec., | Miss ANNIE LISTER, M.E.L. |
| Recording Sec.-Treas., | Miss MINNIE WHITE, M.L.A. |





WESLEYAN FEMALE COLLEGE, HAMILTON, ONT.

