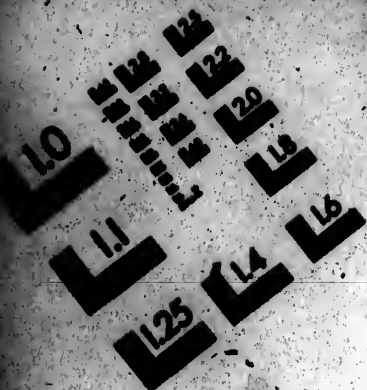




Association for Information and Image Management

1100 Wayne Avenue, Suite 1100
Silver Spring, Maryland 20910

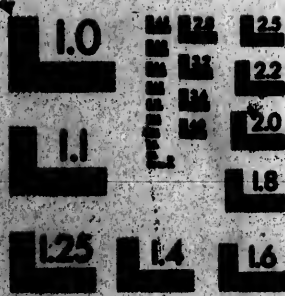
301/587-0982



Centimeter



Inches



**CIHM
Microfiche
Series
(Monographs)**

**ICMH
Collection de
microfiches
(monographies)**



Canadian Institute for Historical Microreproductions / Institut canadien de microreproductions historiques

© 1994

Technical and Bibliographic Notes / Notes techniques et bibliographiques

The Institute has attempted to obtain the best original copy available for filming. Features of this copy which may be bibliographically unique, which may affect any of the images in the reproduction, or which may significantly change the usual method of filming, are checked below.

L'institut a microfilmé le meilleur exemplaire qu'il lui a été possible de se procurer. Les détails de cet exemplaire qui sont peut-être uniques du point de vue bibliographique, qui peuvent modifier une image reproduite, ou qui peuvent entraîner une modification dans la méthode normale de filmage sont indiqués ci-dessous.

Coloured covers/
Couvertures de couleur

Coloured pages/
Pages de couleur

Covers damaged/
Couvertures endommagées

Pages damaged/
Pages endommagées

Covers restored and/or laminated/
Couvertures restaurées et/ou pelliculées

Pages restored and/or laminated/
Pages restaurées et/ou pelliculées

Cover title missing/
Le titre de couverture manque

Pages discoloured, stained or foxed/
Pages décolorées, tachetées ou piquées

Coloured maps/
Cartes géographiques en couleur

Pages detached/
Pages détachées

Coloured ink (i.e. other than blue or black)/
Encre de couleur (i.e. autre que bleue ou noire)

Showthrough/
Transparence

Coloured plates and/or illustrations/
Planches et/ou illustrations en couleur

Quality of print varies/
Qualité inégale de l'impression

Bound with other material/
Relié avec d'autres documents

Continuous pagination/
Pagination continue

Tight binding may cause shadows or distortion along interior margin/
La reliure serrée peut causer de l'ombre ou de la distorsion le long de la marge intérieure

Includes index(es)/
Comprend un (des) index

Blank leaves added during restoration may appear within the text. Whenever possible, these have been omitted from filming/
Il se peut que certaines pages blanches ajoutées lors d'une restauration apparaissent dans le texte, mais, lorsque cela était possible, ces pages n'ont pas été filmées.

Title on header taken from:
Le titre de l'en-tête provient:

Title page of issue/
Page de titre de la livraison

Caption of issue/
Titre de départ de la livraison

Method/
Générique (périodiques) de la livraison

Additional comments:
Commentaires supplémentaires:

This item is filmed at the reduction ratio checked below/
Ce document est filmé au taux de réduction indiqué ci-dessous.

10X	14X	18X	22X	26X	30X
<input type="checkbox"/>	<input type="checkbox"/>	<input type="checkbox"/>	<input checked="" type="checkbox"/>	<input type="checkbox"/>	<input type="checkbox"/>
12X	16X	20X	24X	28X	32X

The copy filmed here has been reproduced thanks to the generosity of:

Metropolitan Toronto Reference Library
Baldwin Room

The images appearing here are the best quality possible considering the condition and legibility of the original copy and in keeping with the filming contract specifications:

Original copies in printed paper covers are filmed beginning with the front cover and ending on the last page with a printed or illustrated impression, or the back cover when appropriate. All other original copies are filmed beginning on the first page with a printed or illustrated impression, and ending on the last page with a printed or illustrated impression.

The last recorded frame on each microfiche shall contain the symbol \rightarrow (meaning "CONTINUED"), or the symbol ∇ (meaning "END"), whichever applies.

Maps, plates, charts, etc., may be filmed at different reduction ratios. Those too large to be entirely included in one exposure are filmed beginning in the upper left hand corner, left to right and top to bottom, as many frames as required. The following diagrams illustrate the method:



L'exemplaire filmé fut reproduit grâce à la générosité de:

Metropolitan Toronto Reference Library
Baldwin Room

Les images suivantes ont été reproduites avec le plus grand soin, compte tenu de la condition et de la netteté de l'exemplaire filmé, et en conformité avec les conditions du contrat de filmage.

Les exemplaires originaux dont la couverture en papier est imprimée sont filmés en commençant par le premier plat et en terminant soit par la dernière page qui comporte une empreinte d'impression ou d'illustration, soit par le second plat, selon le cas. Tous les autres exemplaires originaux sont filmés en commençant par la première page qui comporte une empreinte d'impression ou d'illustration et en terminant par la dernière page qui comporte une telle empreinte.

Un des symboles suivants apparaîtra sur la dernière image de chaque microfiche, selon le cas: le symbole \rightarrow signifie "A SUIVRE", le symbole ∇ signifie "FIN".

Les cartes, planches, tableaux, etc., peuvent être filmés à des taux de réduction différents. Lorsque le document est trop grand pour être reproduit en un seul cliché, il est filmé à partir de l'angle supérieur gauche, de gauche à droite, et de haut en bas, en prenant le nombre d'images nécessaire. Les diagrammes suivants illustrent la méthode.



The PERMANENT EXHIBITION

OF MANUFACTURES



& Commercial Exchange

OPEN FREE TO THE PUBLIC

63.64 67.69

FRONT STREET AND QUEENS HOTEL

NICHOLLS & HOWLAND

TORONTO



The Acknowledged Mantle House of Canada

We have the Largest, Cheapest and Choicest
Selection of Ladies', Misses' and
Children's Garments shown.

Cloaks to Order a Specialty Improved System of Cutting
Perfect Fit Guaranteed

J. Pittman & Co.

MANTLE MANUFACTURERS & IMPORTERS

218 YONGE STREET, Cor. Albert St.

TORONTO

GUIDE

TO THE

CITY OF TORONTO

PRESENTED BY THE

Permanent

Exhibition of

Manufactures



NICHOLLS & HOWLAND

TORONTO, CANADA.

Canadian Rubber Co'y

Cor. Front & Yonge Sts., TORONTO

MANUFACTURERS OF

RUBBER SHOES, FELT BOOTS, RUBBER BELTING, PACKING
ENGINE, HYDRANT, SUCTION, STEAM, BREWERS'
AND FIRE HOSE

VALVES, GASKETS, CAR SPRINGS, WRINGER ROLLS, CARRIAGE
CLOTHS, RUBBER BLANKETS, STOPPERS, &c.

RUBBER HORSE CLOTHING

LADIES' AND GENTLEMEN'S TWEED AND GOSSAMER CLOTHING

MOULD GOODS OF EVERY DESCRIPTION

J. H. WALKER, - - - MANAGER

HERR PIANOS

THE

Leading Canadian Instruments

Endorsed by the Musical Faculty

PRICES AND TERMS TO SUIT ALL PURCHASERS

OTHER INSTRUMENTS TAKEN IN EXCHANGE

SPECIAL DISCOUNT FOR CASH

The Public are respectfully invited to inspect our Stock, or send for Illustrated Catalogue and Price List.

HERR PIANO CO., MANUFACTURERS

TEMPORARY WAREHOUSES

FACTORY

47 QUEEN STREET EAST

90, 92 AND 94 DUKE STREET

OPP. METROPOLITAN CHURCH

TORONTO

CONTENTS



The City of Toronto
Permanent Exhibition of Manufactures
Places of Interest and Public Buildings
Principal Churches
Toronto Banks
Public Parks
Educational Institutions
Foreign Consuls
National Societies
Libraries
Toronto Clubs
Cab Tariff
Postal Guide
Officers of Toronto Board of Trade
 " Canadian Manufacturers' Association
Permanent Exhibition Guide
List of Exhibitors
 " Advertisers
Street Railway Time Table
Officers of the Industrial Exhibition Association
Fire Alarm Boxes
Travellers' Guide
Hotel Guide

COOK & BUNKER

MANUFACTURERS OF

RUBBER AND METAL HAND STAMPS

Daters, Self-inkers and Pocket Stamps

Railroad and Banking Stamps, Notary Public and Society Seals, Steel
Stamps and Stencils Cut to Order

Also Gold Gilding and Picture Framing a Specialty

36 King Street West - - - TORONTO

ROSS, HILYARD & CO.

WHOLESALE IMPORTERS

DRY GOODS

UPHOLSTERERS' TRIMMINGS

3 Wellington Street West - - - TORONTO

ELIAS ROGERS & CO.

BEST QUALITY COAL AND WOOD

LOWEST PRICES

Head Office - - - 20 King Street West

ALEXANDER & CABLE

ENGRAVERS

Fine Work in Invitation and Visiting Cards. Wedding, At Home and
Professional Cards.

LITHOGRAPHERS

Show Cards, Maps, Plans, Views of Buildings, Machines, Etc.

Wood Engraving in all its Branches

Mail Building - - - TORONTO .

THE CITY OF TORONTO



FROM PAMPHLET ISSUED BY TORONTO BOARD OF TRADE



THIS fair city of ours, stretching along the blue waters of Lake Ontario, is not the largest city in our young Dominion, but even her more populous rival does not deny that she is the fairest and the most full of promise; and by common consent she is known all Canada over as the "Queen City of the West." Her progress has not been a slow and dreary pace; for her veins are full of vitality, and her heart fired with ambition. Some of the most enterprising spirits in Canada are ranked among her citizenship, and she counts among her business houses some of the greatest and most important trade institutions in the country. In all those factors that go to make a community prosperous and worthy, she will be found well supplied. No poisonous slums exist within her limits to harbor pestilence; her streets no longer lie under their old reproach, for many of them are paved and cleanly. Societies of every description of benevolent, moral and elevating aim, are busy among her citizens; her educational system is perfect as the age can give, and education has become the property of one and all. In art, too, she has much to show; and her late festival of choruses promises that in music she is destined to win a world-wide fame. The power of the pulpit in Toronto is great; and she emphatically is a church-going city. In walking her thoroughfares you find no empty houses; new buildings are being reared, and not in pairs, but frequently in whole streets. Consolidation and unification are going on by the incorporation, with the Queen City herself, of those thriving suburbs that girdle her loins with clusters of little communities—industrious, ambitious and intelligent.

RAILWAYS

From the heart of the city diverge a number of railways drawing to their wheels the products of the fairest and most fruitful portion of Ontario. For all this territory she is the distributing point, sending to the farmer what he needs of her manufactures, and receiving from him the product of his field and farm. Our chief mercantile houses are known to stand upon steady foundations; our Banks are here sturdy and in full force; and literature finds here the centre. In short, this young Queen of the West is the delight of all who come within her gates; and one who has enjoyed her citizenship seldom cares to cast his lot in any other quarter. We shall now briefly, and in regular order, touch upon the chief attractions which we have to offer the tourist who is desirous of spending a brief period here.

91 YONGE ST. The E. & C. Gurney Co. YONGE ST. 91
(LTD.)

STOVES - -

- - RANGES

KITCHEN FURNISHING GOODS

FURNACES

THE BEST IN THE MARKET

SATISFACTION GUARANTEED

ESTIMATES OF COST AT SHORT NOTICE

GRATES

REGISTERS

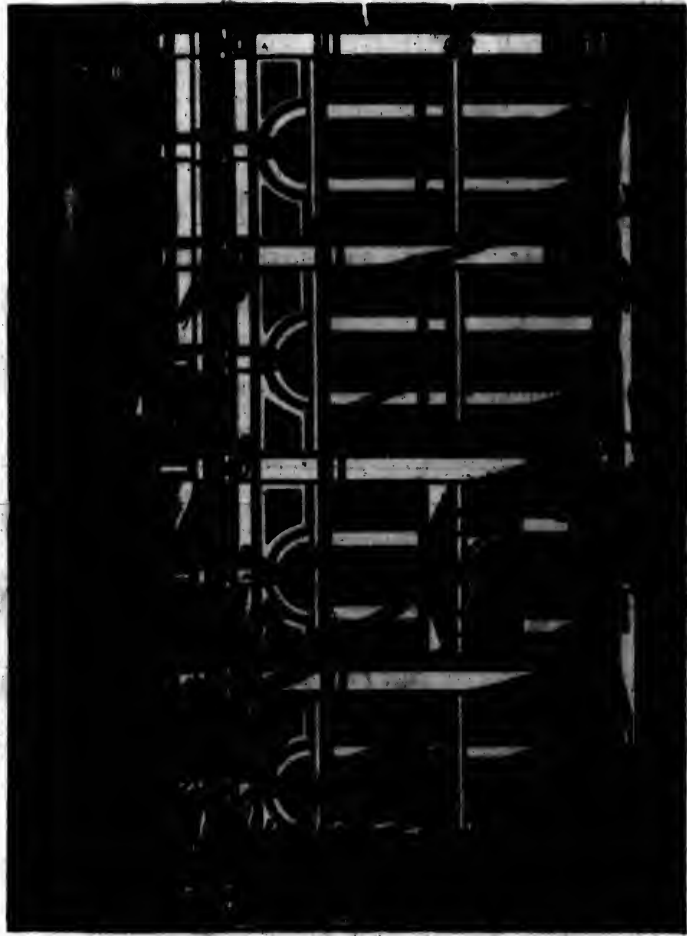
MANTELS

BRASS FIRE GOODS

IN GREAT VARIETY

THE E. & C. GURNEY CO

91 YONGE STREET



PERMANENT EXHIBITION BUILDING



ASK YOUR DEALER
FOR
BROOKS' SPOOL COTTON

SPECIALLY FINISHED FOR SEWING
MACHINES

MONEY TO LOAN

Telephone No. 1398

EDWARD J. BARTON

LAND, LOAN AND INSURANCE AGENT

Property Bought, Sold and Exchanged

ESTATES MANAGED

RENTS COLLECTED

Houstead's Building, 10½ Adelaide Street East (up-stairs)

Toronto, Ont., Canada

B. & W. are the Popular
Printers of Canada

D. BROWN

R. C. WILSON

"Their work speaks their worth."

Their Telephone No. is 50. Their

Office is in the Lakeside Court,

25½ Adelaide St. East, Toronto.

PLACES OF INTEREST AND PUBLIC BUILDINGS

Permanent Exhibition of Manufactures, 63, 65, 67, 69 Front St. W.
Custom House, Cor. Front and Yonge Sts.
Lieutenant-Governor's Residence, Cor. of King and Simcoe Sts.
Parliament Buildings, Front St.
St. Andrew's Church, Cor. King and Simcoe Sts.
Central Prison, Strachan Ave.
Zoological Gardens, Industrial Exhibition Grounds.
Industrial Exhibition Grounds and Palace.
Osgoode Hall, Law Courts, Queen St., opp. York St.
University Buildings, Queen's Park.
Monument to the Volunteers who fell at Ridgeway, Queen's Park.
Monument to the late Hon. George Brown, Queen's Park.
Provincial Lunatic Asylum Grounds, Queen St.
Normal School, Museum, etc., Gould St.
Horticultural Gardens, Gerrard St.
St. Michael's Cathedral (Roman Catholic), Bond St.
St. James' Cathedral (Episcopal), King St., cor. Church St.
St. Lawrence Market and City Hall Buildings, King and Front Sts.
Metropolitan Church (Methodist), Queen St.; Cor. Church St.
Baptist Church, Jarvis St., Cor. Gerrard St.
Canadian Institute, Richmond St. E.
Old St. Andrew's Church, Jarvis St.
Unitarian Church, Jarvis St.
Post Office, Adelaide St.
Public Library, Church St., Cor. Adelaide St.
General Hospital, Gerrard St. E.
Rooms of the Ontario Society of Artists, 14 King St. W.
The Cemeteries—The Necropolis, St. James' and Mount Pleasant.
The Rosedale Bridges, the Bank Buildings, etc.

PLACES OF AMUSEMENT

Pavilion Music Hall, Horticultural Gardens, Gerrard St. E.
Grand Opera House, 5 Adelaide St. W.
Toronto Opera House, 27 Adelaide St. W.
Caledonian Skating Rink, Mutual St. E.
Granite Skating Rink, 471 Church St.
Metropolitan Roller Rink, 31 Shaw St. W.
Moss Park Skating Rink, Shuter St. E.
Hanlan's Point, the Island.
Zoological Gardens, Exhibition Grounds, Dufferin St. W.
Wiman Baths, the Island.
Turner Baths, the Island.
Doty's Pavilion, the Island.
Cyclorama, Front St. West, Cor. York St.

H. S. HOWLAND, SONS & Co.

Wholesale Hardware

37 Front Street West
TORONTO, CANADA

Correspondence and Orders Solicited

IMPROVED ROLLER COPIER

**For Instantly Copying Letters and all kinds
of Business Papers**

A MARVEL OF UTILITY

**And a Continual Source of Satisfaction to those
using it.**

CALL AND SEE IT

At The Schlicht & Field Co., Limited

31 ADELAIDE ST. EAST, TORONTO

MANUFACTURERS OF

**Labor-Saving Office Devices, Letter & Document
Files & Filing Cabinets**



TORONTO BANKS AND WHERE THEY ARE SITUATED

Assistant Receiver General's Office, Toronto Street.

Bank of British North America, cor. Yonge and Wellington Streets.

Bank of Montreal, cor. Yonge and Front Streets.

Bank of Toronto, cor. Church and Wellington Streets.

Canadian Bank of Commerce, 59 Yonge Street.

Central Bank of Canada, 51 Yonge Street.

Dominion Bank of Canada, cor. King and Yonge Streets.

Federal Bank of Canada, Wellington Street West, opp. Jordan St.

Imperial Bank of Canada, Wellington Street East, Cor. Leader Lane.

Merchants' Bank of Canada, 13 Wellington Street West.

Molson's Bank, cor. King and Bay Streets.

Ontario Bank, cor. Wellington and Scott Streets.

Quebec Bank, cor. King and Toronto Streets.

Standard Bank of Canada, cor. Jordan and Wellington Streets.

Traders' Bank, cor. Yonge and Wellington Streets.



JAS. S. HENDERSON & CO.

IMPORTERS

Wall Papers, Decorations, Etc.

139 YONGE STREET

ARCADE BUILDINGS

100 RAPHAEL TUCK'S PANELS
A SPECIALTY

TORONTO, ONT.



Gate City Stone Filter Co.

HARD BURNT

Brown Stone Water Filters

\$4 to \$20 according to Size

These Filters last a life-time. No parts to fix or change. As easily cleaned as an ordinary water pail. No metal used. All common metals generate poison when in contact with water. No charcoal, sand or other compound used. They all absorb, retain, and become fatal with living organisms. Charcoal, either animal or vegetable, has no chemical effect on water. The heavy rains and melting of snow and ice render the filtering of the water you drink a necessity at all times.

Address PERMANENT EXHIBITION OF MANUFACTURES

63-69 FRONT STREET WEST

NICHOLLS & HOWLAND



CHURCHES

Denomination.	Churches.	Principal Church.	Location.
Baptist	12	Jarvis Street.	Cor. Jarvis and Gerrard Streets.
Bible Christian	4	Agnes Street	Cor. Agnes and Teraulay Streets.
Catholic Apostolic	1	Catholic Apostolic	Cor. Gould and Victoria Streets.
Congregational	6	Bond Street	Cor. Bond Street and Wilton Avenue.
Christadelphian	2	Albert Street	Albert St., north side, near Yonge St.
Episcopal	25	St. James' Cathedral	Cor. Church and King Streets.
Episcopal (Reformed)	2	Christ Church	Cor. Simcoe and Caer Howell Streets.
Hebrew Synagogue	1	Hebrew Synagogue	29 Richmond Street East.
Lutheran	1	Lutheran	114 Bond Street.
Methodist	22	Metropolitan	Queen St. E., between Bond & Church Sta.
Presbyterian	16	Old St. Andrew's	Cor. King and Simcoe Streets.
Roman Catholic	9	St. Michael's Cathedral	Shuter St., bet'w'n Bond & Church Sta.
Unitarian	1	First Unitarian	26 Jarvis Street.
New Jerusalem	1	New Jerusalem	Elm Street.
Society of Friends	1	Society of Friends	28 Pembroke Street.
Salvation Army	6	Salvation Temple	Cor. James and Albert Streets.





PUBLIC PARKS

Bellwoods Park.

High Park.

Horticultural Gardens.

Ketchum Park.

Kew Gardens.

Long Branch.

Lorne Park.

Queen's Park.

Riverdale Park.

Riverside Park.

Victoria Park.



TORONTO CLUBS

- Albany Conservative Club. 75 Bay Street.
Argonaut Rowing Club. Foot of York Street.
Athenæum Club. Corner Adelaide and Church Streets.
Bayside Rowing Club. Foot of Scott Street.
Caledonia Curling Club. Mutual Street Rink.
Don Rowing Club. King Street, near Don Bridge.
Granite Curling Club. 471 Church Street.
Moss Park Curling Club. Shuter Street.
National Club. 98 Bay Street.
Ontario Jockey Club.
Ontario Lacrosse Club.
Ontario Reform Club. 63 Wellington Street W.
Queen City Driving Club. 9 Berti.
Royal Canadian Yacht Club. Club House, Island.
Toronto Athletic Club.
Toronto Base Ball Club. Meets at Woodbine Hotel.
Toronto Bicycle Club. 5 Wilton Avenue.
Toronto Chess Club. Public Library Building.
Toronto Club. 79 York Street.
Toronto Cricket Club.
Toronto Draught Club. Mutual Street Rink.
Toronto Fencing Club. 40 Church Street.
Toronto Golf Club.
Toronto Gun Club.
Toronto Hunt Club.
Toronto Lacrosse Club.
Toronto Press Club. 148 Bay Street.
Toronto Reform Association. Room V., Yonge Street Arcade.
Toronto Rowing Club. Foot of York Street.
Toronto Sailing Skiff Club. Foot of Lorne Street.
Toronto Snowshoe Club.
Toronto Toboggan Club. Rosedale.
Toronto Yacht Club. Foot of Simcoe Street.
Wanderers' Bicycle Club. Victoria Street.
Young Men's Prohibition Club. Cor. Victoria and Richmond Sts.



TORONTO STREET RAILWAY



Union Station and North Toronto (RED LIGHT).—From Cor. Front and York to North Toronto. First car leaves Cor. Front and York Sta. 5-35 a.m.; North Toronto 6-08 a.m. Last car leaves Cor. Front and York Sta. 11-35 p.m.; North Toronto 12-08 a.m.; intervening every 10 minutes. Connects with Metropolitan St. Ry.

Yonge Street (RED LIGHT).—From Market to Cor. Yonge and Scollard Sta. First car leaves Market at 6-35 a.m.; Scollard 7-08 a.m. Last car leaves Market 11-25 p.m.; Scollard 12-05 a.m.; intervening every 5 minutes.

Queen Street (WHITE LIGHT).—From Market to Parkdale. First car leaves Market 5-30 a.m.; Parkdale 6-05 a.m. Last car leaves Market 11-30 p.m.; Parkdale 12-05 a.m.; intervening every 5 minutes.

Church Street (BLUE LIGHT).—From Cor. Front and York Sts. to Bloor St. First car leaves Cor. Front and York Sts. 5-55 a.m.; Bloor 6-20 a.m. Last car leaves Cor. Front and York Sts. 11-15 p.m.; Bloor 11-40 p.m.; intervening every 10 minutes.

Sherbourne Street (RED LIGHT).—From Cor. York and Front Sts. to Cor. Sherbourne and Bloor Sts. First car leaves Cor. Front and York Sts. 5-50 a.m.; Bloor 6-10 a.m. Last car leaves Cor. Front and York Sts. 11-30 p.m.; Bloor 12-00 a.m.; intervening every 10 minutes.

Winchester Street (GREEN LIGHT).—From Cor. Front and York Sts. to Necropolis Cemetery. First car leaves Cor. Front and York Sts. 5-53 a.m.; Necropolis 6-13 a.m. Last car leaves Cor. Front and York Sts. 11-23 p.m.; Necropolis 11-53 p.m.; intervening every 10 minutes.

Parliament Street (WHITE LIGHT).—From Cor. Front and York Sts. to Cor. Gerrard and River Sts. First car leaves Cor. Front and York Sts. 5-48 a.m.; River 6-08 a.m.; last car leaves Cor. Front and York Sts. 11-18 p.m.; River 11-48 p.m.; intervening every 20 minutes.

King Street (BLUE LIGHT).—From the Don to Strachan Ave. First car leaves Don 5-55 a.m.; Strachan Ave. 6-20 a.m. Last car leaves Don 11-25 p.m.; Strachan Ave. 12-00 p.m.; intervening every 5 minutes.

McCaul and College Sts. (RED AND BLUE LIGHT).—From Market to Cor. College and Bathurst Sta. First car leaves Market 5-50 a.m.; Bathurst 6-20 a.m. Last car leaves Market 11-23 p.m.; Bathurst 11-53 p.m.; intervening every 10 minutes.

Seaton Village via Spadina Ave. (YELLOW LIGHT).—From Market to Cor. Bathurst and Bloor Sts. First car leaves Market 5-38 a.m.; Bloor St. 6-18 a.m. Last car leaves Market 11-24 p.m.; Bloor St. 12-04 a.m.; intervening every 15 minutes.

Spadina Ave. and Bloor Street (RED AND GREEN LIGHT).—From Market to Cor. Spadina Ave. and Bloor St. First car leaves Market 5-44 a.m.; Bloor 6-17 a.m. Last car leaves Market 10-25 p.m.; Bloor 10-58 p.m.; intervening every 20 minutes.

Queen St. and Brockton (GREEN LIGHT).—From Cor. Front and George Sts. to Dundas St. Bridge, Brockton, via King, Yonge, Queen and Dundas Sts. First car leaves Cor. Front and George Sts. 5-27 a.m.; Dundas St. Bridge 6-12 a.m. Last car leaves Cor. Front and George Sts. 10-27 p.m.; Dundas St. Bridge 11-12 p.m.; intervening every 20 minutes.

Queen St. E. and Union Station (WHITE LIGHT).—From Cor. Front and York Sts. to Cor. Queen and River Sts. First car leaves Cor. Queen and River Sts. 6-30 a.m.; Cor. Front and York Sts. 6-54 a.m. Last car leaves Cor. Queen and River Sts. 10-14 p.m.; Cor. Front and York Sts. 10-38 p.m.; intervening every 15 minutes.

Carlton and College Streets (WHITE LIGHT).—From Cor. Carlton and Parliament Sts. to Cor. College and Bathurst Sts. First car leaves Cor. Carlton and Parliament Sts. 5-30 a.m.; Cor. College and Bathurst Sts. 6-00 a.m. Last car leaves Cor. Carlton and Parliament Sts. 11-00 p.m.; Cor. College and Bathurst Sts. 11-30 p.m.; intervening every 20 minutes.

Queen Street and Parkdale (GREEN AND RED LIGHT, STRIPE IN THE CENTRE).—From Cor. King and Yonge Sts. to Cor. Queen St. and Sorauren Ave. Parkdale. First car leaves Cor. King and Yonge Sts. 5-25 a.m.; Sorauren Ave. 6-05 a.m. Last car leaves Cor. King and Yonge Sts. 10-55 p.m.; Sorauren Ave. 11-35 p.m.; intervening every 15 minutes.

Metropolitan Street Railway.—Cars run North on Yonge Street from Canadian Pacific Railway Crossing, North Toronto, every half hour, from 6-00 a.m. to 11-00 p.m., for Deer Park, Mount Pleasant, Davisville, Eglinton, etc.





GEO. E. GILLESPIE
A. ANSLEY

JOHN MARTIN
H. C. DIXON

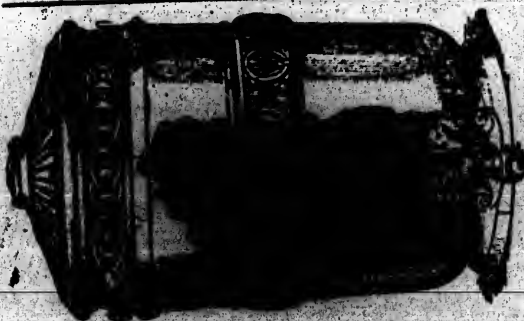
Gillespie, Ansley & Martin

Importers, Manufacturers and
Wholesale Dealers in

HATS, FURS, GLOVES AND ROBES

28 and 30 WELLINGTON STREET WEST

Toronto, Ont.



THE CELEBRATED
OAK CITY
STONE FILTERS

CAN BE HAD AT THE

Permanent Exhibition
of Manufactures

63-65
FRONT STREET WEST

NICHOLS & HOWLAND



EDUCATIONAL INSTITUTIONS

Toronto has long since gained the enviable reputation of being the literary and educational centre of the Dominion. That this is not an unwarranted assumption may be inferred from the following partial list :—

- University College.
- School of Practical Science.
- Trinity University.
- Knox College.
- St. Michael's College.
- Toronto Baptist University.
- Wycliffe College.
- Upper Canada College.
- Bishop Strachan School.
- Toronto School of Art.
- Normal and Model Schools.
- Collegiate Institute.
- And numerous public and private schools.



POSTAL GUIDE

POSTAGE RATES—LETTERS.

Letters addressed from or to places in Canada and United States.

3 cents for each half oz. or fraction thereof.

Newfoundland and Great Britain.

5 cents for each half oz. or fraction thereof.

POST CARDS, for Correspondence between Canada and the United Kingdom, may be obtained at the stamp agencies at 2 cents each, as also cards for any postal union country. Cards with a prepaid reply form attached are also provided.

N.B.—One cent postal cards, with an extra cent stamp attached, cannot be used in place of two cents postal cards, but go to Dead Letter Office, nor can anything be pasted or attached to a postal card.

City or Drop Letters for City Delivery.

1 cent for each half oz. or fraction thereof.

The above rates must in every case be prepaid by postage stamp. When posted wholly unpaid they cannot be forwarded, but will be sent to the Dead Letter Office. If insufficiently paid (not less than one full rate) double the amount of the deficient postage will be charged on delivery.

There is a counter in the post office for the sale of Stamps, Postal Cards, etc. Stamp vendors are only allowed to sell and deliver Stamps at the place mentioned in their license. A breach of this rule will entail immediate forfeiture of License. Persons selling without a license incur the risk of a heavy penalty.

Letters intended to be Registered, when addressed to places in CANADA, must be prepaid by stamp, in addition to the postage rate, 2 cents each. To the UNITED STATES, 5 cents each, and to the UNITED KINGDOM, 5 cents each. The Registration fee on all letters must be prepaid by Registration Stamps, which are not available for payment of ordinary postage. All letters for Registration should be posted 15 minutes before the hour of closing the mails.

No Letter will be accepted at this office for Registration addressed either to a fictitious name or to initials, and any such Registered Letters received from other offices, or deposited in the Letter Box for Registration, will be sent to the Dead Letter Office.

Newspapers and Periodicals

published regularly at intervals of not more than one calendar month, addressed to regular subscribers, or newdealers, resident in Newfoundland, the United States, or Canada, except at the place of publication, are transmitted free of postage.

Transient Newspapers and Periodicals addressed to places in Canada, Newfoundland and U. S.

On all newspapers and periodicals other than those from the office of publication, including all newspapers and periodicals published less frequently than once a month, the postage rate is one cent per four ounces, which must be prepaid by postage stamp.

Newspapers and periodicals weighing *less than one ounce*, may be posted singly, prepaid by postage stamp *one half cent each* to places outside the city.

Newspapers posted for city delivery must be prepaid by one cent stamp each.

Newspapers addressed to places in the United Kingdom must be prepaid by postage stamp *one cent per 2 oz., or fraction of 2 oz.*

PARCEL POST.

There is no parcel post between Canada and the United States.

A parcel post, by the Canadian steamers only, between Canada and the United Kingdom has been established. A parcel must not exceed 3 lbs. weight, nor be more than 2 ft. long by 1 ft. wide or deep. A customs declaration form must be obtained and filled up at the post-office, noting contents and value. Parcels posted without this formality are subjected to a tax of double letter rate in England. The rate from Toronto to the United Kingdom is 35 cents per lb. or fraction of a lb. By inland Canadian Parcel Post the weight of parcels is limited to 5 lbs., and the size to 2 ft. by 1 ft. The rate is 6 cents per 4 oz., or fraction of 4 oz.

MONEY ORDER OFFICE.

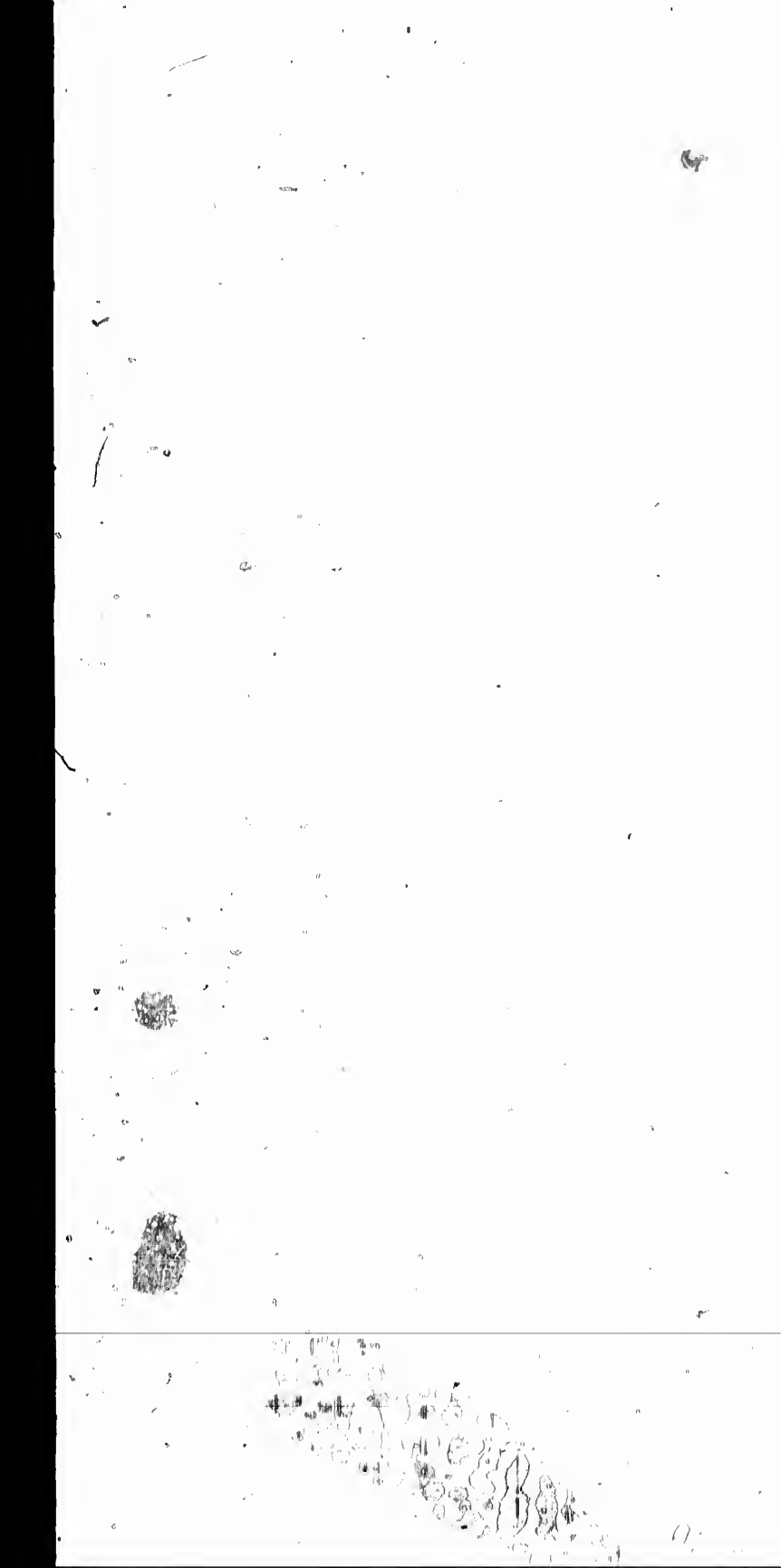
In sending money by mail it is always best to transmit by Money Order if possible. If sent by letter it should always be registered.

Money Orders issued and paid from 9 a.m. to 4 p.m.

Commission on Money Orders.

On Money Orders drawn by any Money Order Office in Canada on any other Money Order Office in the Dominion, is as follows:

If not exceeding \$4, 2c.	Over 40 not exceeding \$60, 30c.
Over 4 " " 10, 5c.	" 60 " " 80, 40c.
" 10 " " 20, 10c.	" 80 " " 100, 50c.
" 20 " " 40, 20c.	



No single Money Order, payable in the Dominion of Canada, can be issued for more than \$100; but as many \$100 each may be given as the remitter requires.

The other countries and British Colonies upon which Money Orders are granted are distinguished by an *Asterisk* (*) in the subjoined table; the rates of commission in all cases being as follows:

Over \$10	"	"	20, 20c.	Over \$30 not exceeding \$40,	40c.
"	20	"	30, 30c.	"	40
				"	50, 50c.

BOOK PACKETS

not exceeding 5 lbs. in weight can be sent to the United Kingdom.

The limit of weight for Book Packets passing in Canada is 5 lbs. The rate is 1 cent for 4 oz., also to Manitoba, North-West Territory and Victoria B. C.

Legal and Commercial Papers.

Legal and Commercial papers, posted for places in Canada, generally are subject to *letter* rate unless sent by parcel post; except deeds and insurance policies, which are allowed to go by Book Post. Postage rates on Legal and Commercial Papers, addressed to Postal Union countries, are as follows: viz., to countries where the letter-rate is 5 cents per $\frac{1}{2}$ oz., the rate of legal and commercial papers is 5 cents for the first 10 oz., and one cent for each additional two oz. or fraction; or to countries where the letter rate is 10 cents per $\frac{1}{2}$ oz., the rate is 5 cents for the first 4 oz. and 2 cents for each additional 2 oz. or fraction.

PATTERN AND SAMPLE POST.

CANADA.—Patterns and samples of merchandise, not exceeding 24 ounces in weight, when posted in Canada for places within Canada or Newfoundland, must be prepaid by postage stamp at the rate of *one cent* per 4 ounces weight, and put up in such manner as to admit of inspection. Goods sent in execution of an order, however small the quantity may be, or articles sent by one private individual to another, not being actually trade patterns or samples, are not admissible as such.

UNITED STATES.—Patterns and samples of merchandise, posted for places in the United States, are subject to the special rate of 10 cents each, prepaid by postage stamp, and must not exceed 8 ounces in weight.

OFFICERS OF CANADIAN MANUFACTURERS' ASSOCIATION

President :

W. H. STOREY, Acton.

First Vice-President :

SAMUEL MAY, Toronto.

Second Vice-President :

B. ROSAMOND, Almonte.

Treasurer :

GEO. BOOTH, Toronto.

General Secretary :

FREDERIC NICHOLLS, (6 Wellington W.) Toronto.

Executive Committee :

R. W. Elliott, Toronto.
E. Gurney, Jr., Toronto.
James Watson, Hamilton.
Wm. Bell, Guelph.
Joseph Simpson, Toronto.
A. Warnock, Galt.
W. Millichamp, Toronto.
Frank J. Phillips, Toronto.
John Elliott, Almonte.
Wm. Christie, Toronto.
J. B. Armstrong, Guelph.
C. Raymond, Guelph.
W. F. Cowan, Oshawa.
J. S. Larke, Oshawa.
H. Heintzman, Toronto.
B. Rosamond, Almonte.
Geo. Pattinson, Preston.
Daniel Lamb, Toronto.
Isaac Waterman, London.
C. Shurley, Galt.
John Taylor, Toronto.
M. B. Perine, Doon.
Thomas McDonald, Toronto.
B. Greening, Hamilton.
Geo. W. Sadler, Montreal.
George Long, Berlin.
D. R. Wilkie, Toronto.
P. Freyseng, Toronto.
F. Crompton, Toronto.
Carl Zeidler, Toronto.
C. A. Birge, Dundas.

W. G. A. Hemming, Toronto.
W. K. McNaught, Toronto.
Charles Boeckh, Toronto.
J. R. Barber, Georgetown.
John Fensom, Toronto.
Robert Mitchell, Montreal.
H. N. Baird, Toronto.
H. Bickford, Dundas.
T. D. Craig, M.P.P., Port Hope.
Wm. Chaplin, St. Catharines.
H. E. Clarke, M.P.P., Toronto.
L. Cote, St. Hyacinthe.
W. H. Cross, Barrie.
E. J. Davis, King.
Thomas Cowan, Galt.
John Bertram, Dundas.
H. B. Warren, Toronto.
C. Wilson, Toronto.
W. H. Law, Peterboro'.
Jas. McKendry, Peterboro'.
P. W. Ellis, Toronto.
R. Crean, Toronto.
W. H. Perrand, Aurora.
J. F. Ellis, Toronto.
J. E. McGarvin, Acton.
R. T. Watson, Toronto.
C. D. Massey, Toronto.
A. E. Carpenter, Hamilton.
W. Stahlschmidt, Preston.
Chas. Pease, Toronto.

All Manufacturers are invited to become members of this Association.

Full particulars will be furnished on application to the Secretary.

— USE —

BROOKS' SPOOL COTTON

SPECIALLY FINISHED FOR SEWING
MACHINES

WM. KNABE & CO.

MANUFACTURERS OF

Grand, Upright & Square Pianos

WAREHOUSES:

NEW YORK—No. 112 FIFTH AVENUE, above Sixteenth St.

BALTIMORE—Nos. 22 AND 24 E. BALTIMORE ST., between Charles and St. Paul.

WASHINGTON—No. 817 PENNSYLVANIA AVENUE.

These Instruments, more than Fifty Years before the Public, have, by their excellence, attained an unpurchased pre-eminence, which establishes them the "UNEQUALLED" in TONE, TOUCH, WORKMANSHIP AND DURABILITY.

A fine selected stock of Canadian Pianos and Organs always in stock.

Ruse's Temple of Music - - - 68 King Street West

JOHN RUSSEL

55 JOHN ST.

= CARPENTER =

JOBGING OF ALL KINDS PROMPTLY ATTENDED TO.

OFFICE AND STORE FIXTURES A SPECIALTY.

The Canadian Manufacturer

THE INDUSTRIAL JOURNAL

- - OF THE DOMINION OF CANADA - -

Published by the

Canadian Manufacturer Pub. Co., Ltd., Toronto

SUBSCRIPTION PRICE, \$2 A YEAR

FREDERIC NICHOLS, Editor J. J. SASSIDY, Man. Editor ED. McCORRICK, Secretary

Office—6 WELLINGTON ST. WEST, TORONTO

CAB TARIFF

RATES OF FARE AUTHORIZED BY CITY ORDINANCE RELATIVE TO PUBLIC CARRIAGES, ETC., ETC.

Every Cabman, on each occasion when his cab is hired, when demanded, shall hand his card to the person employing him.

No fare is to be paid to any Cabman who refuses to hand his card to the person employing him, or who demands a greater rate than allowed by the following tariff.

THE CAB LIMITS

No. 1 Division will be composed of that portion of the city lying between Peter St. on the west, Sherbourne St. on the east, Carlton St. on the north, and the bay on the south.

No. 2 Division.—From Bathurst St. on the west, to Bloor St. on the north, and Sumach St. on the east.

No. 3 Division—Any point not included within the limits of the first and second Divisions.

TWO HORSE CABS

The fare by the hour will be, for two-horse cabs, one or four persons, \$1. Over four persons, 25 cents for each adult per hour.

From any one place in No. 1 Division to any other place in the same Division,—one person, 25 cents, and for each additional person, 25 cents.

For conveying one person from No. 1 Division to any place in No. 2 Division,—50 cents for one person, and 25 cents for each additional person.

For conveying one person from No. 1 Division to any place in No. 3 Division, 75 cents; for each additional person, 25 cents.

ONE HORSE CABS

For conveying one person from any one place within the limits of No. 1 Division to any other place within the limits of the same Division, 20 cents; for each additional person, 20 cents.

For conveying one person from any place in No. 1 Division to any place in No. 2 Division, 30 cents; for each additional person, 20 cents.

For conveying one person from No. 1 Division to any place in No. 3 Division, 50 cents; for each additional person 20 cents.

CHILDREN

No fare shall be charged for children under eight years in charge of an adult. Children over eight years and under 12 years charged half price; over that age, full fare.

NIGHT TARIFF

From the 1st May to the 31st October, inclusive, from 10 o'clock p.m. to midnight, the charge for cabs shall be one-half more than the above tariff, and after midnight to 6 o'clock a.m., double the above tariff; and from the 1st November to the 30th April, inclusive, from 6 o'clock p.m. to midnight, and after midnight to 6 o'clock a.m., the same additional charges.

BAGGAGE

One trunk and articles that may be placed inside the cab are to be carried free. For every other article placed on the outside of the cab, the cabman is entitled to five cents.

KLEINBURG MILLS

= FLOUR =

HOWLAND'S HIGH PATENT

AND

HOWLAND'S CHOICE

ROLLER = FLOUR

H. S. HOWLAND

TORONTO

CANADA

PRESIDENT
SIR ALEXANDER CAMPBELL, K.C.M.G.
LICUT. GOVERNOR OF ONTARIO

Vice-Pres.
JOHN L. BLANKIE, ESQ.
TORONTO

THE BOILER INSPECTION
AND INSURANCE COMPANY
OF CANADA

CONSULTING ENGINEERS and
SOLICITORS OF PATENTS

HEAD OFFICE, Quebec Bank Chambers, TORONTO

G. C. ROBB, CHIEF ENGINEER

A. FRASER, Sec'y-Treas.

FOREIGN CONSULS

- United States.*—P. W. Wagner, Consul, 106 Bay Street W.
France.—W. J. Macdonnell, Consul, 34 Church Street E.
Germany.—E. Heimrod, Consul, 54 Adelaide Street W.
Italy.—Enrico Bendelari, Consul, 50 Front Street E.
Netherlands.—B. Homer-Dixon, Consul; A. Nordheimer, Acting Consul.
Norway and Sweden.—J. S. McMurray, Vice-Consul, 18 King Street W.
Hawaiian.—George W. Shaw, Vice-Consul, 10 King Street E.
Argentine Republic.—Nicol Kingsmill, Consul, Wellington Street E. Frederic Nicholls, Vice-Consul, Permanent Exhibition.
Republic of Liberia.—Frederic Nicholls, Vice-Consul, Permanent Exhibition.
Brazil.—George Musson, Vice-Consul, 50 Front Street E.

NATIONAL SOCIETIES

- Caledonian Society.—Alexander Ross, Pres.
German Benevolent Society.—N. L. Steiner, Pres.
Irish Catholic Benevolent Association.—John J. McMahon, Pres.
Irish Protestant Benevolent Society.—John Baillie, Sec.
St. Andrew's Society.—A. J. Cattanach, Pres.
St. George's Society.—H. Symons, Pres.

LIBRARIES

- Normal School Library. St. James' Square. 5,000 volumes.
Osgoode Hall Library. Queen Street W. 20,000 volumes.
Parliament Library. Parliament Buildings. 25,000 volumes.
Public Library. Church Street E. 42,000 volumes.
Canadian Institute. Richmond Street E.
University Library.

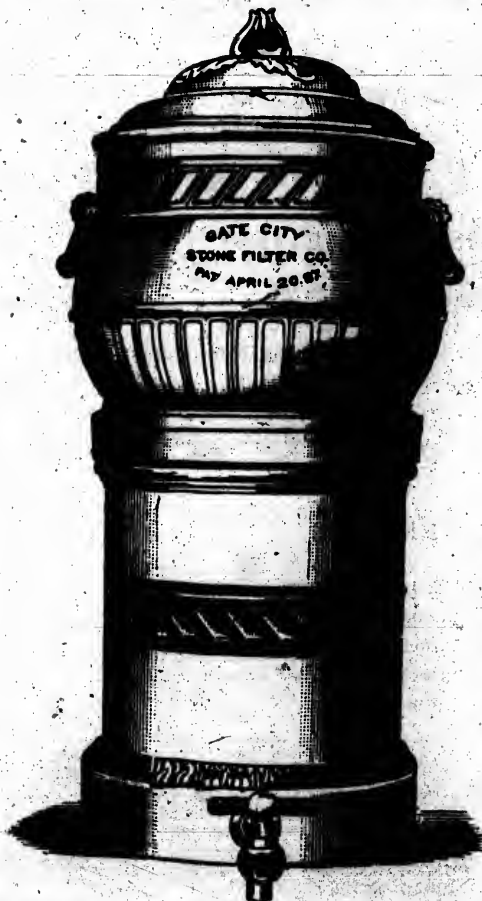


MICKLETHWAITE'S
PHOTOGRAPH • GALLERY

40 JARVIS ST. TORONTO, OPPOSITE ST. LAWRENCE MARKET

CABINET PHOTOGRAPHS from \$2.00 to \$4.00 per Doz.

SPECIALTIES—Out-Door Views, Photo Engraving, Photographing on Zinc, Commercial Photography, Life-Size Gelatino-Bromide Enlargement, Photographing on Wood for Engravers.



GATE CITY
Stone Filter Co.

HARD BURNT

BROWN STONE

WATER FILTERS

\$4 TO \$20
ACCORDING TO SIZE

These Filters last a life-time. No parts to fix or change. As easily cleaned as an ordinary water pail. No metal used. All common metals generate poison when in contact with water. No charcoal, sand or other compound used. They all absorb, retain, and become foul with living organisms. Charcoal, either animal or vegetable, has no chemical effect on water. The heavy rains and melting of snow and ice render the filtering of the water you drink a necessity at all times.

Address PERMANENT EXHIBITION OF MANUFACTURES, 63-69 Front St. W.

NICHOLLS & HOWLAND

THE BOARD OF TRADE

OF THE CITY OF TORONTO

LIST OF OFFICERS FOR 1888.

PRESIDENT:

W. D. MATTHEWS, JR.

1ST VICE-PRESIDENT:

D. R. WILKIE.

2ND VICE-PRESIDENT:

J. I. DAVIDSON

TREASURER:

GEO. MACLEAN ROSE.

SECRETARY:

EDGAR A. WILLS.

COUNCIL:

HON. JOHN MACDONALD.

WM. CHRISTIE.

W. R. BROCK.

W. INCE.

HENRY W. DARLING.

ELIAS ROGERS.

E. GURNEY.

HUGH BLAIN.

H. N. BAIRD.

W. B. HAMILTON.

R. W. ELLIOTT.

ROBERT JAFFRAY.

A. M. SMITH.

A. B. LEE.

S. F. MCKINNON.

BOARD OF ARBITRATION:

W. D. MATTHEWS, JR.

ELIAS ROGERS.

E. GURNEY.

W. GALBRAITH.

G. M. ROSE.

JOHN EARLS.

J. D. LAIDLAW.

B. CUMBERLAND.

J. H. G. HAGERTY.

THOS. FLYNN.

J. L. SPINK.

R. S. BAIRD.

REPRESENTATIVES ON HARBOR COMMISSION:

A. M. SMITH.

G. A. CHAPMAN.

REPRESENTATIVES ON INDUSTRIAL EXHIBITION ASSOCIATION:

W. B. HAMILTON.

J. D. LAIDLAW.

H. W. NELSON.

OFFICES OF THE BOARD:

IMPERIAL BANK BUILDINGS, WELLINGTON STREET EAST.

Present Membership, 915. Entrance Fee, \$100.

DIRECTORY OF EXHIBITORS

The following firms are represented in the Permanent Exhibition. Their manufactures have a deservedly high reputation, and are commended to the notice of intending purchasers of any of the respective lines in the following list. Prices, terms, discounts, etc., may be obtained from the several firms direct, or from Messrs. Nicholls & Howland, Permanent Exhibition of Manufactures.

ARMSTRONG, J. A. & CO., GUELPH, ONT., Carpets.

AUTOMATIC REFRIGERATOR CO., OTTAWA, ONT., Hanrahan's
Patent Automatic Refrigerators.

BAINES, GEO. W., MONTREAL, National Water Purifier.

BARNUM, THE, WIRE AND IRON WORKS, WINDSOR, ONT., Wire
Goods of all descriptions, Railing, Cresting, Fencing, etc., etc.

BARBER & ELLIS CO, THE, TORONTO, ONT., Manufacturing and
Wholesale Stationers, Account Books, Office Sundries, etc.

BATTEN, JOHN, PITTSBURG, PA., Automatic Fire Escape.

BEATTY, WM., & SONS, WELLAND, ONT., Centrifugal Pumps and
Contractors' Machinery.

BERTRAM, JOHN & SONS, DUNDAS, ONT., Iron and Wood Working
Machinery.

BLAKE, GEO. F., MANUFACTURING CO., BOSTON, MASS., Steam
Power Pumping Machinery.

BOECKH, CHAS. & SONS, TORONTO, ONT., Brooms, Brushes, Wood-
enware, etc., etc.

BOSTWICK, GEO. F., TORONTO, Amberg's Cabinet Letter Files.

BRUSH, GEORGE, EAGLE FOUNDRY, MONTREAL, P. Q., Blake Stone
Crusher.

CANADA SCREW CO., HAMILTON, ONT., Wood Screws, Set Screws,
Bolts, etc.

CANADIAN HARNESS CO., TORONTO, ONT., Harness and Saddlery.

CHING, J. LIONEL & CO., SYDNEY, N. S. W.; "Dugong" Oil and
Ointment, and "Dugong" Ivory Tusks and Hide.

CLARE BROS. & CO., PRESTON, ONT., Stoves and Furnaces.

COTE, LOUIS & BRO., St. HYACINTHE, P. Q., Boots and Shoes.

CORTLAND DESK CO., CORTLAND, N. Y., "Economy" Wall Desks.
 COWAN & CO., GAITHERSBURG, ONT., Wood Working Machinery, Engines and Boilers.
 CREELMAN BROS., GEORGETOWN, ONT., World's Star Knitting Machinery.
 CROMPTON CORSET CO., TORONTO AND BERLIN, ONT., Corsets.
 DALLEY, F. F. & CO., HAMILTON, ONT., Extracts, Essences, Blacking and Grocers' Sundries.
 DOMINION BARB WIRE CO., MONTREAL, Barb Wire.
 DOMINION SHOW CASE CO., TORONTO, ONT., Show Cases.
 DOMINION STARCH WORKS, WALKERVILLE, Corn Starch and Laundry Starch.
 DONALD PRODUCE CO., NORWICH, ONT., Evaporated Fruits.
 DOTY ENGINE CO., TORONTO, ONT., Engines, Boilers, etc.
 DOVERCOURT TWINE MILLS, TORONTO, Twines and Cordage.
 DUPEROW BROS. & CO., TORONTO, ONT., Varnishes, Japans, etc.
 ELLIOT & CO., TORONTO, ONT., Manufacturing and Wholesale Chemists and Druggists.
 ELLIS & KEIGHLEY, TORONTO, Coffee and Spices.
 ELLIS, P. W. & CO., TORONTO, Manufacturing Jewellers.
 EUREKA CHAIR CO., WORCESTER, MASS., Physician's Operating Chair.
 FENWICK & SCLATER, MONTREAL, QUE., Files and Mill Supplies.
 FINCH, W. S., TORONTO, Wood Filler and Preserver.
 GARDNER, W. R., MONTREAL, Hammers of every description.
 GATE CITY STONE FILTER CO., NEW YORK, U. S., Water Filters.
 GILLET, E. W., TORONTO AND CHICAGO, Yeast and Baking Powder.
 GILLIES, JOHN & CO., CARLETON PLACE, ONT., Coal Oil Engines.
 GLOBE TOBACCO CO., WINDSOR, ONT., AND DETROIT, MICH., Tobaccos.
 GOODHUE & CO., DANVILLE, QUE., Leather Belting and Lace Leather.
 GRAND & TOY, TORONTO, ONT., Tucker Automatic Letter and Document Files.
 GRAND RIVER KNITTING MILLS CO., PARIS, ONT., Smyrna Rugs and Knit Goods.
 GRAPE SUGAR REFINING CO., WALKERVILLE, ONT., Syrups and Glucose.

GRAY, WM. & SONS, CHATHAM, ONT., Carriages and Sleighs.
GURNEY, THE E. & C., CO., (LTD.), HAMILTON AND TORONTO,
Gravity Springless Locks and Rotating Door Knob Furniture.
GURNEY & WARE SCALE CO., HAMILTON, ONT., Platform and
Counter Scales.
HAMILTON INDUSTRIAL WORKS CO., HAMILTON, ONT., Wringers
Mangles, etc.
HAMILTON WHIP CO., HAMILTON, Whips of all kinds.
HART EMERY WHEEL CO., HAMILTON, ONT., Emery Wheels and
Emery Wheel Machinery.
HAY, PETER, GALT, ONT., Machine Knives.
HEARLE, J. G. MONTREAL, QUE., Toilet Soap and Perfumery.
HERMAN, J. W., TORONTO, Boiler Water Purifier.
HOWLAND, H. S., SONS & CO., TORONTO, ONT., Hardware Specialties.
HOWLAND, H. S., KLEINBURG, ONT., Flour.
HEMMING BROS., TORONTO, ONT., Fancy Plush Goods and Jewellers'
Cases.
HUDSON BROS., (LTD.), SYDNEY, N. S. W., Australian Timber and
Cabinet Woods.
IVES, H. R. & CO., MONTREAL, P. Q., Fencing, Cresting, Stoves and
Hardware Novelties.
JARDINE, A. & CO., TORONTO, Coffee, Spices, and Pure Gold Baking
Powder.
JENKINS & CO., TORONTO, Bedding and Trunks.
KEER, MAJ.-GEN., TORONTO, Himalayan Teas.
KERR BROS., WALKERVILLE, ONT., Water, Steam and Gas Valves of
Improved Pattern.
KING, R. W. & Co., GEORGETOWN, ONT., Power Knitting Machinery.
LESLIE, JAMES, MONTREAL, QUE., Woollen and Cotton Mill Supplies.
McCASKILL, D. A. & CO., MONTREAL, QUE., Varnishes and Japans.
McLAREN, THE J. C., BELTING CO., MONTREAL, Mill Supplies.
MERIDEN BRITANNIA CO., HAMILTON, Silver-Plated Ware.
MILLER BROS. & MITCHELL, MONTREAL, QUE., Beaudry's Steam
Power Hammer.
MONTGOMERY, L. B., TORONTO, Mill Supplies, Asbestos, etc.

MORRIS, A. W. & BRO., MONTREAL, QUE., Cordage and Binder Twine.
MORRISON, JAMES, TORONTO, Steam Fitters' and Plumbers' Supplies.
NORTH, WM. & SONS, LEEDS, ENGLAND, Teasels.
NORTHEY & CO., TORONTO, ONT., Steam Pumping Machinery.
NORTHUMBERLAND PAPER CO., CAMPBELLFORD, ONT., Straw
Board and Tarr'd Paper.
ONTARIO BOLT CO., TORONTO, ONT., Bolts, Nuts, Spikes, etc.
OSHAWA STOVE CO., OSHAWA, ONT., Cooking and Heating Stoves.
PERRIAH, N., PARKDALE, East Indian Specialties.
PILLOW, HERSEY & CO., MONTREAL, QUE., (Geo. A. MacAgy,
Western representative), Nails, Tacks, Bolts, etc.
POLIWKA, EMIL, MONTREAL, Sapolio and Bronze-for-all.
PUGH, FRANK, TORONTO, Brass Goods.
RAMSAY & SON, MONTREAL, QUE., Plate and Stained Glass, Paints,
Oils, etc.
ROBIN & SADLER, MONTREAL, QUE., and TORONTO, ONT., Leather
Belting and Lace Leather.
SHURLEY & DIETRICH, GALT, ONT., Every Description of Saws.
SIMPSON & CO., BERLIN, ONT., Furniture.
SLIGHT, H, TORONTO, Flowering Plants, Shrubs, etc.
SMITH, R. H. & CO., ST. CATHARINES, ONT., every description of Saws.
STAHLSCHMIDT & CO., PRESTON, ONT., Office Desks, Chairs, School
Furniture, etc.
ST. THOMAS FEATHERBONE CO., ST. THOMAS, ONT., Featherbone
Corsets, Whips, etc.
STRICKLAND, GEO. A., LAKEFIELD, ONT., Patent Cutter.
TAYLOR, J. & J., TORONTO, Fire and Burglar Proof Safes.
TEES & CO., MONTREAL, Office Desks, Revolving Book Cases, etc.
TELLIER, ROTHWELL & CO., MONTREAL, Stove Polish, Washing
Blue; etc.
TORONTO LEAD & COLOR CO., TORONTO, Prepared Paints, White
Lead, etc.
TORONTO NOVELTY MFG. CO., TORONTO, Ironing Board.
TORONTO RUBBER CO., TORONTO, Belting, Fire Hose, etc.
UNION PUBLISHING CO., INGERSOLL, ONT., County Directories.
WATTS, A. & CO., BRANTFORD, ONT., Household Soaps.

The Permanent Exhibition of Manufactures AND Commercial Exchange

ITS OBJECT - ITS FACILITIES - ITS ADVANTAGES

Before proceeding farther we invite your attention to the following:

Under the pressure of keen competition, economy in the manufacture of goods has been a constant source of study, and in most establishments every avenue of waste has been closed, and every perfected method of production has been adopted.

It is far different with the *distribution of goods*, and it is the very necessary economy in this direction that we have in view, as it matters not how cheaply goods may be manufactured if the expense of selling them is so great as to swallow up most of the margin of estimated profit. Many outside firms now have, and many more are finding out the necessity of having, a branch office in this city.

In many cases such offices are located on a side street, and are visited only by those who go there purposely on business bent. In maintaining such offices expense has to be incurred for salaries, rent, light, heat, care-taking, telephone, etc., etc., and no matter how the expense of each item is curtailed, the annual cost is bound to be a large one.

It is our object to afford a practical arrangement whereby this unavoidable expenditure may be *largely* reduced, while at the same time, the benefits sought to be attained will be very much greater. For a moderate rental we offer every advantage of a private branch office, with the additional advantage of being represented in a head centre or "commercial exchange," where an exhibitor's goods will be seen by thousands of business men throughout the year. To an appreciative extent it will change the existing order of things, as in many instances the customer will visit the agent instead of the agent having to hunt up the customer.

The Permanent Exhibition will be open, free to the public, every week-day.

Extensive advertising will keep the Exhibition and its advantages fresh in the minds of the people.

Every effort will be made to furnish attractions, which will ensure the entertainment and interest of the public.

Our building is situated in the centre of the business part of the City of Toronto. It is easy of access from all Hotels, Railway Stations and Steamboat Landings—in fact it is on the highway to all these places.

Every facility for the transaction of business will be provided in the building, such as telephone connection, telegraph and ticket office, postage stamp and news stand, private offices, reading room, etc., in order that all dispatch may be ensured.

Lavatory accommodation and sanitary conveniences are provided for the use of exhibitors and their agents.

Our storage facilities are unsurpassed, and the receiving and shipping of goods will receive prompt and careful attention.

Exhibitors may either appoint us selling agents or have their own representatives on the spot.

Power and shafting will be provided for exhibitors who may wish to show machinery in operation.

Instructed attendants will be in charge, for the purpose of explaining the merits of each exhibit to interested visitors.

Exhibitors can have printed on their office stationery, "When in Toronto call and see samples of our goods at the Permanent Exhibition of Manufactures." This may afford prospective purchasers an opportunity of personally inspecting goods, who might not otherwise visit outside towns for that purpose.

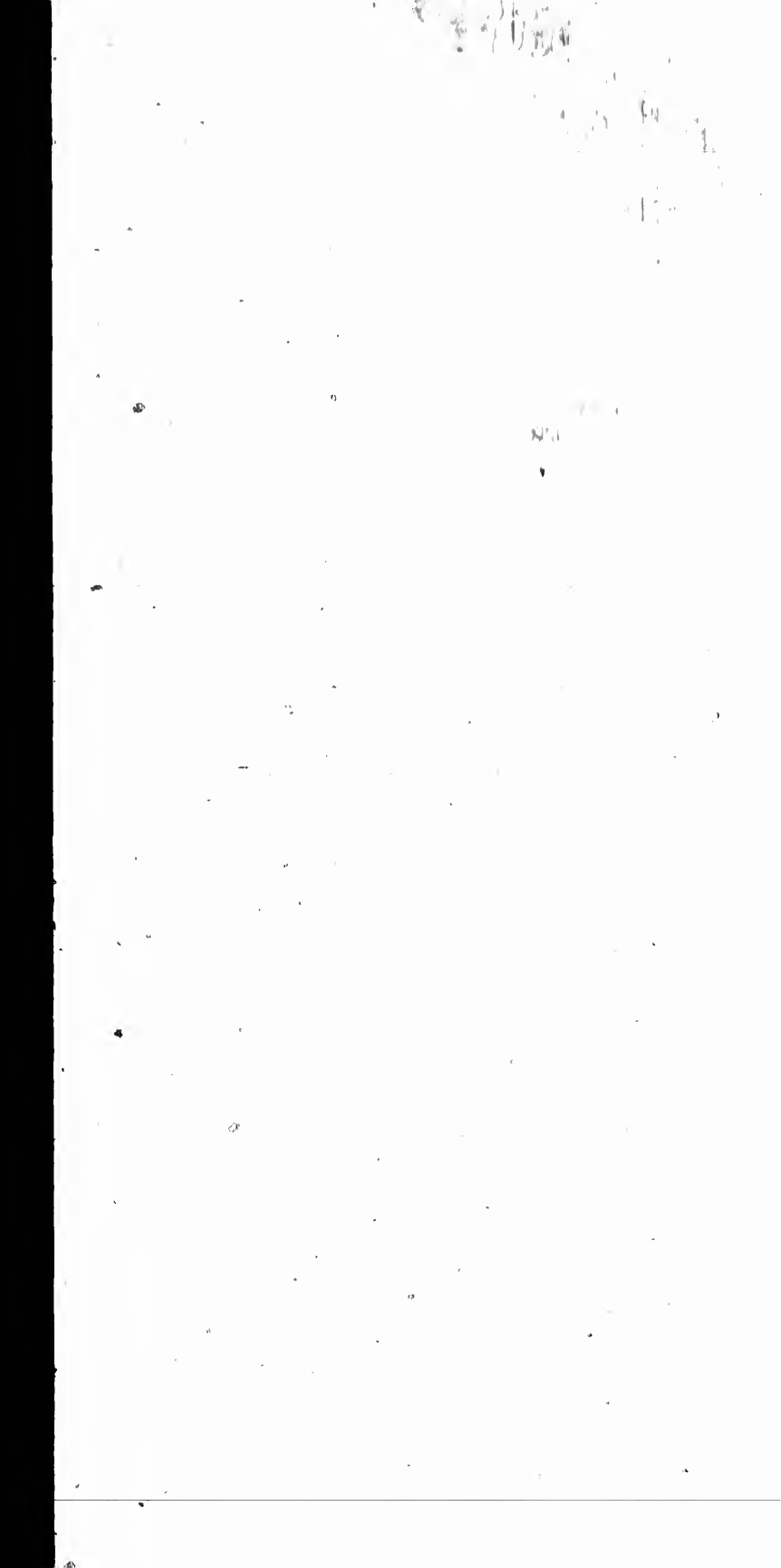
Exhibits will be seen by large numbers of business men who would not be apt to visit a private office unless on special business.

It is designed to supply the long felt want of a central exchange, wherein goods can be kept on show for the inspection of the thousands who come up month after month to this commercial metropolis.

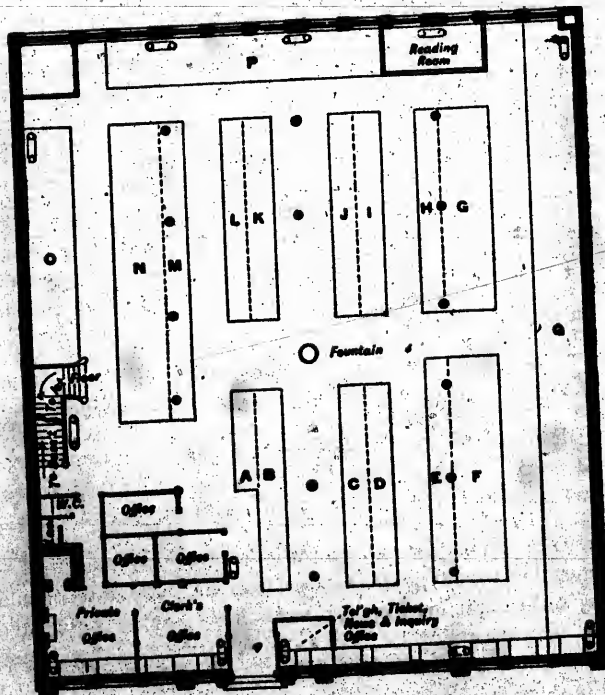
It is also in contemplation to provide, for the convenience of outside manufacturers and for city merchants and brokers, suitable accommodation for meeting and transacting business, and which may be designated as a "CHAMBER OF COMMERCE," or "TRADE EXCHANGE." For example, a manufacturer whose works are located in an outside town, but who makes periodical business trips to Toronto, can advertise on his office stationery that either himself or representative may always be found, between stated hours on certain days, at the Permanent Exhibition. Other particulars, such as ACCOMMODATION FOR TRADE SALES, ETC., will be made public at a later date.

Yours truly,

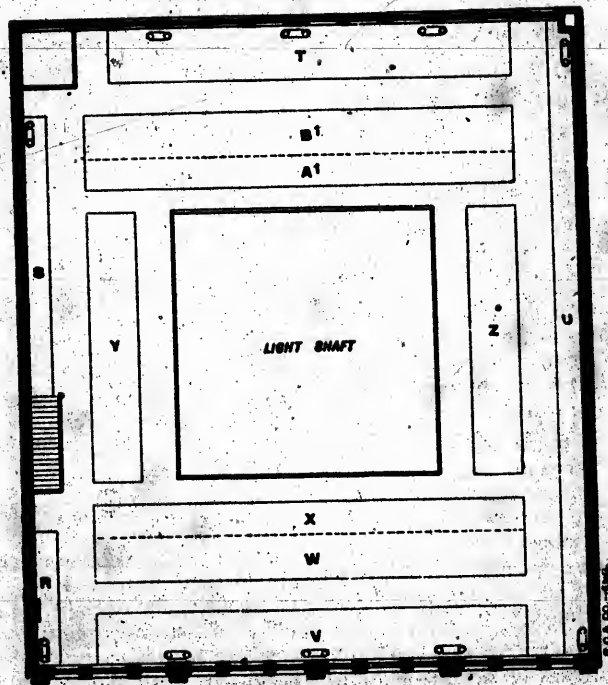
NICHOLLS & HOWLAND.



PLAN OF MAIN FLOOR PERMANENT EXHIBITION BUILDING



PLAN OF GALLERY FLOOR
PERMANENT EXHIBITION BUILDING



MESSRS. NICHOLLS & HOWLAND,
Toronto.

GENTLEMEN :

I N reply to your request as to what I think of the advantages of a Permanent Exhibition, I have pleasure in stating that I think it will supply a great need in the city, and will result in making it more a centre of trade than it is to-day.

We want Toronto to be a place where, so far as it is possible, everybody will be induced to come, because of a reasonable certainty of finding everything he may want that is worth having. Wishing you every success.

Sincerely yours,

W. H. HOWLAND,
Mayor of the City of Toronto.

o o o o

Federal Bank; Toronto.

MESSRS. NICHOLLS & HOWLAND,
Toronto.

DEAR SIRs :

I AM much pleased to learn that you are erecting a suitable building in Toronto, with machinery attachment, for the permanent exhibition of Canadian manufactures.

I think Canadian industries of nearly all kinds are passing from the incipient and uncertain stage to durable and profitable growth, and a well managed "sales and display" centre, such as you contemplate, would be a considerable and an interesting factor in creating business.

I assume, of course, that you would exclude articles of uncertain utility, and the rooms would be filled with such new and staple goods, as would make them a centre of attraction to buyers and others interested in the success of Canadian manufactures.

Yours truly,

G. W. YARKER.

MESSRS. NICHOLLS & HOWLAND,
Toronto.

DEAR SIRs :

I HAVE much pleasure in congratulating you upon the energy and enterprise exhibited in the establishment of a Permanent Exhibition of Manufactures. The venture is one deserving of every encouragement, and will, I have no doubt, prove of the greatest service to the manufacturing interests of the Dominion.

I would be glad to see the best of feeling exist between yourselves and the Industrial Exhibition Association; there should be no rivalry except such as conduces to the advancement of both, and your mutual welfare. Wishing you every success.

Yours truly,

D. R. WILKIE,
Cashier, Imperial Bank, Toronto.

o o o o

MESSRS. NICHOLLS & HOWLAND,
Toronto.

GENTLEMEN :

WE are in receipt of yours of the 12th inst., which, owing to a pressure of business, has not been answered sooner.

We consider your Permanent Exhibition of Manufactures will be of great benefit to many people, and, we trust, remunerative to yourselves. There is, no doubt, a fine opening for an Exhibition of that description in the city, and, should you secure the necessary patronage, it will, no doubt, prove a very great advantage to the exhibitors and the public in general. Wishing you success,

Yours truly,

H. A. MASSEY,
President, Massey Manufacturing Co.
Toronto.

MESSRS. NICHOLLS & HOWLAND,
Toronto.

DEAR SIRs:

I THINK the Permanent Exhibition will result in extending the business connections of those who may secure space in the building.

It should be a benefit to the city, because of its centralizing influence; to the exhibitor, because of the opportunity it affords him of placing his goods before the general public; and to the general public because of the facilities offered for inspecting a varied range of manufactures under one and the same roof.

Yours truly,

(Alderman) E. GALLEY,
Vice-President, Land Security Co.,
Toronto.

MESSRS. NICHOLLS & HOWLAND,
Toronto.

GENTLEMEN:

REFERRING to your project for establishing a Permanent Exhibition and Sales-rooms for Manufactures, would say that it has my entire approval.

It cannot fail to be a great benefit (especially to those in outside localities) to have so central and accessible a site as the one you have secured, where actual goods may be seen, and full information given.

Yours truly,

R. W. ELLIOTT.

Ex-President, Canadian Manufacturers' Ass'n.

o o o o

MESSRS. NICHOLLS & HOWLAND,
Toronto.

DEAR SIRs:

IN reply to yours of 11th inst., I think the idea of a Permanent Exhibition of Manufactures in Toronto a good one, both for the city and for the manufacturers and merchants.

Profits are so small now-a-days that anything which tends to lessen the cost of handling goods must be a benefit to all concerned.

Yours truly,

WM. GRINDLAY,

Manager, Bank of British North America, Toronto.



OFFICERS OF INDUSTRIAL EXHIBITION ASSOCIATION, 1887

PATRONS

HIS EXCELLENCY THE GOVERNOR-GENERAL
HON. JOHN CARLING, MINISTER OF AGRICULTURE

OFFICERS FOR 1887

PRESIDENT
FIRST VICE-PRESIDENT
SECOND VICE-PRESIDENT
VETERINARY SURGEON
TREASURER
SOLICITOR
MANAGER AND SECRETARY
ASSISTANT SECRETARY
ARCHITECT
GENERAL SUPERINTENDENT
AUDITORS

JOHN J. WITHROW, Esq.
CAPT. W. F. McMASTER
WILLIAM RENNIE, Esq.
ANDREW SMITH, Esq.
JAMES MCGEE, Esq.
G. W. McWILLIAMS, Esq.
MR. H. J. HILL, Toronto
MR. A. E. MACKAY
MR. MARK HALL, Toronto
MR. J. L. SKIRROW, Toronto
MR. WM. ANDERSON
MR. W. F. DAVISON

BOARD OF DIRECTORS

MR. J. J. WITHROW
" W. F. McMASTER
" A. SMITH
" W. CHRISTIE
" W. RENNIE
" W. B. HAMILTON
" W. S. LEE
" JAS. CROCKER

MR. GEO. LESLIE, JR.
" B. SAUNDERS
" R. DAVIES
" E. G. CLOSE
" J. E. MITCHELL
ALD. E. W. BARTON
MR. GEORGE VAIR
" D. C. RIDOUT

MR. GEO. BOOTH
COL. J. GRAY
MR. R. W. ELLIOTT
" N. C. LOVE

ALD. J. B. BOUSTEAD
MR. W. H. DOEL
" J. H. PEARCE

HONORARY DIRECTORS

F. C. DENISON, Esq., M.P.
JOHN SMALL, Esq., M.P.
G. R. R. COCKBURN, Esq., M.P.
THOS. COWAN, Esq., President, Canadian
Manufacturers' Association.

N. CLARKE WALLACE, Esq., M.P.
HON. ALEX. MACKENZIE, M.P.
WM. MULOCK, Esq., M.P.
FREDERIC NICHOLLS, Esq., Secretary,
Canadian Manufacturers' Association.

SPECIAL COMMITTEES

GROUNDS.—Ald. W. E. Barton (Chairman), Ald. Jones, Ald. Hill, Ald. Maughan,
Col. Gray, Ald. Wickett, and Mr. J. Crocker.

RECEPTION AND TRANSPORTATION.—Messrs. B. Saunders (Chairman), His Wor-
ship the Mayor of Toronto, J. J. Withrow, W. F. McMaster, Ald. John Harvie, Ald.
Boustead, Ald. Morrison, Messrs. S. B. Harman, R. W. Elliott, Hugh Blain, W. J. H.
Lowe, Warring Kennedy, W. S. Lee, D. Lamb and W. B. Hamilton.

FINANCE.—Messrs. W. B. Hamilton (Chairman), W. S. Lee, W. Christie, D. C.
Ridout and R. W. Elliott.

SPECIAL ATTRACTIONS.—Messrs. D. C. Ridout (Chairman), W. B. Hamilton,
George Booth, J. J. Withrow, J. E. Mitchell, Ald. Barton and C. Saunders.

TORONTO FIRE ALARM SIGNAL BOXES

No.		No.	
4	Cor. Front and Church	92	Cor. St. Albans and St. Vincent
5	" Front and Yonge	93	" Yonge and Wellesley
6	" Bay and Esplanade	94	" Caer and North
7	" Front and York	95	" Yonge and Isabella
8	Parliament Buildings	123	" Yonge and Bloor
9	Cor. Simcoe and Esplanade	124	Yonge, opp. St. Paul's Hall
12	" King and Bay	125	Bloor, opp. St. Paul's Church
13	" King and York	126	Cor. Cumberland and Belair
14	" King and John	127	" Scotland and Hazelton Ave.
15	" King and Brock	128	" Avenue Road and Bloor
16	" King and Bathurst	132	" Avenue Road and Elgin Ave.
17	" Front and Bathurst	184	" Davenport Road and Belmont
18	" Front and Brock	135	" Yonge and Belmont
19	" Front and John	136	" Yonge and Cottingham
21	" King and Yonge	137	" Rosedale and Woodland Ave.
23	" King and Church	142	" St. Patrick and Spadina
24	" King and Jarvis	143	" College and Spadina
25	" Esplanade and West Market	145	" Brunswick and Harbord
26	" Front and Frederick	146	" Bathurst and College
27	Christie, Brown & Co's Factory	147	" College and Clifton
28	Cor. King and Sherbourne	152	" Denison Ave. and High
29	" King and Berkeley	153	" St. Patrick and Bathurst
31	" Yonge and Adelaide	154	" Denison Ave. and Cambridge
32	" Yonge and Queen	156	" Escliff Ave. and Arthur
34	" Yonge and Shuter	157	" Dundas and Ossington Ave.
35	" Bond and Wilton Ave.	162	" Queen and Dundas
36	" Yonge and Gould	163	" Queen and Lisgar
37	" Yonge and McGill	164	" Dufferin and Florence
38	" Yonge and Wood	165	" Dundas and Brock Ave.
41	" Queen and Elizabeth	167	" Dovercourt & St. Ann's Road
42	" Queen and Simcoe	172	" King and Stafford
43	" Queen and Beverley	173	Central Prison
45	" Queen and Brock	174	Bridge Manufacturing Co.
46	" Queen and Portland	175	Mercer Asylum
47	" Queen and Bathurst	176	Exhibition Buildings
48	" Queen and Claremont	212	Cor. Berkeley and Esplanade
51	" Queen and Church	213	Gooderham & Worts' Distillery
52	" Queen and Jarvis	214	Cor. Front and Trinity
53	" Queen and Sherbourne	215	" Front and Beachall
54	" Jarvis and Wilton Ave.	216	" King and Sumach
56	" Gerrard and Church	217	" Queen and River
57	" Gerrard and Sherbourne	231	House of Providence
61	" Jarvis and Carlton	234	Cor. Parliament and Queen
62	" Jarvis and Wellesley	235	" Sydenham and Ontario
63	" Sherbourne and Wellesley	236	" Seaton and Wilton Ave.
64	" Sherbourne and Isabella	237	" Parliament and Oak
65	" Charles and Jarvis	241	" Parliament and Carlton
67	" Charles and Church	243	" Parliament and Amelia
71	" Bay and Richmond	245	" Winchester and Sackville
72	" Louisa and Teranlay	246	Lamb's Factory and Amelia
73	" Agnes and Elizabeth	247	Cor. Gerrard and River
74	" Teranlay and Hayter	251	" Gerrard and Sackville
75	Hospital for Sick Children	253	" Sumach and Wilton Ave.
76	Cor. Christopher and Chestnut	254	" Queen and Broadview Ave.
81	" Simcoe and Caer Howell	256	" Queen and G. T. R. Crossing
82	" Beverley and D'Ancv	261	Gooderham's Cattle Sheds
83	" Beverley and College	263	Cor. Broadview Ave. and Gerrard
84	" Harbord and Huron	264	" De Grassi and Grover
85	" Bloor and Walmer Road	265	" Queen and Pape Ave.
91	" Grosvenor and St. Vincent	271	" Queen and Leslie

TRAVELLER'S GUIDE

POPULATION, DISTANCE AND FARE

FROM TORONTO TO

	Pop.	Miles.	Fare. \$ c.		Pop.	Miles.	Fare. \$ c.
Arnprior.....	2500	277	9 25	Petrolia.....	5000	162	4 90
Aurora.....	2000	30	90	Port Hope.....	5588	63	2 10
Barrie.....	5000	64	1 95	Prescott.....	3000	221	7 30
Beaverton.....	1000	73	2 15	Quebec.....	62447	505	15 45
Belleville.....	10076	113	3 75	St. Catharines.....	9500	72	2 15
Berlin.....	5000	62	1 95	St. John, N.B.....	30000	1093	21 50
Bowmanville.....	3650	43	1 45	St. Marys.....	3600	98	3 10
Bradford.....	1500	41	1 25	St. Thomas.....	11000	131	3 65
Brampton.....	3500	21	65	Sarnia.....	5318	163	5 00
Brantford.....	12000	70	1;95	Seafort.....	2600	111	3 45
Brockville.....	10000	208	6 95	Simcoe.....	3000	82	2 75
Chatham.....	8500	179	5 30	Stratford.....	9000	88	2 75
Clinton.....	2900	118	3 70	Strathroy.....	4000	130	4 00
Cobourg.....	5000	69	2 35	Thorold.....	2700	83	2 25
Collingwood.....	5300	94	2 85	Trenton.....	3900	101	3 35
Corwall.....	7000	266	8 85	Uxbridge.....	2300	41	1 25
Elora.....	1500	98	1 90	Walkerton.....	2800	155	3 50
Exeter.....	1937	146	3 95	Welland.....	2600	88	2 55
Fergus.....	1900	101	1 90	Whitby.....	4000	80	1 00
Galt.....	6006	76	1 75	Windsor.....	7000	225	6 75
Gananoque.....	3000	178	6 20	Woodstock.....	6500	97	2 60
Georgetown.....	1700	29	90	Winnipeg.....	22000	1370	43 90
Goderich.....	4072	138	4 05				
Gravenhurst.....	2100	113	3 50	Albany.....	90,758	409	8 75
Guelph.....	11000	48	1 50	Baltimore.....	332,313	513	12 60
Hamilton.....	41280	40	1 20	Boston.....	362,839	610	13 25
Harriston.....	2000	92	2 85	Brooklyn.....	566,663	529	11 85
Halifax.....	36054	1191	28 00	Buffalo.....	155,134	107	3 15
Ingersoll.....	4500	107	2 90	Chicago.....	603,185	518	14 00
Kincardine.....	3000	160	4 65	Cincinnati.....	255,139	495	14 50
Kingston.....	17000	161	5 40	Cleveland.....	160,146	290	8 15
Lindsay.....	5540	75	2 05	Denver.....	35,629	1644	45 00
Listowel.....	3000	116	2 95	Detroit.....	116,340	225	6 75
London.....	28000	116	3 40	Jersey City.....	120,722	528	11 85
Meaford.....	2300	115	3 50	Kansas City.....	55,785	998	26 50
Mitchell.....	2500	98	3 10	Louisville.....	123,758	623	17 50
Montreal.....	160000	333	11 10	Milwaukee.....	115,587	594	16 55
Mount Forest.....	2500	87	2 65	Minneapolis.....	46,887	923	25 50
Napanee.....	4000	135	4 50	New Orleans.....	216,090	1424	31 85
Newmarket.....	2400	34	1 00	Newark.....	136,508	521	11 55
Orangeville.....	3500	49	1 50	New York.....	1,206,299	528	11 85
Orillia.....	4000	87	2 60	Philadelphia.....	847,170	612	11 85
Oshawa.....	4180	34	1 15	Pittsburg.....	156,389	230	9 15
Ottawa.....	32800	281	7 95	Providence.....	104,867	600	13 35
Owen Sound.....	5500	122	3 65	Rochester.....	80,366	159	4 15
Paisley.....	1100	169	3 95	San Francisco.....	233,959	3310	75 65
Paisley.....	3400	69	2 00	St. Louis.....	350,518	606	20 75
Pembroke.....	4000	330	10 85	St. Paul.....	41,473	918	25 50
Perth.....	4000	248	6 05	Washington.....	147,293	555	13 80
Peterboro.....	8000	94	2 40				
Toronto.....	130,000						

HOTEL GUIDE FOR DOMINION OF CANADA

PLACE	PROPRIETOR.	Rate per day	BUS, ETC.
Barrie	Queen's Hotel (new)	A. W. Brown	\$1 50 Free.
Belleville, Ont.	Dafoe House	Huffman & Balkwell	1 25 to 1 50
Belleville, Ont.	Queen's Hotel	Sibbitt & Co.	1 00
Berlin	Commercial Hotel	J. S. Weaver	Sample r'ms.
Bowmanville, Ont.	Alma Hotel	W. B. McGaw	1 00
Brampton	Queen's Hotel	M. Deady	2 00 Free.
Brantford	Kerby House	J. C. Palmer	1 00 Union.
Brantford	American Hotel	A. T. Cutler, Prop.	1 00
Brighton	Snider House	J. Cutler, Man.	1 00
Brighton, Ont.	Clarke House	Peter Snider	Free.
Brockville	Grand Central Hotel	R. G. Clarke	Free.
Brockville, Ont.	St. Lawrence Hall	R. Williams	1 00 15 Cents.
Caledonia, Ont.	Union Hotel	Amos Robinson	1 00
Centreville, Ont.	Centreville House	E. T. Hind	Sample room
Chatham, Ont.	Garner House	Thos. Lavaque	1 50
Clinton, Ont.	Commercial Hotel	S. Perrin	1 00
Cobourg	The Arlington	Jas. Moore	1 00
Cobourg, Ont.	Horton House	W. B. Chamblis	1 50 Free.
Cobourg, Ont.	Dunham Hotel	S. E. McCartney	1 50 Free.
Collingwood	Central Hotel	M. B. Williams	1 50 Free.
Collingwood	Globe Hotel	Thos. Collins	1 50 Free.
Colborne, Ont.	Globe Hotel	J. Rowland	1 00 Free.
Dunnville, Ont.	Mansion House	H. Hicks	1 50 Free.
Dunnville, Ont.	Royal Hotel	Mrs. Pigeon	1 50 Union.
Durham, Ont.	Middaugh House	Jas. Moss	1 00 Free.
Elora, Ont.	Commercial Hotel	H. J. Middaugh	1 to 1 50 Free.
Farmersville, Ont.	Gamble House	T. Biggar	1 to 1 50
Farnham	American House	R. H. Gamble	1 00 Free.
Galt, Ont.	Imperial Hotel	Louis Labonte	1 00 Union.
Galt	Queen's Hotel	A. F. Cutler	1 50 to 2 00 Union.
Gananoque	International Hotel	C. Lowell	2 00 to 3 00
Halifax, N.S.	Halfax Hotel	D. Brophy	1 00 Free.
Halifax, N.S.	Queen's Hotel	H. Heslein & Co.	1 00 Free.
Harrison, Ont.	Collison House	M. J. Sherston	1 00 Free.
Harrison, Ont.	Bingham's Royal Hotel	John Collison	1 00 Free.
Hespeler	Commercial Hotel	J. R. Bingham	1 00 Union.
Kingston	British American	O. T. Baker	1 50 Union.
Kingston	Windsor Hotel	Arch. McFaul	2 00 to 3 00 Union.
Kingston, Ont.	City Hotel	Martin O'Brien	1 00 to 1 50
Lennoxville, P.Q.	College House	Jas. Jackson	1 50
London	Grigg House	A. Colby & Son	1 50
London	Tecumseh House	Sam'l Grigg	1 00 Free.
Lucknow, Ont.	Whitely House	McGaw & Winnett	1 00 Free.
Marieville, P.Q.	Marieville Hotel	R. J. Whitely	1 00 Free.
Meaford	Paul's Hotel	G. Poulin	1 50 Free.
Moncton, N.B.	The Brunswick	Mrs. Pacel	1 50 to 2 00 Free.
Montreal	Richelieu Hotel	G. McSweeney & Co.	1 50 to 2 50
Montreal	Windsor	Geo. D. Fuchs, Man.	3 to 3 50 25 Cents.
Montreal	St. Lawrence Hall	I. B. Durocher	(a)
Montreal	Albion Hotel	H. Hogan	(1) 1 50
Montreal, P.Q.	Low's Hotel	Stearns & Murray	1 00
Montreal, P.Q.	Kingston House	N. Chaffee	1 50 to 2 00
Montreal, P.Q.	New York House	T. H. Waddell	1 50 to 2 00
Montreal, P.Q.	Hotel Notre Dame	D. A. Melvin	1 50
Montreal, P.Q.	Waverley House	H. Desjordy & Co.	1 00
Montreal, P.Q.	Sydenham Hotel	M. O'Reilly	1 00
Montreal, P.Q.	Roya Coffee House	Mrs. Boyd	6 tick 1 00
Montreal	Toronto Hotel	R. Brown	1 00
Montreal	Sportsmen's Retreat	Wm. J. Carney	1 50
Montreal	Western House	F. Chapman	1 50 Free.
Morrisburg, Ont.	St. Lawrence Hall	J. J. McGannon & Bro.	1 50 Free.
Mount Forest	Queen's Hotel	W. Roberts	1 50 Union.
Niagara	Queen's Royal	McGaw & Winnett	1 50 Union.
Newcastle, Ont.	Windsor Hotel	R. Bennett & Son	1 50 Union.

THE QUEEN'S HOTEL

TORONTO

Strictly First-Class in all its Appointments

Celebrated for its home comforts, perfect quiet, excellent attendance, and the peculiar excellence of its cuisine. It has been patronized by their Royal Highnesses Prince Leopold and the Princess Louise, the Marquis of Lorne, Lord and Lady Dufferin, the Marquis and Marchioness of Lansdowne, and the best families. Is most delightfully situated near the Bay on Front Street, and is one of the largest and most comfortable hotels in the Dominion of Canada.

McGAW & WINNETT, PROPRIETORS

OPPOSITE PERMANENT EXHIBITION OF MANUFACTURES

NEW-INVENTIONS DEPARTMENT

*

In connection with our Permanent Exhibition we have a Special Department for the Sale and Display of Patented Inventions.

NICHOLLS & HOWLAND

PERMANENT EXHIBITION OF MANUFACTURES

63, 65, 67, 69 Front Street West

TORONTO, CANADA

Correspondence invited.

HOTEL GUIDE—Continued

PLACE.	PROPRIATOR.	Rate per day	BUS, ETC.
Napanee	Brisco House	T. Empey & Sons	Sample r'ms.
Ogdensburg, N.Y.	DeLack House	Geo. DeLack	\$1 00 R. R. Sta.
Ottawa, Ont.	Windsor House	S. Daniels	2 00 25 Cents.
Ottawa	Russell House	I. A. Gouin	2 50 to 3 50
Ottawa	Royal Exchange Hotel	J. Johnson	Com. \$1 1 50
Ottawa	British Lion Hotel	H. Alexander	1 00
Ottawa	Dominion Hall	Geo. Simms	1 00
Ottawa	Wellington Hotel	Martin McDonald	
Ottawa	Argyle Hotel	Geo. Acres	
Ottawa	Occidental Hotel	M. Beauvais	1 00
Oshawa, Ont.	Central Hotel	Jas. Cochrane	1 to 1 50 Union.
Owen Sound	Coulson House	H. Crozier	1 50 Free.
Owen Sound	Queen's Hotel	Wm. Matthews	
Perth	Allan House	I. C. Grant	1 50
Pt. Levi, P. Q.	Montreal Hotel	G. McKibbin	1 00
Port Hope	Queen's Hotel	A. Adams	1 50 Free.
Pembroke	Copeland House	Thos. A. Mulligan	2 to 2 50
Prescott, Ont.	Daniels' Hotel	L. H. Daniels	
Prescott, Ont.	Bradley House	Mrs. J. Bradley	1 00 F'i-class.
Prescott, Ont.	Kyarr House	A. Ryan	1 to 1 50 Union.
Quebec	St. Louis Hotel	Willis Russell, Pres.	
Quebec	Mountain Hill House	E. Dion & Co.	(1) 2 00
Quebec	Henchey's Hotel	P. Henchey	1 50
Quebec, P.Q.	Blanchard's Hotel	Capt. N. Pelletier	1 to 1 50
Quebec, P.Q.	Albion Hotel	L. M. Blouin	1 50 to 2 50
Riviere du Loup	Larochelle Hotel	Edmond Taibot	1 to 2 50
Sackville, N.B.	Brunswick House	G. B. Estabrooks & Sons	
Seaforth	Commercial Hotel	John Campbell	1 50 Free.
Sherbrooke, P.Q.	Sherbrooke House	Cote & Meaghe	1 50 to 2 50
Simcoe, Ont.	Battersby House	John Dixon	
Sorel, P.Q.	The Brunswick	A. Beveau	
St. Catharines, Ont.	Welland House	Carroll & King	1, 1 50 & 2 Free.
St. Catharines, Ont.	International Hotel	P. W. Raymer	1 00 Union.
St. Hyacinthe, P.Q.	Hotel Yamaska	J. E. Perrault	
St. John's, P.Q.	St. John's Hotel	F. Monette	
St. John, N.B.	Hotel Dufferin	Fred. A. Jones	3 to 3 50
do.	Royal Hotel	Theo. T. Raymond	2 50 to 3
do.	Bangor House	R. Clark	1 to 1 50
do.	Ottawa Hotel	E. Cozman	1 25 to 1 75
do.	Brunswick Hotel	N. A. Parlee	1 50 to 2 00
do.	Queen's Hotel	J. Deckie	1 50 to 2 00
do.	Central Hotel	J. W. Roop	1 00 to 1 50
do.	Park Hotel	W. Conway	1 50 to 2 00
do.	Clifton House	A. N. Peters	
St. Thomas, Ont.	Hatchinson House	Alex. McBride	1 50 Union.
Statford	Commercial Hotel	T. Hagarty	1 to 2 00
Toronto	Queen's	McGaw & Winnett	
Toronto	Rossin House	Mark F. Irish	2 50 to 4
Toronto	Walker House	David Walker	2 00
Toronto	Windsor Hotel	B. White	1 to 1 50 Free.
Toronto	Revere House	J. J. Jamieson	1 to 1 50
Toronto	Shakespear Hotel	J. A. O'Grady	1 50 Union.
Toronto	Clarence Hotel	F. G. Richards, jr.	2 to 3 50 10 Cents.
Victoria, B.C.	Occidental Hotel	Joseph Bayley	1 to 1 50 Free.
Victoria, B.C.	Driard House	Redon & Hartnagel	
Victoria, B.C.	St. Nicholas Hotel	McCartney & Verner	1 to 1 50 Terms.
Victoria, B.C.	Windsor Hotel	Alex. McDonald	1 to 1 50 Free.
Victoria, B.C.	Brunswick Hotel	W. E. & Osterhout	1 to 1 50 Terms.
Waterford, Ont.	Commercial Hotel	H. F. Teeter	1 50 Terms.
Waterloo, Ont.	Beaman's Hotel	H. Zimmerman	
Waterloo, Ont.	Commercial Hotel	Jacob Seyler	
Welland, Ont.	Dexter House	E. Hoover	1 50 Free.
Whitby, Ont.	Ontario House	John Leslie	1 00 Union.
Windsor, Ont.	Great Western Hotel	G. W. Payne	1 to 1 50
Woodstock, Ont.	Commercial	John Forbes	1 to 1 50
Yarmouth, N.S.	Hotel Lorne	Ryan & Son	

Providence Steam Trap Co'y

(ESTABLISHED 1880)

MANUFACTURERS OF

Newton's Patent Steam Trap

FOR HIGH AND LOW PRESSURE

Received the Highest Award at the Novelties Exhibition of the Franklin Institute of Philadelphia, Pa., for Steam Traps, 1885.

R. NEWTON, Supt. & Treas., PROVIDENCE, R.I.

Warranted for One Year. 30 Days' Trial Given
Perfectly Automatic, and requires no Attention

This Trap is acknowledged by leading practical Engineers and Manufacturers to be the most simple, effective and durable Trap in the United States or Europe. It is perfectly free from the various troubles caused by expansion or contraction. No glands or stuffing boxes are required, and no compound cylinders or copper rods are used. The Trap repairs itself, needs no lubrication, and will last twenty years. The cover can be removed at any time and the working parts readily examined. When steam is turned off for the night, the cylinder sinks, and the apertures are ready for the passage of water when steam is turned on again. No valves have to be open to allow the escape of foul air, no pipes break, there is no delay on account of contraction or expansion, and the trap is always ready for its work. It is a perfect automatic steam trap, and does not require any lubrication or attention whatever.

At the higher pressure the trap acts even better than at the low pressure, but will work anywhere from one pound to one hundred and forty.

Manufacturers who are troubled with danger of water in the cylinders will find this trap valuable when attached to their main steam-pipe between the boiler and engine.

DESCRIPTION

When the Trap is first set and the box filled with water to the outlet N, the copper cylinder C remains up, and the inlet A from the steam pipes is closed. The water in the box now enters the cylinder through the hole F, causing it to drop to position E, thereby opening the valve A, and letting the water from the pipes into the cylinder. The steam pressure follows this water and forces it out into the box through the tube D, and thence through the outlet N. The cylinder then rises and the process is repeated.

Trap Size	Capacity	Price
3/8 in. Trap	will drain 600 feet of 1 1/4 piping,	\$25 00
1/2 in. " " "	1,200 " " "	35 00
3/4 in. " " "	2,000 " " "	45 00
1 in. " " "	4,000 " " "	55 00
1 1/4 in. " " "	5,500 " " "	65 00

These Steam Traps are 1/4 inch larger than represented, except the 3/8 which is 1/2 inch.

MILLER BROS. & MITCHELL, Montreal, Que.

NICHOLLS & HOWLAND, Sole Agents for Ontario.

LIST OF ADVERTISERS

	PAGE.		PAGE.
Alexander & Cable	4	Henderson, Jas. S. & Co.....	12
Boiler Inspection Co., The	26	Knabe, Wm. & Co.....	24
Barton, Edward J.....	8	Macdonald, John & Co.....	48
Bingham & Webber	8	Micklethwaite's Photograph Gallery ..	28
Brooks' Spool Cotton.....	8 and 24	Miller Bros. & Mitchell	46
"Canadian Manufacturer," The... ..	24	Millers & Manuf's Insurance Co. . Back cover	
Canadian Rubber Co'y.....	2	Nichoils & Howland.....	44
Cook & Bunker	4	Pittman, J. & Co.....	Front cover
Cunningham, R. & Co.....	12	Queen's Hotel	44
Gate City Stone Filter Co.....	12, 18, 28	Russel, John	24
Gurney Co., E. & C.....	6	Ross, Hilyard & Co.....	4
Gillespie, Ansley & Martin	18	Rogers, Elias & Co.....	4
Herr Piano Co.....	2	Robinson, Chas. & Co.....	Back cover
Howland, H. S., Sons & Co.....	10	Schlicht & Field Co., Ltd.....	10
Howland, H. S., Flour	26	Sandham, Chas. A.....	18



1888

JOHN MACDONALD & CO.

TORONTO

WHOLESALE IMPORTERS OF

DRY GOODS, CARPETS, WOOLLENS, GENTS'
FURNISHINGS, FANCY GOODS, &c.

DEPARTMENTS

STAPLES—Cottons, Sheetings, Denims, Jeans, Linings, Flannels, Canton Flannels, Yarns, Battings, Waddings, Tickings.

LINENS—Towels, Towellings, Napkins, Doylies, Diapers, Hollands, Canvas, Hessians, Burlaps, Sackings.

STUFFS—Cashmeres, Corda, Jerseys, Foules, Beiges, Soleils, Tweed Effects, Bouls, Armures, Serpes, Mekons.

HOSIERY—Women's, Misses' and Children's Hosiery in Cotton, Merino, Cashmere, Silk and Wool. Gloves in Kid, lined and unlined, Silk, Merino, Cashmere and Cloth.

SILKS—Colored Silks and Satins in all the leading shades. Black Silks and Satins in all the popular makes.

LACES—Muslins and Laces in Swiss, German, English, Irish, Scotch and American makes.

IMPORTED WOOLLENS—English and Scotch Tweeds, Suitings, Serges, Overcoatings and Mantle Cloths.

CANADIAN TWEEDS—Blosses, Union Tweeds, All-Wool Tweeds, Serges, Suitings.

GENTS' FURNISHINGS—Men's Collars and Cuffs, Ties, Handkerchiefs, Dress, Regatta and Top Shirts, Imported and Canadian Shirts and Drawers, Cardigans, Kid Gloves, lined and unlined.

HABERDASHERY—Braids, Buttons, Cottons, Wool, Tapes, Pins, etc.

FANCY GOODS.
CARPETS—Brussels, Tapestry, Kidderminster and Hemp Carpets, Matings, Floor Oilcloths, Mats, Rugs, etc., etc.

HOUSE FURNISHINGS—Laces, Madras, Tapestry and Chenille Curtains, Furniture Covers and Coverings in Silk, Worsted, Mohair and Flax, Quilts, Window Hollands, Seair Linens, Crash Cloths, etc.

Departments are always fully assorted, and buyers can feel satisfied of having their goods forwarded at once.

Inspection invited. Orders solicited. Dispatch given.

JOHN MACDONALD & CO.

51, 53, 55 AND 57 WELLINGTON STREET EAST
29, 31, 33 AND 35 FRONT STREET EAST

TORONTO

AND MANCHESTER, ENGLAND

Millers' & Manufacturers' Insurance Co'y

HEAD OFFICE, 24 CHURCH ST., TORONTO

JAMES GOLDIE, Guelph, President W. H. NOWLAND, Toronto, Vice-President

DIRECTORS

H. McCULLOCH, Galt
GEO. PATTINSON, Preston
ORDON, Me ritton

A. WATTS, Brantford
S. NEELON, St. Catharines
W. BELL, Guelph

H. N. BAIRD, Toronto
W. WILSON, Toronto
J. L. SPINK, Toronto

HUGH SCOTT, Managing Director
GEO. HANSON, Inspector

THOS. ALMSLEY, Treasurer
DOUGLAS SUTTON, Secretary

OBJECTS

1. To prevent by all possible means the occurrence of avoidable fires.
2. To obviate heavy losses from fires that are unavoidable by the nature of work done in mills and factories.
3. To reduce the cost of insurance to the lowest point consistent with the safe conduct of the business.

METHODS

1. The Company deals only with the principals of the establishments insured by it, and combines the self-interest of the insured with that of the underwriters.
2. Care, order and cleanliness must prevail in all hazards on which a policy will be granted.
3. All risks will be inspected by an officer of the Company, who will suggest improvements where necessary for safety against fire.

What appeared to be the rose-colored expectations of the Company's prospectus are justified by the facts, for we find by the statement that the Government requirement of a re-insurance reserve of fifty per cent. has been complied with. Half of the preliminary account written off, all losses provided for, and a dividend to policy-holders besides. Such a result shows what skilful underwriting will do — The Monetary Times.

CAIRNCROSS ECONOMIC FOLDING BED

IMPORTANT TO HOUSEHOLDERS & NON-HOUSEHOLDERS!

Out of Sight Out of the Way Always Ready
Takes up No Room

For MERCHANTS

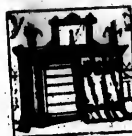
For HOTEL-KEEPERS

For FAMILIES

For NURSES attending the sick, superior to sofa-bed for convenience and comfort

For SINGLE GENTLEMEN desiring private entertaining room, being quite concealed; makes the bed-room a parlor.

For ALL—NEAT, ORNAMENTAL, ECONOMICAL, WELL VENTILATED AND HEALTHY



Right for the Office

Doubles Sleeping Accommodation

Saves making a Dormitory of the House

CHAS. ROBINSON & CO.

22 CHURCH STREET, TORONTO

Heap's Dry Earth Closets, Cameron's Oiler Sifters, &c., &c.



THE
PUBLISHED BY
J. S. MUMFORD & CO.
NEW YORK

