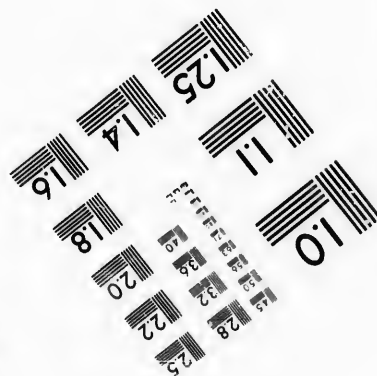
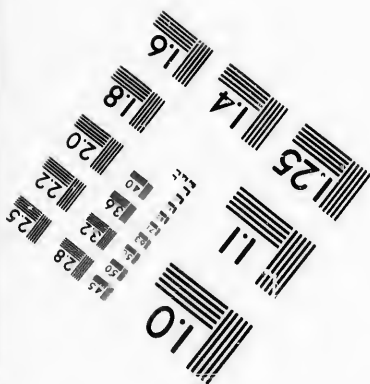
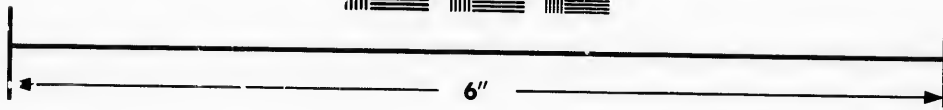
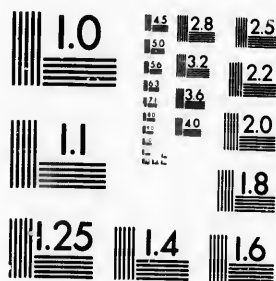


**IMAGE EVALUATION
TEST TARGET (MT-3)**



**Photographic
Sciences
Corporation**

23 WEST MAIN STREET
WEBSTER, N. Y. 14580
(716) 872-4503



**CIHM/ICMH
Microfiche
Series.**

**CIHM/ICMH
Collection de
microfiches.**



Canadian Institute for Historical Microreproductions / Institut canadien de microreproductions historiques



© 1986

Technical and Bibliographic Notes/Notes techniques et bibliographiques

The institute has attempted to obtain the best original copy available for filming. Features of this copy which may be bibliographically unique, which may alter any of the images in the reproduction, or which may significantly change the usual method of filming, are checked below.

L'Institut a microfilmé le meilleur exemplaire qu'il lui a été possible de se procurer. Les détails de cet exemplaire qui sont peut-être uniques du point de vue bibliographique, qui peuvent modifier une image reproduite, ou qui peuvent exiger une modification dans la méthode normale de filmage sont indiqués ci-dessous.

- Coloured covers/
Couverture de couleur
- Covers damaged/
Couverture endommagée
- Covers restored and/or laminated/
Couverture restaurée et/ou pelliculée
- Cover title missing/
Le titre de couverture manque
- Coloured maps/
Cartes géographiques en couleur
- Coloured ink (i.e. other than blue or black)/
Encre de couleur (i.e. autre que bleue ou noire)
- Coloured plates and/or illustrations/
Planches et/ou illustrations en couleur
- Bound with other material/
Relié avec d'autres documents
- Tight binding may cause shadows or distortion along interior margin/
La reliure serrée peut causer de l'ombre ou de la distorsion le long de la marge intérieure
- Blank leaves added during restoration may appear within the text. Whenever possible, these have been omitted from filming/
Il se peut que certaines pages blanches ajoutées lors d'une restauration apparaissent dans le texte, mais, lorsque cela était possible, ces pages n'ont pas été filmées.

- Coloured pages/
Pages de couleur
- Pages damaged/
Pages endommagées
- Pages restored and/or laminated/
Pages restaurées et/ou pelliculées
- Pages discoloured, stained or foxed/
Pages décolorées, tachetées ou piquées
- Pages detached/
Pages détachées
- Showthrough/
Transparence
- Quality of print varies/
Qualité inégale de l'impression
- Includes supplementary material/
Comprend du matériel supplémentaire
- Only edition available/
Seule édition disponible
- Pages wholly or partially obscured by errata slips, tissues, etc., have been refilmed to ensure the best possible image/
Les pages totalement ou partiellement obscurcies par un feuillet d'errata, une pelure, etc., ont été filmées à nouveau de façon à obtenir la meilleure image possible.

Additional comments: [Printed ephemera] 1 sheet (verso blank)
Commentaires supplémentaires:

This item is filmed at the reduction ratio checked below/
Ce document est filmé au taux de réduction indiqué ci-dessous.

10X	12X	14X	16X	18X	20X	22X	24X	26X	28X	30X	32X
							✓				

The copy filmed here has been reproduced thanks to the generosity of:

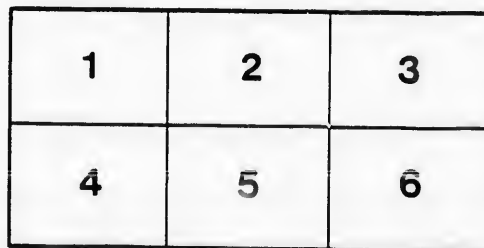
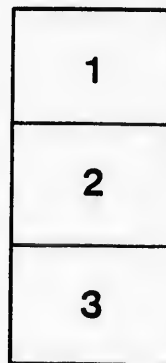
D. B. Weldon Library
University of Western Ontario
(Regional History Room)

The images appearing here are the best quality possible considering the condition and legibility of the original copy and in keeping with the filming contract specifications.

Original copies in printed paper covers are filmed beginning with the front cover and ending on the last page with a printed or illustrated impression, or the back cover when appropriate. All other original copies are filmed beginning on the first page with a printed or illustrated impression, and ending on the last page with a printed or illustrated impression.

The last recorded frame on each microfiche shall contain the symbol \rightarrow (meaning "CONTINUED"), or the symbol ∇ (meaning "END"), whichever applies.

Maps, plates, charts, etc., may be filmed at different reduction ratios. Those too large to be entirely included in one exposure are filmed beginning in the upper left hand corner, left to right and top to bottom, as many frames as required. The following diagrams illustrate the method:



L'exemplaire filmé fut reproduit grâce à la générosité de:

D. B. Weldon Library
University of Western Ontario
(Regional History Room)

Les images suivantes ont été reproduites avec le plus grand soin, compte tenu de la condition et de la netteté de l'exemplaire filmé, et en conformité avec les conditions du contrat de filmage.

Les exemplaires originaux dont la couverture en papier est imprimée sont filmés en commençant par le premier plat et en terminant soit par la dernière page qui comporte une empreinte d'impression ou d'illustration, soit par le second plat, selon le cas. Tous les autres exemplaires originaux sont filmés en commençant par la première page qui comporte une empreinte d'impression ou d'illustration et en terminant par la dernière page qui comporte une telle empreinte.

Un des symboles suivants apparaîtra sur la dernière image de chaque microfiche, selon le cas: le symbole \rightarrow signifie "A SUIVRE", le symbole ∇ signifie "FIN".

Les cartes, planches, tableaux, etc., pouvant être filmés à des taux de réduction différents. Lorsque le document est trop grand pour être reproduit en un seul cliché, il est filmé à partir de l'angle supérieur gauche, de gauche à droite, et de haut en bas, en prenant le nombre d'images nécessaire. Les diagrammes suivants illustrent la méthode.

The London Disaster.

The following lines were composed by BLIND BILL, THE FIDDLER, well known over the Dominion of Canada, on the wreck of the Victoria :

On May the 24th many souls went to rest
In a watery grave at London, Ont., west,
Her Majesty's Birthday, they on pleasure were bent,
When fully two hundred to eternity went.
The ill-fated vessel to Springbank had been,
With a large pleasure party to honor our Queen.
They left in the morning no more to return,
And grief-stricken friends were left but to mourn.

There were Fathers and Mothers their Children and all
Had to answer that night to death's awful call.
In the midst of the river, not far from the shore
They sank, helpless victims, to rise nevermore.
The scenes were heartrending, no pen can portray
The wails of the dying, their shouts of dismay.
There were lovers and brothers that night went to sleep,
And found a cold grave in that water so deep,

There were men in position and children in mirth :
Widows, Mothers and Maidens that night went from earth,
To seek in that Haven where God finds us rest,
The mansions of beauty, where all is the best.
Oh, that such a disaster may ne'er be forgot !
And another the same never fall to our lot,
But live in our memories green as it may,
And be a lesson to all from that memorable day.

The Princess Louise to the Victoria returned,
To assist mother ship, while on shore many mourned.
Mothers, fathers and daughters, broke down by their grief,
Could be seen on the bank, with no hope of relief—
Their near ones, their dear ones all gone at one sweep,
And they, mourning creatures, were left but to weep ;
Sighing and crying and quite broken down,
That night all in sadness returned to the town.

May warning be taken and care now be given
To crowding of vessels when leaving the haven ;
May all in command be trustworthy and wise,
Be prudent and watchful,—their names will then rise,—
Each one in our household will hold good their names,
Their prudence, their virtues, and care taking pains,
And speak with much pleasure of those they can trust,
As all prudent people ultimately must.—

The rotten old hulk, miserably she was,
On board no confusion—overcrowding the cause,
May God in His goodness have their souls now in heaven,
Though from earth's green sward and fountains so quickly
were driven.

We trust in our Saviour, who died for us all,
Crucified on the cross, drank vinegar and gall.
Let us hope in his bosom they all have found rest
And peace to their souls, and all now be blest.

WILLIAM KEHOE,
(BLIND BILL)

