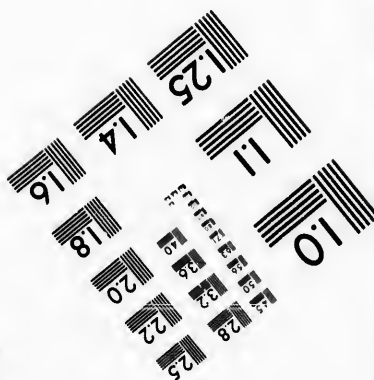
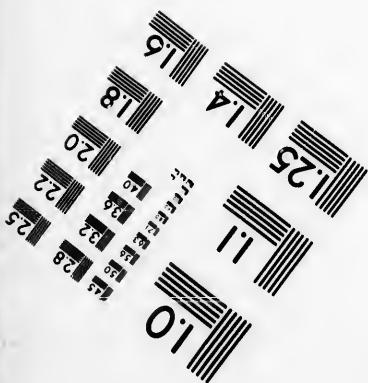
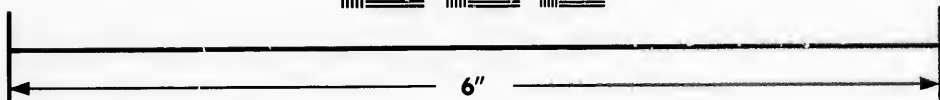
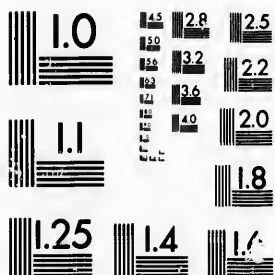


**IMAGE EVALUATION  
TEST TARGET (MT-3)**



**Photographic  
Sciences  
Corporation**

23 WEST MAIN STREET  
WEBSTER, N.Y. 14560  
(716) 872-4503

1.5 2.8  
1.8 3.2  
2.2 2.5  
2.0  
1.8

**CIHM/ICMH  
Microfiche  
Series.**

**CIHM/ICMH  
Collection de  
microfiches.**



Canadian Institute for Historical Microreproductions / Institut canadien de microreproductions historiques

1.5  
1.8  
2.0  
2.2  
2.5

**© 1987**

Technical and Bibliographic Notes/Notes techniques et bibliographiques

The Institute has attempted to obtain the best original copy available for filming. Features of this copy which may be bibliographically unique, which may alter any of the images in the reproduction, or which may significantly change the usual method of filming, are checked below.

L'Institut a microfilmé le meilleur exemplaire qu'il lui a été possible de se procurer. Les détails de cet exemplaire qui sont peut-être uniques du point de vue bibliographique, qui peuvent modifier une image reproduite, ou qui peuvent exiger une modification dans la méthode normale de filmage sont indiqués ci-dessous.

- |  |  |
|--|--|
| <input type="checkbox"/> Coloured covers/<br>Couverture de couleur   | <input type="checkbox"/> Coloured pages/<br>Pages de couleur   |
| <input type="checkbox"/> Covers damaged/<br>Couverture endommagée  | <input type="checkbox"/> Pages damaged/<br>Pages endommagées   |
| <input type="checkbox"/> Covers restored and/or laminated/<br>Couverture restaurée et/ou pelliculée  | <input type="checkbox"/> Pages restored and/or laminated/<br>Pages restaurées et/ou pelliculées  |
| <input type="checkbox"/> Cover title missing/<br>Le titre de couverture manque   | <input checked="" type="checkbox"/> Pages discoloured, stained or foxed/<br>Pages décolorées, tachetées ou piquées   |
| <input type="checkbox"/> Coloured maps/<br>Cartes géographiques en couleur   | <input type="checkbox"/> Pages detached/<br>Pages détachées  |
| <input type="checkbox"/> Coloured ink (i.e. other than blue or black)/<br>Encre de couleur (i.e. autre que bleue ou noire)   | <input checked="" type="checkbox"/> Showthrough/<br>Transparence   |
| <input type="checkbox"/> Coloured plates and/or illustrations/<br>Planches et/ou illustrations en couleur  | <input type="checkbox"/> Quality of print varies/<br>Qualité inégale de l'impression   |
| <input checked="" type="checkbox"/> Bound with other material/<br>Relié avec d'autres documents  | <input type="checkbox"/> Includes supplementary material/<br>Comprend du matériel supplémentaire   |
| <input type="checkbox"/> Tight binding may cause shadows or distortion<br>along interior margin/<br>La reliure serrée peut causer de l'ombre ou de la<br>distorsion le long de la marge intérieure   | <input type="checkbox"/> Only edition available/<br>Seule édition disponible   |
| <input type="checkbox"/> Blank leaves added during restoration may<br>appear within the text. Whenever possible, these<br>have been omitted from filming/<br>Il se peut que certaines pages blanches ajoutées<br>lors d'une restauration apparaissent dans le texte,<br>mais, lorsque cela était possible, ces pages n'ont<br>pas été filmées. | <input type="checkbox"/> Pages wholly or partially obscured by errata<br>slips, tissues, etc., have been refilmed to<br>ensure the best possible image/<br>Les pages totalement ou partiellement<br>obscurcies par un feuillet d'errata, une pelure,<br>etc., ont été filmées à nouveau de façon à<br>obtenir la meilleure image possible. |
| <input type="checkbox"/> Additional comments:/<br>Commentaires supplémentaires:  |  |

This item is filmed at the reduction ratio checked below/  
Ce document est filmé au taux de réduction indiqué ci-dessous.

10X	12X	14X	16X	18X	20X	22X	24X	26X	28X	30X	32X
					✓						

The copy filmed here has been reproduced thanks to the generosity of:

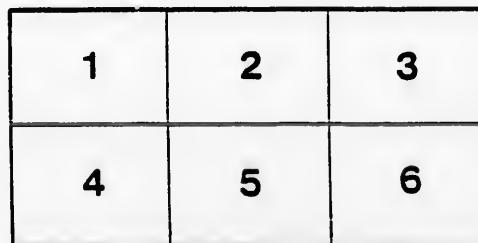
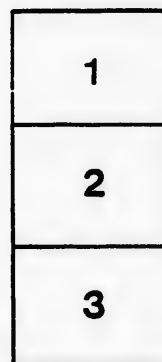
Archives of Ontario  
Toronto

The images appearing here are the best quality possible considering the condition and legibility of the original copy and in keeping with the filming contract specifications.

Original copies in printed paper covers are filmed beginning with the front cover and ending on the last page with a printed or illustrated impression, or the back cover when appropriate. All other original copies are filmed beginning on the first page with a printed or illustrated impression, and ending on the last page with a printed or illustrated impression.

The last recorded frame on each microfiche shall contain the symbol  $\rightarrow$  (meaning "CONTINUED"), or the symbol  $\nabla$  (meaning "END"), whichever applies.

Maps, plates, charts, etc., may be filmed at different reduction ratios. Those too large to be entirely included in one exposure are filmed beginning in the upper left hand corner, left to right and top to bottom, as many frames as required. The following diagrams illustrate the method:



L'exemplaire filmé fut reproduit grâce à la générosité de:

Archives of Ontario  
Toronto

Les images suivantes ont été reproduites avec le plus grand soin, compte tenu de la condition et de la netteté de l'exemplaire filmé, et en conformité avec les conditions du contrat de filmage.

Les exemplaires originaux dont la couverture en papier est imprimée sont filmés en commençant par le premier plat et en terminant soit par la dernière page qui comporte une empreinte d'impression ou d'illustration, soit par le second plat, selon le cas. Tous les autres exemplaires originaux sont filmés en commençant par la première page qui comporte une empreinte d'impression ou d'illustration et en terminant par la dernière page qui comporte une telle empreinte.

Un des symboles suivants apparaîtra sur la dernière image de chaque microfiche, selon le cas: le symbole  $\rightarrow$  signifie "A SUIVRE", le symbole  $\nabla$  signifie "FIN".

Les cartes, planches, tableaux, etc., peuvent être filmés à des taux de réduction différents. Lorsque le document est trop grand pour être reproduit en un seul cliché, il est filmé à partir de l'angle supérieur gauche, de gauche à droite, et de haut en bas, en prenant le nombre d'images nécessaire. Les diagrammes suivants illustrent la méthode.

tails  
du  
odifier  
une  
image

rrata  
to

elure,  
n à

32X

ARCH  
FORC

*County Treasurer's Office*  
**INDEX** *Co. Kent*

—TO—

**REPORTS, BY-LAWS, &C.**

OF THE

**COUNCIL OF THE CORPORATION**

—OF THE—

**COUNTY OF KENT,**

—FOR THE—

**YEARS 1871, 1872, 1873 AND 1874.**

ARCE  
TOR

# INDEX.

## JANUARY SESSION, 1871.

### REPORTS.

	Page.
From Chatham & Camden Plank Road Company.....	10
“ County Treasurer.....	12
“ Board of Public Instruction.....	18
“ Grammar School Trustees.....	19
“ County Treasurer relating to the County Gaol.....	20
“ Committee to strike the Standing Committee.....	“
“ Col. Smith, relating to Volunteer Companies.....	21
“ A. Jones, on Prangley Drain, etc.....	“
“ Committee on Finance.....	22
“ “ Roads and Bridges.....	“

### BY-LAWS.

No. 263—A By-law to appoint Officers.....	23
264— “ appoint a person to take the census of Dresden..	“
265— “ grant \$200 to sufferers from fire in Ottawa District	24
266— “ grant \$300 to repair Moravia Bridge.....	“

## JUNE SESSION, 1871.

### REPORTS.

From County Auditors.....	15
“ Treasurer, with Estimates.....	16
“ Attorney.....	“
From Committee relating to a School Section in Howard.....	17
“ to let County Bridges.....	“
“ on Public Buildings.....	“
“ on Roads and Bridges.....	“
“ on Moravia Bridge.....	18
“ on Bothwell Bridge.....	“
“ on gravel for County Roads.....	19
From County Treasurer, relating to Registry Office.....	20
“ Committee on Public Buildings.....	“
“ Equalization.....	“
“ land sold for taxes in Howard.....	22



ROTOR

From Committee on Finance.....	22
From E. B. Harrison, J. P. S.....	23
Statement showing Assessment, etc.....	21

**BY-LAWS.**

No. 267—A By-law to confirm grants of money.....	24
268— “ Incorporate Dresden.....	“
269— “ confirm a By-law of Howard.....	“
270— “ open up T. Line between Chatham & Camden..	25
271— “ amend By-law relating to Blenheim.....	“
272— “ confirm grants of money, etc.....	“
273— “ raise the sum of \$22,337.....	27
274— “ appoint Officers.....	28

**DECEMBER SESSION, 1871.**

**REPORTS.**

X From A. McDonell, relating to Bridges in Raleigh and Tilbury.....	14
“ “ “ Chatham and Dover Town Line.....	15
“ E. B. Harrison, relating to S. S. No. 14, Howard.....	“
“ County Judge's decision relating to the Co. Rate.....	“
“ Grand Jury presentment.....	17
“ Commissioners on Roads and Bridges.....	17-20
“ Committee to examine Municipal Act.....	21
“ “ on Roads and Bridges.....	27
“ A. Jones, on the Prangley Drain.....	“
“ Committee on Finance.....	28
“ Judge Wells, showing revised Assessment.....	29

**BY-LAWS.**

No. 275—A By-law to repeal and alter part of By-law No. 268.....	30
276— “ confirm appointment of Officers.....	“
277— “ confer power of Police regulations, Wallaceburg.....	“
278— “ regulate Tolls on Bothwell Bridge.....	31
279— “ grant \$10,000 to Chatham & Dover T. L. Drain.....	32
280— “ grant money on County Roads and Bridges. ....	“

**JANUARY SESSION, 1872.**

**REPORTS.**

From High School Trustees.....	11
“ Chatham and Camden Plank Road Company.....	“
“ St. Clair and Rond Eau Road Company.....	12
“ County Treasurer.....	13
“ Gaol Surgeon.....	17
“ Committee on Public Buildings.....	“
“ “ to select Standing Committee.....	18
“ Examiners of School Teachers.....	“
“ Commissioner on Bothwell Bridge.....	19
“ Committee on Roads and Bridges.....	“
“ “ Finance.....	“

From Committee on new Registry Office.....	20
“ Board of Audit.....	“
“ Engineer on Champagne Bridge.....	19

**BY-LAWS.**

No. 281—A By-law to confirm grants of money.....	21
252— “ amend By-laws relating to Public Morals.....	“
283— “ appoint certain Officers.....	“
264— “ grant money.....	22

**JUNE SESSION, 1872.**

**REPORTS.**

From County Treasurer.....	11
“ County Auditors.....	12
“ Warden, on County Bridges.....	“
“ Arbitrators, relative to S. S. No. 1., Howard.....	“
“ Inspector of Public Schools.....	13
“ Committee on Registry Office.....	13
“ “ Bothwell Bridge.....	13-14
“ “ Finance.....	“
“ “ County Bridges.....	“
“ “ Public Buildings.....	“
“ “ Equalization.....	“
“ “ Roads and Bridges.....	15

**BY-LAWS.**

No. 235—A By-law for assuming County Roads.....	15
286— “ to remove trees from County Roads.....	“
287— “ raise the sum of \$20,000.....	16
288— “ confirm grants.....	17
289— “ grant aid to build Lock-up.....	“
290— “ grant aid to Volunteers.....	“

**SPECIAL SESSION, SEPTEMBER, 1872.**

No. 291—A By-law to appoint a Clerk.....	19
--	----

**DECEMBER SESSION, 1872.**

**REPORTS.**

From Geo. Young, on Kent Bridge.....	8
“ “ plans, etc., of Dresden Lock-up.....	8
“ Commissioners on Roads and Bridges.....	9-12
“ Committee on Public Buildings.....	11
“ “ Registry Office.....	“
“ “ Finance.....	“
“ “ Equalization.....	16

**BY-LAWS.**

No. 292—A By-law to raise \$20,000 by way of loan.....	14
293— “ confirm By-law of Howard.....	15

ARC  
TOP

No. 294—A By-Law relating to County Roads.....	15
29 — “ confirm appointments.....	“
29 — “ relating to the Prangley tap drain.....	“

**JANUARY SESSION, 1873.**

**REPORTS.**

From County Treasurer.....	11
“ Inspector Public Schools.....	12
“ Committee on the assessment of Drains.....	“
“ Civil Surgeon.....	13
“ Road Eau & St. Clair Plank & Gravel Road Company.....	“
“ County High School Trustees.....	14
“ County select Standing Committee.....	15
“ “ Finance.....	“
“ “ Roads and Bridges.....	16
“ “ High School Districts.....	“
“ Board of Audit.....	17
“ Co. Treasurer relative to Tolls on Bridges.....	17

**BY-LAWS.**

No. 27—A By-law to define the Warden's duty relative to Drain. Act.....	18
28— “ confirm appointment of Officers.....	“

**JUNE SESSION, 1873.**

**REPORTS.**

From Treasurers of the several Municipalities.....	17
“ Committee to purchase gravel pit.....	18
“ “ on Printing.....	“
“ “ Meravia Bridge.....	“
“ “ Equalization.....	“
“ “ Investigation.....	“
“ “ of Public Schools.....	“
“ Preparation for taking the census of Thamesville.....	20
“ Committee relative to S. S. No. 1, Tp. of Chatham.....	21
“ County Auditors.....	21
“ Committee to let County Bridges.....	“
“ Committee on Finance.....	23
“ “ Roads and Bridges.....	“
“ “ Public Buildings.....	24
“ Department of Thamesville.....	“

**BY-LAWS.**

No. 297—A By-law to appoint Constable for Wallaceburg.....	26
300— “ “ Thamesville.....	“
301— “ “ Wallaceburg.....	27
302— “ repeal By-laws No. 285 and 294.....	“
303— “ Incorporate Thamesville.....	“
304— “ grant money for Roads and Bridges.....	28
305— “ raise \$22,738 52.....	30

## OCTOBER & NOVEMBER SESSIONS, 1873.

### REPORTS.

From	Emmumerator for taking the Census of Wallaceburg.....	3
“	Commissioners on Roads and Bridges.....	20
“	Committee on Roads and Bridges.....	21
“	“ Finance.....	“
“	“ Public Buildings.....	“
“	A. Bell, Solicitor, relating to Gravel road.....	“

### BY-LAWS.

No. 306—A	By-law to repeal By-law No. 292.....	6
307—	“ amend By-law No. 279.....	“
308—	“ repeal By-law No. 210.....	23
309—	“ confirm By-law of the Township of Chatham....	“
310—	“ Incorporate Wallaceburg.....	“
311—	“ grant certain sums of money.....	24

## JANUARY & MARCH SESSIONS, 1874.

### REPORTS.

From	Prov. Secretary's office, relative to an outlet to the Thames.....	9
“	T. N. Molesworth, P.L.S., “ “.....	“
“	Deputy Militia & Defence, relating to Barrack Ground.....	“
“	Sec'y of Agricultural Society, Kent, “ “.....	“
“	Board of High School Trustees.....	“
“	County Treasurer.....	10
“	Road Eau & St. Clair Plank and Gravel Road Co.....	13
“	Wm.G. McGeorge, on Chatham & Dover T. Line Drain.....	11
“	Inspector of Public Schools.....	15
“	Gov. Surgeon.....	“
“	Committee to examine Tecumseh Bridge.....	“
“	“ select the Standing Committee.....	“
“	Census-taker of the Village of Blenheim.....	24
“	Surveyor on Town Line between A'dborough and Orford.....	“
“	Committee to repair Tecumseh Bridge.....	“
“	Secretary Chatham & Camden Plank Road Co.....	“
“	Committee on Tecumseh Bridge.....	25
“	“ Public Buildings.....	“
“	“ Roads and Bridges.....	“
“	“ Tap for River Thames.....	“
“	“ Finance.....	26

### BY-LAWS.

No. 312—A	By-law to raise by way of loan the sum of \$20,000.....	16
313—	“ appoint a Census-taker for Blenheim.....	17
314—	“ confirm a By-law of the Township of Chatham..	“
315—	“ appoint an Inspector of Licenses.....	“
316—	“ appoint Officers.....	18
317—	“ appropriate \$100 on road between Tilbury East and Raleigh.....	27
318—	“ Incorporate the Village of Blenheim.....	“

ARC  
TOP

**JUNE SESSION, 1874.**

**REPORTS.**

From A. Bell, relating to the Erie & Huron Railway.....	9
“ County Clerk, “ “ .....	“
“ Gen. Manager G. W. R. relating to the Tap for the Thames.....	“
“ City Clerk, London, “ “ .....	“
“ Public Inspector of Schools.....	“
“ Committee on Immigration.....	11
“ “ line between Tilbury East and Raleigh.....	“
“ County Auditors.....	12
“ Committee on line between Howard and Harwich.....	“
“ “ Printing.....	“
“ “ Public Buildings.....	22
“ “ Roads and Bridges.....	13
“ “ Equalization.....	“
“ “ Finance.....	“
“ “ .....	18

**BY-LAWS.**

No. 319—A By-law to grant \$155,000 as bonus to the C. S. R. <i>Since 1874</i>	14
320— “ “ \$2,955 32 for current expenses.....	16

**SPECIAL SESSION AND DECEMBER SESSION, 1874.**

**REPORTS.**

From Committee appointed to prepare address to Governor-General....	
“ Clerk Tp. Chatham with report on Jackson Drain.....	11
“ County Officers requisition for a Care-taker.....	“
“ County of Orford, relating to Tap for the Thames.....	“
“ Commissioners on Roads and Bridges.....	11-14
“ Committee to draft Petition relating to Poor House.....	14
“ Inspector of Licenses.....	15
“ Committee to draft Petition relating to Prohibition.....	“
“ “ relative to charges against Public School Inspector.....	“
“ Warden, relating to sale of Toll Houses.....	16
“ Committee to build Tecumseh Bridge.....	“
“ W. H. Gonne, Supt. Tecumseh Bridge.....	“
“ Percy Smith, Inspector Registry Offices.....	17
“ Committee on Roads and Bridges.....	“
“ “ Finance.....	18
“ W. H. Gonne, on Tecumseh Bridge.....	“
“ Committee on Kent Bridge.....	19
“ Supt. on Moravian Bridge.....	“
“ Committee on Finance (second report).....	“

**BY-LAWS.**

No. 321—A By-law to grant \$150 on Co. L. between Kent & Lambton.	20
322— “ amend By-law Incorporating Blenheim.....	“
323— “ confirm By law of Chatham Tp.....	“

**By-Laws, consolidated 1868.**  
**Rules of Order, adopted 1870.**

