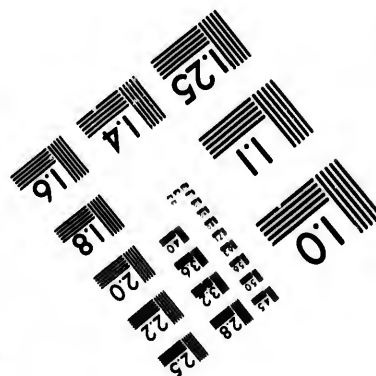
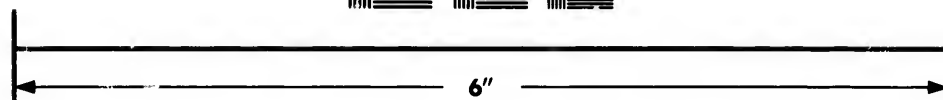
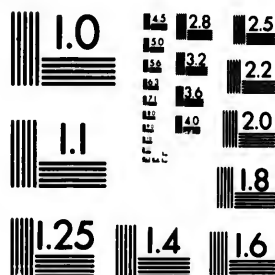


# IMAGE EVALUATION TEST TARGET (MT-3)



Photographic  
Sciences  
Corporation

23 WEST MAIN STREET  
WEBSTER, N.Y. 14580  
(716) 872-4503

**CIHM/ICMH  
Microfiche  
Series.**

**CIHM/ICMH  
Collection de  
microfiches.**



Canadian Institute for Historical Microreproductions / Institut canadien de microreproductions historiques

**© 1982**

# Technical and Bibliographic Notes/Notes techniques et bibliographiques

The Institute has attempted to obtain the best original copy available for filming. Features of this copy which may be bibliographically unique, which may alter any of the images in the reproduction, or which may significantly change the usual method of filming, are checked below.

- ☒ Coloured covers/  
Couverture de couleur
- ☐ Covers damaged/  
Couverture endommagée
- ☐ Covers restored and/or laminated/  
Couverture restaurée et/ou pelliculée
- ☐ Cover title missing/  
Le titre de couverture manque
- ☐ Coloured maps/  
Cartes géographiques en couleur
- ☐ Coloured ink (i.e. other than blue or black)/  
Encre de couleur (i.e. autre que bleue ou noire)
- ☐ Coloured plates and/or illustrations/  
Planches et/ou illustrations en couleur
- ☐ Bound with other material/  
Relié avec d'autres documents
- ☒ Tight binding may cause shadows or distortion  
along interior margin/  
La reliure serrée peut causer de l'ombre ou de la  
distortion le long de la marge intérieure
- ☐ Blank leaves added during restoration may  
appear within the text. Whenever possible, these  
have been omitted from filming/  
Il se peut que certaines pages blanches ajoutées  
lors d'une restauration apparaissent dans le texte,  
mais, lorsque cela était possible, ces pages n'ont  
pas été filmées.
- ☐ Additional comments:/  
Commentaires supplémentaires:

L'Institut a microfilmé le meilleur exemplaire qu'il lui a été possible de se procurer. Les détails de cet exemplaire qui sont peut-être uniques du point de vue bibliographique, qui peuvent modifier une image reproduite, ou qui peuvent exiger une modification dans la méthode normale de filmage sont indiqués ci-dessous.

- ☐ Coloured pages/  
Pages de couleur
- ☐ Pages damaged/  
Pages endommagées
- ☐ Pages restored and/or laminated/  
Pages restaurées et/ou pelliculées
- ☒ Pages discoloured, stained or foxed/  
Pages décolorées, tachetées ou piquées
- ☐ Pages detached/  
Pages détachées
- ☒ Showthrough/  
Transparence
- ☐ Quality of print varies/  
Qualité inégale de l'impression
- ☐ Includes supplementary material/  
Comprend du matériel supplémentaire
- ☐ Only edition available/  
Seule édition disponible
- ☒ Pages wholly or partially obscured by errata  
slips, tissues, etc., have been refilmed to  
ensure the best possible image/  
Les pages totalement ou partiellement  
obscurcies par un feuillet d'errata, une pelure,  
etc., ont été filmées à nouveau de façon à  
obtenir la meilleure image possible.

This item is filmed at the reduction ratio checked below/  
Ce document est filmé au taux de réduction indiqué ci-dessous.

10X	14X	18X	22X	26X	30X
<input type="checkbox"/>	<input type="checkbox"/>	<input type="checkbox"/>	<input checked="" type="checkbox"/>	<input type="checkbox"/>	<input type="checkbox"/>
12X	16X	20X	24X	28X	32X

The copy filmed here has been reproduced thanks to the generosity of:

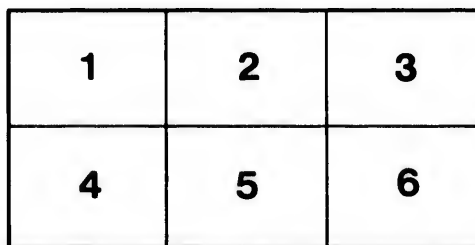
National Library of Canada

The images appearing here are the best quality possible considering the condition and legibility of the original copy and in keeping with the filming contract specifications.

Original copies in printed paper covers are filmed beginning with the front cover and ending on the last page with a printed or illustrated impression, or the back cover when appropriate. All other original copies are filmed beginning on the first page with a printed or illustrated impression, and ending on the last page with a printed or illustrated impression.

The last recorded frame on each microfiche shall contain the symbol ➡ (meaning "CONTINUED"), or the symbol ▼ (meaning "END"), whichever applies.

Maps, plates, charts, etc., may be filmed at different reduction ratios. Those too large to be entirely included in one exposure are filmed beginning in the upper left hand corner, left to right and top to bottom, as many frames as required. The following diagrams illustrate the method:



L'exemplaire filmé fut reproduit grâce à la générosité de:

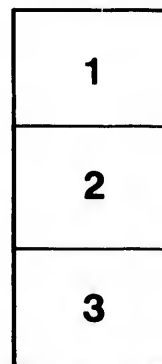
Bibliothèque nationale du Canada

Les images suivantes ont été reproduites avec le plus grand soin, compte tenu de la condition et de la netteté de l'exemplaire filmé, et en conformité avec les conditions du contrat de filmage.

Les exemplaires originaux dont la couverture en papier est imprimée sont filmés en commençant par le premier plat et en terminant soit par la dernière page qui comporte une empreinte d'impression ou d'illustration, soit par le second plat, selon le cas. Tous les autres exemplaires originaux sont filmés en commençant par la première page qui comporte une empreinte d'impression ou d'illustration et en terminant par la dernière page qui comporte une telle empreinte.

Un des symboles suivants apparaîtra sur la dernière image de chaque microfiche, selon le cas: le symbole ➡ signifie "A SUIVRE", le symbole ▼ signifie "FIN".

Les cartes, planches, tableaux, etc., peuvent être filmés à des taux de réduction différents. Lorsque le document est trop grand pour être reproduit en un seul cliché, il est filmé à partir de l'angle supérieur gauche, de gauche à droite, et de haut en bas, en prenant le nombre d'images nécessaire. Les diagrammes suivants illustrent la méthode.



Pr

V



Entered

*For particulars of Special Railway Rates see page 6.*

# PRIZE LIST

—AND—

## PROGRAMME OF ATTRACTIONS

---

# WINNIPEG INDUSTRIAL EXHIBITION.

---

JULY 25th to 29th, 1892,

—AT—

WINNIPEG, MANITOBA.

**\$15,000 in Prizes.**



Entered according to the Act of Parliament of Canada in the year 1892, in the office of the Minister of Agriculture, at Ottawa, by the Winnipeg Industrial Exhibition Association.

## RAILWAY FACILITIES.

---

### Free Transportation for Exhibits and Greatly Reduced Rates for Passengers.

---

The Canadian Pacific, Manitoba & North Western, Northern Pacific and Great North West Central Railway Companies and the Alberta Railway and Coal Company have generously agreed to convey all exhibits from Manitoba and the Northwest Territories absolutely free of freight charges, provided the ownership of the exhibits is not changed, and that they are returned immediately after the show to the points from which they were originally shipped.

From points east of Manitoba exhibits will be brought in at the ordinary tariff rates, and will be returned to the original place of shipment free of charge, provided the ownership does not change.

The Railway Companies have also agreed to greatly reduce rates of fare for visitors to the Exhibition. From many points the fares for the round trip will be much less than the ordinary fares for the single journey. Full particulars of these special passenger rates will be found on page 6

---

### ACCOMMODATION FOR LIVE STOCK.

---

Exhibitors are requested to send in entries for live stock as soon as possible so that proper allotment of stalls may be made.

Page

"

"

"

"

"

"

"

\$15," in  
Page

## ERRATA.

Page 16, Class 1, Sec. 5—After 25 read "and silver medal."

" 17, " 6, " 3—Read "Cochrane" instead of "Cockrane."

" 18, " 6, " 7—Third prize, \$10.

" 24, " 12, " 10—After word value read "\$25."

" 25, " 24, " 6—Add third prize, \$2.

" 28, " 35, " 3—Add third prize, \$3.

" 29, " 38, " 36—Read "any" for "and."

" 30, " 47, " 11—Omit second prize.

" 40, " 52, " 2—Read "12" instead of "22."

" 47, " 60, " 63—Read "Special by R. H. Nunn & Co., goods value \$15," instead of "Special \$5."

Page 57—In the 13th line read "O. Simmunson, \$5."



## **RAILWAY FACILITIES.**

---

**Free Transportation for Exhibits and Greatly  
Reduced Rates for Passengers.**

---

The Canadian Pacific, Manitoba & North Western,  
Northern Pacific and Great North West Central Rail-  
way Companies and the Alberta Railway and Coal  
Company have generously agreed to convey all exhibits  
from Manitoba and the Northwest Territories  
by free of charge.

---

## **ACCOMMODATION FOR LIVE STOCK.**

---

Exhibitors are requested to send in entries for live  
stock as soon as possible so that proper allotment of  
stalls may be made.

atly

stern,  
Rail-  
Coal  
hibits

will be

or live  
ent of

When filled up send this entry paper with fees. by registered letter, to the Secretary, J. K. Strachan, Winnipeg.

# Winnipeg Industrial Exhibition, 1892.

**JULY 25 TO 29.**

# FORM OF ENTRY:

TO THE SECRETARY-TREASURER, INDUSTRIAL EXHIBITION, WINNIPEG,

I the undersigned propose to exhibit at the Industrial Exhibition, to be held at the City of Winnipeg from July 25th to 29th, 1892, the articles or stock hereinafter named, and do hereby Certify that the said hereinafter mentioned articles or stock so proposed to be exhibited are here entered for Exhibition strictly in accordance with the Rules and Regulations contained in the Exhibition Prize List, and by which I hereby agree to be governed in exhibiting the same.

**✓** The necessary fees, amounting to \$.....are sent herewith.

**Signature,**

Date,.....1892.

**Post Office,**

**Entry No. ....**

Province.

**NOTICE TO EXHIBITOR.**—All Fees for Exhibiting must be sent with the entry. See Rules in Prize List.

**All Entries must be made on or before 14th July.**

**EST** In entering Manufactures please give, as near as possible, the amount of floor space required.....feet frontage by.....in depth.

**Fill this up and return it with Fees to J. K. Strachan, Secretary-Treasurer of the Exhibition, Winnipeg, as early as possible.**

**££ The Registration Number of Stud or Herd Book and Name of Animal must be given with all entries of Thoroughbred Horses and Purebred Cattle.**

[illegible]



# Winnipeg Industrial Exhibition

# Winnipeg Industrial Exhibition

**JULY 25th TO 29th, 1892.**

*I enter the Dogs herein named subject to the Rules and Regulations under which the show is held and enclose*

*50 cents fee for each animal.*

*(Entry No. ....)*

[illegible]

**Entrance Fees must accompany all entries.**

**Entries close July 14th, 1892.**

Name of Exhibitor:

P.O. Address

When filled up send this entry paper with fees, by registered letter, to the Secretary, J. K. Strachan, Winnipeg.

Pr

I

Mo

*Ent*

Ent  
M

7

# PRIZE LIST

AND

## PROGRAMME OF ATTRACTIONS

OF THE

# Winnipeg

# Industrial Exhibition,

TO BE HELD AT

WINNIPEG, MANITOBA,

Monday to Friday, July 25, 26, 27, 28 and 29, 1892.

---

---

**\$15,000 IN PRIZES.**

Competition open to the World, except in certain classes when  
otherwise stated.

---

---

*Entries for all Classes close July 14th with the Secretary-Treasurer,  
J. K. Strachan, Winnipeg, from whom copies of this list  
and all particulars can be obtained.*

Entered according to the Act of Parliament of Canada, in the year 1892, in the office of the  
Minister of Agriculture, at Ottawa, by the Winnipeg Industrial Exhibition Association.

---

WINNIPEG:  
H. BUCKLE, SONS & CO., PRINTERS.  
1892.



# Winnipeg Industrial Exhibition Association, 1892.

## DIRECTORS.

PRESIDENT, MR. ALEXANDER MACDONALD.

VICE-PRESIDENT, MR. D. E. SPRAGUE.

Mr. J. H. Ashdown.	Mr. A. F. Eden.	Mr. W. Risk.
" N. Bawlf.	" F. A. Fairchild.	" W. B. Scarth.
" N. Boyd.	" L. A. Hamilton.	" A. Strang.
" W. Brydon.	" W. Martin.	" J. R. Sutherland.
" M. Bull.	" S. Nairn.	" H. S. Westbrook.
" E. L. Drewry.	" R. T. Riley.	

ALDERMEN CARRUTHERS AND COCKBURN, representing the City Council of Winnipeg.

MR. ACTON BURROWS, representing the Manitoba Dairy Association.

MR. J. S. ROBSON, representing the Pure Bred Cattle Breeders Association.

MR. H. A. CHADWICK, representing the Manitoba Poultry Association.

SECRETARY-TREASURER AND MANAGER, J. K. STRACHAN.

## STANDING COMMITTEES.

### FINANCE.

Messrs. A. Strang, (Chairman), D. E. Sprague, W. B. Scarth, J. H. Ashdown, R. T. Riley, N. Bawlf, Ald. Carruthers, A. F. Eden.

### GROUNDS AND BUILDINGS.

Messrs. R. T. Riley (Chairman), E. L. Drewry, D. E. Sprague, W. Martin, A. Strang, W. Brydon, S. Nairn, W. Risk, Ald. Cockburn.

### LEGISLATIVE.

Messrs. A. Macdonald, E. L. Drewry, A. Strang.

### PRINTING AND ADVERTISING.

Messrs. Acton Burrows (Chairman), M. Bull, L. A. Hamilton, H. S. Westbrook, Ald. Carruthers.

### PRIZE LIST.

Messrs. W. Martin (Chairman), Acton Burrows, M. Bull, L. A. Hamilton, S. Nairn, W. Risk, N. Boyd, J. R. Sutherland, R. W. Woodroffe, Dr. J. A. McArthur, Jas. Hooper, R. Muir, J. S. Robson, Geo. Craig, H. A. Chadwick, W. F. Henderson, S. M. Barre, J. L. Bucknall, A. K. Leith.

### PROGRAMME AND ATTRACTIONS.

Messrs. M. Bull (Chairman), R. T. Riley, D. E. Sprague, E. L. Drewry, H. S. Westbrook, F. A. Fairchild, A. F. Eden, N. Boyd, J. R. Sutherland, J. W. Harris, C. H. Wheeler, Capt. Douglas, P. Tulloch, W. Osborne, T. A. Anderson.

### TRANSPORTATION.

Messrs. W. B. Scarth (Chairman), W. Martin, Acton Burrows, J. H. Ashdown, L. A. Hamilton.

ciation, 1892.

SALD.

Mr. W. Risk.  
" W. B. Scarth.  
" A. Strang.  
" J. R. Sutherland.  
" H. S. Westbrook.

nting the City Council  
airy Association.  
le Breeders Association.  
oultry Association.

K. STRACHAN.

ES.

B. Scarth, J. H. Ash-  
en.

E. Sprague, W. Martin,  
rn.

Hamilton, H. S. Wes-

Bull, L. A. Hamilton,  
W. Woodroffe, Dr. J. A.  
Craig, H. A. Chadwick,  
Leith.

ES.

Sprague, E. L. Drewry,  
l, J. R. Sutherland, J. W.  
Osborne, T. A. Ander-

cton Burrows, J. H. Ash-

## Programme of Exhibition, 1892.

### Saturday and Monday, July 23rd and 25th.

The grounds and buildings will be thrown open for the reception of exhibits, as many as possible of which should be placed in position during these days. Persons entitled to free admission during the exhibition should apply at the Secretary-Treasurer's office for tickets or badges, so as to avoid the rush after the exhibition is opened.

### Tuesday, July 26th.

The exhibition gates will be closed at 10 a. m. after which hour no further admission will be allowed without tickets. Persons entitled to free admission are to apply to the Secretary-Treasurer's office for tickets or badges. Judges for all classes except live stock are to report at the Secretary's office at one o'clock p. m., punctually to commence their duties. The buildings will be closed till the judges complete their awards.

### Wednesday, July 27th.

The Exhibition will be formally opened by the President of the Association at 10 a. m. Judging on live stock will commence at 10 a. m. The live stock will be paraded in the ring while being judged. See next page for general programme of attractions.

### Thursday, July 28th.

Exhibition open at 9 a. m. Grand parade of prize cattle at two o'clock and prize horses at three o'clock. See next page for general programme of attractions.

### Friday, July 29th. Children's Day.

Exhibition open at 9 a. m. Prize live stock will be again paraded at two and three o'clock p. m. See page 5 for general programme of attractions.

### Saturday, July 30th.

The gates will be opened at day-light to facilitate the removal of exhibits. Exhibitors will be required to remove all their property during the day.

# ATTRACTION PROGRAMME.

START AT 2 O'CLOCK EACH DAY.

## Wednesday, July 27th

- 1st. 1 mile running for Stallions, who have made a full season (thus far) for 1892. Entrance fee \$2.00. 1st prize \$75.00; 2nd prize \$25.00.
  - 2nd. Running race for Mares and Geldings, entered for prizes at Exhibition. Half mile heats, two in three. Entrance fee \$2.00. 1st prize \$50.00. 2nd prize by E. F. Hutchings, saddle, value, \$25.00.
  - 3rd. Fastest walking team to a heavy wagon. Half mile. Entrance free. 1st prize \$10.00; 2nd prize \$5.00.
  - 4th. Open trot for Green Horses. Mile heats. Two in three. Entrance \$2.00. 1st prize, \$40.00; 2nd prize \$25.00.
  - 5th. Hurdle race. 1 mile; 6 hurdles. 1st prize \$75.00; 2nd prize \$50.00; 3rd prize \$25.00.
  - 6th. 3 p.m. Baseball Match. Winnipeg versus All Comers. Prize \$25.00.
  - 7th. Foot Races (amateur). 3 p.m.—100 yards dash. Medals. 1st \$15.00; 2nd \$10.00. 3.20 p.m.—440 yards dash. Medals. 1st \$15.00; 2nd \$10.00. 4 p.m. 1 mile dash. Medals. 1st \$15.00; 2nd \$10.00.
  - 8th. Gymnastic Exhibition. Programme to be arranged by Winnipeg Gymnastic Association \$75.00 in prizes.
  - 9th. 8 p.m. Band Competition. 1st prize \$85.00; 2nd prize \$50.00. Band winning prizes to furnish music afternoons and evenings.
- Band afternoon and evening.

## Thursday, July 28th.

- 1st. Mile heats, 2 in 3, for Stallions in harness, who have made a full season (thus far) for 1892. Entrance \$2.00. 1st prize \$75.00; 2nd \$25.00 (Sharper barred.)
- 2nd. Team race, mile heats, 2 in 3, to harness. Entrance \$2.00. 1st prize Buggy; donated by F. A. Fairchild, value \$100; 2nd \$50.00; 3rd \$25.00. Teams owned and used as road teams only eligible.
- 3rd. Best Lady Rider. 1st prize value \$25.00; 2nd by H. S. Westbrook, Ladies saddle, value \$15.00; 3rd value, \$10.00
- 4th. Gentleman's Flat Race, 1 mile dash for Saddle Horses ridden by owner during the season. Entrance free. Cup \$25.00; donated by D. K. Dingwall.
- 5th. Gentleman's Road Race to buggie; mile heats, 2 in 3, owners to drive. Entrance free. 1st prize value \$10.00; 2nd value \$5.00. Horses that have been used for road purposes only, for 1892 eligible.

6th. Hor  
cl  
m  
th  
B  
ho

7th. Far  
2

Lacrosse

Bicycle R  
ea

Grand B  
pa

Special at

Band after

## Friday

1st. Faste  
W

2nd. Dog  
Ta

3rd. 2 p.m.  
En

4th. 2.40  
3rd

5th. Race  
\$2

6th. Pony  
hea

7th. Hors  
pay  
mu  
As  
to

School D

Military S

Children's

High Jum

Rugby Fo

Grand Ba

Special At

Band after

# PROGRAMME.

DAY.

Season (thus far) for 1892  
\$25.00.

or prizes at Exhibition  
0.00. 1st prize \$50.00.  
0.00.

le. Entrance free. 1s

three. Entrance \$2.00

; 2nd prize \$50.00; 3rd

ers. Prize \$25.00.

Medals. 1st \$15.00  
als. 1st \$15.00; 2nd  
0.00; 2nd \$10.00.

by Winnipeg Gymnast

nd prize \$50.00. Band  
enings.

ave made a full season  
e \$75.00; 2nd \$25.00

Entrance \$2.00. 1st prize  
2nd \$50.00; 3rd \$25.00

H. S. Westbrook, Ladies

Horses ridden by owner  
00; donated by D. R

2 in 3, owners to drive  
ne \$5.00. Horses tha  
ligible.

6th. Horse Breeders Association Stakes for 4 year old and under to harness. To close May 25th, when the 1st payment of \$5.00 must be made, 2nd payment \$5.00 due June 25th when horses must be named. \$100.00 added by this Association. Nominations to be made with the Secretary Horse Breeders Association, Winnipeg. 75 per cent. to first, 25 to 2nd; mile heats, 2 in 3.

7th. Farmer's Trot, Green Horses who have never started in a race. Mile heats, 2 in 3. Entrance free. 1st 25.00; 2nd \$15.00; 3rd \$10.00; 4th \$5.00.

Lacrosse Match. \$50.00 in medals.

Bicycle Races, one, two and five miles. Medals. 1st \$15.00; 2nd \$10.00, for each distance.

Grand Balloon Ascension and parachute descent by Professor T. I. Cash. For particulars see advertisement.

Special attractions to be advertised later.

Band afternoon and evening.

## Friday, 29th July, Children's Day.

1st. Fastest horse driven by his owner to wagon. Mile heats, 3 in 5; special by W. H. Barry, \$25.00.

2nd. Dog Races 1 to 2 p.m. Entrance free. Teams, 1st \$3.00; 2nd, \$2.00; Tandems, 1st \$3.00; 2nd \$2.00. Single, 1st \$3.00; 2nd \$2.00.

3rd. 2 p.m. Pony race (boy riders) half mile heats, 2 in 3, ponies under 13 hands, Entrance free. 1st prize, Saddle, value \$15.00; 2nd Bridle, \$5.00.

4th. 2.40 Trot. Mile heats, 2 in 3, to harness. 1st prize \$50.00; 2nd 25.00; 3rd \$15.00.

5th. Race for 3 years old and under, to harness, mile heats 2 in 3. Entrance \$2.00. 1st prize \$50.00; 2nd \$25.00.

6th. Pony Race. Ponies under 13 hands high, driven by boy or girl, half mile heats, 2 in 3. Entrance free. 1st prize, value \$10.00; 2nd, value \$5.00.

7th. Horse Breeders Association Stake for all ages running 1½ mile dash, 1st payment \$5.00 due May 25th, 2nd payment \$5.00 June 25th, when horses must be named. Nominations to close with the Secretary Horse Breeders Association, Winnipeg. \$125.00 added by this Association, 85 per cent. to 1st, 15 per cent. to 2nd; weight for age.

School Drill Competition. Prize, Flag, value \$25.00.

Military Sports.

Children's Foot Races. \$50.00 for prizes.

High Jumping competition for horses. 1st Prize \$20.00; 2nd \$10.00.

Rugby Foot Ball Match; open to all comers. \$50.00 in medals.

Grand Balloon Ascension and parachute descent by Professor T. I. Cash.

Special Attractions to be advertised later.

Band afternoon and evening.

# SPECIAL Railway Excursion Rates TO THE EXHIBITION.

## LOW FARES ON ALL LINES.

Following is a list of Special Passenger Rates on the various railways, which will be in force during the Exhibition week. For further particulars see railway posters, or apply to any station agent. The rates given below are in all cases for the double journey to Winnipeg and return. In many cases they are lower than the ordinary one-way fare.

### CANADIAN PACIFIC RAILWAY.

#### Main Line East.

Rat Portage .....	\$ 4 00
Keewatin .....	3 95
Kalmar .....	3 35
Rennie .....	2 50
Whitemouth .....	1 95
Monmouth .....	1 45
Beausejour .....	1 15
Tyndall .....	95
East Selkirk .....	65
Birds Hill .....	25

#### Main Line West.

Rosser .....	45
Marquette .....	90
Reaburn .....	1 05
Poplar Point .....	1 20
High Bluff .....	1 45
Portage la Prairie .....	1 65
Burnside .....	1 90
McGregor .....	2 35
Austin .....	2 55
Sidney .....	2 80
Carberry .....	3 20
Sewell .....	3 45
Douglas .....	3 60
Chater .....	3 85
Brandon .....	4 00
Kennay .....	4 20
Alexander .....	4 35
Griswold .....	4 55
Oak Lake .....	4 65
Virden .....	4 95
Elkhorn .....	5 30
Fleming .....	5 60
Moosomin .....	5 75
Wapella .....	6 05
Whitewood .....	6 35

### C. P. R. Main Line West.

Broadview .....	\$ 6 65
Grenfell .....	6 95
Wolseley .....	7 25
Sintaluta .....	7 45
Indian Head .....	7 65
Qu'Appelle .....	7 85
Balgonie .....	8 20
Regina .....	8 50
Pense .....	8 85
Moose Jaw .....	9 35
Rush Lake .....	11 15
Swift Current .....	11 60
Maple Creek .....	13 30
Dunmore .....	14 40
Medicine Hat .....	14 55
Gliechen .....	17 05
Calgary .....	18 15
Cochrane .....	18 65
Morley .....	19 00
Canmore .....	19 50
Anthracite .....	19 70
Banff .....	19 80
Palliser .....	21 25
Golden .....	21 50
Donald .....	21 85

#### Stonewall Branch.

Stony Mountain .....	55
Stonewall .....	80

#### West Selkirk Branch.

West Selkirk .....	90
--------------------	----

#### Emerson Branch.

Niverville .....	95
Otterburne .....	1 25
Dominion City .....	2 25
Emerson .....	2 60

Starbu  
Carna  
Trehe  
Hollan  
Cypres  
Glenbo  
Stockt  
Methve  
Nesbet

La Sai  
Morris  
Rosenf  
Gretna  
Plum C  
Morde  
Thornl  
Maito  
La Riv  
Pilot M  
Crystal  
Clearw  
Cartw  
Holmf  
Killarn  
Ninga  
Boissev  
Whitev  
Delora

Beresf  
Souris  
Hartne  
Lauder  
Napin  
Melita  
Gainsl  
Carnd  
Oxbow

Lumsd  
Saskat  
Duck  
Prince

Innisfa  
Red D  
Edmor

MANIT  
Westb  
Gladst  
Arden  
Neepa  
Minne  
Rapid  
Newda

# Rates

## RAILWAYS.

For all railways, which will be  
allway posters, or apply  
for the double journey to  
ordinary one-way fare.

### Main Line West.

.....	\$ 6 65
.....	6 95
.....	7 25
.....	7 45
.....	7 65
.....	7 85
.....	8 20
.....	8 50
.....	8 85
.....	9 35
.....	11 15
.....	11 60
.....	13 30
.....	14 40
.....	14 55
.....	17 05
.....	18 15
.....	18 65
.....	19 00
.....	19 50
.....	19 70
.....	19 80
.....	21 25
.....	21 50
.....	21 85

### Wall Branch.

.....	55
.....	80

### Elkirk Branch.

.....	90
-------	----

### son Branch.

.....	95
.....	1 25
.....	2 25
.....	2 60

## Special Railway Excursion Rates.—Continued.

### South-Western Branch.

Starbuck .....	\$ 1 10
Carmar .....	2 30
Treherne .....	3 10
Holland .....	3 40
Cypress River .....	3 80
Glenboro .....	4 00
Stockton .....	4 00
Methven .....	4 00
Nesbitt .....	4 15

### Pembina Mount-In Branch.

La Salle .....	70
Morris .....	1 60
Rosenfeld .....	2 15
Gretna .....	2 65
Plum Coulee .....	2 55
Morden .....	3 15
Thornhill .....	3 40
Manitou .....	4 00
La Riviere .....	4 25
Pilot Mound .....	4 50
Crystal City .....	4 55
Clearwater .....	4 65
Cartwright .....	4 95
Holmfield .....	5 10
Killarney .....	5 25
Ninga .....	5 50
Boissevain .....	5 65
Whitewater .....	5 85
Deloraine .....	6 05

### Souris Branch.

Beresford .....	4 35
Souris .....	4 50
Hartney .....	4 80
Lauder .....	5 00
Napinka .....	5 20
Melita .....	5 35
Gainsborough .....	5 80
Carnduff .....	7 10
Oxbow .....	7 45

### Prince Albert Branch.

Lumsden .....	8 90
Saskatoon .....	11 70
Duck Lake .....	12 75
Prince Albert .....	13 45

### Edmonton Branch.

Immisfail .....	19 70
Red Deer .....	20 05
Edmonton .....	22 00

### MANITOBA AND NORTH WESTERN RY.

Westbourne .....	\$ 2 35
Gladstone .....	3 05
Arden .....	3 75
Neepawa .....	4 05
Minnedosa .....	4 45
Rapid City .....	4 75
Newdale .....	4 80

### M & N. W. Ry.

Strathclair .....	\$ 4 95
Shoal Lake .....	5 15
Solsgrith .....	5 45
Birtle .....	5 60
Binscarth .....	5 95
Russell .....	6 00
Langenburg .....	6 30
Salcoats .....	6 80
Vorkton .....	7 15

### NORTHERN PACIFIC RAILWAY.

Portage Junction .....	\$ 10
St. Norbert .....	35
Cattier .....	60
St. Agathe .....	95
Union Point .....	1 10
Silver Plains .....	1 30
Morris .....	1 60
St. Jean .....	1 85
Letellier .....	2 25
Emerson .....	2 60

### Portage la Prairie Branch.

St. Charles .....	\$ 35
Headingley .....	40
White Plains .....	65
Eustace .....	1 05
Oakville .....	1 25
Portage la Prairie .....	1 65

### Morris-Brandon Branch.

Lowe Farm .....	\$ 2 00
Myrtle .....	2 45
Roland .....	2 65
Roselbank .....	2 50
Miami .....	2 50
Deerwood .....	2 90
Altamont .....	3 10
Somerset .....	3 40
Swan Lake .....	3 65
Indian Springs .....	3 90
Maricapolis .....	4 00
Greenway .....	4 00
Balder .....	4 00
Belmont .....	4 00
Hilton .....	4 00
Ashdown .....	4 00
Wawanesa .....	4 00
Rounthwaite .....	4 00
Martinville .....	4 00
Brandon .....	4 00

### GREAT NORTHWEST CENTRAL RY.

Forrest .....	\$ 4 25
Rapid City .....	4 95
Pettapiece .....	5 15
Oak River .....	5 60
Hamiota .....	5 85

### ALBERTA RAILWAY AND COAL CO.

Lethbridge .....	19 85
------------------	-------

## General Rules and Regulations.

Exhibitors will please read the following Rules carefully, and send in their entries as early as possible, and be sure that all Fees accompany the same.

**AD** When you have done with this book, please pass it around among your neighbors.

### ADMISSION TO THE GROUNDS.

The price of admission for adults will be 25 cents each time of entering, and for children, under fourteen years of age, 15 cents. The admission will be by means of registering turnstiles, and EACH PERSON MUST BE PROVIDED WITH THE PROPER TICKET OR CHANGE BEFORE ENTERING. On Friday July 20th, children, under 12 years of age, will be admitted on an admission fee of 5 cents each.

NECESSARY ATTENDANTS upon stock and machinery will be furnished with special passes on applying at the Secretary's office on the grounds. These passes will bear the names of the persons to whom they are issued, and if presented by any other person, will be forfeited. They will only admit the holders once each day before 6 p.m., and once each evening after 6 p.m. If more than one attendant is required, additional tickets may be obtained when the necessity of such is made apparent to the Secretary.

*No attendant's ticket will be issued to any exhibitor whose entrance fees amount to less than one dollar, but such exhibitor may purchase an "exhibitors" ticket.*

ONE EXHIBITOR'S ticket, admitting an exhibitor only once each day and once each evening, as above, and *positively not transferable*, may be purchased by any individual exhibiting, and if a firm, by any member thereof, at the office of the Association on the grounds, at the following rates, viz.: For the whole exhibition 75 cents, and for day and evening, 25 cents. Exhibitors paying entrance fees of \$5 and over, free.

Judges and members of the press will be furnished with tickets and badges, the latter being intended only as a means of showing their official connection with the Exhibition, and not for the purpose of securing admittance to the grounds.

The entry ticket upon animals or articles will admit the person bringing them to the Show Grounds for exhibition, along with such animals or articles, on their first entering, without the use of any other ticket; BUT AFTERWARDS SUCH PARTIES MUST BE PROVIDED WITH REGULAR PASSES OR TICKETS AS ABOVE, OR THEY WILL HAVE TO PAY THE REGULAR ADMISSION FEE.

### ENTRIES.

All entries must be made on the printed forms accompanying the prize list. These forms are to be filled up and signed by the exhibitor, and sent to the Secretary of the Association at Winnipeg, Man., on or before the 14th July.

The entrance fee must in all cases be forwarded with the entry. No entry will be accepted unless this is done. Fees should be sent by money order or in bills in registered letter. Postage stamps are not desirable.

Exhibitors will please take notice that it is absolutely required that the entries be made on or before the date above mentioned, in order to afford sufficient time to examine the entry papers, to correspond with parties when necessary and for the correction of errors and omissions. The Entry Tickets will be obtained from the Secretary on the grounds, when the exhibits are brought in.

In the Horse, Cattle, Sheep, Pig, Poultry and Dog Classes, the entry must in every instance be made in the name of the *bona fide* owner, and, unless this rule be observed, no premium will be awarded, or, if awarded, will be withheld. If any person shall exhibit any animal or bird of which he is not the *bona fide* owner, he will forfeit any premium which may be awarded him, and be precluded from exhibiting in the future.

In all the other classes entries must be made in the names of the producers or manufacturers only, and by such producers themselves, in person or their agents, who must have special authority for so doing, and shall produce the authority in writing if so required by the judges. Those who are not manufacturers or authorized agents may exhibit, but cannot compete for the prizes offered. If any person, other than the authorized agent, shall enter an article for competition, as produced or manufactured by himself, when it has not really been so he shall forfeit any premium which may be awarded the article, and be precluded from exhibiting in the future.

A merchant who sells a line of goods which are also sold by other merchants cannot be considered as an agent for such goods.

No person will be allowed to enter for exhibition more than one specimen in any one section of a class, unless the additional article be of a distinct named variety or pattern from the first. This rule not to apply to animals, but to all kinds of grain, vegetables, produce, fruit, manufactured articles, etc., in which each additional specimen would necessarily be precisely similar to the first.

*Extra Entries.*—Every article must be entered under some one of the headings in the regular list when possible; but if any article is of a distinct character from anything specified in the list, it may be entered in the class with which it most nearly corresponds.

For each animal or article, a card will be furnished the exhibitor, specifying the class, the section and the number of the entry, WHICH CARD MUST REMAIN ATTACHED TO THE ANIMAL OR ARTICLE DURING THE EXHIBITION.

In all cases the right is reserved to reject entirely, or accept conditionally, any entry or application: and under no circumstances will articles which are offensive by reason of their odor or appearance, or which are dangerous by reason of their combustible or explosive character, be admitted; and, if any such be introduced by any exhibitor through misapprehension or otherwise, they may be removed by order of the Directors.

Exhibitors shall, if required by the Directors, make a statutory declaration that the articles exhibited by them, are exhibited in accordance with the Rules and Regulations of the Association; and in case any exhibitor refuse to make such declaration, on being requested, all premiums awarded him, her or them, shall be forfeited.



## ENTRANCE FEES.

Stallions, 3 years old and upwards, each entry.....	\$1 50
All other horses, over 1 year " .....	1 00
All other horses, 1 year and under " .....	50
Bulls, 3 years old and upwards " .....	1 00
Other cattle, over 1 year " .....	50
Cattle, under 1 year " .....	25
Sheep, per head .....	25
Pigs, per head .....	25
Poultry, including coops, feed and attendance, per pair .....	30
Rabbits, including coops, feed and attendance, per pair .....	30
Dairy products, entry for each section .....	25
Grains, flour &c., each entry .....	25
Field roots, first 5 entries, lot .....	25
Field roots, over 5 entries, lot .....	50
Garden vegetables [same as field roots] .....	
Plants and flowers [same as field roots] .....	
Fruits, preserves and pickles [same as field roots] .....	
Ladies' work [same as field roots] .....	
Bees and honey, each entry .....	25
Manufactures of Manitoba, etc., each entry .....	25
Domestic Manufactures .....	25
Leather and Leather goods .....	25
Preserved Meats and Fish .....	25
Fine arts .....	25
Natural History, etc. ....	25
School Exhibits .....	free

There are no charges for space except in special cases where extra advantages, for advertising purposes may have been applied for.

Applications for space, for the exhibit of all classes of Manufactures, should be made to the Secretary as early as possible. Space will be allotted according to order of application, up to the 14th July, after which date it will be allotted according to the extent previously undisposed of.

On and after Monday, the 18th July exhibitors, their agents and workmen, will be admitted to the grounds and buildings for the purpose of making preparatory structures, or getting machinery and implements into position.

## DELIVERY OF LIVE STOCK AND ARTICLES AT GROUNDS.

All Live Stock entered must be on the grounds not later than 10 a.m. on Tuesday, July 26th. All plants and flowers in pots must be arranged on the tables by 9 a.m. on the same day. All other articles, Implements, Machinery, Stoves, Manufactures of all kinds, Honey, Fine Arts and Ladies' Work, etc., etc., must be placed in position by 6 o'clock p.m. on Monday July 25th.

SPECIAL NOTICE.—As it is intended to have the Exhibition fully open to the public at the time named, exhibitors are specially notified that articles or animals arriving after the above times will not be allowed to compete. Exhibitors of

Machinery and other heavy articles are expected to have them on the grounds and placed in position during the week preceding the opening of the exhibition.

All boxes, wrappings, and other packing material, must be cleared away and everything be in proper order before 10 a.m. Tuesday, July 26th.

Exhibitors must provide for the delivery of their articles upon the Exhibition Grounds. The Association cannot in any case, make provision for their transportation, or be subjected to any expense therefor, either on their delivery at, or return from, the grounds. All expenses connected therewith must be provided for by the exhibitors themselves, and all express and cartage charges must have been prepaid.

Articles not accompanied by their owners may be addressed to the Secretary, who will receive them on their being delivered at the grounds, but in no case will such articles be brought on the grounds and placed on exhibition except by and at the expense of the owners or their authorized agents.

Exhibitors, on arriving with their articles, will apply at the office of the Secretary, when they will be informed where the articles are to be placed.

Exhibitors will at all times give the necessary personal attention to whatever they have on exhibition, and at the close take entire charge of the same.

Articles placed on exhibition must not be removed until the close, except by permission of the Directors; and except also in the Fruit, Vegetable and Floral sections, where such removal is necessary to a continuous display.

Every facility will be afforded for the transaction of business by taking orders, but no delivery of articles sold can be made on the premises during the Exhibition, except by special arrangement.

Though the Association will take reasonable precaution to ensure the safety of articles sent to the exhibition, they wish it to be distinctly understood that the owners themselves must take the risk of exhibiting them; and that should any article be accidentally injured, lost, or stolen, the Association will give all the assistance in their power towards the recovery of the same, but WILL NOT MAKE ANY PAYMENT for the value thereof.

#### LIVE STOCK.

Good buildings are provided upon the grounds for all Live Stock. Straw for bedding, and water, will be furnished for Horses, Cattle, Sheep and Pigs, without charge, from the opening until the close of the Exhibition, so that the stock may be taken to the grounds immediately on their arrival. Hay and grain for Horses, Cattle, Sheep and Pigs, will be for sale on the grounds at lowest prices. Exhibitors will please report at once if unreasonable prices are exacted.

The production of any of the animals in the Horse Ring may be ordered by either of the Committees on Live Stock, for review or other purposes, at any time during the Exhibition; and any exhibitor or attendant refusing to bring such animal into the ring when so required, shall forfeit his entry fees and any premiums which may have been awarded him.

Stock exhibitors will have an opportunity, if desired, of selling their exhibits at auction on the afternoon of Friday, July 29th, in the exhibition grounds.

#### RAILWAY FACILITIES.

Exhibits can be unloaded from the railway cars immediately adjoining the

.....\$1 50  
..... 1 00  
..... 50  
..... 1 00  
..... 50  
..... 25  
..... 25  
..... 25  
..... 30  
..... 30  
..... 25  
..... 25  
..... 25  
..... 50  
.....  
.....  
.....  
.....  
.....  
..... 25  
..... 25  
..... 25  
..... 25  
..... 25  
..... 25  
..... free

ere extra advantages,

Manufactures, should  
allotted according to  
will be allotted ac-

agents and workmen,  
e of making prepara-  
sition.

#### AT GROUNDS.

later than 10 a.m. on  
arranged on the tables  
s. Machinery, Stoves,  
Work, etc., etc., must

ition fully open to the  
at articles or animals  
mpete Exhibitors of

grounds, the expense of transshipment being thus avoided. Stock will be unloaded near the grounds at the western entrance.

All articles sent by express will be delivered on the grounds without extra charges by the Express Companies.

#### PAYMENT OF PRIZES.

The Treasurer will be prepared to commence mailing cheques for the premiums, for all classes of exhibits, on Monday, the 15th of August.

Parties who may have prizes, "in kind," awarded to them are particularly requested to apply to the Secretary for them before leaving Winnipeg, or leave a written order with some person to receive them, stating the article for which prizes are claimed. Orders for such prizes will then be given. These orders must be endorsed, as they will be payable to *order*, not to *bearer*.

Orders for premiums, "in kind," not applied for as above will be forwarded by the Secretary, after the close of the Exhibition, to the address given on the entry forms.

All persons to whom prizes are awarded, and who do not receive the same as above, must apply to the Secretary in writing for payment thereof, on or before the 30th day of August 1892, or such prize will be forfeited.

#### JUDGES AND JUDGING.

The Judges will be appointed by the Board of Directors previous to the Exhibition, and will receive a circular informing them of the fact, and when to report at the office on the grounds.

No person will be allowed to act as Judge who is in any way interested in the articles to be examined.

Judges in the several departments will meet in the Board Room at the Secretary's Office on the grounds, presenting their circular of appointment, at one o'clock p. m. on Tuesday, July 26th.

Judges will please sign and hand in their lists of awards to the Secretary, as soon as possible, and make their more extended reports afterwards, making such recommendation as circumstances or their experience may suggest.

The Judges are particularly requested not to leave the grounds until they have ascertained from the Secretary that there are no protests against the awards in the classes they have judged.

In the absence of competition in any section, or if the stock or articles exhibited be of inferior quality, the Judges will award only such premiums as they think the articles deserving of. They will exercise their discretion as to whether they will award the first, second, or any premium.

It does not follow that because a prize is offered for any particular animal or article that it must be awarded, unless there is proper competition, or unless the exhibit is really of sufficient merit to warrant the award being made. **THE JUDGES ARE PARTICULARLY REQUESTED TO NOTE THIS FACT.**

In addition to the stated premiums offered for animals or articles enumerated in the List, the Judges may also distinguish such animals or articles as they consider deserving of notice, but which have not received prizes, by tickets with the words "Highly Commended" upon them. These tickets will not entitle the holder to any money payment.

Each award must be written in a plain, careful manner on the blank page opposite the number of entry, with the name of the exhibitor.

Exhibitors can ascertain from the Superintendents of the several departments when the Judges may be expected to examine their animals or articles. No complaint or appeal, based upon the statement that the Judges have overlooked animals or articles will, therefore, be considered by the Directors.

Any exhibitor lodging a protest must make it in WRITING, and it must be delivered to the Secretary or his assistant WITHIN FIVE HOURS OF THE CAUSE OF PROTEST; it must state plainly the cause of complaint or appeal, and must be accompanied by a deposit of \$5, which sum shall be forfeited to the Association if if the said protest is not sustained. The Directors, however, earnestly hope that exhibitors will not enter protests without the strongest grounds for so doing, as much annoyance and unpleasantness is often occasioned by protests of a frivolous nature.

The Judges are expected in the execution of their duties, to be careful to act with the most rigid impartiality, and make their entries in a clear and conspicuous manner: in all cases of doubt or difficulty referring freely to the Secretary, or to the Committee in charge of the Department.

No animal or article exhibited shall have about it any prize colors or cards until the awards have been made in their respective classes.

No persons shall be permitted in the Horse or Cattle Rings during the time of judging except the Judges, the grooms, or persons in charge of the animals members of the Association Committees and members of the press.

All prize cards which have been affixed by the Judges must be displayed during the Exhibition. Any infraction of this rule will incur the forfeiture of any premium awarded.

Any person who shall attempt to interfere with or influence the Judges while in the discharge of their duties, or who shall at any time, on the premises of the Association, use any contemptuous or abusive language to any Judge in consequence of any award made by him, shall forfeit his right to any premiums to which he might otherwise be entitled, and shall be excluded from exhibiting for the next year. Judges are particularly requested to immediately report any breach of this rule.

Upon the discovery of any fraud, deception, or dishonest practice, either in the preparation, ownership, or of any representation concerning any animal or article exhibited, which may have affected or have been intended to affect the decision of the Judges, the Directors have power to withhold the payment of any prize awarded, and may prohibit any such party or parties from exhibiting in any class for one or more years, and may also publish the names of such persons or not, as may be deemed most expedient.

#### PROCESS OF MANUFACTURE.

The Association hope that manufacturers who are in a position to assist in this feature will send some of the machines used by them in the manufacture of their products, and it is certain that they will be amply repaid for their trouble by the extra benefits they will receive from such an exhibit.

## MISCELLANEOUS.

If any persons, through ignorance of the regulations, shall bring things to the Exhibition without having entered them at the proper time, the same may in the discretion of the Superintendent in charge of the particular department be allowed to be brought upon the grounds, and so placed that they may be examined by the public, but shall not be classified, nor shall an official examination of them be made or premiums awarded.

Where space has been awarded to any exhibitor, the Directors reserve the right in case any such exhibitor shall fail to make or maintain a creditable display, to declare the space allotted to him, or any portion thereof, forfeited. Exhibitors must arrange their exhibits in as neat and attractive a manner as possible, and neatly fill up the space allotted to them, in fault of which the Directors may cancel their entries, and require the removal of the goods.

The Directors reserve the right to prescribe the dimensions and regulate the positions of all signs, and generally to direct the arrangement of articles on exhibition, so far as the same be necessary to secure harmony and an attractive appearance. Exhibitors will not be allowed to distribute about the grounds or buildings, hand-bills or other advertisements that may cause a nuisance. Neat cards for this purpose are recommended, as they are more likely to be kept by visitors and not thrown on the ground.

The contractor for the supply of refreshments at the restaurant, and all persons keeping refreshment stands, must lay in their supplies before 9 o'clock a. m., unless under special unavoidable circumstances, when permission must be obtained from the Secretary.

## FIRE AND POLICE PROTECTION.

The most careful and thorough arrangements possible have been made to guard against fire. The grounds are connected with all the Fire Stations by telephone; and with the precautions taken, it is believed the danger of such an occurrence is very remote; but exhibitors desiring insurance, must give the matter their personal attention.

An ample police force will be on duty night and day during the continuance of the Exhibition. But exhibitors are expected to exercise constant supervision over their articles on exhibition, as the Association will not be responsible for loss or damage by theft, fire, or otherwise. Small and valuable articles should be exhibited in show cases, which may be securely locked when desirable.

## INQUIRIES

As to the Exhibition and its arrangements, before the opening, should be addressed to the Secretary at Winnipeg. During the Exhibition, inquiries may be made at the Secretary's Office on the grounds; and every officer of the Association will, when applied to, either furnish the information sought, or refer the question to the proper officer.

## THE PRESS.

Members of the Press are cordially invited to the Exhibition. Ample accommodation will be provided for them, and all necessary information will be promptly

furnis  
previ  
will b

1.  
2.  
between  
be clea  
of visit  
3.  
fide own  
require  
4.  
section,  
ing in t  
Brood m  
5.  
require  
the judg  
exhibito  
6.  
or for ex  
duty.  
7.  
any exh  
8.  
allowed  
of the an  
ing, the  
EX  
horses o

Cer  
Clydesda  
Stud Bo

furnished. Editors are requested to notify the Secretary two or three weeks previous to the Exhibition, of the number and the names of representatives they will have on duty, in order that tickets for them may be forwarded.

## PRIZES.

### HORSES.

1. Stalls will not be allotted until horses arrive on the grounds.
2. All stall doors must be left open, so that visitors can inspect the horses between the hours of 9 a. m. and 12 noon, and 1 p. m. to 6 p. m. All stalls must be cleaned out before 7 a. m., so that refuse can be cleared away before the arrival of visitors.
3. All animals competing for prizes must be entered in the names of their bona fide owners, or their duly authorized agents : should doubts arise, the Judges may require affidavits of ownership from the exhibitor.
4. No horse will be allowed to enter or compete in more than one class or section, [except for the sweepstakes, for the special prizes, and for prizes for speed-ing in the horse ring.] Mares competing for sweepstakes must have been shewn as Brood mares or fillies.
5. Horses must be shown uncovered, and in such a manner as the Judges may require or allow ; and if exhibitors refuse to submit to the proper requirements of the judges, their animals will be ruled out. In the roadster and carriage classes, exhibitors should come prepared to show their horses in harness if required.
6. All horses competing must be brought out for the inspection of the Judges, or for exhibition, whenever called out by the official appointed to attend to that duty.
7. Non-compliance with any of the rules of the Association, on the part of any exhibitor or his employe, shall incur the forfeiture of any premium awarded.
8. Exhibitors who may desire to take their horses home at night will be allowed to do so on depositing \$5 with the Secretary as a guarantee for the return of the animal next morning. If the horse is not returned by 10 o'clock next morning, the amount deposited will be forfeited to the Association.

ENTRY FEES—Stallions 3 years old and upwards, \$1 50 each ; all other horses over one year \$1 00 each : all other horses one year and under, 50c. each.

#### Class 1. Clydesdales,

Certificates of registration in the Clydesdale Stud Book of Canada, or in the Clydesdale Stud Book of Great Britain and Ireland, or the American Clydesdale Stud Book, must be produced in this class.

SEC.	1st.	2nd.	3rd.
1 Stallion, four years old and upwards.....	\$40	\$30	\$20
2 Stallion, three years old .....	30	20	15
3 Stallion, two years old .....	20	15	10
4 Yearling Stallion .....	10	6	4
5 Stallion, any age, recorded in the Clydesdale Stud Book of Canada, special prize by the Clydesdale Horse Association of Canada .....	25		
6 Brood Mare with foal by side, or proof of having produced a foal this year.....	25	15	10
7 Three-year-old Filly .....	15	10	5
8 Two-year-old Filly. ....	10	8	5
9 Yearling Filly. ....	8	6	4
10 Foal.....	6	4	2
11 Sweepstakes Mare, any age .....	Silver Medal		

### Class 2.—Shires.

Certificates of registration in the English Shire Horse Stud Book, or American Shire Horse Stud Book, must be produced in this class.

SEC.	1st.	2nd.	3rd.
1 Stallion, four years old and upwards .....	\$30	\$25	\$15
2 Stallion, three years old .....	25	15	10
3 Stallion, two years old .....	20	15	10
4 Yearling Stallion .....	10	6	4
5 Sweepstakes Stallion, any age.....	Silver Medal		
6 Brood Mare with foal by side, or proof of having produced a foal this year.....	20	15	10
7 Three-year-old Filly .....	12	9	6
8 Two-year-old Filly.....	8	6	4
9 Yearling Filly.....	6	4	2
10 Foal of 1892, by any imported registered Shire Stallion, standing in Manitoba or the North-West Territories. 1st prize special by J. D. McGregor & Co., of Brandon .....	25	4	2
11 Mare, any age .....	Silver Medal		
12 Best Colt or Filly, one year old, by any imported Shire Stallion standing in Manitoba or the North-West Territories. Special prize by J. D. McGregor & Co., of Brandon .....	25		

### Class 3.—Percherons.

Certificates of registration in Percheron Stud Book of America, or in Percheron Stud Book of France, must be produced in this class.

SEC.	1st.	2nd.
1 Stallion, three years old and upwards.....	\$20	\$12
2 Stallion, three years old .....	15	8

1st.	2nd.	3rd.
\$40	\$30	\$20
30	20	15
20	15	10
10	6	1

25		
25	15	10
15	10	5
10	8	5
8	6	1
6	1	2

SEC.	1st.	2nd.
3 Yearling Stallion .....	8	4
4 Sweepstakes Stallion, any age.....Silver Medal		
5 Brood Mare with foal by side, or proof of having produced a foal this year.....	12	8
6 Three-year-old Filly.....	8	4
7 Two-year-old Filly.....	6	3
8 Yearling Filly .....	5	3
9 Foal .....	4	2
10 Brood Mare, any age, Sweepstakes .....	Silver Medal	

### Class 4.—Sweepstakes.

- 1 Stallion, any age, open to Classes 1, 2 and 3. Silver Medal, by Farmers Advocate, Winnipeg.

### Class 5.—Canadian Draft.

nd Book, or American  
this class.

1st.	2nd.	3rd.
\$30	\$25	\$15
25	15	10
20	15	10
10	6	1
20	15	10
12	9	6
8	6	1
6	1	2
25	1	2

SEC.	1st.	2nd.	3rd.
1 Brood Mare with foal by side or proof of having produced a foal this year. 1st prize by the Massey-Harris Co., [Ltd.], mower, value.....	\$70	\$10	\$6
2 Three-year-old Gelding or Filly, 1st prize by H. S. Wesbrook, plough, value.....	25	6	4
3 Two-year-old Gelding or Filly, 1st prize by H. S. Wesbrook, plough, value.....	25	6	4
4 Best yearling Gelding or Filly.....	6	5	3
5 Best Foal, 1st prize, Thos. Morrison, Winnipeg....	5	3	2
6 Sweepstakes Mare, any age.....silver Medal			
7 Heavy Draft Team [Geldings or mares], 1st prize by W. N. Johnson & Co., saddlery, value.....	30	15	10
8 Brood Mare with two of her colts bred since January 1890, Special by E. Boyce, Road Wagon, value.....	100		

### Class 6.—Agricultural and General Purpose Horses.

merica, or in Percheron  
this class.

1st.	2nd.
\$20	\$12
15	8

SEC.	1st.	2nd.	3rd.
1 Brood Mare with foal by side, or proof of having produced a foal this year, 1st prize Wheel and Whipple Harrow, by Watson Manufacturing Co., value .....	30	10	6
2 Three-year-old Gelding or Filly, 1st prize by Anderson & Calvert, plough, value. ....	25	6	4
3 Two-year-old Gelding or Filly, 1st prize by R. Cockrane & Co., Spring Tooth Harrow, value..	18	5	3
4 Yearling Gelding or Filly .....	5	3	2



SEC.	1st.	2nd.	3rd.
5 Foal.....	4	3	2
6 Sweepstake Mare, any age.....Silver Medal			
7 Best Team [Geldings or mares] in harness, 1st prize by Hon. Thos. Greenway .....	40		
2nd. prize by Ross & Maw, Road cart, value..		30	
8 Brood Mare with two of her colts, bred since January 1890. Special by Frost & Wood, Rake, value .....	33		

### Class 7.—Roadsters.

Stallions in this class must be registered in American Trotting Register and certificates produced.

SEC.	1st.	2nd.	3rd.
1 Stallion in harness, four-years-old and upwards....	\$20	\$15	\$10
2 Stallion, three-years-old .....	15	12	8
3 Stallion, two-year-old.....	12	8	6
4 Yearling Stallion .....	8	6	4
5 Stallion, any age, Sweepstakes.....Silver Medal			
6 Brood Mare, with foal by side or proof of having produced a foal this year .....	15	10	5
7 Three year old Gelding or Filly, 1st prize by John Moyses .....	10	6	4
8 Two-year-old Gelding or Filly.....	8	5	3
9 Yearling Gelding or Filly.....	6	4	2
10 Foal, 1st prize by David McGregor .....	5	3	2
11 Pair [Geldings or mares], in harness .....	25	15	10
12 Single [gelding or mare], in harness .....	15	10	5
13 Mare, any age, Sweepstakes.....Silver Medal			

### Class 8.—Carriage Horses.

Certificates of registration for Stallions in some recognized Stud Book, of pure bred horses must be produced.

SEC.	1st.	2nd.	3rd.
1 Stallion, four years and upwards, and 16 hands and over .....	\$20	\$15	\$10
2 Stallion four years old and upwards, under 16 hands .....	20	15	10
3 Stallion, three years old .....	15	12	8
4 Stallion, two years old .....	12	10	6
5 Yearling Stallion .....	8	6	4
6 Stallion, any age. Silver Cup by G. R. Thompson & Co .....	25		
7 Brood Mare with foal by side, or proof of having			

1st. 2nd. 3rd.  
4 3 2

40

30

33

Trotting Register and

1st. 2nd. 3rd.  
\$20 \$15 \$10  
15 12 8  
12 8 6  
8 6 4

15 10 5  
10 6 4  
8 5 3  
6 4 2  
5 3 2  
25 15 10  
15 10 5

es.

gnized Stud Book,  
l.

1st. 2nd. 3rd.  
\$20 \$15 \$10  
20 15 10  
15 12 8  
12 10 6  
8 6 4  
25

SEC.	1st.	2nd.	3rd.
produced a foal this year . . . . .	15	10	5
8 Three year old Gelding or Filly. 1st prize by Sibley & Lewis . . . . .	10	6	4
9 Yearling or Filly . . . . .	6	1	3
10 Foal. 1st prize by David McGregor . . . . .	5	3	2
11 Mare, any age, Sweepstakes . . . . . Silver Medal			
12 Pair of matched Geldings or Mares in harness, 16 hands or over. 1st prize by S. A. Rowbotham. . . . .	25	15	10
13 Pair of matched Geldings or Mares in harness 15½ hands and under 16, 1st prize by Caruthers & Brock . . . . .	20	15	10
14 Gelding or Mare in harness 15½ hands and over . . . . .	15	10	5

### Class 9.—Thoroughbreds.

Certificates of registration in Stud Book of Great Britain, American Stud Book, or Stud Book of France, must be produced in this class.

SEC.	1st	2nd.
1 Stallion, four years old and upwards, 1st prize by Robt. Young, Winnipeg . . . . .	\$20	\$15
2 Three year old Stallion . . . . .	15	10
3 Two year old Stallion . . . . .	15	10
4 Yearling Stallion . . . . .	5	3
5 Stallion, any age, sweepstakes . . . . . Silver Medal		
6 Brood Mare, any age . . . . . Diploma and	25	
7 Brood Mare with foal by side, or evidence of having produced a foal this year . . . . .	15	10
8 Three year old Filly . . . . .	7	5
9 Two year old Filly . . . . .	7	5
10 One year old Filly . . . . .	5	3
11 Foal . . . . .	4	2
12 Mare, any age, sweepstakes . . . . . Silver Medal		

### Class 10.—Saddle Horses.

SEC.	1st.	2nd.	3r
1 Saddle Horse, mare or gelding, heavy weight, 16 hands or over . . . . .	\$10	\$8	\$6
2 Saddle Horse, mare or gelding, under 16 hands . . . . .	10	8	6
3 Ladies' Saddle Horse, ridden by a lady, 1st prize, Ladies' Saddle, by W. A. Peirce . . . . . value	25	8	6

## Class 11.—Ponies (under 13 hands.)

SEC.	1st.	2nd.
1 Pair, in harness .....	\$10	\$5
2 Pony, in harness .....	6	3
3 Saddle Pony .....	6	3

**CATTLE.**

Any animal not having actually attained its fourth birthday, will be considered a three year old; not having attained the third, considered a two year old; this principle to apply in all cases where the terms three year old, two year old and one year old are used.

Cows must be giving milk at the time of the Exhibition, or show signs of being well gone in calf, or have raised one this year.

No animals may compete in more than one class or division, except for the herd prizes in the class to which they belong, and any special prizes offered. No entry fee will be charged for herds, but animals competing in herds must have competed in some other section of the class.

All animals will be shown in the rings, and exhibitors must be ready to bring them out when called for.

Entry Fees—Bulls, 3 years old and upwards, \$1 each; other cattle over one year, 50c each; cattle under one year, 25c each.

## Class 12.—Shorthorns.

Certificates of registration in Dominion Short Horn Herd Book, American Short Horn Herd Book or Coates' Herd Book of England, will be required in this class.

SEC.	1st.	2nd.	3rd.
1 Bull, three years old and upwards .....	\$25	\$15	\$10
2 Bull, two years old .....	25	15	10
3 Bull, one year old .....	15	10	5
4 Bull Calf, under one year .....	12	8	4
5 Bull, Manitoba bred, any age .....	10	5	
6 Bull of any age .....	Diploma		
7 Cow, four years old and upwards .....	20	15	10
8 Cow, three years old .....	15	12	8
9 Heifer, two-year-old .....	10	8	4
10 Heifer, one-year-old .....	10	8	4
11 Heifer Calf, under one year .....	8	6	3
12 Herd, bull and four females owned by one exhibitor .....	20		

ands.)

	1st.	2nd.
.....	\$10	\$5
.....	6	3
.....	6	3

SEC.	1st.	2nd.	3rd.
13 Two Females, Manitoba bred prior to 1892.....	10	5	
14 Bull, three years old. Special by W. S. Lister, Middle Church .....	25		

### Class 13.—Polled Angus.

Certificates of registration in Polled Herd Book of Aberdeen Angus of Scotland or the American Herd Book of Aberdeen Angus, will be required in this class.

day, will be considered  
d a two year old; this  
old, two year old and

hibition, or show signs of

division, except for the  
cial prizes offered. No  
ing in herds must have

s must be ready to bring

; other cattle over one

s.

n Herd Book, American  
l, will be required in this

1st.	2nd.	3rd.
\$25	\$15	\$10
25	15	10
15	10	5
12	8	4
10	5	

20	15	10
15	12	8
10	8	4
10	8	4
8	6	3
20		

SEC.	1st.	2nd.
1 Bull, three years old and upwards.....	\$20	\$15
2 Bull, two years old .....	20	15
3 Bull, one year old .....	15	10
4 Bull Calf.....	10	6
5 Bull, any age.....	Diploma	
6 Cow, four years old and upwards.....	15	10
7 Cow, three years old .....	15	10
8 Heifer, two years old.....	10	6
9 Heifer, one year old.....	8	5
10 Heifer Calf .....	6	4
11 Herd of bulls and four females .....	20	

### Class 14.—Galloways.

Certificates of registration in Galloway Herd Book of Scotland or American Galloway Herd Book will be required in this class.

SEC.	1st.	2nd.
1 Bull, three years old and upwards....	\$20	\$15
2 Bull, two years old.....	20	15
3 Bull, one year old .....	15	10
4 Bull Calf .....	10	6
5 Bull of any age .....	Diploma	
6 Cow, four years old and upwards.....	15	10
7 Cow, three years old .....	15	10
8 Heifer, two years old....	10	6
9 Heifer, one year old.....	8	5
10 Heifer Calf, under one year .....	6	4
11 Herd, consisting of bull and four females....	20	

### Class 15.—Herefords.

Certificates of registration in English Herd Book of Hereford Cattle or American Hereford Record. will be required in this class.

SEC.	1st.	2nd.
1 Bull, three years old and over. ....	\$20	\$15
2 Bull, two years old .....	20	15

SEC.	1st.	2nd.
3 Yearling Bull .....	15	10
4 Bull Calf .....	10	6
5 Bull, any age.....	Diploma	
6 Cow, four years old and upwards .....	15	10
7 Cow, three years old .....	15	10
8 Heifer, two years old .....	10	6
9 Heifer, one year old .....	8	5
10 Heifer Calf .....	6	1
11 Herd of bull and four females, over one year.....	20	

### Class 16.—Devons.

Certificates of registration in Daly's Herd Book of England, will be required in this class.

SEC.	1st.	2nd.
1 Bull, three years old and over .....	\$20	\$15
2 Bull, two years old .....	20	15
3 Bull, one year old.....	15	10
4 Bull Calf .....	10	6
5 Bull, any age.....	Diploma	
6 Cow, four years old and upwards .....	15	10
7 Cow, three years old .....	15	10
8 Heifer, two years old.....	15	10
9 Heifer, one year old .....	8	5
10 Heifer Calf .....	6	1
11 Best Herd of bull and four females, over one year old .....	20	

### Class 17.—Holsteins.

Certificates of registration in either the Holstein-Friesian Herd Book of Canada, the Holstein-Friesian Herd Book of America, the American Branch of the North Holland Herd Book, the Netherland Herd Book, the Friesian Friesian Herd Book, or the North Holland Herd Book, will be required in this class.

SEC.	1st.	2nd.
1 Bull, three years old and over .....	\$20	\$15
2 Bull, two years old .....	20	15
3 Bull, one year old .....	15	10
4 Bull Calf .....	10	6
5 Bull, any age.....	Diploma	
6 Cow, four years old and upwards .....	15	10
7 Cow, three years old.....	15	10
8 Heifer, two years old.....	15	10

	1st.	2nd.
.....	15	10
.....	10	6
Diploma		
.....	15	10
.....	15	10
.....	10	6
.....	8	5
.....	6	4
.....	20	

of England,

	1st.	2nd.
.....	\$20	\$15
.....	20	15
.....	15	10
.....	10	6
Diploma		
.....	15	10
.....	15	10
.....	15	10
.....	8	5
.....	6	4
d .....	20	

Friesian Herd Book of  
the American Branch  
Herd Book, the Friesian  
will be required in this

	1st.	2nd.
.....	\$20	\$15
.....	20	15
.....	15	10
.....	10	6
Diploma		
.....	15	10
.....	15	10
.....	15	10

SEC.	1st.	2nd.
9 Heifer, one year old .....	8	5
10 Heifer Calf .....	6	4
11 Best Herd of Bull and four females, over one year old .....	20	

### Class 18.—Jerseys and Guernseys.

Certificates of registration in the Herd Register of the American Jersey Cattle Club, the Jersey Herd Book of the Isle of Jersey, the Herd Register of the American Guernsey Cattle Club, the General Herd Book of the Island of Guernsey or the Herd Book of the Royal Agricultural Society will be required in this class.

SEC.	1st.	2nd.
1 Bull, three years old and upwards.....	\$20	\$15
2 Bull, two years old .....	20	10
3 Bull, one year old.....	15	10
4 Bull Calf .....	10	6
5 Bull, any age.....	Diploma	
6 Cow, four years old and upwards .....	15	10
7 Cow, three years old.....	15	10
8 Heifer, two years old.....	10	6
9 Heifer, one year old.....	8	5
10 Heifer Calf .....	6	4
11 Herd of bull and four females, over one year old.....	20	

### Class 19.—Ayrshires.

Certificates of registration in the Ayrshire Herd Book of Great Britain, the Canadian Ayrshire Herd Record, the Dominion Ayrshire Cattle Herd Book or the American Ayrshire Record will be required in this class.

SEC.	1st.	2nd.
1 Bull, three years old and upwards.....	\$20	\$15
2 Bull, two years old .....	20	15
3 Bull, one year old .....	15	10
4 Bull Calf .....	10	6
5 Bull, any age.....	Diploma	
6 Cow, four years old and upwards .....	15	10
7 Cow, three years old .....	15	10
8 Heifer, two years old.....	10	6
9 Heifer, one year old.....	8	5
10 Heifer Calf.....	6	4
11 Herd of bull and four females.....	20	

### Class 20.—Special Sweepstakes, Open to Dairy Breeds.

Mr. Acton Burrows, President of the Nor'-West Farmer Printing and Publishing Co., Winnipeg, and representative of the Manitoba Dairy Association on

the Directorate of the Winnipeg Industrial Exhibition, offers a Silver Cup, value \$50.00 for the best herd of Bull and four Females of Dairy Breeds, Holsteins, Jerseys, Guernseys or Ayrshires, owned by one exhibitor, at least three of the Females to be over two years old.

### Class 21.—West Highland.

SEC.	1st.	2nd.
1 Bull, three years old and upwards .....	\$15	\$10
2 Bull, two years old .....	12	8
3 Bull, one year old .....	8	5
4 Cow, three years old and upwards .....	12	8
5 Heifer, two years old .....	10	6
6 Heifer, one year old .....	8	5
7 Heifer Calf .....	6	3
8 Herd of bull and four females .....	20	

### Class 22.—Grade Cattle.

SEC.	1st.	2nd.
1 Cow, four years old and over, Beef breeds .....	\$12	\$8
2 Cow, three years old, Beef breeds .....	12	8
3 Two years old Heifer .....	8	6
4 Yearling Heifer .....	6	4
5 Heifer Calf .....	5	3
6 Pair of Working Oxen .....	12	8
7 Two Steers, three years old .....	10	8
8 Two Steers, two years old .....	10	8
9 Dairy Cow; 1st prize by Banfield Carpet Store, Winnipeg, carpet, value .....	15	8
10 Herd of 5 Females. 1st Special by Hon. Thos. Greenway ..	35	
2nd prize by Geo. D. Wood & Co., gun or rifle, value .....		

### Class 23.—Fat Cattle, Any Breed.

SEC.	1st.	2nd.	3rd.
1 Ox or Steer three years old and over, 1st prize platform scale by E. & C. Gurney Co., value ..	\$30	\$10	\$5
2 Steer two years old and under three .....	15	10	5
3 Fat Cow or Heifer .....	15	8	4
4 Best three Calves, any breed, 1 Ton Oil Cake, special by Body & Noakes .....	24		

Silver Cup, value  
Breeds, Holsteins,  
least three of the

## SHEEP.

In making entries the owners name and address in full, and the age of the animal must be given. Judges are expected to be guided in their awards more by purity of blood than size of sheep and quantity of wool.

Ewes, two shears and over, in all classes except the fat sheep, must have produced lambs the present season.

If required, exhibitors must make a statutory declaration that the animals are of the ages stated by them.

Entry Fee—Sheep, per head, 25c.

### Class 24.—Cotswolds.

	1st.	2nd.
...	\$15	\$10
...	12	8
...	8	5
...	12	8
...	10	6
...	8	5
...	6	3
...	20	

SEC.	1st.	2nd.	3rd.
1 Ram, two shears or over .....	\$10	\$5	\$3
2 Ram, shearling .....	8	4	2
3 Ram Lamb .....	6	3	2
4 Two Ewes, aged .....	10	5	3
5 Two Ewes, shearlings .....	8	4	2
6 Two Ewe Lambs .....	6	3	
7 Pen : Ram any age, two Ewes any age, and two Ewe Lambs .....	10		

### Class 25.—Leicesters.

	1st.	2nd.
...	\$12	\$8
...	12	8
...	8	6
...	6	4
...	5	3
...	12	8
...	10	8
...	10	8
...	15	8
...	35	

SEC.	1st.	2nd.	3rd.
1 Ram, two shears or over .....	\$10	\$5	\$3
2 Ram, shearling .....	8	4	2
3 Ram Lamb .....	6	3	2
4 Two Ewes, aged .....	10	5	3
5 Two Ewes, shearlings .....	8	4	2
6 Two Ewe Lambs .....	6	3	2
7 Pen : Ram, any age, two Ewes any age, and two Ewe Lambs .....	10		

reed.

### Class 26.—Southdowns.

	1st.	2nd.	3rd.
30	\$10	\$5	
15	10	5	
15	8	4	
24			

SEC.	1st.	2nd.	3rd.
1 Ram, two shears or over .....	\$10	\$5	\$3
2 Ram, shearling .....	8	4	2
3 Ram Lamb .....	6	3	2
4 Two Ewes, aged .....	10	5	3
5 Two Ewes, shearlings .....	8	4	2
6 Two Ewe Lambs .....	6	3	2
7 Pen : Ram, any age, two Ewes any age, and two Ewe Lambs .....	10		



## Class 27.—Shropshire Downs.

SEC.	1st.	2nd.	3rd.
1 Ram, two shears or over.....	\$10	\$5	\$3
2 Ram, shearling.....	8	4	2
3 Ram Lamb.....	6	3	2
4 Two Ewes, aged.....	10	5	3
5 Two Ewes, shearlings.....	8	4	2
6 Two Ewe Lambs.....	6	3	2
7 Pen : Ram, any age, two Ewes any age, and two Ewe Lambs.....	10		

## Class 28.—Merinos.

SEC.	1st.	2nd.	3rd.
1 Ram, two shears or over .....	\$10	\$5	\$3
2 Ram, shearling.....	8	4	2
3 Ram Lamb.....	6	3	2
4 Two Ewes, aged.....	10	5	3
5 Two Ewes, shearlings.....	8	4	2
6 Two Ewe Lambs.....	6	3	2
7 Pen : Ram, any age; two Ewes, any age, and two Ewe Lambs.....	10		

## Class 29 —Any other variety of Pure Bred Sheep.

SEC.	1st.	2nd.	3rd.
1 Ram, two shears and over .....	\$10	\$5	\$3
2 Ram, Shearlings.....	8	4	2
3 Ram Lamb .....	6	3	2
4 Two Ewes, aged.....	10	5	3
5 Two Ewes, Shearling.....	8	4	2
6 Two Ewe Lambs.....	6	3	2
7 Pen : Ram, any age; two Ewe Lambs, and two Ewes, any age.....	10		

## Class 30.—Fat Sheep.

Sheep shown in any other class cannot compete as fat sheep.

SEC.	1st.	2nd.	3rd.
1 Two fat Wethers, two Shears or over.....	\$10	\$5	\$3
2 Two fat Wethers, shearlings.....	10	5	3
3 Two fat Ewes, two shears or over.....	10	5	3
4 Two fat Ewes, shearlings .....	10	5	3

### Class 31.

Sweepstakes Pen: Ram, any age, two Ewes, any age, and two Ewe Lambs. Open to all pure breeds. Special by Hon. Thos. Greenway, \$25.00 and Silver Medal by Farmer's Advocate.

## PIGS.

The owner's name and address in full, with precise age of animal, must be given when making entries.

If required exhibitors must make a statutory declaration that their animals are of the ages stated by them. Judges are expected to see that the animals are entered in their proper section.

### Class 32.—Berkshires.

Certificates of registration required. Entry fee for Pigs, per head, 25c.

SEC.	1st.	2nd.	3rd.
1 Boar, one year old or over .....	\$10	\$6	\$4
2 Boar, under one year .....	10	6	4
3 Breeding Sow, one year and over .....	8	5	3
4 Sow, under one year .....	8	5	3
5 Sow, any age .....	Diploma		
6 Boar, any age .....	Diploma		
7 Best Sow with litter of pigs .....	10	5	4

8 Best recorded Berkshire Sow and litter of not less than five recorded pigs, under six months of age, not less than three competitors, the competing animals to be recorded in the American Berkshire Record, prior to date of entry at the Exhibition, and that list of such entries be furnished the Secretary of American Berkshire Association at the close of the Exhibition. Special prize by American Berkshire Association; First ten volumes of American Berkshire Record, valued at \$50.00.

### Class 33.—Yorkshires.

SEC.	1st.	2nd.	3rd.
1 Boar, one year or over .....	\$10	\$6	\$4
2 Boar, under one year .....	10	6	4
3 Breeding Sow, one year and over .....	8	5	3
4 Sow, under one year .....	8	5	3
5 Best Sow with litter of pigs .....	8	5	3

## Class 34.—Chester Whites,

SEC.	1st.	2nd.	3rd.
1 Boar, one year or over .....	\$10	\$6	\$4
2 Boar, under one year.....	10	6	4
3 Breeding Sow, one year or over .....	8	5	3
4 Sow, under one year .....	8	5	3
5 Sow, with litter of pigs.....	8	5	3

## Class 35.—Other Large Breeds of Pure Bred Pigs.

SEC.	1st.	2nd.	3rd.
1 Boar, one year or over .....	\$10	\$6	\$4
2 Boar, under one year.....	10	6	4
3 Breeding Sow, one year or over ..	8	5	3
4 Sow, under one year.....	8	5	3
5 Sow with litter of pigs.....	10	6	4

## Class 36.—Essex, Suffolk, or any other Small Breed.

SEC.	1st.	2nd.	3rd.
1 Boar, one year or over.....	\$8	\$5	\$3
2 Boar, under one year.....	8	5	3
3 Breeding Sow, one year or over ..	6	4	3
4 Sow, under one year .....	6	4	3
5 Best Sow with litter of pigs .....	8	5	3

## Class 37.

1 Fat pig, one year old or over .....	\$8	\$5
2 Fat pig, under one year.....	6	4
Special by J. V. Griffin & Co., Pork-packers, Winnipeg, for the best pen of 4 fat pigs fed by a Manitoba or N.W.T. farmer; any breed, not more than 12 months old .....		
	25	

**POULTRY.**

In making entries, exhibitors must be careful to state the number of the class in which they are to be entered, as fowls or chickens.

All specimens, except games and game bantams, must be exhibited in their natural condition.

The card of the Association will be placed upon each coop, cage or specimen, giving the number and variety of the exhibit; but no other card will be allowed on any coop, cage or specimen, until the Judges have completed their awards.

Coops, except in the ornamental class, will be provided, and the poultry fed and taken care of at the expense of the Association.

Entries for breeding pens must be separate birds from those exhibited in other sections.

Entry Fee--For Poultry, including coops, feed and attendance, per pair, 30c.

### Class 38.—Fowls.

SEC.		1st.	2nd.	3rd.
1	Andalusians .....	\$2 50	\$1 50	\$1
2	Pair Brahmas, Light .....	2 50	1 50	1
3	" " Dark .....	2 50	1 50	1
4	" Cochins, Buff .....	2 50	1 50	1
5	" " Black .....	2 50	1 50	1
6	" " Partridge .....	2 50	1 50	1
7	" " White .....	2 50	1 50	1
8	" Dorkings, any breed .....	2 50	1 50	1
9	" Game, Black or Brown } " " Breasted Red }	2 50	1 50	1
10	" " Pile .....	2 50	1 50	1
11	" " Duckwing .....	2 50	1 50	1
12	" " Indian .....	2 50	1 50	1
13	" Houdans .....	2 50	1 50	1
14	" Hamburgs, Golden Pencilled .....	2 50	1 50	1
15	" " Silver " .....	2 50	1 50	1
16	" " Golden Spangled .....	2 50	1 50	1
17	" " Silver " .....	2 50	1 50	1
18	" Javas .....	2 50	1 50	1
19	" Langshaws, Black .....	2 50	1 50	1
20	" " White .....	2 50	1 50	1
21	" Leghorns, single comb, White .....	2 50	1 50	1
22	" " " " Brown .....	2 50	1 50	1
23	" " Rose " White .....	2 50	1 50	1
24	" " " " Brown .....	2 50	1 50	1
25	" " Any other variety .....	2 50	1 50	1
26	" Minorcas, Black .....	2 50	1 50	1
27	" " White .....	2 50	1 50	1
28	" Plymouth Rocks, Barred .....	2 50	1 50	1
29	" " " White .....	2 50	1 50	1
30	" Pea Fowls .....	2 50	1 50	1
31	" Wyandottes Golden Laced .....	2 50	1 50	1
32	" " Silver Laced .....	2 50	1 50	1
33	" " Black .....	2 50	1 50	1
34	" Guinea Fowls .....	2 50	1 50	1
35	" Bantams, 'Buff' Pekin .....	2 50	1 50	1
36	" " Pekin and other variety .....	2 50	1 50	1
37	" " Black African .....	2 50	1 50	1
38	" " Seabright .....	2 50	1 50	1
39	" " Game .....	2 50	1 50	1
40	" " Japanese .....	2 50	1 50	1
41	" " Rose Comb .....	2 50	1 50	1

## Class 39.—Chickens of 1892.

Seq.		1st.	2nd.	3rd.
1	Andalusians .....	\$2 50	\$1 50	\$1
2	Pair Brahmas, Light .....	2 50	1 50	1
3	Pair " Dark .....	2 50	1 50	1
4	Pair Cochins, Buff .....	2 50	1 50	1
5	Pair " Black .....	2 50	1 50	1
6	Pair " Partridge .....	2 50	1 50	1
7	Pair " White .....	2 50	1 50	1
8	Pair Dorkings, any breed .....	2 50	1 50	1
9	Pair Games, Black or Brown } " Breasted Red }	2 50	1 50	1
10	Pair " Pile .....	2 50	1 50	1
11	Pair " Duckwing .....	2 50	1 50	1
12	Pair " Indian .....	2 50	1 50	1
13	Pair Houdans .....	2 50	1 50	1
14	Pair Hamburgs, Golden Pencilled .....	2 50	1 50	1
15	Pair " Silver Pencilled .....	2 50	1 50	1
16	Pair " Golden Spangled .....	2 50	1 50	1
17	Pair " Silver Spangled .....	2 50	1 50	1
18	Pair Javas .....	2 50	1 50	1
19	Pair Langhsaws, Black .....	2 50	1 50	1
20	Pair " White .....	2 50	1 50	1
21	Pair Leghorns, single comb, White .....	2 50	1 50	1
22	Pair " " Brown .....	2 50	1 50	1
23	Pair " Rose " White .....	2 50	1 50	1
24	Pair " " " Brown .....	2 50	1 50	1
25	Pair " Any other variety .....	2 50	1 50	1
26	Pair Minorcas, Black .....	2 50	1 50	1
27	Pair " White .....	2 50	1 50	1
28	Pair Plymouth Rocks, Barred .....	2 50	1 50	1
29	Pair " " White .....	2 50	1 50	1
30	Pair Pea Fowls .....	2 50	1 50	1
31	Pair Wyandottes, Golden Laced .....	2 50	1 50	1
32	Pair " Silver Laced .....	2 50	1 50	1
33	Pair " Black .....	2 50	1 50	1
34	Pair Guinea Fowls .....	2 50	1 50	1
35	Pair Bantams, Buff Pekin .....	2 50	1 50	1
36	Pair " Pekin any other variety .....	2 50	1 50	1
37	Pair " Black African .....	2 50	1 50	1
38	Pair " Seabright .....	2 50	1 50	1
39	Pair " Game .....	2 50	1 50	1
40	Pair " Japanese .....	2 50	1 50	1
41	Pair " Rose Comb .....	2 50	1 50	1

Class.—40.

SEC.	1st.
1 Best breeding pen (any variety). Special, Silver Cup by H. A. Chadwick, value .....	\$25

Class 41.—Turkeys, Geese, Ducks.

SEC.	1st.	2nd.	3rd.
1 Turkeys, Bronze .....	\$3	\$2	\$1
2 " Holland White.....	3	2	1
3 " Black.....	3	2	1
4 " Slate .....	3	2	1
5 " Buff .....	3	2	1
6 Geese, Embden .....	3	2	1
7 " Toulouse .....	3	2	1
8 " China White.....	3	2	1
9 " China Brown.....	3	2	1
10 Ducks, Aylsbury .....	3	2	1
11 " Pekin .....	3	2	1
12 " Rouen.....	3	2	1
13 " Cayuga .....	3	2	1
14 " Muscovy .....	3	2	1
15 Turkeys, Bronze Poults chicks of 1892 .....	3	2	1
16 " Holland White Poults.....	3	2	1
17 " Black Poults.....	3	2	1
18 " Slate Poults .....	3	2	1
19 " Buff Poults .....	3	2	1
20 Geese, Embden goslings of 1892 .....	3	2	1
21 " Toulouse goslings of 1892.....	3	2	1
22 " China White goslings of 1892 .....	3	2	1
23 " China Brown goslings of 1892 .....	3	2	1
24 Ducks, Alesbury ducklings of 1892.....	3	2	1
25 " Pekin ducklings of 1892 .....	3	2	1
26 " Rouen ducklings of 1892.....	3	2	1
27 " Cayuga ducklings of 1892 .....	3	2	1
28 " Muscovy ducklings of 1892.....	3	2	1

Class 42.—Ornamental Pigeons.

SEC.	1st.	2nd.
1 Pair Black Carriers.....	\$1 50	1
2 Pair Dun Carriers .....	1 50	1
3 Pair Carriers, any other variety.....	1 50	1
4 Pair White Pouters .....	1 50	1
5 Pair Black or Blue Pied Pouters .....	1 50	1
6 Pair Red or yellow Pied Pouters.....	1 50	1
7 Pair Tumblers, short face.....	1 50	1

SEC.	1st.	2nd.
8 Pair Tumblers, any other variety . . . . .	1 50	1
9 Pair Jacobins, red and yellow . . . . .	1 50	1
10 Pair Jacobins, any other variety . . . . .	1 50	1
11 Pair Fantails, white . . . . .	1 50	1
12 Pair Fantails, any other variety . . . . .	1 50	1
13 Pair Barbs, black . . . . .	1 50	1
14 Pair Barbs, any other variety . . . . .	1 50	1
15 Pair Trumpeters, Russian . . . . .	1 50	1
16 Pair Trumpeters, any other variety . . . . .	1 50	1
17 Pair Archangels . . . . .	1 50	1
18 Swallows . . . . .	1 50	1
19 Pair Owls . . . . .	1 50	1

## RABBITS.

(Entry fee including coop, feed and attendance, per pair, 30c.)

### Class 43.

SEC.	1st.	2nd.
1 Pair Lop-eared Rabbits . . . . .	1 50	\$1
2 Common Rabbits . . . . .	1 50	1

## DOGS.

This Department is governed by the following rules :

- 1 The term "dog" where used in these rules is general in its application.
- 2 Dogs to be eligible for special prizes must in all cases be entered in their regular classes, and no dog eligible for special prizes can be withdrawn from competition unless it has been stated on entry blank, "Will not compete for Special prizes."
- 3 All entries in the dog class must be made on the special entry form provided, one of which is attached opposite this page.
- 4 The entry ticket for each dog must be carefully preserved. Any exhibitor wanting to take a dog out of the building at night will be required to show the ticket and deposit with the Dog Superintendent \$5.00 for each dog taken out, which will only be returned if the animal is brought back into the building by nine o'clock on the following morning.

5 No dog will be received unless supplied with a suitable collar and chain.  
 6 The judging will commence on Tuesday July 26th, at two o'clock promptly. During the judging no dog shall be taken from its stall, except by order of the judge, and if any dog is not found in its stall when called for by the judge, the judging will proceed without it. This rule will be rigidly enforced. Owners are requested to be near their dogs and when their class is called to bring their animals before the judge. In the absence of the owner attendants will take the dogs before the judge.

7 In the list of prizes the term "dog" means a male specimen whelped prior to August 1891. "Bitch" means a female specimen whelped prior to August, 1891.

Entry Fee 50c for each animal.

### Class 44.—Dogs.

SEC.	1st.
1 Mastiff dog .....	\$5
2 Mastiff bitch.....	5
3 St. Bernard dog—Either rough or smooth coated.....	5
4 St. Bernard bitch—Either rough or smooth coated .....	5
5 Newfoundland dog.....	5
6 Newfoundland bitch .....	5
7 Deerhound, dog or bitch .....	5
8 Great Danes, dog or bitch.....	5
9 Greyhounds, dog or bitch.....	5
10 Pointer, dog.....	5
11 Pointer, bitch.....	5
12 English Setter, dog .....	5
13 English Setter, bitch.....	5
14 Gordon Setter, dog .....	5
15 Gordon Setter, bitch.....	5
16 Irish Setter, dog.....	5
17 Irish Setter, bitch .....	5
18 Kennel of Foxhounds, not less than two couples .....	5
19 Irish Water Spaniel, dog or bitch .....	5
20 Cocker Spaniel, dog or bitch.....	5
21 English Retriever, dog or bitch in this class curly or smooth coated....	5
22 Collie, dog .....	5
23 Collie, bitch .....	5
24 Bull Dog, dog or bitch .....	3
25 Fox Terriers, smooth or wire haired, dog or bitch.....	3
26 Pugs, dog or bitch.....	3
27 Toy Dog, dog or bitch .....	3
28 Kennel of Sporting Dogs, not less than four specimens—Either Setters, Pointers or Retrievers.....	Diploma
29 Kennel of Non-Sporting Dogs, not less than four specimens—this includes all kinds of dogs except those mentioned in section 28. .	Diploma



## DAIRY PRODUCTS.

### Class—46.

Entry Fee—For each Section, 25 cents.

An owner of more than one creamery or cheese factory may make a separate entry in any section for each of his creameries or cheese factories, the entry to be made in the joint names of the owner and maker in each case, but only one entry to be allowed to each maker in one section.

### Cheese.

One of each set of prize cheeses will be cut to properly show it to visitors.

SEC.	1st.	2nd.	3rd.
1 Cheese, Best three factory (colored), from 50 to 60 lbs each made in 1892 .....	\$30	\$25	\$15
2 Cheese, best three factory (white) from 50 to 60 lbs each made in 1892 .....	30	25	15
3 Cheese, best three, Stilton .....	10	5	
4 Home made Cream Cheese .....	6	3	

### Butter.

Butter will be judged on the following points, the figures set opposite indicating the maximum per cent., the total of all such maximums being 100: Flavor, 45; Grain 25; Color 15; Salting 10; Packing 5; Total 100. The general standard of color will be "June Grass Butter."

5 Three firkins, not less than 100 lbs in the aggregate, made at any creamery .....	30	25	15
6 25 lbs Creamery, in form of rolls or prints .....	20	15	10
7 Firkin farm dairy, not less than 50 lbs; Special prize by A. Macdonald & Co., Winnipeg. Exhibits taking prizes to be the property of the donors .....	50	40	25
8 Crock Farm Dairy, 20 lbs; 1st prize by H. G. McMicken, General Agent Great Northern Railway, Winnipeg, \$20 or a 1000 miles ticket on Great Northern Railway at option of winner. Exhibit winning 1st prize to become the property of the donor .....	20	10	5
9 Basket, 1 lb. prints or rolls, Farm Dairy, not less than 10 lbs .....	20	10	5
10 Granular Butter, Creamery or Dairy, not less than 3 lbs. in brine .....	15	10	5

SEC.	1st.	2nd.	3rd.
11 Butter for export, to be judged by quality of butter and suitability of package for the intended market in packages of any size from 1 to 5 lbs. First prize by Mr. J. L. Bucknall, commission merchant, Winnipeg .....	25	15	
12 Butter made up for table use not more than 5 lbs, to be judged by quality and appearance. 1st. prize by R. D. Templeton & Co. Exhibit winning prize to become property of donor.....	10	5	3
13 Plate of Prints, 1/2 lb. each, not less than 5 prints. Ford & Lowe, Winnipeg. Groceries, value ... Exhibit winning 1st prize to become property of the donors. 2nd prize, Two Fibre Ware Churns by McKenzie, Powis & Co., value .....	15	6	
14 Sweepstakes, best butter on exhibition in packages rolls or prints.....Diploma.			
15 Sweepstakes, for best Butter on exhibition in packages, rolls or prints from farm dairy only. Special by E. B. Eddy Co. Full set Indurated Fibre Ware (27 pieces)..... Value	20		

## AGRICULTURAL PRODUCTIONS.

Entry Fee—25c each entry. All exhibits in this class must be of the growth of 1891.

### Class 47.—Field Grains, Flour, Etc.

SEC.	1st.	2nd.	3rd.
1 Twenty-five bushels Red Fife Wheat, grown in Manitoba, to be judged by its purity and freedom from mixture, and to be entirely free from cockle or noxious weed seeds. The prize to be awarded to the actual grower of the wheat. Wheat taking prize to become property of donor, Ogilvie Milling Co .....			\$125
2 Red Fife Wheat, 5 bushels. Wheat taking 1st prize to become the property of the donor, The Canadian Pacific Railway.—2nd prize by Martin, Mitchell & Co., and 3rd prize by H. Crowe & Co.	30	20	10
3 Red Fife Wheat, 2 bushels. Prizes by McBean Bros .....	12	8	5

SEC.	1st.	2nd.	3rd.
4 White Fife, 5 bushels. Wheat taking 1st prize to become the property of the donors, the Canadian Pacific Railway Co. 2nd prize by Dines & Cleve-3rd prize by Martin, Mitchell & Co.....	20	10	5
5 Ladoga Wheat, two bushels. Wheat taking 1st prize to become the property of the donors, The Canadian Pacific Railway Co.....	10	5	3
6 Any other variety of wheat, 2 bushels. Wheat taking 1st prize to become the property of the donors, The Canadian Pacific Railway Co.....	10	5	3
7 Six rowed barley, 2 bushels. Barley taking 1st prize to become the property of the donors, the Canadian Pacific Railway Co.....	15	8	5
8 Two-rowed barley, 2 bushels. Barley taking 1st prize to become the property of the donors, the Canadian Pacific Railway Co.....	15	8	5
9 Black barley, 2 bushels. Special prize by Canadian Pacific Railway Co. Exhibit taking 1st prize to become the property of the donors.....	10	5	3
10 Rye, 2 bushels. Rye taking 1st prize to become the property of the donors, the Canadian Pacific Railway Company.....	10	5	3
11 10 bushels White Milling Oats. Special prize by Mr. Stephen Nairn. Exhibit taking 1st prize to become property of the donor. The winner of this prize will not be eligible to take prize in section 12.....	Cash	25	15
11a 10 bushels American Banner Oats, Special prize by W. G. Douglas, Winnipeg. Exhibit taking prize to become property of the donor.....	15		
12 Oats—White, 5 bushels. Oats taking 1st prize to become the property of the donor, the Canadian Pacific Railway Company. 2nd prize by Mr. N. Bawlf, Winnipeg.....	15	10	5
13 Oats, black, 1st prize by Mr. N. Bawlf, Winnipeg .	10	5	3
14 Flax seed, 2 bushels, 1st prize by D. H. McMillan & Co.....	10	5	3
15 Buckwheat, 1 bushel.....	5	3	2
16 Peas, large, 2 bushels, 1st by S. P. Clarke & Co....	10	5	3
17 Peas, small, 2 bushels.....	10	5	3
18 White beans, 1 bushel.....	5	3	2
19 Field beans, (Horse) 1 bushel.....	5	3	2
20 Corn, yellow, 12 ears.....	3	2	1
21 Flour made from Red Fife Wheat, 100 lbs.....			
.....Diploma			
22 Oatmeal, best exhibit, one bag of each grade.....			
.....Diploma			

SEC.

23

24

as be  
fibres

SEC.

1 B

2 Ca

3 Ca

4 Ca

5 K

6 M

7 M

8 M

9 M

10 Pe

11 Pe

12 Pe

13 Pe

14 Pe

15 Pe

16 Pe

17 Pe

18 Pe

19 Pe

20 Pe

21 Pe

22 Pu

23 Sq

24 Tu

25 Tu

26 Tu

3rd.	SEC.	1st.	2nd.	3rd.
	23	Best 5 bushels two-rowed barley, special prize by E. L. Drewry. Exhibit taking prize to become property of donor.....		
5				25
3	24	Best 6 bushels six-rowed barley, special prize by E. L. Drewry. Exhibit taking prize to become property of donor.....		
				25

### Class 48.—Field Roots.

Fee—25c. for first 5 entry lot. Over 5 entries, 50c. for lot.

Exhibits in this class must be certified to on the entry paper, by the exhibitor, as being of field cultu.e. Roots must be cleaned and topped, and surplus roots and fibres removed, before being taken to the building.

SEC.	1st.	2nd.	3rd.
1	Beets, Sugar, 6.....		
	\$3	2	1
2	Carrots, Long Red, 6.....		
	3	2	1
3	Carrots, White, 6.....		
	3	2	1
4	Carrots, Orange, 6.....		
	3	2	1
5	Kohl Rabi, 6.....		
	3	2	1
6	Mangold Wurtzel, Long Red, 6.....		
	3	2	1
7	Mangold Wurtzel, Long Yellow, 6.....		
	3	2	1
8	Mangold Wurtzel, Yellow Globe, 6.....		
	3	2	1
9	Mangold Wurtzel, Red Globe, 6.....		
	3	2	1
10	Potatoes, Early Rose, 1 bushel.....		
	3	2	1
11	Potatoes, Snowflake, 1 bushel.....		
	3	2	1
12	Potatoes, Early White Kidney.....		
	3	2	1
13	Potatoes, Clarke's No. 1, 1 bushel.....		
	3	2	1
14	Potatoes, Beauty of Hebron, 1 bushel.....		
	3	2	1
15	Potatoes, Morning Star, 1 bushel.....		
	3	2	1
16	Potatoes, Early Puritan, 1 bushel.....		
	3	2	1
17	Potatoes, Peerless, 1 bushel.....		
	3	2	1
18	Potatoes, Seedlings, 1 bushel.....		
	3	2	1
19	Potatoes, Early Ohio, 1 bushel.....		
	3	2	1
20	Potatoes, any other variety named, 1 bushel.....		
	3	2	1
21	Potatoes, collection, not less than six varieties of 6 each, correctly named on entry paper and on the specimens.....		
	10	8	6
22	Pumpkins, Field, 2.....		
	3	2	1
23	Squash, Mammoth 2.....		
	3	2	1
24	Turnips, Swede, 6.....		
	3	2	1
25	Turnips, White Globe, 6.....		
	3	2	1
26	Turnips, Yellow Aberdeen, 6.....		
	3	2	1

## Class 49.—Garden Vegetables.

Fee—25c. for 5 entry lot. Over 5 entries, 50c. for lot.

SEC.	1st.	2nd.	3rd.
1 Artichokes, 6 .....	\$ 3	\$ 2	\$ 1
2 Asparagus, 2 bunches. ....	3	2	1
3 Beans, Wax, in pod, 1 gallon.....	3	2	1
4 Beans, Kidney, in pod, 1 gallon.....	3	2	1
5 Beans, Broad, shelled, 1 quart .....	3	2	1
6 Beans, Scarlet Runner, 1 gallon. ....	3	2	1
7 Beets, Long Blood, 6... ..	3	2	1
8 Beets, Turnip 6 .....	3	2	1
9 Broccoli, 2 heads.....	3	2	1
10 Brussels Sprouts.....	3	2	1
11 Cabbage, Henderson's Summer, 2 heads .....	3	2	1
12 Cabbage, Early, correctly named on entry paper and on specimens, 2 heads.....	3	2	1
13 Cabbage, winter, correctly named on entry paper and on specimens, 2 heads.....	3	2	1
14 Cabbage, red, correctly named on entry paper and on specimens, 2 heads.....	3	2	1
15 Cabbage, Savoy, 2 heads .....	3	2	1
16 Cabbage, Early Jersey Wakefield, 3 heads—Special by J. M. Perkins, Seedsman, Winnipeg.....	3	2	
17 Carrots, Red Short Horn, 6.....	3	2	1
18 Carrots, Intermediate, 6.....	3	2	1
19 Cauliflower, 2 heads .....	3	2	1
20 Celery, Red, 6 heads.....	3	2	1
21 Celery, white, 6 heads.....	3	2	1
22 Celery, white, 6 heads (Dwarf) .....	3	2	1
23 Corn, Sweet or Sugar .....	3	2	1
24 Corn, (native).....	3	2	1
25 Cucumbers, large, 4.....	3	2	1
26 Cucumbers, small for pickling, ½ gallon .....	3	2	1
27 Egg Plant, 2 .....	3	2	1
28 Kale, 2 heads ....	3	2	1
29 Lettuce, 2 bunches (Curled).....	3	2	1
30 Lettuce, 2 bunches (Cabbage).....	3	2	1
31 Leeks, 6 .....	3	2	1
32 Melons, Musk, green flesh, 2.....	3	2	1
33 Melons, Musk, yellow flesh, 2 .....	3	2	1
34 Melons, Citron, 2 .....	3	2	1
35 Mushrooms, 6 .....	3	2	1
36 Onions, Red, 12 .....	3	2	1
37 Onions, Yellow, 12.....	3	2	1
38 Onions, Large White, 12... ..	3	2	1

3rd.

\$ 1

1

1

1

1

1

1

1

1

1

1

1

1

1

1

1

1

1

1

1

1

1

1

1

1

1

1

1

1

1

1

1

1

1

1

1

1

1

SEC.	1st.	2nd.	3rd.
30 Onions, Silver or Pickling, 12.....	3	2	1
40 Parsley, 2 bunches .....	3	2	1
41 Parsnips, 6 .....	3	2	1
42 Peas, Green, in pod, 1 gallon .....	3	2	1
43 Pepper, Red, 12 .....	3	2	1
44 Pepper, Green, 12.....	3	2	1
45 Potatoes, Early half-bushel, correctly named on entry paper and on specimens.....	3	2	1
46 Radishes, Winter, 6 .....	3	2	1
47 Radishes, Summer, 6 long... ..	3	2	1
48 Radishes, 6 short. ....	3	2	1
49 Rhubarb, 6 stalks .....	3	2	1
50 Salsify, 6 .....	3	2	1
51 Squash, summer, for table use.....	3	2	1
52 Squash, winter.....	3	2	1
53 Savory herbs collection, not less than 4 varieties named	10	3	2
54 Tomatoes, red, 6.....	3	2	1
55 Tomatoes, large yellow, 6 .....	3	2	1
56 Tomatoes, yellow plum, 6 .....	3	2	1
57 Tomatoes, Collection of not less than 3 varieties.....	5	3	2
58 Tomatoes, Green, Collection of.....	3	2	1
59 Turnips, for table use, 6.....	3	2	1
60 Collection of Garden and Field Roots, named, 1st Prize by Cockshutt Plow Co., Cultivator, value...	20	10	5
61 Vegetable Marrows, 2.....	3	2	1
62 Watermelons, 2 .....	3	2	1

### Class 50.—Small Field Seeds, Flax, Hemp, Etc.

Fee—25c. for each entry.

SEC.	1st.	2nd.	3rd.
1 Timothy Seed, half-bushel.....	\$ 5	\$ 3	\$ 2
2 Clover Seed, bushel, any variety.....	5	3	2
3 Turnip Seed, 5 lbs .....	3	2	1
4 Carrot Seed, 5 lbs.....	3	2	1
5 Red Mangold Seed, 5 lbs... ..	3	2	1
6 Tares, bushel .....	5	3	2
7 Millet Seed, bushel.....	5	3	2
8 Hungarian Grass Seed, half-bushel .....	5	3	2
9 Pure Tobacco Leaf, home grown, 2 lbs.....	3	2	1
10 Scutched Flax, 20 lbs .....	5	3	2
11 Hemp, dressed, 20 lbs .....	5	3	2
12 Hemp Seed, 5 lbs .....	3	2	1
13 Hops, native, 10 lbs .....	3	2	1
14 Sunflower (Helianthus) bearing flowers, 6 stalks .....	3	2	1

SEC.	1st.	2nd.	3rd.
15 Sunflower Seed, half-peck.....	5	3	2
16 Collection of Cultivated Grasses not less than six named varieties .....	10	6	4

## SPECIAL.

25 Collection of Native Grasses grown in Manitoba or the North West Territories not less than 10 varieties, prize exhibits to become the property of donors, the Canadian Pacific Railway Co.....	25	15	
---	----	----	--

## Class 51.—Collection of Field Grain Seeds.

Entrance Free.

Sweepstakes for Agricultural Societies of Manitoba and the North West Territories.

SEC.	1st.	2nd.	3rd.
1 Inter-provincial Prize, best collection of Grains, not less than six varieties, and two bushels of each variety, exhibited by Agricultural Societies in the Province of Manitoba, and Districts of Assiniboia, Alberta and Saskatchewan, exhibits taking prize to become the property of donors, the Canadian Pacific Railway Co .....	\$50	\$25	

**PLANTS AND FLOWERS.**

Fee—25c. for first 5 entry lot. 50c. for lot over 5 entries.

1 A professional is to be considered one who carries on the trade of a florist for a livelihood, or who earns his living as a gardener. A person keeping a gardener will exhibit in the professional class in the name of such gardener.

2 No plant or flower can be exhibited for competition which has not been in the possession of the exhibitor for at least 60 days prior to the Exhibition.

## Class 52.—Plants and Flowers for Professionals.

SEC.	1st.	2nd.
1 Flowers in pots, collection of fifty, Diploma to accompany 1st prize.....	10	8
2 Begonias, flowering, 22 named varieties .....	3	2
3 Begonias, Rex, 6 named varieties .....	3	2

3rd.	SEC.	1st.	2nd.
2	4 Begonias, tuberous rooted, 6 varieties.....	3	2
	5 Carnations, 6 named varieties ...	3	2
4	6 Coleus, collection of 6.....	3	2
	7 Ferns, collection of 6.....	3	2
	8 Fuchsias, collection of 12 named .....	4	3
	9 Foliage Plants, collection of 12.....	4	3
	10 Geraniums, collection of 12 named varieties .....	4	3
	11 Geraniums, collection of 6 fancy leaved.....	3	2
	12 Geraniums, Ivy leaved named.....	3	2
	13 Pelargoniums, 6 varieties.....	3	2
	14 Roses in pots, 6 varieties, named .....	3	2
	15 Specimen Plant, the best .....	5	3
	16 Cut flowers, Asters, collection of 12 varieties ..	2	1
	17 " Antirrhinum, 12 varieties.....	2	1
	18 " Gladioli, 12 varieties ...	2	1
West	19 " Pansies, 12 varieties .....	2	1
	20 " Petunias, collection of 12 varieties .....	2	1
3rd.	21 " Phlox, collection of 12 varieties....	2	1
	22 " Roses, collection of 6 varieties.....	2	1
	23 " Stocks, collection of 12 varieties.....	2	1
	24 " Verbenas, collection of 12 varieties.....	2	1
	25 Floral design, the best .....	5	3
	26 Hanging basket.....	3	2
	27 Hand bouquet ...	3	2

### Class 53.—Plants and Flowers for Amateurs.

Plants exhibited must have been in the possession of exhibitor not less than 60 days previous to Exhibition, and any person selling plants or flowers is ineligible in this class.

	SEC.	1st.	2nd.
	1 Flowers in pots, collection of 12.....	5	3
	2 Begonias in pots " 3.....	2	1
	3 " tuberous " 3 .....	2	1
	4 Fuchsias, collection of 3.....	2	1
	5 " best specimen plant .....	2	1
	6 Foliage Plants, collection of.....	2	1
	7 Geraniums, collection of six named .....	3	2
	8 " best single, named .....	3	2
	9 " " double, " .....	2	1
	10 " " Ivy leaved, named.....	2	1
	11 Specimen Plant, the best.....	2	1
	12 Flowers, cut, Asters, collection of 6 varieties .....	2	1
	13 " Gladioli, " 6 " .....	2	1
	14 " Pansies, " 12 " .....	2	1
	15 " Petunias, " 6 " .....	2	1



SEC.	1st.	2nd.
16 Flowers, cut, Phlox, collection of 12 varieties . . . . .	2	1
17 " Roses, collection of 6 in not less than three varieties . . . . .	2	1
18 " Stocks, collection of 6 varieties . . . . .	2	1
19 " Verbenas, " 6 " . . . . .	2	1
20 " Wild, collection . . . . .	3	2
21 Hanging Basket, the best . . . . .	2	1
22 Best collection of preserved Wild flowers, shewing the whole plant—open to all, 1st Special by R. Waugh, \$5; \$3; \$2.		

### Class 54.—Bees and Honey.

Fee—25 cents for each entry.

SEC.	1st.	2nd.	3rd.
1 Colony of Bees, of pure strain . . . . .	5	3	2
2 Honey in Comb, 10 lbs., product of 1892 . . . . .	5	3	2
3 Honey, extracted, 10 lbs., product of 1892 . . . . .	5	3	2
4 Honey, Vinegar, not less than half-gallon . . . . .	4	2	1
5 Beeswax, 5 lbs. . . . .	3	2	1

### Class 55.—Manufactures of Manitoba and the Northwest Territories.

Exhibits in this class must have been manufactured and finished in the Province or Northwest Territories and with respect to carriage work, the whole or every portion of the vehicle must have been made in the shop of the Exhibitor. Imported and factory-made gearing will not be permitted.

Fee—25c. each Entry.

SEC.	1st.	2nd.
1 Buffalo Road Wagon . . . . .	8	4
2 Ladies Phaeton, with canopy or full leather top . . . . .	8	4
3 Montreal Pleasure Sleigh . . . . .	8	4
4 Farmer's Market Spring Wagon . . . . .	8	4
5 Delivery Wagon . . . . .	8	4
6 Lumber or Farmer's Wagon, rack or box. Prizes by James Robertson & Co., Good value . . . . .	15	12
7 Set Heavy Bob Sleighs, for general purposes . . . . .	5	3
8 Heavy 2½ or 3 inch Tote Sleigh . . . . .	5	3
9 Speeding Sulky . . . . .	5	3
10 Buckboard . . . . .	5	3
11 Collection of Wheeled Vehicles, including light and heavy work . . . . .	Diploma.	
12 Collection of Sleigh Vehicles, including light and heavy work . . . . .	"	
13 Set Whiffletrees, Neck-yoke and cleveices . . . . .	4	2
14 Wagon Wood Work, collection . . . . .	Diploma.	
15 Carriage Trimming collection of cloth and leather . . . . .	5	3
16 Land Roller, wooden . . . . .	5	3

	SEC.	1st.	2nd.
2nd.	17 Harrows .....	5	3
1	18 Farm Gate .....	5	3
1	19 Pump .....	5	3
1	20 Brass and Wire Work .....	5	3
2	21 Goldsmith's and Silversmith's Work .....	5	3
1	22 Iron Castings, collection of .....	5	3
	23 Best collection of Horseshoes, from hammer, no tiling .....	4	2
	24 Best variety of Horseshoes, special .....	15	
	25 Drain Tiles, collection of three pieces .....	5	3
	26 Pottery, collection of three pieces of each .....	6	4
	27 Bricks, one dozen .....	4	2
	28 Lime, one bushel .....	4	2
	29 Door, Window Sash and Mouldings. (Special by Brown and Rutherford.) .....	15	
3rd.	30 Specimen of Workmanship in woodwork by mechanic, 1st prize by Dick & Banning 1000 ft. Lumber, \$25; 2nd prize by Turnbull & McManus, storm sash, \$15.		
2	31 Specimen of woodwork by apprentice, 1st prize, Clothing and Gents' Furnishings by J. Corbett & Co., value .....	15	3
2	32 Specimen of Workmanship in woodwork by an amateur, 1st prize by H. Woods, paints and oils, value .....	15	3
2	33 Furniture. Drawing-room, Dining-room and Bedroom Suites...	Dip.	5
1	34 Furniture Upholstering .....	5	3
1	35 Tents .....	5	3
vince	36 Dairy Utensils, collection of .....	10	5
por-	37 Collection of Tinware, not less than 10 pieces .....	5	3
orati	38 Engraving on Metal .....	Diploma.	
	39 Paints in oil, collection of .....	5	3
	40 Sign-writing and Wood Graining .....	5	3
2nd.	41 Carved Mantelpiece, in Marble, Marbleized Slate, or Wood ..	8	4
4	42 Brooms, one dozen and Brushes, for painters and other purposes, three of each .....	Diploma	
4	43 Biscuits, collection of .....	Diploma	
4	44 Confectionery, collection of .....	Diploma	
4	45 Ales, Porter and Lager Beer, 12 bottles each .....	Diploma	
	46 Soda and other Mineral Waters, collection of .....	Diploma	
12	47 Soaps, Laundry and Toilet, collection of .....	Diploma	
3	48 Linseed Oil and Oil Cake .....	Diploma	
3	49 Lard, Neatsfoot and other animal and fish oils, coll ..	Diploma	
3	50 Ground Coffees and Spices, collection of .....	Diploma	
3	51 Paper, printing wrapping and building .....	Diploma	
na.	52 Letterpress Printing, collection of .....	Diploma	
	53 Bookbinding, four styles .....	Diploma	
2	54 Lithographing .....	10	5
1	55 Collection of furs, dressed or undressed .....	Diploma	
3	56 Collection of Manufactured Furs .....	Diploma	
3	57 Washing Machine .....	5	3

SEC.	1st.	2nd.
58 Binding Twine and other Cordage Manufacture, col. Diploma		
59 Barbed and other Fence Wires, collection .....Diploma		
60 Fulled Cloth, 10 yards.....	3	2
61 Flannel, checked or striped, cotton and wool, 10 yards.....	3	2
62 Flannel, white, cotton and wool, 10 yards .....	3	2
63 Pair Blankets, woollen, collection Factory Woollen Goods ..		
Diploma		
64 Picture Mouldings, collection of.....Diploma		
65 For best specimen of Garment Dyeing .....		
Diploma		
66 Special prizes by G. F. Stephens & Co., for best finished vehicles on which Valentine's Priming Colors, etc., have been used, value.....	40 25	10

### Class 56.—Domestic Manufactures, Manitoba and North West Territories.

Fee—25c. each entry.

SEC.	1st.	2nd.
1 Fulled Cloth, home-made, 10 yards.....	3	2
2 Flannel, checked or striped, cotton and wool, 10 yards.....	3	2
3 Flannel, White, cotton and wool, 10 yards.....	3	2
4 Carpet Woollen, 10 yards .....	3	2
5 Carpet, Rag, cotton warp, 10 yards ..	3	2
6 Carpet, Rag, woollen warp, 10 yards.....	3	2
7 Pair Blankets, woollen.....	3	2
8 Coverlet.....	3	2
9 Straw Hat.....	2	1
10 Pair Woollen Stockings or Socks .....	2	1
11 Pair Cotton Stockings or Socks.....	2	1
12 Pair Woollen Mitts.....	2	1
13 Yarn, Woollen, collection of.....	3	2
14 Plain Rugs .....	3	2
15 Bread, three loaves, 1st prize by W. F. White, Horn Ottoman, value .....	15	
16 Assortment of Cakes, home-made, by D. A. Ritchie, 1st Tea, 2nd, Groceries .....	10	5
17 Soap, home-made, 5 pounds, prizes by E. M. Waddell, Boots and Shoes, value.....	10	5
18 Suit of Men's Underwear, wool hand knitted, 1st prize Dry Goods by Lang & McKeichan, value.....	15	3
19 Collection of Knitted Goods, 1st prize by Bromley & Co., Hair Mattress, value .....	20	2

### Class 57.—Fruits, Preserves, Pickles, Etc., Manitoba and North-West Territories

SEC.	1st.	2nd.	3rd.
1 Currants, black, one quart . . . . .	\$3	\$2	\$1
2 Currants, red, one quart . . . . .	3	2	1
3 Currants, white, one quart . . . . .	3	2	1
4 Gooseberries, one quart . . . . .	3	2	1
5 Raspberries, one quart . . . . .	3	2	1
6 Strawberries, one quart . . . . .	3	2	1
7 Cultivated Fruits, collection of . . . . .	3	2	1
8 Native Fruits, collection of . . . . .	3	2	1
9 Cultivated Fruit preserves, collection of . . . . .	3	2	1
10 Wild Fruit preserves, collection of grown in Province or Territories . . . . .	3	2	1
11 Jellies, collection of . . . . .	3	2	1
12 Dried Fruits, collection of . . . . .	3	2	1
13 Fruits, canned, collection of . . . . .	3	2	1
14 Raspberry Vinegar, three bottles . . . . .	3	2	1
15 Homemade Wine, three bottles . . . . .	3	2	1
16 Pickles, collection of . . . . .	3	2	1
17 Catsups, collection of . . . . .	3	2	1

### Class 58.—Leather and Leather Work, Manitoba and North-West Territories.

Fee—25c. each entry.

SEC.	1st.	2nd.
1 Prepared Skins, Hides and Leather, tanned in Manitoba or North-West Territories . . . . . Diploma		
2 Pair of Boots, hand made . . . . .	\$3	\$2
3 Pair Shoes, hand made . . . . .	3	2
4 Pair of Moccasins, hand made . . . . .	2	1
5 Pair of Mitts, hand made . . . . .	2	1
6 Gentleman's Saddle . . . . .	5	3
7 Cowboy Saddle and Fittings . . . . .	5	3
8 Collection of Boots and Shoes, factory made . . . . . Diploma		
9 Lady's Saddle . . . . .	5	3
10 Assortment of Harness, four sets, including heavy and light, and double and single . . . . . Diploma		

### Class 59.—Preserved Meats and Fish, Manitoba and North-West Territories.

Fee—25c. each entry.

SEC.	1st.	2nd.
1 Collection of Hams and Bacon, smoked . . . . .	\$3	\$2
2 Collection of Hams and Bacon, dry salted . . . . .	3	2

SEC.	1st.	2nd.
3 Pickled Pork, not less than 25 lbs. . . . .	3	2
4 Corned Beef, not less than 25 lbs. . . . .	3	2
5 Sausage collection. . . . .	3	2
6 Collection of Dried Fish, not less than four varieties. . . . .	3	2
7 Collection of Fish, dry salted, not less than four varieties. . . . .	3	2
8 Collection of Fish, pickled in brine, not less than four varieties. . . . .	3	2
9 Collection of Fish, smoked, not less than four varieties. . . . .	3	2
10 Collection of Preserved Meats, Special by Vulcan Iron Works Co., value. . . . .	25	
11 Collection of Preserved Fish. . . . .	Diploma	

## LADIES WORK, FINE ARTS, ETC.

### Class 60.—Ladies' Work.

Exhibits competing for prizes must be the production of the exhibitor. The prize exhibits of the Exhibition of 1891 are not eligible for this competition.

Fee—25c. for first five entry lot. 50c. for over 5 entry lot.

SEC.	1st.	2nd.
1 Applique Work . . . . .	\$2	\$1
2 Autumn Leaves and Ferns, dried ornamental display. . . . .	2	1
3 Berlin Wool Work. . . . .	2	1
4 Berlin Wool Work, raised . . . . .	2	1
5 Braiding . . . . .	2	1
6 Crazy Work, cushion cover . . . . .	2	1
7 Child's Frock, hand made, Lawn . . . . .	2	1
8 Crewel Embroidery, silk. . . . .	2	1
9 Crewel Embroidery, Wool. . . . .	2	1
10 Crochet Work and Gordon Braid combined. . . . .	2	1
11 Crochet Work, cotton. . . . .	2	1
12 Crochet Work, wool. . . . .	2	1
13 Darning on net . . . . .	2	1
14 Design for ornamented Lamp Shade. . . . .	2	1
15 Embroidery in Arascene. . . . .	2	1
16 Embroidery in Bullion. . . . .	2	1
17 Embroidery in Chenille. . . . .	2	1
18 Embroidery in Cotton. . . . .	2	1
19 Embroidery in Silk . . . . .	2	1
20 Embroidery on Felt. . . . .	2	1
21 Embroidery on Muslin . . . . .	2	1
22 Embroidery on Plush and Velvet . . . . .	2	1
23 Embroidery on Satin. . . . .	2	1

	SEC.	1st.	2nd.
2nd.	24 Embroidery Silk on Linen .....	2	1
2	25 Embroidery Silk on Bolting Cloth .....	2	1
2	26 Embroidered Chair Cover .....	2	1
2	27 Embroidered Mantle Drape, mounted .....	3	2
2	28 Embroidery collection of Table Linen .....	5	3
2	29 Flowers, Berlin Wool .....	2	1
2	30 Flowers, Paper .....	2	1
2	31 Gentleman's Linen Shirts, hand made .....	2	1
	32 Gentleman's Flannel Shirt, hand made .....	2	1
	33 Guipure Work .....	2	1
	34 Knitting in Cotton .....	2	1
	35 Knitting in Wool .....	2	1
	36 Lace, Honiton .....	2	1
	37 Lace, Point .....	2	1
	38 Machine or Twine Work .....	2	1
	39 Natural Flowers, embalmed .....	2	1
	40 Netting .....	2	1
	41 Pillow Shams, tucked and embroidered .....	2	1
	42 Quilt, Knitted .....	2	1
The	43 Quilt or Counterpane, crochet .....	2	1
	44 Quilt or Spread, knotted .....	2	1
	45 Quilt, Patchwork, cotton .....	2	1
	46 Quilt, Patchwork, log cabin .....	2	1
2nd.	47 Quilt, Patchwork, silk .....	2	1
\$1	48 Quilt, Patchwork, wool .....	2	1
1	49 Rag Mat .....	2	1
1	50 Ribbon Embroidery .....	2	1
1	51 Ric-Rac .....	2	1
1	52 Roman Embroidery .....	2	1
1	53 Sofa Cushion, mounted, silk embroidery .....	3	2
1	54 Sofa Cushion, mounted, linen embroidery .....	3	2
1	55 Tatting .....	2	1
1	56 Tray Cloth. Linen, worked with silk .....	2	1
1	57 Wax Work .....	2	1
1	58 Worked Slippers, cross stitch .....	2	1
1	59 Wool Mat .....	2	1
1	60 Collection of Embroidery on Cotton, Silk or Cloth .....	5	3
1	61 Collection of Berlin Wool Work .....	5	3
1	62 Collection of Knitting, by girl under 14 years. (Entrance free.)	3	2
1	63 Collection of Hand-made Lace Work .....	Special..	3
1	64 Collection of Knitting in Wool, Special by J. Hay & Co, side-board, value .....	15	
1	65 General Collection of Ladies' Work. Special prize, parlor stove, by McClary, Manufacturing Co., value .....	40	
1	66 Winner of greatest number of 1st prizes in this Class. Special, by W. Grundy and Co., Winnipeg. Sewing Machine, value .....	60	

## Class 61.—Fine Arts.

All exhibits competing for prizes must be the production of the exhibitor.

The prize exhibits of the exhibition of 1891 are not eligible for this competition.

Evidence of originality to be furnished by the exhibitor whenever required by the judges or the committee.

Fee 25c. each entry.

### Professionals.

SEC.	1st.	2nd.
1 Oils, Portrait .....	\$ 8	5
2 Oils, Landscape, Manitoba or North-West scene .....	8	5
3 Oils, Flowers or Fruit .....	6	4
4 Oils, Still Life .....	6	4
5 Water Colors—Landscape or Marine.....	6	4
6 " —Landscape, Manitoba or North West scene..	6	4
7 " —Fruit, Flowers or Still Life.....	6	4
8 Crayon Drawing.....	4	2
9 Pen and Ink Drawing.....	4	2
10 Special prizes by C. F. Blanchard (open to residents of Manitoba.) For painting on china (Landscape).....	3	
For painting on china (Flowers) 3 pieces.....	3	

### Amateurs.

11 Oils, Originals—Landscape or Marine View.....	5	3
12 Oils, Landscape—Manitoba or Northwest Scene, .....	5	3
12(a) Oils, Still Life .....	5	3
13 Oils, Flowers or Fruit.....	5	3
14 Originals in Water Colors—Landscape or Marine .....	4	2
15 Originals in Water Colors—Manitoba or Northwest Scene.		
Special by Bishop Furniture Co., pair Etchings, value...	15	2
16 Originals in Water Colors—Flowers, Fruit or Still Life .....	4	2
17 Copies in Oils—Landscape or Marine .....	3	2
18 Oils, Still Life .....	3	2
19 Oils, Flowers or Fruit.....	3	2
20 Copies in Water Colors—Landscape or Marine.....	3	2
21 Copies in Flowers, Fruit or Still Life.....	3	2
22 Sepia Drawing.....	3	2
23 India Ink Drawing .....	3	2
24 Crayon Black and White .....	3	2
25 " Colored .....	3	2
26 Pen and Ink Sketch .....	3	2
27 Pencil Drawing .....	3	2
28 Painting on Porcelain.....	2	1
29 Painting on Silk, or Satin, in oils .....	2	1

SEC.	1st.	2nd.
30 Painting on Silk or Satin, in Water Colors .....	2	1
31 Painting on Velvet or Plush, in oils .....	2	1
32 Painting on Velvet or Plush, Water Colors.....	2	1
33 Painting on Glass.....	2	1
34 Painting on Jars .....	2	1
35 Painting on Terra Cotta.....	2	1
36 Painting on Porcelain ..	2	1
37 Painting on China, Fish set .....	2	1
38 Painting on China Royal Worcester.....	2	1
39 Painting on China, Japanese Decorations.....	2	1
40 Painting on China, Crown Derby .....	2	1
41 Painting on China, ½ doz. Cups and Saucers.....	2	1
42 Special by A. E. Baerman for Mr. Hideh, for best collection of originals, portrait, value .....	25	
43 Best collection of originals in oil and water color, any kind, furniture, Special by Scott & Leslie.....	50	
44 Best Collection of Paintings on China—Special by Gowans, Kent & Co.—Dinner Service, value .....	15	
45 Best Collection of Paintings, in oils or water colors, on silk or satin, velvet or plush.—Special by Andrew & Co.—Pitcher value .....	20	

### Photography.—Professionals.

SEC.	1st.	2nd.
1 Portraits, Cabinets, Panels or Imperial size on Albumen Paper, collection of twelve .....	\$4	\$3
2 Portraits, Cabinets, Panels or Imperial size on Aristo Paper, collection of twelve .....	4	3
3 Views Manitoba, Northwest and B. C., colle tion of twelve.. Diploma and .....	4	3
4 Portraits, one finished in Water Color .....	3	2
5 Portraits, one finished in India Ink .....	3	2
6 Portrait one finished in Crayon .....	3	2
7 Portraits, ½ doz. Cabinets, Water Colors.....	3	2
8 Best collective exhibit of photographs .....	Diploma	

### Architecture, Carving, Illuminating, Etc.—Professional or Amateurs.

SEC.	1st.	2nd.
1 Architectural Drawing .....	\$ 3	\$2
2 Geometrical or Mechanical Drawing.....	3	2
3 Illuminating .....	3	2
4 Carving in Wood .....	3	2
5 Carving in Stone or Marble.....	3	2
6 Hammered Brass Work.....	3	2



### Class 62.—Natural History.

Fee, 25c. each entry.

SEC.	1st.	2nd.
1 Animals indigenous to Manitoba and the North West Territories, Stuffed, Collection of (not less than 20 animals) . . . .	\$8	5
2 Animals' Heads (mounted) . . . . .	8	5
3 Birds indigenous to Manitoba and North West Territories, Collection of . . . . .	8	5
4 Insects of Manitoba and North West Territories, Collection of (named) . . . . .	5	3
5 Preserved Specimens of Plants (named) prevalent in Manitoba and North West Territories, injurious to agriculture . . . .	8	5
6 Indian Implements and other Curios . . . . .	5	3
7 Indian Beadwork and other Manufactures, Collection of . . . .	5	3
8 Woods grown in Manitoba and North West Territories, dressed and named, Collection of not less than 15 . . . . .	8	5

### Class 63.—Mineralogy and Geology.

Fee, 25c. each entry.

SEC.	1st.	2nd.
1 Geological Specimens from Manitoba and North West Territories, Collection of . . . . .	8	5
2 Coal from Manitoba and North West Territories. Specimens from six named localities . . . . .	5	3
3 Economic Ores, Collection of . . . . .	5	3
4 Useful Minerals, including Salt, Petroleum, Gypsum, Asbestos, Paints, &c., Collection of . . . . .	8	5
5 Clay and Sand for Pottery-moulding and Glass-making, Collection of . . . . .	8	5

### Class 64.—Prizes to Schools.

No fee for entry.

SEC.	1st.	2nd.
1 Composition—Best series from any one mixed school. (One or two teachers) . . . . .	5	3
2 Composition—Best series from any graded school. (More than two teachers) . . . . .	5	3
3 Writing—Best specimens from any mixed school. Each specimen to contain at least thirty words . . . . .	5	3
4 Writing—Best exhibit from any graded school. Prizes to be awarded on the writing in the composition exercises, Sec. 2 . . . .	5	3
5 Arithmetic—Best series of original problems. Each pupil to construct at least six problems on the work of his class. (Mixed schools) . . . . .	5	3

	SEC.		1st.	2nd.
2nd.		6 Arithmetic—Best solution of problems. Each pupil to solve at least six different problems on work prescribed for his class. (Mixed schools.).....	5	3
5		7 Arithmetic—Best series of original problems with solutions. Each pupil to construct and solve at least four problems on the work of his class. (Graded schools.).....	5	3
5		NOTE.—Each of the above exhibits must be accompanied by a teacher's certificate to the effect that all the pupils of the class competing have contributed; that the work shown is that of the pupils; and that no alterations have been made or suggested by the teacher. The classes will be designated by the reading books they employ.		
3		8 Geography—Best set of moulded maps—pulp or plaster of Paris. (1) North America. (2) South America. (3) Europe and Asia. (4) Africa. (5) Australia.....	6	4
5		9. Geography—Best set of moulded maps—sand, putty or clay. (1) North America. (2) South America. (3) Europe and Asia. (4) Africa. (5) Australia.....	5	3
		10 Geography—Best single moulded map. This may be one of the maps exhibited in sections 8 or 9.....	3	
2nd.		11 Geography—Best set of topical maps. Open to pupils in a mixed school.....	5	3
5		12 Geography—Best set of Topical maps open to pupils in a graded school.....	5	3
3		13 History—Best set of historical maps of Canada, open to pupils of any school.....	5	3
3		14 Best collection of samples of "Busy Work," parts one and two.....	5	3
5		15 Original essay on "Manitoba's Resources and its Capabilities as a Field for Emigrants—Open. (Special by Thos Ryan)	25	
5		16 Composition—Tree planting in Manitoba—Open.....	5	
		17 Flowers—Preserved wild flowers. (See class 53, sec. 22).		
		18 Best collection of aids to geographical study. Open to teachers.....	5	
		19 Best collection of aids to historical study. Open to teachers. Special by Ferguson & Co., value.....	15	
2nd.		20 Best collection of children's literature (6 to 10 years.) Open to teachers.—Special by R. W. Woodroffe—Cup value ..	15	
3		21 Best graded series of drawing (Industrial, Freehand).....	5	3
3		22 Best graded series of drawing (Objects, Freehand).....	5	3
		23 Best high school exhibit :—		
3		(a) Languages.....	5	3
		(b) Mathematics.....	5	3
3		(c) Science.....	5	3
		24 Colored topographical map of Manitoba. For boys and girls under 17 years of age. Open. Special by Alex Taylor, bookseller, Winnipeg; Musical box, value \$35. Exhibit taking prize to become the property of donor, value ..	35	5

SEC.	1st.	2nd.
25 Best general Exhibit by Indian Industrial Schools, Diploma and .....	10	5
26 Best individual sample of Kindergarten work. Open to all Children under 7 years of age.....	3	2
27 Best Essay on "Design in Nature"—Open to Students in Colleges and High Schools—Special by R. D. Richardson	5	

## ADDITIONAL SPECIAL PRIZES.

### Class 65.—Special Collections of Grains.

1 Collection of Grains grown in McLeod and Pincher Creek Districts, given by the Calgary & Edmonton Railway.....	\$20
2 Collection of Grains grown within 75 miles of Calgary—given by the Calgary & Edmonton Railway.....	20
3 Collection of Grains grown within 25 miles of its Railway, north of Township No. 20—given by the Qu'Appelle Long Lake & Saskatchewan Railway .....	20
4 Collection of Grains grown in the Qu'Appelle Valley District between ranges 9 to 15—given by the Ontario & Qu'Appelle Land Co. Lt.	20

## SPECIAL FEATURES.

### Class 66.—Baby Show.

Not included in the General Attraction Programme.

Entrance free.

Best Baby Boy, between one and two years, cash .....	\$10
Best Baby Girl, between one and two years, cash .....	16
Best Boy or Girl, under 12 months, box Royal Crown Soap, value.....	5

All prizes in the Baby Contest by the Royal Crown Soap Co., Winnipeg.

## List of Contributors in Cash to the Prize List.

Canadian Pacific Railway Co.....	\$250
Ogilvie Milling Co .....	125
Alexander Macdonald.....	115
Hon. Thos. Greenway .....	100
Hudson's Bay Co.....	100
R. J. Whitla.....	100
Allan Brydges & Co .....	50
Carscaden Peck & Co .....	50
E. L. Drewry .....	50
G. F. & J. Galt.....	50
E. F. Hutchings .....	50
Lake of the Woods Milling Co.....	50
J. D. McGregor & Co., Brandon.....	50
D. E. Sprague .....	50
Calgary & Edmonton Ry .....	40
Ames Holden & Co.....	25
J. H. Ashdown .....	25
Jno. Baird.....	25
W. H. Barry .....	25
N. Bawlf.....	25
Clarendon Hotel.....	25
Clydesdale Horse Association of Canada.....	25
Cornell, Spera & Co ....	25
Wm. Clougher .....	25
W. D. Douglas & Co.....	25
Lyman Dwight, Supt. G.N.W. Tel. Co .....	25
Grand Union Hotel .....	25
J. Y. Griffin & Co.....	25
Thos. Jennings .....	25
D. T. Lennon .....	25
W. S. Lister.....	25
T. C. Livingstone .....	25
Manitoba Hotel.....	25
John Mather, Keewatin .....	25
Martin, Mitchell & Co .....	25
Merrick Anderson & Co.....	25
Manitoba & North West Loan Co.....	25
Mackenzie, Powis & Co .....	25
McBean Bros.....	25
McLaren Bros., Brunswick Hotel.....	25
S. Nairn.....	25
Pat O'Connor .....	25
C. J. O'Connell.....	25

---

J. Robinson.....	\$25
S. A. Rowbotham.....	25
Rutley & Bateman.....	25
Thomas Ryan.....	25
W. E. Sanford Co.....	25
Thompson Codville & Co.....	25
Wm. Whyte.....	25
Archibald & Howell.....	20
Carruthers and Brock.....	20
F. W. Drewry.....	20
Hope and Co.....	20
Manitoba Free Press Co.....	20
D. McDonald.....	20
H. G. McMicken, General Agent G. N. R. Co.....	20
North of Scotland Canadian Mortgage Co.....	20
Qu'Appelle, Long Lake & Saskatchewan Ry.....	20
Ontario & Qu'Appelle Land Co. (Ltd.).....	20
Rublee, Riddell and Co.....	20
Royal Crown Soap Co.....	20
Stuart and Harper.....	20
Robt. Young.....	20
Aikins, Culver & Co.....	15
Brown and Rutherford.....	15
J. F. Campbell.....	15
W. W. Carter.....	15
W. G. Douglass.....	15
Kirby, Colgate and Armstrong.....	15
Mulock and Robarts.....	15
Redmond & Greenlees.....	15
Velie Carey & Co.....	15
R. J. Wood.....	15
J. Bernhart.....	10
A. Black.....	10
W. F. Buchanan.....	10
W. J. Boyd.....	10
Alex. Calder.....	10
Ald. J. W. Cockburn.....	10
Isaac Campbell, Q.C.....	10
S. P. Clark.....	10
R. J. Campbell.....	10
Crowe & Co.....	10
G. H. Campbell.....	10
Dodd & Co.....	10
Dines & Cleveland.....	10
Drummond Bros. & Moffat.....	10
Elliott & McCreary.....	10
G. W. Girdlestone.....	10
Gillespie & Snarey.....	10

\$25	J. F. Howard & Co .....	\$10
25	Hingston Smith Arms Co .....	10
25	Harvey & McCrae.....	10
25	Jopling & Romanson.....	10
25	R. W. Jameson .....	10
25	J. G. Morgan... ..	10
25	Martin, Rosser & Co.....	10
20	Jno. Moyses .....	10
20	Man. Trust & Loan Co.....	10
20	R. Muir & Co.....	10
20	Manitoba Mortgage & Invest. Co .....	10
20	Jno. McDonald .....	10
20	M. T. McKittrick .....	10
20	David McGregor .....	10
20	D. H. McMillan & Co .....	10
20	O'Loughlin Bros.....	10
20	J. O'Connor .....	10
20	Permanent Mortgage and Trust Co., Winnipeg.....	10
20	Parsons Produce Co ...	10
20	Parsons, Bell & Co .....	10
20	F. L. Patton.....	10
15	Richard and Co .....	10
15	Geo. Ryan.....	10
15	G. H. Rodgers .....	10
15	J. J. Russell .....	10
15	H. Sandison .....	10
15	H. E. Sharp—Imperial Oil Co .....	10
15	C. A. Stewart .....	10
15	A. Sylvain .....	10
15	Sibley & Lewis ....	10
15	H. A. Seed .....	10
10	Robert Strang.....	10
10	A. J. Smale.. ..	10
10	T. D. Smith.....	10
10	G. H. Strevel.. ..	10
10	Tees & Persse.....	10
10	Toronto Hide Co .....	10
10	T. W. Taylor .....	10
10	J. Stewart Tupper .....	10
10	Templeton & Co ...	10
10	Waterous Engine Works..	10
10	Western Lumber Co .....	10
10	S. Walker.....	10
10	J. T. Wilson.....	10
10	Western Coal Co .....	10
10	Wright Bros .....	10
10	C. F. Blanchard....	6
10	D. D. Aitkin .....	5

C. A. Baskerville	.....	\$5
A. Bright	.....	5
H. A. Bannerman	.....	5
W. Bell	.....	5
Central Drug Hall	.....	5
F. Cloutier	.....	5
Geo. Craig	.....	5
R. D. Campbell	.....	5
N. Chevrier	.....	5
D. H. Coates	.....	5
W. A. Carson	.....	5
Canadian Plumbing Co.	.....	5
Campbell, Bros	.....	5
Dr. R. R. Dalgleish	.....	6
Despars & Bleau	.....	5
A. Dawson	.....	5
J. S. Dundas	.....	5
J. Dresser	.....	5
J. Fantasin	.....	5
G. Frankfurter	.....	5
Gold Seal Oyster Co.	.....	5
J. C. Gordon	.....	5
John Hamilton	.....	5
R. Horsley	.....	5
J. M. Hall	.....	5
Wm. Hespeler	.....	5
Holman Bros	.....	5
J. S. Hough	.....	5
S. Hooper	.....	5
C. F. Jeffares	.....	5
W. R. Johnson	.....	5
T. Jobin	.....	5
F. Lindsay	.....	5
H. Linard	.....	5
G. Murray	.....	5
C. H. Mahon	.....	5
Thos. Morrison	.....	5
A. E. Maycock	.....	5
G. W. Meldrum	.....	5
D. A. McArthur	.....	5
J. L. McDougal	.....	5
J. A. McKerchar	.....	5
Wm. McFarlane	.....	5
W. L. McKenzie	.....	5
J. D. Naismith	.....	5
W. J. O'Connor	.....	5
Parker's Dye Works	.....	5
E. Parker	.....	5

J. M. Perkins.....	\$5
J. E. Pulford & Co. ....	5
Jno. W. Poyntz....	5
Pengelly & Ford....	5
T. D. Robinson .....	5
Richards & Bradshaw .....	5
R. D. Richardson .....	5
Smith & McMaster .....	5
W. H. H. Stone .....	5
R. R. Scott .....	5
Walter Scott .....	5
Spring & Co .....	5
O. Simmunson .....	5
E. Turnbull .....	5
T. Tessier .....	5
H. Vivian .....	5
F. Vanderwee .....	5
Wright & Jukes....	5
Jno. Walterhouse .....	5
Bell & Hardy.....	3
G. W. Baker ..	2
G. E. Brown.....	2
J. Ball .....	2
Jno. Bawlf .....	2
W. G. Fonseca.....	2
G. A. Glines .....	2
G. Jones .....	2
A. Smith....	2
A. Symes .....	2

Special Prizes in Cups, Medals or Goods,

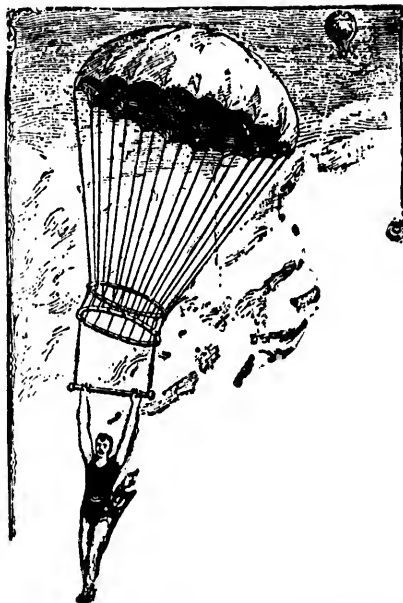
E. Boyce .....	\$100
F. A. Fairchild & Co.....	100
G. F. Stephens & Co .....	75
Massey-Harris Co .....	70
H. S. Westbrook .....	65
W. Grundy & Co .....	60
American Berkshire Association.	50
Acton Burrows, Nor'-West Farmer Co. ...	50
Scott & Leslie .....	50
McClary Manufacturing Co .....	40
Alex Taylor .....	35
Frost & Wood .....	33



E. & C. Gurney Co. ....	\$30
W. N. Johnson .....	30
Ross & Maw.....	30
Watson Manufacturing Co .....	30
J. J. White .....	30
Jas. Robertson & Co .....	27
Anderson & Calvert.....	25
A. E. Baerman, for Mr. Hildeh (Artist).....	25
H. A. Chadwick .....	25
Dick & Banning ...	25
D. R. Dingwall .....	25
E. F. Hutchings (In addition to \$50 cash)...	25
Kenneth McLean .....	25
W. A. Peirce.....	25
G. R. Thompson .....	25
Vulcan Iron Co ....	25
Western Canada Loan & Savings Co .....	25
Geo. D. Wood .....	25
Body & Noakes.....	24
Andrew & Co.....	20
Bromley & Co .....	20
Cockshutt Plow Co ..	20
E. B. Eddy Co .....	20
Steel & Wing.....	20
R. Cochrane & Co., .....	18
Banfield Carpet Store.....	15
Bishop Furniture Co .....	15
J. Corbett & Co ....	15
Ferguson & Co .....	15
Ford & Lowe .....	15
Gowans, Kent & Co .....	15
Jas. Hay & Co.....	15
Wm. Halpenny .....	15
Lang & McKeichan .....	15
R. H. Nunn .....	15
D. A. Ritchie.....	15
Turnbull & McManus ....	15
E. M. Waddell .....	15
W. F. White .....	15
D. Wood .....	15
R. W. Woodroffe. .	15
Farmers' Advocate, 2 Silver Medals.	
McKenzie, Powis & Co. (In addition to \$25 cash) .....	6
Royal Crown Soap Co. (in addition to \$20 cash) .....	5

# GRAND Balloon Ascension ! From 1,000 to 5,000 Feet in Height

From which the Balloonist will leap with a Parachute.



## THE GREAT AMERICAN ÆRONAUT

**PROF. T. I. CASH**

Has been engaged by the management of the

# Winnipeg Industrial Exhibition

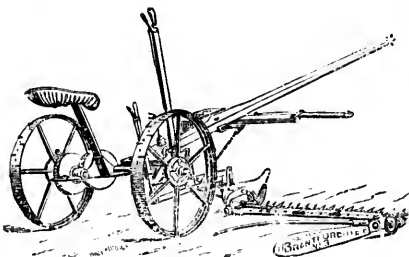
**To make TWO SENSATIONAL BALLOON ASCENSIONS AND TWO PARACHUTE DESCENTS at the Exhibition grounds**

**ON JULY 28 AND 29,**

Wind and weather permitting.

As this is the first Parachute descent from a Balloon ever attempted in Manitoba, it will be an opportunity of a lifetime, and no one should fail to see this thrilling exhibition.

We have Permanent Warehouses and Reliable Agents everywhere.



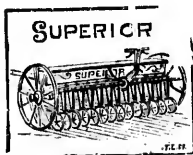
# MASSEY-HARRIS Co.,

(LIMITED.)

WINNIPEG M.A.N.

Farm Implements and Settlers' Supplies.

## OUR LEADING LINES:



### VEHICLES.

WAGONS,  
BUGGIES,  
BUCKBOARDS,  
CUTTERS,  
SLEIGHS.

### CULTIVATING.

PLOWS (all styles),  
SULKY PLOWS,  
HARROWS,  
DISC HARROWS.

### SEEDING.

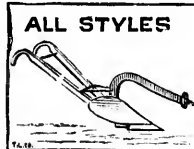
PRESS DRILLS,  
SPRING TOOTH SEEDERS,  
LAND ROLLERS.

### HARVESTING.

SELF-BINDERS,  
MOWERS,  
HAY RAKES,  
HAY LOADERS.

### THRESHING.

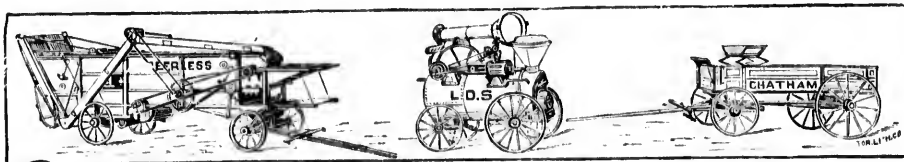
SEPARATORS,  
FANNING MILLS,  
ENGINES,  
HORSE POWERS,  
TREAD POWERS.



### SUNDRIES.

WINDMILLS,  
PUMPS,  
FEED GRINDERS,  
GRAIN CRUSHERS,  
WOOD GOODS,  
GARDEN TOOLS.  
(PLANET JR.)  
&c., &c.

SEND FOR CATALOGUE.



where.



O.,

lies.

ES

ES.

ERS.  
IERS.

LS.  
(.)

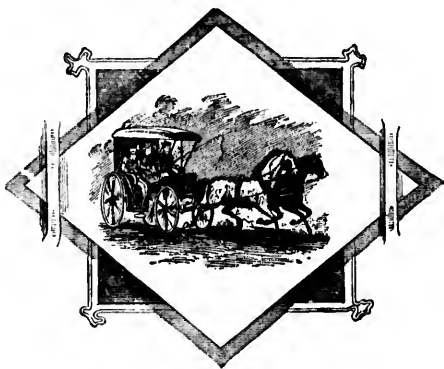
ALOGUE.



J. G. HARVEY

A. C. McRAE.

# HARVEY & McRAE,



Wholesale and Retail Dealers in

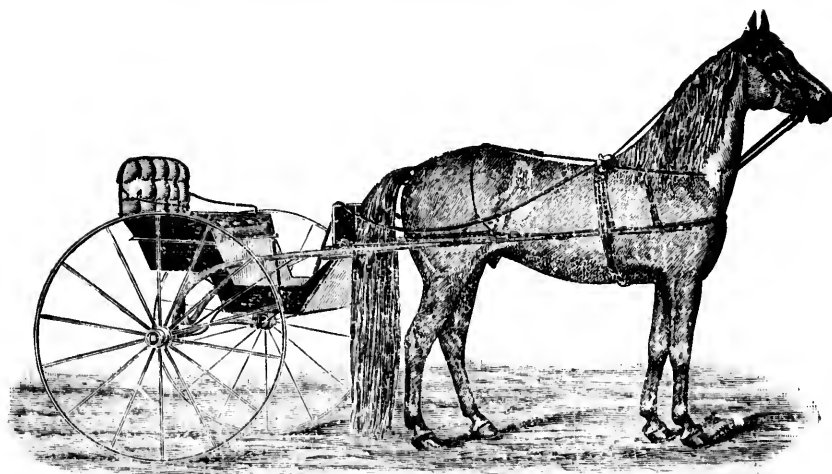
HACKS.  
CARRIAGES.  
WAGGONS.  
BUGGIES.  
PHAETONS.  
CUTTERS.  
SLEIGHS.  
IMPLEMENTS.  
HARNESS.  
ROBES, &c.

Manufacturers of Carriage Tops and Trimmings

COR. KING AND JAMES STREETS,

WINNIPEG, MANITOBA.

## R. COCHRANE & CO.



OUR STOCK OF

Buggies, Carts, Wagons, Sleighs, Cutters, Harness, Tops, Trimmings, Wood Goods, &c.

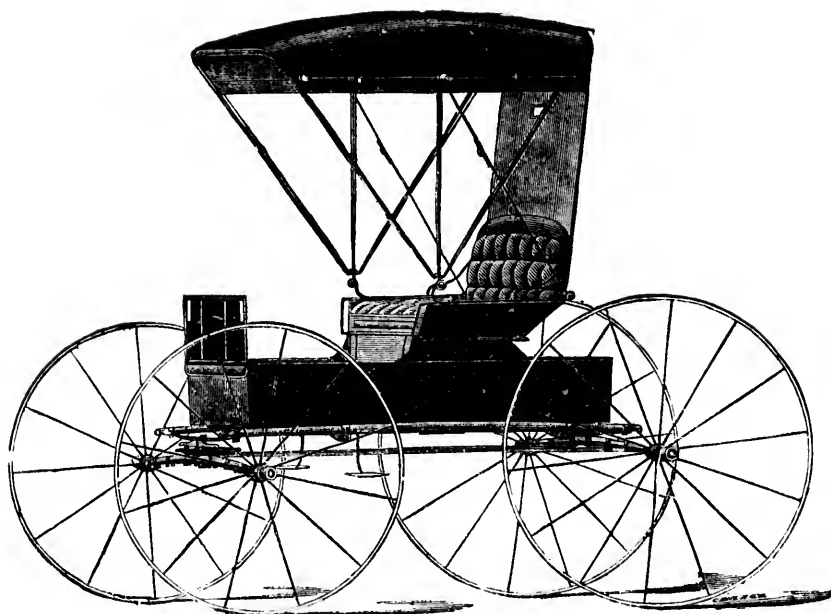
Is the largest and most complete in the Northwest. Our goods will be on view at the Exhibition; if you require anything in our line don't leave the City without seeing our goods and getting prices.

281 JAMES STREET, Winnipeg, Man.

"Satisfaction to our patrons" is our motto.

We aim to get the Neatest, Best, and Most Modern

IMPLEMENTS, THRESHERS,  
CARRIAGES, ETC.



OUR SPECIALTIES:

GENTS' ROAD WAGONS.

LADIES' PHAETONS.

MIKADOS.

GLADSTONES.

KENSINGTONS.

SURRIES.

VEHICLES OF ALL KINDS.

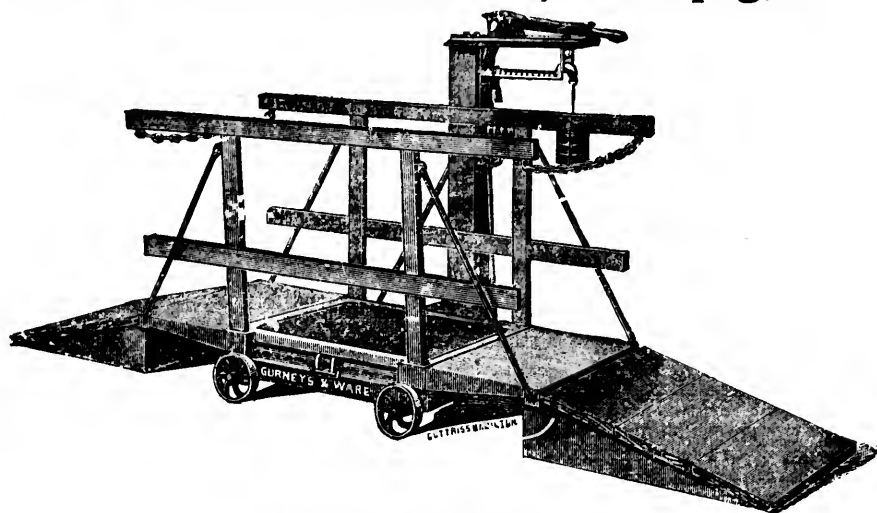
HANDSOME CATALOGUE MAILED FREE ON APPLICATION.

INSPECT STOCK. GET PRICES.

**F. A. FAIRCHILD & CO.,**

156 PRINCESS ST., Winnipeg, Manitoba.

# THE GURNEY SCALE CO., Winnipeg, Man.



## GURNEY'S STOCK SCALE.

Built expressly for Farmers and Stock Raisers, for weighing Cattle or Grain.  
Scales for all purposes in stock at Winnipeg at all times.

The Gurney Scale Co., - Winnipeg, Manitoba.

## FLORAL DESIGNS, MONOGRAMS **FORT ROUGE** Greenhouses.



OF THE FINEST  
FLOWERS.

MADE TO ORDER

SHORTEST

ON THE  
NOTICE

ESTABLISHED 1881

Bedding Out and Choice Table  
Plants, Strawberry, Raspberry, Cur-  
rant, Rhubarb, Asparagus, Cauli-  
flower, Cabbage, Celery and Tomato  
Plants, all hardy grown. Country  
orders receive prompt attention.

**BRAXTON & BOWYER, Props.**

TELEPHONE 192.

# Morton, Alexander & Morton,

**HOME  
INDUSTRY**

TANNERS, CURRIERS And  
BOOT MANUFACTURERS.

171 and 173 King Street, and 242 Main  
Street, Winnipeg.

HIDES TANNED FOR ROBES. HIGHEST PRICE GIVEN FOR HIDES AND SKINS.

J. M. ROSS,

J. MAW,

# ROSS & MAW,

DEALERS IN ALL KINDS OF



## *Fancy Carriages,*

BUGGIES, CUTTERS AND SLEIGHS,  
ROAD AND TRACK CARTS, SULKIES,  
TRACK AND DRIVING HARNESS OF ALL  
DESCRIPTIONS.

PUMPS,  
WIND MILLS.  
CRUSHERS,  
STRAW CUTTERS.



Office and Show Rooms: 144 PRINCESS ST., Winnipeg, Man.



## ALEXANDER GORDON,

214 First Avenue N, Winnipeg.

Ladies' and Gents' Fine Boots,  
Shoes and Slippers.

MADE TO ORDER.

ALL DEFORMITIES OF THE FEET  
CAREFULLY ATTENDED TO.

REPAIRING,

Invisible Patching and Rubber Goods neatly done.

## WRIGHT & CO.,

MANUFACTURERS AND DEALERS IN

## Harness, Riding Saddles

HORSE CLOTHING, WHIPS, TRUNKS, VALISES, &c.

284 William Street, South Side of Market,

WINNIPEG, MAN.

J. MAW.

## THE BEST PLACE TO BUY

Games, Toys, Express Waggon.  
Carts, Velocipedes, Tricycles, Fancy  
Goods, Wools, Embroidery Silks,  
Art Silks, Muslins, Child's White  
Wear, &c.

### Baby Carriages.

The Most Complete Stock in  
the City.



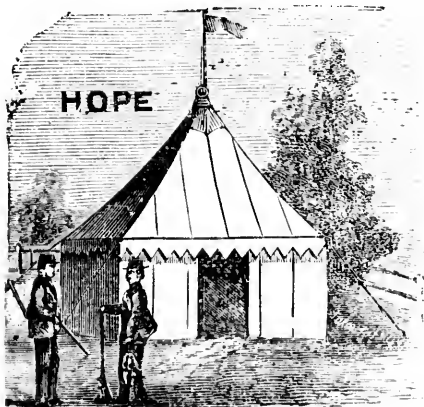
## A. E. MAYCOCK,

414 MAIN STREET (McIntyre Block), WINNIPEG.

# HOPE & Co.,

MANUFACTURERS OF

## TENTS, AWNINGS,



Waggon and Cart Covers  
Paulins.

Woven Wire Springs.  
Mattresses and Pillows.  
Flags and Streamers.

183 SIXTH AVE. N.,

WINNIPEG, MAN.



---

# Dominion Dairy Supply Co.

*Centrifugal Cream Separators of all Kinds and Descriptions.*

*Creamery and Dairy Outfits a Specialty.*

*Dairy Supplies of the very Best Quality.*

ADDRESS :

**S. M. BARRE, Box 953, Winnipeg.**  
or the Grand Central Hotel.

---



---

## *Stuart & Harper,*

(SUCCESSORS TO ROBT. MUIR & CO.)

### MACHINERY BROKERS.

DEALERS IN

Engines and Boilers, Flour Mill and Grain Elevator Machinery, Steam Boat, Saw Mill, Woodworking and Mining Machinery, Iron Tools, Steam Pumps, Force Pumps, Wind Mills, Hoists, Mill Furnishings and Engineers' Supplies.

*Sole Agents for Dodge Wood Split Pulleys and Manilla Rope Transmissions.*

*Western Agents for Royal Electric Co., Montreal.*

*Agents for North American Mill Building Co's Machinery and Supplies,*

SECOND HAND MACHINERY BOUGHT AND SOLD.

760 MAIN ST., WINNIPEG, MAN.

# Fierce's Harness Manufactory

278 JAMES ST., WINNIPEG.

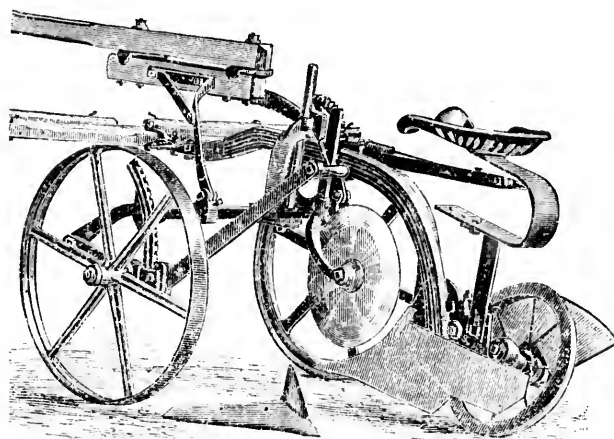
CHEAPEST HOUSE IN MANITOBA.

ONE PRICE. CASH ONLY.

## Cockshutt Plow Company, Ltd.

MANUFACTURERS OF HIGH GRADE PLOWS.

Our goods are all new and manufactured in the most improved styles, and nothing but first class material used. We are in a position to give our customers the benefit of our handling our own goods direct from the factory.



SEE OUR PLOWS. TRY OUR PLOWS. BUY OUR PLOWS.

HARROWS, WAGONS, ROLLERS, SCRAPERS, SCUFFLERS, &c.

Factory and Head Office:

BRANTFORD, ONT.

Western Headquarters:

PRINCESS ST., Winnipeg, Man.

*HEADQUARTERS FOR HARDWARE,  
STOVES, PAINTS, ETC.*

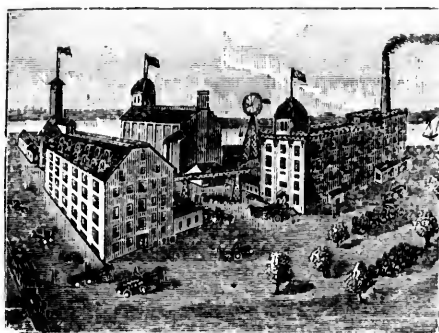
WHOLESALE AND RETAIL AT

## CHARLIE BASKERVILLE'S

656 MAIN ST., WINNIPEG, a few doors North of Logan Street  
and near C. P. R. Station.

*Call and see goods, get prices, and be convinced that this is the cheapest house in the City.*

Edward L. Drewry,  
BREWERY OF  
FINE ALES, EXTRA PORTER,  
—AND—  
PREMIUM LAGER.



Our aim has always been the production of an article of high standard quality, nothing but the choicest malt and hops used in its manufacture.

Physicians and others cordially invited to visit and inspect the Brewery, which is the most extensive in Western Canada.

Our productions are recommended by the faculty throughout Manitoba and Northwest, and will be found equal to the imported.

PURITY, AGE, STRENGTH.

Redwood Brewery and Malt Houses,

NORTH MAIN STREET, WINNIPEG.

Also Proprietor Empire Brewery, Winnipeg.

T  
puttin  
produ  
can of  
Goods  
Flamm

ry,  
RTER,

# FROST & WOOD,

OF SMITH'S FALLS, ONT.,

MANUFACTURERS OF AND DEALERS IN

## Agricultural Implements

CALL AND SEE OUR CELEBRATED

**CHAMPION COMBINED PRESS DRILL.**

**Springtooth Broadcast Seeders and Drills.**

*Single Apron*

*Binders,*

*Model*

*Mowers,*

*Tiger Rakes,*

*Breakers,*

*Cross Plows,*

AGENCY OF

**The John Abell Engine and Machine Works.**

**Toronto Advance Separators,**

**"Triumph" and "Advance"**

**Portable and Traction Engines.**

Record - 3,300 bushels in 10 hours.

*Deal Gang*

*and*

*Sulky Plows,*

*Wagons,*

*Harrows*

*of all kinds,*

*and Sleighs.*

Farmers will find it to their advantage to deal with us. The right goods at the right prices.  
Call or write for Catalogues. Agencies at all the principal points in the Province.

Head Office for Manitoba: COR. PRINCESS AND JEMIMA STS.,  
**WINNIPEG, MAN.**

of an article  
noicest malt

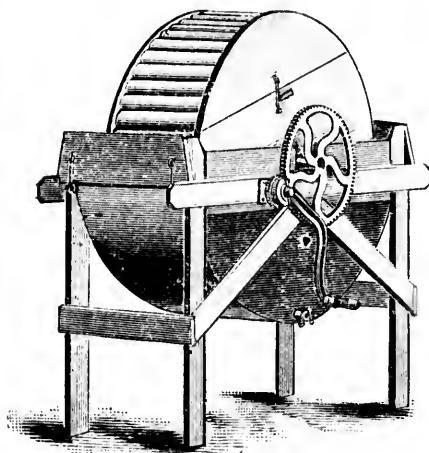
to visit and  
extensive in

the faculty  
will be found

Houses,

EG.

nnipeg.



Winnipeg, March 31st, 1892.

Mr. Thos. McCrossan :

Dear Sir,— We beg to say in reply to enquiry of this date, that the Manitoba Washer, manufactured by you, has been used in our homes for the last two months, and has given the greatest satisfaction. We can unhesitatingly recommend it as a most economical labor-saving machine, and we are confident that it has only to become thoroughly introduced to command a very large sale. Yours truly R. J. Whida, D. K. Elliot. All merchants wanting to handle these machines may write for particulars.

Victoria Hall, Winnipeg, Nov. 17, 1891.

We the undersigned saw Mr. McCrossan's small washing machine working, and testify that it does grand, good work, making the clothes ready in ten minutes for boiling, and with the second suds so white and clean that they did not require boiling, and a small child can work it, and we will recommend it to our friends. The washing consisted of white and colored shirts, collars and cuffs, aprons, night dresses, tablecloths, table napkins, handkerchiefs, waists, towels, etc. Mrs. J. S. Mills, Mrs. Stead, Mrs. H. Price, Mrs. G. H. McGregor, Mrs. W. R. Watson, Mrs. Conlry, Mrs. H. C. Moore, Mrs. R. McKiechan.

This Machine was first intended entirely for private use, but was so good that our friends advised putting it on the market; and now FIFTEEN DOLLARS will buy the best Washing Machine ever produced. It cleans perfectly every article from a shirt collar to quilts and blankets, and a small child can operate it. Our own business is Dry Goods, and we are prepared to give Real Bargains in Dress Goods and Trimmings, Trimmed Hats and Millinery Goods, Cottonades, Shirts, Tweeds, Blankets, Flannels, Fur Goods, and everything usually kept in a first class Dry Goods Store.

**McCROSSAN & CO., 566 Main Street, Winnipeg.**

# DICK, BANNING & CO.

MANUFACTURERS OF

## LUMBER,

Shingles and Lath, Doors and Sash.

MILLS AT KEEWATIN.

Office: OPPOSITE C. P. R. PASSENGER DEPOT,

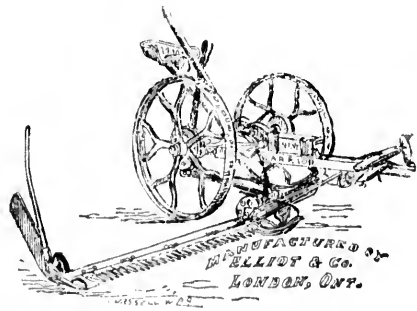
WINNIPEG.

---

## ANDERSON & CALVERT,

WHOLESALE AND RETAIL DEALERS IN ALL KINDS OF

### Agricultural Implements.



Visitors to the Exhibition will do well to come and inspect our large and well assorted stock of Farmers' Labor Saving Machinery comprising the American McCormick Binder, Mercer's Canvasless Binder, The American McCormick Mower, Elliott's Warrior Mower, American Rock Island Hay Loaders, American Rock Island Plows, Norwegian Plows, Wilkinson Plows, London Wagons, Cornell Engines and Advance Separators, Moody & Sons' Tread Power Threshers.

Office and Show Rooms, 146 Princess Street,  
opposite the Market. **WINNIPEG.**

**ANDERSON & CALVERT.**

CO.

R,

Sash.

DEPOT,

ERT,



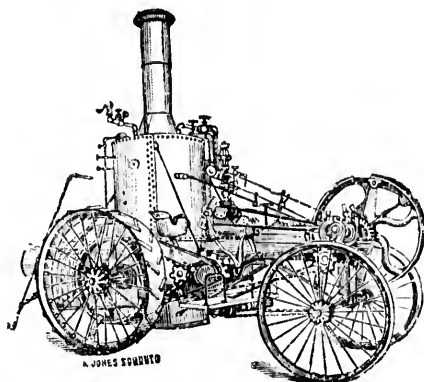
comprising the  
less Binder,  
t's Warrior  
rs, American  
nson Plows,  
vance Separ-  
s.

& CALVERT.

# The Waterous Engine Works Co. Ltd.

WINNIPEG, MANITOBA.

ENGINES.



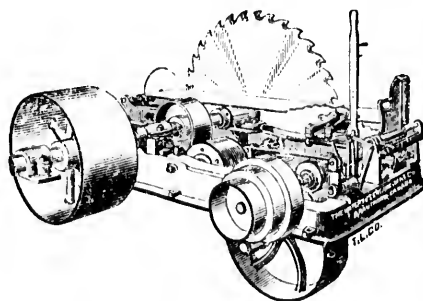
BOILERS.

## The Champion Threshing Engine

Portable and Tractor, 6, 12, 16 and 18 H.P.; Upright Sectional Boilers and  
Return Tubular Locomotive Fire Box Boilers.

PORTABLE AND STATIONARY

SAW



MILLS

Shingle Machines, Planers,  
**SAW MILL MACHINERY.**  
**The Pitts California Thresher.**

# The Hingston Smith Arms Company,

WINNIPEG.



WE ARE AGENTS AND CARRY A STOCK OF

## W. W. Greener's Celebrated Guns,

"The Ejector," "Facile Princeps," "The Forester,"  
in hammerless grades.

"The Far Killer," "Forester," "Trap" and "Dominion"  
in hammer grades.

We also have a stock of THOMAS BLAND & SONS' GUNS,  
of Remington, and other American makers.

WE ARE AGENTS FOR

The Winchester Repeating Arms Company.

The Marlin Fire Arms Company.

The Colts Patent Fire Arms Company.

The Union Metallic Cartridge Company.

The Dominion Cartridge Company.



## Cricket, Lawn Tennis, Lacrosse, Base Ball, Foot Ball,

AND OUTDOOR SPORTS OF ALL KINDS.

TENTS, RUBBER SHEETS, DECOYS, HAMMOCKS, WADING  
TROUSERS, &c.

We draw special attention to our ST. GEORGE RAZOR, every one of  
which we guarantee.

IF YOU WANT A BICYCLE SEE OURS  
BEFORE BUYING.

SEND FOR CATALOGUE TO

**The Hingston Smith Arms Co.**

# Parker's Steam Dye Works.

**Dyeing, Cleaning and Scouring.**

285 PORTAGE AVENUE,

WINNIPEG, MAN.

C. D. ANDERSON,

C. A. LEMIERRE.

**C. D. ANDERSON & CO.,**

Importers, Wholesale and Retail

**GROCCERS,**

245 MAIN STREET, WINNIPEG, a few doors South of Northern  
Pacific Depot and Hotel.

Highest Price paid for Butter, Eggs and all kinds of Country Produce.

## *Barbed Wire.*

Genuine Lock Barb.

Prompt Shipments.

Write for Prices.

Manufacturers of Galvanized Wire, Barbed Wire, Plain Twisted Wire,  
Hay Baling Wire, Staples.

*Visitors to Exhibition invited to visit Factory, Lombard Street.*

**MANITOBA BARB WIRE CO., Ltd.,**  
**WINNIPEG.**



G. F. CARRUTHERS.

ESTABLISHED 1874.

J. H. BROCK.

## CARRUTHERS & BROCK

*Insurance, Financial, Real Estate and Commission Agents.*

Plate Glass, Accident and Postal Insurance.

J. & J. Taylor, Toronto Safe Works, Safes and Vault Doors kept in stock.

Agents for Bicycles, High Wheels and Safeties—on easy terms, or a liberal discount for cash.

Rents Collected and Estates Managed.

**Address : 453 MAIN STREET, WINNIPEG.**

## CAMPBELL BROS.

530 MAIN STREET, WINNIPEG,

*IS THE CHEAPEST HARDWARE HOUSE IN WINNIPEG.*

Copp Bros. Stoves, Ranges and Furnaces

Take the lead for Cheapness, Style, Durability, Economy and Heating Capacity. Call and get prices.

## BENNETTO & CO.

PHOTOGRAPHERS AND ARTISTS,

WINNIPEG AND PORTAGE LA PRAIRIE.

If you are desirous of securing a perfect Photo, finished in first-class style, you cannot fail to be pleased by coming to us.

We enlarge and copy old Photos, and keep a large stock of Frames on hand. We will give you all grades of work, from the cheapest to the best.

Respectfully yours, BENNETTO & CO.

## IT WILL PAY YOU

WHILE IN THE CITY TO CALL ON

## GEO. RYAN,

Fine Boots and Shoes, Trunks,

AND

Valises, Mitts, Moccasins.

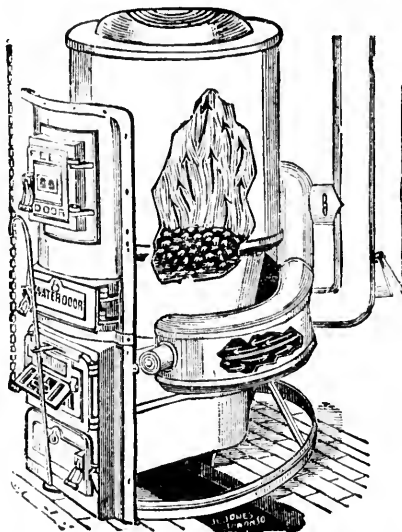
PRICES ALWAYS LOW.

**492 MAIN ST., WINNIPEG.**

TELEPHONE 770.



# WILSON & CO.



Wholesale Dealers in

Paints, Oils, Glass, Brushes, Stoves  
Furnaces and Tinware.

ARTISTS' MATERIAL A SPECIALTY.

SOLE AGENTS FOR

## CLARE BROS. & CO.

PRESTON, ONTARIO,

Manufacturers of Furnaces  
and Stoves.

## T. S. SIMMS & CO.,

ST. JOHN, N. B.

Brushes and Brooms.

PLATE GLASS INSURED.

SEND FOR PRICES AND CATALOGUE.

Address: 180 MARKET ST., E., WINNIPEG.

P.O. DRAWER, 1406.

## VISITORS TO THE EXHIBITION

Should not fail  
to visit the Mc-  
Clary Mfg. Co's  
Exhibit of their  
'FAMOUS'  
Ranges, Cook  
and Heating  
Stoves, Coal  
and Wood Fur-  
naces, Regis-  
ters, Tinware,  
&c.



THE LADIES ARE SPECIALLY INVITED.

If in want of a perfect Cook, Heating Stove or Furnace, be sure you ask for **McCLARY'S 'FAMOUS.'** Buy no other, and you will be perfectly satisfied. If you cannot get them from your dealer, write or call on us at our Show Rooms and Offices, 529 MAIN STREET, nearly opposite City Hall.

McClary Manufacturing Company, Ltd.

J. W. DRISCOLL, Manager.

London, Toronto, Montreal and Winnipeg.

# STEVENS & BURNS,

MANUFACTURERS OF

*Portable and Traction Engines*

AND

J. I. C. SEPARATORS.

ALSO AGENTS FOR

*THE ERTEL VICTOR HAY PRESS.*

*REPAIRS FOR OUR GOODS ALWAYS IN STOCK.*

---

For further particulars apply to Local Agents or

**STEVENS & BURNS.**

124 Princess St., or P.O. BOX 657, Winnipeg.

---

## **Grundy's Music House.**

When visiting the Exhibition look out for the display of W. GRUNDY & Co. in Pianos, Organs and Sewing Machines which will include

**KNABE PIANOS, FISCHER PIANOS,  
GERHARD HEINTZMAN PIANOS,  
BELL PIANOS, BELL ORGANS,**

Easy Partial payments. Every Instrument fully warranted, and every customer pleased  
Sheet Music, Music Books, Small Musical Instruments, and Musical  
Merchandise of every description.

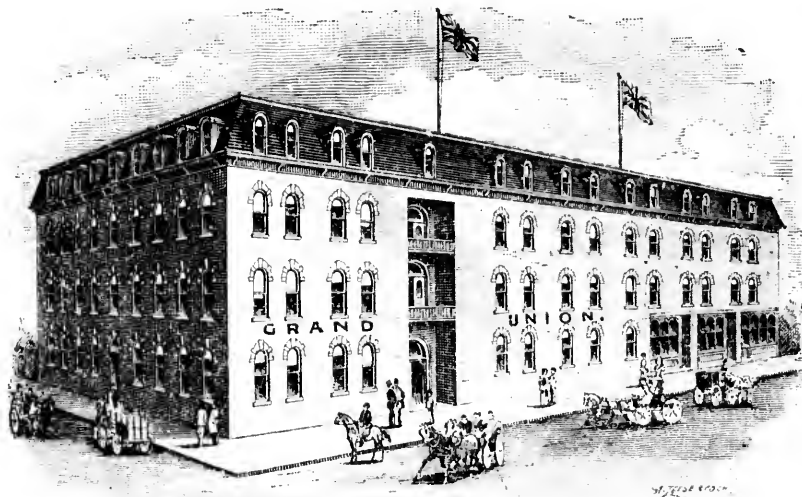
**NEW WILLIAMS SEWING MACHINES,  
WHITE SEWING MACHINES.**

Having the largest stock in the West, in our line, we are able to give better choice  
and value than elsewhere. Write or call for Illustrated Catalogues.

**W. GRUNDY & CO.,**

Warerooms: { 431 MAIN STREET, WINNIPEG, MAN.  
Saskatchewan Ave., Portage la Prairie, Man.  
Rosser Ave., Brandon, Man.

Address all communications to the Head Office, Winnipeg.



## GRAND UNION HOTEL.

JAMES O'DONOHUE, Prop.

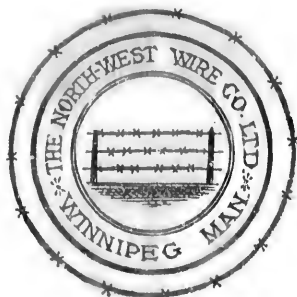
It is without doubt the most comfortable hotel in the city,  
Newly Furnished and Refitted. Lighted throughout with Electric Lights.  
THE MOST POPULAR HOTEL IN THE NORTHWEST.

## THE *Unequalled Doherty Organ.* EVANS BROS' PIANOS.

Fine Tone, Superior Finish.

Send for terms and prices if you are thinking of buying  
and save money, at Wholesale and Retail.

*O. E. MARCY, General Traveller,*  
WINNIPEG.



## BARBED WIRE.

Having erected a large factory in this city and fitted it with the latest improved machinery, we are prepared to furnish

### BARBED AND PLAIN TWIST WIRE.

AT LOWEST CURRENT PRICES.

Only the best quality of English Bessemer Steel Wire used. Every pound guaranteed. Ask for our Brand which is superior to all others.

**THE NORTHWEST WIRE CO. Ltd.**

WINNIPEG, MAN.

# Carsley & Co's.

## MANTLE ROOMS.

Largest Assortment  
and Latest Styles always in stock.

## SEAL PLUSH

Three-quarter and Long Coats,  
Plain and Fur Trimmed.

## FUR-LINED CIRCULARS

in Black and Colors.

## CLOTH JACKETS.

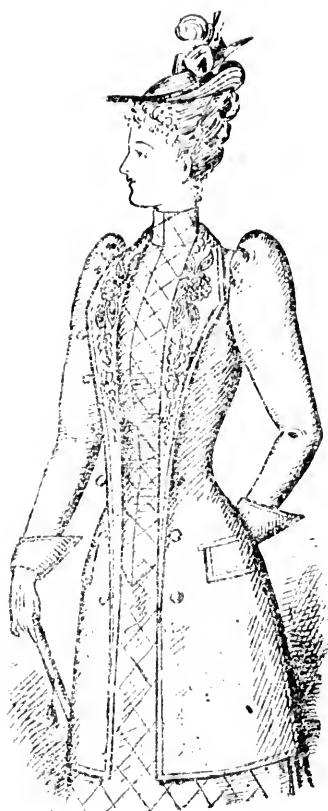
The Latest Style in three-quarter  
Jackets plain and Fancy.  
Ulsters all the Newest Styles.

## CHILDRENS' MANTLES

all sizes kept in Stock. Reefer  
Jackets all sizes.

Large Stock of Dress Goods,  
Linens, Hosiery, Gloves and General  
Dry Goods, at Lowest Prices.

Write or send for Samples.



## CARSLEY & CO.,

344 MAIN STREET, WINNIPEG.  
and 13 London Wall, London, Eng

## WHITE & MANAHAN,

THE LEADING

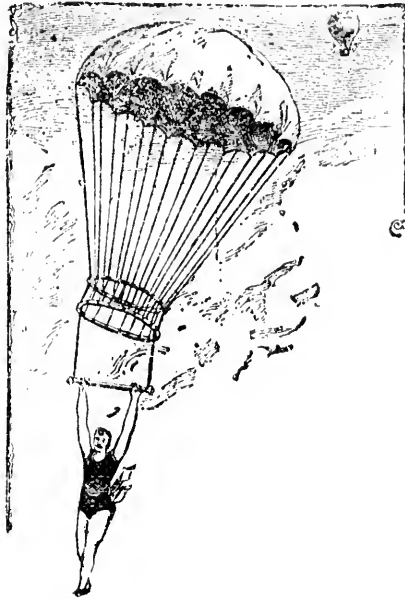
CLOTHING AND MENS'

## Furnishing House

496 MAIN STREET, WINNIPEG.

Letter Orders Promptly Attended to.

. . . GRAND . . .  
Balloon Ascension.



From 1,000 to  
5,000  
Feet in Height.

From which the Balloonist will  
leap with a Parachute,

THE GREAT AMERICAN AERONAUT  
Prof. T. I. Cash

HAS BEEN ENGAGED BY THE MANAGEMENT OF THE

*Winnipeg Industrial Exhibition.*

To make Two Sensational Balloon Ascensions and Two Parachute  
Descents at the Exhibition Grounds.

JULY 28th and 29th.

WIND AND WEATHER PERMITTING

As this is the first Parachute descent from a Balloon ever at-  
tempted in Manitoba, it will be an opportunity of a lifetime, and no  
one should fail to see this thrilling exhibition.



TELEPHONE 73.




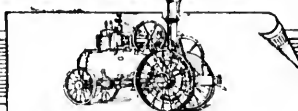
*First Prize Winnipeg Industrial Exhibition, 1891.*

**Steele & Wing,**

PHOTOGRAPHERS

474 MAIN STREET,  
*Cor. 2nd Ave. N. (late Bannington st.)*

WINNIPEG, MAN.

**H.S. WESBROOK**  

**DEALER IN**  
**AGRICULTURAL**  
**IMPLEMENT**  


  
 COMMISSIONS EXECUTED — CORRESPONDENCE SOLICITED  
**H.S. WESBROOK, WINNIPEG, MAN.**

**BLACKWOOD BROS.,**

WINNIPEG.

Manufacturers of . . . . .

**Ginger Ale, Club Soda, Lemonade, Ginger Beer,**

**Champagne Cider, Sasaparilla, Cream Soda, Lime Juice Champagne,**

**And all kinds of Aerated Waters and Fruit Syrups.**

*Awards: Medals, Paris 1875 Centennial 1876 and Diplomas, Quebec 1877, Manitoba 1880*

# Hudson's Bay Comp'y.

IF YOU would buy anything, at any time, or any price; If you would buy it where you would have the full benefit of long experience, ample capital, and immense range—

. . . Visit the Hudson's Bay Company.

IF YOUR confidence in your own judgment of the article to be purchased is limited, and you would avail yourself of the honest opinion of those who should know—

. . . Visit the Hudson's Bay Company.

IF YOU would trade with a store whose special pride it is, to sell only *Strictly Reliable* goods, to have only one price, and never to misrepresent—

. . . Visit the Hudson's Bay Company.

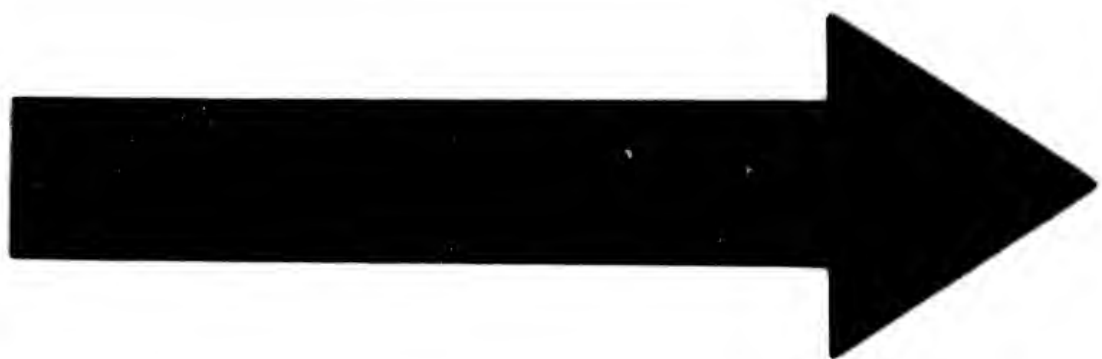
IF Having seen what you want there, you are not just ready to buy it, make a mental note of it, and when you need it,—

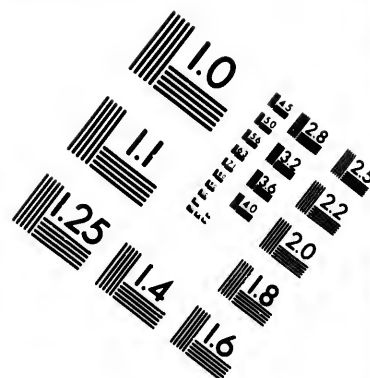
Write to The Hudson's Bay Company,

180-184 MAIN St.

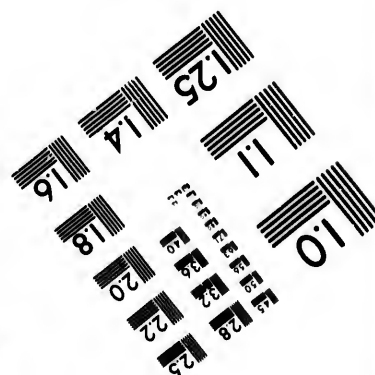
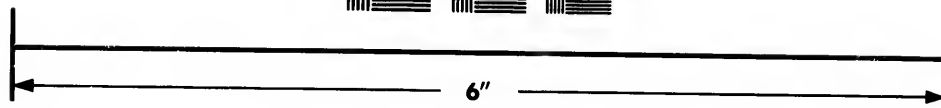
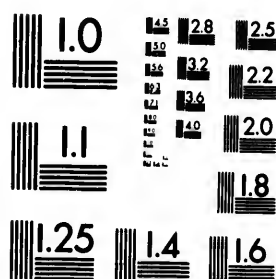
- - - WINNIPEG.







# IMAGE EVALUATION TEST TARGET (MT-3)



# Photographic Sciences Corporation

**23 WEST MAIN STREET  
WEBSTER, N.Y. 14580  
(716) 872-4503**



# REDUCED PRICES

—FOR—

## C.P.R. LANDS

---

Lands in the Province of Manitoba and in Assiniboia, east of third Meridian, have been subjected to reduction in price of from 25 to 33 per cent.

Lands West of the 3rd Meridian, including most of the valuable lands in the Calgary District, have been reduced to \$3 per acre.

C.P.R. Lands in the Saskatchewan, Battle and Red Deer River Districts are offered for sale at the uniform price of \$3 per acre.

**INTENDING PURCHASERS** who have not yet secured a Manitoba farm should remember that it will not take long at the present rate of selling to exhaust the company's lands in Manitoba.

For the convenience of investors the following maps, showing in detail the lands affected by the reduced prices, have been prepared and will be sent free to applicants:

A - - - - -	Central Manitoba	E - - - - -	Between 2nd and 3rd Meridian
B - - - - -	Western Manitoba	F - - - - -	Cypress Hills district
C - - - - -	Southern Manitoba	G - - - - -	Calgary district
D - - - - -	Coal Fields and Oxbow	H - - - - -	The Saskatchewan Valley

The lands shown on Maps A, F, G, H are sold at the uniform price of \$3 an acre.

---

For further particulars apply to

**L. A. HAMILTON,**

C. P. R. Land Commissioner, Winnipeg.

# S OS

and in  
objected to

cluding  
have been

, Battle  
le at the

e not yet  
t will not  
the com-

ng maps,  
ed prices,  
nts:

d 3rd Meridian  
s Hills district  
Calgary district  
chewan Valley

sold at the

innipeg.

