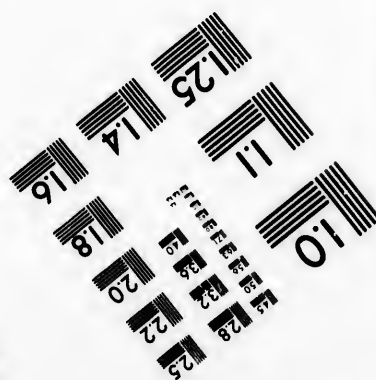
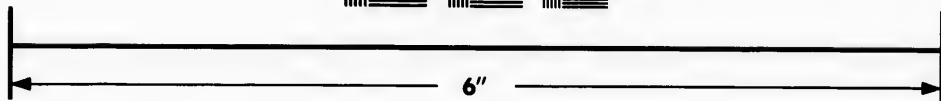
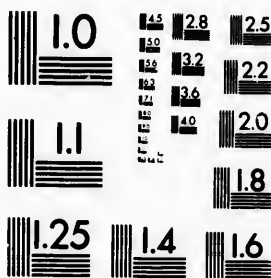
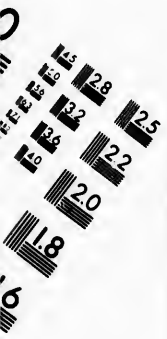


**IMAGE EVALUATION
TEST TARGET (MT-3)**



**Photographic
Sciences
Corporation**

23 WEST MAIN STREET
WEBSTER, N.Y. 14580
(716) 872-4503



**CIHM/ICMH
Microfiche
Series.**

**CIHM/ICMH
Collection de
microfiches.**



Canadian Institute for Historical Microreproductions / Institut canadien de microreproductions historiques



© 1981

Technical and Bibliographic Notes/Notes techniques et bibliographiques

The Institute has attempted to obtain the best original copy available for filming. Features of this copy which may be bibliographically unique, which may alter any of the images in the reproduction, or which may significantly change the usual method of filming, are checked below.

L'Institut a microfilmé le meilleur exemplaire qu'il lui a été possible de se procurer. Les détails de cet exemplaire qui sont peut-être uniques du point de vue bibliographique, qui peuvent modifier une image reproduite, ou qui peuvent exiger une modification dans la méthode normale de filmage sont indiqués ci-dessous.

- Coloured covers/
Couverture de couleur
- Covers damaged/
Couverture endommagée
- Covers restored and/or laminated/
Couverture restaurée et/ou pelliculée
- Cover title missing/
Le titre de couverture manque
- Coloured maps/
Cartes géographiques en couleur
- Coloured ink (i.e. other than blue or black)/
Encre de couleur (i.e. autre que bleue ou noire)
- Coloured plates and/or illustrations/
Planches et/ou illustrations en couleur
- Bound with other material/
Relié avec d'autres documents
- Tight binding may cause shadows or distortion
along interior margin/
La reliure serrée peut causer de l'ombre ou de la
distortion le long de la marge intérieure
- Blank leaves added during restoration may
appear within the text. Whenever possible, these
have been omitted from filming/
Il se peut que certaines pages blanches ajoutées
lors d'une restauration apparaissent dans le texte,
mais, lorsque cela était possible, ces pages n'ont
pas été filmées.
- Additional comments:/
Commentaires supplémentaires:

- Coloured pages/
Pages de couleur
- Pages damaged/
Pages endommagées
- Pages restored and/or laminated/
Pages restaurées et/ou pelliculées
- Pages discoloured, stained or foxed/
Pages décolorées, tachetées ou piquées
- Pages detached/
Pages détachées
- Showthrough/
Transparence
- Quality of print varies/
Qualité inégale de l'impression
- Includes supplementary material/
Comprend du matériel supplémentaire
- Only edition available/
Seule édition disponible
- Pages wholly or partially obscured by errata
slips, tissues, etc., have been refilmed to
ensure the best possible image/
Les pages totalement ou partiellement
obscurcies par un feuillet d'errata, une pelure,
etc., ont été filmées à nouveau de façon à
obtenir la meilleure image possible.

This item is filmed at the reduction ratio checked below/
Ce document est filmé au taux de réduction indiqué ci-dessous.

| | | | | | |
|--------------------------|--------------------------|--------------------------|-------------------------------------|--------------------------|--------------------------|
| 10X | 14X | 18X | 22X | 26X | 30X |
| <input type="checkbox"/> | <input type="checkbox"/> | <input type="checkbox"/> | <input checked="" type="checkbox"/> | <input type="checkbox"/> | <input type="checkbox"/> |
| 12X | 16X | 20X | 24X | 28X | 32X |

The copy filmed here has been reproduced thanks to the generosity of:

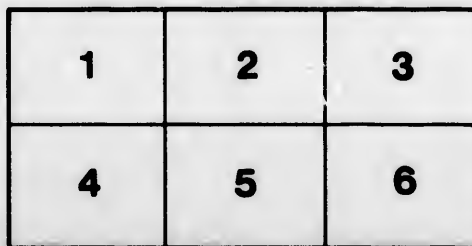
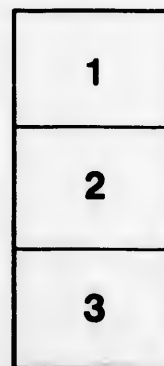
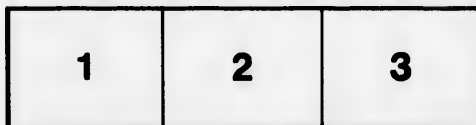
University of British Columbia Library

The images appearing here are the best quality possible considering the condition and legibility of the original copy and in keeping with the filming contract specifications.

Original copies in printed paper covers are filmed beginning with the front cover and ending on the last page with a printed or illustrated impression, or the back cover when appropriate. All other original copies are filmed beginning on the first page with a printed or illustrated impression, and ending on the last page with a printed or illustrated impression.

The last recorded frame on each microfiche shall contain the symbol \rightarrow (meaning "CONTINUED"), or the symbol ∇ (meaning "END"), whichever applies.

Maps, plates, charts, etc., may be filmed at different reduction ratios. Those too large to be entirely included in one exposure are filmed beginning in the upper left hand corner, left to right and top to bottom, as many frames as required. The following diagrams illustrate the method:



L'exemplaire filmé fut reproduit grâce à la générosité de:

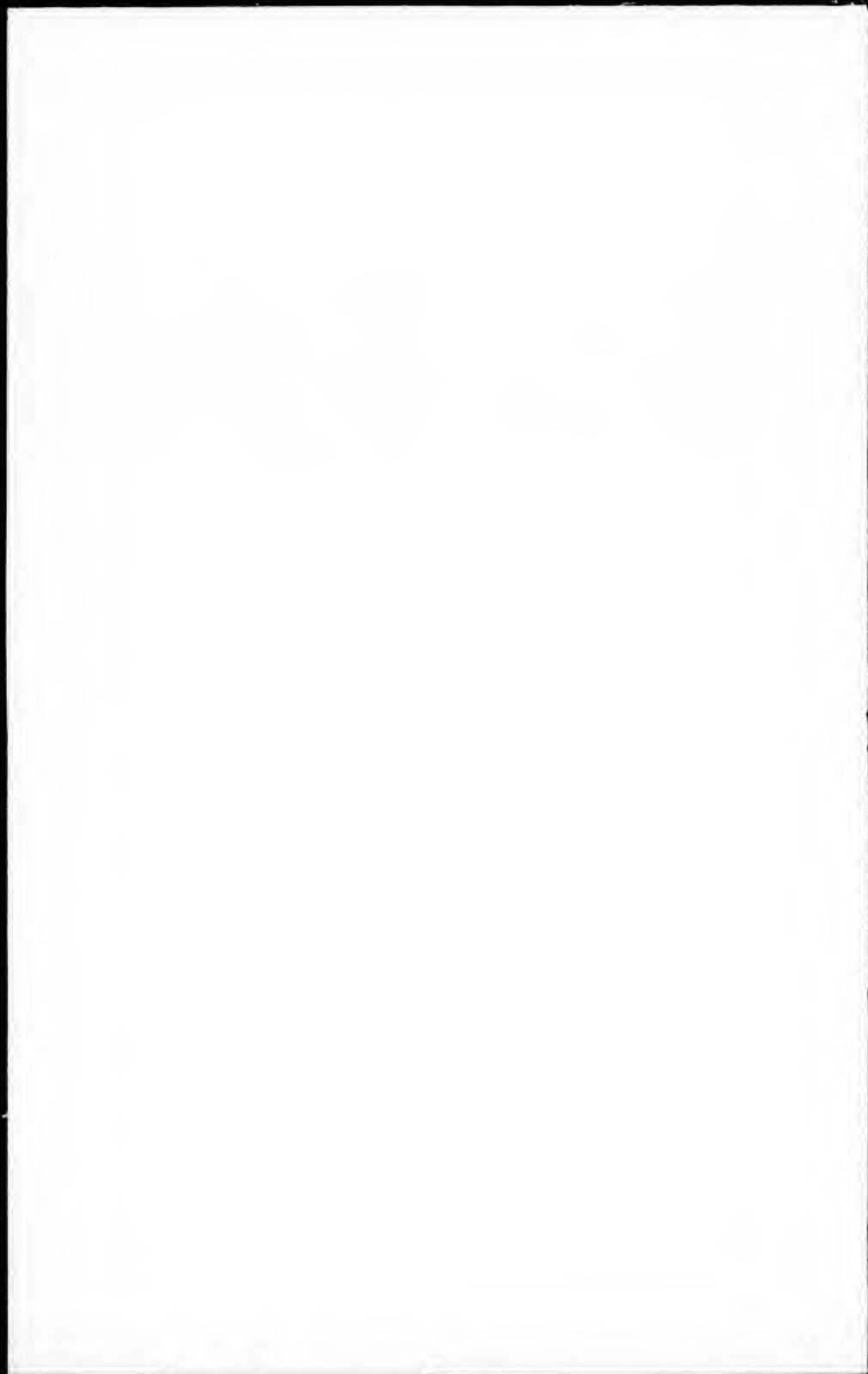
University of British Columbia Library

Les images suivantes ont été reproduites avec le plus grand soin, compte tenu de la condition et de la netteté de l'exemplaire filmé, et en conformité avec les conditions du contrat de filmage.

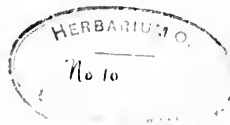
Les exemplaires originaux dont la couverture en papier est imprimée sont filmés en commençant par le premier plat et en terminant soit par la dernière page qui comporte une empreinte d'impression ou d'illustration, soit par le second plat, selon le cas. Tous les autres exemplaires originaux sont filmés en commençant par la première page qui comporte une empreinte d'impression ou d'illustration et en terminant par la dernière page qui comporte une telle empreinte.

Un des symboles suivants apparaîtra sur la dernière image de chaque microfiche, selon le cas: le symbole \rightarrow signifie "A SUIVRE", le symbole ∇ signifie "FIN".

Les cartes, planches, tableaux, etc., peuvent être filmés à des taux de réduction différents. Lorsque le document est trop grand pour être reproduit en un seul cliché, il est filmé à partir de l'angle supérieur gauche, de gauche à droite, et de haut en bas, en prenant le nombre d'images nécessaire. Les diagrammes suivants illustrent la méthode.



CATALOGUE



OF

North American Musci.

...

ARRANGED BY

EUGENE A. RAU, AND A. B. HERVEY, A. M.

...

TAUNTON:

PRINTED AT GAZETTE JOB OFFICE.

1880.

147981

E. B. Chamberlain



CATALOGUE
OF
North American Musci.

ARRANGED BY

EUGENE A. RAU, AND A. B. HERVEY, A. M.

TAUNTON:
PRINTED AT GAZETTE JOB OFFICE,
1880.

Copyrighted by
EUGENE A. RAU, and A. B. HERVEY,
1879.

PREFACE.

In introducing this Catalogue of American Mosses, the compilers believe that they are supplying a want which has long been felt by American Botanists. It is designed to be a convenient check and exchange list, and a basis for arrangement of genera, &c., in herbaria.

The classification is mainly that adopted by Prof. Schimper in his Synopsis of European Mosses.

All the authentic species and varieties reported, from Mexico to the Arctic regions, have been included and their habitats given with as wide a range as the examination of references and several good herbaria would permit.

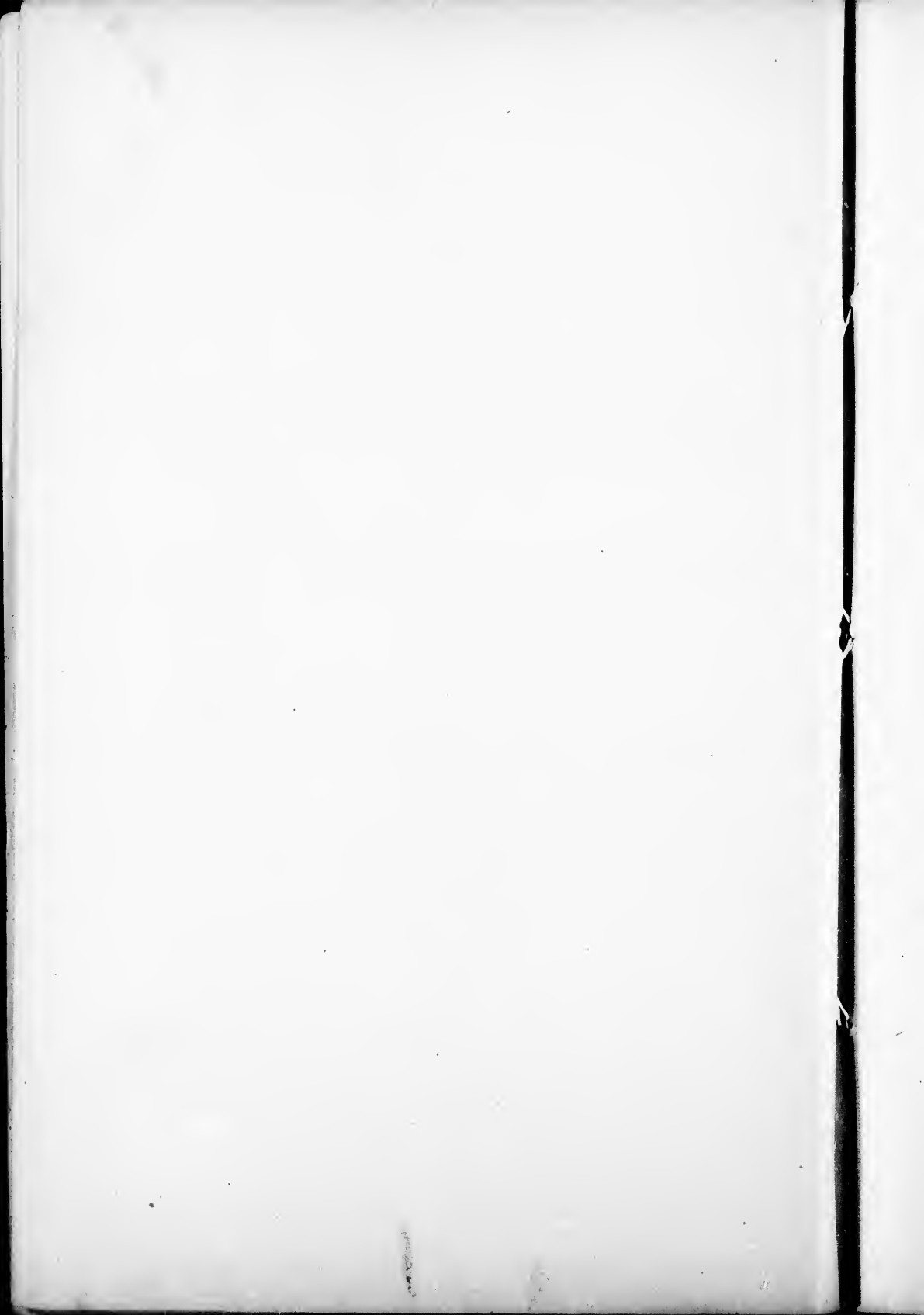
Some plants hitherto classified as species are given in this list as varieties. Doubtful species so far as known, when admitted have been marked with a star.

We have to acknowledge our indebtedness to Prof. C. H. Peek, the distinguished State Botanist of New York, for many valuable suggestions. The late Mr. C. F. Austin, whose recent death deprives American Bryologists of one of their most zealous, acute and accomplished co-laborers, kindly gave us much assistance in the work. To Mr. Chas. Mohr of Mobile, Alabama, we are indebted for lists of the Mosses from the Gulf States, Mexico and the Pacific Coast, represented in his herbarium.

The Index Generum will be found on page 50, Erata on page 52.

EUGENE A. RAU, Bethlehem, Pa.

A. B. HERVEY, Taunton, Mass.



MUSCI.

Series I. ACROCARPÆ.

Order I. CLEISTOCARPÆ.

Tribe I. PHYSCOMITRIOIDÆ.

Family I. EPHEMERÆ.

1. EPHEMERUM, *Hpe.*
- | | |
|------------------------------------|-------------------------------------|
| 1. serratum <i>Hpe.</i> , | N. E., Mid. Sts., O., Br. Am., Cal. |
| 2. crassinervium <i>Hpe.</i> , | No. U. S. |
| 3. *hystrix <i>Lindbg.</i> , | N. J. to Fla. |
| 4. *papillosum <i>Aust.</i> , | N. J. to S. C. |
| 5. cohærens <i>Hpe.</i> , | O., Pa. |
| 6. *pallidum <i>Sch.</i> , | Ohio. |
| 7. spinulosum <i>B. & S.</i> , | Common. |

Family II. PHYSCOMITRELLÆ.

2. NANOMITRIUM *Lindbj.*, (*Micromitrium* and *Synpoma* *Aust.*)
- | | |
|---|--------------|
| 8. tenerum (<i>Bruch.</i>) <i>Lindbj.</i> , (<i>megalosporum</i> <i>Aust.</i>), | N. J., Pa. |
| 9. Austini (<i>Sull.</i> <i>Aust.</i>) <i>Lindbj.</i> , | N. Y., N. J. |
| 10. synoicum (<i>Jas.</i> <i>Aust.</i>) <i>Lindbj.</i> , | N. J., Pa. |
3. PHYSCOMITRELLA *Sch.*
- | | |
|-----------------------------|------|
| 11. patens <i>Br. Eu.</i> , | Ohio |
|-----------------------------|------|

Tribe II. POTTIOIDEA.

Family I. PHASCACEÆ.

4. SPILERANGIUM *Sch.*
- | | |
|----------------------------------|-------------------------------|
| 12. rufescens <i>Jaeger.</i> , | N. J. to S. C., O. |
| 13. muticum <i>C. M.</i> , | N. Y., N. J., Pa., Ill., Cal. |
| 14. Schimperianum <i>Sull.</i> , | Tex., Ill. |
5. PHASCUM *L.*
- | | |
|---------------------------------|----------------------------------|
| 15. cuspidatum <i>Schreb.</i> , | N. J. to S. C., Ill., Cal. |
| " var. piliferum, | N. J. to S. C., Ill., Cal., Col. |

16. *bryoides* Dicks., var. *piliferum*. Cal. Col.
 17. *Carniolicum* W. & M., Col.

Tribe III. BRUCHIACEÆ.

Family I. PLEURIDIÆ.

6. **PLEURIDIUM** Brid.
 18. *subulatum* (Schreb.), Lindb. (*P. alternifolium* Brid.), U. S.
 19. *Ravenelii* Aust. (*P. subulatum* Sull. Mosses.) N. J. to R. I., S. C.
 20. *stramineum* Lx., Pacific Coast.
 21. *Sullivanii* Aust. (*P. nerrosus* Sull. Icon. non Hook.), Pa. to S. C.

Family II. BRUCHIÆ.

7. **SPORLEDERA** Hpe.
 22. *palustris* Sch. N. J., Mass., La.
8. **BRUCHIA** Schwg.
A. Calyptra smooth.
 23. *Bolanderi* Lx., Cal.
 24. **Marylandica* Aust., Md.
 25. *flexuosa* Schwg. (Sull. Mosses), O.(?), Ill., So. Sts.
 26. *Sullivanii* Aust. (*B. flexuosa* Sull. Icon. T. 13, also *B. Beyrichiana*
Hpe., Sull., Icon., suppl. T. 15), N. E. to Fla., Ill.
 var. *brevicollis* (*B. brevicollis* L. & J.), S. C.
 27. *Donnellii* Aust., S. C., Fla., Ala.
 28. **nigrescens* Lx., Ala.
 29. *Texana* Aust., Va. to Tex.
 30. *Hallii* Aust., Va. to Tex.
 31. *brevipes* Hook., S. C., Ala., La.
 32. *brevifolia* Sull., Va., S. C., Ala., La., TX.
 33. **microcarpa* Wils., La.
- B. Calyptra papillose.*
 34. *Carolineæ* Aust., S. C.
 35. *Ravenelii* Wils., S. C. to Ala.
 36. **Schwagrigheni* Hpe., La.

Order II. STEGOCARPÆ.

Tribe I. WEISIACEÆ.

Family I. WEISIEÆ.

9. **SYSTEGIUM** Br. Eu.
 37. *crispum* Hedw., Ind., Ill., Tex.
 38. *Sullivanii* Sch., N. Y., Pa., O., Ill.
 39. *nitidulum* Sch., N. J. to Ill. and Va.

40. *Ludovicianum* Sull., Fla., Ala., Ia.
 41. *erythrostegium* B. & S. (*S. Ludovicianum* Sull.) Ia.
10. *HYMENOSTOMUM* R. Br.
 42. *microstomum* R. Br., N. J., O., Tex.
11. *GYROWEISIA* Sch.
 43. *tenuis* Schrad., No. America.
12. *GYMNOSTOMUM* Br. Eu.
 44. *calcareum* N. & H., N. Y., O.(?), Br. Am.
 " var. *perpusillum* Sull., Cal.
 45. *rupesstre* Schwg., s No. U. S., Br. Am., Col.
 46. *curvirostrum* Hedw., s No. U. S., Pacif., Br. Am.
 47. *tophaecum* Aust., Tex.
 48. **Clintoni* Aust., N. Y.
 49. *Orizabanum* Sch., Mex.
 50. *incurvans* Sch., Mex.
13. *ANGECTANGIUM* Schwg.
 51. *Peckii* Sull., Catskill Mts.
 52. *Liebmanii* Sch., Mex.
 53. *apiculatum* Sch., Mex.
 54. *Brentilianum* B. & S., Mex. and No. W. Coast.
 55. *Hornschuchianum* Funk, No. W. Coast.
 56. *glaucescens* Sch., Mex.
 57. *condensatum* Sch., Mex.
14. *WEISIA* Hedw.,
 58. *viridula* Brid., U. S., Br. Am.
 " var. *Raucae* Aust., Pa., Col.
 " " *Brandegei* Aust., Col.
 " " *Wolfii* L. & J., Ill.
 " " *australis* Aust. (*W. lanuginosa* L. & J.), Fla. to Tex.
 59. *mucronata* Bruch., Ill.
 60. *barbulacea* C. M., Mex.
15. *DICRANOWEISIA* Lindby. (*Weisia* Hedw.),
 61. *crispula* Hedw., Pac. Coast, Br. Am., G'land.
 62. *cirrhatu* Hedw., " " "
16. *OREOWEISIA* Sch. (*Weisia* Hedw.),
 63. *seriulata* Funk, Mid. Sts., Col.
17. *RIHADOWEISIA* Sch.
 64. *fugax* B. & S., N. Y., N. J., Whit. Mts., Br. Am.
 65. *denticulata* B. & S., N. E. and Mid. Sts., N. C.
 66. *vulcanica* C. M., Mex.

Family II. DICRANEÆ.

18. *CYNODONTIUM* Sch.
 67. schisti (Oed.) Rky. Mts., G'land.
 68. gracilescens W. & M., Rky., Wht. and Adirod'k Mts.
 " var. tenellum, Wht. Mts.
 69. polycarpum Ehr., N. Y., N. W. Br. Am., Gt. Lakes.
 70. virens Hedw., N. Y., Pa., Col., Br. Columb., G'land.
 " var. Wahlenbergii, Br. Am.
 " " serratum, Col., Pac. Coast.
19. *DICHOONTIUM* Sch., (*Dicranum*.)
 71. pellucidum (L.) N. Y., N. J., Br. Am., Col.
 " var. fagimontanum, Vt., Col.
 " " serratum, Col., Vanc'r I.
20. *TREMATODON* Michx.
 72. longicollis Rich., N. J. to Fla., O., Ill., Ala., La., Mex.
 73. uncinatus C. M., Mx.
 74. ambiguus Hedw., Md. to Canada, O.
 75. nitidulus Sch., Mex.
21. *MICRODUS* Sch.,
 76. Liebmanni Sch., Mex.
 77. ovatus Besch., Mex.
 78. Sartorii Sch., Mex.
 79. longirostris Sch., Mex.
22. *ANGSTROMIA* B. & S.
 80. vulcanica C. M., Mex.
 81. longipes Sommf., No. Am.
23. *DICRANELLA* Sch.
 A. Squarrosa.
 82. crispa Hedw., Br. Am., Pac. Coast.
 83. Schreberi (Hedw.), Mid. Sts., Br. Am.
 " var. occidentalis Aust., Or., Vanc'r I.
 84. cerviculata (Hedw.), N. J., Wht. Mts., N. Bruns'k.
 85. *Canadensis, Mitt., Br. Am.
 86. Mulleri Sch., Mex.
 87. compacta Sch., Mex.
 B. Secunda. Ohio.
 88. varia (Hedw.), U. S., Br. Am.
 89. rufescens Turn., Mid. Sts., Nor'd and West'd.
 90. subulata (Hedw.), Wht. Mts., Pac. Coast, Br. Am.
 91. heteromalla Hedw., No. and East. U. S., Pac. Coast.
 " var. orthocarpa C. M., Mid. Sts.
 " " orthophylla Aust., Ohio.
 92. exigua Schweg. (*D. debile* W.), Gulf Sts., S. C.

- 93. Liebmanniana C. M., Mex
- 94. brachyblepharis C. M., Mex.
- 95. pilopogon C. M., Mex.
- 96. trematodontifolia C. M., Mex.
- 97. microdonta Sch., Mex.
- 98. Sartorii C. M., Mex.

- 24. DICRANUM Hedc.
 - A. Fulvella.
 - 99. fulvellum Dicks. (Arctoa), N. Y., Wh. Mts., G'land.
 - B. Falcata.
 - 100. Starkii W. & M. (D. Blythii W. & M.), Wh. and Adirond'k }
Mts., Br. Am., G'land. }
 - 101. caespitans Sch., Mex.
 - C. Orthocarpum.
 - 102. montanum Hedc., Mid. Sts. and West'd, Br. Am.
 - 103. viride S. & L. (strictum S. & L.), N. & E. U. S., Br. Am., P. Cst.
 - 104. flagellare Hedc., Mid. Sts., Br. Am., Mex.
 - 105. albicans B. & S. (D. cuneata Hedc.), Pacific Coast.
 - 106. fulvum Hook. (D. interruptum Br. Eu.), No. & E. U. S., Br. Am.
 - 107. longifolium Hedc., Mid. Sts., Br. Am.
 - D. Scoparia.
 - 108. elongatum Sch. (D. Macouni Aust.), N. E. to Rky. Mts. and }
G'land. }
 - 109. fuscescens Turn. (D. congestum Brid.), Mts. of Pa., N. E., }
N. Y. to Rky. Mts., Br. Am., G'land. }
 - 110. Muhlenbeckii B. & S., N. J., Br. Am., Col., G'land.
 - 111. fragillifolium Lind., Br. Am.
 - 112. scoparium L., U. S., Br. Am.
 - var. orthophyllum, Appalachian, G'land.
 - " curvulum, "
 - " paludosum, "
 - " recurvatum, "
 - " rupestre, "
 - " orthocarpum, "
 - 113. majus Turn., Pacific Coast.
 - 114. arcticum Sch., G'land, Labrador.
 - 115. scoparioides Sch., Mex.
 - 116. Mexicanum Sch., Mex.
 - E. Undulata.
 - 117. palustre L. Pl., East., Mid. & No. Sts., Br. Am., Pacific.
 - var. (D. Brewerianum Lx.), Pacific.
 - 118. Schraderi Schleg., Mid. Sts. to Cal., Br. Am.
 - 119. spurium Hedc., Mid. Sts., Cal., Br. Am.
 - var. (D. condensatum Hedc.), Mid. Sts. to Fla., Gulf Sts., }
Br. Am. }
 - 120. undulatum Voil., E. and Mid. Sts., No'd and West'd.

121. *elatum* Lindbg. (*D. Drummondii* C. M., *D. robustum* Blytt.), (N. E. and Mid Sts., Br. Am.)
 122. *rhabdocarpum* Sull., Rky. Mts., U. S., Mex.
 123. *Andrieuxii* Besch., Mex.
 124. *lophonenron* C. M., Mex.
 125. *Richardsoni* Hook., G'land.
 126. *cryptocarpum* C. M., Mex.
25. **ATRACHYLOCARPUS** Mitt.
 127. *Mexicanus* Mitt., Mex.
26. **DICRANODONTIUM** B. & S.
 128. *longirostre* B. & S., Pa. O.
 129. *nitidum* Jas. (*D. longifolium* Hedw. fide Aust.), Wht. Mts.
27. **CAMPYLOPUS** Brid.
Folia epilifera.
 130. *flexuosus* Brid. (*C. Tallulensis* S. & L.), Ga., N. C.
 131. *leanus* Sull., Mid. Sts. and Westward.
 132. *pusillus* Sch., Mex.
 133. *Vitzliputzli* Ltz., Mex.
 134. *leucogaster* C. M., Mex.
 135. *subleucogaster* C. M., Ala.
 136. *bicolor* Sch., Mex.
 137. *flagellaceus* C. M., "
 138. *Chrismani* C. M., "
 139. *Hallerianus* Hpe., "
 140. *Raueri* Aust., Colorado.
 141. *Hallii* Lr., "
 142. *frigidus* Lr., "
 143. *Donnellii* Aust., Ala., Fla.
 144. *gracilicaulis* Mitt., Fla., Mex.
 145. *angustiretis* Aust., Fla.
 146. *Virginicus* Aust., Va.
Folia pilifera.
 147. *hevigatus* Sch., Mex.
 148. *lamellicosta* Sch., Mex.
 149. *Liebmanni* Sch., Mex.
 150. *Richardi* Schwey. (*C. nivescens* Duby.), Mex.
 151. *strictus* Sch., Mex.
 152. *pilosissimus* Sch., Mex.
 153. *luridus* Sch., Mex.
 154. *introflexus* Hedw. (*C. polytrichoides* D. N., *C. leucentrichus* S. & L., *lutescens* Sch.), Ala.)
28. **CAMPYLOCILETIUM** Besch.
 155. *Mexicanum* Besch., Mex.
 156. *Selowii* Hornsch. (*Angstroemia Hallerianum* C. M.), "

29. *PILOPOGON* *Brid.*
 157. *calycinus* *Sch.*, Mex.
 158. *Molrii* *C. M.*, Mex.
30. *HOLOMITRUM* *Brid.*
 159. *serratum* *C. M.*, Mex.

Tribe II. LEUCOBRYACEÆ.

Family I. LEUCOBRYEÆ.

31. *LEUCOBRYUM* *Hpe.*
 160. *glaucum* *Hpe.*, U. S., Br. Am.
 var. minus (*Hpe.*), So. U. S., Mex.
32. *OCTOBLEPHARUM* *Hedw.*
 161. *album* *Hedw.*, Gulf Sts., Mex.

Tribe III. FISSIDENTACEÆ.

Family I. FISSIDENTEÆ.

33. *FISSIDENS* *Hedw.*
 A. Fruit terminal.
162. *hyalinus* *H. & W.*, Ohio.
 163. *obtusifolius* *Wils.*, Ohio, Col.
 164. *incurvus* *Schw. (F. limbatus Sull.)*, Gulf Sts., Cal.
 var. exiguus (*Sull.*), Mid. Sts.
 " *synoiens* (*Sull.*), Mid. Sts.
 " *monoicus* *Aust.*, N. J.
 " *minutulus* *Sull.*, U. S., Br. Am.
 " *longipes* *Aust.*, Vancouver's I.
165. *Floridanus* *L. & J.*, Fla.
 166. *bryoides* *Hedw.*, E. W. Mid. Sts., Col.
 167. *Ravenelii* *Sull.*, Car. to Fla., Ala.
 168. *osmundioides* *Hedw.*, E. Mid. W. Sts., and Br. Am.
 169. *Garberi* *Jas.*, Fla.
 170. *Donnellii* *Aust.*, Fla.
 171. *Texanus* *Aust. (F. Hallii. Aust.)*, Tex.
 172. *tortilis* *Hpe.*, Mex.
 var. scalpellatus *C. M.*, Mex.
 173. *circinans* *Sch.*, Mex.
 174. *ventricosus* *Lx.*, Cal.
 175. *Closteri* *Aust.*, N. J.
 176. *subereniatus* *Sch.*, Mex.

B. Fruit axillary.

177. *subbasilaris* Hedw., No. and Mid. Sts., Ohio, Ala.
 178. *taxifolius* Hedw., Mid. Sts., Ohio, Ala.
 179. *adiantoides* Hedw., No. and E. U. S., Pac. Coast, Br. Am.
 var. rupestris (*F. rupestris* Wils.), Mid. Sts.
 180. *polypodioides* Hedw., Mex., La., Fla., Ga.
 181. *grandifrons* Brid., N. Y., No. W. to Rky. Mts., Br. Am., Pac.
 var. strictus Besch., Mex.
 182. *decepiens* D. N., Fla., Ohio, Ill., Ontario.
C. Sterile.
 183. *Bourgeanus* Besch., Mex.
34. *CONOMITRIUM* Mont.
 184. *Julianum* Mont., N. E., Mid. and W. Sts., Fla., Ala.
 var. Mexicanum Sch., Mex.
 185. *Hallianum* S. & L., N. J., Ill., Fla.
 186. *reticulosum* C. M., Mex.

Tribe IV. SELIGERIACEÆ.

Family I. SELIGEREÆ.

35. *ANODUS* B. & S.
 187. *Donianus* B. & S., N. Y., and Br. Am.
36. *SELIGERIA* B. & S.,
 188. *tristichia* B. & S., Ohio.
 189. *recurvata* B. & S., N. Y., N. J., Pa., Br. Am.
 190. *globifera* Hpe., Mex.
 191. *pusilla* B. & S., Mo., Br. Am.
 192. *calcareæ* (Dicks.), Ohio.
37. *BLINDIA* B. & S.
 193. *acuta* Br. Eu., Catskill Mts. and No. to G'land.
38. *CAMPYLOSTELIUM* B. & S.
 194. *saxicola* W. & M., N. E. Sts., N. J., Ky.

Tribe V. CERATODONTACEÆ.

Family I. CERATODONTEÆ.

39. *CERATODON* Brid.,
 195. *purpureus* Brid., No. U. S., to Pac. Coast, Br. Am.
 var. aristatus, N. J., Pa.
 " *xanthopus*, Rky. Mts., Cal.
 196. **minor* Aust., British Columbia.
 197. *stenocarpus* B. & S., Mex.
 198. *perichætiæ* Sch., Mex.

40. *TRICHODON Sch.*
 199. *cylindricus Aust.*, Vanc'r I.
 200. *nodulosus Aust.*, N. Y., N. J.

Family II. LEPTOTRICHEÆ.

41. *LEPTOTRICHIUM Hpe. (Trichostomum B. & S.)*
 201. *tortile Schrad.*, N. E., No. and W. Sts., Ala., Br. Am.
 " *var. pusillum.* N. Y., Pa.
 202. *tenue Swartz (T. vaginans Sull.)*, N. E. Sts. to Mo., Br. Am.
 203. *flexicaule (Schweg.)*, Pac. Coast., Br. Am.
 " *var. erosum Aust.*, Br. Am.
 204. *pallidum (Schreb.)*, Atl., Gulf and West. Sts., Br. Am.
 205. *glaucescens (Hedw.)*, Mid. and E. Sts., Br. Am., Col.
 206. *Schimperi Lc.*, Pac. Coast.
 207. *heteromallum Lindbj., (L. Sullivantii Aust.)* Whit. Mts.
 208. *leptocarpum Sch.*, Mex.
 209. *Mexicanum Sch.*, Mex.
 210. *Mittenii Besch.*, Mex.
 42. *SYMBLEPHARIS Mont.*
 211. *helicophylla Mont.*, Mex.
 212. *Chiasmari C. M.*, Mex.

Family III. DISTICHEÆ.

43. *DISTICHUM B. & S.*
 213. *capillaceum B. & S.*, No. E. U. S., Br. Am., Pac., Rky. Mts.
 214. *inclinatum B. & S.*, Ohio., No. and West., Col.

Tribe VI. EUSTICHLACEÆ.

Family I. EUSTICHLÆ.

44. *EUSTICHIUM Brid.*
 215. *Norvegicum Br. En.*, O., Pa., Ky., Mex.

Tribe VII. POTTIACEÆ.

Family I. POTTIÆ.

45. *PHAROMITRIUM Sch.*
 216. *subsessile Sch.*, Br. Am., Col.
 217. *exiguum Aust.*, Tex., Ill.
 46. *POTTIA Ehrh.*
 A. Capsule gymnostomous or nearly so.
 218. *cavifolia (Dicks.)*, Pac. Coast, Col.
 219. *minutula (Schweg.)*, Texas.

220. *truncata* (L.), N. E. and Mid. Sts.
var. *subcylindrica*, Br. Am.
221. *Heimii* Hedw., Br. Am., Col., Pac. Coast.
222. *subsessilis* B. & S., Pac. Coast.
223. *riparia* Aust. (*Didymodon* ?), Mid. Sts.
224. *Mexicana* Hpe., Mex.
225. *exiguum* Aust., Tex., Ill.
B. Capsule bearing a distinct peristome.
226. *Starkeana* (Hedw.), Pac. Coast.
227. *latifolia* (Schw.), Br. Am., Rky. Mts., Cal.
47. DIDYMODON Hedw.
228. *rubellus* (Roth.), U. S., Br. Am.
229. *luridus* Horn., Niag. Falls.
230. *cylindricus* (Bruch.), Mid. Sts.
231. *Mexicanus* Besch., Mex.
232. *aeuus* Sch., Mex.
233. **diversifolius* Aust. (*Trichostomum tophaceum* Brid. var. ?), N. Y.

Family II. TRICHOSTOMEÆ.

48. TRICHOSTOMUM Sm.
234. *tophaceum* Brid., Pac. Coast, Col., N. Y., O.
235. *rigidulum* Sm., Br. Am., Pac. Coast.
236. *crassinervium* Hpe., Pac. Coast.
237. *anomalum* Sch., Br. Am., Pac. Coast.
238. *flexipes* B. & S., Pac. Coast.
239. *corniculatum* Wahl., Pac. Coast.
240. *dieranelloides* Sch., Mex.
241. *campylocarpum* C. M., Mex.
242. *obtusifolium* Hpe., Mex.
243. *crispulum* Br., Mex.
244. *subanomalum* Besch., Mex.
245. *Bescherellii* Sch., Mex.
246. *ramulosum* Sch., Mex.
247. *rubiginosum* Mitt., Br. Am.
248. *ulocalyx* C. M., Mex.
249. *stellatum* C. M., Mex.
250. *luteolum* Besch., Mex.
251. *luridum* Horn., About the Gt. Lakes.
252. *macrostegium* Sull., Ala., Ia.
253. **scitulum* Aust. (*Leptotrichum* ?), N. J.
254. *subdenticulatum* Aust., Fla.
255. **Coloradense* Aust., Cal.
256. *chlorophyllosum* C. M., Mex.
257. *flavo-virens* Bruch. (*Barbula tortifolia* Jas.), Fla.

- d. Sts.
r. Am.
Coast.
Coast.
d. Sts.
Mex.
x., Ill.
49. CALYMPERES *Sac.*
258. *disciforme C. M.*, Fla., Mex.
259. *Richardi C. M.*, Fla., Mex.
260. *Donnellii Aust.*, Fla.
261. **filigerum Aust.*, Fla.
50. SYRRIPODON *Schw.*
262. *crispus Aust.*, Fla.
263. *parvulus Sch.*, Mex.
264. *Texanus Sull.*, Gulf Sts., N. C.
265. *albovaginatus Schw.*, Mex.
266. *Hobsoni H. & G.*, Mex.
267. *Floridanus Sull.*, Fla., La.
268. *circinatus Sch.*, Mex.
269. **Raucci Aust.*, Pa.
270. *Mohrii C. M.*, Mex.
271. *Sartorii C. M.*, Mex.
51. DESMATODON *Brid.*
272. *latifolius Hedw.*, Pac. Coast, Col., Br. Am., G'land.
" var. *glacialis*, Col.
273. *sistylus B. & S.*, Col., Pac. Coast.
274. *cemnus (Wahl.)*, Col., Br. Am.
275. *obliquus B. & S.*, Rky. Mts.
276. *Laureri (Schulz.)*, Col.
277. *arenaceus S. & L.*, Ohio.
278. *flavicaus Funk. (Barbula obtusifolia Schw.)*, Col., Br. Am.
279. *Porteri Jus.*, Pa., Niag. Falls, O., Ill.
280. *Californicus Lx.*, Cal.
281. *Sartorii C. M.*, Mex.
282. *plinthobius S. & L.*, Pa., O., So. Sts.
52. BARRULA *Hedw.*
A. Aloidella.
283. *brevirostris B. & S.*, Br. Am.
284. *rigida Schulz.*, Ill., Col., Br. Am.
B. Barbula.
285. *membranifolia Schulz.*, Cal.
286. *chloronotus Schulz.*, Cal.
287. *atrovirens Sm., var. edentula.*, Col., Cal.
288. *Gnepini B. & S.*, Cal.
289. *cuneifolia Dick.*, Cal.
290. *Vahliaua Schulz.*, Cal.
291. *marginata B. & S.*, Cal.
292. *muralis Timm.*, N. J., Pa., So. Sts., Col.
- Y., O.
Coast.
Coast.
Coast.
Coast.
Coast.
Mex.
Mex.
Mex.
Mex.
Mex.
Mex.
Mex.
Mex.
r. Am.
Mex.
Mex.
Mex.
Lakes.
t., La.
N. J.
Fla.
Cal.
Mex.
Fla.

C. Tortula.

293. *ungiculata* Dill., No. and East. U. S., Ala.
 294. *fallax* Hedc., No. and East. U. S., Br. Am., Rky. Mts.
 295. *recurvifolia* Sch., N. Y., N. J., and West to Col.
 296. *vinealis* Br. Eu., O., Br. Am., Pac. Coast, Mex.
 " var. *placida*, Cal.
 297. *gracilis* Schwy., Br. Am.
 298. *convoluta* Hedc., var. *Americana* Aust., Mid. Sts., O., Br. Am., {
 Pac. }
 299. *caespitosa* Schwy., Atl. Sts. and West'd. Gulf Sts., Mex.
 300. *tortuosa* W. & M., Mid. Sts., Br. Am., Rky. Mts.
 301. *fragilis* Wils., N. J. to Canada, Rky. Mts.
 302. *Domellii* Aust., Fla.
 303. *agraria* Swartz, Fla.
 304. *Rauei* Aust., Tex.
 305. *gracilescens* Sch., Mex.
 306. *graciliformis* Sch., Mex.
 307. *leptocarpa* Besch., Mex.
 308. *Bourgeana* Besch., Mex.
 309. *erythropoda* Sch., Mex.
 310. *rufipes* Sch., Mex.
 311. *olivacea* Besch., Mex.
 312. *teretiusscula* Sch., Mex.
 313. *ferruginea* Sch., Mex.
 314. *graminicolor* C. M., Mex.
 315. *Orizabana* C. M., Mex.
 316. *flaccidiseta* Ltz., Mex.
 317. *spiralis* Sch., Mex.
 " var. *humilis* C. M., Mex.
 318. *trichostomoides* Besch., Mex.
 319. *Jooriana* C. M. (*B. Ravenelii* Aust.), Ga., La.
 320. *Indica* Hook. (*B. Cruegeri* Soud., *B. Closteri* Aust.), La., N. J., Fla.
 321. *subfallax* Mull., Pac. Coast.
 322. *semitorta* Sull., Pac. Coast.
 323. *insulana* D. N., Pac. Coast.
 324. *flexifolia* Hpe., Pac. Coast.
 325. *aretocarpa* Lx., Pac. Coast.
 326. *virescens* Lx., Pac. Coast.
 327. *brachyphylla* Sull., Pac. Coast.
 328. *Bolanderi* Lx., Pac. Coast.
 329. *amplexa* Lx., Pac. Coast.
D. Syutrichia.
 330. *subulata* Brid., N. E. Sts., N. Y., Ill., Cal., Br. Am.
 " var. *subinermis*, Col.
 " " *mucronifolia* (*B. mucronifolia* Schwy.), N. Y., O., {
 Br. Am., Col. }

| | | |
|----------|--|---------------------|
| s. Ala. | 331. <i>inermis</i> <i>Mont.</i> , | Col., Pac. Coast. |
| y. Mts. | 332. <i>laevipila</i> <i>Br. Eu.</i> , | Pac. Coast, Br. Am. |
| to Col. | 333. <i>latifolia</i> <i>Br. Eu.</i> , | Pac. Coast. |
| t, Mex. | 334. <i>ruralis</i> <i>Hedw.</i> , | Br. Am., Col., Tex. |
| Cal. | “ var. <i>gigantea</i> , | Pac. Coast. |
| Br. Am. | 335. <i>papillosa</i> <i>Wils.</i> , | N. E. to Fla. |
| Am., } | 336. <i>Mulleri</i> <i>Beuch.</i> , | Pac. Coast, Br. Am. |
| Pac. } | 337. <i>intermedia</i> <i>Brid.</i> , | Pac. Coast, N. J. |
| a, Mex. | 338. <i>glacialis</i> <i>Ktz.</i> , | Mex. |
| ky. Mts. | 339. <i>amphidaea</i> <i>C. M.</i> , | Mex. |
| ky. Mts. | 340. <i>brevipes</i> <i>Lc.</i> , | Pac. Coast. |
| Fla. | 341. <i>Ehrenbergiana</i> <i>C. M.</i> , | Mex. |
| Fla. | 342. <i>obtusissima</i> <i>C. M.</i> , | Mex. |

Tribe VIII. GRIMMIACEÆ.

Family I. GRIMMIEÆ.

| | | |
|------------|--|--|
| Mex. | 53. <i>SCOULERIA</i> <i>Hook.</i> | |
| Mex. | 343. <i>aquatica</i> <i>C. M.</i> , | Pac. Coast. |
| Mex. | 54. <i>GRIMMIA</i> <i>Ehr.</i> | |
| Mex. | <i>A. Schistidium.</i> | |
| Mex. | 344. <i>sphaerica</i> <i>Hedw.</i> , | Br. Am. |
| Mex. | 345. <i>conferta</i> <i>Funk.</i> N. E. and Mid. Sts., | Br. Am., Col., Pac. Coast. |
| Mex. | “ var. <i>obtusifolia</i> , | N. E. |
| Mex. | “ “ <i>longipila</i> , | Mid. Sts. |
| Mex. | 346. <i>apocarpa</i> <i>L.</i> , | N. E. to Miss. Riv. and So. Col., Pac. |
| Mex. | “ var. <i>gracilis</i> , | N. J. |
| Mex. | “ “ <i>rivularis</i> , | Mid. Sts., Pac. Coast. |
| Mex. | 347. <i>maritima</i> <i>Turn.</i> , | Me., R. I., Newfound'd. |
| Ga., La. | 348. <i>Agassizii</i> <i>S. & L.</i> , | L. Superior and N. Bruns'k. |
| J., Fla. | 349. <i>Coloradensis</i> <i>Aust.</i> , | Col. |
| e. Coast. | 350. <i>ambigua</i> <i>Sull.</i> , | N. Mex. |
| e. Coast. | 351. <i>fuliginosa</i> <i>Sch.</i> , | Mex. |
| e. Coast. | 352. <i>Schiedeana</i> <i>C. M.</i> , | Mex. |
| e. Coast. | 353. <i>platyphylla</i> <i>Mitt.</i> , | Col., Davis Straits. |
| e. Coast. | <i>B. Gasterogrimmia.</i> | |
| e. Coast. | 354. <i>Jamesii</i> <i>Aust.</i> , | Rky. Mts. |
| e. Coast. | 355. <i>anodon</i> <i>B. & L.</i> , | Whit. Mts., Br. Am., Col. |
| e. Coast. | 356. <i>braehyodon</i> <i>Aust.</i> , | Cal. |
| e. Coast. | 357. <i>plagiopoda</i> <i>Hedw.</i> , | Rky. Mts. |
| e. Coast. | 358. <i>Brandegei</i> <i>Aust.</i> , | Col. |
| Br. Am. | <i>C. Grimmia.</i> | |
| Col. | 359. <i>pulvinata</i> <i>Dill.</i> , | Pac. Coast. |
| Y., O., } | 360. <i>contorta</i> <i>Wahl.</i> , | Pac. Coast. |
| n., Col. } | 361. <i>torquata</i> <i>Grev.</i> , | Br. Am. |

362. *Muhlenbeckii* Sch., Pac. Coast.
 363. *trichophylla* Greer., Col., Br. Am., Pac. Coast.
 364. *imberbis* Ktze., Mex.
 365. *fuscolutea* Hook., Mex.
 366. *Pennsylvanica* Schreb., Atlantic Sts., Mex.
 367. *Olneyi* Sull., Mid. Sts., Br. Am.
 368. *Californica* Sull., Pac. Coast.
 369. *hamulosa* Lx., Pac. Coast.
D. Gumbellii.
 370. *Donniana* Sm (*G. obtusa* Schleg.), Wht. Mts., Br. Am.
 371. *ovata* H. & M., N. Y., Col., Br. Am., Mex.
 " var. *affinis*, Rky. Mts., Col.
 372. *leucophaea* Greer., N. J., N. Y., O., Ga., Pac. Coast, Br. Am.
 373. *montana* B. & S., Canada, Col.
 374. *alpestris* Schell., Br. Am., Cal.
 375. *elongata* Kauf., Wht. Mts.
 376. *unicolor* Greer., N. Y., Mid. Sts., Br. Am.
 377. *laxa* C. M., Mex.
 378. *calyptata* Hook., New Mex., Col., Br. Am.
Incerta sedis.
 379. **subincurva* Aust., Col.
55. *RACOMITRIUM* Brid.
 380. *Sudeticum* Brid., Mid. Sts., Br. Am.
 381. *heterostichum* Hedw., Pac. Coast, Col., Br. Am.
 382. *fasciculare* Schrad., Alleg. Mts. and North, Br. Am.
 383. *microcarpum* Hedw., Mid. Sts.
 384. *lanuginosum* Hedw., N. E. to Or., Vanc'r I., G'land.
 385. *canescens* Hedw., N. E. to Vanc'r I.
 386. **varium* Mill., Br. Columb.
 387. **Nevii* C. M., Oregon.
 388. *cylindricum* Sch., Mex.
 389. *patens* Dicks., Pac. Coast.
 390. *depressum* Lx., Pac. Coast.

Family II. HEDWIGIEÆ.

56. *HEDWIGIA* Ehr.
 391. *ciliata* Ehr., Atl. Sts., Col., Pac. Coast.
 " var. *leucophaea*, Col., Br. Am.
 " " *falcata*, Oregon.
 392. *subrevoluta* C. M., Mex.
57. *HEDWIGIDIUM* B. & S.
 393. *squarrulosum* B. & S., Mex.

58. BRAUNIA *B. & S.*
 394. *Californica* *Lx. (H. pilifera* *Mitt.)*, Pac. Coast, Br. Am.
 395. *secunda* *B. & S.*, Mex.
 396. *Andreuxii* *Ltz.*, Mex.
 397. *Liebmanniana* *Sch.*, Mex.

Family III. PTYCHOMITRIEÆ.

59. COSCINODON *Spreng.*
 398. *Wrightii* *Sull.*, Tex., Na., N. Mex., Col.
 399. *Rauel* *Aust.*, Col.
60. PTYCHOMITRIUM *B. & S.*
 400. *inervum* *Schwg. (P. pygmaeum* *L. & J.)*, N. Y. to Ga., O., Kan., Mo.
 401. *Drummondii* *H & W.*, So. Ill. to S. C. and the Gulf.
 402. *lepidomitrium* *Sch.*, Mex.
 403. *Reichenbachianum* *Ltz.*, Mex.
 404. *serratum* *Sch.*, Mex.
 405. *Gardneri* *Lx.*, Cal.
61. GLYPHOMITRIUM *Brid.*
 406. *Canadense* *Mitt.*, Br. Am.

Family IV. ZYGODONTEÆ.

62. AMPHORIDIUM *Sch.*
 407. *Lapponicum* *Hedw.*, Mid. Sts., Br. Am., Col., Pac. Coast.
 408. *Mougeotii* *B. & S.*, Mid. Sts., Col.
 409. *caespitosum* *Mitt.*, Vanc'r I.
63. ZYGODON *H. & T.*
 410. *Californicus* *Hpe.*, Pac. Coast.
 411. *Sullivantii* *C. M.*, N. C.
 412. *affinis* *Sch.*, Mex.
 413. *cylindricus* *Sch.*, Mex.
 414. *Liebmanni* *Sch.*, Mex.
 415. *spathulifolius* *Besch.*, Mex.
 416. *angustatus* *Sch.*, Mex.
 417. *Ehrenbergii* *C. M.*, Mex.
 418. *circinatus* *Sch.*, Mex.
 419. *campylophyllus* *C. M.*, Mex.
64. DRUMMONDIA *Hook.*
 420. *elavellata* *Hook.*, Can. to Ga.

65. *MACROMITRIUM* *Brid.*
 421. *Lieboldii* *Hpr.*, Mex.
 422. *Mexicanum* *Mitt.*, Mex.
 423. *Gliesbrechtii* *Besch.*, Mex.
 " var. *brevifolium*, Mex.
 424. *rhabdocarpum* *Mitt.*, Fla., Mex.
 425. *Sumichrasti* *Duby.*, Mex.
 426. *flexuosum* *Sch.*, Mex.
 427. *pentastichum* *C. M.*, Mex.
 428. *tomentosum* *C. M.*, Mex.
 429. *tortuosum* *Sch.*, Mex.
 430. *Mulleri* *Sch.*, Mex.
 431. *leptophyllum* *Besch.*, Mex.
 432. *Dregei* *Hoch.*,? Neb., Ga.
 433. *perpusillum* *C. M.*, Mex.
 434. *Sartori* *C. M.*, Mex.
 " var. *gracilescens*, Mex.
 " " *robustum* *C. M.*, Mex.
66. *MICROMITRIUM* *Sch.*
 435. *Schlumbergeri* *Sch.*, Mex.
67. *SCHLOTHEIMIA* *Brid.*
 436. *Sullivanti* *C. M.*, Gulf Sts.
 437. *Sartorii* *Sch.*, Mex.
 438. *sphaeropoma* *Duby.*, Mex.
 439. *Mohriana* *C. M.*, Mex.

Family V. ORTHOTRICHEE.

68. *ULOTA* *Brid.*
 440. *Drummondii* *Grer.*, Br. Am.
 441. *Ludwigii* *Brid.*, N. Y., Alleg'y Mts., Br. Am.
 442. *curvifolia* *Wahl.*, Br. Am.
 443. *crispa* *Hedw.*, No. and East. U. S., Br. Am.
 444. **crispula* *Horusch.*, No. and East. U. S., Br. Am.
 445. *phyllantha* *Brid.*, Pac. Coast.
 446. *Hutchinsiae* *Smith.*, Atl. Sts., Col., G'land.
 447. *Barclayi* *Mitt.*, Alaska.
69. *ORTHOTRICHEUM* *Hedw.*
A. Peristome usually simple.
 448. *anomalum* *Hedw.*, No. and East. U. S., Br. Am., Col., G'land.

- Mex. 440. *cupulatum Hoffm.*,
 " var. *Peckii*, } (*O. Porteri* (S. & L.), *Aust.*) Pa., N. Y.,
 " " *Porteri*, } N. J., Ga.
 Mex. " " *parvulum*, N. E. Sts.,? N. Mex., Col.
 Mex. " " *minus*, (*O. Lescurii Aust.*) Mid. and N. E. Sts., }
 Mex. } Col., Lake Ont. }
 Mex. 450. *Sturmii H. & H.*, Tex., N. Mex., Col., Cal.
 Mex. 451. *Texanum Sull.*, Tex., N. Mex., Col., Pac. Coast.
 Mex. " var. *globosum*, Pac. Coast.
 Mex. 452. *Jamesianum Sull.*, Can., Na.
B. Peristome double, ciliae either 8 or 16.
 Mex. 453. *rupestre Sch.*, Col., Pac. Coast.
 Mex. 454. *obtusifolium Schrad.*, Mid. Sts.
 Mex. 455. *affine Schrad.*, Lake Superior region.
 Mex. 456. *speciosum Nees.*, Br. Am., Col., Pac. Coast.
 " var. *polyanthum Lx.*, Cal.
 " " *brevicaule Lx.*, Pac. Coast.
 Mex. 457. *Rancei Aust.*, Col.
 Mex. 458. *alpestre Hoensch.*, var. Can., Rky. Mts.
 Mex. 459. *fallax Swartz.*, N. J.
 " var. *truncatulum Aust.*, Ill.
 Mex. 460. *tenellum Bench.*, Col.
 Mex. 461. *exiguum Sull.*, S. C.
 Mex. 462. *brachytrichum Sch.*, Pa., N. Y., Lake Sup., Br. Columb.
 Mex. 463. *strangulatum Beauv.*, N. E. Sts. to Va. and O. (?)
 Mex. 464. **sordidum S. & L.*, Mid. and N. E. Sts., Br. Am.
 Mex. 465. *Ohioense S. & L.*, O., Mid. and N. E. Sts., Br. Am.
 Mex. 466. *psilocarpum Jas. (O. pasillum Mill.?)*, Mid. Sts., Conn., S. C.
 Mex. 467. *Hallii S. & L.*, Col.
 Mex. 468. *Kingianum Lx.*, Col., Na.
 Mex. 469. *Macouni Aust.*, Br. Columb.
 Mex. 470. *Bolanderi Sull.*, Cal.
 Mex. 471. *cylindricarpum Lx. (O. Coulteri Mill.?)*, Cal., Col.
 Mex. 472. *consimile Mitt.*, Br. Am., Col., Pac. Coast.
 Mex. 473. *Columbicum Mitt.*, Pac. Coast.
 Mex. 474. *elegans Sch.*, Br. Columb.
 Mex. 475. *Watsoni Jus.*, Na., Col.
C. Peristomal teeth 8 soon broken up into 16, ciliae 16.
 Mex. 476. *pallens Brach.*, Br. Columb.
 Mex. 477. *rivulare Turn.*, Pac. Coast.
 Mex. 478. *diaphanum Schrad. (O. canum Mill.)*, Br. Am., Col.
 Mex. 479. *pulehellum Sm.*, Br. Am., Pac. Coast.
 Mex. 480. *Hainesiae Aust.*, Col.
 Mex. 481. *pycnophyllum Sch.*, Mex.
 Mex. 482. *recurvans Sch.*, Mex.

D. Peristomal teeth 16 composed of a double series of cells, eroded at the sides and papillose.

483. *Lyellii* H. & T., Br. Am., Pac. Coast.
 484. *leiocarpum* B. & S. (*O. speciosum* Nees. var. *polyanthum* Lx.)
fide Aust.), N. E. Sts., Br. Am. }

Family VI. ENCALYPTEÆ.

70. ENCALYPTA *Schrad.*
 485. *commutata* N. & H., Br. Am., Rky. Mts.
 486. *vulgaris* Hedw., Br. Am., Rky. Mts., Pac. Coast.
 " var. *obtusata*, Col.
 487. *rhabdocarpa* Schwg., Br. Am., Rky. Mts., N. Mex.
 488. *ciliata* Hedw., N. H., N. Y., O., Br. Am., Rky. Mts., Pac. Coast.
 489. *apophysata* N. & H., Rky. Mts.
 490. *procera* Bruch., Br. Am.
 491. *streptocarpa* Hedw., Mid. Sts., Br. Am., Cal.
 492. *Mexicana* C. M., Mex.
 493. **longipes* Mitt., Rky. Mts.
 494. *Macounii* Aust., Can.
 495. *Selwynii* Aust., Vanc'r I.

Tribe IX. TETRAPHIDACEÆ.

Family I. TETRAPHIDEÆ.

71. TETRAPHIS *Hedw.*
 496. *pellucida* Hedw., U. S., Br. Am.
 72. TETRODONTIUM *Schwg.*
 497. *repandum* Fink., Whit. Mts., N. H.

Tribe X. SCHISTOSTEGACEÆ.

Family I. SCHISTOSTEGEÆ.

73. SCHISTOSTEGA *Mohr.*
 498. *osmundaceæ* W. & M., N. Y., Whit. Mts., Br. Am.

Tribe XI. SPLACHNACEÆ.

Family I. TAYLORIEÆ.

74. DISSODON *G. & A.*
 499. *Frœlichianus* Frœl., Rky. Mts.
 500. *Hornschuchii* Grœn., Rky. Mts.
 501. *splachnoides* Thun., Col., Br. Am.

75. *TAYLORIA* *Hook.*
 502. *splachnoides* *Hook.*, Col., Br. Am.
 503. *serrata* *B. & S.*, Pac. Coast, Col., Br. Am.
 504. *tenuis* *Dicks.*, G'land.

Family II. SPLACHNEÆ.

76. *TETRAPLODON* *B. & S.*
 505. *angustatus* *B. & S.*, Wht. Mts., Br. Am., Arc. regions.
 506. *australis* *S. & L.*, Atl. Sts.
 507. *mnioides* *B. & S.*, N. Y., Br. Am., G'land.
 " *var. Adamsianus*, Arc. regions.
 " *" cavifolius*, Arc. regions.
 508. *neocolatus* *B. & S.*, Rky. Mts.
77. *SPLACHNUM* *L.*
 509. *Wormskjoldii* *Hornsch.*, Arc. Am., G'land.
 510. *sphæricum* *L.*, Br. Am.
 511. *vasculosum* *L.*, Arc. regions.
 512. *ampullaceum* *L.*, N. E. to Pa. and O.
 513. *rubrum* *L. (S. Fowleri Aust.)*, Me., Br. Am.
 514. *melanocaulon* *Schr.*, Pac. Coast.

Tribe XII. DISCELIACEÆ.

Family I. DISCELIÆ.

78. *DISCELIUM* *Brid.*
 515. *nudum* *Dicks.*, Pa., O., Can. to Vancouver I.

Tribe XIII. FUNARIACEÆ.

Family I. PHYSCOMITRIÆ.

79. *APHANORRHAGMA* *Sull.*
 516. *serratum* *Sull.*, Mid. and West. Sts.
80. *PYRAMIDULA* *Brid.*
 517. *tetragona* *Brid.*, N. Am.
81. *PHYSCOMITRIUM* *Brid.*
 318. *pyriforme* *L.*, Ill., Atl. Sts., Fla., La., Br. Am., Col., Pac. Coast.
 319. *hians* *Lindb. (P. latifolium Hook.)*, O., Col.
 520. *immersum* *Sull.*, Ill., Mid. Sts., O., S. C.
 521. *subsphæricum* *Sch.*, Mex.
 522. *tetragonum* *B. & S.*, Ind., Tex., Col.

82. *EUTOSTHODON Schreb.*
 523. *Drummondi Sull.*, Gulf Sts.
 524. *Bolanderi Lr.*, Pac. Coast.
 525. *Templetoni Schwyg.*, Pac. Coast.
 526. *longisetus Sch.*, Pac. Coast.
83. *FUNARIA Schreb.*
 527. *Americana Lindby. (F. Muhlenbergii Hebr.)*, Pa.
 528. *Mediterranea Lindby. (F. Muhlenbergii Schwyg. and F. calcarea Sch.)*, Cal. }
 529. *calcarea Wohl. (F. Hibernica H. & T.)*, Br. Am.
 530. *serrata Beauv.*, Pa. to So. Sts.
 531. *Californica S. & L.*, Cal.
 532. *flavicans Michx.*, West. and So. U. S., and the coast North'd.
 533. *hygrometrica Hebr.*, U. S., Br. Am.
 " var. *patula*, Pa., N. J., Col., Pac. Coast.
 " " *calvescens*, Pa., O., So. Sts. to Mex.
 534. *annulata Besch.*, Mex.
 535. *obtusata Sch.*, Mex.
 536. *convoluta Hpe.*, Cal.
 537. *microstoma B. & S.*, Cal.
 538. *Ravenellii Aust.*, S. C.
 539. *Sartorii C. M.*, Mex.
 540. *Orizabensis C. M.*, Mex.

Tribe XIV. BRYACEÆ.

Family I. PLEUROBRYEÆ.

84. *MELICHOFEIRA N. & H.*
 541. **compacta Aust. (Bryum ?)*, Whit. Mts., N. J., Br. Am.
 542. *macrocarpa B. & S.*, Mex.
 543. *Schiediana C. M.*, Mex.
 544. *campylothea C. M.*, Mex.

Family II. BRYEÆ.

85. *LEPTOBRYUM Sch.*
 545. *pyriforme L.*, Br. Am., U. S., Mex.
86. *WEBERA H.*
 546. *acuminata H. & H.*, N. Y., Adirond'k Mts.
 547. *polymorpha H. & H.*, Pac. Coast.
 548. *elongata Dicks.*, Whit. Mts., N. Y., So. Sts., Col.
 " var. *humilis B. & S.*, Br. Am., Col.
 549. *longicolla Swartz.*, Br. Am. Pac. Coast.

550. *Leseuriana Sull.*, N. E., Mid. Sts., Va., Br. Am.
 551. *nutaus Schreb.*, No. and East. U. S., Pac. Coast.
 " var. *cæspitosa*, Col.
 " " *bicolor*, Pa.
 " " *longiseta*, Col.
 552. *eucullata Schweg.*, Whit. Mts., Pac. Coast.
 553. *cruda Schreb.*, No. and East. U. S., Br. Am., Col., Mex.
 554. *Schimperi C. M.*, G'land.
 555. *annotina Hedw.*, N. E., Mid. Sts., Br. Am.
 556. *Bolanderi Lx.*, Cal.
 557. *Ludwigii Schweg.*, Br. Am., Rky. Mts., Pac. Coast.
 558. *Tozeri Gree.*, Pac. Coast.
 559. *albicans Wahl.*, No. and East. U. S., Br. Am., Pac. Coast.
 " *gracilior*, Pac. Coast.
 560. *integridens Sch.*, Mex.
 561. *spectabilis Hpe.*, Mex.
 562. *cylindrica Sch.*, Mex.
 563. *Mulleriana Sch.*, Mex.
 564. *falcata Besch.*, Mex.
 565. *nudicaulis Lx.*, Pac. Coast.
 566. *subdenticulata B. & S.*, Col.
87. BRYUM *Dill.*
567. *arcticum R. Br.*, Pac. Coast. Rky. Mts., Br. Am., G'land.
 568. *purpurascens R. Br.*, Rky. Mts., Br. Am.
 569. *Brownii R. Br.*, Rky. Mts., Br. Am.
 570. *Lindgreni Sch. (B. arcticum B. & S.)*, Pac. Coast. Rky. Mts.
 571. *pendulum Horusch. (B. cernuum B. & S.)*, No. and East. U. S., {
 Br. Am., Rky. Mts., Pac. Coast. }
 572. *inelinatum Scartz.*, Br. Am., Pac. Coast.
 573. *Warneum Bland.*, Pac. Coast.
 574. *uliginosum Bruch.*, Mid. and West. Sts., Br. Am., Rky. Mts.
 575. *flexuosum Aust.*, Br. Columb.
 576. *intermedium W. & M.*, U. S., Br. Am.
 577. *cirrhatum H. & H.*, Col., Pac. Coast.
 578. *bimum Schreb.*, No. and East. Sts., Rky. Mts., Pac. Coast.
 579. *torquescens B. & S.*, Br. Am., Tex., N. Mex., Ala., Pac. Coast.
 580. *provinciale Phil.*, Fla.
 581. *palleseens Schleich.*, O., Br. Am., Col., Pac. Coast.
 582. *subrotundum Brid.*, Br. Am., Pac. Coast.
 583. *atropurpureum W. & M.*, O., Tenn., Ala., Fla.
 584. *murale Wils.*, Mex.
 585. *alpinum Link.*, Whit. Mts.
 586. *Muhlenbeckii B. & S.*, Pa., Col.
 587. *cæspiticium L.*, No. and East. U. S., Col., Ala., Br. Am., Pac. Cst.

| | | |
|------|----------------------------------|--|
| 588. | <i>Blindii</i> B. & S., | Br. Am. |
| 589. | <i>argenteum</i> L., | U. S., Br. Am. |
| | “ var. <i>corrugatum</i> Hpe., | Mex. |
| 590. | <i>capillare</i> L., | U. S., Mex. |
| | “ var. <i>longicolla</i> , | Mex. |
| 591. | <i>obconicum</i> Hornsch., | Col., Pac. Coast. |
| 592. | <i>Canariense</i> Brid., | Pac. Coast. |
| 593. | <i>cyclophyllum</i> Schwg., | Mid. Sts. |
| 594. | <i>pallens</i> Swartz, | Mid. Sts., Br. Am. |
| 595. | <i>Duvallii</i> Voit, | N. E., Pac. Coast. |
| 596. | <i>pseudo-triquetrum</i> Schwg., | No. and East. U. S., Br. Am., } Col., Pac. Coast. } |
| 597. | <i>turbinatum</i> Hedw., | Col., Can., and West'd to Pac. Coast. |
| | “ var. <i>latifolium</i> , | Pac. Coast. |
| 598. | <i>systilium</i> C. M., | Mex. |
| 599. | <i>imbricatum</i> Sch., | Mex. |
| 600. | <i>minutulum</i> Hpe., | Mex. |
| 601. | <i>Mexicanum</i> Mont., | Mex. |
| 602. | <i>tenellum</i> Sch., | Mex. |
| 603. | <i>rosulatum</i> C. M., | Mex. |
| 604. | <i>patulum</i> Sch., | Mex. |
| 605. | <i>angustatum</i> Sch., | Mex. |
| 606. | * <i>Clintoni</i> Aust., | N. Y. |
| 607. | <i>Biddlecomiæ</i> Aust., | Col. |
| 608. | * <i>Macouni</i> Aust., | Br. Am., Pac. Coast. |
| 609. | * <i>Rauei</i> Aust., | Wht. and Catskill Mts. |
| 610. | <i>sanguineum</i> Ludw., | Ala. |
| 611. | <i>occidentale</i> Sull., | Pac. Coast. |
| 612. | <i>Californicum</i> Sull., | Pac. Coast. |
| 613. | <i>Bigelowii</i> Sull., | Pac. Coast. |
| 614. | <i>Atwateriæ</i> C. M., | Col. |
| 615. | <i>Mohrii</i> Lx., | La. |
| 616. | <i>minutulum</i> Sch., | Mex. |
| 617. | <i>plagiopodium</i> Sch., | Mex. |
| 618. | <i>brevicaule</i> Sch., | Mex. |
| 619. | <i>Pohliæforme</i> Sch., | Mex. |
| 620. | <i>coronatum</i> Schwg., | Fla., Mex. |
| 621. | <i>andicola</i> Hook., | Mex. |
| 622. | <i>Bolteri</i> C. M., | Mex. |
| 623. | <i>Mexicanum</i> Mont., | Mex. |
| 624. | <i>didymodontium</i> Mitt., | Mex. |
| 625. | <i>miniatum</i> Lx., | Col. |
| 626. | <i>Oreganum</i> Sull., | Cal. |
| 627. | <i>roseum</i> Schreb., | U. S., Br. Am. |
| 628. | <i>domingense</i> Steud., | Mex. |

629. procerum *Sch.*, Mex.
 630. Ehrenbergianum *C. M.*, Mex.
 631. comatum *Besch.*, Mex.
 632. subroseum *Besch.*, Mex.
 633. Liebmanni *Sch.*, Mex.
 634. Sartorii *Sch.*, Mex.
 635. concinatum *Spruce*, N. Y.
 636. prostratum *C. M.*, Mex.
88. ZIERIA *Sch.*
 637. julacea *Dicks.*, Col.
 638. demissa *Hornsch.*, Col.
89. RHIZOGONIUM *Br.*
 639. spiniforme *Br.*, Gulf Sts., Mex.
 640. Menziesii (*Hook.*) (*Matum Menziesii Hook.*), Cal., Or., Br. Col.
90. MNIMUM *L.*
A. Leaves bordered simply serrate.
 641. cuspidatum *Hedw.*, No. and East. U. S., Br. Am., Col.
 642. affine *Bland.*, No. and East. U. S., Br. Am., Pac. Coast.
 " var. elatum, Pa., Col.
 " " rugicum, Ohio.
 643. medium *B. & S.*, Mid. Sts., Br. Am., Pac. Coast.
 644. Drummondii *B. & S.*, Mts. of N. E., N. Y., Pa., Br. Am.
 645. rostratum *Schrad.*, No. and East. U. S., Br. Am., Mex., Col.
 646. *insigne *Mitt. (M. affine Bland, var.?)*, Pac. Coast.
 647. venustum *Mitt.*, Pac. Coast.
 648. *Nevii *C. M.*, Oregon.
- B. Leaves bordered doubly dentate.*
 649. hornum *L.*, No. and East. U. S., Br. Am.
 650. serratum *Schrad.*, No. and East. U. S., Br. Am., Col.
 651. orthorrhynchum *B. & S.*, No. and East. U. S., Br. Am.
 652. lycopodioides *Hook.*, No. and East. U. S., Br. Am.
 653. spinosum *Voit.*, Col.
 654. spinulosum *B. & S.*, U. S., Br. Am.
 655. *umbratile *Mitt.*, Br. Columb.
- C. Leaves not bordered.*
 656. stellare *Hedw.*, No. and East. U. S., Br. Am.
 657. cinclidioides *Blytt.*, No. and East. U. S., Br. Am.
- D. Leaves bordered entire.*
 658. punctatum *Hedw.*, No. and East. U. S., Br. Am.
 659. subglosum *B. & S.*, Br. Am., Col., Pac. Coast.
91. CINCLIDIUM *Swartz., Schrad.*
 660. stygium *Swartz.*, Labrador, G'land.

661. *subrotundum* *Brid.*, Labrador, G'land.

Family III. AMBLYODONTEÆ.

92. **AMBLYODON** *P. Beauv.*
662. *dealbatus* *Dicks.*, N. Y., Wis., Col.

Family IV. MEESEÆ.

93. **CATOSCOPIUM** *Brid.*
663. *nigratum* *Brid.*, Rky. Mts., Br. Am.
94. **MEESEA** *Hedw. (Meesia.)*
664. *trichodes* (*L.*) *Spruce (M. uliginosa Hedw.)*, Wht. Mts., N. Y., {
O., Br. Am., Col., Pac. Coast. }
" var. *alpina*, Alpine and Northern regions.
665. *longiseta* *Hedw.*, N. E. and Mid. Sts., Pac. Coast.
666. *triquetra* (*L.*) *Lindby. (M. tristicha Fuuk.)*, Mid. Sts., Br. Am., {
Pac. Coast. }
667. *Macomi* *Aust.*, Br. Columb.
95. **PALUDELLA** *Ehr.*
668. *squarrosa* *L.*, N. Y., Br. Am., Arc. regions.

Family V. AULACOMNIEÆ.

96. **AULACOMNION** *Schw.*
669. *androgynum* *L.*, Col., Br. Am., Pac. Coast.
670. *palustre* *L. (A. papillosum C. M.)*, U. S., Br. Am.
" var. *rupestris*, Atl. Sts.
671. *turgidum* *Wahl.*, Adirond'k and Wht. Mts., G'land.
672. *heterostichum* *Br. Eu.*, No. and East. U. S., Br. Am.

Family VI. BARTRAMIEÆ.

97. **BARTRAMIA** *Hedw.*
673. *subulata* *B. & S.*, Col.
674. *stricta* *Brid.*, Pac. Coast.
675. *Menziesii* (*Hook.*), Pac. Coast.
676. *Campylopus* *Schw.*, Mex.
677. *subithyphylla* *Besch.*, Mex.
678. *ithyphalloides* *Schw.*, Mex.
679. *Schmidii* *C. M.*, Mex.
680. *glauca* *Sw.*, Mex.
681. *ithyphylla* *Brid.*, Alleg'y and Rky. Mts., Br. Am.

682. *pomiformis* L., No. and East. U. S., Br. Am.
 683. *Halleriana* Hedw., No. Am.
 684. *Oederi* Gun., No. and East. U. S., Br. Am.
98. GLYPHOCARPA *R. Br.*
 685. *intertexta* Sch., Mex.
99. CONOSTOMUM *Sw.*
 686. *boreale* Dicks., Adirond'k and Alleg'y Mts.
100. BARTRAMIDULA *B. & S.*
 687. *Wilsoni* B. & S., N. J.
101. PHILONOTIS *Brid.*
 688. *Marchica* *Brid.* (*B. Muhlenbergii* Schweg.), No. and East. U. S., {
 Br. Am., Rky. Mts., Pac. Coast. }
 689. *fontana* L., No. and East. U. S., Br. Am., Rky. Mts., Pac. Coast.
 " var. *falcata*, Col., N. J., Wht. Mts.
 690. *radicalis* *Beaur.*, Pa., O., So. Sts.
 " var. *Porteri* *Aust.*, Pa., O., N. Y.
 691. *tenella* Hedw., Fla.
 692. *granimicola* C. M., Mex.
 693. *Mohriana* C. M., Mex.
 694. *Orizabana* Sch., Mex.
 695. *brachyclada* *Besch.*, Mex.
 696. *erythrocaulis* C. M., Mex.
 697. *amblyoblaster* C. M., Mex.
 698. *Sartorii* C. M., Mex.
102. BREITTELIA *Sch.*
 699. *arcuata* Dicks., Mex.
 700. *subarcuata* Sch., Mex.
 701. *intermedia* *Hpe.*, Mex.

Family VII. TIMMIEÆ.

103. TIMMIA *H.*
 702. *megapolitana* Hedw. (*T. bavaria* Hes.), No. and East. U. S., {
 Br. Am., Rky. Mts., Pac. Coast. }
 703. *Austriaca* Hedw., Br. Am., Br. Columb., Col.

Tribe XV. POLYTRICHACEÆ.

Family I. POLYTRICHEÆ.

104. ATRICHUM *P. Beauv.*
 704. *undulatum* L., U. S., Br. Am.

- | | | |
|------|--|--|
| 705. | <i>angustatum</i> <i>Brid.</i> , | No. Am. |
| 706. | <i>crispum</i> <i>Jas.</i> , | Mid. Sts., Br. Am. |
| 707. | <i>parallellum</i> <i>Mitt.</i> , | Rky. Mts., Br. Am. |
| 708. | <i>Selwyni</i> <i>Aust.</i> , | No. West. Coast, Br. Am. |
| 709. | <i>Leseurii</i> <i>Jas.</i> , | Alaska. |
| 710. | <i>polycarpum</i> <i>Sch.</i> , | Mex. |
| 711. | <i>subulirostrum</i> <i>Sch.</i> , | Mex. |
| 712. | <i>Mulleri</i> <i>Sch.</i> , | Mex. |
| 713. | <i>torquescens</i> <i>Sch.</i> , | Mex. |
| 105. | OLIGOTRICHUM <i>D. C.</i> | |
| 714. | <i>Aligerum</i> <i>Mitt.</i> , | Rky. Mts. |
| 715. | <i>Lyellii</i> <i>Mitt.</i> , | Pac. Coast, Rky. Mts. |
| 106. | PSILOPILUM <i>Brid.</i> | |
| 716. | <i>arcticum</i> <i>Wahl.</i> , | Arct. America. |
| 107. | POGONATUM <i>P. Beauv.</i> | |
| 717. | <i>tenue</i> <i>Menz.</i> (<i>P. brevicaulis</i> <i>Brid.</i>), | East. and West. Sts., La. |
| 718. | <i>brachyphyllum</i> (<i>Mr.</i>) <i>Beauv.</i> , | N. J. to So. Sts. |
| 719. | <i>capillare</i> <i>Mr.</i> , | Br. Am., Rky. Mts. |
| | " <i>var. dentatum</i> , | Alaska. |
| 720. | <i>contortum</i> <i>Menz.</i> , | Pac. Coast. |
| 721. | <i>urnigerum</i> <i>Brid.</i> , <i>Whit.</i> , Adirond'k, Catskill, Alleg'y Mts., Col. | |
| 722. | <i>atrovirens</i> <i>Mitt.</i> , | Alaska, Br. Am. and South'd. |
| 723. | <i>alpinum</i> <i>Brid.</i> , | N. E. and Mid. Sts. to Col., Pac. Coast. |
| | " <i>var. septentrionale</i> , | Col. |
| 724. | <i>cuspidatum</i> <i>Besch.</i> , | Mex. |
| 725. | <i>Schmitzii</i> <i>Besch.</i> , | Mex. |
| 726. | <i>Bescherellii</i> <i>Hpe.</i> , | Mex. |
| 727. | <i>Tolnecense</i> <i>Hpe.</i> , | Mex. |
| 728. | <i>comosum</i> <i>Sch.</i> , | Mex. |
| 729. | <i>campylocarpum</i> <i>C. M.</i> , | Mex. |
| 730. | <i>subgracile</i> <i>Hpe.</i> , | Mex. |
| 731. | <i>albovaginatum</i> <i>Hpe.</i> , | Mex. |
| 732. | <i>Liebmanni</i> <i>Sch.</i> , | Mex. |
| 733. | <i>leptocarpum</i> <i>Besch.</i> , | Mex. |
| 734. | <i>glaciale</i> <i>Mitt.</i> , | Mex. |
| 735. | <i>Schlumbergeri</i> <i>Sch.</i> , | Mex. |
| 736. | <i>robustum</i> <i>Sch.</i> , | Mex. |
| 737. | <i>ericifolium</i> <i>Besch.</i> , | Mex. |
| 738. | <i>cylindricum</i> <i>Sch.</i> , | Mex. |
| 739. | <i>macropogon</i> <i>Sch.</i> , | Mex. |
| 108. | POLYTRICHUM <i>L.</i> | |
| 740. | <i>gracile</i> <i>Menz.</i> , | O., Br. Am., Col. |

- Am. 741. *formosum Hedw.*, East. U. S., Br. Am.
 Am. 742. *piliferum Schreb.*, N. Y., N. J., O., Br. Am., Col., Pac. Coast.
 Am. " var. *hevipilum*, Col., Pac. Coast.
 Am. 743. *juniperinum Hedw.*, U. S., Br. Am.
 ska. " var. *alpinum*, Rky. Mts.
 Mex. " " *strictum*, N. Y., N. J.
 Tex. 744. *commune L.*, U. S., Br. Am.
 Tex. 745. *juniperiforme Sch.*, Mex.
 Tex. 746. *Ghiesbrechtii Besch.*, Mex.
 747. *subflexuosum Ltz.*, Mex.
 Mts. 748. *Sartorii C. M.*, Mex.
 Mts. 749. *aristatum Sch.*, Mex.

(To follow sp. 749, page 31.)

Tribe XVI. BUXBAUMIACEÆ.

Family I. DIPHYSCIÆ.

- La. 108a. *DIPHYSCIUM Mohr.*
 Sts. 749a. *foliosum Buxb.*, East, Mid. and West. Sts., Br. Am.
 Mts.
 ska. 108b. *BUXBAUMIA Hall.*
 ast. 749b. *aphylla Hall.*, East, Mid. and West. Sts., Br. Am., Pac. Coast.
 Col. 750. *Novæ-Angliæ Sull.*, N. E. and Mid. Sts. and West'd, Br. Am.
 M'd. 751. *biformis Sull.*, Ohio.
 ast. 752. *Leseurii Sull.*, Can., N. E., Fla.
 Col. " var. *cymbifolia*, N. J., Va.
 Tex. " " *ramosior*, N. H., Vt.
 Tex. 753. *Sullivanti Lindb.* (*F. Leseurii Sull.*, var. *graciliscens Sull.*)
 Tex. *Icon.*, N. J.)
 Tex. 754. *filiformis S. & L.* (*F. disticha H. & W.*, var. *tenuior S.* *Icon.*,)
 Tex. *Kentucky.*)
 Tex. 755. *Dalecarlica Br. Eu.*, N. E. and Mid. Sts. and West'd, Br. Am.
 Tex. 756. *Neo-Mexicana S. & L.*, N. Mex., Rky. Mts., Col., Pac. Coast.
 Tex. 757. *antipyretica L.*, Br. Am., Pac. Coast.
 Tex. " var. *gigantea*, N. E. and Mid. Sts. and West'd.
 Tex. 758. *disticha H. & W.*, N. E. and Mid. Sts., Ky., Ala., La.
 Tex. 759. *hypnoides Hartm.*, Br. Am., Col.
 Tex.
 Tex. 110. *DICHELYMA Myria.*
 Tex. 760. *capillaceum Dill.*, N. Y., Can., N. Scotia, Pa., Col.
 Tex. 761. *falcatum Myria.*, Catskill Mts., N. E., Br. Am.
 Tex. 762. *pallescens Br. Eu.*, N. Y., N. E., N. Bruns'k, Br. Am.
 Tex. 763. **subulatum Myria.*, La.
 Tex. 764. *uncinatum Mitt.*, Pac. Coast.
 Col. 765. **cylindrocarpum Aust.*, Oregon.

- | | | |
|------|-------------------------------------|--|
| 705. | <i>angustatum</i> <i>Brid.</i> , | No. Am. |
| 706. | <i>crispum</i> <i>Jas.</i> , | Mid. Sts., Br. Am. |
| 707. | <i>parallelum</i> <i>Mitt.</i> , | Rky. Mts., Br. Am. |
| 708. | <i>Selwyni</i> <i>Aust.</i> , | No. West. Coast, Br. Am. |
| 709. | <i>Lescurei</i> <i>Jas.</i> , | Alaska. |
| 710. | <i>polycarpum</i> <i>Sch.</i> , | Mex. |
| 711. | <i>subulirostrum</i> <i>Sch.</i> , | Mex. |
| 712. | <i>Mulleri</i> <i>Sch.</i> , | Mex. |
| 713. | <i>torquescens</i> <i>Sch.</i> , | Mex. |
| 105. | OLIGOTRICHUM <i>D. C.</i> | |
| 714. | <i>Aligerum</i> <i>Mitt.</i> , | Rky. Mts. |
| 715. | <i>Lepidi</i> <i>Mitt.</i> | |
| | | |
| | | |
| | | |
| | | |
| 722. | <i>atrovirens</i> <i>Mitt.</i> | Alaska, Br. Am. and South'd. |
| 723. | <i>alpinum</i> <i>Brid.</i> , | N. E. and Mid. Sts. to Col., Pac. Coast. |
| | " <i>var. septentrionale.</i> | Col. |
| 724. | <i>enspidatum</i> <i>Besch.</i> , | Mex. |
| 725. | <i>Schmitzii</i> <i>Besch.</i> , | Mex. |
| 726. | <i>Bescherellii</i> <i>Hpe.</i> , | Mex. |
| 727. | <i>Tolucense</i> <i>Hpe.</i> , | Mex. |
| 728. | <i>comosum</i> <i>Sch.</i> , | Mex. |
| 729. | <i>campylocarpum</i> <i>C. M.</i> , | Mex. |
| 730. | <i>subgracile</i> <i>Hpe.</i> , | Mex. |
| 731. | <i>albovaginatum</i> <i>Hpe.</i> , | Mex. |
| 732. | <i>Liebmanni</i> <i>Sch.</i> , | Mex. |
| 733. | <i>leptocarpum</i> <i>Besch.</i> , | Mex. |
| 734. | <i>glaciale</i> <i>Mitt.</i> , | Mex. |
| 735. | <i>Schlumbergeri</i> <i>Sch.</i> , | Mex. |
| 736. | <i>robustum</i> <i>Sch.</i> , | Mex. |
| 737. | <i>ericifolium</i> <i>Besch.</i> , | Mex. |
| 738. | <i>cylindricum</i> <i>Sch.</i> , | Mex. |
| 739. | <i>macropogon</i> <i>Sch.</i> , | Mex. |
| 108. | POLYTRICHUM <i>L.</i> | |
| 740. | <i>gracile</i> <i>Meuz.</i> , | O., Br. Am., Col. |

741. *formosum* *Hedw.*, East. U. S., Br. Am.
 742. *piliferum* *Schreb.*, N. Y., N. J., O., Br. Am., Col., Pac. Coast.
 " var. *hevipilum*, Col., Pac. Coast.
 743. *juniperinum* *Hedw.*, U. S., Br. Am.
 " var. *alpinum*, Rky. Mts.
 " " *strictum*, N. Y., N. J.
 744. *commune* *L.*, U. S., Br. Am.
 745. *juniperiforme* *Sch.*, Mex.
 746. *Ghiesbreehtii* *Besch.*, Mex.
 747. *subflexuosum* *Ltz.*, Mex.
 748. *Sartorii* *C. M.*, Mex.
 749. *aristatum* *Sch.*, Mex.

Series II. PLEUROCARPÆ.

Tribe I. FONTINALACEÆ.

Family I. FONTINALEÆ.

100. FONTINALIS *Dill.*
 750. *Novæ-Angliæ* *Sull.*, N. E. and Mid. Sts. and West'd, Br. Am.
 751. *biformis* *Sull.*, Ohio.
 752. *Lescurii* *Sull.*, Can., N. E.; Fla.
 " var. *cymbifolia*, N. J., Va.
 " " *ramosior*, N. H., Vt.
 753. *Sullivanti* *Lindby.* (*F. Lescurii* *Sull.*, var. *gracilescens* *Sull.*,
 Icon.), N. J. {
 754. *filiformis* *S. & L.*, (*F. disticha* *H. & W.*, var. *tenrior* *S.*, *Icon.*), {
 Kentucky. }
 755. *Dalecarlica* *Br. Eu.*, N. E. and Mid. Sts. and West'd, Br. Am.
 756. *Neo-Mexicana* *S. & L.*, N. Mex., Rky. Mts., Col., Pac. Coast.
 757. *antipyretica* *L.*, Br. Am., Pac. Coast.
 " var. *gigantea*, N. E. and Mid. Sts. and West'd.
 758. *disticha* *H. & W.*, N. E. and Mid. Sts., Ky., Ala., La.
 759. *hypnoides* *Hartw.*, Br. Am., Col.
110. DICHELYMA *Myrin.*
 760. *capillaceum* *Dill.*, N. Y., Can., N. Scotia, Pa., Col.
 761. *falcatum* *Myrin.*, Catskill Mts., N. E., Br. Am.
 762. *pallescens* *Br. Eu.*, N. Y., N. E., N. Bruns'k, Br. Am.
 763. **subulatum* *Myrin.*, La.
 764. *uncinatum* *Mitt.*, Pac. Coast.
 765. **cylindrocarpum* *Aust.*, Oregon.

Tribe II. NECKERACEÆ.

Family I. CRYPHLEÆÆ.

111. *CRYPHLEA* Mohr.
 766. *glomerata* Sch., N. J., So. Sts.
 " var. *pendula* (*C. pendula* L. & J.), Fla.
 767. *nervosa* H. & W., So. Sts.
 768. *Ravenellii* Aust., Ga.
 769. *Schiedeana* C. M., Mex.
 770. *reticulata* Besch., Mex.
 771. *nitidula* Sch., Mex.
 772. *cuspidata* Sch., Mex.
 773. *leptophylla* Sch., Mex.
 774. *pinnata* Sch., Mex.
 775. *Orizabæ* Sch., Mex.
 776. *filiformis* Bridl., Mex.
 777. *pachycarpa* Sch., Mex.
 778. *patens* Horusch., Mex.
 779. *polycarpa* Sch., Mex.
 780. *Sartorii* Sch., Mex.
 781. *intermedia* C. M., Mex.
 782. *decurrens* C. M., Mex.
 783. *attenuata* Sch., Mex.
112. *ACROCRYPHLEA* Sch.
 784. *Mexicana* Sch., Mex.
113. *DENDROPOGON* Sch.
 785. *rufescens* Sch., Mex.

Family II. LEPTODONTEÆ.

114. *LEPTODON* Mohr.
 786. *trichomitrium* Mohr., No. and East. U. S., Br. Am.
 " var. *immersus* S. & L., O., So. Sts.
 787. *Ohioensis* Sull., O., Ind.
 788. *nitidus* Lindb., Can.
 789. *circinatus* Sull., Cal.
115. *ALSIA* Sull.
 790. *Californica* H. & A., Pac. Coast.
 791. *longipes* S. & L., Pac. Coast.
 792. *abietina* (Hook.), Sull., Pac. Coast.

Family III. NECKEREE.

116. *PHYLLOGONIUM* *Brid.*
793. *viride* *Brid.*, Mex.
117. *NECKERA* *H.*
A. *Capsule immersed.*
794. *pennata* *Hedw.*, Atl. and West. Sts., Col., Mex.
795. *oligocarpa* *Br. Eu.*, N. E., N. Y., Col., N. Mex., Br. Am.
796. *Menziesii* *Hook.*, Pac. Coast.
797. *Douglasii* *Hook.*, Pac. Coast.
798. *undulata* *Hedw.*, Mex., Fla.
799. *disticha* *Hedw.*, Fla., Mex.
800. *chlorocaulis* *C. M.*, Mex.
801. *Ehrenbergii* *C. M.*, Mex.
802. *Hornschuchiana* *C. M.*, Mex.
803. *angustifolia* *C. M.*, Mex.
804. *leptophylla* *Sch.*, Mex.
805. *Liebmanni* *Sch.*, Mex.
806. *pachycarpa* *Sch.*, Mex.
807. *Orbignyana* *Ltz.*, Mex.
B. *Capsule exserted.*
808. *complanata* *Hedw.*, N. E., Pa., Tenn.
809. *pumila* *Hedw.*, N. Am.
810. *urnigera* *C. M.*, Mex.
811. *orthorrhyncha* *Besch.*, Mex.
812. *microcarpa* *Sch.*, Mex.
813. **Caloosicensis* *Aust.*, Fla.
118. *HOMALIA* *Brid. (Omalia.)*
814. *trichomanoides* (*Schreb.*), N. E. and Mid. Sts., Br. Am.
815. *gracilis* *Jax.*, N. Y., N. J.
816. *obtusata* *Mitt.*, Br. Columb.
817. *glabella* *Brid.*, Mex.
818. *Mohriana* *C. M.*, Mex.
819. *penduliramea* *C. M.*, Mex.

Family IV. PILOTRICHEE.

119. *PILOTRICHELLA* *C. M.*
A. *Orthostichella.*
820. *Ludoviciae* *C. M.*, Gulf Sts.
821. *tetragona* *C. M.*, Mex.
822. *rigida* *C. M.*, Mex.
823. *cymbifolia* (*Sall.*), Fla.

824. *imbricata* Schwg., Mex.
 825. *pulehella* Sch., Mex.
 826. *Mexicana* Sch., Mex.
B. Eupilotrachelia.
 827. *cochlearifolia* C. M., Mex.
 " var. *flagellifera.* Mex.
 828. *turgescens* C. M., Mex.
 829. *nigricans* Nees, Mex.
C. Pupillaria.
 830. *capillaris* C. M., Mex.
 831. *Deppii* Horusch., Mex.
 832. *consanguinea* Hpe., Mex.
 833. *Dubyana* Hpe., Mex.
 834. *subulifolia* Sch., Mex.
 835. *nigrescens* C. M., Mex.
 836. *imponderosa* Tayl., Mex.
 837. *longifolia* Sch., Mex.
 838. *illecebra* C. M., Mex.
 839. *teres* Mitt., Mex.
 840. *sinuata* C. M., Mex.
D. Meteoridium.
 841. *remotifolia* Horusch., Mex.
 842. *salvatorica* Augst., Mex.
120. METEORIUM *Brid.*
 843. *pendulum* Sull., La., Mex.
 844. *nigrescens* (Swartz.) Fla., Mex.
 845. *patulum* C. M., Mex.
 846. *tenue* Sch., Mex.
 847. *diversifolium* Besch., Mex.
 848. *dichados* Sch., Mex.
 849. **Joorii* Aust., La.
121. CALLICOSTA *C. M.*
 850. *delicatula* Besch., Mex.
122. PTEROBRYUM *Horusch.*
 851. *densum* Horusch., Mex.

Family V. LEUCODONTEAE.

123. LEUCODON *Schwg.*
 852. *julacens* (Hrdw.) Schwg., East. U. S.
 853. *brachypus* Brid., Mid. Sts., Can.
 854. *Domingensis* Spreng., Fla.

124. *PTEROGONIUM Swartz.*
 855. *gracile Swartz.* Pac. Coast.
 " *var. duplicato-serratum Hpe.,* Oregon.
 856. *brachypterum Mill.,* Br. Am.
125. *ANTITRICHIA Brid.*
 857. *entripendula Brid.,* Br. Am., Pac. Coast, N. C.
 " *var. gigantea,* Br. Am., Pac. Coast.
 858. *Californica Sull.,* Br. Am., Pac. Coast.
126. *ASTRODONTIUM Schuy.*
 859. *cryptotheca Hpe.,* Mex.
 860. *curvirostre Hpe.,* Mex.
 861. *tenne Besch.,* Mex.
 862. *submersum Hpe.,* Mex.
127. *PRINODON C. M.,*
 863. *densus C. M.,* Mex.
 " Mex.
128. *CRYPTOTHECA Hornsch.,*
 864. *cochlearifolia Hornsch.,* Mex.
 " Mex.

Tribe III. DALTONIACEÆ.

Family I. DALTONIÆÆ.

129. *DALTONIA H. & T.*
 865. *splachnoides H. & T.,* Mex.
 866. *crispata Hornsch.,* Mex.
130. *LEPIDOPHYLUM Brid.*
 867. *Deppeanum C. M.,* Mex.
 868. *subnerve Brid.,* Mex.
 869. *Decaisnei Besch.,* Mex.
 870. *nitidum Besch.,* Mex.
 871. *apophysatum Hpe.,* Mex.
 872. *piliferum Besch.,* Mex.
 873. *Mohrianum C. M.,* Mex.
 874. *genuflexum C. M.,* Mex.
 875. *falcatulum C. M.,* Mex.
131. *HOOKEERIA Tayl.*
 876. *acutifolia Hook.,* O., Alleg'y Mts., N. C., Cal.
 877. *varians Sull.,* Fla.
 878. *albicans Hook.,* Mex.
 879. *Liebmanni Sch.,* Mex.
 880. *cruceana Duby.,* Mex., Fla.

881. *scabriseta* Hook., Mex.
 882. *ciliata* Sch., Mex.

Tribe IV. FABRONIACEÆ.

Family I. FABRONIÆÆ.

132. FABRONIA *Raddi*.
 883. *Wrightii* Sull., Tex., Col.
 884. *pusilla* *Raddi*, S. Car., Pac. Coast.
 885. *Ravenelii* Sull., S. Car.
 886. *gymnostoma* S. & L., N. Mex., Tex., Ill.
 887. *Carolina* S. & L., S. Car.
 888. *Donnellii* Aust., Fla.
 889. *octoblepharis* (Sch.), N. J., Ind.
 890. *Hampeana* Sond., Mex.
 891. *polycarpa* Hook. (*F. flavinervis* C. M.), Mex.
 " var. *patens*, Mex.
 892. *flavinervis* C. M., Mex.
133. CLASMATODON *H. & W.*
 893. *parvulus* (*Hpc.*) *H. & W.*, So. Sts., Ind., Ill.
 " var. *rupestris*, N. J., So. Sts.
134. ANACAMPTODON *Brid.*
 894. *splachnoides* *Brid.*, Can. to Gulf Sts.

Family II. MYRINIÆÆ.

135. MYRINIA *Sch.*
 895. *pulvinata* B. & S., Can., Br. Columb.

Tribe V. LESKEACEÆ.

Family I. RHEGMATODONTEÆ.

136. RHEGMATODON *Brid.*
 896. *filiformis* Sch., Mex.
 897. *hypnoides* Sch., Mex.
 898. *fusco-luteus* Sch., Mex.

Family II. LESKEÆÆ.

137. MYURELLA *Sch.*
 899. *Careyana* Sull., N. E. and Mid. Sts., Can.

900. *julacea Villars*, N. Y., N. J., Can., Rky. Mts.
 901. *apiculata Hub.*, Br. Am.
138. *LESKEA Hedw.*
 902. *denticulata Sull.*, East, Mid. and West. Sts., Ala., La.
 903. *Austini Sull.*, Pa., N. J., Ill.
 904. *polycarpa Ehr.*, U. S., Br. Am.
 905. *obscura Hedw.*, U. S., Br. Am.
 906. *nervosa Myrin.*, N. Y., Wht. Mts., Br. Am., Col.
 907. **microcarpa Sch.*, Ala.
 908. *circinalis Hpe.*, Mex.
 909. *Mexicana Besch.*, Mex.
 910. *cæspitosa Brid.*, Mex.
 911. **Wollei Aust.*, N. Y. and West'd.
139. *THELIA Sull.*
 912. *hirtella Hedw.*, East. U. S.
 913. *asprella (Sch.)*, East. U. S.
 914. *Lescurii Sull.*, N. J., Pa., So. Sts.
 915. **robusta Duby.*, Fla.
140. *ANOMODOX H. & T.*
 916. *rostratus (H.) Sch.*, East. Mid. and West. Sts., Br. Am.
 917. *tristis H. & T.*, Throughout U. S.
 918. *attenuatus Hartm.*, East. Mid. and West. Sts., Br. Am.
 919. *obtusifolius Br. Eu.*, East. Mid. and West. Sts., Br. Am.
 " *var. fragilis*, N. J., Pa.
 920. *apiculatus B. & S.*, East., Mid. and West. Sts., Br. Am.
 921. *viticulosus (L.) H. & T.*, East., Mid. and West. Sts., Br. Am.
 922. *Toccoæ S. & L.*, Ga., La.
 923. *Californicus Lc.*, Cal.
141. *HELICODONTIUM Schleg.*
 924. *tenuirostre Schleg.*, Mex.
142. *HAPLOHYMENIUM Dz. & Molk.*
 925. *densum Sch.*, Mex.

Family III. PSEUDOLESKEÆ.

143. *PSEUDOLESKEA B. & S.*
 926. *atrovirens Dicks.*, N. E., Br. Am.
 " *var. brachyclados*, Col.
 927. *tectorum Braun, (Hyp. dimorphum Brid.)*, Wht. Mts.
 928. *prælonga Sch.*, Mex.
 929. *subcatemulata Sch.*, Mex.

Family IV. THUIDIÆ.

144. HETEROCLADIUM *Br. Eu.*,
 930. heteropterum *B. & S.*, Br. Am.
 931. procurrans *Mitt.*, Br. Am.
145. THUIDIUM *Sch.*,
 932. pygmæum *Br. Eu.*, Mid. Sts., O.
 933. minutulum *Hedw.*, Atl. Sts. and West'd, Gulf Sts., Mex.
 934. *Alleni Aust.*, N. J.
 935. gracile *B. & S.*, West. N. Y., Pa. to Br. Am.
 " var. *Lancastriense* N. Y., N. J., Pa., O.
 " var. *Ravenellii*, S. Car., Gulf Sts.
 936. æstivale *Aust.*, N. E., Mid. Sts.
 937. delicatulum *Hedw. (tamariscinum)*, Br. Am. to Fla., Mex.
 " var. *Mexicanum*, Mex.
 938. recognitum *Hedw. (delicatulum of Am. authors.)*, N. J., Pa. to }
 Br. Am. }
 939. calyptratum *Sull.*, Cal.
 940. Whippleanum *Sull.*, Cal.
 941. remotifolium *Græ.*, No. West. Am.
 942. crispifolium *Hook.*, Br. Am.
 943. leuconeuron *S. & L.*, Cal.
 944. abietinum (*L.*), No. and East. U. S., Br. Am.
 945. Blandowii *W. & M.*, No. and East. U. S., Col., Pac.
 946. paludosum (*Sull.*), No. and East. U. S., Col.
 947. Virginianum *Sch.*, Mex.
 948. glaucescens *Sch.*, Mex.
 949. Schiedeanum *C. M.*, Mex.
 950. Schlumbergeri *Sch.*, Mex.
 951. tomentosum *Sch.*, Mex.
146. RAUIA *Aust.*
 952. scita *Aust. (Hypnum scitum Beauv.)*, N. J., O.

Tribe VI. HYPNACÆ.

Family I. PTRIGYNANDRÆ.

147. PTRIGYNANDRUM *Hedw.*
 953. filiforme *Hedw.*, N. E., Mid. Sts., Br. Am., Pac.
 954. Domingense *Spreng.*, Mex.

Family II. ORTHOTHECIÆ.

148. PLATYGRUM *B. & S.*
 955. repens *Br. Eu.*, No. and East. U. S., Br. Am.

149. *PYLAISSIA* *Sch.*
 956. *intricata* (*H.*) *Sch.*, No. and East. U. S., Col., Br. Am.
 957. *velutina* *Br. Eu.*, N. J. to Can.
 958. **heteromalla* *Mitt.*, Br. Am.
 959. *polyantha* (*Schreb.*), Col., Br. Am.
 " var. *Jamesii* (*S. & L.*), N. E.
 " " *subdenticulata* (*Sch.*), N. J. to O.
 960. *falcata* *Sch.*, Mex.
 961. *subfalcata* *Sch.*, Mex.

Family III. LINDIGIÆ.

150. *LINDIGIA* *Hpe.*
 962. *tenella* *Hpe.*, Mex.

Family IV. CYLINDROTHECIÆ.

151. *CYLINDROTHECIUM* *Sch.*
 963. *sedatrix* (*Hedw.*), East. U. S., Gulf Sts., East. Br. Am.
 964. *cladorrhizans* *Hedw.*, East. U. S., Gulf Sts.
 965. *brevisetum* (*Wils.*) *Br. Eu.*, N. J. to Mo., Can.
 966. *compressum* (*Hedw.*), Pa. to Mo.
 967. *Sullivantii* (*C. M.*), Tex., N. Car.
 968. *Drummondii* *Br. Eu.*, So. Sts.
 969. *concinnum* (*D. N.*), Col.
 970. *polycarpum* *Sch.*, Mex.
 971. *brevirostre* *Sch.*, Mex.
 972. *abbreviatum* *Sch.*, Mex.
 973. *brevipes* *Sch.*, Mex.
 974. *stenocarpum* *Sch.*, Mex.
 975. *complanatum* *Sch.*, Mex.
 976. *Orizabanum* *Sch.*, Mex.
 977. *nitens* *Sch.*, Mex.
 978. *subsecundum* *Sch.*, Mex.
 979. *aureseens* *Sch.*, Mex.
 980. *Mechoacanum* *C. M.*, Mex.
 981. *neglectum* *C. M.*, Mex.
 982. *distans* *C. M.*, Mex.
 983. *cochleatus* *C. M.*, Mex.
152. *ROZEA* *Besch.*
 984. *chrysea* *Besch.*, Mex.
 985. *Bourgæana* *Besch.*, Mex.

986. *subjulacea Besch.*, Mex.
 987. *viridis Besch.*, Mex.
 988. *Schimperi Besch.*, Mex.
 989. *stricta Besch.*, Mex.
 990. *Andrieuxii Besch.*, Mex.
153. *LEPTOHYMENIUM Schweg.*
 991. *myuroides Sch.*, Mex.
 992. *longisetum Hpe.*, Mex.
 993. *cylindrocaule Hpe.*, Mex.
 994. *affine Sch.*, Mex.
 995. *julaceum Sch.*, Mex.
 996. *Bonplandi Besch.*, Mex.
 997. *patulum (L.) Sch.*, Mex.
154. *POROTRICHIUM Brid.*
 998. *Mexicanum Sch.*, Mex.
155. *CLIMACIUM W. & M.*
 999. *dendroides (D.) W. & M.*, N. Y., N. J., Br. Am.
 1000. *Americanum Brid.*, U. S., Br. Am.
 " *var. fluitans.*, Mid. Sts.
 1001. *Ruthenicum (C.) Wein.*, Alaska.
156. *ISOTHECIUM Brid.*
 1002. *stoloniferum Hook.*,
 " *var. speenliferum Mitt.*, Br. Am.
 " *var. aenticuspis Mitt.*, Pac. Coast.
 1003. **Breverianum Lx.*, Pac. Coast.
 1004. **aggregatum Mitt.*, Pac. Coast.
 1005. **aplocladum Mitt.*, Pac. Coast.
 1006. **lentum Mitt.*, Pac. Coast. Col.
157. *ORTHOTHECIUM Sch.*
 1007. *rufescens (Dicks.)*, Arc. regions.
 1008. *chryseum (Schweg.)*, Br. Am., Col.
 1009. *rubellum (Mitt.)*, Rky. Mts., Arc. regions.
158. *HOMALOTHECIUM Sch.*
 1010. *subcapillatum (Hedw.)*, East. U. S.
 1011. *pseudosericeum C. M.*, Oregon.

Family V. CAMPTOTHECIACE.

159. *CAMPTOTHECIUM Sch.*
 1012. *æneum Mitt.*, Br. Columb.

1013. nitens (Schreb.), No. and Mid. Sts., Br. Am., Col
 1014. pinnatifidum S. & L., Pac. Coast.
 1015. megaptilum S. & L., Oregon.
 1016. lutescens Hedw., Pac. Coast.
 1017. Nuttallii Wils., Pac. Coast.
 " var. stoloniferum, Pac. Coast.
 1018. arenarium Lx., Pac. Coast.
 1019. Nevadense Lx., Pac. Coast.
160. **PTYCHODIUM** Sch.
 1020. radicosum Mitt., Br. Am.
161. **BRACHYTHECIUM** Sch.
A. pedicel smooth.
 1021. lætum Brid., U. S., Br. Am.
 1022. albicans Neek, Br. Am., Columb.
 1023. acuminatum (Beauv.), N. E., Mid. and West. Sts., Br. Am.
 " var. rupinicolum, O., Rky. Mts.
 " " setosum (L. setosa Hedw.), East. U. S.
 1024. salebrosum (Horn.), U. S., Br. Am.
 " var. Texanum, Texas.
 1025. acutum Mitt., N. E. and Mid. Sts., O., Can., Br. Columb.
 1026. Utahense Jas., Utah, Col.
 1027. Hillebrandi Lx., Cal.
 1028. collinum Schl., Br. Am., Col., Cal.
B. pedicel rough.
 1029. campestre (Bruch), N. Bruns'k to Mid. Sts.
 1030. rutabulum (L.), East. and No. U. S., Br. Am.
 1031. rivulare (Bruch), East. and No. U. S., Br. Am.
 1032. Starkii (Brid.), East. and No. U. S., Br. Am.
 1033. velutinum (L.), East. and No. U. S., Br. Am., Col.
 1034. plumosum (Swartz), East. and No. U. S., Br. Am., Col.
 " var. populeum (H. populeum Hedw.), N. E. to O., {
 Sierra Nev. Mts. }
 " " homomallum, N. C.
 1035. Novæ Angliæ S. & L., N. E. to Ill. and So'd.
 " var. rapestre, Mid. Sts.
 1036. reflexum Br. Eu., N. E. to Pa., Can.
 " var. micropus Aust. (B. micropus Sch.), Owen Sd.
 1037. Fendleri Sull., N. Mex., Col.
 1038. asperrimum Mitt., Br. Am., Pac.
 1039. *declivum Mitt., Br. Am., Pac.
C. subgenus uncertain.
 1040. Bolanderi Lx., Cal.
 1041. biventosum C. M., La., Fla.
 1042. *œdipodium Mitt., Br. Am.

1043. *frigidum* C. M., Mex.
 1044. *Dunnellii* Aust., Fla.
 1045. *flexiventrosus* C. M., Mex.
 1046. *cladoneuron* C. M., Mex.
 1047. *comatifolium* C. M., Mex.
 1048. *brunneo-alare* C. M., Mex.
162. *SCLEROPODIUM* Sch.
 1049. *illecebrum* Schweg., Cal.
 1050. *cæspitosum* Wils., Br. Am., Cal.
 1051. *Californicum* Lx., Cal.
163. *EURYNCHIUM* Sch.,
A. pedicel smooth.
 1052. *myosuroides* L., Pacific.
 1053. *Boseii* Schweg., N. E., Mid. and West. Sts.
 1054. *strigosum* (Hoffm.), N. E., Mid. and West. Sts., Br. Am., Pac.
 1055. **diversifolium* (Sch.), N. E., Mid. and West. Sts., Br. Am., Pac.
 1056. *Mexicanum* Besch., Mex.
B. pedicel rough.
 1057. *Sullivantii* (R. Spruce), N. E., Mid. and West. Sts., Can.
 1058. *hians* (Hedw.), N. E., Mid., West. and Gulf Sts., Br. Am.
 1059. *piliferum* (Schreb.), N. E. to Pa., and O., Br. Am.
 1060. *Stokesii* (Turn.), N. E., Br. Am., Pac. Coast.
 1061. *colophyllum* Sull., Cal.
 1062. *Oreganum* Sull., Br. Am., Pac. Coast.
 1063. **velutinoides* (Br.), Palisades.
 1064. *punilum* Wils. (*Hyp. tenellum*), Wht. Mts., Heldbg. Mts., Del. {
 Water Gap. }
164. *RHYNCHOSTEGIUM* Sch.
 1065. *deplanatum* (Sch.), No. and East. U. S., Br. Am.
 1066. *serrulatum* (Hedw.), No. and East. U. S., Br. Am.
 1067. *rusciforme* (Weis), No. and East. U. S., Br. Am., Pac. Coast.
 1068. *subrusciforme* C. M., Mex.
 1069. *expallescens* C. M., Mex.
 1070. *leptomero carpum* C. M., Mex.
 1071. *demissum* Wils., N. Mid. and West. Sts.
 " var. *Marylandicum*, N. E. and So. Sts., and Mts.
 " " *Carolinianum*, Ga., N. and S. Car.
 1072. *microcarpum* C. M., O., Mid. and So. Sts., Br. Am.
 " var. *anisocarpem* (*H. adimistum*), N. J. to Fla., O.
 1073. *recurvans* Schweg. (*R. delicatulum* Jas.), N. E., Mid. and West. {
 Sts., Br. Am., Mex. }
 1074. *cylindrocarpum* C. M., Br. Am., N. J. to O., and So. along {
 Alleg'y Mts. to Ga. }

1075. *geophilum* *Aus.* (*H. depressum* *Jas.*), Mid. Sts., O.
 1076. *pallescens* var. *protruberans* (*R. Jamesii* *Sull.*), N. H.
 1077. *scitulum* *Aust.*, Arc. Am.
 1078. *Royæ* *Aust.*, Cal.
 1079. *Brandegei* *Aust.*, Col.
 1080. *Novæ-Cæsareæ* *Aust.* (*H. micans* (*Wils.*) *non Swartz.*), Alleg'y Mts.
 1081. *Hampei* *Besch.*, Mex.
 1082. *cnpressinum* *Besch.*, Mex.
 1083. *callistomum* *Besch.*, Mex.
 1084. *Huitomaleonum* *C. M.*, Mex.
 1085. *Blandum* *Hpe.*, Mex.
 1086. *leptomerocarpum* *C. M.*, Mex.
 1087. *micans* (*Swartz*) *Sull.*, N. E. to Fla. and Ia.
 " var. *albumum* (*H. fulvum* *H. & W.*), So. U. S.
165. **TIAMNIUM** *Br. Eu.*
 1088. *Alleghaniense* *C. M.*, East. and West. U. S., Br. Am.
 1089. *Bigelowii* *Sull.*, Pac. Coast.
 1090. **alopecurum* (*L.*), Pac. Coast.
 1091. **Neckeroides* *Hook.*, Pac. Coast.

Family VI. HYPNÆ.

166. **PLAGIOTHECIUM** *Br. Eu.*
 1092. *piliferum* *Swez.*, Br. Am.
 1093. *latebricola* (*Wils.*), N. Y., N. J.
 1094. **geminus* *Mitt.*, Br. Am., Rky. Mts.
 1095. *elegans* (*Hook.*), Mid. Sts., Br. Am., Vanc'r I.
 " var. *terrestris*, N. J.
 " .. *gracilis*, N. J.
 " .. *subfalcatum*, Alleg'y Mts., N. E. to N. Car., O.
 1096. *Mullerianum* *Sch.*, N. E. and Mid. Sts.
 1097. *Passaicense* *Aust.*, N. J., Can.
 1098. *pulchellum* (*Dicks.*), N. E., N. Y., Br. Am., Pac.
 " var. *nitidulum*, N. E., N. Y., Br. Am., Col.
 1099. *turfacem* *Lindbj.*, N. J. to Can., O., Pac.
 1100. *striatellum* *Bridl.* (*Muhtenbeckii* *Br. Eu.*), N. E., Mid. Sts., Br. Am.
 " var. *chrysophyloides*, N. J.
 1101. *denticulatum* (*Dill.*), U. S., Br. Am.
 " var. *pusillum*, N. Y., N. J.
 " .. *lætum*, N. E. and Mid. Sts., Col.
 1102. *sylvaticum* *L.*, N. E., Mid. and West. Sts., Br. Am.
 " var. *Sullivantiae* (*Sch.*), N. E., Mid. and West. Sts.,
 Br. Am. }
 " .. *Roseanum* (*Hpe.*), N. J.

1103. undulatum, (*L.*), Pac. Coast.
 1104. Donianus *Sw.*, Br. Columb., Wash. Ter.
 1105. Chrismani *C. M.*, Mex.
 1106. subsimplex *Hedw.*, Mex.
 1107. pseudo-Silesiacum *Sch.*, Mo.
167. *AMHLYSTEGIUM Br. Eu.*
1108. Sprucei (*Bruch.*), Col., Br. Am.
 1109. confervoides (*Brid.*), N. J. to O., Col., Br. Am.
 1110. subtile *Hedw.*, N. E., N. J., Col., Br. Am.
 1111. adnatum (*Hedw.*), N. E., Mid. and West. Sts., Col., Br. Am.
 " var. subserratum, Ohio.
 1112. Leseurii *Sull.*, Vt., Mid. Sts., Geo.
 1113. compactum *C. M.*, N. Y., O., Br. Am., Col. Pac. Coast.
 1114. serpens (*L.*), Common.
 " var. minutissimum (*S. & L.*), Pa., O., Col., Br. Am.
 " " tenellum, Ohio.
 " " irriguum (*H. & W.*), N. E., Mid., West. and So. Sts.
 " " noterophilum, N. E., Mid. and West. Sts., Rky. {
 Mts., Br. Am. }
 " " longifolium, O., Fla.
 " " radicale (*Beauv.*), N. E., Mid., West. and So. Sts., {
 Br. Am., Pac. Coast. }
 " " " subjulaceum, N. J.
 " " " parvulum, N. J.
 " " orthocladon (*Beauv.*), U. S., Br. Am.
 " " brevifolium (*A. oligorrhizon Gumb.*), U. S., Br. Am.
 " " fontanum, N. J., Pa.
 " " chrysophylloides (*A. curtipes Br. Eu.*), N. E. and {
 Mid. Sts. }
 " " Juratzkanum (*Sch.*), Pa.
 " " fluviatile (*Swartz.*), Mid. Sts., Can.
 1115. riparium (*L.*), U. S., Br. Am., G'land.
 " var. cariosum, No. and East. U. S., and West'd.
 " " vacillans (*Sull.*), Wht. Mts., Can.
 1116. sordidum *Mitt.*, Mex.
168. *HYPNUM Dill.*
A. Campylophyllum Br. Eu.
1117. Halleri (*L.*), Br. Am.
B. Campylium Sull.
1118. hispidulum *Brid.*, U. S., Br. Am.
 " var. Sommerfeltii (*Myrioc.*), N. E., Br. Am., Mex.
 1119. Bergenense *Aust.*, N. E. to Fla.
 1120. chrysophyllum *Brid.*, N. E., Mid. and West. Sts., Br. Am.
 " var. caespitosum, Appalachian.

- chrysophyllum* var. *rupestre*, Appalachian.
 " " *stelloides*, Appalachian.
 " " *uncinifolium*, Appalachian.
 1121. *stellatum* Schreb., N. E., Mid. and West. Sts., Br. Am.
 " var. *protensum*, Mid. Sts., Br. Am.
 1122. *polygamum* (Sch.), N. Y., N. J.
C. Harpidium Sull.
 1123. *aduncum* Hedw., East., Mid. and West. Sts., Pac. Coast.
 " var. *Kneiffi*, Appalachian, Br. Am., Rky. Mts.
 " " *polycarpum*, Col.
 " " *gracilescens*, U. S.
 " " *giganteum*, N. E., N. J., Minn.
 " " *tenuis*, Col.
 1124. *verniosum* Lindbj., N. Y., N. J., Br. Am.
 1125. *examulatum* Gumb., N. Bruns'k, Can., Mid. Sts., Rky. Mts.
 1126. *fluitans* (L.), East., Mid. and West. Sts., Col., Br. Am.
 1127. *uncinatum* Hedw., East., Mid. and West. Sts., Pac. Coast, Br. }
 Am., G'land. }
 1128. *Jamesii* Aust., Wht. Mts.
 1129. *hamifolium* Sch., Conn.
 1130. *Sendtneri* Sch., N. Y., Can., O.
 1131. *subpungens* C. M., Mex.
D. Cratoneuron Sull.
 1132. *filicinum* L., N. E., Mid. and West. Sts., Br. Am.
 1133. *commutatum* Hedw., N. Y., Can., Col.
 " var. *falcatum*, Rky. Mts.
E. Rhytidium Sull.
 1134. *rugosum* Ehr., N. E., Mid. and West. Sts., Br. Am.
 1135. *robustum* Hook., Pac. Coast.
F. Calliergon.
 1136. *cordifolium* Hedw., U. S., Br. Am., G'land.
 1137. *giganteum* Sch., N. Y., O., Wis., Col., Br. Am., Pac. Coast.
 1138. *cuspidatum* L., U. S., Br. Am.
 1139. *Schreberi* Willd., U. S., Br. Am., G'land.
 1140. *stramineum* Dicks., Throughout Br. Am., and in Mts. So. G'land.
 1141. *sarmentosum* Wahl., N. E., G'land.
 1142. *trifarium* W. & M., Br. Am., O.
 1143. *Richardsoni* Mitt., Br. Am., G'land.
G. Hypnum.
 1144. *molluscum* Hedw., N. E., Mid. and West. Sts., Br. Am., Col.
 1145. *Vaucherii* L., Br. Am.
 1146. *cupressiforme* L., Appalachian, Col.
 " var. *filiforme*, Col.
 " " *resupinatum*, N. J.

1147. *imponens* Hedw., N. E., Mid. and West. Sts., Br. Am.
 1148. *subimponens* Lx., (*S. plumifer* Mitt.), * Pac. Coast.
 1149. *pallescens* (Hedw.) Br. (*H. reptile* Mx.), U. S., Br. Am.
 " *var. protruberans* (Brid.) Lindb., (*R. Jamesii* Sull.)
 Icon.), (*H. hamulosum* S. & L.), (*H. pallescens* Musei }
 Appalach.), (*H. depressulum* C. M.), U. S., Br. Am. }
 " *viride* Aust., N. E., Pa., Can.
 1150. *fertile* Scudt., No. Sts., Br. Am., Col., Br. Columb.
 1151. *curvifolium* Hedw., N. E., Mid. and West. Sts., Br. Am.
 " *var. australe* Aust., N. J., So. Sts.
 1152. *Haldanianum* Gree., N. E., Mid. and West. Sts., Br. Am.
 1153. *nemorosum* Koch, Pa., Va., No. and So. Car.
 1154. *pratense* Koch., N. E., Mid. and West. Sts., Br. Am.
 1155. *circinale* Hook., Br. Am., Pac. Coast.
 1156. **circulare* Hook., Arc. regions.
 1157. **complexum* Mitt., Br. Am.
 1158. *Wrightii* Sull., Tex., N. Mex., Fla.
 1159. *plicatile* Mitt. (*H. Watsoni* L. & J.), Col., Utah, Br. Am., Arc. reg.
H. Scorpidium Br. Eu.
 1160. *scorpioides* Dill., O., Br. Am.
 I. Ptilium Sull. (*Ctenium* Br. Eu.).
 1161. *Crista-castrensis* L., No. and East. U. S., Br. Am.
 J. Linnobium Br. Eu.
 1162. *obtusifolium* W. & M., Br. Am.
 1163. *palustre* L., N. J. to Can., Col.
 1164. *arcticum* Somf., Br. Am., Rky. Mts., Pac. Coast.
 1165. *molle* Dicks., N. Y., N. J., N. Car., Col., Br. Am.
 1166. *ochraceum* Br. Eu., No. and East. U. S., Col., Br. Am.
 1167. *alpestre* Swartz, Br. Am.
 1168. *eugyrium* Sch., N. E., N. Y., Pa., Tenn., Col., Br. Am.
 1169. *montanum* Wils., Whf. Mts.
 1170. *Closteri* Aust., N. Y., N. J.
K. subgenus uncertain.
 1171. *Reichenbachii* Lorentz., Mex.
 1172. *occidentale* S. & L., Oregon.
 1173. *homalostegium* C. M., Ala.
 1174. *thelistegium* C. M., Fla., Mex.
 1175. *aluminicolum* C. M., Mex.
 1176. *affine* Hook., Mex.
 1177. *Mohrianum* C. M., Mex.
 1178. *LeJolisii* Besch., Mex.
 1179. *pendulinum* Hpe., Mex.
 1180. *Salleanum* Besch., Mex.
 1181. *duriusculum* Sch., Mex.
 1182. *planum* Brid., Fla.

1183. *Caloosicensis Aust.*, Fla.
 1184. *divaricatissimum C. M.*, Mex.
 1185. *Miradericum C. M.*, Mex.
 1186. *Cordovense C. M.*, Mex.
 1187. *cuspidatum Lev.*, Mex.
 1188. *Coloradense Aust.*, Col.
 1189. *radiculosum C. M.*, Mex.
160. *OCOMIUM Br. Eu.*, (*Pleurozium Sull.*)
splendens Hedw., U. S., Br. Am.
 1191. *brevirostre Ehrh.*, U. S., Br. Am.
 1192. *triquetrum (L.)*, U. S., Br. Am.
 1193. *squarrosum L.*, Me., N. H., N. Y., Pa.
 1194. *Oakesii Sull.*, Through't Br. Am., Mts. N. E., N. Y., S. Car.
 1195. *umbratum Ehrh.*, Br. Am., Mts. N. E., N. Y., Pa.
 1196. *lorenum Dill.*, Pac. Coast.
 1197. *Ehrenbergianum C. M.*, Mex.
 1198. *Flemingii Aust.*, Vanc'r I.
 1199. *Alaskanum S. & L.*, Alaska.

Family VII. HYPOPTERIGIACEÆ.

170. *PLICOPHYLLUM Brid.*
torquatum Brid., Mex.
171. *HYPOPTERIGIUM Brid.*
 1201. *tamarisci Brid.*
 1202. *pseudotamariscinum C. M.*, Mex.
 1203. *incrassato-limbatum C. M.*, Mex.
172. *RHACOPILUM Brid.*
 1204. *tomentosum Brid.*, Mex., La.
 " var. *gracile*, Mex.
 1205. *angustatum Sch.*, Mex.

BRYINÆ ANOMALÆ.

Order I. HOLOCARPÆ.

Tribe I. ARCHIDIACEÆ.

173. *ARCHIDIUM Brid.*
 1206. *Ohioense Sch.*, N. J. to O., S. Car., Ala., W. Fla.
 1207. *tenerrimum Mitt.*, Fla.
 1208. *Donnellii Aust.*, Md., Va., S. Car.

1209. *Lescurii* Aust. (*A. longifolium* L. & J.), Fla., Ala., La.
 1210. *Hallii* Aust., Tex.
 1211. *Ravenellii* Aust., S. Car., Fla.

Order II. SCHIZOCARPÆ.

Tribe. ANDRÆACEÆ.

174. *ANDRÆA* Ehr.
 1212. *turgescens* Sch., Mex.
 1213. *petrophila* Ehr., Alleg'y Mts., Br. Am.
 1214. *rupestris* Turn., Alleg'y Mts.
 1215. *crassinervia* Bruch, Wht. Mts.

Order III. STEGOCARPÆ

Tribe. SPIAGNACEÆ.

175. *SPHAGNUM* Dill.
 1216. *Portoricense* Hpe., So. N. J. to Fla.
 1217. *Austini* Sull., Mass., N. J., Newfoundland.
 1218. *papillosum* Lindby., N. J. to Can.
 1219. *cymbifolium* Ehr., Appalachian, Br. Am., Pac. Coast.
 " var. *pycnocladum*, Appalachian.
 " " *squarrosulum*, Appalachian.
 " " *condensatum*, Appalachian.
 1220. *rigidum* (Nees.), Pa. to Ala., Br. Am., Pac. Coast.
 " var. *compactum*, East. U. S., Cal.
 " " *humile*, N. J. to Fla., Ala.
 " " *laxum* Aust., Pa.
 1221. *molle* Sull. (*S. Mulleri* Sch.), N. J. to Fla. and Ala.
 1222. *tenellum* Ehr. (*S. molluscum* Bruch), N. Y., N. J., N. Bruns'k.
 1223. *acutifolium* Ehr., Appalachian, Br. Am., Pac. Coast, G'land.
 " var. *tenellum*, Col.
 " " *confertum*, N. J., Ala.
 " " *purpureum*, Appalachian.
 " " *intermedium*, N. J., Can., N. Bruns'k.
 " " *rubellum*, N. J., Can., N. Bruns'k.
 " " *fuscum*, N. E., N. J., Can.
 " " *robustum*, N. J.
 1224. *fimbriatum* Wils., Br. Am.
 1225. *strictum* Lindby. (*S. Girgensohni* Rus.), N. J., Pa., O., Can.
 1226. *teres* Augstr., N. J., Br. Columb.
 1227. *squarrosum* Pers., No. and Mid. Sts., and West'd, Ala., Br. {
 Am., G'land. }
 " var. *squarrosulum* Lx., Cal.

INDEX GENERUM.

| Genus. | Page. | Genus. | Page. | | |
|------------------|-------|--------|-----------------|------|----|
| Aerocryphæa. | 112 | 32 | Dicranum, | 24 | 9 |
| Alsia, | 115 | 32 | Dicranoweisia, | 15 | 7 |
| Amblyodon, | 92 | 28 | Didymodon, | 47 | 14 |
| Amblystegium, | 167 | 44 | Diphyseium, | 108a | 31 |
| Amphoricium, | 62 | 19 | Discegium, | 78 | 23 |
| Anacamptodon, | 134 | 36 | Dissodon, | 74 | 22 |
| Andræa, | 174 | 48 | Distichium, | 43 | 13 |
| Angstroemia, | 22 | 8 | Drummondia, | 64 | 19 |
| Anodus, | 35 | 12 | Encalypta, | 70 | 22 |
| Anœtangium, | 13 | 7 | Entosthodon, | 82 | 24 |
| Anomodon, | 140 | 37 | Ephemernm, | 1 | 5 |
| Antitrichia, | 125 | 35 | Eurynchium, | 163 | 42 |
| Aphanorrhagma, | 79 | 23 | Eustichium, | 44 | 13 |
| Archidium, | 173 | 47 | Fabronia, | 132 | 36 |
| Astrodontium, | 126 | 35 | Fissidens, | 33 | 11 |
| Atrachylocarpus, | 25 | 10 | Fontinalis, | 169 | 31 |
| Atrichum, | 104 | 29 | Funaria, | 83 | 24 |
| Aulacomnion, | 96 | 28 | Glyphocarpa, | 98 | 29 |
| Barbula, | 52 | 15 | Glyphomitrium, | 61 | 19 |
| Bartramia, | 97 | 28 | Grimmia, | 54 | 17 |
| Bartramidula, | 100 | 29 | Gymnostomum, | 12 | 7 |
| Blindia, | 37 | 12 | Gyroweisia, | 11 | 7 |
| Brachythecium, | 161 | 41 | Haplohymenium, | 142 | 37 |
| Braunia, | 58 | 19 | Hedwigia, | 56 | 18 |
| Breutelia, | 102 | 29 | Hedwigidium, | 57 | 18 |
| Bruchia, | 8 | 6 | Helicodontium, | 141 | 37 |
| Bryum, | 87 | 25 | Helicophyllum, | 170 | 47 |
| Buxbaumia, | 108b | 31 | Heterocladium, | 144 | 38 |
| Callicosta, | 121 | 34 | Holomitrium, | 30 | 11 |
| Calymperes, | 49 | 15 | Homalia, | 118 | 33 |
| Camptothecium, | 159 | 40 | Homalothecium, | 158 | 40 |
| Campylochætium, | 28 | 10 | Hookeria, | 131 | 35 |
| Campylopus, | 27 | 10 | Hylocomium, | 169 | 47 |
| Campylostelium, | 38 | 12 | Hymenostomum, | 10 | 7 |
| Catocopium, | 93 | 28 | Hypnum, | 168 | 44 |
| Ceratodon, | 39 | 12 | Hypopterigium, | 171 | 47 |
| Cinclidium, | 91 | 27 | Isothecium, | 156 | 40 |
| Clasmatodon, | 133 | 36 | Lepidopilum, | 130 | 35 |
| Climacium, | 155 | 40 | Leptobryum, | 85 | 24 |
| Conomitrium, | 34 | 12 | Leptodon, | 114 | 32 |
| Conostorium, | 99 | 29 | Leptohymenium, | 153 | 40 |
| Coscinodon, | 59 | 19 | Leptotrichum, | 41 | 13 |
| Cryphæa, | 111 | 32 | Leskea, | 138 | 37 |
| Cryptotheca, | 128 | 35 | Leucobryum, | 31 | 11 |
| Cylindrothecium, | 151 | 39 | Leucodon, | 123 | 34 |
| Cynodontium, | 18 | 8 | Lindigia, | 150 | 39 |
| Daltonia, | 129 | 35 | Macromitrium, | 65 | 20 |
| Dendropogon, | 113 | 32 | Meesea, | 94 | 28 |
| Desmatodon, | 51 | 15 | Mielichhofsira, | 84 | 24 |
| Dichelyma, | 110 | 31 | Metorium, | 120 | 34 |
| Dichodontium, | 19 | 8 | Microdus, | 21 | 8 |
| Dicranella, | 23 | 8 | Micromitrium, | 66 | 20 |
| Dicranodontium, | 26 | 10 | Mnium, | 90 | 27 |

| Genus. Page. | | Genus. Page. | | | |
|-----------------|-----|--------------|-----------------|-----|----|
| Myrinia, | 135 | 36 | Rauia, | 146 | 38 |
| Myurella, | 137 | 36 | Rhacopilum, | 172 | 47 |
| Nanomitrium, | 2 | 5 | Rhabdoweisia, | 17 | 7 |
| Neckera, | 117 | 33 | Rhegmatodon, | 136 | 36 |
| Octoblepharum, | 32 | 11 | Rhizogonium, | 89 | 27 |
| Oligotrichum, | 105 | 30 | Rhynchostegium, | 164 | 42 |
| Oreoweisia, | 16 | 7 | Rozca, | 152 | 39 |
| Orthothecium, | 157 | 40 | Schistostega, | 73 | 22 |
| Orthotrichum, | 69 | 20 | Scleropodium, | 162 | 42 |
| Paludella, | 95 | 28 | Schlotheimia, | 67 | 20 |
| Pharomitrium, | 45 | 13 | Scouleria, | 53 | 17 |
| Phaseum, | 5 | 5 | Seligeria, | 36 | 12 |
| Philonotis, | 101 | 29 | Sphærangium, | 4 | 5 |
| Phyllogonium, | 116 | 33 | Sphagnum, | 175 | 48 |
| Physcomitrella, | 3 | 5 | Splachnum, | 77 | 23 |
| Physcomitrium, | 81 | 23 | Sporledera, | 7 | 6 |
| Pilopogon, | 29 | 11 | Symblepharis, | 42 | 13 |
| Pilotrichella, | 119 | 33 | Syrrophodon, | 50 | 15 |
| Plagiothecium, | 166 | 43 | Systegium, | 9 | 6 |
| Platygium, | 148 | 38 | Tayloria, | 75 | 23 |
| Pleuridium, | 6 | 6 | Tetraphis, | 71 | 22 |
| Pogonatum, | 107 | 30 | Tetraplodon, | 76 | 23 |
| Polytrichum, | 108 | 30 | Tetrodontium, | 72 | 22 |
| Porotrichum, | 154 | 40 | Thamnum, | 165 | 43 |
| Pottia, | 46 | 13 | Thelia, | 139 | 37 |
| Prionodon, | 127 | 35 | Thuidium, | 145 | 38 |
| Pseudoleskea, | 143 | 37 | Timmia, | 103 | 29 |
| Psilopilum, | 106 | 30 | Trematodon, | 20 | 8 |
| Pterigynandrum, | 147 | 38 | Trichodon, | 40 | 13 |
| Pterobryum, | 122 | 34 | Trichostomum, | 48 | 14 |
| Pterogonium, | 124 | 35 | Ulota, | 68 | 20 |
| Ptychodium, | 160 | 41 | Webera, | 86 | 24 |
| Ptychomitrium, | 60 | 19 | Weisia, | 14 | 7 |
| Pylaisia, | 149 | 39 | Zieria, | 88 | 27 |
| Pyramidula, | 80 | 23 | Zygodon, | 63 | 19 |
| Racomitrium, | 55 | 18 | | | |

ADDITIONS AND CORRECTIONS.

- Sp. 11, for Br. Eu., read Hedw.
 " 12, add syn. (S. triquetrum Amer. authors).
 " 13, for C. M. read Schreb.
 " 15, to hab. add Pa.
 " 24, omit.
 " 26, add var. *ulerothea* Aust., Va.
 " 30, omit Va.
 " 47, read *tophaecum*.
 " 54, *Brotellium* B. & S.
 " 58, 1st var. omit Col.
 " 58, 3d var. add syn. (W. Wolff L. & J.)
 " 70, to 1st var. add N. Y., N. E.
 Gen. 19, read (Dieranum.)
 Sp. 72, for *Rhch.* read *Michx.*
 Gen. 22, read *Angstroemia*.
 Sp. 83, to hab. add N. E.
 " 103, for S. & L. read Sull.
 " 108, for Sch. read Schwgr.
 " 111, for Lind. read Lindbg.
 " 128, for B. & S. read W. & S.
 " 139, read *Hellerianus*.
 After sp. 154 add sp. 154a, *gracileculis* Mitt. Fla.
 Sp. 156 and 165 omit.
 " 179, omit var.
 " 182, add syn. (*F. rupestris* Wils.), Mid. Sts.
 " 183, read *Bourgacanus*.
 " 188, read *tristicha*.
 " 199, for Aust. read (Hedw.) Sch.
 " 202, for *tenue* read *lineare* (Swartz.)
 " 216, for Sch. read Brid.
 " 222, 234 and 537, to hab. add Ill.
 " 225, omit.
 After sp. 261 add 261a, *crispum* Aust., Fla.
 Sp. 293, read *unguiculata*.
 " 299, to hab. add Br. Am.
 " 315, read *Orizabensis*.
 After sp. 329, add sp. 329a *squarrosa* Brid., Tenn.
 Sp. 338 and 394, for Kiz. read Kze.
 " 353, for B. & L. read B. & S.
 " 357, read *plagiopodia*.
 " 373, for Col. read Pac. Coast.
 " 376, for Mid. Sts. read Malne.
 " 383, to hab. add Br. Am.
 " 384, read *lanuginosum*.
 " 386, read *Andrieuxii*.
 " 421, read *Leiboldii*.
 " 444, for Horusch. read Bruch.
 " 449, last var. omit Lake Ont.
 " 454, to hab. add Canada.
 Page 23, sp. Nos. read 518 and 519.
- Gen. 70, for Schrad. read Schreb.
 Sp. 491, for Cal. read Col.
 " 495, read *Selwynii*.
 Gen. 73, for Mohr. read Dicks.
 Sp. 499, for Froel. read Hedw.
 " 503, for (B. & S.) read (Hedw.)
 " 507, for B. & S. read (L.). Add Whit. Mts.
 " 509, for Hornsch. read Hornem.
 " 518, omit Fla.
 After sp. 522 add 522a. *latifolium* Brid., Col.
 Gen. 82, read *Entosthodon* Schwg.
 Sp. 529, for Wohl. read Wahl.
 " 532, read *flavescens*.
 Gen. 84, read *Melchhoferia*.
 " 583, for hab. read N. J. to Fla.
 " 624, read *Didemodontium*.
 " 665, for Brid. read (Hedw.)
 " 681, to hab. add U'land.
 After sp. 684, add 684a, *Mohriana* C. M., La.
 Gen. 90, for Sw. read Swartz.
 Sp. 686, for Allegy read Whit.
 After sp. 687, add 687a, *Mexicana* Sch., Mex.
 After sp. 698, add 698a **calcareo* B. & S., N. E., Br.
 Am., N. C., Col. 638b, *Schlumbergeri* Sch., Mex.
 Gen. 103, for H. read Hedw.
 Sp. 714, read *algerinum*.
 " 719, for Mx., read *Michx.* Add Whit. Mts.
 Gen. 108, for L. read Dill.
 Sp. 752, for Fla. read to Ala.
 " 756, to hab. add Mex.
 After sp. 759, add Family II., *Dichelymema*.
 Sp. 766, to hab. add Conn.
 " 786, to hab. add Ala., La.
 " 787, read *Ohioense*.
 Gen. 117, for H. read Hedw.
 Sp. 811, read *orthorhyncha*.
 Gen. 127, read *Prionodon*.
 Sp. 889, for (Sch.) read (Schleleth.)
 " 914, to hab. add Conn.
 " 934, for N. J. read Conn.
 " 944, to hab. add Col.
 After sp. 951, add 951a, *orthocarpum* Besch., Mex.
 Sp. 967, for Tex. read Tenn.
 " 983, read *cylindricaulis*.
 " 1002, first var. read *spicatiflorum*.
 " 1055, for (Sch.) read B. & S.
 " 1098, for (Dicks.) read (Hedw.)
 " 1098, to var. add syn. (*P. nitidulum* Wahl.)
 " 1101, for (Dill.) read (L.)
 " 1101, to last var. add syn. (*P. letum* Sch.)

)
d Wht. Mts.

brid., Col.

C. M., La.

Sch., Mex.
, & S., N. E., Br.
ergerl Sch., Mex.

ld Wht. Mts.

helymeæ.

.)

um Besch., Mex.

rum.

y.)
dulum Wahl.)

, lectum Sch.)

