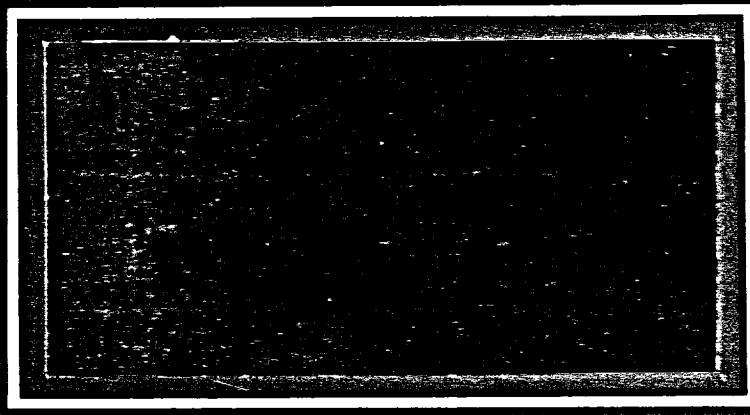


doc
CA1
EA
89T16
ENG



Received

September
28, 1989

.b3540856 (E)

TABULAR RESULTS

THE APARTHEID STUDY

1989

Dept. of Foreign Affairs
Min. des Affaires étrangères

OCT 29 2001

Return to Departmental Library
Retourner à la bibliothèque du

PREPARED FOR:

DEPARTMENT OF EXTERNAL AFFAIRS

PREPARED BY:

THOMPSON LIGHTSTONE & COMPANY LIMITED

TL # 989

SEPTEMBER, 1989

62444783

TABLE OF CONTENTS
 TL#989 OMNITEL APARTHEID STUDY

PAGE C1

Table	Page	Title	Base
1	1	Q1: FAMILIARITY WITH WHAT CANADIAN GOVERNMENT HAS DONE IN RESPONSE TO THE SITUATION IN SOUTH AFRICA	BASE: TOTAL
2	3	Q2: ACTION(S) TAKEN BY CANADA IN RESPONSE TO THE SITUATION IN SOUTH AFRICA	BASE: TOTAL
3	5	Q3: DEGREE OF ACTION TAKEN BY CANADA COMPARED TO THE ACTIONS TAKEN BY OTHER COUNTRIES	BASE: TOTAL
4	7	Q4: STATEMENT THAT BEST REFLECTS RESPONDENT'S POINT OF VIEW	BASE: TOTAL
5	9	Q5: STATEMENT THAT BEST REFLECTS RESPONDENT'S POINT OF VIEW	BASE: TOTAL
6	11	Q6: LEVEL OF AGREEMENT WITH THE FOLLOWING STATEMENTS WITH REGARDS TO SOUTH AFRICA AND APARTHEID	BASE: TOTAL
7	21	SEX	BASE: TOTAL
8	23	AGE	BASE: TOTAL
9	25	REGION	BASE: TOTAL
10	27	DIALLING CENTRE	BASE: TOTAL
11	31	COMMUNITY SIZE	BASE: TOTAL
12	33	EDUCATION	BASE: TOTAL
13	35	TOTAL NUMBER OF PEOPLE IN HOUSEHOLD	BASE: TOTAL
14	37	NUMBER OF PEOPLE IN HOUSEHOLD UNDER 10 YEARS OF AGE	BASE: TOTAL
15	39	NUMBER OF PEOPLE IN HOUSEHOLD BETWEEN 10 AND 17 YEARS OF AGE	BASE: TOTAL
16	41	OCCUPATION	BASE: TOTAL
17	43	LANGUAGE	BASE: TOTAL

TABLE OF CONTENTS
TL#987 DMNTEL APARTHEID STUDY

PAGE C2

Table Page

Title

Base

18 45

FAMILY INCOME

BASE: TOTAL

Q1: FAMILIARITY WITH WHAT CANADIAN GOVERNMENT HAS DONE IN RESPONSE TO THE SITUATION IN SOUTH AFRICA

BASE: TOTAL

	SEX		AGE			REGION						COMMUNITY SIZE				EDUCATION				
	MALE	FEMALE	18-29 YEARS	30-49 YEARS	50 YRS AND OVER	ATLANTIC	QUEBEC	ONTARIO	MAN/ SASK	ALBERTA	B.C.	OVER 5000	1000- 5000	100- UNDER 1000	UNDER 100	PUBLIC SCHOOL	HIGH SCHOOL	UNIV/ COLLEG	OTHER	
TOTAL (n/w) (wt.)	1050 1038 100%	501 492 100%	549 545 100%	325 345 100%	472 387 100%	253 306 100%	135 100 100%	261 277 100%	247 351 100%	147 95 100%	127 90 100%	133 125 100%	375 435 100%	163 172 100%	178 156 100%	334 275 100%	91 101 100%	537 508 100%	386 395 100%	36 34 100%
Very Familiar-----(X4)	70 7%	44 9%	26 5%	12 3%	33 9%	26 8%	6 6%	12 4%	32 9%	2 3%	2 2%	17 13%	33 8%	14 8%	10 6%	14 5%	0 -	22 4%	40 10%	8 23%
Somewhat Familiar-----(X3)	395 38%	206 42%	190 35%	120 35%	157 40%	119 39%	41 41%	71 26%	143 41%	42 44%	39 43%	60 48%	188 43%	64 37%	55 35%	89 32%	31 31%	170 33%	184 47%	10 30%
Not very Familiar-----(X2)	343 33%	143 29%	200 37%	127 37%	126 32%	90 29%	35 35%	121 44%	100 28%	26 27%	28 31%	34 27%	132 30%	59 34%	50 32%	103 37%	37 37%	177 35%	120 30%	9 27%
Not at all Familiar-----(X1)	228 22%	99 20%	129 24%	86 25%	71 18%	71 23%	18 18%	73 26%	76 22%	25 26%	22 24%	15 12%	83 19%	35 20%	42 27%	69 25%	32 32%	138 27%	51 13%	7 20%
REFUSED DO NOT KNOW NOT STATED	0 H	0 -	0 H	0 -	0 H	0 -	0 -	0 -	0 H	0 -	0 -	0 -	0 -	0 -	0 H	0 -	0 H	0 -	0 -	0 -
MEAN	2.30	2.40	2.21	2.17	2.39	2.32	2.34	2.08	2.37	2.24	2.22	2.62	2.39	2.33	2.21	2.17	1.99	2.15	2.54	2.57
STD. DEV.	.89	.91	.86	.84	.88	.92	.84	.83	.92	.87	.83	.86	.88	.89	.91	.86	.79	.87	.84	1.05
STD. ERR.	.027	.041	.037	.047	.041	.058	.072	.051	.059	.072	.074	.075	.045	.070	.068	.047	.083	.038	.043	.176

Q1: FAMILIARITY WITH WHAT CANADIAN GOVERNMENT HAS DONE IN RESPONSE TO THE SITUATION IN SOUTH AFRICA

BASE: TOTAL

	OCCUPATION					LANGUAGE					FAMILY INCOME				HEAD OF HOUSEHOLD	
	TOTAL	PROF/ EXEC	SALES CLERICAL	LABOUR	OTHERS	ENGLISH	FRENCH	ENG AND FRENCH	ENG AND OTHER	OTHER	UNDER \$15K	\$15K UNDER \$25K	\$25K UNDER \$40K	OVER \$40K	YES	NO
TOTAL (n/w) (wt.)	1050 1038 100%	191 178 100%	202 200 100%	260 241 100%	386 407 100%	664 641 100%	265 276 100%	6 7 100%	10 12 100%	102 99 100%	118 115 100%	167 162 100%	272 269 100%	274 266 100%	878 850 100%	172 188 100%
Very Familiar----- (X4)	70 7%	21 12%	12 6%	11 5%	24 6%	48 8%	12 4%	1 8%	0 4%	8 8%	4 3%	7 4%	15 6%	27 10%	62 7%	8 4%
Somewhat Familiar----- (X3)	395 38%	75 42%	72 36%	81 33%	162 40%	275 43%	74 27%	1 20%	5 44%	40 40%	28 25%	52 32%	110 41%	114 43%	336 39%	60 32%
Not very Familiar----- (X2)	343 33%	60 34%	73 36%	82 34%	125 31%	193 30%	112 41%	4 63%	3 22%	31 32%	45 40%	52 32%	90 33%	84 31%	265 31%	78 41%
Not at all Familiar----- (X1)	228 22%	22 12%	42 21%	66 28%	96 24%	125 19%	79 28%	1 10%	4 30%	20 20%	37 32%	50 31%	53 20%	42 16%	186 22%	42 22%
REFUSED DO NOT KNOW NOT STATED	0 #	0 -	0 -	0 -	0 #	0 #	0 -	0 -	0 -	0 -	0 -	0 -	0 -	0 #	0 #	0 -
MEAN	2.30	2.54	2.28	2.15	2.28	2.39	2.07	2.26	2.23	2.37	1.99	2.10	2.33	2.47	2.32	2.18
STD. DEV.	.89	.85	.85	.88	.89	.88	.85	.73	.92	.89	.84	.89	.85	.87	.90	.83
STD. ERR.	.027	.062	.061	.055	.045	.034	.052	.299	.292	.088	.077	.069	.052	.053	.030	.063

Q2: ACTION(S) TAKEN BY CANADA IN RESPONSE TO THE SITUATION IN SOUTH AFRICA

BASE: TOTAL

	SEX		AGE			REGION					COMMUNITY SIZE				EDUCATION					
	TOTAL	MALE	FEMALE	18-29 YEARS	30-49 YEARS	50 YRS AND OVER	ATLANTIC	QUEBEC	ONTARIO	MAN/ SASK	ALBERTA	B. C.	OVER 500M	100M- 500M	10M- UNDER 100M	UNDER 10M	PUBLIC SCHOOL	HIGH SCHOOL	UNIV/ COLLEG	OTHER
TOTAL (n/w) (wt.)	1050 1038 100%	501 492 100%	549 545 100%	325 345 100%	472 387 100%	253 306 100%	135 100 100%	261 277 100%	247 351 100%	147 95 100%	127 90 100%	133 125 100%	375 435 100%	163 172 100%	178 156 100%	334 275 100%	91 101 100%	537 508 100%	386 395 100%	36 34 100%
Bans arms sales to South Africa	488 47%	265 54%	222 41%	162 47%	198 51%	128 42%	47 47%	133 48%	161 46%	44 46%	49 54%	54 43%	205 47%	91 53%	73 47%	119 43%	41 40%	236 46%	195 50%	16 46%
Discourages sporting contacts between Canadian and South African athletes and teams	307 30%	168 34%	139 26%	89 26%	132 34%	86 28%	32 32%	50 18%	126 36%	26 28%	26 29%	45 36%	150 34%	58 34%	40 26%	59 22%	25 23%	125 25%	147 37%	9 26%
Gives financial and other assistance to victims of Apartheid in South Africa	499 49%	229 47%	270 50%	179 52%	182 47%	138 45%	45 45%	169 61%	148 42%	44 46%	42 46%	52 42%	201 46%	93 54%	72 46%	133 48%	46 46%	242 48%	188 48%	23 68%
Bans loans to companies in South Africa	364 35%	187 38%	177 32%	112 32%	135 35%	117 38%	35 35%	71 26%	142 40%	34 35%	35 39%	47 38%	148 34%	76 44%	56 36%	84 31%	42 42%	150 30%	158 40%	14 41%
Gives financial aid to South African organizations concerned about Apartheid	520 50%	254 52%	266 49%	194 56%	190 49%	136 44%	57 57%	154 56%	169 48%	44 46%	41 46%	55 44%	221 51%	82 48%	94 61%	122 44%	46 46%	248 49%	206 52%	20 60%
Pays the expenses of South Africans to come to Canada to speak to Canadians about what is going on in South Africa	390 38%	205 42%	185 34%	142 41%	141 37%	107 35%	34 34%	101 37%	141 40%	37 39%	33 36%	44 35%	163 37%	63 37%	54 34%	111 40%	36 36%	189 37%	152 39%	13 37%
Helps pay for the education of black South Africans in South Africa and in Canada	428 41%	212 43%	216 40%	150 44%	147 38%	132 43%	44 44%	130 47%	141 40%	33 35%	34 38%	46 37%	175 40%	68 40%	63 41%	122 44%	31 31%	218 43%	161 41%	19 55%
REFUSED DO NOT KNOW NOT STATED	140 13%	44 9%	96 18%	45 13%	48 13%	46 15%	15 15%	25 9%	55 16%	11 12%	14 15%	20 16%	61 14%	20 12%	16 10%	43 16%	18 18%	78 15%	43 11%	2 5%

Q2: ACTION(S) TAKEN BY CANADA IN RESPONSE TO THE SITUATION IN SOUTH AFRICA

BASE: TOTAL

	OCCUPATION					LANGUAGE					FAMILY INCOME				HEAD OF HOUSEHOLD	
	TOTAL	PROF/ EXEC	SALES CLER- ICAL	LABOUR	OTHERS	ENGLISH	FRENCH	ENG AND FRENCH	ENG AND OTHER	OTHER	UNDER \$15K	\$15K UNDER \$25K	\$25K UNDER \$40K	OVER \$40K	YES	NO
TOTAL (n/w)	1050	191	202	260	386	664	265	6	10	102	118	167	272	274	878	172
(wt.)	1038	178	200	241	407	641	276	7	12	99	115	162	269	266	850	188
	100%	100%	100%	100%	100%	100%	100%	100%	100%	100%	100%	100%	100%	100%	100%	100%
Bans arms sales to South Africa	488 47%	89 50%	92 46%	133 55%	169 42%	298 46%	132 48%	4 56%	7 58%	46 47%	41 36%	76 47%	128 48%	140 53%	398 47%	89 47%
Discourages sporting contacts between Canadian and South African athletes and teams	307 30%	73 41%	51 26%	60 25%	118 29%	220 34%	53 19%	1 17%	3 24%	30 30%	23 20%	42 26%	70 26%	110 41%	264 31%	42 23%
Gives financial and other assistance to victims of Apartheid in South Africa	499 48%	88 50%	102 51%	113 47%	191 47%	276 43%	171 62%	3 49%	8 63%	40 41%	63 55%	86 53%	120 45%	129 48%	393 46%	106 56%
Bans loans to companies in South Africa	364 35%	78 44%	56 28%	80 33%	144 35%	252 39%	70 26%	2 29%	5 42%	34 35%	33 29%	46 29%	90 34%	112 42%	307 36%	57 30%
Gives financial aid to South African organizations concerned about Apartheid	520 50%	100 56%	97 49%	130 54%	187 46%	308 48%	155 56%	3 40%	8 63%	46 47%	48 42%	86 54%	116 43%	151 57%	411 48%	109 58%
Pays the expenses of South Africans to come to Canada to speak to Canadians about what is going on in South Africa	390 38%	64 36%	73 36%	95 39%	156 38%	243 38%	101 37%	1 8%	6 50%	38 39%	45 39%	72 45%	75 28%	107 40%	311 37%	79 42%
Helps pay for the education of black South Africans in South Africa and in Canada	428 41%	77 43%	86 43%	104 43%	158 39%	257 40%	125 45%	1 20%	10 80%	34 35%	39 34%	80 50%	96 36%	120 45%	351 41%	77 41%
REFUSED DO NOT KNOW NOT STATED	140 13%	19 10%	30 15%	25 10%	65 16%	88 14%	30 11%	2 24%	0	20 20%	19 17%	23 14%	40 15%	19 7%	111 13%	28 15%

Q3: DEGREE OF ACTION TAKEN BY CANADA COMPARED TO THE ACTIONS TAKEN BY OTHER COUNTRIES

BASE: TOTAL

	SEX		AGE			REGION					COMMUNITY SIZE				EDUCATION					
	TOTAL	MALE	FEMALE	18-29 YEARS	30-49 YEARS	50 YRS AND OVER	ATLANTIC	QUEBEC	ONTARIO	MAN/ SASK	ALBERTA	B.C.	OVER 500M	100M- 500M	10M- UNDER 100M	UNDER 10M	PUBLIC SCHOOL	HIGH SCHOOL	UNIV/ COLLEG	OTHER
TOTAL (n/w) (wt.)	1050 1038 100%	501 492 100%	549 545 100%	325 345 100%	472 387 100%	253 306 100%	135 100 100%	261 277 100%	247 351 100%	147 95 100%	127 90 100%	133 125 100%	375 435 100%	163 172 100%	178 156 100%	334 275 100%	91 101 100%	537 508 100%	386 395 100%	36 34 100%
Much stronger----- (X5)	29 3%	14 3%	15 3%	11 3%	10 3%	9 3%	1 1%	12 4%	11 3%	1 1%	2 2%	3 3%	11 2%	4 3%	4 3%	10 4%	4 4%	16 3%	10 2%	0 -
Somewhat stronger----- (X4)	134 13%	69 14%	65 12%	44 13%	57 15%	33 11%	13 13%	42 15%	41 12%	9 10%	14 16%	16 13%	63 15%	23 13%	17 11%	32 11%	11 11%	54 11%	64 16%	6 18%
About as strong----- (X3)	343 33%	163 33%	180 33%	132 38%	127 33%	84 28%	36 36%	96 35%	120 34%	39 41%	24 27%	28 23%	145 33%	58 34%	47 30%	93 34%	21 21%	167 33%	145 37%	10 30%
Somewhat milder----- (X2)	286 28%	144 29%	141 26%	96 28%	100 26%	89 29%	24 24%	66 24%	97 28%	22 23%	24 27%	52 42%	120 28%	48 28%	44 29%	73 27%	28 27%	139 27%	111 28%	8 24%
Much milder----- (X1)	103 10%	62 13%	41 7%	31 9%	29 8%	43 14%	10 10%	18 6%	40 11%	14 14%	9 10%	13 10%	42 10%	16 9%	23 15%	22 8%	9 9%	54 11%	34 9%	7 19%
REFUSED DO NOT KNOW NOT STATED	141 14%	39 8%	102 19%	30 9%	63 16%	48 16%	17 17%	43 15%	42 12%	11 11%	17 19%	13 10%	53 12%	23 13%	20 13%	46 17%	28 28%	78 15%	32 8%	3 9%
MEAN	2.67	2.62	2.71	2.70	2.75	2.52	2.63	2.85	2.63	2.54	2.66	2.51	2.69	2.68	2.51	2.71	2.64	2.62	2.74	2.51
STU. DEV.	.97	1.00	.94	.94	.95	1.02	.90	.97	.98	.92	1.01	.96	.97	.95	1.01	.96	1.05	.98	.94	1.03
STU. ERR.	.032	.047	.045	.055	.048	.070	.085	.066	.067	.081	.099	.088	.054	.080	.081	.058	.131	.046	.050	.162

Q3: DEGREE OF ACTION TAKEN BY CANADA COMPARED TO THE ACTIONS TAKEN BY OTHER COUNTRIES

BASE: TOTAL

	OCCUPATION					LANGUAGE					FAMILY INCOME				HEAD OF HOUSEHOLD	
	TOTAL	PROF/ EXEC	SALES CLER- ICAL	LABOUR	OTHERS	ENGLISH	FRENCH	ENG AND FRENCH	ENG AND OTHER	OTHER	UNDER \$15K	\$15K UNDER \$25K	\$25K UNDER \$40K	OVER \$40K	YES	NO
TOTAL (n/w)	1050	191	202	260	386	664	265	6	10	102	118	167	272	274	878	172
(wt.)	1038	178	200	241	407	641	276	7	12	99	115	162	269	266	850	188
	100%	100%	103%	100%	100%	100%	100%	100%	100%	100%	100%	100%	100%	100%	100%	100%
Much stronger----- (X5)	29 3%	5 3%	6 3%	5 2%	12 3%	15 2%	13 5%	0	0	1 1%	2 1%	8 5%	2 1%	12 5%	24 3%	5 3%
Somewhat stronger----- (X4)	134 13%	33 19%	23 12%	31 13%	44 11%	79 12%	38 14%	1 10%	2 13%	15 15%	8 7%	22 14%	37 14%	35 13%	105 12%	30 16%
About as strong----- (X3)	343 33%	59 33%	69 34%	75 31%	140 35%	202 31%	99 36%	6 90%	3 28%	32 32%	43 38%	53 33%	87 32%	92 35%	266 31%	78 41%
Somewhat milder----- (X2)	286 28%	41 23%	57 29%	70 29%	114 28%	192 30%	64 23%	0	5 38%	25 26%	30 26%	36 23%	89 33%	77 29%	243 29%	43 23%
Much milder----- (X1)	103 10%	15 9%	22 11%	31 13%	33 8%	76 12%	18 6%	0	0	8 8%	7 6%	17 11%	24 9%	21 8%	91 11%	13 7%
REFUSED DO NOT KNOW NOT STATED	141 14%	24 14%	24 12%	30 13%	62 15%	77 12%	44 16%	0	3 21%	18 18%	25 22%	24 15%	29 11%	29 11%	121 14%	20 11%
MEAN	2.67	2.81	2.63	2.57	2.67	2.58	2.85	3.10	2.68	2.69	2.64	2.76	2.60	2.75	2.63	2.83
STD. DEV.	.97	.99	.98	.98	.94	.98	.98	.30	.74	.91	.83	1.05	.90	.99	.98	.91
STD. ERR.	.032	.077	.074	.065	.052	.041	.066	.121	.261	.099	.086	.089	.058	.063	.036	.073

Q4: STATEMENT THAT BEST REFLECTS RESPONDENT'S POINT OF VIEW

BASE: TOTAL

	SEX		AGE			REGION						COMMUNITY SIZE				EDUCATION				
	TOTAL	MALE	FEMALE	18-29 YEARS	30-49 YEARS	50 YRS AND OVER	ATLANTIC	QUEBEC	ONTARIO	MAN/ SASK	ALBERTA	B.C.	OVER 500M	100M- 500M	10M- UNDER 100M	UNDER 10M	PUBLIC SCHOOL	HIGH SCHOOL	UNIV/ COLLEG	OTHER
TOTAL (n/w)	1050	501	549	325	472	253	135	261	247	147	127	133	375	163	178	334	91	537	386	36
(wt.)	1038	492	545	345	387	306	100	277	351	95	90	125	435	172	156	275	101	508	395	34
	100%	100%	100%	100%	100%	100%	100%	100%	100%	100%	100%	100%	100%	100%	100%	100%	100%	100%	100%	100%
Canada should have trade restrictions against South Africa in order to put pressure on the South African government to abandon the system of Apartheid	549 53%	278 57%	270 50%	199 58%	202 52%	148 48%	56 56%	162 59%	180 51%	44 46%	45 50%	62 50%	222 51%	98 57%	85 55%	143 52%	49 49%	249 49%	233 59%	17 51%
Canada should not have trade restrictions against South Africa because restrictions hurt the blacks more than the South African government	394 38%	185 38%	209 38%	132 38%	135 35%	127 41%	36 36%	100 36%	135 38%	41 44%	35 39%	47 38%	171 39%	57 33%	63 40%	104 38%	33 33%	209 41%	136 34%	16 45%
REFUSED DO NOT KNOW NOT STATED	95 9%	29 6%	66 12%	14 4%	49 13%	32 10%	8 8%	15 5%	37 10%	10 10%	10 11%	16 13%	41 10%	17 10%	8 5%	29 10%	18 18%	50 10%	26 7%	1 3%

Q4: STATEMENT THAT BEST REFLECTS RESPONDENT'S POINT OF VIEW

BASE: TOTAL

	OCCUPATION					LANGUAGE					FAMILY INCOME				HEAD OF HOUSEHOLD	
	TOTAL	PROF/ EXEC	SALES CLER- ICAL	LABOUR	OTHERS	ENGLISH	FRENCH	ENG AND FRENCH	ENG AND OTHER	OTHER	UNDER \$15K	\$15K UNDER \$25K	\$25K UNDER \$40K	OVER \$40K	YES	NO
TOTAL (n/b)	1050	191	202	260	386	664	265	6	10	102	118	167	272	274	878	172
(wt.)	1038	178	200	241	407	641	276	7	12	99	115	162	269	266	850	188
	100%	100%	100%	100%	100%	100%	100%	100%	100%	100%	100%	100%	100%	100%	100%	100%
Canada should have trade restrictions against South Africa in order to put pressure on the South African government to abandon the system of Apartheid	548 53%	117 66%	112 56%	123 51%	192 47%	336 52%	164 59%	2 37%	3 28%	41 42%	53 46%	81 50%	147 55%	156 59%	443 52%	105 56%
Canada should not have trade restrictions against South Africa because restrictions hurt the blacks more than the South African government	394 38%	43 24%	80 40%	93 39%	172 42%	243 38%	97 35%	4 63%	6 51%	43 44%	45 39%	65 40%	108 40%	94 35%	323 38%	71 38%
REFUSED DO NOT KNOW NOT STATED	95 9%	18 10%	8 4%	25 10%	43 10%	63 10%	15 6%	0 -	3 21%	14 15%	17 15%	15 9%	14 5%	16 6%	84 10%	11 6%

Q5: STATEMENT THAT BEST REFLECTS RESPONDENT'S POINT OF VIEW

BASE: TOTAL

	SEX		AGE			REGION			COMMUNITY SIZE				EDUCATION							
	MALE	FEMALE	18-29 YEARS	30-49 YEARS	50 YRS AND OVER	ATLANTIC	QUEBEC	ONTARIO	MAN/SASK	ALBERTA	B.C.	OVER 500M	100M-500M	10M-100M	UNDER 10M	PUBLIC SCHOOL	HIGH SCHOOL	UNIV/ COLLEG	OTHER	
TOTAL (n/w)	1050	501	549	325	472	253	135	261	247	147	127	133	375	163	178	334	91	537	386	36
(wt.)	1038	492	545	345	387	306	100	277	351	95	90	125	435	172	156	275	101	508	395	34
	100%	100%	100%	100%	100%	100%	100%	100%	100%	100%	100%	100%	100%	100%	100%	100%	100%	100%	100%	100%
Canada should continue its ban on Canadian athletes competing with South African athletes in order to put pressure on the South African Government to abandon the system of Apartheid	203	117	87	72	74	57	18	44	75	19	18	28	86	39	33	45	27	82	89	5
	20%	24%	16%	21%	19%	19%	18%	16%	21%	20%	20%	23%	20%	23%	21%	16%	27%	16%	23%	15%
Canada should lift its ban on Canadian athletes competing with South African athletes because politics should be left out of sports	772	357	416	262	285	226	75	220	253	70	63	91	319	124	114	215	60	400	284	28
	74%	72%	76%	76%	74%	74%	75%	80%	72%	74%	70%	73%	73%	72%	73%	78%	60%	79%	72%	80%
REFUSED	62	19	43	11	28	23	8	12	22	5	9	6	29	8	9	16	14	25	21	2
DO NOT KNOW	6%	4%	8%	3%	7%	7%	8%	4%	6%	6%	10%	5%	7%	5%	6%	6%	14%	5%	5%	5%
NOT STATED																				

Q5: STATEMENT THAT BEST REFLECTS RESPONDENT'S POINT OF VIEW

BASE: TOTAL

	OCCUPATION					LANGUAGE					FAMILY INCOME				HEAD OF HOUSEHOLD	
	TOTAL	PROF/ EXEC	SALES CLER- ICAL	LABOUR	OTHERS	ENGLISH	FRENCH	ENG AND FRENCH	ENG AND OTHER	OTHER	UNDER \$15K	\$15K UNDER \$25K	\$25K UNDER \$40K	OVER \$40K	YES	NO
TOTAL (n/w)	1050	191	202	260	386	664	265	6	10	102	118	167	272	274	878	172
(wt.)	1038	178	200	241	407	641	276	7	12	99	115	162	269	266	850	188
	100%	100%	100%	100%	100%	100%	100%	100%	100%	100%	100%	100%	100%	100%	100%	100%
Canada should continue its ban on Canadian athletes competing with South African athletes in order to put pressure on the South African Government to abandon the system of Apartheid	203 20%	48 27%	42 21%	46 19%	66 16%	133 21%	45 16%	1 10%	2 20%	21 21%	19 17%	25 16%	58 22%	57 21%	166 20%	37 20%
Canada should lift its ban on Canadian athletes competing with South African athletes because politics should be left out of sports	772 74%	116 65%	153 76%	186 77%	310 76%	466 73%	221 80%	6 90%	10 80%	69 70%	84 74%	127 79%	204 76%	201 75%	624 73%	148 79%
REFUSED DO NOT KNOW NOT STATED	62 6%	14 8%	6 3%	10 4%	31 8%	42 7%	11 4%	0 -	0 -	9 9%	11 10%	9 6%	7 2%	8 3%	59 7%	3 1%

Q6: LEVEL OF AGREEMENT WITH THE FOLLOWING STATEMENTS WITH REGARDS TO SOUTH AFRICA AND APARTHEID

BASE: TOTAL

	SEX		AGE			REGION						COMMUNITY SIZE				EDUCATION				
	TOTAL	MALE	FEMALE	18-29 YEARS	30-49 YEARS	50 YRS AND OVER	ATLANTIC	QUEBEC	ONTARIO	MAN/ SASK	ALBERTA	B.C.	OVER 500M	100M- 500M	10M- UNDER 100M	UNDER 10M	PUBLIC SCHOOL	HIGH SCHOOL	UNIV/ COLLEG	OTHER
TOTAL (n/o) (wt.)	1050 1038 100%	501 492 100%	549 545 100%	325 345 100%	472 387 100%	253 306 100%	135 100 100%	261 277 100%	247 351 100%	147 95 100%	127 90 100%	133 125 100%	375 435 100%	163 172 100%	178 156 100%	334 275 100%	91 101 100%	537 508 100%	386 395 100%	36 34 100%
CANADA SHOULD GIVE FINANCIAL HELP TO VICTIMS OF APARTHEID IN SOUTH AFRICA																				
Strongly agree----- (X5)	276 27%	136 28%	140 26%	100 29%	108 28%	68 22%	23 23%	95 34%	95 27%	17 18%	18 20%	28 22%	125 29%	43 25%	44 28%	65 23%	16 16%	133 26%	117 30%	9 27%
Agree somewhat----- (X4)	322 31%	155 31%	167 31%	138 40%	113 29%	72 23%	40 40%	85 31%	94 27%	38 40%	32 35%	35 28%	130 30%	53 31%	48 31%	92 33%	35 35%	156 31%	120 30%	12 35%
Neither agree nor disagree----- (X3)	119 11%	42 9%	77 14%	32 9%	48 12%	39 13%	8 8%	19 7%	54 15%	13 13%	12 13%	15 12%	39 9%	27 16%	17 11%	36 13%	11 11%	69 14%	37 9%	1 4%
Somewhat disagree----- (X2)	131 13%	61 12%	71 13%	35 10%	56 15%	40 13%	15 15%	30 11%	31 9%	15 16%	15 17%	25 20%	55 13%	24 14%	16 10%	36 13%	10 10%	63 12%	54 14%	4 12%
Strongly disagree----- (X1)	133 13%	81 16%	52 10%	32 9%	37 10%	64 21%	10 10%	33 12%	54 16%	12 12%	7 7%	18 14%	54 12%	21 12%	25 16%	33 12%	17 17%	60 12%	50 13%	6 18%
REFUSED DO NOT KNOW NOT STATED	55 5%	18 4%	38 7%	8 2%	24 6%	24 8%	4 4%	16 6%	23 7%	1 1%	6 7%	5 4%	32 7%	5 3%	5 4%	14 5%	11 11%	28 5%	16 4%	1 3%
MEAN	3.49	3.43	3.54	3.71	3.55	3.14	3.54	3.69	3.44	3.35	3.46	3.25	3.54	3.43	3.46	3.45	3.28	3.50	3.53	3.41
STD. DEV.	1.38	1.45	1.30	1.26	1.33	1.50	1.29	1.39	1.42	1.29	1.23	1.40	1.39	1.34	1.43	1.33	1.38	1.35	1.40	1.49
STD. ERR.	.044	.066	.058	.071	.063	.098	.114	.088	.093	.107	.113	.125	.075	.107	.110	.075	.152	.060	.072	.255
THE BEST WAY TO SPEED UP THE END OF APARTHEID IS TO CUT OFF ALL TRADE WITH SOUTH AFRICA																				
Strongly agree----- (X5)	174 17%	103 21%	71 13%	45 13%	60 15%	70 23%	18 18%	56 20%	53 15%	17 18%	13 14%	18 15%	71 16%	34 20%	27 17%	42 15%	19 19%	82 16%	67 17%	7 20%
Agree somewhat----- (X4)	182 18%	92 19%	90 16%	66 19%	79 21%	37 12%	22 22%	48 17%	57 16%	20 21%	17 19%	18 15%	62 14%	45 26%	27 17%	48 17%	16 16%	79 15%	82 21%	5 16%
Neither agree nor disagree----- (X3)	159 15%	41 8%	118 22%	53 15%	58 15%	48 16%	10 10%	31 11%	83 24%	15 16%	8 8%	12 10%	62 14%	32 19%	28 18%	38 14%	14 14%	85 17%	58 15%	4 10%
Somewhat disagree----- (X2)	204 20%	86 17%	118 22%	83 24%	71 18%	50 16%	19 19%	46 17%	65 18%	24 26%	28 31%	22 18%	86 20%	22 13%	22 14%	75 27%	24 23%	114 22%	61 15%	6 17%
Strongly disagree----- (X1)	259 25%	157 32%	103 19%	92 27%	91 23%	76 25%	25 25%	76 27%	77 22%	18 19%	18 19%	46 37%	119 27%	35 21%	47 30%	58 21%	16 16%	117 23%	115 29%	11 33%
REFUSED DO NOT KNOW NOT STATED	58 6%	14 3%	45 8%	6 2%	27 7%	25 8%	6 6%	20 7%	17 5%	1 1%	7 8%	8 6%	35 8%	4 2%	6 4%	14 5%	12 12%	33 6%	12 3%	1 3%
MEAN	2.80	2.79	2.82	2.67	2.85	2.91	2.89	2.85	2.83	2.93	2.75	2.49	2.70	3.13	2.77	2.77	2.96	2.78	2.81	2.73
STD. DEV.	1.44	1.58	1.33	1.40	1.44	1.54	1.50	1.55	1.37	1.39	1.39	1.51	1.48	1.43	1.49	1.40	1.43	1.42	1.50	1.57
STD. ERR.	.046	.072	.059	.078	.069	.101	.133	.099	.090	.116	.128	.136	.080	.113	.114	.079	.158	.064	.077	.269

Q6: LEVEL OF AGREEMENT WITH THE FOLLOWING STATEMENTS WITH REGARDS TO SOUTH AFRICA AND APARTHEID

BASE: TOTAL

	SEX		AGE			REGION						COMMUNITY SIZE				EDUCATION				
	TOTAL	MALE	FEMALE	18-29 YEARS	30-49 YEARS	50 YRS AND OVER	ATLANTIC	QUEBEC	ONTARIO	MAN/ SASK	ALBERTA	B.C.	OVER 500M	100M- 500M	10M- UNDER 100M	UNDER 10M	PUBLIC SCHOOL	HIGH SCHOOL	UNIV/ COLLEG	OTHER
TOTAL (n/w) (wt.)	1050 1038 100%	501 492 100%	549 545 100%	325 345 100%	472 387 100%	253 306 100%	135 100 100%	261 277 100%	247 351 100%	147 95 100%	127 90 100%	133 125 100%	375 435 100%	163 172 100%	178 156 100%	334 275 100%	91 101 100%	537 508 100%	386 395 100%	36 34 100%
THE SOUTH AFRICAN GOVERNMENT IS PUTTING AN END TO THE SYSTEM OF APARTHEID																				
Strongly agree----- (X5)	53 5%	34 7%	20 4%	12 4%	18 5%	22 7%	3 3%	34 12%	8 2%	0 0	5 5%	3 2%	20 5%	10 6%	8 5%	15 5%	7 7%	23 5%	18 5%	5 15%
Agree somewhat----- (X4)	148 14%	80 16%	68 12%	45 13%	56 14%	48 16%	18 18%	43 15%	43 12%	12 13%	11 12%	20 16%	67 15%	24 14%	18 12%	39 14%	10 10%	69 14%	63 16%	6 17%
Neither agree nor disagree----- (X3)	173 17%	81 16%	92 17%	50 15%	60 16%	63 20%	10 10%	42 15%	75 21%	21 22%	9 10%	16 13%	64 15%	28 17%	33 21%	48 18%	29 29%	88 17%	54 14%	2 5%
Somewhat disagree----- (X2)	187 18%	85 17%	102 19%	74 22%	61 16%	51 17%	20 20%	40 14%	46 13%	20 21%	26 29%	34 28%	81 19%	36 21%	16 10%	54 20%	18 18%	87 17%	75 19%	7 20%
Strongly disagree----- (X1)	397 38%	197 40%	200 37%	152 44%	152 39%	93 30%	39 39%	83 30%	161 46%	40 42%	30 33%	45 36%	167 38%	69 40%	69 45%	92 34%	28 28%	192 38%	164 42%	14 40%
REFUSED DO NOT KNOW NOT STATED	80 8%	16 3%	64 12%	11 3%	40 10%	29 9%	10 10%	35 13%	18 5%	2 2%	9 10%	6 5%	36 8%	5 3%	11 7%	28 10%	9 9%	49 10%	20 5%	1 3%
MEAN	2.24	2.30	2.18	2.07	2.22	2.47	2.19	2.60	2.07	2.08	2.20	2.16	2.23	2.24	2.17	2.31	2.46	2.23	2.19	2.45
STD. DEV.	1.29	1.34	1.23	1.21	1.30	1.32	1.28	1.46	1.20	1.10	1.23	1.17	1.29	1.29	1.30	1.27	1.24	1.27	1.29	1.53
STD. ERR.	.041	.061	.055	.069	.063	.088	.116	.097	.079	.092	.115	.106	.069	.103	.102	.073	.136	.058	.067	.262
THE CANADIAN GOVERNMENT SHOULD GIVE MONEY TO HELP SOUTH AFRICANS TO COME TO CANADA TO TELL CANADIANS WHAT IS GOING ON IN SOUTH AFRICA																				
Strongly agree----- (X5)	248 24%	128 26%	121 22%	98 28%	90 23%	60 20%	24 24%	83 30%	81 23%	14 14%	19 21%	27 21%	100 23%	40 23%	42 27%	67 24%	21 21%	108 21%	109 28%	11 32%
Agree somewhat----- (X4)	240 23%	118 24%	122 22%	102 30%	97 25%	41 13%	23 23%	64 23%	77 22%	26 27%	23 25%	28 22%	107 25%	38 22%	30 20%	64 23%	16 16%	119 23%	99 25%	5 16%
Neither agree nor disagree----- (X3)	125 12%	47 10%	78 14%	40 12%	38 10%	48 16%	12 12%	24 9%	55 16%	15 16%	8 9%	11 9%	50 11%	26 15%	19 12%	31 11%	17 17%	68 13%	35 9%	5 16%
Somewhat disagree----- (X2)	175 17%	88 18%	87 16%	51 15%	66 17%	57 19%	23 23%	34 12%	62 18%	22 23%	11 12%	22 18%	63 15%	34 20%	33 21%	45 16%	19 18%	84 17%	66 17%	5 16%
Strongly disagree----- (X1)	200 19%	101 20%	99 18%	48 14%	70 18%	82 27%	14 14%	55 20%	60 17%	17 18%	23 25%	32 25%	87 20%	31 18%	27 17%	53 20%	21 21%	100 20%	73 19%	6 17%
REFUSED DO NOT KNOW NOT STATED	49 5%	11 2%	39 7%	5 1%	26 7%	18 6%	4 4%	17 6%	15 4%	2 2%	7 8%	6 5%	28 7%	3 1%	5 3%	13 5%	7 7%	29 6%	12 3%	1 3%
MEAN	3.16	3.17	3.15	3.44	3.19	2.79	3.22	3.33	3.17	2.97	3.05	2.96	3.17	3.13	3.17	3.17	2.96	3.11	3.27	3.30
STD. DEV.	1.49	1.51	1.46	1.41	1.48	1.51	1.42	1.55	1.44	1.35	1.55	1.54	1.49	1.44	1.49	1.50	1.47	1.46	1.50	1.51
STD. ERR.	.047	.069	.064	.079	.070	.098	.124	.099	.094	.112	.143	.138	.080	.114	.114	.084	.160	.065	.078	.258

Q6: LEVEL OF AGREEMENT WITH THE FOLLOWING STATEMENTS WITH REGARDS TO SOUTH AFRICA AND APARTHEID

BASE: TOTAL

	TOTAL	SEX		AGE			REGION					COMMUNITY SIZE				EDUCATION				
		MALE	FEMALE	18-29 YEARS	30-49 YEARS	50 YRS AND OVER	ATLANTIC	QUEBEC	ONTARIO	MAN/ SASK	ALBERTA	B.C.	OVER 500M	100M- 500M	10M- UNDER 100M	UNDER 10M	PUBLIC SCHOOL	HIGH SCHOOL	UNIV/ COLLEG	OTHER
TOTAL (n/w)	1050	501	549	325	472	253	135	261	247	147	127	133	375	163	178	334	91	537	386	34
(wt.)	1038	492	545	345	387	304	100	277	351	95	90	125	435	172	156	275	101	508	395	34
	100%	100%	100%	100%	100%	100%	100%	100%	100%	100%	100%	100%	100%	100%	100%	100%	100%	100%	100%	100%
CANADA SHOULD PUT MORE PRESSURE ON SOUTH AFRICA TO END THE SYSTEM OF APARTHEID																				
Strongly agree----- (X5)	517	255	263	190	195	133	50	139	178	49	41	61	220	89	78	130	42	244	213	18
	50%	52%	48%	55%	50%	43%	50%	50%	51%	52%	45%	49%	51%	52%	50%	47%	42%	48%	54%	54%
Agree somewhat----- (X4)	229	117	113	88	84	58	31	61	66	22	28	22	84	36	41	69	26	107	89	8
	22%	24%	21%	25%	22%	19%	31%	22%	19%	23%	31%	18%	19%	21%	26%	25%	25%	21%	23%	24%
Neither agree nor disagree----- (X3)	96	35	61	26	36	35	4	26	40	12	5	9	35	21	13	26	11	63	19	2
	9%	7%	11%	8%	9%	11%	4%	9%	11%	13%	6%	7%	8%	12%	9%	10%	11%	12%	5%	7%
Somewhat disagree----- (X2)	74	37	37	24	30	20	7	16	24	7	7	13	32	11	7	24	7	40	25	2
	7%	7%	7%	7%	8%	7%	7%	6%	7%	7%	7%	11%	7%	7%	5%	9%	7%	8%	6%	5%
Strongly disagree----- (X1)	67	33	34	9	19	39	4	19	25	4	2	13	33	10	11	13	7	25	33	3
	6%	7%	6%	3%	5%	13%	4%	7%	7%	4%	3%	10%	8%	6%	7%	5%	7%	5%	8%	7%
REFUSED DO NOT KNOW NOT STATED	54	15	38	8	24	22	4	17	18	1	7	7	31	4	5	13	8	29	15	1
	5%	3%	7%	2%	6%	7%	4%	6%	5%	1%	8%	6%	7%	2%	4%	5%	8%	6%	4%	3%
MEAN	4.07	4.09	4.05	4.26	4.12	3.80	4.21	4.10	4.04	4.10	4.18	3.89	4.05	4.09	4.12	4.07	3.96	4.05	4.12	4.15
STD. DEV.	1.24	1.24	1.24	1.05	1.19	1.43	1.08	1.24	1.27	1.16	1.05	1.41	1.30	1.21	1.20	1.18	1.24	1.20	1.28	1.23
STD. ERR.	.039	.056	.055	.059	.057	.094	.095	.079	.083	.096	.096	.127	.069	.096	.092	.066	.135	.053	.066	.211
CANADA SHOULD END ITS TRADE WITH SOUTH AFRICA EVEN IF THIS MEANS SOME CANADIANS WILL LOSE THEIR JOBS																				
Strongly agree----- (X5)	164	110	54	37	72	55	16	48	43	13	14	30	69	24	31	40	13	72	74	4
	16%	22%	10%	11%	19%	18%	16%	17%	12%	13%	16%	24%	16%	14%	20%	15%	13%	14%	19%	13%
Agree somewhat----- (X4)	168	72	95	67	68	32	20	40	61	18	13	17	64	36	27	41	12	76	73	7
	16%	15%	17%	20%	17%	11%	20%	14%	17%	19%	14%	13%	15%	21%	17%	15%	12%	15%	18%	19%
Neither agree nor disagree----- (X3)	144	47	97	39	54	51	8	20	74	19	10	13	49	32	25	38	14	86	40	4
	14%	9%	18%	11%	14%	17%	8%	7%	21%	20%	11%	10%	11%	19%	16%	14%	14%	17%	10%	11%
Somewhat disagree----- (X2)	236	113	124	103	71	62	28	54	83	27	24	21	98	34	38	65	26	114	92	5
	23%	23%	23%	30%	18%	20%	28%	19%	24%	28%	26%	17%	23%	20%	25%	24%	26%	22%	23%	14%
Strongly disagree----- (X1)	274	138	135	91	99	85	24	100	74	18	22	36	125	42	29	77	24	133	104	14
	26%	28%	25%	26%	25%	28%	24%	36%	21%	19%	24%	29%	29%	25%	19%	28%	24%	26%	26%	40%
REFUSED DO NOT KNOW NOT STATED	51	12	39	7	23	21	4	15	16	1	8	7	29	4	5	14	11	28	12	1
	5%	2%	7%	2%	6%	7%	4%	5%	5%	1%	9%	6%	7%	2%	3%	5%	10%	5%	3%	3%
MEAN	2.71	2.80	2.62	2.58	2.84	2.69	2.75	2.55	2.75	2.80	2.69	2.85	2.64	2.79	2.95	2.62	2.61	2.67	2.80	2.49
STD. DEV.	1.45	1.55	1.34	1.36	1.49	1.48	1.45	1.56	1.33	1.31	1.45	1.60	1.48	1.39	1.43	1.44	1.39	1.41	1.50	1.51
STD. ERR.	.046	.070	.059	.076	.071	.097	.127	.099	.087	.109	.134	.144	.079	.110	.109	.081	.153	.063	.077	.258

06: LEVEL OF AGREEMENT WITH THE FOLLOWING STATEMENTS WITH REGARDS TO SOUTH AFRICA AND APARTHEID

BASE: TOTAL

	SEX		AGE			REGION						COMMUNITY SIZE				EDUCATION				
	TOTAL	MALE	FEMALE	18-29 YEARS	30-49 YEARS	50 YRS AND OVER	ATLANTIC	QUEBEC	ONTARIO	MAN/SASK	ALBERTA	B.C.	OVER 500M	100M-500M	10M-100M	UNDER 10M	PUBLIC SCHOOL	HIGH SCHOOL	UNIV/ COLLEGE	OTHER
TOTAL (n/w) (wt.)	1050 1038 100%	501 492 100%	549 545 100%	325 345 100%	472 387 100%	253 306 100%	135 100 100%	261 277 100%	247 351 100%	147 95 100%	127 90 100%	133 125 100%	375 435 100%	163 172 100%	178 156 100%	334 275 100%	91 101 100%	537 508 100%	386 395 100%	36 34 100%
UNTIL MAJOR TRADING COUNTRIES LIKE THE UNITED STATES AND BRITAIN PUT REAL PRESSURE ON SOUTH AFRICA, THERE WILL BE NO END TO APARTHEID																				
Strongly agree----- (X5)	354 34%	189 38%	165 30%	111 32%	144 37%	98 32%	39 39%	107 39%	116 33%	27 29%	31 34%	34 27%	142 33%	65 38%	68 44%	80 29%	25 25%	175 35%	143 36%	11 31%
Agree somewhat----- (X4)	261 25%	124 26%	135 25%	106 31%	90 23%	64 21%	30 30%	65 23%	84 24%	28 29%	29 32%	26 21%	96 22%	53 31%	34 22%	78 28%	22 22%	125 25%	104 26%	10 29%
Neither agree nor disagree----- (X3)	161 16%	58 12%	103 19%	58 17%	50 13%	53 17%	8 8%	33 12%	71 20%	23 24%	8 9%	18 14%	70 16%	25 15%	25 16%	42 15%	27 27%	70 14%	39 15%	4 13%
Somewhat disagree----- (X2)	113 11%	57 12%	55 10%	37 11%	39 10%	37 12%	11 11%	26 10%	27 8%	12 12%	12 13%	25 20%	54 12%	13 8%	5 3%	40 15%	15 14%	54 11%	39 10%	5 14%
Strongly disagree----- (X1)	85 8%	48 10%	36 7%	24 7%	30 8%	31 10%	6 6%	24 9%	30 9%	5 5%	5 5%	15 12%	40 9%	11 6%	17 11%	17 6%	5 5%	42 8%	36 9%	2 7%
REFUSED DO NOT KNOW NOT STATED	64 6%	14 3%	51 9%	7 2%	34 9%	23 8%	7 7%	21 7%	22 6%	1 1%	6 7%	8 6%	33 8%	5 3%	7 5%	20 7%	7 7%	41 8%	13 3%	2 6%
MEAN	3.71	3.73	3.68	3.72	3.80	3.57	3.90	3.80	3.70	3.66	3.82	3.33	3.61	3.88	3.89	3.64	3.51	3.72	3.73	3.69
STD. DEV.	1.30	1.35	1.24	1.23	1.30	1.36	1.24	1.33	1.28	1.16	1.23	1.41	1.35	1.20	1.32	1.25	1.19	1.31	1.31	1.27
STD. ERR.	.041	.061	.056	.069	.063	.089	.110	.086	.084	.097	.113	.127	.072	.095	.102	.071	.130	.059	.068	.221
COUNTRIES LIKE CANADA ARE NOT GETTING A TRUE PICTURE SOUTH AFRICA BECAUSE THE SOUTH AFRICAN GOVERNMENT WON'T LET REPORTERS SEE WHAT IS GOING ON																				
Strongly agree----- (X5)	457 44%	223 45%	234 43%	161 47%	163 42%	134 44%	47 47%	124 45%	151 43%	44 47%	35 39%	56 45%	168 39%	89 52%	76 49%	123 45%	37 37%	230 45%	173 44%	18 51%
Agree somewhat----- (X4)	249 24%	112 23%	136 25%	97 28%	93 24%	59 19%	33 33%	53 19%	85 24%	29 31%	24 27%	25 20%	113 26%	34 20%	40 26%	61 22%	24 24%	118 23%	100 25%	7 20%
Neither agree nor disagree----- (X3)	117 11%	45 9%	71 13%	33 10%	44 11%	40 13%	5 5%	31 11%	54 15%	11 12%	5 6%	10 8%	46 11%	20 11%	16 11%	35 13%	13 13%	58 11%	45 11%	1 2%
Somewhat disagree----- (X2)	91 9%	55 11%	35 7%	27 8%	36 9%	28 9%	8 8%	24 9%	24 7%	6 6%	12 14%	17 13%	49 11%	13 8%	9 6%	19 7%	7 7%	42 8%	36 9%	6 16%
Strongly disagree----- (X1)	66 6%	41 8%	25 5%	21 6%	25 6%	20 7%	3 3%	24 9%	18 5%	3 3%	5 6%	13 10%	27 6%	13 7%	7 5%	18 7%	8 7%	28 5%	28 7%	2 7%
REFUSED DO NOT KNOW NOT STATED	58 6%	15 3%	43 8%	7 2%	26 7%	25 8%	4 4%	21 8%	20 6%	2 2%	8 9%	4 3%	31 7%	3 2%	6 4%	19 7%	12 12%	32 6%	13 3%	1 3%
MEAN	3.96	3.88	4.03	4.04	3.92	3.92	4.16	3.89	3.99	4.13	3.88	3.78	3.86	4.03	4.13	3.98	3.85	4.01	3.93	3.96
STD. DEV.	1.25	1.34	1.16	1.20	1.26	1.29	1.07	1.35	1.18	1.06	1.28	1.42	1.27	1.28	1.14	1.25	1.28	1.22	1.27	1.37
STD. ERR.	.040	.061	.051	.067	.060	.085	.094	.086	.077	.088	.118	.127	.068	.101	.087	.071	.143	.054	.066	.235

36: LEVEL OF AGREEMENT WITH THE FOLLOWING STATEMENTS WITH REGARDS TO SOUTH AFRICA AND APARTHEID

BASE: TOTAL

	SEX		AGE			REGION						COMMUNITY SIZE				EDUCATION				
	TOTAL	MALE	FEMALE	18-29 YEARS	30-49 YEARS	50 YRS AND OVER	ATLANTIC	QUEBEC	ONTARIO	MAN/ SASK	ALBERTA	B.C.	OVER 500M	100M- 500M	10M- UNDER 100M	UNDER 10M	PUBLIC SCHOOL	HIGH SCHOOL	UNIV/ COLLEG	OTHER
TOTAL (n/w) (wt.)	1050 1039 100%	501 492 100%	549 545 100%	325 345 100%	472 387 100%	253 306 100%	135 100 100%	261 277 100%	247 351 100%	147 95 100%	127 90 100%	133 125 100%	375 435 100%	163 172 100%	178 156 100%	394 275 100%	91 101 100%	537 508 100%	386 395 100%	36 34 100%
CANADA SHOULD GIVE MONEY TO HELP BLACK SOUTH AFRICANS TO GO TO UNIVERSITY IN SOUTH AFRICA AND IN CANADA																				
Strongly agree----- (X5)	218 21%	105 21%	114 21%	74 21%	81 21%	63 21%	23 23%	78 28%	71 20%	11 11%	14 15%	21 17%	88 20%	37 22%	34 22%	59 22%	11 11%	100 20%	100 25%	8 24%
Agree somewhat----- (X4)	274 26%	142 29%	131 24%	111 32%	110 29%	52 17%	29 29%	81 29%	80 23%	26 28%	31 35%	26 21%	122 28%	47 27%	40 26%	64 23%	24 24%	133 26%	114 29%	3 8%
Neither agree nor disagree----- (X3)	135 13%	42 9%	93 17%	41 12%	49 13%	45 15%	9 9%	18 6%	67 19%	16 17%	13 15%	13 10%	53 12%	27 16%	24 15%	31 11%	16 16%	72 14%	40 10%	7 19%
Somewhat disagree----- (X2)	160 15%	85 17%	75 14%	61 18%	53 14%	47 15%	15 15%	35 13%	46 13%	23 24%	10 12%	31 25%	71 16%	22 13%	18 11%	49 18%	14 14%	79 16%	60 15%	7 21%
Strongly disagree----- (X1)	203 20%	107 22%	96 18%	54 16%	68 18%	81 26%	20 20%	50 18%	70 20%	19 20%	14 16%	30 24%	76 18%	34 20%	33 21%	59 22%	26 26%	100 20%	69 17%	8 24%
REFUSED DO NOT KNOW NOT STATED	47 4%	11 2%	36 7%	4 1%	25 6%	18 6%	4 4%	15 5%	17 5%	0 0%	6 7%	4 3%	24 6%	4 2%	7 4%	12 5%	9 9%	25 5%	12 3%	1 3%
MEAN	3.15	3.11	3.18	3.27	3.23	2.89	3.20	3.39	3.11	2.86	3.24	2.82	3.18	3.18	3.17	3.06	2.77	3.11	3.30	2.85
STD. DEV.	1.46	1.49	1.42	1.39	1.43	1.53	1.49	1.50	1.43	1.32	1.34	1.46	1.43	1.44	1.47	1.49	1.41	1.44	1.46	1.51
STD. ERR.	.046	.067	.063	.078	.068	.099	.131	.095	.094	.110	.123	.130	.076	.114	.113	.083	.155	.064	.075	.259

Q6: LEVEL OF AGREEMENT WITH THE FOLLOWING STATEMENTS WITH REGARDS TO SOUTH AFRICA AND APARTHEID

BASE: TOTAL

	OCCUPATION					LANGUAGE					FAMILY INCOME				HEAD OF HOUSEHOLD	
	TOTAL	PROF/ EXEC	SALES CLERICAL	LABOUR	OTHERS	ENGLISH	FRENCH	ENG AND FRENCH	ENG AND OTHER	OTHER	UNDER \$15K	\$15K UNDER \$25K	\$25K UNDER \$40K	OVER \$40K	YES	NO
TOTAL (n/w) (wt.)	1050 1039 100%	191 178 100%	202 209 100%	260 241 100%	386 407 100%	664 641 100%	265 276 100%	6 7 100%	10 12 100%	102 99 100%	118 115 100%	167 162 100%	272 269 100%	274 266 100%	878 850 100%	172 188 100%
CANADA SHOULD GIVE FINANCIAL HELP TO VICTIMS OF APARTHEID IN SOUTH AFRICA																
Strongly agree----- (X5)	276 27%	58 32%	53 27%	65 27%	99 24%	156 24%	89 32%	3 4%	3 2%	24 25%	22 19%	40 25%	79 30%	83 31%	218 26%	59 31%
Agree somewhat----- (X4)	322 31%	60 34%	62 31%	78 32%	120 29%	210 33%	83 30%	0 -	3 2%	24 25%	38 33%	58 36%	88 33%	81 30%	257 30%	65 35%
Neither agree nor disagree----- (X3)	119 11%	17 10%	25 13%	20 8%	56 14%	79 12%	25 9%	2 2%	1 8%	13 13%	17 15%	18 11%	29 11%	29 11%	91 11%	28 15%
Somewhat disagree----- (X2)	131 13%	17 9%	29 14%	35 14%	48 12%	87 14%	33 12%	1 8%	0 -	10 11%	15 13%	20 12%	36 14%	28 10%	117 14%	14 8%
Strongly disagree----- (X1)	133 13%	17 10%	26 13%	30 13%	57 14%	81 13%	29 11%	1 20%	6 47%	15 16%	14 12%	15 10%	30 11%	37 14%	118 14%	15 8%
REFUSED DO NOT KNOW NOT STATED	55 5%	9 5%	4 2%	13 5%	27 7%	28 4%	16 6%	0 -	0 -	11 11%	8 7%	11 7%	7 2%	8 3%	49 6%	6 3%
MEAN	3.49	3.74	3.45	3.50	3.41	3.45	3.66	3.52	2.75	3.36	3.35	3.57	3.58	3.56	3.42	3.76
STD. DEV.	1.38	1.30	1.37	1.39	1.38	1.35	1.36	1.60	1.72	1.44	1.31	1.28	1.35	1.40	1.40	1.22
STD. ERR.	.044	.096	.093	.088	.073	.054	.086	.653	.545	.150	.125	.103	.082	.086	.049	.094
THE BEST WAY TO SPEED UP THE END OF APARTHEID IS TO CUT OFF ALL TRADE WITH SOUTH AFRICA																
Strongly agree----- (X5)	174 17%	37 21%	36 18%	33 14%	66 16%	106 17%	54 20%	1 10%	1 8%	12 12%	18 16%	26 16%	44 17%	52 19%	148 17%	27 14%
Agree somewhat----- (X4)	182 18%	42 24%	38 19%	43 18%	58 14%	115 18%	50 18%	0 -	0 -	17 17%	16 14%	27 17%	48 18%	55 21%	153 18%	29 16%
Neither agree nor disagree----- (X3)	159 15%	25 14%	34 17%	33 14%	64 16%	95 15%	41 15%	0 -	7 58%	16 16%	14 12%	37 23%	38 14%	33 12%	119 14%	41 22%
Somewhat disagree----- (X2)	204 20%	31 18%	35 18%	51 21%	85 21%	140 22%	45 16%	2 31%	1 4%	16 17%	29 26%	31 19%	62 23%	39 15%	168 20%	36 19%
Strongly disagree----- (X1)	259 25%	36 20%	51 25%	64 27%	105 26%	151 23%	71 26%	4 59%	4 30%	30 30%	27 23%	30 18%	65 24%	80 30%	210 25%	49 26%
REFUSED DO NOT KNOW NOT STATED	58 6%	7 4%	5 2%	16 7%	29 7%	34 5%	16 6%	0 -	0 -	8 8%	10 9%	10 7%	11 4%	7 3%	52 6%	6 3%
MEAN	2.80	3.07	2.87	2.69	2.72	2.81	2.89	1.70	2.53	2.61	2.71	2.93	2.78	2.85	2.82	2.72
STD. DEV.	1.46	1.46	1.47	1.43	1.45	1.44	1.51	1.17	1.16	1.43	1.44	1.36	1.44	1.54	1.47	1.40
STD. ERR.	.046	.107	.105	.092	.076	.057	.095	.478	.367	.148	.137	.109	.089	.094	.051	.108

Q6: LEVEL OF AGREEMENT WITH THE FOLLOWING STATEMENTS WITH REGARDS TO SOUTH AFRICA AND APARTHEID

BASE: TOTAL

	TOTAL	OCCUPATION				LANGUAGE					FAMILY INCOME				HEAD OF HOUSEHOLD	
		PROF/ EXEC	SALES CLER- ICAL	LABOUR	OTHERS	ENGLISH	FRENCH	ENG AND FRENCH	ENG AND OTHER	OTHER	UNDER \$15K	\$15K UNDER \$25K	\$25K UNDER \$40K	OVER \$40K	YES	NO
TOTAL (n/w)	1050	191	202	260	386	664	265	6	10	102	118	167	272	274	878	172
(wt.)	1038	178	200	241	407	641	276	7	12	99	115	162	269	266	850	188
	100%	100%	100%	100%	100%	100%	100%	100%	100%	100%	100%	100%	100%	100%	100%	100%
THE SOUTH AFRICAN GOVERNMENT IS PUTTING AN END TO THE SYSTEM OF APARTHEID																
Strongly agree----- (X5)	53 5%	13 7%	10 5%	11 4%	20 5%	17 3%	29 10%	0 -	1 1%	6 6%	4 4%	11 7%	11 4%	13 5%	46 5%	8 4%
Agree somewhat----- (X4)	148 14%	19 11%	21 11%	35 14%	69 17%	90 14%	42 15%	1 20%	4 34%	10 10%	12 11%	26 16%	37 14%	44 16%	128 15%	20 11%
Neither agree nor disagree----- (X3)	173 17%	28 16%	32 16%	35 15%	76 19%	99 15%	45 16%	0 -	3 26%	26 26%	30 26%	25 16%	40 15%	32 12%	137 16%	36 19%
Somewhat disagree----- (X2)	187 18%	36 20%	27 14%	49 20%	74 18%	129 20%	41 15%	0 -	1 12%	15 15%	23 21%	35 22%	48 18%	49 18%	156 18%	31 17%
Strongly disagree----- (X1)	397 38%	72 40%	100 50%	95 39%	126 31%	269 42%	87 31%	4 61%	2 17%	35 35%	30 26%	52 32%	116 43%	115 43%	313 37%	84 46%
REFUSED DO NOT KNOW NOT STATED	80 8%	10 5%	9 4%	17 7%	43 10%	38 6%	33 12%	1 20%	0 -	7 7%	14 12%	12 8%	16 6%	14 5%	70 8%	10 5%
MEAN	2.24	2.20	2.02	2.19	2.41	2.10	2.53	1.73	3.09	2.30	2.37	2.39	2.13	2.17	2.28	2.07
STD. DEV.	1.29	1.30	1.27	1.26	1.28	1.20	1.42	1.29	1.26	1.26	1.16	1.31	1.26	1.30	1.30	1.22
STD. ERR.	.041	.096	.092	.081	.069	.048	.093	.576	.398	.129	.113	.106	.079	.081	.046	.096
THE CANADIAN GOVERNMENT SHOULD GIVE MONEY TO HELP SOUTH AFRICANS TO COME TO CANADA TO TELL CANADIANS WHAT IS GOING ON IN SOUTH AFRICA																
Strongly agree----- (X5)	248 24%	47 26%	52 26%	58 24%	90 22%	149 23%	79 28%	2 37%	0 4%	18 18%	26 23%	33 20%	63 23%	84 32%	197 23%	51 27%
Agree somewhat----- (X4)	240 23%	42 24%	44 22%	66 27%	87 21%	149 23%	65 24%	0 -	4 37%	21 21%	32 28%	50 31%	62 23%	62 23%	191 23%	49 26%
Neither agree nor disagree----- (X3)	125 12%	18 10%	23 12%	27 11%	56 14%	84 13%	27 10%	2 24%	0 -	13 13%	13 11%	20 12%	26 10%	25 10%	101 12%	25 13%
Somewhat disagree----- (X2)	175 17%	29 16%	36 19%	34 14%	72 18%	119 19%	37 14%	1 20%	2 13%	14 15%	14 13%	21 13%	46 17%	44 16%	139 16%	35 19%
Strongly disagree----- (X1)	200 19%	32 18%	41 20%	43 18%	82 20%	113 18%	55 20%	1 20%	6 46%	25 25%	21 19%	29 18%	61 23%	47 18%	177 21%	23 12%
REFUSED DO NOT KNOW NOT STATED	49 5%	10 6%	4 2%	13 5%	20 5%	29 4%	13 5%	0 -	0 -	8 8%	8 7%	8 5%	10 4%	5 2%	44 5%	5 3%
MEAN	3.16	3.26	3.15	3.27	3.08	3.17	3.29	3.14	2.40	2.93	3.26	3.24	3.08	3.35	3.11	3.39
STD. DEV.	1.49	1.50	1.51	1.46	1.48	1.45	1.53	1.56	1.47	1.50	1.46	1.42	1.53	1.51	1.50	1.39
STD. ERR.	.047	.111	.108	.093	.077	.058	.096	.637	.464	.155	.139	.113	.094	.092	.052	.107

Q6: LEVEL OF AGREEMENT WITH THE FOLLOWING STATEMENTS WITH REGARDS TO SOUTH AFRICA AND APARTHEID

BASE: TOTAL

	TOTAL	OCCUPATION				LANGUAGE					FAMILY INCOME				HEAD OF HOUSEHOLD	
		PROF/ EXEC	SALES CLER- ICAL	LABOUR	OTHERS	ENGLISH	FRENCH	ENG AND FRENCH	ENG AND OTHER	OTHER	UNDER \$15K	\$15K UNDER \$25K	\$25K UNDER \$40K	OVER \$40K	YES	NO
TOTAL (n/u)	1050	191	202	260	386	664	265	6	10	102	118	167	272	274	878	172
(wt.)	1038	178	200	241	407	641	276	7	12	99	115	162	266	850	188	
	100%	100%	100%	100%	100%	100%	100%	100%	100%	100%	100%	100%	100%	100%	100%	
CANADA SHOULD PUT MORE PRESSURE ON SOUTH AFRICA TO END THE SYSTEM OF APARTHEID																
Strongly agree----- (X5)	517 50%	107 60%	103 51%	117 49%	186 46%	330 51%	137 50%	4 57%	2 15%	44 45%	46 40%	70 43%	140 52%	166 62%	423 50%	94 50%
Agree somewhat----- (X4)	229 22%	40 23%	45 23%	53 22%	90 22%	146 23%	62 22%	0 -	4 30%	18 18%	32 28%	45 28%	53 20%	47 18%	193 23%	36 19%
Neither agree nor disagree----- (X3)	96 9%	7 4%	23 11%	26 11%	40 10%	50 8%	26 10%	0 -	3 25%	15 16%	19 16%	14 9%	29 11%	12 5%	71 8%	25 14%
Somewhat disagree----- (X2)	74 7%	9 5%	10 5%	23 10%	30 7%	52 8%	16 6%	2 24%	2 13%	3 3%	5 4%	16 10%	21 8%	21 8%	57 7%	17 9%
Strongly disagree----- (X1)	67 6%	7 4%	13 7%	11 5%	33 8%	32 5%	20 7%	0 -	2 17%	12 12%	6 5%	9 6%	19 7%	14 5%	58 7%	9 5%
REFUSED DO NOT KNOW NOT STATED	54 5%	7 4%	5 3%	11 5%	28 7%	31 5%	15 5%	1 20%	0 -	7 7%	8 7%	8 5%	7 2%	7 3%	47 6%	6 3%
MEAN	4.07	4.35	4.10	4.05	3.97	4.13	4.07	4.12	3.14	3.85	4.00	3.98	4.05	4.27	4.08	4.04
STD. DEV.	1.24	1.07	1.21	1.21	1.30	1.19	1.25	1.36	1.30	1.39	1.13	1.22	1.27	1.19	1.24	1.21
STD. ERR.	.039	.078	.086	.077	.069	.047	.079	.610	.411	.142	.107	.097	.078	.073	.043	.094
CANADA SHOULD END ITS TRADE WITH SOUTH AFRICA EVEN IF THIS MEANS SOME CANADIANS WILL LOSE THEIR JOBS																
Strongly agree----- (X5)	164 16%	31 18%	25 12%	44 18%	63 15%	99 15%	50 18%	1 10%	1 11%	13 14%	15 13%	23 14%	48 18%	48 18%	141 17%	23 12%
Agree somewhat----- (X4)	168 16%	36 20%	35 17%	42 17%	54 13%	110 17%	41 15%	0 -	0 4%	16 16%	14 13%	30 18%	43 16%	51 19%	143 17%	24 13%
Neither agree nor disagree----- (X3)	144 14%	23 13%	35 17%	25 10%	58 14%	99 15%	22 8%	0 -	4 30%	18 18%	18 16%	15 9%	36 13%	31 12%	123 15%	21 11%
Somewhat disagree----- (X2)	236 23%	41 23%	41 20%	58 24%	95 23%	154 24%	58 21%	2 31%	4 30%	18 19%	19 17%	45 28%	65 24%	58 22%	176 21%	60 32%
Strongly disagree----- (X1)	274 26%	40 22%	60 30%	57 24%	114 28%	150 23%	91 33%	4 59%	3 25%	26 27%	39 34%	40 25%	69 26%	72 27%	221 26%	54 29%
REFUSED DO NOT KNOW NOT STATED	51 5%	7 4%	5 3%	15 6%	23 6%	30 5%	14 5%	0 -	0 -	7 7%	8 7%	9 6%	8 3%	7 3%	44 5%	7 4%
MEAN	2.71	2.87	2.61	2.81	2.63	2.76	2.62	1.70	2.46	2.69	2.51	2.67	2.75	2.79	2.76	2.46
STD. DEV.	1.45	1.45	1.41	1.48	1.45	1.41	1.54	1.17	1.22	1.41	1.46	1.43	1.46	1.49	1.46	1.37
STD. ERR.	.046	.106	.109	.095	.076	.056	.097	.478	.386	.145	.138	.113	.090	.091	.051	.106

Q6: LEVEL OF AGREEMENT WITH THE FOLLOWING STATEMENTS WITH REGARDS TO SOUTH AFRICA AND APARTHEID

BASE: TOTAL

	OCCUPATION					LANGUAGE					FAMILY INCOME				HEAD OF HOUSEHOLD	
	TOTAL	PROF/ EXEC	SALES CLER- ICAL	LABOUR	OTHERS	ENGLISH	FRENCH	ENG AND FRENCH	ENG AND OTHER	OTHER	UNDER \$15K	\$15K UNDER \$25K	\$25K UNDER \$40K	OVER \$40K	YES	NO
TOTAL (n/w) (wt.)	1050 1038 100%	191 178 100%	202 200 100%	260 241 100%	386 407 100%	664 641 100%	265 276 100%	6 7 100%	10 12 100%	102 99 100%	118 115 100%	167 162 100%	272 269 100%	274 266 100%	878 850 100%	172 188 100%
UNTIL MAJOR TRADING COUNTRIES LIKE THE UNITED STATES AND BRITAIN PUT REAL PRESSURE ON SOUTH AFRICA, THERE WILL BE NO END TO APARTHEID																
Strongly agree-----(X5)	354 34%	72 41%	71 36%	84 35%	125 31%	215 34%	102 37%	1 17%	2 15%	33 33%	26 23%	52 32%	96 36%	114 43%	296 35%	58 31%
Agree somewhat----- (X4)	261 25%	44 25%	57 29%	63 26%	93 23%	175 27%	65 23%	0 -	4 35%	17 17%	19 16%	43 27%	67 25%	61 23%	210 25%	51 27%
Neither agree nor disagree----- (X3)	161 16%	29 16%	30 15%	33 14%	68 17%	94 15%	41 15%	1 20%	3 21%	21 21%	28 25%	21 13%	37 14%	32 12%	112 13%	50 26%
Somewhat disagree----- (X2)	113 11%	11 6%	28 14%	23 9%	49 12%	71 11%	28 10%	2 24%	2 17%	11 11%	19 17%	18 11%	32 12%	34 13%	100 12%	13 7%
Strongly disagree----- (X1)	85 8%	13 7%	8 4%	24 10%	38 9%	50 8%	21 8%	1 20%	0 -	11 11%	13 11%	16 10%	24 9%	17 7%	74 9%	11 6%
REFUSED DO NOT KNOW NOT STATED	64 6%	9 5%	4 2%	15 6%	33 8%	35 6%	20 7%	1 20%	1 12%	7 7%	9 8%	12 7%	12 4%	8 3%	58 7%	6 3%
MEAN	3.71	3.90	3.79	3.71	3.58	3.72	3.78	2.64	3.55	3.55	3.26	3.65	3.69	3.85	3.70	3.73
STD. DEV.	1.30	1.24	1.20	1.33	1.34	1.28	1.30	1.42	.99	1.38	1.33	1.34	1.34	1.29	1.33	1.15
STD. ERR.	.041	.092	.086	.085	.071	.051	.083	.635	.329	.142	.128	.108	.083	.079	.047	.089

COUNTRIES LIKE CANADA ARE NOT GETTING A TRUE PICTURE SOUTH AFRICA BECAUSE THE SOUTH AFRICAN GOVERNMENT WON'T LET REPORTERS SEE WHAT IS GOING ON

Strongly agree----- (X5)	457 44%	73 41%	95 48%	107 44%	178 44%	290 45%	120 43%	2 27%	6 52%	38 38%	50 44%	75 46%	131 49%	109 41%	368 43%	89 47%
Agree somewhat----- (X4)	249 24%	44 25%	48 24%	60 25%	94 23%	166 26%	59 21%	2 29%	0 -	22 22%	29 25%	42 26%	57 21%	74 28%	207 24%	42 22%
Neither agree nor disagree----- (X3)	117 11%	22 12%	17 8%	22 9%	55 13%	64 10%	35 13%	0 -	3 27%	14 14%	9 8%	17 10%	34 13%	25 9%	92 11%	24 13%
Somewhat disagree----- (X2)	91 9%	22 12%	21 10%	22 9%	26 6%	56 9%	23 8%	0 -	1 4%	12 12%	6 5%	6 4%	25 9%	31 12%	79 9%	12 7%
Strongly disagree----- (X1)	66 6%	11 6%	12 6%	17 7%	24 6%	31 5%	24 9%	3 44%	2 17%	5 5%	10 9%	12 7%	10 4%	22 8%	50 6%	15 8%
REFUSED DO NOT KNOW NOT STATED	58 6%	7 4%	7 3%	13 5%	30 7%	33 5%	17 6%	0 -	0 -	8 8%	10 8%	10 6%	13 5%	6 2%	53 6%	5 3%
MEAN	3.96	3.86	4.00	3.95	4.00	4.03	3.88	2.96	3.65	3.85	3.97	4.06	4.06	3.83	3.96	3.97
STD. DEV.	1.25	1.27	1.26	1.28	1.21	1.19	1.32	1.77	1.53	1.24	1.30	1.22	1.18	1.31	1.24	1.28
STD. ERR.	.040	.093	.090	.082	.064	.047	.084	.721	.485	.128	.125	.097	.073	.080	.043	.099

Q6: LEVEL OF AGREEMENT WITH THE FOLLOWING STATEMENTS WITH REGARDS TO SOUTH AFRICA AND APARTHEID

BASE: TOTAL

	OCCUPATION					LANGUAGE					FAMILY INCOME				HEAD OF HOUSEHOLD	
	TOTAL	PROF/ EXEC	SALES CLERICAL	LABOUR	OTHERS	ENGLISH	FRENCH	ENG AND FRENCH	ENG AND OTHER	OTHER	UNDER \$15K	\$15K UNDER \$25K	\$25K UNDER \$40K	OVER \$40K	YES	NO
TOTAL (n/w)	1050	191	202	260	386	664	265	6	10	102	118	167	272	274	878	172
(wt.)	1038	178	209	241	407	641	276	7	12	99	115	162	269	266	850	188
	100%	100%	100%	100%	100%	100%	100%	100%	100%	100%	100%	100%	100%	100%	100%	100%
CANADA SHOULD GIVE MONEY TO HELP BLACK SOUTH AFRICANS TO GO TO UNIVERSITY IN SOUTH AFRICA AND IN CANADA																
Strongly agree (X5)	219 21%	48 27%	48 24%	45 19%	77 19%	124 19%	75 27%	1 20%	1 4%	18 19%	19 16%	29 18%	51 19%	73 27%	174 21%	44 23%
Agree somewhat (X4)	274 26%	47 26%	50 25%	80 33%	91 22%	167 26%	78 28%	1 10%	3 22%	26 26%	31 27%	49 31%	78 29%	67 25%	227 27%	47 25%
Neither agree nor disagree (X3)	135 13%	20 11%	20 10%	24 10%	69 17%	96 15%	22 8%	1 20%	1 11%	14 14%	16 14%	20 13%	32 12%	28 11%	104 12%	30 16%
Somewhat disagree (X2)	160 15%	32 18%	33 17%	37 15%	56 14%	104 16%	37 14%	1 8%	2 16%	14 15%	18 16%	24 15%	53 20%	39 15%	134 16%	26 14%
Strongly disagree (X1)	203 20%	24 14%	43 22%	43 18%	93 23%	124 19%	51 18%	3 43%	6 47%	20 20%	26 22%	29 18%	48 18%	53 20%	165 19%	38 20%
REFUSED DO NOT KNOW NOT STATED	47 4%	7 4%	5 2%	12 5%	21 5%	26 4%	14 5%	0 -	0 -	7 7%	6 5%	10 6%	7 3%	5 2%	43 5%	3 2%
MEAN	3.15	3.36	3.14	3.20	3.01	3.10	3.34	2.55	2.20	3.10	2.99	3.16	3.12	3.26	3.14	3.18
STD. DEV.	1.46	1.42	1.51	1.42	1.46	1.43	1.49	1.57	1.34	1.44	1.44	1.41	1.41	1.51	1.45	1.46
STD. ERR.	.046	.105	.108	.090	.076	.057	.094	.642	.422	.148	.136	.112	.087	.092	.050	.113

SEX:

BASE: TOTAL

	SEX		AGE			REGION						COMMUNITY SIZE				EDUCATION				
	TOTAL	MALE	FEMALE	18-29 YEARS	30-49 YEARS	50 YRS AND OVER	ATLANTIC	QUEBEC	ONTARIO	MAN/ SASK	ALBERTA	B.C.	OVER 500M	100M- 500M	10M- UNDER 100M	UNDER 10M	PUBLIC SCHOOL	HIGH SCHOOL	UNIV/ COLLEG	OTHER
TOTAL (n/w)	1050	501	549	325	472	253	135	261	247	147	127	133	375	163	178	334	91	537	386	36
(wt.)	1038	492	545	345	387	306	100	277	351	95	90	125	435	172	156	275	101	508	395	34
	100%	100%	100%	100%	100%	100%	100%	100%	100%	100%	100%	100%	100%	100%	100%	100%	100%	100%	100%	100%
Male	492	492	0	178	177	137	52	135	153	41	46	65	200	75	80	137	54	218	195	24
	47%	100%	-	52%	46%	45%	52%	49%	44%	43%	51%	52%	46%	44%	52%	50%	54%	43%	49%	71%
Female	545	0	545	167	210	169	48	142	198	54	44	60	235	97	75	138	46	290	200	10
	53%	-	100%	48%	54%	55%	48%	51%	56%	57%	49%	48%	54%	56%	48%	50%	46%	57%	51%	29%

SEX

BASE: TOTAL

	OCCUPATION					LANGUAGE					FAMILY INCOME				HEAD OF HOUSEHOLD	
	TOTAL	PROF/ EXEC	SALES CLER- ICAL	LABOUR	OTHERS	ENGLISH	FRENCH	ENG AND FRENCH	ENG AND OTHER	OTHER	UNDER \$15K	\$15K UNDER \$25K	\$25K UNDER \$40K	OVER \$40K	YES	NO
TOTAL (n/w)	1050	191	202	260	386	664	265	6	10	102	118	167	272	274	878	172
(wt.)	1038	178	200	241	407	641	276	7	12	99	115	162	269	266	850	188
	100%	100%	100%	100%	100%	100%	100%	100%	100%	100%	100%	100%	100%	100%	100%	100%
Male	492	96	71	172	145	294	132	3	7	56	44	68	128	140	409	83
	47%	54%	36%	71%	36%	46%	48%	47%	58%	57%	39%	42%	48%	53%	48%	44%
Female	545	82	129	69	262	347	145	3	5	43	70	94	140	126	441	104
	53%	46%	64%	29%	64%	54%	52%	53%	42%	43%	61%	58%	52%	47%	52%	56%

AGE

BASE: TOTAL

	SEX		AGE			REGION					COMMUNITY SIZE			EDUCATION						
	MALE	FEMALE	18-29 YEARS	30-49 YEARS	50 YRS AND OVER	ATLANTIC	QUEBEC	ONTARIO	MAN/ SASK	ALBERTA	B.C.	OVER 500M	100M- 500M	10M- UNDER 100M	UNDER 10M	PUBLIC SCHOOL	HIGH SCHOOL	UNIV/ COLLEG	OTHER	
TOTAL (n/w) (wt.)	1050 1038 100%	501 492 100%	549 545 100%	325 345 100%	472 387 100%	253 306 100%	135 100 100%	261 277 100%	247 351 100%	147 95 100%	127 90 100%	133 125 100%	375 435 100%	163 172 100%	178 156 100%	334 275 100%	91 101 100%	537 508 100%	386 395 100%	36 34 100%
18 to 24 Years	185 18%	103 21%	89 15%	185 54%	0 -	0 -	23 23%	48 17%	61 17%	20 21%	18 20%	16 13%	79 18%	37 22%	29 19%	40 14%	7 7%	98 19%	75 19%	6 17%
25 to 29 Years	159 15%	75 15%	84 15%	159 46%	0 -	0 -	15 15%	42 15%	49 14%	15 15%	18 20%	22 17%	75 17%	23 13%	24 15%	38 14%	3 3%	74 15%	80 20%	2 7%
30 to 34 Years	128 12%	58 12%	70 13%	0 -	128 33%	0 -	11 11%	36 13%	43 12%	12 12%	15 16%	12 9%	62 14%	15 9%	18 12%	33 12%	4 4%	61 12%	57 14%	6 17%
35 to 39 Years	107 10%	48 10%	58 11%	0 -	107 28%	0 -	7 7%	30 11%	41 12%	10 11%	7 7%	12 9%	43 10%	19 11%	16 11%	29 10%	7 7%	44 9%	52 13%	3 10%
40 to 44 Years	97 9%	49 10%	48 9%	0 -	97 25%	0 -	8 8%	25 9%	33 9%	5 5%	9 10%	18 14%	50 11%	9 5%	11 7%	28 10%	4 4%	53 10%	39 10%	1 2%
45 to 49 Years	55 5%	21 4%	33 6%	0 -	55 14%	0 -	6 6%	16 6%	18 5%	4 4%	4 4%	8 6%	19 4%	12 7%	10 7%	13 5%	8 8%	19 4%	25 6%	2 5%
50 to 59 Years	122 12%	55 11%	68 12%	0 -	0 -	122 40%	13 13%	40 14%	30 9%	15 16%	8 9%	16 13%	51 12%	18 11%	18 12%	34 12%	18 18%	78 15%	21 5%	5 15%
60 Years or older	184 18%	82 17%	101 19%	0 -	0 -	184 60%	17 17%	41 15%	77 22%	14 15%	12 13%	22 18%	57 13%	38 22%	28 18%	61 22%	49 49%	80 16%	45 12%	9 26%

AGE

BASE: TOTAL

	OCCUPATION					LANGUAGE					FAMILY INCOME				HEAD OF HOUSEHOLD	
	TOTAL	PROF/ EXEC	SALES CLER- ICAL	LABOUR	OTHERS	ENGLISH	FRENCH	ENG AND FRENCH	ENG AND OTHER	OTHER	UNDER \$15K	\$15K UNDER \$25K	\$25K UNDER \$40K	OVER \$40K	YES	NO
TOTAL (n/w)	1050	191	202	240	386	664	265	6	10	102	118	167	272	274	878	172
(wt.)	1038	178	200	241	407	641	276	7	12	99	115	162	269	266	850	188
	100%	100%	100%	100%	100%	100%	100%	100%	100%	100%	100%	100%	100%	100%	100%	100%
18 to 24 Years	185	19	39	47	79	117	49	3	5	12	28	30	40	40	87	98
	18%	11%	19%	19%	19%	18%	18%	39%	39%	12%	24%	18%	15%	15%	10%	52%
25 to 29 Years	159	37	33	52	38	109	40	2	0	8	13	23	58	39	130	29
	15%	21%	16%	22%	9%	17%	15%	33%	-	8%	11%	14%	22%	15%	15%	15%
30 to 34 Years	128	25	31	36	33	76	36	0	0	16	5	18	43	41	114	14
	12%	14%	16%	15%	8%	12%	13%	-	-	16%	5%	11%	16%	15%	13%	7%
35 to 39 Years	107	25	25	35	20	64	34	0	0	9	3	11	36	34	97	10
	10%	14%	13%	14%	5%	10%	12%	-	-	10%	3%	7%	13%	13%	11%	5%
40 to 44 Years	97	31	19	26	16	60	22	2	2	12	4	14	22	42	86	11
	9%	18%	9%	11%	4%	9%	8%	28%	19%	12%	3%	9%	8%	16%	10%	6%
45 to 49 Years	55	13	12	15	15	30	17	0	3	5	6	6	12	21	48	7
	5%	7%	6%	6%	4%	5%	6%	-	25%	5%	5%	4%	5%	8%	6%	4%
50 to 59 Years	122	21	33	24	43	61	41	0	2	18	14	18	27	28	111	11
	12%	12%	16%	10%	11%	10%	15%	-	17%	18%	12%	11%	10%	10%	13%	6%
60 Years or older	184	7	8	6	163	125	39	0	0	18	41	42	29	22	176	8
	18%	4%	4%	2%	40%	19%	14%	-	-	18%	36%	26%	11%	8%	21%	4%

REGION

BASE: TOTAL

	SEX		AGE			REGION					COMMUNITY SIZE				EDUCATION					
	TOTAL	MALE	FEMALE	18-29 YEARS	30-49 YEARS	50 YRS AND OVER	ATLANTIC	QUEBEC	ONTARIO	MAN/ SASK	ALBERTA	B.C.	OVER 5000	1000- 5000	100- 1000	UNDER 100	PUBLIC SCHOOL	HIGH SCHOOL	UNIV/ COLLEG	OTHER
TOTAL (n/w) (wt.)	1050 1038 100%	501 492 100%	549 545 100%	325 345 100%	472 387 100%	253 306 100%	135 100 100%	261 277 100%	247 351 100%	147 95 100%	127 90 100%	133 125 100%	375 435 100%	163 172 100%	178 156 100%	334 275 100%	91 101 100%	537 508 100%	386 395 100%	36 34 100%
Atlantic	100 10%	52 11%	48 9%	38 11%	31 8%	31 10%	100 100%	0 -	0 -	0 -	0 -	0 -	0 -	30 17%	25 16%	46 17%	11 11%	52 10%	34 9%	3 8%
Quebec	277 27%	135 27%	142 26%	89 26%	107 28%	81 26%	0 -	277 100%	0 -	0 -	0 -	0 -	139 32%	28 16%	30 19%	80 29%	29 29%	126 25%	105 27%	17 51%
Ontario	351 34%	153 31%	198 36%	110 32%	134 35%	107 35%	0 -	0 -	351 100%	0 -	0 -	0 -	148 34%	83 48%	60 38%	60 22%	37 37%	168 33%	142 36%	4 11%
Manitoba Saskatchewan	95 9%	41 8%	54 10%	35 10%	31 8%	30 10%	0 -	0 -	0 -	95 100%	0 -	0 -	28 6%	19 11%	6 4%	42 15%	10 10%	52 10%	30 7%	4 12%
Alberta	90 9%	46 9%	44 8%	36 10%	34 9%	20 6%	0 -	0 -	0 -	0 -	90 100%	0 -	54 12%	0 -	11 7%	25 9%	5 5%	49 10%	35 9%	1 3%
British Columbia	125 12%	65 13%	60 11%	37 11%	49 13%	38 12%	0 -	0 -	0 -	0 -	0 -	125 100%	66 15%	12 7%	24 15%	23 8%	8 8%	62 12%	50 13%	5 15%

REGION

BASE: TOTAL

	OCCUPATION					LANGUAGE					FAMILY INCOME				HEAD OF HOUSEHOLD	
	TOTAL	PROF/ EXEC	SALES CLER- ICAL	LABOUR	OTHERS	ENGLISH	FRENCH	ENG AND FRENCH	ENG AND OTHER	OTHER	UNDER \$15K	\$15K UNDER \$25K	\$25K UNDER \$40K	OVER \$40K	YES	NO
TOTAL (n/w) (wt.)	1050 1038 100%	191 178 100%	202 200 100%	260 241 100%	386 407 100%	664 641 100%	265 276 100%	6 7 100%	10 12 100%	102 99 100%	118 115 100%	167 162 100%	272 269 100%	274 266 100%	878 850 100%	172 188 100%
Atlantic	100 10%	15 9%	18 9%	25 10%	42 10%	91 14%	7 3%	1 8%	0 -	2 2%	11 10%	20 12%	25 9%	21 8%	82 10%	18 9%
Quebec	277 27%	47 26%	59 29%	62 26%	106 26%	15 2%	244 88%	3 39%	0 -	15 15%	37 32%	56 35%	74 27%	69 26%	228 27%	49 26%
Ontario	351 34%	62 35%	69 35%	79 33%	137 34%	281 44%	20 7%	3 44%	9 75%	37 38%	23 20%	43 27%	92 34%	98 37%	267 31%	84 45%
Manitoba Saskatchewan	95 9%	20 11%	15 7%	17 7%	42 10%	68 11%	3 1%	0 -	0 -	22 22%	17 15%	11 7%	21 8%	20 7%	82 10%	13 7%
Alberta	90 9%	17 10%	14 7%	25 10%	34 8%	76 12%	0 -	1 10%	0 -	14 14%	15 14%	13 8%	22 8%	26 10%	83 10%	7 4%
British Columbia	125 12%	16 9%	24 12%	34 14%	46 11%	111 17%	2 1%	0 -	3 25%	9 9%	11 10%	18 11%	35 13%	33 12%	107 13%	17 9%

DIALLING CENTRE

BASE: TOTAL

	SEX		AGE			REGION						COMMUNITY SIZE				EDUCATION				
	MALE	FEMALE	18-29 YEARS	30-49 YEARS	50 YRS AND OVER	ATLANTIC	QUEBEC	ONTARIO	MAN/SASK	ALBERTA	B.C.	OVER 500M	100M-500M	10M-UNDER 100M	UNDER 10M	PUBLIC SCHOOL	HIGH SCHOOL	UNIV/ COLLEG	OTHER	
TOTAL (n/w) (wt.)	1050 1038 100%	501 492 100%	549 545 100%	325 345 100%	472 387 100%	253 306 100%	135 100 100%	261 277 100%	247 351 100%	147 95 100%	127 90 100%	133 125 100%	375 435 100%	163 172 100%	178 156 100%	334 275 100%	91 101 100%	537 508 100%	386 395 100%	36 34 100%
St. John's	24 2%	14 3%	10 2%	9 3%	11 3%	3 1%	24 24%	0 -	0 -	0 -	0 -	0 -	0 -	7 4%	4 2%	13 5%	5 5%	7 1%	12 3%	0 -
Halifax	41 4%	19 4%	21 4%	17 5%	10 2%	14 5%	41 41%	0 -	0 -	0 -	0 -	0 -	0 -	18 11%	10 7%	12 4%	3 3%	22 4%	14 4%	2 6%
Saint John	28 3%	14 3%	14 2%	8 2%	9 2%	11 3%	28 28%	0 -	0 -	0 -	0 -	0 -	0 -	4 2%	7 4%	17 6%	3 3%	19 4%	5 1%	1 2%
P.E.I	8 1%	5 1%	3 1%	4 1%	2 1%	3 1%	8 8%	0 -	0 -	0 -	0 -	0 -	0 -	0 -	4 3%	4 1%	1 1%	5 1%	2 1%	0 -
Chicoutimi	25 2%	11 2%	14 3%	8 2%	8 2%	9 3%	0 -	25 9%	0 -	0 -	0 -	0 -	0 -	20 12%	1 1%	4 1%	5 5%	13 3%	7 2%	0 -
Quebec City	89 9%	41 8%	47 9%	31 9%	35 9%	23 7%	0 -	89 32%	0 -	0 -	0 -	0 -	35 8%	8 4%	7 5%	39 14%	7 7%	52 10%	26 7%	3 8%
Montreal	139 13%	71 14%	68 12%	40 12%	54 14%	45 15%	0 -	139 50%	0 -	0 -	0 -	0 -	80 18%	0 -	22 14%	37 13%	15 15%	49 10%	60 15%	15 43%
Ottawa Hull	25 2%	12 2%	13 2%	10 3%	10 3%	4 1%	0 -	25 9%	0 -	0 -	0 -	0 -	25 6%	0 -	0 -	0 -	1 1%	12 2%	12 3%	0 -
Ottawa	50 5%	23 5%	27 5%	15 4%	20 5%	15 5%	0 -	0 -	50 14%	0 -	0 -	0 -	31 7%	0 -	13 8%	6 2%	2 2%	25 5%	24 6%	0 -
Toronto	150 14%	58 12%	92 17%	50 14%	62 16%	38 12%	0 -	0 -	150 43%	0 -	0 -	0 -	96 22%	5 3%	16 10%	33 12%	13 13%	70 14%	66 17%	0 -
Hamilton	37 4%	18 4%	19 3%	16 5%	11 3%	10 3%	0 -	0 -	37 11%	0 -	0 -	0 -	20 5%	8 5%	7 5%	1 1%	4 4%	16 3%	15 4%	2 5%
London	77 7%	38 8%	40 7%	18 5%	25 7%	34 11%	0 -	0 -	77 22%	0 -	0 -	0 -	0 -	51 30%	13 8%	14 5%	13 13%	39 8%	23 6%	2 6%
Sudbury	37 4%	16 3%	21 4%	11 3%	16 4%	10 3%	0 -	0 -	37 11%	0 -	0 -	0 -	0 -	19 11%	12 7%	7 2%	6 6%	17 3%	13 3%	0 -
Winnipeg	53 5%	20 4%	33 6%	22 6%	17 4%	14 5%	0 -	0 -	0 -	53 56%	0 -	0 -	28 6%	0 -	3 2%	22 8%	7 7%	29 6%	17 4%	0 1%
Regina	21 2%	10 2%	10 2%	7 2%	5 1%	9 3%	0 -	0 -	0 -	21 22%	0 -	0 -	0 -	10 6%	2 1%	9 3%	1 1%	14 3%	3 1%	3 9%
Saskatoon	21 2%	10 2%	11 2%	6 2%	8 2%	6 2%	0 -	0 -	0 -	21 22%	0 -	0 -	0 -	10 6%	1 1%	10 4%	2 2%	9 2%	10 2%	1 2%
Calgary	46 4%	24 5%	22 4%	18 5%	18 5%	10 3%	0 -	0 -	0 -	0 -	46 52%	0 -	22 5%	0 -	7 4%	18 6%	1 1%	26 5%	20 5%	0 -
Edmonton	44 4%	22 4%	22 4%	18 5%	16 4%	10 3%	0 -	0 -	0 -	0 -	44 48%	0 -	32 7%	0 -	4 3%	7 3%	4 4%	23 5%	15 4%	1 3%

DIALLING CENTRE

BASE: TOTAL

	SEX		AGE			REGION			COMMUNITY SIZE				EDUCATION						
	MALE	FEMALE	18-29 YEARS	30-49 YEARS	50 YRS AND OVER	ATLANTIC	QUEBEC	ONTARIO	MAN/ SASK	ALBERTA	B.C.	OVER 500M	100M- 500M	10M- UNDER 100M	UNDER 10M	PUBLIC SCHOOL	HIGH SCHOOL	UNIV/ COLLEG	OTHER
TOTAL (n/w)	1050	501	325	472	253	135	261	247	147	127	133	375	163	178	334	91	537	386	36
(wt.)	1038	492	345	387	306	100	277	351	95	90	125	435	172	156	275	101	508	395	34
	100%	100%	100%	100%	100%	100%	100%	100%	100%	100%	100%	100%	100%	100%	100%	100%	100%	100%	100%
Vancouver	125	65	37	49	38	0	0	0	0	0	125	66	12	24	23	8	62	50	5
	12%	13%	11%	13%	12%	-	-	-	-	-	100%	15%	7%	15%	8%	12%	13%	15%	

DIALLING CENTRE

BASE: TOTAL

	TOTAL	OCCUPATION				LANGUAGE					FAMILY INCOME				HEAD OF HOUSEHOLD	
		PROF/ EXEC	SALES CLER- ICAL	LABOUR	OTHERS	ENGLISH	FRENCH	ENG AND FRENCH	ENG AND OTHER	OTHER	UNDER \$15K	\$15K UNDER \$25K	\$25K UNDER \$40K	OVER \$40K	YES	NO
TOTAL (n/w) (wt.)	1050 1038 100%	191 178 100%	202 200 100%	260 241 100%	384 407 100%	664 641 100%	265 276 100%	6 7 100%	10 12 100%	102 99 100%	118 115 100%	167 162 100%	272 269 100%	274 266 100%	878 850 100%	172 188 100%
St. John's	24 2%	5 3%	4 2%	8 3%	7 2%	24 4%	0	0	0	0	2 1%	5 3%	5 2%	4 1%	19 2%	5 2%
Halifax	41 4%	8 4%	5 2%	11 5%	17 4%	36 6%	2 1%	1 8%	0	2 2%	6 5%	6 4%	10 4%	11 4%	36 4%	5 3%
Saint John	28 3%	3 2%	7 4%	4 1%	14 4%	23 4%	5 2%	0	0	0	3 2%	8 5%	8 3%	4 1%	23 3%	5 3%
P.E.I.	8 1%	0	2 1%	2 1%	4 1%	8 1%	0	0	0	0	1 1%	1 1%	2 1%	2 1%	5 1%	4 2%
Chicoutimi	25 2%	3 2%	2 1%	6 3%	14 3%	0	25 9%	0	0	0	7 6%	4 3%	8 3%	6 2%	22 3%	3 2%
Québec City	89 9%	12 7%	24 12%	21 9%	32 8%	4 1%	83 30%	0	0	2 2%	15 13%	23 14%	19 7%	21 8%	75 9%	14 7%
Montreal	139 13%	30 17%	27 14%	28 12%	50 12%	7 1%	121 44%	0	0	11 11%	16 14%	26 16%	41 15%	32 12%	114 13%	25 13%
Ottawa Hull	25 2%	1 1%	6 3%	7 3%	10 3%	4 1%	16 6%	3 39%	0	2 2%	0	2 1%	6 2%	10 4%	17 2%	7 4%
Ottawa	50 5%	13 7%	13 7%	14 6%	10 2%	39 6%	7 3%	0	2 17%	1 1%	0	11 7%	16 6%	20 8%	43 5%	7 4%
Toronto	150 14%	26 15%	36 18%	32 13%	54 13%	125 20%	1 1%	0	5 39%	18 19%	10 9%	17 10%	47 17%	35 13%	103 12%	47 25%
Hamilton	37 4%	5 3%	4 2%	9 4%	17 4%	33 5%	0	3 44%	1 11%	0	3 3%	3 2%	5 2%	18 7%	23 3%	14 7%
London	77 7%	10 5%	12 6%	20 8%	35 9%	67 10%	1 1%	0	1 9%	8 9%	4 3%	7 4%	13 5%	16 6%	71 8%	6 3%
Sudbury	37 4%	9 5%	4 2%	3 1%	21 5%	17 3%	11 4%	0	0	9 9%	5 5%	5 3%	12 4%	8 3%	27 3%	10 5%
Winnipeg	53 5%	7 4%	11 6%	10 4%	25 6%	35 6%	3 1%	0	0	15 15%	9 8%	10 6%	12 4%	10 4%	42 5%	11 6%
Regina	21 2%	5 3%	2 1%	4 2%	8 2%	17 3%	0	0	0	3 3%	3 3%	1 1%	3 1%	5 2%	21 2%	0
Saskatoon	21 2%	8 4%	2 1%	3 1%	9 2%	16 2%	0	0	0	5 5%	4 4%	1 1%	7 2%	6 2%	19 2%	2 1%
Calgary	46 4%	9 5%	7 4%	13 5%	17 4%	41 6%	0	0	0	5 6%	5 4%	9 5%	13 5%	14 5%	42 5%	4 2%
Edmonton	44 4%	8 5%	7 3%	12 5%	16 4%	35 5%	0	1 10%	0	8 8%	10 9%	5 3%	9 3%	11 4%	40 5%	3 2%

DIALLING CENTRE

BASE: TOTAL

	OCCUPATION					LANGUAGE					FAMILY INCOME				HEAD OF HOUSEHOLD	
	TOTAL	PROF/ EXEC	SALES CLER- ICAL	LABOUR	OTHERS	ENGLISH	FRENCH	ENG AND FRENCH	ENG AND OTHER	OTHER	UNDER \$15K	\$15K UNDER \$25K	\$25K UNDER \$40K	OVER \$40K	YES	NO
TOTAL (n/w)	1050	191	202	260	386	664	265	6	10	102	118	167	272	274	878	172
(wt.)	1038	178	200	241	407	641	276	7	12	99	115	162	267	266	850	188
	100%	100%	100%	100%	100%	100%	100%	100%	100%	100%	100%	100%	100%	100%	100%	100%
Vancouver	125	16	24	34	46	111	2	0	3	9	11	18	35	33	107	17
	12%	9%	12%	14%	11%	17%	1%	-	25%	9%	10%	11%	13%	12%	13%	9%

COMMUNITY SIZE

BASE: TOTAL

	SEX		AGE			REGION						COMMUNITY SIZE				EDUCATION				
	TOTAL	MALE	FEMALE	18-29 YEARS	30-49 YEARS	50 YRS AND OVER	ATLANTIC	QUEBEC	ONTARIO	MAN/ SASK	ALBERTA	B.C.	OVER 500M	100M- 500M	10M- UNDER 100M	UNDER 10M	PUBLIC SCHOOL	HIGH SCHOOL	UNIV/ COLLEG	OTHER
TOTAL (n/w)	1050	501	549	325	472	253	135	261	247	147	127	133	375	163	178	334	91	537	386	36
(wt.)	1038	492	545	345	387	306	100	277	351	95	90	125	435	172	156	275	101	508	395	34
	100%	100%	100%	100%	100%	100%	100%	100%	100%	100%	100%	100%	100%	100%	100%	100%	100%	100%	100%	100%
Over 500,000	435	200	235	154	173	108	0	139	148	28	54	66	435	0	0	0	27	185	210	12
	42%	41%	43%	45%	45%	35%	-	50%	42%	29%	60%	53%	100%	-	-	-	27%	36%	53%	36%
100,000 to 500,000	172	75	97	60	55	57	30	28	83	19	0	12	0	172	0	0	18	81	68	5
	17%	15%	18%	17%	14%	18%	30%	10%	24%	20%	-	10%	-	100%	-	-	18%	16%	17%	14%
10,000 to under 100,000	156	80	75	53	56	47	25	30	60	6	11	24	0	0	156	0	13	89	49	4
	15%	16%	14%	15%	14%	15%	25%	11%	17%	7%	12%	19%	-	-	100%	-	13%	18%	12%	11%
Under 10,000	275	137	138	78	103	95	46	80	60	42	25	23	0	0	0	275	42	153	67	13
	27%	28%	25%	23%	27%	31%	46%	29%	17%	44%	28%	19%	-	-	-	100%	41%	30%	17%	39%

BASE: TOTAL

	OCCUPATION					LANGUAGE					FAMILY INCOME				HEAD OF HOUSEHOLD	
	TOTAL	PROF/ EXEC	SALES CLER- ICAL	LABOUR	OTHERS	ENGLISH	FRENCH	ENG AND FRENCH	ENG AND OTHER	OTHER	UNDER \$15K	\$15K UNDER \$25K	\$25K UNDER \$40K	OVER \$40K	YES	NO
TOTAL (n/w)	1050	191	202	260	386	664	265	6	10	102	118	167	272	274	878	172
(wt.)	1038	178	200	241	407	641	276	7	12	99	115	162	269	266	850	188
	100%	100%	100%	100%	100%	100%	100%	100%	100%	100%	100%	100%	100%	100%	100%	100%
Over 500,000	435	77	98	88	162	247	122	6	10	50	44	50	115	133	343	91
	42%	43%	49%	36%	40%	39%	44%	92%	79%	51%	39%	31%	43%	50%	40%	49%
100,000 to 500,000	172	32	23	37	77	118	39	0	2	11	23	22	40	43	145	26
	17%	18%	11%	15%	19%	18%	14%	-	13%	11%	20%	13%	15%	16%	17%	14%
10,000 to under 100,000	156	22	29	47	57	108	33	0	0	14	11	31	37	35	124	32
	15%	12%	15%	20%	14%	17%	12%	-	4%	14%	9%	19%	14%	13%	15%	17%
Under 10,000	275	46	49	70	110	168	82	1	1	24	37	59	76	56	237	38
	27%	26%	25%	29%	27%	26%	30%	8%	4%	24%	32%	36%	28%	21%	28%	20%

EDUCATION

BASE: TOTAL

	SEX		AGE			REGION					COMMUNITY SIZE				EDUCATION					
	TOTAL	MALE	FEMALE	18-29 YEARS	30-49 YEARS	50 YRS AND OVER	ATLANTIC	QUEBEC	ONTARIO	MAN/SASK	ALBERTA	B.C.	OVER 500M	100M-500M	10M-100M	UNDER 10M	PUBLIC SCHOOL	HIGH SCHOOL	UNIV/ COLLEG	OTHER
TOTAL (n/w) (wt.)	1050 1038 100%	501 492 100%	549 545 100%	325 345 100%	472 387 100%	253 306 100%	135 100 100%	261 277 100%	247 351 100%	147 95 100%	127 90 100%	133 125 100%	375 435 100%	163 172 100%	178 156 100%	334 275 100%	91 101 100%	537 508 100%	386 395 100%	36 34 100%
Some public school	38 4%	22 5%	16 3%	0 -	12 3%	26 9%	3 3%	17 6%	9 3%	5 6%	1 1%	3 2%	11 2%	5 3%	5 3%	17 6%	38 38%	0 -	0 -	0 -
Completed public school	62 6%	32 7%	30 6%	10 3%	12 3%	41 13%	8 8%	12 4%	28 8%	4 5%	4 5%	6 4%	17 4%	13 7%	8 5%	24 9%	62 62%	0 -	0 -	0 -
Some secondary school	225 22%	98 20%	127 23%	70 20%	75 19%	80 26%	25 25%	69 25%	71 20%	21 22%	18 20%	22 17%	67 15%	35 20%	44 28%	80 29%	0 -	225 44%	0 -	0 -
Completed secondary school	283 27%	120 24%	163 30%	102 30%	103 27%	78 26%	28 28%	57 21%	97 28%	31 32%	31 34%	40 32%	118 27%	46 27%	46 29%	73 27%	0 -	283 56%	0 -	0 -
Some university	106 10%	47 10%	60 11%	46 13%	40 10%	21 7%	11 11%	28 10%	36 10%	10 11%	7 8%	14 11%	59 14%	20 11%	15 10%	13 5%	0 -	0 -	106 27%	0 -
Completed university	149 14%	85 17%	64 12%	45 13%	78 20%	26 9%	14 14%	37 13%	56 16%	11 11%	13 15%	18 14%	85 20%	28 16%	13 8%	23 8%	0 -	0 -	149 38%	0 -
Some college	64 6%	32 6%	32 6%	32 9%	25 6%	7 2%	1 1%	24 9%	21 6%	2 2%	3 4%	12 10%	31 7%	9 5%	10 6%	15 5%	0 -	0 -	64 16%	0 -
Completed college	75 7%	31 6%	44 8%	32 9%	31 8%	12 4%	7 7%	16 6%	29 8%	6 7%	11 13%	5 4%	35 8%	12 7%	11 7%	17 6%	0 -	0 -	75 19%	0 -
Other	26 3%	20 4%	7 1%	4 1%	12 3%	10 3%	3 3%	15 5%	2 1%	1 1%	1 1%	4 3%	9 2%	2 1%	4 2%	11 4%	0 -	0 -	0 -	26 77%
No formal schooling	1 #	1 #	0 -	0 -	0 -	1 #	0 -	1 #	0 -	0 -	0 -	0 -	0 -	0 -	0 #	1 #	0 -	0 -	0 -	1 4%
REFUSED NOT STATED	7 1%	4 1%	3 1%	4 1%	0 #	3 1%	0 -	1 #	2 #	3 3%	0 -	1 1%	3 1%	3 2%	0 -	1 #	0 -	0 -	0 -	7 20%

EDUCATION

BASE: TOTAL

	TOTAL	OCCUPATION				LANGUAGE					FAMILY INCOME				HEAD OF HOUSEHOLD	
		PROF/ EXEC	SALES CLER- ICAL	LABOUR	OTHERS	ENGLISH	FRENCH	ENG AND FRENCH	ENG AND OTHER	OTHER	UNDER \$15K	\$15K UNDER \$25K	\$25K UNDER \$40K	OVER \$40K	YES	NO
TOTAL (n/w) (wt.)	1050 1038 100%	191 178 100%	202 200 100%	260 241 100%	386 407 100%	664 641 100%	265 276 100%	6 7 100%	10 12 100%	102 99 100%	118 115 100%	167 162 100%	272 269 100%	274 266 100%	878 850 100%	172 188 100%
Some public school	38 4%	1 1%	4 2%	7 3%	26 6%	17 3%	15 6%	0 -	0 -	6 6%	14 12%	8 5%	4 1%	2 1%	31 4%	7 4%
Completed public school	62 6%	3 2%	5 3%	14 6%	40 10%	37 6%	14 5%	0 -	0 -	11 12%	13 11%	11 7%	16 6%	8 3%	59 7%	3 2%
Some secondary school	225 22%	19 10%	34 17%	67 28%	103 25%	129 20%	73 26%	0 -	4 37%	19 20%	34 30%	52 32%	62 23%	29 11%	185 22%	40 21%
Completed secondary school	283 27%	23 13%	76 38%	80 33%	101 25%	196 31%	63 23%	3 41%	2 20%	19 19%	20 18%	52 32%	79 29%	57 21%	226 27%	57 31%
Some university	106 10%	27 15%	17 9%	11 5%	49 12%	65 10%	25 9%	1 20%	3 21%	12 13%	15 13%	12 7%	30 11%	26 10%	83 10%	23 12%
Completed university	149 14%	68 38%	23 12%	16 7%	37 9%	100 16%	37 13%	1 20%	1 9%	10 10%	6 5%	8 5%	38 14%	76 28%	136 16%	13 7%
Some college	64 6%	13 7%	13 7%	19 8%	19 5%	31 5%	21 8%	1 20%	2 13%	9 9%	3 3%	3 2%	20 7%	20 8%	36 4%	28 15%
Completed college	75 7%	18 10%	21 10%	16 7%	20 5%	52 8%	14 5%	0 -	0 -	9 9%	3 3%	11 7%	14 5%	39 15%	62 7%	13 7%
Other	26 3%	4 2%	6 3%	10 4%	6 1%	12 2%	12 4%	0 -	0 -	3 3%	3 3%	3 2%	7 2%	5 2%	25 3%	1 #
No formal schooling	1 #	0 -	0 -	0 -	1 #	0 -	1 #	0 -	0 -	0 -	1 1%	0 -	0 -	0 -	1 #	0 -
REFUSED NOT STATED	7 1%	3 2%	0 -	0 -	4 1%	2 #	1 #	0 -	0 -	0 #	1 1%	0 -	0 -	4 1%	5 1%	2 1%

TOTAL NUMBER OF PEOPLE IN HOUSEHOLD

BASE: TOTAL

	SEX		AGE			REGION					COMMUNITY SIZE				EDUCATION					
	MALE	FEMALE	18-29 YEARS	30-49 YEARS	50 YRS AND OVER	ATLANTIC	QUEBEC	ONTARIO	MAN/ SASK	ALBERTA	B.C.	OVER 500M	100M- 500M	10M- UNDER 100M	UNDER 10M	PUBLIC SCHOOL	HIGH SCHOOL	UNIV/ COLLEG	OTHER	
TOTAL (n/w) (wt.)	1050 1038 100%	501 492 100%	549 545 100%	325 345 100%	472 387 100%	253 306 100%	135 100 100%	261 277 100%	247 351 100%	147 95 100%	127 90 100%	133 125 100%	375 435 100%	163 172 100%	178 156 100%	334 275 100%	91 101 100%	537 508 100%	386 393 100%	36 34 100%
One	156 15%	78 16%	78 14%	39 11%	41 11%	76 25%	12 12%	42 15%	48 14%	11 12%	18 20%	26 21%	76 17%	24 14%	24 15%	33 12%	15 15%	61 12%	72 18%	8 23%
Two	324 31%	162 33%	161 30%	91 26%	81 21%	152 50%	27 27%	97 35%	95 27%	38 40%	32 36%	34 27%	123 28%	65 38%	43 27%	93 34%	50 49%	153 30%	109 28%	11 33%
Three	229 22%	103 21%	126 23%	102 30%	78 20%	49 16%	21 21%	60 22%	82 23%	23 24%	17 18%	26 21%	105 24%	34 20%	37 24%	53 19%	14 14%	124 24%	85 21%	6 18%
Four	189 18%	85 17%	104 19%	73 21%	102 26%	14 5%	22 22%	50 18%	70 20%	13 14%	12 13%	22 18%	79 18%	25 15%	28 18%	57 21%	15 15%	93 18%	74 19%	6 17%
Five	103 10%	46 9%	57 10%	26 8%	64 17%	13 4%	13 13%	21 7%	42 12%	7 7%	9 10%	12 9%	44 10%	14 8%	18 11%	27 10%	4 4%	53 11%	44 11%	1 2%
Six or more	33 3%	14 3%	19 3%	11 3%	19 5%	3 1%	5 5%	7 3%	10 3%	2 3%	3 3%	5 4%	8 2%	8 4%	6 4%	11 4%	2 2%	19 4%	10 2%	2 7%
REFUSED NOT STATED	4 n	3 1%	1 n	2 n	3 1%	0 -	0 -	0 -	4 1%	0 n	0 -	0 -	0 -	1 1%	2 1%	1 1%	0 -	4 1%	0 -	0 -

TOTAL NUMBER OF PEOPLE IN HOUSEHOLD

BASE: TOTAL

	OCCUPATION					LANGUAGE					FAMILY INCOME				HEAD OF HOUSEHOLD	
	TOTAL	PROF/ EXEC	SALES CLER- ICAL	LABOUR	OTHERS	ENGLISH	FRENCH	ENG AND FRENCH	ENG AND OTHER	OTHER	UNDER \$15K	\$15K UNDER \$25K	\$25K UNDER \$40K	OVER \$40K	YES	NO
TOTAL (n/o (wt.))	1050 1038 100%	191 178 100%	202 200 100%	260 241 100%	386 407 100%	664 641 100%	265 276 100%	6 7 100%	10 12 100%	102 99 100%	118 115 100%	167 162 100%	272 269 100%	274 266 100%	878 850 100%	172 188 100%
One	156 15%	30 17%	19 9%	38 16%	69 17%	95 15%	40 14%	0 -	1 4%	21 21%	40 35%	33 21%	36 13%	19 7%	152 18%	4 2%
Two	324 31%	53 30%	54 27%	55 23%	157 39%	198 31%	94 34%	2 28%	4 29%	24 25%	45 39%	63 39%	67 25%	68 26%	291 34%	32 17%
Three	229 22%	37 21%	55 28%	64 27%	69 17%	150 23%	62 22%	3 43%	0 -	14 14%	19 17%	28 17%	68 25%	56 21%	164 19%	65 35%
Four	189 18%	35 20%	50 25%	46 19%	55 14%	110 17%	53 19%	1 20%	8 66%	17 17%	7 6%	23 14%	60 22%	72 27%	136 16%	53 28%
Five	103 10%	17 10%	19 9%	29 12%	36 9%	67 10%	19 7%	1 10%	0 -	17 17%	0 -	10 6%	30 11%	41 15%	80 9%	23 12%
Six or more	33 3%	6 3%	2 1%	7 3%	17 4%	20 3%	8 3%	0 -	0 -	3 3%	3 3%	4 3%	6 2%	10 4%	24 3%	9 5%
REFUSED NOT STATED	4 H	0 -	0 -	2 1%	3 1%	1 H	1 H	0 -	0 -	2 2%	0 H	0 -	2 1%	0 -	3 H	1 1%

NUMBER OF PEOPLE IN HOUSEHOLD UNDER 10 YEARS OF AGE

BASE: TOTAL

	SEX		AGE			REGION						COMMUNITY SIZE				EDUCATION				
	TOTAL	MALE	FEMALE	18-29 YEARS	30-49 YEARS	50 YRS AND OVER	ATLANTIC	QUEBEC	ONTARIO	MAN/ SASK	ALBERTA	B.C.	OVER 500M	100M- 500M	10M- 100M	UNDER 10M	PUBLIC SCHOOL	HIGH SCHOOL	UNIV/ COLLEC	OTHER
TOTAL (n/w)	1050	501	549	325	472	253	135	261	247	147	127	133	375	163	178	334	91	537	386	36
(wt.)	1038	492	545	345	387	306	100	277	351	95	90	125	435	172	156	275	101	508	395	34
	100%	100%	100%	100%	100%	100%	100%	100%	100%	100%	100%	100%	100%	100%	100%	100%	100%	100%	100%	100%
None	768 74%	401 81%	367 67%	244 71%	225 58%	300 98%	75 75%	204 74%	263 75%	68 71%	63 70%	95 76%	314 72%	137 80%	118 76%	200 73%	89 89%	358 70%	293 74%	28 83%
One	150 14%	51 10%	100 18%	67 19%	77 20%	6 2%	15 15%	44 16%	47 13%	15 16%	12 13%	18 14%	66 15%	22 13%	21 14%	41 15%	7 7%	84 16%	57 15%	2 7%
Two	89 9%	31 6%	58 11%	26 7%	63 16%	0 -	7 7%	24 9%	31 9%	8 9%	12 13%	7 6%	45 10%	6 3%	13 9%	25 9%	4 4%	50 10%	32 8%	4 10%
Three	21 2%	5 1%	16 3%	7 2%	13 3%	0 -	2 2%	4 1%	8 2%	3 3%	2 2%	3 2%	6 1%	5 3%	3 2%	6 2%	0 -	13 2%	8 2%	0 -
Four or more	7 1%	3 1%	4 1%	2 #	6 2%	0 -	0 -	1 #	1 #	1 1%	2 2%	3 2%	3 1%	1 1%	1 #	3 1%	0 -	4 1%	4 1%	0 -
REFUSED NOT STATED	2 #	2 #	0 -	0 -	2 1%	0 -	0 -	1 #	1 #	0 -	0 -	0 -	1 #	1 1%	0 -	0 -	0 -	1 #	1 #	0 -

NUMBER OF PEOPLE IN HOUSEHOLD UNDER 10 YEARS OF AGE

BASE: TOTAL

	OCCUPATION					LANGUAGE					FAMILY INCOME				HEAD OF HOUSEHOLD	
	TOTAL	PROF/ EXEC	SALES CLER- ICAL	LABOUR	OTHERS	ENGLISH	FRENCH	ENG AND FRENCH	ENG AND OTHER	OTHER	UNDER \$15K	\$15K UNDER \$25K	\$25K UNDER \$40K	OVER \$40K	YES	NO
TOTAL (n/w)	1050	191	202	260	386	664	265	6	10	102	118	167	272	274	878	172
(wt.)	1038	178	200	241	407	641	276	7	12	99	115	162	269	266	850	188
	100%	100%	100%	100%	100%	100%	100%	100%	100%	100%	100%	100%	100%	100%	100%	100%
None	768	127	138	176	318	470	200	4	11	81	96	128	179	184	613	155
	74%	71%	69%	73%	78%	73%	72%	67%	87%	82%	84%	79%	66%	69%	72%	82%
One	150	28	35	37	48	96	45	2	0	7	14	17	52	45	128	23
	14%	16%	18%	15%	12%	15%	16%	24%	-	7%	13%	10%	19%	17%	15%	12%
Two	89	17	20	23	28	55	26	0	2	7	2	14	29	27	80	10
	9%	10%	10%	10%	7%	9%	10%	-	13%	7%	2%	9%	11%	10%	9%	5%
Three	21	4	6	2	9	13	4	1	0	3	1	1	8	7	20	1
	2%	2%	3%	1%	2%	2%	1%	10%	-	3%	1%	1%	3%	3%	2%	1%
Four or more	7	2	0	3	3	5	1	0	0	1	1	1	1	3	7	0
	1%	1%	-	1%	1%	1%	1%	-	-	1%	1%	1%	1%	1%	1%	-
REFUSED	2	0	0	1	0	2	0	0	0	0	0	0	0	0	2	0
NOT STATED	1	-	-	1	-	1	-	-	-	-	-	-	-	-	1	-

NUMBER OF PEOPLE IN HOUSEHOLD BETWEEN 10 AND 17 YEARS OF AGE

BASE: TOTAL

	SEX		AGE			REGION					COMMUNITY SIZE				EDUCATION					
	TOTAL	MALE	FEMALE	18-29 YEARS	30-49 YEARS	50 YRS AND OVER	ATLANTIC	QUEBEC	ONTARIO	MAN/SASK	ALBERTA	B.C.	OVER 500M	100M-500M	10M-100M	UNDER 10M	PUBLIC SCHOOL	HIGH SCHOOL	UNIV/ COLLEG	OTHER
TOTAL (n/w) (wt.)	1050 1038 100%	501 492 100%	549 545 100%	325 345 100%	472 387 100%	253 306 100%	135 100 100%	261 277 100%	247 351 100%	147 95 100%	127 90 100%	133 125 100%	375 435 100%	163 172 100%	178 156 100%	334 275 100%	91 101 100%	537 508 100%	386 395 100%	36 34 100%
None	825 80%	398 81%	428 78%	296 86%	243 63%	287 94%	77 77%	225 81%	270 77%	80 84%	76 84%	99 79%	357 82%	139 81%	125 80%	204 74%	83 83%	397 78%	318 80%	27 80%
One	137 13%	56 11%	82 15%	36 11%	86 22%	15 5%	13 13%	37 13%	55 16%	10 10%	10 11%	14 11%	54 12%	19 11%	17 11%	48 17%	10 10%	76 15%	48 12%	4 10%
Two	59 6%	29 6%	30 6%	11 3%	46 12%	2 1%	8 8%	12 4%	23 7%	5 5%	4 4%	7 6%	21 5%	9 5%	11 7%	19 7%	7 7%	26 5%	23 6%	3 8%
Three	13 1%	7 1%	6 1%	1 H	10 3%	2 1%	3 3%	2 1%	2 1%	1 1%	1 1%	5 4%	2 1%	4 2%	2 1%	5 2%	0 H	7 1%	5 1%	1 2%
Four or more	1 H	1 H	0 -	0 -	1 H	0 -	0 -	1 H	0 -	0 -	0 -	0 -	0 -	0 -	1 H	0 -	0 -	1 H	0 -	0 -
REFUSED NOT STATED	2 H	2 H	0 -	0 -	2 1%	0 -	0 -	1 H	1 H	0 -	0 -	0 -	1 H	1 1%	0 -	0 -	0 -	1 H	1 H	0 -

NUMBER OF PEOPLE IN HOUSEHOLD BETWEEN 10 AND 17 YEARS OF AGE

BASE: TOTAL

	OCCUPATION					LANGUAGE					FAMILY INCOME				HEAD OF HOUSEHOLD	
	TOTAL	PROF/ EXEC	SALES CLER- ICAL	LABOUR	OTHERS	ENGLISH	FRENCH	ENG AND FRENCH	ENG AND OTHER	OTHER	UNDER \$15K	\$15K UNDER \$25K	\$25K UNDER \$40K	OVER \$40K	YES	NO
TOTAL (n/w) (wt.)	1050 1038 100%	191 178 100%	202 200 100%	260 241 100%	386 407 100%	664 641 100%	265 276 100%	6 7 100%	10 12 100%	102 99 100%	118 115 100%	167 162 100%	272 269 100%	274 266 100%	878 850 100%	172 188 100%
None	825 80%	137 77%	151 76%	188 78%	344 85%	506 79%	228 82%	5 80%	12 100%	73 74%	101 88%	137 85%	213 79%	192 72%	682 80%	143 76%
One	137 13%	26 15%	35 17%	33 14%	38 9%	91 14%	33 12%	1 20%	0 -	11 11%	9 8%	18 11%	32 12%	48 18%	107 13%	30 16%
Two	59 6%	13 7%	12 6%	16 7%	14 4%	35 5%	13 5%	0 -	0 -	11 11%	3 3%	4 3%	22 8%	22 8%	46 5%	13 7%
Three	13 1%	1 1%	1 1%	2 1%	7 2%	8 1%	2 1%	0 -	0 -	3 3%	1 1%	3 2%	1 *	4 2%	12 1%	1 1%
Four or more	1 #	0 -	0 -	1 #	0 -	0 -	1 #	0 -	0 -	0 -	0 -	0 -	1 #	0 -	1 #	0 -
REFUSED NOT STATED	2 #	0 -	0 -	1 #	0 -	2 #	0 -	0 -	0 -	0 -	0 -	0 -	0 -	0 -	2 #	0 -

OCCUPATION

BASE: TOTAL

	SEX		AGE			REGION					COMMUNITY SIZE				EDUCATION					
	TOTAL	MALE	FEMALE	18-29 YEARS	30-49 YEARS	50 YRS AND OVER	ATLANTIC	QUEBEC	ONTARIO	MAN/ SASK	ALBERTA	B.C.	OVER 5000	1000- 5000	100- 1000	UNDER 100	PUBLIC SCHOOL	HIGH SCHOOL	UNIV/ COLLEG	OTHER
TOTAL (n/w)	1050	501	549	325	472	253	135	261	247	147	127	133	375	163	178	334	91	537	386	36
(wt.)	1038	492	545	345	387	306	100	277	351	95	90	125	435	172	156	275	101	508	395	34
	100%	100%	100%	100%	100%	100%	100%	100%	100%	100%	100%	100%	100%	100%	100%	100%	100%	100%	100%	100%
Professional	178	96	82	55	95	28	15	47	62	20	17	16	77	32	22	46	4	42	125	7
	17%	19%	15%	16%	24%	9%	15%	17%	18%	21%	19%	13%	18%	19%	14%	17%	4%	8%	32%	21%
Sales/ Clerical	200	71	129	72	87	41	18	59	69	15	14	24	96	23	29	49	9	110	75	6
	19%	14%	24%	21%	22%	13%	18%	21%	20%	16%	16%	19%	23%	13%	19%	18%	9%	22%	19%	18%
Labour	241	172	69	99	112	30	25	62	79	17	25	34	88	37	47	70	22	147	62	10
	23%	35%	13%	29%	29%	10%	25%	22%	22%	18%	28%	27%	20%	21%	30%	25%	21%	29%	16%	30%
Other	407	145	262	117	84	206	42	106	137	42	34	46	162	77	57	110	66	204	125	11
	39%	29%	48%	34%	22%	67%	42%	38%	39%	44%	38%	37%	37%	45%	37%	40%	66%	40%	32%	31%
REFUSED NOT STATED	12	8	4	2	9	1	0	3	4	1	0	4	9	3	0	0	0	4	8	0
	1%	2%	1%	0	2%	0	0	1%	1%	1%	0	3%	2%	2%	0	0	0	1%	2%	0

OCCUPATION

BASE: TOTAL

	OCCUPATION					LANGUAGE					FAMILY INCOME				HEAD OF HOUSEHOLD	
	TOTAL	PROF/ EXEC	SALES CLER- ICAL	LABOUR	OTHERS	ENGLISH	FRENCH	ENG AND FRENCH	ENG AND OTHER	OTHER	UNDER \$15K	\$15K UNDER \$25K	\$25K UNDER \$40K	OVER \$40K	YES	NO
TOTAL (n/w) (wt.)	1050 1038 100%	191 178 100%	202 200 100%	260 241 100%	386 407 100%	664 641 100%	265 276 100%	6 7 100%	10 12 100%	102 99 100%	118 115 100%	167 162 100%	272 269 100%	274 266 100%	878 850 100%	172 188 100%
Professional	178 17%	178 100%	0 -	0 -	0 -	115 18%	45 16%	0 -	3 22%	14 15%	3 2%	21 13%	46 17%	82 31%	161 19%	17 9%
Sales/ Clerical	200 19%	0 -	200 100%	0 -	0 -	116 18%	64 23%	2 33%	4 34%	14 14%	9 8%	26 16%	62 23%	59 22%	159 19%	40 21%
Labour	241 23%	0 -	0 -	241 100%	0 -	153 24%	58 21%	2 28%	5 40%	24 24%	14 12%	43 27%	86 32%	54 20%	193 23%	48 25%
Other	407 39%	0 -	0 -	0 -	407 100%	248 39%	107 39%	3 39%	1 4%	47 48%	89 77%	71 44%	75 28%	70 26%	323 38%	83 44%
REFUSED NOT STATED	12 1%	0 -	0 -	0 -	0 -	10 1%	2 1%	0 -	0 -	0 -	0 -	1 1%	0 -	1 1%	12 1%	0 -

LANGUAGE

BASE: TOTAL

	SEX		AGE			REGION					COMMUNITY SIZE				EDUCATION					
	TOTAL	MALE	FEMALE	18-29 YEARS	30-49 YEARS	50 YRS AND OVER	ATLANTIC	QUEBEC	ONTARIO	MAN/ SASK	ALBERTA	B.C.	OVER 500M	100M- 500M	10M- UNDER 100M	UNDER 10M	PUBLIC SCHOOL	HIGH SCHOOL	UNIV/ COLLEG	OTHER
TOTAL (n/w)	1050	501	549	325	472	253	135	261	247	147	127	133	375	143	178	334	91	537	386	36
(wt.)	1038	492	545	345	387	306	100	277	351	95	90	125	435	172	156	275	101	508	395	34
	100%	100%	100%	100%	100%	100%	100%	100%	100%	100%	100%	100%	100%	100%	100%	100%	100%	100%	100%	100%
English	641	294	347	226	229	186	91	15	281	68	76	111	247	118	108	168	54	325	249	14
	62%	60%	64%	66%	59%	61%	91%	5%	80%	72%	84%	89%	57%	67%	69%	61%	54%	64%	63%	41%
French	276	132	145	89	108	79	7	244	20	3	0	2	122	39	33	82	30	136	96	15
	27%	27%	27%	26%	28%	26%	7%	88%	6%	3%	-	1%	28%	23%	21%	30%	29%	27%	24%	43%
English and French	7	3	3	5	2	0	1	3	3	0	1	0	6	0	0	1	0	3	4	0
	1%	1%	1%	1%	1%	-	1%	1%	1%	-	1%	-	1%	-	-	1%	-	1%	1%	-
Other	111	63	48	25	47	38	2	15	46	22	14	12	60	13	14	24	17	45	46	3
	11%	13%	9%	7%	12%	12%	2%	5%	13%	23%	15%	10%	14%	7%	9%	9%	17%	9%	12%	9%
REFUSED	3	0	3	0	0	3	0	0	0	2	0	1	0	2	0	1	0	0	0	3
NOT STATED	1%	-	1%	-	-	1%	-	-	-	2%	-	1%	-	1%	-	1%	-	-	-	7%

LANGUAGE

BASE: TOTAL

	OCCUPATION					LANGUAGE					FAMILY INCOME				HEAD OF HOUSEHOLD	
	TOTAL	PROF/ EXEC	SALES CLER- ICAL	LABOUR	OTHERS	ENGLISH	FRENCH	ENG AND FRENCH	ENG AND OTHER	OTHER	UNDER \$15K	\$15K UNDER \$25K	\$25K UNDER \$40K	OVER \$40K	YES	NO
TOTAL (n/w)	1050	191	202	260	386	664	265	6	10	102	118	167	272	274	878	172
(wt.)	1038	178	200	241	407	641	276	7	12	99	115	162	269	266	850	188
	100%	100%	100%	100%	100%	100%	100%	100%	100%	100%	100%	100%	100%	100%	100%	100%
English	641	115	116	153	248	641	0	0	0	0	64	93	164	168	535	106
	62%	65%	58%	63%	61%	100%	-	-	-	-	56%	58%	61%	63%	63%	56%
French	276	45	64	58	107	0	276	0	0	0	37	61	68	66	224	53
	27%	25%	32%	24%	26%	-	100%	-	-	-	32%	38%	25%	25%	26%	28%
English and French	7	0	2	2	3	0	0	7	0	0	0	0	2	3	4	3
	1%	-	1%	1%	1%	-	-	100%	-	-	-	-	1%	1%	1%	2%
Other	111	17	18	28	47	0	0	0	12	99	13	7	35	30	85	25
	11%	10%	9%	12%	12%	-	-	-	100%	100%	11%	4%	13%	11%	10%	14%
REFUSED	3	1	0	0	2	0	0	0	0	0	1	0	0	0	2	1
NOT STATED	1	1	-	-	1	-	-	-	-	-	1%	-	-	-	1%	1%

FAMILY INCOME

BASE: TOTAL

	SEX		AGE			REGION					COMMUNITY SIZE				EDUCATION					
	TOTAL	MALE	FEMALE	18-29 YEARS	30-49 YEARS	50 YRS AND OVER	ATLANTIC	QUEBEC	ONTARIO	MAN/ SASK	ALBERTA	B.C.	OVER 5000	1000- 5000	100- UNDER 1000	UNDER 100	PUBLIC SCHOOL	HIGH SCHOOL	UNIV/ COLLEG	OTHER
TOTAL (n/e) (wt.)	1050 1038 100%	501 492 100%	549 545 100%	325 345 100%	472 387 100%	253 306 100%	135 100 100%	261 277 100%	247 351 100%	147 95 100%	127 90 100%	133 125 100%	375 435 100%	163 172 100%	178 156 100%	334 275 100%	91 101 100%	537 508 100%	386 395 100%	36 34 100%
Under \$10,000	53 5%	17 4%	36 7%	24 7%	5 1%	24 8%	4 4%	21 8%	11 3%	9 9%	6 6%	2 2%	16 4%	14 8%	3 2%	20 7%	12 12%	26 5%	12 3%	3 9%
\$10,000 to under \$15,000	62 6%	27 5%	35 6%	17 5%	13 3%	31 10%	8 8%	16 6%	11 3%	8 9%	10 11%	9 7%	28 7%	8 5%	7 5%	17 6%	14 14%	29 6%	16 4%	3 7%
\$15,000 to under \$20,000	86 8%	36 7%	50 9%	34 10%	20 5%	32 11%	14 14%	33 12%	15 4%	6 6%	5 6%	13 11%	26 6%	9 5%	15 10%	36 13%	10 10%	60 12%	15 4%	1 4%
\$20,000 to under \$25,000	75 7%	32 6%	43 8%	19 5%	29 7%	28 9%	6 6%	23 8%	28 8%	5 6%	8 9%	4 3%	24 5%	12 7%	16 10%	23 8%	10 10%	45 9%	20 5%	2 5%
\$25,000 to under \$30,000	109 10%	57 12%	52 10%	37 11%	40 10%	31 10%	7 7%	31 11%	33 9%	12 12%	8 9%	18 15%	44 10%	22 13%	16 10%	27 10%	8 8%	54 11%	46 12%	1 4%
\$30,000 to under \$40,000	140 13%	72 15%	68 16%	61 18%	74 19%	25 8%	18 18%	42 15%	59 17%	10 10%	14 15%	17 14%	71 16%	18 11%	22 14%	49 18%	11 11%	87 17%	56 14%	5 16%
\$40,000 and over	266 26%	140 29%	126 23%	80 23%	138 36%	49 16%	21 21%	69 25%	98 28%	20 21%	26 28%	33 26%	133 31%	43 25%	35 22%	56 20%	10 10%	87 17%	161 41%	9 25%
REFUSED NOT STATED	226 22%	112 23%	115 21%	74 21%	68 18%	85 28%	22 22%	41 15%	95 27%	26 27%	14 16%	28 22%	93 21%	44 26%	42 27%	48 17%	25 25%	122 24%	69 17%	11 31%

FAMILY INCOME

BASE: TOTAL

	OCCUPATION					LANGUAGE					FAMILY INCOME				HEAD OF HOUSEHOLD	
	TOTAL	PROF/ EXEC	SALES CLER- ICAL	LABOUR	OTHERS	ENGLISH	FRENCH	ENG AND FRENCH	ENG AND OTHER	OTHER	UNDER \$15K	\$15K UNDER \$25K	\$25K UNDER \$40K	OVER \$40K	YES	NO
TOTAL (n/w)	1050	191	202	260	386	664	265	6	10	102	118	167	272	274	878	172
(wt.)	1038	178	200	241	407	641	276	7	12	99	115	162	269	266	850	188
	100%	100%	100%	100%	100%	100%	100%	100%	100%	100%	100%	100%	100%	100%	100%	100%
Under \$10,000	53	1	6	3	43	26	22	0	0	4	53	0	0	0	41	12
	5%	1%	3%	1%	10%	4%	8%	-	-	4%	46%	-	-	-	5%	7%
\$10,000 to under \$15,000	62	2	3	11	46	38	15	0	0	9	62	0	0	0	55	6
	6%	1%	1%	5%	11%	6%	5%	-	-	9%	54%	-	-	-	7%	3%
\$15,000 to under \$20,000	86	12	13	24	37	53	31	0	0	2	0	86	0	0	79	7
	8%	7%	7%	10%	9%	8%	11%	-	-	2%	-	53%	-	-	9%	4%
\$20,000 to under \$25,000	75	9	13	19	34	40	31	0	0	5	0	75	0	0	69	7
	7%	5%	6%	8%	8%	6%	11%	-	-	5%	-	47%	-	-	8%	4%
\$25,000 to under \$30,000	109	16	20	37	35	66	29	0	3	10	0	0	109	0	91	18
	10%	9%	10%	15%	9%	10%	10%	-	27%	11%	-	-	40%	-	11%	10%
\$30,000 to under \$40,000	160	30	41	48	40	97	40	2	2	19	0	0	160	0	131	29
	15%	17%	21%	20%	10%	15%	14%	3%	13%	20%	-	-	60%	-	15%	15%
\$40,000 and over	266	82	59	54	70	168	66	3	5	25	0	0	0	266	216	50
	26%	46%	30%	23%	17%	26%	24%	4%	38%	26%	-	-	-	100%	25%	27%
REFUSED NOT STATED	226	27	44	44	103	153	44	2	3	23	0	0	0	168	59	
	22%	15%	22%	18%	25%	24%	16%	27%	22%	24%	-	-	-	20%	31%	

ASK EVERYONE - WATCH QUOTAS: MALE/FEMALE

1. As you may know, the majority of people in South Africa are black but the country is ruled by a white minority government which practises the policy of Apartheid, a policy which treats people differently according to their race and colour. The Canadian Government has taken a number of actions to persuade South Africa to end Apartheid.

How familiar would you say you are with what the Canadian Government has done in response to the situation in South Africa? Would you say you are _____? [READ LIST AND CIRCLE ONE MENTION ONLY]

Very familiar ----- 1
Somewhat familiar ----- 2
Not very familiar ----- 3
Not at all familiar ----- 4

2. Based on what you have seen, read or heard do you believe that Canada _____? [READ LIST IN ROTATION ORDER INDICATED]

<u>ROTATE</u>	<u>YES</u>	<u>NO</u>
[] Bans arms sales to South Africa -----	1	A
[] Discourages sporting contacts between Canadian and South African athletes and teams -----	2	B
[] Gives financial and other assistance to victims of Apartheid in South Africa -----	3	C
[] Bans loans to companies in South Africa -----	4	D
[] Gives financial aid to South African organizations concerned about Apartheid -----	5	E
[] Pays the expenses of South Africans to come to Canada to speak to Canadians about what is going on in South Africa -----	6	F
[] Helps pay for the education of black South Africans in South Africa and in Canada -----	7	G

3. A number of major countries have taken action to put pressure on South Africa to end Apartheid. Based on what you may know about the actions of these countries, would you say that the actions taken by Canada are _____? [READ LIST AND CIRCLE ONE MENTION ONLY]

Much stronger ----- 1
Somewhat stronger ----- 2
About as strong ----- 3
Somewhat milder ----- 4
Much milder ----- 5

4. I am going to read to you two points of view and I would like you to tell me which one best reflects your own. [READ IN ROTATION ORDER INDICATED AND CIRCLE ONE MENTION ONLY].

ROTATE

- | | |
|--|---|
| [] Canada should have trade restrictions against South Africa in order to put pressure on the South African government to abandon the system of Apartheid ----- | 1 |
| [] Canada should not have trade restrictions against South Africa because restrictions hurt the blacks more than the South African Government ----- | 2 |

5. I am now going to read to you another two points of view and I would like you to tell me which one best reflects your own. [READ IN ROTATION ORDER INDICATED AND CIRCLE ONE MENTION ONLY]

CD
13

ROTATE

- [] Canada should continue its ban on Canadian athletes competing with South African athletes in order to put pressure on the South African Government to abandon the system of Apartheid --- 1
- [] Canada should lift its ban on Canadian athletes competing with South African athletes because politics should be left out of sports ----- 2

6. I am going to read to you some statements that people have made at one time or another about South Africa and Apartheid and I would like you to tell me whether you strongly agree, agree somewhat, neither agree nor disagree, somewhat disagree or strongly disagree with each of them. The first is _____ [READ FIRST STATEMENT IN ROTATION ORDER INDICATED AND ASK ALL STATEMENTS]

<u>ROTATE</u>	<u>STRONGLY AGREE</u>	<u>AGREE SOMEWHAT</u>	<u>NEITHER AGREE NOR DISAGREE</u>	<u>SOMEWHAT DISAGREE</u>	<u>STRONGLY DISAGREE</u>
[] Canada should give financial help to victims of Apartheid in South Africa ----- 1	1	2	3	4	5
[] The best way to speed up the end of Apartheid is to cut off all trade with South Africa ----- 1	1	2	3	4	5
[] The South African Government is putting an end to the system of Apartheid ----- 1	1	2	3	4	5
[] The Canadian Government should give money to help South Africans to come to Canada to tell Canadians what is going on in South Africa ----- 1	1	2	3	4	5
[] Canada should put more pressure on South Africa to end the system of Apartheid ----- 1	1	2	3	4	5
[] Canada should end its trade with South Africa even if this means some Canadians will lose their jobs ----- 1	1	2	3	4	5
[] Until major trading countries like the United States and Britain put real pressure on South Africa, there will be no end to Apartheid ----- 1	1	2	3	4	5
[] People in countries like Canada are not getting a true picture of what is happening in South Africa because the South African Government won't let reporters see what is going on ----- 1	1	2	3	4	5
[] Canada should give money to help black South Africans to go to University in South Africa and in Canada ----- 1	1	2	3	4	5

SKIP TO NEXT SECTION

SECTION APARTHEID

POUR TOUS - SURVEILLEZ LES QUOTAS: HOMMES/FEMMES

1. Comme vous le savez peut-être, la majorité de la population de l'Afrique du Sud est noire mais le pays est dirigé par un gouvernement minoritaire blanc pratiquant la politique de l'Apartheid, politique selon laquelle on accorde à une personne un traitement différent selon la race et la couleur de la personne. Le gouvernement canadien a pris plusieurs mesures dans le but d'exercer une pression sur l'Afrique du Sud pour qu'elle mette fin à l'Apartheid.

À quel point diriez-vous être au courant des mesures prises par le gouvernement canadien relativement à la situation en Afrique du Sud? Diriez-vous être _____ ? [LISEZ LA LISTE ET ENCERCLEZ UNE SEULE RÉPONSE]

- Très au courant ----- 1
 Assez au courant ----- 2
 Pas très au courant ----- 3
 Pas du tout au courant ----- 4

2. En vous basant sur ce que vous avez vu, lu ou entendu, croyez-vous que le Canada _____ ? [LISEZ LA LISTE SELON LA ROTATION INDIQUÉE]

<u>ROTATION</u>	<u>QUI</u>	<u>NON</u>
[] Interdit la vente d'armes en Afrique du Sud ----- 1	1	A
[] Interdit les rencontres sportives entre les athlètes et les équipes canadienne et sud-africains ----- 2	2	B
[] Offre de l'aide au niveau financier et autres aux victimes de l'Apartheid ----- 3	3	C
[] Interdit de faire des prêts aux compagnies de l'Afrique du Sud ----- 4	4	D
[] Offre un appui financier aux organismes sud-africains préoccupés par l'Apartheid ----- 5	5	E
[] Débourse les frais de sud-africains pour qu'ils viennent parler aux Canadiens au sujet de ce qui se passe en Afrique du Sud ----- 6	6	F
[] Aide à payer pour l'éducation des sud-africains noirs en Afrique du Sud et au Canada ----- 7	7	G

3. Plusieurs pays ont pris des mesures pour exercer une pression sur l'Afrique du Sud pour qu'elle mette fin à l'Apartheid. En vous basant sur ce que vous pouvez connaître relativement aux mesures prises par ces pays, diriez-vous que celles prises par le Canada sont _____ ? [LISEZ LA LISTE ET ENCERCLEZ UNE SEULE RÉPONSE]

- Beaucoup plus puissantes ----- 1
 Légèrement plus puissantes ----- 2
 À peu près aussi puissantes ----- 3
 Légèrement plus faibles ----- 4
 Beaucoup plus faibles ----- 5

4. Je vais vous lire deux points de vue et j'aimerais que vous me disiez quel est celui qui se rapproche le plus du vôtre. [LISEZ LA LISTE SELON LA ROTATION INDIQUÉE ET ENCERCLEZ UNE SEULE RÉPONSE]

[] Le Canada devrait imposer des restrictions commerciales contre l'Afrique du Sud afin d'exercer une pression sur le gouvernement sud-africain pour qu'il abandonne le système de l'Apartheid ----- 1	1
[] Le Canada ne devrait imposer aucune restriction commerciale contre l'Afrique du Sud parce que les restrictions sont plus néfastes pour les noirs que pour le gouvernement sud-africain ----- 2	2

5. Maintenant je vais vous lire deux autres points de vue et j'aimerais que vous me disiez quel est celui qui se rapproche le plus du vôtre. [LISEZ SELON LA ROTATION INDIQUÉE ET ENCEVREZ UNE SEULE RÉPONSE]

ROTATION

- [] Le Canada devrait continuer à interdire les athlètes canadiens à compétitionner avec les athlètes sud-africains, pour exercer une pression sur le gouvernement pour qu'il abandonne le système de l'Apartheid. ----- 1
- [] Le Canada devrait supprimer l'interdiction et permettre aux athlètes canadiens de compétitionner avec les athlètes sud-africains parce que la politique ne devrait pas intervenir dans les sports. ----- 2

6. Je vais vous lire quelques déclarations faites par différentes personnes à un moment ou un autre concernant l'Afrique du Sud et l'Apartheid et j'aimerais que vous me disiez si vous êtes tout à fait d'accord, légèrement d'accord, ni d'accord ni en désaccord, légèrement en désaccord ou tout à fait en désaccord avec chacun d'eux. Voici le premier [LISEZ LE PREMIER ÉNONCÉ SELON LA ROTATION INDIQUÉE ET DEMANDEZ POUR TOUS LES ÉNONCÉS]

	TOUT	LÉGÈ-	NI D'ACCORD	LÉGÈ-	TOUT
	À FAIT	REMENT	NI EN	REMENT	À FAIT
	<u>D'ACCORD</u>	<u>D'ACCORD</u>	<u>DÉSACCORD</u>	<u>DÉSACCORD</u>	<u>DÉSACCORD</u>

- | | | | | | |
|--|---|---|---|---|---|
| [] Le Canada devrait appuyer financièrement les victimes de l'Apartheid en Afrique du Sud ----- | 1 | 2 | 3 | 4 | 5 |
| [] Le meilleur moyen d'accélérer la disparition de l'Apartheid c'est de couper le commerce avec l'Afrique du Sud ----- | 1 | 2 | 3 | 4 | 5 |
| [] Le gouvernement sud-africain est en train de mettre fin au système de l'Apartheid ----- | 1 | 2 | 3 | 4 | 5 |
| [] Le gouvernement canadien devrait donner de l'argent afin d'aider les sud-africains à venir au Canada et dire au Canadiens ce qui se passe en Afrique du Sud ----- | 1 | 2 | 3 | 4 | 5 |
| [] Le Canada devrait exercer davantage de pression sur l'Afrique du Sud pour qu'elle mette fin au système de l'Apartheid ----- | 1 | 2 | 3 | 4 | 5 |
| [] Le Canada devrait rompre le commerce avec l'Afrique du Sud même au risque de faire perdre des emplois aux Canadiens ----- | 1 | 2 | 3 | 4 | 5 |
| [] A moins que les gros pays commerçants tels que les États-Unis et la Grande-Bretagne exercent une forte pression sur l'Afrique du Sud, l'Apartheid continuera à exister ----- | 1 | 2 | 3 | 4 | 5 |
| [] La population de pays comme le Canada ne sait pas vraiment ce qu'est la vraie situation en Afrique du Sud parce que le gouvernement sud-africain ne laisse pas les journalistes voir ce qui se passe ----- | 1 | 2 | 3 | 4 | 5 |
| [] Le Canada devrait donner de l'argent pour aider les sud-africains noirs à aller à l'université en Afrique du Sud ou au Canada ----- | 1 | 2 | 3 | 4 | 5 |

PASSEZ À LA SECTION SUIVANTE

LIBRARY E A/BIBLIOTHEQUE A E



3 5036 20096676 3

DOCS
CA1 EA 89T16 ENG
Tabular results : the apartheid
study
62444783