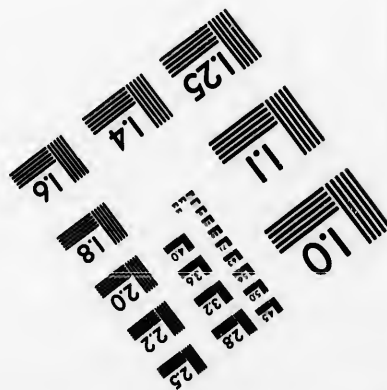
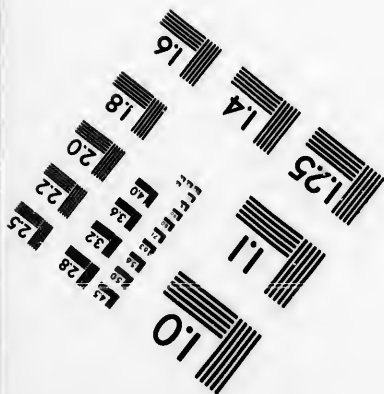
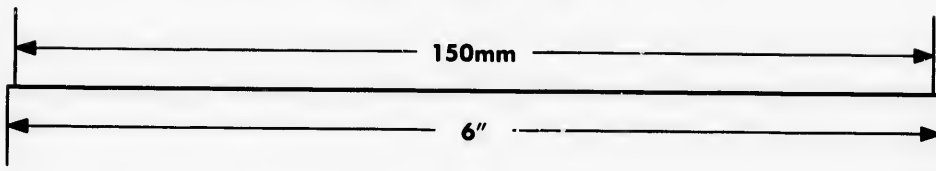
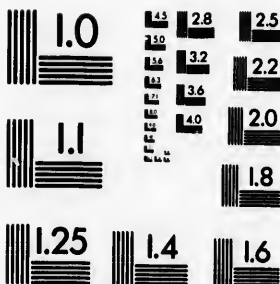
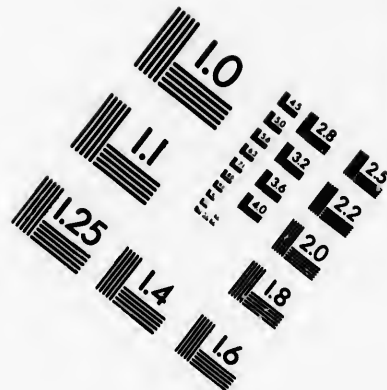
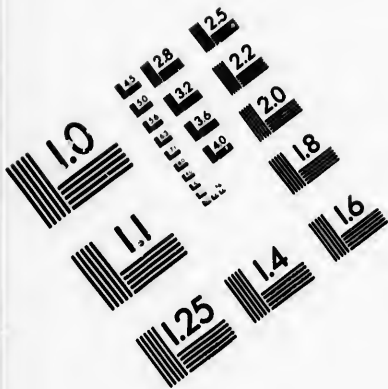


# IMAGE EVALUATION TEST TARGET (MT-3)



**APPLIED IMAGE, Inc**  
 1653 East Main Street  
 Rochester, NY 14609 USA  
 Phone: 716/482-0300  
 Fax: 716/288-5989

© 1993, Applied Image, Inc., All Rights Reserved

**CIHM  
Microfiche  
Series  
(Monographs)**

**ICMH  
Collection de  
microfiches  
(monographies)**



**Canadian Institute for Historical Microreproductions / Institut canadien de microreproductions historiques**

**© 1993**

Technical and Bibliographic Notes / Notes techniques et bibliographiques

The Institute has attempted to obtain the best original copy available for filming. Features of this copy which may be bibliographically unique, which may alter any of the images in the reproduction, or which may significantly change the usual method of filming, are checked below.

L'Institut a microfilmé le meilleur exemplaire qu'il lui a été possible de se procurer. Les détails de cet exemplaire qui sont peut-être uniques du point de vue bibliographique, qui peuvent modifier une image reproduite, ou qui peuvent exiger une modification dans la méthode normale de filmage sont indiqués ci-dessous.

- Coloured covers/  
Couverture de couleur
- Covers damaged/  
Couverture endommagée
- Covers restored and/or laminated/  
Couverture restaurée et/ou pelliculée
- Cover title missing/  
Le titre de couverture manque
- Coloured maps/  
Cartes géographiques en couleur
- Coloured ink (i.e. other than blue or black)/  
Encre de couleur (i.e. autre que bleue ou noire)
- Coloured plates and/or illustrations/  
Planches et/ou illustrations en couleur
- Bound with other material/  
Relié avec d'autres documents
- Tight binding may cause shadows or distortion  
along interior margin/  
La reliure serrée peut causer de l'ombre ou de la  
distorsion le long de la marge intérieure
- Blank leaves added during restoration may appear  
within the text. Whenever possible, these have  
been omitted from filming/  
Il se peut que certaines pages blanches ajoutées  
lors d'une restauration apparaissent dans le texte,  
mais, lorsque cela était possible, ces pages n'ont  
pas été filmées.
- Additional comments: /  
Commentaires supplémentaires:

- Coloured pages/  
Pages de couleur
  - Pages damaged/  
Pages endommagées
  - Pages restored and/or laminated/  
Pages restaurées et/ou pelliculées
  - Pages discoloured, stained or foxed/  
Pages décolorées, tachetées ou piquées
  - Pages detached/  
Pages détachées
  - Showthrough/  
Transparence
  - Quality of print varies/  
Qualité inégale de l'impression
  - Continuous pagination/  
Pagination continue
  - Includes index(es)/  
Comprend un (des) index
- Title on header taken from: /  
Le titre de l'en-tête provient:
- Title page of issue/  
Page de titre de la livraison
  - Caption of issue/  
Titre de départ de la livraison
  - Masthead/  
Générique (périodiques) de la livraison

This item is filmed at the reduction ratio checked below/  
Ce document est filmé au taux de réduction indiqué ci-dessous.

10X	12X	14X	16X	18X	20X	22X	24X	26X	28X	30X	32X
<input type="checkbox"/>	<input type="checkbox"/>	<input type="checkbox"/>	<input type="checkbox"/>	<input type="checkbox"/>	<input type="checkbox"/>	<input checked="" type="checkbox"/>	<input type="checkbox"/>	<input type="checkbox"/>	<input type="checkbox"/>	<input type="checkbox"/>	<input type="checkbox"/>

The copy filmed here has been reproduced thanks to the generosity of:

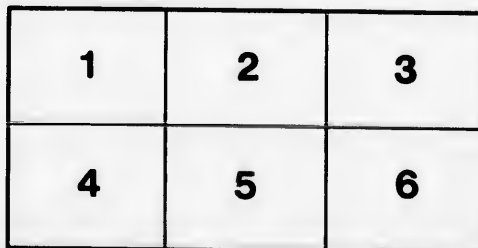
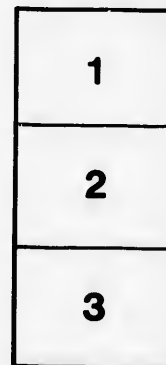
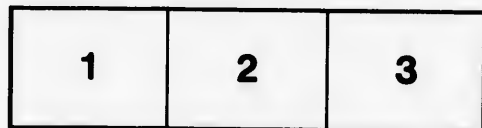
National Library of Canada

The images appearing here are the best quality possible considering the condition and legibility of the original copy and in keeping with the filming contract specifications.

Original copies in printed paper covers are filmed beginning with the front cover and ending on the last page with a printed or illustrated impression, or the back cover when appropriate. All other original copies are filmed beginning on the first page with a printed or illustrated impression, and ending on the last page with a printed or illustrated impression.

The last recorded frame on each microfiche shall contain the symbol  $\rightarrow$  (meaning "CONTINUED"), or the symbol  $\nabla$  (meaning "END"), whichever applies.

Maps, plates, charts, etc., may be filmed at different reduction ratios. Those too large to be entirely included in one exposure are filmed beginning in the upper left hand corner, left to right and top to bottom, as many frames as required. The following diagrams illustrate the method:



L'exemplaire filmé fut reproduit grâce à la générosité de:

Bibliothèque nationale du Canada

Les images suivantes ont été reproduites avec le plus grand soin, compte tenu de la condition et de la netteté de l'exemplaire filmé, et en conformité avec les conditions du contrat de filmage.

Les exemplaires originaux dont la couverture en papier est imprimée sont filmés en commençant par le premier plat et en terminant soit par la dernière page qui comporte une empreinte d'impression ou d'illustration, soit par le second plat, selon le cas. Tous les autres exemplaires originaux sont filmés en commençant par la première page qui comporte une empreinte d'impression ou d'illustration et en terminant par la dernière page qui comporte une telle empreinte.

Un des symboles suivants apparaîtra sur la dernière image de chaque microfiche, selon le cas: le symbole  $\rightarrow$  signifie "A SUIVRE", le symbole  $\nabla$  signifie "FIN".

Les cartes, planches, tableaux, etc., peuvent être filmés à des taux de réduction différents. Lorsque le document est trop grand pour être reproduit en un seul cliché, il est filmé à partir de l'angle supérieur gauche, de gauche à droite, et de haut en bas, en prenant le nombre d'images nécessaire. Les diagrammes suivants illustrent la méthode.

MIN  
ROOM



# 98A  
\$ 45.

# Gaspesia Railway Company of Canada.

---

## COMPARATIVE STATEMENT OF DISTANCES

(Land and Marine)

BETWEEN

Montreal, Halifax and New York,

AND

MOVILLE, QUEENSTOWN AND LIVERPOOL.

---

Würtele, Lessard & Co.  
PRINTERS,  
1488 NOTRE DAME ST., MONTREAL.

HE 2810

G3

G3

M

Qu

Mo

Qu

Qu

Poi

Que

Que

Que

Que

Poin

# Gaspesia Railway Company of Canada.

## COMPARATIVE STATEMENT

### OF DISTANCES

(Land and Marine)

BETWEEN

Montreal, Halifax and New York;

AND

MOVILLE, QUEENSTOWN AND LIVERPOOL.

#### QUEBEC ROUTE.

<i>Via</i> BELLE ISLE.	Nautical Miles.
Quebec to Moville.....	2474
Moville to Liverpool.....	187
Quebec to Liverpool.....	2661
Deduct therefrom—	
Quebec to Point St. Pierre, ocean terminus of Gaspesia Railway.....	369
Point St. Pierre to Liverpool, <i>via</i> Belle Isle.....	2292 N'l. Miles.
Quebec to Queenstown.....	2501
Queenstown to Liverpool.....	209
Quebec to Liverpool.....	2710
Deduct—	
Quebec to Point St. Pierre, Gaspesia Railway.....	369
Point St. Pierre to Liverpool, <i>via</i> Belle Isle.....	2341 N'l Miles.



**Via CAPE RACE.**

Quebec to Merville.....	2565
Merville to Liverpool.....	187
	<hr/>
Quebec to Liverpool.....	2752
Deduct—	
Quebec to Point St. Pierre.....	369
	<hr/>
Point St. Pierre to Liverpool, <i>via</i> Cape Race....	2383 N'l. Miles.
	<hr/>
Quebec to Queenstown .....	2592
Queenstown to Liverpool .....	209
	<hr/>
Quebec to Liverpool.....	2801
Deduct—	
Quebec to Point St. Pierre.....	369
	<hr/>
Point St. Pierre to Liverpool, <i>via</i> Cape Race....	2432 N'l. Miles.
	<hr/>

### HALIFAX ROUTE.

Halifax to Merville.....	2155
Merville to Liverpool.....	187
Halifax to Liverpool.....	2342
Point St. Pierre to Liverpool, <i>via</i> Belle Isle and Merville, as above.....	2292

Difference in favor of Point St. Pierre  
to Liverpool ..... 50 N'l. Miles.

Halifax to Queenstown.....	2182
Queenstown to Liverpool.....	209
Halifax to Liverpool.....	2391
Point St. Pierre to Liverpool, <i>via</i> Belle Isle and Queenstown, as above.....	2341

Difference in favor of Point St. Pierre  
to Liverpool..... 50 N'l. Miles.

Halifax to Merville and Liverpool, as above .....	2342
Point St. Pierre to Liverpool, <i>via</i> Cape, Race and Merville, as above.....	2383

Difference in favor of Halifax Route..... 41 N'l. Miles.

N. B.—This will give 2 hrs. 3 min. sailing time in favor of Halifax route ; but, as shown hereinafter, the present railway route from Montreal to Halifax, *via* G. T. R. and I. C. R., is 311 miles and 13 hrs. 5 min. time, and *via* C. P. R. short line is 209 miles and 7 hrs. 25 min. time, LONGER than would be by Railway from Montreal to Point St. Pierre, viz: 547 miles and 18 hrs. 5 min. time. This time. Montreal to Point St. Pierre, could be still further reduced to 11 hours.

Halifax to Queenstown and Liverpool, as above.....	2391
Point St. Pierre to Liverpool, <i>via</i> Cape Race and Queenstown, as above.....	2432

Difference in favor of Halifax Route..... 41 N'l. Miles.

N. B.—Same remarks as above.

l. Miles.

l. Miles.

### NEW YORK ROUTE.

New York to Sandy Hook..... 18  
 Sandy Hook to Liverpool.....3130

New York to Liverpool.....3148  
 Point St. Pierre to Liverpool, *via* Cape  
 Race..... 2383

Difference in favor of Point St. Pierre,  
 Gaspesia Railway..... 765 N'l. Miles.

New York to Liverpool, as above.....3148  
 Point St. Pierre to Liverpool, *via* Belle  
 Isle .....2292

Difference in favor of Point St Pierre,  
 Gaspesia Railway..... 856 N'l. Miles.

Taking Montreal as the central point for Passenger and  
 Mail Traffic, we find :

Montreal to Halifax, *via* G. T. R. and I. C. R. 858 Miles.

Running Time, per Official Time Tables..... 31 hrs. 10 min.

Montreal to Halifax, *via* C. P. R. short line  
 through Maine, U. S., New Brunswick  
 and Nova Scotia.....756 Miles.

Running Time, per Official Time Table.....25 hrs. 30 min.

Montreal to Point St. Pierre, *via* G. T. R.,  
 I. C. R. and Gaspesia Railway..... 547 Miles.

Thus—

Montreal to Levis, G. T. R.....172 Miles ; Time, 6 hrs 25 min.

Levis to St. Octave, I. C. R.....203 " " 6 " 40 "

St. Octave to Point St. Pierre,  
 Gaspesia Railway.....172 " " say 5 " 00 "

Total.....547 " " 18 hrs. 05 min.

Difference of Mileage and Time, between Montreal and Halifax, via G. T. R. and I. C. R., and Montreal and Point St. Pierre, Gaspesia Railway, in favor of latter route.....311 Miles ; Time, saved, 13 hours 05 min.

Difference between Montreal and Halifax, via C. P. R. short line, and in favor of Montreal and Point St. Pierre, Gaspesia Railway.....209 Miles ; Time saved, 7 hrs. 25 min.

N'l. Miles.

The above noted time between Montreal and Point St. Pierre, the projected terminus of the Gaspesia Railway for transfer of passengers and mails; could be reduced by an average running speed of 50 miles an hour; thereby making the full run within eleven hours (11hrs.)

N'l. Miles.

At present the Canadian Mail Steamers, during navigation of the St. Lawrence, transfer Passengers and Mails at Rimouski, which port is 213½ nautical miles further inland than Point St. Pierre, and entails a sail, averaging 14 hours longer.

enger and

358 Miles.

9. 10 min.

The distance by I. C. R. and Gaspesia Railway, from Rimouski to Point St. Pierre, will be 23 miles and 172 miles respectively, in all 195 miles. This time could therefore be reduced by average running of 50 miles an hour, to 3 hours 54 min., instead of 14 hours of sailing—a gain of 10 hrs. 6 min. in favor of the Gaspesia Railway.

756 Miles.

s. 30 min.

It has been established above that the Gaspesia Railway to the Point St. Pierre terminus will be the shortest possible railway route to the sea-board.

547 Miles.

At Point St. Pierre there are unequalled facilities for constructing wharves and piers into deep water, which would make it not only a summer port, but, without doubt, a winter port as well. Observations taken during the last two winters have confirmed what the oldest seafaring residents of the district and others have always asserted; that navigation could be carried on at that part of the Gulf of St. Lawrence all the year round.

s 25 min.

40 "

' 00 "

. 05 min.

The following calculations are submitted, which are based on a fast ocean service of 20 nautical miles an hour:—

### GASPESIA RAILWAY ROUTE.

*Via MOVILLE.*

Montreal to Point St. Pierre, <i>via</i> G. T. R., I. C. R. and Gaspesia Railway, 547 miles, at 50 miles an hour.....	11 hrs.
Point St. Pierre to Merville, <i>via</i> Belle Isle, 2105 nautical miles, at 20 n. miles per hour .....	4 ds. 9 hrs. 15 min.
Montreal to Merville .....	4 ds. 20 hrs. 15 min.
Merville to Liverpool, 187 n. miles.....	10 hrs.
Montreal to Liverpool, <i>via</i> Belle Isle and Merville.....	5 ds. 6 hrs. 15 min.
Montreal to Point St. Pierre, as above...	11 hrs.
Point St. Pierre to Merville, <i>via</i> Cape Race, 2196 n. miles, at 20 n. miles per hour.....	4 ds. 13 hrs. 48 min.
Montreal to Merville.....	5 ds. 00 hrs. 48 min.
Merville to Liverpool, 187 n. miles.....	10 hrs.
Montreal to Liverpool, <i>via</i> Cape Race and Merville.....	5 ds. 10 hrs. 48 min.

Via QUEENSTOWN.

Montreal to Point St. Pierre, as above...	11 hrs.
Point St. Pierre to Queenstown, <i>via</i> Belle Isle, 2132 n. miles, at 20 n. miles per hour.....	4 ds. 10 hrs. 36 min.
Montreal to Queenstown.....	4 ds. 21 hrs. 36 min.
Queenstown to Liverpool, 209 n. miles...	12 hrs.
Montreal to Liverpool, <i>via</i> Belle Isle and Queenstown.....	5 ds. 9 hrs. 36 min.
Montreal to Point St. Pierre, as above...	11 hrs.
Point St. Pierre to Queenstown, <i>via</i> Cape Race, 2223 n. miles, at 20 n. miles hour.....	4 ds. 15 hrs. 09 min.
Montreal to Queenstown.....	5 ds. 2 hrs. 09 min.
Queenstown to Liverpool.....	12 hrs.
Montreal to Liverpool, <i>via</i> Cape Race...	5 ds. 14 hrs. 09 min.

submitted.  
vice of 20

hrs.

hrs. 15 min.

hrs. 15 min.  
hrs.

hrs. 15 min.

hrs.

hrs. 48 min.

hrs. 48 min.  
hrs.

hrs. 48 min.

## HALIFAX ROUTE.

*Via MOVILLE.*

Montreal to Halifax, <i>via</i> G. T. R. and C. P. R., 858 miles.....	1 dy. 7 hrs. 10 min.
Halifax to Merville, 2165 n. miles, at 20 n. miles per hour.....	4 ds. 12 hrs. 15 min.
Montreal to Merville, <i>via</i> Halifax.....	5 ds. 19 hrs. 25 min.
Merville to Liverpool, 187 n. miles.....	10 hrs.
<hr/>	
Montreal to Liverpool, <i>via</i> Halifax and Merville.....	6 ds. 5 hrs. 25 min.
Montreal to Liverpool, <i>via</i> Point St. Pierre, Belle Isle and Merville, as above.....	5 ds. 6 hrs. 15 min.
<hr/>	
Difference in favor of Point St. Pierre Route.....	23 hrs. 10 min.
<hr/>	
Montreal to Halifax and Liverpool, as above.....	6 ds. 5 hrs. 25 min.
Montreal to Liverpool, <i>via</i> Point St. Pierre, Cape Race and Merville, as above.....	5 ds. 10 hrs. 48 min.
<hr/>	
Difference in favor of Point St. Pierre Route.....	18 hrs. 37 min.
<hr/>	
Montreal to Halifax, <i>via</i> C. P. R. short line, 756 miles.....	1 dy. 1 hr. 30 min.
Halifax to Merville, 2165 n. miles, at 20 n. miles per hour.....	4 ds. 12 hrs. 15 min.
Montreal to Merville.....	5 ds. 13 hrs. 45 min.
Merville to Liverpool, 187 n. miles.....	10 hrs.
<hr/>	
Montreal to Liverpool, <i>via</i> Halifax and Merville.....	5 ds. 23 hrs. 45 min.
Montreal to Liverpool, <i>via</i> Point St. Pierre, Belle Isle and Merville, as above.....	5 ds. 6 hrs. 15 min.
<hr/>	
Difference in favor of Point St. Pierre Route.....	17 hrs. 30 min.

Montreal to Halifax and Liverpool, as above.....	5 ds. 23 hrs. 45 min.
Montreal to Liverpool, <i>via</i> Point St. Pierre, Cape Race and Merville, as above.....	5 ds. 10 hrs. 48 min.
Difference in favor of Point St. Pierre Route.....	<u>12 hrs. 57 min.</u>

*Via* QUEENSTOWN.

Montreal to Halifax, <i>via</i> G. T. R. and C. P. R. 858 miles.....	1 day 7 hrs. 10 min.
Halifax to Queenstown, 2182 n. miles, at 20 miles per hour.....	4 ds. 13 hrs. 06 min.
Queenstown to Liverpool, 209 n. miles.....	12 hrs.
Montreal to Liverpool, <i>via</i> Halifax....	6 ds. 08 hrs. 16 min.
Montreal to Liverpool <i>via</i> Point St. Pierre, Belle Isle and Queenstown, as above.....	5 ds. 09 hrs. 36 min.
Difference in favor of Point St. Pierre Route.....	<u>22 hrs. 40 min.</u>

Montreal to Halifax and Liverpool, as above.....	6 ds. 8 hrs. 16 min.
Montreal to Liverpool, <i>via</i> Point St. Pierre, Cape Race and Queens- town, as above.....	5 ds. 14 hrs. 09 min.
Difference in favor of Point St. Pierre Route.....	<u>18 hrs. 07 min.</u>



Montreal to Halifax, <i>via</i> C. P. R. short route, 756 miles.....	1 day 1 hr. 30 min.
Halifax to Queenstown, as above, 2182 n. miles.....	4 ds. 13 hrs. 6 min.
Queenstown to Liverpool, 209 n. miles	12 hrs.
<hr/>	
Montreal to Liverpool, <i>via</i> Halifax.....	6 ds. 02 hrs. 36 min.
Montreal to Liverpool, <i>via</i> Point St. Pierre, Belle Isle and Queenstown, as above.....	5 ds. 09 hrs. 36 min.
<hr/>	
Difference in favor of Point St. Pierre Route.....	17 hrs.
<hr/>	
Montreal to Halifax and Liverpool, as above .....	6 ds. 02 hrs. 36 min.
Montreal to Liverpool, <i>via</i> Point St. Pierre, Cape Race and Queenstown, as above.....	5 ds. 14 hrs. 09 min.
<hr/>	
Difference in favor of Point St. Pierre Route.....	12 hrs. 27 min.

### NEW YORK ROUTE.

3130 nautical miles to Liverpool.

Taking the *best* eastern record, made by the "City of New York" in August 1892:

From New York to Sandy Hook.....	5 hrs.
Sandy Hook to Queenstown.....	5 ds. 19 hrs. 57 min.
<hr/>	
New York to Queenstown.....	6 ds. 00 hrs. 57 min.
Queenstown to Liverpool.....	12 hrs.
<hr/>	
New York to Liverpool.....	6 ds. 12 hrs. 57 min.
<hr/>	
Montreal to Liverpool, <i>via</i> Belle Isle and Queenstown, as above .....	5 ds. 09 hrs. 36 min.
<hr/>	
Montreal to Liverpool, <i>via</i> Cape Race and Queenstown as above.....	5 ds. 14 hrs. 09 min.

1 hr. 30 min.

3 hrs. 6 min.

2 hrs.

hrs. 36 min.

hrs. 36 min.

hrs.

hrs. 36 min.

hrs. 09 min.

hrs. 27 min.

City of New

hrs.

hrs. 57 min.

hrs. 57 min.

hrs.

hrs. 57 min.

hrs. 36 min.

hrs. 09 min.

We have, therefore, in comparison with the New York route, a difference in favor of the Gaspesia Railway and trans-Atlantic route, from Point St. Pierre, *via* Belle Isle, of 1 day 3 hrs. 21 min., and *via* Cape Race of 22 hrs. 48 min., without taking into consideration the time of travelling and expense thereof, incurred by passengers from outside of New York, and the delay in waiting tidal hours and otherwise.

Whereas *via* the Gaspesia Railway no delays could occur, as the passengers and mails could be transferred at any hour of the day all the year round. The trains would take passengers to and from the steamer's side at Point St. Pierre.

Passengers from New York to Queenstown, by taking the Canadian route, including the railway travel, would save 14 hrs. 21 min. of time, and have a sea voyage of 4 ds. 10 hrs. 36 min. only, instead of 6 ds. 0 hrs. 57 min. by steamer from New York.

**For example.**

Best record, "City of New York," New

York to Queenstown, August 1892...6 days 0 hrs. 57 min.

Railway, New York to Montreal, D. & H.

R. R. time..... 13 hrs.

Montreal to Point St. Pierre..... 11 hrs.

Steamer, Point St. Pierre to Queenstown. 4 ds. 10 hrs. 36 min.

5 ds. 10 hrs. 36 min.

Difference, from New York to Queens-  
town, in favor of Route *via* Montreal

and Point St. Pierre..... 14 hrs. 21 min.

### BAY OF CHALEURS RAILWAY.

The Bay of Chaleurs Railway, when completed between Metapedia and Gaspé Basin, will have a length of **180 miles**; its connection between Metapedia and St. Octave station of I. C. R., the starting point of the Gaspesia Railway, will be **87 miles** in length; and from St. Octave to Montreal, *via* I. C. R. and G. T. R., the distance is **376 miles**, making in all **643 miles**.

From Montreal to Point St. Pierre, *via* G. T. R., I. C. R. and the Gaspesia Railway, is **547 miles**; consequently the Bay of Chaleurs route is **96 miles longer** to Montreal than the Gaspesia Railway route.

ced between  
**180 miles;**  
e station of  
will be **87**  
al, *via* I. C.  
king in all

I. C. R. and  
tly the Bay  
al than the

