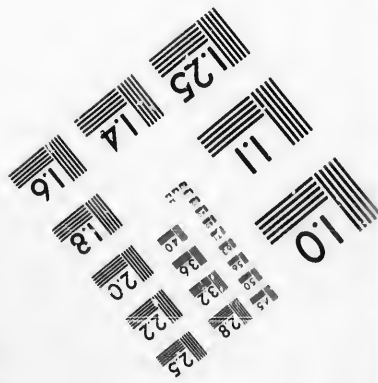
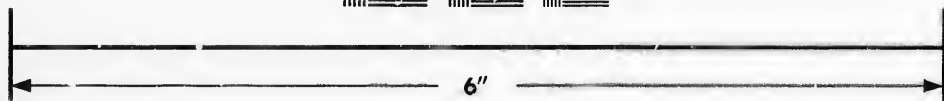
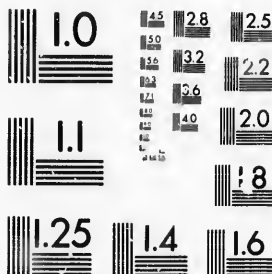


**IMAGE EVALUATION  
TEST TARGET (MT-3)**



Photographic  
Sciences  
Corporation

23 WEST MAIN STREET  
WEBSTER, N.Y. 14580  
(716) 872-4503

14  
16  
18  
20  
22  
24  
25

**CIHM/ICMH  
Microfiche  
Series.**

**CIHM/ICMH  
Collection de  
microfiches.**



Canadian Institute for Historical Microreproductions / Institut canadien de microreproductions historiques

10  
11

**© 1987**

Technical and Bibliographic Notes/Notes techniques et bibliographiques

The Institute has attempted to obtain the best original copy available for filming. Features of this copy which may be bibliographically unique, which may alter any of the images in the reproduction, or which may significantly change the usual method of filming, are checked below.

L'Institut a microfilmé le meilleur exemplaire qu'il lui a été possible de se procurer. Les détails de cet exemplaire qui sont peut-être uniques du point de vue bibliographique, qui peuvent modifier une image reproduite, ou qui peuvent exiger une modification dans la méthode normale de filmage sont indiqués ci-dessous.

- Coloured covers/  
Couverture de couleur
- Covers damaged/  
Couverture endommagée
- Covers restored and/or laminated/  
Couverture restaurée et/ou pelliculée
- Cover title missing/  
Le titre de couverture manque
- Coloured maps/  
Cartes géographiques en couleur
- Coloured ink (i.e. other than blue or black)/  
Encre de couleur (i.e. autre que bleue ou noire)
- Coloured plates and/or illustrations/  
Planches et/ou illustrations en couleur
- Bound with other material/  
Relié avec d'autres documents
- Tight binding may cause shadows or distortion  
along interior margin/  
La reliure serrée peut causer de l'ombre ou de la  
distorsion le long de la marge intérieure
- Blank leaves added during restoration may  
appear within the text. Whenever possible, these  
have been omitted from filming/  
Il se peut que certaines pages blanches ajoutées  
lors d'une restauration apparaissent dans le texte,  
mais, lorsque cela était possible, ces pages n'ont  
pas été filmées.
- Additional comments:/  
Commentaires supplémentaires:

- Coloured pages/  
Pages de couleur
- Pages damaged/  
Pages endommagées
- Pages restored and/or laminated/  
Pages restaurées et/ou pelliculées
- Pages discoloured, stained or foxed/  
Pages décolorées, tachetées ou piquées
- Pages detached/  
Pages détachées
- Showthrough/  
Transparence
- Quality of print varies/  
Qualité inégale de l'impression
- Includes supplementary material/  
Comprend du matériel supplémentaire
- Only edition available/  
Seule édition disponible
- Pages wholly or partially obscured by errata  
slips, tissues, etc., have been refilmed to  
ensure the best possible image/  
Les pages totalement ou partiellement  
obscurcies par un feuillet d'errata, une pelure,  
etc., ont été filmées à nouveau de façon à  
obtenir la meilleure image possible.

This item is filmed at the reduction ratio checked below/  
Ce document est filmé au taux de réduction indiqué ci-dessous.

10X	12X	14X	16X	18X	20X	22X	24X	26X	28X	30X	32X
				✓							

The copy filmed here has been reproduced thanks to the generosity of:

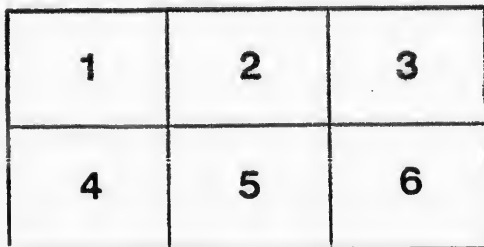
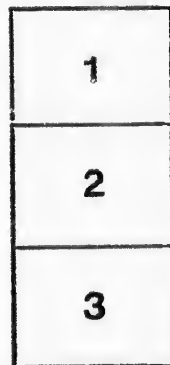
Metropolitan Toronto Library  
Canadian History Department

The images appearing here are the best quality possible considering the condition and legibility of the original copy and in keeping with the filming contract specifications.

Original copies in printed paper covers are filmed beginning with the front cover and ending on the last page with a printed or illustrated impression, or the back cover when appropriate. All other original copies are filmed beginning on the first page with a printed or illustrated impression, and ending on the last page with a printed or illustrated impression.

The last recorded frame on each microfiche shall contain the symbol  $\rightarrow$  (meaning "CONTINUED"), or the symbol  $\nabla$  (meaning "END"), whichever applies.

Maps, plates, charts, etc., may be filmed at different reduction ratios. Those too large to be entirely included in one exposure are filmed beginning in the upper left hand corner, left to right and top to bottom, as many frames as required. The following diagrams illustrate the method:



L'exemplaire filmé fut reproduit grâce à la générosité de:

Metropolitan Toronto Library  
Canadian History Department

Les images suivantes ont été reproduites avec le plus grand soin, compte tenu de la condition et de la netteté de l'exemplaire filmé, et en conformité avec les conditions du contrat de filmage.

Les exemplaires originaux dont la couverture en papier est imprimée sont filmés en commençant par le premier plat et en terminant soit par la dernière page qui comporte une empreinte d'impression ou d'illustration, soit par le second plat, selon le cas. Tous les autres exemplaires originaux sont filmés en commençant par la première page qui comporte une empreinte d'impression ou d'illustration et en terminant par la dernière page qui comporte une telle empreinte.

Un des symboles suivants apparaîtra sur la dernière image de chaque microfiche, selon le cas: le symbole  $\rightarrow$  signifie "A SUIVRE", le symbole  $\nabla$  signifie "FIN".

Les cartes, planches, tableaux, etc., peuvent être filmés à des taux de réduction différents. Lorsque le document est trop grand pour être reproduit en un seul cliché, il est filmé à partir de l'angle supérieur gauche, de gauche à droite, et de haut en bas, en prenant le nombre d'images nécessaire. Les diagrammes suivants illustrent la méthode.

rrata  
to

pelure,  
n à



32X

63 +  
**CATALOGUE**

OF

**FRUIT & ORNAMENTAL TREES,**

**Flowering Shrubs,**

**GARDEN SEEDS AND GREEN-HOUSE PLANTS,**

**BULBOUS ROOTS & FLOWER SEEDS,**

CULTIVATED AND FOR SALE AT THE

**TORONTO NURSERY.**

*Dundas Street, near York,*

---

BY

**WILLIAM W. CUSTEAD.**

---

—  
**YORK:**

Printed by William Lyon Mackenzie, Printer to the House of Assembly.

1827.

741

Agents for receiving orders.



- MR. JESSE KETCHUM.....*York.*
- MR. BENJAMIN BARNARD.....*Richmond Hill.*
- MR. GEORGE LOUNT.....*Gwillimbury.*
- MR. STEVENS.....*Esquesing.*
- MESSRS. LESSLIE & SONS.....*Dundas.*
- MR. JAMES CRYSLER, (Merchant) *Niagara.*
- MR. WYNN.....*Queenston.*
- MR. JONES.....*Near Cobourg.*
- MR. JOHN SMITH.....*Fort Hope.*
- MR. ....*Guelph.*
- MR. ABRAHAM ERR.....*Waterloo.*
- MR. CHARLES INGORSOLL.....*Oxford.*
- MR. LEMING.....*Lewiston.*

## PREFATORY REMARKS.

---

THIS establishment was commenced in 1811 by the proprietor's raising a few trees for his own use, and would perhaps never have been thought of, had there not been such a difficulty in obtaining good kinds by purchase.

Finding his efforts crowned with success and the business delightful, he resolved to extend his nursery, and devote the most part of his time to it, not only from a consideration of the pleasure and advantage he might himself derive, but also from a desire of placing the bountiful gifts of nature within the reach of his friends and neighbours.

It will be seen by the catalogue, that my greatest attention has hitherto been paid to apple trees, because I considered the apple the most congenial fruit to this climate, and the most useful in new countries: there is now in the nursery nearly 20,000 apple trees, the greater part of which are grafted or inoculated with the best and most approved European and American kinds, and are from one to seven years old, and from one to nine feet high. Gentlemen by calling at the nursery can select for themselves---no difference is made in price on account of age or size.

The nursery business is attended with difficulties and disappointments which ought carefully to be guarded against; mistakes are often made in the proper names of trees, plants &c. by the ignorant and careless, to the great mortification of the purchaser. I have been disappointed in this way myself, but the public may rest assured that the greatest care will be taken to prevent such disagreeable occurrences in this establishment, all the business is done by my own hands and I will be accountable for all mistakes of my own making, but there is one cause of disappointment with which the nursery-man has nothing to do, and for which he is often unjustly blamed. A person gets a fine apple and enquires its name---a wrong one is given, he sends to the nursery and gets trees by this wrong name---after

careful culture the fruit appears, and is not what he expected : to prevent disappointments of this kind a person should be very certain that he has got the proper name of his favourite fruit, before he orders trees from the nursery.

From many experiments I am fully persuaded that the fall is the best time for transplanting fruit trees--the work may be performed any time from the middle of October until the ground freezes.

Transplanting in the spring often succeeds well also, and may be begun as soon as the frost is out of the ground, which often happens before the snow is quite gone, by which means persons in the new settlements have an opportunity of bringing out produce and returning with fruit trees, before the roads break up : spring planting may be continued to the first of May. Produce delivered at the nursery, will be taken from the new settler for trees &c. at cash prices.

The best season for removing bulbous flower roots is from July to October inclusive.

Greenhouse plants may be removed at any time when the weather is warm.

When fruit trees &c. are ordered from a distance they will be carefully packed in boxes or matts so as to arrive safe in any part of the Canadas or the adjoining states ; in this case a small additional charge will be made for package.

Every thing in my line will be delivered at York free of carriage, and every kind kept by itself, tied together, and labelled.

Scions of fruit trees for grafting packed in the most secure and portable manner at two shillings per dozen, no less than half that number can be furnished of any one kind. The prices will in no case exceed those of the nurseries at New York, and in general will be found one third less.

The proprietor has appointed agents through the country, of whom catalogues may be had, and by whom orders will be received and forwarded, it is expected that gentlemen at a distance sending orders otherwise than through an agent, will name some person in York who will be responsible for the payment.

Purchasers residing in York or its vicinity or within the same distance of the nursery in any other direction, may have trees planted and insured for a limited time, on such terms as may be agreed upon, taking into consideration the number of trees wanted and the distance from the nursery.

An allowance equal to ten per cent will be made to those who purchase by the quantity at the nursery.



Very considerable additions have been lately made to this establishment by importations from some of the foremost nurseries and seed shops in the United States and in England, and it is intended that neither pains nor cost shall be spared in making annual additions of such trees, shrubs, plants &c. either ornamental or useful as may best agree with our climate.

The proprietor embraces with pleasure the present opportunity of returning his thanks to those gentlemen who have fostered his establishment by presents of plants, seeds, &c. which perhaps he could not otherwise have obtained: to his customers he is grateful for former favours, and hopes to render his nursery still more worthy of *public patronage*.

WILLIAM W. CUSTEAD.

---

### DIRECTIONS FOR PLANTING FRUIT TREES.

In planting out trees, let the hole be dug sufficiently large to admit the roots in their natural position; particular attention should be paid, that all the wounded parts of the roots are cut off; if a hard marly soil, it would be advisable to have the hole much larger than is required to receive the roots. Then fill in good earth from the surface up to the proper height. Before introducing the tree especially if tall it is advisable to drive down a stake, placing the tree close to it on the north east side to which let the tree be securely tied after planting. Care must be observed not to plant the trees too deep; the upper roots when planted, should have about three inches of earth over them, which will generally make it about two inches deeper than it stood in the nursery. Fill in the hole with rich mould, and if required, some well rotted manure. After covering the roots, shake the tree, that the earth may be admitted among all the small roots; then fill up, treading round the tree, leaving a basin round it to conduct the water to the roots. In dry seasons, watering will be of service: the head of the tree should be cut off in proportion to the size, say one third though not until May. Much of their doing well depends upon attending to this.

I would recommend to those planting out young trees, to keep the ground cultivated for a few years in succession. From observation, I have found that trees thrive much better in cultivated ground, than if planted in grass or uncultivated: a few

years, say four or five, of cultivation, will richly pay the planter. as the trees in that time will generally get in a thrifty growing state: after which they will only require ordinary care.--- Experience has proved the utility of soft soap to trees, and I highly recommend the washing of the bodies and branches, as high as can be conveniently got at, of all sorts of fruit trees.--- The soap may be diluted with water, to the consistency of thick paint, and applied with a brush. The effect is very evident, making the bark smooth and pliable, trees thrifty, destroying any small insects that may be feeding on the sap, to which the apple and the pear tree are particularly subject.

---

### DIRECTIONS TO PRESERVE PEACH TREES IN A HEALTHY STATE.

Let every tree which has been known to produce its fruit prematurely, be immediately removed; and if it is desired to have a peach tree planted in the same place where a diseased tree has been removed from, let a large hole be dug, so as to remove all the roots, that the roots of the new planted tree may not, in one season, come in contact with them. But new ground is to be taken, in preference to that on which peach trees have been. Let the greatest attention in summer, be paid to the ripening of the fruit, and where fruit is found to ripen two, three or four weeks before the usual time, you may conclude that the tree has taken the infection; and as it gives you notice one whole season previous to its power of spreading the contagion, you can, by removing it, prevent its injuring the other trees; or if the tree has taken the infection when in blossom, and has lost its fruit before it ripened, it will show that it has become diseased, by pushing out small slender shoots, and frequently in bunches of a pale yellow colour, from the body and branches; and by observing the same appearance on those trees that have ripened their fruit prematurely, you will soon be able to distinguish the trees that are diseased, from those which are in a healthy state, and by removing them before they blossom, prevent their spreading the infected farina.

Ashes and lime, a small quantity placed as near the trunk of the tree as possible, have been used with good effect, in preventing and destroying the worms at the roots of peach trees. Tobacco leaves and stems, put round the trunks of peach trees

at the roots, have also been found beneficial in destroying the worms, as well as preventing their getting in the trees.

To have thrifty peach trees, and fine fruit, the ground should every year be kept cultivated, by planting it with corn, potatoes, or other vegetables, and every autumn or spring, have some rotten manure dug in round the trees. Peach trees remaining more than one year in grass or soil ground, become unthrifty and yellow, it is therefore easier to distinguish the diseased from healthy, in cultivated ground.

N. B. To those that order fruit trees &c. who are not acquainted with the different sorts of fruits by name, I would recommend that their orders specify the number of the different species of trees wanted, and leave the selection to me, as in all such cases I should feel myself bound to send none but what I know to be of approved sorts, and that ripen in succession, or as may be requested.

ay the plan-  
thrifty grow-  
ary care.---  
trees, and I  
branches, as  
fruit trees.---  
nsistency of  
t is very evi-  
thrifty, des-  
the sap, to  
subject.

PEES IN A

duce its fruit  
is desired to  
re a diseased  
ug, so as to  
planted tree  
n. But new  
which peach  
mer, he paid  
and to ripen  
ou may con-  
it gives you  
spreading the  
uring the oth-  
n in blossom,  
w that it has  
oots, and fre-  
ne body and  
nce on those  
ou will soon  
, from those  
n before they  
na.  
e the trunk of  
t, in prevent-  
n trees. To-  
f peach trees

# CATALOGUE.

## APPLE TREES,

1s. 3d. each except otherwise marked.

No.	when ripe.	No.	when ripe.
1	Yellow Harvest--July & Aug.	27	Proud Pippin, do.
2	Small Early, do.	The fruit of the 2 last will keep from Oct. to Jany.	
3*	Early Red Streak, do.	28	Land's Fine Yellow, Oct.
4	Coult's Early, do.	29	Small's Russet, do.
5*	Juneting, do.	30	Winter Codlin, large, do.
6	Early Sweet Bough, do.	31	Black Vandevere, fine flavor
7	Sweet Pippin, Sept.	32*	English Crab, Oct.
8	Gaitzor, very soft and a great bearer, do.	33*	Wine Apple, do.
9	English Codlin, Oct.	The last 6 will keep from Oct. to February,	
10	Yellow Pippin, very fine cooking apple, do.	34†	Seedless Pippin, Oct.
11	None Such, do.	35	Red Streak Vandevere, do.
12	Summer Sweeting, large & fine, do.	36†	Hertfordshire Red Streak, do.
13*	Mammoth Apple, do.	37†	Seek no Further, do.
14*	Lemon or Orange Pippin do.	38†	Harrison's Apple do.
15*	Large fair soft & white, do.	39†	Bell Flower, do.
16*	Large Green Streaked, do.	Last 6 will keep from Oct. to March.	
17*	Large Green Sweet, do.	40	Ribston's Stone Pippin, Oct.
[15, 16 & 17 are very fine fruits from Mr. Cooper's famous Orchard, not having the proper names at present I have given this description.]		41	King Apple, do.
18	Large Fall Pippin, Oct.	42	May Bloom, do.
19	Farmer's Profit, do.	43	Queen's Apple, do.
20	Spitzenburgh Yellow, do.	44	Nonpareil, do.
21	Holland Pippin, do.	45	Davenport Gooseberry, do.
22*	Rose Apple, do.	Last 6 will keep from Oct. to April.	
23*	Russet, large and fine, do.	46†	English Pearmain, do.
24	White Russet, do.	47	Bambo or Romanites, very fine, do.
25	McKay's Apple, fine, do.	48	Spitzenburgh Red, do.
26	Snow Apple, do.	49	Barussau's Apple from L. C.
		50	Winter Pearmain, Oct.
		51	Red Pippin, do.

No.	when ripe.	No.	when ripe.
52 Spitzenburgh,	Oct.	79 Double Flowering Chinese--	when ripe.
Last 4 will keep from Oct. to	to	said to be the most beautiful	
May.		of flowering trees---price 2s.	
53 Talman's Sweeting,	do.	Several choice varieties of the	
54 Rhode Island Greening,	do.	Apple will be cultivated on Pa-	
55† Black Apple,	do.	radise stocks for dwarfs or es-	
56† Jelly Flower Apple,	do.	paliers at 2s. each.	
Last 4 will keep from Oct.	Oct.		
to June.			
57† Green Everlasting,	do.	<b>PEAR TREES.</b>	
58† Red Everlasting,	do.	1s. 10d. each except otherwise	
59† Millar's Long Keeping,	do.	marked.	
It is said these last 3 will keep		1 Early Musk,	July.
a year.		2† Chaumontelle M.	August.
60 Golden Pippin,	Oct.	3 Jargonelle M.	do..
61 French Crab,	do.	4† Cuisse Madame M.	Sept.
62† English Russeting,	do.	5 Summer Bon Cretion,	Aug.
63 Hopkin's New Sown Pippin,	do.	6 Skinless M.	do.
64 Phoenix Apple,	Oct.	7† Early Catharine,	do.
65 Small's Best Keeping,	do.	8 Great Mouthwater M.	Sept.
66† Golden Russeting,	do.	9 Late Catharine M.	do.
67† Green New Sown Pippin,	do.	10† English Red Cheek M	do.
68† Montrous Pippin, very large		11 Large Bell M. (fine)	do.
69† Yellow New Town Pippin,	do.	12 Red Butter Pear M.	do.
70† Cart House or Gilpin,	Oct.	13† Seckle Pear,	Oct.
71† Hugh's Virginia Crab, do.		14† Cap Sheaf M.	do.
72† Tewksbury Winter Blush,		15 Cresane M.	Deer.
Last 13 will keep from Oct. to	Oct.	16 Rushmore M.	do.
June.		17 Colmar M.	Deer. & Jan.
73† Pennock's large Red Win-		18 King's Bon Cretion M. fm.	
ter, will keep from Nov. to		Deer. to March.	
April.		19 Vergalue, M.	Oct.
74† Wine Sap, keep from Oct.		20 St. Germain M. fm.	Deer.
to January,		to April.	
75 Paradise Apple, very dwarf,		21 Pound Pear B.	Deer.
fruit of no estimation.		22 Winter Bon Cretion B. fm.	
76 Siberian Crab,		Jan'y to April.	
77 Cherry Crab----these are		23† Orange Red,	Augu
both ornamental and useful,		24† Green Chissel M.	do.
valuable for preserves.		25 Small Bergamot,	Oct.
78† Paradise Apple---tree small,		A few choice varieties of the	
fruit large and fair---price 2s.		above will be propagated on	
		Quince stocks at 2s. 6d.	

M. signifies melting pears.  
B. baking do.

No. when ripe.  
6 Ox Heart, do.

**PLUMS.**

At 2s. each except otherwise marked.

No.		when ripe.
1*	Early Scarlet or Myrobolans S.	July.
2	Yellow Gage S.	August.
3*	Purple Gage S.	do. & Sept.
4*	New Green, or Flushing Gage L. & S.	3s. 9d. do.
5	Red Orleans L.	do.
6	Little Black Denmark S.	do.
7*	Bolmar's Washington, L. & S.	3s. 9. Sept.
3*	Smith's Orleans L. & S.	do.
9*	Drap's D'or, or cloth of Gold S.	do.
10	Yellow Egg or White Magnum Bonum L.	do.
11*	Cooke's Large, double the size of the Egg Plum,	do.
12*	Fotheringham,	do.
13	St. Catharine,	do.
14*	Cooper's Large Red,	do.
15	Large Blue,	do.
16*	Green Gage S.	do.
17	Red Magnum Bonum L.	do.
	L signifies large.	
	S superior flavour.	
	L & S large size and superior flavour.	

**CHERRIES.**

2s. 6d. each except otherwise marked.

1	May Duke,	June.
2.	White Heart,	do.
3	Black Heart,	do.
4	Carnation,	do.
5	Kentish,	1s. 3d. do.

**PEACHES.**

1s. 3d. each.

1	Red Rare Ripe,	August.
2	White Rare Ripe,	do.
3	Yellow or Red Cheek Malagatune,	do.
4	Columbia,	do.
5	Old Newington, cling	do.
6	Noblesse,	[stone. do.
7	Lemon Peach,	do.
8	York Toland	do.
9	Orange, cling stone.	do.

**NECTARINES.**

1s. 3d. each.

1	Early Yellow,	Sept.
2	Temple,	do.
I would recommend that Peaches and Nectarines be planted in a dry and sheltered situation, and by no means in a rich soil---My Peaches and Nectarines will not be fit for transplanting until the fall of 1828.		

**GRAPES.**

1†	Early White,	price 1s. 9d.
2†	Boston Sweet Water,	do.
3	Bland's Virginia,	do.
4†	Isabella Grape,	do.
5	White's Sweet Water,	1s. 3d.
6	Jersey Grape,	do.
7†	Black Frontenac,	1s. 9d.
8	French Chocolate,	2s. 6d.
Grapes require an open sunny situation and some protection in the winter.		

**CURRANTS.**

1s. each except otherwise

when ripe.  
do.

ES.  
ch.  
August.  
do.  
Cheek

do.  
do.  
cling do.  
[stone. do.  
do.  
do.  
stone. do.

INES.  
ach.  
Sept.  
do.  
commend that  
ectarines be  
and sheltered  
no means in a  
ches and Nec-  
fit for trans-  
fall of 1928.

ES.  
price 1s. 9d.  
Water, do.  
do.  
do.

Water, 1s. 3d

do.  
do.

ac, 1s. 9d.  
late, 2s. 6d.

a open sunny  
ome protecti-

NTS.  
t otherwise

marked.

- 1 Red,
- 2 White,
- 3 Black,
- 4† Large Dutch Red, 1s. 3d.
- 5† do. White. do.
- 6† Large Champagne Red, do.
- 7† Lewis' Fragrant, 2s.

**GOOSEBERRIES.**

1s. each.

- 1 Smooth Green, green.
- 2 Rough Green, do.
- 3 Green Gascoign, do.
- 4 Reed's Satisfaction, do.
- 5 Large Amber, Red,
- 6 Royal Oak, do.
- 7 Farmers' Glory, do.
- 8 Rambouin, do.
- 9 Ironmonger, do.
- 10 Golden Globe, Yellow.
- 11 Hercules, do.
- 12 Livingstone, Large White.

Gooseberries require a deep rich soil and regular pruning.

**RASPBERRIES.**

- 1 English White, price 7½d
  - 2 English Red, 6d
  - 3 Large White Antwerp, 1s.
- each or 7s 6d. per dozen.

**STRAWBERRIES.**

- 1 Hautboy, price 1s. per doz.
- 2† Large Hudson, do. do. do.
- 3† Alpin Monthly, 2s. per doz.

**ORNAMENTAL TREES.**

1s. each.

- 1 Lombardy Poplar,
- 2 Yellow or Ship Locust,
- 3 Black Walnut,
- 4 Honey Locust or 3 thorned

Acacia,  
5 Glutinous Acacia or Italian

- Locust,
- 6 American Chestnut,
- 7 Horse Chestnut,
- 8 New England Walnut, or Hickory,
- 9 Mountain Sole,
- 10 Yellow Willow,
- 11 Sleeping Willow, 1s. 3d.
- 12 Catalpha, do.

**FLOWERING SHRUBS.**

1s. each.

- 1 European Syringo,
  - 2 Hypericum Frutex.
  - 3 Snowy Medlar,
  - 4 English Linden,
  - 5 Large Cole Nut,
  - 6 English Filbert—these last two are good and productive Nuts,
  - 7 Cranberry Tree or Mountain Viburnum,
  - 8 Candleberry Myrtle,
  - 9† Red double flowering Althea Frutex, 1s. 3d.
  - 10† Single Red do. 1s.
  - 11† Single White do. do.
  - 12 Snow Ball or Gilder Rose† 1s. 3d.
  - 13 Purple Lilac, 1s.
  - 14 White do. do.
  - 15† Purple Persian Lilac, 2s.
  - 16 Brown Flowering Calycanthus, do.
  - 17 Calycanthus or sweet scented shrub, 1s. 3d.
  - 18† English Passion Flower, 2s.
  - 19 Bladder Sena, 1s.
  - 20† Mezerion, do.
  - 21† Clethra, do.
- Barberry,

22 Strawberry Tree,	1s.	Italian Spiderwort
23 Scarlet trumpet flower- ing Creeper,	do.	Purple Fox Glove,
24 Laburnam,	do.	White Fox Glove,
25 Red berried spindle tree do.		Tarragon,
26 Pyracantha or Ever Green Thorn,	do.	Chamomile,
27 † Double flowering Al- mond	do.	Rose Campion,
28 Venitian Sumack	1s. 3d.	Black Antwerp Holyhuck,
29 † European Hawthorn,	do.	Double Yellow, do.
30 † St. John's Wort,	1s.	Double Chinese, do.
31 French Tamarisk,	do.	Snap Dragon,
32 Southern Wood,	do.	Double Columbine, 5 varie- ties,
33 English Nightshade,	do.	Caledonian Thistle.
34 Periwinkle or ever Green Myrtle,	do.	Blue Canterbury bell purple.
35 Rose Acacia,	do.	White do. do.
36 New Jersey Tea.	2s.	Ribband Grass.
		Wall Flower,
		† Sweet scented Virgin's Bow- er, 2s.

### HONEYSUCKLES.

Early sweet Italian,  
English White,  
Scarlet Monthly Trumpet,  
English Woodbine,  
Striped Monthly,  
Variegated leaved.

### BIENNIALS & PERENNIALS.

Ornamental and useful.

Price 7½d each, except  
otherwise marked.

Double crimson Peony,  
Tart Rhubarb, 2s.  
† Turkey Rhubarb, do.  
Leeks,  
Shallots & Scives,  
Hops,  
Sage,  
Wormwood,  
Hysop.  
Purple Perennial Convolv-  
-lus,  
Dyers' Madder,

† Virginian, do. 1s.  
† Traveller's Joy, 2s.  
† Dahlies from 2s. to 5s.  
Pinks, Fine, Double, Various  
Colours 1s.  
Broad Leaved,  
Pheasant eyed,  
Chinese,  
† Clove,  
† French Honeysuckle,  
Sweet Rocket,  
Moss Pink.  
Everlasting Pea,  
Scarlet Lychnis,  
† Scarlet Cardinal Flower,  
Blackberry Lily,  
Iris, or Flower De Luce,  
large Purple German.  
— Dwarf Purple,  
Polyanthus, many varieties,  
1 shilling,  
Cowslip.  
English Daisy,  
† English Primrose,



- † White Sophora, 1s.
- † Blue do. do.
- White Broom,
- Yellow do.

**RUE.**

- Asparagus, 5s. per hundred,
- Capus Spurge,
- Crimson Menardi,
- Maryland Cassa.

**ROSES.**

- † Moss Rose, 5s.
- † Rosa Multifloræ or Gar- 2s.
- land,
- Thornless, 1s. 3d.
- Burgundy, 1s.
- Double Velvet, 1s. 6d.
- Red Damask, do.
- Copper Coloured, do.
- Cabbage Rose, do.
- † Rosa Mundi varigated, 1s. 3.
- † Hundred Leaved, do.
- Large Provence, 2s.
- Rose of Sharon, 3s. 9d.
- White Monthly, 1s.
- Crimson Dwarf, do.
- Maidens' Blush, do.
- Portland Rose, 1s. 3d.
- Large Crimson, do.
- † Mottled Rose, do.
- † Michigan Rose, do.
- Single White do. do.
- Double do. do.
- Sweet Briar, do. 1s.

**BULBOUS ROOTS.**

**TULIPS.**

- Briggette---Bizarre. 1s. 3d.
- Queen of England---
- Rosy and White, 4s.
- Duke of Richmond---
- Bizarre, 1s. 3d.

- Chailon New--Bizarre, 1s. 3d.
- Perfecta---Parrot, 2s.
- Yellow Crown, 1s. 9d.
- Pain d'Epice, 1s. 3d.
- Dw Van Toll---dble. do.
- Duc de Boufflers' Bibloem, do.
- Prince Kaiel---dble. 2s.

- Queen of the Moors--Bib: 2/6
- Violette ma favorite 3s.
- Grand Tamerlane--Bib: 1/3
- Prosperine---dble. 2s.
- Blanc Corde bleu---dble. 1/3
- Courone d' Or---dble. do.
- Rose Agatha, 4s.
- Duc d'Holstien, early. 1s. 3d.
- Adml. Kingsbergin---dble. 2s
- Yellow Rose---dble. 1s. 3d.
- Claremond---early do.
- Prince Maurity--Bib: do.
- Grand Alexander--dble. 1/6
- Tucarnate grisdelin--dble. 1/3
- La Fidelle---dble. 1s. 3d.
- This assortment of Fine Tu-  
lips in 25 varieties may be  
had for 40s. being less than  
the N. York prices for the  
same.

**HYACINTHS.**

- Passe tout blue. 1s. 3d.
- Prince Henri de Prussia blue 2s
- La Rosse Blue, 1s. 9d.
- Duc de Berri Yellow, do.
- Phoenix Red, do.
- La Fidelle Red, 1s. 6d.
- Rose Sarre Red,
- Rose Surpassant Pink, 1s. 3d.
- Nannette White, 1s. 9d.
- Prince Wm. Frederick, white 5s
- Don Gratuit, white. 1s. 9d.
- Belle ferme, do. do.
- This assortment of 12 double  
hyacinths may be had for 40s.  
being less than the New York

prices for the same.

**NARCISSUS.**

- Double Narcissus--daffodil, 7½d
- do. Orange Phoenix, do.
- do. Albo pleno oderato, do.

**LILIES.**

- White Lily, 7½d.
- Yellow day Lily, 1s.
- Sword Lily, 7½d.
- Lily of the Valley, 7½d.
- † Martigon or Turk's cap, 1s.
- Jonquils, from 7½d. to 1s.
- † Amaryllis in sorts, do. do.
- † Ranunculies in sorts, 1s.
- † Anemonies in sorts, do.
- Tube Roses double, 7½d.

**GREENHOUSE PLANTS.**

- China ever blooming roses, several varieties price 2/6 each.
- American Century Aloe, some varieties, price 3s.
- Coloured Indian Fig, 3s. 9d.
- Indian Fig, 3s. 9d.
- Creeping Cereus, 3s. 9d.
- Silver leaved Wormwood, 3/9
- Rosemary, 2s.
- Chinese Chrysanthemum, 2/6
- Carnations several varieties, 2s. to 3s. 9d.
- Stock Jilly-flowers 6 varieties, 2s. each.
- Wall Flower, 2s.
- Scarlet & Blush Horse Shoe Geraniums, 2s. each.
- Silver edged, do. 3s. 9d.
- Rose scented, do. 2s.
- Strawberry leaved, do. 2s.
- Sweet scented, do. 2s.
- Oak Leaved Geranium, 2s.
- Jerusalem Cherry, 2s.

- Multiflora Rose, 2s. 6d.
- Chinese Changeable Hydrangea, 2s. 6d.

- † Guernsey Lily,
- † Broad leaved Myrtle,
- † Box do. do.

All of which will thrive in a comfortable sitting room during winter, they are in either Pots or Boxes, and the prices are inclusive.

**SEEDS OF ESCULENT VEGETABLES, & plants in their season.**

- CABBAGE.** Early York,
- do. Heart shaped.
- Savory,
- Drumhead,
- Red Dutch,
- CELERY,** White Solid,
- do. Rose Coloured,
- PARSNIPS,** Hollow Crowned,
- CARROTS,** Early Horn,
- do. Long Orange,
- do. Blood Red,
- BEETS,** Blood Red,
- do. White or scarcity,
- TURNIPS,** Common Field,
- do. Swedish or Rutabaga.
- do. French.
- ONIONS,** Red,
- do. White,
- do. Top or Tree,
- LEEKS,** London,
- BEANS,** Early Mohawk, } **Dwarfs.**
- do. Six Week, }
- do. Dunn, }
- do. Chioce, }
- BRANS**—Pale white or cream coloured,
- Purple Cranberry,
- Scarlet Runners,
- White Dutch do.

2s. 6d.  
eable  
2s. 6d.

ryrtle,  
do.  
thrive in a  
ing room du-  
y are in ei-  
xes, and the  
ive.

ENT VEGETA-  
their season.  
Work,  
heart shaped.

ead,  
utch,  
Solid,  
Coloured,  
v Crowned,  
Horn,  
Orange,  
Red,  
Red,  
or scarcity,  
on Field,  
n or Rutabaga.

Tree,  
n,  
Mohawk, }  
Six Week, }  
Dunn, }  
Chince, }  
nite or cream  
ired,  
ranberry,  
ummers,  
utch do.

Dwarfs.

BEANS-Asparagus or y<sup>r</sup>d long  
Brussels sprouts,  
Asparagus  
PEAS---Early Frame,  
do. Hotspur,  
Dwarf Green,  
Prussian Blue,  
Dwarf Prolific, or Strawberry,  
Knight tall Marrow, or  
Honey pea, extra fine  
Tall Grey Sugar,  
Dwarf Sugar or White,  
PARSLEY---Curled or double,  
Hamburgh or large rooted,  
Nasturtium, a fine pickle,  
Egg Plant, Purple,  
do. do. White,  
Mustard White or English.  
Cress or Pepper Grass,  
Salsify or Vegetable Oyster,  
PEPPER---Long or Cayenne.  
Tanatoo Shaped,  
Cherry Shaped,  
SPINAGE---Prickly or Fall,  
Round leaved,  
Sorrel English or Garden.  
SQUASH---Early Bush,  
do. Crook Neck,  
Large Green do.  
Tomatoo or Love Apple.  
LETTUCE---Early,  
Long leaved or Cabbage,  
Ice Coos,  
Brown Dutch,  
Grand Admiral.  
CUCUMBERS, Early Frame,  
" Long Prickly,  
" Short "  
" Serpentine,  
Pine Apple,  
MELONS,  
" Nutmeg,  
" Paradise,  
" Green Citron,

MELONS, Burnet,  
POTATOES, English White,  
" Some other choice  
varieties,  
Indian Corn & Grass Seeds.  
RADISH, Short topt scarlet.  
" Black fall.

POT & SWEET HERB SEEDS.

Carraway,  
Marygold,  
Sweet Basil,  
Sweet Marjorum,  
Anise,  
Common Sage,  
Red Sage,  
Summer Savory,  
Thyme,  
Lemon Thyme,  
Nutmeg, good substitute for  
spice,  
Tarragon.

MEDICINAL HERB SEEDS.

Marsh Mallows,  
Sweet Fennel,  
Dill,  
Saffron,  
Cucumder,  
Purple Fox Glove,  
Moldavian, or Lemon Balm.  
Hvesop.  
Elecampane,  
Dyers' Wood,  
Lovage,  
Horehound,  
Balm,  
White Official Poppy,  
Palma Christi,  
Rue,  
Virginian Speedwell,

Bene,  
Comfrey.

ANNUAL FLOWER SEEDS.

Flos Adones,  
Princes' Feather,  
China Aster, White,  
" " Purple,  
" " Blush or Rose,  
" " Red striped,  
" " Purple striped,  
" " Red,  
" " Mixed all colors,  
Sweet Sultan Purple,  
" " White,  
Cock's Comb Red,  
" " Yellow,  
" " Crimsen velvet,  
Chrysanthemum White,  
" " Yellow,  
Job's Tears,  
Convolvulus Minor, White,  
" " Pale Red,  
" " Major, Purple,  
" " Pink,  
" " White,  
" Blue & White striped,

Lark's Spur, large Purple,  
Hyacinth Bean, Purple,  
Horn Poppy,  
Globe Amaranthus, Purple,  
Balsamine, Fine double,  
Cyprus Vine,  
Sweet Peas,  
Broboscis Flower,  
Caterpillar's Flower,  
Snail Flower,  
Ice Plant,  
Sensitive Plant,  
Marvel of Peru,  
Scarlet Flowering, Havan-  
ah Tobacco.  
Love in a Mist,  
Evening Primrose,  
Carnation Poppy,  
Scarlet Flowering Bean,  
Red Persicaria,  
Sweet scented Trefoil, .  
African Marygold, Orange  
" " Quilled.  
Heart's Ease.  
Mexican Ximensia,

Trees and Plants marked \* † ‡ throughout this Catalogue,  
will not be a proper size for transplanting until the Autumn of  
1828.

*FINIS.*

Mackenzie printer

# APPENDIX.

The following **BULBOUS ROOTS** and **PLANTS** are ordered from New York, and will be for sale as soon as they can be increased.

<b>CROWN IMPERIALS.</b>	Yellow striped,	1s.
Chapeau de Prince, yellow	Black,	do.
	Scarlet Turban.	do.
Crown upon Crown, red	<b>ANEMONES.</b>	
Sang de boeuf,	Double rosy & crimsoned,	1s.
Yellow Striped,	red and pink,	do.
Pileus Cardinal's, crim-	dark blue,	do.
son,	white,	do.
<b>TURK'S CAP LILIES.</b>	scarlet.	1s. 3d.
Caligula Scarlet,	<b>CROCUSES.</b>	
Crown of Tunis, pur-	Cloth of Gold,	6d.
ple,	Garland,	do.
Crown of Jerusalem,	Large white,	do.
Grand Duke, yellow,	yellow,	do.
King of Prussia,	blue,	do.
<b>AMARYLLIS.</b>	pink,	do.
Jacobean Lily,	Satisfaction.	do.
Guernsey,	<b>ROSES.</b>	
Atamaseo,	York and Lancaster,	3s. 9d.
Yellow flowering,	Pearl of the East,	do.
<b>JONQUILS.</b>	Striped Monthly,	do.
Double Fragrant,	Great Mogul,	7s. 6d.
Large Single,	Bromley Rose,	2s. 6d.
Small Fragrant,	Rose de Pomponne,	3s. 9d.
<b>RANUNCULUS.</b>	King of Rome,	9s.
Orange,	Frankfort,	2s.
Bright Crimson,	Unique white Provence,	7s. 6d.
Bright red and pink,		
Yellow,		

To the GREEN-HOUSE list, please to add the following:

---

Rosa Semperflorens, palida Odorata,	3s. 9d.
Rosa Indica Rubra,	3s. 9d.
Myrtle leaved Geranium,	2s. 6d.
Balm scented,	2s. 6d.
Pennyroyal or rash leaved,	2s. 6d.
Pyrus Japonica or scarlet flowering Ja-pan Apple,	7s. 6d.
Striped Rose Bay,	7s. 6d.
Starry Hydrangea,	2s.
Oak leaved do.	2s.
Hortensis do.	2s. 6d.
Frost Plant,	2s.
Nutmeg scented,	2s. 6d.
Balm scented,	2s. 6d.

