

# THE COMMERCIAL

FINANCE AND INSURANCE REPORT

Subscription, \$3.00 per Annum in Advance.

Established 1882.

Published Weekly.

Vol. 20

WINNIPEG, CANADA JANUARY 4, 1901.

No. 18

To all our Friends and Patrons and those who should be our Patrons, we wish

A . . .  
**Happy and Prosperous New Year**

**HERRICK, ANDERSON & Co.**  
WINNIPEG

**FLOUR**

HIGHEST AWARDS at home and abroad:

WINNIPEG EXHIBITION, PARIS EXPOSITION.

**HUDSONS BAY COMPANY**



INCORPORATED AD 1870

The flour manufactured by the Hudson's Bay Company has received the Grand Prix at the Paris Exhibition and the highest awards at the Winnipeg Industrial Exhibition. All the flour made by the company is from specially selected wheat.

**HUDSONS BAY COY**

Manufacturers of

**Denim Pants  
Overalls  
Shirts and  
Smocks**

Of All Descriptions

Mail Orders Receive Prompt Attention

**THE EMERSON-HAGUE  
MANUFACTURING CO. Ltd.**  
WINNIPEG

**\* CODVILLE & CO.**  
Wholesale Grocers.



—Packers of—

**CELEBRATED GOLD STANDARD TEAS**  
Coffee, Baking Powder and Spices.

**BANNATYNE AVE. E., WINNIPEG**  
Branches: BRANDON and CALGARY.

**BROMLEY & Co.**



Tents  
Mattress  
Factory

Cor. Princess and Alexander St., Winnipeg

HEADQUARTERS FOR THE FOLLOWING:  
PIPES, BUTTONS, PLAYING CARDS, MOUTH ORGANS, PERFUMES, COLLAR BUTTONS AND CUFF BUTTONS, RINGS AND GENTS' CHAINS, and complete Stock of Smallwares. Wholesale Only.

**J. McLEOD HOLIDAY**  
173 McDermott St. Winnipeg

**THOS. RYAN**

Wholesale . .  
**BOOTS and  
SHOES**

**For the Holiday Trade**

Everything required in Footwear, Felt Boots, Moccasins, Socks, Hair-Lined Larrigans, Mitts and Gloves, Rubbers and Overshoes.

ORDERS RESPECTFULLY SOLICITED

**Fall, 1902**

Our travellers are out with new samples.

**MITTS AND GLOVES,  
MOCCASINS,  
ARCTIC SOCKS,  
FELT SOLE SHOES,  
AND SLIPPERS.**

The very latest in them all at the very lowest prices. Please see our line before placing orders.

**THE AMES HOLDEN CO. Ltd.**

WINNIPEG.

WRITE US

When  
You  
Want  
Fruit



When  
You  
Have  
Produce

WHOLESALE FRUITS AND PRODUCE

**Hosiery**

Our Spring Display is the outcome of an effort to combine in one splendid collection the latest and best ideas of Canadian, English and German manufacturers. We submit the results confident that for breadth of range, exclusiveness and superiority of value the collection will be found without a rival.

Our 600 X Cashmere to retail—25c.  
Our 604 X Cashmere to retail—60c.  
**ARE EYE-OPENERS.**

**The Gault  
Bros. Co. Ltd.**

**IMPORTERS and  
MANUFACTURERS**

MONTREAL WINNIPEG VANCOUVER

See our  
Advertisements  
on Pages  
416 and 417

**R. J. WHITLA  
& CO. Ltd.** Wholesale  
Dry Goods  
WINNIPEG

**THE RUBLEE  
FRUIT CO. Limited**

Importers of .  
**Foreign and Domestic  
Green and Dried  
Fruits, Nuts, Etc.**

191 Bannatyne Street, WINNIPEG, MAN.  
12th Street, BRANDON, MAN.

**Protect the Eyes**

From Drifting and Blinding Snow with

**THE TEXAS EYE SHIELD**



Wholesale by

**McALLISTER & WATTS**  
43 Borie St., Winnipeg.  
Next of Post Office.

**WINNIPEG  
Business College**  
Cor. Postage Ave. and Fort St.  
**PREPARE**

For the active duties of a business life by taking a course at the Winnipeg Business college. Annual catalogue sent free to any address.

G. W. DONALD, Secretary.

# From Ocean to Ocean

We extend Holiday Greetings  
to all our  
Customers and Friends

WINNIPEG  
CALGARY  
NELSON  
VANCOUVER

## J. Y. GRIFFIN & CO.

Pork Packers and Commission Merchants

# Finnan Haddie

400 boxes due to arrive January  
2nd. How many can we book  
you for?

## R. A. ROGERS & COMPANY Ltd.

WINNIPEG

F. D. ROE, President

R. ABERNETHY, Vice-President

T. F. PATERSON, Sec.-Treas.

# The Canadian Pacific Lumber Company Limited



Manufacturers of and Wholesale  
Dealers in all Classes of  
British Columbia

LUMBER, LATH,  
SHINGLES,  
MOULDINGS, Etc.

MANAGER

PORT MOODY, B.C.

CAPACITY: LUMBER 60,000 feet per Day; LATH 20,000; SHINGLES 120,000.

We have the largest dry kiln capacity of any mill in B.C.; also the largest amount of sheds, and these are well stocked with Manitoba lumber. We have seven planers and are prepared to ship promptly. We understand the requirements of Manitoba dealers. Send to us for your next car. BYRNES & CAMPBELL, Selling Agents, Winnipeg.

# Quick Puddings

Prepared in  
a jiffy



- Chocolate
- Custard
- Arrowroot
- Raspberry
- Strawberry
- Pineapple
- Orange
- Lemon

Quick Sellers too!!



# PURE GOLD CO.

TORONTO

TH  
The  
partic  
on C  
arly  
of M  
the T  
Tw  
Sub  
\$2.25  
\$2.50  
China  
about  
morning  
Adver  
matter,  
opinion  
settled.  
The C  
such in  
use con  
between  
cost th  
daily of  
reaches  
tion, m  
of leav  
office  
WINN  
The y  
markab  
em Out  
enjoyed  
develop  
been me  
year op  
pects fo  
riots, or  
of 1909  
reord s  
pect gr  
this situ  
great ad  
and as it  
of the p  
most ab  
has been  
brought  
to thous  
The in  
just year  
gration o  
the Unit  
a contin  
segment  
This ind  
the south  
country.  
They hav  
prairie re  
lucky M  
them hav  
The con  
way com  
with the  
Superior  
year. (19  
opportu  
in many  
Land so  
The Can  
sales for  
of about  
This is an  
ennialy.  
In Winn  
ided exp  
sitation, a  
near 100  
with \$14  
year, whic  
dex to the  
THE  
The ann  
this week  
Railway el  
were pract  
It was a fo  
short time

## THE COMMERCIAL

The recognized authority on all matters pertaining to trade and progress in Western Canada, including the part of the territory of Lake Superior, the Province of British Columbia, and the Territories.

Tenthly Year of Publication.

ISSUED EVERY SATURDAY.

Subscriptions—Canada and the United States, \$2.00 per annum in advance. Outside of these not so paid; other countries, \$2.50 in advance.

Changes for advertisements or stops should be made not later than Thursday morning.

Advertisements purporting to be news matter or which profess to express the opinion of this journal, will not be inserted.

The Commercial certainly enjoys a very large circulation among the business community of the west region lying between Lake Superior and the Pacific coast than any other paper in Canada, daily or weekly. The Commercial also reaches the leading wholesale, commission, manufacturing and financial houses of Eastern Canada.

Office 210 McDermott St. Telephone 224.

D. W. BUCHANAN, Publisher.

WINNIPEG, JANUARY 4, 1902.

### THE YEAR.

The year 1901 has been one of remarkable expansion throughout western Canada. While all Canada has enjoyed a year of general prosperity, development and advancement has been more marked in the West. The year opened with not the best prospects for the great prairie grain districts, owing to the fact that the crop of 1900 was about the poorest on record in the country beyond its export grain. However, notwithstanding this situation, the country has made great advancement during the year, and as to make up for the shortage of the previous year, the soil has during the last season brought forth some abundantly. The crop of 1901 has been a magnificent one, and has brought prosperity and contentment to thousands.

The most noticeable feature of the past year has been the large immigration of a fine class of settlers from the United States, with a promise of a continuation of this movement with augmented volume for the future. This indicates that our neighbors to the south are learning of our great resources and possibilities. They have been flocking all over the prairie region from Winnipeg to the Rocky Mountains, and thousands of them have located here permanently. The construction of the second railway connecting the prairie region with the head of navigation at Lake Superior, is another great event of the year. Other railway work of a less important nature has been carried on in many parts of the country.

Land sales have been very large. The Canadian Pacific Railway land sales for the year were \$30,000 acres, that is about double any preceding year. This is an index to land business generally.

In Winnipeg there has been a decided expansion in business and population. Bank clearings here for the year were \$127,711,158, compared with \$103,012,782 for the previous year, which may be taken as an index to the growth of the city.

### THE GRAIN BLOCKADE.

The announcement was made early this week that the Canadian Pacific Railway elevators at our lake ports were practically filled with wheat. It was a foregone conclusion that in a short time after the close of naviga-

tion the lake port elevators would become blocked, and this has now happened. While the elevators were not actually full at the time of writing, there was enough grain in transit or ready for shipment to fill all available space. The capacity of the Canadian Pacific Railway elevators is nominally something over 5,000,000 bushels, but the actual capacity is not greater than about 5,000,000 bushels, allowing for waste space in different grades. The new Canadian Northern road, which is now about completed to Lake Superior, has an elevator of 1,500,000 bushels capacity under construction, but this will not materially help the situation, especially as the Canadian Northern will carry wheat to Port Arthur which now goes to Duluth. There is now apparently nothing but a general grain blockade in sight. Many country points are now blocked, and the quantity that can be moved by the all-rail haul to the seaboard is so small that it would be impossible to keep the markets open in that way. There is, however, apparently very little demand for shipment all-rail, and prices offered are not satisfactory. Even if the grain could be sent out in this way, it would not pay the farmers to sell on this basis. It will in all probability be more profitable for the farmers to carry the grain themselves until navigation opens again. Even if they could dispose of their crop on the present basis, it would not likely be as profitable to them as to hold the grain themselves.

### FIRST THROUGH TRAIN.

The first through train over the new Canadian Northern line between Winnipeg and Lake Superior left Port Arthur Tuesday morning about 10 o'clock. On reaching about 12 miles east of Port Arthur it was found that there was still some 1,800 feet to finish. A halt was made there over night and amid appropriate ceremonies the last rail was laid at 10:47 a. m., New Year's day, when the train proceeded on to Winnipeg.

### ENTERPRISE.

Enterprise is attractive. Consumers prefer to buy from retailers who show enterprise in their business management. Retailers in their turn like to see evidences of enterprise displayed by the wholesale houses with whom they deal. A travelling man met a representative of The Commercial on the street in Winnipeg one day and after some conversation he found that our house has discontinued its advertisement in "The Commercial". The Commercial representative replied that he did not know, and told the traveller to ask his own business manager. "Well," replied the traveller, "I have just returned from a city through the Kootenay and Boundary districts in British Columbia, and I have been asked this question several times by our customers. One even went so far as to intimate that we ought to show more enterprise as he liked to see the houses which he purchased from represented in his trade papers."

This is not a manufactured story, but an actual occurrence, giving the conversation almost word for word. We have in this issue of The Commercial two advertisements which show special enterprise on the part of our jobbers. On pages 416 and 417 will be found an interesting announcement to the dry goods trade by R. J. Whitla & Co., limited. No enterprise shows up more, consists less,

and gives better returns than Judiciously advertised. A fine warehouse appeals only to those who come to see it, but the advertisement goes out to see the customer. The first issue of The Commercial contained an announcement from R. J. Whitla & Co., and they have never been out of the Journal since. With the result they are thoroughly satisfied.

The other special announcement which we wish to draw attention to comes from a completely new house. See pages 420 and 421. The new wholesale business of J. L. Melke & Co., Port Arthur, has been established about a year, though the name has been familiar for many years. Northwestern Ontario for throughout Mr. Melke has been a long time in business at Port Arthur, and is also well known in Winnipeg, where he had important business interests.

### A GREAT EVENT.

The last spike in the Canadian Northern railway line, in the long link between Winnipeg and Port Arthur, Lake Superior, was formally driven on Monday, at Antkottkan, in the presence of a distinguished party of the promoters of the road and their friends. The spike, though formally the last one, is not actually so, as some little work remained to be completed to make connection unbroken. On Monday evening a banquet was held at Port Arthur, in honor of the event, which is one of vast importance to the West, signifying the construction of the second vital link between the great prairie country of Western Canada with Lake Superior, by a road which is likely to become a transcontinental line within a few years.

### POWER FOR WINNIPEG.

"I am happy to be able to announce here-to-night that the question of the supply of electrical power, which will enable Winnipeg to successfully compete with any manufacturing city in this Dominion, has been solved and that preparations are now under way to establish a plant which will furnish this city with motive and illuminating power at half the present cost." The statement above was made by P. W. Thompson, manager of the Ogilvie Milling Co., at the Travellers' banquet in Winnipeg on Monday evening last. Mr. Thompson is interested in one of the companies which proposes developing one or more of the several large water powers within easy distance of Winnipeg.

### Toronto Travellers.

Toronto, Dec. 28.—An exceedingly satisfactory report of the year's business was made by President M. C. Ellis at the annual meeting of the Commercial Travellers' Association of Canada yesterday. The statement of the board of directors showed the total assets at the present time is \$486,000 being an increase of \$40 over last year. Mortuary benefits during the year were \$24,028 and was put aside for the permanent reserve fund. This fund now amounts to \$37,324. The maximum mortuary benefit for 1902 was again fixed at \$1,000. Dealing with the matter of improvement in the country hotel accommodation, the directors advised members to report any objectionable features to the Board.

In discussing the new railways of the west President Ellis said he felt justified in saying that wholesale and manufacturing firms would soon find it necessary to double their travelling staffs now working north and westward to the Pacific coast. It would reap the full measure of trade which would follow construction and settlement.

The officers elected by acclamation were: President, Ellis; first vice-president, William Caldwell; second vice-president, John McQuillan; treasurer, James Caldwell; secretary, J. H. McQuillan; and assistant secretary, was re-appointed secretary. The other elections resulted as follows: Toronto board of directors, J. H. Gibson, Louis A. Howard, L. Duncan, H. Goodman, George West, Robert Keyes, W. A. Leonard, J. H. Hamilton; board: First vice-president, James Hooper; second vice-president, Fred Hickey; J. H. Herring, W. G. McGee, J. C. McGee, Kingston board: Directors, W. H. Graham, W. S. R. Murch.

### Rosland Mining Strike.

Ottawa, Dec. 28.—A detailed report on the Rosland strike by the deputy minister of labor, Mr. W. L. M. King, appears in last month's issue of the Labor Gazette. Mr. King narrates the circumstances under which the strike was ordered. In brief, he says sympathetic strike of the members of the union at Northport, who went on strike some time ago, and the settlement of the demand for (2) the increase in the wages of muckers from \$2.50 to \$3 per month, and (3) to end future discrimination by the company against members of the union. Of the three the most important, discrimination, was probably the most important cause, it having been a real grievance to the union for some time past. When the strike was declared on July 11 over 1,000 men in all were out, including not only the employees of Le Roi mines, but all classes of employees of Le Roi mines in Rosland, and employees of the War Eagle and Centre Star mines, and the employees of smaller mining plants in the vicinity. Immediately after the strike was declared, the properties were closed entirely, and remained closed for some time.

When Mr. King arrived at Rosland on November 1, he found the mines Nos. 1 and 2 were each working, and the management claimed to have between 500 and 600 men at work. When asked for a statement of their own policy, Mr. King, the managers of Le Roi Co. wrote that their mine was in full operation, and the employees were satisfied with the hours of labor and the wages paid, and were working peacefully. In view of these facts they felt it was unnecessary to discuss a past condition of affairs, which no longer concerned the company. The managers of the War Eagle and Centre Star companies wrote that there was an abundant supply of labor, and they were able to operate their mines whenever they felt disposed to do so. They, too, deemed useless a discussion about the past condition of affairs. The executive officers of the union refused to call a meeting at which Mr. King might read these communications and make a statement. There was also a refusal to allow the deputy minister of labor to see whether or not the strike was peacefully terminated. In justification of their position, the union stated that to declare this strike at an end, without having some definite acknowledgment from the mining companies as to what they were prepared to do, would be tantamount to considering the increase demanded for the wages of the muckers, would be to leave in a precarious position the interests of the muckers in other mines in British Columbia, and that consequently it was their duty to have to be perpetuated indefinitely.

Since Mr. King's report was submitted to Mr. Thompson, the strike continued at Le Roi mines Nos. 1 and 2, and the pay roll of each of these mines indicated that the employees employed during the past month have been nearly equal to the number employed prior to the strike. The strike had not commenced at the War Eagle and Centre Star mines at the close of the month, but negotiations already begun for the unwavering of these mines, and the union stated that they would recommend to work early in the month of December. The Nickel Plate and Great Northern manufacturing firms would be affected by the strike, had about 600 men at work at the close of the month. The mine at Centre Star mines state that they have been obliged to refuse a large number of men to work at the mines, especially from men seeking positions as muckers.





Annual Event N. W. C. T. A.

The annual banquet under the auspices of the Northwest Commercial Travellers' association, held at the Grand hotel, Monday night, was attended by nearly 200 members and friends of the organization. The head of the table sat Mr. G. F. Bryan, president of the association, supported by such well-known figures as W. F. McCreary, M. P.; Mayor Arbutnot, Dr. Rutherford, Chas. Young, president of the Board of Trade, D. K. Elliott, and many others. Mr. F. M. Morgan, vice-president of the association and president-elect for 1902 occupied the vice chair, associated with him being Mr. L. C. McIntyre, Mr. Andrew Grant, Jos. Maw and other figures well-known in commercial circles. Every appointment and arrangement necessary for a pleasant evening had been made. The menu was most elaborate and served in the most beautiful style, an orchestra, rendering choice selections, while the speeches were better appreciated. The toast list, which followed, was inspired with vocal numbers by Mrs. J. M. Johnston, W. H. Hamer, J. M. Johnston, and O. H. Day, all of whom received hearty remarks.

The speeches were largely on commercial lines and the immediate necessities of adequate transportation facilities was the keynote of more than half a dozen speakers. Remarks were made by Mr. G. F. Bryan, in introducing the toast list in a brief address, which he closed with a few words of encouragement, gathering indicating the prosperous season. The commercial travellers of the first part of the evening had many hard times when hard times came and when the country was prosperous he was invited to give the toast to His Majesty the King.

The toast was honored by all present with the exception of "The People's Leaf."

Mr. Scanlan rose in answer to the toast to the "President of the United States." He believed that the best good feeling existed between the two countries and was glad to be present as a travelling man and as a merchant. Mr. Scanlan was closed with a few brief but appropriate remarks.

Mr. McCreary in responding to the toast to the Dominion Parliament was received by an ovation and cries of "McCreary, McCreary." The Bill and similar familiar greetings. He was glad to be received not only as a representative of the Dominion Parliament but also as plain "Bill" McCreary. He had known commercial travellers under many circumstances for many years and had never thought them the most sociable and best natured men of any he had met. He thought the traveller was in the best position to be able to judge the progress and condition of the country. He was trade as it was. He saw the merchants were feeling, how prosperous the farmers. He was not able to judge the true state of affairs.

And the country we live in is a vast and prosperous country. It was a vast producing country. It was one of the greatest mineral-producing countries in the world, but it was equally a wheat-producing country. When the sparsely populated country of 40-day had produced 60,000,000 bushels of wheat, the densely populated country of Manitoba alone would produce 500,000,000 bushels. If the wheat went to the elevators of Manitoba were blocked and that the railways could not take it to the coast, the country harm in the eyes of those foreign people. To-day we have a comparatively small number of ships and want several more parallel lines. We want whiteback vessels to carry the cargo. We want more wharves and transportation facilities to the east to keep to the west with the progress of the country.

During last year the homesteaded land had exceeded those of any previous year. The 700 entries in 1901, C. P. R. alone had sold over 1,000,000 acres of land. He believed that the world would see 30,000 people from the United States come into this

country. In the near future that number would be greatly exceeded, but a question which the Dominion Parliament has not yet considered is the N. W. T. legislature was not adequately facing was how to meet the needs of the more influx of population. It would soon impose upon them. The commercial travellers were becoming more and more influential. They thought they should unite and demand their rights from the government and they were making his seat Mr. McCreary was loudly applauded.

Mr. Bryan in proposing the "Local Legislature" regretted that neither the Hon. R. P. Roblin nor any but one member of the legislature were present to reply, but would couple with the toast the name of one who had been a member of both the Dominion House and the local legislature. He referred to Dr. Rutherford.

Dr. Rutherford was greeted with loud cheers. He did not know why he should be called upon to reply to the toast which had been given by a local legislator. He hoped to be a very respectable body. (Laughter.) He met with the commercial travellers in the west. He had just had a meeting a representative of the grip makers in the west and had met individual after a few casual ones. He told him: "Are you working your way across the continent?" He was forced to answer that was the object he had in view. (Laughter.)

"The City of Winnipeg" was coupled with the toast by Mayor Arbutnot. He thanked the speakers for their hearty way the toast had been received. He had a belief and that of the citizens of the city. "We should feel proud of the progress that the city had made. One of the great responsibilities of this young city was that of making room for and preparing for the industrial, manufacturing and manufacturing interests that would soon make Winnipeg their home. He thanked the speakers for the beauty of the streets and the tributes had of late been paid to it. He was one of the youngest cities on this continent. Mayor Arbutnot closed with the toast in the value of the commercial traveller as the value of progress. Many business men have done fortune by sending the advice of their travellers met in the commercial conditions in their true light.

Mr. D. K. Elliott was first called upon to respond to the "Commercial Interests." He was followed by Mr. F. W. Thompson. Mr. Thompson again referred to the problem of transportation and expressed his wish to warn the railway companies that they would have to meet the growing demand for their future he would prophesy that electric power would be supplied the city of Winnipeg at about half the present cost. (Applause.)

He was followed by Charles Young, M. P. P. Mr. Young wished to speak particularly of the grain interests. He did not think that the grain trade was entitled to all the blame that was sometimes given them. To some extent he believed the blame was on the sections of the press in referring to the fullest extent the grievance of farmers and the elevator men. This was the country had the best elevator system in the world. There are over 800 elevators in the Northwest to-day, and all or almost all were full of grain. This brought us face to face with the transportation question. That question was a serious one. The transportation question was widely not settled, or if it were settled then God help the country. There is to-day at least 12,000,000 bushels of grain in the country that should have by this time been sold and the money scattered through the country. The chairman regretted that no representative of the railroads of the country was present to respond to the toast. He would, however, couple with the toast the name of Mr. C. N. Bell, a man who knew something of everything.

Mr. Bell replied in a brief but pointed speech. He claimed to be the first commercial traveller in this country, as far as the year is concerned, as far as some of the Indians. He thought that the fault in the transportation question was with the railways. If the crop had been taken to Port William it was a question if the world would have been able to take it east. Besides increased rail-

way facilities, the country wanted a larger merchant marine. Mr. Morgan proposed a toast not in the list, that to the "Old Boys of the Road." He referred to this the names of Mr. A. Strang, Mr. Hinna and Mr. Johnston. He applied with characteristic anecdotes of the road. The toast to the Press and the Ladies was given by the members of the largest and most successful gathering ever held under similar auspices. It was closed with a close with "Auld Lang Syne."

**Dominion Statistics.**  
Ottawa, Ont., Dec. 26.—The public accounts' blue book of the Dominion of Canada for the fiscal year ending June 30, 1898, was issued to-day. The financial statement of the year has already appeared. Therefore, it is only necessary to say on that point that the exact surplus over ordinary expenditure was \$3,648,350, the net receipts being \$22,514,701.

There was charged to capital account \$3,688,830 for the Intercolonial railway and \$280,000 for the Prince Edward Island road. On the St. Lawrence canal there was expended \$433,000. On the Grand Trunk and on the Welland \$244,536. On public works there was expended on capital account \$1,049,085, \$884,000 of which was on the Yukon.

Public Subsidies to the amount of \$2,512,328 were paid out of the account of the following:

Atlantic and Northern Ry....	\$ 186,000
Manitowish Valley Ry.....	1,275,000
Great Northern Ry. of Quebec.....	243,323
St. Lawrence Ry.....	1,000,000
Inverness and Richmond Ry....	132,800
Canadian Northern Ry.....	1,000,000
Grand Trunk Ry.....	223,471
St. Lawrence and Ottawa Ry.....	1,000,000
Midland Ry.....	170,000
Ontario and Quebec Ry.....	1,000,000
Ottawa and New York.....	32,300
Quebec Bridge.....	74,570
St. Mary's Bay.....	100,000
Crow's Nest Pass Ry.....	200,534
Pontiac and Perth Ry.....	100,000
and Gatineau Valley Ry.....	215,200

Total..... \$2,512,328  
The sum of \$508,810 was paid in connection with the consolidation of contingents, and \$340,870 on account of the Halifax grant.  
The balance on the credit of the depositors in the postoffice and government savings banks amounted to \$2,484,847, an increase of \$2,860,254 over the balance held on June 30, 1897, a part of this increase, \$1,080,761, represents an increase in various accounts, and the remainder, \$1,380,473, the excess of receipts over withdrawals.

**Dominion notes** to the amount of \$273,482 were outstanding on June 30, as against \$260,941,923 on June 30 of the previous year, or an increase of \$12,540,561.  
The increasing volume of the business of the Dominion is doubtless the principal cause of this expansion in the situation, but a part of it is apparently attributed to the fact that the chartered banks are approaching the limit of their circulation allowed by the terms of the Bank Act, and are using the facilities of the currency ordinarily their own notes would be employed.

During the past seven years there has been a very pronounced advance on the amount of the notes of chartered banks in circulation. At the close of the fiscal year ended on October 31, 1894, the bank notes were \$1,184,400,000, and at the close of the fiscal year ended on October 31, 1897, they were \$1,741,719,000, or an increase in the period covered of \$557,319,000. The combined paid-up capital of the chartered banks, according to the last statement, is \$74,410,000, or about one-fifth of the combined paid-up capital of the banks, according to the last statement. The margin between the combined paid-up capital and the amount of the notes in circulation may be added, is confined to a comparatively few of the banks. The demand for Bank of Montreal's notes still continues, being a quarter of a million for October in excess of October, 1898.  
The net debt of the Dominion at the close of the year was \$208,480,000, or an increase of \$2,980,106 for the year. The total capital account was \$1,110,400,000. From this there is to be deducted the amount of the currency in circulation, the sinking funds and refunds amounting to \$810,000,000, leaving a balance of \$2,980,106, which was expended on the public debt for the year. About one million of this was expended on the South African loan, and the Halifax grant.

The total revenue of the Yukon since 1885 was \$7,700,103, and the expenditure \$5,946,216, leaving a surplus of \$1,753,887.

The revenue from the Intercolonial was \$1,072,255, compared with \$1,071,071 last year, an increase of \$122,104. The expenditure was \$5,409,420, or an increase of \$1,000,000. The difference between the revenue and the expenditure for the year shows a deficit of \$4,337,165. The motives alone there was an increase in the expenditure this year over 1900 of \$600,000. The cost of the maintenance of ways \$185,250, on such stations was \$40,324, on general expenses \$40,000, and on other items \$2,844. There was a decrease of \$24,017 Co. The total increase of the deficit which makes the total increase of \$1,072,255, or \$408,888 greater than in the previous year.

**Northern Securities Co.'s Trustees.**

St Paul, Minn., Dec. 30.—At noon today President Chas. S. Meilen, of the Northern Pacific Railway Co., was served with papers which enjoin the company from retiring the preferred stock. This injunction was granted upon a bill of complaint, filed by Foster Wheeler & Co., a corporation of New York, and a holder of a certificate of the common stock of the Northern Pacific Railway Co. The petition in brief alleges the organization of the Northern Pacific Railway Co. for the purpose of operating a railway system between Ashland and the Pacific coast through various intermediate states, and that in 1885 it became the owner of the railroad system formerly owned and operated by the Northern Pacific Railway Co., and that its lines run through the State of Michigan. It alleges in the complaint that the officers of the Northern Pacific Railway Company, during the last summer and since the plaintiffs became the owners of this stock and without any knowledge on their part, went into combination with the Great Northern Railway, Chicago, Burlington and Quincy, for the purpose of concentrating and consolidating the three systems under one management, and of knowing that the same would be effected, the directors of the three companies, for the purpose of doing indirectly, caused to be organized the Northern Securities Co.

**Alberta Oats.**

A meeting of farmers, grainmen and business men was held in Edmonton last Thursday afternoon and passed a resolution regarding the action of the Western Grain Standard board concerning Alberta oats. The resolution asks the minister of inland revenue to suspend immediately the certificates granted established by the board until an impartial investigation of the average quality of the oat crop of northern Alberta for the past season has been made under the direction of experts. The meeting also suggested the establishing by statute of grades of oats, and that the same requirements as the Act now demands for No. 1 white, but having a weight of not less than 35 pounds per measured bushel. The resolution also asks that the minister of inland revenue be re-addressed to the minister of inland revenue to deal with such matters having been passed at the last session. Several strong speeches were made by leading men of the town and district in support of the resolution. The subject of shortage of cars was also brought up and a resolution passed by the board pointing out that warehouses and elevators are not so plentiful that the grain could not be sent forward.

**Kootenay Mines.**

Rosland, B. C., Dec. 28.—The shipment of ore from the Rosland camp for the week ending Dec. 28 aggregated 4,500 tons, 3,000 tons from the No. 2, and 150 tons from the Le Roi No. 2. Each of the mines were shut down two days last week, because of a shortage of cars and the shipments were affected accordingly. The same was the case for the year to date is 210,000 tons.  
Grand Forks, B. C., Dec. 28.—During the week ended to-day the Granby smelter treated 5,201 tons of ore, or an average of 1,040 tons per day. It breaks all previous records. The grand total treated to date is 285,810 tons.

# Stop and Consider

The man who sells you stop clothing cannot afford to give attention to improving his goods.

It keeps him busy trying to shave a few cents in making expenses.

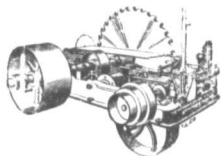
He cannot add a few cents to give you greater value.

## DONALD FRASER & CO.

Manufacturers of Fine Clothing

WHOLESALE

WINNIPEG—136 Princess Street  
MONTREAL—502 St. Paul Street



ENGINES AND BOILERS

### Waterous Engine Works Co

WINNIPEG, MAN. AND VANCOUVER, B.C.

## THE STUART-ARBUTHNOT MACHINERY CO., LIMITED

BROCKERS TO STUART & HARPER

764-766 Main Street, Winnipeg

HEAVY MACHINERY MERCHANTS  
ELECTRICIANS

Sole Agents for:

"Leonard's" Engines and Boilers, "Brown" Automatic Engines, "Canton" Mining  
Fire and Boiler Feed Pumps, "Cameron" Steam Pumps, "Dodge" Wood Split  
Pumps, "Bendish's" Leather Belting, Marking, Goutry & Co's. Road  
Working Machinery, Stratford Mill Building Co's system of complete Fire  
Mills.

LONDON Motors, Dynamos and Elevators,  
FAU-KARD'S LAMPS, Transformers and Supplies.

### Northern Pacific Stock.

New York, Jan. 2.—Formal notice was issued to-day that in the exercise of the power conferred upon it, the Northern Pacific retired its preferred stock in whole yesterday.

Notice was also given by the Northern Pacific Railway company that it had elected to require the holder of every four per cent. convertible certificate of the company to convert the same into common stock of the company. These notices showed that from and after to-day the capital stock of the company would consist of \$155,000,000, entirely in common stock. All of the Northern Pacific stock is to be taken over by the Northern Securities company, which will also acquire all of the stock of the Great Northern. The belief in Wall street was general to-day that the obstacles in the way of carrying out the plan for the adjustment of the difficulties which grew out of the contest for the control of Northern Pacific last May are removed.

### Reciprocity Resolution.

New York, Jan. 2.—A meeting of the chamber of commerce was held here to-day. Addresses were made by M. L. Weiler, a representative of French interests and by Lewis Max Goldberger, of Berlin, both of whom are in this country to investigate American commercial methods. The committee on foreign commerce and revenue laws presented a report and resolutions disapproving of the action taken by the reciprocity convention held in Washington. This report and the resolutions were adopted after considerable debate. The resolu-

tions which were adopted, read as follows:

"Whereas, this chamber has consistently favored the establishment through reciprocal concessions in tariff rates of closer trade relations between the U. S. and the commercial countries of the world; and, whereas, the National Reciprocity convention, in its recent session in Washington, D. C., adopted a resolution commending reciprocity through tariff modifications hereinafter mentioned, and that from and after to-day the capital stock of the company would consist of \$155,000,000, entirely in common stock. All of the Northern Pacific stock is to be taken over by the Northern Securities company, which will also acquire all of the stock of the Great Northern. The belief in Wall street was general to-day that the obstacles in the way of carrying out the plan for the adjustment of the difficulties which grew out of the contest for the control of Northern Pacific last May are removed.

Therefore, be it resolved that this chamber hereby expresses its disapproval of the action taken by the National Reciprocity convention in Washington on Nov. 20, as subversive to all attempts to bring closer trade relations with our sister nations and open new and wider markets for our products; and be it further resolved that the chamber views with apprehension the policy advocated by the reciprocity convention as likely to invite hostile legislation on the part of other nations against this country to the great detriment of its commercial interests."



WAREHOUSES:  
TORONTO AND MONTREAL

OFFICES: WINNIPEG, VANCOUVER, QUEBEC, HALIFAX

SHOWN THIS WEEK BY OUR

TORONTO HOUSE AND REPRESENTATIVES

10,000 PIECES

## 32-in. Heavy Canadian Print

300 PATTERNS

ASK FOR SPECIAL QUOTATIONS

REPRESENTATIVES, MANITOBA, NORTHWEST TERRITORIES AND BRITISH COLUMBIA.

W. L. BROOK, W. T. WALTERS, G. W. PARKER,  
ASHDOWN BLOCK, WINNIPEG

A. E. MONAUGHTON  
VANCOUVER

### British Live Stock Market.

London, Dec. 30.—The trade in cattle and sheep was fair, but the undertone to the market was easier, and prices were lower than they were a week ago. American cattle sold at 12½c to 13½c; Canadian cattle at 11½c to 12½c; States and Canadian sheep at 11½c to 12c.

A private cable from Liverpool quotes choice Canadian cattle at 12½c, medium at 11½c to 12c, and sheep at 10½c.

### A New Industry.

The G. F. Stephens Company, Limited, of Winnipeg, started up the new paint factory which they have recently built and equipped at the rear of their wholesale premises on Market street, this week. The factory is the first of its kind in Winnipeg, and will be quite an addition to the city's industries. The machinery is the latest and best of its kind.

### Winnipeg Grain Inspection.

During the 10 days ending December 31 there were inspected at Winnipeg and Emerson 188 cars of grain comprising the following:—  
Wheat—No. 1 hard, 8 cars; No. 1 northern, 44 cars; No. 2 northern, 103 cars; No. 3 northern, 6 cars; rejected, No. 1, 3 cars; rejected, 1 car; no grade, 1 car; No. 4, 1 car; total, 167 cars.

Oats—No. 2 white, 6 cars; 3 mixed, 3 cars; feed, 11 cars; total oats, 20 cars.  
Barley—No. 3, 1 car.  
In a year ago the total number of cars inspected was 325, and the like week two years ago, 423 cars.

Monthly Inspection.  
During the month of December the following cars were inspected:—  
Wheat—No. 1 hard, 169; No. 1 northern, 2,065; No. 2 northern, 2,643; No. 3 northern, 142; No. 4, 15; feed, 2; No. 1 rejected, 20; No. 2 rejected, 10; no grade, 163; condemned, 7; rejected, 16; total, 6,681 cars.  
Oats—No. 1, white, 1; No. 2, white, 431; No. 2 mixed, 37; feed, 138; rejected, 15; total, 622.

Barley—No. 3 extra, 1; No. 2, 2; feed, 21; no grade, 2; total, 24 cars.  
Flax—No. 1, 3; No. 2, 25; rejected, 4; no grade, 1; total, 33 cars.  
Grand total for December, 236 cars.

Inspection on Crop to Date.  
During the four months ending December 31 the following cars of grain were inspected at Winnipeg and Emerson, comparisons being as given:—

Wheat—	1901	1900	1899
1 hard	6,777	702	118
1 northern	8,218	1,969	185
2 northern	11,380	2,266	185
No. 3 northern	610	91	38
No. 4	13	—	—
Feed	13	—	—
No. 1 rejected	32	97	63
No. 2 rejected	21	4	21
No grade	1,632	2,220	200
Condemned	59	12	21
Rejected	20	23	3
Total	29,472	5,324	503
Totals	28,834	7,802	603

Oats—			
No. 1 white	—	7	7
No. 2 white	—	829	12,713
No. 2 mixed	—	129	2
No. 3	—	—	—
No grade	—	317	26
Condemned	—	12	—
Rejected	—	21	27
Total	—	1,175	14,445

Barley—			
No. 3 extra	—	16	—
No. 2	—	129	13
Feed	—	32	9
No grade	—	4	4
Rejected	—	21	7
Total	—	152	43

Flax—			
No. 1	—	3	13
No. 2	—	70	3
No. 3	—	—	—
Rejected	—	2	2
No grade	—	—	—
Total	—	75	18

Grand total cars . . . 30,458 7,980 203

Note.—The grade of wheat now listed as No. 1 northern in cludes in the same white eye of last year and the year before, and the grade No. 2 northern includes the old No. 2 white eye No. 1 hard and No. 1 spring wheat.

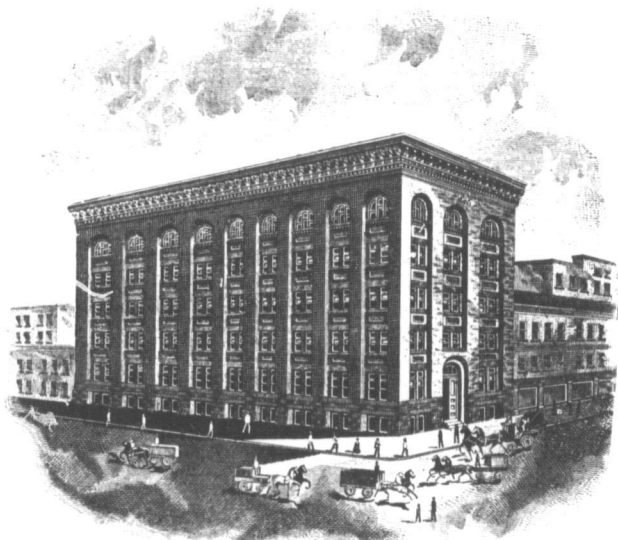
Customs collections at Winnipeg increased about \$200,000 for 1901, compared with the previous year.



# R. J. WHITLA & CO. LIMITED

Wish their many friends in the trade

## A Happy and Prosperous New Year



While we express our thanks for the generous share of the business which you have accorded us in the past, we desire to draw your attention to our

### New Spring and Summer Stock of Dry Goods for 1902

Throughout each Department our chief aim is to carry the goods best adapted for your trade—the trade of the Great West. We have everything that a first-class Dry Goods Store should have, and of such assortment, quality and good values as will make your business increase rapidly in favor and profit.

### OUR FACTORY

To supply the increasing demands of the Overall and Shirt trade we were compelled to start and equip a factory of our own. The success which has met our efforts has led us to adopt the accompanying trade mark on all goods manufactured by us.

The already well-known merits of the **KING OF THE ROAD** Overalls lie in the strong **double-stitching—double crotch**—the finished seams—patent suspender straps—every conceivable improvement as to pockets and mechanical design—and unequalled workmanship throughout.

They are made of best 8 oz. and 9 oz. Denim in blue and grey.

You can handle these goods without any trouble. They sell wherever shown. Send for a sample dozen assorted sizes on trial.



# R. J. WHITLA & CO. LIMITED

McDERMOTT AVENUE, WINNIPEG

## STAPLE DEPARTMENT

THIS DEPARTMENT presents many attractive values in Table Linens, White and Grey Cottons, Denims, Flannellets, Salish Ties, Shirts, Oxfords, Ginghams, Silesias, Sateens, English Prints, Canadian Prints, German Prints, Stüfel Prints, Cretanes, etc., etc.

A look through the many different lines will be appreciated.

## DRESS GOODS DEPARTMENT

### Black and Colored Goods

Our assortment contains every desiring new thing, and we are not only willing but anxious that you look through our samples or stock and see for yourself that we have the latest, choicest and best.

A few of the many lines carried are Crepe de Chene, Silk Warp Henrietta, Soieles, Royaleite, Melrose, Armures, Poplins, Voile, Creponne, Royale, Drape de Paris, Eolienne, Creponette, Grenadines, Satin Cloths, Satin Sublime, Amazons, Box Cloths, Vigoreux, plain and fancy Mohairs, and Serges in all shades and prices.

### Woolens and Tailors Trimmings

This season's assortment is better and more extensive than ever before. The many lines carried include Domestic and Imported Tweeds, Serges, Worsteds, Venetians, Viennas, Fancy Suitings and Pantings, Fancy Vesting and Overcoatings.

### Muslins

THIS SEASON'S COLLECTION is the most delightfully pretty we have ever received into stock. Many new creations are shown and the quality and values represented combine to make the assortment one of the best paying items in your business.

Dimities in plain and fancies.  
Lace Muslins in black, white and ecru.  
Lace Muslins in white and black.  
Lace Muslins in ecru and black.  
Tuck Muslins.  
Fancy Chip Muslins.  
Striped French Organdy.  
Organdy Soyeuse.  
Barges.  
Silk Striped Barege.  
Silk Striped Mercerized Lawns.  
Fancy Mercerized Grenadine.  
Fancy Battiste Grenadine.  
Knicker Zephyrs.  
French Organdy in white and black.  
Swiss Organdy in white and black.  
Swiss Mull in white and black.  
Persian Lawns.  
Linen Lawns.  
Victoria Lawns.  
Spot, Strig and Fancy Swiss.  
Anglo Swiss.

### House Furnishings

IN LACE CURTAINS we have many new and artistic designs, which appeal to the ladies particularly. The quality and values are the best, and the extensive range includes the most popular and fashionable curtain draperies sold.

CURTAIN NETS, CURTAIN MUSLINS, fancy, plain and frilled Muslins in all the leading widths.

TAPESTRY and CHENILLE CURTAINS in large variety.

CARPETS in Hem, Union, Wool, Tapestry, Brussels, Velvet, Axminster and Wilton, wit. or without border.

RUGS in like qualities, in all sizes.  
ART SQUARES in Union, Wool, Tapestry and Velvet in new choice patterns.

TOWELS in great assortment in all qualities.

Table linen in sets with cloth and napkins to match, or separate, in all sizes.

Bed spreads, white and colored, all sizes are kept in stock.

**Silks**—In all the latest novelties. Black and Colored Taffeta in many qualities and complete range of colors. Black Armure, Peau de Soie, Mervs, Gros-Grains, Coronation, Japan (in 20 and 27 inch widths), Satin Duchesse and Brocades. In this assortment you'll find many interesting features worthy of your careful consideration.

### Fancy Goods and Smallwares

**EMBROIDERIES**—All new and original in design, comprising Edgings, Insertions, Allovers and Flouncings in Cambric, Swiss and Nainsook.

**LACES**—Allovers, Edgings, Insertion Galons, Valenciennes, New Fancies, Arabe, White and Cream Galons, Tatting, Silk Chantilly, Torchon, Linen, Silk, and Cotton. All choice and select.

**VEILINGS**—The latest productions of France, in white, Cream, Magpie, Jackdaw, New Blue, Cardinal and Browns; in White Spot, etc. Bridal Veilings, Mechlins, and Brussels Net. Chiffon in 6 in. and 42 in. widths.

**RIBBONS**—A thoroughly dependable assortment in all the widths and colors; in Silk, Silk Faille, Moire, Taffeta, Gros Grain, Satin (double in two qualities). Fancy Neck and Baby Ribbons, Velvets in Cotton and Satin back.

**CORSETS**—The "Prima Donna." We are the special agents for this popular line of imported corsets—in all sizes. We also carry a large assortment of P. C. and B & C Corsets in ordinary or straight-front styles. The many lines we carry are of the latest styles, each with some good feature to recommend it.

**LADIES' WHITEWEAR**—A full range, well assorted, at prices that makes them sell.

**BLOUSES**—Of all descriptions, colors and styles, containing the latest fashions. Over 100 lines to choose from.

**SCHOOL GIRLS' DRESSES**—Of English Cambric; in 9 sizes. See them.

### Men's Furnishings

"King of the Road" **SHIRTS**—In Ducks, Moles, Denims, Drills, Flannellets, Oxfords, Ginghams, Galateas, Sateens, Silk stripes, and Ceylons. For men and boys; in all sizes. Dress Regatta Shirts in all the latest styles. The largest range we have ever carried.

**BRACES**—An extensive range of English, American and Canadian makes, including the Police, Fireman and Postman's Specials. Fine suspenders for the best retail trade.

**NECKWEAR**—The latest New York and London styles are here and include the Graduated, Derby, Paris, Shield Bows, "Bend Me" Bows, Clipper or String Ties, Flowing Ends, and Windsor. The designs and colorings are very fashionable.

**COLLARS AND CUFFS**—In Canadian and London makes, under the popular names. Boulevard, Leader, Derby, Salisbury, Richmond, Rosebery, York, Cornwall, Baden-Powell, Lisburn, Henley, Strathcona, Cambridge, Dublin, Bobs, Zola, Apollo, Cricket, Shirland and Meteor. All sizes, popular heights and shapes.

Our stock of small-ware and men's furnishings is thoroughly up-to-date in every particular at keenest prices. All the latest novelties are here.

Your orders, whether large or small, always command our best attention. Our shipments are always prompt. We would desire that you give us a trial—and watch results.

# Down Come Oranges

1208	- - -	\$3.75
1508	- - -	\$4.00
1768	- - -	\$4.25
2008 and smaller	- - -	\$4.75

**THE MACPHERSON FRUIT CO.**  
LIMITED.  
491 Main St., Winnipeg

We have a good stock

## Robin Hood Smokeless Powder, Loaded Shells

Write for prices.

**MARSHALL-WELLS CO.**  
WHOLESALE HARDWARE,  
WINNIPEG.

# DRUGS

We now have a fresh stock of heavy drugs, such as EPSON SALTS, SULPHUR, Saltpetre, and Borax, not excelled in point of purity. Low prices for quantity.

Write for quotations.

**The Martin, Bole & Wynne Co.**  
WHOLESALE DRUGGISTS  
P. O. Drawer 1461. **WINNIPEG**



## Canada's Favorite Brands of Galvanized Iron.

Equalled by none for quality and durability.  
Exceeded by none but

**"Queen's Head"**

**JOHN LYSAGHT, Limited, makers,**  
Bristol, Eng.  
A. G. LESLIE & CO., Montreal, Managers Canadian Branch.

Don't Place Your

# GLOVE AND MITT

Order for Next Year until you see our Samples

We show a full range of American Gloves which are the best value ever shown in Canada, also a full range of Canadian Makes. It pays to place your order with us as we can sort up with the same lines when your stock gets broken.

**THE KILGOUR-RIMER CO. Ltd., 57 Princess St.**

SOLE AGENTS FOR MAPLE LEAF RUBBERS

# RAT PORTAGE LUMBER COMPANY

LIMITED

MANUFACTURERS OF

**LUMBER,  
LATH, SHINGLES,  
SASH,  
DOORS**

AND ALL KINDS  
OF WOODWORK

Head Office and Mills at RAT PORTAGE, ONT.

Branch: Point Douglas Avenue, WINNIPEG

# Don't Forget DAISY AND AMERICA BRAND RUBBERS AND OVERSHOES

If you are in need of Leather, Felt or Rubber Boots and Shoes, we can supply your wants. Stock is complete and prices right. See our new samples for spring including OUR OWN MAKE of hand made Goods. Travellers now on the road.

A TRIAL SOLICITED

**H. G. MIDDLETON & BRO.**

139 ALBERT STREET  
WINNIPEG  
P. O. BOX 623

Adjoining Leland Hotel.

WAREHOUSES:

137 BARNATYNE AVE., WINNIPEG

P. O. Box 765.

Tel. 1341.

# S. Greenshields, Son & Co.

Wholesale . . . MONTREAL

**DRY GOODS  
MEN'S FURNISHINGS  
CARPETS, ETC.**

Winnipeg Sample Rooms:  
412-414 McIntyre Block  
Represented by—R. B. GALLAGHER, G.  
M. NEWTON, A. C. RUSSELL.

# HODGSON, SUMNER & CO.

Importers of Domestic, British, French,  
German and American

# Dry Goods Men's Furnishings

SMALL WARES  
AND FANCY  
GOODS

347 and 349 St. Paul Street  
Montreal

Represented in the West by

A. C. McLAUCHLAN, Box 330, Winnipeg

# HICKS BROS. & Co.

TEA IMPORTERS

And Wholesale Dealers in

Fancy Groceries, Butter, Eggs, Cheese

Packers of Britannia, Beaver and Buffalo Brand of Packaged Tens and Sole Agents for These, Lipton's Package Teas for Manitoba, N. W. Territories and British Columbia.

1244 Princess St., Winnipeg

Factory,  
WINNIPEG, MAN. YARMOUTH, N. S.

# The Redding Shoe Mfg. Co.

SPECIALTIES:

**MEN'S CRAIN CONGRESS AND  
HARVESTERS**

**GRAIN AND CRONE KIP  
BLUGHERS AND BALS.**

**BOYS' AND YOUTHS' SCHOOL  
BOOTS**

Our Woman's, Misses and Children's Lace and Button Boots are the best ever shown in Manitoba for wearing qualities and values.

Travelers are now out showing spring samples.

All small orders promptly attended to. A Trial Solicited.

WAREHOUSES:

137 BARNATYNE AVE., WINNIPEG

P. O. Box 765.

Tel. 1341.



## MANITOBA.

The Kilgour-Rimes Company Ltd. of Winnipeg, is increasing its capital from \$50,000 to \$100,000.

S. D. Barr & Son have succeeded A. J. Calhoun in the grocery business carried on by the latter at Neepawa. The Royal Trust Company, of Quebec, is seeking power from the provincial government to do business in this province.

The Manitoba Gazette contains a proclamation calling the legislature to meet on Jan. 8, for the dispatch of business.

W. H. Milton has opened a new store at 405 Ross street, Winnipeg, and has added cake and confectionery to his bread business.

Elmer & Borland, general merchants, Steinbach Station, have made an assignment to A. Davidson, for the benefit of their creditors.

The Great West Hall Insurance Company is applying for a charter to do business in Manitoba. The class of risks taken will cover everything but life insurance.

The Manitoba Institute of Engineers and Architects is applying for a charter to the federal legislature for the purpose of regulating the practice of these professions.

The Prudential Life Insurance Company has the name of a new concern which is applying for a charter from the provincial legislature. The application is made from Carleton Place.

It is reported that A. Miller has succeeded A. Hunter in the livery business which the latter has been carrying on at Strathclair. Hunter will engage in the same line of business at Russell.

The Northern Lumber Company will erect sawmills at Fish Creek and Pine River, in Northern Manitoba. Logs are now being taken out for the next summer cut of these mills. Machinery is now on the way.

The National Fire Insurance Company is applying to the provincial legislature for a charter enabling it to issue a general fire, hail, lightning and storm insurance in Manitoba. The application is dated at Brandon.

H. A. Scarlett, the Massey-Harris agent, has been charged before a police magistrate on Monday with the amount of funds of the company to the amount of \$1,000. He was committed for trial at the next assizes.

A Winnipeg butcher was fined on Monday at the police court for having in his possession the carcasses of several dead jumping deer, the season being closed for such game. The carcasses were used for decorative purposes.

Oldfield & Gardner, agents, Winnipeg, are adding a farm land department to their business with J. W. Briggs as manager. Mr. Briggs has for many years been connected with the Canadian Pacific Railway and department at Winnipeg and is well posted in farm land business.

Notice has been given of application for a Bill incorporating "the Suburban Rapid Transit Co.," with authority to build a street car and trolley railway from Winnipeg to Headingley. The application is made in behalf of Mr. J. M. Thompson, who is representing the West-Ingleside Electric Co., of Philadelphia.

The Selkirk board of trade has elected the following officers to preside over its affairs during the coming year: President, Capt. Wm. Robson; vice-president, F. E. Stevens, banker; secretary, F. A. Gemmel, and a council of sixteen members. At a meeting to be held on January 7th, by-laws will be considered.

A. G. and J. Cunningham, general merchants, Poplar Point, have made an assignment to C. E. Hewson for the benefit of their creditors. They have been out of active business for some time and have no stock. Their assets consist of book debts and real estate. It is expected that the creditors will realize well out of this estate.

One Winnipeg real estate man estimated that during the past season 200,000 acres of land has been changed hands within a radius of 50 miles of Winnipeg. The principal purchasers have been American speculators, who will endeavor to settle these lands, and this is said to be the only way

in which they can make their investments profitable. The prices paid for the land were between \$3 and \$7 per acre, the average running to about \$4.50.

W. H. Bell, dry goods merchant, Winnipeg, made an assignment on Saturday to A. Davidson, for the benefit of his creditors. This business is one of the oldest in the city, and was, until recently, carried on in a small building on the corner of Grand and Main street. Later the premises have been on Portage Ave., and the move to that location was not a bad one for the business. Competition from the big departmental stores has been keen, and the results disastrous to the smaller trader. Another contributing factor in this failure is the fact that about two years ago Mr. Bell had the misfortune to lose his wife, and he has not yet been able to get on his feet. It has incapacitated him for business. It is understood that an eastern dry goods house has been let in for by this failure, although the list of creditors and amounts involved is not yet complete. The estate will yield a very poor dividend, as the stock is run down, and consists largely of goods which are not fresh nor up-to-date.

Fire broke out at Portage in Prairie Street on the morning of Jan. 2 in the Grand Central hotel. A gale of wind was blowing and the fire spread rapidly. The following were burned out: Grand Central hotel and contents; A. W. Bailey, harness and boot maker; J. Costigan, confectionery and fruiter; H. S. Altin, auctioneer; Geo. Ross, tailor; J. Miller, barber; J. E. Howe, photographer; B. A. St. John, Jeweller; C. A. Newman & Bro., grocer and liquor. Besides the hotel the Newman block is the principal building burned. Total loss is placed at over \$20,000. Considerable stock was saved. Insurance as follows: T. J. and J. M. Brown, \$2,000 in Norwich; \$2,000 in Canadian Fire Insurance Co.; B. A. St. John, \$4,000 in the London Fire Insurance Co.; A. W. Bailey, \$3,400 in the Canadian Fire Insurance, \$700 in the London, and \$100 in the Manchester; G. N. Hart, \$250 in the Anglo-American; J. E. Howe, \$100 on stock in Anglo-American; \$750 in Western Insurance Co.; A. J. Patterson, Martin & Curtis, \$400 in Equily and Manchester; A. Laurer's block, \$2,000 in the Queen's; \$1,750 in the Western, \$900 in the Dominion of Brooklyn; Central hotel, \$2,000 in the Canadian Fire Insurance Co.; \$3,500 in the Royal and Mercantile; \$2,500 in the Scottish National Union; John Costigan, \$2,000 in the Scottish National Union; \$300 in the Canadian Fire Insurance Co.; \$200 on

plano, and \$500 in another company. Dr. Lundy, \$450 in the Canadian Fire Insurance Co. Total, \$29,300.

## ASSINIBOIA.

R. E. Baxter has bought out the harness business of E. McCormick at Moose Jaw. McCormick moves to Calgary.

## ALBERTA.

Clifton Bros. have bought the butchering business of J. W. Howard at Edmonton, and will continue it in their own name.

J. J. Milton and W. H. Stephens have purchased the Royal Hotel at Strathcona, and will conduct it in future. The house will be thoroughly renovated and refurbished.

The Strathcona Plumber, in a review of the building improvements in that town during the past year, estimates the total value at \$80,000. The list includes a new electric light plant, which cost \$10,000; fire apparatus and tanks, costing \$4,000; street improvements costing \$2,500; town hall, \$2,200; church buildings costing \$6,000; Frackman & Ker mill, \$2,500; and Edmonton Milling Co., \$1,000.

The settlers in township 27, forty miles northwest of Edmonton, are petitioning for a post office. The first settler went into this township only two years ago and now there are twenty-five families. They are almost all from the States, from Minnesota, North Dakota, and Wisconsin. As yet this is the farthest north-westerly settlement, but as the township further back have been surveyed no doubt they will soon be occupied as the country is very good.

## NORTHWESTERN ONTARIO.

Mrs. Margaret Couiter has opened a general store in north Devlin, Rainy River district.

E. G. Hall & Co., dry goods, hat Portage, were burned out on Jan. 3. The stock is a total loss. Valued at \$25,000. Hall & Co. occupied premises in the buildings belonging to A. Carmichael. The following other occupants of the buildings suffered loss: Dr. Marshall, dentist, burned out; Jas. Courtney, billiard, damaged by smoke and water; Jas. Grove, barber; Dr. Schartz, dentist; Dr. Chapman's office, damaged; White & Manahan's block and stock slightly damaged. Carmichael had \$5,000 insurance on the buildings.

"Yes, he escaped on a technicality." "I understood it was a hauler."

## British Columbia Mining.

The Alabama group, near Nelson, Wash., has resumed shipments of ore to the Granby smelter, at the rate of four tons daily.

The B. C. m. Boundary district, has suspended shipments for a time, the force being cut down from 77 men to 33, the present number.

It is stated that the owners of the ore smelter at Trail will add a lead refining plant to the present plant. Work is to commence immediately.

The management of the Snowshoe mine, Phoenix, has decided to sink a shaft to a depth of 300 feet, which will be the main working shaft of the property.

The Greenwood and Nelson smelters are sending about 35 tons of matte daily to Grand Forks to be treated at the new Granby copper converter.

The school of mines, which was carried on at Rossland last winter, under the patronage of the provincial government, will not be re-opened this winter.

The White Bear Mining Company, of Rossland, has placed an order for a new hoist to be installed at its mine in the early date. The company's intention, it is understood, is to sink to the 700-foot level as rapidly as possible.

The Granby Mining and Smelting Company has taken an option for \$100,000 on the Seattle group of five claims owned by Robert Clark, and situated on the north fork of Kettle river. Development work will be started immediately.

Slocan Drill: Good news has come to the owners of silver-lead properties in the Slocan. A reduction of about 20 per cent in treatment charges has been agreed on by the smelters, to go into effect on the new year. On the present basis of \$19 per ton, the new rates will show a reduction of from \$3 to \$4. The reduction made will act as a partial offset to the cut in the prices of silver and lead.

The Granby smelter, at Grand Forks, has closed down for four or five days to enable the connections to be made between the blowers and the two additional furnaces now being installed. The enlarged plant is being doubled or increased by a capacity of 1,400 tons daily. The new converter plant for making blister copper will treat daily from 100 to 150 tons of matte, the product of the Granby and other British Columbia smelters. The enlargement of the plant now being effected will result in increasing its pay roll by over a hundred new hands.

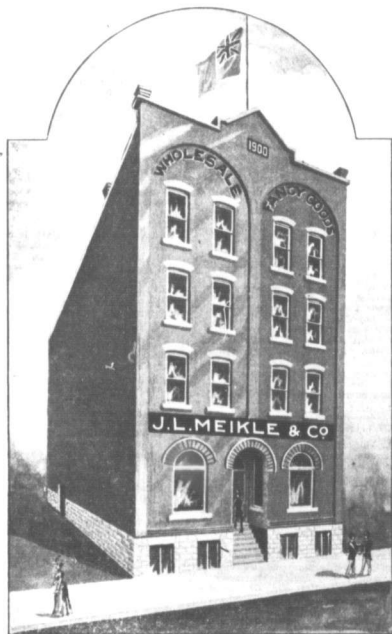
# The Strongest Line of Felt Shoes on this Continent

Our new line of Felt Shoes manufactured under our personal supervision and sold EXCLUSIVELY by us, are better value than any felt shoes ever before offered in this market. These, combined with our famous **ALFRED DOLCE and CANADA** brands, complete the strongest line of felt footwear on this continent. EVERYTHING you need in felt footwear, and at prices that means a saving of money to the careful buyer.

My salesmen will call on you at an early date. Kindly inspect our values.

**ALFRED DOLCE and CANADA**  
Princess Street, Winnipeg.

# Part of Interior and Exterior of J. L. Meikle & W



J. L. MEIKLE & CO., WHOLESALE FANCY GOODS.  
Port Arthur, Ontario, Canada.

## DEPARTMENTS

- Fancy Toilet Soaps  
Perfumes Combs  
Brushes  
Pipes Pocket Books  
Brooms  
Dolls Toys Games  
Paper Envelopes  
Fancy China Silverware Jewellery  
Albums Walking Sticks  
Flags Music Instruments  
Etc. Etc.

## TRAVELLERS

now on the road with Import and

## Spring Samples



Part of Sample and Stock Room, 1st Floor, J. L. Meikle & Co.

# Wholesale Fancy Goods House, Port Arthur, Ont.

EVERY DEALER

should, in their own interest  
see the

Big Assortment



Part of Sample and Stock Room, 2nd Floor, J. L. Meikle & Co.



Part of Stock Room, 3rd Floor, J. L. Meikle & Co.

They will see

Money=  
making  
Goods

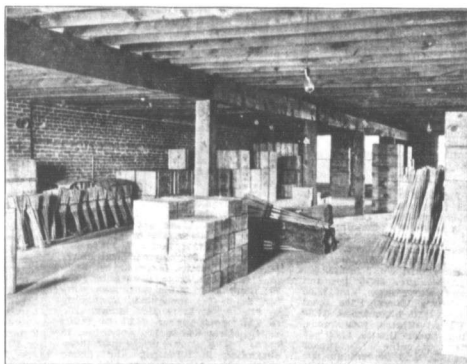
that will surprise you

Wishing our numerous customers  
prosperous 1902  
with thanks for past favors

We remain

Your stock suppliers

J. L. Meikle & Co.



Part of Stock Room, 4th Floor, J. L. Meikle & Co.





Toronto Wholesale Trade.

Special to The Commercial. Toronto, Jan. 4. Dry Goods—There is a better demand for cottons, linens and white goods generally...

Hogs and Hog Products.

Special to The Commercial. Toronto, Jan. 4. Hog products are in good demand and firm in sympathy with hogs...

Toronto Grain and Produce.

Special to The Commercial. Toronto, Jan. 4. Grain deliveries are light, especially of winter wheat, some of which are getting cleaned up...

20 to 60c per pair; spring ducks, 60 to 90c; turkeys, 9 to 10c; geese, 8 to 9c per lb.

Montreal Grain and Produce.

Montreal, Jan. 4. The butter market is steady. Dairy is worth slightly more than a week ago...

Special to The Commercial. Montreal, Dec. 31. Receipts at the East End abattoir yesterday included 500 head of cattle and 200 head of hogs...

Thursday's Market.

Montreal, Jan. 3. Receipts at the east end abattoir yesterday were 400 cattle and 100 sheep and lambs on track...

Toronto Live Stock Market.

Special to The Commercial. Toronto, Jan. 4. Receipts at the stock market yesterday were 83 cars, including 1,372 cattle, 610 sheep and lambs and 1,000 hogs...

Duluth Wheat.

Duluth, Dec. 30—Closing prices: Dec. 70 1/2; May 79 1/2; 1 hard 78 1/2; 1 northern 77 1/2...

Lamb—Also were higher, selling at \$3.75 to \$4.50 per cwt.

Friday's Market.

Toronto, Jan. 5. Receipts at the stock market yesterday were 91 cars, including 1,300 sheep, 610 head of cattle and 1,000 hogs...

Chicago Board of Trade Prices.

Chicago, Dec. 30—Closing prices: Wheat Dec. 75 1/2; May 82 1/2; 1 hard 81 1/2; 1 soft 80 1/2...

New York Wheat.

New York, Dec. 30—Closing: Dec. 80 1/2; May 87 1/2; 1 hard 86 1/2; 1 soft 85 1/2...

Minneapolis Wheat.

Minneapolis, Dec. 30—Closing prices: Dec. 70 1/2; May 78 1/2; 1 hard 78 1/2; 1 northern 77 1/2...

London Sugar Market.

Special to The Commercial. London, Jan. 3. December option 2 1/2 lower at 6d.

Liverpool Cattle Market.

Special to The Commercial. Liverpool, Jan. 3. Canadian cattle in quoted, sales at 12 1/2 to 13c per pound, estimated dressed weight.

Liverpool Cheese Market.

Special to The Commercial. Liverpool, Jan. 3. Finest Canadian cheese, white, 4 1/2d per lb.

New York Money.

Prime mercantile paper, 6 1/2%; 60 day, Sterling exchange firm at 4 1/2%; 67 for demand, and at 4 3/4% for sixty days.

Bank Clearances.

The following are some of the weekly clearings as compiled by Bradstreet's office: Increase and decrease, Montreal, \$1,234,545, increased \$50, Toronto, \$12,345,678, increased \$100,000.

Winning Closing Wheat.

No. 1 hard cash wheat closed on Monday at 72 1/2c; No. 1 northern at 69 1/2c, and 2 northern at 66 1/2c.

London Sugar Market.

Special to The Commercial. London, Jan. 3. December option 2 1/2 lower at 6d.

Liverpool Cattle Market.

Special to The Commercial. Liverpool, Jan. 3. Canadian cattle in quoted, sales at 12 1/2 to 13c per pound, estimated dressed weight.

Liverpool Cheese Market.

Special to The Commercial. Liverpool, Jan. 3. Finest Canadian cheese, white, 4 1/2d per lb.

New York Money.

Prime mercantile paper, 6 1/2%; 60 day, Sterling exchange firm at 4 1/2%; 67 for demand, and at 4 3/4% for sixty days.

Bank Clearances.

The following are some of the weekly clearings as compiled by Bradstreet's office: Increase and decrease, Montreal, \$1,234,545, increased \$50, Toronto, \$12,345,678, increased \$100,000.

British Stocks.

London, Jan. 23—4 p.m.—Consols for money, 101 1/2; 2 1/2s, 107 1/2; 3 1/2s, 118 1/2; 4 1/2s, 121 1/2.

Liverpool Prices.

Liverpool, Jan. 3.—Closing—Wheat, steady; No. 2 red, western white, 12 1/2c; No. 1 northern, 12 1/2c.

Chicago Live Stock.

Chicago, Jan. 3.—Cattle, steady; cow and calf, 12 1/2c; 2 yearling, 12 1/2c; 3 yearling, 12 1/2c.

The Canadian Manufacturers Association.

Wood is in better demand at Minneapolis and 5c per pound higher.

Banbury, Gourley & Banbury.

It was reported from London, England, by cable, that the private banking and lumber business carried on by R. W. Gibson at Wolsley, Assa.

It was reported from London.

It was reported from London, England, by cable, that the private banking and lumber business carried on by R. W. Gibson at Wolsley, Assa.

It is stated that the Canadian Pacific Railway Company.

is seriously considering the construction of a double track from Winnipeg to Fort Arthur as one of its best interests in the year 1902, and also the construction of a new station at Winnipeg.

Both of these improvements are badly needed.

On Saturday night last, Spencer's big departmental store in Detroit was gutted by fire and damage done to the extent of a quarter of a million dollars.

On Saturday night last, Spencer's big departmental store in Detroit was gutted by fire and damage done to the extent of a quarter of a million dollars.

carried by the firm was saved from destruction by fire and water, and it was with difficulty that the fire could be confined to the building in which it originated.

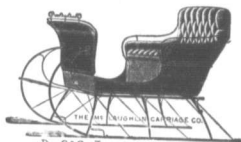
The building amounted to \$1,000,000.

The building amounted to \$1,000,000.



# The Beautiful Snow

about which the poet sang is not more pleasing to the experienced observer than are our up-to-date Cutters. The first thing needed to enjoy the snow with comfort is a



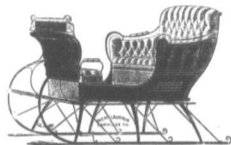
No. 202. Jarvis - A Young Man's Cutter

## McLAUGHLIN CUTTER

We have the largest and finest stock of Cutters ever exhibited here.

Dealers who have not placed their orders for Carriages for spring should see our samples and get our prices.

Best material, best workmanship and latest designs only in the McLaughlin vehicles. Largest factory in Canada.



No. 99, Premier Stage.

### The McLAUGHLIN CARRIAGE Co. Ltd.

Warehouse: 141 Princess St., Winnipeg

## JAS. MCCREADY & CO. LIMITED

WHOLESALE . . .

Boot and Shoe Manufacturers

MONTREAL, QUE.

W. WILLIAMS, Agent

## Winter Overcoats



We have a large and well assorted stock of FALL and WINTER OVERCOATS, READY-MADE CLOTHING, GENTS FURNISHINGS, and SMALL WARE. When in the city call and see our goods. They will satisfy you. Mail orders given prompt attention.

## EASTERN CLOTHING HOUSE

J. GENNER, Prop.

223 Alexander Ave. Winnipeg

## The W. H. Malkin Co. LIMITED.

Importers and Wholesale Grocers

CONSIGNMENTS OF DAIRY BUTTER SOLICITED, HIGHEST PRICES REALIZED, PROMPT RETURNS MADE.

137 Water St., - VANCOUVER, B.C.

## T & B PLUG AND CUT TOBACCO

Try the new fours. They are giving us tire satisfaction. Pays the retailer a handsome profit.

THE GEO. E. TUCKETT & SON CO., LTD HAMILTON

TEES & PERRSE, Agents, Winnipeg.

To those who have not been getting

# OGILVIE'S ROLLED OATS

We would suggest your Insisting on getting OGILVIE'S—and no other.

They are the best ever made, being so pronounced by all who are using them. Made from selected white oats.

DELICIOUS FLAVOR

FREE FROM HULLS

Assurance in force over - \$30,000,000  
Assets - - - - - 5,500,000  
Annual Income - - - - - 1,200,000

"A policy holder feels himself a subject for the most sincere congratulation when he sees that his insurance is carried at a lower cost to himself than it could be carried in any other company, and that the institution in which he has laid up provision for his family exceeds all others in liberality of its dealings with its Policy Holders."

## The Mutual Life ASSURANCE CO. OF CANADA

Head Office, Waterloo, is THE COMPANY above referred to.

P. D. MCKINNON, Prov. Manager, Winnipeg

## J. S. LANGLOIS & CO.

Manufacturers of High-Class, Fine and Medium Grade

## BOOTS and SHOES

156 Charost Street

QUEBEC

Our representative for Manitoba, the Territories and British Columbia is Mr. J. H. GLASS, who will call upon you in due time.

STATISTICAL WHEAT REPORT.

WHEAT IN CANADA.

Stocks of wheat in Canada at principal points of accumulation are reported as follows:

Montreal	35,000
Toronto	200,000
Oshawa	251,000
Depot Harbor, Ont.	505,000
Kingston	80,000
Fort William, Fort Arthur and Keweenaw	2,170,000
Winnipeg	270,000
Manitoba elevators	3,930,000
Total Dec. 14	12,745,000
Total previous week	12,775,000
Total a year ago	8,988,000

**BRADSTREET'S BALANCE OF STOCKS**  
Total stocks in the United States and Canada, east of the Rocky Mountains, as reported by Bradstreet's, are 94,580,000 bushels, as against 94,410,000 bushels, according to Bradstreet's report.

Total stocks in the United States and Canada, west of the Rocky Mountains, according to Bradstreet's report. Stocks of wheat at Pacific coast ports on Dec. 1, were 7,278,000 bushels.

THE VISIBLE SUPPLY.

The Chicago visible supply statement of stocks in the United States and Canada, east of the Rocky Mountains, for the week ending Dec. 28, was 58,616,000 bushels, being a decrease of 127,000 bushels for the week. A year ago the visible supply was 61,408,000 bushels, two years ago 52,201,000 bushels, three years ago 25,853,000 bushels, five years ago 24,561,000 bushels.

STOCKS OF OATS AND COHN.

The visible supply of oats in the United States and Canada, east of the Rocky Mountains is 5,293,000 bushels, compared with 4,800,000 bushels, two years ago. The visible supply of corn is 11,252,000 bushels, compared with 10,850,000 bushels, a year ago, according to the Chicago statement.

WORLD'S WHEAT STOCKS.

Stocks of wheat in America and Europe for a series of years, were as follows—Bradstreet's report:

1901	107,000,000
1900	110,000,000
1899	109,000,000
1898	109,000,000
1897	127,000,000
1896	172,000,000
1895	185,000,000

WHEAT MOVEMENT.

The following table gives the receipts of wheat at the four principal United States spring wheat markets, from the beginning of the crop movement, Aug. 1, 1901, to date, compared with the same period of last year.

Minneapolis	51,119,529	41,204,259
Milwaukee	214,982	4,285,920
Des Moines	33,812,985	12,912,618
Chicago	21,710,114	20,010,544
Total	129,867,625	80,735,472

The following table gives the receipts of wheat at the four principal United States winter wheat markets, from the beginning of the crop movement, July 1, 1901, to date, compared with the same period of last year.

Toledo	5,775,054	7,053,161
St. Louis	14,242,151	15,222,915
Detroit	2,884,920	2,155,284
Kansas City	15,957,354	26,432,917
Total	38,861,508	50,745,077

Winnipeg Prices a Year Ago.

Following are Winnipeg prices this date last year:

- Wheat—Cash No. 1 hard closed at 81c in store Fort William.
- Flour—Jobbing price per sack: Patent, 81c; best bakers, 81.5c.
- Milled—Bran, \$1.00 per ton, shorts, 81c per ton delivered.
- Oats—Carlots on track, Alberta 35c/36c; Man., 34c/35c.
- Barley—64c/65c per bushel for cars of oatmeal—\$1.50 per 80 lb. sack.
- Barley—64c/65c per bushel for cars of feed on track mailing barley, 29c/30c.
- Corn—in carlots, 44c/45c per bushel of 50 lbs.
- Butter—Dairy, 14c/17c; creamery 20c per lb. at the factories.
- Eggs—60c/62c per dozen.
- Eggs—20c for Manitoba fresh, less expressage.
- Potatoes—Farmers' loads on the street, 40c per bushel.
- Feed—Sourc for city dressed; country, 44c/45c per lb.
- Poultry—Dressed chickens, 8c; ducks, dressed, 9c; geese, 9c; turkeys, dressed, 11c.
- Game—Wild ducks, 25c/30c per pair; rabbits, 10c per pair.
- Hides—50c/52c for frozen stock, less 5 lbs. tare.
- Wool—50c/52c for unwashed fleece.
- Seaca Root—34c/35c.
- Baled Hay—\$7.68 per ton on cars.
- Livestock—Cattle, 24c/25c; sheep, 44c/45c; hogs, 5c.

without—Ohio State Journal.

Grain and Milling Notes.

Threshing is still in progress in the neighborhood of Stratford, Man. The British war office has, through Hon. Sydney Fisher, placed an order with the late of the Woods Milling Company for 1,000 tons of Keweenaw flour, for South Africa. The order is equal to 12,500 barrels.

Mr. Parker, of Riley, Parker & McVicar, grain merchants, of Winnipeg, who was seriously injured about a fortnight ago at the Prince Albert elevator, has had his leg amputated below the knee and is now recovering at his home in his condition is precarious.

F. H. Peavey, head of the great elevator company of the Northwestern States, which bears his name, died at Chicago on Monday of pneumonia. Mr. Peavey moved from Sioux City, Iowa, to Minneapolis, about fifteen years ago, and has since then made his home in that city. He was well known among financiers and business men throughout the United States. A fund for widows in Minneapolis, and for every dollar deposited by any widow in the savings bank Mr. Peavey added one dollar to the fund, was the holder of one of the largest life insurance policies ever written, the amount being \$1,000,000. It was taken out three years ago in favor of the Peavey company.

Manitoba Wheat Stocks.

There were 2,042,281 bushels of wheat in store at Fort William on Dec. 28. Receipts for the week were 423,187 and shipments 127,000. A year ago stocks in store at Fort William were 1,524,000 bushels. Two years ago there were 2,817,000 bushels. Stocks in store at Fort William, Keewatin, Winnipeg, and interior points are estimated approximately at 12,746,000 bushels, compared with 6,500,000 bushels a year ago, 9,000,000 bushels two years ago, and 7,850,000 bushels three years ago.

FINANCIAL

WINNIPEG BANK CLEARINGS.

Returns for the Winnipeg Clearing House for the week ending Thursday, show as follows:

Clearing Jan. 2, 1902 ..... \$3,755,923  
 Corresponding week, 1901 ..... 2,200,200  
 Corresponding week, 1900 ..... 2,967,812

The monthly totals are as follows:

1901	100,000,000
1900	100,000,000
1899	100,000,000
1898	100,000,000
1897	100,000,000
1896	100,000,000
1895	100,000,000

Total \$127,711,158 \$109,956,792 \$107,798,514

FINANCIAL NOTES.

The November statement of the chartered banks of Canada has just been issued. It shows that the note circulation contracted a little during the month, but it is still nearly \$0,000,000 larger than last year. Public deposits increased \$4,000,000 during the month, bringing the total to \$394,053,000, and is \$10,000,000 greater than a year ago. The demand for funds is largest of any month. Current loans in all centres are larger than a year ago by \$12,000,000 larger than a year ago.

The Canadian Pacific Railway Company's statement of earnings and expenses: Gross earnings, November, \$1,825,853.47; operating expenses, \$2,142,565.33; net profits, \$1,440,878.14. Gross earnings July 1 to Nov. 30, 1901, \$19,350,517.17; operating expenses, \$17,737,929.20; net profits, \$6,692,148.11. In November, 1900, the net profits were \$1,082,518.32, or from July 1 to November 30th, 1900, there was a net profit of \$5,141,272.24. The gain in net profits over the same period last year is therefore, for November, \$375,329.82, and for July 1st to November 30th, \$1,520,875.87.

The Duquesne Mining Co. is registered as an intra-provincial company, with headquarters at Revelstoke.

The Commercial Men.

Geo. N. Jackson, western manager for Walter Woods & Co., has returned from the East. He is busy this week arranging for opening in new premises in Winnipeg, the building lately occupied by J. Y. Griffin & Co. having been secured by Mr. Jackson for his firm.

S. D. R. Fernie, western manager for the Hudson Bay Knitting Co., has already started to push business for the fall trade of 1902, in the warm winter specialties manufactured by his company. His staff of Geo. road this season is composed of Geo. R. Hilton, C. E. Harvey, D. Cameron, S. M. James and A. E. Shand.

E. M. Greenfield, traveler for Kelly, Douglas & Co., Vancouver, met with a severe accident last week while driving with his family to Lumbly. His wagon struck a culvert, and Mr. Greenfield was thrown over the dash board, alighting on his face. His nose was broken, and he sustained other nasty cuts and bruises, which confined him to his bed at the Kalamalka for several days.

The robbery of the Bank of Liverpool was effected, that the Moodyville standing in with a gang of forgers with whom his sporting proclivities had brought him into contact. Pitch still defies whoever touches it—Finch Chronicle.

A cablegram received from London, England, states that the Moodyville lumber mills, on the north shore of Burrard Inlet, opposite Vancouver, have been sold. The Moodyville property, comprising the mills, tugs, canals, railway and extensive timber limits, is one of the most valuable in British Columbia.

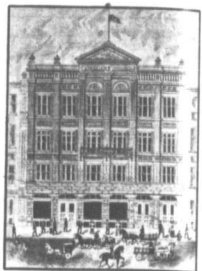
The big sawmill men of British Columbia have at last succeeded in reaching a definite agreement among themselves regarding prices and a new official list has been published which it is their intention to rigidly adhere to. This association in the name of which this new list has been published is known as The British Columbia Lumber and Sawmill Association. It is the first of its kind in all business as far east as Manitoba.

THE DOMINION ELEVATOR CO.

GRAIN EXPORTERS  
 OFFICE: MILLERS OF No. 1 Manitoba Hard Wheat  
 GRAIN EXCHANGE WINNIPEG  
 M. McLAUGHLIN & CO  
 ROYAL DOMINION MILLS, TORONTO.  
 CAPACITY, 100 BBL'S DAILY

KIRKPATRICK & COOKSON  
 Montreal.  
 Consignments of Grain and Manitoba Produce solicited. Dressed Hogs wanted. F. O. B. Orders of W. Eat, barley, etc. requested. Established 1880, Manitoba Grain Code used.

The Northern Elevator Co.  
 LIMITED.  
 HEAD OFFICE WINNIPEG.  
 BRANCH OFFICES: NEW YORK, LONDON, ETC.



WINNIPEG GRAIN AND PRODUCE EXCHANGE  
 WM. MARTIN, President.  
 C. A. YOUNG, Vice-President. CHAS. N. BRILL, Secy-Treas.

JAS. CARRUTHERS & CO.  
 GRAIN EXPORTERS  
 MONTREAL TORONTO WINNIPEG

H. D. METCALFE  
 GRAIN EXPORTER  
 19 STOCK EXCHANGE WINNIPEG MONTREAL  
 Direct connection with European markets.

THE WINNIPEG GRAIN EXCHANGE CO.  
 LIMITED.  
 GRAIN EXPORTERS  
 OFFICE: GRAIN EXCHANGE, WINNIPEG.

ROBT. MUIR & CO.  
 GRAIN DEALERS AND MILLERS  
 SHIPPERS OF WHEAT, OATS, BARLEY, FLAX, FLOUR, BRAN, SHORTS, ETC.  
 Buy or sell on commission. Before buying or selling grain in car lots, write us for quotations. Advances made on consignments. Licensed and bonded.

WHEAT  
 All grades handled on commission. We make liberal advances on car lot shipments, get best prices, and make prompt returns.  
 THOMPSON, SONS & CO.  
 GRAIN COMMISSION MERCHANTS  
 WINNIPEG  
 Licensed and Bonded under Manitoba Grain Act.

# THE HIGHEST STANDARD OF EXCELLENCE

**3**  
Trade Winners



**3**  
Trade Winners



**3**  
Trade Winners



They delight and satisfy consumers For sale by all Winnipeg Wholesale Grocers.

**E. NICHOLSON**

WHOLESALE AGENT  
115 Bannatyne St. East, Winnipeg

## Everything for Power

**WINNIPEG MACHINERY & SUPPLY CO.**  
Wholesale Dealers

The Laurier Engine Co., Montreal, Engines, etc.; Olds Motor Works, Gasoline Engines for all purposes; The Hamilton Iron Tool Co., Iron-working Tools; Cowan & Co., Woodworking Machinery; The Ohio Pump Co., Canton, Ohio, "Ohio" Steam Pumps, for all purposes; Flour Mills



and Elevator Machinery and Supplies; Saw Mill Machinery; Chisholm, Boyd & White Co., Boyd's Patent Brick-making Machinery; The United Electric Co., Toronto, Electrical Motors, Dynamos, and Supplies; Shafting, Pulleys and all Accessories

Second Hand Machinery Bought, Sold or Exchanged.  
WHITE IS  
**179 Notre Dame Street East, Winnipeg, Man.**

## Excelsior Cement

Makes the strongest and most desirable walls and floors for buildings. Full descriptions.

**Manitoba No. 1 Hard Wall Plaster**—Up-to-date Plaster for finishing walls. Made in Manitoba by

**THE MANITOBA UNION MINING CO. Ltd.**  
Office—214 Grain Exchange, Winnipeg

## SOURIS COAL

The best and cheapest fuel in the market.

Shipped direct from mines at Roche Perce to all points in Manitoba and the Territories.

**Souris Coal Mining Co. Ltd.**  
Winnipeg Office

P.O. Box 744. 447 MAIN ST.

## ACETYLENE

THE 20TH CENTURY LIGHT



The Ontario Double Generator made in all sizes from ten lights up. Guaranteed to give satisfaction. Sold on trial Shaffer Barbers for sale.

**Northwest Acetylene Gas Co.**  
315 Princess St., Winnipeg

**THE W. E. SANFORD MF'G CO., LTD.**  
HAMILTON, ONT.

Wholesale  
**Clothing Manufacturers**

Offices and sample rooms in the Sanford block, Winnipeg, corner of Princess and Bannatyne streets, where a complete set of samples can always be seen.

Western representatives—H. Kite, W. Dunlop, Geo. Shaw, A. McAllister.

## FRANK LIGHTCAP

DEALER IN

**HIDES** PELTS, WOOL, **SENEGAL** Etc.

EXPORTER OF

**NORTHERN FURS**

Highest prices paid for consignments and returns made promptly. Write for circulars containing market reports and full quotations.

172-174 KING ST., WINNIPEG

P. O. Box 484.

HARRY LEADLAY ALL SON LEADLAY

## H. & A. LEADLAY

SUCCESSORS TO

Toronto Hide & Wool Co.

DEALERS IN

**HIDES, WOOL, SHEEP SKINS,**

**TALLOW AND RAW FURS**

Highest Market Prices Paid. Consignments Solicited.

298 Ross St. Winnipeg, Man.

J. L. Meikle & Co., wholesale fancy goods Port Arthur, beg leave to thank their hundreds of customers for their liberal support and wish them all a Merry Christmas and A Prosperous New Year.

# PIANOS

Williams, TORONTO      Ducharme, MONTREAL  
 Weber, NEW YORK      Bush &  
 Berlin, BERLIN      Goertz, CHICAGO

# ORGANS

Berlin, BERLIN      The famous self player  
 Goderich, GODERICH      The Apollo  
 Doherty, CLINTON      OF CHICAGO

Wholesale and Retail

Sewing Machines.—THE ELDRIDGE 'B'

**FORRESTER & HATCHER,**

Y. M. C. A. Building, Portage Avenue, - - - Winnipeg

## Wholesale

We supply all out of town merchants with a full line of

## Jewellery

at wholesale prices. Write for particulars.

**D. R. DINWALL Ltd.**

424 and 504 Main St., Winnipeg.  
 Sign of the Street Clock.

## A. CARRUTHERS & CO.

Dealers and Exporters of

**Hides, Wool, Sheepskins,  
 Tallow, Seneca Root  
 and Raw Furs**

Liberal advances made on shipments against Bill Lading, Wool Sacks, Hide Ropes and Taps furnished on application.

Office and Warehouse: 150-152 King St. WINNIPEG, MAN.

## WANTED

Local agents or travelling salesmen for Manitoba and the Territories, to handle a complete line of nursery stock, fruit trees, ornamental trees, seed potatoes, small fruits, etc. We grow special line of hardy Russian stock, adapted to cold districts. Sample cases, etc., supplied free. For terms apply now.

PELHAM NURSERY COMPANY,  
 Toronto, Ont.

N.B.—Special inducements to farmers who can only work part time at the business. Handsome catalogue free on application, which gives valuable information concerning ornamental and fruit stock.  
 P. N. Co.



## WANTED TO BUY

Moose, Elk, Cariboo  
 heads and raze birds  
 —heads and birds  
 mounted artistically.  
 For prices apply  
 to Alex. Calder, 600  
 Main street, Winnipeg,  
 successor to  
 Hine & Co. Taxidermist.

## F. WATERS

Importer and Dealer in

**PICTURES, PICTURE FRAMES,  
 MOULDINGS.**

Artist Materials a Specialty.

Country Orders Filled Satisfactorily.  
 278 Main St. . . . Winnipeg, Man.

## CEYLON TEA DIRECT

I am prepared to supply my Estate Tea and dispatch same direct to any of the principal towns of Canada, on most reasonable terms, to wholesale dealers, grocers or private individuals, who wish to procure any grade of "Pure Ceylon Tea" direct from the planter. I am also willing to correspond with any one wishing to take up the agency for my teas in any part of Canada or U. S. A.

For reference and information apply to G. C. Warren, wholesale tea importer, Mooseley, or direct to

DUDLEY E. WARREN,  
 Tea Planters, Avila wells, Ceylon.

# Ontario Glove Works

## JAMES HALL & CO.

BROCKVILLE, CANADA

OUR GOODS ARE RELIABLE

ESTABLISHED ABOUT 40 YEARS

We beg to advise the TRADE in Manitoba and the Territories west as far as Moose Jaw that D. E. Fraser is our only direct representative from our Factories and will call on the trade between Jan. 1st and March 15th with a complete range of up-to-date samples in Gloves and Mitts. Best values ever shown. See our special ECLIPSE heavy Mitt at \$4.50; also our WASH-

TR Glove. It is always a trade winner. We are showing an exceptionally cheap line of unlined Asbestos Gloves for 1902; nothing ever produced like them before. It will pay you to defer buying till you see Mr. Fraser.

All Spring Orders shipped promptly. Special discounts for 1902.

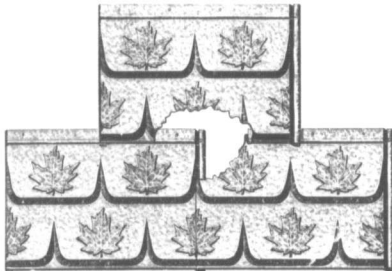
It will pay the close buyer to see our samples before placing an order

WINNIPEG BRANCH  
 148 PRINCESS STREET  
 SAME OLD STAND

## JAMES HALL & CO.

# METAL SHINGLE AND SIDING CO. Ltd.

PRESTON, ONT.



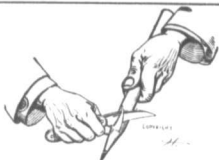
SAFE LOCK SHINGLES. This cut shows the locking device on all four sides.

MANUFACTURERS OF

SAFE LOCK SHINGLES  
METALLIC CEILINGS  
METAL SIDING, &c.

For prices and full particulars apply to

W. G. McMAHON, 246 McDermott St., Winnipeg



Coming to the Point.

Begin the New Year Right

SMOKE . . .

"Flor de Tom Lee"  
"Alhambra"  
"Magnificos"  
"T.L." or  
"Rosa Linda" Cigars

Variety enough to suit every taste. Made good on purpose for critical smokers.

**WESTERN CIGAR FACTORY**

WINNIPEG

T. LEE, Prop.

## LEADING COMMERCIAL HOTELS

### WINNIPEG

#### HOTEL LELAND

Headquarters for commercial men.  
CITY HALL SQUARE.

### DRYDEN, ONT.

#### DRYDEN HOTEL

A. R. HUTCHINSON, Prop.  
Headquarters for commercial and mining men and the general public.

### RAPID CITY

#### QUEEN'S HOTEL

THOS. EVOY, Prop.  
Headquarters for commercial travellers. Free bus meets all trains.

### BIRTLÉ

#### ROSSIN HOUSE

B. FENWICK, Prop.  
Good accommodation; telephone connection with the station; sample rooms; inside closet. Livery in connection.

### TREHERNE

#### LELAND HOTEL

W. F. LEB, Prop.  
First-class accommodation for commercial travellers.

### GLENBORO

#### QUEEN'S HOTEL

M. E. NEVINS, Prop.  
Best hotel on the Glenboro branch. Three large and first-class sample rooms.

### NAPINKA

#### HOTEL LELAND

B. HALLOQUIST, Prop.  
First-class in every department. Sample rooms. Every convenience for the travelling public. Opposite C. P. R. depot.

### DELOIRAINÉ

#### FALACE HOTEL

LAIRD & MCGARVEY, Props.  
New building, new furnishings, furnace heating, acetylene gas. First-class. Large sample rooms.

### MACGREGOR, MAN.

#### THE STANLEY HOUSE

E. WATSON, Prop.  
First-class accommodation for travellers. Commodious sample rooms. Livery and feed stable in connection. All kinds of teaming attended to.

### ELKHORN

#### HOTEL MANITOBA

W. J. DIXON, Prop.  
New building; new furnishings; furnace heating; acetylene gas. First-class. Large sample rooms.

### FLEMING

#### WINDSOR HOTEL

W. GEO. CLEVELLY, Prop.  
New management. Rates 125c. Renovated and refurnished. Commodious sample rooms. Heated by hot air. Livery and feed stable in connection. Inside closet.

### ROSTHERN

#### OCCIDENTAL HOTEL

H. A. McEWEN, Prop.  
New house. Up-to-date appointments.

### PLEASE NOTIFY.

Subscribers to The Commercial are requested to notify this office of any irregularity in the receipt of their paper.

### RED DEER, ALTA.

#### ALBERTA HOTEL

BEATTY & BRINDLE, Props.  
C and E dining hall, good sample rooms and every accommodation for commercial travellers and the general public.

### WETASKIWIN, ALTA.

#### CRITERION HOTEL

F. M. HAMILTON, Proprietor.  
New building, newly furnished, hot and cold baths, heated by furnace and lighted with gas; good sample rooms.

### STRATHCONA

#### STRATHCONA HOUSE

W. H. SHOPPAED, Prop.  
First-class. Opposite depot.

### EDMONTON

#### ALBERTA HOTEL

JACKSON & GRIERSON, Proprietors.  
Sample rooms. Free bus. Livery in connection.

### MACLEOD

#### MACLEOD HOTEL

THOS. WILTON, Prop.  
Good sample rooms and every accommodation for commercial travellers and the general public. Rates \$2.00 per day. Bus to and from all trains.

### PINCHER CREEK

#### HOTEL ARLINGTON

MITCHELL & DOBBIE, Props.  
New building, new and commodious bed rooms, parlors, bathrooms and sample rooms. Newly furnished. Heated throughout by hot air; lighted by gas. Electric bells in every room. Cuisine second to none; and the best stock of wines, liquors and cigars in Alberta.  
Miss Mitchell, Matron.

### CRANBROOK, B. C.

#### CRANBROOK HOTEL

JAS. RYAN, Prop.  
Large and convenient sample rooms and good accommodation for commercial men. Rates \$2.00 a day.

### NEW WESTMINSTER, B. C.

#### HOTEL COLONIAL

J. E. INSLEY, Proprietor.  
Special attention given to commercial travellers. Charges moderate.

### VANCOUVER

#### HOTEL LELAND

R. DOWSWELL, PROPRIETOR.  
Refurnished and remodelled. Rates 150c to \$2.00 per day. Long distance phone. One block from C. P. R. depot and steamboat wharves. W. E. Grigor, Manager.

### VICTORIA

#### HOTEL VERNON

JAS. PATTERSON, Mgr.  
Headquarters for commercial and business men. Free bus and sample rooms.

### KAMLOOPS

#### GRAND PACIFIC HOTEL

P. A. BARNHART, Proprietor.  
The best hotel in Kamloops. Ample accommodation.

### GREENWOOD, B. C.

#### IMPERIAL HOTEL

GRAHAM & FARRY, Proprietors.  
Headquarters for commercial travellers and all business men.

### PHOENIX, B. C.

#### THE VICTORIA HOTEL

B. C. Hotel Co., Ltd., B. TOMKINS, Mgr.  
Electric bells, electric lighted, furnace heated, finest liquors and cigars. Sample rooms.

WINNIPEG PRICES CURRENT

THE RIGHT PLACE. To advertise businesses for sale, partners wanted, travellers or clerks wanted, etc., is in The Commercial.

A GOOD OPENING FOR INVESTMENT.

FOR SALE OR RENT. The fine stone block at Grand Ave. and St. W. T. known as Skrine's Store.

WANTED.

A large wholesale home intends to establish a branch office in Canada, and desires manager for same.

FOR SALE.

Lumber Yard and Hardware Business in the village of Alexander.

FOR SALE.

The only Butcher Shop in Ponoka, Alberta. Doing a good business.

FOR SALE.

One good sawmill plant, newly built, capacity 15,000 feet.

WANTED.

To invest about \$3,000 or take a partnership in a well established and paying business.

GENERAL STORE FOR SALE.

General store business in Manitoba, stock light and well assorted.

WANTED! SEVERAL PERSONS OF character and good reputation in each state (one in this country required).

OVERALL CLOTHING

Advertisement for Overall Clothing featuring Union Brand Smocks and Shirts. Includes a logo with 'UNION TRADE MARK' and 'MADE IN CANADA'.

OUR GOODS ARE WELL MADE They will please the customer.

The Hoover Mfg. Co. Ltd. Maw's Block Winnipeg.

Advertisement for I. C. FELL & CO. DIE CASTERS. Specialties include Rubber, Steel and Brass. Stamp Mfrs. Address: St. West Toronto.

Isn't executive ability the secret of a large business? A head who can select competent heads of departments and make them responsible for their departments?

GROCERIES

Prices to retail dealers for ordinary use, with small discounts for cash or advance.

Table listing various grocery items such as Apples, Raisins, Potatoes, and other produce with their respective prices per unit.

Matchless

Table listing Matchless items like Telegraph, Telephone, and other electrical goods.

Meats

Table listing various types of meat including Beef, Pork, and Mutton.

Syrup

Table listing different grades of syrup such as Extra Right, Medium, and Common.

Sugar

Table listing various types of sugar including Extra Standard, Extra Grand, and Powdered.

Coffee

Table listing different grades of coffee such as No. 1, No. 2, and No. 3.

Beans

Table listing various types of beans including Split Peas, Navy Beans, and Lima Beans.

Spices

Table listing various spices such as Black Pepper, White Pepper, and Cloves.

Meat

Table listing various types of meat including Corned Beef, Canned Meat, and Ham.

Butter

Table listing different grades of butter such as Pure, Sterilized, and Sweetened.

Flour

Table listing various types of flour including Soft Spring, Hard Spring, and Patent.

Starch

Table listing different grades of starch such as Pure, Washed, and Bleached.

Soap

Table listing various types of soap including Castile, Toilet, and Laundry.

Tea

Table listing different grades of tea such as Choice, Medium, and Common.

Flour

Table listing various types of flour including Soft Spring, Hard Spring, and Patent.

Starch

Table listing different grades of starch such as Pure, Washed, and Bleached.

Meat

Table listing various types of meat including Corned Beef, Canned Meat, and Ham.

Butter

Table listing different grades of butter such as Pure, Sterilized, and Sweetened.

Flour

Table listing various types of flour including Soft Spring, Hard Spring, and Patent.

Starch

Table listing different grades of starch such as Pure, Washed, and Bleached.

Meat

Table listing various types of meat including Corned Beef, Canned Meat, and Ham.

Butter

Table listing different grades of butter such as Pure, Sterilized, and Sweetened.

Flour

Table listing various types of flour including Soft Spring, Hard Spring, and Patent.

Starch

Table listing different grades of starch such as Pure, Washed, and Bleached.

Meat

Table listing various types of meat including Corned Beef, Canned Meat, and Ham.

Butter

Table listing different grades of butter such as Pure, Sterilized, and Sweetened.

Flour

Table listing various types of flour including Soft Spring, Hard Spring, and Patent.

Starch

Table listing different grades of starch such as Pure, Washed, and Bleached.

Meat

Table listing various types of meat including Corned Beef, Canned Meat, and Ham.

Butter

Table listing different grades of butter such as Pure, Sterilized, and Sweetened.

Flour

Table listing various types of flour including Soft Spring, Hard Spring, and Patent.

Starch

Tea

Table listing different grades of tea such as Choice, Medium, and Common.

Meat

Table listing various types of meat including Corned Beef, Canned Meat, and Ham.

Butter

Table listing different grades of butter such as Pure, Sterilized, and Sweetened.

Flour

Table listing various types of flour including Soft Spring, Hard Spring, and Patent.

Starch

Table listing different grades of starch such as Pure, Washed, and Bleached.

Meat

Table listing various types of meat including Corned Beef, Canned Meat, and Ham.

Butter

Table listing different grades of butter such as Pure, Sterilized, and Sweetened.

Flour

Table listing various types of flour including Soft Spring, Hard Spring, and Patent.

Starch

Table listing different grades of starch such as Pure, Washed, and Bleached.

Meat

Table listing various types of meat including Corned Beef, Canned Meat, and Ham.

Butter

Table listing different grades of butter such as Pure, Sterilized, and Sweetened.

Flour

Table listing various types of flour including Soft Spring, Hard Spring, and Patent.

Starch

Table listing different grades of starch such as Pure, Washed, and Bleached.

Meat

Table listing various types of meat including Corned Beef, Canned Meat, and Ham.

Butter

Table listing different grades of butter such as Pure, Sterilized, and Sweetened.

Flour

Table listing various types of flour including Soft Spring, Hard Spring, and Patent.

Starch

Table listing different grades of starch such as Pure, Washed, and Bleached.

CURED MEATS, ETC.

Table listing various types of cured meats such as Corned Beef, Canned Meat, and Ham.

Smoked Meats

Table listing different types of smoked meats including Bacon, Sausages, and Corned Beef.

Meat

Table listing various types of meat including Corned Beef, Canned Meat, and Ham.

Butter

Table listing different grades of butter such as Pure, Sterilized, and Sweetened.

Flour

Table listing various types of flour including Soft Spring, Hard Spring, and Patent.

Starch

Table listing different grades of starch such as Pure, Washed, and Bleached.

Meat

Table listing various types of meat including Corned Beef, Canned Meat, and Ham.

Butter

Table listing different grades of butter such as Pure, Sterilized, and Sweetened.

Flour

Table listing various types of flour including Soft Spring, Hard Spring, and Patent.

Starch

Table listing different grades of starch such as Pure, Washed, and Bleached.

Meat

Table listing various types of meat including Corned Beef, Canned Meat, and Ham.

Butter

Table listing different grades of butter such as Pure, Sterilized, and Sweetened.

Flour

Table listing various types of flour including Soft Spring, Hard Spring, and Patent.

Starch

Table listing different grades of starch such as Pure, Washed, and Bleached.

Meat

Table listing various types of meat including Corned Beef, Canned Meat, and Ham.

Butter

Table listing different grades of butter such as Pure, Sterilized, and Sweetened.

Flour

Table listing various types of flour including Soft Spring, Hard Spring, and Patent.

Starch

Table listing different grades of starch such as Pure, Washed, and Bleached.

The death is announced of Edward Hart, the only surviving member of Hart, Montreal.

On Monday the leading Chicago authority on hide prices, Hide and Leather, quoted buff hides selling at 9 1/2c per pound.

There is a shortage of eggs in all wholesale markets throughout Canada. All efforts by buyers to secure sufficient quantities of eggs prove unavailing.

WOODEN WARE

Table listing various types of wooden ware including Pails, Buckets, and Tubs.

LEATHER

Table listing various types of leather goods including Harness, Saddles, and Boots.

This was announced on January 1 that the Manitoba land department will advance the price of land fifty cents per acre to go into effect at once.

This is the season of the year when the retail merchant should make preparation for thorough inventory of stock.



Canadian Pacific Railway

# EASTERN EXCURSIONS

Via the Canadian Pacific Railway.

Lowest Round Trip Rates TO ALL

## Ontario Points and Maritime Provinces

Good for Three Months. Stop-Over privileges East of Fort William.

Daily Tourist and first class Sleepers.

These Tickets are First-Class and first-class sleepers may be enjoyed at a reasonable charge.

For full information apply at City Office, opposite P. O., or at Depot Office, or to

C. E. McPHERSON,  
Gen. Pas. Agt, Winnipeg

THOS. CLEARHUE  
BROCKVILLE, ONT.

Manufacturer of

**Gloves and Mitts**

And Wholesale Dealer in

**Moccasins and Socks**

Winnipeg Agency: 285 MARKET ST.

N.B. A good line now on hand for assorting stock. Prompt attention to letter-orders.

P. O. BOX 972



## Ontario and Quebec Excursions

VIA

Canadian Northern Ry.

AND

Northern Pacific Ry.

GREATLY REDUCED RATES FOR DECEMBER

Write immediately for full information.

H. SWINFORD, General Agent,  
301 Main street, Winnipeg.

### ATLANTIC STEAMSHIP LINES.

Allan Line—	From St. John.	Dec. 28
Parisian	.....	Jan. 4
Nunidia	.....	Jan. 11
Allan Line—	From Halifax.	Dec. 30
Parisian	.....	Jan. 6
Nunidia	.....	Jan. 13
Dominion Line—	From Portland.	Dec. 28
Dominion	.....	Jan. 18
Vancouver Line—	From St. John.	Jan. 18
Beaver Line—	.....	Jan. 18
Lake Ontario	.....	Jan. 17
Superior	.....	Jan. 17
White Star Line—	From New York.	Dec. 31
Celtic	.....	Jan. 7
Celtic	.....	Jan. 7
Cunard Line—	From New York.	Dec. 28
Campania	.....	Jan. 4
Umbria	.....	Jan. 4
Cunard Line—	From Boston	Dec. 28
Ivernia	.....	Jan. 4
Sylvania	.....	Jan. 4
American Line—	From New York.	Jan. 7
St. Paul	.....	Jan. 7
Zealand	.....	Jan. 7
Red Star Line—	From New York.	Jan. 1
Kensington	.....	Jan. 1
Zealand	.....	Jan. 7
Anchor Line—	From New York.	Dec. 28
Furness	.....	Jan. 11
Antoria	.....	Jan. 11
Allan State Line—	From New York.	Jan. 8
Laurentian	.....	Jan. 25

Business Africa ..... Jan. 11  
Passengers ticketed through to all points in Great Britain and Ireland, and at specially low rates to all parts of the European continent. Prepaid passage arranged from all points. Apply to the nearest Steamship or railway ticket agent, or to W. P. F. CUMMINGS, General Agent, Winnipeg, Man.

RATES—Cabin, \$50, \$35, \$30, \$20, \$10 and upwards. Second Cabin, \$35, \$27.50, \$20 and upwards. Steerage, \$24.50, \$20.50, \$20.



THERE'S MONEY IN IT!  
SHIP YOUR

# FURS

HIDES DEERSKINS and SEMECA

TO  
**McMILLAN FUR & WOOL CO.**  
MINNEAPOLIS, MINN.

High Prices: Prompt Returns.  
WRITE FOR PRICE CIRCULARS

# Hotel Leland

The Palace Family and Commercial Hotel

W. D. DOUGLAS  
MANAGER

City Hall Square, Winnipeg

RATES:  
\$2.00 to \$4.00  
PER DAY

SECOND TO NOTHING  
IN CANADA

# MOYIE LUMBER COMPANY

Manufacturers and Dealers in

LUMBER LATH SHINGLES  
MOULDINGS  
CEDAR POSTS AND POLES

DRY KILN AND PLANERS IN CONNECTION

SAMUEL GRANT, Manager

MOYIE, B.C.

### SEVEN PAPER MACHINES NOW RUNNING

We are therefore ready to book orders for

News, Tissues,  
Heavy Wrappings

Writings, Litho, Nos. 1, 2 and 3  
Book, Bristol Board,  
Cover Papers and  
Woodboard

THE E. B. EDDY CO. LIMITED

Hull, Montreal, Toronto, Quebec, Ottawa, Hamilton,  
Kingston, London, St. John, N.B., Halifax, Winnipeg, Victoria, Vancouver

## Staple Lines to Start Trade for 1902

Our stock is in good shape for filling all orders.

In Season: Office and Pocket Diaries, Copying Presses, Letter Books, Papers of all kinds, Envelopes, etc., etc.

Full stock School Books, Scholars' Sundries and School Requisites.

Pipes, Pouches, Playing Cards, large assortment Novels and other books.

Heavy stock of Wrapping Paper and Paper Bags.

**THE CONSOLIDATED STATIONERY CO. Ltd.**  
WINNIPEG, MAN.

# General Stationery

**BEST VALUES  
BEST PRICES**

*We are now ready for the new season with the best  
selected stock on the market.*

## CLARK BROS. & CO.

**WINNIPEG, MAN.**

Agents for the Toronto Xmas Globe.

Large Stock of Printing Papers.

## Dressed Hogs



We are in the market  
for any quantity of  
Dressed Hogs and want  
all you can ship. Write  
or wire for prices.

### P. GALLAGHER & SONS

Butchers and Pork Packers, Winnipeg

### The Office Specialty Mfg. Co. LIMITED TORONTO

Something about Metal Trucks. A truck saves wear and tear on books, saves many journeys to and from your vault. It forms a convenient rack for books, also a convenient reference counter. It is of particular advantage where the vault is situated some distance from the general office. Doubles your vault space.

**E. R. HAMBLY,**  
P. O. Box 393, Mgr. Western Branch  
Winnipeg, Man.

### JOHN W. PECK & CO. MONTREAL WINNIPEG VANCOUVER

Manufacturers of  
**Clothing  
Furs  
Shirts**  
Dealers in  
**Men's Furnishings,  
Hats, Caps**

# Grain Tickets

AND OTHER STATIONERY.

**SEND FOR SAMPLES**

**THE FRANKLIN PRESS Ltd.** Opp. Grain Exchange, Winnipeg

## THE IMPERIAL

WHOLESALE FRUIT AND  
PRODUCE CO.

We handle all kinds of green fruits and are prepared to fill your orders for us promptly.

We also buy or handle on commission everything in the way of country produce at the highest cash prices and lowest rates commission.

Settlements made promptly.

330 Elgin Avenue, Winnipeg.

**"REFINED ALE"**

(Which Sparkles Like Champagne.)

**"EXTRA STOUT"**

and

**"REDWOOD LAGER"**

Are what the people are using.

**WHY?**

BECAUSE they are always marketed in PRIME CONDITION.  
BECAUSE THEY ARE THOROUGHLY MATHEMATICALLY in wood.  
BECAUSE all ingredients are PURE.  
BECAUSE THE UTMOST CLEANLINESS is observed in every process of manufacture.  
Order from your wholesale dealer or direct from Redwood factories, Winnipeg.

**E. T. DREWRY** Manufacturer and Importer, Winnipeg

**Somerville  
Steam Marble and  
Granite Works**  
SOMERVILLE & Co., PROP.  
BRANDON, MAN.

Estimates given on every description of Monument, Headstone, etc.

This monument, 37 feet 8 inches in height, manufactured of Manitoba granite, was erected by us in Brandon cemeteries during 1906.

### WM. FERGUSON

WHOLESALE

**Wines, Liquors  
and Cigars**

8th STREET, BRANDON

### SADLER & HAWORTH

Tanners and Manufacturers of

### Oak Leather Belting

Montreal and Toronto.

JOHN A. CARRUTHERS, Selling Agent, 120 King Street, Winnipeg, Manitoba.

### W. R. JOHNSTON & CO.

(Late Livingston, Johnston & Co.)

WHOLESALE MANUFACTURERS

READY MADE **Clothing**

Corner Hay and Front Streets  
TORONTO