

**Good . . . .  
Wallpapers**

**1-9-2-3**



**THE T. EATON CO<sup>o</sup> LIMITED**  
TORONTO AND WINNIPEG  
MONCTON MAIL ORDER BRANCH

# GOOD WALLPAPERS 1923

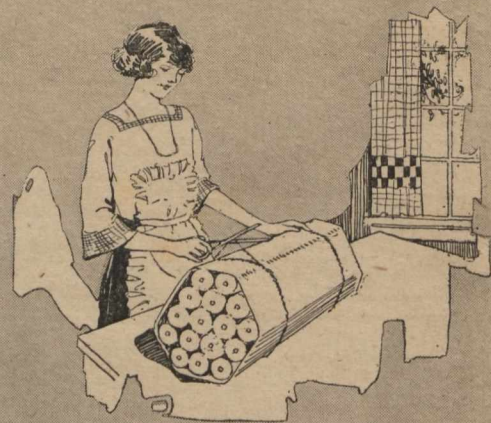
**B**Y increasing our range of samples over last year's book and including such additional numbers as Oatmeal Papers, Sanitile (washable oilcloth wall covering), Vitropane, etc., we believe this 1923 issue, with its lower price adjustments, merits—and will receive—the tangible appreciation of **EATON** customers.

When these samples were prepared every possible taste was considered in the final choice of designs and colorings, with the result that ranges of stripes, tapestries, allover and floral effects are now submitted, leaving no gaps in the form of omitted styles.

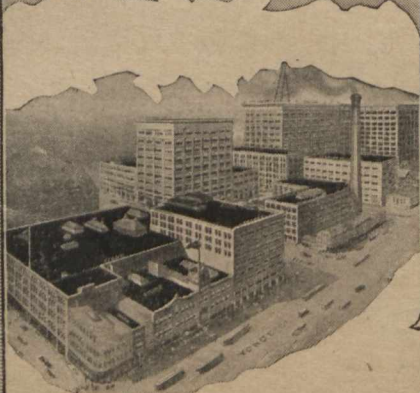
Miniature border displays throughout the book will be found of great assistance in your selection of harmonizing colors for drapery, etc.

When you note by comparison the saving to be made by the purchase of **EATON** Wallpapers and Paint, it is well to remember also that on orders of \$5.00 or over from this book, or combined with goods from our General Catalogue, we pay shipping charges to all points in Ontario, Quebec and the Maritime Provinces.

◆ ◆ ◆  
**THE T. EATON CO. LIMITED**  
TORONTO AND WINNIPEG  
MONCTON MAIL ORDER BRANCH



**We pay Shipping Charges  
on orders of \$5.00 or  
over from this book or  
combined with goods from  
our General Catalogue.**



16463 202  
K2

This will help  
you to get the  
right effects

### Wallpapers

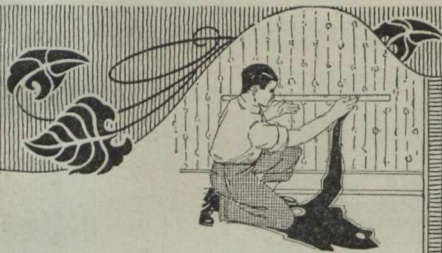
For a room closely or heavily furnished, where walls carry many pictures, it is well to select papers in plain or striped design. This will give the room a larger appearance and effect the proper display of your pictures. Heavy tapestry or all-over designs are the better choice for cold, dull or very large rooms.

Tan, brown, buff or cream colorings with enlivening red or green used as finishing touches, provide warmth and brightness for the dark room. Difficulty is often experienced in the treatment of the attic room or where the walls are of irregular height, and in suggesting two ways of overcoming this, we believe that one or the other will suit any case. Where the lowest wall is over 6 ft. high, carry the sidewall paper to its full height and drop the ceiling paper or paint to this level all around the room irrespective of where ceiling and sidewall meet on other walls. Use moulding or border to finish.

The room with a very low sidewall on one or more sides is best treated in the following way. Select a wallpaper in all-over design and start to hang at doorway, making the head of the doorway the dividing line between sidewall and ceiling, separated by border or moulding. Keep this height for sidewall on all sides of room, having no regard for slopes or alcoves.

### Paints

Full service cannot be obtained from paint if oils and pigments are not thoroughly mixed before applying. Stir well from bottom of can for best results. On all new outside surfaces or where the woodwork has been left unprotected by paint from the elements for a long time, use the following priming coat—half raw linseed oil and half paint as taken from can. Apply second coat as from can. This will ward against blisters and peeling. Before painting, be sure the surface about to be painted is free from dampness, oil, grease, soot or old blistered paint. Interior surfaces are often spoiled for paint or varnish treatment by the use of oil mops, etc., therefore to be sure of a clean surface, wash with a mild solution of soda water and allow to dry, or rub down with benzine before painting. Flat wall paint will be found most satisfactory, used as underbody for enamels, particularly white. One of the most pleasing color combinations for outside decoration is Leather Brown body with white, light buff or cream trim. The reverse is also effective. New plaster walls must be sized before treatment with either wallpaper or paint.



# How to Order Wallpaper

## Be Sure You Order the Correct Amount of Paper. Here's the Way to Find Out

Find the number of feet around room and multiply by the height. This will give you the number of square feet in the walls. Deduct 20 square feet for each opening, then divide the balance by 35, which will give you the number of single rolls required for walls. For ceiling multiply the length of the room by the width, divide the total by 35, and it will give you the number of single rolls required for papering the ceiling.

Delay and consequent disappointment have been caused by ordering wallpaper by the double roll and border by the double yard and roll.

Although put up in double rolls for convenience in cutting, our wallpaper prices are always quoted by the single roll (35 square feet) and border by single yard. Should you order 10 rolls of paper, therefore, and appear to receive only five, remember the double rolls when checking your order.

## Refer to This Chart Before Placing Your Order. It Will Prevent Waste or Shortage.

**Note.**—For every two openings, deduct one single roll sidewall. One single roll of wallpaper covers 35 square feet. To ascertain the number of rolls required for ceilings of long hallways, multiply the length by the width in feet and divide by 35, which will give the number of single rolls required.

Distance around room in ft.	Single rolls of sidewall required according to height of room					Single rolls of Ceiling	Yards of Border
	8 ft.	9 ft.	10 ft.	11 ft.	12 ft.		
30	7	8	9	10	11	2	11
32	8	9	10	11	12	2	12
34	8	9	10	11	12	3	12
36	9	10	11	12	13	3	13
38	9	10	11	12	14	3	14
40	10	11	12	13	14	3	14
42	10	11	12	14	15	4	15
44	11	12	13	14	16	4	16
46	11	12	14	15	16	4	17
48	12	13	14	16	17	5	17
50	12	13	15	16	18	5	18
52	12	14	15	17	18	5	19
54	13	14	16	17	19	6	19
56	13	15	16	18	20	6	20
58	14	15	17	19	20	6	21
60	14	16	18	19	21	7	21
62	15	16	18	20	22	7	22
64	15	17	19	21	22	7	23
66	16	18	19	21	23	8	23
68	16	18	20	22	24	9	24
70	16	18	20	22	24	9	24
72	17	19	21	23	25	10	25
74	17	20	22	24	26	10	26
76	18	20	22	24	27	11	27
78	18	21	23	25	27	11	27
80	19	21	23	26	28	12	28
82	19	22	24	26	29	12	29
84	20	22	24	27	29	13	29

## When You Re-Order, Send a Sample

It is a most important thing that, in addition to the number, we receive a sample of the paper you desire, when re-ordering to complete decorating a room. This will help us greatly to give a correct match to the paper you already have, and also to avoid the delay necessary in returning paper that is off in shade.

By sending a sample, you offset an error in quoting the number.

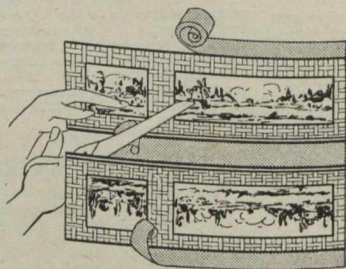
## Use Our Special

We enclose in this Book an Order Form. Make use of it in making out your order for Wallpaper—you will find it easy and convenient. All you have to do is to fill in the blank spaces, stating number of paper desired, quantity required, and the price. Remember when figuring out quantities that there are about 35 sq. feet to the single

# From This Sample Book

## How to Handle Band Borders

The simplicity with which band borders are prepared for use is clearly shown in the illustration. Just trim off the selvage to the guide line and the border is ready to apply.



This illustration also serves to show how errors are sometimes made when ordering borders (see details in next column)—two yards of border running side by side. Though this is but one yard of paper, it is two yards of border, and is sold as two yards.

## Order Form

roll of Wallpaper, but it is put up in double rolls of about 70 square feet for convenience in cutting. The Order Form is printed and enclosed especially for your benefit. In filling your order, there is practically no possibility of any mistakes occurring when it is filled direct from the regular Wallpaper Order Form.

## Measure This Way When Ordering Border

Always allow two extra yards for cutting and matching when measuring for border.

Having arrived at the number of yards required for your work, **Order Accordingly.** Do not pay attention to the fact that two yards of border are printed on one width of paper (see illustration, next column). Borders are sold only by the single yard, no matter how many are printed on a yard of paper. Therefore, if the border costs 5c per yard, and it takes 18 yards to go around your room, the total cost will be 90c. Should this be narrow border, you would only receive 9 yards of paper, which would carry 18 yards of border.

## Cut-Out Borders Produce Beautiful Effects

Many of the charming and handsome patterns in this book are furnished with "Cut-out" Borders. Since their introduction, these borders have proved a tremendous convenience to those who do their own paperhanging.

The design is already cut out with a perforated line between pattern and selvage, and selvage is easily and cleanly detached by tearing along perforated line, as shown above. This may be done before or after pasting, but a cleaner job can be accomplished by pasting before detaching selvage, as all excess paste is, therefore, detached with selvage.

## Important Points

Wallpapers are sold by the single roll.

All wallpapers (except Oatmeal Paper) are put up two rolls in the piece to avoid waste in cutting.

Oatmeal Papers contain three rolls to a piece.

Borders are sold by the single yard.

**If you have the above points clear, it will eliminate misunderstanding on receipt of your paper.**

# Do Your Own Paperhanging? It's

## New Walls

To new walls that have never been papered apply a thin coat of size, made by soaking 1 pound of ground glue for 12 hours in just enough water to cover it, and then adding 12 quarts of hot water and a tablespoonful of powdered alum. Use it while it is warm.

Before any size is applied on the walls, all large cracks or holes should be filled with plaster paris, mixed to a paste with the size, and scraped smooth. Small ones will not show. Kalsomine or whitewash should be washed off with a sponge and warm water. If the walls have been rough plastered or not putty coated, smooth off the projecting grains of sand with a piece of wood before sizing. When walls are very rough, apply a thin paste when the size is dry, and let paste dry thoroughly before papering.

Before papering over a wall that has been painted, apply a solution consisting of one part ammonia and six parts water. This will remove all grease and oil—producing a better surface for the paste.

Board ceilings and walls should be covered with cheesecloth, which, to shrink it tight to the walls, should be tacked at edges and sized. At the corners and around the casings, tacks should be placed about 2 inches from edge, and the ends of cloth pasted down.

To avoid having the paper curl up at edges, be careful to clean and size the walls thoroughly around the base-board and casing.

1—Pasting and folding strip of paper.

2—Trimming a strip of paper after it has been pasted.

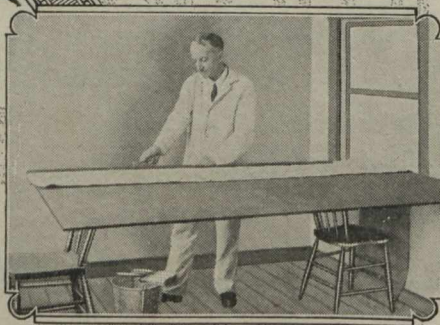
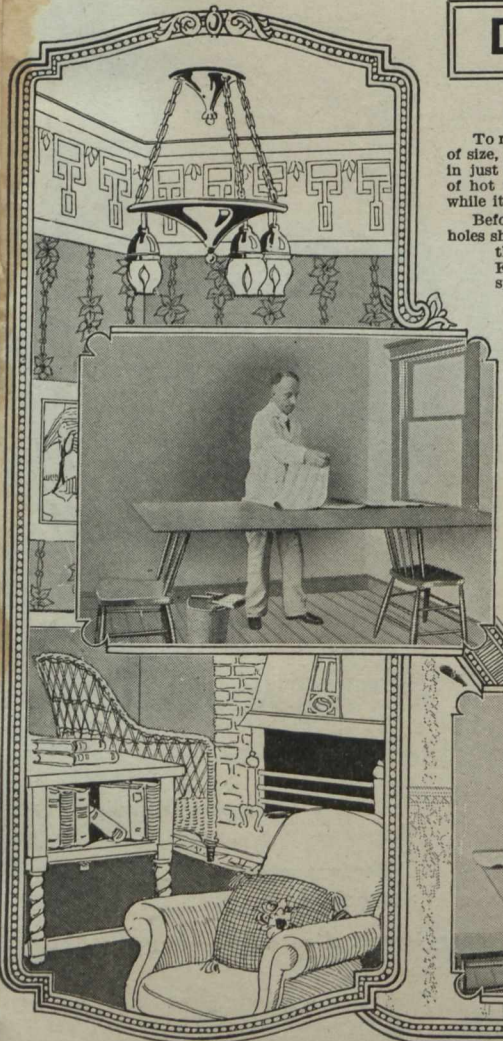
## Preparing for Hanging Wallpaper

Get two boards 7 or 8 feet long and about 10 or 12 inches wide placed side by side with the ends resting on tables or boxes 3 or 4 feet high, which will serve as an excellent paste table. A platform to stand upon while hanging the paper can be made by placing a plank or board on two or more boxes which should be high enough so that your head will be about 6 inches from the ceiling. The tools required are a paste brush, a paperhanger's smoothing brush, a seam roller and a pair of shears or a straight edge and trimming knife.

## Hanging Ceiling Paper

As a guide to hanging the first strip, drive a nail in at each end of the ceiling 16 inches from the side-walls. Rub a piece of cord with charcoal or chalk and tie to the nails, being sure it is drawn tight. Then take hold of the centre of cord, pull down and let go; cord will strike the ceiling and leave a chalk line, shown in illustration No. 3. Take strip you have pasted and trimmed, unfold end to your right, and let other end, which is still unfolded, hang over a roll of wallpaper held in your left hand. See illustration No. 3. Guide paper along chalk line, at the same time pressing on ceiling flat with your hands as you move along and smoothing it out with a smoothing brush.

3—How to put on first strip of ceiling paper—Lap 2 inches on side wall at each end and sides.



# Very Simple—Read These Directions!

## Ceiling and Sidewall

Always paper ceiling first. Find the length of your room, unroll ceiling paper, pattern up, cut and match enough for a whole room. Leave strips about 4 inches longer than length required, so that when hung 2 inches will come down on walls at each end. Then turn pattern down and it is ready to paste.

After pasting, draw paper towards you about 3 inches from end of table and proceed to trim, commencing at the right. See illustration No. 2. The great advantage of trimming after pasting is that the paste is more evenly distributed at the edges, and it also takes less time.

When ceiling is finished, cut the side wallpaper, matching, and leaving about 4 or 5 inches to allow for any waste in matching. The upper end of the strips will be uneven. These will be covered by the border. Trim off lower ends at baseboard with a base trimmer or a pair of shears. When using shears, paste the paper down in place close to the top of baseboard. Use back of shears for marking by running them over the top of paper where plaster and baseboard meet. Lift the paper a little and trim along where you have marked, and smooth down again with smoothing brush.

When hanging side wallpaper, commence at any door, as corners are often irregular. This will assist you to hang the first strip straight. Then continue around room until finished.

## Pasting and Smoothing

Beginning at the left of the table, apply the paste evenly with a paste brush on the top strip of paper. After you have applied the paste on about one-half the length, fold over (be careful not to crease) the part of paper that is pasted, using special care to see that the sides are exactly even. (See illustration No. 1).

Now apply paste to the other half, and fold that over towards the centre—the same as the first half. If strip of paper is longer than the table, paste the left half, and after folding, allow the folded ends to hang over the ends of table and rest on floor while you are pasting and folding the other half. Next, trim as previously directed. You now have an entire strip of paper before you, all pasted and folded and the side of the paper perfectly even and ready for hanging.

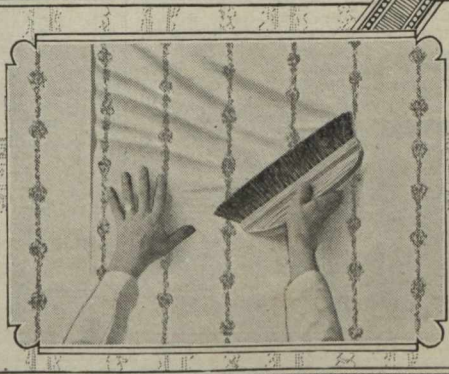
To have a neat, clean finish after smoothing out, do not trim the selvage edge off until after paste has been applied. It is difficult to paste evenly along a strip of paper after it has been trimmed and not get a few drops over the edge which will likely ooze out and smear over the adjoining paper hung. (See illustration No. 5).

This smearing is avoided by leaving the selvage edge on until you finish pasting, then when trimming, all excess paste is also taken off, which leaves a clean and neat finish. (See illustration No. 6).

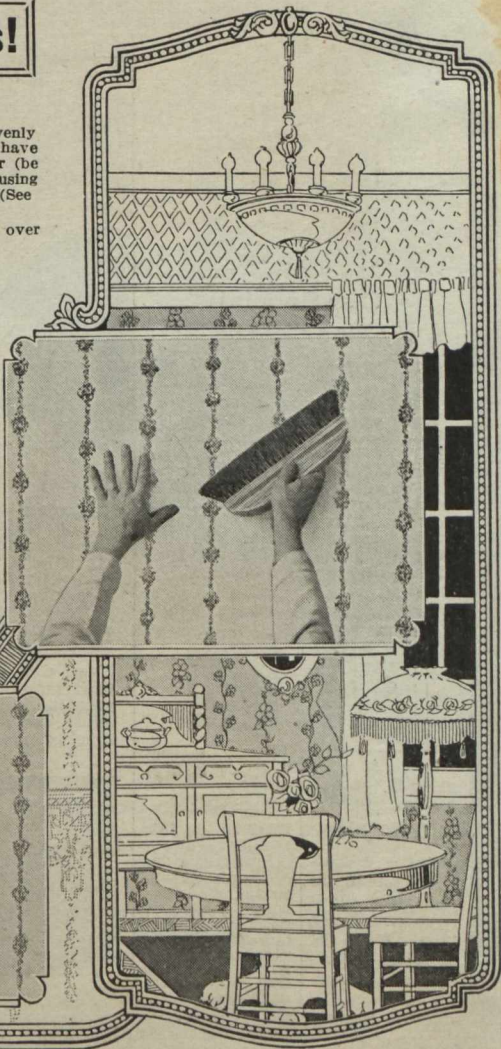
4—Hanging side wallpaper, matching and allowing at top for border.



5—Wrong Way: Paste smeared over adjoining paper because edge was trimmed before pasting.



—6—  
Right Way:  
Trimmed  
after past-  
ing; all ex-  
cess paste  
trimmed off  
withselvage

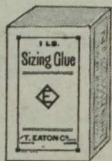




Our Special  
Floor Wax

665-047 5-lb. tin **1.15**

Before buying your Floor Wax, consider the saving to be effected by getting the 5-lb. tin. The initial cost is very much less, and the particles adhering to each of five separate cans constitute quite a loss. The 5-lb. pail will be found much handier also for the housewife to insert the hand and cloth comfortably.



Per 1-lb.  
package **20c**  
**665-396**

Before decorating, be sure to size your walls. It is very easy and costs little. Put 1 lb. in a pail of boiling water and apply lukewarm.



1/4 Pint 1/2 Pint  
**35c 55c**  
**665-489**

Diamond Enamel imparts a beautiful gold finish to picture frames, chandeliers, radiators, steam pipes, fancy furniture, basketware, etc. Much renovating may be done with a very small quantity.

# For Papering and Painting



## STICK-FAST

2-lb. pkg. **40c** 5-lb. pkg. **85c**

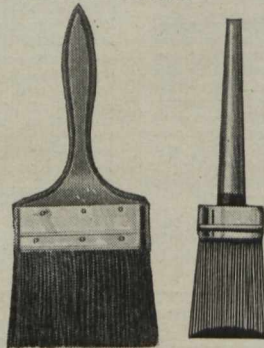
665-395 Diamond Enamel Stickfast is so much more economical, clean and effective than flour paste, that it would appear superfluous to mention the fact. As an adhesive paste for paperhanging, labels, bur-laps or mounting photographs, etc., it is unequalled. Will not discolor the most delicate shades of paper.

Stickfast paste requires no hot water for mixing, for it is prepared with cold water, thereby saving time and money. In placing your wallpaper order, do not forget "Stickfast."



665-527 Each **50c**

The most effective roller to obtain neat seams, even in the most awkward corners. Note the side arm feature.



665-502

3 ins. wide.. **75c**  
3 1/2 ins. wide.. **90c**  
4 ins. wide **1.25**

A sturdy, well-finished bristle brush, set in rubber. Suitable for almost any paint work.

665-513

2 3/4-in. bristles. Price, **75c**  
each.. **75c**  
2 3/4-in. bristles. Price, each **1.35**

Paint, varnish, enamel or stain work is made easy by the use of this superior oval. Black bristles, set in rubber.



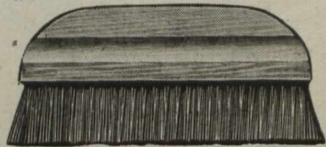
665-526 Each **30c**

An iron-handled trimmer for wallpaper, to finish around windows, baseboards, etc. Possesses a keen, serrated edge.



665-529 Each **45c**

For rolling down seams and bubbles when paper hanging. Made of stout metal and hardwood.



665-507 10 ins. wide **75c**  
Each.....

Made of good black bristles, this splendid smoothing brush will give long, efficient service.

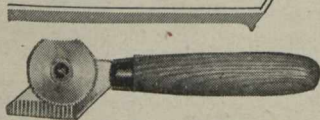


## Painters' Time-Saver

665-531 Each.. **25c**

The hard part of the painter's work is to avoid smearing the paint over nearby surfaces, such as window panes, wallpaper, etc. Let this trouble go no more, for at trivial cost the "Painter's Time Saver" is at your service.

This "Time Saver" affords neater work and a saving of one's time and patience. Use it also when washing your wood-work to avoid soiling the decorations.



### Trimmer and Knife

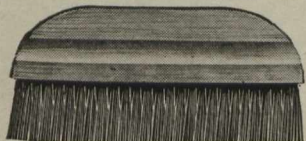
665-530 Each..... **50c**

Cut and trim with one tool. Use this very handy combination.



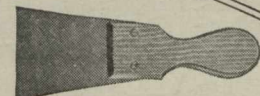
665-525 Each.. **25c**

The tool with which to apply putty or crack filler to seams, nail holes, cracks in plaster, etc.



665-508 10 ins. wide. **25c**  
Each.....

This strongly made layer is of grey fibre. Exceptionally low in price. You will need one.



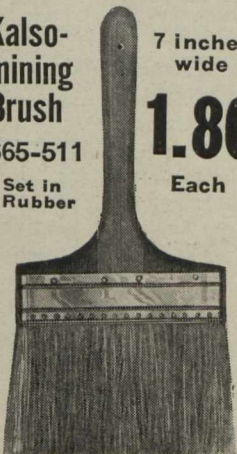
665-528 Each.. **25c**

Wall Scraping Knife for removing old wallpaper, etc., from walls and ceilings. Its stiff blade is 3½ ins. long, set in a hardwood handle.

### Kalsomining Brush

665-511

Set in Rubber



7 inches wide

**1.80**

Each

A good - quality brush should always be purchased for kalsomine work, because it must withstand repeated washings. This brush is made from selected black China bristles.



Quart

**80c**

½ Gal.

**1.55**

Gallon

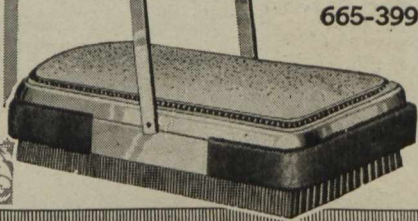
**2.95**

665-380

EATON

Ground

Color is an underbody or primer for interior work. New wood or old paint or varnish surfaces can be satisfactorily ground-  
ed with it for any finish.



### Davis Grainers

665-379 Per set **1.50**

Three rubber rollers, 4¾ ins. long and 1½ ins. in diameter, make up the set of Davis Grainers. Used according to directions with "EATON Graining Color," many hardwood grain effects are obtainable.

Graining color is the only satisfactory stain for this work.

## for Graining



Pint Quart

**50c 80c**

Colors:

665-377. Light Oak.  
665-378. Dark Oak.

Suitable for graining work, used with EATON Ground Color and Davis Grainers. The best finish for the grained surface is EATON High-grade Floor Varnish (see page 86).

### Polishing Brush and Waxer

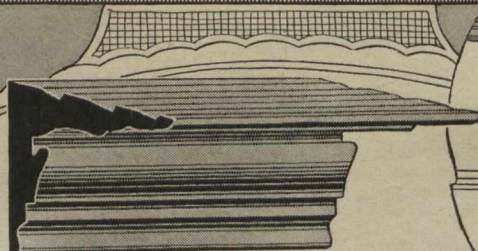
665-399 After many failures, this satisfactory waxer and polisher has been produced. The cork pad on the reverse side of brush is the surface for wax, and with a cheese cloth clamped over it, an even spread of wax is forced through to the floor. Swing to brush side for polishing. Price..... **4.75**

# Room Mouldings



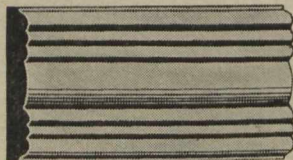
## White Enamel Moulding

65-615 White Enamel with gilt band through centre. 1½ ins. wide, per ft. .... 3c



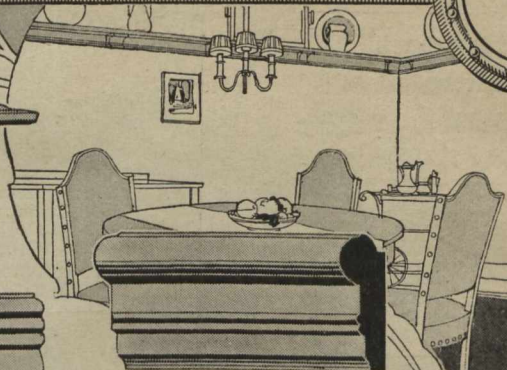
## Imitation Oak Plate Rail

65-611 Imitation Oak Plate Rail, highly polished, 3 ins. wide, per ft. .... 20c

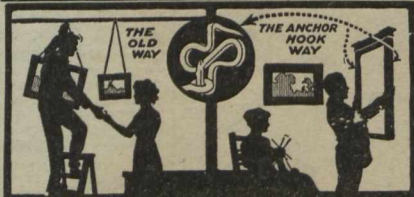


## Plain Gilt Moulding

65-614 1½ ins. wide per ft. ... 5c



# Hang your Pictures without Wire



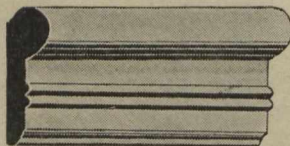
## Anchor Picture Hooks

Medium Size 14 hooks, per box 15c Large Size 10 hooks, per box, 15c

665-398 Hanging pictures, mirrors, etc., by cord or wire, is both awkward and unsatisfactory, continually needing adjusting which finally disfigures the wall. Anchor Picture Hooks do not mar wall, even after being taken down, for the points are left in the wall to fill up the hole they have made. Two of these hooks are used for each picture and they hold it perfectly straight. They never need adjusting.

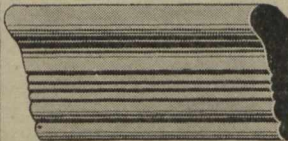
## Imitation Oak Chair Rail

65-613 1½ ins. wide, per ft. ... 4c  
65-616 2 ins. wide, per ft. ... 5c



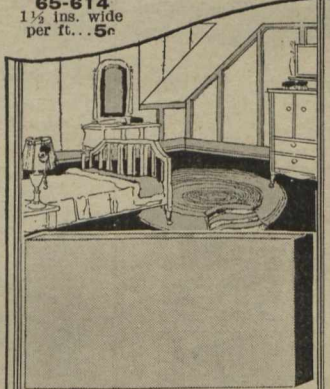
## White Enamel Moulding

65-618 Mldg., 1½ ins. wide, per ft. . 3½c  
65-612 Mldg., 2 ins. wide, per ft. . 5c



## Imitation Oak Room Moulding

65-617 Imitation Oak Room Moulding, 1½ ins. wide, per ft. . 3c



## Basswood Strapping

Suitable for panelling plaster walls and ceilings, wallboards, etc. Also for neatly finishing any kind of woodwork.

65-603 1½ ins. wide, per ft. 3c  
65-604 2 ins. wide, per ft. 3½c  
65-605 2½ ins. wide, per ft. 4½c



A Design For Use  
on Either

# PARLOR or BEDROOM

**OUR  
WALLPAPER  
IS PUT UP IN  
DOUBLE ROLLS  
TO AVOID  
WASTE**

## SIDEWALL

65-400.

Per  
Single  
Roll

**7<sup>c</sup>**

## CEILING

65-500.

Per Single  
Roll

**7<sup>c</sup>**

## BORDER

65-600.

7½ ins. wide.  
Per Yard

**3<sup>c</sup>**

This Chart Tells You at a Glance How Much  
Wallpaper You Need and What it will Cost

Size of Room	Height of Room	No. of Doors	No. of Windows	Single Rolls Sidewall	Single Rolls Ceiling	Yards of Border	Total Cost Room Complete
8 x 10 ft.	8'	1	1	8	3	13	<b>1.16</b>
10 x 12 ft.	8'	1	1	9	4	16	<b>1.39</b>
10 x 14 ft.	8'	2	2	9	4	17	<b>1.42</b>
12 x 12 ft.	8'	2	2	9	5	17	<b>1.49</b>
12 x 14 ft.	8'	2	2	10	5	20	<b>1.65</b>
12 x 16 ft.	9'	2	2	13	6	21	<b>1.96</b>
14 x 16 ft.	9'	2	2	14	7	22	<b>2.13</b>
14 x 18 ft.	9'	2	2	15	8	24	<b>2.33</b>

**E**XCEPTIONAL value for 7c a roll is this pretty paper, and so it is sure to be a favorite choice. It will especially appeal to those who wish to re-decorate a parlor or bedroom for a small outlay, and it will certainly give a very fresh, cheery air to the room.

The colorings of the side walls are repeated in the attractive 7½-inch cut-out border which features pink wild roses and green leaves with little birds perched here and there among the branches, and the whole effect of this inexpensive wall covering is pleasing indeed.

Description and Prices Above Are For Reverse Side of This Sheet—Not Design Shown Opposite



A Most Pleasing  
Selection for  
**PARLOR or  
BEDROOM**

**OUR  
WALLPAPER  
IS PUT UP IN  
DOUBLE ROLLS  
TO AVOID  
WASTE**

**SIDEWALL**

65-402  
Per  
Single  
Roll

**9<sup>c</sup>**

**CEILING**  
65-502  
Per Single  
Roll

**9<sup>c</sup>**

**BORDER**  
65-602  
7 ins. wide  
Per Yard

**4<sup>c</sup>**

**This Chart Tells You at a Glance How Much  
Wallpaper You Need and What it Will Cost**

Size of Room	Height of Room	No. of Doors	No. of Windows	Single Rolls Sidewall	Single Rolls Ceiling	Yards of Border	Total Cost Room Complete
8 x 10 ft.	8'	1	1	8	3	13	<b>1.51</b>
10 x 12 ft.	8'	1	1	9	4	16	<b>1.81</b>
10 x 14 ft.	8'	2	2	9	4	17	<b>1.85</b>
12 x 12 ft.	8'	2	2	9	5	17	<b>1.94</b>
12 x 14 ft.	8'	2	2	10	5	20	<b>2.15</b>
12 x 16 ft.	9'	2	2	13	6	21	<b>2.55</b>
14 x 16 ft.	9'	2	2	14	7	22	<b>2.77</b>
14 x 18 ft.	9'	2	2	15	8	24	<b>3.03</b>

**Y**ET another case where a very small sum affords a welcome chance to save on an appealing paper.

Garlands of pink or blue blossoms with butterflies drifting through the open spaces are graceful features of the 7-inch cut-out border which also shows an effective use of black.

The daintiness achieved throughout this decoration makes it a pleasure to the eye, and its good value points the way to economy.

Description and Prices Above Are For Reverse Side of This Sheet—Not Design Shown Opposite



This Popular  
Grey Ground Paper  
May be Correctly  
Employed as a  
Treatment For  
**PARLOR or  
BEDROOM**

**OUR  
WALLPAPER  
IS PUT UP IN  
DOUBLE ROLLS  
TO AVOID  
WASTE**

**SIDEWALL**

65-474

Per  
Single  
Roll

**14<sup>c</sup>**

**CEILING**

65-574

Per Single  
Roll

**14<sup>c</sup>**

**BORDER**

65-674

6½ Inches wide  
Per Yard

**5<sup>c</sup>**

**This Chart Tells You at a Glance How Much  
Wallpaper You Need and What it will Cost**

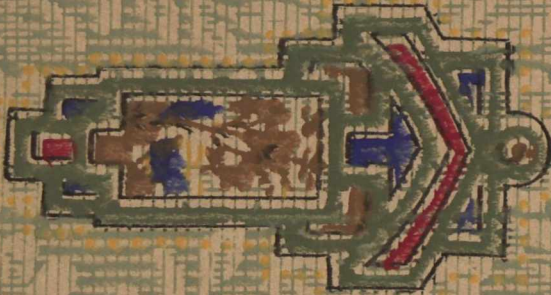
Size of Room	Height of Room	No. of Doors	No. of Windows	Single Rolls Sidewall	Single Rolls Ceiling	Yards of Border	Total Cost Room Complete
8 x 10 ft.	8'	1	1	8	3	13	<b>2.19</b>
10 x 12 ft.	8'	1	1	9	4	16	<b>2.62</b>
10 x 14 ft.	8'	2	2	9	4	17	<b>2.67</b>
12 x 12 ft.	8'	2	2	9	5	17	<b>2.81</b>
12 x 14 ft.	8'	2	2	10	5	20	<b>3.10</b>
12 x 16 ft.	9'	2	2	13	6	21	<b>3.71</b>
14 x 16 ft.	9'	2	2	14	7	22	<b>4.04</b>
14 x 18 ft.	9'	2	2	15	8	24	<b>4.42</b>

**H**AVE you a parlor or bedroom that has rather shabby or unattractive walls? If so, you will be particularly interested in this cheery paper that would make a great improvement at a slight cost.

The soft grey background is an excellent foil for the brightly colored floral design scattered over the side walls, and the pretty 6½-inch cut-out border, in harmonizing tones, uses touches of black to emphasize its effective pattern.

Description and Prices Above Are For Reverse Side of This Sheet—Not Design Shown Opposite





An Inexpensive  
Hanging for  
**KITCHEN, HALL,  
DINING-ROOM or  
LIVING-ROOM**

**OUR  
WALLPAPER  
IS PUT UP IN  
DOUBLE ROLLS  
TO AVOID  
WASTE**

**SIDEWALL**

65-401.

Per  
Single  
Roll

**8<sup>c</sup>**

**CEILING**

65-501

Per Single  
Roll

**8<sup>c</sup>**

**BORDER**

65-601

7 ins. wide  
Per Yard

**3<sup>c</sup>**

**This Chart Tells You at a Glance How Much  
Wallpaper You Need and What it Will Cost**

Size of Room	Height of Room	No. of Doors	No. of Windows	Single Rolls Sidewall	Single Rolls Ceiling	Yards of Border	Total Cost Room Complete
8 x 10 ft.	8'	1	1	8	3	13	<b>1.27</b>
10 x 12 ft.	8'	1	1	9	4	16	<b>1.52</b>
10 x 14 ft.	8'	2	2	9	4	17	<b>1.55</b>
12 x 12 ft.	8'	2	2	9	5	17	<b>1.63</b>
12 x 14 ft.	8'	2	2	10	5	20	<b>1.80</b>
12 x 16 ft.	9'	2	2	13	6	21	<b>2.15</b>
14 x 16 ft.	9'	2	2	14	7	22	<b>2.34</b>
14 x 18 ft.	9'	2	2	15	8	24	<b>2.56</b>

**F**OR the surprisingly small sum of 8c a roll you may secure this pleasing and serviceable wallpaper in which the restful green shades predominate. Its well-covered pattern will not readily soil, so this paper would be a practical choice for a much-used room.

Rich-looking and very effective is the 7-inch cut-out border carried out in rose, green, blue colorings with touches of gilt. It displays a conventional floral design and interesting little scenes, and is accompanied by a matching 1½-inch band to give base of walls a neat finish.

Description and Prices Above Are For Reverse Side of This Sheet—Not Design Shown Opposite



This Attractive  
Treatment Would Add  
To the Beauty of  
**PARLOR** or  
**BEDROOM**

**OUR  
WALLPAPER  
IS PUT UP IN  
DOUBLE ROLLS  
TO AVOID  
WASTE**

**SIDEWALL**  
65-437  
Per  
Single  
Roll **14<sup>c</sup>**

**CEILING**  
65-563.  
Per Single  
Roll **12<sup>c</sup>**

**BORDER**  
65-637.  
7½ ins. wide,  
Per Yard **6<sup>c</sup>**

**This Chart Tells You at a Glance How Much  
Wallpaper You Need and What it Will Cost**

Size of Room	Height of Room	No. of Doors	No. of Windows	Single Rolls Sidewall	Single Rolls Ceiling	Yards of Border	Total Cost Room Complete
8 x 10 ft.	8'	1	1	8	3	13	<b>2.26</b>
10 x 12 ft.	8'	1	1	9	4	16	<b>2.70</b>
10 x 14 ft.	8'	2	2	9	4	17	<b>2.76</b>
12 x 12 ft.	8'	2	2	9	5	17	<b>2.88</b>
12 x 14 ft.	8'	2	2	10	5	20	<b>3.20</b>
12 x 16 ft.	9'	2	2	13	6	21	<b>3.80</b>
14 x 16 ft.	9'	2	2	14	7	22	<b>4.12</b>
14 x 18 ft.	9'	2	2	15	8	24	<b>4.50</b>

**O**N the reverse side of the page you see the charming pattern of this moderately-priced paper and you can imagine how beautifully it would blend with either plain grey or rose hangings.

A lovely spring-like air pervades the 7½-inch cut-out border, for it shows trees abloom with pink blossoms, while similar but larger flowers and green leaves are festooned about the edge and blue birds appear to swing gaily on slim branches. You will certainly be pleased with the effect of this paper on your walls, and the fact that it cost so little will add to your satisfaction.

Description and Prices Above Are For Reverse Side of This Sheet—Not Design Shown Opposite



A Paper that will Add  
Cheer to  
**LIVING-ROOM,  
HALL or  
DINING-ROOM**

**OUR  
WALLPAPER  
IS PUT UP IN  
DOUBLE ROLLS  
TO AVOID  
WASTE**

**SIDEWALL**

65-421.

Per  
Single  
Roll

**18<sup>c</sup>**

**CEILING**

65-514.

Per Single  
Roll

**18<sup>c</sup>**

**BORDER**

65-621.

Ins. wide.  
Per Yard

**8<sup>c</sup>**

## Floor Lac

Pint **55c** Quart **95c** ½ Gal. **1.75** Gal. **3.25**

Colors: 665-363. Light Oak.  
665-364. Walnut.  
665-365. Dark Oak.

665-366. Cherry.  
665-367. Rosewood.  
665-368. Mahogany.

To varnish and stain with one application is a boon to the busy householder. EATON Floor Lac is the medium through which this may be done. Floor woodwork or furniture surfaces treated with Floor Lac will withstand all kinds of hard wear, moisture, heat or cold without deterioration or damage.

Dries hard, but not brittle, and with a lustre that remains.

Do not paint or stain over damp or oily surface.

Note—Clean with benzine.

**T**HIS rich-looking paper will be especially appreciated in a rather dark, low-ceilinged room, for its warm tan tones will produce a bright effect and the stripes will give an appearance of height to the walls. Another point is that the easily-matched striped design will be found very convenient by both experts and novices at paper-hanging.

Description and Prices Above Are For Reverse Side of This Sheet—Not Design Shown Opposite



An Effective  
Design for  
**PARLOR or  
BEDROOM**

**OUR  
WALLPAPER  
IS PUT UP IN  
DOUBLE ROLLS  
TO AVOID  
WASTE**

**CEILING**  
65-502.  
Per Single  
Roll

**9c**

**SIDEWALL**

65-403  
Per  
Single  
Roll

**9c**

**BORDER**  
65-603.  
7 Ins. wide  
Per Yard

**4c**

## Aluminum Paint

$\frac{1}{4}$ -Pint	$\frac{1}{2}$ -Pint	Pint
<b>30c</b>	<b>55c</b>	<b>95c</b>

665-381 Certain surfaces would appear to better advantage if given that metallic gloss or suggestion of the antique by a treatment of Aluminum Paint. Among these are stove pipes, radiators, boilers, engines, novelty furniture, etc. EATON Aluminum Paint will withstand great heat and will not peel.

**W**HEN you can buy such an attractive paper for this low price, it certainly is an inducement to do some re-decorating—and isn't it remarkable what a dainty, fresh appearance a light, pretty paper gives to a room?

Much interest is added to this inexpensive wall covering by its graceful 7-inch cut-out border. It uses touches of black as a foil for the rose, blue and green colorings of the flowers and leaves arranged in festoons and in circles that enclose gay butterflies. If you are seeking a very appealing and at the same time inexpensive paper, this one will answer your requirements.

Description and Prices Above Are For Reverse Side of This Sheet—Not Design Shown Opposite





Arranged in Color  
and Design for  
**PARLOR or  
BEDROOM**

**OUR  
WALLPAPER  
IS PUT UP IN  
DOUBLE ROLLS  
TO AVOID  
WASTE**

**SIDEWALL**

65-438

Per  
Single  
Roll

**14<sup>c</sup>**

**CEILING**

65-563

Per Single  
Roll

**12<sup>c</sup>**

**BORDER**

65-638

6½ ins. wide  
Per Yard

**6<sup>c</sup>**

## **BATH ENAMEL**

**Per Half-Pint Tin 45c**

Colors: 665-390. Ivory.

665-391. White.

665-392. Nile Green.

EATON Bath Enamel will produce that fresh, clean, tile-like gloss so indispensable on wash basins, sinks, refrigerators, kitchen cabinets, medicine chests, etc. It is also suitable for retouching chipped enamelware and contains the necessary elements to withstand boiling water.

**S**OFT tints of mauve with silvery gleams and touches of grey always make a dainty color scheme, as this pretty flowered paper bears striking evidence.

Pert little songsters are perched amidst groups of flowers on the 6½-inch cut-out border which with the exception of an artistic use of black repeats the shades of side walls.

Supplemented by hangings in pastel tones, this tasteful decoration will complete a room of exceeding charm.

Description and Prices Above Are For Reverse Side of This Sheet—Not Design Shown Opposite



One of the  
Well Established  
Patterns Drawn for  
**BATHROOM,  
KITCHEN or  
PANTRY**

**OUR  
WALLPAPER  
IS PUT UP IN  
DOUBLE ROLLS  
TO AVOID  
WASTE**

**SIDEWALL**  
65-418  
Per  
Single  
Roll **15<sup>c</sup>**

**CEILING**  
65-517  
Per Single  
Roll

**15<sup>c</sup>**

**BORDER**  
65-618  
6 inches wide  
Per Yard

**5<sup>c</sup>**

**This Chart Tells You at a Glance How Much  
Wallpaper You Need and What it will Cost**

Size of Room	Height of Room	No. of Doors	No. of Windows	Single Rolls Sidewall	Single Rolls Ceiling	Yards of Border	Total Cost Room Complete
8 x 10 ft.	8'	1	1	8	3	13	<b>2.30</b>
10 x 12 ft.	8'	1	1	9	4	16	<b>2.75</b>
10 x 14 ft.	8'	2	2	9	4	17	<b>2.80</b>
12 x 12 ft.	8'	2	2	9	5	17	<b>2.95</b>
12 x 14 ft.	8'	2	2	10	5	20	<b>3.25</b>
12 x 16 ft.	9'	2	2	13	6	21	<b>3.90</b>
14 x 16 ft.	9'	2	2	14	7	22	<b>4.25</b>
14 x 18 ft.	9'	2	2	15	8	24	<b>4.65</b>

**T**ILED designs are much in demand for rooms where a very decorative paper would not be suitable, such as bathrooms, kitchens and pantries. Scenic squares are placed at regular intervals among the tan and brown ones, so this paper is attractive as well as decidedly serviceable.

In keeping with the side walls is the unique 6-inch border which has quite a Dutch atmosphere, with its delft blue panels and its windmill scenes carried out in tan and green. All these colorings appear in the accompanying 1½-inch band that will finish base of walls.

Description and Prices Above Are For Reverse Side of This Sheet—Not Design Shown Opposite



Prettily Tinted to  
Decorate the  
Walls of  
**BEDROOM or  
PARLOR**

**OUR  
WALLPAPER  
IS PUT UP IN  
DOUBLE ROLLS  
TO AVOID  
WASTE**

**SIDEWALL**

65-472

Per  
Single  
Roll

**12<sup>c</sup>**

**CEILING**

65-572

Per Single  
Roll

**12<sup>c</sup>**

**BORDER**

65-672

8 Ins. wide  
Per Yard

**4<sup>c</sup>**

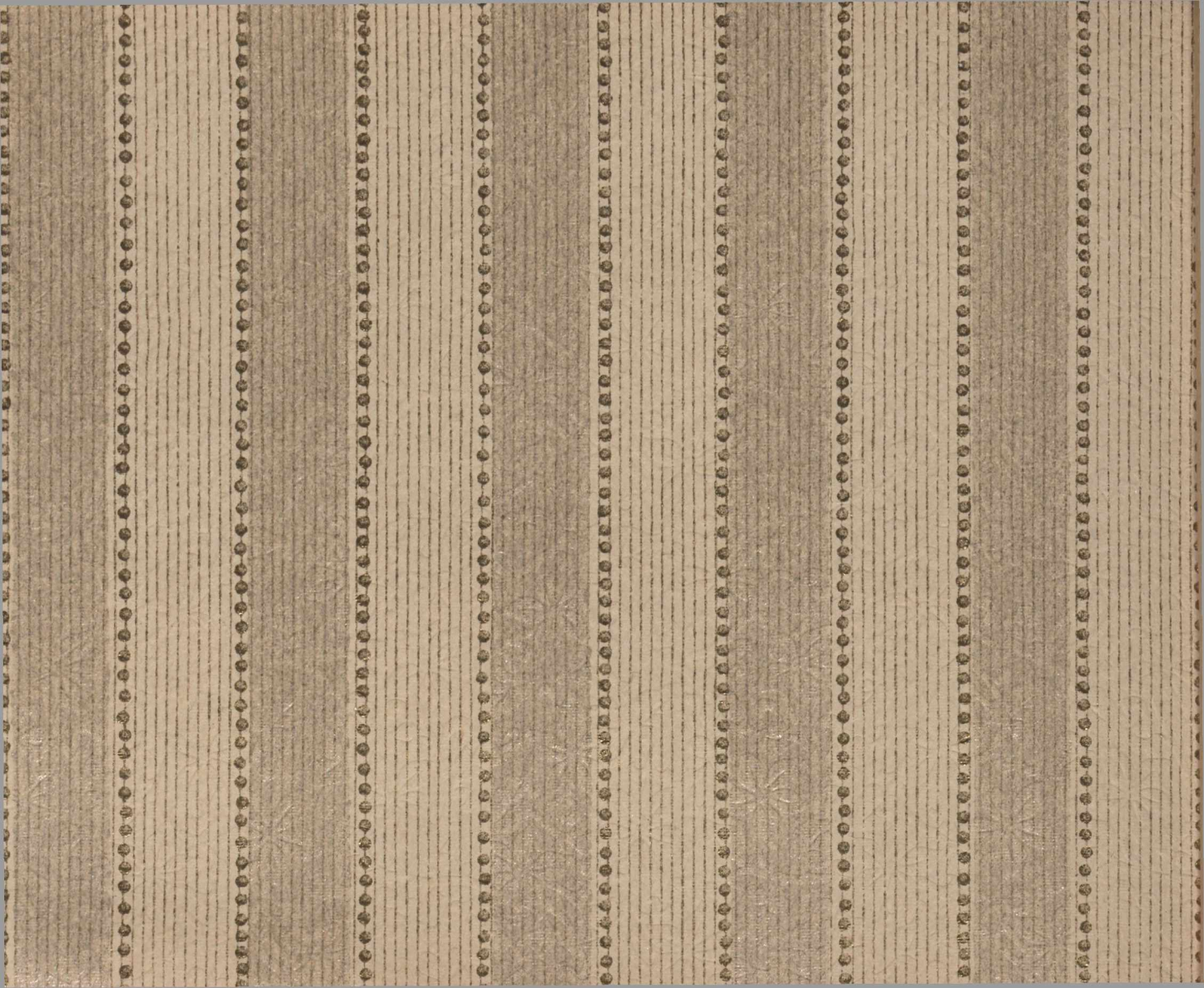
**This Chart Tells You at a Glance How Much  
Wallpaper You Need and What it Will Cost**

Size of Room	Height of Room	No. of Doors	No. of Windows	Single Rolls Sidewall	Single Rolls Ceiling	Yards of Border	Total Cost Room Complete
8 x 10 ft.	8'	1	1	8	3	13	<b>1.84</b>
10 x 12 ft.	8'	1	1	9	4	16	<b>2.20</b>
10 x 14 ft.	8'	2	2	9	4	17	<b>2.24</b>
12 x 12 ft.	8'	2	2	9	5	17	<b>2.36</b>
12 x 14 ft.	8'	2	2	10	5	20	<b>2.60</b>
12 x 16 ft.	9'	2	2	13	6	21	<b>3.12</b>
14 x 16 ft.	9'	2	2	14	7	22	<b>3.40</b>
14 x 18 ft.	9'	2	2	15	8	24	<b>3.72</b>

**T**HE transformed appearance of a small room or a perplexing attic chamber will be a tribute to the shadowy prettiness of this excellent paper. Of course, it is equally qualified for any room that requires a dainty decoration and the small design makes it easy to match when hanging.

The leaf pattern of 8-inch cut-out border is carried out in shades to match side walls and concludes a treatment that expresses good taste.

**Description and Prices Above Are For Reverse Side of This Sheet—Not Design Shown Opposite**



An  
Eminently Suitable  
Wall Hanging for  
**BEDROOM or  
PARLOR**

**OUR  
WALLPAPER  
IS PUT UP IN  
DOUBLE ROLLS  
TO AVOID  
WASTE**

**SIDEWALL**

65-433

Per  
Single  
Roll

**22<sup>c</sup>**

**CEILING**

65-525.

Per Single  
Roll

**22<sup>c</sup>**

**BORDER**

65-633.

8 ins. wide,  
Per Yard

**9<sup>c</sup>**

## STOVE POLISH

**In Paste Form—Easily Applied,  
Produces an Enamel-Like Gloss**

665-571 An enamel gloss is readily produced on stoves,  
grates, ranges or fireplaces by the use of our  
Stove Polish. Comes in paste form and is easily applied  
with a damp cloth. Gross weight, 7 ozs.

Per tin .....

**15c**

**A**MONG its numerous other attractions  
one of the most praiseworthy vir-  
tues of this lovely embossed paper  
lies in the fact that it harmonizes readily  
with a variety of furnishing.

What a lovely climax to this artistic  
decoration is the 8-inch cut-out border,

Aren't its  
nodding roses irresistible and the softly  
blending tones delightful? Truly this is  
a wall-covering that radiates charm.

Description and Prices Above Are For Reverse Side of This Sheet—Not Design Shown Opposite





Designed for

**PARLOR,  
SEWING-ROOM  
or BEDROOM**

**OUR  
WALLPAPER  
IS PUT UP IN  
DOUBLE ROLLS  
TO AVOID  
WASTE**

**SIDEWALL**

65-436

Per  
Single  
Roll

**12<sup>c</sup>**

**CEILING**

65-563.

Per Single  
Roll

**12<sup>c</sup>**

**BORDER**

65-636.

7½ ins. wide,  
Per Yard

**5<sup>c</sup>**

**This Chart Tells You at a Glance How Much  
Wallpaper You Need and What it Will Cost**

Size of Room	Height of Room	No. of Doors	No. of Windows	Single Rolls Sidewall	Single Rolls Ceiling	Yards of Border	Total Cost Room Complete
8 x 10 ft.	8'	1	1	8	3	13	<b>1.97</b>
10 x 12 ft.	8'	1	1	9	4	16	<b>2.36</b>
10 x 14 ft.	8'	2	2	9	4	17	<b>2.41</b>
12 x 12 ft.	8'	2	2	9	5	17	<b>2.53</b>
12 x 14 ft.	8'	2	2	10	5	20	<b>2.80</b>
12 x 16 ft.	9'	2	2	13	6	21	<b>3.33</b>
14 x 16 ft.	9'	2	2	14	7	22	<b>3.62</b>
14 x 18 ft.	9'	2	2	15	8	24	<b>3.96</b>

**J**UST picture this delightful paper in a room that has now an uninviting wall treatment—isn't it easy to imagine the improvement it would make? You could secure quite a unique effect by using it for upper part of walls and having blue or rose oatmeal paper

extend from baseboard up three feet to a card rail. If this treatment is chosen for a nursery the rail would prove very handy to make certain treasures "stay put."

To complete this inexpensive decoration there is a charming 7½-inch cut-out border on which pink wild roses, green leaves and blue birds appear in perfect harmony.

Description and Prices Above Are For Reverse Side of This Sheet—Not Design Shown Opposite



This Appealing  
Combination is  
Designed for  
**LIVING-ROOM,  
HALL, DEN or  
DINING-ROOM**

**OUR  
WALLPAPER  
IS PUT UP IN  
DOUBLE ROLLS  
TO AVOID  
WASTE**

**SIDEWALL**

65-445

Per  
Single  
Roll

**18<sup>c</sup>**

**CEILING**

65-513

Per Single  
Roll

**18<sup>c</sup>**

**BORDER**

65-645

8½ Ins. wide  
Per Yard

**8<sup>c</sup>**

## Adams' Furniture Polish

Per Jar 50c

665-313 This celebrated English Furniture Cream has gained in popularity year after year, until now it is recognized by owners of high-class modern and antique furniture as indispensable to the preservation and beauty of these costly pieces.

Adams' Furniture Polish cleans, polishes and preserves furniture, pianos, cabinets, oilcloths, varnished goods, etc. Directions on jar. Use sparingly.

**Y**OU will emphatically agree that its general utility has been considered of prime importance in the designing of this handsome, good quality paper.

A triumph of artistic skill is the 3½-inch cut-out border

Throughout this excellent decoration achieves an air of distinction seldom associated with a paper of such serviceability.

Description and Prices Above Are For Reverse Side of This Sheet—Not Design Shown Opposite



This Paper is  
Suitable for  
**PARLOR or  
BEDROOM**

**OUR  
WALLPAPER  
IS PUT UP IN  
DOUBLE ROLLS  
TO AVOID  
WASTE**

**SIDEWALL**

65-477

Per  
Single  
Roll

**15<sup>c</sup>**

**CEILING**

65-574

Per Single  
Roll

**14<sup>c</sup>**

**BORDER**

65-677

6 Ins. wide  
Per Yard

**6<sup>c</sup>**

**This Chart Tells You at a Glance How Much  
Wallpaper You Need and What it Will Cost**

Size of Room	Height of Room	No. of Doors	No. of Windows	Single Rolls Sidewall	Single Rolls Ceiling	Yards of Border	Total Cost Room Complete
8 x 10 ft.	8'	1	1	8	3	13	<b>2.40</b>
10 x 12 ft.	8'	1	1	9	4	16	<b>2.87</b>
10 x 14 ft.	8'	2	2	9	4	17	<b>2.93</b>
12 x 12 ft.	8'	2	2	9	5	17	<b>3.07</b>
12 x 14 ft.	8'	2	2	10	5	20	<b>3.40</b>
12 x 16 ft.	9'	2	2	13	6	21	<b>4.05</b>
14 x 16 ft.	9'	2	2	14	7	22	<b>4.40</b>
14 x 18 ft.	9'	2	2	15	8	24	<b>4.81</b>

**P**RICED very moderately is this service-giving paper that is certain to be a favorite, for it is satisfying in pattern and coloring and makes a splendid background for pictures and furniture. This wall covering would prove especially effective with the drop ceiling that is in evidence in so many rooms.

Of special interest is the 6-inch cut-out border that is in deep cream shade and exploits festoons of pink and tea roses, as well as oval motifs, which enclose little birds.

Description and Prices Above Are For Reverse Side of This Sheet—Not Design Shown Opposite



A Warm Toned  
Wall Hanging for  
**DINING-ROOM,**  
**HALL or DEN**

**OUR  
WALLPAPER  
IS PUT UP IN  
DOUBLE ROLLS  
TO AVOID  
WASTE**

**SIDEWALL**

65-419.  
Per  
Single  
Roll **18<sup>c</sup>**

**CEILING**

65-514.  
Per Single  
Roll

**18<sup>c</sup>**

**BORDER**

65-619.  
8½ Ins. wide  
Per Yard

**8<sup>c</sup>**

## Stovepipe Enamel

½-Pint

**20c**

Pint

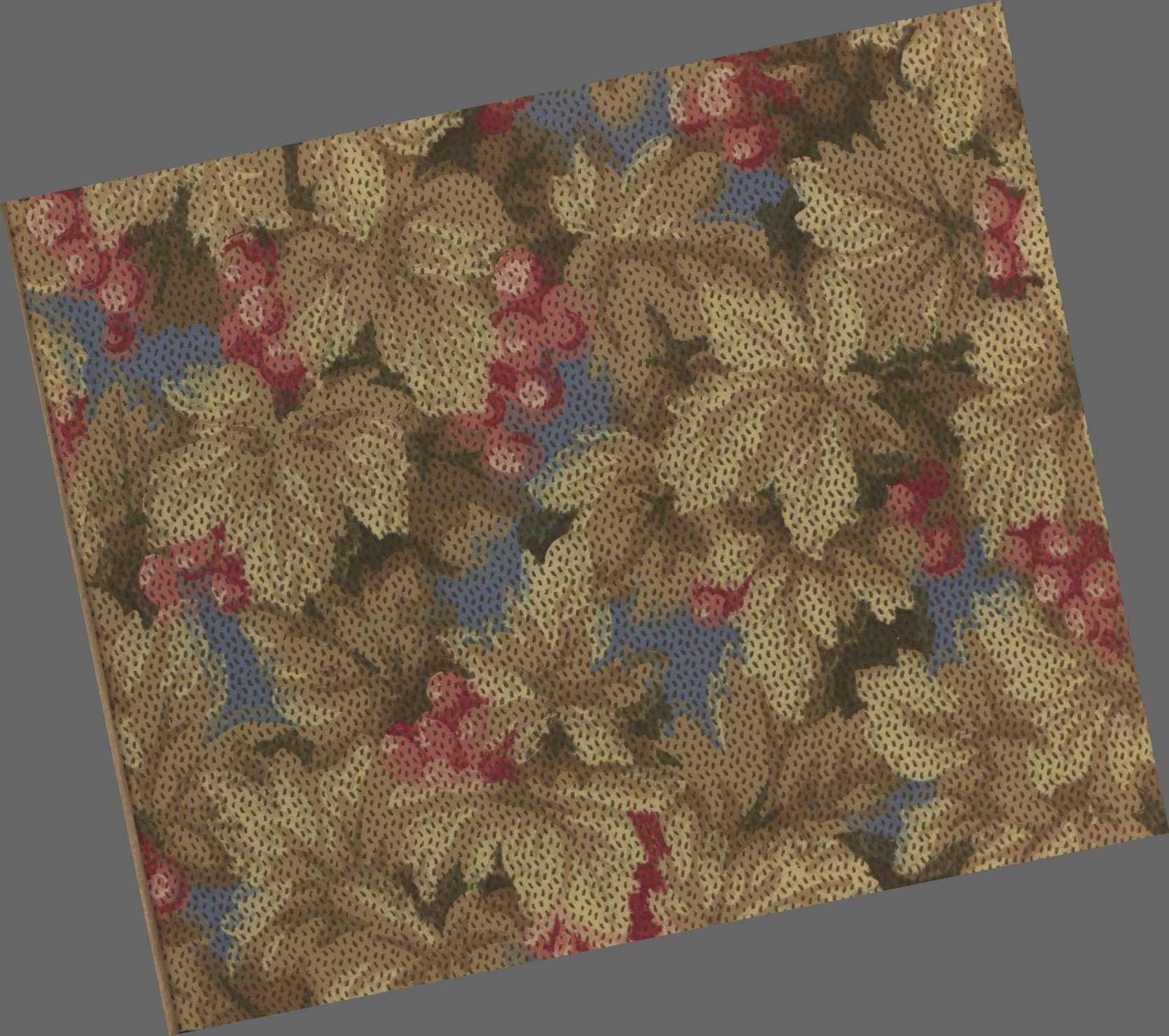
**30c**

665-376 Those rusty stove pipes are going to cost time money to replace them if left without treatment much longer. Our Special Stove Pipe Enamel is prepared for this work. A durable black, glossy finish, that is also suitable for stoves, garden tools, grates, furnaces, etc. Be sure to remove rust, scale or grease from surfaces before applying enamel.

**T**HE tan and golden shades of this rich-looking paper seem to hold and reflect the rays of the sun, thus providing brightness and cheer.

Description and Prices Above Are For Reverse Side of This Sheet—Not Design Shown Opposite





This Well-Covered  
Design May Be  
Used for  
**LIVING-ROOM,  
HALL or  
DINING-ROOM**

**OUR  
WALLPAPER  
IS PUT UP IN  
DOUBLE ROLLS  
TO AVOID  
WASTE**

**SIDEWALL**  
65-441  
Per  
Single  
Roll **15<sup>c</sup>**

**CEILING**  
65-517.  
Per Single  
Roll

**15<sup>c</sup>**

**BORDER**  
65-641.  
7 ins. wide,  
Per Yard

**6<sup>c</sup>**

## BARN PAINT

Gallon	5-Gallon Can	3/4-Eble. of 25 Gallons
<b>1.90</b>	<b>8.75</b>	<b>42.50</b>
665-240 Slate		665-243 Brown
665-241 Red		665-244 Maroon
665-242 Moss Green		

Good common sense demands that farmers, warehouse, garage and factory owners protect their various buildings from the effects of the weather as an economical measure.

EATON Barn Paint combines the best oxides with carefully refined oils, and is therefore to be relied upon for the utmost service on either metal or wood surfaces.

Year by year sees the farmer paying greater attention to the proper preservation of his barns, sheds, fences, silos and pens by regular paint application. One gallon of EATON Barn Paint covers 200 square feet, two coats.

**Y**OU may, indeed, count yourself fortunate that this popular style of paper is available at such a low price, for it is an offering that represents exceptional value.

Its design, which gives the effect of an attractive textile, is well adapted to a room that is given much use. Clusters of fruit are temptingly grouped on the 7-inch cut-out border which reproduces the colors of side walls and shows a conventionalized background.

Description and Prices Above Are For Reverse Side of This Sheet—Not Design Shown Opposite

**M**

**E. EATON CO.**



This Fresh,  
Flowered Paper  
Would Beautify  
**BEDROOM,**  
**PARLOR** or  
**SEWING-ROOM**

**OUR  
WALLPAPER  
IS PUT UP IN  
DOUBLE ROLLS  
TO AVOID  
WASTE**

**SIDEWALL**

65-442.

Per  
Single  
Roll

**17<sup>c</sup>**

**CEILING**

65-510.

Per Single  
Roll

**15<sup>c</sup>**

**BORDER**

65-642.

6 $\frac{1}{2}$  ins. wide.  
Per Yard

**8<sup>c</sup>**

## SHINGLE STAIN

Gallon

**1.60**

5-Gal. Can

**7.50**

$\frac{3}{4}$ -bbbl.  
(25 Gals.)

**33.50**

Colors

665-266. Light Red.

665-267. Dark Red.

665-268. Light Green.

665-269. Medium Green.

665-270. Slate.

665-271. Brown.

Diamond  $\diamond$  Shingle Stain not only preserves shingle roofs, gables, sides, fences, sheds, etc., but it brings out the character of the rough wood used in this style of construction to such an extent that the very roughness accentuates the beauty of the finish.

Shingle Stain is your alternative to loss.

**T**HIS pretty paper liberally scattered with dainty flowers will present a happy, bright aspect all the year around.

Touches of black emphasize the artistic design of the  $\frac{6}{16}$ -inch cut-out border, which shows flowers to match those of side walls massed at lower edge.

A white moulding would make an effective accompaniment to this paper, which will be responsible for a very appealing room.

Description and Prices Above Are For Reverse Side of This Sheet—Not Design Shown Opposite



Equally  
Appropriate for  
**PARLOR,**  
**HALL** or  
**LIVING-ROOM**

**OUR  
WALLPAPER  
IS PUT UP IN  
DOUBLE ROLLS  
TO AVOID  
WASTE**

**SIDEWALL**

65-446

Per  
Single  
Roll

**18<sup>c</sup>**

**CEILING**

65-513

Per Single  
Roll

**18<sup>c</sup>**

**BORDER**

65-646

3½ Ins. wide  
Per Yard

**8<sup>c</sup>**

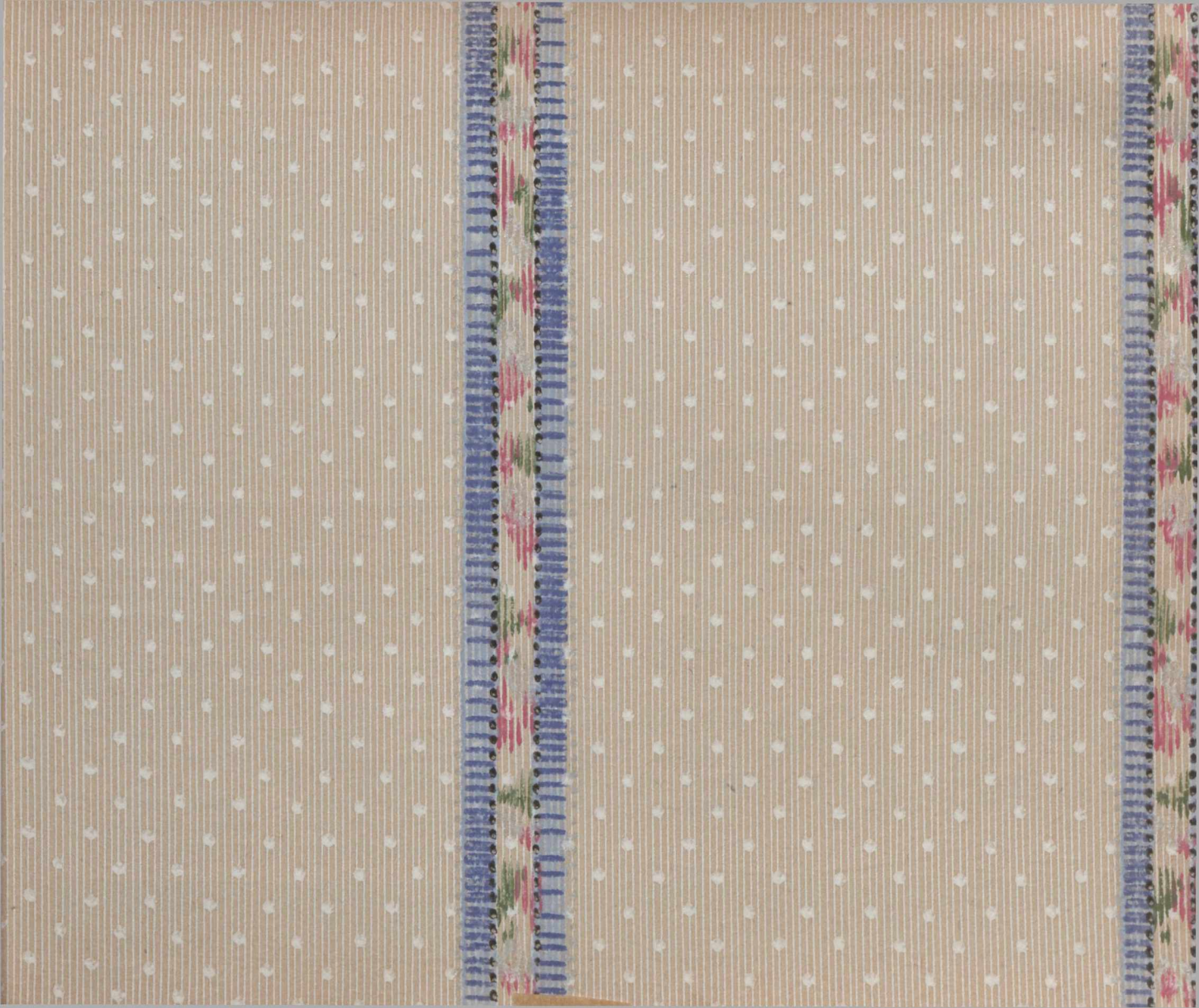
**This Chart Tells You at a Glance How Much  
Wallpaper You Need and What it will Cost**

Size of Room	Height of Room	No. of Rooms	No. of Doors	No. of Windows	Single Rolls Sidewall	Single Rolls Ceiling	Yards of Border	Total Cost Room Complete
8 x 10 ft.	8'	1	1	8	3	13	<b>3.02</b>	
10 x 12 ft.	8'	1	1	9	4	16	<b>3.62</b>	
10 x 14 ft.	8'	2	2	9	4	17	<b>3.70</b>	
12 x 12 ft.	8'	2	2	9	5	17	<b>3.88</b>	
12 x 14 ft.	8'	2	2	10	5	20	<b>4.30</b>	
12 x 16 ft.	9'	2	2	13	6	21	<b>5.10</b>	
14 x 16 ft.	9'	2	2	14	7	22	<b>5.54</b>	
14 x 18 ft.	9'	2	2	15	8	24	<b>6.06</b>	

**T**HE soft shades of this striped paper will appeal to many, and the inexpensive price is a further buying inducement. A particularly inviting room would result if either blue or pink hangings were chosen and the woodwork made freshly white with enamel.

A very beautiful completion to the wall treatment is the 3½-inch cut-out border

Description and Prices Above Are For Reverse Side of This Sheet—Not Design Shown Opposite



A Selection that  
will be Generally  
Approved for  
**BEDROOM,  
NURSERY or  
PARLOR**

**OUR  
WALLPAPER  
IS PUT UP IN  
DOUBLE ROLLS  
TO AVOID  
WASTE**

**SIDEWALL**

65-405

Per  
Single  
Roll

**12<sup>c</sup>**

**CEILING**

65-563

Per Single  
Roll

**12<sup>c</sup>**

**BORDER**

65-605

$7\frac{1}{2}$  inches wide  
Per Yard

**5<sup>c</sup>**

**This Chart Tells You at a Glance How Much  
Wallpaper You Need and What it will Cost**

Size of Room	Height of Room	No. of Doors	No. of Windows	Single Rolls Sidewall	Single Rolls Ceiling	Yards of Border	Total Cost Room Complete
8 x 10 ft.	8'	1	1	8	3	13	<b>1.97</b>
10 x 12 ft.	8'	1	1	9	4	16	<b>2.36</b>
10 x 14 ft.	8'	2	2	9	4	17	<b>2.41</b>
12 x 12 ft.	8'	2	2	9	5	17	<b>2.53</b>
12 x 14 ft.	8'	2	2	10	5	20	<b>2.80</b>
12 x 16 ft.	9'	2	2	13	6	21	<b>3.33</b>
14 x 16 ft.	9'	2	2	14	7	22	<b>3.62</b>
14 x 18 ft.	9'	2	2	15	8	24	<b>3.96</b>

**I**TS GOOD value is the outstanding feature of this wallpaper, and though it is so inexpensive it is also attractive and serviceable.

The colors of the ribbon-like stripe of the side walls are repeated in the cut-out border which is  $7\frac{1}{2}$  inches deep. Trees, birds, wild roses and foliage all lend their charm to this finish for the top of the walls.

Chintz hangings would look exceedingly well with this wall treatment that is sure to meet with general approval.

Description and Prices Above Are For Reverse Side of This Sheet—Not Design Shown Opposite





Specially Designed

for

**KITCHEN,  
BATHROOM or  
PANTRY**

**OUR  
WALLPAPER  
IS PUT UP IN  
DOUBLE ROLLS  
TO AVOID  
WASTE**

**SIDEWALL**

65-417.

Per  
Single  
Roll

**15<sup>c</sup>**

**CEILING**

65-517.

Per Single  
Roll

**15<sup>c</sup>**

**BORDER**

65-617.

6 $\frac{1}{2}$  Ins. Wide  
Per Yard

**5<sup>c</sup>**

**This Chart Tells You at a Glance How Much  
Wallpaper You Need and What it will Cost**

Size of Room	Height of Room	No. of Doors	No. of Windows	Single Rolls Sidewall	Single Rolls Ceiling	Yards of Border	Total Cost Room Complete
8 x 10 ft.	8'	1	1	8	3	13	<b>2.30</b>
10 x 12 ft.	8'	1	1	9	4	16	<b>2.75</b>
10 x 14 ft.	8'	2	2	9	4	17	<b>2.80</b>
12 x 12 ft.	8'	2	2	9	5	17	<b>2.95</b>
12 x 14 ft.	8'	2	2	10	5	20	<b>3.25</b>
12 x 16 ft.	9'	2	2	13	6	21	<b>3.90</b>
14 x 16 ft.	9'	2	2	14	7	22	<b>4.25</b>
14 x 18 ft.	9'	2	2	15	8	24	<b>4.65</b>

**T**HE pretty Dutch scenes on this paper impart such a cheery atmosphere that it is sure to win instant approval as a wall covering. If green burlap is used for lower walls a bright and serviceable decoration will be the result.

In the 6 $\frac{1}{4}$ -inch border the quaint scenes of old Holland are repeated on a more elaborate scale in the same pleasing combination of colors as side walls. The 1 $\frac{1}{2}$ -inch base band will give a very finished appearance to this practical wall treatment.

Description and Prices Above Are For Reverse Side of This Sheet—Not Design Shown Opposite



Richly Toned to  
Provide a Fitting  
Treatment for  
**PARLOR or  
BEDROOM**

This Chart Tells You at a Glance How Much  
Wallpaper You Need and What it Will Cost

Size of Room	Height of Room	No. of Doors	No. of Windows	Single Rolls Sidewall	Single Rolls Ceiling	Yards of Border	Total Cost Room Complete
8 x 10 ft.	8'	1	1	8	3	13	<b>3.59</b>
10 x 12 ft.	8'	1	1	9	4	16	<b>4.30</b>
10 x 14 ft.	8'	2	2	9	4	17	<b>4.39</b>
12 x 12 ft.	8'	2	2	9	5	17	<b>4.61</b>
12 x 14 ft.	8'	2	2	10	5	20	<b>5.10</b>
12 x 16 ft.	9'	2	2	13	6	21	<b>6.07</b>
14 x 16 ft.	9'	2	2	14	7	22	<b>6.60</b>
14 x 18 ft.	9'	2	2	15	8	24	<b>7.22</b>

**OUR  
WALLPAPER  
IS PUT UP IN  
DOUBLE ROLLS  
TO AVOID  
WASTE**

**SIDEWALL**  
65-427.  
Per  
Single  
Roll **15<sup>c</sup>**

**CEILING**  
65-525.  
Per Single  
Roll **22<sup>c</sup>**

**BORDER**  
65-627.  
7 ins. wide  
Per Yard **9<sup>c</sup>**

**T**HERE'S no denying the distinctive, handsome effect achieved by an embossed paper, of which this is a particularly rich-looking example.

Large flowers in pastel tints, outlined with gilt, are shown gracefully nestled against their foliage on the 7-inch cut-out border.

Although of subdued tones, this charming paper has quite enough color to lend brightness to a room inclined to be dark.

Description and Prices Above Are For Reverse Side of This Sheet—Not Design Shown Opposite



A  
Simple Treatment  
for  
**BEDROOM or  
PARLOR**

**OUR  
WALLPAPER  
IS PUT UP IN  
DOUBLE ROLLS  
TO AVOID  
WASTE**

**SIDEWALL**

65-410

Per  
Single  
Roll

**15<sup>c</sup>**

**CEILING**

65-510

Per Single  
Roll

**15<sup>c</sup>**

**BORDER**

65-610

8 ins. wide  
Per Yard

**6<sup>c</sup>**

**WAGON PAINT**

Quart  
**90c**

½-Gallon  
**1.65**

Gallon  
**3.20**

Colors: Red, Green, Yellow, Black.

665-330 Your wagon, trucks, tools, farm implements, etc., are continually being exposed to hard wear, and the decaying effect of frost, rain and sun. They must be protected. Diamond  $\diamond$  Wagon Paint regularly applied will preserve them from deterioration and consequently keep up their value. It dries with a hard, glossy finish and will give long service.

**W**ALLPAPERS in which dainty shades of blue predominate always have ardent admirers, and this one is a particularly happy illustration of their charm.

The 8-inch border is quite pretentious in design with its interesting architecture in shadowy blue tones and masses of full-blown roses. Prim little editions of the latter grace the 1½-inch baseband which gives such a finished air to this delightful paper which might very fittingly be used for the guest room.

Description and Prices Above Are For Reverse Side of This Sheet—Not Design Shown Opposite



A Tapestry Effect  
of Exceptional  
Merit for  
**DINING-ROOM,  
HALL or  
LIVING-ROOM**

**OUR  
WALLPAPER  
IS PUT UP IN  
DOUBLE ROLLS  
TO AVOID  
WASTE**

**SIDEWALL**

65-444.  
Per  
Single  
Roll

**19<sup>c</sup>**

**CEILING**

65-513.

Per Single  
Roll

**18<sup>c</sup>**

**BORDER**

65-644.

3 ins. wide  
Per Yard

**9<sup>c</sup>**

## KNO-LEAK

A Liquid Waterproofing for Roofs

Gallon	5-Gal. Can	½-bbls. of 25 Gal.
1.40	6.25	25.00

665-382 Used for preserving shingles, tin, iron, felt or composition rubber roofing. Leaky roofs can be made watertight with Kno-Leak. It is also a coating for gravel roofs or for new roofing to preserve and prevent leaks at nail holes. (For large holes use Roof Cement).

ONE and all will be unanimous in declaring this interesting wallpaper extraordinary value.

Notice how beautifully the richly-colored leaves of the sidewall stand out against the shadowy scenery of the background, and what a delightful effect the gilt overcheck gives. The 3-inch border is designed along similar lines and tints, but introduces handsome architecture to give a more formal atmosphere.

If you are seeking a wall-covering that is cheery and serviceable you will be well pleased with this very moderately-priced design.

Description and Prices Above Are For Reverse Side of This Sheet—Not Design Shown Opposite





A Neatly Designed  
Hanging for  
**BEDROOM or  
PARLOR**

OUR  
WALLPAPER  
IS PUT UP IN  
DOUBLE ROLLS  
TO AVOID  
WASTE

**SIDEWALL**

65-476.

Per  
Single  
Roll

**15<sup>c</sup>**

**CEILING**

65-574.  
Per Single  
Roll

**14<sup>c</sup>**

**BORDER**

65-676.  
6 Inches Wide  
Per Yard

**6<sup>c</sup>**

This Chart Tells You at a Glance How Much  
Wallpaper You Need and What it will Cost

Size of Room	Height of Room	No. of Doors	No. of Windows	Single Rolls Sidewall	Single Rolls Ceiling	Yards of Border	Total Cost Room Complete
8 x 10 ft.	8'	1	1	8	3	13	<b>2.40</b>
10 x 12 ft.	8'	1	1	9	4	16	<b>2.87</b>
10 x 14 ft.	8'	2	2	9	4	17	<b>2.93</b>
12 x 12 ft.	8'	2	2	9	5	17	<b>3.07</b>
12 x 14 ft.	8'	2	2	10	5	20	<b>3.40</b>
12 x 16 ft.	9'	2	2	13	6	21	<b>4.05</b>
14 x 16 ft.	9'	2	2	14	7	22	<b>4.40</b>
14 x 18 ft.	9'	2	2	15	8	24	<b>4.81</b>

THE dainty pink flowers that climb this appealing paper find the putty-colored background increases their prettiness. There is an air of old-time charm about this effective decoration that one associates with the chintz hangings and handsome furnishings of the Colonial days.

Little birds and masses of pink roses are artistic features of the 6-inch cut-out border in which fine black lines and touches of pink play an important part.

Description and Prices Above Are For Reverse Side of This Sheet—Not Design Shown Opposite



Designed to Create  
an Atmosphere of  
Refinement in  
**PARLOR,  
LIVING-ROOM or  
HALL**

**OUR  
WALLPAPER  
IS PUT UP IN  
DOUBLE ROLLS  
TO AVOID  
WASTE**

**SIDEWALL**

65-449.

Per  
Single  
Roll

**20<sup>c</sup>**

**CEILING**

65-513.  
Per Single  
Roll

**18<sup>c</sup>**

**BORDER**

65-649.  
8½ Ins. Wide  
Per Yard

**This Chart Tells You at a Glance How Much  
Wallpaper You Need and What it will Cost**

Size of Room	Height of Room	No. of Doors	No. of Windows	Single Rolls Sidewall	Single Rolls Ceiling	Yards of Border	Total Cost Room Complete
8 x 10 ft.	8'	1	1	8	3	13	<b>3.31</b>
10 x 12 ft.	8'	1	1	9	4	16	<b>3.96</b>
10 x 14 ft.	8'	2	2	9	4	17	<b>4.05</b>
12 x 12 ft.	8'	2	2	9	5	17	<b>4.23</b>
12 x 14 ft.	8'	2	2	10	5	20	<b>4.70</b>
12 x 16 ft.	9'	2	2	13	6	21	<b>5.57</b>
14 x 16 ft.	9'	2	2	14	7	22	<b>6.04</b>
14 x 18 ft.	9'	2	2	15	8	24	<b>6.60</b>

**T**APESTRY designs continue to be immensely popular, and they are in great demand for halls and downstairs rooms, but very seldom are they procurable at this low price. On this serviceable paper you will find that gilt tracery is employed to outline the softly-colored tapestry pattern and the whole effect is indeed attractive.

Description and Prices Above Are For Reverse Side of This Sheet—Not Design Shown Opposite



Appropriate  
 Decoration For  
**PARLOR,**  
**BEDROOM** or  
**SITTING-ROOM**

This Chart Tells You at a Glance How Much  
 Wallpaper You Need and What it Will Cost

Size of Room	Height of Room	No. of Doors	No. of Windows	Single Rolls Sidewall	Single Rolls Ceiling	Yards of Border	Total Cost Room Complete
8 x 10 ft.	8'	1	1	8	3	13	<b>2.78</b>
10 x 12 ft.	8'	1	1	9	4	16	<b>3.33</b>
10 x 14 ft.	8'	2	2	9	4	17	<b>3.40</b>
12 x 12 ft.	8'	2	2	9	5	17	<b>3.57</b>
12 x 14 ft.	8'	2	2	10	5	20	<b>3.95</b>
12 x 16 ft.	9'	2	2	13	6	21	<b>4.70</b>
14 x 16 ft.	9'	2	2	14	7	22	<b>5.11</b>
14 x 18 ft.	9'	2	2	15	8	24	<b>5.59</b>

**OUR  
 WALLPAPER  
 IS PUT UP IN  
 DOUBLE ROLLS  
 TO AVOID  
 WASTE**

**SIDEWALL**

65-478.

Per  
 Single  
 Roll

**17<sup>c</sup>**

**CEILING**  
 65-578.

Per Single  
 Roll

**17<sup>c</sup>**

**BORDER**  
 65-678.

8 Ins. wide  
 Per Yard

**7<sup>c</sup>**

**J**UST look at the low price of this good-quality Tapestry paper that is so appealing in its dainty coloring! For a very small outlay you will be able to decorate a room with this delightful wall covering and you will doubtless decide to have all the woodwork spotlessly white,

Interesting scenes and a floral and foliage design in more intense tones than those used on side walls, make up the attractive 8-inch out-out border.

Description and Prices Above Are For Reverse Side of This Sheet—Not Design Shown Opposite

# Our Prices For Wallpaper Are For Single Rolls—Sufficient To Cover 35 Sq. Feet.

---

Our Regular Wallpapers  
are Put Up Two Rolls To  
The Piece.

Oatmeal Papers are Put Up  
Three Rolls To The Piece—  
This is Done to Avoid  
Waste.

When You Order 6 Rolls  
of Paper, Therefore, Expect  
to Receive Only 2 or 3  
Pieces.

Borders are Sold by the  
Single Yard, even though 2  
Yards of Border are Printed  
on One Yard of Paper.

# Don't Waste Time and Patience

To Figure the Amount of Paper  
You Need—Use This Chart!

**Note**—For every two openings, deduct one single roll sidewall. One single roll of wallpaper covers 35 square feet.

To ascertain the number of rolls required for ceilings of long hallways, multiply the length by the width in feet and divide by 35, which will give the number of single rolls required.

**Refer to This Chart Before Placing Your Order. It Will Prevent Waste or Shortage.**

**Note.**—For every two openings, deduct one single roll sidewall. One single roll of wallpaper covers 35 square feet. To ascertain the number of rolls required for ceilings of long hallways, multiply the length by the width in feet and divide by 35, which will give the number of single rolls required.

Distance around room in ft.	Single rolls of sidewall required according to height of room					Single rolls of Ceiling	Yards of Border
	8 ft.	9 ft.	10 ft.	11 ft.	12 ft.		
30	7	8	9	10	11	2	11
32	8	9	10	11	11	2	12
34	8	9	10	11	12	3	12
36	9	10	11	12	13	3	13
38	9	10	11	12	14	3	14
40	10	11	12	13	14	3	14
42	10	11	12	14	15	4	14
44	11	12	13	14	16	4	15
46	11	12	14	15	16	4	16
48	12	13	14	16	17	5	17
50	12	13	15	16	18	5	18
52	12	14	15	17	18	5	19
54	13	14	16	17	19	6	19
56	13	15	16	18	20	6	20
58	14	15	17	19	20	6	21
60	14	16	18	19	21	7	21
62	15	16	18	20	22	7	22
64	15	17	19	21	22	7	23
66	16	18	19	21	23	8	23
68	16	18	20	22	24	9	24
70	16	18	20	22	24	9	24
72	17	19	21	23	25	10	25
74	17	20	22	24	26	10	26
76	18	20	22	24	27	11	27
78	18	21	23	25	27	11	27
80	19	21	23	26	28	12	28
82	19	22	24	26	29	12	29
84	20	22	24	27	29	13	29





Suitably Colored  
and Designed  
for  
**PARLOR or  
BEDROOM**

**OUR  
WALLPAPER  
IS PUT UP IN  
DOUBLE ROLLS  
TO AVOID  
WASTE**

**SIDEWALL**

65-426  
Per  
Single  
Roll

**15<sup>c</sup>**

**CEILING**  
65-525.  
Per Single  
Roll

**22<sup>c</sup>**

**BORDER**  
65-626.  
7¼ Ins. wide  
Per Yard

**9<sup>c</sup>**

## BOAT VARNISH

Pint

**80<sup>c</sup>**

Quart

**1.55**

665-421 For rowboat, dinghy, launch or canoe, EATON Boat Varnish is also used for paddles, boat-houses or any surface exposed to water, dampness or weather. A suitable brush for this work is shown on page No. 273, general catalogue, under No. 665-516.

**T**HE quiet dignity of this good-looking embossed paper will win much esteem for it. If accompanied by rose hangings a room of exceeding charm will reward your efforts.

Dull rose-colored flowers glow softly against their graceful foliage on the 7¼-inch cut-out border and traceries of gilt enhance its artistic design. Either a parlor or bedroom would respond successfully to this artistic treatment.

Description and Prices Above Are For Reverse-Side of This Sheet—Not Design Shown Opposite



Correct in Style and  
Color for Either  
**BEDROOM** or  
**PARLOR**

**OUR  
WALLPAPER  
IS PUT UP IN  
DOUBLE ROLLS  
TO AVOID  
WASTE**

**CEILING**  
65-510.  
Per Single  
Roll

**15<sup>c</sup>**

**SIDEWALL**

65-424.  
Per  
Single  
Roll

**17<sup>c</sup>**

**BORDER**  
65-624.  
6½ ins. wide  
Per Yard

**8<sup>c</sup>**

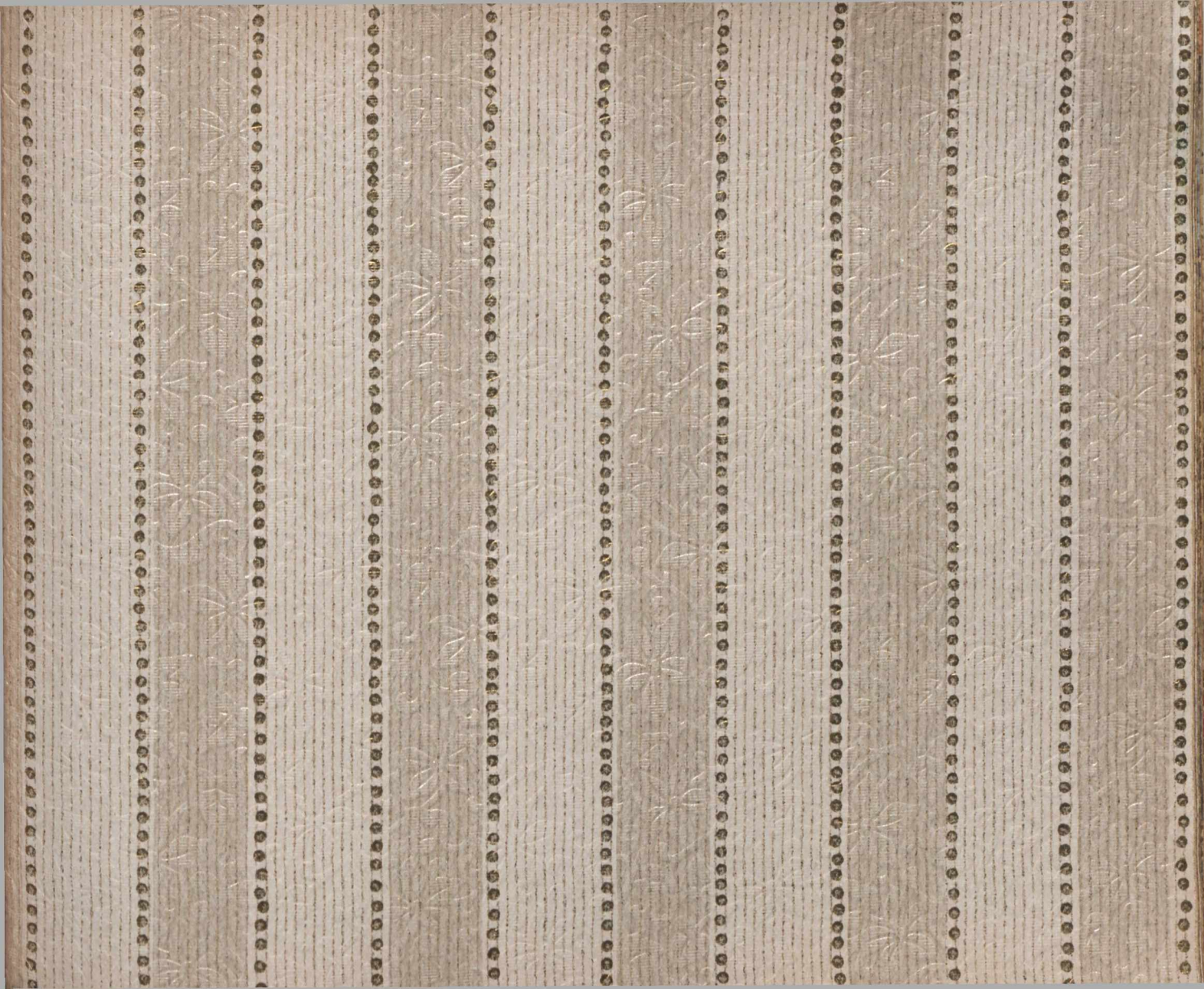
**This Chart Tells You at a Glance How Much  
Wallpaper You Need and What it Will Cost**

Size of Room	Height of Room	No. of Doors	No. of Windows	Single Rolls Sidewall	Single Rolls Ceiling	Yards of Border	Total Cost Room Complete
8 x 10 ft.	8'	1	1	8	3	13	<b>2.85</b>
10 x 12 ft.	8'	1	1	9	4	16	<b>3.41</b>
10 x 14 ft.	8'	2	2	9	4	17	<b>3.49</b>
12 x 12 ft.	8'	2	2	9	5	17	<b>3.64</b>
12 x 14 ft.	8'	2	2	10	5	20	<b>4.05</b>
12 x 16 ft.	9'	2	2	13	6	21	<b>4.79</b>
14 x 16 ft.	9'	2	2	14	7	22	<b>5.19</b>
14 x 18 ft.	9'	2	2	15	8	24	<b>5.67</b>

**Y**OU know what a difference a light paper makes in a cold-looking room, so this moderately priced wall covering would be an admirable selection for a room that faces north or east, and so does not get much sunlight.

This sample shows the pretty design and colorings of the stripes on side walls and equally attractive is the 6½-inch cut-out border. It has sketchy little scenes done in gilt, but is principally composed of a floral pattern carried out in rose, blue, green and tan.

Description and Prices Above Are For Reverse Side of This Sheet—Not Design Shown Opposite



A Delightful  
Selection for  
**PARLOR or  
BEDROOM**

**OUR  
WALLPAPER  
IS PUT UP IN  
DOUBLE ROLLS  
TO AVOID  
WASTE**

65-432  
Per  
Single  
Roll

**SIDEWALL**

**22<sup>c</sup>**

**CEILING**  
65-525.  
Per Single  
Roll

**22<sup>c</sup>**

**BORDER**  
65-632.  
8 ins. wide,  
Per Yard

**9<sup>c</sup>**

**This Chart Tells You at a Glance How Much  
Wallpaper You Need and What it Will Cost**

Size of Room	Height of Room	No. of Doors	No. of Windows	Single Rolls Sidewall	Single Rolls Ceiling	Yards of Border	Total Cost Room Complete
8 x 10 ft.	8'	1	1	8	3	13	<b>3.59</b>
10 x 12 ft.	8'	1	1	9	4	16	<b>4.30</b>
10 x 14 ft.	8'	2	2	9	4	17	<b>4.39</b>
12 x 12 ft.	8'	2	2	9	5	17	<b>4.61</b>
12 x 14 ft.	8'	2	2	10	5	20	<b>5.10</b>
12 x 16 ft.	9'	2	2	13	6	21	<b>6.07</b>
14 x 16 ft.	9'	2	2	14	7	22	<b>6.60</b>
14 x 18 ft.	9'	2	2	15	8	24	<b>7.22</b>

**T**O fully realize the beautiful effect of this embossed paper you must see it on the walls, and if the room is small you will be surprised to find that this decoration makes it appear larger.

Rich-looking gilt is used for hair line stripes that cover entire surface, and for dots that border the lustrous stripes. Lovely, indeed, is the 8-inch cut-out border with its full blown pink roses, soft grey foliage and tracings of gilt;

Description and Prices Above Are For Reverse Side of This Sheet—Not Design Shown Opposite



Suitable for the  
 Decoration of  
**PARLOR or  
 BEDROOM**

**OUR  
 WALLPAPER  
 IS PUT UP IN  
 DOUBLE ROLLS  
 TO AVOID  
 WASTE**

**CEILING**  
 65-525.  
 Per Single  
 Roll

**22<sup>c</sup>**

**SIDEWALL**

65-425  
 Per  
 Single  
 Roll

**15<sup>c</sup>**

**BORDER**  
 65-625.  
 7 ins. wide  
 Per Yard

**9<sup>c</sup>**

## AUTO AND CARRIAGE PAINT

Pint  
**80c**

Quart  
**1.40**

Colors

665-369. Yellow  
 665-370. Auto Grey  
 665-371. Black.

665-372. Wine.  
 665-373. Rich Dark Green.  
 665-374. Brewster Green.

There's not the slightest doubt that an automobile or carriage with a dull or marred finish loses heavily when appreciated for value. This is of interest to anyone about to buy, sell or keep either; for the gain goes to the man that realizes the fact that paint properly applied increases the value out of all proportion to the cost of the paint. EATON Auto and Carriage Paint gets the desired results.

**P**ALE green, that is such a restful color, and rich-looking touches of gilt combine beautifully in this good quality embossed paper. To enhance the dainty effect of the room you might use white moulding

and make the woodwork look delightfully fresh with the gloss white enamel described on inside back cover.

The lovely 7-inch cut-out border mingles rose, green, and gilt in its conventional floral pattern, and it will make a charming completion to a very successful room.

Description and Prices Above Are For Reverse Side of This Sheet—Not Design Shown Opposite





This Paper is suitable  
for  
**HALL, DEN,  
DINING-ROOM  
or LIBRARY**

**OUR  
WALLPAPER  
IS PUT UP IN  
DOUBLE ROLLS  
TO AVOID  
WASTE**

**CEILING**  
65-514.  
Per Single  
Roll

**18<sup>c</sup>**

**SIDEWALL**

65-447.  
Per  
Single  
Roll

**18<sup>c</sup>**

**BORDER**  
65-647.  
8½ ins. wide.  
Per Yard

**8<sup>c</sup>**

## Furniture Varnish

Pint **40c** Quart **75c** ½ Gal. **1.30** Gal. **2.45**

665-426 The re-finishing of chairs, tables, cabinets, dressers, etc., is so easily and quickly accomplished with "Diamond  $\diamond$  Furniture Varnish," that it will eventually become part of regular spring cleaning generally. Knowing the ease with which varnished surfaces are kept clean and bright, it is surely a mistake to leave them in a dried-up dull state when the necessary varnish can be procured at this low price.

It is a modern and prevailing idea that a wallpaper is successful only when it makes a harmonious background for pictures and furnishings.

This cheerful and artistic paper will, therefore, create a good impression which the effective cut-out border will tend to enhance. It measures 8½ inches wide,

Description and Prices Above Are For Reverse Side of This Sheet—Not Design Shown Opposite



This Superior Design Would Be Well Chosen for  
**BEDROOM,  
 PARLOR or  
 SITTING-ROOM**

**OUR  
 WALLPAPER  
 IS PUT UP IN  
 DOUBLE ROLLS  
 TO AVOID  
 WASTE**

**CEILING**  
 65-513.  
 Per Single  
 Roll

**18<sup>c</sup>**

**SIDEWALL**

65-443  
 Per  
 Single  
 Roll

**19<sup>c</sup>**

**BORDER**  
 65-643.  
 8 ins. wide  
 Per Yard

**9<sup>c</sup>**

**This Chart Tells You at a Glance How Much  
 Wallpaper You Need and What it will Cost**

Size of Room	Height of Room	No. of Doors	No. of Windows	Single Rolls Sidewall	Single Rolls Ceiling	Yards of Border	Total Cost Room Complets
8 x 10 ft.	8'	1	1	8	3	13	<b>3.23</b>
10 x 12 ft.	8'	1	1	9	4	16	<b>3.87</b>
10 x 14 ft.	8'	2	2	9	4	17	<b>3.96</b>
12 x 12 ft.	8'	2	2	9	5	17	<b>4.14</b>
12 x 14 ft.	8'	2	2	10	5	20	<b>4.60</b>
12 x 16 ft.	9'	2	2	13	6	21	<b>5.44</b>
14 x 16 ft.	9'	2	2	14	7	22	<b>5.90</b>
14 x 18 ft.	9'	2	2	15	8	24	<b>6.45</b>

**T**HIS interesting version of the popular Tapestry design is a combination of scenic and foliage effects, and it introduces fascinating touches of gilt in its checked over-pattern. It will prove a very satisfactory choice for almost any type of room.

Grecian pillars and railing add a dignified note to the 8-inch border that repeats the colorings and design of the side walls. A point that will bear emphasizing is the decidedly moderate price of this artistic decoration.

Description and Prices Above Are For Reverse Side of This Sheet—Not Design Shown Opposite



This Sample  
Suggests a Radiant  
Treatment for the  
**DINING-ROOM,  
HALL, DEN, or  
LIVING-ROOM**

**OUR  
WALLPAPER  
IS PUT UP IN  
DOUBLE ROLLS  
TO AVOID  
WASTE**

**CEILING**  
65-414.  
Per Single  
Roll

**18<sup>c</sup>**

**SIDEWALL**

65-462.  
Per  
Single  
Roll

**19<sup>c</sup>**

**BORDER**  
65-662.  
8 ins. wide  
Per Yard

**9<sup>c</sup>**

**This Chart Tells You at a Glance How Much  
Wallpaper You Need and What it will Cost**

Size of Room	Height of Room	No. of Doors	No. of Windows	Single Rolls Sidewall	Single Rolls Ceiling	Yards of Border	Total Cost Room Complete
8 x 10 ft.	8'	1	1	8	3	13	<b>3.23</b>
10 x 12 ft.	8'	1	1	9	4	16	<b>3.87</b>
10 x 14 ft.	8'	2	2	9	4	17	<b>3.96</b>
12 x 12 ft.	8'	2	2	9	5	17	<b>4.14</b>
12 x 14 ft.	8'	2	2	10	5	20	<b>4.60</b>
12 x 16 ft.	9'	2	2	13	6	21	<b>5.44</b>
14 x 16 ft.	9'	2	2	14	7	22	<b>5.90</b>
14 x 18 ft.	9'	2	2	15	8	24	<b>6.45</b>

**T**HERE are one or more rooms in every home that really need decorating. Look yours over.

If it is just one in your case—and it happens to be either of the down-stair rooms—we recommend this bold, rich tapestry design for its beauty and truly remarkable value. Its 8-inch border repeats the color and design of the side-wall to complete a very striking wall treatment.

Description and Prices Above Are For Reverse Side of This Sheet—Not Design Shown Opposite



This Design is  
 Suitable for  
**DINING-ROOM,  
 HALL,  
 LIVING-ROOM  
 or DEN**

**OUR  
 WALLPAPER  
 IS PUT UP IN  
 DOUBLE ROLLS  
 TO AVOID  
 WASTE**

**SIDEWALL**

65-450.

Per  
 Single  
 Roll

**20<sup>c</sup>**

**CEILING**

65-514.

Per Single  
 Roll

**18<sup>c</sup>**

**BORDER**

65-650.

8½ ins. wide.  
 Per Yard

**9<sup>c</sup>**

## AUTO VARNISH

Pint  
**80c**

Quart  
**1.50**

665-420 The original finish of your Auto or Carriage can be preserved indefinitely if treated with "EATON Auto Varnish" before commencing each season. No discoloration will result from its use even on the lightest shade of body. One quart will be sufficient to restore the bright, hard gloss that preserves the paint on the average car.

ITS fabric-like appearance makes this paper a very distinctive wall covering, and it certainly has the effect of a much more expensive decoration. The coloring and quality speak well, too, for the service it will give.

Description and Prices Above Are For Reverse Side of This Sheet—Not Design Shown Opposite





This Paper is  
Suitable for  
**LIVING-ROOM,  
HALL,  
LIBRARY or  
DINING-ROOM**

**OUR  
WALLPAPER  
IS PUT UP IN  
DOUBLE ROLLS  
TO AVOID  
WASTE**

65-457.  
Per  
Single  
Roll

**29<sup>c</sup>**

**SIDEWALL**

**CEILING**  
65-535.  
Per Single  
Roll

**25<sup>c</sup>**

**BORDER**  
65-657.  
8 Ins. wide.  
Per Yard

**10<sup>c</sup>**

**This Chart Tells You at a Glance How Much  
Wallpaper You Need and What it Will Cost**

Size of Room	Height of Room	No. of Doors	No. of Windows	Single Rolls Sidewall	Single Rolls Ceiling	Yards of Border	Total Cost Room Complete
8 x 10 ft.	8'	1	1	8	3	13	<b>4.37</b>
10 x 12 ft.	8'	1	1	9	4	16	<b>5.21</b>
10 x 14 ft.	8'	2	2	9	4	17	<b>5.31</b>
12 x 12 ft.	8'	2	2	9	5	17	<b>5.56</b>
12 x 14 ft.	8'	2	2	10	5	20	<b>6.15</b>
12 x 16 ft.	9'	2	2	13	6	21	<b>7.37</b>
14 x 16 ft.	9'	2	2	14	7	22	<b>8.01</b>
14 x 18 ft.	9'	2	2	15	8	24	<b>8.75</b>

**A** DESIGN such as this is usually reserved to papers of a much higher price. By selecting this paper, therefore, you benefit by this advantage. What could be more attractive than its artistic coloring? Each of its many colors run from the palest conceivable shade to the limit of intensity, which tends to simplify the task of completing your color scheme for other furnishings. The band border provided for it is 8 inches wide.

Description and Prices Above Are For Reverse Side of This Sheet—Not Design Shown Opposite



You Will Have Good Cause  
for Satisfaction Having  
Chosen This Splendid  
Design for Your  
**DINING-ROOM,  
HALL, DEN or  
LIVING-ROOM**

**OUR  
WALLPAPER  
IS PUT UP IN  
DOUBLE ROLLS  
TO AVOID  
WASTE**

**CEILING  
65-553.  
Per Single  
Roll**

**22<sup>c</sup>**

**SIDEWALL**

**65-454  
Per  
Single  
Roll**

**25<sup>c</sup>**

**BORDER  
65-654.  
7½ Ins. wide,  
Per Yard**

**10<sup>c</sup>**

**This Chart Tells You at a Glance How Much  
Wallpaper You Need and What it Will Cost**

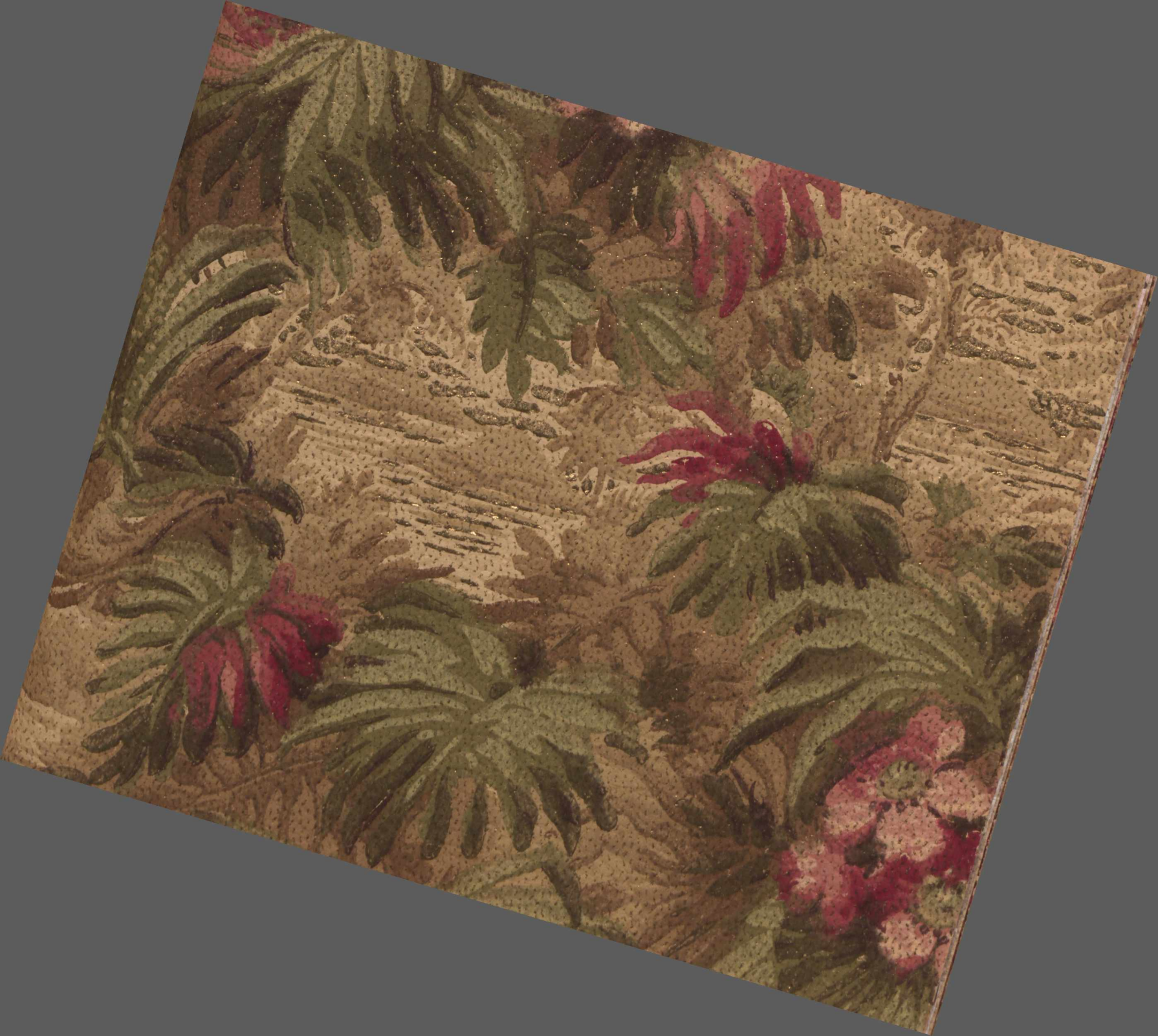
Size of Room	Height of Room	No. of Doors	No. of Windows	Single Rolls Sidewall	Single Rolls Ceiling	Yards of Border	Total Cost Room Complete
8 x 10 ft.	8'	1	1	8	3	13	<b>3.96</b>
10 x 12 ft.	8'	1	1	9	4	16	<b>4.73</b>
10 x 14 ft.	8'	2	2	9	4	17	<b>4.83</b>
12 x 12 ft.	8'	2	2	9	5	17	<b>5.05</b>
12 x 14 ft.	8'	2	2	10	5	20	<b>5.60</b>
12 x 16 ft.	9'	2	2	13	6	21	<b>6.67</b>
14 x 16 ft.	9'	2	2	14	7	22	<b>7.24</b>
14 x 18 ft.	9'	2	2	15	8	24	<b>7.91</b>

ITS excellent quality and beautiful design mark this good-looking embossed decoration as being really remarkable value. Like many of the new wallpapers, the pattern is apparent, but not too distinct, thus banishing any suggestion of monotony.

The 7½-inch cut-out border, uses in darker tones the colors of side walls and effects an impressive design, which combines scenic panels with handsome motifs.

**Description and Prices Above Are For Reverse Side of This Sheet—Not Design Shown Opposite**

**T. EATON CO.**



A Treatment  
That Will Impart  
Comfort To  
**HALL, DINING-  
ROOM, DEN or  
LIVING-ROOM**

**OUR  
WALLPAPER  
IS PUT UP IN  
DOUBLE ROLLS  
TO AVOID  
WASTE**

**SIDEWALL**

65-459  
Per  
Single  
Roll

**29<sup>c</sup>**

**CEILING**  
65-535  
Per Single  
Roll

**25<sup>c</sup>**

**BORDER**  
65-659  
8 inches wide  
Per Yard

**10<sup>c</sup>**

## HIGH-GRADE FLOOR VARNISH

Pint **65c** Quart **1.15** ½ Gal. **2.10** Gal. **3.85**

665-422 You are looking for EATON High-grade Floor Varnish if you require a floor finish of extreme durability, elasticity and beauty. It is our best product for all kinds of interior floors, linoleums, oilcloths, etc., and will not turn white from scratching, water or steam leaks.

The good reputation gained for this varnish we wish to maintain and broaden so that every care is taken in its manufacture to ensure satisfactory results from its use. Covering capacity 300 square feet per gallon, two coats.

**R**ESTFULNESS is the keynote of this beautiful embossed paper. Palm leaves, the outstanding feature of the design, seem to create the soothing effect one so often seeks when a nerve-testing day is over. Rarely is so desirable a wall decoration procurable at this moderate price. The design is again carried out in the 8-inch border, which is tastefully blended in color with the side-wall.

Description and Prices Above Are For Reverse Side of This Sheet—Not Design Shown Opposite



By Color and Design,  
A Fitting  
Decoration for  
**LIVING-ROOM,  
PARLOR or  
SITTING-ROOM**

**OUR  
WALLPAPER  
IS PUT UP IN  
DOUBLE ROLLS  
TO AVOID  
WASTE**

**SIDEWALL**

65-458

Per  
Single  
Roll

**29<sup>c</sup>**

**CEILING**

65-558

Per Single  
Roll

**25<sup>c</sup>**

**BORDER**

65-658

8 in. wide  
Per Yard

**10<sup>c</sup>**

**This Chart Tells You at a Glance How Much  
Wallpaper You Need and What it Will Cost**

Size of Room	Height of Room	No. of Doors	No. of Windows	Single Rolls Sidewall	Single Rolls Ceiling	Yards of Border	Total Cost Room Complete
8 x 10 ft.	8'	1	1	8	3	13	<b>4.37</b>
10 x 12 ft.	8'	1	1	9	4	16	<b>5.21</b>
10 x 14 ft.	8'	2	2	9	4	17	<b>5.31</b>
12 x 12 ft.	8'	2	2	9	5	17	<b>5.56</b>
12 x 14 ft.	8'	2	2	10	5	20	<b>6.15</b>
12 x 16 ft.	9'	2	2	13	6	21	<b>7.37</b>
14 x 16 ft.	9'	2	2	14	7	22	<b>8.01</b>
14 x 18 ft.	9'	2	2	15	8	24	<b>8.75</b>

**T**HOUGH heavily embossed, this good quality paper retains its leathery toughness. This of course implies ease in handling for hanging and durability. The unusual design will appeal to those in search of something that reflects the tropics or similar atmosphere. An 8-inch border in band style accompanies the sidewall, suggesting the plaster moulding as the dividing line between the scenic designs.

**Description and Prices Above Are For Reverse Side of This Sheet—Not Design Shown Opposite**





An Artistic Design  
that Would be Well  
Chosen for

LIVING-ROOM,  
PARLOR, HALL  
or LIBRARY

OUR  
WALLPAPER  
IS PUT UP IN  
DOUBLE ROLLS  
TO AVOID  
WASTE

SIDEWALL

65-453

Per  
Single  
Roll

25<sup>c</sup>

CEILING

65-553

Per Single  
Roll

22<sup>c</sup>

BORDER

65-653

7½ ins. wide  
Per Yard

10<sup>c</sup>

## LIQUID WOOD FILLER

Quart

65c

½-Gallon

1.15

Gallon

2.20

665-428 Diamond ♦ Liquid Wood Filler takes the place of SheLac, as an economical filler for pine, maple, birch and all close-grained woods. It makes a splendid foundation for all kinds of varnish or wax finishes.

UNUSUALLY good is the quality of this heavy embossed paper that in its delicate tints and graceful but unobtrusive design, expresses such good taste.

On the side walls gilt is judiciously used to add a note of richness, and it also appears on the 7½-inch cut-out

border that carries out the foliage and scenic pattern in green, blue, rose and brown tones. This border will prove an artistic, colorful finish to a wall treatment that will surely please you.

Description and Prices Above Are For Reverse Side of This Sheet—Not Design Shown Opposite



A Bright, Cheery  
Wall Treatment  
for

**DINING-ROOM,  
HALL, DEN or  
LIVING-ROOM**

**OUR  
WALLPAPER  
IS PUT UP IN  
DOUBLE ROLLS  
TO AVOID  
WASTE**

**CEILING**  
65-553.  
Per Single  
Roll

**22<sup>c</sup>**

**SIDEWALL**

65-456.  
Per  
Single  
Roll

**25<sup>c</sup>**

**BORDER**  
65-656.  
6 $\frac{3}{4}$  inches Wide  
Per Yard

**10<sup>c</sup>**

This Chart Tells You at a Glance How Much  
Wallpaper You Need and What it will Cost

Size of Room	Height of Room	No. of Doors	No. of Windows	Single Pells Sidewall	Single Rolls Ceiling	Yards of Border.	Total Cost Room Complete
8 x 10 ft.	8'	1	1	8	3	13	<b>3.96</b>
10 x 12 ft.	8'	1	1	9	4	16	<b>4.73</b>
10 x 14 ft.	8'	2	2	9	4	17	<b>4.83</b>
12 x 12 ft.	8'	2	2	9	5	17	<b>5.05</b>
12 x 14 ft.	8'	2	2	10	5	20	<b>5.60</b>
12 x 16 ft.	9'	2	2	13	6	21	<b>6.67</b>
14 x 16 ft.	9'	2	2	14	7	22	<b>7.24</b>
14 x 18 ft.	9'	2	2	15	8	24	<b>7.91</b>

**T**HE beautiful coloring of this rich embossed paper would be difficult to eclipse. Autumnal tints with gilt and blue in contrast, effect a delightful whole. Plain blue velour hangings would effect correct harmony with the sidewall. So cleverly arranged in color and design, the  $\frac{3}{4}$ -inch cut-out border is absorbed into the sidewall almost without possibility of detection. This feature is most necessary in tapestry effects.

Description and Prices Above Are For Reverse Side of This Sheet - Not Design Shown Opposite



Oatmeal Paper  
For the Decoration of  
**LIVING-ROOM,**  
**HALL** or  
**DINING-ROOM**

**OATMEAL  
PAPERS ARE PUT  
UP IN THREE-  
ROLL LENGTHS  
TO THE PIECE**

**SIDEWALL**

65-465.  
Per  
Single  
Roll  
of 5 Yds. **23<sup>c</sup>**  
30 Inches Wide

**CEILING**

65-553.

Per Single  
Roll

**22<sup>c</sup>**

**BORDER**

65-665.

8½ Ins. wide  
Per Yard

**10<sup>c</sup>**

**This Chart Tells You at a Glance How Much  
Wallpaper You Need and What it Will Cost**

Size of Room	Height of Room	No. of Doors	No. of Windows	Single Rolls Sidewall	Single Rolls Ceiling	Yards of Border	Total Cost Room Complete
8 x 10 ft.	8'	1	1	8	3	13	<b>3.80</b>
10 x 12 ft.	8'	1	1	9	4	16	<b>4.55</b>
10 x 14 ft.	8'	2	2	9	4	17	<b>4.65</b>
12 x 12 ft.	8'	2	2	9	5	17	<b>4.87</b>
12 x 14 ft.	8'	2	2	10	5	20	<b>5.40</b>
12 x 16 ft.	9'	2	2	13	6	21	<b>6.41</b>
14 x 16 ft.	9'	2	2	14	7	22	<b>6.96</b>
14 x 18 ft.	9'	2	2	15	8	24	<b>7.61</b>

It is not surprising that this type of paper is so much used, for it is suitable for stores and clubrooms, as well as homes, and if a piece does become soiled or worn a new strip is easily applied.

Very rich-looking is the 8½-inch cut-out border

Description and Prices Above Are For Reverse Side of This Sheet—Not Design Shown Opposite



# OATMEAL PAPER

Suitable for Living-Room, Hall  
or Dining-Room

**W**E are giving our customers a good choice of Oatmeal papers. We think it well worth while—Oatmeal papers are so serviceable.

It is not surprising that this type of paper is so popular and so much used, for it is suitable for stores and clubrooms, as well as homes, and if a piece does become soiled or worn a new strip is easily applied.

The 3/4-inch cut-out border that accompanies Oatmeal papers is very rich-looking and harmonizes well, in each instance, with the dominating tone of sidewall.

Oatmeal Papers are Put up in Three-Roll  
Lengths to the Piece

65-467.  
**SIDEWALL**  
Single Roll of  
5 Yards  
30 ins. wide

**23<sup>c</sup>**

65-553.  
**CEILING**  
To Match.  
Single Roll

**22<sup>c</sup>**

65-667.  
**Cut-Out  
BORDER**  
8 1/2 ins. wide  
Per Yard

**10<sup>c</sup>**

## OIL-COATED BURLAP

65-973 A buff-colored burlap, ready to finish in any color to suit the room.

36 ins. wide  
Per yard,

**35c**

54 ins. wide  
Per yard,

**53c**

72 ins. wide,  
Per yard,

**70c**

## DYED WALL BURLAP

65-972 Our wall burlap is firmly woven and is suitable for kitchen, bathroom, hall, dining-room or den.

To get years of wall decoration at minimum cost for the home, office, club room, tea room, store, school or public buildings, use wall burlap.

36 inches wide,  
Per yard

**60c**

State Color Desired When Ordering  
**BLUE RED BROWN GREEN**





# OATMEAL PAPER

Suitable for Living-Room, Hall  
or Dining-Room

**W**E are giving our customers a good choice of Oatmeal papers. We think it well worth while—Oatmeal papers are so serviceable.

It is not surprising that this type of paper is so popular and so much used, for it is suitable for stores and clubrooms, as well as homes, and if a piece does become soiled or worn a new strip is easily applied.

The 8½-inch cut-out border that accompanies Oatmeal papers is very rich-looking and harmonizes well, in each instance, with the dominating tone of sidewall.

Oatmeal Papers are Put up in Three-Roll  
Lengths to the Piece

65-469.  
**SIDEWALL**  
Single Roll of  
5 Yards  
30 ins. wide

**23<sup>c</sup>**

65-553.  
**CEILING**  
To Match.  
Single Roll

**22<sup>c</sup>**

65-669.  
**Cut-Out  
BORDER**  
8½ ins. wide  
Per Yard

**10<sup>c</sup>**

## SANITILE

### Cloth Base Wall Covering

Wall treatments for bathroom, pantry or kitchen should only be chosen after mature consideration of their merits as to sanitation.

Sanitile is hygienic. Having a glazed finish in oil colors on a cloth foundation, it does not absorb dirt, and whatever particles of dirt or grease adhere to its surface may be quickly removed with a damp cloth, without damage to its coloring or fabric.

Apply with Stickfast Paste.

#### Mottled Tile Design

65-707. Blue } 45 ins. wide.  
65-708. Green } Per yard... **55c**

#### Plain Square Tile Design

65-705. Blue } 45 ins. wide.  
65-706. Green } Per yard... **55c**

#### Floral Effect in Tile Design

65-703. Blue } 45 ins. wide.  
65-704. Green } Per yard... **55c**

#### Spanish Leather Effects, Dull Finish

65-700. Brown } Dull finish, 45  
65-701. Blue } ins. wide. Yd. **60c**  
65-702. Green }



# OATMEAL PAPER

Suitable for Living-Room, Hall  
or Dining-Room

**W**E are giving our customers a good choice of Oatmeal papers. We think it well worth while—Oatmeal papers are so serviceable.

It is not surprising that this type of paper is so popular and so much used, for it is suitable for stores and clubrooms, as well as homes, and if a piece does become soiled or worn a new strip is easily applied.

The 3/8-inch cut-out border that accompanies Oatmeal papers is very rich-looking and harmonizes well, in each instance, with the dominating tone of sidewall.

**Oatmeal Papers are Put up in Three-Roll  
Lengths to the Piece**

65-466.  
**SIDEWALL**  
Single Roll of  
5 Yards  
30 ins. wide

**23<sup>c</sup>**

65-553.  
**CEILING**  
To Match.  
Single Roll

**22<sup>c</sup>**

65-666.  
**Cut-Out  
BORDER**  
8 1/2 ins. wide  
Per Yard

**10<sup>c</sup>**

## FIBRE VENEER

**Reproduces the Hardwood  
Grain**

65-550. Light Oak Finish.  
65-551. Dark Oak Finish.  
65-552. Walnut Finish.

Per roll of 5 yards,  
36 ins. wide,

**49c**

When one knows just how this true hardwood grain is obtained and reproduced on sturdy, tough paper, it is easy to understand why Fibre Veneer, when correctly applied, is often mistaken for the real hardwood.

It is the actual grain of a piece of hardwood, photographed and cut into rollers for reproduction. Sidewalls, ceilings and floor borders of rooms in the home, store, club or restaurant can be decorated at a fraction of the cost of hardwood, still having the same effect.



# CEILING PAPER

Choice of White or  
Cream. Adaptable  
to any Sidewall  
Treatment.

**OUR  
WALLPAPER  
IS PUT UP IN  
DOUBLE ROLLS  
TO AVOID  
WASTE**

**WHITE**

65-563.

Per  
Single  
Roll

**12<sup>c</sup>**

**CREAM**

65-564.

Per Single Roll

**12<sup>c</sup>**

## ANCHOR PICTURE HOOKS

Medium Size  
14 Hooks  
Per Box **15c**

Large Size  
Hooks  
Per Box **15c**

665-398 Once you use these Anchor Picture Hooks, you'll absolutely discard the old-fashioned method of hanging your pictures by wire. Two of these hooks are used for each picture—one at each side—and they hold the picture perfectly straight. Anchor hooks are firm—there's no possibility of the picture becoming crooked.



### HOW TO MEASURE YOUR CEILING

Multiply the length of the room by the width, and divide the total by 35. Your answer will be the number of single rolls required.

Where a drop-ceiling is preferred add two single rolls for the average-sized room.



Description and Prices Above Are For Reverse Side of This Sheet—Not Design Shown Opposite



# CEILING PAPER

Embossed White  
only. Adaptable  
to any Sidewall  
Treatment.

OUR  
WALLPAPER  
IS PUT UP IN  
DOUBLE ROLLS  
TO AVOID  
WASTE

WHITE

65-525

Per  
Single  
Roll

22<sup>c</sup>

## ANCHOR PICTURE HOOKS

Medium Size  
**14** Hooks  
Per Box **15c**

Large Size  
**10** Hooks  
Per Box **15c**

665-398 Once you use these Anchor Picture Hooks, you'll absolutely discard the old-fashioned method of hanging your pictures by wire. Two of these hooks are used for each picture—one at each side—and they hold the picture perfectly straight. Anchor hooks are firm—there's no possibility of the picture becoming crooked.



### HOW TO MEASURE YOUR CEILING

Multiply the length of the room by the width, and divide the total by 35. Your answer will be the number of single rolls required.

Where a drop-ceiling is preferred add two single rolls for the average-sized room.

Description and Prices Above Are For Reverse Side of This Sheet—Not Design Shown Opposite





This Sanitary  
Wall Hanging is  
Suitable for  
**KITCHEN or  
BATHROOM**

**OUR  
WALLPAPER  
IS PUT UP IN  
DOUBLE ROLLS  
TO AVOID  
WASTE**

**SIDEWALL**

65-485.  
Per  
Single  
Roll  
18 ins.  
wide

**29<sup>c</sup>**

**CEILING**  
65-585.  
Per Single  
Roll  
18 Inches wide

**29<sup>c</sup>**

**BORDER**  
65-685.  
6 ins. wide  
Per Yard

**5<sup>c</sup>**

**This Chart Tells You at a Glance How Much  
Wallpaper You Need and What it will Cost**

Size of Room	Height of Room	No. of Doors	No. of Windows	Single Rolls Sidewall	Single Rolls Ceiling	Yards of Border	Total Cost Room Complete
8 x 10 ft.	8'	1	1	8	3	13	<b>3.84</b>
10 x 12 ft.	8'	1	1	11	4	16	<b>5.25</b>
10 x 14 ft.	8'	2	2	10	5	17	<b>5.20</b>
12 x 12 ft.	8'	2	2	10	5	17	<b>5.20</b>
12 x 14 ft.	8'	2	2	11	6	20	<b>5.93</b>
12 x 16 ft.	9'	2	2	14	7	21	<b>7.14</b>
14 x 16 ft.	9'	2	2	16	8	22	<b>8.06</b>
14 x 18 ft.	9'	2	2	17	9	24	<b>8.74</b>

**A**S it happily combines practicability with a pleasing appearance, varnished paper is often the choice of particular housewives. The little scenic panels give variety to the side walls, while a 6-inch border showing a more extensive view of the landscape tops this serviceable decoration.

The fact that it may be refreshed and made spotless by wiping off with a damp cloth is yet another of its virtues.

**Description and Prices Above Are For Reverse Side of This Sheet—Not Design Shown Opposite**



This Glossy,  
 Tile-like Paper  
 is Designed for  
**BATHROOM,**  
**KITCHEN or**  
**PANTRY**

**OUR  
 WALLPAPER  
 IS PUT UP IN  
 DOUBLE ROLLS  
 TO AVOID  
 WASTE**

**SIDEWALL**  
 65-486  
 Per  
 Single  
 Roll  
 18 inches  
 wide **29<sup>c</sup>**

**CEILING**  
 65-585.  
 Per Single  
 Roll  
 18 inches wide **29<sup>c</sup>**

**BORDER**  
 65-686.  
 6ins. wide,  
 Per Yard **5<sup>c</sup>**

This Design Can Also Be Obtained in  
**PLAIN BLUE**  
**PLAIN BROWN**  
 or **PLAIN GREEN**

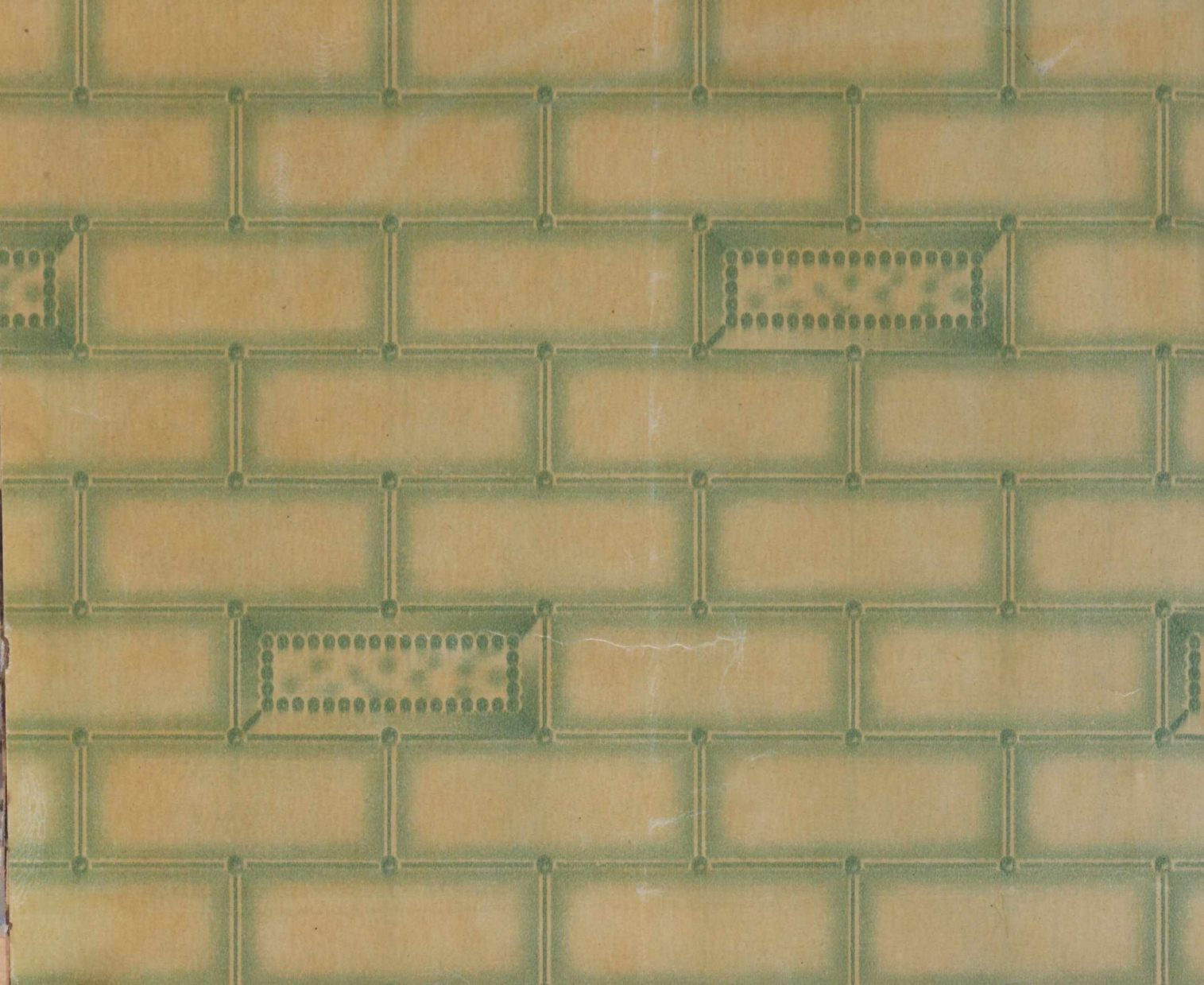
Note—When ordering state color and number.

65-488. Sidewall, color Brown. Per single roll..... **29c**  
 65-688. Border to match. Per yard..... **5c**  
 65-489. Sidewall, color Blue. Per single roll..... **29c**  
 65-689. Border to match. Per yard..... **5c**  
 65-490. Sidewall, color Green. Per single roll..... **29c**  
 65-690. Border to match. Per yard..... **5c**

**B**y simply wiping off with a damp cloth this durable varnished paper may be restored to its original freshness. This is no small consideration these days when sanitary surroundings are considered of first importance.

The 6-inch border makes an interesting accompaniment for it shows an effective scenic design in colors to correspond with side walls.

Description and Prices Above Are For Reverse Side of This Sheet—Not Design Shown Opposite



Suggests  
Cleanliness in  
**BATHROOM,**  
**KITCHEN** or  
**PANTRY**

**This Design Can Also Be  
Supplied in Colors  
BLUE or BROWN**

Order by number and color as follows:—

- 65-491. Sidewall, color Brown. Per single roll..... **29c**  
 65-585. Ceiling. Per single roll..... **29c**  
 65-691. Border to match. Per yard..... **5c**  
 65-492. Sidewall, color Blue. Per single roll..... **29c**  
 65-585. Ceiling. Per single roll..... **29c**  
 65-692. Border to match. Per yard..... **5c**

**OUR  
WALLPAPER  
IS PUT UP IN  
DOUBLE ROLLS  
TO AVOID  
WASTE**

**SIDEWALL**  
65-487  
Per  
Single  
Roll  
18 inches  
wide **29c**

**CEILING**  
65-585  
Per Single  
Roll  
18 inches wide **29c**

**BORDER**  
65-687  
6 inches wide  
Per Yard **5c**

**T**HAT immaculate appearance so much sought after for bathroom or kitchen will be imparted in a large measure by this serviceable varnished paper. Its soft green coloring is soothing to the eyes and the tile pattern very suitable for this type of paper.

The 6-inch border in a more elaborate tile pattern shows picturesque scenes at regular intervals. In conclusion it will be welcome news to learn that if a dampened cloth were applied to the surface of this paper it will always present a spotless appearance.

Description and Prices Above Are For Reverse Side of This Sheet—Not Design Shown Opposite



This Durable Paper  
Is for the  
Decoration of a  
**DINING-ROOM,  
KITCHEN or  
HALL**

**OUR  
WALLPAPER  
IS PUT UP IN  
DOUBLE ROLLS  
TO AVOID  
WASTE**

**SIDEWALL**

65-494

Per  
Single  
Roll

**10<sup>c</sup>**

**CEILING**

65-504

Per Single  
Roll

**10<sup>c</sup>**

**BORDER**

65-694

7½ Ins. wide  
Per Yard

**4<sup>c</sup>**

**DECORATOR'S  
COTTON**

**36** inches  
wide

**Per Yard 20c**

65-499 If you have any rough, uneven walls or ceilings that you cannot satisfactorily decorate, such as wooden wainscoting, partitions, etc., cover them with decorator's cotton. A good job of painting or paper-hanging can then be done that will give long service. For plaster walls, size and paste the walls before applying cotton. To properly fill the crevices in wainscoting tack cotton down at corners and size it that it may draw tight over the surface.

**C**ONSIDER our very special offer of this serviceable paper if you would save expense on your wall decorations.

Finger marks, dust blemishes or fading will be found hardly discernible by reason of its deep coloring, and the price is truly remarkable.

The 7½-inch border is of the band style and scenic design which completes the decorative scheme.

Description and Prices Above Are For Reverse Side of This Sheet—Not Design Shown Opposite





This Design  
May Be Used for  
**PARLOR or  
BEDROOM**

## INTERIOR VARNISH

Pint	Quart	½-Gallon	Gallon
<b>50c</b>	<b>85c</b>	<b>1.45</b>	<b>2.50</b>

665-424 While "EATON Interior Varnish" is not suitable for floors or outside surfaces it is specially prepared for interior woodwork, on hard or soft wood, old or newly painted, grained or stained wood, also furniture. The price you will see is very low. It cannot be excelled by comparison. One gallon covers 300 square feet, two coats.

**OUR  
WALLPAPER  
IS PUT UP IN  
DOUBLE ROLLS  
TO AVOID  
WASTE**

**SIDEWALL**

65-495

Per  
Single  
Roll

**10<sup>c</sup>**

**CEILING**

65-595

Per Single  
Roll

**10<sup>c</sup>**

**BORDER**

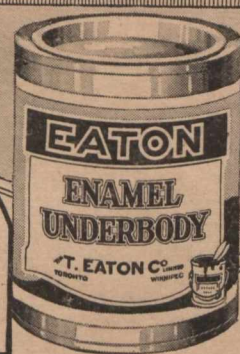
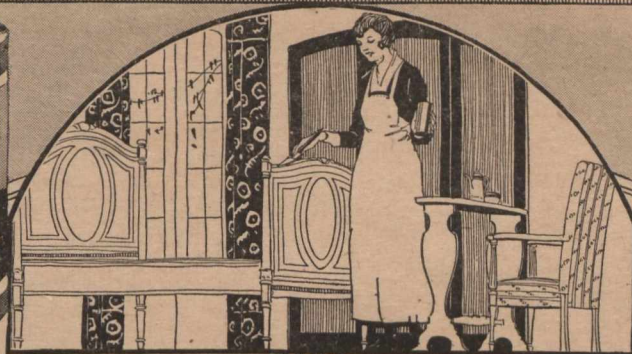
65-695

1½ ins. wide  
Per Yard

**4<sup>c</sup>**

**Y**OUR attention is drawn to the very low price quoted for this very pretty paper. Even the shrewd judge of wallpaper value will be forced to admit being wide of the mark in estimating its price when told it is only 10c per roll. In harmony with the sidewall the 7½-inch band border follows the scenic theme of the decoration.

Description and Prices Above Are For Reverse Side of This Sheet—Not Design Shown Opposite



## Gloss Enamel

½ Pint    Pint    Quart    ½ Gal.    Gallon

**50c 80c 1.35 2.40 4.65**

665-325. White

665-326. Ivory

665-327. Pink

665-328. Azure Blue

665-330. French Grey

665-331. Emerald

665-332. Pea Green

665-333. Black

EATON Gloss Enamel is a well-known treatment for woodwork and doors, but that it may be more fully appreciated for its worth, the following further services are suggested:—Furniture scratched and marred can be satisfactorily covered by this full-bodied enamel. By carefully selecting your color, harmony may be obtained between new furniture and woodwork. Cupboards, cabinets, baby carriages, toys, plumbing, etc., may be all given that tile-like gloss with a coat or two of EATON'S Gloss Enamel.

## Enamel Underbody

Quart    ½ Gallon    Gallon

**1.30 2.50 4.75**

**665-400** To get the best results from enamel work, a good underbody should be used before the enamel application. By enamelling over old painted surfaces, or even over ordinary house paint without a flat priming coat, you run the risk of your colors being affected by the oils contained in the paint—White deepens to Cream, for instance. EATON Underbody prevents this, as the oil used in its manufacture will not discolor. As a flat finish for interior walls, ceilings, woodwork, etc., it is often used with good effect.

# Floor . . . Enamel

Made Specially  
To Be Walked  
Upon



Quart

1.00

½-Gallon

1.90

Gallon

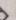
3.50

COLORS:

665-350. Pearl Grey  
665-351. Light Slate  
665-352. Deep Yellow

665-353. Green  
665-354. Dark Slate  
665-355. Golden Brown

665-360. Light Yellow  
665-361. Wine

Verandah floors and steps, kitchen floors and cellar steps are subjected to a more severe test than any other painted surface. You cannot afford therefore to risk the purchase of an inferior or unknown paint for this work. Diamond  Floor Enamel will suit your purpose, for it is tough and durable. Its elasticity allows for the contraction and expansion caused by the sun and frost, also the shock of heavy heels or the movement of furniture.

THE T. EATON CO. LIMITED  
TORONTO AND WINNIPEG  
MONCTON MAIL ORDER BRANCH