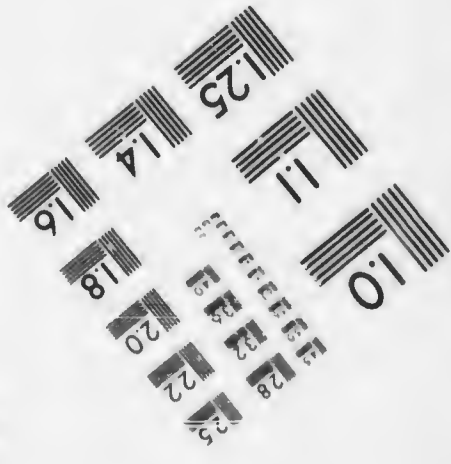
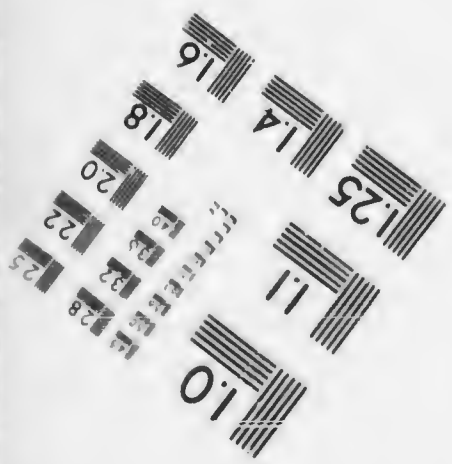
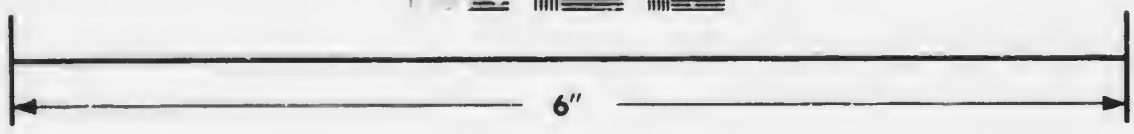
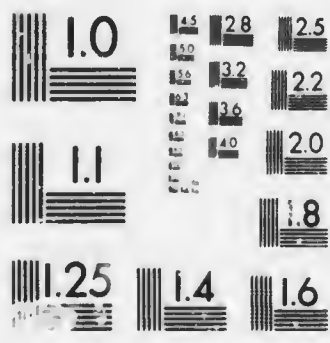


**IMAGE EVALUATION
TEST TARGET (MT-3)**



**Photographic
Sciences
Corporation**

23 WEST MAIN STREET
WEBSTER, N.Y. 14580
(716) 872-4503

**CIHM/ICMH
Microfiche
Series.**

**CIHM/ICMH
Collection de
microfiches.**



Canadian Institute for Historical Microreproductions / Institut canadien de microreproductions historiques

© 1987

Technical and Bibliographic Notes/Notes techniques et bibliographiques

The Institute has attempted to obtain the best original copy available for filming. Features of this copy which may be bibliographically unique, which may alter any of the images in the reproduction, or which may significantly change the usual method of filming, are checked below.

L'Institut a microfilmé le meilleur exemplaire qu'il lui a été possible de se procurer. Les détails de cet exemplaire qui sont peut-être uniques du point de vue bibliographique, qui peuvent modifier une image reproduite, ou qui peuvent exiger une modification dans la méthode normale de filmage sont indiqués ci-dessous.

- Coloured covers/
Couverture de couleur
- Covers damaged/
Couverture endommagée
- Covers restored and/or laminated/
Couverture restaurée et/ou pelliculée
- Cover title missing/
Le titre de couverture manque
- Coloured maps/
Cartes géographiques en couleur
- Coloured ink (i.e. other than blue or black)/
Encre de couleur (i.e. autre que bleue ou noire)
- Coloured plates and/or illustrations/
Planches et/ou illustrations en couleur
- Bound with other material/
Relié avec d'autres documents
- Tight binding may cause shadows or distortion along interior margin/
La reliure serrée peut causer de l'ombre ou de la distorsion le long de la marge intérieure
- Blank leaves added during restoration may appear within the text. Whenever possible, these have been omitted from filming/
Il se peut que certaines pages blanches ajoutées lors d'une restauration apparaissent dans le texte, mais, lorsque cela était possible, ces pages n'ont pas été filmées.
- Additional comments: /
Commentaires supplémentaires: Docket title page is bound in as last page in book but filmed as first page on fiche.

- Coloured pages/
Pages de couleur
- Pages damaged/
Pages endommagées
- Pages restored and/or laminated/
Pages restaurées et/ou pelliculées
- Pages discoloured, stained or foxed/
Pages décolorées, tachetées ou piquées
- Pages detached/
Pages détachées
- Showthrough/
Transparence
- Quality of print varies/
Qualité inégale de l'impression
- Includes supplementary material/
Comprend du matériel supplémentaire
- Only edition available/
Seule édition disponible
- Pages wholly or partially obscured by errata slips, tissues, etc., have been refilmed to ensure the best possible image/
Les pages totalement ou partiellement obscurcies par un feuillet d'errata, une pelure, etc., ont été filmées à nouveau de façon à obtenir la meilleure image possible.

This item is filmed at the reduction ratio checked below/
Ce document est filmé au taux de réduction indiqué ci-dessous.

10X	14X	18X	22X	26X	30X
				/	
12X	16X	20X	24X	28X	32X

The copy filmed here has been reproduced thanks to the generosity of:

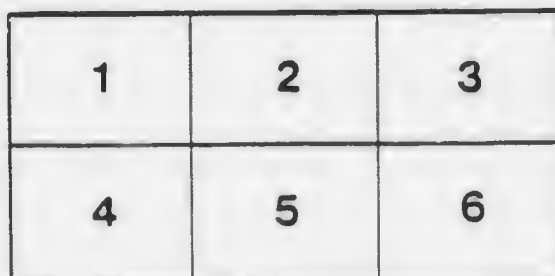
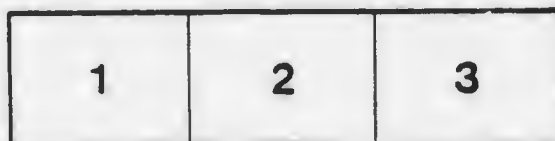
Memorial University of St. John's

The images appearing here are the best quality possible considering the condition and legibility of the original copy and in keeping with the filming contract specifications.

Original copies in printed paper covers are filmed beginning with the front cover and ending on the last page with a printed or illustrated impression, or the back cover when appropriate. All other original copies are filmed beginning on the first page with a printed or illustrated impression, and ending on the last page with a printed or illustrated impression.

The last recorded frame on each microfiche shall contain the symbol \rightarrow (meaning "CONTINUED"), or the symbol ∇ (meaning "END"), whichever applies.

Maps, plates, charts, etc., may be filmed at different reduction ratios. Those too large to be entirely included in one exposure are filmed beginning in the upper left hand corner, left to right and top to bottom, as many frames as required. The following diagram illustrates the method:



L'exemplaire filmé fut reproduit grâce à la générosité de:

Memorial University of St. John's

Les images suivantes ont été reproduites avec le plus grand soin, compte tenu de la condition et de la netteté de l'exemplaire filmé, et en conformité avec les conditions du contrat de filmage.

Les exemplaires originaux dont la couverture en papier est imprimée sont filmés en commençant par la première page et en terminant soit par la dernière page qui comporte une empreinte d'impression ou d'illustration, soit par le second plat, selon le cas. Tous les autres exemplaires originaux sont filmés en commençant par la première page qui comporte une empreinte d'impression ou d'illustration et en terminant par la dernière page qui comporte une telle empreinte.

Un des symboles suivants apparaîtra sur la dernière image de chaque microfiche, selon le cas: le symbole \rightarrow signifie "A SUIVRE", le symbole ∇ signifie "FIN".

Les cartes, planches, tableaux, etc., peuvent être filmés à des taux de réduction différents. Lorsque le document est trop grand pour être reproduit en un seul cliché, il est filmé à partir de l'angle supérieur gauche, de gauche à droite, et de haut en bas, en prenant le nombre d'images nécessaire. Les diagrammes suivants illustrent la méthode.



REPORT

OF Notre Dame Mining Company, to
the 31st December, 1872.

[Laid on the Table by Hon. Colonial Secretary]
24th February, 1873.]

[Ordered by the Honorable House of Assembly
to be printed.]

NFLD

HD
9539
C6
N6
RARE

NFLD

HD
9539
C6
N6
RARE

Report
Of Notre Dame Mining Company to
the 31st December, 1872.

ST. JOHN'S, NEWFOUNDLAND.

8th February, 1873.

The Directors of the Notre Dame Mining Company submit the following Report of the present condition of the Company.

The Company was formed in 1869, and registered in accordance with the Act for the formation of Incorporations in this Island; its object being to raise Copper and other Ores in Newfoundland, and its Capital being £15,000,—of which £12,936 have been paid, £564 are now remaining unpaid upon calls past due, and £1,500 have as yet not been called for.

The following is the List of Persons who have been Shareholders, and of those who continue to hold Shares, as also of those whose payments are in arrear, viz.:

Shareholders.	Shares.	Paid.	Arrears.	Shareholders.	Shares.	Paid.	Arrears.
		£	£			£	£
Bowring, Charles ..	500	4500		Forward	754	6578	208
Bowring, Wm. B. ...	20	180		Koozen, John H. ...	120	1080	
Boyd, Thomas	12	84	24	McDougall, Alex ..	2	18	
Clary, Philip, trustee	30	210	60	McDougall, John ..	8	72	
Evans, Edward ...	20	180		Parnell, Wm. J. R.	5	45	
Gill, William	20	180		Pinsent, Charles S.	26	234	
Gill, Henry G. H.	20	180		Pinsent, Thomas W.	2	18	
Gleeson, James ...	2	18		Rennie, David S. ...	40	360	
Green, Randal	2	18		Rennie, Fred W. ...	5	45	
Harvey, Richard ..	20	180		Rouse, William. O.	2	18	
Hayward, A. O. ...	5	45		Shortall, Richard ..	3	27	
Hutchings, Philip..	12	84	24	Smith, Edward ...	10	90	
Jackman, William.	5	45		Walters, T. H. trus.	12	108	
Jarvis, Edward L.	5	45		Warren, John H. ...	416	3388	356
Knight, James R. .	5	45		Warren, J. H. trustee	5	45	
Knight, Robert G.	50	350	100	Warren, Wm. M. H.	73	657	
Knight, Thomas ..	26	234		White, Laurence ..	3	27	
				Withers, John W. .	14	126	
Forward	754	6578	208		1500	12936	564

The Mining operations at Burton's Pond were suspended during the past year; and, in accordance with the Resolutions passed at the last Annual Meeting of the Shareholders, the Ore raised at the Mine was shipped to England and sold, and a careful survey of the Mine and the property of the Company was made by Hugh R. Fletcher, Esq., Mining Engineer,—a gentleman whose scientific attainments and practical experience as a Geologist have received very favorable recognition by the head of the Geological Department in Canada, and by the Government Geologist of Newfoundland.

Mr. Fletcher's Report to the Directors is annexed hereto, copies of which have also been sent to the Shareholders individually.

The following is a General Abstract of the Company's Financial Affairs, made to 31st December, 1872, viz.:

Dr.	Cr.
To Capital Stock, £15,000 of which amount there has been paid, — in- cluding forfeited Shares	By purchase money of Burton's Pond Mine
£12,936 0 0	£6,000 0 0
	" Amount expend- ed in erection of Buildings
	850 0 0
	" Estimated value of supplies on hand
	150 0 0
	" Cash
	103 4 9
	" Balance of expen- diture in wages of Officers, Miners, Tools and Inci- dentals
	5,832 15 3
<u>£12,936 0 0</u>	<u>£ 12,936 0 0</u>

The Directors, while they regret that so large an amount as one-third of the Company's capital should have been expended unprofitably in searching for the Ore which the Geological features of the locality indicate, and this too after having paid a still greater sum for the purchase of the property, can now only submit to the Shareholders the alternative of an increase of Capital for further operations under more scientific direction, or of a transfer or sale of the property, and an equitable distribution of the proceeds of such sale.

CHAS. BOWRING,

President.

JOHN H. WARREN,
THOMAS KNIGHT,
RICHARD HARVEY,
C. S. PINSENT,

} Directors.

I, EDWARD L. JARVIS, Secretary and Treasurer of the Notre Dame Mining Company, do swear that the foregoing Statement and Report of the Directors of the said Company are true to the best of my knowledge and belief.

E. L. JARVIS.

Sworn to before me at St. John's, }
Newfoundland, this 10th day of }
February, A. D., 1873.

ROBT. R. W. LILLY, J.P.

TO THE PRESIDENT AND DIRECTORS OF THE NOTRE
DAME MINING COMPANY:

GENTLEMEN,—

In accordance with your instructions I have visited and inspected your Mine and property at Burton's Pond, and beg to report as follows:—

The property of the Notre Dame Mining Company is situated at Burton's Pond, Green Bay, in the Bay of Notre Dame, and comprises an area of six hundred and forty acres. The prevailing rock of the district is diorite, the eruption of which seems to have been the force which produced the metamorphism of the stratified rocks within its influence, together with the numerous dislocations and distortions manifested by them where they appear at the surface. These are, in a great measure, covered over by the diorite, and show on the surface only where faults or fractures occur in that rock. The subsequent action of the red and grey syenite, which form extensive ridges on the north side of the property, does not, in this locality, extend to the mineral bearing bands of the stratified rocks.

The serpentine, with which the ores of copper in this Island, seem uniformly to be associated, is exceedingly well developed, and extends through the entire length of the property, from east to west. Steatite and chlorite, also mineral bearing rocks, show in large masses and fragments, and no doubt, underlie the serpentine here, in the same order in which they occur in other localities.

The mineral band is nearly two hundred feet wide, and is composed of a dark chloritic slate, steatite and diorite. The diorite is

intrusive, and brings to the surface dislocated portions of the steatite and chlorite.

The ore contained in these rocks is a yellow sulphuret of copper, and is deposited in the form of concretionary layers and bunches; usually following or conforming to, the lines of stratification, but also occurring in veins and seams, forming various angles with the strike of the strata.

In the south drift the copper pyrites forms a vein of from 4 to 8 inches in thickness. In the north drift it occurs in minute seams, more or less spread over the entire face of the drift, and in small nodular masses. In both drifts the copper has frequently been cut off by intrusions of diorite, and this may be expected to continue until the workings are carried beyond the immediate influence of the diorite. When this is done, more regular deposits of ore may reasonably be expected.

The cross section shown on the map is made up from various points of the property, beginning at "Powder-house hill," taking the stratified rocks in their order of superposition, from south to north, and the erupted rocks as they occur on the surface.

Nos. 1, 9, 10 ridges are diorite, more or less affected in color and texture by the rock through which it has been erupted, and with which it is often interfused. The purple diorite, where in contact with the red syenite, is slightly porphyritic, the crystals being white felspar. The surface of diorite on the location, taking its width in three places, is over three thousand feet.

No. 2.—A bed of amorphous green slate, intersected and reticulated by thin bands and dykes of diorite, 200 feet thick, showing in places stains of green carbonate of copper.

No. 3.—Chloritic slate, steatite and diorite, 180 feet wide. This is the mineral band, and carries yellow sulphuret of copper in the chlorite and steatite, in seams, veins, and small nodular concretions.

No. 4.—A thin outcrop of steatite, 8 feet wide, considerably altered. Fragments of this rock are found in the present workings of the mine; and in the north drift there are indications of its having come into place. It contains copper, and by analysis yields traces of nickel, which metal will, most probably, be found in connection with it.

No. 5.—A metamorphosed magnesian rock interfused with diorite, and containing fragments of highly altered serpentine, steatite, and chloritic slate. This will, most probably, be found to be the true copper bearing portion of the formation.

No. 6.—Serpentine. The serpentine shows on the surface, 380 feet north west of the mine, where it is 240 feet wide, and is exposed along the south side of the Pond, to the eastern extremity of the property, where its outcrops make a thickness of eleven hundred feet.

No. 7.—A wall or irregular block of altered chlorite or diorite, 80 feet thick, apparently brought up through the serpentine by the action of the diorite on the south side of it, or that of the grey syenite on the north.

Nos. 8 & 11.—Grey and red syenite. The grey ridge is 300 feet wide. Near its southern edge the rock is porphyritic, the crystals being quartz. The red, east of Birchy Pond, is 600 feet wide, but north of the Pond it covers an area of more than 3,000 feet. Many portions of these syenite ridges are quite destitute of hornblende as a constituent of their composition. Other portions contain it in due proportion to the quartz and felspar.

The strike of the erupted ridges is somewhat irregular, but may be taken as east and west. That of the stratified rocks is north, 60° to 65° east, dipping to the north west at an average angle of 37° .

The mining work done on the property consists of sinking a main shaft, 115 feet east from the main entrance to the south drift, to a depth from the surface of

.....	137 feet.
A winze, 20 feet east from the entrance to the south drift	60 "
South drift, driven on the adit level.....	290 "
" " " " " 10 fm. level.....	274 "
North drift, " " " adit level	178 "
" " " " " 10 fm. level	69 "
A cross cut between the north and south drifts at the 10	
fm. level, 18 feet west of the main shaft	32 "
Three trial cross cuts at the 10 fm. level.....	58 "

Barton's Pond is between five and six feet above the sea level at high water. With a south or south east wind, the tide flows into the pond. In the event of mining being carried on, on the south side and east end of the pond, it might be made available for scowing the ore, &c. The entrance to the pond could be deepened so as to admit a scow, at little cost. The soundings of the pond are as follows, viz:—

In the centre, 150 feet off the western shore	11 fms.
Off the 1st south western point	17½ "
"Diorite point, north side	17 "
"Tronting rock.....	9 "
"Birchy Pond Brook.....	4 "
"Eastern end, 150 feet from the shore	6 "

But the cheapest mode of transit for the ore, &c., would be to construct a tramway along the south side of the pond, with a grade sufficiently steep to admit of the ore cars being sent along it by *nearly* their own force of gravity.

The large brook running into the pond at the east end, where it has a fall of 30 feet, on the Notre Dame property, would form a water power of great value for the purposes of crushing and dressing ore.— During the summer months it affords water enough to drive a 25 feet overshot wheel.

The shipping facilities are good. Vessels may safely lie off the mine and load, in moderate weather, and can always find secure anchorage and shelter from all weathers in Pitman's Bight and Nipper's Harbor, half a mile, and a mile west of the mine.

There are two good dwelling houses, two small cottages, a powder house, blacksmith's shop and a store on the property.

I strongly recommend that the explorations and mining operations be continued, and have great confidence that the mine will ultimately become a paying enterprise.

I have the honor to be, &c., &c.,

HUGH R. FLETCHER,

Miner's Engineer.

St. John's, Nfld., October 24, 1872.





