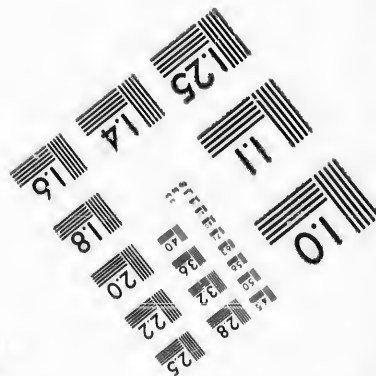
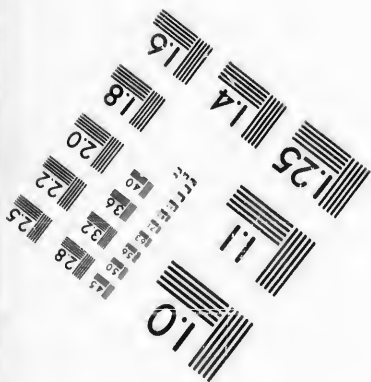
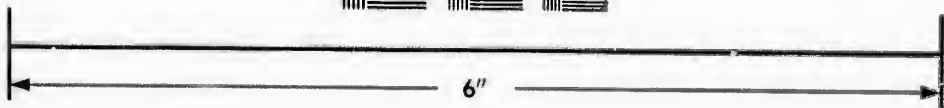
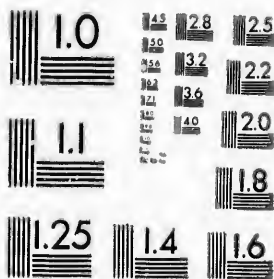


**IMAGE EVALUATION  
TEST TARGET (MT-3)**



**Photographic  
Sciences  
Corporation**

23 WEST MAIN STREET  
WEBSTER, N.Y. 14580  
(716) 872-4503

12  
10  
28  
22  
25  
18  
20

**CIHM/ICMH  
Microfiche  
Series.**

**CIHM/ICMH  
Collection de  
microfiches.**



**Canadian Institute for Historical Microreproductions / Institut canadien de microreproductions historiques**

10  
01

**© 1987**

Technical and Bibliographic Notes/Notes techniques et bibliographiques

The Institute has attempted to obtain the best original copy available for filming. Features of this copy which may be bibliographically unique, which may alter any of the images in the reproduction, or which may significantly change the usual method of filming, are checked below.

L'Institut a microfilmé le meilleur exemplaire qu'il lui a été possible de se procurer. Les détails de cet exemplaire qui sont peut-être uniques du point de vue bibliographique, qui peuvent modifier une image reproduite, ou qui peuvent exiger une modification dans la méthode normale de filmage sont indiqués ci-dessous.

- Coloured covers/  
Couverture de couleur
- Covers damaged/  
Couverture endommagée
- Covers restored and/or laminated/  
Couverture restaurée et/ou pelliculée
- Cover title missing/  
Le titre de couverture manque
- Coloured maps/  
Cartes géographiques en couleur
- Coloured ink (i.e. other than blue or black)/  
Encre de couleur (i.e. autre que bleue ou noire)
- Coloured plates and/or illustrations/  
Planches et/ou illustrations en couleur
- Bound with other material/  
Relié avec d'autres documents
- Tight binding may cause shadows or distortion  
along interior margin/  
La reliure serrée peut causer de l'ombre ou de la  
distorsion le long de la marge intérieure
- Blank leaves added during restoration may  
appear within the text. Whenever possible, these  
have been omitted from filming/  
Il se peut que certaines pages blanches ajoutées  
lors d'une restauration apparaissent dans le texte,  
mais, lorsque cela était possible, ces pages n'ont  
pas été filmées.
- Additional comments:/  
Commentaires supplémentaires:

- Coloured pages/  
Pages de couleur
- Pages damaged/  
Pages endommagées
- Pages restored and/or laminated/  
Pages restaurées et/ou pelliculées
- Pages discoloured, stained or foxed/  
Pages décolorées, tachetées ou piquées
- Pages detached/  
Pages détachées
- Showthrough/  
Transparence
- Quality of print varies/  
Qualité inégale de l'impression
- Includes supplementary material/  
Comprend du matériel supplémentaire
- Only edition available/  
Seule édition disponible
- Pages wholly or partially obscured by errata  
slips, tissues, etc., have been refilmed to  
ensure the best possible image/  
Les pages totalement ou partiellement  
obscurcies par un feuillet d'errata, une pelure,  
etc., ont été filmées à nouveau de façon à  
obtenir la meilleure image possible.

This item is filmed at the reduction ratio checked below/  
Ce document est filmé au taux de réduction indiqué ci-dessous.

10X	14X	18X	22X	26X	30X	
			/			
	12X	16X	20X	24X	28X	32X

The copy filmed here has been reproduced thanks to the generosity of:

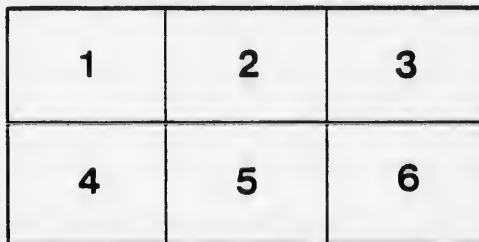
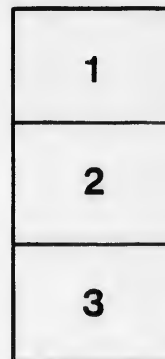
D. B. Weldon Library  
University of Western Ontario  
(Regional History Room)

The images appearing here are the best quality possible considering the condition and legibility of the original copy and in keeping with the filming contract specifications.

Original copies in printed paper covers are filmed beginning with the front cover and ending on the last page with a printed or illustrated impression, or the back cover when appropriate. All other original copies are filmed beginning on the first page with a printed or illustrated impression, and ending on the last page with a printed or illustrated impression.

The last recorded frame on each microfiche shall contain the symbol  $\rightarrow$  (meaning "CONTINUED"), or the symbol  $\nabla$  (meaning "END"), whichever applies.

Maps, plates, charts, etc., may be filmed at different reduction ratios. Those too large to be entirely included in one exposure are filmed beginning in the upper left hand corner, left to right and top to bottom, as many frames as required. The following diagrams illustrate the method:



L'exemplaire filmé fut reproduit grâce à la générosité de:

D. B. Weldon Library  
University of Western Ontario  
(Regional History Room)

Les images suivantes ont été reproduites avec le plus grand soin, compte tenu de la condition et de la netteté de l'exemplaire filmé, et en conformité avec les conditions du contrat de filmage.

Les exemplaires originaux dont la couverture en papier est imprimée sont filmés en commençant par le premier plat et en terminant soit par la dernière page qui comporte une empreinte d'impression ou d'illustration, soit par le second plat, selon le cas. Tous les autres exemplaires originaux sont filmés en commençant par la première page qui comporte une empreinte d'impression ou d'illustration et en terminant par la dernière page qui comporte une telle empreinte.

Un des symboles suivants apparaîtra sur la dernière image de chaque microfiche, selon le cas: le symbole  $\rightarrow$  signifie "A SUIVRE", le symbole  $\nabla$  signifie "FIN".

Les cartes, planches, tableaux, etc., peuvent être filmés à des taux de réduction différents. Lorsque le document est trop grand pour être reproduit en un seul cliché, il est filmé à partir de l'angle supérieur gauche, de gauche à droite, et de haut en bas, en prenant le nombre d'images nécessaire. Les diagrammes suivants illustrent la méthode.

*No 1*  
LIST OF VOTERS

—FOR THE—

TOWNSHIP OF METCALFE

—FOR THE—

YEAR 1889.

*Recd & Filed*  
*July 2/89*  
*Chas Hutchinson*  
*Clk Pease*  
*per Clk*

STRATHROY, ONT.

Printed at THE AGE Printing House, Front Street,  
1889.

# Mu

1. NAPIER
2. KERW
3. STRAT
4. CAIRN
5. WALK
6. GLEN

Comprisi

## PART

AB  
Franchise

Roll No.	
51	Arr
52	Arr
53	Arr
200	Ral
113	Be
139	Be
140	Be
141	Be
142	Be
156	Be
28	Be
70	Bl
71	Bl
133	Bl
89	Br
90	Br
189	Br



# VOTERS' LIST FOR 1889, Municipality of Metcalfe.

## SCHEDULE OF POST OFFICES.

- |                 |                |                 |
|-----------------|----------------|-----------------|
| 1. NAPIER.      | 7. KILMARTIN.  | 13. HEATHER.    |
| 2. KERWOOD.     | 8. OSMAN.      | 14. GLENCOE.    |
| 3. STRATHROY.   | 9. TORONTO.    | 15. PETROLEA.   |
| 4. CAIRNGORM.   | 10. NAPPERTON. | 16. ST. THOMAS. |
| 5. WALKERS.     | 11. OTTAWA.    | 17. ALVINSTON.  |
| 6. GLEN WILLOW. | 12. APPIN.     |                 |

## Polling Sub-Division No. 1,

Comprising the 1st, 2nd, 3rd and 4th Concessions. Polling at School House on Lot 8th, 4th Con.

**PART 1.—Persons entitled to Vote at BOTH Municipal Elections and Elections to the Legislative Assembly.**

ABBREVIATIONS:—F., Owner; L. S., Landholder's Son; M. F., Manhood Franchise; T., Tenant; Oe., Oecupant; H., Householder.

Roll No.	NAME.	LOT.	Concession or Street.	Other Description.	P.O.
51	Armstrong, Wm H.	N pt 19	1	F	3
52	Armstrong, Rich W	N pt 19	1	F	3
53	Armstrong, Wm A.	N pt 19	1	F	3
200	Ballantyre, Albert.	pt gore 16	4	T	4
113	Bennett, Wm	pt gore 17	2	T	3
139	Bennett, James sr	E hf 9 & 10	3	T	1
140	Bennett, James jr	E hf 9 & 10.	3	T	1
141	Bennett, Cornelius	E hf 9 & 10.	3	T	1
142	Bennett, John	E hf 9 & 10.	3	T	1
156	Bennett, Arthur	N gore 16	3	T	4
28	Benstead, Thomas	N pt gore 16	2	T	2
70	Blair James	E hf E hf 6	2	F	2
71	Blair Albert	N hf 6	3	L S	2
133	Blackstock, Samuel	pt S hf 6	3	F	2
89	Brady, Thomas	E hf 11	2	F	2
90	Brady, Bernard	E hf 11	2	L S	2
189	Brady, Joseph	W hf 13	4	F	2

## POLLING SUB-DIVISION No. 1.

Roll No.	NAME.	LOT.	Concession or Street.	Other Description.	P.O.
J190	Brady, John	W hf E hf 13.	4	F	2
110	Branan, Wallace	pt gore 17	2	T	3
J 13	Brigham, James	W hf 4	1	F	2
J 66	Brigham, John W	W hf 5	2	F	2
J 67	Brigham, Timothy R.	W hf 5	2	F	2
J 76	Brogan, Michael	W hf W hf 8	2	F	2
J115	Brown, James	gore 18	2	F	3
128	Brunt, James	W hf E hf 5	3	F	2
129	Brunt, George	W hf E hf 5	3	L S	2
130	Brunt, Joseph	W hf E hf 5	3	L S	2
J166	Buchanan, James	lot 3	4	F	1
167	Buchanan, Wm	E hf 3	3	F	1
36	Callahan, Wm	W hf 10	1	F	2
J 37	Callahan, Edward	W hf 10	1	F	2
J202	Carty, Peter	S pt 11	4	F	1
203	Carty, Dennis	S pt 11	4	F	1
111	Case, James	pt gore 17	2	T	3
J 74	Clark, John	E hf 7	2	F	2
J 75	Clark, James	E hf W hf 8	2	F	2
8	Cook, James	W $\frac{3}{4}$ 3	1	F	2
9	Cook, James B	W $\frac{3}{4}$ 3	1	L S	2
10	Cook, Lycurgus	W $\frac{3}{4}$ 3	1	L S	2
11	Cook, Silas W	W $\frac{3}{4}$ 3	1	L S	2
12	Cook, Leander H	W $\frac{3}{4}$ 3	1	L S	2
102	Cowan, Wm	E hf 13	2	F	3
195	Davis, Wm	E pt gore 15	4	F	4
196	Davis, Louis T	E pt gore 15	4	F	4
J 82	Diamond, Wm	W hf W hf 10	2	F	2
J118	Dinning, Robert	E hf 2	3	F	2
131	Dinning, James	E hf E hf 5	3	F	2
132	Dinning, John H	E hf 5	4	L S	2
J135	Dinning, Wm	lot 7	3	F	2
172	Dinning, Matthew	E hf 4	4	F	2
J173	Dinning, James	E hf 4	4	F	2
J174	Dinning, George	E hf 4	4	F	2
J175	Dinning, John	W hf 5	4	F	2
J 3	Eastabrook, Joseph	N hf W hf 1	1	F	2
5	Eastabrook, Wm	W hf 2	1	F	2
J 6	Eastabrook, Henry	W hf 2	1	F	2
J 72	Eastabrook, Richard	W hf 7	2	F	2
73	Eastabrook, Daniel B.	W hf 7	2	L S	2
J 7	Edgar, James	E hf 2	1	F	2
J154	Elliott, Henry	N pt gore 15	3	F	4
J155	Elliott, John	N pt gore 15	3	F	4
J 65	Ferguson, Isaac	S hf E hf 3	2	F	2
J116	Ferguson, Ralph	E hf 1	3	F	1
J117	Ferguson, Wm H	W hf W hf 2	3	F	1
J165	Ferguson, David	E $\frac{3}{4}$ E hf 2	4	F	1
J119	Field, Wm	W hf 3	3	F	1
J 48	Fitzgerald, Wm	E hf 16, gore 17	1	F	3
J 1	Foster, Isaac J.	S hf W hf 1	1	F	2
J 2	Foster, John T	S hf W hf 1	1	F	2



Roll No.	NAME.	LOT.	Concession or Street.	Other Description.	P.O.
J 19	Foster, George jr	pt E hf 5	1	F	2
20	Foster, John J	pt E hf 5	1	LS	2
J 24	Foster, George W	E hf W hf 7	1	F	2
25	Foster, Charles	W hf W hf 7	1	F	2
29	Foster, George sr	N-W corner E hf 7	1	F	2
J 31	Foster, Charles jr	W hf 8	1	T	2
J 34	Foster, Wm H	W hf 9	1	T	2
J 14	Freer, Henry	E hf 4	1	F	2
J 15	Freer, Albert W	N-W ¼ & E hf W hf 4	2	F	2
J 16	Freer, George W	N W ¼ & E hf W hf 4	2	F	2
101	Glover, John W	E hf 13	2	F	US
J 40	Gosden, John	E hf 11	1	F	2
J 77	Griffith, John	E hf 8	2	F	2
J 78	Griffith, Michael	E hf 8	2	F	2
J 79	Griffith, Thomas	E hf 8	2	F	2
J 94	Guilfoyle, Henry	W hf E hf 12	2	F	3
95	Guilfoyle, Wm H	W hf E hf 12	2	F	3
J 54	Haldane, Robert	E pt gore 19	1	F	3
55	Haldane, George M	E pt gore 19	1	LS	3
J 83	Harten, James	W hf E hf 10	1	F	2
J 145	Hawken, Frank	N hf 12	3	F	2
183	Hawken, Henry	W hf N hf 9	4	F	2
J 184	Hawken, Edward J	E hf N hf 9	4	F	2
J 185	Hawken, Wm H	N-W corner 10	4	F	2
J 58	Hendershot, James	W hf 2	2	T	2
J 158	Henderson, Robert	S hf N W ¼ 1	4	F	1
J 80	Hughes, Anthony	W hf 9	2	F	2
J 81	Hughes, Thomas S	E hf 9	2	F	2
J 63	Hunter, Peter	E hf W hf 3	2	F	2
J 27	Inch, Frank	E hf 6	1	F	2
33	Inch, Richard	W hf 9	1	F	2
J 47	Ireland, Joseph	E hf 15, W hf 16	1	F	3
J 21	Johnston, Hardy	W hf 6	1	F	2
22	Johnston, Wm Jas	W hf 6	1	LS	2
23	Johnston, Geo Thomas	W hf 6	1	LS	2
17	Joyce, Ulick	W hf 5	1	F	2
J 18	Joyce, John	W hf 5	1	F	2
J 98	Kellam, James sr	W hf 13	2	F	3
J 99	Kellam, James jr	W hf 13	2	F	3
100	Kellam, Mark	W hf 13	2	LS	3
199	Kettlewell, Richard	pt gore 16	4	F	3
192	Kenning, George	N hf E hf 14	4	Oc	4
J 46	Knight, John	E ¾ E hf 14	1	F	3
104	Knight, Barnabas	E hf 14	2	F	3
J 105	Knight, Arthur R	E hf W hf 14	2	F	3
J 152	Knight, James	N pt E pt 14	3	F	4
J 68	Langford, George	E hf 5	2	F	2
69	Langford, Charles H	E hf 5	2	LS	2
J 30	Law, Wm	W hf 8	1	F	2
J 45	Lewis, George	pt W hf 14	1	F	3

## POLLING SUB-DIVISION No. 1.

Roll No.	NAME.	LOT.	Concession or Street.	Other Description.	P.O.
J149	Lewis, Wm	W hf E hf & E $\frac{1}{4}$ W $\frac{1}{2}$	13.3	T	4
159	Lightfoot, John	S hf W hf 1	4	F	1
160	Lightfoot, Thomas	S hf W hf 1	4	F	1
J137	Lyons, James	E hf 8	3	F	2
J176	Lyons, Alexander	S hf 6	4	F	2
178	Moyle, Thomas sr	W pt 8	4	F	1
J179	Moyle, Thomas jr	W pt 8	4	T	1
180	Moyle, Richard	S hf 9	4	F	1
181	Moyle, Walter R	S hf 9	1	L S	1
182	Moyle, Christopher	R. S hf 9	4	L S	1
J153	Murphy, Richard	E pt 14	3	F	4
J 59	McDonald, Peter	E hf 2	2	F	2
60	McDonald, Allan	E hf 2	2	L S	2
J193	McFall, Thomas	S hf E hf 14	4	F	4
J 93	McIntyre, Wm	E pt W hf 12	2	F	2
J 96	McIntyre, John	E hf E hf 12	2	F	2
J 97	McIntyre, James	E hf E hf 13	4	F	2
120	McLean, Angus	W hf 4	3	F	1
121	McLean, Daniel	W hf 4	3	L S	1
122	McLean, Alexander	S qr W hf 4	2	F	9
J103	Ogg, Wm	E hf 13	2	T	3
J 39	O'Neil, John	W hf 11	1	F	2
J 41	O'Neil, Frederick	W hf 12	1	F	2
188	O'Neil, John H.	E hf 12	4	F	3
J 4	Patterson, James	lot 1	2	F	2
32	Patterson, Samuel	E hf E hf 8	1	F	2
J191	Patterson, Wm	W hf 14	4	F	4
57	Patrick, J B.	W pt gore 20	1	F	3
J136	Pike, Thomas	W hf 8	3	F	2
J429	Pearson, Edward jr	S pt gore 15	3	F	4
J430	Pearson, Joseph	S pt gore 15	3	F	4
J198	Richardson, Wm	pt gore 16	4	F	4
J201	Richardson, Thomas	S pt W hf 10	4	F	1
J197	Ross, Wm	S hf 7	4	F	2
J 61	Shamblaw, James	W hf W hf 3	2	F	2
J 62	Shamblaw, Aylesworth	W hf W hf 3	2	F	2
J144	Shepherd, Charles T	S hf 12	3	F	4
J187	Shepherd, Charles	E pt W hf 12	4	F	4
91	Smith, George	W pt W hf 12	2	F	2
92	Smith, John	W pt W hf 12	2	L S	2
J143	Smithrim, Richard	E hf 11	3	F	4
164	Stewart, John	W $\frac{1}{4}$ E hf 2	4	F	1
J194	Stratton, Thomas	W pt gore 15	4	F	4
J 84	Sullivan, James	E hf E hf 10	2	F	2
J 85	Sullivan, Cornelius	E hf W hf 10	2	F	2
86	Sullivan, Lawrence	W hf W hf 11	2	F	2
87	Sullivan, John	W hf W hf 11	2	L S	2
J109	Sumner, Augustus	S pt gore 16	2	F	4
161	Taylor, Wm	E hf 1	4	F	1
162	Taylor, Charles W	E hf 1	4	F	1

POLLING SUB-DIVISION No. 1.

5

Roll No.	NAME.	LOT.	Concession or Street.	Other Description.	P.O.
J 163	Taylor, George	W hf 2	4	F	1
J 197	Taylor, Charles	pt gore 16	4	T	4
J 38	Thompson, John	E hf E hf 10	1	F	2
168	Thompson, Harrison	N hf W hf 4	4	F	1
J 169	Thompson, John N.	S hf W hf 4	4	F	1
170	Thompson, Harrison jr.	S hf W hf 4	4	L S	1
171	Thompson, James	S hf W hf 4	4	L S	1
114	Titball, Henry	E pt N hf gore 17	2	F	3
J 35	Trueman, John	E hf 9	1	F	2
J 64	Watson, Wm	N hf E hf 3	2	F	2
J 124	Watt, Adam	E hf 4	3	F	2
J 125	Watt, Robert	E hf 4	3	F	2
J 126	Watt, Wm J	E hf 4	3	F	2
J 127	Watt, John	W hf 1	3	F	2
J 42	Wilkinson, Joseph	E hf 12	1	F	3
J 43	Wilkinson, Wm G	Lot 13	1	F	3
J 44	Wilkinson, Robert C.	W hf N hf 14	2	F	3
J 56	Williams, Michael	E pt gore 20	1	F	3
J 49	Wilson, John	Gore 18	1	F	3
J 50	Wilson, Hiram	Gore 18	1	F	3
J 106	Wilson, Albert	Lot 15	2	F	3
J 107	Wilson, David	Lot 15	2	F	3
J 108	Wilson, George	Lot 15	2	F	3
112	Wilson, George sr	pt gore 17	2	F	3
J 146	Wilson, Thomas	W $\frac{3}{4}$ W hf 13	3	F	3
J 147	Wilson, Francis	W $\frac{3}{4}$ W hf 13	3	T	3
J 148	Wilson, Hiram	W $\frac{1}{2}$ E $\frac{1}{2}$ & E $\frac{1}{4}$ W $\frac{1}{2}$ 13	3	F	3
J 150	Wilson, Wm	E hf E hf 13	3	F	4
J 138	Wray, Cecil	W hf 9	3	F	2
157	Wrinkle, Joseph	S gore 16	3	F	4

**PART II.—Persons entitled to Vote at Municipal Elections ONLY.**

88	Adams, Mrs M E	E hf W hf 11	2	F	2
186	Parker, Mrs Isabella	W pt W hf 12	4	F	4

**PART III.—Persons entitled to Vote at Elections to the Legislative Assembly ONLY.**

134	Blackstock, Hugh	pt S hf 6	3	M F	2
26	Kerr, G J	pt 7	1	H	2

## Polling Sub-Division No. 2,

Comprising the 5th, 6th, 7th, 8th, 9th, 10th and 11th Concessions, and  
from Lot 17 to Lot 24, inclusive, in the 12th Concession.

Polling at Town Hall, Napier.

### PART 1.—Persons entitled to Vote at BOTH Municipal Elections and Elections to the Legislative Assembly.

ABBREVIATIONS:—F., Owner; L. S., Landholder's Son; M. F., Manhood  
Franchise; T. Tenant; Oc., Occupant; H., Householder.

Roll No.	NAME.	LOT.	Concession or Street.	Other Description.	P.O.
227	Aitken, John	pt lot 11	5	F	1
J228	Aitken, Wm.	pt lot 11	5	F	1
294	Anthony, Charles	W hf 2	7	F	1
J295	Anthony, Richard	W hf 2	7	F	1
259	Arthurs, Alexander	pt lot 3	6	F	11
J220	Beer, Jacob C jr.	lot 6	5	F	1
J221	Beer, Jacob C sr.	lot 7 W hf 8	5	F	1
J277	Bennett, John	N hf E hf 9	6	F	4
J205	Bowie, John sr.	E hf 1	5	F	1
206	Bowie, John jr.	E hf E hf 2	5	L S	1
207	Bowie, Robert	W hf 2	5	L S	1
303	Bowlby, Alexander	pt lot 3	7	F	1
J360	Bowlby, Wesley	E hf 5	7	F	1
J302	Bowlby, John	E hf 5	8	T	1
273	Brady, Bernard	W hf 9	6	F	1
J274	Brady, John J.	S hf W hf 9	5	F	1
J275	Brady, Thomas	W hf 9	6	F	1
J276	Brady, Bernard jr.	W hf 9	6	F	1
266	Brnell, John	pt lot 4	6	F	12
J298	Brock, Robert	pt E hf 3	7	F	1
J299	Brock, Alfred	pt E hf 3	7	F	4
J231	Brown, Wm.	E hf 12	5	F	4
J338	Brown, David	W pt gore 9	7	F	4
J287	Burden, Wm R.	E pt gore, 11 gore 12	6	F	4
288	Burden, James R.	E pt gore, 11 gore 12	6	F	4
J309	Calvert, W S	pt lot 3	7	F	1
J242	Cameron, Alexander	E hf 2	6	F	1
243	Cameron, James	N W pt 3	6	F	3
J245	Cameron, James W	E pt & S pt W hf 3	6	F	1
J373	Campbell, Donald	W hf 1	10	F	13
J374	Campbell, Donald D.	W hf 1	10	F	13
375	Campbell, Peter	E hf 1	10	F	5
J376	Campbell, Duncan	E hf 1	10	F	5
J377	Campbell, Donald	E hf 1	10	F	5

Roll No.	NAME.	LOT.	Concession or Street.	Other Description.	P.O.
J420	Campbell, John J	N hf 20	12	F	5
421	Campbell, Duncan B	N hf 20	12	F	5
423	Campbell, John F	E pt N hf 22	12	F	5
460	Campbell, Dugald	pt S hf 20	12	F	13
461	Campbell, Peter	pt S hf 20	12	F	13
462	Campbell, Archibald	pt S hf 20	12	F	13
463	Campbell, Duncan	pt S hf 20	12	F	13
464	Campbell, Wm	pt S hf 20	12	F	13
J244	Canning, F W	W hf E hf 2	5	T	1
305	Case, Ira	pt lot 3	7	F	1
306	Case, Win	pt lot 3	7	F	1
J222	Dodd, James	W hf 10	5	F	1
223	Dodd, James A	W hf 10	5	L S	1
J252	Dunlop, Richard	pt lot 3	6	F	1
251	Early, R F	pt lot 3	6	T	1
J213	Emerick, James	E hf 3	5	F	1
214	Emerick, John W	E hf 3	5	L S	1
353	Field, Joseph	W hf N hf 4	8	F	1
354	Field, Thomas	W hf N hf 4	8	L S	1
355	Field, George	W hf N hf 4	8	L S	1
J356	Field, Henry	N hf S hf 4	8	F	1
J357	Field, John	S hf S hf 4	8	F	1
J364	Gardner, Thomas	W hf 1	9	F	13
J365	Gardner, James	E hf 1	9	F	13
366	Gardner, John	E hf 1	9	F	13
J332	Goldrick, Edgar	W hf E hf 6	7	F	1
J410	Goldrick, Gilman jr	E hf E hf 6	7	F	1
411	Goldrick, John W	E corner gore 8	8	F	1
J323	Gough, Henry	E hf 4 W hf 5	7	F	1
324	Gough, John B	E hf 4 W hf 5	7	L S	1
325	Gough, Richard J	E hf 4 W hf 5	7	L S	1
326	Gough, Henry T	E hf 4 W hf 5	7	L S	1
327	Gough, George E	E hf 4 W hf 5	7	L S	1
J333	Gough, Ogle R	lot 7	7	T	1
J457	Greaves, James	pt lot 20	12	F	5
J204	Hardy, Archie	W hf 1	5	F	1
261	Hardy, Thomas	pt lot 3	6	T	1
J237	Hay, Donald	W hf 1	6	F	1
J238	Hay, Samuel	E hf 1	6	F	1
J468	Hills, John	E hf S hf 23	12	F	5
J469	Hills, Simon	E hf S hf 23	12	T	5
J215	Hughes, John sr	W hf 5	5	F	1
J216	Hughes, John jr	E hf 4	6	F	1
217	Hughes, Frederick P	pt W hf 4	5	F	3
J225	Husband, James	S pt E hf 10	5	F	4
J226	Husband, Edgar	S pt E hf 10	5	F	4
J236	Husband, Harvey	gore 14	5	F	4
248	Hutton, John	pt lot 3	6	F	1
249	Hutton, Will A	pt lot 3	6	F	1
250	Kingston, Richard	pt lot 3	6	T	1
285	Kilbride, Patrick	W pt gore 11	6	F	4

## POLLING SUB-DIVISION No. 2.

Roll No.	NAME.	LOT.	Concession or Street.	Other Description.	P.O.
286	Kilbride, J W	W pt gore 11	6	F	4
307	Knapton, Charles	pt lot 3	7	F	1
319	Leitch, Duncan L	pt lot 3	7	F	3
381	Leitch, Hugh L	gore 1	11	F	5
382	Leitch, Wm M	gore 1	11	L S	5
424	Leitch, Hugh J	W pt N hf 22	12	F	5
1229	Lightfoot, George sr	W hf 12	5	F	4
230	Lightfoot, George jr	W hf 12	5	F	4
1358	Lightfoot, Wm	W hf 5	8	F	1
361	Lightfoot, Thomas	E hf 5	8	F	4
246	Lowe, Henry	pt lot 3	6	T	1
263	Mackay, Thomas	pt lots 3 & 4	6	F	1
264	Mackay, Thomas B	pt lots 3 & 4	6	F	1
1270	Megary, James	lot 6	6	T	1
254	Mitchell, John	pt lot 3	6	T	1
255	Mitchell, Samuel	pt lot 3	6	T	1
344	Moore, John sr	N hf W hf 1	6	F	1
345	Moore, Walter	N hf W hf 1	8	L S	1
1346	Moore, John jr	N hf W hf 1	8	F	1
1359	Montgomery, Samuel	W hf 5	8	F	1
234	Monger, Henry	E pt gore 13	5	T	1
1235	Monger, Charles	E pt gore 13	5	F	4
1239	Morcom, Joseph	W hf W hf 2	6	F	4
1240	Morcom, Walter	E hf W hf 2	6	F	1
241	Morcom, John	E hf W hf 2	6	F	1
265	Morecom, Frank	pt lot 4	6	T	1
224	Morrison, Stewart	N pt E hf 10	5	F	1
378	Munro, Archibald	W pt gore 2	10	F	5
379	Munro, Neil	W pt gore 2	10	L S	5
380	Munro, George	W pt gore 2	10	L S	5
1422	Munro, Neil	pt N hf 21	12	F	5
505	Munro, Malcolm	S pt 24	12	F	7
506	Munro, Neil	S pt 24	12	F	7
279	Murrican, John	N pt gore 10	6	T	4
1347	McBane, Neil	E hf 1, W hf 2	8	F	1
1458	McBride, Jas D	pt lot 20	12	F	5
1271	McCaw, Daniel	lot 8	6	F	1
1272	McCaw, James	lot 8	6	F	1
1335	McCaw, John	E pt gore 8	7	F	1
336	McCaw, Wm H	E pt gore 8	7	L S	1
337	McCaw, James W	E pt gore 8	7	L S	1
1368	McCallum, John	E pt gore 2, gore 3	10	F	13
459	McCallum, Archibald	pt lot 20	12	F	5
296	McDermid, Andrew	E hf 2	9	F	1
367	McDougall, Archibald	W hf 2	7	F	13
1369	McDougall, Allan	E $\frac{1}{2}$ 2 W $\frac{1}{2}$ W $\frac{1}{2}$ 3	9	F	5
455	McEachern, David	S hf 18	12	F	14
304	McIntyre, Malcolm	pt lot 3	7	F	1
1334	McIntyre, Colin	W hf 8	7	F	1
466	McIntyre, Donald	pt S hf 21	12	L S	5
268	McKay, James	pt lots 3 & 4	6	T	1
1425	McLanghlin, Robert	N hf 23	12	F	7
1123	McLean, Wm	E hf 8	5	F	1

POLLING SUB-DIVISION No. 2.

P.O.	Roll No.	NAME.	LOT.	Concession or Street.	Other Description.	P.O.
4	348	McNally, Wm	W hf 3	8	F	1
1	349	McNally, David	W hf 3	8	L S	1
	3470	McNaughton, Duacan	W hf S hf 23	12	F	5
3	341	McNeil, John	S hf W hf 1	8	F	1
5	342	McNeil, Donald	S hf W hf 1	8	F	1
5	343	McNeil, Malcolm	S hf W hf 1	8	F	1
5	289	McPhail, Dugald N	N hf W hf 1	7	T	13
4	290	McPhail, Donald	N hf W hf 1	7	T	13
4	256	McTavish, Wm	pt lot 3	6	T	1
1	257	Nixon, Alexander	pt lot 3	6	T	1
4	258	Nixon, James W	pt lot 3	6	T	1
1	280	O'Connor, John	N pt gore 10	6	F	4
1	282	O'Connor, Charles	S pt gore 10	6	T	4
1	283	O'Connor, Frank	S pt gore 10	6	T	4
1	318	Ormerod, Wm	pt lot 4	7	F	1
1	339	Perry, John	E pt gore 9	7	F	1
1	372	Perry, Joseph W	E pt gore 5, gore 6	9	F	5
1	308	Petheron, J B	pt lot 3	7	T	1
1	291	Phillips, George	S E 3 1	7	F	1
4	292	Phillips, Wm K	S E 3 1	7	F	1
4	232	Potter, Matthew	W pt gore 13	5	F	4
1	233	Potter, John	W pt gore 13	5	F	4
1	320	Robinson, John	pt lot 3	7	T	1
1	269	Ron'ly, Frederiek	lot 5	6	T	1
5	297	Rundle, Wm F	pt lots 3 & 4	7	F	1
5	278	Sessions, James D	N hf E hf 9	6	T	1
5	317	Shrapnell, W H	pt lot 3	7	T	1
5	315	Stevenson, John	pt lot 3	7	T	1
7	311	Sutherland, Wm H	W hf 3	7	F	1
7	314	Sutherland, Sidney	pt lot 3	7	F	1
4	351	Sutherland, John C	E hf 3	8	F	1
1	260	Swafford, John	pt lot 3	6	T	1
5	208	Taylor, John W	W hf W hf 3	5	F	1
1	209	Taylor, Robert J	W hf W hf 3	5	F	1
1	210	Taylor, Daniel	E hf W hf 3	5	F	1
1	211	Taylor, Albert G	E hf W hf 3	5	F	1
1	212	Taylor, Thomas	E hf W hf 3	5	F	1
13	262	Taylor, Charles F	pt lot 4	6	F	15
5	301	Thomas, Elisha J	pt lot 3	7	F	1
1	267	Thompkins, Robert	pt lot 4	5	T	1
13	218	Toohill, Robert	E hf 4	5	F	1
5	219	Toohill, Wm	E hf 5	5	F	1
4	247	Toohill, Moses L	pt lot 3	6	F	1
1	321	Toohill, John J	pt W hf 4	7	F	1
1	322	Toohill, Louis L	pt W hf 4	7	F	1
5	3418	Walker, James	N hf 17 & 18	12	F	5
7	3456	Walker, John A	S hf 19	12	F	5
1	3467	Walker, Dugald L	S hf 22	12	F	5
1	3419	Warren, Thomas	N hf 19	12	F	5



## POLLING SUB-DIVISION No. 2.

Roll No.	NAME.	LOT.	Concession or Street.	Other Description.	P.O.
328	Winter, Wm	W hf 6	7	F	1
329	Winter, George	W hf 6	7	L S	1
330	Winter, Frank	W hf 6	7	L S	1
331	Winter, Vietor	W hf 6	7	L S	1
253	Wrinkle, James	pt lot 3	6	T	1

**PART II.—Persons entitled to Vote at Municipal Elections ONLY.**

363	Golderiek, Miss Maria	pt gore 7	8	F	1
284	Murrican, Miss Mary	S pt gore 10	6	F	4
300	McIlwane, Miss Anna	pt lot 3	7	F	1
465	McIntyre, Mrs E	pt S hf 21	12	F	5
281	O'Connor, Mrs B	N pt gore 10	6	F	4
371	Perry, Mrs E	E pt gore 5, gore 6	9	F	5
293	Phillips, Mrs M	S E $\frac{1}{4}$ 1	7	F	1
310	Sutherland, Mrs C	pt lot 3	7	F	1
312	Sutherland, Miss Bella	pt lot 3	7	F	1
313	Sutherland, Miss Maggie	pt lot 3	7	F	1
350	Sutherland, Mrs M A	E hf 3	8	F	1
352	Sutherland, Miss Marion	E hf 3	8	F	1
417	Walker, Mrs M	N hf 17 & 18	12	F	5

**PART III.—Persons entitled to Vote at Elections to the Legislative Assembly ONLY.**

302	McIntcheon, T L	pt lot 3	7	H	1
316	Whyte, Wm	pt lot 3	7	M F	1

**Polling Sub-Division No. 3,**

Comprising Lot 1 to 16, both inclusive, <sup>in the 12th Con.</sup> and the whole of the 13th and 14th Concessions. Polling at the School House, on Lot 13, Concession 13.

**PART 1.—Persons entitled to Vote at BOTH Municipal Elections and Elections to the Legislative Assembly.**

ABBREVIATIONS :—F., Owner ; L. S., Landholder's Son ; M. F., Manhood Franchise ; T., Tenant ; Oc., Occupant ; H., Housholder.

Roll No.	NAME.	LOT.	Concession or Street.	Other Description.	P.O.
530	Beckett, John	E hf S hf 15	13.	F	6
J532	Bowlby, James	E hf S hf 17	13.	F	5
J562	Boyd, John B	N hf 12	14.	F	6
565	Boyd, Wm	N $\frac{1}{4}$ 13.	14.	F	6
J566	Boyd, Andrew	N $\frac{1}{4}$ 13.	14.	F	6
567	Boyd, Charles	N $\frac{1}{4}$ 13.	14.	L S	6
397	Brown, Robert	N hf 8	12.	F	4
398	Brown, George	N hf 8	12.	L S	4
399	Brown, James sr	N hf 9	12.	F	4
J400	Brown, James R.	N hf 9	12.	F	4
441	Brown, Charles	S hf 8	12.	F	6
J442	Brown, Richard	S hf 8	12.	F	6
J443	Brown, David E.	S hf 8	12.	F	6
444	Brown, Henry J.	S hf 8	12.	L S	6
J482	Brown, John	Lot 7	13.	F	6
J483	Brown, James	N hf 8	13.	F	6
J387	Bryant, Levi jr	E $\frac{1}{4}$ N $\frac{1}{2}$ 3	12.	F	4
388	Bryant, Wm	W qr N hf 3	12.	F	4
J389	Bryant, Levi sr	N hf 4	12.	F	4
J390	Bryant, Albert	N hf 4	12.	F	4
J513	Bryan, Jeremiah	S hf 3	13.	F	8
514	Bryan, George D.	S hf 3	13.	L S	8
J515	Bryan, Edmund A.	S hf 3	13.	F	8
516	Bryan, Henry F.	S hf 3	13.	L S	8
J391	Bunting, Richard	N hf 5	12.	T	4
J488	Cameron, Daniel	N pt 12	13.	F	6
J527	Cameron, John M	S pt 12	13.	F	6
616	Campbell, John	N hf 16	13.	F	13
J406	Cark, James	E hf N hf 11	12.	T	4
J408	Clark, Wm	W $\frac{1}{2}$ N $\frac{1}{2}$ 12, E $\frac{1}{2}$ N $\frac{1}{2}$ 13.	12.	F	1
J487	Clark, Thomas	N hf 11	13.	T	6
589	Davis, Howard	W pt S hf 2	14.	F	8
J450	Dewar, Dmcan	S hf 13.	12.	F	5
451	Dewar, Donald	S hf 13.	12.	L S	5
534	Ferguson, Peter	W hf S hf 17	13.	F	5
392	Fisher, Wm.	N hf 5.	12.	F	4

## POLLING SUB-DIVISION No. 3.

Roll No.	NAME.	LOT.	Concession or Street.	Other Description.	P.O.
393	Fisher, Wellington	N hf 5	12	F	1
517	Fonger, John	W hf S hf 5	13	T	6
518	Fonger, Ralph	W hf S hf 5	13	T	6
434	Gallaher, Owen	E hf S hf 3	12	F	4
5469	Goldrick, Edward	W hf N hf 13	12	F	1
5416	Goldrick, Gilman sr.	W hf N hf 15	12	F	1
5407	Gough, Matthew	E hf N hf 12	12	F	6
5495	Gough, George	W hf N hf 15	13	F	5
528	Gough, John	pt S hf 14	13	F	6
549	Gullen, Franklin A	N pt 3	14	F	8
508	Harrington, John sr.	S hf 1	13	F	4
509	Harrington, John jr.	S hf 1	13	F	4
510	Harrington, James	S hf 1	13	F	4
511	Harrington, Daniel	S hf 1	13	F	4
5550	Heatherington, Jno jr.	W hf N hf 2	14	F	8
5551	Heatherington, Jno sr.	N hf 4	14	F	8
5552	Heatherington, Wm.	N hf 4	14	F	8
5553	Heatherington, David	W hf S hf 5	13	T	8
5523	Henry, Richard	S hf 10	13	T	8
524	Henry, Herman G.	pt N hf 8	13	F	6
5604	Henry, Wm	S hf 12	14	F	U S
605	Henry, Wm R.	S hf 12	14	F	6
5612	Henry, John	W hf S hf 15	14	F	6
5614	Hick, Green	W pt lot 16	14	F	12
615	Hick, James H	W pt lot 16	14	F L S	5
5531	Kelly, Thoraas	S hf 16, W hf S hf 15	13	F	5
5595	Kettlewell, Wm	S hf 6	14	F	8
5596	Kettlewell, Darins	S hf 7	14	F	8
5597	Kettlewell, Wm T	S hf 7	14	F	8
5598	Kettlewell, Chas R.	S hf 7	14	F	8
5600	Kettlewell, Frank	W hf S hf 8	14	F	8
627	Kingsmill, Nichol	C S R Co	12, 13 & 14	Secretary	16
5519	Lakin, John	S hf 6	13	F	6
5555	Langhton, Joseph	pt N hf 5	14	F	8
5586	Langhton, Samuel C.	pt E hf 1	14	F	8
5588	Langhton, Samuel	E hf S hf 2	14	F	8
5590	Langhton, Charles	W pt S hf 3	14	F	8
5591	Langhton, Edward A.	W pt S hf 3	14	F	8
5592	Langhton, George	S hf 4	14	F	8
5593	Langhton, John S	S hf 4	14	F	8
5594	Langhton, Benjamin	S hf 5	14	F	8
491	Leitch, Archibald	N hf 14, E hf N hf 15	13	F	8
5492	Leitch, Wm A.	N hf 14, E hf N hf 15	13	F	5
5493	Leitch, John A	N hf 14, E hf N hf 15	13	F	5
5494	Leitch, Donald A	N hf 14, E hf N hf 15	13	F	5
618	Leitch, Laehlin	W hf S hf 19	14	F	5
619	Leitch, David	W hf S hf 19	14	F	14
5621	Leitch, Archibald	S hf 21	14	F	14
622	Leitch, Wm sr	S hf 22	14	F	5
5623	Leitch, Donald	S hf 22	14	F	5
624	Leitch, Wm jr.	S hf 22	14	F L S	5
585	Marshall, Frank	N corner S hf 1	14	F	8

POLLING SUB-DIVISION No. 3.

13

Roll No.	NAME.	LOT.	Concession or Street.	Other Description.	P.O.
1	526 Merrick, Benjamin	S hf 11	13	T	6
6	453 Mitchell, John D	S $\frac{1}{2}$ 15, W pt S $\frac{1}{2}$ 14	12	F	5
6	536 Mitchell, Donald	W hf S hf 19	13	F	5
4	485 Montgomery, John	E hf S hf 9	12	T	6
1	520 Moore, Sylvester	S hf 8	13	F	6
1	521 Moore, Robert	N hf 7	14	F	6
6	522 Moore, James F	E hf S hf 9	13	F	6
5	525 Moore, Archibald	S hf 11	13	F	3
6	571 Moore, George	N hf N hf 15	14	F	6
6	607 Moore, Thomas E	E hf S hf 14	14	F	12
8	478 Mortimore, John W	N hf 5 and 6	13	F	4
4	602 Morrow, James	E pt S hf 10	14	F	3
4	603 Morrow, Joseph	pt S $\frac{1}{2}$ 10, E $\frac{1}{2}$ S $\frac{1}{2}$ 11	14	F	6
4	445 Murray, Daniel	E hf S hf 10, W $\frac{1}{2}$ S $\frac{1}{2}$ 9	12	F	6
4	471 Murray, Robert	N hf 1	13	F	6
4	486 Murray, Kenneth	N hf 10	13	F	6
8	504 Munro, Archibald	W pt 24	13	F	7
8	573 Munro, Hugh	W pt N hf 17	14	F	5
8	580 McAlpine, Duncan	N hf 22	14	F	5
6	625 McAlpine, Alexander	S hf 23	14	F	14
U S	572 McArthur, John	E hf N hf 16	14	F	6
6	383 McBride, Duncan	pt N corner 1	12	F	4
6	535 McCallum, Neil	pt S hf 19	13	F	5
12	537 McCallum, Donald	N hf 20	14	F	5
5	538 McCallum, Hugh	S hf 22	13	F	5
5	539 McCallum, Dugald	W hf N hf 22	13	F	5
5	540 McCallum, Wm	W hf S hf 21	13	F	5
8	541 McCallum, Angus	W hf S hf 21	13	F	5
8	544 McCallum, Donald	S E corner 24	13	F	7
8	545 McCallum, Alexander	S E corner 24	13	F	7
8	412 McDougall, Samuel	N hf 14	12	F	1
8	413 McDougall, Angus	N hf 14	12	L S	1
8	414 McDougall, Archibald	N hf 14	12	L S	1
16	415 McDougall, Hugh	N hf 14	12	L S	1
6	437 McFall, John	W hf S pt 6	12	F	4
8	438 McFall, George	E hf S pt 6	12	F	4
8	620 McFarlane, John H	S hf 20	14	F	14
8	503 McIntyre, Malcolm	N hf 23	13	F	5
8	533 McIntyre, Duncan B	W hf S hf 17	13	T	5
8	578 McIntyre, George	N hf 21	14	F	14
8	579 McIntyre, Duncan	N hf 21	14	F	14
8	581 McIntyre, Duncan B	E hf S hf 19	14	F	7
8	532 McIntyre, Hugh B	pt lot 24	14	F	7
8	542 McKellar, Archibald	S hf 23	13	F	7
5	543 McKellar, Neil	W hf N hf 23	14	F	14
5	583 McKellar, Dugald	W pt 24	14	F	7
5	584 McKellar, Dugald jr	W pt 24	14	F	7
5	626 McKellar, Archibald	S pt 24	14	F	7
14	474 McLean, Neil	N hf 3	13	F	4
14	576 McNeil, Alexander	W hf N hf 19	14	F	5
5	577 McNeil, Peter	W hf N hf 19	14	L S	5
5	617 McNeil, Neil	S hf 18	14	F	5
8	554 Nichols, Thomas	W hf S hf 5	13	F	8

Roll No.	NAME.	LOT.	Concession or Street.	Other Description.	P.O.
J609	Old, Wm G	E hf S hf 15	14	F	12
J610	Old, Charles A	E hf S hf 15	14	F	12
J454	Patterson, John	S hf 16	12	F	5
426	Pearson, Edward sr	S hf 1	12	F	4
J427	Pearson, Thomas	S hf 1	12	F	4
428	Pearson, Arthur	S hf 1	12	F	4
J340	Perry, Peter R.	W hf N hf 11	12	F	1
J452	Perry, Wm H	E pt S hf 14	12	F	5
J477	Perry, John R.	W hf N hf 4	13	F	4
J440	Pettit, Richard	pt S hf 7	12	F	4
500	Precece, John	pt lot 20	13	F	5
J501	Precece, Joseph	W hf N hf 20	13	T	5
J557	Reilly, John H	N hf 9	14	F	6
J558	Reilly, Wm	E hf N hf 10	14	F	6
J559	Reilly, Richard	W hf N hf 10	14	F	6
J560	Reilly, Thomas P	S hf 9	14	F	6
J561	Reilly, John	N hf 11	14	F	6
601	Reilly, George	E pt S hf 10	14	T	6
J435	Richardson, Thomas	S hf 4	12	F	4
J436	Richardson, Robert	S hf 4	12	F	4
J613	Richardson, John	pt E hf S hf 16	14	F	5
447	Ross, Alexander	W hf S hf 11	12	F	6
448	Ross, Duncan	W hf S hf 11	12	L S	6
431	Rowe, Wm	S hf 2	12	F	4
J432	Rowe, Wm S	S hf 2	12	F	4
433	Rowe, Albert A	S hf 2	12	F	4
472	Rowe, Robert	N hf 2	13	F	4
J473	Rowe, Wm O	N hf 2	13	F	4
J512	Sifton, Charles	W hf S hf 2	13	F	3
546	Sifton, Joseph	N hf 1	14	F	3
J547	Sifton, Wm S	E hf N hf 2	14	F	3
J587	Sifton, John D.	W pt S hf 1	14	F	8
J547	Sinelair, Richard	pt N hf 18	14	T	5
J568	Towers, Charles	N hf 14	14	F	6
J569	Towers, James	N hf 14	14	F	6
J606	Towers, Thomas	S hf S hf 13	14	F	6
J394	Wallace, John	pt N hf 7	12	T	4
395	Wallace, Christopher	pt N hf 7	12	F	17
396	Wallace, Christopher jr	pt N hf 7	12	F	17
496	Walker, John	N $\frac{1}{2}$ 18, E hf N hf 19	13	F	5
497	Walker, Duncan L.	N hf 18, E hf N hf 19	13	L S	5
495	Walker Wm L	N hf 18, E hf N hf 19	13	L S	5
499	Walker, Colin L.	N hf 18, E hf N hf 19	13	L S	5
J402	Ward, John H.	E hf W hf of N hf 10	12	F	4
J403	Ward, Frank J	E hf W hf of N hf 10	12	F	4
J405	Ward, Hopper	W hf W hf of N hf 10	12	F	4
J446	Ward, Richard	E hf S $\frac{1}{2}$ 11, W $\frac{1}{2}$ S $\frac{1}{2}$ 10	12	F	4
384	Westcott, James E.	pt E hf N hf 1	12	F	4
J475	Winter, James E	E hf N hf 4	13	F	4
476	Winter, Thomas	S hf 4	13	F	3
J385	Williams, John N	E hf N hf 2	12	F	4

POLLING SUB-DIVISION No. 3.

15

Roll No.	NAME	LOT	Concession or Street.	Other Description.	P.O.
449	Yager, Thomas	S hf 12	12	F	6
489	Yager, Daniel	pt N hf 13	13	F	5
490	Yager, Wm	pt N hf 13	13	T	5

**PART II.—Persons entitled to Vote at Municipal Elections ONLY.**

529	Beckett, Mrs E	E hf S hf 15	13	F	6
563	Boyd, Miss Margaret	N hf 12	14	F	6
564	Boyd, Miss Diana	N hf 12	14	F	6
484	Brown, Mrs P	pt N hf 9	13	F	6
599	Fisher, Mrs M	E hf S hf 8	14	F	8
548	Gullen, Mrs E	N pt 3	14	F	8
570	Moore, Mrs Mary	S hf N hf 15	14	F	6
608	Moore, Mrs Jane	W hf S hf 14	14	F	12
479	Mortimore, Mrs C	S hf 5	12	F	4
480	Mortimore, Miss Jane	S hf 5	12	F	4
481	Mortimore, Miss Annie	S hf 5	12	F	4
502	McIntyre, Miss J	E hf N hf 21	13	F	5
575	McNeil, Mrs E	pt N hf 18	14	F	5
611	Old, Mrs C	E hf S hf 15	14	F	12
401	Ward, Mrs E	E hf N hf 10	12	F	4
404	Ward, Miss Mary E	E hf N hf 10	12	F	4

**PART III.—Persons entitled to Vote at Elections to the Legislative Assembly ONLY.**

507	Inch, John	S hf 5	13	M F	4
556	Wray, John A	N hf 5	14	M F	6

326 of the within named voters are qualified to serve on Juries.

I, JOHN HUTTON, Clerk of the Municipality of Metcalfe, in the County of Middlesex, do hereby certify that parts one and three of the within list constitute a correct list for the year 1889, of all persons appearing by the last revised assessment roll of the said Municipality to be entitled to vote at elections for members of the Legislative Assembly; and that parts one and two constitute a correct list for said year of all persons appearing by the said roll to be entitled to vote at Municipal Elections in said Municipality, and I hereby call upon all electors to examine the said list, and if any omissions or other errors are perceived therein, to take immediate proceedings to have the said errors corrected according to law.

Dated this 4th day of July, 1889.

JOHN HUTTON,

Clerk of Metcalfe,  
Napier. P. O.

NATHAN METCALFE Q18 X6V54 OE



