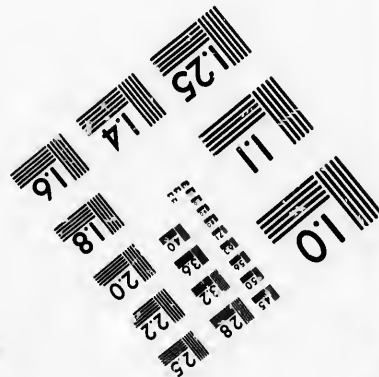
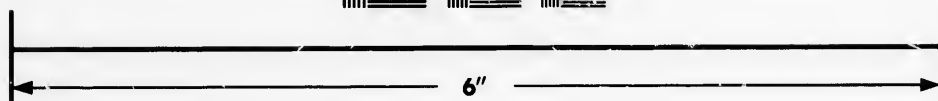
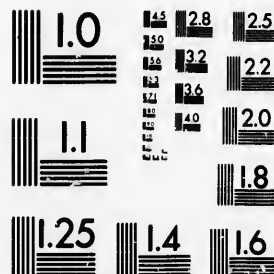


**IMAGE EVALUATION
TEST TARGET (MT-3)**



**Photographic
Sciences
Corporation**

23 WEST MAIN STREET
WEBSTER, N. Y. 14580
(716) 872-4503

1.8
2.0
2.2
2.5
2.8
3.2
3.6
4.0

**CIHM/ICMH
Microfiche
Series.**

**CIHM/ICMH
Collection de
microfiches.**



Canadian Institute for Historical Microreproductions / Institut canadien de microreproductions historiques

0.1
0.2
0.3
0.4
0.5

© 1987

Technical and Bibliographic Notes/Notes techniques et bibliographiques

The Institute has attempted to obtain the best original copy available for filming. Features of this copy which may be bibliographically unique, which may alter any of the images in the reproduction, or which may significantly change the usual method of filming, are checked below.

L'Institut a microfilmé le meilleur exemplaire qu'il lui a été possible de se procurer. Les détails de cet exemplaire qui sont peut-être uniques du point de vue bibliographique, qui peuvent modifier une image reproduite, ou qui peuvent exiger une modification dans la méthode normale de filmage sont indiqués ci-dessous.

Coloured covers/
Couverture de couleur

Covers damaged/
Couverture endommagée

Covers restored and/or laminated/
Couverture restaurée et/ou pelliculée

Cover title missing/
Le titre de couverture manque

Coloured maps/
Cartes géographiques en couleur

Coloured ink (i.e. other than blue or black)/
Encre de couleur (i.e. autre que bleue ou noire)

Coloured plates and/or illustrations/
Planches et/ou illustrations en couleur

Bound with other material/
Relié avec d'autres documents

Tight binding may cause shadows or distortion along interior margin/
La reliure serrée peut causer de l'ombre ou de la distorsion le long de la marge intérieure

Blank leaves added during restoration may appear within the text. Whenever possible, these have been omitted from filming/
Il se peut que certaines pages blanches ajoutées lors d'une restauration apparaissent dans le texte, mais, lorsque cela était possible, ces pages n'ont pas été filmées.

Additional comments:/
Commentaires supplémentaires:

[Printed ephemera] 1 sheet, 4 p.

Coloured pages/
Pages de couleur

Pages damaged/
Pages endommagées

Pages restored and/or laminated/
Pages restaurées et/ou pelliculées

Pages discoloured, stained or foxed/
Pages décolorées, tachetées ou piquées

Pages detached/
Pages détachées

Showthrough/
Transparence

Quality of print varies/
Qualité inégale de l'impression

Includes supplementary material/
Comprend du matériel supplémentaire

Only edition available/
Seule édition disponible

Pages wholly or partially obscured by errata slips, tissues, etc., have been refilmed to ensure the best possible image/
Les pages totalement ou partiellement obscurcies par un feuillet d'errata, une pelure, etc., ont été filmées à nouveau de façon à obtenir la meilleure image possible.

This item is filmed at the reduction ratio checked below/
Ce document est filmé au taux de réduction indiqué ci-dessous.

| | | | | | |
|--------------------------|--------------------------|--------------------------|--------------------------|--------------------------|-------------------------------------|
| 10X | 14X | 18X | 22X | 26X | 30X |
| <input type="checkbox"/> | <input type="checkbox"/> | <input type="checkbox"/> | <input type="checkbox"/> | <input type="checkbox"/> | <input type="checkbox"/> |
| 12X | 16X | 20X | 24X | 28X | 32X |
| <input type="checkbox"/> | <input type="checkbox"/> | <input type="checkbox"/> | <input type="checkbox"/> | <input type="checkbox"/> | <input checked="" type="checkbox"/> |

The copy filmed here has been reproduced thanks to the generosity of:

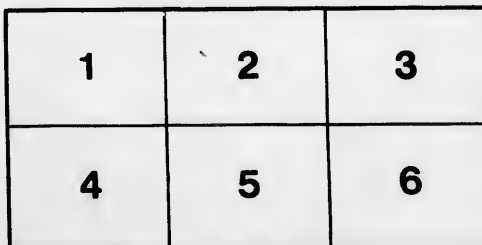
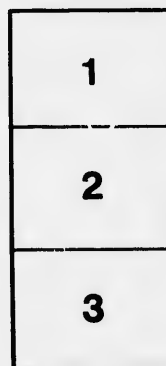
Metropolitan Toronto Library
Canadian History Department

The images appearing here are the best quality possible considering the condition and legibility of the original copy and in keeping with the filming contract specifications.

Original copies in printed paper covers are filmed beginning with the front cover and ending on the last page with a printed or illustrated impression, or the back cover when appropriate. All other original copies are filmed beginning on the first page with a printed or illustrated impression, and ending on the last page with a printed or illustrated impression.

The last recorded frame on each microfiche shall contain the symbol \rightarrow (meaning "CONTINUED"), or the symbol ∇ (meaning "END"), whichever applies.

Maps, plates, charts, etc., may be filmed at different reduction ratios. Those too large to be entirely included in one exposure are filmed beginning in the upper left hand corner, left to right and top to bottom, as many frames as required. The following diagrams illustrate the method:



L'exemplaire filmé fut reproduit grâce à la générosité de:

Metropolitan Toronto Library
Canadian History Department

Les images suivantes ont été reproduites avec le plus grand soin, compte tenu de la condition et de la netteté de l'exemplaire filmé, et en conformité avec les conditions du contrat de filmage.

Les exemplaires originaux dont la couverture en papier est imprimée sont filmés en commençant par le premier plat et en terminant soit par la dernière page qui comporte une empreinte d'impression ou d'illustration, soit par le second plat, selon le cas. Tous les autres exemplaires originaux sont filmés en commençant par la première page qui comporte une empreinte d'impression ou d'illustration et en terminant par la dernière page qui comporte une telle empreinte.

Un des symboles suivants apparaîtra sur la dernière image de chaque microfiche, selon le cas: le symbole \rightarrow signifie "A SUIVRE", le symbole ∇ signifie "FIN".

Les cartes, planches, tableaux, etc., peuvent être filmés à des taux de réduction différents. Lorsque le document est trop grand pour être reproduit en un seul cliché, il est filmé à partir de l'angle supérieur gauche, de gauche à droite, et de haut en bas, en prenant le nombre d'images nécessaire. Les diagrammes suivants illustrent la méthode.

List of Maps,



Apparatus, Globes,

AND OTHER SCHOOL REQUISITES

OF CANADIAN MANUFACTURE.

For Sale to High

And Public Schools.

AT THE

Ontario Educational Depository.

PREFATORY NOTE.

It is gratifying to state that the chief part of the Maps, Charts and Apparatus which is now supplied to the Public Schools of Ontario by the Education Department, has been manufactured in Toronto, under the direction of the Department.

This branch of home industry has been gradually introduced and carefully fostered, and the work is generally not only equal in point of excellence to the English and American makers, but in many cases it is quite superior, and at the same time cheaper. To the attainment of this most desirable object the attention of the Department has been most sedulously directed; while it has also sought to suggest such improvements and alterations as appear desirable and practicable; and

where none were necessary, it was deemed by the Department essential that in point of finish and adaptation to the objects in view, the article of Canadian manufacture should compare favourably with its English or American prototype.

Specimens of the articles manufactured in Toronto have been exhibited at the several Provincial Fairs, and excited a good deal of attention and commendation. The Apparatus manufactured includes maps, map cases, and rotary stands; brass spheres, tellurians, globes, geometrical figures and diagrams; mechanical powers, levers, air pumps, electrical machines and various other articles of brass work, illustrative of the different branches of natural philosophy.



COLLINS'S BALLS FIG. 1.



CONICAL BLACKBOARD DRIBBLE FIG. 2.



SPECIMEN SCHOOL APPARATUS OF CANADIAN MANUFACTURE FIG. 3.



ELECTRICAL BELL FIG. 4.



FLAT BLACKBOARD DRIBBLE FIG. 5.

TERMS: STRICTLY CASH.

In transmitting an order for any of the articles on sale at the Depository, care must be taken to accompany it with a remittance, and also to give directions as to the parties to whom the parcels should be sent. See Departmental Notices below.
The sole object of the Department is to provide facilities for supplying the Public Schools of Ontario with approved Books, Maps and Apparatus at cost. When the article ordered is not in stock, the nearest selection to it is made, subject, however, to the approval of the Trustees. Books, Maps and Apparatus are packed free of expense, with the exception of a small charge for Packing Boxes, by an experienced packer, but the Department will not be responsible for damage or breakage; all apparatus is sent at purchaser's risk. In case of damage or breakage, notice must be sent to the Express Company or Forwarders, not to this Department.

DEPARTMENTAL NOTICE.

PUBLIC LIBRARY BOOKS, MAPS, CHARTS, APPARATUS, AND SCHOOL PRIZE BOOKS.

The Chief Superintendent will add *one hundred per cent.* to any sum or sums *not less than five dollars*, transmitted to the Department by Municipal and School Corporations, on behalf of the High and Public Schools; and forward Public Library Books, Prize Books, Maps, Apparatus, Charts, and Diagrams, to the value of the amount thus augmented, upon receiving a list of the articles required. In all cases it will be necessary for any person acting on behalf of the Municipal or Trustee Corporation, to enclose or present a written authority to do so, verified by the Corporate Seal of the Corporation. A selection of Maps, Apparatus, Library and Prize Books, &c., to be sent, can always be made by the Department, when so desired.

Catalogues and Forms of Application furnished to School authorities on their application.

ASSORTED PRIZE BOOKS IN PACKAGES.

Selected by the Department from the Catalogue for High and Public Schools, in assorted packages as follows:—

| Package No. | Books and Cards. | 7cts. to \$10 each | Package No. | Books and Cards. | 20cts. to \$12.25 each |
|-------------|------------------|----------------------|-------------|------------------|------------------------|
| No. 1. | ditto | 7cts. to \$1.00 each | No. 11. | ditto | 20cts. to \$1.50 each |
| No. 2. | ditto | 7cts. to \$1.00 each | No. 12. | ditto | 20cts. to \$1.50 each |
| No. 3. | ditto | 7cts. to \$1.25 each | No. 13. | ditto | 25cts. to \$1.75 each |
| No. 4. | ditto | 7cts. to \$1.50 each | No. 14. | ditto | 25cts. to \$1.75 each |
| No. 5. | ditto | 7cts. to \$1.75 each | No. 15. | ditto | 25cts. to \$1.75 each |
| No. 6. | ditto | 7cts. to \$2.00 each | No. 16. | ditto | 30cts. to \$2.50 each |
| No. 7. | ditto | 7cts. to \$2.25 each | No. 17. | ditto | 30cts. to \$2.50 each |
| No. 8. | ditto | 7cts. to \$2.50 each | No. 18. | ditto | 30cts. to \$2.50 each |
| No. 9. | ditto | 7cts. to \$2.75 each | No. 19. | ditto | 35cts. to \$2.75 each |
| No. 10. | ditto | 7cts. to \$3.00 each | No. 20. | ditto | 35cts. to \$2.75 each |

Special Prices in handsomely bound Books, singly at from \$1.15 to \$5.50. In sets of from two to six volumes of Standard Literature, at from \$3.00 to \$10.00 per set. Also, Microscopes, Drawing Instruments, Drawing Books, Classical Texts, Atlases, Dictionaries, Small Magazines, Lanterns, Magnets, Compasses, Cones, Belts, Prisms, Small Globes, &c., &c.

At certain seasons of the year there being a great demand for prizes, Trustees are requested to send in their orders at as early a date as possible, so as to ensure the due despatch of their parcels in time for the examinations, and thus prevent disappointment.

I. MAPS, &c.

Mounted on Canvas and Rollers, Coloured and Varnished.

I- DEPARTMENTAL MAPS.

These maps have been revised and constructed under the direction of the Education Department, and published in Toronto expressly for the High and the Public Schools of Ontario.

| | |
|--|--------|
| World on a globular projection, size 4 feet by 6 feet eight inches | \$4 00 |
| Eastern and Western Hemispheres, (same Map as above) each | 2 25 |
| Europe, 3 feet 6 inches by 4 feet 4 inches | 3 00 |
| Europe, 4 feet 2 inches by 4 feet 6 inches | 2 50 |
| Asia, 3 feet 6 inches by 4 feet 4 inches | 3 00 |
| Asia, 4 feet 2 inches by 3 feet 6 inches | 2 50 |
| Africa, 4 feet 4 inches by 3 feet 6 inches | 2 00 |
| Africa, 3 feet 6 inches by 4 feet 2 inches | 2 50 |

| | |
|---|--------|
| America, 4 feet 4 inches by 5 feet 6 inches | \$3 00 |
| America, 3 feet 6 inches by 4 feet 2 inches | 2 50 |
| Dominion Map of British North America, including Ontario, Quebec, Nova Scotia, New Brunswick, Prince Edward Island, Newfoundland, British Columbia, Vancouver, Manitoba, &c., size 3 feet 6 inches by 7 feet 8 inches | 1 00 |
| United States, 3 feet 6 inches by 5 feet 2 inches | 3 50 |
| British Isles, 3 feet 6 inches by 4 feet 4 inches | 1 00 |
| Palestine, including (1) Bible Lands and part of the Ancient World (2) Travels of the Patriarchs from the East to Canaan (3) Route of the Tribes from Egypt to Canaan (4) Canaan divided among the 12 Tribes (5) Palestine, or the Holy Land (6) Ancient Jerusalem (7) Travels of the Apostles Paul, 3 feet 6 inches by 4 feet 4 inches | 4 00 |
| or, divided in four separate maps, each | 1 25 |

Two and a half Buses, March, 1873.

II IRISH NATIONAL MAPS

1 Large Modern Maps

| | | | |
|--------------------------|-------|---------------|-------|
| World outline (Globe) | 84 00 | Scotland | 84 00 |
| World outline (Mercator) | 7 00 | France, Ocean | 7 00 |
| England | 3 00 | Australia | 3 00 |
| Ireland | 1 00 | India | 1 00 |

2 Small Modern Maps

| | | | |
|------------------|-------|-----------------|-------|
| World (Globe) | 82 50 | England | 81 50 |
| World (Mercator) | 2 50 | Ireland | 1 50 |
| Europe | 1 50 | Scotland | 1 50 |
| Asia | 1 50 | E. India | 1 50 |
| Africa | 1 50 | Australia | 1 50 |
| America | 1 50 | Pacific Ocean | 1 50 |
| North America | 1 50 | Palestine | 1 50 |
| South America | 1 50 | Scripture World | 1 50 |

3 Large Ancient Maps

| | | | |
|-----------------------------|-------|--------------------|-------|
| Orbis Veteribus Notus | 85 00 | Asia Minor Antiqua | 81 75 |
| Ancient or Scriptural World | 3 00 | India Antiqua | 3 00 |
| Terra Sancta | 1 75 | Græcia Antiqua | 3 00 |

III W & K JOHNSTON'S MAPS

1 Large Modern Maps

| | | | |
|-----------------------------|-------|--------------------|-------|
| Outline Chart of the World | 82 00 | India | 82 50 |
| Skeleton Map of the World | 7 00 | Spain and Portugal | 2 50 |
| Commercial World (Mercator) | 12 00 | Australia | 2 50 |
| World (Mercator) | 2 50 | British Ocean | 2 50 |
| General Europe | 8 00 | New Zealand | 2 50 |
| Central Europe | 2 50 | | |
| France | 2 50 | | |

2 Small Modern Maps

| | | | |
|--------------------|-------|---------------|-------|
| Eastern Hemisphere | 81 50 | United States | 81 50 |
| Western Hemisphere | 1 50 | British Isles | 1 50 |
| World (Mercator) | 1 50 | England | 1 50 |
| Europe | 1 50 | Ireland | 1 50 |
| Asia | 1 50 | Scotland | 1 50 |
| Africa | 1 50 | Palestine | 1 50 |
| America | 1 50 | | |

3 Large Ancient Maps

| | | | |
|-----------------------|-------|--------------------|-------|
| Orbis Veteribus Notus | 82 50 | India Antiqua | 82 50 |
| Græcia Antiqua | 2 50 | Asia Minor Antiqua | 2 50 |
| | 2 50 | | 2 50 |

IV W & R CHAMBERS' MAPS

| | | | |
|----------------------|-------|-----------------|-------|
| World, with Diagrams | 81 00 | America (South) | 83 00 |
| Europe | 3 00 | England | 3 00 |
| Asia | 3 00 | Ireland | 3 00 |
| Africa | 3 00 | Scotland | 3 00 |
| America (North) | 3 00 | Palestine | 3 00 |

*These Maps are double outline, and have the name on them very small.

V LONDON CHRISTIAN KNOWLEDGE SOCIETY'S MAPS

| | | | |
|-------------------|-------|--------------------------------|-------|
| Europe | 84 00 | Scotland | 84 50 |
| Asia | 3 00 | Ireland | 4 50 |
| North America | 3 00 | The Assyrian and other Empires | 1 50 |
| South America | 2 00 | Holy Land (New Testament) | 2 00 |
| England and Wales | 3 50 | Holy Land (Old Testament) | 2 00 |

VI DAY AND SON'S MAPS.

| | |
|---|-------|
| Orthographic Projection of the World of the Antipodes | 86 00 |
| World of the Antipodes | 86 00 |
| American Sub-marine Chart | 4 10 |

VII PHILLIPS' SCHOOL ROOM MAPS.

1 Large Modern Maps.

| | | | |
|--------------------------|-------|---------------|-------|
| The World in Hemispheres | 86 25 | South America | 84 00 |
| Physical Europe | 4 00 | Australia | 3 00 |
| Physical America | 4 00 | England | 3 00 |
| Europe | 3 00 | Ireland | 3 00 |
| Asia | 3 00 | Scotland | 3 00 |
| Africa | 3 00 | British Isles | 3 00 |
| North America | 3 00 | | |

2. Small Maps (Ancient and Modern.)

| | | | |
|--------------------|-------|---|-------|
| Eastern Hemisphere | 81 50 | Ireland | 81 50 |
| Western Hemisphere | 1 50 | Scotland | 1 50 |
| Europe | 1 50 | Australia | 1 50 |
| Asia | 1 50 | Palestine | 1 50 |
| Africa | 1 50 | Historical, Historical and Scriptural Maps, illustrating the Ancient Classics, Historians and Poets, each | 1 00 |
| North America | 1 50 | | |
| South America | 1 50 | | |
| England | 1 50 | | |

VIII VARTY'S MAPS.

| | | | |
|----------------------|-------|---------------------------------------|-------|
| Physical Europe | 85 50 | Plan of Jerusalem | 81 25 |
| Hindostan | 3 25 | Chart of our Lord's Life and Ministry | 3 75 |
| Brown Atlas | 1 50 | Palmer's Ancient Palestine | 2 50 |
| Acts of the Apostles | 1 25 | | |

Outline Maps.

| | | | |
|---------|-------|--------------------------------|-------|
| World | 81 75 | England | 81 00 |
| India | 1 00 | Ireland | 1 00 |
| Asia | 1 00 | Scotland | 1 00 |
| Africa | 1 00 | Palestine | 1 00 |
| America | 1 00 | Palmer's S. America and Africa | 3 50 |

IX. WHYTE'S MAPS.

| | | | |
|-----------------|-------|-----------|-------|
| Southern Europe | 84 75 | Hindostan | 81 50 |
|-----------------|-------|-----------|-------|

X.-GUYOT'S MAPS.

| | | | |
|----------------------|-------|-----------------------|-------|
| Manual North America | 86 50 | Geographical Elements | 86 50 |
| Manual South America | 6 50 | | |

XI. MISCELLANEOUS PHYSICAL MAPS.

| | | | |
|----------------------------------|-------|--|-------|
| Johnston's Physical Globe | 82 50 | Smith's Mountains and Rivers | 81 50 |
| Johnston's Physical Europe | 2 50 | Smith's Pictorial Geography | 3 00 |
| Johnston's Physical Asia | 2 50 | Reynold's Geographical Diagrams | 4 00 |
| Johnston's Physical Africa | 2 50 | Reynold's World (Chronology) | 2 00 |
| Johnston's Physical America | 2 50 | Reynold's River Systems, &c. | 2 00 |
| Johnston's Geographical Cosmos | 1 50 | Reynold's Mountain Chains, &c. | 2 00 |
| C. K. See's World of Climatology | 1 50 | Reynold's Assembling Kingdoms | 1 50 |
| C. K. See's Physical Geography | 2 25 | Reynold's View of Nature in all Climates | 1 50 |
| Smith's Principal Rivers | 1 50 | Reynold's Geognostic Profiles | 1 50 |
| Smith's Principal Mountains | 1 50 | Atlas form | 1 25 |

II. CANADIAN ROTARY MAP STANDS AND CASES.

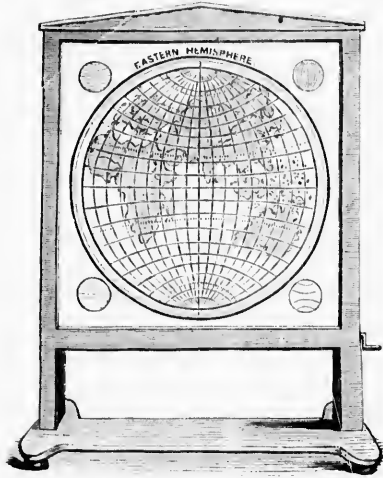
The Maps measure 4 feet 2 inches by 3 feet 6 inches; the stand is 6 feet 9 inches high by 4 feet 8 inches broad. Price \$36.

4. Large Rotary Map Stand Canada Series No. II.

(Ten Maps, mounted the same as the preceding.)

| | | |
|---------------------|-------------------|-----------------|
| France and Portugal | India. | India Antiqua. |
| Central Europe. | Mercator's World. | Græcia Antiqua. |
| Italy. | Orbis Romanus. | Australia. |

The Maps measure 4 feet 2 inches by 3 feet 6 inches; the stand is 6 feet 9 inches high by 4 feet 8 inches broad. Price \$36, or for the two stands \$71.



CANADIAN ROTARY MAP STAND, FIG. 6.

1. Canadian Rotary Map Stand—National Series—No. I.

The stand is mounted on castors, and contains nine coloured maps on a continuous web of cloth, which revolves vertically, over rollers, by turning the handle at the side, so that the maps are exhibited in rotation. An outside cover of oak paper contains the following list of maps:

| | | |
|----------------|------------------|------------------------|
| United States. | Australia. | Orbis Veteribus Notus. |
| Europe. | Pacific Ocean. | Græcia Antiqua. |
| Asia. | Scripture World. | India Antiqua. |

The Maps measure 5 feet 5 inches by 4 feet 4 inches. The stand is 6 feet 10 inches high by 6 feet broad, with blackboard behind for arithmetic or diagrams. It can be taken to pieces, packed, and sent with safety to any part of the country. Price \$36.

2. National Series No. II.

(This is mounted in the same style as No. 1.)

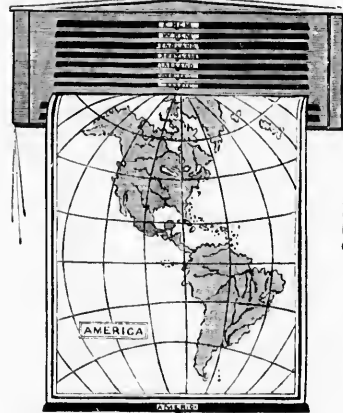
| | | |
|---------------------|-----------|-------------|
| Eastern Hemisphere. | England. | India. |
| Western Hemisphere. | Ireland. | Palestine. |
| America. | Scotland. | Asia Minor. |

The Maps measure 5 feet 6 inches by 4 feet 4 inches; the stand is 8 feet 4 inches by 4 feet 8 inches broad. Price \$38, or for the two stands \$72.

3. Large Rotary Map Stand—Canada Series No. I.

(Ten Maps mounted same as the National Series.)

| | | |
|---------------------|---------------------------|------------------------|
| Eastern Hemisphere. | Africa. | Orbis Veteribus Notus. |
| Western Hemisphere. | America. | Canaan and Palestine. |
| Europe. | British Isles (national). | Or some other Maps. |
| Asia. | Physical Europe. | |



MAP IN CASE, FIG. 7.

5. Small Rotary Map Stand Johnston's Series—No. I.

| | | |
|---------------------|----------|-----------------------|
| Eastern Hemisphere. | Africa. | Ireland. |
| Western Hemisphere. | America. | Scotland. |
| Europe. | England. | Canaan and Palestine. |
| Asia. | | |

Or some other Maps.

The Maps measure 2 feet 9 inches by 2 feet 3 inches; the stand is 6 feet high by 3 feet 2 inches broad. Price \$25.

6. Set of Large Maps in Case—Canada Series No. I.

The case for hanging on the wall contains 10 Coloured Maps on Cloth and Rollers, and is so constructed that any Map can be drawn down as required, and pulled up again by the cords at the side.

| | | |
|---------------------|---------------------------|------------------------|
| Eastern Hemisphere. | Africa. | Orbis Veteribus Notus. |
| Western Hemisphere. | America. | Canaan and Palestine. |
| Europe. | British Isles (national). | Or some other Maps. |
| Asia. | Physical Europe. | |

The Maps measure 4 feet 2 inches by 4 feet 6 inches; the case is 4 feet 8 inches long by 4 feet 6 inches high; and, as it is only 4 inches thick, it projects very little from the wall. It can be packed and sent with safety to any part of the country. Price \$26.

Each Map mounted same case as No. 1.
 France India Africa Antiqua
 Spain Mexico W. India Greece Antiqua
 Central Europe Cuba Oceania Australia
 Italy
 The Maps measure 4 feet 2 inches by 3 feet 6 inches, the case is 4 feet 2 inches long by 1 foot 6 inches high. Price \$20.

Eastern Hemisphere Africa
 Western Hemisphere Asia
 Europe Asia and
 Palestine
 Size of the Maps, 34 by 27 inches. Set in 1 case. Cost 3 inches for 11 feet 6 inches. Price \$10. Single Maps \$1.00 each.

III. CHRONOLOGICAL AND GENEALOGICAL CHARTS, &c

Mounted on Canvas and Rollers

| | | | |
|---|--------|--|--------|
| Earle's Ancient History, with Hand Book | \$1.50 | Gall and Inglis' Sovereigns of Great Britain | \$1.75 |
| Morrison's Chart of Ancient History | 2.00 | Earle's Sovereigns of England | 1.50 |
| Reynolds' Universal History, or Stream of Time | 1.00 | Smith's Kings and Queens of England | 1.00 |
| Smith's Stream of Time | 3.50 | Reynolds' Chart of the Sovereigns of England | 1.00 |
| Robertson's Contemporary History | 2.50 | Maitland's Royal Family of Great Britain | 1.50 |
| Nesbitt's Chronometrical History of England | 9.00 | 1 Non-Jack and Royal Standard explained | 1.25 |
| Gall and Inglis' Chrono-Genealogical British Sovereigns | 1.00 | Calendar of the XIX. Century | 1.00 |

IV. MODERN GLOBES.



GLOBE WITH LOW STAND. FIG. 8.



GLOBE WITH HIGH STAND. FIG. 9.



SOLAR TELLURIC GLOBE. FIG. 10.

I. Globes with High Stands.

Note. Packing Boxes for Globes from 30 cts. to \$1.50 each.

| | |
|---|---------|
| 12 inch Terrestrial Globe, handsome bronze pedestal stand with quadrant | \$29.00 |
| 12 inch Celestial Globe, do. do. per pair | 39.00 |
| 18 inch Terrestrial Globe, bronze stand, with compass and quadrant | 50.00 |
| 18 inch Celestial Globe, bronze stand, do. do. per pair | 98.00 |
| 18 inch Blackboard Drawing Globe, bronze pedestal stand | 21.00 |

II. Globes with Low Stands.

Note. Packing Boxes for Globes from 30 cts. to \$1.50.

| | |
|---|-------|
| 12 inch Terrestrial Globe, handsome bronze stand, with quadrant | 11.00 |
| 12 inch Celestial Globe, do. do. do. do. per pair | 27.00 |

| | |
|--|---------|
| 18 inch Terrestrial Globe, bronze stand, with quadrant | \$38.00 |
| 18 inch Celestial Globe, do. do. do. do. per pair | 54.00 |
| 18 inch Terrestrial Globe, walnut stand, with quadrant | 65.00 |

III. Various Globes.

Note. Packing Boxes for Globes from 30 cts. to \$1.50 each.

| | |
|--------------------------------------|--------|
| 6 inch Globe, walnut stand | \$1.50 |
| 6 inch semi frame Globe, metal stand | 2.00 |
| 6 inch Globe, on movable stand | 2.00 |
| Solar Telluric Globe | 7.00 |
| 3 inch Hemisphere Globe | 0.75 |
| Key to the use of Globes | 1.00 |
| Key to the use of Globes | 0.75 |

V. NATURAL HISTORY. CHARTS, CABINETS, OBJECT LESSONS, &c.

1. Physiology, &c.

| | |
|---|---------|
| Marshall's Anatomical and Physiological Diagrams, set of nine | \$75.00 |
| Johnston's Anatomical and Physiological Charts, set of two | 5.00 |
| Hawkins' Comparative View of the Human and Animal Frame, Atlas form | 1.95 |
| Griffith's Histories (Inchegeddes used as base), set of two | 2.38 |
| Both's Gymnastic Exercises without Apparatus, on Chart | 1.00 |

2. Zoology.

| | |
|--|---------|
| Patterson's Zoological Diagrams, set of ten | \$20.00 |
| Patterson's Illustrations of Zoology, set of two | 1.15 |
| Hawkins' Extinct Animals, set of six | 12.00 |
| Reynolds' set of Four Zoological Diagrams on one Chart | 3.50 |
| Reynolds' Zoological Map of the World | 2.00 |
| Reynolds' Ethnological Diagrams, (Varieties of the Human Race) | 3.20 |
| Varty's Animal Kingdom at one view, Four Charts | 6.00 |
| Macdunn's Empire of Nature, with Key | 1.38 |
| Christian K. Soc. Comparative Sizes of Animals, coloured | 2.50 |
| Christian K. Soc. Orders and Families of Fishes | 1.50 |
| Christian K. Soc. Orders and Families of Insects | 1.50 |
| Horton's Comparative Sizes of Animals, coloured, each | 1.00 |

Cabinets for Object Teaching and School Museums.

| | |
|--|--------|
| Case showing Bees with section of Honey Comb | \$1.00 |
| Case showing Silkworm, Cocoon, Silk, &c. | 2.00 |
| Typical case of Canadian Birds, for teaching Ornithology, from \$12 to \$30 | 30.00 |
| Stuffed Birds, illustrative of the separate orders, from \$1.50 each to \$3.00 | 3.00 |
| Case containing Birds, illustrating External Anatomy, \$1.50 to \$3.00 | 3.00 |
| Various Objects Lessons on specimens of plants | 5.75 |
| Collection of 20 shells, illustrating Geology | 0.80 |

Object Lessons on Sheets and Mounted

| | |
|---|---------|
| Natural History Object Lessons, small print, set of 210, plain in sheets | \$40.00 |
| Natural History Object Lessons, set of 210, coloured, in sheets, 88 1/2 mounted on card board, 85 cts. each, mounted on canvas stretchers | 50.00 |
| Natural History, set of 18, large print, coloured, 10 sheets \$1, mounted on card board \$1.50, on stretchers | 6.00 |
| Scripture Object Lessons, set of 24, large print, coloured, in sheets \$1.50, mounted on card board, 85 cts. mounted on stretchers | 7.00 |
| Natural History, coloured, with Alphabet and easy Reading, set of 15 on card board | 5.50 |

3. Botany.

| | |
|--|--------|
| Reynolds' set of Six Botanical Diagrams on one Chart | \$3.75 |
| Reynolds' Botanical Map of the World | 2.00 |
| Johnston's Botanical Charts, set of four, with hand books | 10.00 |
| Christian K. Soc.'s Botanical Diagrams, 20 sheets, with key | 1.25 |
| Christian K. Soc.'s Poisonous Plants, set of 44 sheets | 1.00 |
| Christian K. Soc.'s Forest Trees, 12 sheets, \$1, mounted on card board | 3.00 |
| Christ's Wild Flowers, set of 26 sheets, coloured, \$1.75, on stretchers | 20.00 |

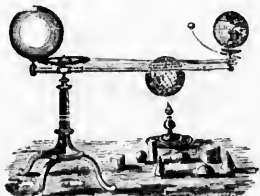
4. Geology and Mineralogy.

| | |
|--|---------|
| Johnston's Geological Map of Europe | \$15.00 |
| Smith's Geological Map of British Isles | 1.00 |
| Logan's Geological Map of Canada | 20.00 |
| Reynolds' set of three Geological Diagrams, large size, coloured | 6.00 |
| Reynolds' Geological Chart, uses in the Arts, &c. | 1.00 |
| Reynolds' Geological and Volcanic Map | 2.00 |
| Reynolds' Geological Section of the Earth's Crust | 2.00 |
| Calverts' Minerals and Metals, from \$2 to \$5 | 2.00 |
| Collection of Minerals and their uses, 50 cts. to \$1.00 | 10.00 |
| Collection of time Minerals and their uses, from 75 cts. to \$1.75 | 1.75 |
| Collection of Minerals for testing hardness | 3.75 |
| Cabinet of Geological Specimens, from 75 cts. to \$10.00 | 10.00 |

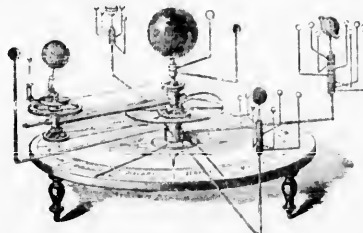
VII PHILOSOPHICAL DIAGRAMS, CHARTS, &c.

| | |
|--|---------|
| Johnston's Philosophical Charts, on Rotary Stand, same as Fig. 6, containing (1) Properties of Bodies; (2) Mechanical Powers; (3) Hydrostatics; (4) Hydraulics; (5) Pneumatics; (6) Physiology; (7) Steam Engines. Price of the seven, with hand books | \$27.50 |
| Johnston's Philosophical Charts, same as above, mounted on canvas and rollers, with hand books, each | 2.50 |
| Johnston's Metric System, 3 feet by 4 feet 2 inches | 4.00 |
| Dr. F. G. Johnston's Philosophical Charts, a series of ten large Charts, with key. (1) Laws of Motion; (2) Mechanical Powers; (3) Pneumatics; (4) Hydraulics, &c.; (5) Optics; (6) Optics; (7) Steam Engines; (8) Astronomy; (9) Astronomy; (10) Magnetism, &c. | 20.00 |
| Chambers' Scientific Charts of Natural Philosophy (1) Matter and Motion; (2) Mechanics; (3) Mechanics. On rollers, each | 1.00 |
| Matern's French Lithographs of Steam Engine, Locomotive, Water Wheels, Hydraulic Press, Hydraulics, &c., beautifully coloured, each | 4.50 |
| Gas Works, 6 feet by 3 feet, coloured, canvas and rollers | 1.38 |
| Glass House, about 4 ft. by 3 ft., finely coloured, on canvas, &c. | 1.00 |
| Iron Furnace, about 4 feet by 3 feet, finely coloured, on canvas | 80.55 |
| Gas Works, as above, mounted on linen, without rollers | 1.20 |
| Reynolds' Philosophical Diagrams (1) Matter and Motion; (2) Mechanical Powers; (3) Hydrostatics; (4) Pneumatics; (5) Pneumatics; (6) Optics; (7) Electricity; (8) Magnetism. Per set | 11.00 |
| Reynolds' Diagrams of Machinery, &c. (1) Electric Telegraph; (2) Manufacturing of Iron; (3) Manufacture of Coal Gas; (4) Paper Making Machine; (5) Printing Machine; (6) Fire Engine; (7) Threshing Machine; (8) Flour Mill; (9) Principle of the Watch; (10) Mechanism of the Clock; (11) Distilling; (12) Gas Meters; (13) Barometer and its uses; (14) Steam Engine, &c., on canvas, rollers, and varnished, each | 1.50 |
| Brown's Geometrical Diagrams on Chart | 1.50 |
| Reynolds' set of Four Geometrical Diagrams on one Chart | 2.75 |
| Chambers' Geometrical Diagrams on Chart | 1.00 |
| Chambers' English's Properties, set of 20 large sheets | 1.00 |
| Simpson's Diagram, showing Harmony of Colon | 1.50 |
| Simpson's Diagram on the Harmonious Relations of Colour | 0.20 |

VII ASTRONOMICAL APPARATUS, CHARTS, &c.



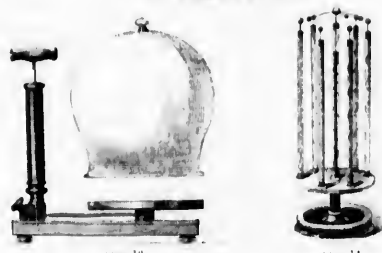
TELLURIAN GLOBE, GEOMETRICAL FORMS, ETC. FIG. 11



ORRERY OR PLANETARIUM, LOW STAND. FIG. 12

| | |
|---|---------|
| London Sheet, 1/2 inch, 1/2 inch, 1/2 inch, 1/2 inch, 1/2 inch | \$12.50 |
| Swiss Planograph, Price \$10.00 | 10.00 |
| Improved Conical Stages, with hand central drive | 12.00 |
| Tollman's for distributing the heat of the Sun, Moon and Earth to each other. Price \$8.00 | 8.00 |
| Matteson's Astronomical Maps, on 1 sheet of charts. Size of Maps, 4 feet by 3 feet. Price of 16, mounted on rollers, price \$16.00, mounted on canvas and rollers | 25.00 |
| Smith's set of six Astronomical Diagrams, mounted on one chart | 3.50 |
| Drew's Astronomical Charts, 12 Diagrams, mounted | 24.00 |
| C. K. See's Astronomical Diagrams, Atlas form | 1.50 |
| Reynolds set of six Astronomical Diagrams on one chart | 1.00 |

VIII. PNEUMATICS.



| | |
|---|---------|
| Air Pump, No. 1, barrel 7 1/2 by 2 inches; plate 8 inches; on walnut stand, well finished. Without bell glass | \$22.00 |
| Air Pump, No. 2, barrel 7 1/2 by 2 inches; on walnut stand, plate 8 inches. Without bell glass | 12.50 |
| Swelled Bell Glasses, Open Top Bell Glasses, and Bell Glasses with screw caps to receive a stopcock, &c., from one to four gallons various prices | |
| Hemispherical Cups, with stop-cocks, handles and stand | 6.00 |
| Stand, Lever and Fulcrum, used with Hemispherical Cups | 5.00 |
| Freezing Apparatus for Air Pumps, Bell glass and pan for acid | 1.00 |
| Revolving Jet, for condensing Air Fountain, \$1.20 and | 2.20 |
| Gutta and Feather Apparatus, with receiver, \$8.10 and | 12.00 |
| Sinking Bell, with Packing Screw, for experiments with Air Pump | 2.25 |
| Cartesian Bottle, with glass jar | 1.00 |
| Baculus Experiment, for transfer of liquids under Air Pump | 0.40 |
| Standard Wheel, Aneroid and other Barometers, from \$8.00 to | 72.00 |

A list of additional Pneumatic Apparatus will be sent on application.

IX. ELECTRICITY.

| | |
|---|----------|
| Electrical Machines; plate 20 inches; prime conductor 36 by 5 inches, mahogany, base 5 inches by 4 feet | \$105.00 |
| Electrical Machine; plate 12 inches; prime conductor 12 by 3 inches, mahogany base | 18.00 |
| Spiral Spotted Tube, with Brass Ends, \$6.00 and | 8.00 |
| Spiral Spotted Tubes, set of six, with centre insulated pillar, and reed wire discharger, mounted on mahogany stand | 24.00 |
| Insulating Stand, without top, with four glass legs | 2.75 |
| Electrical Trough or Tefirium, \$1.50 and | 3.50 |
| Electrical Insulated Plate, mounted on insulated stand | 2.00 |
| Aurora Borealis Apparatus | 2.00 |
| Thunder House, illustrating the Lightning Rod, \$1.00 | 1.00 |
| Electrical Gas Pistol, with Brass Barrel | 1.25 |
| Universal Electrical Discharger, with insulated stand | 0.50 |
| Jointed Dischargers, from \$2.25 to | 1.50 |
| Diamond or Luminous Jars | 3.75 |
| Electrical Spectrometer, Leyden Jars, Insulated Stands, Electrometers, Tin Foil, Dated Gold, Amalgam and other Electrical Apparatus at various prices | |

X. MAGNETISM, GALVANISM, &c.

| | |
|---|---------|
| Morse's Telegraph clock work, key and paper reel | \$45.00 |
| English Telegraph Model, with signs, \$5.00 and | 3.00 |
| A Receiver, for use with the Electric Telegraph Model, and other galvanic experiments | 5.40 |
| Double Beam Voltaic Engine | 20.00 |
| Daniell's, Smee's, Grove's, and Charcoal Batteries, at various prices | |
| Apparatus for the decomposition of water, \$1.00 and | 3.00 |
| Electro-Magnetic Machines, each, \$6.00, \$7.50 and | 9.50 |
| Thomson's Electro-Magnetic Swells | 2.00 |
| Electro-Magnets and Keepers, various prices | |
| Electro-Magnetic Coils, in boxes, complete, various prices | |
| 1/2 Sec. Steel Magnets, with Armatures, various prices | 2.50 |
| Collection of objects to illustrate Magnetism | |
| Magnetic Toys - ships, fish, swan, &c., in boxes, various prices | |
| An additional list sent on application. | |

XI. CHEMICAL LABORATORIES, GLASSWARE, &c.

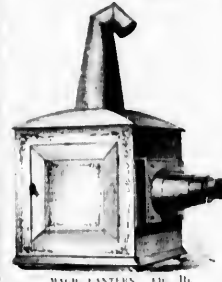
| | |
|---|---------|
| 1. Chemical Diagrams. | |
| Reynolds set of six Chemical Diagrams, on one Chart | \$1.00 |
| Yonman's Chemical Chart and Book | 6.00 |
| 2. Griffin's Chemical Laboratories. | |
| Chemical Laboratories, in Portable Cabinets, containing Apparatus and Preparations for a course of Elementary Experiments. Packed by the publishers, and sold in pieces. Price, \$1, \$1.50, \$8, \$10, \$12.50 and \$15 each. | |
| 3. Statham's Chemical Cabinets. | |
| Similar to the foregoing (Nagetti and Zander's). Packed by the publishers, and sold in pieces. Prices, \$5.50, \$8, \$11, \$17, and \$14 each. | |
| 4. Chemical Glassware, &c. | |
| Hydrogen Balloons of gold beater's skin, from | \$1.00 |
| India Rubber Gas Bags, with stop-cocks, from | 1.00 |
| Plain and Tubulated Retorts, from 25 cts. to | 1.00 |
| Pneumatic Troughs, Glass Funnel, Gas Jars, Spirit Lamps, Woulff's Bottles, Test Tubes, Test Tube Stands, Retort Stands, Funnel Holders, Florence Flasks, Hydrophobic Glass, Hygrometers, Condensing Tubes, India Rubber Tubing, &c., including all the necessary glassware for chemical experiments, at various prices. | |
| Laboratories for Agricultural and Experimental Chemistry, containing all the necessary Apparatus for performing the experiments referred to in the authorized Text Books, can be put up at the Depository, to suit the size and requirements of class. Various prices. | |
| XII. STEAM AND HEAT. | |
| Sectional Model of Steam Engines, from \$13 to | \$28.00 |
| Working Models of Steam Engines, with Spirit Lamp, \$1.50 | 5.00 |
| Working Model of Locomotive, with Spirit Lamp | 12.00 |
| Four Steam Engines, with Fuel | 0.50 |
| Diagrams of Steam Engines, see Philosophical Diagrams (No. VI). | |
| Pneumeters, Manometers, Thermometers, &c., at various prices. | |
| XIII. HYDROSTATICS AND HYDRAULICS. | |
| Models of Forcing and Lifting Pumps, various prices. | |
| Models of Water Wheels, overshot, &c. | \$10.00 |
| Archimedes Screw Pump, with Stand | 5.00 |
| Centrifugal Pumps, Heron's Fountain, Barker's Mill, &c., at various prices. | |

The brass geared Tefirium, manufactured under the direction of the Editor. The instrument, is made to revolve by means of a set of brass wheels, which is not so liable to get out of order as the instrument with the iron.

XIV. MECHANICS.

| | |
|--|---------|
| Mechanical Powers, with weights, pulleys, &c. No. \$17 and | \$28.50 |
| Best Lever, with weights and description | 1.50 |
| Train of Spur Wheels - simple | 0.00 |
| India Apparatus, with fuel | 0.00 |
| Centre of Gravity Apparatus, per set | 1.20 |
| Centrifugal Machines, with apparatus for illustrations | 0.75 |
| Collision Balls, complete | 3.50 |
| Working Model of the Screw | 1.50 |
| Working Model of a Lock with Key | 1.50 |

XV. MAGIC LANTERNS, &c.



| | |
|--|--|
| No. 1. Dissolving View Apparatus, including two Phantasmagoria Lanterns with 4 1/2 inch improved condensing lenses, brass front and dissolving slides, or in box which is used as a stand, also Occulorum Light Apparatus, consisting of Fountain Spirit Lamp, India Rubber Gas Bag, Pressure Boards, reflect and purifier for making the rays flexible tubing and box of lamp cylinders. Price, \$85. | |
| No. 2. Dissolving View Apparatus, including two Phantasmagoria Lanterns and Brass dissolver, same as No. 1, with Fountain of Solar Lamp for use instead of the Gas Apparatus. Price, \$60. | |
| No. 3. Phantasmagoria Lantern, single same as No. 1 and 2, with Occulorum Light Apparatus. | |
| No. 4. Phantasmagoria Lantern, with pair of 4 1/2 inch improved condensing lenses, brass front and Fountain of Solar Lamp, \$17.50. | |
| No. 5. Phantasmagoria Lantern, with pair of 3 inch condensing lenses, brass front and best Fountain Lamp, \$13.50. | |
| No. 6. Phantasmagoria Lantern, with pair of 3 inch condensing lenses, brass front and Tin Argand Lamp, \$12.50. | |
| No. 7. Magic Lantern, with 3 1/2 inch lenses, brass front and Tin Argand Lamp, \$11.50. | |
| No. 8. Magic Lantern, 3 inch lenses, brass front and Tin Argand Lamp, with box of 12 long amusing slides, \$12.50. | |
| No. 9. Magic Lantern, 3 inch lenses and brass sliding front, with box of 12 long amusing slides, \$8. | |
| No. 10. Magic Lantern, 2 1/2 inch lenses and brass sliding front, with box of 12 long amusing slides, \$7. | |
| No. 11. Magic Lantern, 2 inch lenses and brass sliding front, with box of 12 long amusing slides, \$5. | |

Magic Lantern Slides.

1. Fourteen inch Astronomical Diagrams, on slides, showing the position, size and principal phenomena of the solar system, suitable for lanterns 1 to 7, per box, from \$10 to \$27.
2. 12 inch Astronomical slides, suitable for lanterns 5 to 7, \$8.
3. 1 1/2 inch Natural History, for lanterns 1 to 7, per box, \$8 to \$12.
4. 12 inch Natural History, for lanterns 5 to 7, per box, \$5.50 to \$6.50
5. Scripture History, beautifully coloured, suitable for lanterns 1 to 7, from \$2.50 to \$8.50.
6. Paintings of celebrated buildings, English views, Ruins and Abbeys, India, China, Arctic Regions, Russian War, Holy Land, Egypt, Missionary Scenes, Natural Phenomena, &c., suitable for lanterns 1 to 7, from \$1.50 to \$2.50.
7. Photographs of Scripture History, Statuary, Celebrated places, Natural Phenomena, Geology, Hogarth's Pictures, &c., plain, \$1.50 to \$2 each; beautifully coloured, suitable for lanterns 1 to 7, from \$2.20 to \$3.75 each.
8. Views with moving shipping, suitable for lanterns 1 to 7, \$2.25 to \$3 each.
9. Panoramic views, new style, suitable for lanterns 1 to 7, \$3.75 each.
10. Drunken's Progress, [crank-shank-foot of 8 slides, for lanterns 1 to 7, \$12 to \$25 per set.
11. Lever and Back-work, slides for lanterns 1 to 7, \$1.75 to \$2.50 each.
12. Pilgrim's Progress, set of 12 pictures, for lanterns 1 to 7, \$10 to \$30.
13. Chromatopes, or artificial fire works, suitable for lanterns 1 to 7, \$2.50 to \$3.75 each.
14. War in Abyssinia, set of 12 slides, for lanterns 1 to 7, \$17.
15. Life of Joseph, set of 12 slides, for lanterns 1 to 7, \$13.
16. Robinson Crusoe, set of 6 slides, suitable for lanterns 1 to 7, \$6 to \$10.
17. Amusing slides, set of 12 in a box, for lanterns 1 to 7, \$6 to \$10.
18. Pusey's Road to Ruin, set of four, for lanterns 1 to 7, \$4.00.
19. Movable comic and other slides, for lanterns 1 to 7, \$5c. to \$1.
20. Zoological slides, set of 12, suitable for lantern No. 8, \$1 to \$2.
21. Amusing slides, set of 12, suitable for lantern No. 8, \$1 to \$2.25.

XVI. MICROSCOPES, TELESCOPES, &c.

| | |
|--|---------|
| Compound School Microscope, on firm tripod stand, with two object glasses, &c., in upright polished cabinet with drawer, from \$14 to | \$30.00 |
| Compound Microscope, in mahogany box, from \$2.40 to | 6.00 |
| Simple Microscopes, with rack movement, mirrors, Micro-powers, tweezers, glass slides, and two objects in mahogany case | 3.50 |
| Best Preparations, mounted in Balsam or fluid, various prices. | |
| Neatly mounted objects for beginners, on slides, (assorted insects, vegetable and other preparations). From 60c. per dozen | |
| Astronomical Telescopes, mounted on brass tripod stand, packed in Mahogany case. Various prices. | |
| Achromatic Telescopes, with two or three drawers. Various prices. | |
| Models of the Human Eye, in three parts, viz: (1) The Eyeball dissected, with stand; (2) The Muscles of the Eye; (3) The Cause of Long, Short and Imperfect sight. | 14.50 |
| Set of Seven Mirrors, mounted to resemble the seven prismatic colours, and recompose white light | 11.50 |

XVII. TABLET READING LESSONS, &c.

| | |
|--|--------|
| Tablet Reading Lessons (1st Book), sheets, 75 cts., mounted on card-board (both sides); \$2, ditto varnished \$4, mounted on card board (one side) varnished | \$6.00 |
| Geographical Lesson Sheets to accompany maps, 50 cts., mounted on card board, varnished | 3.50 |
| C. K. See's Scripture Manners and Customs, large print, set of 30 sheets \$1.50, mounted on card board \$6.50, mounted on stretchers | 8.00 |
| C. K. See's Scripture History, large print, set of 23 sheets, \$1.20, mounted on card board \$5.50, mounted on stretchers | 7.00 |
| C. K. See's Scripture Sites, large print, set of 12 sheets 70 cts., mounted on card board \$3, mounted on stretchers | 4.00 |
| C. K. See's Scripture Sites, small print, set of 30 sheets, \$1.13, mounted on card board \$5.00, mounted on stretchers | 7.00 |
| C. K. See's Hymns for Children, 6 sheets | 0.30 |
| Ten Commandments, large size, mounted on canvas and rollers | 0.50 |
| Time Table, mounted on card board | 0.25 |
| Unit Table, mounted on card board | 0.45 |
| Programme of Studies, mounted on card board | 0.30 |
| Duties of Pupils and Teachers, mounted on card board | 0.30 |
| Set of 20 Educational Lesson Sheets, large print, \$1, or mounted on card board, each | 0.30 |
| Honor Roll for Public Schools | 0.75 |
| Honor Roll for High Schools | 0.75 |
| Flat Blackboard, Bristol | 4.50 |
| Blackboard Pointers, 10 cts., 13 cts. and | 0.15 |
| Geometrical Forms and Solids, per box | 2.00 |
| Numerical Frames, each | 0.75 |

Articles on which the 100 per cent. is not allowed.

| | |
|---|------|
| Non-evaporating Metal Ink Wells, per dozen | 3.00 |
| Metal Ink Wells with iron covers, 6 screws on disk, per dozen | 1.50 |
| Liquid Slating for Blackboards; can be used on paper, wood, or plaster, per quart can | 1.50 |
| Chalk Crayons, white and coloured, at various prices. | |

SOME Packing Boxes for 5 crates, &c., from 10 cts. to 75 cts., each

X This set contains Tablets
Tests, bottles &c. from 10

