

PROPERTIES FOR SALE.

JOHN STARK & CO. 26 TORONTO STREET. Real Estate Agents, Valuers, Estates Managed and Rents Collected.

Rosedale Lots For Sale. I have a large number of choice lots in all parts of Rosedale, which at present prices are the best investments in the city. Call for particulars.

- \$80 CHESTNUT ROAD, 75x100. \$80 CHESTNUT ROAD, 75x100. \$80 CHESTNUT ROAD, 75x100. \$80 CHESTNUT ROAD, 75x100. \$80 CHESTNUT ROAD, 75x100.

City Property

- \$60 BLOOR AND ST. CLARENDON, 1842 1/2. \$50 BRUNSWICK AND LOWTHER, 602. \$50 HOWLAND AND LOWTHER, 5031/2.

West Toronto Junction

- \$16 WEST TORONTO STREET, 1024 1/2. \$22 LORRAINE STREET, 482. \$4,000 SHERBOURNE STREET, 1000.

MURDOCH & WILSON

WE OFFER A FEW OF OUR BEST lots, which if wanted, must be taken quick as the present prices they cannot be held.

MURDOCH & WILSON, 98 Victoria-street. Telephone 1812.

- MURDOCH & WILSON, 98 Victoria-street. Telephone 1812. WE OFFER A FEW OF OUR BEST lots, which if wanted, must be taken quick as the present prices they cannot be held.

PROPERTIES FOR SALE

Head of Avenue-road, Best building site in the city for sale. Beautifully situated, nicely wooded with numerous trees.

UPPER CANADA COLLEGE

Head of Avenue-road, Best building site in the city for sale. Beautifully situated, nicely wooded with numerous trees.

PROPERTIES FOR SALE.

ROSEDALE Beautiful lot cor. Dunbar and Hill-streets, 98 feet on Dunbar-road, three frontages, only \$845 per foot. This is the cheapest lot in Rosedale. Only \$1000 down.

I have a large number of choice lots in all parts of Rosedale, which at present prices are the best investments in the city. Call for particulars.

QUEEN-STREET EAST

900 feet opposite Woodbine Park, including several choice corners, \$30 per foot. Street car service every four minutes. Electric lighted. Full particulars on application.

MIMICO

Large block fronting on Grand-ave., Portland-street, Mill-street and Melrose-street, in all 1212 feet, at \$5.50 per foot; easy terms. Property in this locality is rapidly advancing in value.

JOHN J. DIXON

18 King-street East. GEO. FAULKNER 21 Adelaide-st. East. Late Eager & Faulkner.

LAND BROKER AND VALUATOR

- BLOOR-STREET-BLOCK OF ABOUT 800 FEET. BLOOR-STREET-NEAR DUNDAS, \$8. BLOOR-STREET-CORNER ALBANY-AVE. \$100.

COLLEGE-ST. PROPERTY

900 feet frontage on College-street. 2500 feet frontage on Beatrice-street. 1500 feet frontage on Grace-street.

J. B. LEROY & CO.

32 TORONTO-STREET. 869 QUEEN-STREET EAST. Telephone 251, 2095.

W. F. CARRIER, REAL ESTATE AND INSURANCE, 115 KING-STREET EAST.

- W. F. CARRIER, REAL ESTATE AND INSURANCE, 115 KING-STREET EAST. \$15 DUNDAS-ROAD, 100 FEET, N.E. \$24 DUNDAS-ROAD, 100 FEET, N.E.

PROPERTIES FOR SALE.

GENESEE & LLOYD, 430 Spadina-st. 100x100. 100x100. 100x100. 100x100. 100x100.

WILSON PARK TRACT, 100x100. 100x100. 100x100. 100x100. 100x100.

QUEEN-STREET EAST

900 feet opposite Woodbine Park, including several choice corners, \$30 per foot. Street car service every four minutes. Electric lighted. Full particulars on application.

MIMICO

Large block fronting on Grand-ave., Portland-street, Mill-street and Melrose-street, in all 1212 feet, at \$5.50 per foot; easy terms. Property in this locality is rapidly advancing in value.

JOHN J. DIXON

18 King-street East. GEO. FAULKNER 21 Adelaide-st. East. Late Eager & Faulkner.

LAND BROKER AND VALUATOR

- BLOOR-STREET-BLOCK OF ABOUT 800 FEET. BLOOR-STREET-NEAR DUNDAS, \$8. BLOOR-STREET-CORNER ALBANY-AVE. \$100.

COLLEGE-ST. PROPERTY

900 feet frontage on College-street. 2500 feet frontage on Beatrice-street. 1500 feet frontage on Grace-street.

J. B. LEROY & CO.

32 TORONTO-STREET. 869 QUEEN-STREET EAST. Telephone 251, 2095.

W. F. CARRIER, REAL ESTATE AND INSURANCE, 115 KING-STREET EAST.

- W. F. CARRIER, REAL ESTATE AND INSURANCE, 115 KING-STREET EAST. \$15 DUNDAS-ROAD, 100 FEET, N.E. \$24 DUNDAS-ROAD, 100 FEET, N.E.

PROPERTIES FOR SALE.

MURDOCH & WILSON, 98 Victoria-street. Telephone 1812.

WE OFFER A FEW OF OUR BEST lots, which if wanted, must be taken quick as the present prices they cannot be held.

QUEEN-STREET EAST

900 feet opposite Woodbine Park, including several choice corners, \$30 per foot. Street car service every four minutes. Electric lighted. Full particulars on application.

MIMICO

Large block fronting on Grand-ave., Portland-street, Mill-street and Melrose-street, in all 1212 feet, at \$5.50 per foot; easy terms. Property in this locality is rapidly advancing in value.

JOHN J. DIXON

18 King-street East. GEO. FAULKNER 21 Adelaide-st. East. Late Eager & Faulkner.

LAND BROKER AND VALUATOR

- BLOOR-STREET-BLOCK OF ABOUT 800 FEET. BLOOR-STREET-NEAR DUNDAS, \$8. BLOOR-STREET-CORNER ALBANY-AVE. \$100.

COLLEGE-ST. PROPERTY

900 feet frontage on College-street. 2500 feet frontage on Beatrice-street. 1500 feet frontage on Grace-street.

J. B. LEROY & CO.

32 TORONTO-STREET. 869 QUEEN-STREET EAST. Telephone 251, 2095.

W. F. CARRIER, REAL ESTATE AND INSURANCE, 115 KING-STREET EAST.

- W. F. CARRIER, REAL ESTATE AND INSURANCE, 115 KING-STREET EAST. \$15 DUNDAS-ROAD, 100 FEET, N.E. \$24 DUNDAS-ROAD, 100 FEET, N.E.

PROPERTIES FOR SALE.

MURDOCH & WILSON, 98 Victoria-street. Telephone 1812.

WE OFFER A FEW OF OUR BEST lots, which if wanted, must be taken quick as the present prices they cannot be held.

QUEEN-STREET EAST

900 feet opposite Woodbine Park, including several choice corners, \$30 per foot. Street car service every four minutes. Electric lighted. Full particulars on application.

MIMICO

Large block fronting on Grand-ave., Portland-street, Mill-street and Melrose-street, in all 1212 feet, at \$5.50 per foot; easy terms. Property in this locality is rapidly advancing in value.

JOHN J. DIXON

18 King-street East. GEO. FAULKNER 21 Adelaide-st. East. Late Eager & Faulkner.

LAND BROKER AND VALUATOR

- BLOOR-STREET-BLOCK OF ABOUT 800 FEET. BLOOR-STREET-NEAR DUNDAS, \$8. BLOOR-STREET-CORNER ALBANY-AVE. \$100.

COLLEGE-ST. PROPERTY

900 feet frontage on College-street. 2500 feet frontage on Beatrice-street. 1500 feet frontage on Grace-street.

J. B. LEROY & CO.

32 TORONTO-STREET. 869 QUEEN-STREET EAST. Telephone 251, 2095.

W. F. CARRIER, REAL ESTATE AND INSURANCE, 115 KING-STREET EAST.

- W. F. CARRIER, REAL ESTATE AND INSURANCE, 115 KING-STREET EAST. \$15 DUNDAS-ROAD, 100 FEET, N.E. \$24 DUNDAS-ROAD, 100 FEET, N.E.

PROPERTIES FOR SALE.

MURDOCH & WILSON, 98 Victoria-street. Telephone 1812.

WE OFFER A FEW OF OUR BEST lots, which if wanted, must be taken quick as the present prices they cannot be held.

QUEEN-STREET EAST

900 feet opposite Woodbine Park, including several choice corners, \$30 per foot. Street car service every four minutes. Electric lighted. Full particulars on application.

MIMICO

Large block fronting on Grand-ave., Portland-street, Mill-street and Melrose-street, in all 1212 feet, at \$5.50 per foot; easy terms. Property in this locality is rapidly advancing in value.

JOHN J. DIXON

18 King-street East. GEO. FAULKNER 21 Adelaide-st. East. Late Eager & Faulkner.

LAND BROKER AND VALUATOR

- BLOOR-STREET-BLOCK OF ABOUT 800 FEET. BLOOR-STREET-NEAR DUNDAS, \$8. BLOOR-STREET-CORNER ALBANY-AVE. \$100.

COLLEGE-ST. PROPERTY

900 feet frontage on College-street. 2500 feet frontage on Beatrice-street. 1500 feet frontage on Grace-street.

J. B. LEROY & CO.

32 TORONTO-STREET. 869 QUEEN-STREET EAST. Telephone 251, 2095.

W. F. CARRIER, REAL ESTATE AND INSURANCE, 115 KING-STREET EAST.

- W. F. CARRIER, REAL ESTATE AND INSURANCE, 115 KING-STREET EAST. \$15 DUNDAS-ROAD, 100 FEET, N.E. \$24 DUNDAS-ROAD, 100 FEET, N.E.

PROPERTIES FOR SALE.

MURDOCH & WILSON, 98 Victoria-street. Telephone 1812.

WE OFFER A FEW OF OUR BEST lots, which if wanted, must be taken quick as the present prices they cannot be held.

QUEEN-STREET EAST

900 feet opposite Woodbine Park, including several choice corners, \$30 per foot. Street car service every four minutes. Electric lighted. Full particulars on application.

MIMICO

Large block fronting on Grand-ave., Portland-street, Mill-street and Melrose-street, in all 1212 feet, at \$5.50 per foot; easy terms. Property in this locality is rapidly advancing in value.

JOHN J. DIXON

18 King-street East. GEO. FAULKNER 21 Adelaide-st. East. Late Eager & Faulkner.

LAND BROKER AND VALUATOR

- BLOOR-STREET-BLOCK OF ABOUT 800 FEET. BLOOR-STREET-NEAR DUNDAS, \$8. BLOOR-STREET-CORNER ALBANY-AVE. \$100.

COLLEGE-ST. PROPERTY

900 feet frontage on College-street. 2500 feet frontage on Beatrice-street. 1500 feet frontage on Grace-street.

J. B. LEROY & CO.

32 TORONTO-STREET. 869 QUEEN-STREET EAST. Telephone 251, 2095.

W. F. CARRIER, REAL ESTATE AND INSURANCE, 115 KING-STREET EAST.

- W. F. CARRIER, REAL ESTATE AND INSURANCE, 115 KING-STREET EAST. \$15 DUNDAS-ROAD, 100 FEET, N.E. \$24 DUNDAS-ROAD, 100 FEET, N.E.

PROPERTIES FOR SALE.

MURDOCH & WILSON, 98 Victoria-street. Telephone 1812.

WE OFFER A FEW OF OUR BEST lots, which if wanted, must be taken quick as the present prices they cannot be held.

QUEEN-STREET EAST

900 feet opposite Woodbine Park, including several choice corners, \$30 per foot. Street car service every four minutes. Electric lighted. Full particulars on application.

MIMICO

Large block fronting on Grand-ave., Portland-street, Mill-street and Melrose-street, in all 1212 feet, at \$5.50 per foot; easy terms. Property in this locality is rapidly advancing in value.

JOHN J. DIXON

18 King-street East. GEO. FAULKNER 21 Adelaide-st. East. Late Eager & Faulkner.

LAND BROKER AND VALUATOR

- BLOOR-STREET-BLOCK OF ABOUT 800 FEET. BLOOR-STREET-NEAR DUNDAS, \$8. BLOOR-STREET-CORNER ALBANY-AVE. \$100.

COLLEGE-ST. PROPERTY

900 feet frontage on College-street. 2500 feet frontage on Beatrice-street. 1500 feet frontage on Grace-street.

J. B. LEROY & CO.

32 TORONTO-STREET. 869 QUEEN-STREET EAST. Telephone 251, 2095.

W. F. CARRIER, REAL ESTATE AND INSURANCE, 115 KING-STREET EAST.

- W. F. CARRIER, REAL ESTATE AND INSURANCE, 115 KING-STREET EAST. \$15 DUNDAS-ROAD, 100 FEET, N.E. \$24 DUNDAS-ROAD, 100 FEET, N.E.

MANUFACTURERS' LIFE INSURANCE COMPANY.

The third annual general meeting of the Manufacturers' Life Insurance Company was held at the company's office, 52 King-street west, Toronto, on Tuesday, Jan. 11.

On account of the official duties of Ottawa, the president, the Right Hon. Sir John A. Macdonald, was unable to attend.

The first vice-president, Mr. George Gordon, was called upon to occupy the chair, and John F. Ellis, managing director, to act as secretary of the meeting.

At the request of the chairman the secretary read the report, which is as follows:

REPORT. The directors have much pleasure in again presenting the policyholders and shareholders and laying before them a statement of the transactions of the company for the year 1919.

During the year 1919 applications for insurance amounting to \$2,328,300, were received, upon which 1716 policies were issued for \$2,710,000.

On Dec. 31, 1919, the company had 10,000 policies in force, making the total amount of \$27,500,000, making the total amount of \$27,500,000.

The directors would particularly call attention to the large amount of business done during the year 1919, and to the fact that the company has maintained its position as a leading life insurance company in Canada.

The company's financial position is shown in the accompanying statement of capital, and it is believed that the company is in a position to meet all its obligations.

The company's financial position is shown in the accompanying statement of capital, and it is believed that the company is in a position to meet all its obligations.

The company's financial position is shown in the accompanying statement of capital, and it is believed that the company is in a position to meet all its obligations.

The company's financial position is shown in the accompanying statement of capital, and it is believed that the company is in a position to meet all its obligations.

The company's financial position is shown in the accompanying statement of capital, and it is believed that the company is in a position to meet all its obligations.

The company's financial position is shown in the accompanying statement of capital, and it is believed that the company is in a position to meet all its obligations.

The company's financial position is shown in the accompanying statement of capital, and it is believed that the company is in a position to meet all its obligations.

The company's financial position is shown in the accompanying statement of capital, and it is believed that the company is in a position to meet all its obligations.

The company's financial position is shown in the accompanying statement of capital, and it is believed that the company is in a position to meet all its obligations.

SOME NEW YEAR STYLES.

FAVORED FABRICS AND HOW THEY ARE MADE UP.

Descriptions of Typical Tastes Worn by New Yorkers—What Fashion's Victories are Wearing—The Colors of the Season.

Here Fashion, money goddess, changing still, finds ready subjects to obey her will.

Millinery, as in other parts of our costume, now only trained things may be seen.

It is a queer actress in a clever attitude, and to me, we all feel more or less vaguely the truth that the expression of her face is a simplicity, modesty and grace.

BRIMS STILL BROAD. In hats, the broad brim is still the favorite.

Shoos and Agoras. Hats are equally fashionable, with brims turned up in a point.

THE VELVET TIE. The velvet tie is a new and very pretty for children's wear.

THE VELVET TIE. The velvet tie is a new and very pretty for children's wear.

THE VELVET TIE. The velvet tie is a new and very pretty for children's wear.

THE VELVET TIE. The velvet tie is a new and very pretty for children's wear.

THE VELVET TIE. The velvet tie is a new and very pretty for children's wear.

THE VELVET TIE. The velvet tie is a new and very pretty for children's wear.

THE VELVET TIE. The velvet tie is a new and very pretty for children's wear.

THE VELVET TIE. The velvet tie is a new and very pretty for children's wear.

THE VELVET TIE. The velvet tie is a new and very pretty for children's wear.

THE VELVET TIE. The velvet tie is a new and very pretty for children's wear.

SIR JULIAN PAUNCECOTE.

The New British Minister to Washington, and His Family.

Washington is delighted with the new British minister, Sir Julian Pauncecote, and his family.

Washington is delighted with the new British minister, Sir Julian Pauncecote, and his family.

Washington is delighted with the new British minister, Sir Julian Pauncecote, and his family.

Washington is delighted with the new British minister, Sir Julian Pauncecote, and his family.

Washington is delighted with the new British minister, Sir Julian Pauncecote, and his family.

Washington is delighted with the new British minister, Sir Julian Pauncecote, and his family.

Washington is delighted with the new British minister, Sir Julian Pauncecote, and his family.

Washington is delighted with the new British minister, Sir Julian Pauncecote, and his family.

Washington is delighted with the new British minister, Sir Julian Pauncecote, and his family.

Washington is delighted with the new British minister, Sir Julian Pauncecote, and his family.

Washington is delighted with the new British minister, Sir Julian Pauncecote, and his family.

Washington is delighted with the new British minister, Sir Julian Pauncecote, and his family.

Washington is delighted with the new British minister, Sir Julian Pauncecote, and his family.

Washington is delighted with the new British minister, Sir Julian Pauncecote, and his family.

Washington is delighted with the new British minister, Sir Julian Pauncecote, and his family.

Washington is delighted with the new British minister, Sir Julian Pauncecote, and his family.

SITE OF SCIENCE.

In the pursuit of science to test for the cause which produces the dimming effect of haze, there were about 20,000 particles found in each cubic foot.

The new metallic packing for piston rods, permits the rods to wear freely within it, is simple and strong, and may be removed and taken to pieces with ease.

A color test for railway employees has been introduced in the shape of a device consisting of a revolving series of colored glass light-bulbs from which a beam of light is directed through a lens and strikes the lamp of the sign box.

In testing by electricity the ordinary tar liquid is employed, and the liquid revolve through it, while the current from a dynamo turns the vat, and helps it to attain to combine with the gelatine of the skin.

Salt put in water which surrounds the ordinary glue pot causes a better glue to be obtained than when simple water is used.

When Sir J. Herschel was defending the character of astronomical science in view of an error of nearly 400,000 miles in estimating the sun's distance, the error was so small as to be equivalent to the apparent breadth of a human hair at a distance of 100 feet.

A good grease for boots, which is said to be a mixture of olive oil, is a mixture of olive oil and a part of castor-oil (the rubber), which are mixed together on a slow fire, and the mixture is then poured into a tin.

Senator Ingalls has a great weakness for red neckties, and is rarely seen wearing one of a different color.

Senator Ingalls has a great weakness for red neckties, and is rarely seen wearing one of a different color.

Senator Ingalls has a great weakness for red neckties, and is rarely seen wearing one of a different color.

Senator Ingalls has a great weakness for red neckties, and is rarely seen wearing one of a different color.

Senator Ingalls has a great weakness for red neckties, and is rarely seen wearing one of a different color.

Senator Ingalls has a great weakness for red neckties, and is rarely seen wearing one of a different color.

Senator Ingalls has a great weakness for red neckties, and is rarely seen wearing one of a different color.

Senator Ingalls has a great weakness for red neckties, and is rarely seen wearing one of a different color.

Senator Ingalls has a great weakness for red neckties, and is rarely seen wearing one of a different color.

Senator Ingalls has a great weakness for red neckties, and is rarely seen wearing one of a different color.

ELGIE & RICE

Have a very large list of very choice properties, both residential and business, and can offer big inducements for clients who wish to secure good investments or for speculation.

QUEEN-STREET west, Parkdale, 300 feet by 112 feet deep, south side, extending from Close to Jameson, two corners.

350 FEET Springhurst, 142 feet deep, west side, \$45.

156 FEET, Dunn-avenue, 150 feet deep, \$47, west side.

6 SOLID BRICK HOUSES, new, modern improvements, from 9 to 11 rooms, good cellar, furnace, ranging in price from \$3800 to \$5570, as comfortable homes as can be had, near corner of Melbourn and Gwynne-ave., convenient to stations and street cars. Terms easy.

YONGE-STREET--Corner Clarence-avenue, 132x110, for sale at low price of \$67 per foot.

YONGE-STREET--Corner Farnham-avenue, 165x138 to lapse, a bargain for a few days.

BOND-STREET--The most convenient street for business men, can offer 4-500 ft. ranging from \$3500 to \$5500. Respectable location and only five minutes walk to P. O.

RESIDENCE, Wilton-Crescent, near Sherbourne-street, 10-roomed house, furnace, hot water, speaking-tubes, over-mantles, and very comfortable house, \$5500.

50 FEET, Marlborough-ave., near Yonge-st. Good building lot.

ELGIE & RICE, 16 King-east.

ELGIE & RICE, 16 King-east.

ELGIE & RICE, 16 King-east.

ELGIE & RICE, 16 King-east.

ELGIE & RICE, 16 King-east.

ELGIE & RICE, 16 King-east.

ELGIE & RICE, 16 King-east.

ELGIE & RICE, 16 King-east.

ELGIE & RICE, 16 King-east.

ELGIE & RICE, 16 King-east.

ELGIE & RICE, 16 King-east.

ELGIE & RICE, 16 King-east.

ELGIE & RICE, 16 King-east.

ELGIE & RICE, 16 King-east.

ELGIE & RICE, 16 King-east.

ELGIE & RICE, 16 King-east.

ELGIE & RICE, 16 King-east.

ELGIE & RICE, 16 King-east.

ELGIE & RICE, 16 King-east.

ELGIE & RICE, 16 King-east.

ELGIE & RICE, 16 King-east.

ELGIE & RICE, 16 King-east.

ELGIE & RICE, 16 King-east.

ELGIE & RICE, 16 King-east.

ELGIE & RICE, 16 King-east.

ELGIE & RICE, 16 King-east.

ELGIE & RICE, 16 King-east.

ELGIE & RICE, 16 King-east.

ELGIE & RICE, 16 King-east.

ELGIE & RICE, 16 King-east.

ELGIE & RICE, 16 King-east.

ELGIE & RICE, 16 King-east.

ELGIE & RICE, 16 King-east.

ELGIE & RICE, 16 King-east.

ELGIE & RICE, 16 King-east.

ELGIE & RICE, 16 King-east.

ELGIE & RICE, 16 King-east.

ELGIE & RICE, 16 King-east.

ELGIE & RICE, 16 King-east.

ELGIE & RICE, 16 King-east.

ELGIE & RICE, 16 King-east.

ELGIE & RICE, 16 King-east.

ELGIE & RICE, 16 King-east.

ELGIE & RICE, 16 King-east.

ELGIE & RICE, 16 King-east.

ELGIE & RICE, 16 King-east.

ELGIE & RICE, 16 King-east.

ELGIE & RICE, 16 King-east.

ELGIE & RICE, 16 King-east.

ELGIE & RICE, 16 King-east.

ELGIE & RICE, 16 King-east.

ELGIE & RICE, 16 King-east.

ELGIE & RICE, 16 King-east.

ELGIE & RICE, 16 King-east.

ELGIE & RICE, 16 King-east.

ELGIE & RICE, 16 King-east.

THE TORONTO WORLD: SATURDAY MORNING, JANUARY 11, 1920

Washington is delighted with the new British minister, Sir Julian Pauncecote, and his family.

Washington is delighted with the new British minister, Sir Julian Pauncecote, and his family.

Washington is delighted with the new British minister, Sir Julian Pauncecote, and his family.

Washington is delighted with the new British minister, Sir Julian Pauncecote, and his family.

Washington is delighted with the new British minister, Sir Julian Pauncecote, and his family.

Washington is delighted with the new British minister, Sir Julian Pauncecote, and his family.

Washington is delighted with the new British minister, Sir Julian Pauncecote, and his family.

Washington is delighted with the new British minister, Sir Julian Pauncecote, and his family.

Washington is delighted with the new British minister, Sir Julian Pauncecote, and his family.

Washington is delighted with the new British minister, Sir Julian Pauncecote, and his family.

Washington is delighted with the new British minister, Sir Julian Pauncecote, and his family.

Washington is delighted with the new British minister, Sir Julian Pauncecote, and his family.

Washington is delighted with the new British minister, Sir Julian Pauncecote, and his family.

Washington is delighted with the new British minister, Sir Julian Pauncecote, and his family.

Washington is delighted with the new British minister, Sir Julian Pauncecote, and his family.

Washington is delighted with the new British minister, Sir Julian Pauncecote, and his family.

Washington is delighted with the new British minister, Sir Julian Pauncecote, and his family.

Washington is delighted with the new British minister, Sir Julian Pauncecote, and his family.

SITE OF SCIENCE.

In the pursuit of science to test for the cause which produces the dimming effect of haze, there were about 20,000 particles found in each cubic foot.

The new metallic packing for piston rods, permits the rods to wear freely within it, is simple and strong, and may be removed and taken to pieces with ease.

A color test for railway employees has been introduced in the shape of a device consisting of a revolving series of colored glass light-bulbs from which a beam of light is directed through a lens and strikes the lamp of the sign box.

In testing by electricity the ordinary tar liquid is employed, and the liquid revolve through it, while the current from a dynamo turns the vat, and helps it to attain to combine with the gelatine of the skin.

Salt put in water which surrounds the ordinary glue pot causes a better glue to be obtained than when simple water is used.

When Sir J. Herschel was defending the character of astronomical science in view of an error of nearly 400,000 miles in estimating the sun's distance, the error was so small as to be equivalent to the apparent breadth of a human hair at a distance of 100 feet.

A good grease for boots, which is said to be a mixture of olive oil, is a mixture of olive oil and a part of castor-oil (the rubber), which are mixed together on a slow fire, and the mixture is then poured into a tin.

Senator Ingalls has a great weakness for red neckties, and is rarely seen wearing one of a different color.

Senator Ingalls has a great weakness for red neckties, and is rarely seen wearing one of a different color.

Senator Ingalls has a great weakness for red neckties, and is rarely seen wearing one of a different color.

Senator Ingalls has a great weakness for red neckties, and is rarely seen wearing one of a different color.

Senator Ingalls has a great weakness for red neckties, and is rarely seen wearing one of a different color.

Senator Ingalls has a great weakness for red neckties, and is rarely seen wearing one of a different color.

Senator Ingalls has a great weakness for red neckties, and is rarely seen wearing one of a different color.

Senator Ingalls has a great weakness for red neckties, and is rarely seen wearing one of a different color.

Senator Ingalls has a great weakness for red neckties, and is rarely seen wearing one of a different color.

Senator Ingalls has a great weakness for red neckties, and is rarely seen wearing one of a different color.

Senator Ingalls has a great weakness for red neckties, and is rarely seen wearing one of a different color.

ELGIE & RICE

Have a very large list of very choice properties, both residential and business, and can offer big inducements for clients who wish to secure good investments or for speculation.

QUEEN-STREET west, Parkdale, 300 feet by 112 feet deep, south side, extending from Close to Jameson, two corners.

350 FEET Springhurst, 142 feet deep, west side, \$45.

156 FEET, Dunn-avenue, 150 feet deep, \$47, west side.

6 SOLID BRICK HOUSES, new, modern improvements, from 9 to 11 rooms, good cellar, furnace, ranging in price from \$3800 to \$5570, as comfortable homes as can be had, near corner of Melbourn and Gwynne-ave., convenient to stations and street cars. Terms easy.

YONGE-STREET--Corner Clarence-avenue, 132x110, for sale at low price of \$67 per foot.

YONGE-STREET--Corner Farnham-avenue, 165x138 to lapse, a bargain for a few days.

BOND-STREET--The most convenient street for business men, can offer 4-500 ft. ranging from \$3500 to \$5500. Respectable location and only five minutes walk to P. O.

RESIDENCE, Wilton-Crescent, near Sherbourne-street, 10-roomed house, furnace, hot water, speaking-tubes, over-mantles, and very comfortable house, \$5500.

50 FEET, Marlborough-ave., near Yonge-st. Good building lot.

ELGIE & RICE, 16 King-east.

ELGIE & RICE, 16 King-east.

ELGIE & RICE, 16 King-east.

ELGIE & RICE, 16 King-east.

ELGIE & RICE, 16 King-east.

ELGIE & RICE, 16 King-east.

ELGIE & RICE, 16 King-east.

ELGIE & RICE, 16 King-east.

ELGIE & RICE, 16 King-east.

ELGIE & RICE, 16 King-east.

ELGIE & RICE, 16 King-east.

ELGIE & RICE, 16 King-east.

ELGIE & RICE, 16 King-east.

ELGIE & RICE, 16 King-east.

ELGIE & RICE, 16 King-east.

ELGIE & RICE, 16 King-east.

ELGIE & RICE, 16 King-east.

ELGIE & RICE, 16 King-east.

ELGIE & RICE, 16 King-east.

ELGIE & RICE, 16 King-east.

ELGIE & RICE, 16 King-east.

ELGIE & RICE, 16 King-east.

ELGIE & RICE, 16 King-east.

ELGIE & RICE, 16 King-east.

ELGIE & RICE, 16 King-east.

ELGIE & RICE, 16 King-east.

ELGIE & RICE, 16 King-east.

ELGIE & RICE, 16 King-east.

ELGIE & RICE, 16 King-east.

ELGIE & RICE, 16 King-east.

ELGIE & RICE, 16 King-east.

ELGIE & RICE, 16 King-east.

ELGIE & RICE, 16 King-east.

ELGIE & RICE, 16 King-east.

ELGIE & RICE, 16 King-east.

ELGIE & RICE, 16 King-east.

STILL LEADING
The numbers increasing daily, ladies' and men's popular wear.

HARRY WEBB'S DINING AND LUNCH PARLORS
66 and 68 Yonge-street.

NEW MUSIC
All the Year Round, London, Nello's 5c.

NEW SONGS
The Sadler's Dance, E. and F. J. Molloy, 50c.

AMUSEMENTS.
GRAND OPERA HOUSE.
Last two appearances of ROSINA VOKES

ROSLIN VOKES
Supported by FELIX MORRIS and her London Comedy Company.

JACQUES PARROW'S OPERA HOUSE
Matinee - Tuesday, Wednesday and Saturday.

WILLIAM GILLETTE'S
"HELD BY THE ENEMY."
First time at Popular Prices, 15, 20, 25, 30, 35.

PAVILION.
MR. GEORGE KENNAN
MONDAY JAN. 27. At 8:30. Boston's Covart Miss Chairman.

REV. ANNA H. SHAW
Speaks to-morrow, Sunday, in the Metropolitan Church at 11 a.m. and at 3 p.m. in Association Hall.

PARKDALE PRESBYTERIAN CHURCH
Dunn-Avenue
11TH ANNUAL Tea Meeting
Under the auspices of the LADIES' AID

Monday, 27th Jan. '20
IN AID OF the Building Fund
Tea served from 7 to 9:30 p.m.

REV. ANNA H. SHAW
M. D.
of Boston, the eloquent lay preacher, will speak to-morrow afternoon at 8 o'clock at the building fund tea in Association Hall, corner Yonge and Dundas-streets.

THE PEOPLE'S TABERNACLE
SHAFTSBURY HALL.
Z. M. WILKINSON, B.A., PASTOR.
Services will be held at 7 p.m. to-morrow.

BATTLE OF GETTYSBURG
COR. FRONT AND YORK STS.
Open all day. Admission, 25c; children, 15c.

CARSLER'S Grand Derby Sweep
\$50,000.00.
1st horse (four prizes) \$5,000 each, \$12,000 and \$2,000.

COLLEGE STREET, NORTH SIDE
Choice lot for sale a short distance from the University. \$100,000.

Bond Street Church
Rev. Jos. Wild, D.D., Pastor.
SUNDAY, JAN. 26th, 1920.
Morning - Two Lessons Which We Have Yet to Live.

VICTORIA RINK
HURON-STREET
BAND THIS EVENING
SCIENCE HALL.
Admission - Street East (Victoria-street).

CHARLES WATTS
will lecture to-morrow night 7:30 o'clock, Science Hall, "PHILOSOPHY AND THEOLOGY."

ACADEMY OF MUSIC
Monday, ONE WEEK ONLY. Monday, 7:30 p.m. Tuesday, 8:00 p.m.

Horticultural Pavilion
SUNDAY 3 P.M.
Mrs. Caroline B. Buel
Cor.-Sec. National W.C.T.U.

Mrs. Caroline B. Buel
Cor.-Sec. National W.C.T.U.
One of the leading speakers of the American Union will address the meeting.

MUSICAL AND EDUCATIONAL.
IN FULL WORKING ORDER.
Canadian Business University and Shortland Institute.

Canadian Business University and Shortland Institute.
PUBLICATION BUILDING, TORONTO
Bookkeeping, Penmanship, Arithmetic, Shorthand, Typewriting.

THOS. BENGOUGH,
Principal.
Send or call for our circular.

BRITISH AMERICAN
ARCADE,
YONGE ST.
The oldest and most successful kind in the Dominion.

WEST TORONTO JUNIOR
The lot on Dundas-street, near Maple and Leavenworth at a bargain, \$10 per foot for 100 feet.

JAMES GROVER,
38 King-street east, Toronto.

TO LET.
LARGE WAREHOUSE, No. 48 Colborne-street, with new planing and recently painted and refloored.

OFFICES on first floor of Pacific Buildings, Scott-street, east of Dundas-street, Toronto.

JOHN FISKEN & CO.,
23 Scott-street, Toronto.

FINANCIAL.
A FIRST OR SECOND MORTGAGE LOAN without delay at "The Land Bank," 10 Adelaide-street east.

MACLEAN & GRUNDY, LOAN AND ESTATE BROKERS, 10 Adelaide-street east.

BELOW MARKET RATES ON business property where security is unobtainable on real estate securities.

MONEY TO LOAN ON MORTGAGE.
Security loans at low rates on unimproved real estate.

W. F. CARRIER, REAL ESTATE, LOANING AND INSURANCE.
Special facilities for Real Estate, Fire Insurance, and Loaning.

A LARGE AMOUNT OF PRIVATE FUNDS to loan on Real Estate, City or Farm Property.

FRANK CAVLEY, 65 King-st. East.
\$250,000 TO LOAN
at 5% per cent. on Real Estate Security.

WILLIAM A. LEE & SON,
Agents Western Fire and Marine Insurance Company.

H. L. HIME & CO.,
Stock Brokers, Insurance and Financial Agents.

MONEY TO LOAN
Security loans at low rates on unimproved real estate.

W. J. RAMSAY & CO.,
Real Estate, Insurance and Financial Brokers.

W. J. RAMSAY & CO.,
Money Exchange a Specialty.
Business Loans, Mortgages Bought, Houses Rented, Rentals Collected.

XMAS NUMBERS
London Graphic, London News, Yale Tide, Lady's Victoria Weekly, Claretton, Globe-Star, Paris Pictorial, Frank Frank, Harper's Weekly, Sun, Judge, Puck, Life, etc., etc.

JAS. LYDON
AUCTIONEER
81 Yonge-street, near King-street

PRIVATE RESIDENCES AND MERCHANDISE
A SPECIALTY. PROMPT CASH SETTLEMENTS.

LYDON'S MART
81 Yonge-street, near King-street

HOUSEHOLD FURNITURE
Piano and other Effects

TUESDAY MORNING
January 28
AUCTION SALE

VALUABLE FREEHOLD PROPERTY
Under and by virtue of the power of sale contained in certain mortgages, which will be offered at the time of sale, there will be offered for sale by Messrs. Lydon, Co. Auctioneers, at their Auction Rooms, No. 81 King-street east in the City of Toronto, at the hour of 10 o'clock noon on

Saturday, the 8th day of February, 1920, the following lands and premises in the City of Toronto and County of York, more completely as follows:

Parcel I - Lots A, B, C and D according to a plan in the Registry Office for the City of Toronto as Plan No. 788, said plan being a subdivision of parts of lots 35, 36 and 37, Plan D, 200 east side of Beacomb-street, between Argyle and Queen-streets.

Parcel II - Lots E, F and G according to a plan in the Registry Office for the City of Toronto as Plan No. 788, said plan being a subdivision of parts of lots 35, 36 and 37, Plan D, 200 east side of Beacomb-street, between Argyle and Queen-streets.

Parcel III - Lots H, I, J, K, L, M, N, O, P, Q, R, S, T, U, V, W, X, Y, Z, according to a plan in the Registry Office for the City of Toronto as Plan No. 788, said plan being a subdivision of parts of lots 35, 36 and 37, Plan D, 200 east side of Beacomb-street, between Argyle and Queen-streets.

Further particulars may be had on application to the undersigned or to the vendors' solicitors, Messrs. Lydon, Co. Auctioneers, at their Auction Rooms, No. 81 King-street east in the City of Toronto.

THE MART
ESTABLISHED 1834
AUCTION SALE
OF
Freehold Property

Wellesley and Ontario Streets.
There will be sold by Messrs. Lydon, Co. Auctioneers, at their Auction Rooms, No. 81 King-street east in the City of Toronto, at the hour of 12 o'clock noon on Saturday, Jan. 25, 1920, the following freehold property:

NO. 285 Wellesley Street being a store and a kitchen with lawns in front and back and work about it.

NO. 481 Ontario Street, being a six roomed house with a large garden, and a well.

JOHN M. McFARLANE & CO.,
10 KING-STREET, EAST.

Auction Sale of Valuable Freehold Property.
Under and by virtue of the power of sale contained in certain mortgages, which will be offered at the time of sale, there will be offered for sale by Messrs. Lydon, Co. Auctioneers, at their Auction Rooms, No. 81 King-street east in the City of Toronto, at the hour of 10 o'clock noon on

SATURDAY, FEB. 8, '20, at the hour of twelve o'clock noon, the following valuable freehold property: That part of Lot 1, according to a plan in the Registry Office for the City of Toronto as Plan No. 788, said plan being a subdivision of parts of lots 35, 36 and 37, Plan D, 200 east side of Beacomb-street, between Argyle and Queen-streets.

W. H. STONE
UNDERTAKER
349 YONGE-STREET-349
And 514 Queen-street, West
Telephone 285. Always open.

The Trusts Corporation
OF ONTARIO.
CAPITAL SUBSCRIBED - \$1,000,000.
OFFICES AND VAULTS 23 TORONTO-STREET.

President - Hon. J. C. Aikins, P.C.
Vice-President - Hon. Sir Adam Wilson.
Manager - A. E. Plummer.

This company acts as liquidator, assignee or trustee for the benefit of creditors and generally in winding up estates, also accepts office of executor, administrator, receiver, guardian or committee; the execution of all trusts by appointment or substitution. Also acts as financial agent for individuals and corporations in all negotiations and business generally, including the issue and counterfeiting of bonds, debentures, etc., investment of money, management of estates, collection of rents and all financial obligations.

LONDON GUARANTEE AND ACCIDENT COMPANY.
(LIMITED).
The only British Guarantee and Accident Company in North America.

Eastern Assurance Company
OF CANADA.
Capital - \$1,000,000.
HOME OFFICE - HALIFAX, N.S.

THE HOME SAVINGS & LOAN CO. LIMITED.
Office No. 78 Church-street, Toronto.
\$500,000 TO LOAN ON MORTGAGE.

W. D. GRAND.
CITY FOUNDRY.
The old established foundry of J. R. ARMSTRONG & CO. has been removed from 161 Yonge-street to 219, 221 and 223 Queen-street east.

'HARRIS' BUYS OR SELLS BOTTLES
Pickle or Mustard Jars, etc., 27 and 29 WILLIAM-STREET. Telephone 1729. 136

THE MART
ESTABLISHED 1834
BY OLIVER, COATE & CO.
FURS, FURS, FURS

The undersigned will sell by auction at the Mart this morning at 10:30 the balance of the consignment.

Comprising Robes, Seal, Otter, Beaver and Fox. Also at their sale rooms, 100 King-street east, at 10:30. Terms cash.

OLIVER, COATE & CO.
AUCTIONEERS.

THE MART
ESTABLISHED 1834
AUCTION SALE

VALUABLE FREEHOLD PROPERTY
Under and by virtue of the power of sale contained in certain mortgages, which will be offered at the time of sale, there will be offered for sale by Messrs. Lydon, Co. Auctioneers, at their Auction Rooms, No. 81 King-street east in the City of Toronto, at the hour of 10 o'clock noon on

Saturday, the 8th day of February, 1920, the following lands and premises in the City of Toronto and County of York, more completely as follows:

Parcel I - Lots A, B, C and D according to a plan in the Registry Office for the City of Toronto as Plan No. 788, said plan being a subdivision of parts of lots 35, 36 and 37, Plan D, 200 east side of Beacomb-street, between Argyle and Queen-streets.

Parcel II - Lots E, F and G according to a plan in the Registry Office for the City of Toronto as Plan No. 788, said plan being a subdivision of parts of lots 35, 36 and 37, Plan D, 200 east side of Beacomb-street, between Argyle and Queen-streets.

Parcel III - Lots H, I, J, K, L, M, N, O, P, Q, R, S, T, U, V, W, X, Y, Z, according to a plan in the Registry Office for the City of Toronto as Plan No. 788, said plan being a subdivision of parts of lots 35, 36 and 37, Plan D, 200 east side of Beacomb-street, between Argyle and Queen-streets.

Further particulars may be had on application to the undersigned or to the vendors' solicitors, Messrs. Lydon, Co. Auctioneers, at their Auction Rooms, No. 81 King-street east in the City of Toronto.

THE MART
ESTABLISHED 1834
AUCTION SALE
OF
Freehold Property

Wellesley and Ontario Streets.
There will be sold by Messrs. Lydon, Co. Auctioneers, at their Auction Rooms, No. 81 King-street east in the City of Toronto, at the hour of 12 o'clock noon on Saturday, Jan. 25, 1920, the following freehold property:

NO. 285 Wellesley Street being a store and a kitchen with lawns in front and back and work about it.

NO. 481 Ontario Street, being a six roomed house with a large garden, and a well.

JOHN M. McFARLANE & CO.,
10 KING-STREET, EAST.

Auction Sale of Valuable Freehold Property.
Under and by virtue of the power of sale contained in certain mortgages, which will be offered at the time of sale, there will be offered for sale by Messrs. Lydon, Co. Auctioneers, at their Auction Rooms, No. 81 King-street east in the City of Toronto, at the hour of 10 o'clock noon on

SATURDAY, FEB. 8, '20, at the hour of twelve o'clock noon, the following valuable freehold property: That part of Lot 1, according to a plan in the Registry Office for the City of Toronto as Plan No. 788, said plan being a subdivision of parts of lots 35, 36 and 37, Plan D, 200 east side of Beacomb-street, between Argyle and Queen-streets.

W. H. STONE
UNDERTAKER
349 YONGE-STREET-349
And 514 Queen-street, West
Telephone 285. Always open.

The Trusts Corporation
OF ONTARIO.
CAPITAL SUBSCRIBED - \$1,000,000.
OFFICES AND VAULTS 23 TORONTO-STREET.

President - Hon. J. C. Aikins, P.C.
Vice-President - Hon. Sir Adam Wilson.
Manager - A. E. Plummer.

This company acts as liquidator, assignee or trustee for the benefit of creditors and generally in winding up estates, also accepts office of executor, administrator, receiver, guardian or committee; the execution of all trusts by appointment or substitution. Also acts as financial agent for individuals and corporations in all negotiations and business generally, including the issue and counterfeiting of bonds, debentures, etc., investment of money, management of estates, collection of rents and all financial obligations.

LONDON GUARANTEE AND ACCIDENT COMPANY.
(LIMITED).
The only British Guarantee and Accident Company in North America.

Eastern Assurance Company
OF CANADA.
Capital - \$1,000,000.
HOME OFFICE - HALIFAX, N.S.

THE HOME SAVINGS & LOAN CO. LIMITED.
Office No. 78 Church-street, Toronto.
\$500,000 TO LOAN ON MORTGAGE.

W. D. GRAND.
CITY FOUNDRY.
The old established foundry of J. R. ARMSTRONG & CO. has been removed from 161 Yonge-street to 219, 221 and 223 Queen-street east.

'HARRIS' BUYS OR SELLS BOTTLES
Pickle or Mustard Jars, etc., 27 and 29 WILLIAM-STREET. Telephone 1729. 136

White Star Line.
ROYAL MAIL STEAMERS.
New York to Liverpool every Wednesday.

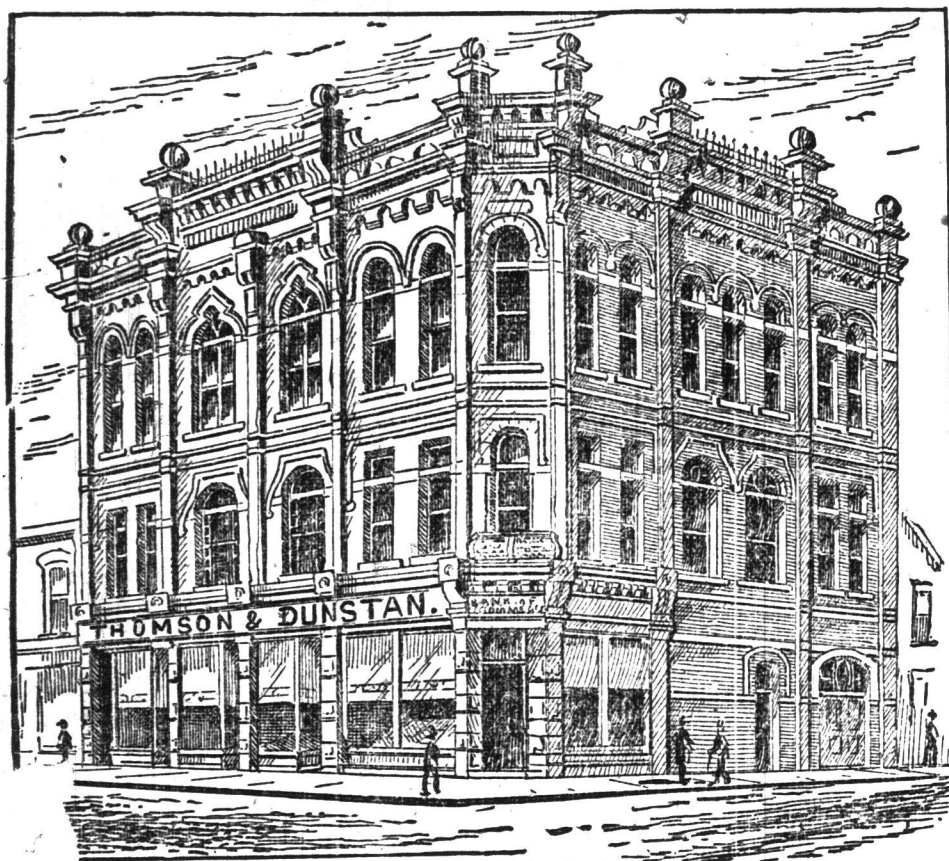
Second and third class passengers are boarded in accordance with the provisions of the Act in respect of emigration, and special provisions for married couples and families being given special preference.

T. W. JONES,
General Canadian Agent, 37 Yonge-st., Toronto.

NOTICE.
The Corporation of the City of Toronto will apply to the Legislature of the Province of Ontario, at its next Session, for legislation to provide:

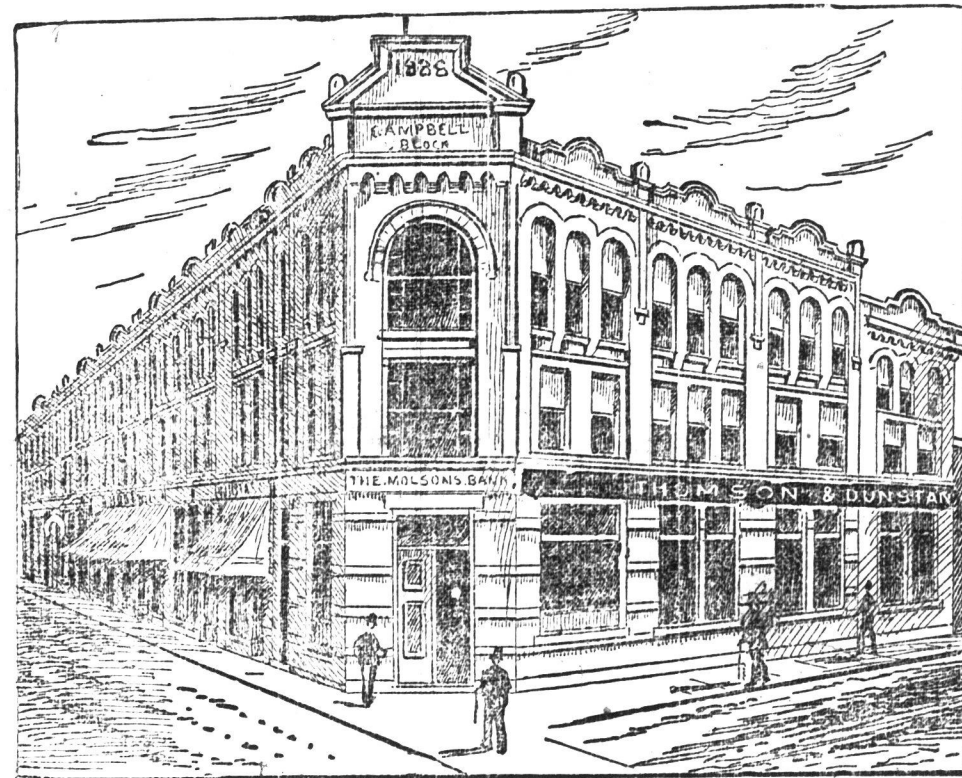
1. That the provision in sec. 13 of the Act of the said Legislature (53 Vic. cap. 73, sec. 13) enabling the said City to borrow, with the consent of the ratepayers, whatever sum may be required to enable the City to acquire the franchise of the said Corporation Street Railway Co. and of all real and personal property in connection with the same, should be amended so as to extend the current term of the franchise of the said Corporation Street Railway Co. to the expiration of the term of the said Corporation Street Railway Co. and of all real and personal property in connection with the same, should be amended so as to extend the current term of the franchise of the said Corporation Street Railway Co. to the expiration of the term of the said Corporation Street Railway Co. and of all real and personal property in connection with the same, should be amended so as to extend the current term of the franchise of the said Corporation Street Railway Co. to the expiration of the term of the said Corporation Street Railway Co. and of all real and personal property in connection with the same, should be amended so as to extend the current term of the franchise of the said Corporation Street Railway Co. to the expiration of the term of the said Corporation Street Railway Co. and of all real and personal property in connection with the same, should be amended so as to extend the current term of the franchise of the said Corporation Street Railway Co. to the expiration of the term of the said Corporation Street Railway Co. and of all real and personal property in connection with the same, should be amended so as to extend the current term of the franchise of the said Corporation Street Railway Co. to the expiration of the term of the said Corporation Street Railway Co. and of all real and personal property in connection with the same, should be amended so as to extend the current term of the franchise of the said Corporation Street Railway Co. to the expiration of the term of the said Corporation Street Railway Co. and of all real and personal property in connection with the same, should be amended so as to extend the current term of the franchise of the said Corporation Street Railway Co. to the expiration of the term of the said Corporation Street Railway Co. and of all real and personal property in connection with the same, should be amended so as to extend the current term of the franchise of the said Corporation Street Railway Co. to the expiration of the term of the said Corporation Street Railway Co. and of all real and personal property in connection with the same, should be amended so as to extend the current term of the franchise of the said Corporation Street Railway Co. to the expiration of the term of the said Corporation Street Railway Co. and of all real and personal property in connection with the same, should be amended so as to extend the current term of the franchise of the said Corporation Street Railway Co. to the expiration of the term of the said Corporation Street Railway Co. and of all real and personal property in connection with the same, should be amended so as to extend the current term of the franchise of the said Corporation Street Railway Co. to the expiration of the term of the said Corporation Street Railway Co. and of all real and personal property in connection with the same, should be amended so as to extend the current term of the franchise of the said Corporation Street Railway Co. to the expiration of the term of the said Corporation Street Railway Co. and of all real and personal property in connection with the same, should be amended so as to extend the current term of the franchise of the said Corporation Street Railway Co. to the expiration of the term of the said Corporation Street Railway Co. and of all real and personal property in connection with the same, should be amended so as to extend the current term of the franchise of the said Corporation Street Railway Co. to the expiration of the term of the said Corporation Street Railway Co. and of all real and personal property in connection with the same, should be amended so as to extend the current term of the franchise of the said Corporation Street Railway Co. to the expiration of the term of the said Corporation Street Railway Co. and of all real and personal property in connection with the same, should be amended so as to extend the current term of the franchise of the said Corporation Street Railway Co. to the expiration of the term of the said Corporation Street Railway Co. and of all real and personal property in connection with the same, should be amended so as to extend the current term of the franchise of the said Corporation Street Railway Co. to the expiration of the term of the said Corporation Street Railway Co. and of all real and personal property in connection with the same, should be amended so as to extend the current term of the franchise of the said Corporation Street Railway Co. to the expiration of the term of the said Corporation Street Railway Co. and of all real and personal property in connection with the same, should be amended so as to extend the current term of the franchise of the said Corporation Street Railway Co. to the expiration of the term of the said Corporation Street Railway Co. and of all real and personal property in connection with the same, should be amended so as to extend the current term of the franchise of the said Corporation Street Railway Co. to the expiration of the term of the said Corporation Street Railway Co. and of all real and personal property in connection with the same, should be amended so as to extend the current term of the franchise of the said Corporation Street Railway Co. to the expiration of the term of the said Corporation Street Railway Co. and of all real and personal property in connection with the same, should be amended so as to extend the current term of the franchise of the said Corporation Street Railway Co. to the expiration of the term of the said Corporation Street Railway Co. and of all real and personal property in connection with the same, should be amended so as to extend the current term of the franchise of the said Corporation Street Railway Co. to the expiration of the term of the said Corporation Street Railway Co. and of all real and personal property in connection with the same, should be amended so as to extend the current term of the franchise of the said Corporation Street Railway Co. to the expiration of the term of the said Corporation Street Railway Co. and of all real and personal property in connection with the same, should be amended so as to extend the current term of the franchise of the said Corporation Street Railway Co. to the expiration of the term of the said Corporation Street Railway Co. and of all real and personal property in connection with the same, should be amended so as to extend the current term of the franchise of the said Corporation Street Railway Co. to the expiration of the term of the said Corporation Street Railway Co. and of all real and personal property in connection with the same, should be amended so as to extend the current term of the franchise of the said Corporation Street Railway Co. to the expiration of the term of the said Corporation Street Railway Co. and of all real and personal property in connection with the same, should be amended so as to extend the current term of the franchise of the said Corporation Street Railway Co. to the expiration of the term of the said Corporation Street Railway Co. and of all real and personal property in connection with the same, should be amended so as to extend the current term of the franchise of the said Corporation Street Railway Co. to the expiration of the term of the said Corporation Street Railway Co. and of all real and personal property in connection with the same, should be amended so as to extend the current term of the franchise of the said Corporation Street Railway Co. to the expiration of the term of the said Corporation Street Railway Co. and of all real and personal property in connection with the same, should be amended so as to extend the current term of the franchise of the said Corporation Street Railway Co. to the expiration of the term of the said Corporation Street Railway Co. and of all real and personal property in connection with the same, should be amended so as to extend the current term of the franchise of the said Corporation Street Railway Co. to the expiration of the term of the said Corporation Street Railway Co. and of all real and personal property in connection with the same, should be amended so as to extend the current term of the franchise of the said Corporation Street Railway Co. to the expiration of the term of the said Corporation Street Railway Co. and of all real and personal property in connection with the same, should be amended so as to extend the current term of the franchise of the said Corporation Street Railway Co. to the expiration of the term of the said Corporation Street Railway Co. and of all real and personal property in connection with the same, should be amended so as to extend the current term of the franchise of the said Corporation Street Railway Co. to the expiration of the term of the said Corporation Street Railway Co. and of all real and personal property in connection with the same, should be amended so as to extend the current term of the franchise of the said Corporation Street Railway Co. to the expiration of the term of the said Corporation Street Railway Co. and of all real and personal property in connection with the same, should be amended so as to extend the current term of the franchise of the said Corporation Street Railway Co. to the expiration of the term of the said Corporation Street Railway Co. and of all real and personal property in connection with the same, should be amended so as to extend the current term of the franchise of the said Corporation Street Railway Co. to the expiration of the term of the said Corporation Street Railway Co. and of all real and personal property in connection with the same, should be amended so as to extend the current term of the franchise of the said Corporation Street Railway Co. to the expiration of the term of the said Corporation Street Railway Co. and of all real and personal property in connection with the same, should be amended so as to extend the current term of the franchise of the said Corporation Street Railway Co. to the expiration of the term of the said Corporation Street Railway Co. and of all real and personal property in connection with the same, should be amended so as to extend the current term of the franchise of the said Corporation Street Railway Co. to the expiration of the term of the said Corporation Street Railway Co. and of all real and personal property in connection with the same, should be amended so as to extend the current term of the franchise of the said Corporation Street Railway Co. to the expiration of the term of the said Corporation Street Railway Co. and of all real and personal property in connection with the same, should be amended so as to extend the current term of the franchise of the said Corporation Street Railway Co. to the expiration of the term of the said Corporation Street Railway Co. and of all real and personal property in connection with the same, should be amended so as to extend the current term of the franchise of the said Corporation Street Railway Co. to the expiration of the term of the said Corporation Street Railway Co. and of all real and personal property in connection with the same, should be amended so as to extend the current term of the franchise of the said Corporation Street Railway Co. to the expiration of the term of the said Corporation Street Railway Co. and of all real and personal property in connection with the same, should be amended so as to extend the current term of the franchise of the said Corporation Street Railway Co. to the expiration of the term of the said Corporation Street Railway Co. and of all real and personal property in connection with the same, should be amended so as to extend the current term of the franchise of the said Corporation Street Railway Co. to the expiration of the term of the said Corporation Street Railway Co. and of all real and personal property in connection with the same, should be amended so as to extend the current term of the franchise of the said Corporation Street Railway Co. to the expiration of the term of the said Corporation Street Railway Co. and of all real and personal property in connection with the same, should be amended so as to extend the current term of the franchise of the said Corporation Street Railway Co. to the expiration of the term of the said Corporation Street Railway Co. and of all real and personal property in connection with the same, should be amended so as to extend the current term of the franchise of the said Corporation Street Railway Co. to the expiration of the term of the said Corporation Street Railway Co. and of all real and personal property in connection with the same, should be amended so as to extend the current term of the franchise of the said Corporation Street Railway Co. to the expiration of the term of the said Corporation Street Railway Co. and of all real and personal property in connection with the same, should be amended so as to extend the current term of the franchise of the said Corporation Street Railway Co. to the expiration of the term of the said Corporation Street Railway Co. and of all real and personal property in connection with the same, should be amended so as to extend the current term of the franchise of the said Corporation Street Railway Co. to the expiration of the term of the said Corporation Street Railway Co. and of all real and personal property in connection with the same, should be amended so as to extend the current term of the franchise of the said Corporation Street Railway Co. to the expiration of the term of the said Corporation Street Railway Co. and of all real and personal property in connection with the same, should be amended so as to extend the current term of the franchise of the said Corporation Street Railway Co. to the expiration of the term of the said Corporation Street Railway Co. and of all real and personal property in connection with the same, should be amended so as to extend the current term of the franchise of the said Corporation Street Railway Co. to the expiration of the term of the said Corporation Street Railway Co. and of all real and personal property in connection with the same, should be amended so as to extend the current term of the franchise of the said Corporation Street Railway Co. to the expiration of the term of the said Corporation Street Railway Co. and of all real and personal property in connection with the same, should be amended so as to extend the current term of the franchise of the said Corporation Street Railway Co. to the expiration of the term of the said Corporation Street Railway Co. and of all real and personal property in connection with the same, should be amended so as to extend the current term of the franchise of the said Corporation Street Railway Co. to the expiration of the term of the said Corporation Street Railway Co. and of all real and personal property in connection with the same, should be amended so as to extend the current term of the franchise of the said Corporation Street Railway Co. to the expiration of the term of the said Corporation Street Railway Co. and of all real and personal property in connection with the same, should be amended so as to extend the current term of the franchise of the said Corporation Street Railway Co. to the expiration of the term of the said Corporation Street Railway Co. and of all real and personal property in connection with the same, should be amended so as to extend the current term of the franchise of the said Corporation Street Railway Co. to the expiration of the term of the said Corporation Street Railway Co. and of all real and personal property in connection with the same, should be amended so as to extend the current term of the franchise of the said Corporation Street Railway Co. to the expiration of the term of the said Corporation Street Railway Co. and of all real and personal property in connection with the same, should be amended so as to extend the current term of the franchise of the said Corporation Street Railway Co. to the expiration of the term of the said Corporation Street Railway Co. and of all real and personal property in connection with the same, should be amended so as to extend the current term of the franchise of the said Corporation Street Railway Co. to the expiration of the term of the said Corporation Street Railway Co. and of all real and personal property in connection with the same, should be amended so as to extend the current term of the franchise of the said Corporation Street Railway Co. to the expiration of the term of the said Corporation Street Railway Co. and of all real and personal property in connection with the same, should be amended so as to extend the current term of the franchise of the said Corporation Street Railway Co. to the expiration of the term of the said Corporation Street Railway Co. and of all real and personal property in connection with the same, should be amended so as to extend the current term of the franchise of the said Corporation Street Railway Co. to the expiration of the term of the said Corporation Street Railway Co. and of all real and personal property in connection with the same, should be amended so as to extend the current term of the franchise of the said Corporation Street Railway Co. to the expiration of the term of the said Corporation Street Railway Co. and of all real and personal property in connection with the same, should be amended so as to extend the current term of the franchise of the said Corporation Street Railway Co. to the expiration of the term of the said Corporation Street Railway Co. and of all real and personal property in connection with the same, should be amended so as to extend the current term of the franchise of the said Corporation Street Railway Co. to the expiration of the term of the said Corporation Street Railway Co. and of all real and personal property in connection with the same, should be amended so as to extend the current term of the franchise of the said Corporation Street Railway Co. to the expiration of the term of the said Corporation Street Railway Co. and of all real and personal property in connection with the same, should be amended so as to extend the current term of the franchise of the said Corporation Street Railway Co. to the expiration of the term of the said Corporation Street Railway Co. and of all real and personal property in connection with the same, should be amended so as to extend the current term of the franchise of the said Corporation Street Railway Co. to the expiration of the term of the said Corporation Street Railway Co. and of all real and personal property in connection with the same, should be amended so as to extend the current term of the franchise of the said Corporation Street Railway Co. to the expiration of the term of the said Corporation Street Railway Co. and of all real and personal property in connection with the same, should be amended so as to extend the current term of the franchise of the said Corporation Street Railway Co. to the expiration of the term of the said Corporation Street Railway Co. and of all real and personal property in connection with the same, should be amended so as to extend the current term of the franchise of the said Corporation Street Railway Co. to the expiration of the term of the said Corporation Street Railway Co. and of all real and personal property in connection with the same, should be amended so as to extend the current term of the franchise of the said Corporation Street Railway Co. to the expiration of the term of the said Corporation Street Railway Co. and of all real and personal property in connection with the same, should be amended so as to extend the current term of the franchise of the said Corporation Street Railway Co. to the expiration of the term of the said Corporation Street Railway Co. and of all real and personal property in connection with the same, should be amended so as to extend the current term of the franchise of the said Corporation Street Railway Co. to the expiration of the term of the said Corporation Street Railway Co. and of all real and personal property in connection with the same, should be amended so as to extend the current term of the franchise of the said Corporation Street Railway Co. to the expiration of the term of the said Corporation Street Railway Co. and of all real and personal property in connection with the same, should be amended so as to extend the current term of the franchise of the said Corporation Street Railway Co. to the expiration of the term of the said Corporation Street Railway Co. and of all real and personal property in connection with the same, should be amended so as to extend the current term of the franchise of the said Corporation Street Railway Co. to the expiration of the term of the said Corporation Street Railway Co. and of all real and personal property in connection with the same, should be amended so as to extend the current term of the franchise of the said Corporation Street Railway Co. to the expiration of the term of the said Corporation Street Railway Co. and of all real and personal property in connection with the same, should be amended so as to extend the current term of the franchise of the said Corporation Street Railway Co. to the expiration of the term of the said Corporation Street Railway Co. and of all real and personal property in connection with the same, should be amended so as to extend the current term of the franchise of the said Corporation Street Railway Co. to the expiration of the term of the said Corporation Street Railway Co. and of all real and personal property in connection with the same, should be amended so as to extend the current term of the franchise of the said Corporation Street Railway Co. to the expiration of the term of the said Corporation Street Railway Co. and of all real and personal property in connection with the same, should be amended so as to extend the current term of the franchise of the said Corporation Street Railway Co. to the expiration of the term of the said Corporation Street Railway Co. and of all real and personal property in connection with the same, should be amended so as to extend the current term of the franchise of the said Corporation Street Railway Co. to the expiration of the term of the said Corporation Street Railway Co. and of all real and personal property in connection with the same, should be amended so as to extend the current term of the franchise of the said Corporation Street Railway Co. to the expiration of the term of the said Corporation Street Railway Co. and of all real and personal property in connection with the same, should be amended so as to extend the current term of the franchise of the said Corporation Street Railway Co. to the expiration of the term of the said Corporation Street Railway Co. and of all real and personal property in connection with the same, should be amended so as to extend the current term of the franchise of the said Corporation Street Railway Co. to the expiration of the term of the said Corporation Street Railway Co. and of all real and personal property in connection with the same, should be amended so as to extend the current term of the franchise of the said Corporation Street Railway Co. to the expiration of the term of the said Corporation Street Railway Co. and of all real and personal property in connection with the same, should be amended so as to extend the current term of the franchise of the said Corporation Street Railway Co. to the expiration of the term of the said Corporation Street Railway Co. and of all real and personal property in connection with the same, should be amended so as to extend the current term of the franchise of the said Corporation Street Railway Co. to the expiration of the term of the said Corporation Street Railway Co. and of all real and personal property in connection with the same, should be amended so as to extend the current term of the franchise of the said Corporation Street Railway Co. to the expiration of the term of the said Corporation Street Railway Co. and of all real and personal property in connection with the same, should be amended so as to extend the current term of the franchise of the said Corporation Street Railway Co. to the expiration of the term of the said Corporation Street Railway Co. and of all real and personal property in connection with the same, should

Established



Head Office--Mail Building.

1883



LIST

- ALBERTA-AVENUE--\$9.
- ALEXANDER-AVENUE, 100 feet--\$19.
- ALEXANDER-AVENUE--\$10.
- ANNETTE-STREET, 240 feet--\$25.
- ANNETTE-STREET, 70 feet--central--\$26.
- ANNETTE-STREET, store and dwelling--\$2500.
- ANNETTE-STREET--corner--\$24.
- ARDAGH-STREET--\$15.
- BLOOR-STREET--\$25.
- BLOOR-ST--\$15.
- CLENDENAN-AVE--\$18.
- CLENDENAN-AVE., 150 feet--\$20
- CLENDENAN-AVE. -- a beautiful lot--170 x 300.
- DURIE-ST--\$10.
- DURIE-ST--\$12.
- DUNDAS-ST., 50 feet--\$60.
- DUNDAS ST., 50 feet--\$105.
- DUNDAS-ST., 120 feet--\$110.
- DUNDAS-ST., 120 feet--\$135.
- DUNDAS-ST., 50 feet--\$150.
- ELIZABETH-ST--\$18.
- ELIZABETH-ST--\$19.
- ELIZABETH-ST--\$20.
- FLORENCE-AVE--\$8.
- FAIRVIEW AVE--\$18.
- FAIRVIEW AVE--\$19.
- GILMOUR AVE--17.
- GILMOUR AVE--\$18.
- HENRY ST--\$10.
- JANE ST--\$12.
- JOY ST--\$16.
- KEELE ST--\$15.
- LOUISA ST--\$15.
- LOUISA ST--\$20.
- LOUISA ST., corner, 50 feet--\$30.
- LINCOLN AVE--\$16.
- LAKEVIEW AVE--\$23.
- MARIA ST., 250 feet--\$15.
- MURRAY ST--\$10.
- MURRAY ST--\$12.
- PEELE ST--\$10.
- PEELE ST--\$12.
- QUEBEC AVE--\$18.
- ROWLAND ST--\$16.
- ST. CLAIR AVE., 390 feet--\$11.50.
- ST. CLAIR AVE., 100 feet--\$23.
- ST. CLAIR AVE., 50 feet--\$22.
- ST. CLAIR AVE., 200 feet--\$28.
- THOMAS ST--\$16.
- UNION ST., 120 feet--\$40.
- VINE ST., 100 feet--\$40.
- WILSON PLACE, 50 feet--\$30.
- WILSON PLACE, pair houses--\$4800.
- WOODBURN AVE--\$18.

J. F. THOMSON.

LIST

- \$9000--ADELAIDE ST., 56 x 100, good corner.
- \$3000--ADELAIDE ST., 20 x 100 feet.
- \$60 PER FOOT--Admiral road, 100 feet.
- \$25 PER FOOT--Campbell ave., 400 feet.
- \$40 PER FOOT--Cottingham street, 220 feet.
- \$25 PER FOOT--Dufferin street, 1 lot.
- \$32 PER FOOT--Delaware st., 75 feet.
- \$90 PER FOOT--Huron street, corner Lowther, 114 feet.
- \$20 PER FOOT--Hamburg st., 135 feet.
- \$200 PER FOOT--King street vacant; 200 feet.
- \$30,000--King street--fine block; 51 feet, corner.
- \$35 PER FOOT--Macpherson avenue, 100 feet.
- \$40 PER FOOT--Macpherson avenue, 200 feet.
- \$45 PER FOOT--Macpherson avenue, 200 feet.
- \$75 PER FOOT--Madison ave., 100 feet.
- \$15,000--OLIVE ST., near Don depot, well rented.
- \$20 PER FOOT--Oak street, corner St. Clair, 30 feet.
- \$60,000--QUEEN ST., corner of York street paying 4 per cent. net.
- \$400 PER FOOT--Queen st., near Victoria, 44 feet.
- \$16 PER FOOT--Radford street, 150 feet.
- \$45 PER FOOT--Roxborough st., 166 feet.
- \$48 PER FOOT--Roxborough st., 200 feet.
- \$50 PER FOOT--Roxborough st., 200 feet.
- \$53 PER FOOT--Roxborough street, 200 feet.
- \$56 PER FOOT--Roxborough street, 150 feet.
- \$60 PER FOOT--Roxborough street, 100 feet.
- \$40 PER FOOT--St. Clair ave., 50 feet.
- \$40 PER FOOT--St. Clair ave., 52 feet.
- \$35 PER FOOT--St. Clair ave., 132 feet.
- \$20,000--SIMCOE ST., with house, 148 feet.
- \$400 PER FOOT--Yonge street, corner Isabella, 52 feet.
- \$11,500--YONGE ST., corner Price.
- \$7000--Yonge street, above Price street.
- \$300 PER FOOT--Yonge street, corner Davenport road.
- \$150 PER FOOT--Yonge street, 252 feet.
- WE HAVE FINE Bay-street Warehouse that pays 5 per cent. net.
- OFFICE BUILDING on Victoria street paying 4 per cent. net.
- BLOCK QUEEN ST. Stores east of York street paying 4 per cent. net.
- BLOCK STORES, QUEEN-ST., near Bathurst, north side, paying 3 per cent. net. Best built stores in the city.

SOME MOST DESIRABLE acre blocks for sub-division, on easy terms.

ALLO SOME CENTRAL store properties, paying a very good interest. The land is rapidly increasing in value.

A chance of a lifetime. For full particulars apply to

LIST

- \$2500 PER ACRE--10 acres of sub-division; in direct line of proposed Gerrard-street extension, near Coxwell-avenue. Don't miss it.
- 47 ACRES at junction of C.P.R. Don branch and Ontario & Quebec R.R. The suburban depot of "Gudimora" is contracted for on this property. This property will give the purchaser a fortune. For particulars and maps apply to Thomson & Dunstan.
- 47 ACRES, running north from Queen-street to Danforth-avenue, known as the Platt estate. We can sell this at an average price of \$15.50 per foot and the Queen-street front is today worth \$50. Gerrard-street extension will run through this plot, giving it two important thoroughfares. Thomson & Dunstan.
- 10 ACRES for sub-division on Broadview-avenue, containing some of the most picturesque residential sites in Toronto. Call for full particulars.
- THE FUTURE business block, containing 1175 feet on Gerrard-street, Pape and Carlaw-avenues. Street car terminus, C.P.R. depot and central. Call for particulars.
- \$22 PER FOOT, about 500 feet high, level land, with commanding view of Lake Ontario and the city; nothing so cheap in the vicinity.
- \$800 PER ACRE--Salmon-ave., 10 acres; a sure investment.
- WE HAVE a few choice water frontages still for sale on Ashbridge's Bay, after a heavy run. First come, first served. In this grand field for speculation.
- WE OFFER in this list the most valuable business site east of the market, the northwest corner of Broadview-avenue and Queen-street--\$240 per foot. It will never be bought at this price again.
- BROADVIEW-AVE., cor. Sparkhill-avenue. Here is the chance to double your money, the speculators corner, Broadway \$50 (corner), and Sparkhill \$25; nothing better.
- BRIGHTON AVE., two brick-fronted houses--\$3000.
- BROOKLYN-AVE--\$23.
- BIRTLE AVE--\$16.
- BROOKE AVE., cheap--\$22.
- BOLTON AVE., corner Cummings street, 100 x 100 feet, and lot 1500. carries itself, a chance--\$22.
- CYPRESS AVE., near Broadview--\$22.
- CYPRESS AVE., corner Broadview-avenue, a beautiful spot for a residence--\$70.
- DANFORTH AVE., corner Ross--a bargain--\$16.
- DANFORTH AVE., near Logan-avenue, cheap--\$25.
- EASTERN AVE., corner Booth, a good location--\$35.
- EASTERN AVE., near Booth, a good investment--\$32.
- GERRARD ST., near Jones, very desirable--\$23.
- GERRARD ST., corner Broadview, a grand store site--\$30.
- GUELPH AVE., for residence--\$20.
- HAMPTON AVE., near street cars--\$25.
- HERBERT AVE., close to Woodbine, cheap--\$13.
- LOGAN AVE.--Look, near Gerrard--\$23.
- LANGLEY AVE., best residential street--\$35.
- LESLIE ST., corner Doel. Don't miss it--\$25.
- MORSE ST., two houses cheap--\$2800.
- PAPE AVE--\$15.
- PAPE AVE--\$28.
- QUEEN ST., near Pape, a chance \$30.
- QUEEN ST., corner Leslie, a bargain--\$60.
- SMITH ST., corner Logan--\$30.
- SMITH ST., very cheap--\$27.50.
- SPARKHALL AVE., cheapest property east--\$25.
- VICTOR AVE., corner Howland, rare--\$30.
- VICTOR AVE., near Broadview--the opportunity--\$30.
- WITHEROW AVE., corner Broadview; good--\$70.
- WITHEROW AVE., corner Logan, a capital investment--\$28.
- WITHEROW AVE., near Pape--\$24.
- WILSON ST., beautifully situated and low price--\$22.
- WHITNEY AVE., county taxes--\$16.
- WILSON ST., good value--\$30.
- BEE ST--\$9.
- CRONYN AVE--\$8.
- GAMBLE AVE--\$10.
- LESLIE ST--\$8.
- TORRENS AVE--\$7.

GEO. DUNSTAN.

THOMSON & DUNSTAN

Real Estate Brokers, Valuators, Renting and Loans

WEST BRANCH: West Toronto Junction,
CAMPBELL BLOCK,
ARTHUR MEREDITH, Manager.

HEAD OFFICE:
MAIL BUILDING,
TELEPHONE 1327.

EAST BRANCH: 796 Queen-street East.
TELEPHONE 2096.
EVELYN MACRAE, Manager.