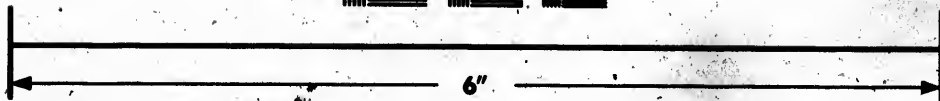
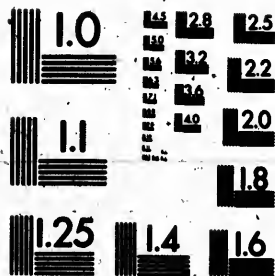


**IMAGE EVALUATION
TEST TARGET (MT-3)**



**Photographic
Sciences
Corporation**

23 WEST MAIN STREET
WEBSTER, N.Y. 14580
(716) 873-4503

**CIHM
Microfiche
Series
(Monographs)**

**ICMH
Collection de
microfiches
(monographies)**



Canadian Institute for Historical Microreproductions / Institut canadien de microreproductions historiques

© 1991

Technical and Bibliographic Notes / Notes techniques et bibliographiques

The Institute has attempted to obtain the best original copy available for filming. Features of this copy which may be bibliographically unique, which may alter any of the images in the reproduction, or which may significantly change the usual method of filming, are checked below.

L'Institut a microfilmé le meilleur exemplaire qu'il lui a été possible de se procurer. Les détails de cet exemplaire qui sont peut-être uniques du point de vue bibliographique, qui peuvent modifier une image reproduite, ou qui peuvent exiger une modification dans la méthode normale de filmage sont indiqués ci-dessous.

- Coloured covers/
Couverture de couleur.
- Covers damaged/
Couverture endommagée
- Covers restored and/or laminated/
Couverture restaurée et/ou pelliculée
- Cover title missing/
Le titre de couverture manque
- Coloured maps/
Cartes géographiques en couleur
- Coloured ink (i.e. other than blue or black)/
Encre de couleur (i.e. autre que bleue ou noire)
- Coloured plates and/or illustrations/
Planches et/ou illustrations en couleur
- Bound with other material/
Relié avec d'autres documents.
- Tight binding may cause shadows or distortion
along interior margin/
La reliure serrée peut causer de l'ombre ou de la
distorsion le long de la marge intérieure
- Blank leaves added during restoration may appear
within the text. Whenever possible, these have
been omitted from filming/
Il se peut que certaines pages blanches ajoutées
lors d'une restauration apparaissent dans le texte,
mais, lorsque cela était possible, ces pages n'ont
pas été filmées.

- Coloured pages/
Pages de couleur
- Pages damaged/
Pages endommagées
- Pages restored and/or laminated/
Pages restaurées et/ou pelliculées
- Pages discoloured, stained or foxed/
Pages décolorées, tachetées ou piquées
- Pages detached/
Pages détachées
- Showthrough/
Transparence
- Quality of print varies/
Qualité inégale de l'impression
- Continuous pagination/
Pagination continue
- Includes index(es)/
Comprend un (des) index

Title on header taken from: /
Le titre de l'en-tête provient:

- Title page of issue/
Page de titre de la livraison
- Caption of issue/
Titre de départ de la livraison
- Masthead/
Générique (périodiques) de la livraison

- Additional comments: /
Commentaires supplémentaires:

Docket title page is bound in as last page in book but filmed as first page on fiche.

This item is filmed at the reduction ratio checked below/
Ce document est filmé au taux de réduction indiqué ci-dessous.

10X	14X	18X	22X	26X	30X
<input type="checkbox"/>	<input type="checkbox"/>	<input type="checkbox"/>	<input type="checkbox"/>	<input type="checkbox"/>	<input checked="" type="checkbox"/>
12X	16X	20X	24X	28X	32X

The copy filmed here has been reproduced thanks to the generosity of:

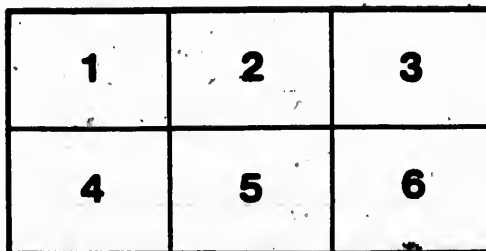
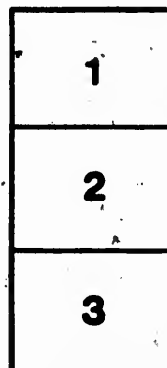
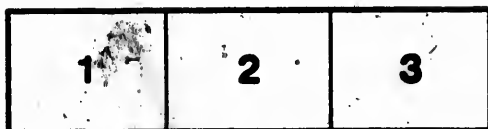
Library of the National
Archives of Canada

The images appearing here are the best quality possible considering the condition and legibility of the original copy and in keeping with the filming contract specifications.

Original copies in printed paper covers are filmed beginning with the front cover and ending on the last page with a printed or illustrated impression, or the back cover when appropriate. All other original copies are filmed beginning on the first page with a printed or illustrated impression, and ending on the last page with a printed or illustrated impression.

The last recorded frame on each microfiche shall contain the symbol \rightarrow (meaning "CONTINUED"), or the symbol ∇ (meaning "END"), whichever applies.

Maps, plates, charts, etc., may be filmed at different reduction ratios. Those too large to be entirely included in one exposure are filmed beginning in the upper left hand corner, left to right and top to bottom, as many frames as required. The following diagrams illustrate the method:



L'exemplaire filmé fut reproduit grâce à la générosité de:

La bibliothèque des Archives
nationales du Canada

Les images suivantes ont été reproduites avec le plus grand soin, compte tenu de la condition et de la netteté de l'exemplaire filmé, et en conformité avec les conditions du contrat de filmage.

Les exemplaires originaux dont la couverture en papier est imprimée sont filmés en commençant par le premier plat et en terminant soit par la dernière page qui comporte une empreinte d'impression ou d'illustration, soit par le second plat, selon le cas. Tous les autres exemplaires originaux sont filmés en commençant par la première page qui comporte une empreinte d'impression ou d'illustration et en terminant par la dernière page qui comporte une telle empreinte.

Un des symboles suivants apparaîtra sur la dernière image de chaque microfiche, selon le cas: le symbole \rightarrow signifie "A SUIVRE", le symbole ∇ signifie "FIN".

Les cartes, planches, tableaux, etc., peuvent être filmés à des taux de réduction différents. Lorsque le document est trop grand pour être reproduit en un seul cliché, il est filmé à partir de l'angle supérieur gauche, de gauche à droite, et de haut en bas, en prenant le nombre d'images nécessaire. Les diagrammes suivants illustrent la méthode.

Great Western Railway.

SPECIFICATION

OF A

FOUR-WHEELED

IRON COAL, &c. TRUCK.

January, 1876, 1852.

100/100

Great Western Railway.

SPECIFICATION

OF A

Four-wheeled Iron Coal, &c. Truck.

General Dimensions.

	Ft.	In.
Length over under-frame and box.....	15	0
Width over do. and do.....	9	7
Height from rails to centre of buffers.....	3	0
Width from centre to centre of journals.....	8	5½
Length of springs from centre to centre of brackets.....	3	0
Distance of wheels apart, centres.....	9	9
Do. of buffers do. do.	5	10

Framing, &c.

The exterior side and end frames to be of angle iron 7-inches deep, according to the full-sized section shown, with an angle-iron rivetted all round the top. The internal transverse bearers to be of 7-inch by $\frac{5}{8}$ -inch rolled bars, with a 1½-inch by 1½-inch angle iron, rivetted on each side, as shewn. The end frames to butt against the side frames, and be secured by strong corner brackets and triangular lap plates $\frac{3}{8}$ -inch thick; the ends to have a 7-inch by 3-inch elm plank fitted and bolted to them, as shown.

The transverse bearers to be secured to the sides by angle brackets $\frac{3}{8}$ -inch thick, and triangular lap plates $\frac{3}{8}$ -inch thick, as shewn.

Diagonal tie plates, 6-inches by $\frac{3}{8}$ -inch, to be rivetted to the top flanges of the transverse bearers and the corner top plates, as shewn.

Axle Guards, &c.

The axle-guards to be of best bar iron, 2½-inches by 2-inch, bent and welded to the form shown, in one piece with the spring brackets, and securely rivetted to the side frames. The spring brackets and spring stops to be clean and well made, and forged in one piece with the axle guards. The axle guards and stay rods to be shouldered and accurately fitted to the horns, and bolted thereto.

Buffing and Drawing Apparatus.

The buffer springs to be of vulcanised India-rubber rings, fitted into cast iron boxes, with rods, heads and disc plates, as shewn by the detail drawing.

The draw bars to be fitted with vulcanised India-rubber springs, slides and nuts, as shewn by the detail drawing. The chains to be of best cable iron 1½ inches diameter, the shackles and pins of the same description of iron, and 1½-inches diameter.

Flooring, &c.

The floor to be of 2-inch memel plank, in single lengths, the planks over the buffers to be carried out beyond the framing with a corresponding plank underneath for bolting the buffers between, and so arranged as to receive the blow when the buffers are driven home.

Sides and Ends.

The sides and ends to be covered with wrought iron plates $\frac{1}{2}$ -in., well rivetted to the staunchcons and the side and end frames by angle irons.

The end and door staunchcons to be of T. iron, fixed inside, kneed as shown. The sides to be of the height shown, with top angle iron and top rails. The flaps to be hinged and have chains, fastenings and bars, as shewn.

Axle Boxes.. *Shermanwell's Patent*

The axle boxes to be clean, sound and well made castings, in every respect according to the detail drawings. The grease box covers to be strong, well made and closely fitted.

The bearings to be of "Vaucher's" patent metal, sound, well made and well bedded into the axle boxes, and fitted to the journals of the wheels. The grease holes in the axle boxes, and in the bearings, to be accurately formed to meet each other as shewn. The spring clips to be clean and well forged, filed and fitted to their places, the holes in the axle boxes to be rimmed out true to receive them.

Side Springs.

The side springs to have seven plates, each 4-inches wide—the top and bottom plates to be $\frac{1}{2}$ -inch thick, the others $\frac{3}{4}$ -inch thick, to be of the length, width and camber shown on the drawings, with a centre bolt, with turned head, each to sustain a load of $3\frac{1}{2}$ tons, with $2\frac{1}{2}$ -inch deflection, and warranted against breakage or loss of camber for 12 months after date of delivery.

Painting.

The whole to be painted three coats brown and to have the Company's initials—the number and weight painted on each side in large white letters and figures.

Materials and General Observations, &c.

The Company will supply the wheels and axles, and deliver them to the Contractor at any station on the Railway. The whole of the materials to be of the best description of their respective kinds—the iron framing clean rolled and free from flaws accurately fitted and strongly rivetted together, the detail parts to be clean and well made, and filed to shape. The framing to be accurately square and straight and the whole of the detail parts fixed equidistant from the centre line.

The wood-work to be sound, dry, and free from any defects.

The whole to be put together in a substantial and workmanlike manner, to the satisfaction of the Company's Engineer, who shall have full power to reject all or any such waggons as are not in full accordance with the spirit and intention of this Specification, as respects materials and workmanship, and be delivered complete and ready for use (free of charge) on the rails at any of the Stations on the Great Western Railway in equal numbers in May, June and July 1852, and if not so delivered complete and ready for use within the above periods respectively the Contractor shall forfeit to the Company as damages twenty shillings per waggon per week for each week he shall exceed the time specified for delivery.

No advantage to be taken of any omission of details in the drawings, or in this Specification, as full explanation in detail will be given, should any part not be sufficiently shown or understood.

The terms and conditions of payment to be specified in the Tender.

FORM OF TENDER.

of _____

do hereby engage to construct and deliver

_____ Waggon, according to the foregoing Specification, and the

Drawings therein referred to, for the sum of _____

_____ for each Waggon;

to be delivered by _____

Payments to be made as follows:

Name _____

Address _____

Date _____

NOTE.—The Form of Tender must NOT be detached from the Specification.

