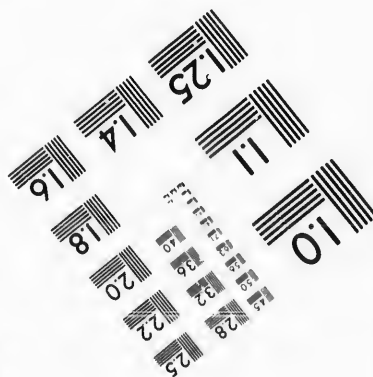
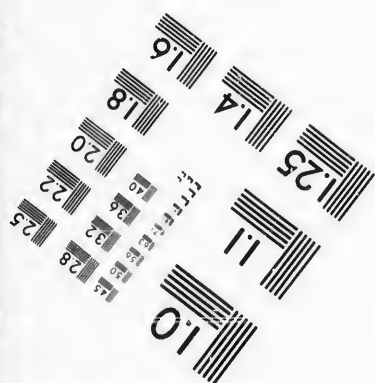
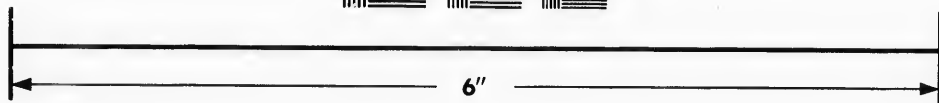
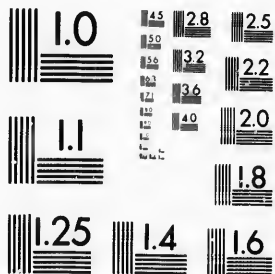


**IMAGE EVALUATION
TEST TARGET (MT-3)**



**Photographic
Sciences
Corporation**

23 WEST MAIN STREET
WEBSTER, N.Y. 14580
(716) 872-4503

15 28
16 32 25
18 22
20 25
22 25
25 25
28 25
32 25
36 25
40 25
44 25
48 25
52 25
56 25
60 25
64 25
68 25
72 25
76 25
80 25
84 25
88 25
92 25
96 25
100 25

**CIHM/ICMH
Microfiche
Series.**

**CIHM/ICMH
Collection de
microfiches.**



Canadian Institute for Historical Microreproductions / Institut canadien de microreproductions historiques

10

© 1987

Technical and Bibliographic Notes/Notes techniques et bibliographiques

The Institute has attempted to obtain the best original copy available for filming. Features of this copy which may be bibliographically unique, which may alter any of the images in the reproduction, or which may significantly change the usual method of filming, are checked below.

L'Institut a microfilmé le meilleur exemplaire qu'il lui a été possible de se procurer. Les détails de cet exemplaire qui sont peut-être uniques du point de vue bibliographique, qui peuvent modifier une image reproduite, ou qui peuvent exiger une modification dans la méthode normale de filmage sont indiqués ci-dessous.

- Coloured covers/
Couverture de couleur
- Covers damaged/
Couverture endommagée
- Covers restored and/or laminated/
Couverture restaurée et/ou pelliculée
- Cover title missing/
Le titre de couverture manque
- Coloured maps/
Cartes géographiques en couleur
- Coloured ink (i.e. other than blue or black)/
Encre de couleur (i.e. autre que bleue ou noire)
- Coloured plates and/or illustrations/
Planches et/ou illustrations en couleur
- Bound with other material/
Relié avec d'autres documents
- Tight binding may cause shadows or distortion along interior margin/
La reliure serrée peut causer de l'ombre ou de la distorsion le long de la marge intérieure
- Blank leaves added during restoration may appear within the text. Whenever possible, these have been omitted from filming/
Il se peut que certaines pages blanches ajoutées lors d'une restauration apparaissent dans le texte, mais, lorsque cela était possible, ces pages n'ont pas été filmées.
- Additional comments:/ [Printed ephemera] 1 sheet (verso blank)
Commentaires supplémentaires:

- Coloured pages/
Pages de couleur
- Pages damaged/
Pages endommagées
- Pages restored and/or laminated/
Pages restaurées et/ou pelliculées
- Pages discoloured, stained or foxed/
Pages décolorées, tachetées ou piquées
- Pages detached/
Pages détachées
- Showthrough/
Transparence
- Quality of print varies/
Qualité inégale de l'impression
- Includes supplementary material/
Comprend du matériel supplémentaire
- Only edition available/
Seule édition disponible
- Pages wholly or partially obscured by errata slips, tissues, etc.. have been refilmed to ensure the best possible image/
Les pages totalement ou partiellement obscurcies par un feuillet d'errata, une pelure, etc., ont été filmées à nouveau de façon à obtenir la meilleure image possible.

This item is filmed at the reduction ratio checked below/
Ce document est filmé au taux de réduction indiqué ci-dessous.

10X	12X	14X	16X	18X	20X	22X	24X	26X	28X	30X	32X
<input type="checkbox"/>	<input type="checkbox"/>	<input type="checkbox"/>	<input type="checkbox"/>	<input type="checkbox"/>	<input type="checkbox"/>	<input checked="" type="checkbox"/>	<input type="checkbox"/>	<input type="checkbox"/>	<input type="checkbox"/>	<input type="checkbox"/>	<input type="checkbox"/>

The copy filmed here has been reproduced thanks to the generosity of:

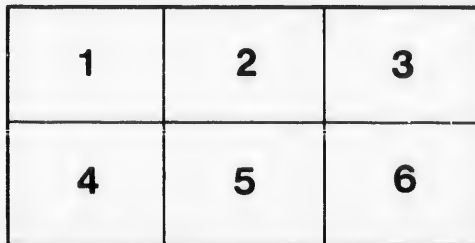
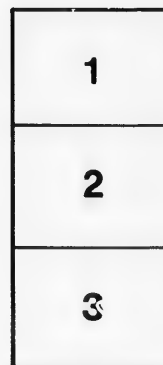
Douglas Library
Queen's University

The images appearing here are the best quality possible considering the condition and legibility of the original copy and in keeping with the filming contract specifications.

Original copies in printed paper covers are filmed beginning with the front cover and ending on the last page with a printed or illustrated impression, or the back cover when appropriate. All other original copies are filmed beginning on the first page with a printed or illustrated impression, and ending on the last page with a printed or illustrated impression.

The last recorded frame on each microfiche shall contain the symbol \rightarrow (meaning "CONTINUED"), or the symbol ∇ (meaning "END"), whichever applies.

Maps, plates, charts, etc., may be filmed at different reduction ratios. Those too large to be entirely included in one exposure are filmed beginning in the upper left hand corner, left to right and top to bottom, as many frames as required. The following diagrams illustrate the method:



L'exemplaire filmé fut reproduit grâce à la générosité de:

Douglas Library
Queen's University

Les images suivantes ont été reproduites avec le plus grand soin, compte tenu de la condition et de la netteté de l'exemplaire filmé, et en conformité avec les conditions du contrat de filmage.

Les exemplaires originaux dont la couverture en papier est imprimée sont filmés en commençant par le premier plat et en terminant soit par la dernière page qui comporte une empreinte d'impression ou d'illustration, soit par le second plat, selon le cas. Tous les autres exemplaires originaux sont filmés en commençant par la première page qui comporte une empreinte d'impression ou d'illustration et en terminant par la dernière page qui comporte une telle empreinte.

Un des symboles suivants apparaîtra sur la dernière image de chaque microfiche, selon le cas: le symbole \rightarrow signifie "A SUIVRE", le symbole ∇ signifie "FIN".

Les cartes, planches, tableaux, etc., peuvent être filmés à des taux de réduction différents. Lorsque le document est trop grand pour être reproduit en un seul cliché, il est filmé à partir de l'angle supérieur gauche, de gauche à droite, et de haut en bas, en prenant le nombre d'images nécessaire. Les diagrammes suivants illustrent la méthode.

REVEREND

at its last
ficiaries, an
respectively
the payme
minion Le
solved to r
with the p
same, so lo

I have
\$.
each instal
both includ
Widows' a
\$.

Permit
ments was
of the fund
"vested rig
that a copy
objections t
met their a
be regarded
the Tempor

You are
sary in orde
trusted to th
the portion o
hausted dur
however, tha
the rights an

TEMPORALITIES' BOARD.

(Presbyterian Church of Canada in connection with the Church of Scotland.)

198 ST. JAMES STREET,
MONTREAL, 31st December, 1891.

REVEREND AND DEAR SIR,

In accordance with the intimation already made to you, the Board at its last meeting unanimously resolved to pay the "non-privileged" beneficiaries, and their representatives, the arrears that have become due to them respectively, since December, 1883, amounting to twenty-five per centum of the payments to which they were severally entitled under the Act of the Dominion Legislature regulating the administration of the fund. It was also resolved to resume full payments to the ministers now on the roll, commencing with the payments falling due on 31st December, 1891, and to continue the same, so long as the funds at the disposal of the Board will permit.

I have therefore been instructed to remit to you at this time, the sum of \$..... in full payment of the arrears due to you, being 25 per cent. of each instalment of the half-yearly payments from December, 1883, to June, 1891, both inclusive, and the sum of \$..... (less \$6.00 for the Ministers' Widows' and Orphans' Fund,) for the current half-year, making together \$.....

Permit me to say that the resolution of the Board authorizing these payments was based on a very careful investigation of the prospective capabilities of the fund, by a competent actuary, after making ample provision for the "vested rights" of the "commuting and privileged ministers"; and, further, that a copy of said resolution having been sent to all parties interested, and no objections to the proposal having been offered, it is held by the Board, to have met their approval. Your indorsation of the cheque herewith, will therefore be regarded by the Board as a full discharge of all arrears and payments from the Temporalities' Board, due you up to date, 31st December, 1891.

You are respectfully requested to bear in mind, that, as it will be necessary in order to the carrying out of this resolution, to reduce the capital entrusted to the management of the Board, from year to year, it is possible that the portion of the fund reserved and set apart for these payments may be exhausted during the lives of some of the beneficiaries; you may rest assured, however, that the Board will continue to use its utmost diligence to conserve the rights and privileges of all the beneficiaries.

Very respectfully yours,

JAMES CROIL,
Secretary-Treasurer.

