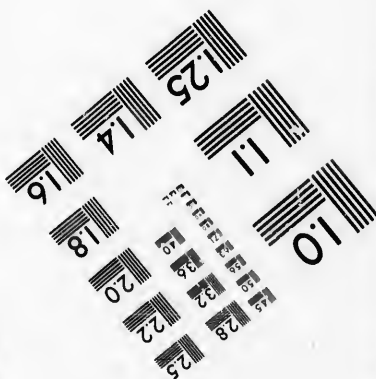
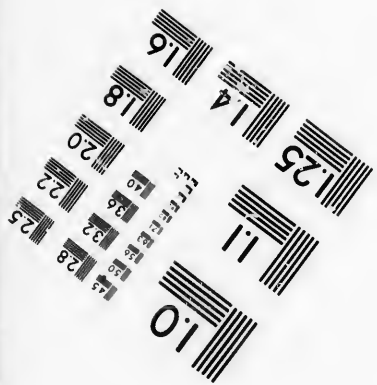
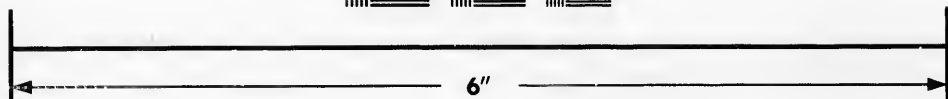
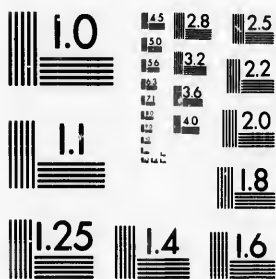


**IMAGE EVALUATION  
TEST TARGET (MT-3)**



**Photographic  
Sciences  
Corporation**

23 WEST MAIN STREET  
WEBSTER, N.Y. 14580  
(716) 872-4503

1.8  
2.0  
2.2  
2.5  
2.8  
3.2  
3.6  
4.0  
4.5  
5.0

**CIHM/ICMH  
Microfiche  
Series.**

**CIHM/ICMH  
Collection de  
microfiches.**



Canadian Institute for Historical Microreproductions / Institut canadien de microreproductions historiques

1.0  
1.2  
1.5  
1.8  
2.0  
2.2  
2.5  
2.8  
3.2  
3.6  
4.0  
4.5  
5.0

**© 1986**

Technical and Bibliographic Notes/Notes techniques et bibliographiques

The Institute has attempted to obtain the best original copy available for filming. Features of this copy which may be bibliographically unique, which may alter any of the images in the reproduction, or which may significantly change the usual method of filming, are checked below.

L'Institut a microfilmé le meilleur exemplaire qu'il lui a été possible de se procurer. Les détails de cet exemplaire qui sont peut-être uniques du point de vue bibliographique, qui peuvent modifier une image reproduite, ou qui peuvent exiger une modification dans la méthode normale de filmage sont indiqués ci-dessous.

- Coloured covers/  
Couverture de couleur
- Covers damaged/  
Couverture endommagée
- Covers restored and/or laminated/  
Couverture restaurée et/ou pelliculée
- Cover title missing/  
Le titre de couverture manque
- Coloured maps/  
Cartes géographiques en couleur
- Coloured ink (i.e. other than blue or black)/  
Encre de couleur (i.e. autre que bleue ou noire)
- Coloured plates and/or illustrations/  
Planches et/ou illustrations en couleur
- Bound with other material/  
Relié avec d'autres documents
- Tight binding may cause shadows or distortion along interior margin/  
La reliure serrée peut causer de l'ombre ou de la distorsion le long de la marge intérieure
- Blank leaves added during restoration may appear within the text. Whenever possible, these have been omitted from filming/  
Il se peut que certaines pages blanches ajoutées lors d'une restauration apparaissent dans le texte, mais, lorsque cela était possible, ces pages n'ont pas été filmées.

- Coloured pages/  
Pages de couleur
- Pages damaged/  
Pages endommagées
- Pages restored and/or laminated/  
Pages restaurées et/ou pelliculées
- Pages discoloured, stained or foxed/  
Pages décolorées, tachetées ou piquées
- Pages detached/  
Pages détachées
- Showthrough/  
Transparence
- Quality of print varies/  
Qualité inégale de l'impression
- Includes supplementary material/  
Comprend du matériel supplémentaire
- Only edition available/  
Seule édition disponible
- Pages wholly or partially obscured by errata slips, tissues, etc., have been refilmed to ensure the best possible image/  
Les pages totalement ou partiellement obscurcies par un feuillet d'errata, une pelure, etc., ont été filmées à nouveau de façon à obtenir la meilleure image possible.

Additional comments:  
Commentaires supplémentaires:

[Printed ephemera] 1 sheet (verso blank)

This item is filmed at the reduction ratio checked below/  
Ce document est filmé au taux de réduction indiqué ci-dessous.

10X	12X	14X	16X	18X	20X	22X	24X	26X	28X	30X	32X
								✓			

The copy filmed here has been reproduced thanks to the generosity of:

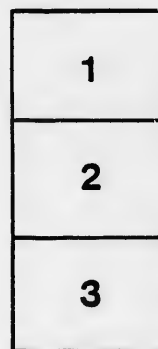
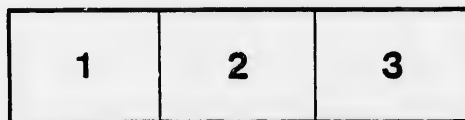
Department of Rare Books  
and Special Collections,  
McGill University, Montreal.

The images appearing here are the best quality possible considering the condition and legibility of the original copy and in keeping with the filming contract specifications.

Original copies in printed paper covers are filmed beginning with the front cover and ending on the last page with a printed or illustrated impression, or the back cover when appropriate. All other original copies are filmed beginning on the first page with a printed or illustrated impression, and ending on the last page with a printed or illustrated impression.

The last recorded frame on each microfiche shall contain the symbol  $\rightarrow$  (meaning "CONTINUED"), or the symbol  $\nabla$  (meaning "END"), whichever applies.

Maps, plates, charts, etc., may be filmed at different reduction ratios. Those too large to be entirely included in one exposure are filmed beginning in the upper left hand corner, left to right and top to bottom, as many frames as required. The following diagrams illustrate the method:



L'exemplaire filmé fut reproduit grâce à la générosité de:

Department of Rare Books  
and Special Collections,  
McGill University, Montreal.

Les images suivantes ont été reproduites avec le plus grand soin, compte tenu de la condition et de la netteté de l'exemplaire filmé, et en conformité avec les conditions du contrat de filmage.

Les exemplaires originaux dont la couverture en papier est imprimée sont filmés en commençant par le premier plat et en terminant soit par la dernière page qui comporte une empreinte d'impression ou d'illustration, soit par le second plat, selon le cas. Tous les autres exemplaires originaux sont filmés en commençant par la première page qui comporte une empreinte d'impression ou d'illustration et en terminant par la dernière page qui comporte une telle empreinte.

Un des symboles suivants apparaîtra sur la dernière image de chaque microfiche, selon le cas: le symbole  $\rightarrow$  signifie "A SUIVRE", le symbole  $\nabla$  signifie "FIN".

Les cartes, planches, tableaux, etc., peuvent être filmés à des taux de réduction différents. Lorsque le document est trop grand pour être reproduit en un seul cliché, il est filmé à partir de l'angle supérieur gauche, de gauche à droite, et de haut en bas, en prenant le nombre d'images nécessaires. Les diagrammes suivants illustrent la méthode.

LIST OF SHAREHOLDERS

— OF THE —

CANADA SHIPPING COMPANY,

ON THE 30th MAY, 1894.

NAMES.	RESIDENCE.	NO. OF SHARES.	NAMES.	RESIDENCE.	NO. OF SHARES.
Anderson, Robert.....	Montreal.....	249	Mackay, Hugh, Estate.....	Montreal.....	700
Atwater, E. & Co.....	do.....	40	Mackay, Estate Edw.....	do.....	60
Allan, Mrs. A. S.....	do.....	1	Mackay, Hugh (in trust).....	do.....	240
Barrett, Mrs. M. A. E. M.....	Edinburgh.....	50	McLennan, Hugh S.....	do.....	6
Bibby, Arthur.....	Liverpool.....	40	McLennan, Aliee.....	do.....	2
Bingham, Wm.....	do.....	50	McLennan, Bartlett.....	do.....	2
Botterell, Edmund H.....	Montreal.....	30	McLennan, John, Prest. (in trust).....	do.....	120
Botterell, John H.....	do.....	30	MacDougall Bros.....	do.....	169
Buntin, Estate Alex.....	do.....	947	MacDougall Bros. (in trust).....	do.....	50
Bolton, Richard.....	do.....	18	MacDougall, (Est. late Geo. Campbell).....	do.....	55
Buntin, Alex., Jr.....	do.....	100	Meredith, J. S., Manager (in trust).....	do.....	510
Blackader, Mrs. R. L.....	do.....	2	Macfarlane, Mrs. C.....	do.....	5
Blackader, W. B.....	do.....	10	McLennan, Neil.....	do.....	5
Campbell, R., Estate.....	Montreal.....	90	McLeod, Mrs. Mary E.....	do.....	118
Campbell, Trustees Estate Geo. W., } M. D., and Selkirk Cross, (in trust) }	do.....	16	MacIntosh, Isabella G. and Annabella.....	do.....	50
Clarke, Mrs. Caroline.....	do.....	2	Malcolm, Mrs. Elizabeth.....	do.....	12
Clerk, Alex.....	do.....	25	Marler, G. R.....	do.....	5
*Crathern, Jas.....	do.....	150	McArthur, John.....	do.....	60
Cross, Alex.....	do.....	6	McKenzie, M.....	do.....	60
Cruikshanks, Geo.....	do.....	24	*McLennan, Hugh.....	do.....	798
Caverhill, Estate Thos.....	do.....	50	McLennan, John, Estate.....	Lancaster	500
Caverhill, Estate John.....	do.....	25	McLennan, Wm.....	Montreal.....	12
Caverhill, Emily M.....	do.....	25	McLennan, Hugh (in trust).....	do.....	5
Caverhill, Frank.....	do.....	10	McLennan, Francis.....	do.....	10
Caverhill, George.....	do.....	5.5	Montreal Assurance Co.....	do.....	17
Caverhill, John B.....	do.....	5	Murray, Estate Wm.....	do.....	2577
Caverhill, John.....	do.....	5	Murray, Alex., Estate.....	do.....	478
Caverhill, W. C.....	do.....	5	Murray, Wm. G.....	do.....	300
Chenev, Gilman.....	do.....	100	*Murray, H. E.....	do.....	165
Clayes, Mrs. S. L.....	Bedford, P. Q.....	39	Murray, Mrs. Agnes T. (wife of Wm. } Hall).....	do.....	34
Campbell, Lorne.....	Montreal.....	40	Murray, Annabella.....	do.....	99
Campbell, Corgina J., wife of Edward } Kahau.....	do.....	40	Murray, Grace.....	do.....	151
Campbell, Miss M.....	do.....	2	Murray, John and William G. Murray } (in trust).....	do.....	33
Campbell, Miss E.....	do.....	2	Murray, Walter G. & Wm. G. Murray } (in trust).....	do.....	40
Campbell, Miss S.....	do.....	2	Mussen, Thos.....	do.....	24
Campbell, Executors Estate late Robert } Crombie, A. M., Manager in trust.....	do.....	6	Montreal City & District Savings' Bank } Moncrieff, Revd. Wm. Scott & John P. } Wood, Trustees.....	do.....	12
Cleghorn, H.....	do.....	72		Edinburgh.....	40
	do.....	50	Nichols, John (in trust).....	Montreal.....	10
Dow, Estate Wm.....	do.....	240	Nickle, Mrs. Ellen Mary.....	Montreal.....	89
Elliott, Jas. and H. Markland Molson } (in trust for Molsons' Bank).....	Montreal.....	20	Newman, Thos. Hy.....	Montreal.....	5
French, Robert.....	do.....	10	Newman, Frank W.....	do.....	5
Frothingham, Estate G. H.....	do.....	158	Nichols & Marler.....	do.....	18
Frothingham & Workman.....	do.....	3	Nelles, R. Campbell (in trust).....	do.....	2
Gilchrist, Chas. Scott.....	Liverpool.....	60	Nelles, J. Widmer.....	do.....	1
Gault, A. F.....	Montreal.....	72	Nelles, R. Campbell.....	do.....	1
Gault, Leslie H. and Hugh A. Allan } (in trust).....	do.....	100	Nickle, Wm. Folger.....	Kingston.....	40
Greene, E. K.....	do.....	20	*O'Brien, Jas.....	Montreal.....	60
Gault, Mrs. Eliz. J., tatrix.....	do.....	4	Payne, F. G.....	Montreal.....	18
Gault, Leslie H.....	do.....	2	Putnam, H. L.....	do.....	1
Gault, Miss E. M.....	do.....	2	Reid, Wm.....	Montreal.....	60
Gault, Chas. E.....	do.....	1	Rimmer, John H.....	Liverpool.....	36
Gault, Miss M. F.....	do.....	1	Rimmer, Naomi.....	do.....	36
Hamilton, Geo. C., Estate.....	Montreal.....	39	Rimmer, Martha Isabella.....	do.....	36
Henderson, P. R.....	Kingston.....	60	Rimmer, Samuel D.....	do.....	42
*Hodgson, Jonathan.....	Montreal.....	162	Rimmer, Estate Edw'd.....	do.....	150
Howard, R. P., M. D., Estate.....	do.....	24	*Rintoul, Andrew.....	Glasgow.....	84
*Hyde, Geo.....	do.....	40	Rintoul, Robt., Jr.....	do.....	84
Idler, Estate Ernest.....	Montreal.....	167	Rintoul, Andrew, Jr.....	do.....	120
Idler, J. A.....	do.....	18	Roy, Adolphe.....	Montreal.....	15
Ibbotson, Mrs. F. L.....	do.....	1	Scott, D.....	do.....	2
King, E. H.....	Montreal.....	360	Scott, H. C.....	do.....	25
Kinghorn, G. M.....	do.....	144	Sumner, Geo.....	do.....	12
*Lemoine, McPherson.....	Montreal.....	180	Simpson, Geo. W.....	do.....	25
Lyman, Henry.....	do.....	145	Scott, Estate Gilbert.....	do.....	55
Lyman, Sons & Co.....	do.....	10	Thom, James.....	do.....	30
Lyman H. (in trust M. C. Lyman).....	do.....	59	Thomas, F. W.....	do.....	40
Lyman, Henry H.....	do.....	10	Urquhart, Alex.....	do.....	620
Lyman, Roswell C.....	do.....	10	Urquhart, Marcella H.....	do.....	12
Lunn, Julia, wife of Alex. Cross.....	do.....	60	Walters, Rev. Geo. Radley.....	Malbaie, Gaspe.....	20
			Walters, Rev. J., Estate.....	Montreal.....	36
			Williams, Miles, Estate.....	do.....	105

Present Directors are marked with an \*, and are eligible for re-election.

