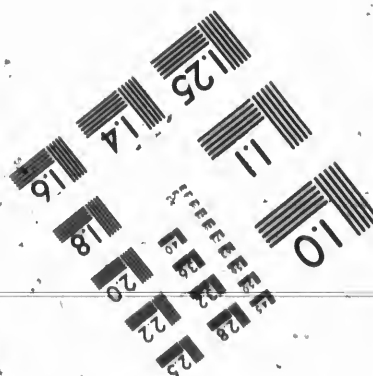
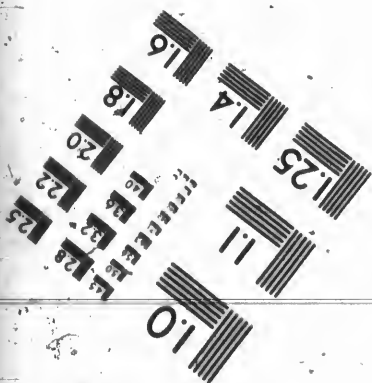
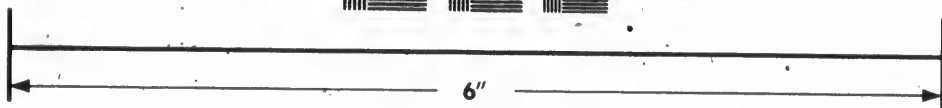
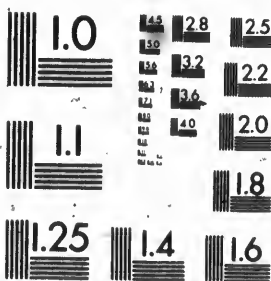


**IMAGE EVALUATION
TEST TARGET (MT-3)**



**Photographic
Sciences
Corporation**

23 WEST MAIN STREET
WEBSTER, N.Y. 14580
(716) 872-4503

**CIHM/ICMH
Microfiche
Series.**

**CIHM/ICMH
Collection de
microfiches.**



Canadian Institute for Historical Microreproductions / Institut canadien de microreproductions historiques

© 1986

laire
s détails
ques du
nt modifier
iger une
e filmage

The copy filmed here has been reproduced thanks to the generosity of:

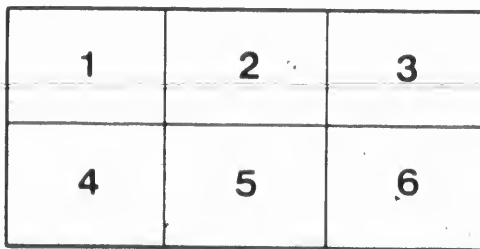
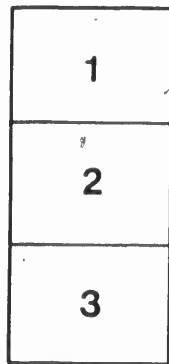
D. B. Weldon Library
University of Western Ontario
(Regional History Room)

The images appearing here are the best quality possible considering the condition and legibility of the original copy and in keeping with the filming contract specifications.

Original copies in printed paper covers are filmed beginning with the front cover and ending on the last page with a printed or illustrated impression, or the back cover when appropriate. All other original copies are filmed beginning on the first page with a printed or illustrated impression, and ending on the last page with a printed or illustrated impression.

The last recorded frame on each microfiche shall contain the symbol \rightarrow (meaning "CONTINUED"), or the symbol ∇ (meaning "END"), whichever applies.

Maps, plates, charts, etc., may be filmed at different reduction ratios. Those too large to be entirely included in one exposure are filmed beginning in the upper left hand corner, left to right and top to bottom, as many frames as required. The following diagrams illustrate the method:



L'exemplaire filmé fut reproduit grâce à la générosité de:

D. B. Weldon Library
University of Western Ontario
(Regional History Room)

Les images suivantes ont été reproduites avec le plus grand soin, compte tenu de la condition et de la netteté de l'exemplaire filmé, et en conformité avec les conditions du contrat de filmage.

Les exemplaires originaux dont la couverture en papier est imprimée sont filmés en commençant par le premier plat et en terminant soit par la dernière page qui comporte une empreinte d'impression ou d'illustration, soit par le second plat, selon le cas. Tous les autres exemplaires originaux sont filmés en commençant par la première page qui comporte une empreinte d'impression ou d'illustration et en terminant par la dernière page qui comporte une telle empreinte.

Un des symboles suivants apparaîtra sur la dernière image de chaque microfiche, selon le cas: le symbole \rightarrow signifie "A SUIVRE", le symbole ∇ signifie "FIN".

Les cartes, planches, tableaux, etc., peuvent être filmés à des taux de réduction différents. Lorsque le document est trop grand pour être reproduit en un seul cliché, il est filmé à partir de l'angle supérieur gauche, de gauche à droite, et de haut en bas, en prenant le nombre d'images nécessaire. Les diagrammes suivants illustrent la méthode.

ny errata
ed to

nt
ne pelure,
çon à

1878.

1878.

DOMINION DAY



Grand Celebration

IN GUELPH.

PROGRAMME OF SPORTS!

The Games will commence on the Market Square at 10 a.m.

100 yards FOOT RACE for Men,	\$3, 2nd \$2
100 yards FOOT RACE for Boys under 14 years,	2 " 1
300 yards FOOT RACE for Men,	3 " 2

AT 11.30 A.M.

FORESTERS' PARADE

From the G. T. Station to the Exhibition Grounds.

Sack Race (100 yards)	\$3, \$2, \$0
Whodibarrow Race (blindfold)	3 2 1

AT 1 P.M.

Kalithumpian Krew

KALITHUMPIAN KREW

AT 1 P.M.

Kalithumpian Krew

Kalithumpian Krew

Will enter the town and parade through the principal streets. The following prizes will be awarded under the supervision of a competent Committee:

Best dressed Kalithumpian	\$5
Worst dressed Kalithumpian	5
Most ridiculously dressed Kalithumpian	5
Best group in carriage	6

AT 3 P.M.

BASE BALL MATCH

BETWEEN THE RENOWNED

STARS, of Syracuse, N.Y., and MAPLE LEAFS, Guelph,

AT 8.30.

A Grand Torchlight Procession

From the Market Square through the principal Streets,

TO BE FOLLOWED BY A MAGNIFICENT DISPLAY OF

FIRE-WORKS

On the Square, by PROF. HAND.

THE DAY'S AMUSEMENTS WILL CONCLUDE WITH

A Monster Bonfire!

GOD SAVE THE QUEEN AND LORD DUFFERIN.

Guelph Mercury Steam Press.

