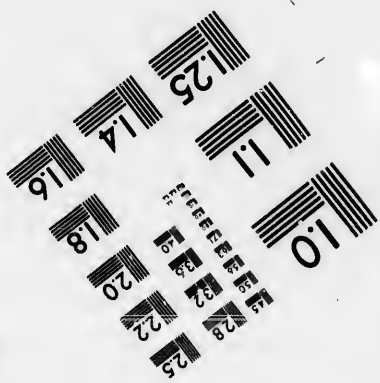
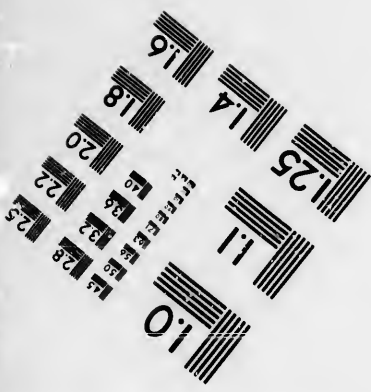
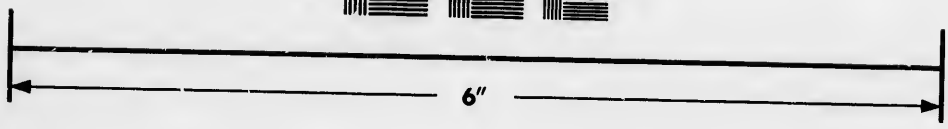
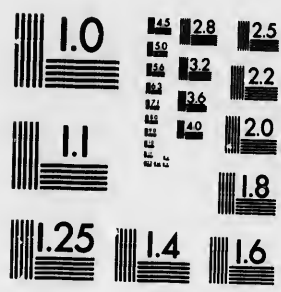


**IMAGE EVALUATION
TEST TARGET (MT-3)**



**Photographic
Sciences
Corporation**

23 WEST MAIN STREET
WEBSTER, N.Y. 14580
(716) 872-4503

10
16
18
20
22
25
28
32
36
40

**CIHM/ICMH
Microfiche
Series.**

**CIHM/ICMH
Collection de
microfiches.**



Canadian Institute for Historical Microreproductions / Institut canadien de microreproductions historiques

10
16
18
20
22
25
28
32
36
40

© 1986

Technical and Bibliographic Notes/Notes techniques et bibliographiques

The Institute has attempted to obtain the best original copy available for filming. Features of this copy which may be bibliographically unique, which may alter any of the images in the reproduction, or which may significantly change the usual method of filming, are checked below.

L'Institut a microfilmé le meilleur exemplaire qu'il lui a été possible de se procurer. Les détails de cet exemplaire qui sont peut-être uniques du point de vue bibliographique, qui peuvent modifier une image reproduite, ou qui peuvent exiger une modification dans la méthode normale de filmage sont indiqués ci-dessous.

- | | |
|--|--|
| <input checked="" type="checkbox"/> Coloured covers/
Couverture de couleur | <input type="checkbox"/> Coloured pages/
Pages de couleur |
| <input type="checkbox"/> Covers damaged/
Couverture endommagée | <input type="checkbox"/> Pages damaged/
Pages endommagées |
| <input type="checkbox"/> Covers restored and/or laminated/
Couverture restaurée et/ou pelliculée | <input type="checkbox"/> Pages restored and/or laminated/
Pages restaurées et/ou pelliculées |
| <input type="checkbox"/> Cover title missing/
Le titre de couverture manque | <input checked="" type="checkbox"/> Pages discoloured, stained or foxed/
Pages décolorées, tachetées ou piquées |
| <input type="checkbox"/> Coloured maps/
Cartes géographiques en couleur | <input checked="" type="checkbox"/> Pages detached/
Pages détachées |
| <input type="checkbox"/> Coloured ink (i.e. other than blue or black)/
Encre de couleur (i.e. autre que bleue ou noire) | <input checked="" type="checkbox"/> Showthrough/
Transparence |
| <input type="checkbox"/> Coloured plates and/or illustrations/
Planches et/ou illustrations en couleur | <input type="checkbox"/> Quality of print varies/
Qualité inégale de l'impression |
| <input type="checkbox"/> Bound with other material/
Relié avec d'autres documents | <input type="checkbox"/> Includes supplementary material/
Comprend du matériel supplémentaire |
| <input type="checkbox"/> Tight binding may cause shadows or distortion
along interior margin/
La reliure serrée peut causer de l'ombre ou de la
distorsion le long de la marge intérieure | <input type="checkbox"/> Only edition available/
Seule édition disponible |
| <input type="checkbox"/> Blank leaves added during restoration may
appear within the text. Whenever possible, these
have been omitted from filming/
Il se peut que certaines pages blanches ajoutées
lors d'une restauration apparaissent dans le texte,
mais, lorsque cela était possible, ces pages n'ont
pas été filmées. | <input type="checkbox"/> Pages wholly or partially obscured by errata
slips, tissues, etc., have been refilmed to
ensure the best possible image/
Les pages totalement ou partiellement
obscurcies par un feuillet d'errata, une pelure,
etc., ont été filmées à nouveau de façon à
obtenir la meilleure image possible. |
| <input type="checkbox"/> Additional comments:/
Commentaires supplémentaires: | |

This item is filmed at the reduction ratio checked below/
Ce document est filmé au taux de réduction indiqué ci-dessous.

10X	14X	18X	22X	26X	30X
<input type="checkbox"/>	<input type="checkbox"/>	<input type="checkbox"/>	<input checked="" type="checkbox"/>	<input type="checkbox"/>	<input type="checkbox"/>
12X	16X	20X	24X	28X	32X

The copy filmed here has been reproduced thanks to the generosity of:

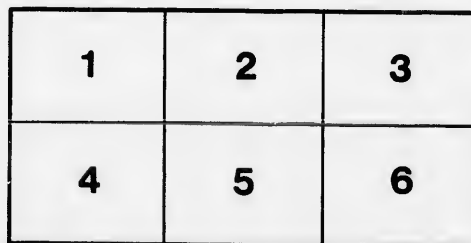
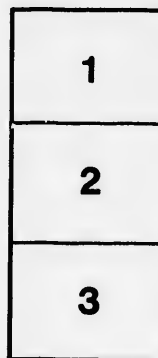
York University
Toronto
Scott Library

The Images appearing here are the best quality possible considering the condition and legibility of the original copy and in keeping with the filming contract specifications.

Original copies in printed paper covers are filmed beginning with the front cover and ending on the last page with a printed or illustrated impression, or the back cover when appropriate. All other original copies are filmed beginning on the first page with a printed or illustrated impression, and ending on the last page with a printed or illustrated impression.

The last recorded frame on each microfiche shall contain the symbol \rightarrow (meaning "CONTINUED"), or the symbol ∇ (meaning "END"), whichever applies.

Maps, plates, charts, etc., may be filmed at different reduction ratios. Those too large to be entirely included in one exposure are filmed beginning in the upper left hand corner, left to right and top to bottom, as many frames as required. The following diagrams illustrate the method:



L'exemplaire filmé fut reproduit grâce à la générosité de:

York University
Toronto
Scott Library

Les Images suivantes ont été reproduites avec le plus grand soin, compte tenu de la condition et de la netteté de l'exemplaire filmé, et en conformité avec les conditions du contrat de filmage.

Les exemplaires originaux dont la couverture en papier est imprimée sont filmés en commençant par le premier plat et en terminant soit par la dernière page qui comporte une empreinte d'impression ou d'illustration, soit par le second plat, selon le cas. Tous les autres exemplaires originaux sont filmés en commençant par la première page qui comporte une empreinte d'impression ou d'illustration et en terminant par la dernière page qui comporte une telle empreinte.

Un des symboles suivants apparaîtra sur la dernière image de chaque microfiche, selon le cas: le symbole \rightarrow signifie "A SUIVRE", le symbole ∇ signifie "FIN".

Les cartes, planches, tableaux, etc., peuvent être filmés à des taux de réduction différents. Lorsque le document est trop grand pour être reproduit en un seul cliché, il est filmé à partir de l'angle supérieur gauche, de gauche à droite, et de haut en bas, en prenant le nombre d'images nécessaire. Les diagrammes suivants illustrent la méthode.

ire
détails
es du
modifier
er une
filmage

es

errata
to

pelure,
on à

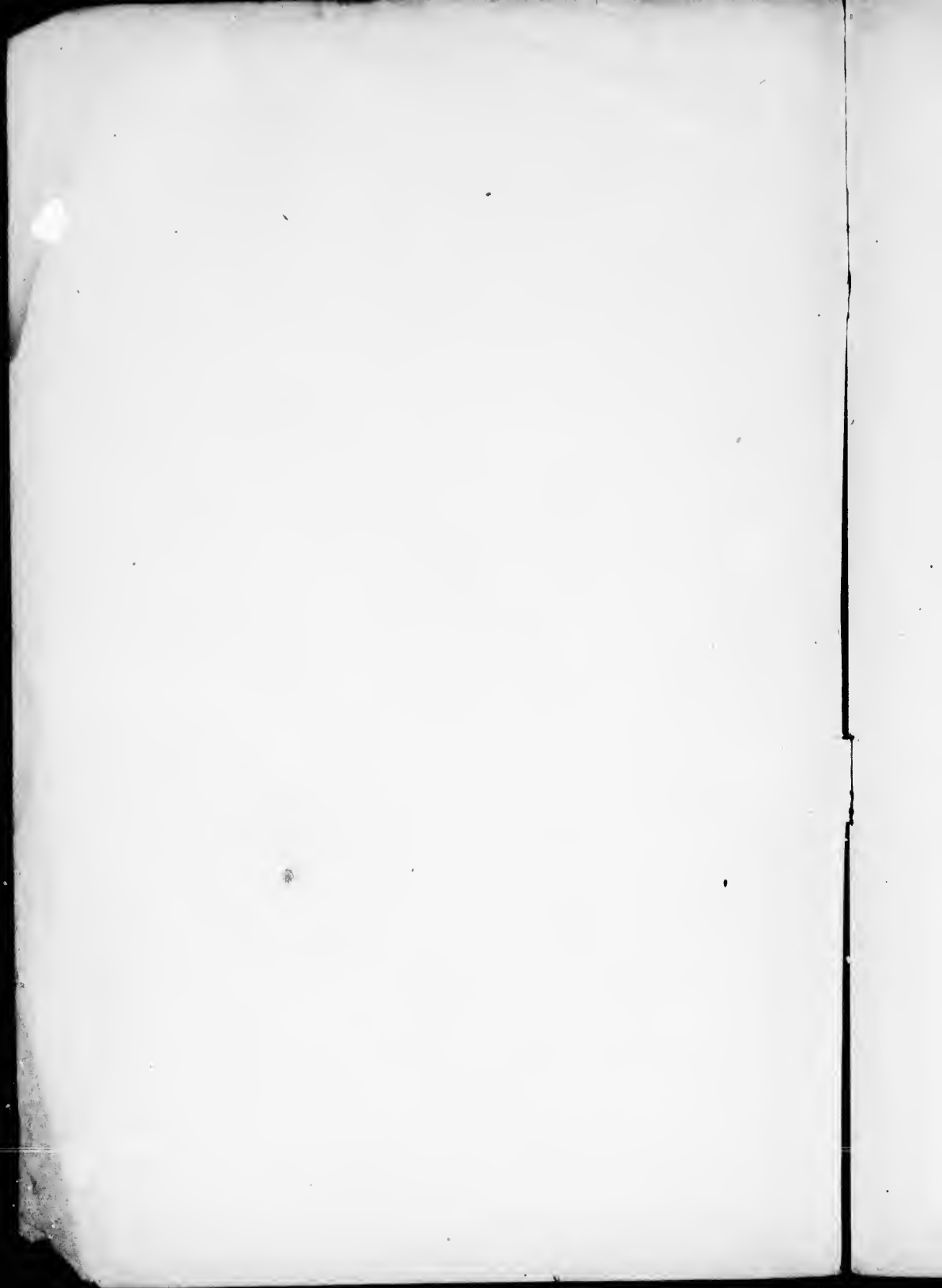
32X

1894.

MINERAL PRODUCTION OF CANADA.

1894.

MINERAL PRODUCTION OF CANADA.



GEOLOGICAL SURVEY OF CANADA.

G. M. DAWSON, C.M.G., LL.D., F.R.S., DIRECTOR.

MINERAL STATISTICS AND MINES

SUMMARY

OF THE

MINERAL PRODUCTION OF CANADA

FOR

1894.

ELFRIC DREW INGALL, M.E.

*Associate of the Royal School of Mines, England,
Mining Engineer to the Geological Survey of Canada.*

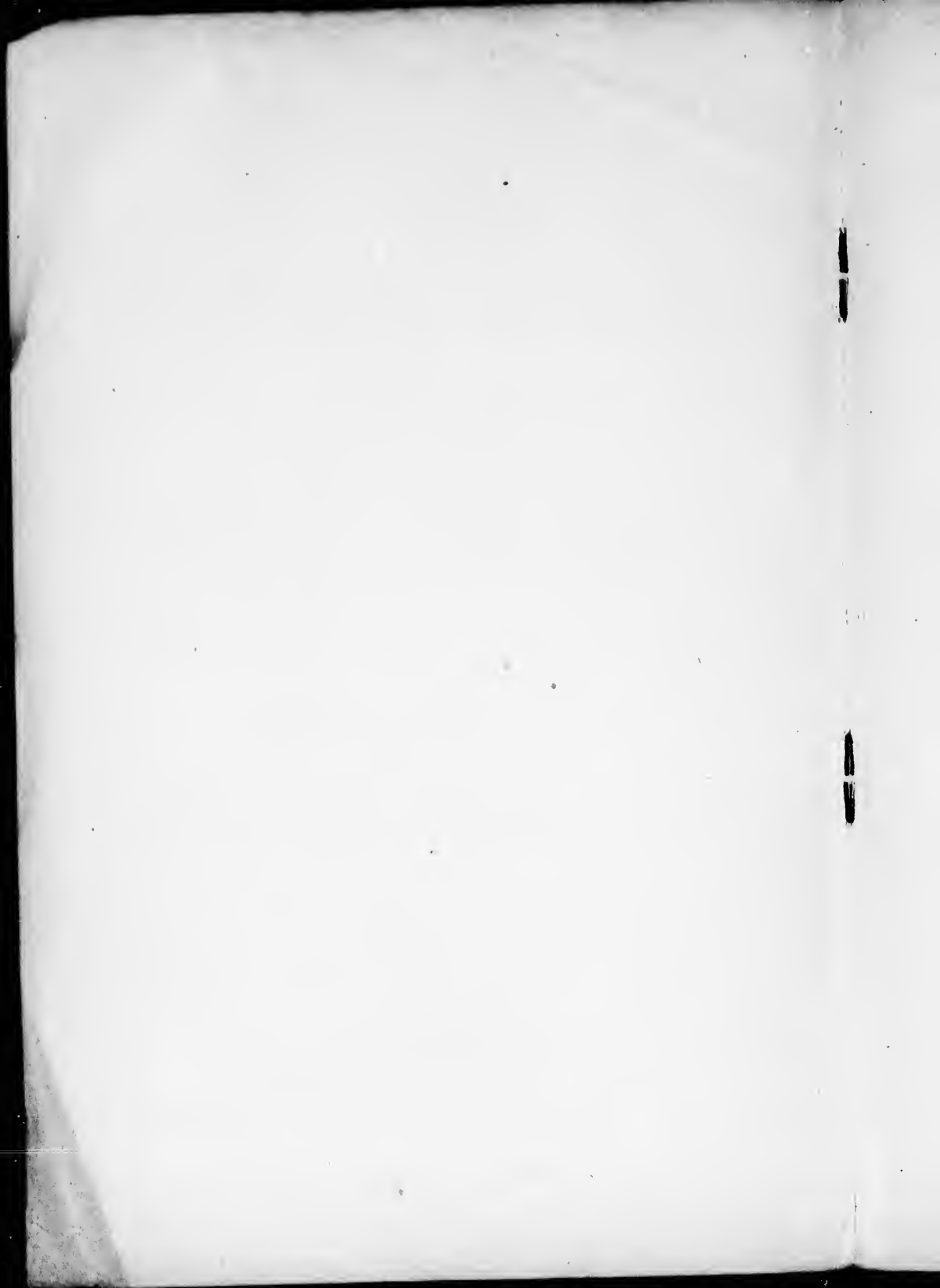
H. P. BRUMELL, F.G.S.A.

Assistant.



PUBLISHED BY AUTHORITY OF PARLIAMENT.

No. 555.



TO G. M. DAWSON, C.M.G., LL.D., F.R.S., ETC.

Director of the Geological Survey.

SIR,—I have the honour to submit herewith the annual Preliminary Statistical Table of the Mineral Production of Canada.

As shown in the explanatory notes attached to the table, some of the returns are estimated. The figures given, however, are close approximations and will be revised when re-issued later with the complete report of the Division for the year.

This report will as usual contain further statistical details regarding the various mineral industries, as well as the most recent available information regarding mineral discovery and development in Canada.

I am, Sir,

Your obedient servant,

ELFRIC DREW INGALL,

Geological Survey of Canada.

(Division of Mineral Statistics and Mines).

30th March, 1895.

SUMMARY OF THE MINERAL PRODUCTION OF CANADA IN 1894.

(Subject to revision.)

PRODUCT.	Quantity (a).	Value.
<i>Metallic.</i>		
Copper (b).....lbs.	8,481,685	\$ 805,760
Gold (c).....ozs.	52,992	95,451
Iron ore (d).....tons.	109,991	224,611
“ , chromic.....“	2,215	36,946
Lead (e).....lbs.	5,792,700	188,262
Nickel (f).....“	4,907,430	2,061,120
Platinum.....“		1,000
Silver (g).....ozs.	649,586	409,239
Total metallic.....		\$4, 733,389
<i>Non-Metallic.</i>		
Arsenic.....tons.	7	\$ 420
Asbestos.....“	7,630	420,825
Coal.....“	3,853,235	8,447,329
Coke (h).....“	57,768	147,861
Fire clay.....“	252	515
Grindstones.....“	3,757	32,717
Gypsum.....“	223,631	202,031
Limestone, flux.....“	35,101	34,347
Lithographic stone.....“	180	30,000
Manganese.....“	74	4,180
* Mica.....“		50,000
Mineral water.....galls.	511,460	95,040
Moulding sand.....tons.	3,074	6,148
Natural gas (j).....“		313,754
Ochres.....tons.	1,155	11,120
Petroleum (k).....bbls.	829,104	835,322
Phosphate (l).....tons.	7,290	43,940
Precious stones.....“		1,500
Pyrites.....tons.	40,527	121,581
Salt.....“	57,199	170,687
Soapstone.....“	916	1,640
Whiting.....bbls.	500	750
<i>Structural Materials.</i>		
* Bricks.....“		\$1,800,000
* Building stone.....“		1,200,000
Cement.....bbls.	107,327	140,659
Flagstones.....sq. ft.	152,700	5,298
Granite.....tons.	16,392	109,936
* Lime.....“		900,000

* Estimated.

SUMMARY OF THE MINERAL PRODUCTION OF CANADA IN 1894--Cont.

(Subject to revision.)

PRODUCT.	Quantity (a).	Value.
<i>Structural Materials.</i>		
Pottery		\$ 113,674
Roofing cement	565 tons.	1,978
Sand and gravels (exports)	324,656 "	86,940
Sewer pipe		250,325
Slate		75,550
Terra-cotta (m)		65,000
* Tiles		200,000
Total non-metallic		\$15,921,867
Total metallic		4,683,389
Estimated value of mineral products not returned, largely structural materials and graphite		294,744
1894. Total		\$20,900,000
1893 "		\$19,250,000
1892 "		19,500,000
1891 "		20,500,000
1890 "		18,000,000
1889 "		14,500,000
1888 "		13,500,000
1887 "		12,500,000
1886 "		12,000,000

- (a) Quantity marketed, except when otherwise specified. Tons are of 2,000 lbs.
 (b) Copper contents of ore, matte, etc., at 9½ cents per lb.
 (c) Nova Scotia and Ontario gold at \$19.50, Quebec at \$18, and British Columbia and Yukon at \$17 per oz.
 (d) Of this quantity 108,871 tons were converted into pig-iron, producing 49,967 tons, valued at the furnaces at \$646,447.
 (e) Lead contents of ore, etc., at 3¼ cents per lb.
 (f) Nickel contents of ore, matte, etc., at 42 cents per lb.
 (g) Silver contents of ore, etc., at 63 cents per oz.
 (h) Oven coke, all the production of Nova Scotia.
 (j) Gross return from sale of gas.
 (k) Calculated from inspection returns, at 100 galls. crude to 38 refined oil, and computed at \$1.00¾ per bbl. of 35 imp. galls. The barrel of refined oil is assumed to contain 42 imp. galls.
 (l) Railway shipments at average price of \$6 per ton.
 (m) Includes structural and ornamental terra-cotta.

* Estimated.

