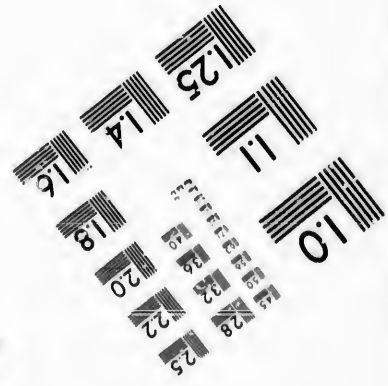
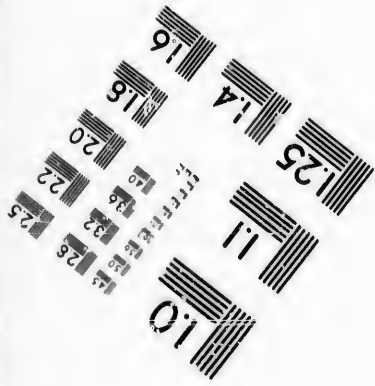
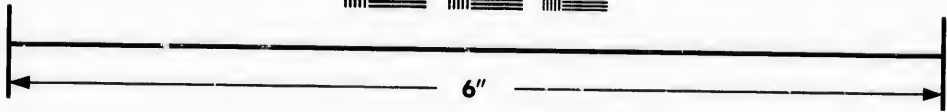
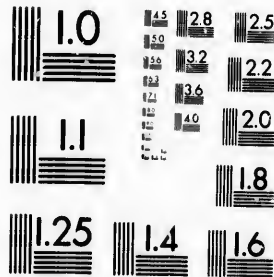


**IMAGE EVALUATION  
TEST TARGET (MT-3)**



**Photographic  
Sciences  
Corporation**

23 WEST MAIN STREET  
WEBSTER, N.Y. 14580  
(716) 872-4503

**CIHM/ICMH  
Microfiche  
Series.**

**CIHM/ICMH  
Collection de  
microfiches.**



Canadian Institute for Historical Microreproductions / Institut canadien de microreproductions historiques

**© 1987**

Technical and Bibliographic Notes/Notes techniques et bibliographiques

The Institute has attempted to obtain the best original copy available for filming. Features of this copy which may be bibliographically unique, which may alter any of the images in the reproduction, or which may significantly change the usual method of filming, are checked below.

L'Institut a microfilmé le meilleur exemplaire qu'il lui a été possible de se procurer. Les détails de cet exemplaire qui sont peut-être uniques du point de vue bibliographique, qui peuvent modifier une image reproduite, ou qui peuvent exiger une modification dans la méthode normale de filmage sont indiqués ci-dessous.

- |  |  |
|--|--|
| <input checked="" type="checkbox"/> Coloured covers/<br>Couverture de couleur  | <input type="checkbox"/> Coloured pages/<br>Pages de couleur   |
| <input type="checkbox"/> Covers damaged/<br>Couverture endommagée  | <input type="checkbox"/> Pages damaged/<br>Pages endommagées   |
| <input type="checkbox"/> Covers restored and/or laminated/<br>Couverture restaurée et/ou pelliculée  | <input type="checkbox"/> Pages restored and/or laminated/<br>Pages restaurées et/ou pelliculées  |
| <input type="checkbox"/> Cover title missing/<br>Le titre de couverture manque   | <input checked="" type="checkbox"/> Pages discoloured, stained or foxed/<br>Pages décolorées, tachetées ou piquées   |
| <input type="checkbox"/> Coloured maps/<br>Cartes géographiques en couleur   | <input type="checkbox"/> Pages detached/<br>Pages détachées  |
| <input type="checkbox"/> Coloured ink (i.e. other than blue or black)/<br>Encre de couleur (i.e. autre que bleue ou noire)   | <input checked="" type="checkbox"/> Showthrough/<br>Transparence   |
| <input type="checkbox"/> Coloured plates and/or illustrations/<br>Planches et/ou illustrations en couleur  | <input type="checkbox"/> Quality of print varies/<br>Qualité inégale de l'impression   |
| <input type="checkbox"/> Bound with other material/<br>Relié avec d'autres documents   | <input type="checkbox"/> Includes supplementary material/<br>Comprend du matériel supplémentaire   |
| <input type="checkbox"/> Tight binding may cause shadows or distortion<br>along interior margin/<br>La reliure serrée peut causer de l'ombre ou de la<br>distorsion le long de la marge intérieure   | <input type="checkbox"/> Only edition available/<br>Seule édition disponible   |
| <input type="checkbox"/> Blank leaves added during restoration may<br>appear within the text. Whenever possible, these<br>have been omitted from filming/<br>Il se peut que certaines pages blanches ajoutées<br>lors d'une restauration apparaissent dans le texte,<br>mais, lorsque cela était possible, ces pages n'ont<br>pas été filmées. | <input type="checkbox"/> Pages wholly or partially obscured by errata<br>slips, tissues, etc., have been refilmed to<br>ensure the best possible image/<br>Les pages totalement ou partiellement<br>obscurcies par un feuillet d'errata, une pelure,<br>etc., ont été filmées à nouveau de façon à<br>obtenir la meilleure image possible. |
| <input type="checkbox"/> Additional comments:/<br>Commentaires supplémentaires:  |  |

This item is filmed at the reduction ratio checked below/  
Ce document est filmé au taux de réduction indiqué ci-dessous.

10X	14X	18X	22X	26X	30X
<input type="checkbox"/>	<input type="checkbox"/>	<input type="checkbox"/>	<input checked="" type="checkbox"/>	<input type="checkbox"/>	<input type="checkbox"/>
12X	16X	20X	24X	28X	32X

The copy filmed here has been reproduced thanks to the generosity of:

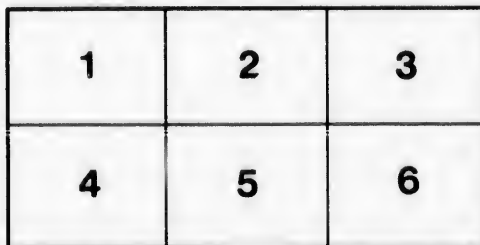
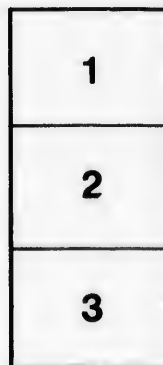
Saint John Regional Library

The images appearing here are the best quality possible considering the condition and legibility of the original copy and in keeping with the filming contract specifications.

Original copies in printed paper covers are filmed beginning with the front cover and ending on the last page with a printed or illustrated impression, or the back cover when appropriate. All other original copies are filmed beginning on the first page with a printed or illustrated impression, and ending on the last page with a printed or illustrated impression.

The last recorded frame on each microfiche shall contain the symbol  $\rightarrow$  (meaning "CONTINUED"), or the symbol  $\nabla$  (meaning "END"), whichever applies.

Maps, plates, charts, etc., may be filmed at different reduction ratios. Those too large to be entirely included in one exposure are filmed beginning in the upper left hand corner, left to right and top to bottom, as many frames as required. The following diagrams illustrate the method:



L'exemplaire filmé fut reproduit grâce à la générosité de:

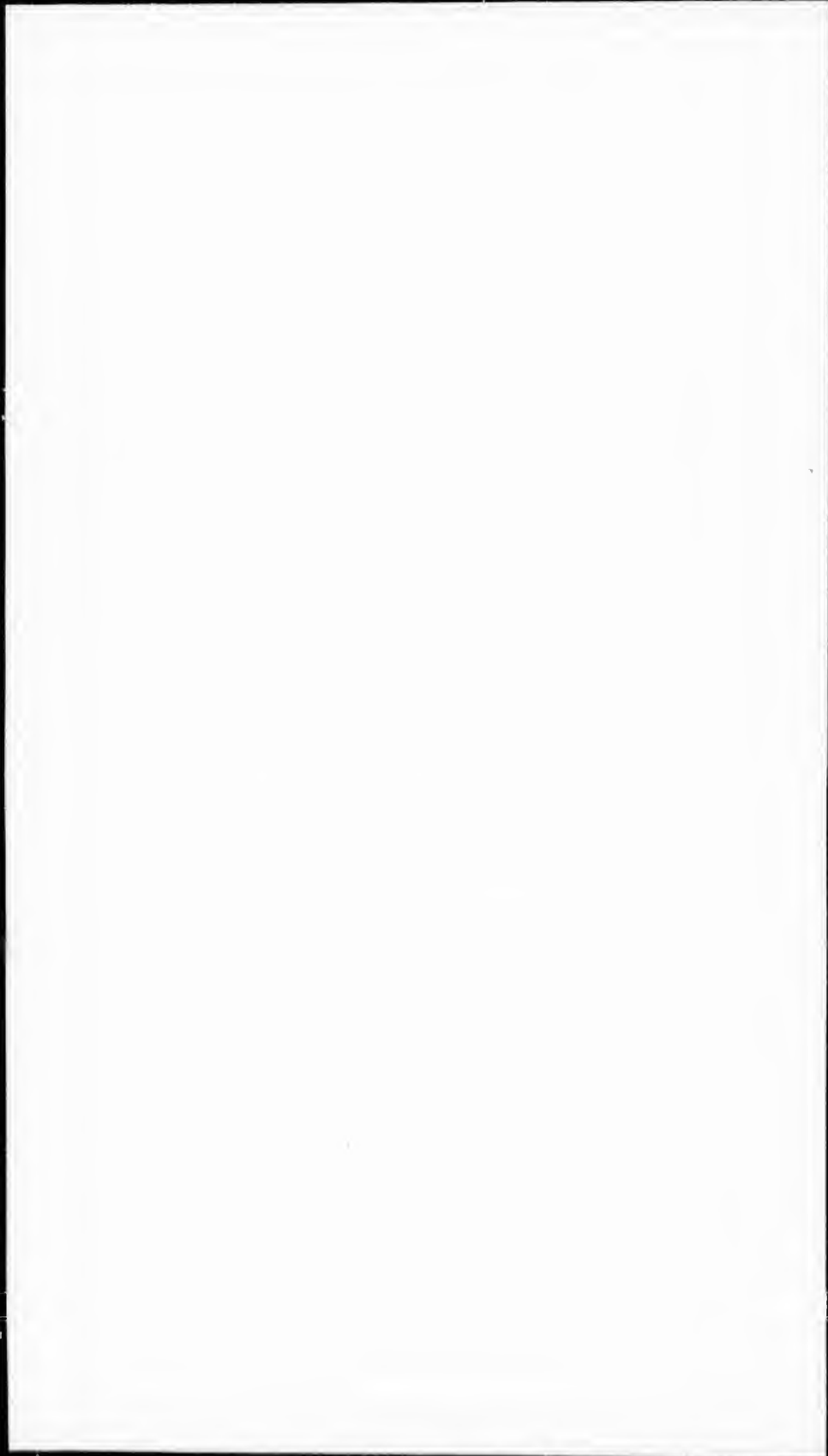
Saint John Regional Library

Les images suivantes ont été reproduites avec le plus grand soin, compte tenu de la condition et de la netteté de l'exemplaire filmé, et en conformité avec les conditions du contrat de filmage.

Les exemplaires originaux dont la couverture en papier est imprimée sont filmés en commençant par le premier plat et en terminant soit par la dernière page qui comporte une empreinte d'impression ou d'illustration, soit par le second plat, selon le cas. Tous les autres exemplaires originaux sont filmés en commençant par la première page qui comporte une empreinte d'impression ou d'illustration et en terminant par la dernière page qui comporte une telle empreinte.

Un des symboles suivants apparaîtra sur la dernière image de chaque microfiche, selon le cas: le symbole  $\rightarrow$  signifie "À SUIVRE", le symbole  $\nabla$  signifie "FIN".

Les cartes, planches, tableaux, etc., peuvent être filmés à des taux de réduction différents. Lorsque le document est trop grand pour être reproduit en un seul cliché, il est filmé à partir de l'angle supérieur gauche, de gauche à droite, et de haut en bas, en prenant le nombre d'images nécessaire. Les diagrammes suivants illustrent la méthode.



708



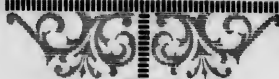
PROPERTY OF  
★ D R JACK ★  
CASE, 2, No. 18.



Art  
Loan Exhibition.



Catalogue.

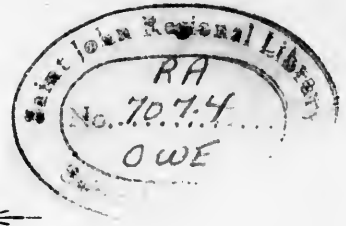


RA  
707.4  
OWE

RA **FOR REFERENCE**  
707.4 Adult  
Owe

**NOT TO BE TAKEN FROM THE ROOM**

n.a. : V



ART

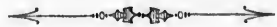
LOAN EXHIBITION.

1884.



Owen Art Gallery,

SAINT JOHN, N. B.



J. & A. McMILLAN, 98 & 100 PRINCE WILLIAM STREET.

1884.



*NOTE.*

*All Pictures which have the prices marked opposite them are for sale; for particulars apply to the Secretary.*

## COMMITTEE OF MANAGEMENT.

---

HIS WORSHIP THE MAYOR, *Chairman.*

JOHN C. MILES, *Secretary.*

---

G. LUDLOW ROBINSON.

THOMAS FURLONG.

J. C. ALLISON.

R. P. STARR.

W. P. DOLE.

R. A. PAYNE.

J. A. ESTEY.

J. E. B. McCREADY.

JOHN V. ELLIS.

D. BERRYMAN, M. D.

J. MORRIS ROBINSON.

C. A. EVERETT.

J. MURRAY KAY.

T. SHERMAN PETERS.

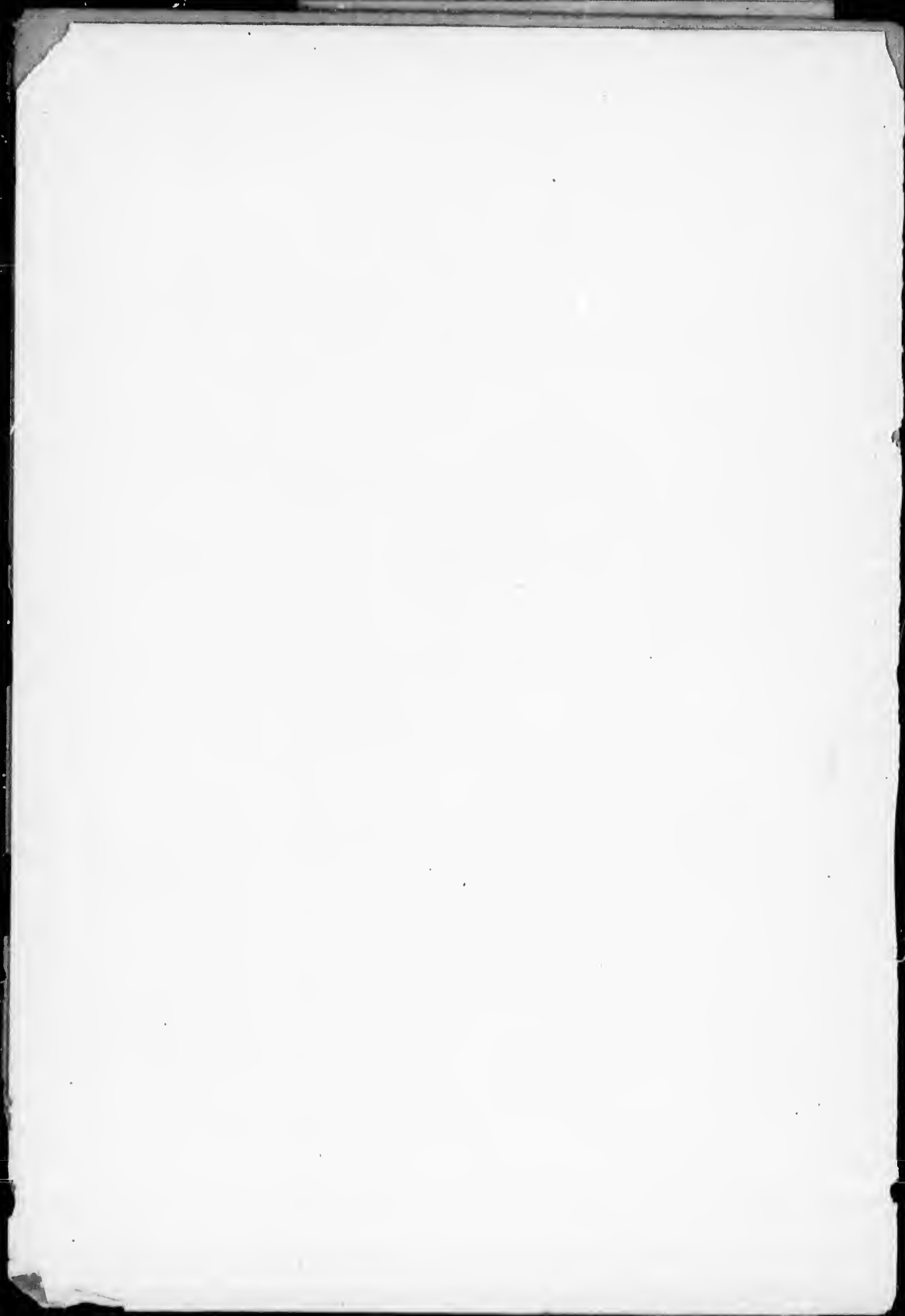
W. H. THORNE.

EDWARD SEARS, JUN.

JOHN McMILLAN.

G. J. CHUBB.

GENERAL D. B. WARNER.



## WATER COLORS.

<i>No.</i>	<i>TITLE.</i>	<i>ARTIST.</i>	<i>Price.</i>
1.	Girls Watching Goats, . . .	F. C. V. Ede, . . . . .	\$
2.	On the Hudson, . . . . .	F. M. Bell Smith, A.R.C.A.,	25
3.	Phlox and Balsams, . . . . .	Jas. Griffiths, R.C.A., . . . . .	15
4.	Master of the Situation, . . .	R. Harris, R.C.A., . . . . .	35
5.	In the Woods, N. Conway,	F. M. Bell Smith, A.R.C.A.,	20
6.	A White Mountain Stream,	" " " "	20
7.	The Ute Trail, Colorado, . . .	W. N. Cresswell, R.C.A., . . .	65
8.	Becalmed off Stag Rocks, . . .	Jas. Smith, R.C.A. . . . .	25
9.	In Southern Italy, . . . . .	A. P. Coleman, . . . . .	20
10.	Stirling, on the River Forth,	G. H. White, R.C.A., . . . . .	25
11.	Pangbourne on the Thames,	" " " "	30
12.	Near St. Catherines, . . . . .	L. R. O'Brien, P.R.C.A., . . .	35
13.	Flowers, . . . . .	Jas. Griffiths, R.C.A., . . . . .	20
14.	In Maremma, . . . . .	C. E. L. Porteous, . . . . .	50
15.	Elms near Toronto, . . . . .	T. M. Martin, R.C.A., . . . . .	55
16.	Mountain Tops, Cærnarvon- shire, . . . . .	G. H. White, R.C.A., . . . . .	25
17.	Windsor Castle, . . . . .	" " " "	25
18.	Near Amstry, Switzerland, . . .	A. P. Coleman, . . . . .	20
19.	Flowers, . . . . .	Jas. Griffiths, R.C.A., . . . . .	15

## WATER COLORS.

<i>No.</i>	<i>TITLE.</i>	<i>ARTIST.</i>	<i>Price.</i>
20.	Cell Faur, N. Wales, . . .	G. H. White, R.C.A., . . .	\$ 25
21.	White Mountains from N. Conway, . . . . .	F. M. Bell Smith, A.R.C.A.,	25
22.	Fish Head Bay, Gd. Manan,	W. N. Cresswell, R.C.A., .	75
23.	Cinderella, . . . . .	C. E. L. Porteous, . . . .	150
24.	The Gardener's Pride, . .	W. Revell, A.R.C.A., . . .	80
25.	Morning after the Wreck, .	L. R. O'Brien, P.R.C.A., .	90
26.	Misty Morning, Toronto Bay,	F. M. Bell Smith, A.R.C.A.,	25
27.	Black Creek, . . . . .	C. E. L. Porteous, . . . .	45
28.	Mounts Adams and Madi- son, from Mt. Washington,	F. M. Bell Smith, A.R.C.A.,	60
29.	Still Life, . . . . .	E. S. Shrapnel, . . . . .	35
30.	In the Thousand Islands, .	A. P. Coleman, . . . . .	20
31.	An Old Pine, . . . . .	G. H. White, R.C.A., . . .	20
32.	Biddeford Bay, . . . . .	L. R. O'Brien, P.R.C.A., .	100
33.	A Village Green, Datchet, near Windsor, . . . . .	" " . . . . .	90
34.	On the Moselle, . . . . .	D. Fowler, R.C.A., . . . .	50
35.	How is the Mighty Fallen,	" " . . . . .	
36.	Mt. Jefferson. White Moun- tains, . . . . .	M. Matthews, R.C.A., . . .	150
37.	On the Coast of N. Devon.	L. R. O'Brien, P.R.C.A., .	90
38.	Tobogganing, . . . . .	F. M. Bell Smith, A.R.C.A.,	35
39.	Birds of a Feather, . . . .	R. Harris, R.C.A., . . . .	65

*WATER COLORS.*

7

<i>No.</i>	<i>TITLE.</i>	<i>ARTIST.</i>	<i>Price.</i>
40.	Spruce Trees, . . . . .	H. Perre, R.C.A., . . . . .	\$ 40
41.	The Coast Guard, N. Devon, . . . . .	L. R. O'Brien, P.R.C.A., . . . . .	200
42.	Morning, Looking towards Gorham, . . . . .	M. Mathews, R.C.A., . . . . .	50
43.	Portrait, . . . . .	C. E. L. Porteous, . . . . .	50
44.	Conway Castle, . . . . .	G. H. White, R.C.A., . . . . .	30
45.	The Thames, at Ousely, . . . . .	L. R. O'Brien, P.R.C.A., . . . . .	75
46.	Regatta, Toronto Bay, . . . . .	F. M. Bell Smith, A.R.C.A., . . . . .	25
47.	Evening, . . . . .	C. E. L. Porteous, . . . . .	50
48.	An Old Man, . . . . .	R. Harris, R.C.A., . . . . .	40
49.	Double Hollyhocks, . . . . .	R. F. Gagen, A.R.C.A., . . . . .	80
50.	Holy Cross, Grand Manan, . . . . .	W. N. Cresswell, R.C.A., . . . . .	50
51.	A Devonshire Woodland Road, . . . . .	L. R. O'Brien, P.R.C.A., . . . . .	50
52.	Bolton Abbey, . . . . .	D. Fowler, R.C.A., . . . . .	50
53.	Early Morning, Biddeford Bay, . . . . .	L. R. O'Brien, P.R.C.A., . . . . .	90
54.	The Glen, at Shelbourne, . . . . .	— Watts, R.C.A., . . . . .	35
55.	Jacques and the Wounded Stag, . . . . .	D. Fowler, R.C.A., . . . . .	35
56.	Fishing House, . . . . .	W. N. Cresswell, R.C.A., . . . . .	50
57.	The Ovens, Mount Desert, . . . . .	R. F. Gagen, A.R.C.A., . . . . .	35
58.	On the Scugog River, . . . . .	C. E. L. Porteous, . . . . .	50
59.	Study of Rocks, . . . . .	F. M. Bell Smith, A.R.C.A., . . . . .	15

## WATER COLORS.

<i>No.</i>	<i>TITLE.</i>	<i>ARTIST.</i>	<i>Price.</i>
60.	Landscape, . . . . .	O. R. Jacobi, R.C.A., . . . . .	\$ 30
61.	White Lilies, . . . . .	W. Revell, A.R.C.A., . . . . .	30
62.	Near Plymouth, . . . . .	L. R. O'Brien, P.R.C.A., . . . . .	50
63.	Elms, . . . . .	T. M. Martin, R.C.A., . . . . .	75
64.	Rocks at Nantasket, . . . . .	F. M. Bell Smith, A.R.C.A., . . . . .	15
65.	Mill on the Mississippi, . . . . .	O. R. Jacobi, R.C.A., . . . . .	30
66.	On the Genessee, . . . . .	" " . . . . .	30
67.	Shepherdess, . . . . .	F. C. V. Ede, . . . . .	20
68.	The Citadel, Quebec, . . . . .	M. Mathews, R.C.A., . . . . .	20
69.	The Dicers, . . . . .	H. Bird, A.R.C.A., . . . . .	75
70.	Wheat Field, Sussex, N. B., . . . . .	C. E. L. Porteous, . . . . .	50
71.	Buffaloes, . . . . .	F. A. Verner, . . . . .	50
72.	Roses, . . . . .	Jas. Griffiths, R.C.A., . . . . .	20
73.	Flowers, . . . . .	" " . . . . .	15



## OIL PAINTINGS.

<i>No.</i>	<i>TITLE.</i>	<i>ARTIST.</i>	<i>Price.</i>
74.	Caller Herrin', . . . . .	Mrs. G. Harvey, . . . . .	125
75.	Gatineau Lake, . . . . .	J. Wilson, . . . . .	35
76.	Indian Encampment, Lower St. Lawrence, . . . . .	Wm. Raphael, R.C.A., . . . . .	
	<i>Diploma Picture loaned by the Dominion Government.</i>		
77.	On the White Mountains, . . . . .	M. Matthews, . . . . .	
78.	Polly, the Housemaid, . . . . .	C. E. Moss, . . . . .	20
79.	Solitude, . . . . .	J. Wilson, . . . . .	20
80.	The Toilet, . . . . .	T. M. Martin, R.C.A., . . . . .	25
81.	The Colour Sergeant hard pressed, . . . . .	R. Harris, R.C.A., . . . . .	200
82.	Shadow River, Muskoğa, . . . . .	J. C. Forbes, R.C.A., . . . . .	50
83.	A Quiet Pool, . . . . .	T. M. Martin, R.C.A., . . . . .	15
84.	Hay Boats on the St. John, . . . . .	F. H. Miles, . . . . .	15
85.	Laurentian Splendour . . . . .	J. A. Fraser, R.C.A., . . . . .	
	<i>Diploma Picture loaned by the Dominion Government.</i>		
86.	Bound to Have Him, . . . . .	T. M. Martin, R.C.A., . . . . .	50
87.	Moonlight, . . . . .	Homer Watson, R.C.A., . . . . .	50
88.	The Return from School, . . . . .	F. M. Bell Smith, A.R.C.A., . . . . .	400
89.	Scarboro' Cliffs, . . . . .	M. Hannaford, A.R.C.A., . . . . .	50
90.	Autumn, . . . . .	H. Perre, R.C.A., . . . . .	30
91.	Twilight, . . . . .	Homer Watson, R.C.A., . . . . .	50



## OIL PAINTINGS.

<i>No.</i>	<i>TITLE.</i>	<i>ARTIST.</i>	<i>Price.</i>
92.	At Beginning of Day, . . .	Homer Watson, R.C.A., . . .	\$ 75
93.	A Brown Study, . . . . .	J. C. Miles, A.R.C.A., . . .	75
	<small>Loaned by W. P. DOLE, Esq.</small>		
94.	Washing, . . . . .	W. L. Judson, . . . . .	25
95.	A Red Cow, . . . . .	W. Reford, . . . . .	20
96.	Rocks, near Nantasket, . .	F. M. Bell Smith, A.R.C.A.,	20
97.	La Salle Trading Post, . .	A. Cox, A.R.C.A., . . . . .	30
98.	Down the Laurentides, . .	Homer Watson, R.C.A., . .	
	<small>Diploma Picture loaned by the Dominion Government.</small>		
99.	Harvest in Brittany, . . .	W. L. Judson, . . . . .	50
100.	Over the Plain, . . . . .	Homer Watson, R.C.A., . .	75
101.	Apple Blossoms, . . . . .	J. W. L. Forster, A.R.C.A.,	400
102.	Weary, Friendless and Forsaken, . . . . .	Mrs. Schreiber, R.C.A., . .	75
103.	The Smithy, . . . . .	Wm. Brymner, A.R.C.A., . .	25
104.	A Glass Too Much, . . . .	R. Harris, R.C.A., . . . . .	65
105.	Clearing Up, . . . . .	Homer Watson, R.C.A., . .	25
106.	Somebody's Grandfather,	R. Harris, R.C.A., . . . . .	75
107.	The Gossips, . . . . .	J. W. L. Forster, . . . . .	200
108.	The Return from the Hunt,	H. Perre, R.C.A., . . . . .	100
109.	A Cuff on the Ear, . . . .	Mrs. Schreiber, R.C.A., . .	75
110.	Misty Morning, . . . . .	T. M. Martin, R.C.A., . . .	25
111.	Art Students, . . . . .	F. M. Bell Smith, A.R.C.A.,	100

OIL PAINTINGS.

11

<i>No.</i>	<i>TITLE.</i>	<i>ARTIST</i>	<i>Price.</i>
112.	Sunset in the Fields, . . .	Homer Watson, R.C.A.,	\$ 25
113.	An Ecclesiastic, . . . . .	R. Harris, R.C.A., . . . . .	150
114.	A Mountain Lake, . . . . .	Homer Watson, R.C.A., . . . . .	75
115.	Fog on the Rocks, . . . . .	F. M. Bell Smith, A.R.C.A., Loaned by L. R. O'BRIEN, Esq., R. C. A., President of the Royal Canadian Academy.	
116.	The Young Pioneer, . . . . .	O. R. Jacobi, R.C.A., . . . . .	100
117.	Partridge Island, from the New Pier, . . . . .	J. C. Miles, A.R.C.A., . . . . .	50
118.	"Beware!" . . . . .	J. C. Forbes, R.C.A., . . . . . Diploma Picture loaned by the Dominion Government.	
119.	Hazy Afternoon, . . . . .	H. Perre, R.C.A., . . . . .	25
120.	A Woodland Stream, . . . . .	F. M. Bell Smith, A.R.C.A., . . . . .	25
121.	At the Church Door, . . . . .	W. Brymner, A.R.C.A., . . . . .	75
122.	Beside the Still Waters, . . . . .	T. M. Martin, R.C.A., . . . . .	35
123.	Metapedia, . . . . .	H. Perre, R.C.A., . . . . .	25
124.	Woodland Road, . . . . .	Homer Watson, R.C.A., . . . . .	75
125.	In the Alleghany Moun- tains, . . . . .	H. Perre, R.C.A., . . . . .	40
126.	Bay of Fundy Cliffs, . . . . .	J. C. Miles, A.R.C.A., . . . . . Owned by G. L. ROBINSON, Esq.	250
127.	Fishing Village, Lake Su- perior, . . . . .	J. C. Forbes, R.C.A., . . . . .	50
128.	Path by the Brook, . . . . .	F. M. Bell Smith, A.R.C.A., . . . . .	25
129.	Preparing to Spin, . . . . .	W. Brymner, A.R.C.A., . . . . .	75
130.	Beach at St. Malo, . . . . .	W. L. Judson, . . . . .	50

## OIL PAINTINGS.

<i>No.</i>	<i>TITLE.</i>	<i>ARTIST.</i>	<i>Price.</i>
131.	In Colorado, . . . . .	H. Perre, R.C.A., . . . . .	\$ 25
132.	Trout Stream in the Forest, Allan Edson, R.C.A., . . . . . Diploma Picture loaned by the Dominion Government.		
133.	In Lower Canada, . . . . .	H. Perre, R.C.A., . . . . .	25
134.	Foggy Morning off the Boar's Head, . . . . .	F. H. Miles, . . . . .	20
	Sold to JAMES SMITH, R. C. A.		
135.	The Croppy Boy, . . . . .	Mrs. Schreiber, R.C.A., . . . . .	
	Diploma Picture loaned by the Dominion Government.		
	<p>"The youth has knelt to tell his sins, 'Nomine Dei,' the youth begins, 'At the Siege of Ross did my father fall, And at Gorey my loving brothers all, I, alone, am left of my name and race, I will go to Wexford to take their place.</p> <p>'Now, Father, bless me before I go— To die, if God has ordained it so,' The Priest said naught, but a rustling noise Made the youth look up in wild surprise: The robes were off, and in scarlet there Sat a yeoman captain with fiery glare; With fiery glare and with fury hoarse, Instead of blessing he breathed a curse, 'Twas a good thought, boy, to come here and shrive, For one short hour is your time to live.'"</p> <p style="text-align: center;"><i>Ballad of the time of the Irish Rebellion.</i></p>		
136.	A Summer Day, . . . . .	F. C. V. Ede, . . . . .	30
137.	Misty Morning, Georgian Bay, . . . . .	T. M. Martin, R.C.A., . . . . .	40
138.	"And son from sire through passing generations learns the fate of all," . . . . .	R. Harris, R.C.A., . . . . .	150
139.	Megantic Range, from Spi- der Lake, . . . . .	M. Hannaford, A.R.C.A., . . . . .	30
140.	River Road, . . . . .	F. H. Miles, . . . . .	20
	Sold to F. M. BELL SMITH, A. R. C. A.		

OIL PAINTINGS.

13

<i>No.</i>	<i>TITLE.</i>	<i>ARTIST.</i>	<i>Price.</i>
141.	Finishing Touches, . . .	R. Harris, R.C.A., . . .	\$ 30
142.	A Domestic Breeze, . . .	Susan M. Peters, . . .	75
143.	Homeless, . . . . .	Mrs. Geo. Harvey, . . .	125
144.	Muskoka River, . . . . .	T. M. Martin, R.C.A., . . .	40
145.	Falls at Water Down, . . .	"            "	. . . 20
146.	A Village Store, . . . . .	Wm. Brymner, A.R.C.A., . .	50
147.	Going to the Meet, . . .	H. Bird, A.R.C.A., . . . . .	80
148.	Staff of Life, . . . . .	T. M. Martin, R.C.A., . . .	35
149.	Massa Home, . . . . .	"            "	. . . 15
150.	A Barn Yard, . . . . .	"            "	. . . 100
151.	Indian River, Owen Sound,	R. Baigint, A.R.C.A., . . .	100
152.	Rocky Mountain Canon, .	J. C. Forbes, R.C.A., . . . .	500
153.	Morning on the Prairie, .	T. M. Martin, R.C.A., . . .	125
154.	Potowanda Falls, . . . . .	R. Baigint, A.R.C.A., . . .	120
155.	One of Many, . . . . .	P. G. Wixon, . . . . .	100
156.	Earth's Tribute, . . . . .	Wm. Revell, A.R.C.A., . . .	100
157.	Early Morning, . . . . .	G. Harvey, A.R.C.A., . . . .	300
158.	Off Belle Isle, . . . . .	J. C. Forbes, R.C.A., . . . .	145
159.	Mount of the Holy Cross,	"            "	. . . 450

## DESIGNS.

---

160. Design for the North  
Transept Window of the  
R. C. Church, Sarnia, . . R. McCausland.
161. Design for a Stair Case  
Window, . . . . . “
- 

## ETCHINGS.

<i>No.</i>	<i>TITLE.</i>	<i>ARTIST.</i>	<i>Price.</i>
162.	Bridge near Ancaster, . .	T. M. Martin, R.C.A.,	. . 2.50
163.	Elms, . . . . .	“ “	. . 2.50
164.	Muskoka River, . . . . .	“ “	. . 2.50

## PICTURES LOANED BY RESIDENTS.

<i>No.</i>	<i>TITLE.</i>	<i>ARTIST.</i>	<i>OWNER.</i>
162.	Aubry Cathedral, . . . . .	Copy by Brown, .	R. P. Starr.
163.	Salmon, . . . . .	W. M. Brackett, .	Miss Nicholson.
164.	Sunset off the Coast of France, . . . . .	Miss Holly, . . .	Hon. J. Holly.
165.	Marine, . . . . .	W. F. Lansil, . .	G. L. Robinson.
166.	Highland Cabin, . . . . .	Miss Grant, . . .	Artist.
167.	Moonrise off the Coast of France, . . . . .	Miss Holly, . . .	Hon. J. Holly.
168.	Waterfall, . . . . .	Eni King, . . . .	G. L. Robinson.
169.	The Camp, . . . . .	Charles Ward, Saint George, N. B.	T. Furlong.
170.	Pears, . . . . .	J. C. Miles, . . .	G. L. Robinson.
171.	Pears, . . . . .	J. C. Miles, . . .	Mr. Murphy.
172.	Don't be Afraid, Dolly, Paris Medal, 1882.	E. Munier, (Pupil of Bougeureau).	T. Furlong.
173.	Spirit of the Times, . . . . .	J. C. Miles, . . .	S. L. T. Frost.
174.	To the Front, . . . . .	Beauquesne, Paris, (Pupil of De Neuville).	T. Furlong.
175.	Landscape, . . . . .	Fox, . . . . .	Miss Burton.
176.	A Good Story, . . . . .	Hombourg, Munich,	T. Furlong.
177.	Belwene Nizen and Rush- phan Bullany, . . . . .	{ Baron H. DeLyoncort, }	Parks.

16      *PICTURES LOANED BY RESIDENTS.*

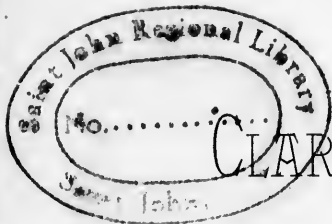
<i>No.</i>	<i>TITLE.</i>	<i>ARTIST.</i>	<i>OWNER.</i>
178.	View of St. John Harbor,	J. C. Miles,	J. M. Grant.
179.	The Song of the Mocking Bird, . . . . .	A. Bertsik, Munich, (Pupil of Nitzky).	T. Furlong.
180.	Landscape, . . . . .	Fox, . . . . .	Miss Burton.
181.	The Girl I left behind Me, Corcos. . . . .		T. Furlong.
	"So loath we part from all we love, From all the links that bind us; So turn our hearts, as on we rove, To those we've left behind us."		
182.	Portrait, . . . . .	Holman, . . . . .	Mr. Johnston.
183.	Kathleen and Saint Kevin, James Holman, Saint John, N. B.		T. Furlong.
	"On the bold cliff's bosom cast, Tranquil now he sleeps at last, Dreams of heav'n, nor thinks that e'er Woman's smile can haunt him there; But, nor earth nor heaven is free From her power, if fond she be; Even now, while calm he sleeps, Kathleen o'er him leans and weeps." ( <i>Moore's Melodies</i> ).		
184.	Portrait, . . . . .		Count De Bury.
185.	Oyster, . . . . .	J. C. Miles, . . . . .	G. L. Robinson.
186.	Landscape, . . . . .	" . . . . .	R. P. Starr.
187.	Timber Clearing, . . . . .	C. Ward, . . . . .	" "
188.	After-Glow, . . . . .	J. C. Miles, . . . . .	Mrs. Peters.
190.	Water Fall, Cow Bay, N. S. . . . .	W. C. Cunard, . . . . .	T. H. Peters.
191.	Portrait . . . . .	Holman, . . . . .	Mr. Parks. .
192.	Teddington Lock, on the Thames, . . . . .	T. J. Soper, . . . . .	Count De Bury.

PICTURES LOANED BY RESIDENTS. • 17

<i>No.</i>	<i>TITLE.</i>	<i>ARTIST.</i>	<i>OWNER.</i>
193.	Autumnal Evening, . . .	G. Williams, . . .	W. P. Dole.
194.	Horse Fair, . . . . .	Donitze, . . . . .	G. L. Robinson.
195.	Landscape, . . . . .	Vickers, . . . . .	W. P. Dole.
196.	Landscape, . . . . .	W. Parker, . . . . .	McAvity.
197.	Lake George, . . . . .	Sanman, . . . . .	Miss Nicholson.
198.	Prize Drawing, from Cast,	Miss L. M. Grant, Artist.	
199.	Eaves-Droppers, . . . . .	E. W. Cook, . . . . .	R. P. Starr.
200.	On the Coast of Kent, . . . . .	Miss L. M. Grant, Artist.	
201.	Point Pleasant, Halifax, N. S., . . . . .	Mrs. J. M. Grant, " "	
202.	On the La Have, N. S., . . . . .	" " "	
203.	Salmon Pool, . . . . .	Hammond, . . . . .	R. P. Starr.
204.	Wharf in Carleton, . . . . .	" " "	
205.	On the St. John River, . . . . .	John Gray, . . . . .	" "
206.	" " " " . . . . .	" " "	" "
207.	On the English Coast, . . . . .	Fox, . . . . .	Miss Burton.
208.	" " " " . . . . .	J. C. Miles, . . . . .	L. Millidge.







RA  
707.4  
Cwe

433

# CLARKE, KERR & THORNE,

60 PRINCE WILLIAM STREET,

DEALERS IN

HARDWARE, CUTLERY AND FANCY GOODS.

French, English, German & American Fancy Goods in Variety.

FOR SALE AT LOWEST PRICES.

ESTABLISHED 1824.

# C. & E. EVERETT, Hatters and Furriers.

WHOLESALE & RETAIL.

11 King Street, Saint John, N. B.

ESTABLISHED 1822.

# J. & A. McMILLAN,

PUBLISHERS, BOOKSELLERS, STATIONERS, PRINTERS,  
BOOK-BINDERS, ETC.

*beg to notify Artists and the public that they keep a full supply of all kinds  
of Oil and Water Colors, Canvass, Brushes, Drawing Papers, Pencils, and the  
many requisites for Painting, Drawing, Sketching, &c.*

ART, AS DISPLAYED IN MANUFACTURES, IS WORTHILY EXEMPLIFIED  
IN THE SUPERB STOCK OF

ENGLISH, FRENCH, ITALIAN, GERMAN AND CHINESE  
GROCERY GOODS,

**GEO. ROBERTSON'S GROCERY**

AND ITALIAN WAREHOUSE,

67 PRINCE WILLIAM STREET.

LANCASHIRE  
FIRE INSURANCE COMPANY.  
CAPITAL, TEN MILLION DOLLARS.

SCOTTISH UNION AND NATIONAL  
FIRE INSURANCE COMPANY.  
CAPITAL, THIRTY MILLION DOLLARS.

CONFEDERATION LIFE ASSOCIATION.  
CAPITAL, ONE MILLION DOLLARS.

J. MACGREGOR GRANT,  
General Agent and Broker,  
NO. 52 PRINCESS STREET, SAINT JOHN, N. B.



THOMAS FURLONG

DIRECT IMPORTER OF

Wines, Brandies, &c.

CORNER OF  
PRINCESS AND WATER STREETS.

Saint John, N. B.



