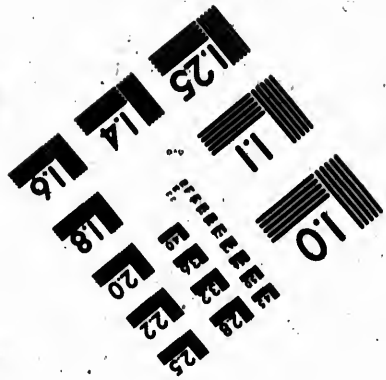
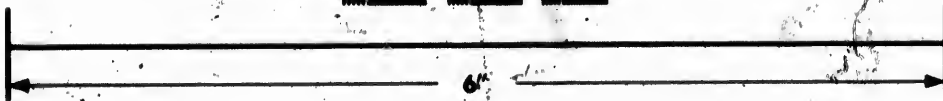
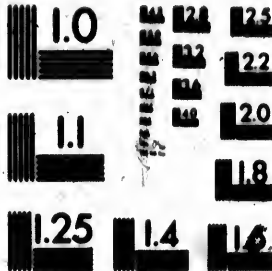


**IMAGE EVALUATION  
TEST TARGET (MT-3)**



**Photographic  
Sciences  
Corporation**

23 WEST MAIN STREET  
WEBSTER, N.Y. 14590  
(716) 872-4503

SEE 121  
SEE 122  
120  
121

**CIHM  
Microfiche  
Series  
(Monographs)**

**ICMH  
Collection de  
microfiches  
(monographies)**



**Canadian Institute for Historical Microreproductions / Institut canadien de microreproductions historiques**

11  
01  
12

**© 1993**



The copy filmed here has been reproduced thanks to the generosity of:

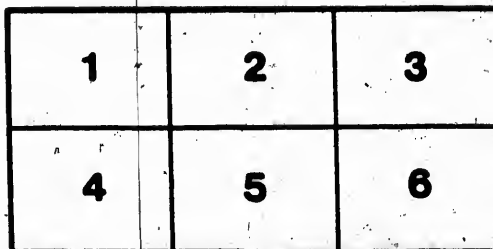
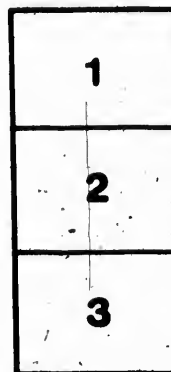
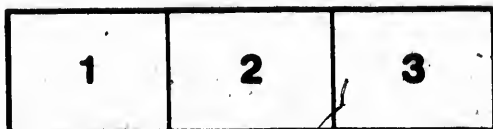
University of Toronto,  
Science & Medicine Library

The images appearing here are the best quality possible considering the condition and legibility of the original copy and in keeping with the filming contract specifications.

Original copies in printed paper covers are filmed beginning with the front cover and ending on the last page with a printed or illustrated impression, or the back cover when appropriate. All other original copies are filmed beginning on the first page with a printed or illustrated impression, and ending on the last page with a printed or illustrated impression.

The last recorded frame on each microfiche shall contain the symbol  $\rightarrow$  (meaning "CONTINUED"), or the symbol  $\nabla$  (meaning "END"), whichever applies.

Maps, plates, charts, etc., may be filmed at different reduction ratios. Those too large to be entirely included in one exposure are filmed beginning in the upper left hand corner, left to right and top to bottom, as many frames as required. The following diagrams illustrate the method:



L'exemplaire filmé fut reproduit grâce à la générosité de:

University of Toronto,  
Science & Medicine Library

Les images suivantes ont été reproduites avec le plus grand soin, compte tenu de la condition et de la netteté de l'exemplaire filmé, et en conformité avec les conditions du contrat de filmage.

Les exemplaires originaux dont la couverture en papier est imprimée sont filmés en commençant par le premier plat et en terminant soit par la dernière page qui comporte une empreinte d'impression ou d'illustration, soit par le second plat, selon le cas. Tous les autres exemplaires originaux sont filmés en commençant par la première page qui comporte une empreinte d'impression ou d'illustration et en terminant par la dernière page qui comporte une telle empreinte.

Un des symboles suivants apparaîtra sur la dernière image de chaque microfiche, selon le cas: le symbole  $\rightarrow$  signifie "A SUIVRE", le symbole  $\nabla$  signifie "FIN".

Les cartes, planches, tableaux, etc., peuvent être filmés à des taux de réduction différents. Lorsque le document est trop grand pour être reproduit en un seul cliché, il est filmé à partir de l'angle supérieur gauche, de gauche à droite, et de haut en bas, en prenant le nombre d'images nécessaire. Les diagrammes suivants illustrent la méthode.

UNIVERSITY OF TORONTO



3 1761 00841325

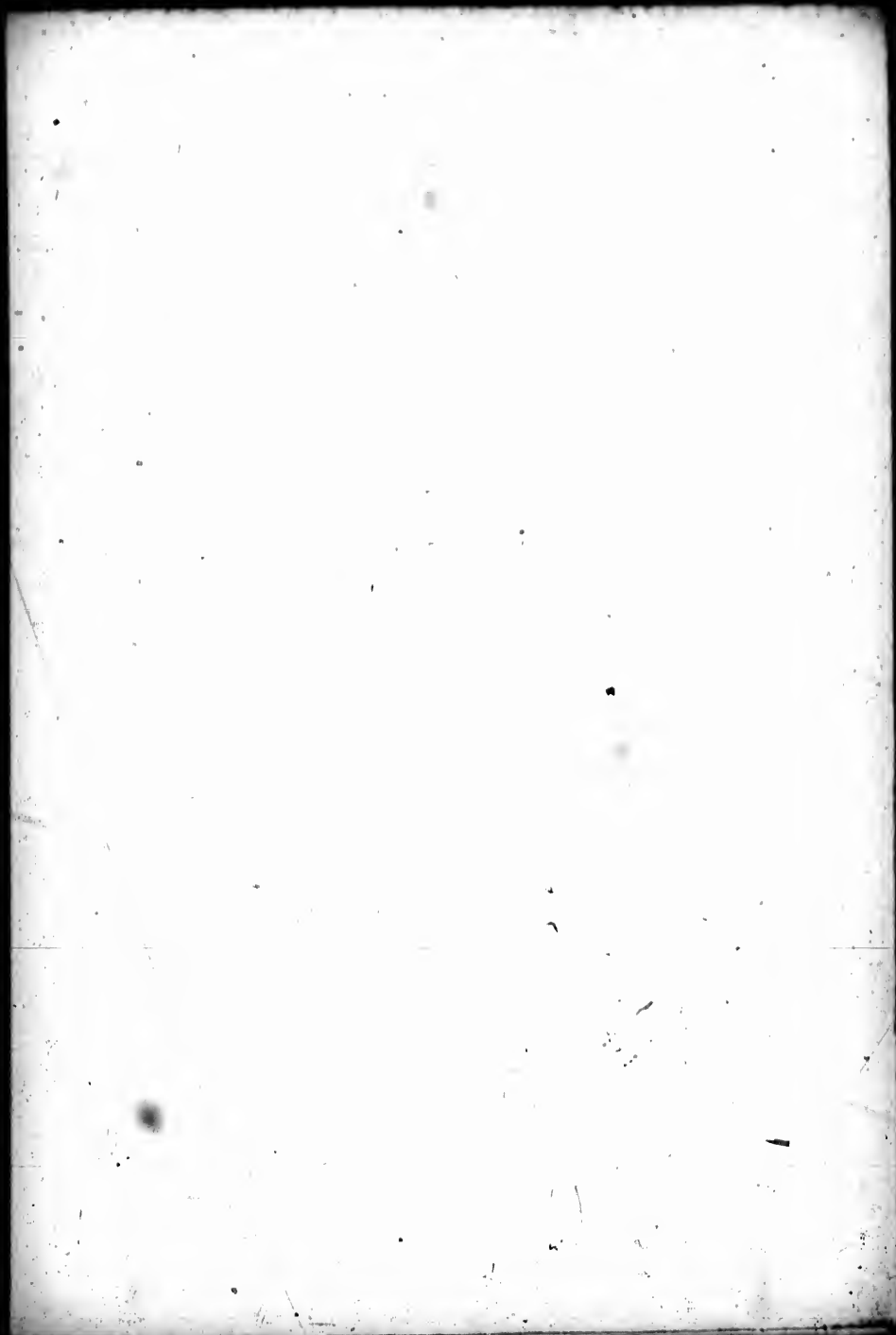
Ross, Alexander Milton

Ferns and wild flowers



Presented to  
**The Library**  
of the  
**University of Toronto**  
by

*Dr. Barber*







Bot  
Flora  
R

CANADIAN

FERNS AND WILD FLOWERS,

COLLECTED IN THE PROVINCE OF  
ONTARIO, CANADA.

Alexander  
Milton  
A. M. ROSS, M.D.

AUTHOR OF "THE BEES OF CANADA," "THE BUTTERFLIES AND MOTHS  
OF CANADA," ETC.

NEW YORK  
BOTANICAL  
GARDEN

---

TORONTO.

1873.



## FERNS.

*Osmunda regalis.*  
**ROYAL FERN.**

This beautiful Fern grows in deep, swampy woods.

*O. Claytoniana.*  
**CLAYTON'S FLOWERING FERN.**

Grows in dark, moist woods, and on deeply shaded hillsides.

*O. cinnamomea.*  
**CINNAMON FERN.**

Grows in swamps, and marshy woods.

*Polypodium vulgare.*  
**COMMON POLYPODY FERN.**

Grows on mossy banks.

*P. dryopteris.*  
**THREE BRANCHED POLYPODY FERN.**

Grows in rocky, shaded woods.

*P. phegopteris.*  
**WOODLAND POLYPODY FERN.**  
Grows on wet, shaded hillsides, in woods.

JAN 19 1926 Bonhart-Hb

4  
VERNS.

*P. hexagonoptera.*

WINGED POLYPODY FERN.

Grows in open woods.

*Pteris aquilina.*

COMMON BRACKEN FERN.

Grows in open woods, and fields. Very common.

*Polystichum acrostichoides.*

TERMINAL SHIELD FERN.

Grows on the banks of streams, in the woods.

*P. aculeatum.*

PRICKLY SHIELD FERN.

Grows in hilly, rocky woods.

*Polystichum lonchitis.*

HOLLY LEAVED SHIELD FERN.

Grows in rocky mountainous woods, in shaded localities.

*P. fragrans*

SWEET SCENTED SHIELD FERN.

Grows in the fissures of mossy shaded rocks.

*Dicksonia punctilobula.*

GOSSAMER FERN.

Grows in open woods.

*Lastrea spinulosa.*

COMMON WOOD FERN.

Grows in damp, boggy woods.

*L. thelypteris.*

SWAMP SHIELD FERN.

Grows in marshy places.

*L. cristata.*

CRESTED SHIELD FERN.

Grows in dark swamps.

*L. marginalis.*

MARGINAL FRUITING SHIELD FERN.

Grows on rocky hillsides.

*L. noveboracensis.*

NEW YORK SHIELD FERN.

Grows in high places in woods.

*L. goldiana.*

GOLDIE'S SHIELD FERN.

Grows in rich, moist woods.

*Quoelca sensibilis.*

SENSITIVE FERN.

Grows in shaded, damp places.



*Ophioglossum vulgatum.*

**ADDER'S TONGUE FERN.**

Grows in deeply shaded and damp woods.

*Struthiopteris pennsylvanica.*

**OSTRICH FERN.**

Grows in rich, loamy, shaded ground.

*Scolopendrium vulgare.*

**HART'S-TONGUE FERN.**

Grows in the crevices of shaded rocks.

*Woodwardia virginicum.*

**COMMON CHAIN FERN.**

Grows in boggy ground.

*Woodsia ilvensis.*

**COMMON DOWNY HAIR FERN.**

Grows on rocks in open woods and fields.

*Cystopteris bulbifera.*

**COMMON BLADDER FERN.**

Grows in the fissures of moist rocky banks.

*C. fragilis.*

**SLENDER BLADDER FERN.**

Grows on well-shaded rocky hill sides,

*Camptosorus rhizophyllus.*

**WALKING FERN.**

Grows in dark, damp, woods, on well-shaded mossy banks.

*Adiantum pedatum.*

**BIRD'S-FOOTED MAIDEN-HAIR FERN.**

Grows on moist loamy banks and hillsides.

*Asplenium trichomanes.*

**COMMON SPLEENWORT.**

Grows amongst damp rocks.

*Asplenium viride.*

**GREEN SPLEENWORT.**

Found in crevices of moist rocks.

*A. thelypteroides.*

**SILVERY SPLEENWORT.**

Grows in dark, shaded woods.

*A. ebeneum.*

**BLACK STALKED SPLEENWORT.**

Grows in open woods.

*A. filix-jamina.*

**LADY FERN.**

Grows in moist, dark woods.



*A. angustifolium.*

**NARROW-FRONDED SPLEENWORT.**

Grows in thick, rocky woods.

*Allosorus atropurpureus.*

**PURPLE-STEMMED ROCK BRAKE.**

Grows in dark, shaded banks.

*A. gracilis.*

**SLENDER ROCK BRAKE.**

Grows in the crevices of rocks, in dark places.

*Botrychium virginicum.*

**RATTLE SNAKE FERN.**

Grows in wet, boggy woods.

*B. lunaria.*

**COMMON MOONWORT.**

Grows in open woods.

*B. lunarioides.*

**TALL MOONWORT.**

Grows in open, dry woods.

*B. simplex.*

**DWARF MOONWORT.**

Grows in dark, damp woods.

## WILD FLOWERS.

---

*Hepatica acutiloba.*

WIND FLOWER.

*Trillium erectum.*

PURPLE TRILLIUM.

*Trillium grandiflora.*

DEATH FLOWER.

*Aquilegia canadensis.*

ROCK COLUMBINE.

*Dicentra canadensis.*

SQUIRREL CORN.

*Geranium maculatum.*

WOOD GERANIUM.

*Trientalis.*

CHICKWEED WINTERGREEN.

*Claytonia virginica.*

SPRING BEAUTY.

*Anemone nemerosa.*

WOOD ANEMONE.

## WILD FLOWERS.

*Iris versicolor.*

## LARGE BLUE FLAG.

*Uicularia grandiflora.*

## WOOD DAFFODILL.

*Pyrola elliptica.*

## SWEET WINTERGREEN.

*Monarda uniflora.*

## ONE FLOWERED PYROLA.

*Rudbeckia fulgida.*

## CONE FLOWER.

*Castilleja coccinea.*

## SCARLET CUP.

*Orchis spectabilis.*

## SHOWY ORCHIS.

*Arum triphyllum.*

## INDIAN TURNIP.

*Rubus odoratus.*

## FLOWERING RASPBERRY.

*Veronica americana.*

## SPEEDWELL.

WILD FLOWERS

11

*Erythronium americanum.*

ADDER'S TONGUE.

*Cypripedium pubescens.*

YELLOW LADY'S SLIPPER.

*Cypripedium spectabile.*

SHOWY LADY'S SLIPPER.

*Vaccinium oxycoccus.*

SMALL CRANBERRY.

*Lilium philadelphicum.*

WILD ORANGE LILY.

*Penstemon pubescens.*

BEARD TONGUE.

*Rosa blanda.*

EARLY WILD ROSE.

*Rosa canadensis.*

CANADA ROSE.

*Rosa blanda.*

SMALL WILD WHITE ROSE.

*Nympha odorata.*

SWEET SCENTED WATER LILY.

WIND FLOWERS.

*Sarracenia purpurea.*

PITCHER PLANT.

*Nuphar advena.*

YELLOW POND LILLY.

*Campanula rotundifolia.*

CANADA HAREBELL.

---

NOW IN PRESS.

**THE FLORA OF CANADA :**

WITH

FULL DESCRIPTIONS OF EACH SPECIES FOUND  
IN THE DIFFERENT PROVINCES OF  
THE DOMINION.

BY

**A. M. ROSS, M. D.,**

AUTHOR OF THE "BIRDS OF CANADA," "BUTTERFLIES AND MOTHS OF  
CANADA," AND THE "FLORA OF CANADA," &c., &c.

With 100 Lithograph Illustrations of the principal varieties.

Crown 8vo., Cloth, fine toned paper, extra gilt side,  
pp. 300. Price \$2.00.

