

4



n.d.

# Peterborough

**.Rice Lake.  
Stony Lake**



IN THE PARK AT PETERBOROUGH

**.. THE CALCUTT LINES ..  
PETERBOROUGH**

# W. A. SANDERSON



SOUVENIR NOVELTIES, DIAMONDS  
WATCHES, ETC., HIGH  
CLASS REPAIRING

367 GEORGE ST., PETERBORO



## CHOCOLATES

For the people who want the best.  
Original sealed packages.  
Quality and weight guaranteed.  
Sold everywhere.

The Harry Webb Co., Limited  
TORONTO

By appointment purveyors to His Excellency  
the Governor-General



We cater to the campers'  
and tourists' require-  
ments. No order too large and  
none too small to receive our  
personal attention . . . . .

**E. F. MASON & CO.**  
**Groceries, Provisions and Fruit**

Stores—353 George St.  
429 George St. 431 George St.

Warehouses  
28-30 Chambers St.

Peterboro



## PETERBOROUGH



This city is an important railway point and industrial centre, with a population of nearly 11,000 people. It is situated on the Otonabee river at a point where it has a fall of about 150 feet, which affords unlimited motive power for the many mills and manufactories that are located here. The country of which this is the focus, is replete with scenic beauties, many pretty lakes and rivers being



Running the Rapids of the Eel River.

in the immediate vicinity, and offering much to attract the tourist, pleasure-seeker and sportsman. To sportsmen, the town is famous as the headquarters for the "Rice Lake" or "Peterborough" canoe. Peterborough is within a little over two hours' run from Toronto, and is reached by either the Grand Trunk Railway System or the Canadian Pacific Railway. Within a few miles of Peterborough, is Rice Lake, a charming spot for tourists and a locality that is in the sportsman's category. It is situated about ten miles southeast of the city, and is noted for its maskinongé and bass fishing. Rice Lake is reached by the steamers of the Calcutt



The Main Street, Peterborough.

Lines, of which Mr. H. Calcutt is the moving spirit. These steamers are well built and comfortable. Within a little less than ten miles of Peterborough, is situated Lakefield, the starting point for the trip through the Kawartha lakes, one of the most beautiful sections of the "Highlands of Ontario." This district comprises a chain of lakes, with a navigable route of 75 miles through a country with unexcelled scenery and full of interest to the tourist. Stony Lake is probably the most beautiful of the chain, and is covered with islands

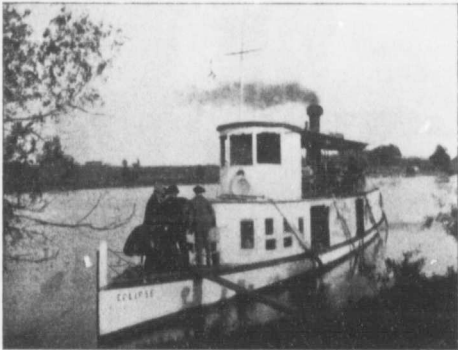


One of the Busiest Corners in Peterborough.

of all sizes, from one of a few feet to those of more pretentious dimensions.

The fishing in the Kawartha lakes district is good, and the angler can at any time enjoy himself to his heart's content, with record catches of bass and maskinongé, at nearly all points in the locality. The boat service is all that is to be desired, and the tourist is at no time away from telegraphic communication with the business world.

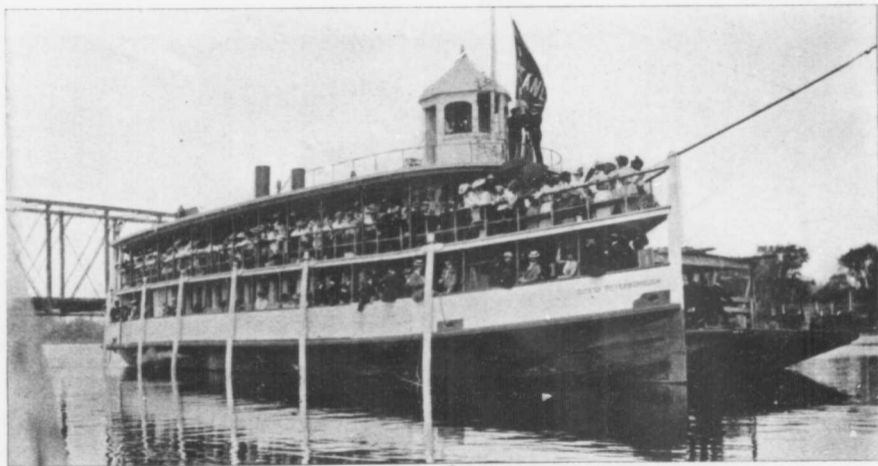
Six miles from Peterborough, is Chemong Park, a delightful resort on Lake Chemong, with a hotel that caters to the wants of a fastidious class. There are also a series of cottages at this resort that



Otonabee River at Pine Grove.

can be rented for the summer at reasonable rates. There are several places on the entire chain of the Kawartha lakes that are excellent spots for the tired denizen of city life to wile away his summer vacation with profit to the physical as well as mental propensities of his existence.

The city of Peterborough itself is, however, the objective point for the tourist and sportsman who makes his way in the direction of this part of the "Highlands of Ontario," and a few words in reference to the city itself will not be out of place. The city is built on a solid basis, the business portion especially appealing to the *connoisseur* of architectural knowledge and in keeping with the residential portion of the town, and possesses many features



The New Steamer "City of Peterborough" of the Calcutt Lines.

that compare favorably with the larger cities of Canada. The streets are well laid out, particularly the residential section, where in this portion of the town a superabundance of trees are noticeable,



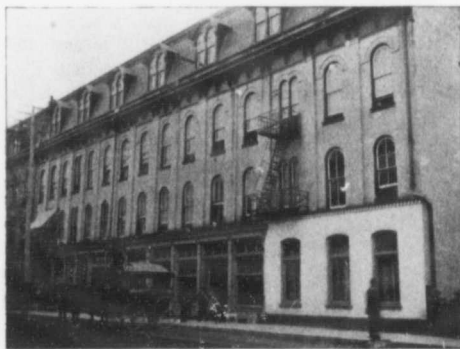
One of the types of Canoes built by the Peterborough Canoe Company.

and the many fine residences, with their well-kept lawns, give impression of a prosperous and enterprising community. The city boasts of no less than six public parks, beautifully wooded and kept in excellent condition. The drinking water is pure, and a modern system of water-works is in operation.

One of the great attractions of the town, is the famous lift-lock, one of the series of the Trent Valley Canal, of which an illustration is shown in another portion of this publication. This lock is a stupendous work, and well worthy of an inspection by the tourist.

For a city of the size of Peterborough, the hotel accommodation compares favorably with many cities of a much more pretentious nature, and the traveller is assured of comfort and polite attention.

The Oriental Hotel is recommended, and is



The Oriental Hotel, Peterborough.

thoroughly equipped with modern accessories that are expected in a first-class hostelry. It has accommodation for one hundred guests. The table is all that may be desired, and the service is excellent.

The National Hotel, another of the good resorts at which one may stay, has been improved and renovated, and will be found a most desirable place for families wishing a quiet and comfortable place for their sojourn.

Peterborough also boasts of the best manufactories of canoes, and it is a well-known fact that the best canoes built in the world emanate from this city. The Peterborough Canoe Company is



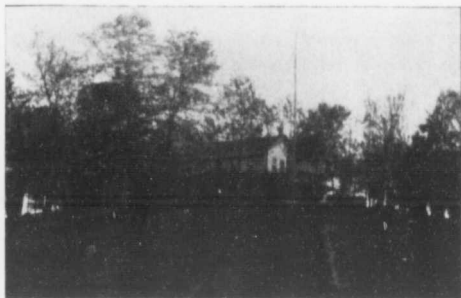
Portage on Eel River.

located here, and their output is the largest and their work is the most thought of in America.

A very pleasant trip from Peterborough, is down the Otonabee river to Rice Lake, through a most interesting part of the country. Jubilee Point, twenty miles away, is a good stopping-off point, where a desirable hotel is located, and at which place golf, tennis and other games can be indulged in as desired.

The bass fishing in the Otonabee is unexcelled, and the lover of the rod is assured of a good catch at any time, and during the open season duck hunting is good owing to the splendid feeding-grounds that are in this vicinity. In the woods, in



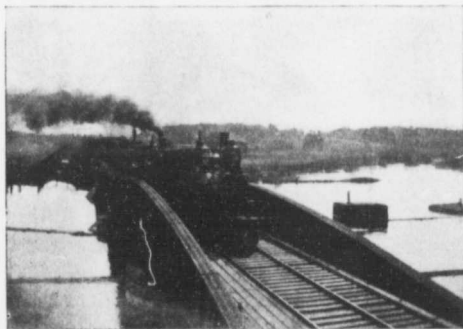


Jubilee Point.

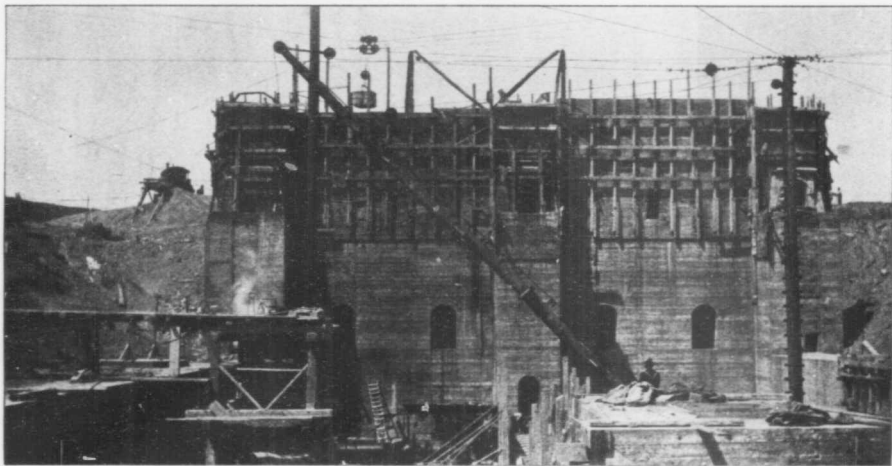
close contiguity to the river, partridge abound. On Rice Lake, is situated "Idyl Wyld," a beautifully-wooded park in the midst of one of the most picturesque regions of Canada. "Idyl Wyld," though in a charming secluded locality, has a daily mail, and is easy of access, with the additional attraction of good fishing, boating and bathing. There are several other attractive and favorite resorts on Rice Lake where the tourist and fisherman can spend a pleasant sojourn.

For the camper, cottager and tourist, Mr. W. H. Hamilton supplies all groceries that are wanted.

From Peterborough, there are several very pleasant drives, one in particular being to Chemong Park, a distance of six miles.



G. T. R. Bridge crossing the Otonabee River.



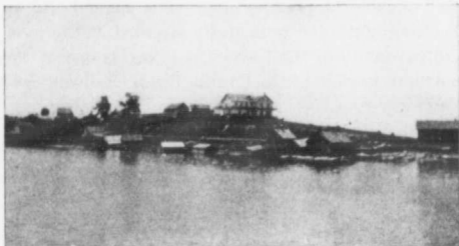
Lift-Lock at Peterborough, on the Trent Valley Canal.

Lakefield, a pretty village nine miles north of Peterborough, and beautifully situated at the eastern extremity of the Kawartha lakes, is one of the northern termini of the Grand Trunk Railway System, and one of the many eligible places near Peterborough for a summer holiday. It combines all the comforts of home and city life, its hotels being modern and comfortable. The village is lighted with electricity. The surrounding country is most picturesque and beautiful, and charming drives may be enjoyed in many directions. One of the principal industries of the place is boat-building, and there are several establishments from which all descriptions of craft may be secured, from a birch-



Deer Hunting on the Lakes.

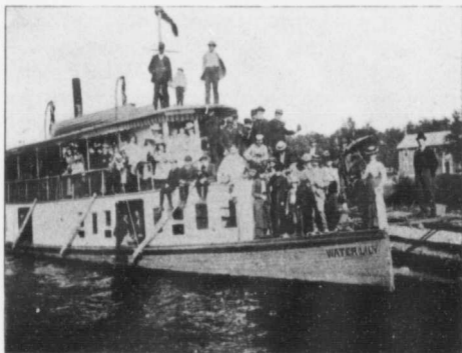
bark canoe to a steamboat. At this point, several nicely-furnished cottages are for rent for the summer months, the prices ranging from \$30 to \$40 per month. There is also an excellent house-boat, which can be secured at reasonable terms. The steamers plying on Stony Lake make this place their headquarters and make several trips daily to points on the different lakes, while frequent excursion parties from Lindsay or from points up the Kawartha lakes arrive at Lakefield. During the summer season, gaiety and life predominate at this point. The country around Peterborough is rich in minerals, and the whole region has recently become an extensive field for lovers of geological science.



Harwood, on Rice Lake.

Each recurring season finds additional devotees prospecting and testing for minerals, of which several rich deposits have been discovered.

**Chemong Park Hotel.**—This hotel is new and modern, having been in operation only a few years. It is situated about one hundred yards from Chemong Lake, on rising ground, and is surrounded by a forest of young pines; the park is laid out in avenues, and is the popular resort for many miles around. The rooms are large and airy, and well furnished, while the table is always supplied with every luxury that money can buy. If there is one thing Chemong is noted for, it is its fishing and hunting grounds; and fishing tackle, boats, etc., are kept on hand for use of guests. The golf links connected with the hotel are of the finest. It is



Str. "Water-Lily," on her daily trip down the Otonabee.

only six miles from Peterborough, with which it is connected by 'bus. Terms, \$7 to \$10 per week. Special rates to families. Further information will be cheerfully supplied on application to Mr. Geo. H. Brown, proprietor, Bridgenorth, Ont.



Chemong Park Hotel.

**Glenwood Island Summer Resort** is situated in the centre of Stony Lake, and is in the midst of scenery

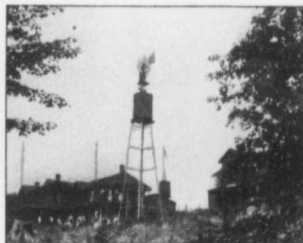


"Flash," D. Breeze, proprietor.

which in beauty and variety is unsurpassed. This resort is too widely and favorably known to make it necessary to insist on its charms; sufficient to say

that it is in the centre of noted fishing grounds for bass and maskinongé, that for boating and cruising it is well situated, that it has a daily mail, and steamer connection twice daily. The steam-yacht which we illustrate is run in connection with the hotel. Terms, \$6 to \$7 per week. Address: from June 16th to October 1st, Mr. D. Breeze, Stony Lake, P. O.; for the rest of the season, Peterborough, Ontario.

**Viamede**, Stony Lake's popular summer



Viamede, Lakefield.



Duck-hunters' Camp on the Kawartha Lakes.

resort, with accommodation for seventy guests, is beautifully situated in a park of sixteen acres at the base of Mount Julian. It is noted for its good fishing for both bass and maskinongé. The table is well supplied with seasonable food and an abundance of pure milk. The comfort of guests at Viamede is thoughtfully considered by the hostess. Accommodation can be obtained, from June 1st until October 31st, by communicating with



On the Lakes near Peterborough.

Mrs. W. M. Graham, Viamede, Lakefield, Ont.  
After June 15th, address Viamede, Mount Julian  
P. O., Ont.

Juniper Island, situated in the centre of Stony Lake, is the headquarters for many of the principal points on this lake. The supply store that caters to the wants of the cottager and hotel-keeper, is located here. There are also fine picnic grounds, a spacious pavilion and a quaint and picturesque chapel where service is held on Sundays.



On Stony Lake.

Canada has waited patiently for the attention that is now being bestowed upon her, and it was simply a matter of educating the ever-increasing brotherhood of tourists to the magnificent summer resorts in her confines and to the beautiful country in which are embedded the lovely inland lakes which surround the city of Peterborough. Each successive season has seen a phenomenal influx of visitors to these regions, which are becoming more and more popular year by year, and the coming season will see a large increase over the last.

E. T. Mason & Co., of Peterborough, make a specialty of supplies for campers and summer residents.

**Buffalo.** — When in Buffalo, tourists will find the Iroquois one of the finest hotels on the continent; it caters to the best class of travellers, and every comfort and convenience will there be found. The illustration gives a faint idea of this splendid edifice.



The Iroquois, at Buffalo.

### Customs Arrangements

Persons visiting Canada for a limited

time for pleasure, may bring with them such guns, fishing tackle, tents, camp equipment, cooking utensils, kodaks, bicycles, etc., as they may require for their own use, upon reporting same to the customs officer at port of entry, depositing with him a sum of money equal to the duty, subject to a refund of this amount if the articles are exported within six months, or they may be forwarded in bond to any point in Canada where a customs officer is stationed, where the same regulations as above must be complied with.



For CRUISE, CAMP,  
COTTAGE and  
PALACE

Nothing better  
than

MacLaren's

In  
White  
Opal Jars  
only

IMPERIAL  
CHEESE

Tuckett's

..Marguerite Cigars..

• • •

Largest Sale in Canada



Most Magnificent Scenic Route  
in the World, running through  
Niagara's Wonderful Gorge . .

The magnificent Whirlpool Rapids.  
The Whirlpool. Devil's Hole. Devil's  
Hole Rapids. Along the water's edge  
the entire distance :: :: :: :: ::

Wonderful Caves, Rapids, Battle Grounds and Historic Points



# FRED. A. CLARKE

: : : : FOR : : : :

## FINE FURS

Special  
attention  
paid to  
the Tourist trade. . . .



Show rooms  
open  
during  
. . . Summer season

*374 GEORGE STREET*

PETERBORO, .. .. ONT.

# W. H. HAMILTON



Campers' and Tourists' Supplies



We are fully equipped for this business

Groceries, Provisions, Etc.

ORDERS CAREFULLY PACKED  
AND PROMPTLY SHIPPED

: : Satisfaction Guaranteed : :

138 Simcoe St. : Telephone <sup>148</sup> : PETERBORO

# Lakefield Canoe Works

LAKEFIELD, ONT.

STRICKLAND & CO.

For Sale **Canoes and Boats** To Rent

LAKEFIELD ON THE KAWARTHA LAKES

DRINK



# Radnor

Fresh  
from the  
Lauren-  
tian  
Mountains

EMPRESS OF TABLE WATERS

A. KELLY EVANS

General Agent

25 FRONT ST. EAST, Telephone TORONTO  
Main 3354

# S. A. OKE

Telephone 18

Stoney Lake orders taken  
and delivered.

Fresh Vegetables

Fruits of all  
Descriptions

Fish Fresh Fish, Lobsters  
and Shell Fish.  
Frogs' Legs, Etc.

# John Leckie Limited

HEADQUARTERS FOR  
SAILS, TENTS, FLAGS

AND ALL YACHT AND  
CAMPING FITTINGS

## Acetylene Search Lights

Price, \$20.00

Show objects 300 feet. Cost 1½ cents  
per hour to operate. Generator inside

76 Wellington St. West, - TORONTO

## Richelieu & Ontario Navigation Co.'y

### Niagara to the Sea

Magnificent steel steamers leave Toronto for a delightful sail on Lake Ontario to Charlotte, thence to Kingston and Clayton and through the fascinating scenery of the Thousand Islands, descending all the rapids of the St. Lawrence to Montreal, where connection is made for a trip to Quebec, Murray Bay and points on the far famed Saguenay.

SUMMER HOTELS: Manoir Richelieu and Hotel Tadousac, charmingly situated at Murray Bay and Tadousac, under the Company's management.

For further particulars apply to

H. FOSTER CHAFFEE,  
2 King Street East,  
Toronto, Ont.

JOS. F. DOLAN  
128 St. James Street,  
Montreal, Que.

Or to THOS. HENRY, Traffic Manager, Montreal.

# C. B. ROUTLEY

Toronto  
Telephone  
3028 Main

Peterboro  
Telephone 366

Blotting  
Paper

If you want  
good goods cheap  
try

Routley's

: : : SPECIALTIES : : :

Souvenirs, Wall Papers, Curtain  
Poles, Room and Picture Mould-  
ings, China and Glassware, Win-  
dow Shades, Trunks and Valises,  
Crockery, Fancy Goods, Station-  
ery and School Supplies : : : : :

379 GEORGE ST., PETERBORO

DESBARATS & CO.  
ENGRAVERS AND PRINTERS  
MONTREAL

