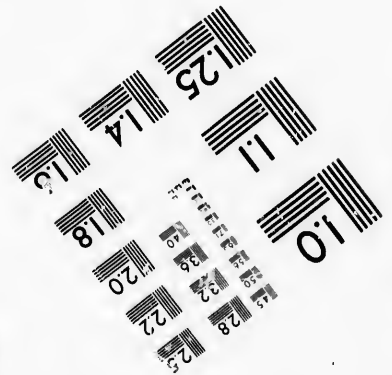
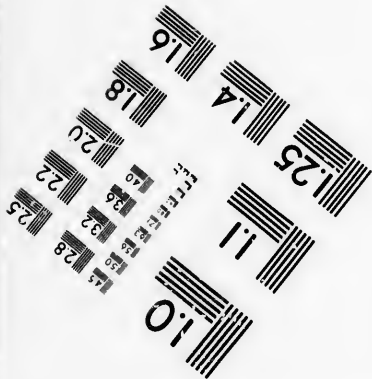
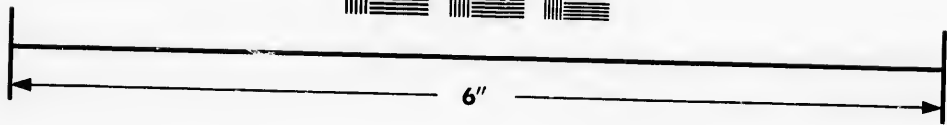
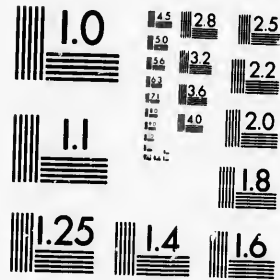


**IMAGE EVALUATION  
TEST TARGET (MT-3)**



**Photographic  
Sciences  
Corporation**

23 WEST MAIN STREET,  
WEBSTER, N.Y. 14580  
(716) 872-4503



**CIHM/ICMH  
Microfiche  
Series.**

**CIHM/ICMH  
Collection de  
microfiches.**



Canadian Institute for Historical Microreproductions / Institut canadien de microreproductions historiques



**© 1986**

Technical and Bibliographic Notes/Notes techniques et bibliographiques

The Institute has attempted to obtain the best original copy available for filming. Features of this copy which may be bibliographically unique, which may alter any of the images in the reproduction, or which may significantly change the usual method of filming, are checked below.

L'Institut a microfilmé le meilleur exemplaire qu'il lui a été possible de se procurer. Les détails de cet exemplaire qui sont peut-être uniques du point de vue bibliographique, qui peuvent modifier une image reproduite, ou qui peuvent exiger une modification dans la méthode normale de filmage sont indiqués ci-dessous.

- |  |  |
|--|--|
| <input type="checkbox"/> Coloured covers/<br>Couverture de couleur   | <input type="checkbox"/> Coloured pages/<br>Pages de couleur   |
| <input type="checkbox"/> Covers damaged/<br>Couverture endommagée  | <input type="checkbox"/> Pages damaged/<br>Pages endommagées   |
| <input type="checkbox"/> Covers restored and/or laminated/<br>Couverture restaurée et/ou pelliculée  | <input type="checkbox"/> Pages restored and/or laminated/<br>Pages restaurées et/ou pelliculées  |
| <input type="checkbox"/> Cover title missing/<br>Le titre de couverture manque   | <input type="checkbox"/> Pages discoloured, stained or foxed/<br>Pages décolorées, tachetées ou piquées  |
| <input type="checkbox"/> Coloured maps/<br>Cartes géographiques en couleur   | <input type="checkbox"/> Pages detached/<br>Pages détachées  |
| <input type="checkbox"/> Coloured ink (i.e. other than blue or black)/<br>Encre de couleur (i.e. autre que bleue ou noire)   | <input type="checkbox"/> Showthrough/<br>Transparence  |
| <input type="checkbox"/> Coloured plates and/or illustrations/<br>Planches et/ou illustrations en couleur  | <input type="checkbox"/> Quality of print varies/<br>Qualité inégale de l'impression   |
| <input type="checkbox"/> Bound with other material/<br>Relié avec d'autres documents   | <input type="checkbox"/> Includes supplementary material/<br>Comprend du matériel supplémentaire   |
| <input type="checkbox"/> Tight binding may cause shadows or distortion<br>along interior margin/<br>La reliure serrée peut causer de l'ombre ou de la<br>distorsion le long de la marge intérieure   | <input type="checkbox"/> Only edition available/<br>Seule édition disponible   |
| <input type="checkbox"/> Blank leaves added during restoration may<br>appear within the text. Whenever possible, these<br>have been omitted from filming/<br>Il se peut que certaines pages blanches ajoutées<br>lors d'une restauration apparaissent dans le texte,<br>mais, lorsque cela était possible, ces pages n'ont<br>pas été filmées. | <input type="checkbox"/> Pages wholly or partially obscured by errata<br>slips, tissues, etc., have been refilmed to<br>ensure the best possible image/<br>Les pages totalement ou partiellement<br>obscurcies par un feuillet d'errata, une pelure,<br>etc., ont été filmées à nouveau de façon à<br>obtenir la meilleure image possible. |

Additional comments:  
Commentaires supplémentaires:

[Printed ephemera] 1 sheet (verso blank) This copy is a photoreproduction.

This item is filmed at the reduction ratio checked below/  
Ce document est filmé au taux de réduction indiqué ci-dessous.

10X	14X	18X	22X	26X	30X
<input type="checkbox"/>	<input type="checkbox"/>	<input type="checkbox"/>	<input type="checkbox"/>	<input checked="" type="checkbox"/>	<input type="checkbox"/>
12X	16X	20X	24X	28X	32X

The copy filmed here has been reproduced thanks to the generosity of:

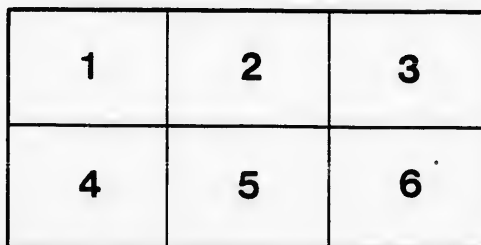
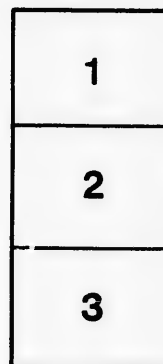
D. B. Weldon Library  
University of Western Ontario  
(Regional History Room)

The images appearing here are the best quality possible considering the condition and legibility of the original copy and in keeping with the filming contract specifications.

Original copies in printed paper covers are filmed beginning with the front cover and ending on the last page with a printed or illustrated impression, or the back cover when appropriate. All other original copies are filmed beginning on the first page with a printed or illustrated impression, and ending on the last page with a printed or illustrated impression.

The last recorded frame on each microfiche shall contain the symbol  $\rightarrow$  (meaning "CONTINUED"), or the symbol  $\nabla$  (meaning "END"), whichever applies.

Maps, plates, charts, etc., may be filmed at different reduction ratios. Those too large to be entirely included in one exposure are filmed beginning in the upper left hand corner, left to right and top to bottom, as many frames as required. The following diagrams illustrate the method:



L'exemplaire filmé fut reproduit grâce à la générosité de:

D. B. Weldon Library  
University of Western Ontario  
(Regional History Room)

Les images suivantes ont été reproduites avec le plus grand soin, compte tenu de la condition et de la netteté de l'exemplaire filmé, et en conformité avec les conditions du contrat de filmage.

Les exemplaires originaux dont la couverture en papier est imprimée sont filmés en commençant par le premier plat et en terminant soit par la dernière page qui comporte une empreinte d'impression ou d'illustration, soit par le second plat, selon le cas. Tous les autres exemplaires originaux sont filmés en commençant par la première page qui comporte une empreinte d'impression ou d'illustration et en terminant par la dernière page qui comporte une telle empreinte.

Un des symboles suivants apparaîtra sur la dernière image de chaque microfiche, selon le cas: le symbole  $\rightarrow$  signifie "A SUIVRE", le symbole  $\nabla$  signifie "FIN".

Les cartes, planches, tableaux, etc., peuvent être filmés à des taux de réduction différents. Lorsque le document est trop grand pour être reproduit en un seul cliché, il est filmé à partir de l'angle supérieur gauche, de gauche à droite, et de haut en bas, en prenant le nombre d'images nécessaire. Les diagrammes suivants illustrent la méthode.

ABSTRACT  
OF THE  
ORDINARY EXPENDITURE AND INCOME  
OF

# ST. ANDREW'S CHURCH

*1st Jan'y 1863*

	\$	cts.		\$	cts.
To Balance in Treasurer's hands, 1st Jan. 1862	55	10	By cash paid Rev. J. Scott Salary to 1st Jan. 1863	1000	00
To amount Received from Pew rents	959	41	By " " Precentor's " " "	125	00
To " " " Sabbath collections	821	23	By " " Ministerial Services	33	63
To " " " Burying ground	42	00	By " " College Collections	85	00
To " " " Baptisms	3	75	By " " Missionary	161	00
To balance due Treasurer at 1st Jan., 1863	102	77	By " " Sexton's salary to 1st Jan., 1863	75	00
			By " " For firewood	21	62
			By " " Middlesex Building Society	250	00
			By " " For Gas	45	10
			By " " Relief to Poor	46	50
			By " " General expenses (including McBride's account, \$20)	57	49
			By " " Synod Fund	30	00
			By " " Widow's "	14	00
			By " " Insurance	15	92
			By " " Interest	24	00
	\$1984	26		\$1984	26

STATEMENT OF SPECIAL SUBSCRIPTIONS ON ACCOUNT OF ST. ANDREW'S CHURCH  
DEBT, 16th JANUARY, 1863.

	\$	cts.		\$	cts.
1863			By amount of Notes paid off	2630	00
Jan. 16 To amount of subscription collected to date	3386	17	" " Interest on Mortgage and Notes Building Society on borrowed shares	382	62
To amount of collection in church, Dec. 28, 1862	36	00	" " Balance in Treasurer's hands, 16th Jan., 1863	283	88
	\$3422	17		\$3422	17

ASSETS.

	\$	cts.
To amount of pew rents overdue (about)	200	00
" Total amount of special subscription and collection	3676	00
Less amount paid as above	3422	17
" 20 shares, unborrowed, Middlesex Building Society	2400	00
" Balance of subscription in Treasurer's hands	283	88
Less balance due Treasurer on Revenue account	102	77
Total available assets	\$3034	94
Real estate—Churches and Manse (3 acres)	11,000	00
Burying ground (3 acres)	1,100	00
	\$15,134	94

LIABILITIES.

	\$	cts.
Amount due on Mortgage with interest	2100	00
" " two Notes " " "	754	00
" " Building Society for four borrowed shares	400	00
Total liabilities	\$3254	00
Balance of assets over Liabilities	11,880	94
	\$15,134	94

COMPARATIVE STATEMENT OF CHURCH DEBT, 1st JAN., 1862, AND 16th JAN., 1863.

	1862	1863
Jan. 1. Amount of debt per annual statement	5,990	29
Jan. 16. " " as above	3,254	00
Less balance on hand	181	11
	3,072	89

JOSEPH ATKINSON, )

