

**CIHM
Microfiche
Series
(Monographs)**

**ICMH
Collection de
microfiches
(monographies)**



Canadian Institute for Historical Microreproductions / Institut canadien de microreproductions historiques

© 1996

Technical and Bibliographic Notes / Notes technique et bibliographiques

The Institute has attempted to obtain the best original copy available for filming. Features of this copy which may be bibliographically unique, which may alter any of the images in the reproduction, or which may significantly change the usual method of filming are checked below.

- Coloured covers /
Couverture de couleur
- Covers damaged /
Couverture endommagée
- Covers restored and/or laminated /
Couverture restaurée et/ou pelliculée
- Cover title missing / Le titre de couverture manque
- Coloured maps / Cartes géographiques en couleur
- Coloured ink (i.e. other than blue or black) /
Encre de couleur (i.e. autre que bleue ou noire)
- Coloured plates and/or illustrations /
Planches et/ou illustrations en couleur
- Bound with other material /
Relié avec d'autres documents
- Only edition available /
Seule édition disponible
- Tight binding may cause shadows or distortion
along interior margin / La reliure serrée peut
causer de l'ombre ou de la distorsion le long de
le marge intérieure.
- Blank leaves added during restorations may appear
within the text. Whenever possible, these have
been omitted from filming / Il se peut que certaines
pages blanches ajoutées lors d'une restauration
apparaissent dans le texte, mais, lorsque cela était
possible, ces pages n'ont pas été filmées.
- Additional comments /
Commentaires supplémentaires:

L'Institut a microfilmé le meilleur exemplaire qu'il lui a été possible de se procurer. Les détails de cet exemplaire qui sont peut-être uniques du point de vue bibliographique, qui peuvent modifier une image reproduite, ou qui peuvent exiger une modifications dans la méthode normale de filmage sont indiqués ci-dessous.

- Coloured pages / Pages de couleur
- Pages damaged / Pages endommagées
- Pages restored and/or laminated /
Pages restaurées et/ou pelliculées
- Pages discoloured, stained or foxed /
Pages décolorées, tachetées ou piquées
- Pages detached / Pages détachées
- Showthrough / Transparence
- Quality of print varies /
Qualité inégale de l'impression
- Includes supplementary material /
Comprend du matériel supplémentaire
- Pages wholly or partially obscured by errata
slips, tissues, etc., have been refilmed to
ensure the best possible image / Les pages
totalement ou partiellement obscurcies par un
feuillet d'errata, une pelure, etc., ont été filmées
à nouveau de façon à obtenir la meilleure
image possible.
- Opposing pages with varying colouration or
discolourations are filmed twice to ensure the
best possible image / Les pages s'opposant
ayant des colorations variables ou des décolorations
sont filmées deux fois afin d'obtenir la
meilleure image possible.

This item is filmed at the reduction ratio checked below /
Ce document est filmé au taux de réduction indiqué ci-dessous.

10X	14X	18X	22X	26X	30X
				✓	
12X	16X	20X	24X	28X	32X

The copy filmed here has been reproduced thanks to the generosity of:

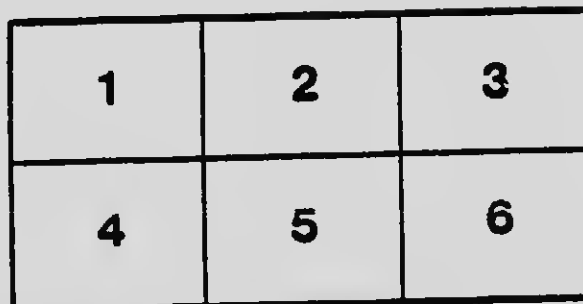
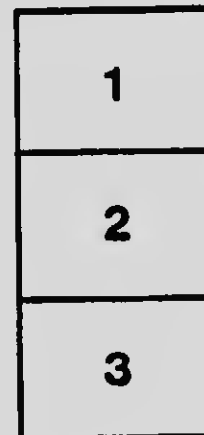
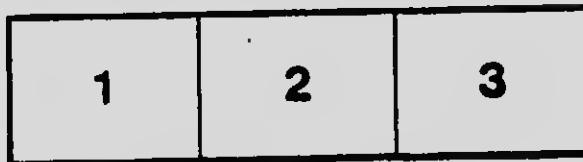
National Library of Canada

The images appearing here are the best quality possible considering the condition and legibility of the original copy and in keeping with the filming contract specifications.

Original copies in printed paper covers are filmed beginning with the front cover and ending on the last page with a printed or illustrated impression, or the back cover when appropriate. All other original copies are filmed beginning on the first page with a printed or illustrated impression, and ending on the last page with a printed or illustrated impression.

The last recorded frame on each microfiche shall contain the symbol \rightarrow (meaning "CONTINUED"), or the symbol ∇ (meaning "END"), whichever applies.

Maps, plates, charts, etc., may be filmed at different reduction ratios. Those too large to be entirely included in one exposure are filmed beginning in the upper left hand corner, left to right and top to bottom, as many frames as required. The following diagrams illustrate the method:



L'exemplaire filmé fut reproduit grâce à la générosité de:

Bibliothèque nationale du Canada

Les images suivantes ont été reproduites avec le plus grand soin, compte tenu de la condition et de la netteté de l'exemplaire filmé, et en conformité avec les conditions du contrat de filmage.

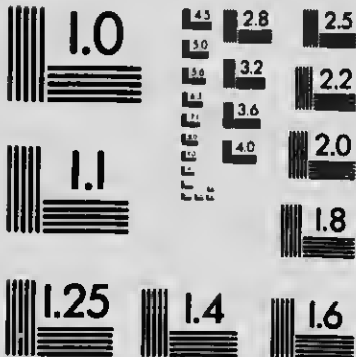
Les exemplaires originaux dont la couverture en papier est imprimée sont filmés en commençant par la première page et en terminant soit par la dernière page qui comporte une empreinte d'impression ou d'illustration, soit par la seconde page, selon le cas. Tous les autres exemplaires originaux sont filmés en commençant par la première page qui comporte une empreinte d'impression ou d'illustration et en terminant par la dernière page qui comporte une telle empreinte.

Un des symboles suivants apparaîtra sur la dernière image de chaque microfiche, selon le cas: le symbole \rightarrow signifie "A SUIVRE", le symbole ∇ signifie "FIN".

Les cartes, planches, tableaux, etc., peuvent être filmés à des taux de réduction différents. Lorsque le document est trop grand pour être reproduit en un seul cliché, il est filmé à partir de l'angle supérieur gauche, de gauche à droite, et de haut en bas, en prenant le nombre d'images nécessaire. Les diagrammes suivants illustrent la méthode.

MICROCOPY RESOLUTION TEST CHART

(ANSI and ISO TEST CHART No. 2)



APPLIED IMAGE Inc

1653 East Main Street 14609 USA
Rochester, New York
(716) 482 - 0300 - Phone
(716) 288 - 5989 - Fax

Some Statistical Statements

Showing the WORTH and WEALTH of
WINNIPEG and WESTERN CANADA

Recording the Progress and
Development of the Western
Metropolis and the Prairie
Provinces—the World's
Greatest Growing Market for
Merchants and Manufacturers

For additional copies of this Pamphlet, apply to
CHAS. F. ROLAND
Statistical Department, Winnipeg Industrial Bureau

Chas. F. Roland

HC118
W 52
S 65
1913

NATIONAL LIBRARY
CANADA
BIBLIOTHÈQUE NATIONALE

INDEX

WINNIPEG

	Page
Assessment Growth	4
Annual Bank Clearings	5
Banks	5
Bank Branches	6
Bank Clearings	5
Building Permits	4
Business Licenses	6
Customs Returns	3
Chartered Banks	5
Grain Inspections	9
Grain Market	9
Inland Revenue	3
Increase in Property Values	7
Industrial Growth	3
Institutional Investments	6
Location	3
Municipal Power	8
Monthly Bank Clearings	5
Manufacturing Growth	3
New Business Licenses	6
Power Plant	8
Population Growth	3
Postal Revenue	3
Property Values, Increase	7
River Tonnage—Ships	6
River Tonnage—Freight	6
Railway Mileage	3
Shipping, Port of Winnipeg	6
School Statistics	4
Transportation	3
Values, Increase in Property	7

WESTERN CANADA

Acreage Cultivated	9
Area	9
Assessment (cities)	11
Bank Clearings (cities)	11
Building Growth (cities)	10
Crop Statistics	9
Homestead Entries	9
Immigration	9
Institutional Investments	6
Population (cities)	10
Wheat Statistics	9
Wheat Inspected	9

SOME STATISTICAL STATEMENTS

INCREASE IN REALTY VALUES

Assessment Growth	Year	Realty		Total
		Assessment	Exemption	
	1900	\$21,116,000	\$5,657,650	\$26,973,650
	1901	22,855,000	5,919,600	28,303,200
	1902	23,038,800	6,558,000	30,406,920
	1903	30,873,910	7,722,770	38,596,680
	1904	41,106,870	9,489,030	50,595,900
	1905	53,786,070	11,876,170	65,662,240
	1906	69,621,550	15,128,030	84,752,580
	1907	93,825,960	18,587,910	112,413,900
	1908	102,785,170	21,737,990	124,523,160
	1909	107,997,320	23,405,520	131,402,840
	1910	157,608,220	28,261,920	185,870,140
	1911	172,677,250	27,511,350	200,188,600
	1912	214,360,140	33,241,140	247,601,580

1912 Tax Rate

12 mills

BUILDING PERMITS SHOW UNIQUE GROWTH

Annual Building Growth	Year	Permits	Buildings	Cost
	1900	530	638	\$1,441,863
	1901	630	820	1,708,557
	1902	822	973	2,408,125
	1903	1,227	1,593	5,689,400
	1904	1,768	2,268	9,651,750
	1905	3,340	4,099	10,840,150
	1906	3,487	4,204	12,625,950
	1907	2,433	2,827	6,309,950
	1908	1,544	1,769	5,513,700
	1909	2,498	2,942	9,226,325
	1910	3,291	3,916	15,116,450
	1911	3,671	4,342	17,550,400
	1912	4,489	5,046	20,563,570

REMARKABLE PROGRESS OF SCHOOLS

School Statistics	Year	No. of Teachers	No. of Buildings	Value of Sites and Buildings	Attendance
	1871	1	1		35
	1876	4	2	\$ 3,500	423
	1886	49	11	220,000	2,831
	1896	96	14	397,700	6,374
	1900	119	16	487,000	7,500
	1903	140	18	750,000	9,500
	1904	168	19	774,500	10,308
	1905	192	21	1,071,701	11,675
	1906	220	26	1,213,931	13,445
	1907	248	30	1,552,753	14,802
	1908	266	34	1,971,479	15,449
	1909	297	33	2,300,000	16,070
	1910	340	33	2,800,000	17,738
	1911	381	37	3,462,159	20,167
	1912	450	39	4,185,000	22,500

SOME STATISTICAL STATEMENTS

BANK CLEARANCES OVER \$1,500,000,000 IN 1912

Winnipeg Annual Bank Clearings	Year	
	1901	\$106,956,720
	1902	188,370,003
	1903	210,108,006
	1904	204,601,437
	1905	309,868,179
	1906	504,585,914
	1907	590,667,576
	1908	614,111,801
	1909	770,649,322
	1910	953,415,281
	1911	1,172,762,142
	1912	1,537,817,524

Winnipeg Monthly Bank Clearings 1910-11-12	1910	1911	1912
January	\$69,703,144	\$76,019,597	\$110,993,506
February	52,677,562	63,141,978	100,037,902
March	60,067,841	77,057,787	108,196,378
April	70,516,417	82,148,419	115,841,086
May	70,380,883	99,142,804	139,302,002
June	69,889,227	86,401,007	117,101,297
July	78,499,478	91,724,653	115,298,644
August	72,588,070	87,118,651	108,553,442
September	76,951,048	88,640,717	106,388,574
October	101,341,220	125,994,854	152,652,206
November	127,717,819	159,586,897	195,963,013
December	100,142,569	135,381,718	167,426,414
	<u>\$953,415,281</u>	<u>\$1,172,762,142</u>	<u>\$1,537,817,524</u>

WINNIPEG AS A FINANCIAL CENTRE

Chartered Banks in Winnipeg	Name of Bank	Opened in Winnipeg	Capital Stock		Reserve
			Subscribed	Paid-up	
	Merchants Bank	1873	\$6,747,680	\$6,747,680	\$6,410,760
	Bank of Montreal	1876	16,900,000	16,000,000	16,000,000
	Imperial Bank	1881	6,750,000	6,602,130	6,602,130
	Bank of Ottawa	1882	3,857,000	3,825,480	4,595,039
	Union Bk. of Can.	1882	8,000,000	5,000,000	3,300,000
	Bank of British North America	1886	4,866,666	4,866,666	2,774,000
	Molsons Bank	1891	4,000,000	4,000,000	4,700,000
	Bank of Hochelaga	1892	3,000,000	3,000,000	3,000,000
	Canadian Bank of Commerce	1893	15,000,000	15,000,000	12,500,000
	Bank of Hamilton	1896	3,000,000	3,000,000	3,500,000
	Dominion Bank	1897	5,000,000	5,000,000	6,000,000
	Bk. of Nova Scotia	1899	5,000,000	4,642,450	8,399,430
	Bank of Toronto	1905	5,000,000	5,000,000	6,000,000
	Trade Bank	1905	4,367,500	4,354,500	2,300,000
	Northern Crown Bank	1905	2,862,400	2,706,519	300,000
	Royal Bank	1906	11,560,000	11,560,000	13,170,219
	Home Bank	1907	1,370,000	1,286,050	175,000
	Sterling Bank	1909	991,900	991,900	390,000
	Quebec Bank	1910	2,500,000	2,500,000	1,250,000
	Standard Bank	1910	2,000,000	2,000,000	2,500,000

SOME STATISTICAL STATEMENTS

BRANCH BANKS IN WESTERN PROVINCES

Western Branch Banks	Year	Branches in			Total
		Manitoba	Saskatchewan	Alberta	
	1905	90	39	41	170
	1906	10	48	40	201
	1907	146	91	77	314
	1908	161	116	80	367
	1909	161	131	97	392
	1910	171	187	140	478
	1911	190	301	203	694
	1912	204	375	252	831

**INCREASE IN INSTITUTIONAL INVESTMENTS
IN PRAIRIE PROVINCES**

Institutional Investments 1910-11-12		Dec. 31,	Dec. 31,	Estimate at
		1910	1911	close of 1912
	Trust (a)	\$32,625,000	\$41,750,900	\$48,000,000
	Loan	71,160,318	93,757,231	118,000,000
	Insurance Companies	56,111,201	69,473,742	83,500,000
	Accident, etc., Companies	199,156	354,386	500,000
		<u>\$160,095,677</u>	<u>\$205,335,359</u>	<u>\$250,000,000</u>

(a) Including estimate of all clients' funds placed through trust companies.

**INCREASE IN WINNIPEG'S NEW BUSINESS
LICENSES**

Business Licenses— New	License	1905	1906	1907	1908	1909	1910	1911	1912
		Auctioneers	21	21	10	30	26	26	33
Billiard Rooms	56	61	66	71	75	81	86	89	
New Businesses established				31	258	224	175	275	
Business Colleges					9	10	10	10	
Dance Halls			3	7	9	14	10	14	
Drays	936	1168	855	795	1087	1287	1540	1775	
Laundries			110	115	115	125	137	143	
Scavengers	3	12	1	1	1	0	0	0	
Theatres	7	7	7	11	13	20	21	33	
Tobaccos	487	591	529	624	596	617	717	764	
Vi tualling	136	181	203	191	192	191	222	239	
Cigarette	71	93	112	133	119	192	245	297	
Cigar	357	441	398	427	407	417	476	534	

**RAPID INCREASE IN RIVER TRAFFIC—
PORT OF WINNIPEG**

Freight Tonnage Port of Winnipeg	Total Freight Tonnage		Total Vessel Tonnage Plying Up River, 1912	
	1911	1912	Steam Vessels	Sailing Vessels
	48,414	95,549	48,748	55,437
		49,414	Total 104,185	
	Total tonnage plying down river		106,538	

SOME STATISTICAL STATEMENTS

SPECIFIC INSTANCES ILLUSTRATING INCREASE
OF VALUES OF DOWN TOWN WINNIPEG
PROPERTY IN TEN YEARS

Winnipeg Property Values 1902-1912	Property	Price per	Approx. price	Times
		frontage ft. 1902	frontage ft. 1912	increased in 10 years
	"Free Press" property south- east corner Portage Ave. and Garry Street (two blocks west from Main St.)	\$150.00	\$1,700.00	10
	Eaton Store property, between Donald St. and Hargrave St. (four blocks west from Main St.)	200.00	4,500.00	20
	South-west corner Portage Ave. and Sherbrooke St. (seven- teen blocks west from Main St.)	65.00	2,000.00	30
	South-west corner Portage Ave. and Maryland St. (eighteen blocks west from Main St.)	50.00	1,200.00	24
	South-west corner Ellice Ave. and Smith St. (one block north of Portage Ave. and three blocks west of Main St.)	150.00	2,500.00 (sale)	16½
	North-east corner of Portage Ave. and Furby St. (seventeen blocks from Main St.)	60.00	1,521.00 (sale)	25½
	North-east corner Notre Dame Ave. and Albert St. (one block north-west from Port- age Ave. and distance of about two blocks from Main St.)	150.00	2,500.00 (sale)	16½
	South-east corner Notre Dame Ave. and Hargrave St.	60.00	1,200.00	20
	North-west corner Notre Dame and Sherbrooke St.	25.00	750.00	30
	National Trust property, north- east corner Main St. South and Notre Dame Ave. East (one block south of Portage Ave.)	450.00	3,000.00	6½
	Iroquois Hotel, Main St. North (nearly five blocks north of Portage Avenue)	500.00	2,250.00	4½
	South-west corner Main St. North and Rupert Ave. (seven blocks north of Port- age Avenue)	350.00	2,500.00	4½

SOME STATISTICAL STATEMENTS

THE WINNIPEG CIVIC HYDRO-ELECTRIC POWER AND LIGHT PLANT

Facts About
Winnipeg's
Big Municipal
Power Plant

The waterfalls and works are located at Point du Bois, on the Winnipeg River, seventy-seven miles north-east of the city of Winnipeg. The water fall (naturally 32 feet) is increased by the power development dam to 47 feet and the Winnipeg River at this point drains 50,000 square miles, and the "mill pond" contains 5,000 acres at the waterfall. The total available power without storage is 60,000 h.p., which can be increased to 100,000 h.p. The present installation is 28,000 h.p., the full capacity of the present building being 45,000 h.p. The average flow of water is 25,000 cubic feet per second. The transmission line (owned by the city) is 77 miles long and 100 feet wide, upon which is constructed one line of double towers, with transformer station and distributing stations in Winnipeg. The cost of the plant, including power house, dams, wires, forebay, tailrace, intake, rack piers, for full installation, machinery, transmission line, transformer station and distribution stations is \$5,400,000.00. The work of the first year's operation of the plant was entirely satisfactory. The cost of domestic lighting has been reduced seventy per cent., and that of power proportionately, and the plant is already paying its way, the revenue monthly covering the cost of interest, operating expenses, depreciation, advertising and other expenses.

This power development gives cheap power and light for manufacturers and decreases the cost of street lighting, water works operation and general municipal activities, besides adding to the convenience, comfort, cleanliness, healthfulness and economy of Winnipeg's homes. It has established Winnipeg as the magnet for manufacturers to supply this great Western market and created a solid foundation upon which Winnipeg can compete industrially with all Canada, thus bringing to this city needed manufacturing plants for the making of agricultural implements, railway cars, paper and straw boards—flax and jute products—beet sugar and starches—automobiles and commercial motors—furniture—building material—hardware specialties, stoves, ranges and furnaces—chemical products—clothing—boots and shoes; and many other lines that are now imported in large quantities.

For special reports on the manufacturing possibilities in any line of industry, write

CHAS. F. ROLAND, Commissioner,
Winnipeg, Manitoba.

SOME STATISTICAL STATEMENTS

WESTERN CANADA

PROVINCES OF MANITOBA, SASKATCHEWAN, ALBERTA

Area	Manitoba	161,414,758 acres
	Saskatchewan	155,092,480 "
	Alberta	162,755,200 "
	Less than ten per cent. of the arable land under cultivation in 1912.	

Acreage Under Cultivation (Cereals only)	1900	3,491,413
	1906	7,894,666
	1911	14,626,234
	1912	16,144,000

Winnipeg as a Grain Market
As a grain centre, Winnipeg is the largest primary grain market in the world. Wheat inspected at Winnipeg 1910, 88,269,300 bush.; 1911, 101,326,250 bush.; 1912, 143,682,750 bush.

COMPARATIVE YIELDS OF WHEAT, OATS AND BARLEY IN THE PRAIRIE PROVINCES FOR THE YEARS 1912-11-06 AND 1900

Crop Statistics Manitoba Saskatchewan and Alberta	Provinces	1912 bush.	1911 bush.	1906 bush.	1900 bush.
		Prairie Provinces Total			
	Wheat	183,322,000	194,083,000	110,586,824	23,456,859
	Oats	221,857,000	212,819,000	110,569,628	16,653,681
	Barley	26,671,000	24,043,000	18,684,609	3,141,121
	Manitoba				
	Wheat	58,899,000	60,275,000	54,472,198	18,352,929
	Oats	53,806,000	57,893,000	44,643,300	10,952,365
	Barley	14,965,000	14,447,000	11,979,554	2,666,567
	Saskatchewan				
	Wheat	93,849,000	97,665,000	50,182,359	4,306,091
	Oats	105,115,000	97,962,000	41,899,257	2,270,057
	Barley	5,926,000	5,445,000	2,828,587	187,211
	Alberta				
	Wheat	30,574,000	36,143,000	5,932,267	797,839
	Oats	62,936,000	56,964,000	24,027,071	3,791,259
	Barley	5,780,000	4,151,000	3,876,468	287,343

MANITOBA, SASKATCHEWAN AND ALBERTA

Homestead Entries	Year	Number	Year	Number
	1907	26,647	1910	41,586
	1908	30,424	1911	44,479
	1909	39,081	1912	39,151

Immigration into Manitoba, Saskatchewan and Alberta

Immigration to Western Canada	1901	49,149	1911	228,164
	1906	189,064	1912	325,000

It is stated on the authority of the Immigration Commissioner at Winnipeg that the 358,859 immigrants who have crossed from the United States to Canada during the past three years have brought with them, in cash and effects, over \$350,000,000.

SOME STATISTICAL STATEMENTS

WESTERN CANADIAN CITIES

POPULATION INCREASE IN WESTERN CITIES

City	1901	1906	1907	1908	1909	1910	1911	1912
Winnipeg	42,340	90,153	111,729	118,252	122,390	151,450	172,000	200,000
Brandon	5,620	10,408	10,750	11,282	13,000	13,540	13,837	14,000
Calgary	4,091	11,976	20,040	25,000	29,265	40,000	45,000	74,000
Edmonton	2,626	11,167	18,000	20,000	25,000	27,500	53,000	60,000
Lethbridge	2,072	2,313	3,700	6,020	10,000	11,000	12,000	13,000
Medicine Hat	1,570	3,020	7,500	10,100	12,000	15,000	17,000	25,000
Moose Jaw	1,558	6,249	4,609	6,269	7,000	7,200	7,500	7,630
Portage la Prairie	3,901	5,106	9,000	10,000	13,500	17,000	21,000	30,210
Prince Albert	1,785	3,005	9,000	10,000	12,100	15,000	16,000	27,000
Regina	2,249	6,169	9,000	10,000	13,500	17,000	21,000	30,210
Saskatoon	113	3,011	9,000	10,000	12,100	15,000	16,000	27,000

WESTERN BUILDING PERMITS FOR 1912 INCREASE 64.6 PER CENT. OVER 1911

Growth in Building	1909	1910	1911	1912
Brandon	\$350,120	\$1,224,385	\$1,108,129	\$1,160,214
Calgary	2,420,450	5,589,594	12,709,478	20,394,220
Edmonton	2,128,161	2,161,356	3,797,525	14,446,819
Lethbridge	1,268,215	1,211,310	1,033,980	1,358,250
Medicine Hat	228,168	427,140	450,000	2,836,239
Moose Jaw	512,440	1,071,090	2,475,736	5,275,797
Prince Albert	141,810	662,475	921,145	2,006,925
Regina	744,479	2,416,288	5,088,110	8,047,309
Saskatoon	1,002,055	2,817,771	4,920,000	7,640,530
Winnipeg	9,226,325	15,116,450	17,550,000	29,563,750

SOME STATISTICAL STATEMENTS

BANK CLEARINGS OF WESTERN CITIES

Growth in Bank Clearings	1906	1908	1910	1911	1912
Winnipeg	\$504,585,914	\$614,111,801	\$953,415,281	\$1,172,762,142	\$1,537,817,524
Brandon	29,430,274	32,297,075
Calgary	41,771,924	64,815,227	150,677,031	218,681,921	275,491,303
Edmonton	3,936,721	38,596,505	71,635,122	121,438,391	220,727,617
Lethbridge	28,818,693	33,485,946
Moose Jaw	39,872,743	65,136,326
Regina	50,739,159	73,032,088	115,727,647
Saskatoon	63,557,142	115,898,467

ASSESSMENT SHOWS LARGE INCREASE

Growth in City Assessment	1904	1906	1908	1910	1911	1912	Increase of 1912 over 1911
Brandon	\$3,345,789	\$8,044,946	\$ 9,252,822	\$9,573,740	\$12,415,310	\$11,626,760	\$788,550
Calgary	4,099,437	7,771,921	17,941,678	30,796,092	52,747,600	111,598,135	55,850,000
Edmonton	2,580,986	15,980,242	20,903,910	30,105,110	46,494,740	123,512,590	77,017,850
Lethbridge	1,128,996	1,630,686	3,664,608	9,603,365	11,908,555	16,182,000	4,273,445
Medicine Hat	1,900,000	3,998,391	4,134,094	9,000,000	14,000,000	5,000,000
Moose Jaw	1,662,990	3,951,770	9,222,260	15,090,383	20,006,099	56,755,468	36,749,369
Portage la Prairie	3,272,000	4,578,888	4,895,133	5,300,388	5,783,570	116,818
Prince Albert	1,208,000	2,208,000	4,525,758	6,018,687	10,362,532	17,866,112	4,343,845
Regina	2,284,710	6,448,000	12,401,380	18,211,950	34,840,733	54,999,942	20,159,209
Saskatoon	555,094	2,517,145	7,205,285	10,571,215	23,392,528	39,867,465	16,474,937
Winnipeg	41,106,870	69,624,550	102,790,170	157,608,220	172,677,250	214,360,440	41,683,190

WINNIPEG INDUSTRIAL BUREAU

STATISTICAL DEPARTMENT

The Canadian West offers many opportunities for manufacturers and capitalists and men with push and pluck.

Twenty-eight business bodies of the city of Winnipeg conduct a **Bureau of Information** upon Winnipeg and the West's wonderful opportunities. The Bureau has compiled statistics in every line of business and industry, which are supplied free to interested parties.

The remarkable development of this great central market—the greatest growing market in the world—is creating an unprecedented demand for home industries.

WINNIPEG WANTS THESE MANUFACTURERS and offers greater combined advantages than any city in Canada.

WINNIPEG OFFERS ELECTRIC POWER AND LIGHT AT COST.

If you are interested, write for illustrated literature and special reports on the manufacturing possibilities in any line of industry.

CHAS. F. ROLAND, Commissioner

Bureau Building

WINNIPEG - - - CANADA

