

**CIHM  
Microfiche  
Series  
(Monographs)**

**ICMH  
Collection de  
microfiches  
(monographies)**



**Canadian Institute for Historical Microreproductions / Institut canadien de microreproductions historiques**

**© 1995**

## Technical and Bibliographic Notes / Notes technique et bibliographiques

The Institute has attempted to obtain the best original copy available for filming. Features of this copy which may be bibliographically unique, which may alter any of the images in the reproduction, or which may significantly change the usual method of filming are checked below.

- ☒ Coloured covers / Couverture de couleur
- ☐ Covers damaged / Couverture endommagée
- ☐ Covers restored and/or laminated / Couverture restaurée et/ou pelliculée
- ☐ Cover title missing / Le titre de couverture manque
- ☐ Coloured maps / Cartes géographiques en couleur
- ☒ Coloured ink (i.e. other than blue or black) / Encre de couleur (i.e. autre que bleue ou noire)
- ☒ Coloured plates and/or illustrations / Planches et/ou illustrations en couleur
- ☐ Bound with other material / Relié avec d'autres documents
- ☐ Only edition available / Seule édition disponible
- ☐ Tight binding may cause shadows or distortion along interior margin / La reliure serrée peut causer de l'ombre ou de la distorsion le long de la marge intérieure.
- ☐ Blank leaves added during restorations may appear within the text. Whenever possible, these have been omitted from filming / Il se peut que certaines pages blanches ajoutées lors d'une restauration apparaissent dans le texte, mais, lorsque cela était possible, ces pages n'ont pas été filmées.
- ☐ Additional comments / Commentaires supplémentaires:

L'Institut a microfilmé le meilleur exemplaire qu'il lui a été possible de se procurer. Les détails de cet exemplaire qui sont peut-être uniques du point de vue bibliographique, qui peuvent modifier une image reproduite, ou qui peuvent exiger une modifications dans la méthode normale de filmage sont indiqués ci-dessous.

- ☐ Coloured pages / Pages de couleur
- ☐ Pages damaged / Pages endommagées
- ☐ Pages restored and/or laminated / Pages restaurées et/ou pelliculées
- ☒ Pages discoloured, stained or foxed / Pages décolorées, tachetées ou piquées
- ☐ Pages detached / Pages détachées
- ☒ Showthrough / Transparence
- ☐ Quality of print varies / Qualité inégale de l'impression
- ☐ Includes supplementary material / Comprend du matériel supplémentaire
- ☐ Pages wholly or partially obscured by errata slips, tissues, etc., have been refilmed to ensure the best possible image / Les pages totalement ou partiellement obscurcies par un feuillet d'errata, une pelure, etc., ont été filmées à nouveau de façon à obtenir la meilleure image possible.
- ☐ Opposing pages with varying colouration or discolourations are filmed twice to ensure the best possible image / Les pages s'opposant ayant des colorations variables ou des décolorations sont filmées deux fois afin d'obtenir la meilleure image possible.

**This item is filmed at the reduction ratio checked below/  
Ce document est filmé au taux de réduction indiqué ci-dessous.**

A horizontal number line with 13 equal segments, creating 14 tick marks. The tick marks are labeled with algebraic expressions: 10x, 14x, 18x, 22x, 26x, 30x (above the line) and 12x, 16x, 20x, 24x, 28x, 32x (below the line). A checkmark is drawn in the second segment, between 10x and 14x.

The copy filmed here has been reproduced thanks to the generosity of:

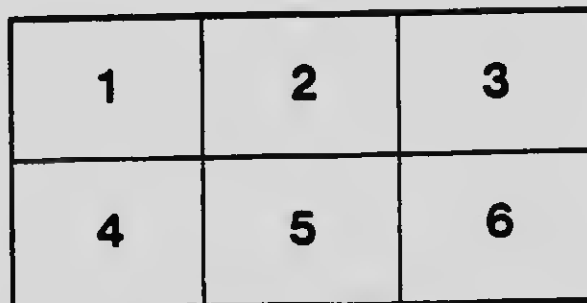
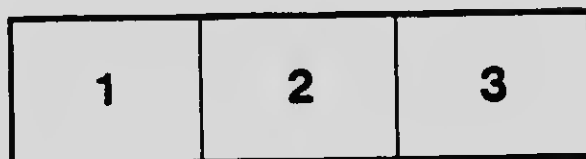
National Library of Canada

The images appearing here are the best quality possible considering the condition and legibility of the original copy and in keeping with the filming contract specifications.

Original copies in printed paper covers are filmed beginning with the front cover and ending on the last page with a printed or illustrated impression, or the back cover when appropriate. All other original copies are filmed beginning on the first page with a printed or illustrated impression, and ending on the last page with a printed or illustrated impression.

The last recorded frame on each microfiche shall contain the symbol  $\rightarrow$  (meaning "CONTINUED"), or the symbol  $\nabla$  (meaning "END"), whichever applies.

Maps, plates, charts, etc., may be filmed at different reduction ratios. Those too large to be entirely included in one exposure are filmed beginning in the upper left hand corner, left to right and top to bottom, as many frames as required. The following diagrams illustrate the method:



L'exemplaire filmé fut reproduit grâce à la générosité de:

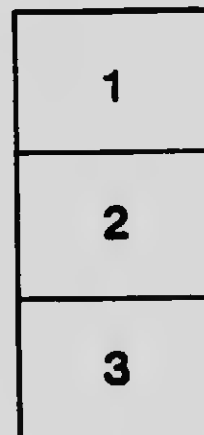
Bibliothèque nationale du Canada

Les images suivantes ont été reproduites avec le plus grand soin, compte tenu de la condition et de la netteté de l'exemplaire filmé, et en conformité avec les conditions du contrat de filmage.

Les exemplaires originaux dont la couverture en papier est imprimée sont filmés en commençant par le premier plat et en terminant soit par la dernière page qui comporte une empreinte d'impression ou d'illustration, soit par le second plat, selon le cas. Tous les autres exemplaires originaux sont filmés en commençant par la première page qui comporte une empreinte d'impression ou d'illustration et en terminant par la dernière page qui comporte une telle empreinte.

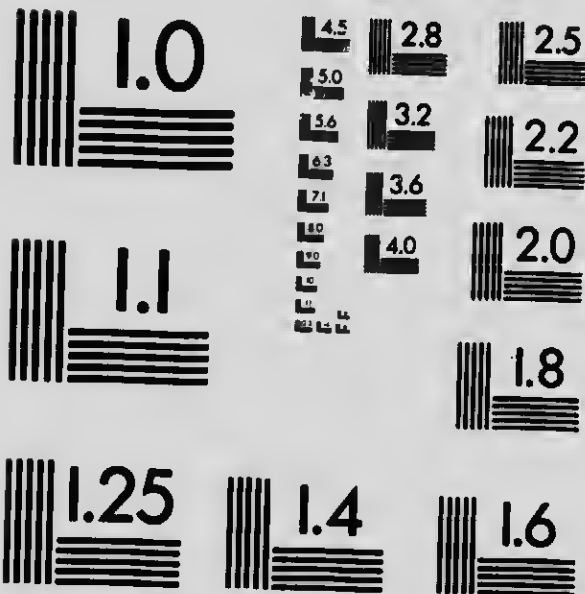
Un des symboles suivants apparaîtra sur la dernière image de chaque microfiche, selon le cas: le symbole  $\rightarrow$  signifie "A SUIVRE", le symbole  $\nabla$  signifie "FIN".

Les cartes, planches, tableaux, etc., peuvent être filmés à des taux de réduction différents. Lorsque le document est trop grand pour être reproduit en un seul cliché, il est filmé à partir de l'angle supérieur gauche, de gauche à droite, et de haut en bas, en prenant le nombre d'images nécessaire. Les diagrammes suivants illustrent la méthode.



# MICROCOPY RESOLUTION TEST CHART

(ANSI and ISO TEST CHART No. 2)



**APPLIED IMAGE Inc**

1653 East Main Street  
Rochester, New York 14609 USA  
(716) 482 - 0300 - Phone  
(716) 288 - 5989 - Fax



View of Business Section of Lethbridge, the Coal City of the Wheat Country. See pages 39, 46 and 52.

View of Business Section of Lethbridge, the Coal City of the Wheat Country. See pages 39, 46 and 53.

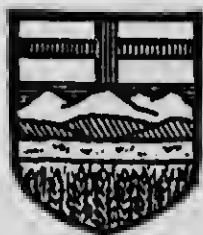
# **Opportunities in Alberta**

**1913**

**Provincial Booklet Series**



**Containing Extracts from  
Heaton's Annual**



**Heaton's Agency, Toronto**

**Copyright by Ernest Heaton  
Toronto, 1913**

## **This Booklet Contains Extracts** from



**HEATON'S ANNUAL** (The Commercial Handbook of Canada) contains the Canadian Customs Tariff and general and local information. Price, 5/- (\$1.00); postage, 6d. (12 cents).

**HEATON'S OPPORTUNITIES IN CANADA** contains descriptions of towns and farming districts, and Crown Land Regulations in every Province. Price, 1/6 (35 cents); postage, 2½d. (5 cents).

For sale by all leading booksellers in Canada,  
Great Britain and the United States, or by

**Heaton's Agency, Toronto, Canada**

To secure Special Attention, mention Heaton's Annual when  
writing to Local References

# Opportunities in Alberta

## General Information

**AGRICULTURAL COLLEGES.** The Provincial Government has decided to establish Agricultural Colleges at Claresholm, Olds and Vermilion. It is proposed that there should be a two years' course at these colleges, and that a central Agricultural College shall be established later on, where higher instruction will be given and a degree conferred.

**AREA.** Alberta has 253,540 sq. miles, as compared with Great Britain and Ireland, 121,377; France, 207,220; Germany, 208,850; Austria-Hungary, 241,433; New England States, U.S.A., 165,745. The province contains 100,000,000 acres of cultivable land, of which less than 2,000,000 are actually under crop.

**CLIMATE.** There is one common flora requiring a high summer temperature from U.S. boundary to Lake Athabasca, i.e., the Northern Districts are in the same class for grain culture as the country near Winnipeg, Regina, or Calgary. The chief factors of the Alberta climate are:

**CHINOOK WINDS.** Warm winds blowing from the mountains, though more common in the South, occur along the whole range of the Rockies. They have been known to cause a rise in temperature of 60 degrees in a few hours.

**ISOTHERMAL LINES.** On the east the isothermal lines turn northward from the west coast of Hudson's Bay. On the west they turn north from the Gulf of California, cross the Rockies at the s.w. corner of Alberta, meeting the eastward currents about the Hand Hills.

**ALTITUDE.** South of the U.S. boundary is a plateau 500,000 sq. miles at 6,000 ft. above sea level, falling at the boundary to 4,000 ft. and 700 miles farther north to 1,000 ft.

**SUNSHINE.** In the north, from June 1st to August 1st, there are but 2 hours of darkness. The sun works longer.

**RAINFALL.** The greatest rainfall is in May, June, July and part of August—the growing season. The latter part of August and September are dry.



## GENERAL INFORMATION

**DEMONSTRATION FARMS.** In 1911 the Legislature decided to establish 6 demonstration farms in various districts.

**DOMINION GRAZING LEASES.** Grazing leases of Dominion Lands unsuitable for agricultural purposes may be secured in certain districts in that portion of the Province of Alberta lying south of the northern boundary of Township 28. Leases shall not exceed 21 years. Maximum area covered by a lease, 100,000 acres. Lands leased are not subject to homestead entry or sale, but the Minister of the Interior may cancel a leasehold, or any portion thereof, by giving 2 years' notice. The rental chargeable is 2c. per acre per annum. Applicant must own 1 head of cattle or 5 head of sheep for every 60 acres applied for. At the end of 3 years lessee must have 1 head of cattle or 5 sheep for every 20 acres leased, and must maintain stock in this proportion during the continuance of his lease. A map showing the sheep-grazing districts may be secured on application to the Secretary of the Department of the Interior, Ottawa. Apply to the Secretary, Department of the Interior, Ottawa.

**DOMINION HOMESTEADS—HOW TO MAKE SELECTION.** Homesteads in the Prairie Provinces are being rapidly taken up. It is, therefore, practically impossible to make a selection by correspondence. First visit in person the office of J. Bruce Walker, Commissioner of Immigration, near the C.P.R. station at Winnipeg. Here maps can be consulted and definite information obtained of Dominion Lands unallotted to date, the character of the soil, and a description of any district. Choose a locality and make alternative selections of homesteads, then apply to the Dominion Lands Agent in that locality.

**DOMINION HOMESTEAD REGULATIONS.** The land is surveyed into townships 6 miles square, divided into 36 sections of 640 acres each. Sections 11 and 29 are reserved for school purposes; Sections 8 and 26 belong to the Hudson Bay Co. Other sections are available for homesteading. Any person who is sole head of a family, or any male over 18 years old, who is a British subject, or declares his intention to become a British subject, or a widow with minor children of her own dependent on her for support, may, on payment of ten dollars, obtain entry for a quarter section (160 acres more or less) of Dominion Lands in Alberta. Applicant must appear in person at the Dominion Lands Agency or sub-agency for the district. Entry by proxy may be made at any agency

for a father, mother, son, daughter, brother or sister, if eligible, and when duly authorized by the prescribed form. Duties: Erection of a habitable house, 6 months' residence and cultivation of land in each of 3 years. A homesteader may live within 9 miles of his homestead on a farm of at least 80 acres, solely owned and occupied by him or by his father, mother, son, daughter, brother or sister, or upon a homestead entered for and occupied by them within the prescribed distance. Before applying for patent, homesteader must break 30 acres and crop 20, part of work being done each year. If residing in vicinity, as stated above, he must break 50 acres and crop 30.

**PRE-EMPTION.** In some districts of Southern Alberta, a person who has secured a homestead may pre-empt an additional one-quarter section adjoining the homestead or separated therefrom by only a road allowance, provided he has not before obtained a pre-emption under Dominion Lands Act. Entry fee, \$10. Duties: (1) Residence of 6 months in each of 6 years on either homestead or pre-emption. (2) Erection of a habitable house on either homestead or pre-emption. (3) Cultivation of 80 acres of either homestead or pre-emption. Price \$3 per acre, payable  $\frac{1}{3}$  at end of 3 years from date of entry, balance in 5 equal instalments with interest at 5%.

**DOMINION SCHOOL LANDS.** These comprise Sections 11 and 29 in every township in Alberta. They are administered by the Dominion Government in trust for the province, and can only be disposed of by sale at public auction to the highest bidder, subject to a certain upset price. The sales are held yearly, provided the conditions are favorable, the lands being first inspected and valued to determine the upset price. Terms: One-tenth cash and balance in nine equal annual instalments with interest at 5%. Scrip or warrants are not accepted in payment. There are no settlement conditions. Grazing permits for these lands are also granted annually at the rate of four cents per acre in Alberta. Leases for coal mining are issued for a term of 21 years at a rate of \$1.00 per acre and subject to a Royalty of five cents per ton. The revenue from these lands is invested in Dominion Securities, and the interest thereon paid to the province yearly to be used for educational purposes.

**DOMINION SCRIP—HALF-BREED SCRIP.** Scrip has been issued to the half-breeds of the Western Provinces in satisfaction of claims arising out of the extinguishment of the Indian title. The scrip is a Government certificate



An Oil Well in the Morinville District. See paragraph under Mining, "Oil Lands—Alvo von Alvensleben, Ltd.," page 24

entitling the grantee to personally locate 240 acres of land in Alberta without conditions as to residence or improvements. Letters patent will be granted by the Crown for the lands selected to the entrant or his assignee. Scrip has also been issued to half-breeds redeemable at its face value in payment for Dominion Lands. If land scrip is taken the purchaser should be careful to see that the land is located by the original grantee. The quantity obtainable is limited. Scrip is held for sale by bankers and brokers in the Western Provinces.

**DOMINION SCRIP—VOLUNTEER SCRIP.** Scrip has been issued by the Dominion Government for military services redeemable within a given time limit, entitling the grantee to locate lands in Alberta, and to obtain a patent therefor. The time limit has expired in every case, including the South African scrip, which expired on 31st December, 1912. An exception to the limit rule is the scrip issued to members of the Red River expeditions in 1870-71-72-73. Write Secretary, Department of Interior, Ottawa.

**EDUCATION.** A school district may be formed as soon as there are 8 children in a section. The Government grants to the public schools constitute 66% of their maintenance. 850 new school districts were established between 1906 and 1911. In 1910, 55,307 pupils were enrolled. The Provincial Normal School is at Calgary. The University of Alberta at Strathcona has 140 students for degrees in arts and applied science.

**FRANCHISE.** To vote for a member of the Dominion or Provincial Governments it is necessary to be native-born or a naturalized British subject, with 12 months' residence in Canada and 3 months in the province. In municipal elections, men and women of any nationality, being property holders, may vote, even on such matters as taxation.

**INDIANS.** In 1911, there were 8,934 treaty Indians, living on Reserves scattered throughout the province. The total value of their real and personal property was estimated at \$9,112,734. They owned 5,000 acres of land; produced grain, roots and hay worth \$110,407, and beef worth \$77,221. Every man, woman and child receives annually \$5 from the Dominion Govt., every chief \$25, and councillor \$15. The Blood Reserve in S. Alberta covers 540 sq. miles. The Blackfoot Reserve, 50 miles east of Calgary, 470 sq. miles. The Pelgan, 93.

400 acres. The Stony, 69,720 acres. The Sarcee, 69,120 acres. The Saddle Lake, 82,560 acres. and there are several smaller reserves.

**LABOUR.** 90% of the skilled labour in Alberta is controlled by trades unions. Several of these are international in character, with local branches, and many British unions are represented. See under Wages.

**LAKES.** The principal lakes in Alberta, with area shown in acres, are as follows:

Atabasca (part).	666,400	Claire.....	259,000
Beaver.....	57,000	Lesser Slave.....	307,000
Biche, Lac la.....	80,000	Pakowski.....	46,000
Buffalo.....	35,000	Sullivan.....	60,000

**MANUFACTURES.** According to statistics published by the Dominion Govt., the value of manufactured products in Alberta was, in 1900, \$1,313,320; in 1910, \$18,788,826. The value of manufactured products in Calgary was \$599,444 in 1900; \$7,751,011 in 1910; increase, 1,193.03%. In Edmonton, \$243,778 in 1900; \$4,493,304 in 1910; increase 1,743.15%.

**NORTHERN ALBERTA.** See Northern Alberta on page 51, and Peace River Country on page 55. Further information can be found in the following Government Publications, which will be supplied free on application: Report Superintendent of Forestry, 1907, Appendix No. 11, and Reports Geological Survey of Canada, especially the following: Explorations along the proposed line of Hudson Bay Ry., by W. McInnes, in Summary Report of Geological Survey, 1906; The Doobaunt, Kazan and Ferguson Rivers and N.W. coast of Hudson Bay, by J. B. Tyrell; Report of Geological Survey, 1896, Part F; Summary Report, Geological Survey, 1905, pages 44, 71 and 72; Report of Explorations in Yukon and Mackenzie Basins, by R. G. McConnell, in Report of Geological Survey, 1888-89, Part D; Summary Report Geological Survey, 1900, page 103; The New Northwest Explorations, by F. J. Plerean, C.E., and The New Northwest, Senate Report of 1907, published by Ry. Lands Branch, Dept. of Interior; Canadian Forestry Journal, Vol. IV, page 202; Report Northwest Mounted Police, 1908, Appendix P; Bulletin 17 Forestry Branch, and Report Director of Forestry, 1912. Write for above to Department of the Interior, Ottawa.

**PARLIAMENTARY REPRESENTATION.** Alberta is represented in the Dominion Parliament by 7 members.

In consequence of the increased population shown by the 1911 census, it is possible that 5 additional seats may be assigned. In the Provincial House there are 41 representatives.

**POPULATION.** According to the Dominion Census, the total population of Alberta was 73,022 in 1901 and 374,663 in 1911; the rural population was 52,399 in 1901 and 232,726 in 1911; the urban population, 20,623 in 1901 and 141,937 in 1911.

**RAINFALL.** See under Temperature and Rainfall

**RECORD RAILWAY CONSTRUCTION.** In 1912 the C.N.R. completed one mile of railway per day, i.e., 362 miles of track on main line and branches, and 462 miles of grading. 868 miles of surveys were made. These roads will be built as soon as men and material can be obtained.

**RIVERS.** The N. Saskatchewan River, 760 miles long, rises near the 52nd parallel, flows n. and e., receiving the Brazeau, Sturgeon, Vermilion and other smaller rivers from the north, and the Clearwater, Battle and others from the south and meets the S. Saskatchewan River about the centre of the province. The S. Saskatchewan River, 865 miles long, is formed by the Old Man's, Big Bow, Little Bow, Belly, St. Mary's, Waterton, Red Deer and other smaller rivers rising in the Rockies and foothills of the south-west.

The Athahasca River flows northerly from the Rocky Mts. to Lake Athahasca, receiving the McLeod, Pembina and La Biche from the s.e. and the Baptiste, Little Slave and Pelican from the n.w. The Peace River, which is over 1,000 miles long, and enters the province by the Peace River Pass, also flows into Lake Athahasca, receiving the Smoky, Loon, Red River and other tributaries. From Lake Athahasca the Slave River takes these waters into the Great Slave Lake and they flow thence as the Mackenzie River into the Arctic Ocean. This chain of waters, known as the Mackenzie System, is 2,800 miles long and is navigable for 1,000 miles.

**SPORT.** The prong-horned antelope is plentiful on the plains north of the Bow and South Saskatchewan Rivers, and between the longitude of Gleichen and the eastern boundary of the province, and is occasionally found outside of these limits. Black Tail and White Tail Deer are found in the wooded foothills and timbered sections throughout the province, and Red Deer in some of the



Threshing in Alberta. See Lacombe District, page 53, and announcement "Lacombe District--  
The Alberta Provincial Land Agencies, Ltd.," page 61.

wooded valleys of the plains. Elk are found in the timbered country along the western boundary and in the north. Moose and Cariboo are plentiful in the northern part of the province. Mountain Goat and Sheep may be found in the higher altitudes of the mountains on the west. Black, Cinnamon and Grizzly Bear are to be found on the mountains on the west and throughout the north of the province. Fur-bearing animals, such as Mink, Martin, Fisher, Otter, Muskrat, Beaver, Lynx, Timber-wolf, Coyote, Badger and the various Foxes, can be found in the province. Ruffed Grouse are plentiful in all the wooded parts of the province. Hungarian Partridge have been established in the vicinity of Calgary by the local Fish and Game Association, and are doing well, also a few pairs of Pheasants. Prairie Chicken, or Pinnated Grouse, can be found all over the prairie section of the province where there is any hush or small woods in the vicinity. Ptarmigan are occasionally seen in the higher altitudes of the mountains. Snipe and Plover are common in all prairie sections. All Canadian varieties of Duck and Geese are plentiful. Swans are occasionally seen. Fish—Rainbow Trout, Cut-throat Trout, Char and Grayling—are plentiful in the clear mountain streams and lakes in the west; Pike, Pickerel and Golueyes in rivers of the plains, and Whitefish in the lakes of the north.

**TELEPHONES.** The province owns and operates at cost 3,500 miles of long distance line and about 2,500 of rural or farmers' lines. One-fifth of the subscribers are farmers.

**TEMPERATURE AND RAINFALL.** The table compiled for Heaton's Annual, 1913 Edition, by the Meteorological Office at Toronto, gives the mean annual temperature and average annual rainfall in inches at different points in Alberta, as follows:

	Temperature	Rainfall
Banff.....	34.4	13
Calgary.....	35.2	19
Edmonton.....	36.7	17
Macleod.....	40.9	12
Medicine Hat.....	49.6	13
Pincher Creek.....	39.9	19
Red Deer.....	37.1	22

**TIMBER.** Except in the s.e. and the extreme n., timber is plentiful, though small. The eastern slopes of the Rockies are well timbered, and the streams are thickly fringed with spruce, pine, poplar and willow. Central Alberta, the Park Country, is partially wooded, aspen



being the most common. White spruce predominates between the Rockies and the prairie; aspen and balsam p. of the Saskatchewan, Athabasca and Peace Rivers. In the north, poplars grow 1 ft. in diameter, and straight for 18 ft. In the Mackenzie basin, white and black spruce, tamarack (larch), jack pine, birch and white poplar are found.

**TRANSPORTATION.** Three transcontinental lines of C.P.R., C.N.R. and G.T.P. traverse the province from east to west. There are numerous branch lines in operation and others in construction. The appropriation for the Hudson Bay Ry. has been voted by the Federal Government.

**WAGES—AGRICULTURAL LABORERS.** By the year, with board, \$18 to \$30 per month; averaging, say, \$25 for good men; for 8 months, \$25 to \$40; for harvesting and threshing, \$35 to \$50 per month.

**WAGES—MINERS, COAL.** On contract work average coal diggers earn from \$60 to \$180 per month. For day labor, 8 hrs., wages vary according to the employment from \$3.50 to \$2.50 for inside men, and \$3.50 to \$2.25 for outside men. Boys from \$1.25 to \$1.50. Write Inspector of Mines, Edmonton, Alta., or to mine managers.

## Agriculture

**ALFALFA.** The cultivation of alfalfa is attracting much interest in Alberta. With the restriction of ranges by the inrush of wheat growers the rancher must provide pasturage for his herd, and alfalfa restores fertility to the farm that is exhausted by wheat growing. Many ranchers in Alberta are sowing this crop on an extensive scale, as it is equally good for all live stock, including poultry. It is particularly adapted for cultivation under irrigation. At the Experimental Farms at Lethbridge and Lacombe an average of 3 tons of cured hay per acre has been obtained from non-irrigated lands in one crop, and 2 or 3 crops can be obtained in a year. From these stations alfalfa seed has been distributed. Alfalfa has been successfully grown at points in Quebec, Ontario, Manitoba, Saskatchewan, Alberta and British Columbia. The plant does best on a light sandy loam in good heart over a deep, loose, alluvial subsoil. There appears to be no climatic reason why alfalfa should not be grown generally with great success in Alberta. A report of the U.S. Dept. of

Agriculture states that the plant is found in Verkloyansk, Siberia, in lat. 68 degrees n., where the subsoil remains permanently frozen. See Bulletin issued by the Railway Lands Branch, Dept. of the Interior, Ottawa.

**BARLEY.** Two varieties are grown. Two-rowed barley raised in Southern Alberta is fully equal to the Gallatin Valley barley of Montana, exported to Germany. British maltsters have made a standing offer to pay 10 to 15 cents per bushel premium on all two-rowed barley from Southern Alberta, especially if raised under irrigation. Six-rowed barley used for feeding purposes is still the principal crop in Central Alberta. An absolutely sure crop favored in mixed farming districts, yielding as high as 58 lbs. per bush., and from 40 to 50 bush. per acre. 31 bush. per acre is an average crop for the whole province.

**BEEKEEPING.** The keeping of bees is not yet general, but the large and continuous amount of natural bloom throughout the season affords abundant food for bees. Wherever tried they have done well.

**BREAKING LAND.** Cost varies from \$3 to \$5. The clearing of brush and trees adds to the cost in the Park Country.

**CATTLE.** The Alberta ranges were famous. Cattle usually spend the winter out in S. Alberta and Peace River country; with increasing settlement in S. Alberta the settlers are driving the industry farther north, where they are kept in smaller herds, and given better care than was possible under the old ranching methods. There are now only about 12,000 acres of range. The Western Stock Growers' Association, representing the Range Cattle Breeders' Association, have headquarters at Macleod. The Alberta Cattle Breeders' Association hold an annual bull sale and fat stock show. The breeds best represented are the Shorthorn and Hereford. There are a few Polled Angus and Galloways. An average weight of 4-year-old range steers, raised entirely in the open, without grain and only occasional hay, is 1,500 to 1,700 lbs. Dairying is on the ascendancy and Holsteins, Ayrshires and Jerseys are being introduced. Abattoirs at Calgary and Edmonton. Surplus cattle exported to British Columbia, Yukon, Winnipeg and Great Britain. In 1910, Alberta exported 184,269 head of cattle.

**DAIRYING.** Numerous springs, rivers and lakes, together with luxuriant native grasses, make dairying very profitable. There are 34 private creameries and 11 cheese fac-



A Business Street in Lethbridge. Read announcement on page 63, headed "Lethbridge District—  
Asquith & Lindsey."

tories, also 20 co-operative creameries managed by the Government, which manufactures their products at a large dairy station at Calgary. In 1910 the butter output of the 60 creameries was 2,315,000 pounds; selling value, \$575,000. Output of cheese factories about 220,000 pounds, valued at \$27,500. Total value of factory butter and cheese productions for the year, \$602,500. A large quantity of dairy butter was also made and sold, which brought the figures well up towards the \$1,000,000 mark.

**DAIRYING—CHAMPION DAIRY COW.** Rosalind of Old Basing, the champion dairy cow of the British Empire, was bred and raised by C. A. Julian Sharman, of Red Deer, a Central Alberta dairy district of great possibilities, see page 56. Rosalind's performance under an official test was: Highest milk yield in 1 day, 52 lbs.; highest milk yield in 1 year, 15,700 lbs.; milk yield in 3 years, 37,847½ lbs.; average butter fat test, 5.16%; butter production in 1 year, 1,031.89 lbs.; butter production in 3 years, 2,504.39 lbs.; actual money value of products in 3 years, \$1,007.50; and 3 calves for which \$2,000 was refused. On 16th October, 1912, the Red Deer Bd. Trade entertained 100 representative men of the province at a dinner in honor of this cow. See illustration on page 54.

**DRY FARMING** is a system of soil tillage whereby the rain is stored and conserved for the use of crops. It includes: (a) deep ploughing to increase the absorptive capacity of the soil, (b) frequent cultivation of the surface soil during the summer to check evaporation, (c) the selection of drouth-resisting crops. The wide application of these principles makes practicable the occupation by farmers of areas hitherto thought to be suitable only for ranching. The 7th International Dry-Farming Congress was held at Lethbridge, Alta., in October, 1912. Total registered delegates 2,594.

**FARMING—COST OF IMPROVING LAND.** The following is an estimate of the cost of farm development, where it is done by contract work: Breaking, 3 inches deep, per acre, \$3 to \$5; harrowing, each operation, per acre, 35c.; discing 3 times, per acre, \$1.50; seeding, not including seed, per acre, 60c.; seed, per bushel, market price; fencing, per mile, 3 wires, \$100 to \$125; hauling grain from nearest station to land, per mile, per bush., ¾c.; treating grain with bluestone or formalin, per bush. (but not less than \$2), 3c.; boring wells, using steel cas-

ings, per ft., \$2.25 to \$3; boring wells using galvanized casings, per ft., \$2 to \$2.75; cost of good work horse, \$150 to \$200; cost of milch cow, \$35; cost of sow for breeding, \$10. Coal varies with locality from 50c. per ton at mine to \$6 per ton delivered at shipping point. A 6-roomed house, \$700; a stable to accommodate 6 horses, \$200; a cow shed to accommodate 8 head, \$400; implement shed, \$100; granary for 2,000 bush., \$100.

**FARMING—COST OF STARTING.** The following statement of the amount required to make a start has been approved by well-informed implement men, practical farmers and large farm land companies: 1 team horses, \$250 to \$400, according to weight; 1 set of harness, \$35 to \$40; 1 wagon, \$80 to \$90; 1 sleigh, \$35; 1 plow, \$28; 1 set harrows, \$20; 1 set disk harrows, \$35; 1 seeder, \$85; 1 mower and rake, \$95; 1 reaper and binder, \$170; other implements, \$50 to \$75; total, \$833 to \$1,073. Prices vary in different parts of the country. The settler might start with four cows, \$160; 4 pigs, \$15; 4 good sheep, \$20; poultry, \$10; total, \$250. Add to this household necessities.

**FARMING—RENTING ON HALF SHARES.** A farm is sometimes acquired at an agreed price on the following terms: The owner purchases the seed, pays half the threshing, and half the twine. The purchaser does all the work and statute labor, and delivers to the nearest elevator half his crop until the farm is paid for.

**FLAX.** At present grown for the seed only, which is purchased by oil mills at Winnipeg and Chicago. In 1912 about 111,400 acres under flax gave a yield of 1,381,000 bushels; average per acre 12.40. The fibre is too short and of too poor a quality to be worked with profit by the old process. A process has been invented for treating Western flax, and it is claimed that demonstrations show that linens of good quality can be made therefrom. Flax is recognized as one of the best crops for sowing on new ground. Write to the Director, the Experimental Farm, Ottawa, for pamphlet on Flax.

**FODDER—WILD GRASSES.** Of true grasses, 96 varieties have been identified, of which 46 make excellent hay. They grow on the uplands mixed with wild pea vine and vetches. Little hay is cultivated. The farmers depend almost entirely upon the wild grasses. The sedges grown in the lowlands and the marshes are early sought after by stock when the upland passes harden. A fine variety of

blue grass is found in many districts. In the south the "buffalo grass" and the "bunch grass" cures on the ground in winter. In the north the grasses are taller and do not cure.

**FODDER CROPS—CLOVER.** The little white clover grows profusely everywhere. Alsike and red varieties have succeeded wherever cultivated. See Alfalfa, page 12.

**FODDER CROPS—TIMOTHY.** Does well. The towns and railway camps furnish a good market at from \$18 to \$20 per ton.

**FRUIT GROWING.** Small fruits do well in all districts. Crahapples, apples, and piums are grown south of Edmonton. The Provincial Government has 10 small fruit experimental stations.

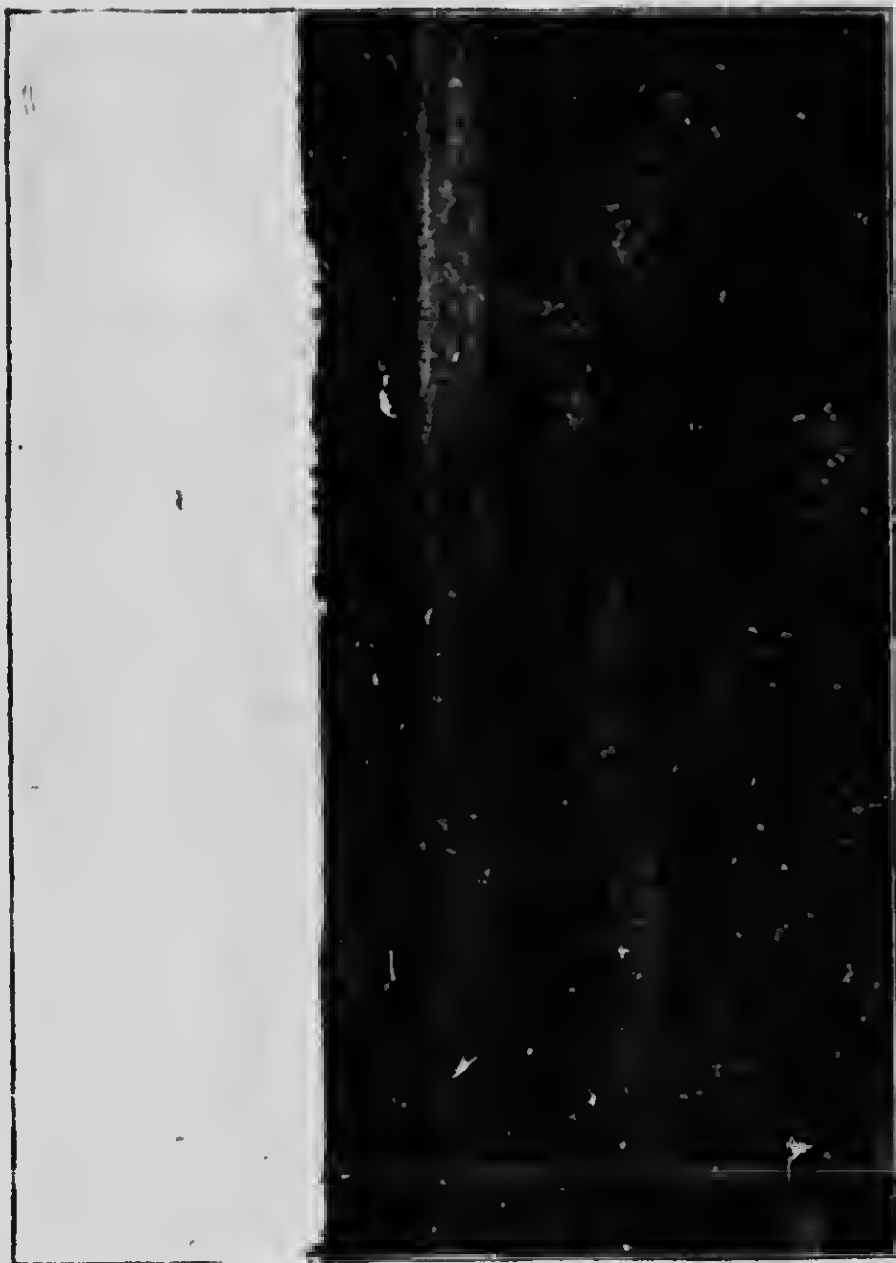
**GRAIN CROPS, 1912.** The December estimate of the yield of the 4 principal grain crops of Alberta, prepared by the Provincial Department of Agriculture, is as follows:

	Acres Sown	Busheis per acre	Yield
Wheat.....	2,982,200	21.02	20,648,100
Oats.....	1,196,000	30.00	35,880,000
Barley.....	262,200	26.53	6,958,060
Flax.....	96,050	6.00	576,300

These figures compare with the total yields in 1911 of the 4 grains of: Wheat, 22,000,000 bush.; oats, 30,000,000 bush.; barley, 4,500,000 bush.; flax, 330,000 bush. The yield per acre in 1911 was: Wheat, 21.07 bush.; oats, 30.00 bush.; barley, 27.3 bush.; flax, 6.00 bush.

**HORSES.** Alberta horses are noted for endurance, lung power and freedom of action. This is due to high altitude, dry atmosphere, short winters, nutritious grasses and plentiful supply of clear, cold water. Breeders are introducing pure-bred sires, Clydesdales, Percherons, Sbires, Suffolks, Thoroughbreds, Hackneys and Standard breeds. An excellent spring horse show is held at Calgary. The shipments of horses out of the province dropped from 27,887 in 1910 to 16,000 in 1911. This is due to the sale of females following the demand created by the Yukon rush, the Boer war, railway construction and municipal improvements. Horses are now being imported from the States of Montana, Idaho and Washington. Farmers of limited means are using oxen. A good team of 1,300 lbs. finds a ready sale at \$600; heavier horses a higher price.

**OATS.** The central portion of the province is renowned for its superior quality of oats. In the Edmonton dis-



This Field, near Lacombe, Alta., furnished the Sheaf of Oats which won the World's Prize at the International Dry-Farming Congress held at Lethbridge in 1912. Read announcement on page 61, headed "Lacombe District—Jesse Fraser Agency."

trict, 50 to 60 bushels to the acre is ordinary, and 125 bushels not uncommon. There is a large market in British Columbia and the Yukon. Shipments have been made to Oriental Countries and Great Britain. There are two large oatmeal mills in the province. For four years the first prize grain at the Provincial Seed Fair has weighed not less than 48 lbs. to the bushel. The average yield per acre is 36.42 by measure, by weight over 45 bushels.

**POULTRY.** The Province of Alberta offers exceptional opportunities for poultry raising on account of the bright sunshine and the healthy, invigorating atmosphere. With an unlimited market at all seasons of the year and prices ranging from 20c. to 60c. per dozen for eggs, and from 15c. to 25c. per pound for first-class dressed poultry, there is sufficient encouragement to the poultry-keeper. Owing to the rapidly increasing population and the interest taken in the industry, there will be for years to come an unsatisfied demand for eggs and birds for breeding purposes. Land and material for breeding purposes can be purchased at reasonable prices, and with the superior quality of grain that can be purchased cheaply, the conditions for successful poultry raising are as favorable as can be found anywhere. The Provincial Govt. has established a poultry-breeding station to distribute eggs and birds to farmers and poultry raisers.

**RANCHING.** There are 3 million acres under grazing leases in the West. The ranching country is chiefly in South Alberta and South-west Saskatchewan, where cattle and horses remain out all winter and live on grass. In 1881, the cattle trade of Canada amounted to 25 head. In 1911 Canada exported cattle worth \$8,547,586, and \$330,274 worth of sheep. See under Cattle, page 13; Horses, page 17, and Sheep, below.

**ROOTS AND VEGETABLES.** The rich vegetable loam, together with long hours of bright sunshine and the cool nights, make ideal conditions for large growth of roots and vegetables. The latter, in great variety, can be grown by everyone. Roots grow to perfection, yielding usually 1,000 bushels per acre. Potatoes weighing 1½ lbs. are not unusual.

**SHEEP.** In Central Alberta farmers' flocks are proving very profitable. Footrot and similar diseases occur very rarely. The local demand is partly supplied from Australia and Nova Scotia. Prices are good. The wool is largely sold to Ontario manufacturers. In Southern Alberta the areas formerly set apart for sheep leases are



being invaded by the homesteader, and large ranchers are turning their eyes to the foothills. The natural herbage of the prairie and river banks produces mutton of fine flavor. The foundation stock, chiefly Merino, come from Montana. Down and Long-wool sires have been introduced to increase the weight.

**SUGAR BEETS.** The Knight Sugar Co. commenced operations at Raymond in 1903. They own 200,000 acres, part of which is irrigated. The manager reports that in 1912 the company had about 2,500 acres in beets. The acreage cultivated by farmers was about 800 acres. The average crop is 10 tons per acre, and the average sugar contents 16 per cent. The farmer's net profit per acre is estimated at from \$20 to \$40. The refuse is sold as cattle feed. Write to Census and Statistics Office, Ottawa, for Bulletin IX, "The Beet Sugar Industry."

**SWINE.** Pork production is rapidly becoming an important industry in Alberta, particularly in that portion lying north of the main line of the C.P.R. Here the grains and grasses necessary in swine raising grow luxuriantly and produce pork of the highest quality. The number of hogs marketed in 1911 was approximately 120,000 head. There are two large packing plants now in operation, The J. Y. Griffin Co. at Edmonton, and P. Burns & Co. at Calgary. Besides her home market, the Peace River District and British Columbia depend largely upon Alberta for their pork and bacon supplies.

**WHEAT.** The ideal temperature for wheat is a mean summer temperature of 60 degrees. This extends as far as latitude 65 degrees. The greatest yield is nearest the northern limit of successful growth. Wheat from Fort Chippewegan at lat. 59 took first prize in Philadelphia in 1876. Wheat from the Peace River Valley took first prize in the World's Columbian Exhibition in 1893. Four and five grains are found to the cluster, as against two grains usual in the U.S. wheat fields. This is due to the winter frosts, summer rains and the soil, of which the chief ingredients are nitrogen, potash and phosphoric acid. At the International Dry-Farming Congress for 1912-1913, held at Lethbridge, Alta., in October, 1912, the prize for the best bushel of hard wheat in the world was awarded to Henry Holmes, a farmer at Raymond, Alta.

**WHEAT—PROFIT PER ACRE BY CONTRACT WORK.** The following estimate, which is regarded as fair, was published in the "Calgary Herald," Aug., 1910, showing cost and profit per acre on a crop of wheat on say 25

acres: Preparing land for seeding, \$2.25; drilling, 14c.; binder harvesting, 75c.; threshing and delivering 1 acre of 22.47 hush. at 8c., \$180. Entire cost of wheat crop per acre, delivered to the elevator, \$4.94. Add interest 8% on land, at \$15 per acre, \$1.20. Taxes, land, school, and road per acre about 16½c. Total cost per acre, \$6.31; profit (Alherta) crop average, 22.47 hus. per acre at 75c., \$16.85. Net profit per acre clear of all expenses, \$10.54. This estimate has been criticised as follows: Cost of preparing land is nearer \$4, but average yield among the best farmers would be nearer 30 hus.

**WHEAT—SPRING WHEAT.** The following is a comparison of official returns of the leading wheat states of the Union: Average yield per acre for 1896 to 1905, Dakota N., 12.2; Dakota S., 11.1; Iowa, 14.1; Kansas, 13.7; Minnesota, 13.3; Nebraska, 15.4; Washington, 17.6; Wisconsin, 15.7. Average yield in Alherta, 1901 to 1911, 19.35.

**WHEAT—WINTER WHEAT.** The crop matures earlier than spring wheat, eliminating all danger of frost. In 1900 the area seeded was 500 acres; in 1901, a little over 1,000 acres; in 1902, 3,500 acres; in 1903, 8,300 acres; in 1904, 32,000 acres; in 1905, 43,660 acres; in 1906, 84,000 acres; in 1907, 105,000 acres; in 1908, 86,627 acres; in 1909, 130,000 acres; in 1910, 200,000 acres. Average yield per acre: 1902, 24 bushels; 1903, 23½ bushels; 1904, 28½ bushels; 1905, 32½ bushels; 1906, 20 bushels; 1907, 21½ bushels; 1908, 29½ bushels; 1909, 24 bushels; in 1910, 21.46 bushels; 1911, 25.28 bushels; 1912, 24.09 bushels. It is the leading crop in S. Alherta. "Alherta Red," grown originally from Turkey Red Wheat introduced from Kansas, is a regular prize-winner at leading exhibitions, has been grown successfully at Edmonton and Ft. Vermilion, has never failed in the South when the land was properly prepared. The best results are obtained by sowing early in August on summer-fallow land. It passes through the winter without damage and is ready for reaping from 1st to 15th August. It is considered a very safe crop. See under Grain Crops.

## Mining

**BUILDING STONE.** Calgary has a quarry of excellent stone. Enormous beds of good stone extend along banks of the Saskatchewan River.

**CLAYS.** Clay ironstone is found along the Red Deer River west of Hand Hills, but nothing has been done to



Sport with Comfort. A Motor Load of Ducks shot in the Macleod District. Read announcement on page 63, under heading "Macleod District—The R. H. Hilliard Agency."

develop it. Brick and pottery and stoneware clays are abundant in the shales of the Pierre and Edmonton series. Brick clays are being utilized chiefly at Calgary, Edmonton, Lethbridge, Medicine Hat, Sandstone, Red Deer, etc. The production in 1911 was 144,878,000 brick, valued at \$1,316,946.

**COAL.** Alberta is singularly rich in coals. Over a great part of the province lignite occurs. In the southwestern portion lignitic coals or low carbon bituminous are mined; in the Rockies, bituminous coals in great quantity are found in numerous basins, extending from the International Boundary to beyond the Yellowhead Pass, which is as far as exploration for coal has extended. At certain places, as at Anthracite and Bankhead, anthracite coal is found. Lignites are mined at Morinville and Edmonton, and at numerous other points for local use. Cost at pit's mouth 35c. to \$2.50 per ton. The low carbon bituminous coals are mined chiefly at Lethbridge, Taher, Burmis, Lundbreck. Cost at pit's mouth \$1.50 to \$3.00 per ton. The principal collieries of the bituminous coals are at Coleman, Frank, Lille, Byron Creek, Hillcrest, Bellevue, Passburg and Canmore. Price at pit's mouth \$1.50 to \$3.00 per ton. Coke produced at Lille and Blairmore is used by B. Columbia smelters and marketed in the United States. Anthracite is mined at Bankhead. The fines are briquetted and sold for domestic fuel. Over 120 collieries were operated in 1911, and about 3 million tons of coal produced. Important areas of coal have recently been found in the foothills south of the Grand Trunk Pacific Ry. on the head waters of the Emharras and Pemhina Rivers. Higher grade coals have been found in areas described as the Brazeau Range area on the Saskatchewan, the Big Horn Basin from the Saskatchewan to the Brazeau Rivers, and the southern part of the Nikanassin basin drained by the Macleod and north branch of the Brazeau rivers. Write to Geological Survey, Ottawa, for free pamphlet, "Coal Fields of Manitoba, Saskatchewan, Alberta and British Columbia," and reports of D. B. Dowling.

**GALENA.** Veins have been located pronounced to contain large percentage of silver.

**GOLD.** Gold in paying quantities has been found on the banks and bars of N. and S. Saskatchewan, and in the Pemhina, Smoky, Macleod and Athabasca rivers. As much as \$50,000 per annum was at one time recovered from the Saskatchewan river near Edmonton, but the

annual production is now only a few hundred dollars, recovered chiefly as a by-product in the dredging of sand and gravel for other purposes. A rich discovery is reported at Yellowhead Pass on the G.T.P.

**GYPSUM** is found on the Peace River.

**LIMESTONE FOR CEMENT.** Extensive beds are found in different sections. Blg cement plants at Exshaw and Calgary.

**NATURAL GAS.** Natural gas is widespread. It is utilized along the C.P.R. in the vicinity of Medicine Hat. A well flowing 8,000,000 feet a day has been drilled at Bow Island. A very heavy producer was drilled at Pelican Rapids on the Athabasca River, Northern Alberta.

**PETROLEUM.** Occurrences in district tributary to Pincher Creek. The tar sands and seepages indicate its presence in Northern Alberta.

**PLATINUM.** Found in the river sands.

**SALT.** Salt in the form of brine springs occurs in Northern Alberta, near the Mackenzie River.

**SILVER.** See Galena.

**TAR SANDS.** In the valley of the Athabasca, above Athabasca Lake, is an immense outcrop of tar sands, estimated to have a minimum distribution of 1,000 square miles. In thickness they vary from 150 to 225 feet. Analysis of a specimen gave bitumen, 12.42; water (mechanically mixed), 5.85; siliceous sands, 81.73. Above Boiler Rapid the tar sands are overlaid by shales sufficient to prevent the oil from rising, and the existence of several natural gas springs afford indications of the existence of oil. See Ann. Report Geological Survey of Canada, 1890.

### ANNOUNCEMENTS

**NOTE.**—The Alberta Government assumes no responsibility in connection with these Announcements.

**OIL LANDS—ALVO VON ALVENSLEBEN, LTD.** We own or control large interests in Alberta oil lands, particularly in the Edmonton and Morinville districts. We shall be pleased to furnish reliable information upon these districts, and also upon the results of borings in other portions of the province. We are largely connected with the American-Canadian Oil Co., Ltd., at Morinville, and are financing many similar undertakings in other prominent oil centres. Alvo von Alvensleben, Ltd., Vancouver, B.C.

# Boards of Trade Register

## When Writing to a Local Reference, Mention Should be Made of Heaton's Annual

*This Register is revised every year and includes certified official returns from local Boards of Trade and the municipal authorities of towns where no Board of Trade is established. Information is given generally as received. The Editors reserve the right to use information obtained from other reliable resources and to edit the returns made, but they cannot, for obvious reasons, from their own knowledge, vouch for the absolute accuracy of every detail in each case. As a general rule, entries in this Register are confined to towns over 400 population in the West. Exceptions are made in special cases. Where possible, a reliable local reference is given, who will supply further information upon request.*

**ABBREVIATIONS.**—Tel., Telegraph; Ex., Express; m., miles; Pop., population according to Returns of Census, 1911; Pop.\*, estimate of Mayor or local Board of Trade; Alt., Altitude—ft. above the sea level. Altitudes are given as furnished by the Dominion Meteorological Office at Toronto.

**POPULATION STATISTICS.**—The rapid settlement of Western Canada makes it extremely difficult to give accurate population statistics. As a rule, the last Dominion Census figures are given. If these are misleading, wherever possible the figures are taken from local estimates, based on Assessment Returns or a Special Civic Census.

Chief Town of Judicial District marked ¶

Towns represented among Illustrated Advertisements in Booklet marked †.

**ALIX**, on Diamond Lake, on C.P.R., G.T.P., C.N.R., 50 m. n. of Calgary. Dom. Ex. Hotels, Grand, Imperial, 3 churches, public school. Neighborhood supplies coal, gypsum, clay, poplar. A mixed farming district. Pop.\*350.

**SPECIAL OPPORTUNITIES.**—Pressed brick, coarse graded pottery. Samples of clay forwarded on request. Write Sec. Bd. Trade.

**ATHABASCA LANDING**, head of navigation on Athabasca River, 100 miles n. of Edmonton, on C.N.R. Tel. 3 churches, 2 public schools, theatre, lumber yards, 2 saw mills, boat building. 3 banks. Nat. gas. Pop. \*900. Write Sec. Bd. Trade.



For description of these Warm, Rich, Prairie Lands, read paragraph headed "Calgary District—  
F. C. Lowes & Co.," page 60, and see pages 30 and 52.

**BANFF**, on C.P.R., 81 miles w. of Calgary, in heart of Canadian Rockies. Dom. Ex. Tel. C.P.R. Hotels, Banff Springs (summer) \$4 up, Sanitarium \$2.50 up, Mt. Royal \$2.50 up, Alberta \$2 up, King Edward \$2. 4 churches, public schools, 2 theatres. Electric light plant, telephone, lumber yard, lthla water, bottling works, 4 livery stables, 1 bank, fishing, boating, station for Rocky Mountain Park (over 10,000 sq. miles). An ideal summer and winter resort. Write N. K. Luxton, Banff. Alt. 4,521. Pop. \*800.

**BANKHEAD**, 80 miles from Calgary, on C.P.R. Dom. Ex. Tel. C.P.R. Hotel, Cascade \$2.50. R.C. church, electric light plant. Coal mines employ about 540 men. Deposits of copper are being mined on small scale. Pop \*900.

**SPECIAL OPPORTUNITIES**.—Store, meat market, laundry, livery. Write Agent C.P.R.

**BASSANO**, on Bow River and C.P.R. main line, 82 miles east of Calgary. Dom. Ex. Hotels, Berkeley, Hunter, Alberta. 2 churches (Ang., Pres.), \$22,000 school, brick works, flooring co., wholesale jewellers. The \$7,000,000 C.P.R. irrigation dam here will serve an area of 3 million acres. Pop. 1,200.

**SPECIAL OPPORTUNITIES**.—Sash and door factory, iron works, furniture, flax mills, flour and oatmeal mills, sugar beet factory, small farmers. Town offers free sites with water and power at cost. Write Sec. Bd. Trade.

**BAWLIF**, on C.P.R., 82 miles s.e. of Edmonton. Dom. Ex. Tel. C.P.R. Hotel, Union. 2 churches, public school, bank, creamery, coal mines. A mixed farming country. Fishing and shooting. Pop. \*325.

**SPECIAL OPPORTUNITIES**.—Flour mill, brick yard, coal mining. Write Sec. Bd. Trade.

**BLAIRMORE**, on Crow's Nest River and C.P.R., 13 miles e. of Crow's Nest Pass. Dom. Ex. Tel. C.P.R. Hotels, Blairmore \$1.50, and 2 others. Waterworks, public school, 3 churches, telephone, lumber yard, livery stable, coal mines, saw mills, cement co., 1 brick co., 1 lime co., brewery, macaroni factory, 2 banks, newspaper, distributing point of Crow's Nest Pass coal fields. Alt. 4,226. Pop. 1,166.

**SPECIAL OPPORTUNITIES**.—Foundry, machine shops, sash and door factory, wholesale houses, steam laundry. Write Sec. Bd. Trade.

†**CALGARY**, on C.P.R. main line, 860 miles w. of Winnipeg. C.P.R. branches to Edmonton, Macleod, Lethbridge



and Crow's Nest Pass; C.N.R. to Vegreville and Edmonton; G.T.P. to Tofield and Edmonton. Dom. Ex., Can. Ex., C.N.R. Ex. Tel. C.P.R. Hotels, a \$1,500,000 C.P.R. hotel under construction, Braemar Lodge, Alberta, Alexandria, King George, Grand Union, Imperial, Yale, King Edward, \$2 up. 23 banks, 40 churches, schools: 18 public, 1 normal, 2 high, 2 separate, 1 convent, 3 colleges, university under construction. Industries include biscuits, boxes, breakfast foods, bricks, beds, building materials, confectionery, cigars, cement, cement blocks, ground coffee and spice, electric light and power, flour, gas, harness, iron and metal works, lumber, leather goods, mattresses, macaroni, meat products, rolled oats, soap, show cases, saddlery, tents, wagons, aerated waters, beer, etc. In all 50 industrial plants, 150 wholesale firms; 1,000 commercial travellers have headquarters here. Trading centre of immense agricultural and stock-raising district. Chief supply station of mining district in the Rockies and B.C. A milling centre. Home of large, pure-bred cattle auction sale (250 to 500 pure-bred bulls sold annually). Station of Northwest Mounted Police. Divisional point of C.P.R., with annual payroll of \$1,500,000. In the neighborhood are extensive coal beds (lignite and anthracite), lime, brick clay and building stone. The Calgary Power & Transmission Co. have developed 10,000 h.p. on the Bow River, west of the city. Natural gas has been discovered at a depth of 2,960 ft., with flow over 500,000 cuh. ft. per day, price 25c. per M cub. ft. for lighting, and 15c. for power. The latter averages from \$12 to \$14 per h.p. per annum. Founded 1882, incorporated a city 1894. City has electric street railway, 60 miles in length; gravity water system, 14 miles from city; complete sewerage system. Alt. 3,410. Pop. 4,907 in 1901; 61,340 (civic census) in 1912.

NOTE.—\$3,000,000 C.P.R. car shops, employing 5,000 men, to be completed by 1913.

SPECIAL OPPORTUNITIES.—Wholesale in hooks, stationery, millinery, novelties, machinery, tailors' findings. Manufactures: Beet sugar, hoots and shoes, hags, binder twine, brushes and brooms, condensed milk, furniture, farm machinery, gelatine products, linens, paints and oils, ready-made clothing, shirts and overalls, starch products, stoves and furnaces, straw paper, tar and building paper, tanned leathers, woodenware and woollens. The city offers to new industries exemption from taxes for term of years when 25 or more hands are employed. Power, light and heat supplied by city, \$30 per h.p. Industrial

sites sold by city at cost. Natural gas supplied at 15c. per M ft. to manufacturers. See under "Agric. and Fruit Districts" and illus. Advt. Write Publicity Commissioner.

**CAMROSE**, on C.P.R., C.N.R., G.T.P., 25 miles e. of Wetaskiwin. Dom. Ex., C.N.R. Ex., Can. Ex. Tel. C.P.R., C.N.R. Hotels, Windsor, Arlington, Heather Brae. 7 churches, brick public school, 3 banks, public and private hospitals, sash and door factory, 3 elevators (120,000 bushels), and 2 grain warehouses, creamery, cement block plant, telephone, steam laundry, brick yard, 2 lumber yards, 3 livery stables, tannery, electric light plant, waterworks and sewers, 8 wholesale houses, 2 coal mines in town limits. Round Hill Collieries 16 miles north. Centre of well-settled mixed farming district. Scandinavian college for Alberta is established here. Hunting and fishing at neighboring lakes. Alt. 1,950. Pop. 1,596.

NOTE.—C.N.R. line s.e. to Coronation, and \$150,000 Provincial Normal School, will be completed in 1913.

**SPECIAL OPPORTUNITIES**.—Flour and cereal mills, boot and shoe factory, trunk factory, foundry, milk condensing plant, flax mill, twine factory, box factory, brewery. Factory locations on Bd. of Trade industrial spur, at \$10 per ft. frontage. Elec. power at 18c. per k.w. hour, less 10%. Write Sec. Bd. Trade.

**CANMORE**, on Bow River and C.P.R., 67 miles from Calgary. Dom. Ex. Tel. C.P.R. Hotels, Canmore. Oskaloosa. 3 churches, 1 school, 1 hospital. Canmore Coal Co. produce steam coal. Good fishing. Pop. \*800.

**SPECIAL OPPORTUNITIES**.—Barber, baker. Write Postmaster, Canmore.

**CARDSTON**, on St. Mary's River and C.P.R., 65 miles s.w. of Lethbridge, 37 miles s. of Macleod. Hotels, Caboon \$2, Spencer House. Court house, park. 43 churches, 3 grain elevators, flour mill, electric light, gravity system waterworks, quarry of fine grey stone, creamery. Fine mountain scenery. fishing and big game hunting. Pop. \*400.

**SPECIAL OPPORTUNITIES**.—Flour mill, steam laundry clay products, brick making. Write Sec. Bd. Trade.

**CARMANGAY**, on C.P.R. 36 miles n. of Lethbridge. Hotels. Grange, Victoria. 2 churches, school, etc. Pop. \*475.

**CARSTAIRS**, on C.P.R., 40 miles n. of Calgary. Dom. Ex. Tel. C.P.R. Hotels, Criterion \$2, Royal \$1.50. 3 churches, brick school, telephone, creamery, broom factory, 2 lumber yards, 2 livery stables, 2 banks, 5 stores, bakery, 5 elevators, rural telephone (Govt. and private). The Knee Hill coal mine 40 miles e., Little Red Deer mine



A typical Alberta farm. For description read paragraph on page 61, under heading  
"Edmonton District—F. C. Lowes & Co."

28 miles w. Good fishing and bunting. Good clay for fine pottery. Alt. 3,464. Pop. \*400.

**SPECIAL OPPORTUNITIES.**—Flour mill, pottery, lighting plant, brick plant, steam laundry, dressmaker, photographer, garage. Write Sec. Bd. Trade.

**CLARESHOLM**, on C.P.R., 82 miles from Calgary. Dom. Ex. Tel. C.P.R. Hotels, Wilton, Queen's. 4 elevators, electric light plant, telephone, 3 lumber yards, newspaper, water system, 3 banks, 1 school, 5 churches. Alt. 3,380. Pop. 809.

**SPECIAL OPPORTUNITIES.**—Flour mill, foundry, brick plant. Write Sec. Bd. Trade.

**COCHRANE**, on Bow River, on C.P.R., 22 miles w. of Calgary. Dom. Ex. Hotels, Cochrane, Alberta. 3 churches (Pres., Ang., R.C.), school, bank. Creamery. Brick plant. 200 h.p. supplied from Calgary. Fine scenery. Good fishing and shooting. Coal found in neighborhood. Pop. 475.

**NOTE.**—C.N.R. Strathcona to Pincher Creek to be built in 1913.

**SPECIAL OPPORTUNITIES.**—Flour mill. Write Mgr. Union Bank.

**COLEMAN**, on Old Man River, on C.P.R., 10 miles from Crow's Nest Pass. Dom. Ex. Tel. C.P.R. Hotels, Coleman and Grand Union. 3 churches, 1 public school, 1 bank, electric light and water system, newspaper. The International Coal and Coke Co., Ltd., employ about 700 men; McGillivray Creek Coal and Coke Co., Ltd., about 150 men. Good fishing and shooting. Alt. 4,237. Pop. \*2,400.

**SPECIAL OPPORTUNITIES.**—Brick making, poultry, dentist, lawyer, steam laundry, industries using pulpwood. Write Sec. Bd. Trade.

**CORONATION**. Track laid 27th Sept., 1911; auction sale of townsites on same day. Div. point on C.P.R. line from Moose Jaw to Lacombe. Telephone, hotel, 2 churches (Ang., Meth.) and Pres. services. Over 70 business places, 2 banks, a fine railway station, moving picture theatre, skating and curling rink, over \$5,000 spent on sidewalks, good water and lignite coal close by. Assessment in 1912, \$500,000. Pop., Dec., 1912, 1,045.

**NOTE.**—Contract has been let for \$45,000 school. C.P.R. line, Swift Current to Camrose and Sedgewick, will be completed in 1913. C.N.R. through here expected to be begun in 1913, making Coronation an important

# CENTRAL ALBERTA

Differs in many important respects from other districts and presents features peculiarly attractive to the investor for better and cheaper land.



Parties wishing for information in regard to this rich district and its agricultural opportunities should contact the

## Central Alberta Development League

mentioning HEATON'S ANNUAL. The League has reliable information. See pages 51, 52.

# ALBERTA CANADA'S RICHEST MIXED FARMING COUNTRY

From other portions of the Canadian West, and  
to the good farmer from older countries looking



ard to the resources and general characteristics of  
opportunities are invited to write the Secretary,

ment League, Edmonton, Canada,

gue has nothing to sell; its purpose is to provide

distributing centre for Central Alberta. Contracts have been let for electric lighting plant and waterworks. Write Town Commissioner, Coronation, Alta.

**CROSSFIELD**, on C.P.R. Calgary-Edmonton line, 30 m. n. of Calgary. Dom. Ex. Tel. C.P.R. Hotel, Alberta. 3 churches, bank, 3 elevators (68,000 bush.), stock yard, 2 lumber yards, 3 general stores, blacksmith, 2 doctors, transfer co. A fine mixed farming country. Considerable tributary pop. Pop. \*307.

**SPECIAL OPPORTUNITIES**.—Brick and cement plant. Write Sec. Bd. Trade.

**DAYSLAND**, on C.P.R. Wetaskiwin branch, 90 miles from Edmonton. Dom. Ex. Tel. C.P.R. Hotels, Angus \$2, Alberta \$1.50. 3 churches, 1 public school, elevator (145,000 bushels), telephone 2 lumber yards, newspaper, 2 livery stables, creamery. Pop. 349.

**SPECIAL OPPORTUNITIES**.—Flour mill, dentist, milliner. Write Sec. Bd. of Trade.

**DIAMOND CITY**, on Diamond Coal Co. Ry., connecting with C.P.R., 12 miles from Lettbridge. Telephone. Hotel, Diamond \$2.50. 2 elevators, brick school, 2 churches, bank, 4 general stores. Elec. light, waterworks brick plant. In heart of coal district. Pop. \*600.

**SPECIAL OPPORTUNITIES**.—Flour mill, general store. Write Sec. Bd. Trade.

**DIDSBURY**, on C.P.R., 47 miles n. of Calgary. Dom. Ex. Tel. C.P.R. Hotels, Alexander, Golden West. 6 churches, high and public schools, 4 elevators (175,000 bushels), flour mill, creamery, telephone, electric light plant, 3 lumber yards, 3 livery stables, planing mill, newspaper, steel culvert company, brush cutter factory, 2 banks, 40 stores. First-class farming country. Alt. 3,300. Pop. 726.

**SPECIAL OPPORTUNITIES**.—Brick plant, pork packing. Write Sec. Bd. Trade, or Mgr. Union Bank.

†**EDMONTON**, capital of Alberta, on Saskatchewan River, 793 miles w. of Winnipeg, 946 miles e. of Prince Rupert. 3 transcontinental lines, C.P.R., C.N.R. and G.T.P., with 5 branches. Others under construction. Dom. Ex., C.N.R. Ex., Can. Ex. Tel. C.P.R., C.N.R., G.T.P. and Govt. Hotels, King Edward \$3 np. Alberta \$2.50 to \$3.50, Royal George, Cecil, Yale \$2.50 up, St. James \$2 up. Windsor, Great Northern \$1.50, and 20 others. Parliament Buildings. 40 churches, R.C. convent and seminary. University of Alberta. A fine high school and 22 public

schools; Alberta College, Robertson College, 2 business colleges. Municipal elec. light and power, water, telephones and st. ry. carrying 1,000,000 passengers monthly. 23 banks. Industries include. Meat packing plant (400 hands employed), brick yards, saw mills, flour mills, elevators, woodworking, cigars, aerated water, shoes, clothing, bottling, brewing, foundries, box and casket works, etc. 50 wholesale houses. Centre of rich agric. country. Timber and stone within easy reach. Nat. gas and indications of oil in tributary territory. 30 coal mines in or near city. Alt. 2,153. Pop. in 1901, 2,652; in 1912, since the absorption of Strathcona, 53,383.

NOTE.—\$1,000,000 G.T.P. hotel to be finished in 1913. Also another large packing plant.

SPECIAL OPPORTUNITIES.—Coal development, clay products, oatmeal and cereal mills, soap factories, cement works, pulp and paper mills, biscuit factory, hotels, boarding houses, apartment blocks. Industrial sites with railway connections can be obtained. City gives water, light and power at cost. Assessment on value of land only. Improvements not taxed. City owns large area for industrial sites. See under "Agriculture and Fruit Districts" and illus. Advt. Write Sec. Bd. Trade.

EDSON, on G.T.P., 130 miles w. of Edmonton, 200 miles n.w. of Calgary. Divisional point. Town limits extend to River McLeod. G.T.P. branch reaches Brazeau coal fields. A mixed farming country, with marl, timber and mineral resources. Pop. in Aug., 1910, 15; in March, 1912, 1,223. Write Sec. Bd. of Trade.

EXSHAW, on Bow River, on C.P.R. Dom. Ex. Tel. C.P.R. Hotel, Portland. Canada Cement Co. own large cement plant and town site. 1 livery stable, electric light and telephone. Pop. \*600

FORT SASKATCHEWAN, on north branch of Saskatchewan River, on C.N.R., 18 miles n.e. of Edmonton. C.N.R. Ex. Tel. C.N.R. Hotels, Mansions House, Queen's. 4 churches, court house, brick public school, town hall, fire hall, telephone local and long distance, 1 bank, saw mill, brick yard, 3 elevators, station of R.N.W.M.P. Pop. 785.

SPECIAL OPPORTUNITIES.—Lumber mills, cold storage plant, pipe and tile works, flour mill, woollen mill, foundry, shoe factory, sash and door factory. Cheap power offered. Write Sec. Bd. Trade.

FRANK, on C.P.R., 51 miles from Fernie. Dom. Ex. Tel. C.P.R. Hotels, Imperial \$2.00, New Sanitarium Hotel (\$80,000) with sulphur baths, and 4 others. 1 public





A View of Lethbridge, showing part of Galt Park on the left. See announcement, "Southern Alberta Farm Lands—Wilkie & Kerr," on page 63.

school, 2 churches (R.C. and Meth.), newspaper, 2 livery stables, telephone, electric light plant, water system. The Canadian Coal Consolidated Co. employ about 300 men. Pop. 806. Write Mgr. Union Bank, Frank.

**NOTE.**—Cement plant (cap. 1,000 bbls. per day) will be erected in 1913.

**GLEICHEN**, on C.P.R., 55 miles from Calgary. Hotels, Palace, Gleichen. 2 banks, 3 churches, creamery, bottling works, 3 elevators, 3 lumber yards, garage, newspaper, 3 livery stables. Waterworks, sewerage and fire protection Pop. 583.

**SPECIAL OPPORTUNITIES.**—Flour and feed mill. Write the Mayor.

**GRANUM**, on C.P.R., 93 miles from Calgary. Hotel, Alberta. Telephone, 5 elevators (175,000 bushels), 2 lumber yards, livery stable, newspaper, 4 churches, school. Pop. 250.

**SPECIAL OPPORTUNITIES.**—Flour mill, veterinary surgeon, dentist, creamery. Write Sec. Bd. Trade.

**GRASSEY LAKE**, near junction of Belly and Bow Rivers. On C.P.R., 55 miles e. of Lethbridge, 51 miles w. of Medicine Hat. Dom. Ex. Hotel, Grassey Lake. 3 churches (Ang., Pres., Mormon), public school, bank. Coal and glass sand nearby. Pop. \*350.

**SPECIAL OPPORTUNITIES.**—Glass factory. Write Wm. Salvage, or Mgr. Union Bank.

**HARDISTY**, on Battle River. Div. pt. on C.P.R., 170 miles from Edmonton. Dom. Ex. Hotels, King Edward \$2, Cecil. 2 churches, school, fire hall, public hall, bank, newspaper, telephone, elevator, 2 lumber yards, 2 dray transfer cos., 2 liverys, stud barn. A mixed farming district. Coal and brick clay deposits nearby. Pop. (special census), 510.

**SPECIAL OPPORTUNITIES.**—Brick works, cement works, shoemaker, dentist, jeweller. Write Sec. Bd. Trade.

**HIGH RIVER**, on C.P.R., 39 miles s. of Calgary, on Highwood River. Hotels, St. George \$2, Astoria \$1.50, and 2 others. Town hall, power plant, fire hall, 5 churches, 3 schools, 5 banks, creamery, electric lighting, telephone, water supply, 5 livery stables, newspaper, 4 lumber yards, planing mill and farming, polo and shooting clubs. Alt. 3,394. Pop. 1,173.

**NOTE.**—C.N. Ry. will be here shortly. Waterworks and sewerage under construction.

**SPECIAL OPPORTUNITIES.**—Flour mill, clay products plant, loan co., dentist. Write Sec. Bd. Trade.

**HOLDEN**, on G.T.P., 61 miles from Edmonton. Can. Ex. Hotel, King George. 2 churches (Pres. Meth.), public school. Pop. 111.

**SPECIAL OPPORTUNITIES**.—Flour mill, tannery. Write Mgr. Royal Bk.

**INNISFAIL**, on C.P.R., Calgary and Edmonton line, 76 miles n. of Calgary. Dom. Ex. Tel. C.P.R. Hotels, Alberta, Royal. 5 churches, \$30,000 public school, municipal building, electric light plant, fire hall, telephone, elevator (35,000 bushels), 2 banks, creamery, brick plant, newspaper, 2 livery stables, cement block factory, 2 lumber yards. Large tributary settlements. Fine farming district. Alt. 3,087. Pop. \*1,000.

**SPECIAL OPPORTUNITIES**.—Brick and tile plant, flour mill, pickle factory, steam laundry, machine shop, mortgage loans. Town offers tax exemptions and free sites to satisfactory industries. Write Sec. Bd. Trade.

**KILLAM**, on C.P.R., 69 miles from Wetaskiwin. Dom. Ex. Tel. C.P.R. Hotel, 3 elevators and warehouse (100,000 bushels), telephone, 2 lumber yards, livery stable, 1 bank. Pop. \*250.

**SPECIAL OPPORTUNITIES**.—Creamery, lawyer, baker, confectioner, laundry. Write Sec. Bd. Trade.

†**LACOMBE**, 80 miles s. of Edmonton, 112 miles n. of Calgary, on Calgary-Edmonton br. C.P.R., w. terminus of Moose Jaw and Lacombe br. Dom. Ex. Tel. C.P.R. Hotels, Adelphi \$2.50 up, Empress \$2.00. Govt. local and long distance telephones, 2 elevators (75,000 bushels), 2 grain warehouses, flour mill, planing mill, pump works, brick yards, cement block plant, municipally-owned skating and curling rink and electric light plant, \$60,000 brick school, Alberta Indust. Academy (140 students), 3 banks, opera house, 4 churches, 4 livery stables, 1 automobile livery and garage, harness factory, creamery, Dominion Experimental Farm. Gull Lake Beach, with hotel and 100 summer cottages, 8 miles w. Alt. 2,783. Pop. \*1,800.

**NOTE**—C.N.R. Calgary-Edmonton br. and Brazeau br. under construction.

**SPECIAL OPPORTUNITIES**.—Building of stores to rent, tannery, operators for planing mill and flour mill, packing and cold storage plant. See under "Agric. and Fruit Districts" and illus. Advt. Write for free pamphlet Commissioner Bd. of Trade.

**LAMONT**, on C.N.R., 40 miles e. of Edmonton. 3 churches, bank, 2 elevators.

**LEDUC**, on C.P.R. Edmonton br., 18 miles s. of Edmonton. Dom. Ex. Tel. C.P.R. Hotels, Waldorf, Leland \$2. 5 churches, public school, bank, newspaper, creamery, 3 elevators (100,000 bushels), 2 lumber yards, 3 livery stables, 2 planing mills. Alt. 2,391. Pop. 526.

**SPECIAL OPPORTUNITIES.**—Flour mill. Cheap farm lands. Town offers new industries tax exemptions, in some cases loans. Write Sec. Bd. Trade.

†**LETHBRIDGE**, on C.P.R., G.N.R. Dom. Ex. Tel. C.P.R. and West. Un. Divisional point of C.P.R., and junction of 4 branches with Crow's Nest line. Distributing point for S. Alberta, Crow's Nest Mining Country and S.E. British Columbia. Hotels, Alexandra (European plan) \$1.00 and up, Lethbridge \$2.50, Dallas \$2, and 6 others. 3 brick yards, large brewery, steam laundry, 3 elevators (100,000 bushels), 2 flour mills (625 bbls. daily), sash and door factory, 3 cigar factories, 10 banks, 4 theatres, 8 churches, large hospital, high school, kindergarten, manual training school and 5 primary schools, 2 daily and 3 weekly newspapers. Dominion Government Experimental Farm. City owns electric light and power plant, water and sewerage system, and street railway. Domestic coal supplied by 5 large coal mines, as follows: C.P.R. Co. (the Galt Mine), 1,600 tons screened coal a day, employing 300 to 600 men; the Royal Collieries, 5 miles, 600 tons semi-bituminous coal a day; the Diamond Coal Co., 5 miles, 600 tons; Lethbridge Collieries, Ltd., 1,200 tons; Cbinook Collieries, Ltd., 1,000 tons. Neighborhood supplies coal, wool, flax, wheat, farm produce, sugar beets, brick clay and cattle. Dominion Lands Office. Post of R.N.W.-M.P. Alt. 2,982. Pop. 8,050. Pop. with suburbs, \*14,000.

**SPECIAL OPPORTUNITIES.**—Wholesale houses, meat packing plant, Portland cement mills, malting plant, more flour mills, agricultural implements, windmill and pump, gasoline tractors, linseed oil mills, flax mills, all kinds of retail business and professions. See under "Agric. and Fruit Districts" and illus. Advt. Write Sec. Bd. Trade.

**LILLE**, on Bold Creek and Frank and Grassy Mt. Coal Co. Ry. Coal mining and coke making. Pop. mixed nationalities, about \*500.

†**MACLEOD**, junction of Crow's Nest Pass and Calgary and Macleod branch of C.P.R., 103 miles s. of Calgary. Div. point of Crow's Nest Ry. Dom. Ex. Tel. C.P.R. Hotels, Queen's, Empire, American, Connaught. 4 churches, good schools, headquarters of R.N.W.M.F., 4 elevators and warehouse, flour mill, cement block plant,

# CALGARY THE COMMERCIAL AND DISTRIBUTING CENTRE OF WESTERN CANADA



**Eighth Avenue, Looking West**

POPULATION

**74,000**

Cheap Natural Gas

Cheap Power and Light

Cheap Industrial Sites

Cheap Building Material

Read City and District descriptions on pages 28 and 52

Best Stock District

Best Grain District

Best Farming District

Best for Everything

**For information write Publicity Commissioner, City Hall, Calgary, Alta.**

iron works, 2 newspapers, 4 livery stables, telephone, electric light and power, water and sewerage system, grain cleaning plant, 3 printing plants, headquarters of Judicial Dist. Surrounded by vast deposits of bituminous coal and anthracite. A town of growing importance as a manufacturing and distributing centre. The C.N.R. have been granted a large tract for yards, shops, etc.; construction has already begun. The G.T.P. are expected shortly. Building material is cheap. Neighborhood supplies coal, building stone, brick clay, cement rock. Natural gas supplied from Bow Island. Alt. 3,128. Pop. (Police Census), 2,608.

NOTE.—\$100,000 municipal bldg. and \$50,000 ultra-tion plant are under construction.

SPECIAL OPPORTUNITIES.—Tannery, soap works, biscuit factory, sash and door factory, planing mill, foundry, machine shop, flour mill, furniture factory, boot factory, jobbers' and supply houses, wholesale houses, newspaper, automobile garage, theatre. Town offers free sites, tax exemptions, elec. power at 13c. per k.w. hour, less 10%. See under "Agric. and Fruit Districts" and illus. Advt. Write Sec. Bd. Trade.

**MAGRATH**, on Pot Hole Creek and Alberta R.R. and Irrigation Co.'s Line, 12 miles from Raymond. A Mormon settlement. Pres. church, 1 church of Latter Day Saints. Hotel, public school. Pop. 995.

**MEDICINE HAT**, on Saskatchewan River and C.P.R., 660 miles w. of Winnipeg. Dom. Ex. Tel. C.P.R. Hotels, Assiniboia, Cosmopolitan, American, Royal. 5 churches, 4 large schools, 2 parks, 6 banks, Gen. Hospital, Dom. Land Office, Exhibition Grounds, Dry-Farming Demonstration Farm. Elevator (60,000 bushels), Ogilvie Flour Mills (daily cap. 6,000 bbls.), Medicine Hat Milling Co. (2,000 bbls.). 4 brick plants, foundry and machine shop, tannery, glass factory (60 men), clay product factory (75 men), planing mills, nursery, rolling mills, linseed oil mills, cement block plant, steel plant, iron rolling mills, graphite and crayon factory, 6 lumber yards, 2 newspapers, 4 livery stables, saw mill. Town owns 8 natural gas wells, electric light plant, gravitation water system and industrial sites. Natural gas provides very cheap power and light at 5c. per 1,000 cub. ft. for power, 13½c. for domestic use. Neighborhood supplies coal and good clay. Alt. 2,161. Pop. 5,579.

NOTE.—The lines of C.N.R., G.T.P. and G.N.R. are surveyed to this point.

**SPECIAL OPPORTUNITIES.**—Candy factory, furniture factory, biscuit factory, agricultural implements, cereal mills, brick plants, soap works, real estate. Town offers to manufacturers practically free gas, very cheap water, and industrial sites. Write the Mayor.

**MILLET**, on C.P.R., 30 miles s. of Edmonton. Dom. Ex. Hotel, Arlington \$1.50. 2 churches (R.C., Meth.), 1 school, bank. Mixed farming district. Pop. 250.

**SPECIAL OPPORTUNITIES.**—Hardware dealer, doctor. Write Mgr. Imperial Bk.

**MORINVILLE**, on C.N.R., 23 miles n. of Edmonton. Ex. and Tel. C.N.R. Hotels, Alberta, Morinville \$2. 2 churches (R.C., Prot.), convent, R.C. and Prot. schools. Bank, lumber yard, creamery, sash and door factory, brick yard, printing and publishing co. 3 large coal mines operating 3 miles e. Boring for oil. Grain, vegetables and stock are grown. Good shooting. Pop. \*500.

**NOTE.**—Elec. power plant and chemical factory under construction.

**SPECIAL OPPORTUNITIES.**—Brick plant, dairying, dentist. Write for free pamphlet to Sec. Bd. Trade, or Mgr. Royal Bank.

**NANTON**, on C.P.R. Macleod Branch, 58 miles s. of Calgary. Dom. Ex. Tel. C.P.R. Hotels, Nanton, Auditorium. 5 churches, large school, 5 elevators, creamery, telephone, newspaper, 3 livery stables, 4 lumber yards, electric light plant. Wheat-growing and ranching district. Alt. 3,350. Pop. 900.

**SPECIAL OPPORTUNITIES.**—Flour mill, machine shop. Write Overseer.

**OKOTOKS**, on C.P.R. Macleod branch, 27 miles from Calgary. Hotels, Grand Central, Royal \$1 to \$2. 6 churches, school, opera house, 2 elevators (47,000 bushels), flour mill, 1 lumber yard, 2 banks, 2 newspapers, lumber mill, grist mill, 2 livery stables, brick clay abounds, natural gas. Good trout fishing. Alt. 3,439. Pop. 514.

**SPECIAL OPPORTUNITIES.**—Creamery, woollen mill, tannery, grist mill for sale. Write Mgr. Union Bk.

**OLDS**, on Little Red Deer River and C.P.R. Edmonton branch, 57 miles n. of Calgary. Dom. Ex. Tel. C.P.R. 2 hotels, 2 banks, 2 elevators (65,000 bushels), telephone, creamery, cement block plant, newspaper, 4 livery stables. Good farming and stock-raising district. Alt. 3,402. Pop. 917.

**SPECIAL OPPORTUNITIES.**—Flour mill, box factory, brick

plant, laundry, cobbler, electric light and power plant can be developed on Little Red River. Write Sec. Bd. Trade.

**PINCHER CREEK**, on C.P.R. Crow's Nest section. Dom. Ex. Tel. C.P.R. Hotels, King Edward \$2.50, Alberta, Arlington \$2. 5 churches, convent, public and separate schools, Hudson's Bay store, flour mill, creamery, machine shop, 3 elevators and warehouses (98,000 bushels), cement block plant, 4 lumber yards, 1 newspaper, 4 livery stables, electric light, telephone, waterworks. Coal mining. 10,000 miners employed within 60 miles. Good fishing and hunting. Alt. 3,808. Pop. 1,027.

**SPECIAL OPPORTUNITIES.**—Jobbers' and supply houses for lumbering districts, retail merchants, another flour mill, farming, cement works. Write Sec. Bd. Trade.

**PONOKA**, on C.P.R. Edmonton branch, 62 miles s. of Edmonton. Dom. Ex. Tel. C.P.R. Hotels, Royal. Leland. Fair grounds, race track, 2 elevators (65,000 bushels), 1 creamery, 3 creameries in vicinity, 2 lumber yards, newspaper, telephone, school, 5 churches, 1 bank, lumbering, ranching and mixed farming. Alt. 2,633. Pop. 841.

**SPECIAL OPPORTUNITIES.**—Flour mill. Write Sec. Bd. Trade.

**PROVOST**, on C.P.R. Winnipeg-Edmonton main line, 150 miles w. of Saskatoon. Dom. Ex. Tel. C.P.R. Hotels. Provost \$2.50. 5 churches, public school, bank, telephone, 3 elevators, park, agric. grounds, race track, village band (30 pieces), oil co., 3 lumber yards, 2 liverys, chopping mill, machine shop, 4 general stores, photographer, 2 doctors, 2 private hospitals, 4 implement warehouses. A grain-growing and mixed farming district. Pop. 400.

**SPECIAL OPPORTUNITIES.**—Flour mill, creamery, dentist, lawyer. Write Sec. Bd. Trade.

**RAYMOND**, on C.P.R. Dom. Ex. Tel. C.P.R. Hotel, Card \$2. Pres. Church, Church of Latter Day Saints, public school, Taylor Academy. Beet sugar refinery, flour mill, 2 elevators, 1 bank. Centre of good farming and stock-raising district. Pop. 1,465.

**RED DEER**, on Red Deer River. Div. point on C.P.R. (Calgary-Edmonton branch). Dom. Ex. Tel. C.P.R. Hotels, Alberta, Arlington, Windsor, Alexandra. 5 churches, Pres. Ladies' College, public and high schools, R.C. boarding school, 4 parks, opera house, electric light, telephones local and rural, waterworks, sewerage, lumber



## LACOMBE Leads in Mixed Farming



Some of Lacombe's Pure-Bred Prize Winners on the Range  
The Dominion Government Experimental Farm at Lacombe, one of the largest in Canada, affords every facility for settlers to obtain authoritative information concerning both grain and stock raising. Read description of Lacombe and District on pages 38 and 55.

For further information and literature write

**SECRETARY, BOARD OF TRADE, LACOMBE, ALBERTA**

mill, 2 elevators (75,000 bushels), 2 brick and tile plants, concrete works, stone quarry, tannery, mattress factory, wholesale leather goods co., creamery, homogenized milk factory, Alta. Pacific export mill, Dominion Lands office. Coal, sandstone, cement rock and good clay found nearby. Good fishing and shooting. Summer resorts at Syivan Lake, 14 miles, and Pine Lake, 25 miles. Town governed by a commission. Alt. 2,806. Pop. \*3,000.

**NOTE.**—Ry. lines under construction: (1) C.P.R. br. to Langdon and Bassano; (2) Alta. Cent from Moose Jaw to Yellowhead Pass; (3) C.N.R. Brazeau br.; (4) C.N.R. Calgary-Edmonton br.; (5) Inter-urban Railway.

**SPECIAL OPPORTUNITIES.**—Brick plant (several qualities of clay available), laundry, cement works, pulp mill, lumber mill, box factory, wholesale grocer and hardware, moccasins, gauntlet and rough leather factory, market gardeners, poultry farming, builders. Cheap sites, exemption from taxes to new industries. Elec. power, sliding scale, 6c. to 20c. per k.w. hour. See under "Agric. and Fruit Districts" and illus. Advt. Write Publicity Commissioner.

**SEDGEWICK**, on C.P.R. 100 miles s.e. of Edmonton. Dom. Ex. Tel. C.P.R. Local and long dist. telephone. Hotels, Pioneer (licensed), Sedgewick, Armitage (unlicensed) \$1 to \$2. 2 churches (Ang., Meth.), pub. school, 4 elevators (120,000 bushels), bank, newspaper, 2 lumber yards, 4 livery, 3 general stores and several others. Metal works, machine shop, creamery. Fine wheat-growing district. Govt. Demonstration Farm adjoining town. Pop. \*350. Write Sec. Bd. Trade.

**ST. ALBERT**, on Sturgeon River, on C.N.R., 9 miles from Edmonton. C.N.R. Ex. Tel. C.N.R. 2 R.C. churches, convent, hospital, bank, grist mill. Seat of R.C. bishop. Pop. 614.

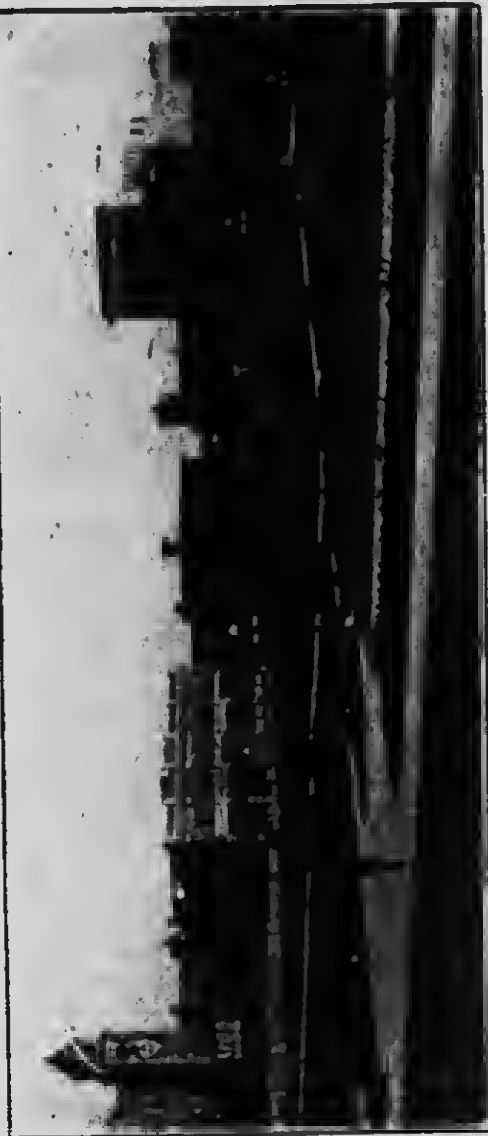
**STAVELY**, on C.P.R. Macleod branch, 73 miles s. of Calgary. Dom. Ex. Tel. C.P.R. Hotels, Stavely, T. & B. 3 elevators (150,000 bushels), 2 warehouses, telephone, 3 lumber yards, 2 livery stables, 2 banks, theatre, 3 churches, Masonic temple, public school. Pop. 245.

**SPECIAL OPPORTUNITIES.**—Flour mill, steam laundry, dentist, creamery, lawyer, veterinary surgeon. Write Sec. Bd. Trade.

**STETTLER**, on C.P.R. Lacombe branch (50 miles e. of Lacombe), and C.N.R. Vegreville and Calgary br., and Brazeau-Hanna br. Dom. Ex., C.N.R. Ex. Tel. C.P.R. and C.N.R. Govt. 'phone. 3 hotels, 2 banks, 6 churches

# LETHBRIDGE

A City Built on Solid and Permanent Foundations.



## Galt Gardens, Lethbridge

Lethbridge is the wholesale, railway and business centre of Southern Alberta and South-Eastern British Columbia. See description of city on page 39.

At the International Dry-Farming Congress and Exposition held in October, 1912, the \$2,500.00 prize for the World's best bushel of Hard Winter Wheat was won by Henry Holmes, a farmer living seventeen miles from Lethbridge, and the first prize in every hard wheat class was captured by farmers living in Lethbridge's tributary territory. See description of Lethbridge District on page 53.

Manufacturers, wholesalers or other business men planning to establish in Alberta, should investigate the claims of this city. Write

J. L. MANWARING, Secretary, Board of Trade. - Lethbridge, Alta.

\$50,000 school, 4 elevators and warehouses, newspaper, 6 livery stables, foundry, flour mill, cigar factory, steam laundry, waterworks, electric light. Very good wheat-growing district. Large deposits of good coal. A distributing point. Pop. 1,444.

**SPECIAL OPPORTUNITIES**—Brick yard, flax mill, wagon works, tannery, cement works. Write Sec. Bd. Trade.

**STONY PLAIN**, on C.N.R. and G.T.P., 25 miles from Edmonton. C.N.R. Ex. Hotel, Royal \$2. 2 churches, public school, bank. A prosperous mixed farming district. Coal and lumber in vicinity. Pop. (mostly German), 375.

**NOTE**.—A demonstration farm will soon be in operation. Write Mgr. Bank of Commerce.

**STRATHMORE**, on C.P.R. main line, 35 miles e. of Calgary; 135 miles n.w. of Medicine Hat. Dom. Ex. Tel. C.P.R. Hotels, Maple Leaf (Eur. plan), \$1 up, King Edward \$2 up. 4 churches, 2 schools, town hall. Immigration hall, bank. Headquarters and offices of western end of C.P.R. irrigated lands dept., with permanent staff. A grain and mixed farming district, supplying coal and brick clay. Alt. 3,179. Pop. about 800.

**SPECIAL OPPORTUNITIES**.—C.P.R. have large demonstration and supply farm here and give good prices for dairy produce. Town would encourage new industries. Write Sec. Bd. Trade, or Mgr. Bank of Commerce.

**TABER**, on C.P.R., 31 miles e. of Lethbridge, 76 miles w. of Medicine Hat. Dom. Ex. Tel. C.P.R. 5 hotels, 4 churches, 3 elevators (100,000 bushels), brick plant, electric light plant, water system, telephone, 2 newspapers, 3 livery stables, 3 banks, natural gas wells being developed. The Canada West Coal Co. employ from 350 to 500 men, mining 1,000 tons per day. Eureka Coal Co. produces 100 to 150 tons. The Consolidated Mines, 100 tons. Rock Springs, 250 tons. Other Co., 300 tons. Splendid farming country. Average wheat yield 30 bush. per acre. Pop. 2,321.

**NOTE**.—C.N.R. will enter in 1913.

**SPECIAL OPPORTUNITIES**—Flour and grist mill, steam laundry. Write Sec. Bd. Trade.

**TOFIELD**, on G.T.P. main line and Cal. & Edmonton branch, 41 miles e. of Edmonton, 25 miles s. of Chipman, on C.N.R., 30 miles n. of Camrose on C.P.R. Can. Ex. Tel. C.P.R. Hotel, Queen's \$2 up. 3 churches, 3 coal mines employing 50 men, 1 elevator, 3 lumber yards, 1 newspaper, station of R.N.W. Mounted Police. Town

hall and fire hall. Boating, bathing and fishing at Beaver Lake. Natural gas. Pop. 586.

**SPECIAL OPPORTUNITIES.**—Brick yard, general store, dentist. Write Sec. Bd. Trade.

**VEGREVILLE**, on Vermilion River and C.N.R. main line, 73 miles e. of Edmonton. Ex. and Tel. C.N.R. Terminus C.N.R. Calgary-Vegreville line. Hotels, Alberta, Queen's \$1.50, \$2. Govt. telephone, local and long distance, flour mill, creamery, sash and door factory, machine shop, 4 elevators, 2 brick yards, electric light plant, cold storage, fire brigade, curling rink, opera house, 4 livery stables, 2 garages, 6 churches, 2 banks, 2 hospitals, high, public and separate schools, newspaper. Good mixed farming district. Pop. 1,029.

**NOTE.**—Waterworks and sewerage being installed. Improvements under way over \$150,000.

**SPECIAL OPPORTUNITIES.**—Foundry, machine shop, overall factory, tent factory, starch factory, flax mill, oatmeal mill, breakfast food factory, cement works. Write Sec. Bd. Trade.

**VERMILION**, on Vermilion River, a div. point on C.N.R. main line Winnipeg to Pacific Coast. Ex. and Tel. C.N.R. Hotels, Brunswick \$2, Vermilion, Alberta. C.N.R. round-house and shops, electric light, grain elevator, creamery, flour mill (daily cap. 150 barrels), \$40,000 school, 20 stores, club, curling and skating rinks, 5 churches. Government demonstration farm. Centre of a mixed farming, grain-growing and stock-raising district. Pop. 1,100.

**NOTE.**—Improvements under way are electric light, rural 'phones, extension to ry. yards and station, exhibition bldgs., court house, C.N.R. branch lines.

**SPECIAL OPPORTUNITIES.**—Deposits of stone suitable for building, cereal mills, tannery, pork packing plant, foundry and machine shop, carriage building, woodworking factory, wholesale agencies and warehouses, stock raising. Write Sec. Bd. Trade.

**VIKING**, on G.T.P., 83 miles from Edmonton. Can. Ex. Hotel, King Edward \$2. 5 churches (Pres., R.C., Bap., Luth., Meth.), Govt. Emigration Hall, fire hall. Pretty lake 3 miles distant. Pop. \*300.

**SPECIAL OPPORTUNITIES.**—Flour mill. Write Sec. Bd. Trade.

**WAINWRIGHT**, div. point on G.T.P., 130 miles from Edmonton. Can. Ex. Hotels, Wainwright, Park. 4 churches (Ang., R.C., Pres., Meth.), public school. The

park here contains 1,200 head of buffalo. Brick yard  
A mixed farming district. Pop. \*960.

**SPECIAL OPPORTUNITIES.**—Sash and door factory,  
another brick yard, custom tailor, jeweller. Write Sec.  
Bd. Trade.

**WALSH**, on C.P.R. main line, 30 miles e. of Medicine Hat.  
Dom. Ex. Tel. C.P.R. Hotel, Grand \$2.50. School,  
church, bank, opera house, elevator, 2 lumber yards, 4  
general stores, 3 ilveries. Rich agricultural and sheep-  
raising district. Good shooting. Pop. about \*400.

**SPECIAL OPPORTUNITIES.**—Barber, iawyer, doctor,  
jeweller, druggist. Flour mill, brick yard, grist mill,  
creamery, woollen mill, tannery. Write Mgr. Merchants'  
Bank.

**WARNER**, on C.P.R. br. line, 42 miles s.e. of Lethbridge.  
Dom. Ex. Tel. C.P.R. Hotels, Warner \$2, Walters  
\$1.50. 4 churches (R.C., Ang., Evang., Luth.), public  
school, bank. A grain-growing district. Good shooting.  
Pop. \*350.

**SPECIAL OPPORTUNITIES.**—Grist mill, flax mill, stores,  
blacksmith. Free sites offered. Write for free pamphlet  
to Sec. Bd. Trade. or Mgr. Bank of Commerce.

†**WETASKIWIN**, on C.P.R. 150 miles n. of Calgary,  
40 miles s. of Edmonton, junction point of main line from  
Winnipeg via Saskatoon and C. & E. Ry. Dom. Ex.  
Tel. C.P.R. Hotels, Prince of Wales, Criterion \$2,  
Driard \$1, and three others. 6 elevators (210,000 bushels),  
flour mill, 2 creameries, tent and mattress factory, electric  
light and power plant, waterworks and sewerage system,  
natural gas, 3 newspapers, telephone, 12 churches, 3 banks,  
court house, hospital, 2 public, high and separate schools.  
All machine companies represented. Good farming  
district. Coal, marl and clay deposits near city. Lumber  
and fish exports to west. Brick yard. Alt. 2,480. Pop.  
\*3,000.

**SPECIAL OPPORTUNITIES.**—Cement wks., pork packing,  
tannery, biscuit factory, cereal factory, machine shop,  
foundry, planing mill, sash and door factory, condensed  
milk factory, cheese factory, brick plant, wholesalers in  
groceries, provisions and smallwares. Free building sites  
on ry. sidings. In 1913, natural gas will be supplied for  
power, light and cooking. See under "Agric. and Fruit  
Districts" and illus. Advt. Write Sec. Bd. Trade.

# MACLEOD

## THE COMING INDUSTRIAL CITY



Macleod is surrounded by thousands of acres of richest agricultural soil

Owing to its central position in the southern part of Alberta, Macleod is destined to be a large distributing centre. All utilities are owned by the municipality. Natural gas and electric power are supplied to manufacturers at low rates. Special inducements and free sites are offered by the city to prospective industries.

For descriptions of Macleod and district see pages 39 and 53.

Write for free pamphlet and all information to

**The Industrial Commissioner, Board of Trade, Macleod, Alberta**

## Agricultural Districts

*This chapter contains descriptions of some of the leading districts to which immigration is attracted. Illustrations will be found scattered through the Booklet.*

**ALBERTA.** The province may be divided as follows:

**SOUTHERN ALBERTA.** Extends from the U.S. boundary to about 100 miles from Calgary, including the basin of the S. Saskatchewan. It is practically all rolling prairie, with little timber. Altitude from 2,500 to 3,500 ft. above sea level. Rainfall light. On the ranches cattle and horses feed the year round without cover. On irrigated lands splendid wheat crops are grown. Fall wheat is successful without irrigation.

**CENTRAL ALBERTA.** Extends from the Red Deer River northward, including the basin of the N. Saskatchewan, to the height of land between this and the Athabasca River. Consists of acres of open prairie, broken by stretches of poplar and spruce wood-lands. This district is particularly adapted to mixed farming. All grain crops yield abundantly. Clover and timothy are grown. See below under Edmonton District, which includes the greater part of Central Alberta. Write for free literature to Sec. Central Alberta Development League, Edmonton, Alta.

**NORTHERN ALBERTA.** When the sovereign rights claimed by the Hudson Bay Company in Western Canada were transferred to the Dominion by the Deed of Surrender in 1869, the north limit of the so-called Fertile Belt was placed at the Saskatchewan River. It is now generally recognized that the cultivable area extends very much farther north. West of the Hudson Bay the isothermal waves tend almost north instead of west, as popularly supposed; the climate is tempered by winds from the Pacific Ocean, and though the summer is short, owing to continuous sunshine, vegetation matures more rapidly than farther south. Settlers are already entering the district in advance of transportation, but owing to its remoteness from railway communication, such settlers are drawn almost entirely from those used to a pioneering life. Experience shows that the farther north wheat, barley, etc., can be grown the heavier will be the ear and the better the quality, and the farther north live stock graze the better they fatten. In Russia, provinces of the same latitude



have for generations maintained a large population, and grain is regularly grown in the Arctic circle. See "Peace River Country," page 55.

**CALGARY DISTRICT.** Calgary is surrounded by rich rolling prairie, including the famous irrigated tract of  $1\frac{1}{2}$  million acres and the eastern slope of the Rockies. A mixed farming and dairying district, served by C.P.R., C.N.R. and G.T.P., watered by streams and abundant springs. Wells 10 to 60 feet. Soil is sandy loam with clay subsoil. Leading grain crops: Spring and fall wheat, oats, barley, rye. Flax does well; vegetables, hay and alfalfa grow abundantly. Horses, cattle and sheep thrive on plains throughout the winter. Mild winters, delightful summers. Pop. of district about 150,000, including Canadians, Americans, English, Scotch, Irish, Germans, Russians, French and Austrians. Average price per acre of raw lands, \$16. Improved farms, \$30 to \$35. See under Descriptions of Towns. See below under "Announcements." Write Publicity Commissioner, City Hall, Calgary, Alta.

**CAMROSE DISTRICT.** Within 30-mile radius of Camrose is a mixed farming country of rolling prairie. Soil, rich vegetable loam 2 ft. deep, with clay subsoil, watered by lakes and rivers. Wells 70 to 100 ft. Transportation afforded by the G.T.P., C.N.R. and C.P.R., running to Edmonton, Calgary and Winnipeg. Average crops in 1910: Wheat, 30 bush.; oats, 65 bush.; barley, 32 bush. Coal obtained at numerous mines in vicinity. Average price per acre: Raw lands, \$12 to \$18; improved farms, \$22. Pop. of district 3,500, including Canadians, English and Norwegians. District is well adapted to stock, hog and poultry raising, and dairying. See under Descriptions of Towns. Write Publicity Commissioner, Camrose, Alta.

**EDMONTON DISTRICT.** Includes greater portion of Central Alberta. Very fertile, well-watered, partially wooded country. Rich, deep, black loam with clay subsoil. Produces magnificent crops of spring wheat, winter wheat, oats, barley, rye, flax, timothy and alfalfa, potatoes, turnips and all vegetables. Pasture rich and luxuriant consistently every year. Great mixed farming and dairy country. Splendid markets developed for all farm produce. Largest and best equipped meat packing plant in Canada at Edmonton; others building. Flour mills and elevators throughout the district. Good roads, schools, churches, rural mail delivery, rural and long distance tele-

phones. The Edmonton coal area, estimated at 10,600 sq. miles, extends 200 miles westward. See under Descriptions of Towns. See below under "Announcements." Write for full description of agricultural resources to Sec. Central Alberta Development League, Edmonton, Alta. See above under Central Alberta.

**LACOMBE DISTRICT.** A rolling park-like country, well watered with springs and streams, particularly adapted to mixed farming. Soil is rich black loam, 12 to 36 in. deep, on clay subsoil. The Dominion Experimental Farm at Lacombe shows a yield of 50 bus. per acre, winter wheat on summer fallow, and 33 bus. spring wheat. Alfalfa, all grasses and clovers do well. Timothy hay yields as high as 6,600 lbs. to the acre. Lacombe District bred the Champion Shortborn Bull of Alberta in 1906, and Lacombe bred cattle have won highest honors at stock shows and exhibitions. Horses and cattle winter outside without loss. Heavy horses fetch \$600 per team. Rural mail delivery. First-rate transportation facilities. Cattle, farm and dairy produce find good local market for export. See under Descriptions of Towns. See below under "Announcements." Write Commissioner Bd. of Trade, Lacombe, Alta.

**LETHBRIDGE DISTRICT.** Famous for winter wheat. Has taken first prizes against the world. The city of Lethbridge now has railroads running east, north, west, and south, and within a few years will have an additional line from the C.P.R. The G.T.P. and C.N.R. should reach here inside of 2 years. The low freight rates give Lethbridge control of the entire trade of Southern Alberta and to the Crow's Nest Pass. Coal costs farmer \$3.25 per ton at mine. Strawberries and all small fruits do well and find ready market at good prices. Lethbridge imports annually: Eggs, 3,000 cases; cheese, 70,000 lbs.; ham, bacon and dried meats, 400,000 lbs.; lard, 190,000 lbs.; butter, 35,000 lbs., and a quantity of fruit, all of which can be produced in this district. Chief crops are wheat, oats, barley, alfalfa, clover, timothy. Poultry, hogs, sheep and cattle easily raised and profitably fattened for market. Land free from brush, price \$15 to \$35 per acre, according to improvements and distance from railway. Irrigated lands bigger. See under Descriptions of Towns. See below under "Announcements." Write Sec. Bd. Trade, Lethbridge, Alta.

**MACLEOD DISTRICT.** Contains 56 townships, 2,016 sq. miles. Soil is black loam with heavy clay subsoil, watered

# RED DEER

## THE PREMIER MIXED FARMING DISTRICT OF ALBERTA



Champion Ayrshire Herd, Lone Spruce Farm, Red Deer, Alberta

Large returns are received from dairying and stock raising. A healthful climate, big yields of grain and grasses, and good markets, make farming very profitable. The four best Dairy herds in Alberta are within eight miles of Red Deer, two Ayrshires, one Jersey, one Holstein. See pages 43 and 56. A score of stories of success will be sent you on request. Write TO-DAY.

A. H. McKeown, Commissioner, Board of Trade - Red Deer, Alberta

by 3 rivers and many springs and creeks. Traversed by C.P.R., C.N.R. under construction, G.T.P. projected. Pop. of district 40,000, including Americans, Canadians, Dutch and French. At the International Dry-Farming Exposition held at Spokane, Wash., in September, 1910, the following prizes were captured by exhibits from the Macleod District in competition with the world: Winter wheat, 1st, 2nd and 3rd; spring wheat, 1st, 2nd and 3rd; barley, 1st and 2nd; oats, 1st; spring wheat (sheaf), 1st; oats (sheaf), 2nd; best display of threshed grains, 1st; best display of wheat, 2nd; best display of any commercial body, 3rd; best agricultural display, 2nd; early potatoes, 2nd; timothy, 2nd. The following prizes were also awarded at the Interstate Fair, held at the same time: Winter wheat, 1st; spring wheat, 1st; general exhibit of wheat, 2nd. The lands that grew these exhibits can be bought from \$20 to \$40 per acre for improved farms. See under Descriptions of Towns. See below under "Announcements." Write Sec. Bd. Trade, Macleod, Alta.

**MEDICINE HAT DISTRICT.** Area trihutory to Medicine Hat is estimated at 100 sq. miles. Land is generally level or slightly rolling, with trees near S. Saskatchewan River. Served by C.P.R. The C.N.R., G.T.P. and G.N.R. are surveyed through. Soil is dark chocolate loam; heavy clay subsoil. Average annual rainfall over 14 in. Average yield of wheat, 20 bus.; oats, 45; barley, 35; flax, 15. Some crops much higher. Alfalfa does well. Population includes Canadians, Americans, English, Scotch and Germans. Mixed farming is making progress. At Provincial Fair, 1910, fall wheat, spring barley, and field peas took 1st prize over all Alberta. An experimental farm has been established to demonstrate Campbell system of Dry Farming. Price of raw lands, \$12 to \$22 per acre; improved, \$15 to \$40. A few homesteads available. See under Descriptions of Towns. See below under "Announcements." Write F. M. Ginther, Medicine Hat, Alta.

**PEACE RIVER COUNTRY.** The Peace River Country, which may be described as the last extensive area in the West within which free homesteads may be obtained, occupies a part of the Province of Alberta northwest of Edmonton, and that part of British Columbia adjacent thereto, comprising in all an area of approximately 87,850 sq. miles. It is a plateau, level to undulating, with large areas of prairie land, interspersed with groves of cottonwood or aspen, the soil being of a deep rich clay loam.

At the World's Columbian Exhibition, 1893, the first prize was won by wheat grown from this district. The country is divided into two Dominion Land Districts, namely, Peace River and Grand Prairie, and land offices have been opened for these districts at Grouard and at the town of Grand Prairie. The country around Lesser Slave Lake, Pouce Coupé and Dunvegan is rapidly filling up and around Bear Lake there is already a population of about 2,000. Grouard, Sawridge, Grand Prairie, Beaverlodge, Dunvegan, Peace River Landing, Fort Vermilion, Fort St. John, B.C., are also places of growing importance. According to various reports several railway companies intend entering the district in the near future. The Canadian Northern has already practically completed its line from Edmonton to Athabasca Landing and will probably extend through Grouard to Peace River Crossing. According to the Company's charter it should have 100 miles of the line from Onaway to Grand Prairie completed in 1912. The Canadian Pacific is said to be contemplating building a line from Edmonton, and the Grand Trunk Pacific a line from Edson. The Peace River cuts a trough-like valley through the country which at Fort Vermilion is from 500 to 1,000 feet deep and from 1 to 3 miles wide. Its principal tributaries are the Red, Loon, Smoky, and North and South Pine Rivers and, with the exception of three obstructions, it is navigable for steamboats for about 863 miles. The Hudson Bay Company have steamers on the Peace, and the Peace River Trading and Navigation Company intend establishing a service during the summer of 1912. The Northern Navigation Company and the Hudson Bay Company have steamboats plying between Athabasca Landing and the west end of Lesser Slave Lake. At Vermilion Falls there is a water power estimated at from 160,000 to 200,000 horse-power, and at the Peace River Canyon there is a splendid water power as yet unestimated. Vast areas of the country are known to be underlaid with coal, especially at the Peace River Canyon. White gypsum is found along the Lower Peace. A valuable timber area of about 300 sq. miles in extent lies north of St. John in British Columbia, and another area of approximately 300 sq. miles in the divide between the Cutbank and South Pine River, south of the Peace.

**RANCHING LANDS.** See under Southern Alberta, page 51, and see Dominion Grazing Leases, page 4, and Ranching, page 19.

**RED DEER DISTRICT.** Land is black loam, 10 to 20 inches deep, with clay subsoil, gently rolling, well watered

by Red Deer River and many smaller lakes and streams. Wells, 15 to 40 feet deep. One of the most famous dairy-ing districts of Western Canada. The 4 leading dairy herds of Alberta are within 8 miles of Red Deer. 2 Ayr-shires, 1 Jersey. 1 Holstein. Leading crops are oats, barley, timothy and celery; all kinds of vegetable truck are grown. Farm products are marketed direct to the consumer through The Farmers' Co-operative Association, with headquarters at Red Deer. Red Deer District has taken prizes as follows: World's Fair, Chicago, 1893, spring wheat and oats, 1st prize; Provincial Exhibition, Calgary, 1909, 82 varieties of grasses were marked 100%; 1911-1912, Provincial Championship creamery butter prizes and Champion Ayrshire and Holstein herds at Cal-gary and Edmonton Fairs. 1912, Jersey cow "Rosallnd of Old Basing," in a 3-year official test, gave 15,700 lbs of milk, testing 5.16 per cent., winning the Championship of the British Empire for 3-year official milk and butter test. 1911, Hackney Stallion Championship Average price of raw lands per acre, \$15 to \$20 improved farms, \$18 to \$30. Considerable number of homesteads are available within 35 to 40 miles from town. Railway lines now under construction will give access to these. Wood and coal in the immediate locality. See under Descrip-tions of Towns. See below under "Announcements." Write Publicity Commissioner, Red Deer, Alta.

**SCHOOL LANDS.** See under Dominion School Lands.

**VEGREVILLE DISTRICT.** 75 miles e. of Edmonton, in centre of Vermilion Valley, comprising many thousand acres of splendid wheat and mixed farming land, well watered, partially wooded. District served by two rail-ways, another projected. Soil, very rich, deep black loam, underlaid with clay subsoil. Wheat, oats, barley, all kinds of vegetables, roots, wild and tame grasses, small fruits, etc., do well. Demand far exceeds supply of horses, cattle, sheep and hogs, for which the district has a reputation. Clear, bright climate, abundance of fuel, good roads, pure water. Homesteads still available within easy reach of good schools, post offices and churches. See under Descriptions of Towns. Write Sec. Bd. Trade, Vegreville, Alta.

**VERMILION VALLEY.** A famous grain-growing and stock-raising section, traversed by main line C.N.R. (trans-continental route), Saskatchewan River, along northern boundary, soon to be opened for transportation. Develop-ment has been very rapid in past 5 years. Wheat yield per



READ ON PAGES 49 AND 59 THE DESCRIPTION OF

# WETASKIWIN

AND THE SURROUNDING DISTRICT

---

**Note the Special Opportunities**  
For Manufacturers, Investors, Farmers and other Individuals

---

For free illustrated literature and other  
information write

**SECRETARY, BOARD OF TRADE**  
**WETASKIWIN, ALBERTA**



## ANNOUNCEMENTS

59

acre averages 30 to 50 bushels. Water, wood and coal in abundance. Plenty of land available for farmers of small or large means. Exceptionally good free homesteads available. Good market for all farm products, horses, cattle and swine. Good roads, schools, churches and mission stations. Fine timber in northern sections. Game plentiful; lakes well supplied with fish. See under Descriptions of Towns. Write Sec. Bd. Trade, Vermilion, Alta.

**WETASKIWIN DISTRICT.** Specially recommended by Dominion Geological Surveyors, Professors Tyrell and Macoun. Prof. Macoun in his report on the district says: "This tract is unsurpassed in the Northwest for its capacity to grow wheat, as the soil is richer, the surface is almost level, and what slope there is inclines to the south." Average yield of grain per acre: Oats, 60 to 100 bushels; wheat, 35 to 50; barley, 40 to 50. Choice land from \$10 to \$25 per acre. Homestead lands west of city, 40 miles. See under Descriptions of Towns. Write Sec. Bd. Trade, Wetaskiwin, Alta.

## ANNOUNCEMENTS

*Announcements concerning lands will be accepted only from responsible firms of recognized standing, personally known to the Editors. The Editors reserve the right to edit matter received. For descriptions of districts referred to in the headings of these Announcements, see above.*

**NOTE.**—The Alberta Government assumes no responsibility whatever in connection with these Announcements.

**BOW RIVER VALLEY—CANADIAN PACIFIC RY. LANDS.** When the Canadian Pacific Ry. was projected, the company was given 25 million acres in Western Canada. Of the 6 million acres still belonging to the Co. the portion in Alberta may be roughly divided into the Bow River Valley Irrigation block and Central Alberta Lands. They are for sale by the C.P. Irrigation Colonization Department, Calgary. Non-irrigated land sells at \$11 per acre up, irrigated at \$50 and up. It has been found that from 160 acres of irrigable land an independence may be gained in a few years. All C.P.R. lands are sold on 10-year payments, and if a purchaser takes up residence on, and cultivates the land, the payment due at the end of the first year and all subsequent years is set forward one year. Combination farms of irrigable and non-irrigable lands may be obtained at terms within reach of all, irrigated portions raising small fruits, alfalfa and all grains, root and



## ANNOUNCEMENTS

fodder crops; non-irrigated portions winter wheat, cereals, and the finest pasture. Average yields in bushels per acre last year in Bow River Valley were: Winter wheat, 81.45; oats, 48.11; speltz, 86.87; barley, 87.55; rye, 80.41; flax, 18.88. Good markets. Cheap living, abundance of water, and a splendid climate, lead to the establishment of thousands of homes in the Bow Valley. Write J. S. Dennis, Assistant to the President, C.P. Ry. Co., Calgary, Alta.

**CALGARY DISTRICT—F. C. LOWES & Co.** We control over a million and a half acres of farm lands in various parts of Alberta, suitable for wheat, mixed farming or ranching. The soil for the most part is rich black loam, and averages 18 in. in depth, with a clay subsoil. In many cases oats thresh out from 85 to 120 bushels to the acre, and weigh from 42 to 54 lbs. to the bushel. In wheat, whole districts have averaged 40 bushels to the acre, and instances are not uncommon where farmers have threshed 60 bushels to the acre. As a stock and dairy country Alberta is world famous. Raw lands, according to location, quality, etc., cost from \$12 to \$30 an acre. Improved farms range in cost from \$15 to \$40 an acre, with easy terms of payment. For maps of Alberta, or copies of our booklet, "Where Wheat is King," and full information, write to F. C. Lowes & Co., Head Office, Calgary.

**CANADIAN PACIFIC RAILWAY—READY-MADE FARMS.** In suitable districts the C.P.R. reserves an area divided into farms of 80 to 160 acres on irrigated, and 160 to 300 acres on non-irrigated lands. On these farms the company places the following improvements: 4-roomed house, 24 x 24, cost \$600 to \$700; barn, 16 x 8, \$250 to \$350; well, according to depth, \$2.50 per foot; fencing, about \$125 per mile; cultivation of land at current prices per acre, which in 1911 were: Breaking, \$3.50 to \$4; discing, 50c.; packing, 50c.; harrowing (each operation), 35c.; drilling (seeding), 60c.; seed, \$1.50 per acre; harvesting, including stacking, \$1.25; stubble plowing, \$2 to \$2.50; four-horse team and man per day, \$6; two-horse team and man per day, \$4. A small percentage is added for cost of administration. The purchase price of land and improvements with 6% interest is payable in 10 annual instalments. Settlers must come from the United Kingdom, be practical farmers, be married, and possess a small capital. The settler can reap a harvest shortly after arrival, can co-operate with his neighbors in the purchase of implements and knows exactly his initial expense. Write Colonization Dept., C.P.R., at 85 Charing Cross, London, Eng., or at Calgary, Alta.

**EDMONTON DISTRICT—CRAFTS, LEE & GALLINGER.** Unimproved lands in small blocks of 1,000 to 5,000 acres at prices

ranging from \$10 to \$20 per acre. Good farms of 160 acres to 640 acres at the same price, and on easy terms of payments. These lands are well watered and conveniently located to towns and railways. The soil, on most of these lands, is a rich black loam with a clay subsoil, and suitable for grain growing or mixed farming. Improved farms in good state of cultivation, at prices ranging from \$15 to \$40 per acre. These improved farms have considerable areas under cultivation with houses and barns. We will be glad to forward maps of the district and descriptions of any lands on enquiry. Crafts, Lee & Gallinger, Land and Business Exchange, Edmonton, Alta.

**EDMONTON DISTRICT—F. C. LOWES & Co.** We have for sale at reasonable prices and terms rich agricultural land, also improved farms from 160 acres up. Write for full information, maps, price lists, etc. Coal lands of merit, timber limits, etc. (full particulars on application). F. C. Lowes & Co., Edmonton, Alta.

**EDMONTON DISTRICT—ROLFE & KENWOOD.** We have a large list of improved and unimproved farm lands, from \$12 to \$30 per acre. All in close proximity to railway and schools. We shall be pleased to submit particulars of some exceptionally good farms under cultivation to prospective buyers. Rolfe & Kenwood, Edmonton, Alta.

**EDMONTON DISTRICT—SANDEMAN-COPE CO., LTD.** Unimproved lands from \$10 to \$25 an acre. Improved lands, \$15 to \$50. Anything from 160 acres up. Maps and descriptions forwarded on application. Sandeman-Cope Co., Ltd., Edmonton, Alta.

**LACOMBE DISTRICT—THE ALBERTA PROVINCIAL LAND AGENCIES, LTD.** Our organization reaches every part of the province. We have offices in Calgary, Edmonton, Lacombe, Didsbury, Provost and Coronation, and representatives in every town in Alberta. We can suit the land buyer, as we have all kinds of land in different localities, from \$5 (£1) per acre for raw lands up to the highest priced improved farms. We are sole agents for The Alberta Provincial Land Owners, Ltd.; The Calgary Property Owners, Ltd.; The Edmonton Property Owners, Ltd.; The Lacombe Property Owners, Ltd., and The Coronation Property Owners, Ltd. Total capital, \$2,085,000. Write for information, maps, catalogues, etc. If coming to Alberta, have your mail addressed to our office. No charge for these services. Central office, Lacombe, Alta. Calgary office, opposite C.P.R. station.

**LACOMBE DISTRICT—JESSE FRASER AGENCY.** We have land in this district at \$12 to \$20 per acre, producing heavier crops



In the Bow River Valley, near Calgary. See pages 28, 52, 59.

than similar land in the Western States valued at \$60 to \$80 per acre. Land values are increasing steadily here as elsewhere. The Dominion Experimental Farm, located at Lacombe, gives farmers in this district an enormous advantage. We shall be glad to correspond with any one interested. Jesse Fraser Agency, Lacombe, Alta.

**LETHBRIDGE DISTRICT—ASQUITH & LINDSEY.** We have improved and unimproved farms for sale. We specialize in Lethbridge city property and recommend inside revenue-producing property for conservative investments. Write to Asquith & Lindsey, Lethbridge, Alta.

**LETHBRIDGE DISTRICT—WILSON & SKEITH.** Sole Lethbridge agents for C.P.R. Co.'s lands. We have for sale the choicest irrigable and non-irrigable farm lands in the district, and the best city properties. Irrigated lands here offer the finest opportunities in the West for mixed and dairy farming. Small fruits and vegetables thrive and find ready home market in Lethbridge and the Crow's Nest mining centres. C.P.R. Co.'s irrigable land from \$30 to \$100 per acre is undoubtedly a splendid investment. Write for particulars. Wilson & Skeith, C.P.R. Agents, Lethbridge, Alta.

**MACLEOD DISTRICT—THE R. H. HILLIARD AGENCY.** At New York, 1911, Macleod wheat took 2nd place in the competition for Sir Thomas Shaughnessy's \$1,000 prize, losing 1st place by only half a point. Macleod wheat has won for three consecutive years in competition with the world. Good farms, capable of producing 30 to 60 bushels of wheat to the acre, can be bought at average of \$27 per acre. Railways through the whole district provide excellent shipping facilities. Land rapidly increasing in value. Write The R. H. Hilliard Agency, Macleod, Alta.

**MEDICINE HAT DISTRICT—THE F. M. GINTHER LAND CO., LTD.** We control 250,000 acres of choice farm lands in sunny Southern Alberta at prices ranging from \$10 to \$30 per acre. The land is level to slightly rolling prairie, suitable for all kinds of grains, root crops and mixed farming. The soil is a deep rich chocolate loam. Wheat yields up to 62 bushels, oats up to 125 bushels per acre, flax up to 25 bushels, and potatoes up to 500 bushels to the acre. Buy farm lands where one crop pays for the land, where the land is sure to double in value within the next two years, and where there are splendid opportunities for farming and for investment. Write The F. M. Ginther Land Co., Ltd., Medicine Hat, Alta.

**SOUTHERN ALBERTA FARM LANDS—WILKIE & KERR.** We have selected tracts of sunny Southern Alberta farm lands—

*in a district where the soil is rich, the winter mild, and where the long hours of sunshine make the heart glad. This land ranks with the best in the West in productiveness, but can still be acquired at low prices. Our lists include improved or unimproved farms on dry or irrigated land. We have also a few tracts of high-grade coal land in the lignite and bituminous fields. Full particulars gladly forwarded of these, or of sound investment propositions in Lethbridge City. Wilkie & Kerr, Lethbridge, Alta.*

**STRATHCONA DISTRICT—SANDEMAN-COPE CO., LTD.** All classes of farm lands, raw and improved, Exceptionally fertile soil. The best mixed farming district in Alberta. Write for maps and prices. All enquiries answered. Sandeman-Cope Co., Ltd., Edmonton, Alta.

**SULLIVAN LAKE DISTRICT—CANADIAN DOMINION DEVELOPMENT, LTD.** We have 5,000 acres of wheat lands here for sale, at fair prices and on easy terms. Canadian Dominion Development, Ltd., 284 Portage Ave., Winnipeg, Man.



Mention Heaton's Annual when writing to local references.

# IMPERIAL BANK OF CANADA

Established 1875

**HEAD OFFICE - TORONTO**

D. R. WILKIE, President and General Manager  
HON. ROBT. JAFFRAY - Vice-President

---

Capital Paid-up	-	-	\$6,685,000
Reserve Fund	-	-	6,685,000

---

## BRANCHES IN ALBERTA

Athabasca Landing	Lethbridge
Banff	Medicine Hat
Calgary	Millet
do. (East End)	Redcliff
Edmonton	Red Deer
do. (West End)	Rocky Mountain
do. (North End)	House
do. (South)	Wetaskiwin

Also Branches throughout the Dominion. Exceptional facilities afforded for the transaction of every kind of banking business.

The Branches of the Bank will be pleased to answer enquiries regarding local conditions, etc.

# ADDRESS

This book can  
be mailed as  
printed matter  
—use 4d. (1c.)  
stamp.  
To keep closed  
for mailing, use  
rubber band or  
clip.





