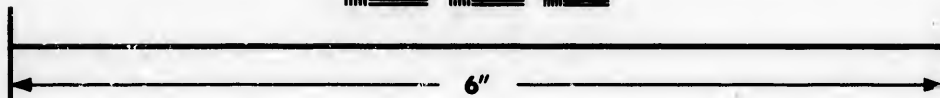
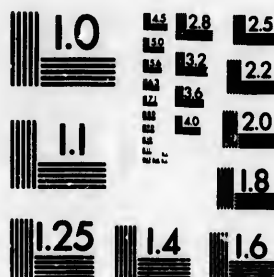


**IMAGE EVALUATION
TEST TARGET (MT-3)**



**Photographic
Sciences
Corporation**

23 WEST MAIN STREET
WEBSTER, N.Y. 14580
(716) 872-4503



**CIHM/ICMH
Microfiche
Series.**

**CIHM/ICMH
Collection de
microfiches.**



Canadian Institute for Historical Microreproductions / Institut canadien de microreproductions historiques



© 1985

Technical and Bibliographic Notes/Notes techniques et bibliographiques

The Institute has attempted to obtain the best original copy available for filming. Features of this copy which may be bibliographically unique, which may alter any of the images in the reproduction, or which may significantly change the usual method of filming, are checked below.

L'Institut a microfilmé le meilleur exemplaire qu'il lui a été possible de se procurer. Les détails de cet exemplaire qui sont peut-être uniques du point de vue bibliographique, qui peuvent modifier une image reproduite, ou qui peuvent exiger une modification dans la méthode normale de filmage sont indiqués ci-dessous.

- Coloured covers/
Couverture de couleur
- Covers damaged/
Couverture endommagée
- Covers restored and/or laminated/
Couverture restaurée et/ou pelliculée
- Cover title missing/
Le titre de couverture manque
- Coloured maps/
Cartes géographiques en couleur
- Coloured ink (i.e. other than blue or black)/
Encre de couleur (i.e. autre que bleue ou noire)
- Coloured plates and/or illustrations/
Planches et/ou illustrations en couleur
- Bound with other material/
Relié avec d'autres documents
- Tight binding may cause shadows or distortion along interior margin/
La reliure serrée peut causer de l'ombre ou de la distorsion le long de la marge intérieure
- Blank leaves added during restoration may appear within the text. Whenever possible, these have been omitted from filming/
Il se peut que certaines pages blanches ajoutées lors d'une restauration apparaissent dans le texte, mais, lorsque cela était possible, ces pages n'ont pas été filmées.
- Additional comments:/
Commentaires supplémentaires:

- Coloured pages/
Pages de couleur
- Pages damaged/
Pages endommagées
- Pages restored and/or laminated/
Pages restaurées et/ou pelliculées
- Pages discoloured, stained or foxed/
Pages décolorées, tachetées ou piquées
- Pages detached/
Pages détachées
- Showthrough/
Transparence
- Quality of print varies/
Qualité inégale de l'impression
- Includes supplementary material/
Comprend du matériel supplémentaire
- Only edition available/
Seule édition disponible
- Pages wholly or partially obscured by errata slips, tissues, etc., have been refilmed to ensure the best possible image/
Les pages totalement ou partiellement obscurcies par un feuillet d'errata, une pelure, etc., ont été filmées à nouveau de façon à obtenir la meilleure image possible.

This item is filmed at the reduction ratio checked below/
Ce document est filmé au taux de réduction indiqué ci-dessous.

10X	14X	18X	22X	26X	30X
<input type="checkbox"/>	<input type="checkbox"/>	<input type="checkbox"/>	<input checked="" type="checkbox"/>	<input type="checkbox"/>	<input type="checkbox"/>
12X	16X	20X	24X	28X	32X

The copy filmed here has been reproduced thanks to the generosity of:

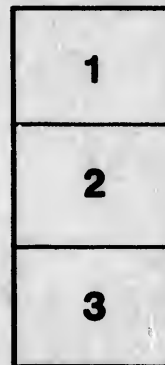
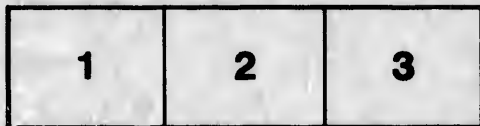
Harold Campbell Vaughan Memorial Library
Acadia University

The images appearing here are the best quality possible considering the condition and legibility of the original copy and in keeping with the filming contract specifications.

Original copies in printed paper covers are filmed beginning with the front cover and ending on the last page with a printed or illustrated impression, or the back cover when appropriate. All other original copies are filmed beginning on the first page with a printed or illustrated impression, and ending on the last page with a printed or illustrated impression.

The last recorded frame on each microfiche shall contain the symbol \rightarrow (meaning "CONTINUED"), or the symbol ∇ (meaning "END"), whichever applies.

Maps, plates, charts, etc., may be filmed at different reduction ratios. Those too large to be entirely included in one exposure are filmed beginning in the upper left hand corner, left to right and top to bottom, as many frames as required. The following diagrams illustrate the method:



L'exemplaire filmé fut reproduit grâce à la générosité de:

Harold Campbell Vaughan Memorial Library
Acadia University

Les images suivantes ont été reproduites avec le plus grand soin, compte tenu de la condition et de la netteté de l'exemplaire filmé, et en conformité avec les conditions du contrat de filmage.

Les exemplaires originaux dont la couverture en papier est imprimée sont filmés en commençant par le premier plat et en terminant soit par la dernière page qui comporte une empreinte d'impression ou d'illustration, soit par le second plat, selon le cas. Tous les autres exemplaires originaux sont filmés en commençant par la première page qui comporte une empreinte d'impression ou d'illustration et en terminant par la dernière page qui comporte une telle empreinte.

Un des symboles suivants apparaîtra sur la dernière image de chaque microfiche, selon le cas: le symbole \rightarrow signifie "A SUIVRE", le symbole ∇ signifie "FIN".

Les cartes, planches, tableaux, etc., peuvent être filmés à des taux de réduction différents. Lorsque le document est trop grand pour être reproduit en un seul cliché, il est filmé à partir de l'angle supérieur gauche, de gauche à droite, et de haut en bas, en prenant le nombre d'images nécessaire. Les diagrammes suivants illustrent la méthode.

POST OFFICE DIRECTOR

ROYA SCOTIA

POST OFFICE DIRECTOR
OTTAWA
POST OFFICE DIRECTOR
OTTAWA



POST OFFICE DIRECTOR
OTTAWA

POST OFFICE DIRECTOR
OTTAWA
POST OFFICE DIRECTOR
OTTAWA

A
383
785

A
POST OFFICE DIRECTORY

FOR
NOVA SCOTIA:

SHEWING THE NAMES OF EVERY VILLAGE, SETTLEMENT, AND TOWNSHIP
IN THE PROVINCE, WITH THE NAME OF THE POST OFFICE TO WHICH
LETTERS FOR SUCH PLACES SHOULD BE ADDRESSED.



*General Post Office,
Halifax, Nova Scotia, 1850.*

LONDON:
J. HARTNELL AND CO., PRINTERS, RED LION COURT, FLEET STREET.

FOR HER MAJESTY'S STATIONERY OFFICE.

1850.

POST OFFICE DIRECTOR

NOV 1 1891

EXPLANATION. THE LETTERS WHICH FOLLOW
GIVE THE MEANING OF THE LETTERS WHICH
ARE USED IN THE POST OFFICE LIST.

- V.....means.....Village.
- T.....".....Township.
- H.....".....Harbor.
- R.....".....River.
- W.O.....".....Way Office.
- S.....".....Settlement.



NOV 1 1891

POST OFFICE DIRECTOR

POST OFFICE DIRECTORY

FOR

NOVA SCOTIA.

NAME OF PLACE, And whether Village or Settlement, &c.		County	Post Town
Abercrombie Point	S	<i>Pictou</i>	Pictou
Abruptic	S	<i>Yarmouth</i> ..	Yarmouth
Addington Forks	S	<i>Sydney</i> ...	Antigonish
—— Grant	S	<i>Do.</i>	<i>Do.</i>
Advocate Harbor (W. O.) ...	S	<i>Cumberland</i> .	Parrsborough
Apple River (W. O.)	S	<i>Do.</i> .	<i>Do.</i>
Argyle or Argyle Bay	S	<i>Inverness</i> ..	Plaister Cove
Arisaig	S	<i>Sydney</i>	Antigonish
Auchin Cairro	S	<i>Pictou</i>	Durham
Aylesford (W. O.)	S	<i>King's</i>	Kentville

B

NAME OF PLACE, And whether Village or Settlement, &c.		County	Post Town
Bailey's Brook	S	<i>Pictou</i>	New Glasgow
Ballantyne	S	<i>Sydney</i>	Antigonish
Backster's Harbor	H	<i>King's</i>	Kentville
Bass River.....	R	<i>Colchester</i> ..	Londonderry
Barney's River..	S	<i>Pictou</i>	Merigonish
Baddek, Little, (W. O.)	S	<i>Cape Breton</i> .	Sydney
—— Big	S	<i>Inverness</i> ..	Plaister Cove
Barry's Point	S	<i>Shelburne</i> ..	Shelburne
Ball's Creek (W. O.)	S	<i>Cape Breton</i> .	Sydney
Bay St. Lawrence..	S	<i>Do.</i> .	<i>Do.</i>
Basin Minus	S	<i>King's</i>	Wolfville
Beaver Meadow	S	<i>Sydney</i>	Antigonish
Bear Island	S	<i>Inverness</i> ..	Plaister Cove
—— River.....	S	<i>Annapolis</i> ..	Annapolis
Beach Meadows	S	<i>Queen's</i>	Liverpool
Beaver Dam	L	<i>Shelburne</i> ..	Shelburne
Benemen or Beneving.....	S	<i>Cape Breton</i> .	Sydney
Beaver Brook	S	<i>Colchester</i> ..	Truro
Bellivons Cove	S	<i>Digby</i>	Weymouth

NAME OF PLACE. And whether Village or Settlement, &c.		County	Post Town
Beaver River.....	S	<i>Digby</i>	Weymouth
—— Harbor.....	H	<i>Halifax</i>	Halifax
Bear Cove.....	S	<i>Do.</i>	Do.
Birch Town.....	H	<i>Shelburne</i> ..	Shelburne
Big Marsh.....	S	<i>Sydney</i>	Antigonish
—— Cove.....	S	<i>Richmond</i> ..	St. Peter's
—— Pond.....	S	<i>Cape Breton</i> ..	Sydney
—— Bras D'Or.....	S	<i>Do.</i>	Do.
—— Lorain.....	S	<i>Do.</i>	Do.
Black River.....	S	<i>Do.</i>	Do.
——.....	S	<i>Guysborough</i> ..	Antigonish
Blandford.....	S	<i>Lunenburgh</i> ..	Chester
Black Rock.....	S	<i>Queen's</i>	Liverpool
Blue Mountains (W. O.)....	S	<i>Pictou</i>	New Glasgow
Black Rock.....	S	<i>Inverness</i> ..	Plaister Cove
—— Point.....	H	<i>Shelburne</i> ..	Shelburne
—— River.....	R	<i>Cumberland</i> ..	Londonderry
Blue Rocks.....	S	<i>Lunenburgh</i> ..	Lunenburgh
Block House (N.W.).....	S	<i>Do</i>	Do.

NAME OF PLACE, And whether Village or Settlement, &c.		County	Post Town
Bowersville	S	<i>Shelburne</i> ..	Shelburne
Boat Harbor	H	<i>Do.</i> .	<i>Do.</i>
Boulardarie (W.O.)	Isd.	<i>Cape Breton</i> .	Sydney
Brookfield (W.O.)	S	<i>Queen's</i>	Liverpool
Bridgeport... ..	S	<i>Cape Breton</i> .	Sydney
Bras D'Or Lake	S	<i>Do.</i> .	<i>Do.</i>
———— Little	S	<i>Do.</i> .	<i>Do.</i>
Brier Island (W O.)	S	<i>Digby</i>	Digby
Broad Cove Marsh (W. O.)..	S	<i>Inverness</i> ..	Port Hood
———— Interval (W.O.)..	S	<i>Do.</i> ..	<i>Do.</i>
Buckfield	S	<i>Queen's</i>	Bridgewater
Burnside	S	<i>Yarmouth</i> ..	Yarmouth
Byanacadie	S	<i>Cape Breton</i> .	Sydney

NAME OF PLACE, And whether Villages or Settlement, &c.	County	Post Town
Capeock	S	<i>Sydney</i> Antigonish
Cape George (W.O.)	S	<i>Do.</i> Do.
Camperdown	S	<i>Halifax</i> Halifax
Canso, Cape (W.O.)	S	<i>Guysborough.</i> Guysborough
Canard River	S	<i>King's</i> Kentville
Canning (W.O.)	S	<i>Do.</i> Do.
Canard (W.O.)... ..	S	<i>Do.</i> Do.
Caledonia	S	<i>Queen's</i> Liverpool
Castle Bay	S	<i>Colchester</i> .. Londonderry
Carriboo Cove	S	<i>Pictou</i> Pictou
Carriboo	S	<i>Do.</i> Do.
Cape John	S	<i>Do.</i> Do.
Cape Jack (Light-house)....	S	<i>Sydney</i> . . . Antigonish
Carleton	H	<i>Shelburne</i> .. Shelburne
Catalone (W.O.)	S	<i>Cape Breton.</i> Sydney
Cape Dauphin	S	<i>Do.</i> . . . Do.
Cape North (W.O.)	S	<i>Do.</i> . . . Do.
— Cove	S	<i>Digby.</i> Weymouth
Catch Harbor	S	<i>Halifax</i> Halifax

NAME OF PLACE, And whether Village or Settlement, &c.		County	Post Town
Campbell's Beach	S	<i>Cape Breton</i> .	Sydney
Centre Range	S	<i>Lunenburg</i> .	Lunenburg
Chelsea	S	<i>Do.</i> .	<i>Do.</i>
Cherry Hill	S	<i>Do.</i> .	<i>Do.</i>
Cheticamp (W.O.)	S	<i>Cape Breton</i> .	Port Hood
Chivari .. <i>Chivari</i>	S	<i>Hants</i>	Newport
Chance Harbor	H	<i>Pictou</i>	Pictou
Church Over	H	<i>Shelburne</i> . .	Shelburne
—— Point	S	<i>Digby</i>	Weymouth
Chizzetcook	S	<i>Halifax</i>	Halifax
Clements (W.O.)	S	<i>Annapolis</i> . .	Annapolis
Clam Harbor	S	<i>King's</i>	Kentville
Clyde River	S	<i>Shelburne</i> . .	Shelburne
Clare	S	<i>Digby</i>	Weymouth
Clam or Little Harbor	S	<i>Halifax</i>	Halifax
Clarence	S	<i>Annapolis</i> . .	Bridgetown
Clements (W. O.)	S	<i>Do.</i>	Annapolis
Cornwallis (W.O.)	V	<i>King's</i>	Kentville
Clear Land	S	<i>Lunenburg</i> .	Lunenburg

NAME OF PLACE, And whether Village or Settlement, &c.	County	Post Town
Conquer all Bank.	S	<i>Lunenburg</i> . Bridgewater
Country Harbor (W.O.)	S	<i>Guysborough</i> . Guysborough
Coddell's Harbor	S	<i>Do.</i> . Do.
Cockmagan	R	<i>Hants.</i> Newport
Cox Heath.	S	<i>Cape Breton</i> . Sydney
Cow Bay	S	<i>Halifax</i> Halifax
Cross Roads, Upper.	S	<i>Guysborough</i> . Guysborough
———— Lower, (W.O.) ..	S	<i>Do.</i> . Do.
Crouce Town.	S	<i>Lunenburg</i> . Lunenburg
Crow Harbor	S	<i>Guysborough</i> . Guysborough
Cross Roads	S	<i>Cumberland</i> . Parrsborough
Cranberry Lake	S	<i>Do.</i> . Do.
Craignish	S	<i>Inverness</i> .. Plaister Cove

NAME OF PLACE, And whether Village or Settlement, &c.		County	Post Town
Dalhousie (E. part)	S	<i>Lunenburg</i> .	Chester
Dalhousie	S	<i>Annapolis</i> ..	Annapolis
——— Mountain	S	<i>Pictou</i>	Pictou
Dartmouth (W.O.)	V	<i>Halifax</i>	Halifax
Descourse	S	<i>Richmond</i> ..	Arichat
De Bert	V	<i>Colchester</i> ..	Londonderry
——— River	R	<i>Do.</i> ..	<i>Do.</i>
Deligent River	S	<i>Cumberland</i> .	Parrsborough
Doctor's Brook	S	<i>Sydney</i>	Antigonish
Douglas, or Gore (W.O.) ..	S	<i>Hants.</i> . . .	Newport
Dover	S	<i>Halifax</i>	St. Margaret's Bay
Dublin, Upper and Lower ..	S	<i>Lunenburg</i> .	Lunenburg
Dunk's Cove	S	<i>Halifax</i>	Halifax
Dutch Village	S	<i>Do.</i>	<i>Do.</i>
Duffu's Island	S	<i>Cape Breton</i> .	Sydney
Dunlap's Sable River (W.O.)	S	<i>Shelburne</i> ..	Shelburne

NAME OF PLACE, And whether Village or Settlement, &c.		County	Post Town
East River (St. Mary's)	S	<i>Guysborough.</i>	Antigonish
Eagle Head	S	<i>Queen's</i>	Liverpool
Earlton (W.O.)	S	<i>Colchester . .</i>	Truro
East Bay (W.O.)	S	<i>Cape Breton .</i>	Sydney
Economy (W.O.)	S	<i>Colchester . .</i>	Truro
Eight Mile Brook	S	<i>Pictou</i>	Pictou
Equisong (Indian)	S	<i>Cape Breton .</i>	Sydney
Eacum-secum	S	<i>Guysborough.</i>	Antigonish
Falmouth (W.O.)	T	<i>Hants.</i>	Windsor
——— Lower	S	<i>Do.</i>	<i>Do.</i>

NAME OF PLACE, And whether Village or Settlement, &c.		County	Post Town
Fisherman's Harbor	S	<i>Guysborough.</i>	Guysborough
Fisher's Grant	Ferry	<i>Pictou</i>	New Glasgow
Five Houses	S	<i>Lunenburg</i> .	Lunenburg
Flamborough.....	S	<i>Richmond</i> ..	St. Peters
Floucket or Fork Harbor ..	H	<i>Cape Breton.</i>	Sydney
Forks (St. Mary's)	S	<i>Guysborough.</i>	Antigonish
—— (Pomket)	S	<i>Sydney</i>	Do.
Fox Point	S	<i>Halifax</i>	St. Margaret's Bay
Four Mile Brook	S	<i>Pictou</i>	Durham
Fox Island.....	S	<i>Guysborough.</i>	Guysborough
Folly Village....	V	<i>Colchester</i> ..	Londonderry
—— Mountain.....	S	<i>Do.</i>	Do.
Fox River.....	S	<i>Cumberland</i> .	Parrsborough
—— Harbor, Gulf Shore, } (W.O.)	S	<i>Do.</i>	Wallace
Foubourg	S	<i>Lunenburg</i> .	Lunenburg
French Cross Harbor.....	S	<i>King's</i>	Kentville
Fraser's Mountains	S	<i>Pictou</i>	New Glasgow
—— Mills, E. River, (W.O.)	S	<i>Do.</i>	Do.
French Village..	V	<i>Halifax</i>	St. Margaret's Bay

NAME OF PLACE, And whether Village or Settlement, &c.	County	Post Town
French Village	V	<i>Cape Breton</i> . Sydney
— River Tatmagouche } (W.O.)	S	<i>Cumberland</i> .. Wallace
Gairloch	S	<i>Pictou</i> Pictou
Garden Lots	S	<i>Lunenburg</i> . Lunenburg
Gasperaux Lake	S	<i>King's</i> Kentville
Gates Breakwater Shore	S	<i>Annapolis</i> .. Lawrence Town
Garden of Eden (W.O.) ...	S	<i>Pictou</i> New Glasgow
Gaberus (W.O.)	S	<i>Cape Breton</i> . Sydney
Garf Point	S	<i>Lunenburg</i> . Lunenburg
Gillies (Co. Line).....	S	<i>Cape Breton</i> . Sydney
Gilbert's Cove	S	<i>Digby</i> Weymouth
Glen Hide	S	<i>Sydney</i> Antigonish
Glass Bay	S	<i>Cape Breton</i> . Sydney

Bay

Bay

NAME OF PLACE, And whether Village or Settlement, &c.	County	Post Town
Glebe.	C. L. ^d	<i>Lunenburgh</i> . Lunenburgh
Goose River (W.O.)	S	<i>Cumberland</i> . Pugwash
—— Harbor	S	<i>Guysborough.</i> Guysborough
Gold River	S	<i>Lunenburgh</i> . Chester
Goreham's Point	S	<i>Do.</i> . Do.
Gore or Douglas (W.O.)	S	<i>Hants.</i> Newport
Grandance.	S	<i>Richmond</i> .. Plaister Cove
Grinton or Springfield	S	<i>Lunenburgh</i> . Bridgewater
Grayton.	S	<i>Annapolis</i> .. Annapolis
Granville	S	<i>Do.</i> . . Bridgetown
—— Ferry (W.O.)	S	<i>Do.</i> . . Annapolis
Green Hill	S	<i>Pictou</i> Pictou
Grinton	S	<i>Annapolis</i> .. Annapolis
Great Village	V	<i>Colchester</i> .. Londonderry
Green Harbor	H	<i>Shelburne</i> .. Shelburne
Grand River and Lakes(W.O.)	S	<i>Richmond</i> .. St. Peters
Grand Narrows.	S	<i>Cape Breton.</i> Sydney
Greenwich.	S	<i>King's</i> Wolfville
Guysborough Interval	S	<i>Guysborough.</i> Guysborough

NAME OF PLACE, And whether Village or Settlement, &c.	County	Post Town
Gunning Cove	S	<i>Shelburne</i> .. Shelburne
Gulf Shore	S	<i>Cumberland</i> . Wallace
Halfway River	S	<i>Cumberland</i> . Amherst
Hamon's Island	S	<i>Lunenburg</i> . Lunenburg
Harbor Bouche.....	S	<i>Sydney</i> Antigonish
Hartshorn's Grant	S	<i>Do.</i> . Do.
Halowell Grant.....	S	<i>Do.</i> . Do.
Halifax Cove.....	S	<i>Guysborough.</i> Guysborough
Half Island Cove	S	<i>Do.</i> . Do.
Hall's Harbor	S	<i>King's</i> Kentville
Halfway River	S	<i>Cumberland</i> . Parrsborough
Hardwood Hill.....	S	<i>Pictou</i> Pictou
Hagget's Cove	S	<i>Halifax</i> St. Margaret's Bay
Hantsport (W.O.)	S	<i>Hants..</i> ... Windsor

NAME OF PLACE, And whether Village or Settlement, &c.		County	Post Town
Harriet's Field	S	<i>Halifax</i>	Halifax
Hape's Island	S	<i>Lunenburg</i> ..	Lunenburg
Hatchet Lake	S	<i>Halifax</i>	Halifax
Hammond's Plains	S	<i>Do.</i> ..	<i>Do.</i>
Heckman's Island..	S	<i>Lunenburg</i> ..	Lunenburg
Hell Rackets.....	S	<i>Do.</i> ..	<i>Do.</i>
— Gates	S	<i>Do.</i> ..	<i>Do.</i>
Herring Cove	S	<i>Halifax</i>	Halifax
Hebron	S	<i>Yarmouth</i> ..	Yarmouth
Hillsborough S. E. Mabou } (W.O.)	S	<i>Inverness</i> ..	Port Hood
Hillsborough (W.O.)	S	<i>Annapolis</i> ..	Annapolis
Highland Village	S	<i>Colchester</i> ..	Londonderry
Horton, Lower, (W.O.)	V	<i>King's</i>	Wolfville
— Bluff	S	<i>Do.</i> ..	<i>Do.</i>
Hubbert's Cove.....	S	<i>Halifax</i>	St. Margaret's Bay
Huntingdon's Point	S	<i>King's</i>	Kentville
Hunger Cove	S	<i>Halifax</i>	Halifax
Hopewell (W.O.)... ..	S	<i>Pictou</i>	New Glasgow.

NAME OF PLACE, And whether Village or Settlement, &c.		County	Post Town
Indian Harbor (W.O.)	S	<i>Guysborough.</i>	Sherbrooke
—— Point..	S	<i>Lunenburg.</i>	Lunenburg
—— Rear	S	<i>Inverness ..</i>	Plaister Cove
—— Brook	S	<i>Shelburne ..</i>	Shelburne
—— Harbor	S	<i>Halifax</i>	St. Margaret's Bay
Ingram's River	S	<i>Do.</i>	Do.
Inganish (W.O.)	S	<i>Cape Breton.</i>	Sydney
Irish Cove	S	<i>Do.</i>	Do.
Isaac's Harbor	S	<i>Guysborough.</i>	Guysborough
Island Harbor	S	<i>Do</i>	Do.

NAME OF PLACE, And whether Village or Settlement, &c.		County	Post Town
James' River	S	<i>Sydney</i>	Antigonish
Jeddore	S	<i>Halifax</i>	Halifax
Jordan Bay	H	<i>Shelburne</i> ..	Shelburne
Jordan Falls	R	<i>Do.</i> ..	<i>Do.</i>
Judique (W.O.)	S	<i>Inverness</i> ..	Plaister Cove
Kennedy's Creek	S	<i>Kings</i>	Kentville
Kempt	S	<i>Queen's</i>	Liverpool
Kennetcook	R	<i>Hants</i>	Newport
Kempt Town	S	<i>Colchester</i> ..	Truro
Kemptville	S	<i>Yarmouth</i> ..	Yarmouth
Kennedy's Island	S	<i>Halifax</i>	Halifax
Kingsburgh	S	<i>Lunenburg</i> ..	Lunenburg
Knoydart	S	<i>Pictou</i>	New Glasgow

NAME OF PLACE, And whether Village or Settlement, &c.	S	County	Post Town
Lakelands	S	Cumberland	Parrsborough
Lake Ainslie (W.O.)	S	Inverness	Plaister Cove
L'Ardoise (W.O.)	S	Richmond	St. Peter's
Lake Lune	S	Halifax	Halifax
Lawrence Town	S	Do.	Do.
Le Have (Cape)	S	Lunenburg	Lunenburg
———(Ferry)	S	Do.	Do.
Lewis Head	S	Shelburne	Shelburne
Leeche's Creek	S	Cape Breton	Sydney
Liscombe Harbor	S	Guysborough	Antigonish
Little River	S	Sydney	Do.
—— Arichat	S	Richmond	Arichat
—— Harbor	S	Pictou	Durham
—— Lorain	S	Cape Breton	Sydney
Lower South River	S	Sydney	Antigonish
Lochaber Lake	S	Do.	Do.
Loch Broom	S	Pictou	Pictou
Low Point (Light House) ..	S	Cape Breton	Sydney
Long Point	S	Inverness	Plaister Cove

NAME OF PLACE, And whether Village or Settlement, &c.		County	Post Town
Long Island	\$	King's	Wolfville
Lock's Island	\$	Shelburne ..	Shelburne
Loch Lomond	\$	Richmond ..	St. Peter's
Louisburg (W.O.)	\$	Cape Breton ..	Sydney
Lower Shubenacadie	\$	Colchester ..	Shubenacadie
Mabou	S	Inverness ..	Port Hood
—— Bridge (W.O.)	S	Do. . . .	Do.
Macan (W.O.)	S	Cumberland ..	Amherst
Mader's Cove	S	Lunenburg ..	Lunenburg
Marie Joseph	S	Guysborough ..	Guysborough
Macara's Brook	S	Sydney	Antigonish
Malignant Cove (W.O.)	S	Do. . . .	Do.
—— Brook	S	Do. . . .	Do.
Maitland (W.O.)	V	Hants.	Shubenacadie

NAME OF PLACE, And whether Village or Settlement, &c.	County	Post Town
Mahone Bay (W.O.)	S	<i>Lunenburg</i> . Chester
Manchester	S	<i>Guyborough.</i> Guyborough
Marshall Cove, Bay Shore ..	S	<i>Annapolis</i> .. Lawrence Town
Mass Town	S	<i>Colchester</i> .. Londonderry
Martin's River.....	S	<i>Lunenburg</i> . Lunenburg
Maitland	S	<i>Do.</i> . Bridgewater
————	S	<i>Yarmouth</i> .. Yarmouth
Malagawatch.....	S	<i>Richmond</i> .. Plaister Cove
Margaree River.	S	<i>Inverness</i> .. Port Hood
———— Forks	S	<i>Do.</i> . Do.
———— (W O.).....	S	<i>Do.</i> . Do.
Mainaidieu (W.O.).....	S	<i>Cape Breton.</i> Sydney
Malagash	S	<i>Digby.</i> Weymouth
Merigomish (W.O.).....	S	<i>Pictou</i> New Glasgow
McLellan's Mountains.	S	<i>Do.</i> . Do.
McNab's	S	<i>Richmond</i> .. St. Peters
———— Island ..	S	<i>Halifax</i> Halifax
McKay's Point (Big B D'or).	S	<i>Cape Breton.</i> Sydney
Metigham Cove	S	<i>Yarmouth</i> .. Yarmouth

NAME OF PLACE, And whether Village or Settlement, &c.	County	Post Town
Minudie (W.O.)	S	<i>Cumberland</i> . Amherst
Middle South River	S	<i>Sydney</i> Antigonish
Mill Cove	S	<i>Halifax</i> St. Margaret's Bay
— Brook	S	<i>Pictou</i> Pictou
Middle Musquodobit (W.O.)	S	<i>Halifax</i> Gay's River
Melford (W.O.)	S	<i>Guysborough.</i> Guysborough
Mill Village	S	<i>Cumberland.</i> Parrsborough
— Village (W. O.)	S	<i>Queen's</i> Lunenburg
Middle River	S	<i>Inverness</i> . . Plaister Cove
Monk's Head	S	<i>Sydney</i> Antigonish
Moidart (W.O.)	S	<i>Pictou</i> New Glasgow
Monis Town	T	<i>Sydney</i> Antigonish
Montreal	S	<i>Lunenburg</i> . Bridgewater
Moose River	S	<i>Annapolis</i> . . Annapolis
Moser's Island	S	<i>Lunenburg</i> . Lunenburg
Mount Thom.	S	<i>Pictou</i> Durham
— Dalhousie	S	<i>Do.</i> Do.
Molasses Harbor	S	<i>Guysborough.</i> Guysborough
Moose River	S	<i>Cumberland</i> . Parrsborough

NAME OF PLACE, And whether Village or Settlement, &c.	County	Post Town
Mount Wellington S	<i>Cumberland</i>	Parrsborough
— Hermon S	<i>Do.</i>	<i>Do.</i>
— Noah S	<i>Inverness</i>	Plaister Cove
Montagan S	<i>Digby</i>	Weymouth
Molineux's Basin S	<i>Halifax</i>	Halifax
Musquodobit, Upper (W.O.) S	<i>Do.</i>	<i>Do.</i>
— Lower S	<i>Do.</i>	<i>Do.</i>
— Harbor S	<i>Do.</i>	<i>Do.</i>
Murderer's Point S	<i>Lunenburg</i>	Lunenburg
Muggah's Creek S	<i>Cape Breton</i>	Sydney
Murphy's Cove S	<i>Halifax</i>	Halifax
Napan (W.O.) S	<i>Cumberland</i>	Parrsborough
New Germany S	<i>Lunenburg</i>	Lunenburg
— Canaan S	<i>Do.</i>	<i>Do.</i>

NAME OF PLACE, And whether Village or Settlement, &c.	County	Post Town
New Albany	S	<i>Annapolis</i> .. Annapolis
— Larig (W.O.)	S	<i>Pictou</i> Durham
— Antrim	S	<i>Halifax</i> Gay's River
— Canada	S	<i>Guysborough</i> . Guysborough
— Harbor	S	<i>Do.</i> . . . Do.
— Canaan	S	<i>Annapolis</i> .. Lawrence Town
N. E. Harbor (Amherst)	S	<i>Shelburne</i> .. Shelburne
New Cambria	S	<i>Do.</i> . . . Do.
— London	S	<i>Cape Breton</i> . Sydney
— Annan	S	<i>Colchester</i> .. Truro
— Tusket Road	S	<i>Digby</i> Weymouth
Newdiquoddy	S	<i>Halifax</i> Halifax
Nictaux Falls (W.O.)	S	<i>Annapolis</i> .. Lawrence Town
Nine Mile River	S	<i>Halifax</i> Halifax
—————	S	<i>Hants</i> Newport
North West Range	S	<i>Lunenburg</i> . Lunenburg
— Grant	S	<i>Sydney</i> . . . Antigonish
— Lake	S	<i>Do.</i> . . . Do.
— River	S	<i>Do.</i> . . . Do.

NAME OF PLACE, And whether Village or Settlement, &c.		County	Post Town
North Field	S	<i>Lunenburg</i>	Bridgewater
— Range.....	S	<i>Digby</i>	Digby
—	S	<i>Do.</i>	Weymouth
— West Arm (W.O.)...	S	<i>Cape Breton</i>	Sydney
— West Arm	S	<i>Halifax</i>	Halifax
— River	S	<i>Do.</i>	Do.
Noel (W.O.).....	S	<i>Hants</i>	Newport
North Bar (W.O.).....	V	<i>Cape Breton</i>	Sydney
Oak Island	S	<i>Lunenburg</i>	Lunenburg
— Land	S	<i>Do.</i>	Do.
— Mill.....	R	<i>Shelburne</i> ..	Shelburne
Obscontch.....	R	<i>Do.</i>	Do.
Ogdius Pond.....	S	<i>Sydney</i>	Antigonish
Ohio	S	<i>Do.</i>	Do.

NAME OF PLACE, And whether Village or Settlement, &c.		County	Post Town
Ohio (W. Side Le Have River)	S	<i>Lunenburg</i> .	Lunenburg
—	R	<i>Shelburne</i> ..	Shelburne
Old Barns	S	<i>Colchester</i> ..	Truro
Owl's Head	H	<i>Halifax</i>	Halifax
Oyster Harbor	H	<i>Guysborough.</i>	Guysborough
— Pond	S	<i>Sydney</i>	Antigonish
Paradise.....	S	<i>Annapolis</i> ..	Lawrence Town
Peninsular, 1st and 2nd	S	<i>Lunenburg</i> ..	Lunenburg
Petit De Grat	S	<i>Richmond</i> ..	Arichat
Perot	S	<i>Annapolis</i> ..	Annapolis
—	S	<i>King's</i>	Kentville
Peggy's Cove	S	<i>Halifax</i>	St. Margaret's Bay
Pennant.....	S	<i>Do.</i> .	St. Margaret's Bay
Petit Riviere.....	S	<i>Lunenburg</i> .	Lunenburg

NAME OF PLACE, And whether Village or Settlement, &c.		County	Post Town
Piper's Cove	S	<i>Cape Breton</i>	Sydney
Pleasant River	S	<i>Queen's</i>	Bridgewater
—— Valley.....	S	<i>King's</i>	Kentville
Portket	S	<i>Sydney</i>	Antigonish
Port Jolly	S	<i>Queen's</i>	Liverpool
—— Mutton	S	<i>Do.</i>	<i>Do.</i>
—— Medway (W.O.).....	S	<i>Do.</i>	<i>Do.</i>
Portapique Mountains	S	<i>Colchester</i> ..	Londonderry
—— Plains.....	S	<i>Do.</i>	<i>Do.</i>
—— Village (W.O.) ..	V	<i>Do.</i>	<i>Do.</i>
—— Cross Roads	S	<i>Do.</i>	<i>Do.</i>
Port Mills	S	<i>Shelburne</i> ..	Shelburne
—— Le Bear	H	<i>Do.</i>	<i>Do.</i>
Point Edward	S	<i>Cape Breton</i>	Sydney
Porter's Lake.....	S	<i>Halifax</i>	Halifax
Portpisquie	H	<i>Do.</i>	<i>Do.</i>
Pope's Harbor	H	<i>Do.</i>	<i>Do.</i>
—— Bay.....	S	<i>Do.</i>	<i>Do.</i>
Point Pleasant	S	<i>Do.</i>	<i>Do.</i>

NAME OF PLACE, And whether Village or Settlement, &c.		County	Post Town
Portuguese Cove	S	Halifax	Halifax
Preston	S	Do. . . .	Do.
Prospect	S	Do. . . .	Do.
Pubnico	S	Yarmouth . .	Yarmouth
Purcell's Cove	S	Halifax	Halifax
Putsey's Cove	S	Do. . . .	Do.
Rackett's Island	S	Lunenburg .	Lunenburg
Rawdon (W.O.)	S	Hants.	Newport
Ratchford River	S	Cumberland .	Parrsborough
Ragged Islands.	S	Shelburne . .	Shelburne
Red Islands	S	Cape Breton .	St. Peter's
—Head	S	Shelburne . .	Shelburne
River Philip (W.O.)	S	Cumberland .	Amherst.
—Herbert	S	Do. . . .	Do

NAME OF PLACE, And whether Village or Settlement, &c.		County	Post Town
River Inhabitants (W.O.) ..	S	<i>Inverness</i> ..	Plaister Cove
——River Denis	S	<i>Do.</i> ..	Do.
——John (W.O.)	S	<i>Pictou</i>	Pictou
——John, E. & W. Branch	S	<i>Do.</i> ..	Do.
Richmond	V	<i>Halifax</i>	Halifax
Roger's Hill (W.O.)	S	<i>Pictou</i>	Pictou
Rose Bay	S	<i>Lunenburg</i> ..	Lunenburg
Roseway	H	<i>Shelburne</i> ..	Shelburne
Round Bay	H	<i>Do.</i> ..	Do.
River Bourgeois (W.O.)	S	<i>Richmond</i> ..	St. Peter's
Salt Springs	S	<i>Guysborough.</i>	Antigonish
Salmon River..	S	<i>Do.</i> ..	Guysborough
——	S	<i>Colchester</i> ..	Truro
—— Lakes	S	<i>Guysborough.</i>	Guysborough

NAME OF PLACE, And whether Village or Settlement, &c.		County	Post Town
Sand Point	S	<i>Guysborough.</i>	Guysborough
— — River	S	<i>Cumberland .</i>	Parrsborough
Sandy Point	H	<i>Shelburne ..</i>	Shelburne
Sable River	S	<i>Do.</i>	Do.
Salmon River	S	<i>Digby.</i>	Weymouth
Sambro'	S	<i>Halifax</i>	Halifax
Sackville	S	<i>Do.</i>	Do.
Scotch Bay	S	<i>King's</i>	Kentville
———Hill	S	<i>Pictou</i>	Pictou
Sherbroke	S	<i>Lunenburgh .</i>	Chester
Sherwood	S	<i>Do.</i>	Do.
Ship Harbor (W.O.) .. .	S	<i>Inverness ..</i>	Plaister Cove
————	S	<i>Halifax</i>	Halifax
Six Mile Brook	S	<i>Pictou</i>	Durham
Skinnimacash	S	<i>Cumberland .</i>	Amherst
Sheet Harbor	S	<i>Halifax</i>	Halifax
Smelt Cove	S	<i>Do.</i>	Do.
South Lake	S	<i>Sydney</i>	Antigonish
——— Range	S	<i>Digby.</i>	Digby

NAME OF PLACE, And whether Village or Settlement, &c.		County	Post Town
South Bar, C. B.	S	<i>Cape Breton</i> .	Sydney
—— East Passage	S	<i>Halifax</i>	Halifax
Spencer's Island	S	<i>Cumberland</i> .	Parrsborough
Springville (W.O.)	S	<i>Pictou</i>	New Glasgow
Spry Harbor	S	<i>Halifax</i>	Halifax
Spryfield	S	<i>Do.</i> .	<i>Do.</i>
St. Andrew's (W.O.)	S	<i>Sydney</i>	Antigonish
Still Waters	S	<i>Guysborough.</i>	<i>Do.</i>
St. Mary's Bay.....	S	<i>Digby</i>	Digby
—— River	S	<i>Guysborough.</i>	Sherbrooke
Stewiacke Lower	S	<i>Colchester</i> ..	Shubenacadie
—— Upper (W.O.).....	S	<i>Do.</i> .	Gay's River
—— Middle	S	<i>Do</i> .	<i>Do.</i>
St. Andrew's Point	S	<i>Guysborough.</i>	Guysborough
St. George's Channel	S	<i>Cape Breton</i> .	Sydney
St. Patrick's Channel	S	<i>Inverness</i> ..	Plaister Cove
St. Esprit	S	<i>Richmond</i> ..	St. Peter's
St. Anne's (W.O.)	S	<i>Cape Breton</i> .	Sydney
St. Croix	S	<i>Hants</i>	Windsor

NAME OF PLACE, And whether Village or Settlement, &c.		County	Post Town
St. Mary's Bay Church	S	Digby	Digby
——— Chapel	S	Do.	Do.
Sutherland River	S	Pictou	Pictou
——— Harbor	S	Halifax	Halifax
Swan Creek	S	Cumberland	Parrsborough
Sydney Mines (W.O.)	V	Cape Breton	Sydney
Tancook Island	S	Lunenburg	Chester
——— Big and Little	S	Do.	Lunenburg
Tatmagouché (W.O.)	V	Colchester	Londonderry
Tangier	S	Halifax	Halifax
Taylor's Head	S	Do.	Do.
Tenecape	S	Hants	Newport
Three Sisters	S	Cumberland	Parrsborough
Three Fathom Harbor	S	Halifax	Halifax

NAME OF PLACE, And whether Village or Settlement, &c.		County	Post Town
Torbay	S	<i>Guysborough.</i>	Guysborough
Town Plot.....	S	<i>King's</i>	Kentville
Toney River	S	<i>Pictou</i>	Pictou
Tracadie (W.O.)	S	<i>Sydney</i>	Antigonish
——Little	S	<i>Do.</i>	<i>Do.</i>
Tusket (W.O.).....	V	<i>Yarmouth</i> ..	Yarmouth
Upper South River	S	<i>Sydney</i>	Antigonish
——Clyde.....	R	<i>Shelburne</i> ..	Shelburne
——and Lower South	S	<i>Lunenburg</i> .	Lunenburg

NAME OF PLACE, And whether Village or Settlement, &c.	County	Post Town
Victoria.....	S	<i>Cumberland</i> . Pugwash
Wallace River (W.O.).....	S	<i>Cumberland</i> . Londonderry
Walton or Kempt (W.O.) ..	T	<i>Hants</i> Newport
Washabetchett	S	<i>Cape Breton</i> . Sydney
West River (Pictou)	S	<i>Pictou</i> Pictou
— (St. Mary's).....	S	<i>Guysborough</i> . Antigonish
West Branch (Le Have).....	S	<i>Lunenburg</i> . Lunenburg
Westchester (W.O.).....	S	<i>Cumberland</i> . Londonderry
Wentworth Grant.....	S	<i>Pictou</i> New Glasgow
West Branch, E. River, (Pictou)	S	<i>Do.</i> . Pictou
— Brook	S	<i>Cumberland</i> . Parrsborough
— Bay, or St. George's) Channel	S	<i>Inverness</i> .. Plaister Cove
Wentworth.....	S	<i>Hants</i> Windsor
West River.....	S	<i>Halifax</i> Halifax

NAME OF PLACE, And whether Village or Settlement, &c.		County.	Post Town.
West Port	S	Digby.....	Digby
— River.....	S	Guysborough.	Antigonish
White Head River	S	Do.	Guysborough
Wilmot (W.O.)	T	King's	Kentville
Wine Harbor.....	S	Guysborough.	Sherbrooke
Winter's Island	S	Lunenburg .	Lunenburg
White's Creek	S	Cape Breton.	Sydney
Winchelsea Harbor	S	Halifax	Halifax
White Islands	S	Do.	Do.
Wolf Island	S	Lunenburg .	Lunenburg
Woodland	S	Cumberland .	Parrsborough
Wycocomah (W.O.)	S	Inverness ..	Plaister Cove
Young's Island.....	S	Lunenburg .	Lunenburg

