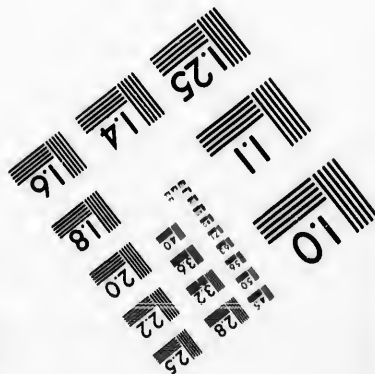
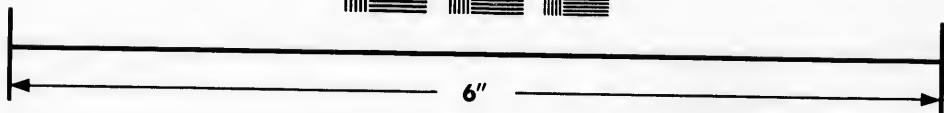
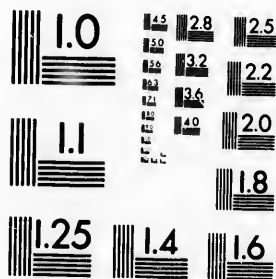


**IMAGE EVALUATION
TEST TARGET (MT-3)**



**Photographic
Sciences
Corporation**

23 WEST MAIN STREET
WEBSTER, N.Y. 14580
(716) 872-4503

0
11
13
15
16
18
20
22
25

**CIHM
Microfiche
Series
(Monographs)**

**ICMH
Collection de
microfiches
(monographies)**



Canadian Institute for Historical Microreproductions / Institut canadien de microreproductions historiques

11
13
15
16
18
20
22
25

© 1993

Technical and Bibliographic Notes / Notes techniques et bibliographiques

The Institute has attempted to obtain the best original copy available for filming. Features of this copy which may be bibliographically unique, which may alter any of the images in the reproduction, or which may significantly change the usual method of filming, are checked below.

L'Institut a microfilmé le meilleur exemplaire qu'il lui a été possible de se procurer. Les détails de cet exemplaire qui sont peut-être uniques du point de vue bibliographique, qui peuvent modifier une image reproduite, ou qui peuvent exiger une modification dans la méthode normale de filmage sont indiqués ci-dessous.

Coloured covers/
Couverture de couleur

Coloured pages/
Pages de couleur

Covers damaged/
Couverture endommagée

Pages damaged/
Pages endommagées

Covers restored and/or laminated/
Couverture restaurée et/ou pelliculée

Pages restored and/or laminated/
Pages restaurées et/ou pelliculées

Cover title missing/
Le titre de couverture manque

Pages discoloured, stained or foxed/
Pages décolorées, tachetées ou piquées

Coloured maps/
Cartes géographiques en couleur

Pages detached/
Pages détachées

Coloured ink (i.e. other than blue or black)/
Encre de couleur (i.e. autre que bleue ou noire)

Showthrough/
Transparence

Coloured plates and/or illustrations/
Planches et/ou illustrations en couleur

Quality of print varies/
Qualité inégale de l'impression

Bound with other material/
Relié avec d'autres documents

Continuous pagination/
Pagination continue

Tight binding may cause shadows or distortion along interior margin/
La reliure serrée peut causer de l'ombre ou de la distorsion le long de la marge intérieure

Includes index(es)/
Comprend un (des) index

Blank leaves added during restoration may appear within the text. Whenever possible, these have been omitted from filming/
Il se peut que certaines pages blanches ajoutées lors d'une restauration apparaissent dans le texte, mais, lorsque cela était possible, ces pages n'ont pas été filmées.

Title on header taken from: /
Le titre de l'en-tête provient:

Title page of issue/
Page de titre de la livraison

Caption of issue/
Titre de départ de la livraison

Masthead/
Générique (périodiques) de la livraison

Additional comments: /
Commentaires supplémentaires:

This item is filmed at the reduction ratio checked below /
Ce document est filmé au taux de réduction indiqué ci-dessous.

10X	14X	18X	22X	26X	30X
<input type="checkbox"/>	<input type="checkbox"/>	<input type="checkbox"/>	<input checked="" type="checkbox"/>	<input type="checkbox"/>	<input type="checkbox"/>
12X	16X	20X	24X	28X	32X

The copy filmed here has been reproduced thanks to the generosity of:

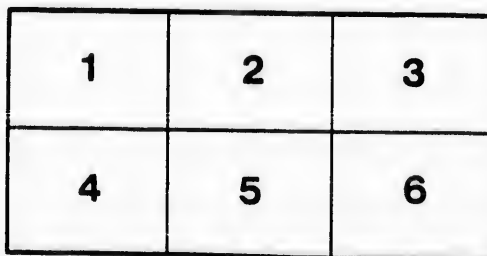
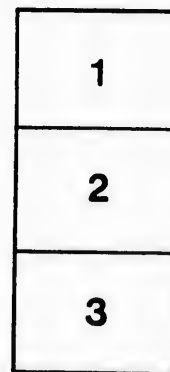
Archives nationales de Québec,
Québec, Québec.

The images appearing here are the best quality possible considering the condition and legibility of the original copy and in keeping with the filming contract specifications.

Original copies in printed paper covers are filmed beginning with the front cover and ending on the last page with a printed or illustrated impression, or the back cover when appropriate. All other original copies are filmed beginning on the first page with a printed or illustrated impression, and ending on the last page with a printed or illustrated impression.

The last recorded frame on each microfiche shall contain the symbol \rightarrow (meaning "CONTINUED"), or the symbol ∇ (meaning "END"), whichever applies.

Maps, plates, charts, etc., may be filmed at different reduction ratios. Those too large to be entirely included in one exposure are filmed beginning in the upper left hand corner, left to right and top to bottom, as many frames as required. The following diagrams illustrate the method:



L'exemplaire filmé fut reproduit grâce à la générosité de:

Archives nationales de Québec,
Québec, Québec.

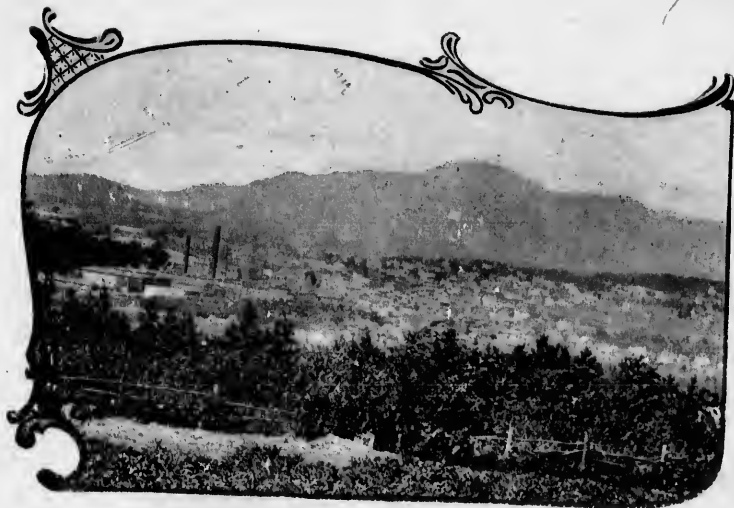
Les images suivantes ont été reproduites avec le plus grand soin, compte tenu de la condition et de la netteté de l'exemplaire filmé, et en conformité avec les conditions du contrat de filmage.

Les exemplaires originaux dont la couverture en papier est imprimée sont filmés en commençant par le premier plat et en terminant soit par la dernière page qui comporte une empreinte d'impression ou d'illustration, soit par le second plat, selon le cas. Tous les autres exemplaires originaux sont filmés en commençant par la première page qui comporte une empreinte d'impression ou d'illustration et en terminant par la dernière page qui comporte une telle empreinte.

Un des symboles suivants apparaîtra sur la dernière image de chaque microfiche, selon le cas: le symbole \rightarrow signifie "A SUIVRE", le symbole ∇ signifie "FIN".

Les cartes, planches, tableaux, etc., peuvent être filmés à des taux de réduction différents. Lorsque le document est trop grand pour être reproduit en un seul cliché, il est filmé à partir de l'angle supérieur gauche, de gauche à droite, et de haut en bas, en prenant le nombre d'images nécessaire. Les diagrammes suivants illustrent la méthode.

Souvenir
of
MAGOG



917.147

917.147



Magog

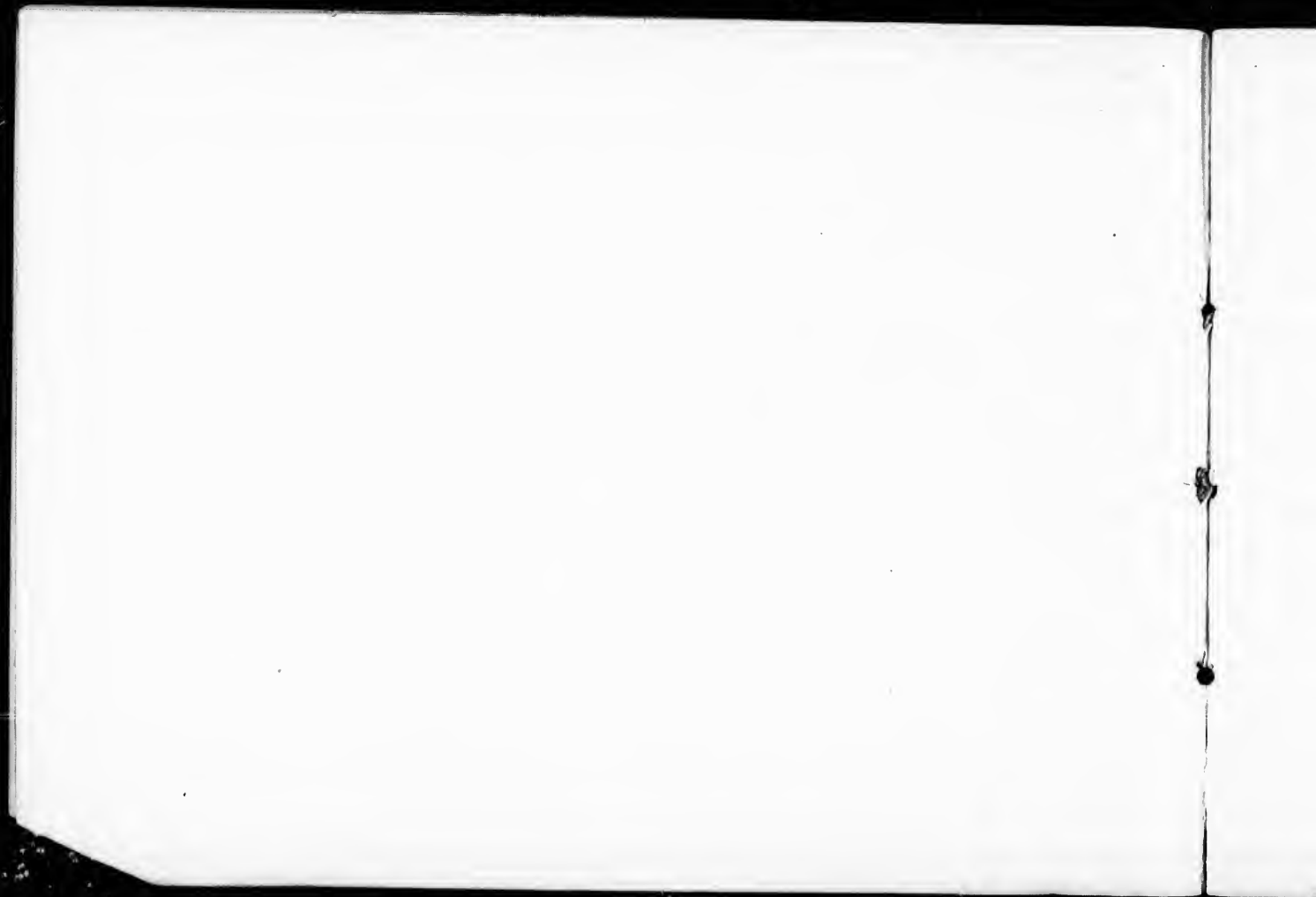
and Vicinity.

Published by

W. W. CHALMERS, M.D.

Magog, P.Q., Canada

1899



Magog



FROM the earliest times Lake Memphremagog and its outlet was one of the important highways of communication between the settlements of the St. Lawrence and those of New England. The first record of this route being travelled is in 1692, by a band of Iroquois Indians on their way to attack the Abenquais; again by Rogers and his rangers in 1759, on their return from burning the Mission village of St. Francis.

Ebenezer Hovey, with his family, settled a few miles from the outlet of the lake in 1793, and about the same time the early Bolton settlers erected the first mill, and built the first dam across the river, if we except what is called the old Indian dam, constructed presumably to afford assistance in the capture of fish. In 1796 or '97, Ralph Merry, a native of Lynn, Mass., purchased the mills, and in 1799, March 20th, came in from St. Johnsbury, Vt., with his family and thus became the first permanent settler of whom we have any account.

During the first quarter of the present century many of the older families came in from various parts of the New England States, forming a hamlet know as the "Outlet." It is interesting to note that a "forge" was in operation in 1809, on the shore of the lake, and that good iron was produced. There were no roads to speak of, and it was not until 1816 that the first wagon went from Magog Outlet to Frost Village, by way of the north side of Orford Pond. Before the bridge was built the river was crossed by fording at Merry Point. Ralph Merry, Jr., is entitled to the honor of teaching the first school in the year 1818, and in 1824 the red school house was built on the site now occupied by the Pepin block.

In 1820, John Wetherbee erected the first store, on the river bank, near the north end of the present bridge, and was probably the first postmaster; the first mail passed from Stanstead to Montreal, via Magog, on horseback, May 2nd, 1823. About this time also several industries were in operation—a saw mill, grist mill, carding and fulling mill and tannery being among the number.



In October, 1822, after a visit from the Grand Voyer, the official who in those days had charge of the building of new roads, the present Main Street was laid out as far as the above mentioned mills, a point below the Central Hotel.

Prior to 1855 the seven western ranges of Hatley and the nine eastern ranges of Bolton were united to form the new township of Magog, and in the month of August of that year the first council meeting was held, Samuel Hoyt, Jr., being Mayor, and the late G. O. Somers, M.D., being Secretary-Treasurer. The population of the "Outlet" at this time was about two hundred. In 1888, Magog village was set off as a separate municipality, A. H. Moore, Esq., being the first Mayor, and Ls. A. Audet, N. P., Secretary-Treasurer, and in 1890 the village was chartered as a town, the same officials retaining office.

In 1877-78 the Waterloo and Magog Railroad was built, and having been purchased by the Canadian Pacific, it was reconstructed and operated by that Company in 1888.

In 1882 the Textile Mills for the manufacture of cotton and print goods were built, and from this time the development of this progressive town of to-day can be dated. In 1889 these mills were transferred to the Dominion Cotton Mills Co., by whom they are still successfully operated, employment being given to about 900 hands.

Magog has now a population of about 3,300, and is considered one of the most thriving towns in the Province. Situated picturesquely at the foot of the famed Lake Memphremagog, daily communication by steamer is established with Newport, Vt., and being on the main line of the C.P.R., there are several daily trains to Montreal and Sherbrooke. There are four churches, the Roman Catholic, Anglican, Methodist and Union, and since the fire in 1897 many fine buildings, containing up-to-date stores and offices, have been erected. In March, 1895, a branch of the Eastern Townships Bank was opened, and at the beginning of the same year a weekly newspaper, the "Enterprise," was first issued.

A supply of water for domestic purposes has been provided by a private company since 1891, and in December, 1897, the town corporation inaugurated an excellent electric light system.

W. W. CHALMERS, M.D., Magog, Que.

Photos by Q. A. Randall, Magog, Que.
Plates by the Grip Printing and Publishing Co, Limited, Toronto, Ont.
Compiled by W. W. Chalmers, M.D., Magog, Que.



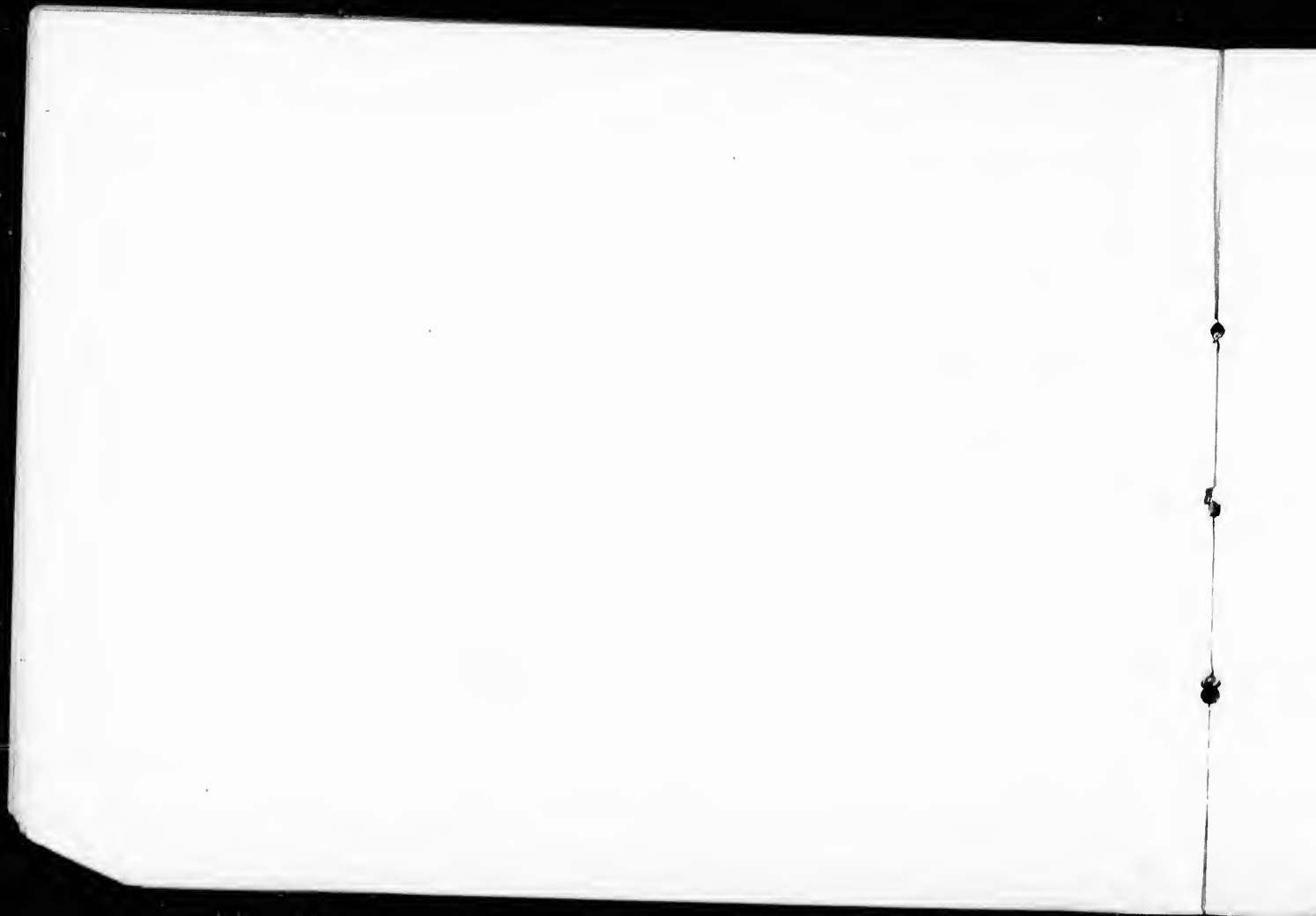


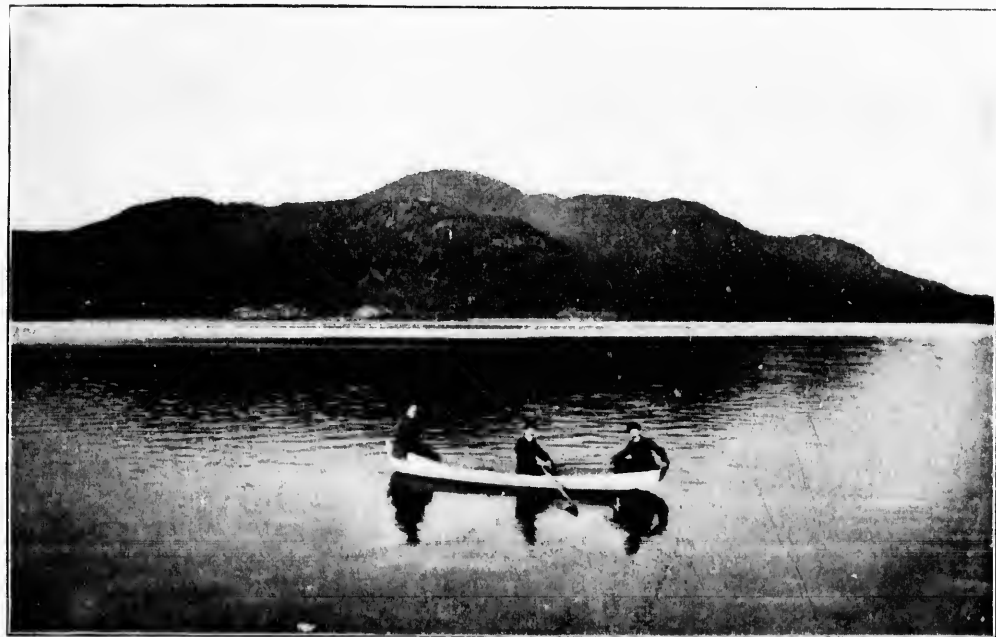
BIRD'S-EYE VIEW OF LAKE, TOWN AND MOUNT ORFORD.



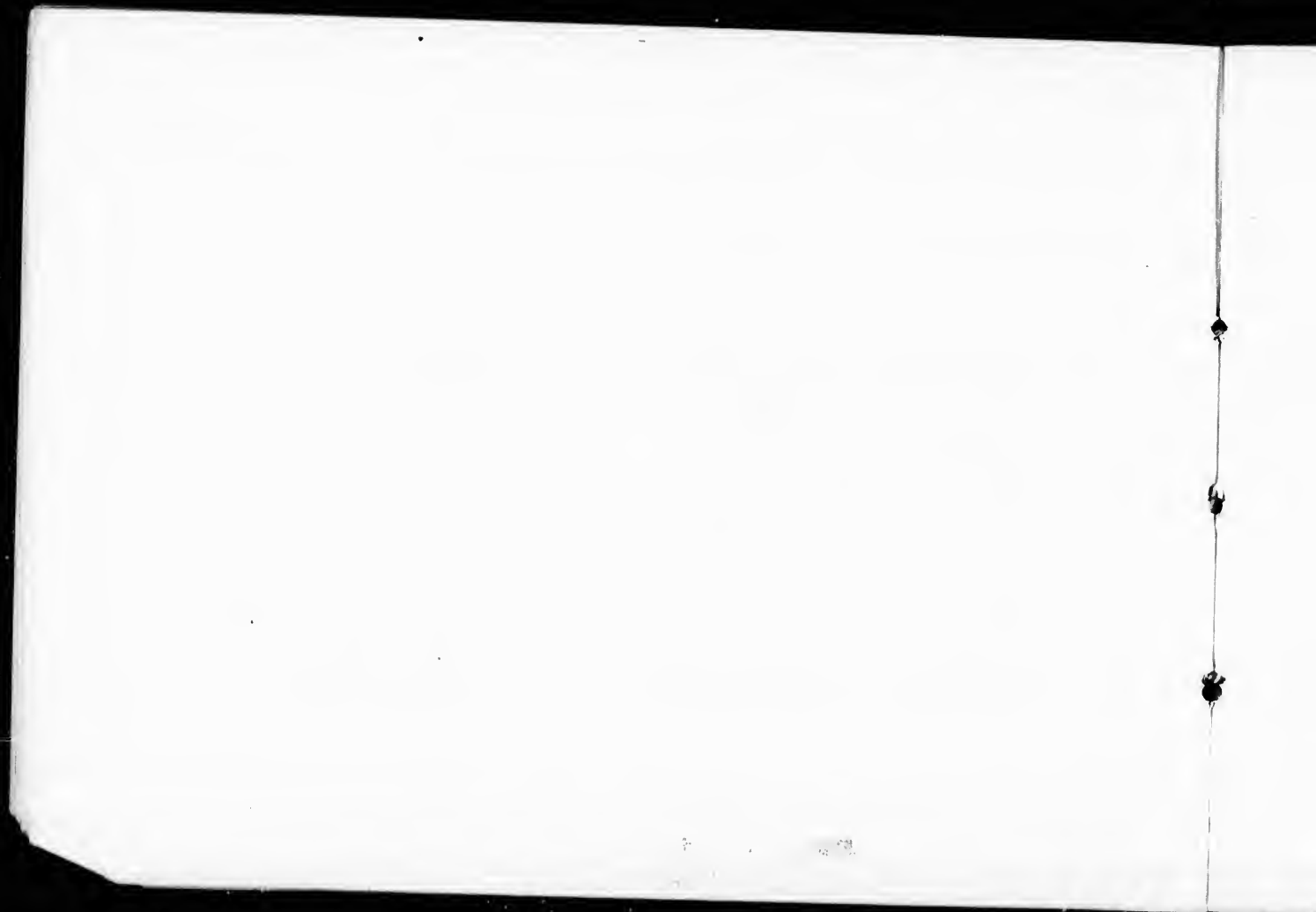


MAIN STREET, LOOKING EAST.





ORFORD MOUNTAIN AND LAKE.





1. Fairview.

3. Park.

HOTELS.

2. Central.

4. Battles.





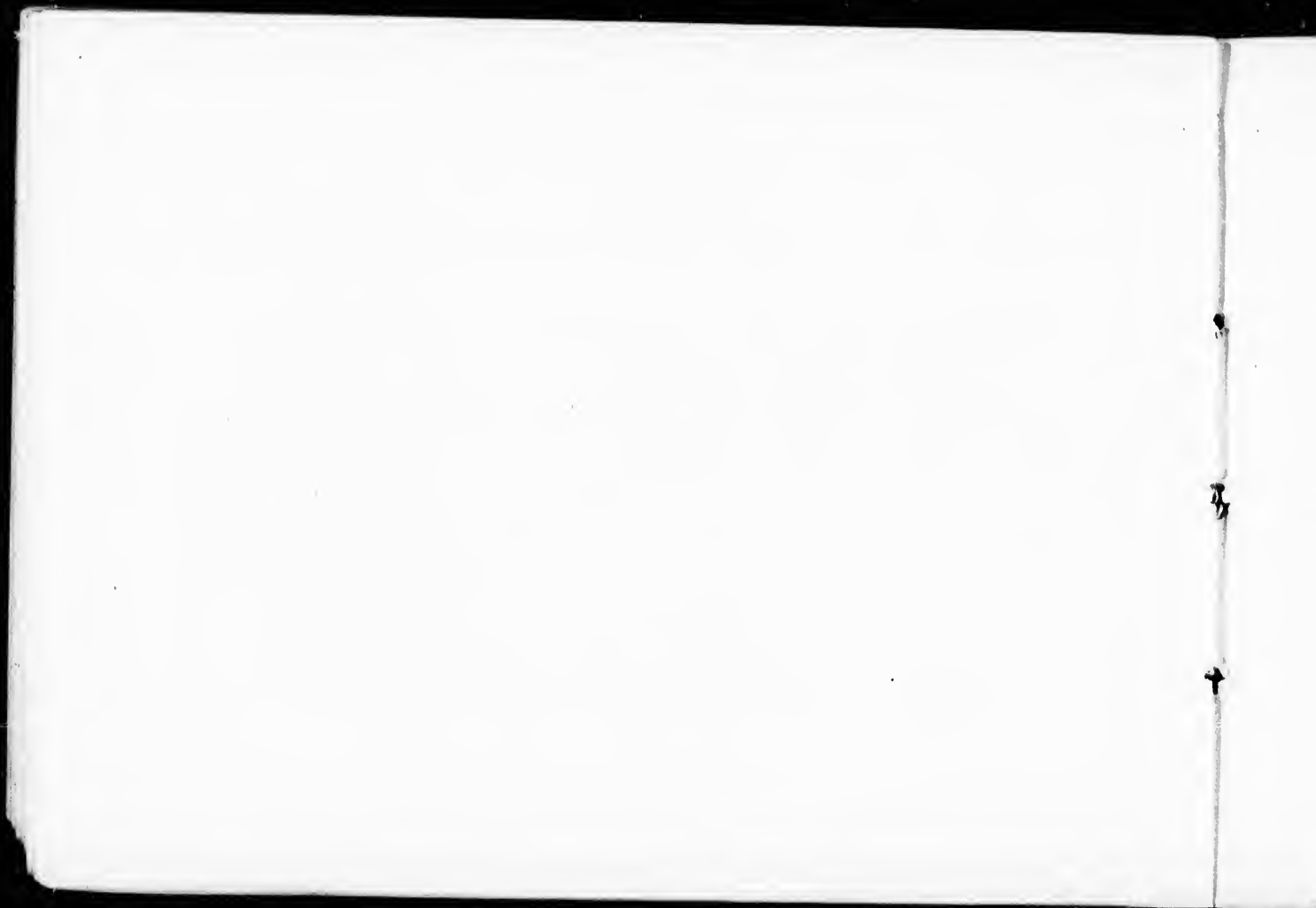
RESIDENCES.

2. "Sunnyside," Mrs. E. R. Johnson. 1. Eastern Township Bank. 3. William Jamieson, Esq., "Island Bank."
4. "Edgemere," M. L. Hersey, Esq. 5. Mrs. J. B. Hall, "Sleima Lodge."

1871



OWL'S HEAD AND LAKE MEMPHREMAGOG.

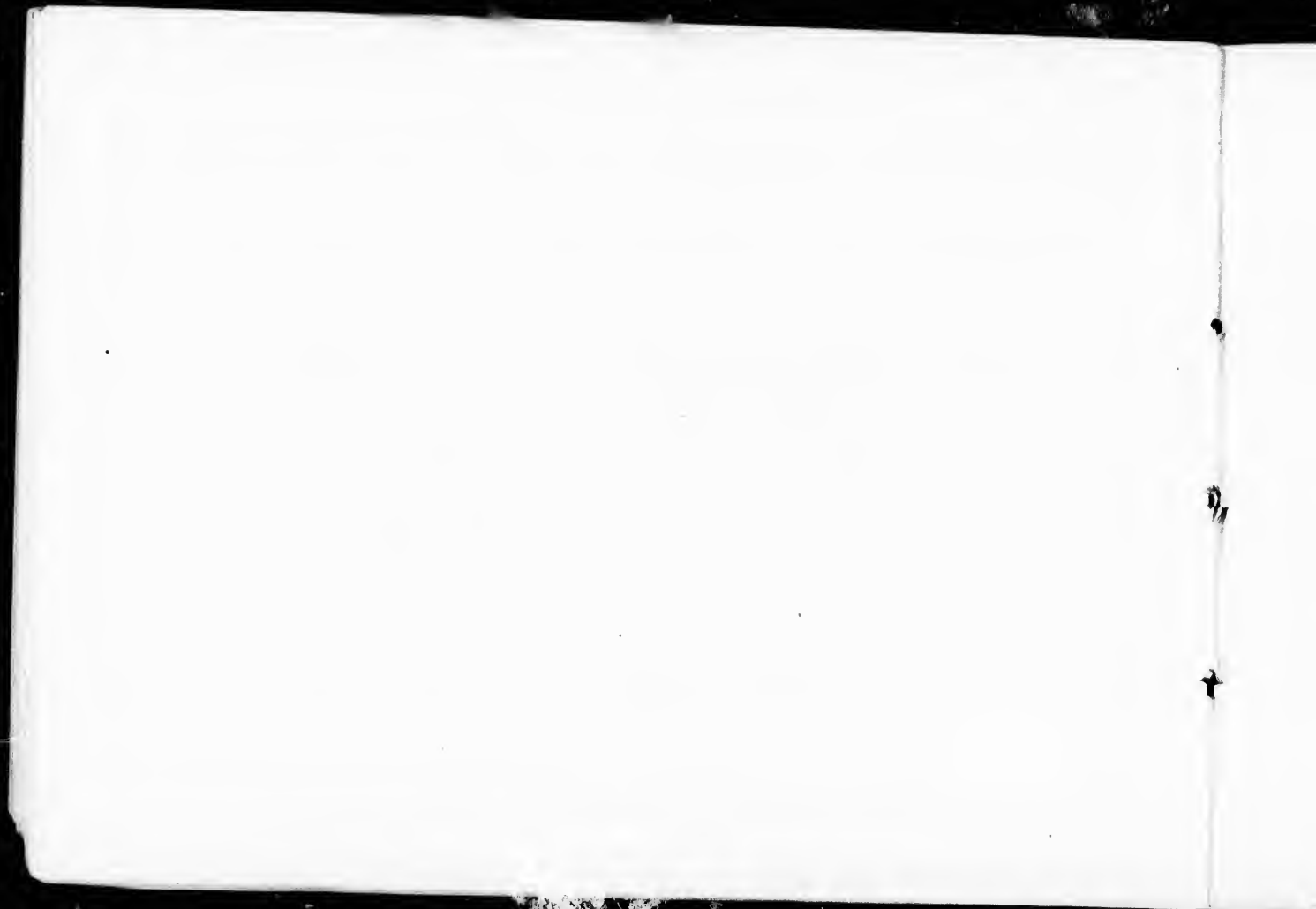


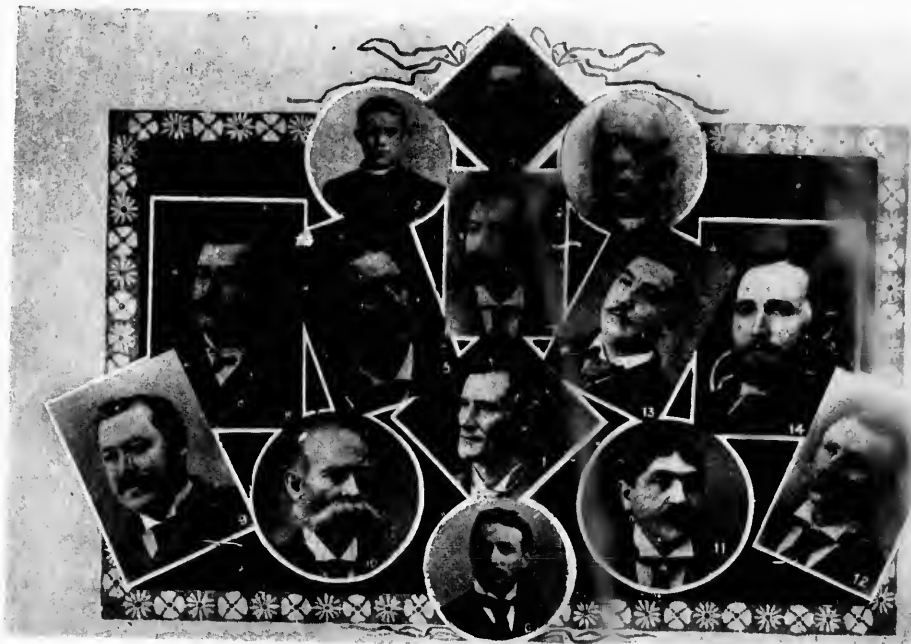


CHURCHES.

1. Old Union.
3. Roman Catholic.

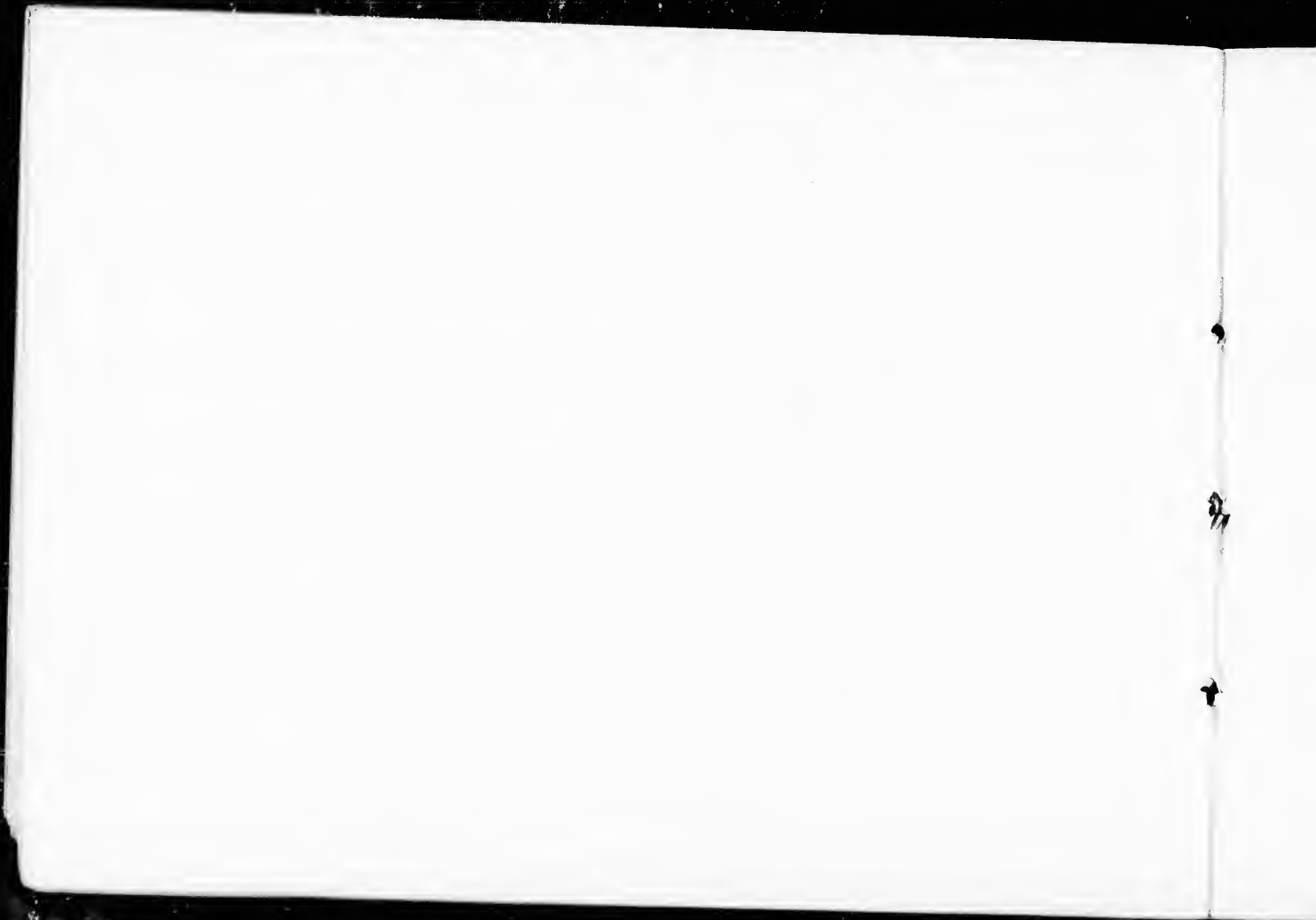
2. Anglican.
4. Methodist.

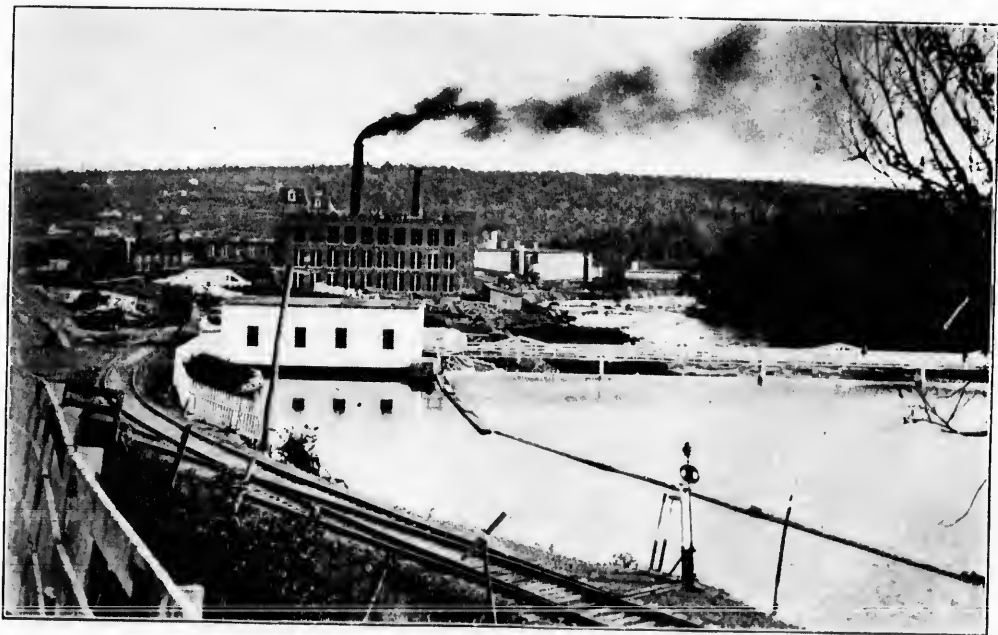




TOWN COUNCIL AND CLERGYMEN.

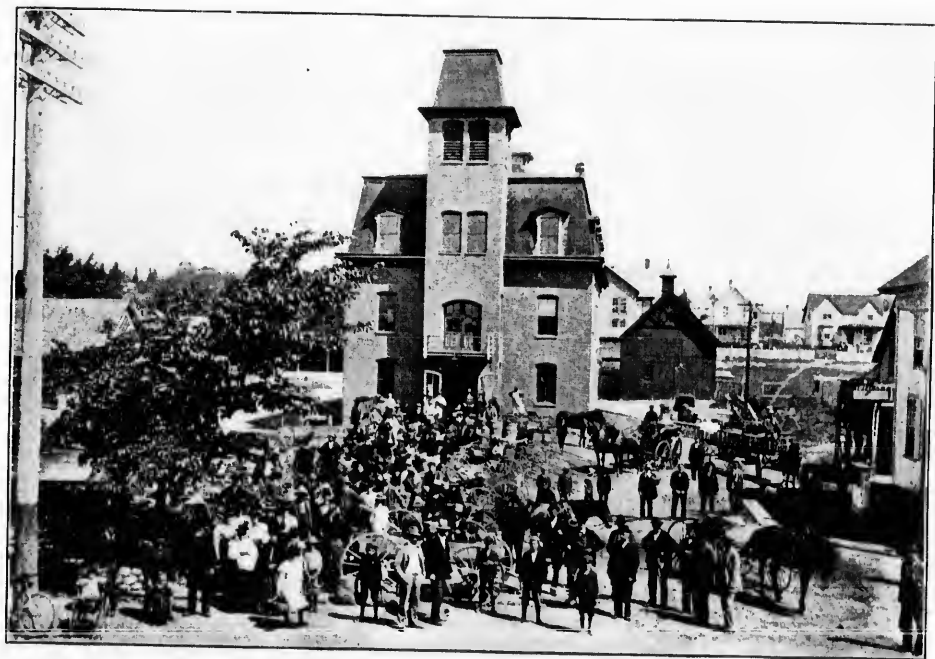
- | | | | | |
|-----------------------------|------------------------------|-------------------------|--------------------------|-------------------|
| 1. E. D. Smith, Postmaster. | 2. Rev. R. W. E. Wright. | 3. Rev. C. E. Milete. | 4. Rev. R. Corrigan. | 5. E. P. Olivier. |
| 6. W. T. Whitehead. | 7. W. W. Chalmers, Mayor. | 8. B. E. Goyette, Coun. | 9. E. H. Guilbert, Coun. | |
| 10. G. E. Manson, Coun. | 11. A. M. Dupuis, Coun. | 12. A. D. Martin, Coun. | | |
| 13. N. C. Gendron, Coun. | 14. S. A. Audet, Sec.-Treas. | | | |





DOMINION COTTON MILLS.



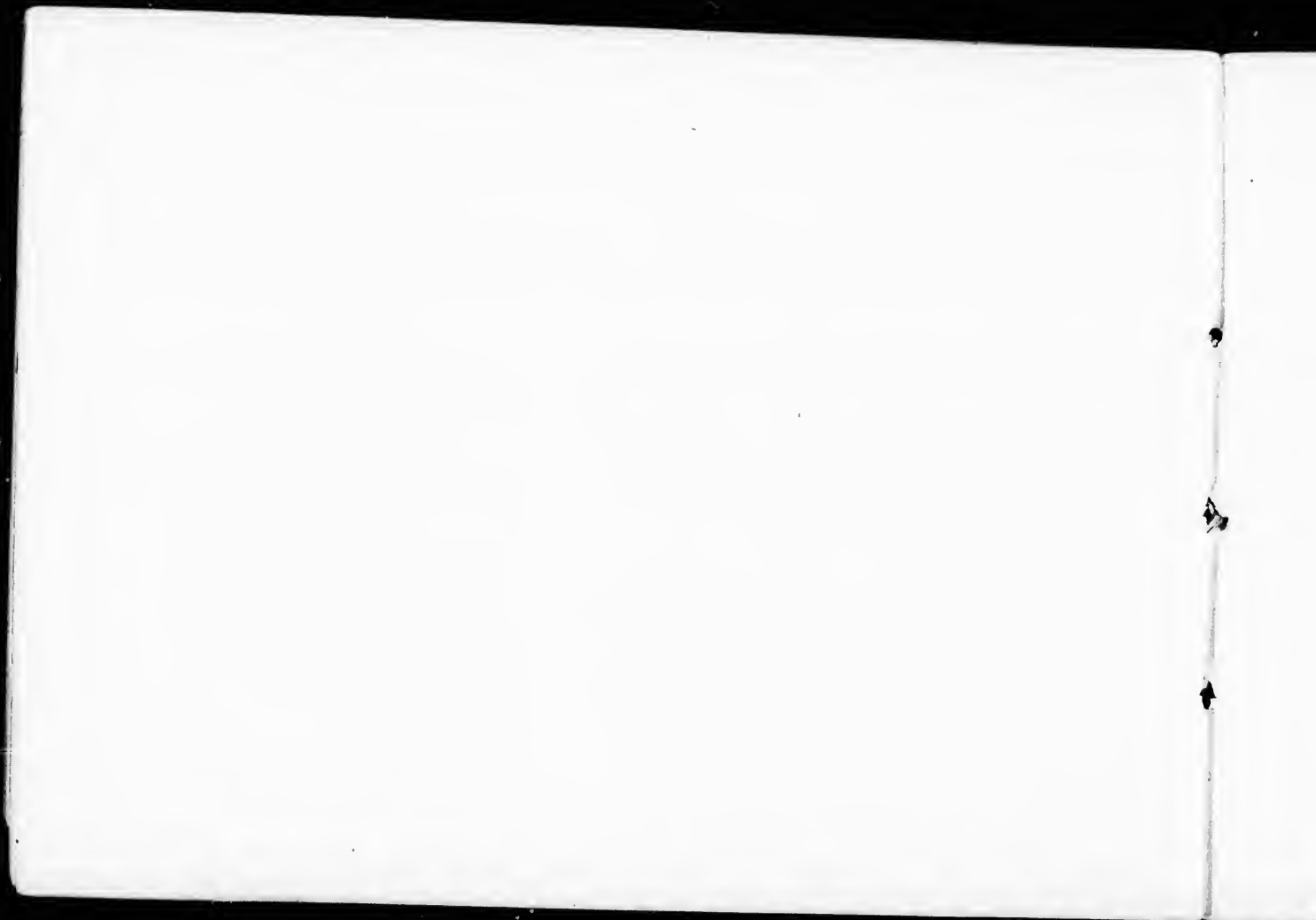


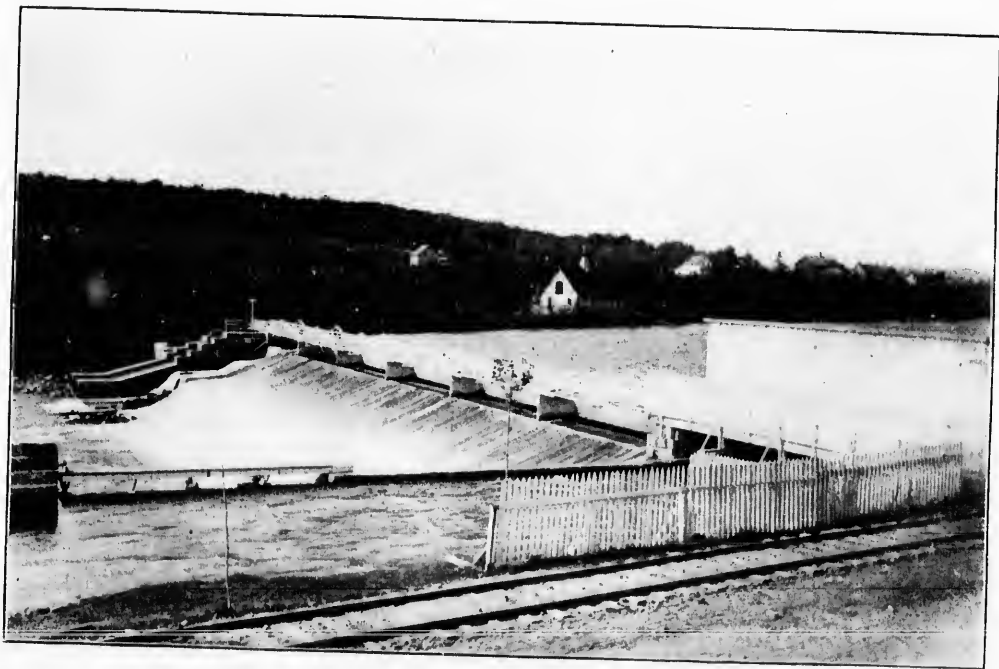
TOWN HALL AND MARKET.





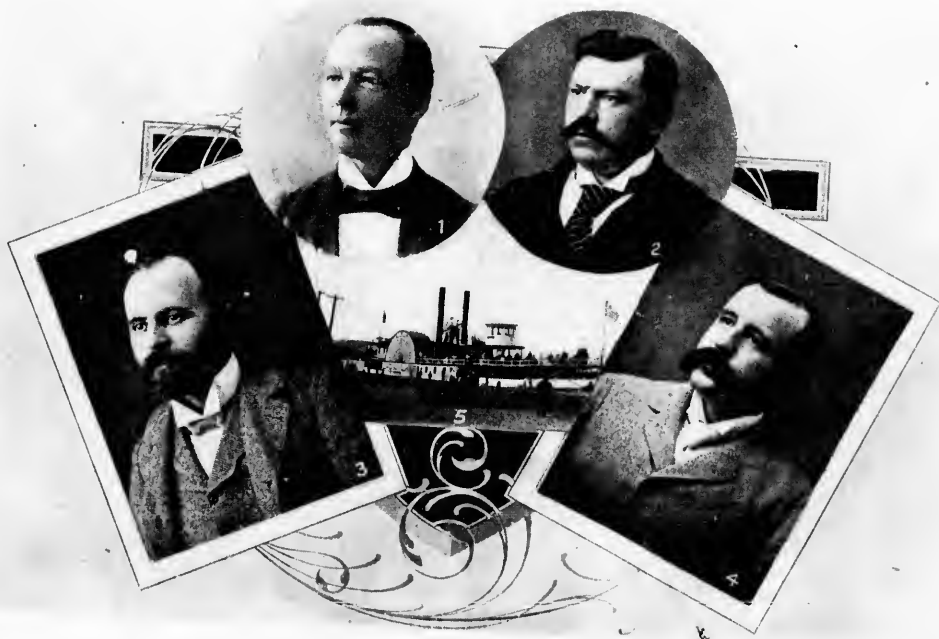
OUTLET OF LAKE MEMPHREMAGOG.





THE COTTON MILLS DAM AND GOVERNMENT FISH HATCHERIES.





BOARD OF TRADE.

1. A. H. Moore, M.P., President.
3. J. R. Wilcox, Secretary.

5. Steamer "Lady of the Lake."

2. A. G. H. Beique, M.D., Vice-President.
4. A. H. Garneau, Treasurer

