

**CIHM
Microfiche
Series
(Monographs)**

**ICMH
Collection de
microfiches
(monographies)**



Canadian Institute for Historical Microreproductions / Institut canadien de microreproductions historiques

© 1997

Technical and Bibliographic Notes / Notes techniques et bibliographiques

The Institute has attempted to obtain the best original copy available for filming. Features of this copy which may be bibliographically unique, which may alter any of the images in the reproduction, or which may significantly change the usual method of filming are checked below.

- Coloured covers / Couverture de couleur
- Covers damaged / Couverture endommagée
- Covers restored and/or laminated / Couverture restaurée et/ou pelliculée
- Cover title missing / Le titre de couverture manque
- Coloured maps / Cartes géographiques en couleur
- Coloured ink (i.e. other than blue or black) / Encre de couleur (i.e. autre que bleue ou noire)
- Coloured plates and/or illustrations / Planches et/ou illustrations en couleur
- Bound with other material / Relié avec d'autres documents
- Only edition available / Seule édition disponible
- Tight binding may cause shadows or distortion along interior margin / La reliure serrée peut causer de l'ombre ou de la distorsion le long de la marge intérieure.
- Blank leaves added during restorations may appear within the text. Whenever possible, these have been omitted from filming / Il se peut que certaines pages blanches ajoutées lors d'une restauration apparaissent dans le texte, mais, lorsque cela était possible, ces pages n'ont pas été filmées.
- Additional comments / Commentaires supplémentaires:

L'Institut a microfilmé le meilleur exemplaire qu'il lui a été possible de se procurer. Les détails de cet exemplaire qui sont peut-être uniques du point de vue bibliographique, qui peuvent modifier une image reproduite, ou qui peuvent exiger une modification dans la méthode normale de filmage sont indiqués ci-dessous.

- Coloured pages / Pages de couleur
- Pages damaged / Pages endommagées
- Pages restored and/or laminated / Pages restaurées et/ou pelliculées
- Pages discoloured, stained or foxed / Pages décolorées, tachetées ou piquées
- Pages detached / Pages détachées
- Showthrough / Transparence
- Quality of print varies / Qualité inégale de l'impression
- Includes supplementary material / Comprend du matériel supplémentaire
- Pages wholly or partially obscured by errata slips, tissues, etc., have been refilmed to ensure the best possible image / Les pages totalement ou partiellement obscurcies par un feuillet d'errata, une pelure, etc., ont été filmées à nouveau de façon à obtenir la meilleure image possible.
- Opposing pages with varying colouration or discolourations are filmed twice to ensure the best possible image / Les pages s'opposant ayant des colorations variables ou des décolorations sont filmées deux fois afin d'obtenir la meilleure image possible.

This item is filmed at the reduction ratio checked below /
Ce document est filmé au taux de réduction indiqué ci-dessous.

10x			14x				18x				22x				26x			30x	
		12x			16x			20x			24x			28x					32x

The copy filmed here has been reproduced thanks to the generosity of:

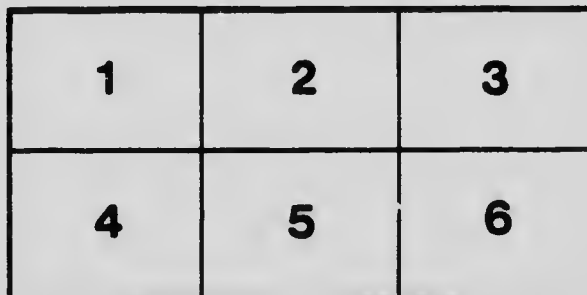
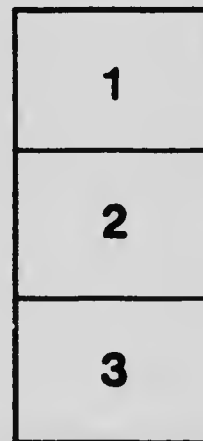
Vancouver City Archives

The images appearing here are the best quality possible considering the condition and legibility of the original copy and in keeping with the filming contract specifications.

Original copies in printed paper covers are filmed beginning with the front cover and ending on the last page with a printed or illustrated impression, or the back cover when appropriate. All other original copies are filmed beginning on the first page with a printed or illustrated impression, and ending on the last page with a printed or illustrated impression.

The last recorded frame on each microfiche shall contain the symbol \rightarrow (meaning "CONTINUED"), or the symbol ∇ (meaning "END"), whichever applies.

Maps, plates, charts, etc., may be filmed at different reduction ratios. Those too large to be entirely included in one exposure are filmed beginning in the upper left hand corner, left to right and top to bottom, as many frames as required. The following diagrams illustrate the method:



L'exemplaire filmé fut reproduit grâce à la générosité de:

Vancouver City Archives

Les images suivantes ont été reproduites avec le plus grand soin, compte tenu de la condition et de la netteté de l'exemplaire filmé, et en conformité avec les conditions du contrat de filmage.

Les exemplaires originaux dont la couverture en papier est imprimée sont filmés en commençant par le premier plat et en terminant soit par la dernière page qui comporte une empreinte d'impression ou d'illustration, soit par la seconde plat, selon le cas. Tous les autres exemplaires originaux sont filmés en commençant par la première page qui comporte une empreinte d'impression ou d'illustration et en terminant par la dernière page qui comporte une telle empreinte.

Un des symboles suivants apparaîtra sur la dernière image de chaque microfiche, selon le cas: le symbole \rightarrow signifie "A SUIVRE", le symbole ∇ signifie "FIN".

Les cartes, planches, tableaux, etc., peuvent être filmés à des taux de réduction différents. Lorsque le document est trop grand pour être reproduit en un seul cliché, il est filmé à partir de l'angle supérieur gauche, de gauche à droite, et de haut en bas, en prenant le nombre d'images nécessaire. Les diagrammes suivants illustrent la méthode.

MICROCOPY RESOLUTION TEST CHART

(ANSI and ISO TEST CHART No. 2)



1.45

1.50

1.56

1.63

1.71

1.80

1.88

1.96

2.00

2.05

2.10

2.15

2.20

2.25

2.30

2.35

2.40

2.45

2.50

2.55

2.60

2.65

2.70

2.75

2.80



APPLIED IMAGE Inc

1653 East Main Street
Rochester, New York 14600 USA
(716) 482 - 0 phone
(716) 288 - 5 jx

1918-30

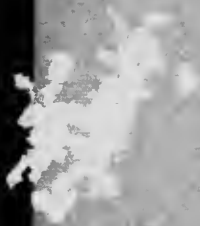
VANCOUVER
Bible Training School

PROSPECTUS

FIRST SESSION
1918-19



121 HASTINGS ST. WEST . VANCOUVER, B.C.



PROSPECTUS
OF THE
Vancouver Bible Training School
FOR THE
FIRST SESSION
1918-19

OFFICERS

CHAIRMAN—MR. R. W. SHARPE
VICE-CHAIRMAN—REV. JOHN L. CAMPBELL, D.D.
PRINCIPAL—REV. W. ELLIS, M.A., B.D.
TREASURER—MR. H. H. HOTSON, 777 Burrard Street.
SECRETARY—REV. W. ELLIS (pro tem).

REGULAR TEACHING STAFF

Rev. ELLIS REV. CHAS. THOMSON
MRS. FRANCES L. NETH

(See also note on visiting speakers at the end of the Prospectus).

SUPERINTENDENT OF WOMEN

MRS. FRANCES L. NETH

(Late of the Los Angeles Bible Institute)

121 Hastings Street West - VANCOUVER, B. C.

THE PURPOSE OF THE VANCOUVER BIBLE TRAINING SCHOOL

The design of the Bible Training School is the training of consecrated men and women as Sunday School workers, Pastors' Assistants, and as City, Home and Foreign Missionaries. It aims to furnish a thorough and systematic training in the knowledge and use of the English Bible, and to send forth workers with an intense love for souls, and a full realization of the presence and power of the Holy Spirit in their life and service.

It aims, also, to serve for the spiritual help of such as may be unable to avail themselves of the full course as taken by regular students.

NOTE.—Not being a Theological College, it does not profess to train its students for the Ministry.

RELATION TO THE CHURCHES

The Bible Training School is inter-denominational in character. It is not the product of, nor controlled by, any specific religious denomination, but seeks to serve the needs and requirements of such as may wish to take advantage of its course of training. It seeks to co-operate with all the Evangelical Churches, and so to supplement their work. No sectarian or merely denominational tenets will be taught in the classes.

DOCTRINAL BASIS

The Divine Authority and Plenary Inspiration of the whole Bible; the Doctrine of the Trinity; the Deity of our Lord Jesus Christ; the Fall of Man and the necessity of the New Birth; Justification by faith only, through the merits and death of our Saviour Jesus Christ, and not through our own works or deservings; Sanctification, the growth of the religious life under the guidance and

grace of the Holy Spirit; the Second Coming of our Lord Jesus Christ, and the Resurrection of the Dead; the everlasting blessedness of the Saved, and the everlasting punishment of the Lost.

INFORMATION FOR STUDENTS

ENTRANCE REQUIREMENTS:—

The fundamental requirement is a living faith in the Lord Jesus Christ. In addition to this, regular students should have had a fair English education, and be in sound health. Prospective students must fill in the application form, which will be furnished on request. Students will be accepted on trial, and if found unadapted for Christian work, they may be requested to withdraw.

CLASSIFICATION OF STUDENTS:—

REGULAR: Those who enter for the full course.

SPECIAL: Those who wish to avail themselves of the instruction in the classes, and the fellowship of the members of the Bible Training School, but who are unable from considerations of time, age, or health, to take the full course.

N.B.—By special arrangement, a regular student who is unable to take the whole of a prescribed year's work in one year, may take part of a year's work at a time.

CALENDAR:—

The Fall Term will commence the third Monday in September, and end at Christmas.

The Spring Term will commence the First Monday in January, and end the last of May.

FEES:—

Tuition is free, but a Registration Fee will be charged; Five Dollars a year for those taking the full course, and smaller fees for those taking only a part of the course.

SUBJECTS OF STUDY:—

The full course will comprise two years' work. The following is a list of the subjects, with brief descriptions of the courses:—

1 SYNTHETIC STUDY OF THE BIBLE—

(Two hours a week throughout the four terms).

This course will be a study of the whole Bible. The reading of the whole Bible will be required of every student. There will be a maximum of Bible reading and a minimum of explanation. The aim is to obtain a grasp of the English Bible.

2 BIBLE DOCTRINE—

(Two hours a week throughout the four terms).

This course will be a study of the Bible teachings on the Being and Attributes of God, the Person of Jesus Christ and of the Holy Spirit; Man; Sin; Salvation, etc.

3 OLD TESTAMENT EXEGESIS—

(One hour a week throughout the four terms).

4 NEW TESTAMENT EXEGESIS—

(One hour a week throughout the four terms).

Courses three and four will take up selected books or portions of books for detailed study and interpretation.

5 THE LIFE OF CHRIST—

(One hour a week throughout two terms).

In this course there will be a study of the four gospels so as to reconstruct a systematic account of the earthly life of Christ.

6 EARLY CHURCH HISTORY—

(One hour a week throughout two terms).

The book of the Acts will form the basis of this study. It will be supplemented by references to the Epistles so as to get a clear grasp of the early progress and development of Christianity.

7 CHRISTIAN EVIDENCES AND COMPARATIVE RELIGION—

(One hour a week throughout the four terms).

This course will embrace a study of the questions of the reliability of God's revelation, fulfilled Prophecy, the Character of Christ, Miracles, the effects of Christianity, etc. Its aim will be to give a solid ground for the beliefs of Orthodox Christianity. It will also take up a study of the great non-Christian religions.

8 MISSIONS:—

(One hour a week throughout the four terms).

This will not be properly a course of study, but is designed to bring to the students, messages from Home and Foreign Missionaries, so as to widen their outlook and sympathies and keep in touch with the preaching of the gospel in all lands.

9 GEOGRAPHY AND HISTORY OF BIBLE LANDS—

(One hour a week for two terms).

There is so much light thrown on the Scriptures by a knowledge of the lands of the East, and of their History, that this course aims at furnishing a useful side-light on Bible Study.

10 PRACTICAL CHRISTIAN WORK—

(One hour a week throughout the four terms).

The reason for the very existence of the Bible Training School is the training of Christian WORKERS. Class work in Personal Work, conducting meetings, visiting, etc., will be supplemented by the actual practice of the instruction given.

11 HOMILETICS—

(One hour a week for two terms).

Students taking this course will be required to study both the theory and the practice of the composition and delivery of addresses.

12 THE SUNDAY SCHOOL LESSON—

(One hour a week throughout the four terms).

To aid those students who will be taking Sunday School classes, as well as to provide a further opportunity for Bible Study, a weekly class will be held at which the International Sunday School Lesson will be taken up. This class will be open to Sunday School Teachers and others interested in Bible Study, even though they may not belong to the Bible Training School.

NOTE: Great importance is attached to the actual Christian work of the Students. It is expected that about the same amount of time will be devoted to this as to the class-room instruction.

BOARD AND LODGING:—

The Management will endeavour to secure board and lodging at reliable places, and at current prices, for students coming from a distance.

ASSISTANCE:—

Every help will be given to those who wish to find employment so as to work their own way while taking their course.

EVENING CLASSES:—

For the benefit of students who cannot attend Day Classes, a certain number of Evening Classes will be arranged for.

TEXT-BOOK:—

The one Text-book is the Bible, but students will be taught to appreciate and use the light which learning, archeology, literature and experience throw upon it.

MUSIC:—

Recognizing the great help which singing can be to the ministry of the Gospel, special attention will be given to cultivating a taste for the best evangelistic hymns. For those who can read music there will be instruction and practice in part-singing.

THE ASSOCIATIONS OF THE BIBLE TRAINING SCHOOL

The relation of the School to the Christian Institute is a very fortunate one. Not only has the Committee of the Institute granted the use of its premises, but because of this and of the cordial and intimate relations existing between the two, students will be privileged to meet visiting speakers, to hear special lecturers, and to engage in the various activities of the Institute.

VISITORS TO THE INSTITUTE

During the last year, the Rev. R. V. Bingham, Director of the Central Soudan Mission; Dr. Wm. Evans, of the Los Angeles Bible Institute; Mr. Robt. McMurdo, the evangelist; the Rev. John McNicol, B.A., B.D., Principal of the Toronto Bible College; Mr. Leon Tucker, of New York City, and Mr. Frank Varley, of the great Soldiers' Christian Association, have been among the visitors to the Institute.

In the near future visits from Dr. R. A. Torrey, and Mr. Henry Frost, of the China Inland Mission, are expected.

REGULAR ACTIVITIES OF THE INSTITUTE

One of the most unique organizations in Vancouver is the "Corner Club," a Bible Class of young business women which meets in the Institute on Tuesday evening at 6 o'clock, for tea and Bible Study. This club was organized in May, 1917, by Mrs. Frances L. Neth, who is teacher, counselor, companion and friend to the many young women who attend.

Beginning with an attendance of 40, it has grown steadily until it now has an average attendance of 225. The motto is "The Other Girl," and no safer or more hospitable place can be found in Vancouver than the "Corner Club" rooms, with the warm, genial welcome from Mother Neth, and the many splendid Christian girls who are found there.

There are eight Bible-women engaged in systematic Christian work in the city.

There is a useful work among boys and young men being carried on. The club is not yet six months old, having been started only in the early part of this present year (1918), but there is an average attendance of about thirty-five or forty. This club seeks to lead the unsaved to Christ, and to give Bible instruction and opportunities of definite Christian work to all who attend.

The Thursday evening meeting for Bible Study and Fellowship has had an average attendance of seventy-five. It has been a source of rich spiritual profit.

On Friday evenings there has been a class for the Sunday School Teachers of the city at which the International Lesson has been studied. This has had an average attendance of over fifty. It has been a great help in the work of Sunday School Teaching.

Commencing their work in this "atmosphere," the students of the Bible Training School will have distinct advantages and privileges in preparing for a larger usefulness.

