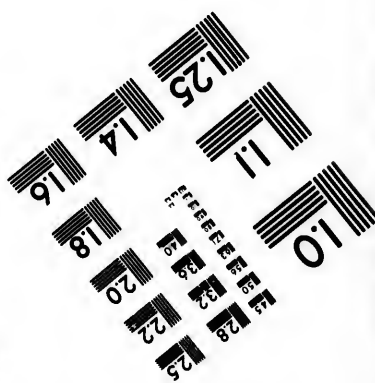
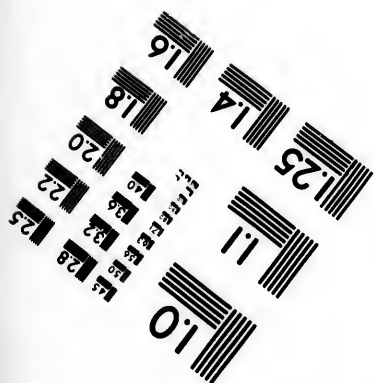
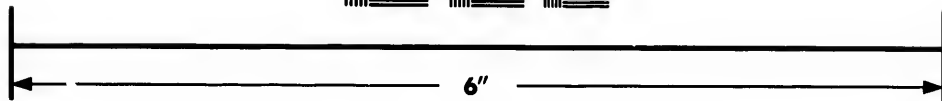
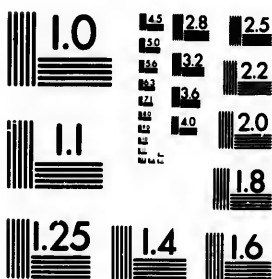


**IMAGE EVALUATION
TEST TARGET (MT-3)**



**Photographic
Sciences
Corporation**

23 WEST MAIN STREET
WEBSTER, N. Y. 14580
(716) 872-4503

**CIHM/ICMH
Microfiche
Series.**

**CIHM/ICMH
Collection de
microfiches.**



Canadian Institute for Historical Microreproductions / Institut canadien de microreproductions historiques

© 1987

Technical and Bibliographic Notes/Notes techniques et bibliographiques

The Institute has attempted to obtain the best original copy available for filming. Features of this copy which may be bibliographically unique, which may alter any of the images in the reproduction, or which may significantly change the usual method of filming, are checked below.

L'Institut a microfilmé le meilleur exemplaire qu'il lui a été possible de se procurer. Les détails de cet exemplaire qui sont peut-être uniques du point de vue bibliographique, qui peuvent modifier une image reproduite, ou qui peuvent exiger une modification dans la méthode normale de filmage sont indiqués ci-dessous.

- Coloured covers/
Couverture de couleur
- Covers damaged/
Couverture endommagée
- Covers restored and/or laminated/
Couverture restaurée et/ou pelliculée
- Cover title missing/
Le titre de couverture manque
- Coloured maps/
Cartes géographiques en couleur
- Coloured ink (i.e. other than blue or black)/
Encre de couleur (i.e. autre que bleue ou noire)
- Coloured plates and/or illustrations/
Planches et/ou illustrations en couleur
- Bound with other material/
Relié avec d'autres documents
- Tight binding may cause shadows or distortion along interior margin/
La reliure serrée peut causer de l'ombre ou de la distorsion le long de la marge intérieure
- Blank leaves added during restoration may appear within the text. Whenever possible, these have been omitted from filming/
Il se peut que certaines pages blanches ajoutées lors d'une restauration apparaissent dans le texte, mais, lorsque cela était possible, ces pages n'ont pas été filmées.
- Additional comments:/
Commentaires supplémentaires:

- Coloured pages/
Pages de couleur
- Pages damaged/
Pages endommagées
- Pages restored and/or laminated/
Pages restaurées et/ou pelliculées
- Pages discoloured, stained or foxed/
Pages décolorées, tachetées ou piquées
- Pages detached/
Pages détachées
- Showthrough/
Transparence
- Quality of print varies/
Qualité inégale de l'impression
- Includes supplementary material/
Comprend du matériel supplémentaire
- Only edition available/
Seule édition disponible
- Pages wholly or partially obscured by errata slips, tissues, etc., have been refilmed to ensure the best possible image/
Les pages totalement ou partiellement obscurcies par un feuillet d'errata, une pelure, etc., ont été filmées à nouveau de façon à obtenir la meilleure image possible.

This item is filmed at the reduction ratio checked below/
Ce document est filmé au taux de réduction indiqué ci-dessous.

10X	14X	18X	22X	26X	30X
<input type="checkbox"/>	<input type="checkbox"/>	<input type="checkbox"/>	<input checked="" type="checkbox"/>	<input type="checkbox"/>	<input type="checkbox"/>
12X	16X	20X	24X	28X	32X

tails
du
odifier
une
image

The copy filmed here has been reproduced thanks to the generosity of:

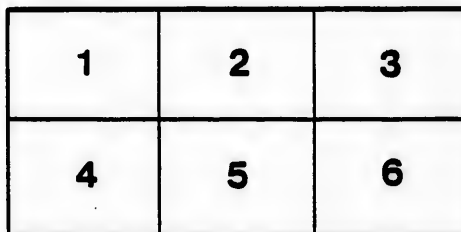
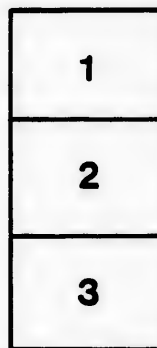
Department of Rare Books
and Special Collections,
McGill University, Montreal.

The images appearing here are the best quality possible considering the condition and legibility of the original copy and in keeping with the filming contract specifications.

Original copies in printed paper covers are filmed beginning with the front cover and ending on the last page with a printed or illustrated impression, or the back cover when appropriate. All other original copies are filmed beginning on the first page with a printed or illustrated impression, and ending on the last page with a printed or illustrated impression.

The last recorded frame on each microfiche shall contain the symbol \rightarrow (meaning "CONTINUED"), or the symbol ∇ (meaning "END"), whichever applies.

Maps, plates, charts, etc., may be filmed at different reduction ratios. Those too large to be entirely included in one exposure are filmed beginning in the upper left hand corner, left to right and top to bottom, as many frames as required. The following diagrams illustrate the method:



L'exemplaire filmé fut reproduit grâce à la générosité de:

Department of Rare Books
and Special Collections,
McGill University, Montreal.

Les images suivantes ont été reproduites avec le plus grand soin, compte tenu de la condition et de la netteté de l'exemplaire filmé, et en conformité avec les conditions du contrat de filmage.

Les exemplaires originaux dont la couverture en papier est imprimée sont filmés en commençant par le premier plat et en terminant soit par la dernière page qui comporte une empreinte d'impression ou d'illustration, soit par le second plat, selon le cas. Tous les autres exemplaires originaux sont filmés en commençant par la première page qui comporte une empreinte d'impression ou d'illustration et en terminant par la dernière page qui comporte une telle empreinte.

Un des symboles suivants apparaîtra sur la dernière image de chaque microfiche, selon le cas: le symbole \rightarrow signifie "A SUIVRE", le symbole ∇ signifie "FIN".

Les cartes, planches, tableaux, etc., peuvent être filmés à des taux de réduction différents. Lorsque le document est trop grand pour être reproduit en un seul cliché, il est filmé à partir de l'angle supérieur gauche, de gauche à droite, et de haut en bas, en prenant le nombre d'images nécessaire. Les diagrammes suivants illustrent la méthode.

rrata
to

pelure,
n à



32X

Art Association of Montreal, 1888.

PATRON.

HIS EXCELLENCY THE GOVERNOR-GENERAL—THE
MARQUIS OF LANSDOWNE.

COUNCIL.

President, MR. R. B. ANGUS.

Vice-President, MR. R. W. SHEPHERD.

Treasurer, MR. E. B. GREENSHIELDS.

COUNCILLORS.

For Two Years.

REV. J. EDGAR HILL.
MR. HUGH MCLENNAN.
“ W. G. MURRAY.
“ J. W. TEMPEST.
“ F. WOLFERSTAN THOMAS.
“ THOMAS WORKMAN.

For One Year.

MR. E. S. CLOUSTON.
“ JOHN LEWIS.
SIR. DONALD A. SMITH.
“ A. D. STEELE.
“ D. A. WATT.

Annual Subscription for Membership, Five Dollars.
Member's Ticket admits self and Family on all ordinary occasions.

X

✓

✓

✓

CATALOGUE.

OIL PAINTINGS.

	TITLE.	ARTIST.	PRICE.
X	1. Gossip	George A. Reid, A.R.C.A..	\$500
	2. View on the Richelieu—Villages of St. Antoine and St. Denis. }	Henry R. S. Bunnett.....	50
✓	3. Early Spring, Brolles	W. Brymner, R.C.A.....	50
	4. Citadel of Quebec, from the Old Market. }	H. R. S. Bunnett.....	250
	5. Portrait of Miss T——n.....	R. Harris, R.C.A...Not for Sale.	
✓	6. "Bacchus".....	T. Mower Martin, R.C.A..	50
	7. A Harmony.....	Mary E. Dignam	25
	8. Le jour de fête.....	W. Brymner, R.C.A.....	125
	9. <i>Jacques Bonhomme</i>	J. Kerr Lawson.....	150
	10. Scene on the Georgian Bay.....	O. R. Jacobi, R.C.A.....	84
✓	11. Theodosia	Percy Woodcock, R.C.A..	200

- X 12. Mt. Stephen, from Kicking Horse Pass } T. Mower Martin, R.C.A. . . . \$350
13. Junction of Bow and Spry Rivers, N.W.T. } Forshaw Day, R.C.A. 50
14. Old Mill at St. Marc, Richelieu Riv. H. R. S. Bunnett. 50
- ✓ 15. Runswick, Yorkshire John Hammond 50
- ✓ S 16. An Exile R. Harris, R.C.A. 60
- X 17. "Par derrièr' chez mon père" W. Brymner, R.C.A. 250
18. Country Road Helen Mar Gilbert. 125
19. A Study of Roses May Manley Bethune 25
- X 20. Portrait, Rev. Canon Norman. . . . R. Harris, R.C.A. . . . Not for Sale.
- XX 21. "After the rain." Exhibited at } J. M. Barnsley 500
the Paris Salon. }
Mr. Barnsley has received honorable mention, Medal of 2nd Class, and
Medal of 1st Class at the Versailles Exposition.
- X 22. "Papa will Return." Paul Peel, A.R.C.A. 330
23. The King Apple May Manley Bethune 75
- ✓ 24. Composing his Serenade R. Harris, R.C.A. 250
- S 25. L'Enfant du Sol Wm. Raphael, R.C.A. 40

- ✓ 26. *Atrappé*.....C. Alexander Smith..... \$125
27. *August Day*.....Lily M'Entee Brown..... 20
28. *Summer Afternoon*.....Lily M'Entee Brown..... 20
- X S 29. *A Breezy Day*.....J. M. Barnsley..... 120
30. *Study of a Head*.....W. Brymner, R.C.A..... 50
31. *Pansies*.....M. E. Dignam..... 25
32. *Roses*.....M. Hiester Reid..... 15
33. *Autumn*.....W. Raphael, R.C.A..... 40
34. "Twixt the Gloaming and the Dusk,
when the Kye come home." } M. Seymour.....Not for Sale.
35. *Mt. Sir Donald from Glacier Road*..T. Mower Martin, R.C.A.. 350
- X 36. *Old Antwerp*.....John Hammond..... 100
37. *Scene in the Back Woods*.....O. R. Jacobi, R.C.A..... 84
38. *Children of J. Burnett, Esq.*.....R. Harris, R.C.A.. .Not for Sale.
39. *A Misty Morning*.....M. Seymour..... 75
40. *Decorative Heads*.....Mary A. Belt..... 50

- | | | | |
|----|---|------|-----|
| | 41. Isle aux Cerfs,
St. Charles, Richelieu River. } H. R. S. Bunnett. Not for Sale. | | ✓ S |
| | 42. At Sunset.....G. A. Reid, A.R.C.A..... | \$35 | |
| X | 43. "Hermes".....T. Mower Martin, R.C.A.. | 50 | |
| | 44. Niphetos Roses.....M. E. Dignam..... | 35 | |
| | 45. "Here, where the world is quiet,
Here, where all trouble seems,
Dead winds and spent waves riot;
A sleepy world of streams." } M. Seymour..... | 300 | |
| | 46. Little Gossips.....R. Harris, R.C.A..... | 100 | |
| | 47. Harmony.. ..R. Harris, R.C.Å. | 100 | ✓ |
| | 48. The Young Squaw.....W. Brymner, R.C.A..... | 25 | |
| | 49. A Study.....Annie A. H. Macpherson.. | | X |
| ✓ | 50. In the Adirondacks.....W. Raphael, R.C.A..... | 40 | |
| | 51. "Speckled Beauties".....E. S. Shrapnel, A.R.C.A.. | 25 | ✓ |
| VS | 52. At the Window.....W. Brymner, R.C.A..... | 50 | |
| | 53. Head of French Peasant Girl.....M. E. Dignam..... | 75 | |
| | 54. The Ford, Androscoggin River,
West Bethel. } Arthur Cox..... | 75 | |
| ✓ | 55. School Days.....J. I. Weston..... | 35 | |

✓ S

56. November.....G. A. Reid, A.R.C.A..... \$40

57. "Like some vision olden of far other time,
When the age was golden in the young world's prime."
Mary A. Bell..... 40

58. Study of OnionsMinnie R. Simpson..... 30

59. Study of a Head.....G. A. Reid, A.R.C.A..... 50

60. Still Life StudyMinnie R. Simpson..... 30

61. "His Head towards Home"..... Homer Watson, R.C.A..... 45

1

✓

62. The Guitar Player..... M. Hiester Reid..... 55

63. AutumnR. Harris, R.C.A..... 60

X

64. A Chelsea PensionerR. Harris, R.C.A.... 60

65. KittensArthur J. Cooke 30

✓

65a. La chute de bien, Murray Bay ..W. P. Scott 50

WATER COLOUR DRAWINGS.

66. Sketch..... Lily M'Entee Brown..... \$ 7
67. A Wet Day, Prouts Neck..... T. F. Beevor..... 20
- ✓ 68. Valley of the Ottertail, B.C..... F. M. Bell-Smith, R.C.A.. 350
69. Family Jars..... E. N. Vanderpoel..... 50
- ✓ 70. Bay of Quinte, Adolphus Town.... J. T. Rolph, A.R.C.A..... 30
- ✓ 71. Evening..... Allan Edson, R.C.A..... 200
72. Study of Pansies..... Kate J. Smardon.....
- X 73. Yale, British Columbia..... L. R. O'Brien, P.R.C.A... 200
- S X 74. Muskoka Birches..... E. May Martin..... 50
75. "Lac Lorne," Point à Pic, Murray } W. B. Lambe..... Not for Sale.
Bay. }
- S 76. Sketch in Sydney, Cape Breton.... H. J. Macdonnell..... 10
- X 77. Evening, Holland..... John Hammond..... 90
78. Tulips..... E. N. Vanderpoel..... 35
79. Colorado Wild Flowers..... Marion Laing.....

X

V S

X X

S

X

S

S V

X

S X

80. The Glacier of the Selkirks. T. Mower Martin, R.C.A.. \$100

X 81. Rail, Road and River, in the } L. R. O'Brien, P.R.C.A... 150
Fraser Canon. }

82. "Travelling in a Jumper." E. S. Shrapnell, A.R.C.A.. 10

V S 83. Roger's Pass, B. C F. M. Bell Smith, R.C.A.. 250

X X 84. The Perils of the Banks L. R. O'Brien, P.R.C.A... 300

85. Colorado Wild Flowers Marion Laing

S 86. Spring Lily McEntee Brown 35

X 87. On the Caribou Road L. R. O'Brien, P.R.C.A.. 175

S 88. Deer Hunting Bivouac E. S. Shrapnell 15

S V 89. "Where the Wave Beats" H. J. MacDonnell 20

X 90. "Lac d'Amour," Bruges Belgium.. John Hammond 90

91. Elaine' Henry Carter 25

92. Cap Blanc, Murray Bay L. M. Lambe Not for Sale.

93. Rock Elms O. R. Jacobi, R.C.A. 90

S X 94. The Gate of the Canon, Fraser Riv.. L. R. O'Brien, P.R.C.A.. 150

95. Road through High Park, Toronto..J. T. Rolph, A.R.C.A..... \$35
96. In the National Park.....L. R. O'Brien, P.R.C.A... 300
97. Late Summer.....Lily M'Entee Brown..... 15
98. Study of Sun Flowers.....Kate J. Smardon
99. Sunrise in the Selkirks.....F. M. Bell-Smith, R.C.A... 200
100. On the Sands, Prouts Neck.....T. F. Beevor..... 20
101. Study of Maple Leaves,
Autumn Tints. } W. B. Lambe.....Not for Sale.
102. Colorado Wild Flowers.....Marion Laing
103. Lake at Laggan, N.W.T.....Forshaw Day, R.C.A..... 120
104. Cliffs at Murray Bay, Point à Pic..L. M. Lambe..... Not for Sale.
105. Colorado Wild Flowers.....Marion Laing
106. Rosita.....E. N. Vanderpoel..... 25
107. "A Blizzard.".....Libbie H. Lambe...Not for Sale.
108. Van Horne Range.....T. Mower Martin, R.C.A.. 50
109. Sea Shore, Cap Rosiers,
Gaspé, P.Q. } L. M. Lambe..... Not for Sale.

SX

A S

V
1
20
V
25

110. Evening, Montreal Harbour.....J. I. Weston..... \$25
- ✓ 111. Hazy Day, Summit of the Rockies, } F. M. Bell Smith, R.C.A. 200
B.C. }
112. Collection Colorado Wild Flowers. Marion Laing.....
113. Old Houses, Sydney, Cape Breton. H. J. MacDonnell..... 25
- 1 114. After the Shower, Lake of the } J. T. Rolph, A.R.C.A..... 20
Mountain. }
- S 115. The Old Bonsecours Church, } H. J. MacDonnell..... 20
Montreal. }
116. Mount Deville Range, N.W.T.... Forshaw Day, R.C.A..... 80
117. Dusty Lane, Early Spring, near } J. T. Rolph, A.R.C.A..... 40
Deer Park, Toronto. }
- ✓ 118. Late November New Cutting, } J. T. Rolph, A.R.C.A..... 35
High Park, Toronto. }
- 25 ✓ 119. The Hermit Range F. M. Bell Smith, R.C.A.. 150
120. In the Bush..... O. R. Jacobi, R.C.A..... 30
121. Cutting Ice..... E. S. Shrapnel..... 15
122. Mount Field, B. C..... T. Mower Martin, R.C.A.. 75
123. On Georgian Bay..... O. R. Jacobi, R.C.A..... 40
124. On the Berwickshire Coast..... J. Aitken..... 100

- S X 125. Vancouver HarbourL. R. O'Brien, P.R.C.A.. 75
 V S 126. Spring Time J. M. Barnsley 100
 127. Study of LilacsZaidee M. Lambe..Not for Sale.
 S 128. Chateauguay Henry Carter..... 15
 129. Sunset O. R. Jacobi, R.C.A..... 40
 130. Near Hampton Court, England... Allan Edson, R.C.A..... 80
 S V 131. A Sunny Day in the Illicilliwaet } F. M. Bell Smith, R.C.A... 150
 Valley, B.C. }
 132. Burning Brush..... O. R. Jacobi, R.C.A..... 30
 S 133. Spouting Rock, Prout's Neck T. F. Beevor..... 15
 134. Falls Leancoile, Rockies, N.W.T. Forshaw Day, R.C.A..... 110
 135. An October day on the lower Fraser.L. R. O'Brien, P.R.C.A... 80
 136. View on the Thames..... Kate J. Smardon. Not for Sale.
 137. On the Coast, Nahant, Mass..... J. L. Weston..... 40

ARCHITECTURAL AND DECORATIVE DESIGNS.

138. Arabesque Ceiling Design. . (1)
 Room in White and Gold. ..(2) } Montague Castle, pupil of
 Memorial Window.(3) } V.G. Stiepeveich of Florence.
 Stained Glass Fanlight.....(4)
 139. Stained Glass Skylight, Montague Castle.....

