

The copy filmed here has been reproduced thanks to the generosity of:

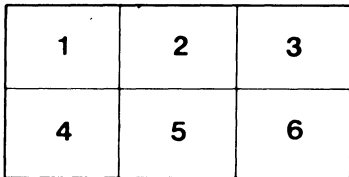
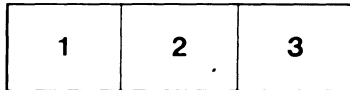
Library Division
Provincial Archives of British Columbia

The images appearing here are the best quality possible considering the condition and legibility of the original copy and in keeping with the filming contract specifications.

Original copies in printed paper covers are filmed beginning with the front cover and ending on the last page with a printed or illustrated impression, or the back cover when appropriate. All other original copies are filmed beginning on the first page with a printed or illustrated impression, and ending on the last page with a printed or illustrated impression.

The last recorded frame on each microfiche shall contain the symbol \rightarrow (meaning "CONTINUED"), or the symbol ∇ (meaning "END"), whichever applies.

Maps, plates, charts, etc., may be filmed at different reduction ratios. Those too large to be entirely included in one exposure are filmed beginning in the upper left hand corner, left to right and top to bottom, as many frames as required. The following diagrams illustrate the method:



L'exemplaire filmé fut reproduit grâce à la générosité de:

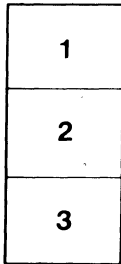
Library Division
Provincial Archives of British Columbia

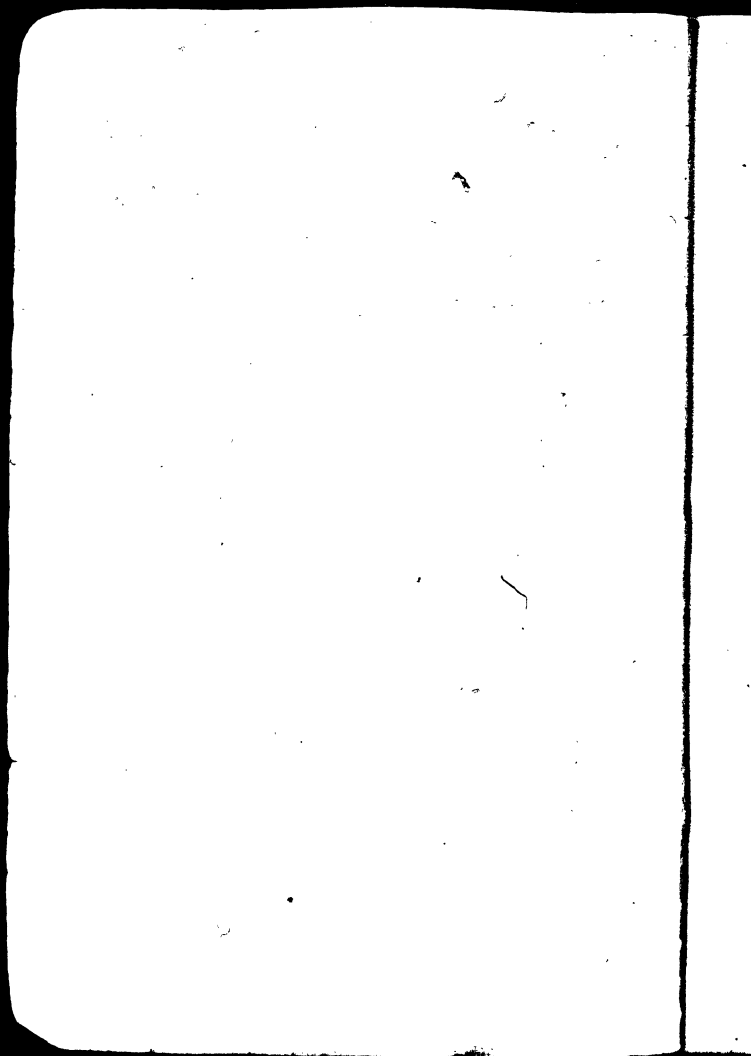
Les images suivantes ont été reproduites avec le plus grand soin, compte tenu de la condition et de la netteté de l'exemplaire filmé, et en conformité avec les conditions du contrat de filmage.

Les exemplaires originaux dont la couverture en papier est imprimée sont filmés en commençant par le premier plat et en terminant soit par la dernière page qui comporte une empreinte d'impression ou d'illustration, soit par le second plat, selon le cas. Tous les autres exemplaires originaux sont filmés en commençant par la première page qui comporte une empreinte d'impression ou d'illustration et en terminant par la dernière page qui comporte une telle empreinte.

Un des symboles suivants apparaîtra sur la dernière image de chaque microfiche, selon le cas: le symbole \rightarrow signifie "A SUIVRE", le symbole ∇ signifie "FIN".

Les cartes, planches, tableaux, etc., peuvent être filmés à des taux de réduction différents. Lorsque le document est trop grand pour être reproduit en un seul cliché, il est filmé à partir de l'angle supérieur gauche, de gauche à droite, et de haut en bas, en prenant le nombre d'images nécessaire. Les diagrammes suivants illustrent la méthode.





A. M. D. G.



DEDIE

A

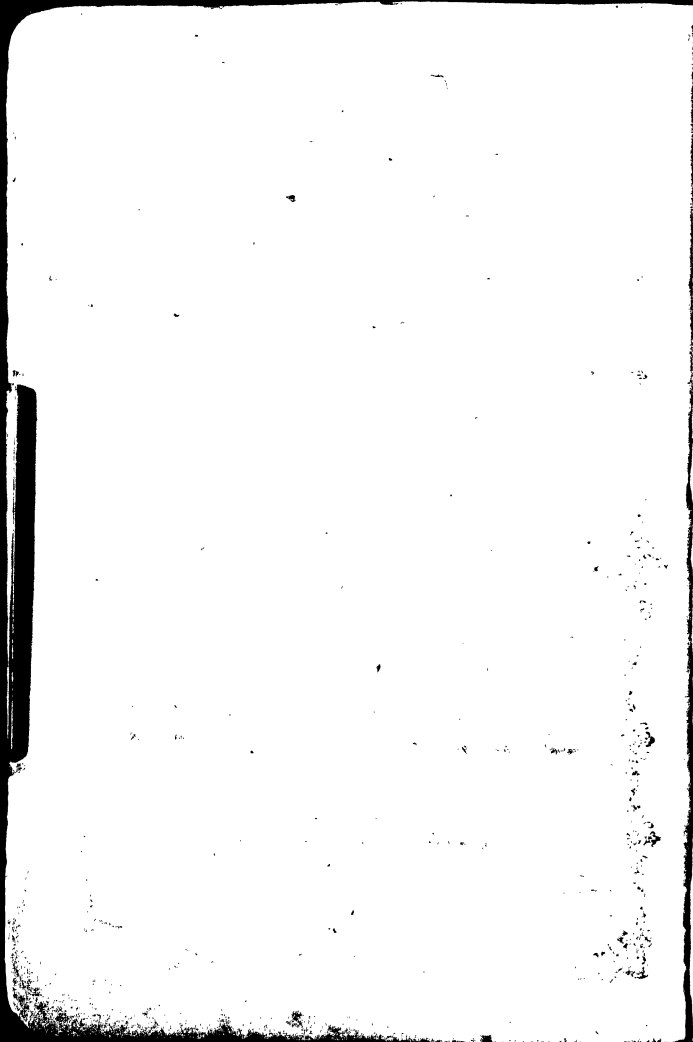
SA GRANDEUR MONSEIGNEUR

A. M. A. BLANCHET

Evêque

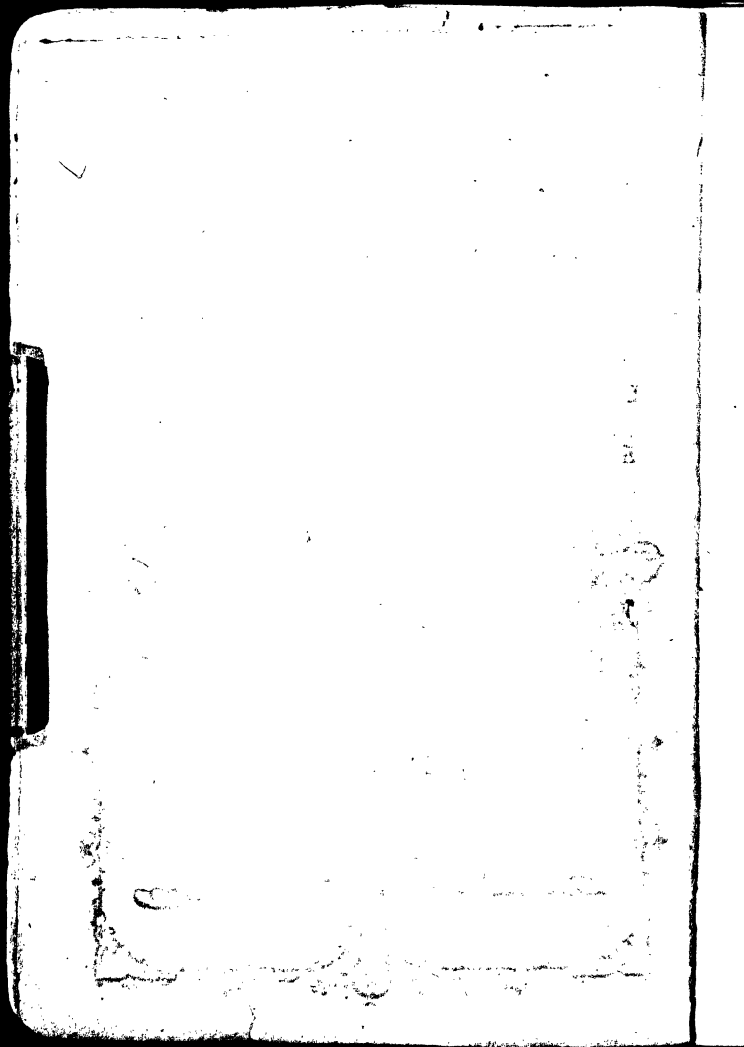
DE MRSQUALI.

PAR L'AUTEUR.





Rev. L. N. St. Onge, Detroit



Alphabet Yakama

Contenant

Les Prières, les Cantiques et le Catéchisme dans
la même langue.

A l'usage des enfants de la tribu des Yakamas,
sous le patronage des R. R. P. P. Jésuites.

PAR

L. N. ST. ONGE PRÊTRE,
Ex-Missionnaire des Yakamas.

Imprimé à la PROVIDENCE.
MONTREAL.
1872.

7117
970.55
\$148



SAPSIKUATPAMA

TIMASH

MAMACHATUMKI.

YAKAMIEI MIANASHMAMIEI.

Anakunak I ua Skulitpama sapsikuat,
ku Tanamutem, ku uampash: kunare I ua tana-
urutempama sapsikuat.

I timana
PEL SANTOS.

168955



A
M
U



A	C	E	H	I	K
L	M	N	O	P	R
S	T	U	&	?	!

A	C	E	H	I	K	L
M	N	O	P	R	S	T
U	&	?	\$!		

1 2 3 4 5 6 7 8 9 0

A **C** **E** **H** **I** **K** **L**
M **N** **O** **P** **R** **S** **T**
U **&**

a *c* *e* *h* *i* *k* *l*
m *n* *o* *p* *r* *s* *t*
u

A **C** **E** **H** **I** **K** **L**
M **N** **O** **P** **R** **S** **T**
U **&** **?** **!**

a *c* *e* *h* *i* *k* *l*
m *n* *o* *p* *r* *s* *t*
u

A B C D E F G H I J K L M N
 O P Q R S T U V X Y Z
 a b c d e f g h i j k l m n o p q r s
 t u

1 2 3 4 5 6 7 8 9 0

1. LEKSIO.

ca †	ce	ci	co	cu
ha	he	hi	ho	hu
ka	ke	ki	ko	ku
la	le	li	lo	lu
ma	me	mi	mo	mu
na	ne	ni	no	nu
pa	pe	pi	po	pu
ra	re	ri	ro	ru
sa	se	si	so	su

† Faites prononcer tsa, tse, &c.

U
T

l
t

L
T

U
t

3. LEKSIO.

cak	cek	cik	cok	euk
cal	cel	cil	col	cul
cam	cem	cim	com	cum
can	cen	cin	con	cun
cap	cep	cip	cop	cop
car	cer	cir	cor	cur
cas	ces	cis	cos	cus
cat	cet	cit	cot	cut
cha	che	chi	cho	chu
cla	cle	cli	clo	clu
ema	eme	emi	emo	emu
ena	ene	eni	eno	enu
era	ere	eri	ero	eru
eta	ete	eti	eto	etu

N. B. Faites prononcer *tsak, tsal, tsam, &c.*

4. LEKSIO.

kak	kek	kik	kok	kuk
kal	kel	kil	kol	kul
kam	kem	kim	kom	kum
kan	ken	kin	kon	kun
kap	kep	kip	kop	kup
kar	ker	kir	kor	kur
kas	kes	kis	kos	kus
kat	ket	kit	kot	kut
kla	kle	kli	klo	klu
kra	kre	kri	kro	kru

5. LEKSIO.

lak	lek	lik	lok	luk
lal	lel	lil	lol	lul
lam	lem	lim	lom	lum
lan	len	lin	lon	lun

	ap	lep	lip	lop	lup
kuk	ar	ler	lir	lor	lur
kul	as	les	lis	los	lus
kum	at	let	lit	lot	lut
kun	ra	lre	lri	lro	lru
kup	sa	lse	lsi	lso	lsu
kur	ta	lte	lti	lto	ltu

6. LEKSIO.

kut	mak	mek	mik	mok	muk
klu	mal	mel	mil	mol	mul
kru	mam	mem	mim	mom	mum
	man	men	min	mon	mun
luk	map	mep	mip	mop	mup
lu	mar	mer	mir	mor	mur
lum	mas	mes	mis	mos	mus
lur	mat	met	mit	mot	mut

7. LEKSIO.

nak	nek	nik	nok	nuk
nal	nel	nil	nol	nul
nam	nem	nim	nom	nun
nan	nen	nin	non	nun
nap	nep	nip	nop	nup
nar	ner	nir	nor	nur
nas	nes	nis	nos	nus
nat	net	nit	not	nut
nra	nre	nri	nro	nru

8. LEKSIO.

pla	ple	pli	plo	plu
psa	pse	psi	pso	psu
pta	pte	pti	pto	ptu
pak	pek	pik	pok	puk
pam	pom	pim	pom	pum

pan	pen	pin	pon	pun
pap	pep	pip	pop	pup
par	per	pir	por	pur
pas	pes	pis	pos	pus
pat	pet	pit	pot	put

9. LEKSIO.

rak	rek	rik	rok	ruk
ral	rel	ril	rol	rul
ram	rem	rim	rom	rum
ran	ren	rin	ron	run
rap	rep	rip	rop	rup
rar	rer	rir	ror	rur
ras	res	ris	ros	rus
rät	ret	rit	rot	rut
rla	rle	rli	rlo	rlu
rsa	rse	rsi	rso	rsu

rta rte rti rto rtu

10. LEKSIO.

sak	sek	sik	sok	suk
sal	sel	sil	sol	sul
sam	sem	sim	som	sum
san	sen	sin	son	sun
sap	sep	sip	sop	sup
sar	ser	sir	sor	sur
sas	ses	sis	sos	sus
sat	set	sit	sot	sut
sha	she	shi	sho	shu
ska	ske	ski	sko	sku
sra	sre	sri	sro	sru
sta	ste	sti	sto	stu

11. LEKSIO.

tak tek tik tok tuk

tal	tel	til	tol	tul
tam	tem	tim	tom	tum
tan	ten	tin	ton	tun
tap	tep	tip	top	tup
tar	ter	tir	tor	tur
tas	tes	tis	tos	tus
tat	tet	tit	tot	tut
tka	tke	tki	tko	tku
tla	tle	tli	tlo	tlu
tra	tre	tri	tro	tru
tsa	tse	tsi	tso	tsu

12. LEKSIO

Ala	Cir	Ink	Iao	Kop
Ate	Cho	Imk	Isa	Kup
Asa	Eno	Iuk	Itl	Kao
Ana	Iak	Ira	Kut	Lur

Lao	Nam	Pti	Por	Rto
Lir	Nem	Pla	Pui	Sol
Mam	Nit	Psa	Pus	Sti
Mio	Nie	Pot	Run	Tak
Mun	Ora	Pat	Rai	Tin

13. LEKSIO.

Anak	epar	koir	miui
alel	emma	kelle	maui
atao	etet	kria	maisr
apen	etok	kosi	mali
asum	ichi	koak	nika
aiai	iaia	keto	nini
amie	iaka	krar	nenno
arsh	iasb	laak	natu
atit	iart	lusi	pipi
aiet	iish	leom	pina

Rto	anen	pimr	shir	teta
Sol	aott	plar	siui	tuin
Sti	cuai	pisr	shua	tlar
Vak	chen	penu	shai	talr
Fin	epap	paiu	skul	tano
	elip	piet	slet	tiam
niui	isht	piap	srop	tala
au	itla	puas	shir	tila
aisr	iush	pier	simo	tuta
hali	kiak	papr	shri	tina
ika	lais	paia	silā	tita
hini	mela	rair	sale	uina
eno	mish	ropt	tiat	uiat
atu	make	riao	tapo	uila
pipi	mois	rosa	tamo	uala
ina				

14. LEKSIO.

Ichi i ua nars shir tin. Mam i ua Pol ? Ichi i ua, nitpa. Mish i ua shir ? I, shir Iua. Mish nesh ua rto tin ? I, rto nam ua tin. Ichi i uamsh nars a-a. Mish aua nchi atla ? I, nchi aua atla. Tei nam ua nitpa, chao i ua pui. Mam i ua mai lor uao ? Takpa i ua lor uao. Mish i ua lor pti ? I, lor i ua pti. Cuai nesh ua rto ink; ku imk chao nam ua rto tin. Ichi i ua nars chao shir tin. Mam i ua ? Ichi i ua.

15. LEKSIO.

in. Tun i ua nitpa? Chao
 ta, i ua tun nitpa. Chao i ua sti,
 I, sil sim i ua ku eno. Mish i
 to ua shir iuk? I, shir i ua ku
 hi rto. Nars i ua nchi run ca-
 ua pa chish pa. Chao i ua lars
 a. sim, lor i ua. Metl restr i ua;
 ua mish iua nipt? Mai lor i ua.
 o? Tun i ua ichi: mish i ua sol?
 i I, sol i ua rai. Tei nam ua
 ti. nitpa, imk? Chao nesh
 k ua tei. Mish i ua cir ichi sti?
 i Chao i ua cir, rto i ua. Mam
 m i ua nars mai shir isa?
 Chao i ua nars shir.

16. LEKSIO

Alaie	ikiks	lamet	patun
atish	iusha	lakas	pelro
atnat	iosha	lepoa	paish
anuum	kata	lorma	pascat
atuin	kakia	menik	perni
asuan	kalor	murle	ptiat
amnut	katla	nusor	pusha
amash	kuale	nicht	piush
amar	kepet	nauat	roemi
amper	kakom	pruit	roror
atuei	kleim	pachu	renen
asham	kapus	pshua	rosat
apish	kunak	penuk	rapil
atuan	kraik	palei	raslo
solie	tinat	tuert	tlaua

ro
 so
 so
 so
 so
 sh
 ten
 pa
 had
 Kp
 uat
 shin
 pai
 tat

roror	tilat	tluei	uattui
soras	tutni	tenen	utpas
sorni	tuati	tarus	uitla
sorta	tenor	totie	uinam
sorna	tinma	totik	uinak
shrie	takta	tuiei	uasko
temna	tauar	tlaua	uapai

17. LEKSIO.

Metl pa ua tinma nit-
 pa? Potmo, ku napo sil-
 haos pa. Mish i ua chish?
 Kpes i ua chish. Metl nesh
 uata iush paish nesh uata
 shir? Nipt mesh uata tala,
 paish nam uata rto: ku me-
 tat tala amaku uata mai rto.

Tupan i uata tala ? Silpa i
 uata kuie. Mun nam torta
 rai ? Ink nesh torta maisr.
 Tukin nam torta ? Ink nesh
 torta kosiki. Tun nesh uata
 shapsh ? Nusor mesh uata
 ku sor, ku kuitsk saplil.
 Mish mesh ua apen ? Chao
 nesh ua apen; chei-chei i ua
 apen. Nim epap, rai. Chao
 nesh ua paiu, shir nesh ua,
 ku rto. Menik nam ua rai ?
 Chao nesh ua menik; ichi
 nesh ua enmi nit, capa. Ni-
 ka, mam nesh ua kosi ? Tak-
 pa mesh ua kosi iaia. Mela

nesh ua sil ku tarus; taonpa
sim i ua lor.

18. LEKSIO.

Shir i uata uasko uorom.

I, shir i uata ku lomet. Pui
pa i ua kraio kosi, kunkin i
ua chao rto. Paiu nesh uata
epap. Tenor i ua ichi tin.
Chao nesh uacha shir; ku
nam uacha chao shir imcha,
miui. Cho, ao nanam uata
chaoka tluei temna. Shir na-
nam uata. Chao nesh ua lor
lepoa; miui sim nesh uacha
lor: niptit nesh uacha lesak.
Ichi i ua nars shnuai rosat :

19. LEKSIO.

asham	chitat	kalper
chelchel	chukui	koltep
chiluit	eekcik	kralar
chemchem	cikcik	kunkin
cheisha	ialpas	kupkup
cheitla	inkaks	kashkash
cheini	iapash	kuatlat
chemak	iaartla	katnam
cheisha	iksiks	laplash
chinaf	iutla	irelre
cheinal	krolem	lasuai
chrao	krenut	laksha
chemte	kriash	laktla
chenik	kushri	laruir
chitla	kutkut	lepsuit

larpit	psatat	tutsha
maishir	parnao	tutnra
musmus	pushem	tuttla
miauar	pteniks	tutnal
mishel	pinmin	tuksai
nartit	roshroi	tuptup
neemin	ralukt	naptai
nipama	sharat	uapsor
nartik	spatit	uaspas
niptit	sennor	uitses
paoluk	srarap	ualicht
pishpish	shatie	uarpush
petlat	stetas	uatsukt
pruial	sbemor	uampash
persha	shiuet	uampsha
piluct	tatpas	uatiksh

20. LEKSIO.

Tlar i ania Roemi Miauar,
 ichi ticham kú roemi ticham;
 kunkin i ua Miauar tlarpa
 tupan. Penk i ua rto ku shir.
 Lars i ua tin kunak. Chao i
 ua lars sim: napo pa ua, nars
 asuan ku nars nchi uinsh.
 Mish mesh ua lor kutkut?
 Maisr lor nesh uata kutkut
 enmipa nitpa. Riao nesh ua
 ticham, chao i ua tun chish.
 Chemte aua cikcik. Mish i ua
 ichi cik-cik, mish i ua luca, o
 mish i ua koir? Chao i ua
 mish, chemak i ua. Koltep

nesh uacha mus-mus miui, ku
sehnuai pa tranana: pipshsim
ka pa ua. Chao i ua shir ichi
pteniks, chelchel i ua.

21. LEKSIO.

Psatak, rai, riao nesh ua
em. Cheshkt i ua larpit, rai-
ma, kushri i ua paruit. Paiu
i cheisha larpitnan. Roemi
Miauar, Chitla i ua shakuin,
kunkin i ua chao shir ku
shnuai, ku chao tlekue i ua-
ta uakrish. Atnat i ua lam.
Uapsor i ua ichi asuan
tlarpa kutkutpa. Katnam i
ua laplash. Shiuet i ua in'rai.

Mish aua tauar ichinmi tin-
 mi? Kuitsk aua. Shir i ua
 tkuatat sharat. Shin nam i
 nia narstatpas ku niach? Hi-
 ler nesh i nia tatpas, kush i
 nia niach Polnem. Chao i
 ua palei tuttla, keto^ri tutnra
 tlar saplil.

22. LEKSIO.

atauit	atnani	aitalu
akusha	anitla	atetsha
atotika	aiksha	atetna
aloshna	anaku	chatiksha
anisha	anotat	chatikta
atisha	atachish	chatiktla
chiluitit	lekoksha	tuimpash

einauas lekokuab tamtlake
 chalamet lakamin tortorsha
 chipshisha daplitas timasha
 iaroikt liuratit timatla
 inmötla lekokuut tamolicht
 inmosha larpiak tutanik
 ikunak latortor timasha
 ketlani metasha uapoksha
 kualesim mamusha uashani
 kolauit metaptit uapatla
 kaiaso nanasha uilasha
 kunenik nepatak nilatla
 kalaksha palalei ualaloksh
 kratkati paoluknut uanasha
 kuatlani panatit uanatla
 kriachi penitas uinani

kiukiulas palesram uinatla
 kuikuisha petlani uinata
 kutkutsha petlashia uisera
 prenosha petlanal uiseral
 prenotla shratanas uatiksha
 lakissa tranasha uatikal

23. LEKSIO.

Shir nesh uacha tuimpash
 miui, kushania in'rainan.
 Tun nam akusha? Ink nesh
 chao tun akusha; aotika
 nesh aiksha. Shiruui tranata
 innotla tin: chilitu auame-
 lesh, anakuish eluksh, kutu-
 kin i lunra tinmami femba.
 Tuiao i chatiksha. Comuk

Tatpas ? Shapa ashtesh tlar-
maman, penmiok nitiao. Lor
i ua chiluitit ichinak ticham-
pa. Kualesim nesh uisersa.
Stinmi nesh ua cinauas. Pshu-
anmi i ua Shaluinmi chala-
met. Ao pam uiserta Lusi-
nmi kopkople.

24. LEKSIO

Shimin aua ichi ketlani
tuimpash ? Sosepnmi aua.
Kualesim i kalaksha mia-
nashnan ichi tlemama. Pa-
lalei nesh ua kriachi. Nepa-
tak Peliksnmi tutanik, tliks
nesh uashata. Mulmulkem

nesh uinata. Tun nam unep-
 ta kunak? Ink nesh unepta
 atortor ku ialpas, nars kre-
 mor, ku timani sil tosras elu-
 kuas. Mish nam pruisha, mi-
 auar, mun nesh uata shnuai-
 ni ku'sh petlani tranata? Pet-
 lani nam tranata, rai, ama-
 ku unepta ncemin shukuat-
 nan, ku nam ureta tinmamin
 tranatnan. Chao i uinana si-
 elken atoei Skalapten, anao-
 ret i uacha petlanal. Paruial
 ku palional nesh uata kua-
 lesim, kunkin nesh chao uin-
 ata emperkem.

25. LEKSIO.

ananui
 akushakush
 atemnasha
 aomnamuk
 atornasha
 aparemsha
 ekukpama
 chemaokle
 chilitisha
 chitatauas
 krenutauas
 kustemai
 kakiama
 kralarisha
 krapakusha

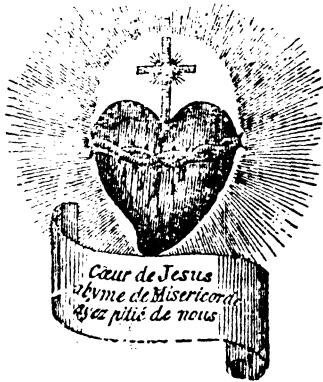
emulatsha
 itamiksha
 iatlepisha
 ushanasha
 uinashatla
 chatuili
 chatiksha
 parnamipa
 sapacemksa
 shiuatnosha
 sapuluksha
 shapapiktla
 shapapruisha
 shapapruinal
 sapaluisa

koirtemna	sapaluitla
kraikkraik	sapaluial
kutkutnauas	skolapauas
asupisa	sramaisrpama
ratanisha	srakolauit
uiatisha	sapauilatsha
ratanitla	talapama
ratania	tortorpama
mianashma	tamanuit
mianashnut	tanauersha
mianashie	tamaniksha
nellauisha	ternaotisha
pinachelsha	tanauertla
pinacheltila	tamainaktla
patinauas	tanamutem
patkrokauas	tamanikal

26. LEKSIO

1.	1	Nars.	16.
2.	11	nipt.	17.
3.	111	metat.	18.
4.	1111	pinipt.	19.
5.	11111	parat.	20.
6.	111111	ptarninsh.	30.
7.	1111111	tosras.	40.
8.	11111111	paratomat.	50.
9.	111111111	cemeskt.	60.
10.	1111111111	potemit.	70.
11.	potemit uina	nars.	80.
12.	potemit uina	nipt.	90.
13.	potemit uina	metat.	100.
14.	potemit uina	pinipt.	100.
15.	potemit uina	parat.	

16. potemit uina ptarninsh.
 17. potemit uina tosras.
 18. potemit uina paratomat
 19. potemit uina cemeskt.
 20. niptit.
 30. metaptit.
 40. piniptit.
 50. paraptit.
 60. ptarninshaptit.
 70. tosraseptit.
 80. paratomateptit.
 90. cemeskteptit.
 100. potaptit.
 1000. potapotaptit.



27. LEKSIO.

Ichi ua Sesunmi temna timani. Shnema-shõnmi aua ualaloksh, ku ptiani i ua neemiao ataitiao. Ilunra neemici. Paiu i tkrershatlanan tinan, ku kroshem pa ua tinma - chiluit aua temna tlariao tuiao, kunkin i uanasha tiniuan Sesunmikenik temnakenik nemanak koir shapatranatesh temnan. Penrush i tkrerna nemanak Sesunem, shir namtk ichi ikook itkenikta pinminan ataitnan neemiki ataitki.

Ichi
ak s
reps
ialne
naku
atit
ina n
enk
ariaoi
a, ku
nk sh



28. LEKSIO.

Ichi i ua Malinni temna. Piashatesh koka shnuaitlan temnan aateshku anachare uarepsha Sesunam neemiki chiluititki. Uatatalnenk i uacha Mali, ku i ua uatatuialuit nakuish shir natit. Kunkin i ttauarnra plash natit Malinmipa temnapa. Tanamutemki, ku jina naknuitki chiluititkenik i ttauarnra kunkin natit neemipa temnapa, ku chiluititki i ariaoisha. Shir nam naknuita uatatuial temna, kuten, ku i kuatlata Roemi Mianar emikak shirki temnapamaki tiuatki.



29. LEKSIO.

Caka i uacha atnatio uatapliepa Sese ku i tanamutemshana Olipienmipa nputpa. Ikush i pruina temnapa: ia! tliks nesh atnata tinmaniei eikenktesh elukshkenik. Paiu'sh atauisha pemanak, ku ttushma, chao pa tmakta inak nattun. Anakuish nesh aotika atnata anaoret chao mun pa ureta nuitkaki temnaki uatatuinān, larpitnan, paliotnan, uanptnan ku tlarnan chiluitinān. Ikush i pruipruina Neemi shir Miauar, ku lkekap atranana temna. I tkraokrina tichamiao ku i latnana latnatnan ku tiniuan. Anachare i tanamutemna, ku rto kuare i tranana nemanak uakrishani-

mesh piunikink atnatki tlapre namtk ua palei
ku shnuai. Ia ! kutenma chaoka pam uata kro-
shem ku chiluit. Paish pam ua chao rto shir-
pa kutpa, tanamutemtapam ku rto matesh
tranata temna.





tim
mi
sha
P
ore
ku
tin
P
pa
na
Co
cha
tim

30. LEKSIO.

Ukatchalkenikpamapa i ua nars shii
 timash. I uianauisha Cemuk Tatpas oe-
 michnik uaseski. Potemo pa ua tinna. Pa
 shapsha uases, taonauatesh, nchi i ua uanauish.
 Pinist i ua uases, ku pur i ua kusenik, ana-
 oret i ur psanmi anic. Nars i ua auct, i
 kalaksha mianash. Shnuai pa ua kumak
 tinna, chao tun aua tatpas ku chao niach.
 Flakoama pa ua ; pathuatatta Cemuk Tat-
 pasmaman pa uacha miui, ku liet pa tra-
 nana shirki tamanuilki. Anak i uamsh
 Cemuk Tatpas pikshani tukuash, ku pen-
 cha i shapsha pinminik utpas ku tanamu-
 tempama patun. Paia i thueisauisa Mia-

uar. *Lotikasim i uatarnci tinnami hashuit ku
 pinminik shir tranatuit, kushri pinminik kua-
 tlatauit Poemi Miauarnmipa, ku chao mun
 ikush nchi i kulkullarnci Cemak Tatpas tin-
 mamiei uakrish anitesh shiiki sapsikuatki, ku
 chao mun i tuanatarnci tinnaman tlarpia ti-
 champa sapsikuatesh tanamutempaman ta-
 maxuitnan shapauinattan rocmichen.*



Sai

S
 am
 irpa
 Mia
 Roe
 lakr
 nan

TLAR I UA TANAMUTEM

YAKAMAMIKINATTUNKI.

UATAPLIENMI TIMASH.

Uaniktki Pshetnmiki, ku Ishtnmiki, ku
Sait Esplinmiki. Ao shir.

TARSHITPAMA TANAMUTEM.

Shir in'nam uamsh Roemi-Miauar unep-
am enmin temnan; shir nam naknuimta ra-
irpa kunkin mesh atauita. Shir Mali, Roemi
Miauararmi peha tanamutemk enmiei. Na!
Roemi Miauararmi ash naknuitla maisr-maisr
lakrairim, naknuim, cuai shapa uinam na-
nam.

MAISR-MAISRPAMA TANAMUTEM.

Uinam Miauar Roemichnik; uinam enmipa temnapa nanam shir temnan, nanam shir uapsor: uiat uinak Chiluit Uapsor. Im'na'uamsh shir Miauar Roemichnik; im'tlar nam ashukuashamsh, im'tlarnan nam amciarosamsh, im'tlarnan nam akrenusbamsh. Uinam Miauar Roemichnik, uinam enmipa temnapa, nanam shir temnan, nanam shir uapsor; uiat uinak Chiluit Uapsor. Chao in'paruita, chao in'chiluit nattunta, chao in'piatnata, chao in patuita, chao in'paliota, chao in'liuatita, chao in'cheskta, chao in'tun chiluit akuta. Uinam Miauar Roemichnik; uinam enmipa temnapa, nanam shir temnan, nanam shir uapsor; uiat uinak Chiluit Uapsor. Kualesim nesh atuanata Roemi Miauarminan tamanuitnan kush paish anachare chiluit i shapa kutarnei chiluitnem Uapsornem, kupailk nesh naritita temnapa, kush auinanota Laplitasnan nuitkaki temnaki, kunkiu nesh koir tranata temna, kunenik nesh anacha'rtota shiriao. Kualesim ikush nesh ua enmi temna.

SESU KLINMI TANAMUTEM.

Neemi Pshet im'nam uamsh roemichnik, shir nam'manak patmaknani tarnei uanicht; shir i uianaitarnei eminik miauaruit; shir nam emanak pa tuanenitarnei ichinak tichampa tinma prui, anakushrim'manak pa tuanenishamsh sielpama tinma. Nemanak nim kkuatat kualesim maisr-maisr; ku nemanak laknanim chiluitit aateshkushri namak laknanisha tenormaman chiluitit anakunkink pa chiluitia neemiao. Ku rto anianim temna tkraokrinal. Ku tekenika nemanak eikenkem shnuaikenik. Ikush i ua neemi temna.

ASHNMI TANAMUTEM.

Kuatlak Mali, im'na'ua kekom shir, eminik i uamsh Roemichnik Miauar: im'na'ua imksa shir tlarpa aietpa, shir mesh ua eminik Isht Sesu.

Sait Mali Roemichnik Miauarumi pcha, tanamutemk neemiei chiluitmamiei tinmaniei, ichi ikook aateshku namak atnata.

Ikush i ua neemi temna.

APOTMAMI TANAMUTEM.

In'nesh nuitkasha Roemichan Miauarnan tlarpa rtonan, anapenk ania roemipama ticham ku ichik ticham. Ku mesh emanak Sessu Klinan pinminiknan Ishtnan, lars anaku aokueltan neemin Miauarnan. Anapenk i tranama Malinnipa, Sait Esplinmiki tamanuitki : ku Malinmi Isht atranama. Anapenk i paiuia anaku i uacha miauar Pols Pilat, uatapliepa uaorkpie atnana ; inuani i tranana ; mitichen i uinana ; metamipa rairpa atnatkenik i uakrishuia, ku i uinana sielken, kunak aikshamsh penmipaink Pshetpa nuitkenik, tlarpa rtopa ; kunenik i uinamta, i nattuntamta tinan uakrishnan ku atnanin.

Ku mesh emanak Sait Esplinan, Sait Ek-lisnan Katoliknan, Komunionan Tesainan, koir patranasha tinma Laplitaski, ku tlarpa uakrishuita tinma erue atnatkenik ku kualesim pa uata uakrish. Ikush i ua neemi temna.

PINATAMAPAISHKTPAMA TANAMUTEM.

In'nesh pinatamapaishksha Roemi Miauar-
 nmiào nchinmiào, rtonmiào; shirmmiào Ma-
 linmiào kualesim temainmiào, shirmmiào Mi-
 shel Arkashnmiào, shirmmiào Sai Pafismi-
 ào; shirmamiào Apotinamiào, Sai Pielnmi-
 ào, Sai Polnmiào, ku tlarnmiào roemipaman-
 miào tinmiào, ku emiok enmiào pshictiào,
 in'nesh chiluit aküia prütki; nattunki; kut-
 kutki, kutkutnalki; enmiki chiluitki temna-
 ki; enmiki chiluitki temnaki; enmiki nchiki
 chiluitki temnaki. Kunkin nesh in'atlauiña
 shirnan Malinan kualesim temainan, shirnan
 Mishel Arkashnan, shirnan Sai Patisnan,
 shirnan Lesapotnan, Sai Pielnan, Sai Polnan,
 ku tlarnan roemipaman tinan, ku emiok en-
 miào pshictiào amatesh tanamutemk Roemi-
 chan Miauaran enmiei; anao i'ürenimta
 neeminan chiluitnan kutnan Roemi Miauar.
 Ku teknika nemanak i shnuaimimta, i shapa
 uinata roemichfen, anao i sapa körimta nee-
 minan temnam. Na! Roemi Miauar nchin-

nchin, rtonem, shnuaitlanem.

I UA ROEMI MIAUARNMI TAMANUIT.

1° Larnsansim nam ashukuata Roemichan
Miauarnan.

Konak nam atkrerta temnaki.

2° Chao nam ialmilki auanikta Roemichan
Miauarnan.

Kushri'm'chao tun ialmilki auanikta.

3° Shir nam naknuita Sapaluitnan.

Tanamutemki.

4° Ao nam atkrerta emimiknan pshetnan
ku pchanan.

Kunkin nam uata tlekuue uakrish.

5° Chao nam shin aoiatnata chilutki kut-
kutki.

Kushri'm'chao tukin temnaki.

6° Chao nam uatatuaita emikink uao-
noksheshki.

Kushri'm'chao tukin temnaki.

7° Chao nam paruita tenormami tinmami.

Kushri'm'chao tun naknuita anakuish
paruish.

8° Chao nam chiluit tamunta tenormami
tinmami.

Kushri'm'chao cheshkta.

9° Chao nam pruita penuiao aietin.

Lemaliashpasim.

10° Chao nam tun atkerta tenormami tin-
mami.

Anakuish paruish.

EKLISMI TAMANUIT.

1° Shir nam naknuita Lepetnan tanamu-
temki.

Anakuish i ua tamanuit.

2° Ao nam uinata Lamesiao kualesim Sa-
paluitpa.

Kushri Lepetpa.

3° Ao nam uinata pinatamapaishktiao.

Kualesim lesram anuimpa.

4° Ao nam unepta eminiknan Anitlan kua-
lesim Pakpa.

Koirki temnaki.

5° Katerta ku Pishinpa tkuatash nam uata ;

Kushri Lekarempa.

6° Pamamipa ku ptaminshpa uaotuktpa.

Chao nam tkuatata nukuetnan.

7° Ao nam tun anida Eklisnab.

Kualesim tesram anuitpa.

SESU KLINMI PLAR.

Tosras i uamsh Sesu, Klinmi, Plar; Pa-
tem, Rtoanilla, Lukaristi, Laplitas, Atna-
tatanimamiplar, Ort, Maliash.

TEMNANMI KUTKUT.

Pinipt i ua temnanmi kutkut. Nars i ua
nuitkanmi pruitnmi kutkut.

1° Na! Roemichnik Miauar, imksa, nam
sapsikuana cuai Eklisnab, kunkin nesh ink
nuitka pruisha temnapa ilariao Eklisnabiao
nattuniao, kushri'sh. tamanuitiao, amakush-
ri'mk nuitka nattuna.

I UAKRISHNMI KUTKUT.

2° Na! Roemichnik Miauar, kush nesh
ua temna, ao ink shir tranata entikink shir-

ti nishki, ku Sesu Klinmiki, kunkin nesh
nk uinata roemichen paish nesh in'atuanata
emin'an tamanuitnan, amakushri'm'nuitka
naituna.

ATAUITNMI KUTKUT.

3° Na! Roemichnik Miauar, im'na'ua
mksa shir, panakrit shir, kunkin mesh in'a-
tauisha emanak temnapa; kush t kenika
emiok atautiao in'atkrersha tlarmaman tin-
maman ashakushri'nk pina atkrersha.

PINASHNUAINMI KUTKUT.

4° Na! Roemichnik Miauar, enmi Pshet,
nchiki nesh nartisha enmipa chiluititpa kaao
na'uamsh shirnenk ku nam shiuatnoshamsh
chiluititnan. Shnuainem inak, urenim en-
min chiluititnam; kush mesh, atlauisha ema-
nak Sesu Klinmiki enmiki Uakrishanitlaki.
Ku kush nesh ua temna, emikink shirki
nishki, chaoka'sh chiluitita, ao nesh akuta
penitasnan.

MALINMI LITANI.

Roemi Miauar.	}	shnuainem	
Sesu Kli.		neemin.	
Roemi Miauar.			
Sesu Kli, meiarom		neemin.	
Sesu Kli, i akum		neemin atlautiao.	
Roemi Miauar Pshet,	}	shnuainem	
Roemi Miauar Isht, tinma-			neemin.
man uakrishanitla,			
Roemi Miauar Sait Espli,			
Sait Trinite lars aokuelt		Roemi Miauar. "	
Sait Mali,		tanamutemk neemiei.	
Sait Roemi Miauar		mi pcha. "	
Sait Temai tlarpa		temaipa, "	
Sesu Klinmi pcha,		"	
Roemichniknishnmi		pcha "	
Koirnenk pcha,		"	
Uatatuialnenk pcha,		"	
Temainenk pcha,		"	
Atauitas pcha,		"	
Anitlanmi pcha,		"	
Uakrishanitlanmi		pcha, "	

Shir tumiotlanenk temai tanamutemk neemiei	
Skaonenk temai,	"
Sapsikuatas temai,	"
Rtonenk temai,	"
Shnuaitlanenk temai,	"
Nuitkanmi pinakrenutauas,	"
Kunaknmi aikauas,	"
Kuatlatnmi anitla,	"
Shirpama uapsorpama titanas,	"
Skao shir titauas,	"
Shirpama tanamutempama titauas,	"
Shirnenk roemipama natit,	"
Tapitnmi nit uakrishanitla,	"
Koirnenk nit uakrishanitla,	"
Talanmi mareshnmi nit uakrishanitla,	"
Roemipa uaspas,	"
Rairas raslo,	"
Paiuitmaman uakrishanitla,	"
Cehiluititlaman shiranitla,	"
Shnuaimaman shapakuatlatla,	"
Petlanimaman roanitla, (metam)	"
Lesashmami miauar,	"
Patriarshmami miauar,	"
Propetmami miauar,	"

Apotmami miauar, tananutemk neemie.
 Martirmami miauar,
 Kopesormami miauar,
 Temaimami miauar,
 Tlarmami roemipaniami tinmami
 miauar,
 Koirnenk miauar,

Roemi Miauarnmi Isht neemin uakrishā-
 nitla mciarom; Sesu Kli i akum neemin at-
 lautiao.

Roemi Miauar, } shnuafnem
 Sesu Kli, }
 Roemi Miauar, } neemin.

Sait Mali Roemichnik Miauarnmi peha
 tananutemk neemie.

Kunkin nuitka i tranata Sesu Klinmi nish
 neemiao.

Nā! Roemi Miauar, ikush mesh nattuno-
 sha temnakenik emi natesh ua tinma; aimesh
 uakrish anik neemin, temnan ku uaonok-
 sheshnan, kunkin natesh namak kuatlata.
 Temainenk Mali kualesim i tananutemsha
 kunkin natesh chao shnuaj i kumta neemin
 Chiluitnem Uapsornem, aateshku namak

atnata ; ku tesh ashukuata shirnan kualesim-
nan kuatlatuitnan. Ikush i ua neemi temna.

NAKRITPAMA TANAMUTEM.

Shir Mali Roemichnik Miauarnmi pcha,
emainenk nam uamsh, shir nam nemanak
naknuimta : chao nam ureta neemin tanamu-
emnan. Ao nam nemanak eikenkta chiluit-
kenik. Kualesim ku ikush shir.

ASHELIS.

Roemichnik Miauarnmi metash Malinan
tamuna.

Ku Mali iak i tranana Sait-Esplinmiki.
Kuatlak Mali, &c.

Ao nesh ua Roemi Miauarnmi ashuania.
Ku ink shir tranatarnei amakushri'mk
nuitka nattunsha.

Kuatlak Mali, &c.

Sesu Klinmi Roemichniknmi uaonokshesh
tranama.

Ku neemipa aikma.

Kuatlak Mali, &c.

Sait Mali Roemichnik Miauararmi pcha tanamutemk neemiei.

Kunkin nuitka i tranata Sesu Klinmi nish neemiei.

Na! Boemichnik Miauar iartatam eminan shirnan nishnan neemipa temnapa, aateshku namak ashukuenia Sesu-Klinminan tranatuitnan uanonkshesha ashnmiki tamunki, Sesu Klinmiki paiuitki namak uianauitata sieliao.

Ao natesh namak ashirsha Pshetnan, ku Ishtnan, ku Sait Esplanan.

Anakushri'uacha miui shirni, anakushri i u'ichikook ku kualesim. (metam.)

TKUATATPAMA TANAMUTEM.

Uinam Miauar Roemichnik, uinam enmipa temnapa; nanam shir temnan, nanam shir uapsor, nanam shir tkuatat. Chao nesh anachare ialmilki tkuatata. Shir Mali Roemichnik Miauararmi pcha tanamutemk neemiei.

PENUPAMA TANAMUTEM.

Uinam Miauar Roemichnik, uinam enmi-
 a temnapa, nanam shir temnan, nanam
 shir uapsor, nanam shir penutas. Enmi tem-
 a i uata eminik naknuish penupa. Shir Ma-
 Roemichnik Miauarumi pcha tanamutemk
 neemiei.

Roemi Miauarumi ash naknuitla tliks
 penutesh, lakrairim, naknuim, cuai shapa
 inam, nanam.

PAIUITMAMIEI TANAMUTEM.

(Shaplepa.)

In'nesh nuitkasha, &c.

Neemi Pshet, &c.

Kuatlak Mali, &c. (metam.)

Ao natesh namak ashirsha, &c.

Neemi Pshet, &c.

V. Paiuitmaman uakrishanista,

R/ Tanamutemk neemiei. (potemit.)

Ikush pam tanamutemta llarpa shaplepa.
Tanamutemnakritpa aontapam ikush :

Ao natesh namak ashirsha, &c.

Neemi Pshet, &c.

V. Paiuitmaman uakrishanitla,

R. Tanamutemk neemiei. (potemit.)

Ao natesh namak ashirsha, &c.

Shirnenk temai Mali, &c.

Pina shnuainmi kutkut, &c.

Shir Mali, &c.

ATNANIMAMIEI TANAMUTEM.

In'nesh nuitkasha, &c.

Neemi Pshet, &c.

Kuatlak mali, &c. (metam.)

Ao natesh namak ashirsha, &c.

Neemi Pshet, &c.

V. Roemi Miauar Sesu shnuainem, atnani-
 maman petlanimaman.

R. Ku pinminik hashuit i uianata roemi-
 chen. (potemit.)

Shaplenakritpa, aontapam :

lepa. 7. Roemi Miauar amciarom neemin atla-
uitiao.

8. Kunkin i kuatlata petlani tin emipaink
champa.

Na! Roemi Miauar Sese, ikush nam imk
nattuna miui: chao shin ialmilki i tanamu-
temta enmiao, ao mesh ichi ikook atlauisha
kunkin nam shnuaita nemanak tinmaman,
ku keteto pa atteta tertamiatpamakenik ti-
chamkenik, ku pa kuatlata emipaink kuale-
sim. Ikush nesh ua enmi temna.

UATAPLIENMI SCHET.

Na! Miauar: Na! Sese, ao mesh ichi iko-
ok atuanatatasha uataplienmipa schetpa.
Shir anianim nemanak temnan kunkin natesh
shir tananutemta, ku nam shnuaita petlani-
maman anapmak pa ua tertamiatpamapa ti-
champa. Shir Mali tananutemk neemiei
kunkin shir i mciarota Emishtan Sese nee-
min atlauitiao, ku tesh nishiika traosherta
tananutemkenik. Ikush i ua neemii temna.

*Stasiopa pa uaptemnaiksha tinma ku pa
natranasha.*

V. Ao natesh namak ashirsha Roemichan
Miauarnan.

R. Anaoret i shapa uakrishuia tinmaman
pinmikink uataplieki.

Caat i ternaotisha Cemuk Tatpas.

Neemi Pshet, &c. Kuatlak Mali, &c.

V. Roemi Miauar Sesu uaokrpie uataplie-
pa.

R. Shnuainem neemin.

V. Roemi Miauar Sesu shnuainem atnani-
maman petlanimaman.

R. Ku pinminik hashuit i uinata roe-
michen.

Kushk i tanamutemta tlarpa Stasiopa.

Shir Mali, &c.

KOMUNIOPAMA TANAMUTEM.

Na ! Roemi Miauar, nuitka'sh ink pruisha
ichinak i ua eminik uaonokshesh, eminik ti-
niuan, eminik hashuit, eminik tipinite : ikush

nesh nuitka pruisha kaaok kush nam nattuna imk, ku mesh nuitkasha emanak. Roemi Miauar, chao mish aokuetl imrush nam atkrershana inak, ku nam anachare atkrershamsh palalei. I, Roemi Miauar, atkrerta mesh tlarpa tupan; kaaok tun i ua atkrertesh ichinak tichampa? Kualesim nesh uinata mai ca emiok; chao mesh unepta Shitapamaki temnaki. Chao mesh iatnata purstki — chao mesh nita im'tualranmiao. Ataitpamaki tranatki iiranin neemin temnan emipaink tiniuanpa, kunkin natesh atnatiao nartita.

Na! enmi temna, ao i uamsh Roemipama Miauar, ku ichinamank tichampama: auanpik temnaki. Ao i uamsh, aikatashamsh neemipa temnana, ku nesh uata ink emipaink, ku nam uata imk neemipa temnana. Neemi temna i uata eminik aikauas. Ichi ikook natesh luklukruasha emanak anaku-shri'luklukruasha iamash kpesnan chishnan paiupa ichopa, kushri namacha luklukruasha emanak, neemin uakrishuitnan, namak shnu-aima tinna.



Arrête ! le Cœur de
Jésus est avec moi.

Usir auak, Chiluit Uapsor, enmipa tem-
napa i ua Sesunmi temna. Naknuie nesh ua,
chao nesh ua miauarnut ku Pshetnut. Mi-
auar nesh ua Cemuk Tatpas, ku Pshet nesh
ua Roemi Miauar Sesu, anakunminik i ua ti-
mani temna ichinak. Penk nesh inak i nak-
nuisha Chiluit Uapsormikenik.

1.

2.

3.

9

Nampash.

NOELPAMA.

1. I shnuai natesh tranana narsnmiki,
 Ku tesh i shnuaina^{neemin} } [napam.
 Roemi Miauar Sesu, } napam.
 Anaku i uinama }
 Tin i tranama.

2. Nchiki natesh kuatlasha Noelpa. (napam)
 Kaao uakrish i tranama, }
 Aateshkuⁿkin namak, } napam.
 Tenoriao uakrishuitiao, }
 Uakrish tranama.

3. I Noelpa uakrish i tranama Sesu (napam)
 Ku roemichenik, }
 Ashma tichamiao } napam.
 Pa uinama, nemanak }
 Pa tamunatama.

4. Petleempa uakrishi tranama Sesu (napam)

Ku nam i uaresha,	}	napam.
Shir nam imk uinata		
Ku nam tlariao nishiao		
Shir atlauita.		

NOELPAMARE.

(*Air: Adeste fideles.*)

1. Amatesh Petlanima,
Uinam Petleemken
Krenutesh Sesunan
Uakrish tranama.
I ua mianash
Kushri Roemi Miauar.

TLARMA. Amatesh tanamutemtk,
Nuitkaki temnaki.
Amatesh tanamutemtk
Roemi Miauarnmiao.

2. Roemi Miauarnmi Isht,
Iua ichi Mianash

Pinmikink atautiki
 Uakrish tranama,
 Ku Malinmipa
 Uaonokshesh uneppa.

Tlarma : Amatesh, &c.

3. I uinama neemiao
 Nemanak eikenktesh
 Chiluititkenikei
 Ku clukshkenikei
 Pinmikink atnatki
 Uatapeliepa.

Tlarma : Amatesh, &c.

4. I, ao pam painta,
 Chao pam uata kroshem ;
 Kaao i ua nchi
 Tamanuitla Sesumen.
 Ku pam naknuita
 Pinmin tamanuitnan

Tlarma : Amatesh, &c.



KAREMPAMA, KU PENETIKSIOPAMA.

1. Na! Shnuaitla Roemi Miauar, * mcia-
rom neemin atlauitiao.

2. Chiluititla tesh uacha, * kunkin natesh
nchiki nartisha.

Parse Tomine, parse populo tuo; ne in e-
ternum iraskaris nopis.

3. Na! Shirnenk Uakristhanitla, * urenim
neemin chiluitnan kutnan.

4. Chaoka tesh chiluitita, * kualesim ma-
tesh emanak atautita.

Parse Tomine, &c.

5. Ao natesh namak ashirsha, * Pshet-
nan, ku Ishtnan, ku Sait Esplanan.

6. Anakushri'uacha miqi shirni, * ana-
kushri'uichi ikook ku kualesim.

Parse Tomine, &c.

SESUNMPAO.

(*Air: Venez. Divin Messie.*)

Amesh uinam Sese,

Neemi Uakrirshaniſſa.
Amesh uinam Sesu,
Uinam, uinam, uinam !

Amesh uinam,
Uihaiakem.
Nemanak shapa uakrishuim,
Amesh uinam
I shnuainem.
Mestashma Sataonmi
Nemanak shapa tkraokritash,
Etok pa nattonosha,
Uinam, uinam, uinam !
Amesh uinam, &c.

ROEMIPAMAIAO TICHAMIAO.

(*Air : Partant pour la Syrie.*)

Na ! Roemipama Ticham,
Mun koak mesh krenuta.
Na ! Roemi Miauar,
Emipaink mun nesh usta.
Na ! Shirnenk Ticham,
Ao mesh laletuisha.

Uaptasie'sh uatarnei }
 Ku nesh ueinatarnei. } napam.

MALINMIPA RAIRUITPA.

1. Raimashash nesh
 Uakrish nesh ua
 Roemi Miauarnmiei
 Raimashash nesh
 Uakrish nesh ua
 Ku Malinmiei .
 Na! Ibla shir rairuit,
 Na! Ibla shir rairuit.
 Shir rairuit, shir rairuit.
 Na! Ibla shir rairuit.

2. Uneppam, uneppam
 Enmin temnan Ibla ;
 Uneppam, uneppam
 Enmin pruitnan Ibla ;
 Kunkin nesh chao pruita
 Chiluititiao, Ibla,
 Kunkin nesh chao,
 Kunkin nesh chao

Pruita chiluititiao.

PASIOPAMA.

1. Amesh uinam shir Petlani
 Sesunmipa paiuitpa.
 Amesh uinam ku nartim
 Kaa emikink chiluitki,
 Tliks erue atnatata :
 Amesh tertamiata
 Emikink ataitki
 Pinminan ataitnan.

2. Tliks Herotnmipa nitpa
 Piernam i lekoksha.
 Uiechuniki temnaki
 Sesunan i shiausha.
 Ku teknika tkertlaki
 Sesu ku nishieki
 Krenutki i nattonosha
 Pierneminan femnan



NOELPAMA.

(*Air : Les Anges dans nos campagnes*)

1. Roemi Miauarnmi Isht Sesu
Ikook i uianauisha.
Ikush i ua ashmami tamo,
Nemanak pa tamunatama.
Kloria in ekselsis Teo. (napam.)

2. Shir i ua ichi mianash,
Ku Sait Esplimiki nishki
Tin i tranana Malinmipa.
Tinmamiao atautiao.
Kloria in ekselsis Teo. (napam.)

3. Ao namtk nuitka anita
Sesunan neemin temnan.
Tlaner i uata chei-chei kutkut,
Sesusim namtk atautia.
Kloria in ekselsis Teo. (napam.)



TANAMUTEMPAMA

SAPSIKUAT.

I. LEKSIO.

ROEMI MIAUAR.

Shin nam'manak anima?

Inak nesh anima Roemichnik Miauarnem,
ku'sh penmre kualesim i naknuishamsh.

Tuiiao nam'manak anima?

Inak nesh anima shukuatesh, atauitesh,
meiarotesh Roemichan Miauarnan, kunkin
nesh uinata roemi'chen ashaku ink atnata.

Tun i ua Roemi Miauar?

I ua Roemi Miauar kupenk nchi Miauar
anapenk i tamenuia roemipaman tichamnan

ku ichik tichamnan.

Metl i ua Roemi Miauar?

Lars aokuetl i ua Roemi Miauar.

Mish aua uaonokshesh?

Chao aua uaonokshesh, temnasim i ua,
aolak-aolak.

Mam i ua Roemi Miauar?

I ua Roemi Miauar roemipa tichampa, ku
ichinak tichampa, ku tlurpa nkpa.

Tun i akrenushamsh Roemi Miauar, ku
tun i shukuashamsh?

Tlar tun i akrenushamsh Roemi Miauar,
ku tlar tun i shukuashamsh, tlapre neemipa
mitipa temnapa.

Mima i ua na Roemi Miauar?

Kualesim i uacha, ku kualesim i uata.

Mun i atnata Roemi Miauar?

Nakrial i ua Roemi Miauar, ku chao mun
i uatteta.

Mish i ua shir Roemi Miauar?

I, shirnenk i ua Roemi Miauar.

Mish i ua rto Roemi Miauar?

I, rtonenk i ua Roemi Miauar; tlaman
anima pinmikink pruitkisim.

II LEKSIO.

LASAIT TRINITE.

Melt i ua shakuin Roemi Miauarpa ?

Metao i ua shakuin Roemi Miauarpa :
Pshet, ku Isht, ku Sait Espli — kush i ua-
niksha Lasait Trinite.

Pshet i ua na Roemi Miauar?

I, Pshet i ua Roemi Miauar.

Isht i ua na Roemi Miauar?

I, Isht i ua Roemi Miauar.

Sait Espli i ua na Roemi Miauar?

I, Sait Espli i ua Roemi Miauar.

Metao restr i ua Roemi Miauar?

Chao, metao i ua shakuin, ku lars aokuetl
Roemi Miauar.

Mish i ua nars mai mima, mai nchi, mai
rto?

Chao, kekuskesim pa ua tlarpa tupan.

III LEKSIO.

TLARNMI TUMIN ANIANIT.

Shin i ania tlar tun roemipa tichampa, ku ichinak tichampa?

Roemi Miauar i ania tlar tun roemipa tichampa, ku ichinak tichampa.

Metlpan tikuipa ku tlar i naonakria Roemi Miauar?

Ptarninshpa tikuipa ku tlar i naonakria Roemi Miauar.

Mish i tkueisauia Roemi Miauar.?

Chao i tkueisauia Roemi Miauar, anaoret pruitkisim tlar i ania.

Tun i unepa Roemi Miauar anakunkink i ania tlar tun?

Chao tun i unepa Roemi Miauar. Lesram i pruina ku tlar tun anie i tranana.

IV LEKSIO.

ATAO KU EP.

Metl uinsh ku metl aiet uuit i ania Roemi Miauar?

Lars uinsh ku lars aiet uuit i ania Roemi Miauar.

Shin pa uaniksha?

Atao ku Ep pa uaniksha.

Mish pa uacha shir?

I, shir pa uacha, ku chiluititnut; paiuia
ku atnanal.

Menan pa uacha?

Pa uacha shirpa tichampa, Paratiterestrpa.

Mish i nattuna Roemi Miauar, Ataonmiao
ku Epmniao?

I natranana Roemi Miauar: ichi i ua pa-
lalei atit. Tkuatata pam tlar: eminik matesh
ua. Nars i ua elukuas pachupa i patuksha.
Chao pam tkuatata ikunamank: paish pam
tkuatata ku pam ashukuata atnatnan.

V. LEKSIO.

ASHMA.

Shimen pa ua Ashma?

Pa ua Ashma Roemi Miauararmi metashma

Mish pa ua uaonoksheshie?

Chao pa ua uaonoksheshie, temnasim pa
ua.

Shin i ania Ashmanan?

Roemi Miauar i ania Ashmanan.

Mish pa uacha shir tlarina?

I, shir pa uacha tlarina.

Mish pa tranana shir kualesim?

Chao pa tranana shir kualesim, tetushma
chelehel pa tranana, ku nchi pa chiluitia.

Ku mish i mia chiluitmaman Ashmanan
Roemi Miauar?

Iarena pemanak emperpamaiao elukshiao.

Mal pa uata kunak?

Kualesim pa uata kunak.

Mam pa ua shirma Ashma?

Pa ua shirma Ashma roemipa tichampa
kualesime, anaoret chiluitialka pa ua.

Tun pa akusha roemipa tichampa?

Pa tananutemsha ku pa uampsha Roemi
Miauarminan shiruitnan.

Mish palesram pa uinashamsh ichinik ti-
chamiao?

I, kualesim pa uinashamsh ichinik ti-
chamiao.

Tun pa akusha?

Anakuelt i ua tin ichinak tichampa ku

kuelre i ua Ash naknuitesh tinmaman, kun-
kin i uaniksha Naknuitla Ash.

VI LEKSIO.

ATAONMI CHILUITIT.

Mish taminoa pa tranana shir Atao ku Ep?
Chao taminoa pa tranana shir Atao ku
Ep: caat, ku pa chiluitia.

Mishnin pa chiluitia?

Pa krosheamna tamanuitiao. Pa unepa atit
pachupamanmi elukuasnni ku pa tkuatana.

Shimikink alsikuatki pa tkuatana atitnan?

Chiluit Uapsornmiki alsikuatki pa tkuatana atitnan.

Mishnin i shapa tkuatana?

I pina tlamaika uarpushnmipa uaonok-
sheshpa, ku i enna Epnan: cho, amesh tkuat-
tak atitnan. I cheshksha Roemi Miauar;
chao pam mun atnata. Paish pam tkuatata,
ku pam tlar tun ashukuata.

Mish i paina uarpushnan Epnem?

I, i unepa atitnan ku i tkuatana; kushri i

saipa Ataonan ku pencha i tkuatana.

Tun i uaniksha kupenk chiluitit?

I uaniksha kupenk uuitpama chiluitit.

Mish i uachaksha neemiao temnaiao?

I, i uachaksha tlarmamiao temnaiao aateshku namak nakrish tranasha.

VII. LEKSIO.

UAKRISHANITLALANMI TAMO.

Tukin krap i tranana' roemipama uaspas, ku tukin acharelipe i tranana amperpama pesh?

Ataonmiki chiluititki.

Tun i ua roemipama ticham siel?

I ua roemipama ticham siel, anakunak i ua Roemi Miauar, ku shirma ashma, ku tlarma shirma petlanima.

Tun i ua amper?

I ua amper mitipama eluksh anakunak i ua Chiluit Uapsor ku chiluitma Ashma, ku tlarma chiluitma tinma.

Mal pa uata shirma tinma sielpa?

Kualesim pa uata shirma tinma sielpa.
 Mal pa uata chiluitma tinma amperpa?
 Kualesim pa uata chiluitma tinma amper-
 pa.

Mish i nattuna Roemi Miauar Ataonmiao
 anaku i chiluitia.

I natranana Roemi Miauar: shnuai pam
 uata ichinak tichampa. Latnata pam, ku
 pam kupailk tkuatata, ku pam erue atnata.

Tun anachare i enna?

Anachare i enna: chao pam uata shnuai
 kualesim. Nars aiet i tranata, ku i uatikasha-
 ta uarpushnmipa tlarmtorpa; ku pam emanak
 i shapa ashta sieliao pinminik Isht.

Mish keto i tranama kunminik aietnmi
 mianash uakrish anitesh tinmaman?

Chao. Piniptit potaptit anuikt ku kupailk
 i tranama.

VIII. LEKSIO.

UAONOKSHESHFA TRANATUIT.

Mam shakuin Lasait Trinitenmi anapenk

i tranama tin?

Shakuin Isht.

Shin i uaniksha?

Sesu Kli Neemi Miauar.

Mishnin i tranama tin?

Malinmipa nauatpa i unepa uaonokshesh
ku hashuit anakupenre i ua neemi uaonok-
shesh ku hashuit.

Shimikink kutki ku i tranama tin?

Sait Esplinmiki kutki i tranama tin.

Mun i tranama tin?

Noelpa.

IX. LEKSIO.

SESU KLINMI PETLAT, AOTT KU APOTMA.

Mal i tranana ichinak tichampa Sesu Kli?
Metaptit pui uina metat.

Anaku i uacha metaptit pui, tun i pina
shapa kuia?

Anaku i uacha metaptit pui, i pina shapa
petlana Sai Shapatismiki.

Petlatnakritpa ku min i uinana?

Aiparken i uinana, tinakenik, pina shapa
anauitesh pinipitit uaotukt.

Pinashapaanauitnakritpa tun i kuia?

Pinashapaanauitnakritpa tinaken i torna,
ku Cemuk Tatpas i shapa tranana potemo
uina napo auinshtmaman.

Mal i sapsikuana komanak Cemuk Tat-
pasmaman?

Metat anuikt.

X. LEKSIO.

UAKRISH ANITUIT.

Tupan i atnana Sesus Kli?

Uatapliepa i atnana Sesus Kli, uaokripie,
tlar i uanana pinminik tiniuan.

Tuiao i atnana Sesus Kli?

Neemie i eikenktesh chiluititkenikei.

Shimiei i atnana Sesus Kli?

Tlarmamiei tinmamiei i atnana Sesus Kli.

Tukin nemanak i shapa uinasha roemi-
chen?

Pinmikink atnatki uatapliepa.

Mun i atnana Sesa Kli?
 Shirpa Parnamipa i atnana Sesa.

XI. LEKSIO.

PAK. AASIO. PATKOT.

Mal inuani i tranana atnatkenik Sesa?
 Metat uaotukt.

Mam kupenk i uaniksha rairuit anakunak
 i uakrishuia?

I uaniksha Pak.

Mal ichinak i tranana uakrishuitkenik?

Piniptit uaotukt i tranana uakrishuitkenik
 ku kupaik i uinana roemichen.

Mam kupenk i uaniksha rairuit anakunak
 i uinana roemichen?

I uaniksha Aasio.

Shiu i uetana Apomaniua Senuketi?

I uetana Sait Esplinau Apomaniua, pe-
 manak roauitesh temnan, ku sapikuatesh
 tlaman tamanuitnan.

Mam kupenk i uaniksha rairuit anakunak
 i uianauia Sait Espli?

I uaniksha Patkot.

XII. LEKSIO.

NAKRITPAMA NATTUNOT.

Mish chao ka i uianauita Sesu Kli ichinik tichamiao ?

I, lesramsimka i uianauita ichinik tichamiao.

Tuiaio i uianauita ?

I nattunotamta tinan uakrishnan ku atnain.

Mish pa tranata tinma Sesu Klinmiki nattunotki ?

* Anapmak pa uacha shir, ku pa uinata romichen-anapmak pa uacha chiluit, ku pa uinata amperken.

Mal pa uata Roemi Miauarnmipa shirna tinma ?

Kualesim pa uata Roemi Miauarnmipa shirna tinma.

Mal pa uata elukshpa chiluitma tinma ?

Kualesim pa uata elukshpa chiluitma tin-

ma.

XIII LEKSIO.

APOTMA.

Mish i nattuna Apotmamiao Sese anaku
i uacha caka tortiao?

Ikush i nattuna Apotmamiao Sese : uinata
pam tlarmamiao tinmamiao, ku pam sapsik-
uata tinmaman. Chao pam mun uiechuta
tukin. Anapmak pa unepta eminik nattun, ku
pa uata petlani nuitkaki tempaki, pmak pa
uinata roemichen ku pa uata enmipa kua-
lesime.

Patkotnakritpa tun pa ania Apotma?

Patkotnakritpa pa ania peminik tanamu-
tem.

Nattunk Apotnami tanamutem?

In'nesh nuitkasha, &c. (Akrenunk pashi-
nan 48.)

Tuiei pa ania tanamutem?

Sapsikuatesh tlarnan tinan, lars aokuetl i
ua Roemi Miauar ku kushri i ua larssim

Tanamutem, ku lars schet roemipamaiao tichamiao.

Tun i uaniksha kupenk schet ?

I uaniksha Eklis Katolik.

XIV LEKSIO.

EKLIS KATOLIK.

Tun i ua Eklis Katolik ?

I ua Eklis Katolik paiuum tlarmami Sesu Klinan atautlami, tuanenitlami, ku akrenutlami Papnan anakuish Sesu Klinmi metash ku Eklisnini mi auar krenuni ichinak tichampa.

Mish i ua metl Eklis ?

Lor i ua Eklis, palalei, tenor-tenor.

Mish i ua kekuskesim shir ?

Chao, lars aokuetl i ua shir.

Mam anakupenk i ua shir ?

Pinmikink timashki i pina shapa ashukusha. Pilmiliksa ikush aua timash.

Mish aua timash ?

Peliksa i ua Katolik, Apostolik, Romen.

Tun i ua nattun Katolik ?

Anapenk i ua tlurpainkpa.

Tun i ua nattun Apostolik ?

Anapenk i uianauisha Apotmamikenik.

Tukin i pina uaniksha Romen ?

I pina uaniksha Romen, narski tichamki Romki, anakunak i ua pinminik Miauar krenuni ichinak tichampa, Pap, Sesu Kliumi metash.

XV. LEKSIO.

TENOR TANAMUTEM.

Mish i ua cuai tanamutem anapenk i ua chao Cemuk Tatpasmami.

Chao i ua cuai tlar tenor-tenor tanamutem.

Tuiaio i ua chao cuai Soiapunmi tanamutem ?

I ua chao cuai Soiapunmi tanamutem, anaoret chao i uianauisha Apotmamikenik.

Muman i ua, ku menik i uianauisha ?

Chemte i ua anakuish kolauitima, ku i ttuarna krosheimutkenik, ku chelcheluitke-

nik.

Tuiao i ua chao Katolik ?

Anaoret i ua larspasim tichampa, chao i ua thurpainkpa.

Tuiao chao i ua Romen ?

Anaoret chao i temaksha Papnan anakuish Eklisnmi Miauar ku Sesu Klinmi metash ichinak tichampa.

Mish i uianauita roemichen tenor tanamutemla ?

Chao mun i uianauita roemichen tenor tanamutemla : kroshemuitpamapa schetpa i uianinsha kunkin taminoa i uiatlamaiksha.

Ao restr aotika i kutkutsha anaku tenor i tanamutemsha ?

I, aotika i kutkutsha anaku tenor i tanamutemsha, anaoret amchinik Roemi Miauarnuikenik i tkueisauisa ku chao mun i nata iushni sielpa.



XVI. LEKSIO.

ROEMI MIAUARNMI KU EKLISNMI
TAMANUIT.

Metl i ania tamanuit Roemi Miauar?

Potemit i ania tamanuit Roemi Miauar.

Nattunk konak tamanuitnan?

Larsnansim nam ashukuata Roemichan
Miauarnan. &c. (Akrenunk pashinan 50.)

Metl i ua Eklisnmi tamanuit?

Tosras i ua Eklisnmi tamanuit.

Nattunk Eklisnmin tamanuitnan?

Shir nam naknuita Lepetnan taamu-
temki. &c. (Akrenunk pashinan 51.)

Anapenk shir i naknuisha Roemi Miauar-
nmin ku Eklisnmin tamanuitnan, min i uina-
ta anaku i atnata?

I uinata roemichen ku kunak i kuatlata
kualesim Roemi Miauarnmipa.

Anapenk chao i temaksha Roemi Miauar-
nmin ku Eklisnmin tamanuitnan, ku min i
uinata?

I uinata amperken, ku kunak taminoa i

uata Chiluit Uapsornmipa.

XVII. LEKSIO.

TANAMUTEM.

Mish namaknenk shir atuanata Roemi Miauarnmin ku Ekliśnmin tamanuitnan?

Chao: uaiauishatesh nishnmi, kupenk i ua nish Sesu Klinmiki paiuitki, ku pinmikink atnatki neemiei uatapliepa.

Tukin natesh uata nishie?

Tanamutemki ku Tanamutempamaki Plarki.

Tun i ua tanamutem?

I ua tanamutem tranat aateshkunkink namak shapa uinasha neemim temnan, neemim uapsornan Roemi Miauarnmiao, ku tesh atlauisha patuiao.

Ichinak i tanamutemta tin tlarpa tanamutempa.

Shin penrush i sapsikuana tanamutemnan?

Sesu Kli Neemi Miauar penrush i sapsikuana tanamutemnan.

Mish i ua rto tanamutem ?

I, rtonenk i ua tanamutem; ikush i tinana miui Sesu : tanamutemta pam temnakenik enmiao, kush keteto iakuta emiok atlautitiao.

XVIII. LEKSIO.

CHILUITIT.

Tun i ua chiluitit ?

I ua chiluitit kroshemuit Roemi Miauar-nmiao tamanuitiao ; kushri, i uaniksha temnanmi paiuit.

Metl i ua chiluitit ?

Nipt i ua chiluitit: nars i ua uuitpama, ku nars i ua ichiikumankpama chiluitit.

Tun i ua uuitpama chiluitit ?

I ua uuitpama chiluitit anapenk i uianauishsha Atanmikenik neemiao temnaiao.

Tun i ua ichiikumankpama chiluitit ?

I ua ichiikumankpama chiluitit aateshku namakneak akusha neemiki temnaki.

Metl i ua ichiikumankpama chiluitit ?

Nipt i ua ichiikumankpama chiluitit.

Nars i ua piatnatla, ku nars i ua shukruatnitla hashuitnan.

Tun i ua chiluitit piatnatla?

I ua chiluitit piatnatla anapenk i shapa uresha Roemi Miauarnmin nishnan, ku nemanak i shapa uinasha amperken.

Tun i ua chiluitit shukruatnitla?

I ua chiluitit shukruatnitla anapenk i shapa shukruatsha Roemi Miauarnmin nishnan neemipa temnapa.

Metlkin pa chiluitisha piatnatlapa, ku pa uinasha amperken?

Larski aokuetlkin, paish kushk pa atnatarnei.

Metl i ua chiluitit mai nchi anakuish ennom?

Tosras i ua mai nchi chiluitit anakuish ennom : chelcheluit, tuatsareuit, uatatuit, pinakaiuatit, kenepuit, liuatit, etokuit.



XIX. LEKSIJ.

TANAMUTEMPAMA PLAR.

Tun i ua Tanamutempama Plar?

I ua Tanamutempama Plar takuin nars krenuni, Sescu Klinmi nish neemiei shir shapa tranatesh.

Metl i ua Tanamutempama Plar?

Tosras i ua Tanamutempama Plar: Patem, Rtoanitla, Lukaristi, Laplitas, Atnatanimami Plar, Ort, Maliash.

Tun i ua Patem?

I ua Patem Sescu Klinmi Plar anapenk auat i shapa tranasha tlarnan chiluititnan uiitpaman neemipa temnapa, ku nemanak anianisha Kretia, ku Ekklisnmi mianash.

Tun i ua Rtoanitla?

I ua Rtoanitla Sescu Klinmi plar anakunkink i uianauisha Sait Espli neemiao temnaiao, ku pinmikink nishki rto i tranasha neemi temna, nemanak anianisha shirnenk Kretia.

Tun i ua Lukaristi?

I ua Lukaristi Sescu Klinmi Plar anakunak i ua nuitka Sescu Klinmi uaonokshesh, ku tinnuan, ku hashuit, ku Tipinite, tlamai i ua saplilpa ku uainpa.

Tun i ua Laplitas ?

I ua Laplitas Sescu Klinmi plar anapenk auat i shapa tranasha tlarnan ichiikumank-paman chiluititnan.

Tun i ua Atnatanimami Plar ?

I ua Atnatanimami Plar Sescu Klinmi plar anakunkink mai rto i tranasha temna, ku palesram i uakrishuisha atnatanimami uaonokshesh.

Tun i ua Ort ?

I ua Ort Sescu Klinmi plar anakunkink nars tin i tranasha Cernuk Tatpas, ku rto aua temna taminoa sapsikuatesh tinmaman.

Tun i ua Maliash ?

I ua Maliash krtetnenk tanamutempama ualakrikauas anakunkink larsimka uaonokshesh i tranasha nars uinsh narsin aietin.



XX. LEKSIO.

RTOANITLA PLAR.

Tun i ua Rtoanitla Plar?

I ua Rtoanitla Plar Seseu Klinmi plar^{ana} kunkink i uianauisha Sait Espli neemiao temnaiao, ku pinmikink nishki rto i tranasha neemi temna, nemanak anianisha shirnenk Kretia.

Tun i ua Sait Espli?

I ua Sait Espli shakuin pachutla Lasait Trinitenmi.

Tei i uianauisha Sait Espli neemiao temnaiao?

I uianauisha Sait Espli neemiao temnaiao nemanak rto shapa tranatesh.

Mishnin rto i tranasha neemi temna?

Roemi Miauarmmiki nishki ku chaoka i pinatluiasha tanamutemkenik Petlani tin.

Shin i plarisha tinmaman Rtoanitlaki Plarki?

Mosenial, Cemuk Tatpasmami Miauar.

Mishnin i plarisha?

1. I tanamutemsha plaritanimamiei.
2. I uanpisha Sait Esplinan anaku roemichen i kusha epap.
3. I timasha shuapa tanamutempamaki ualichtki.
4. I timasha uataplienmiki timashki.
5. Tluei i papklksha tpushpa, ku i natranasha : Shir nam kualesim naknuita Roemi Miauarnmin paaniroetnan.

Tuiao i tanamutemsha plaritanimamiei?

I tanamutemsha plaritanimamiei shapa haiktesh Sait Esplinan pemipaik temnapa.

Tuiao i timasha shuapa?

I timasha shuapa uiiat akutesh Chiluit Uapsornan, kushri, kunkin chaoka i pinatluiata tanamutemkenik Petlani tin.

Tuiao tluei i papklksha tpushpa?

Tluei i papklksha tpushpa kunkin kualesim irat auata temna, ku chaoka mun i shukuata luiatitnan, ku taminoa i laakta tenor-maman chiluititnan.

Mish i chiluitisha tin anaku chao i luklukuasha Rtoanitlan Plarnan?

I, nchi i chiluitisha anaoret i ua nchi nish,

ku i ua luklukruatesh nechiki temnaki.

XXI. LEKSIO.

PINATAMAPAISHKT.

Tun i ua pinatamapaishkt?

I ua pinatamapaishkt tranat anakunkink pima tamapaishksha tinma pretfnmiao meta-ninmiao Epeknmikenik unepatesh apsolutio-nan.

Tukin shir i tranasha pinatamapaishkt?

Cuai i pina nattunosha pinmipaink tem-
napa anaku i pruisha pinmiok chiluititiao. I
nartisha pinmipaink temnapa ; pinatama-
paishksha pinmipaink tlarpa chiluititpa.
Chaq narsnan i shapa shukruatsha chiluitit-
nan.

Mishnin pa pimatamapaishksha?

Pu uaptemnaiksha, pimatimasha uatapli-
enmiki timashki, ku pa natranasha. *Na! en-
mi Pshet, shnuainem inak kaao nesh chiluit
akuia* : kush pa natranasha muman pa uacha
uinanonai pinatamapaishktnan; mish pa

unepshana apsolusionan o mish chao; mish pa kuia penitasnan o mish chao : pimatamapaishksha penmipaink chiluititpa anakuetl pima'shukuasha.

Mish pa natranasha pinatamapaishktnakritpa?

Pinatamapaishktuakritpa pa natranasha : *In' nesh pinatamapaishksha kunamankre chiluititpa ku enmipa chiluititpa ashakunak chao ichiikook atemnanarsha, ku enmipa tlarpa chiluititpa ashakunak akuia pellaikenik; ku nesh atlauisha Roemichan Miauar-nan kunkin inak i shnuainimta : ku mesh emanak, enmin pshetnan, penitasiao ku apsolutiao paish nam kushk imk pruitarnei.*

Mish pa natranasha tanamutemnakritpa?

Cuai pa nattunsha pretrnmiao shapnitiao : shir pa mciarosa nattunotiao tlapre i nitarnei apsolutioan, o mish chao.

Mish shir pa kutarnei paish pa chesktarnei pinatamapaishktpa?

Chao : paiu pa chesktarnei Roemi Miauar-nmiao, ku nchiki pa chiluititarnei.

Tukin shir pa unepsha apsolusionan?

Nchiki temnaki, puaġi, nartieki, k'uatlani-
ki, atlauitlaki Roemi Miauarnmiao, kunkin
pa tanamutemsha temnakénik pinashnuain-
mipa kutkutpa.

XXII. LEKSIO.

KOMUNIO.

Tun i ua Komunio?

I ua Komunio Sesu Klinmi Plar anakunak
i ua nuitka Sesu Klinmi uonokshesh, ku ti-
niuan, ku hashuit, ku tipinite, tlamai i ua
saplilpa ku uainpa.

Mish pa tranasha tinma Komunioki?

1. Larsimka pa ua Sesuin, kunkin mai
lkkap pa tranasha chiluititish.

2. Mai nchi pa rtosha shiriao.

3. Mai shir pa luklukuasha roemipaman
tichamnan.

Mish pa uatarnei tinma shir uneptesh Ko-
munionan?

Plarie pa uatarnei Laplitaski ; ku tkuata-
nal ku chinal pakkukseatkenik.

Mishnin i kutatasha Komunionan ?

1. Nchiki temnaki i lukluknasha Sesunan.

2. Shir i tanamutemsha tkrertlaki temnaki tlarpa temnanmipa kutkutpa.

Mish auata tranat Komunionakritpa?

Laruirtki temnaki i'shirta Sesunan, ku i atlauita tlariao roemipamiao nishiao.

Mish i uata Komuniokutlami tranat?

Taminoa i'temnanarta Sesunan anapenk i ua pinmipaink temnapa : mai shir i naknuita Roemi Miauarmin tamanuitnan, ku shir i shapa tranata tinmaman pinmikink shirki sapsikuatki.



183955

TAPULA.

	Pashina.
Skulitpama sapsikuat.....	5
Ititamatpama	36
Tlar tanamutem.....	45
Uampash.....	65
Tanamutempama sapsikuat.....	73
Roemi Miauar.....	73
Lasait Trinite.....	75
Tlarnmi tumin anianit.....	75
Atao ku Ep.....	76
Ashma.....	77
Ataoumi chiluitit.....	79
Uakrishanitlanmi Tamo.....	80
Uaonokshespha Tranatuit.....	81
Sesu Klinmi Petlat, Aott ku Apotma.....	82
Uakrishanituit.....	83
Pak. Asasio. Patkot.....	84
Nakritpama Nattunot.....	85
Apotma.....	86
Eklis Katolik.....	87
Tenor Tanamutem.....	88
Roemi Miauararmi ku Eklisnmi tamanuit...	90

Tanamutem.....	91
Chiluitit.....	92
Tanamutempama Plar.....	94
Rtoanitla Plar.....	96
Pinatamapaishkt.....	98
Komunio	100

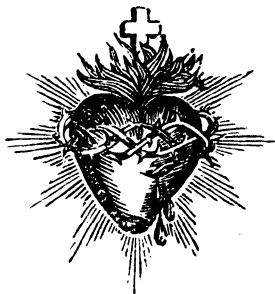


a.
 .5
 36
 45
 65
 73
 73
 75
 75
 76
 77
 79
 80
 81
 82
 83
 84
 85
 86
 87
 88
 90

TAMTLAMAIUIT.



Pashina	linea	timan	i ua :	i uatarnei.
28	2	shnuai		shnuai
50	11	emimiknan		eminiknan
55	19	cehilititlaman		chilititlaman



nei.
uai
nan
nan