

**CIHM
Microfiche
Series
(Monographs)**

**ICMH
Collection de
microfiches
(monographies)**



Canadian Institute for Historical Microreproductions / Institut canadien de microreproductions historiques

© 1994

Technical and Bibliographic Notes / Notes techniques et bibliographiques

The Institute has attempted to obtain the best original copy available for filming. Features of this copy which may be bibliographically unique, which may alter any of the images in the reproduction, or which may significantly change the usual method of filming, are checked below.

L'Institut a microfilmé le meilleur exemplaire qu'il lui a été possible de se procurer. Les détails de cet exemplaire qui sont peut-être uniques du point de vue bibliographique, qui peuvent modifier une image reproduite, ou qui peuvent exiger une modification dans la méthode normale de filmage sont indiqués ci-dessous.

- | | |
|------------------------------------------------------------------------------------------------------------------------------------------------------------------------------------------------------------------------------------------------------------------------------------------------------------------------------------------------|--------------------------------------------------------------------------------------------------------------------|
| <input type="checkbox"/> Coloured covers/
Couverture de couleur | <input type="checkbox"/> Coloured pages/
Pages de couleur |
| <input type="checkbox"/> Covers damaged/
Couverture endommagée | <input type="checkbox"/> Pages damaged/
Pages endommagées |
| <input type="checkbox"/> Covers restored and/or laminated/
Couverture restaurée et/ou pelliculée | <input type="checkbox"/> Pages restored and/or laminated/
Pages restaurées et/ou pelliculées |
| <input type="checkbox"/> Cover title missing/
Le titre de couverture manque | <input checked="" type="checkbox"/> Pages discoloured, stained or foxed/
Pages décolorées, tachetées ou piquées |
| <input type="checkbox"/> Coloured maps/
Cartes géographiques en couleur | <input type="checkbox"/> Pages detached/
Pages détachées |
| <input checked="" type="checkbox"/> Coloured ink (i.e. other than blue or black)/
Encre de couleur (i.e. autre que bleue ou noire) | <input checked="" type="checkbox"/> Showthrough/
Transparence |
| <input checked="" type="checkbox"/> Coloured plates and/or illustrations/
Planches et/ou illustrations en couleur | <input type="checkbox"/> Quality of print varies/
Qualité inégale de l'impression |
| <input type="checkbox"/> Bound with other material/
Relié avec d'autres documents | <input type="checkbox"/> Continuous pagination/
Pagination continue |
| <input type="checkbox"/> Tight binding may cause shadows or distortion
along interior margin/
La reliure serrée peut causer de l'ombre ou de la
distorsion le long de la marge intérieure | <input type="checkbox"/> Includes index(es)/
Comprend un (des) index |
| <input type="checkbox"/> Blank leaves added during restoration may appear
within the text. Whenever possible, these have
been omitted from filming/
Il se peut que certaines pages blanches ajoutées
lors d'une restauration apparaissent dans le texte,
mais, lorsque cela était possible, ces pages n'ont
pas été filmées. | Title on header taken from: /
Le titre de l'en-tête provient: |
| <input type="checkbox"/> Additional comments: /
Commentaires supplémentaires: | <input type="checkbox"/> Title page of issue /
Page de titre de la livraison |
| | <input type="checkbox"/> Caption of issue /
Titre de départ de la livraison |
| | <input type="checkbox"/> Masthead /
Générique (périodiques) de la livraison |

This item is filmed at the reduction ratio checked below /
Ce document est filmé au taux de réduction indiqué ci-dessous.

10X	12X	14X	16X	18X	20X	22X	24X	26X	28X	30X	32X
							✓				

The copy filmed here has been reproduced thanks to the generosity of:

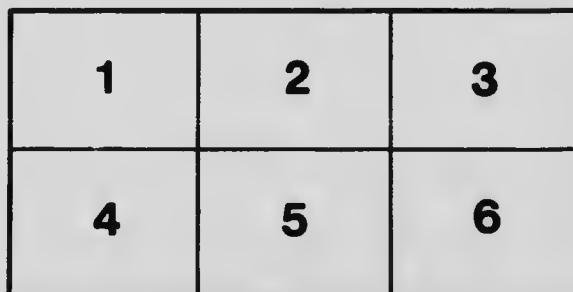
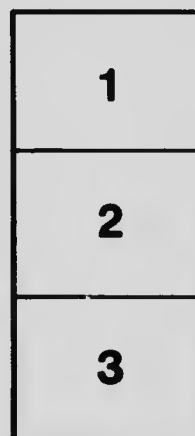
National Library of Canada

The images appearing here are the best quality possible considering the condition and legibility of the original copy and in keeping with the filming contract specifications.

Original copies in printed paper covers are filmed beginning with the front cover and ending on the last page with a printed or illustrated impression, or the back cover when appropriate. All other original copies are filmed beginning on the first page with a printed or illustrated impression, and ending on the last page with a printed or illustrated impression.

The last recorded frame on each microfiche shall contain the symbol \rightarrow (meaning "CONTINUED"), or the symbol ∇ (meaning "END"), whichever applies.

Maps, plates, charts, etc., may be filmed at different reduction ratios. Those too large to be entirely included in one exposure are filmed beginning in the upper left hand corner, left to right and top to bottom, as many frames as required. The following diagrams illustrate the method:



L'exemplaire filmé fut reproduit grâce à la générosité de:

Bibliothèque nationale du Canada

Les images suivantes ont été reproduites avec le plus grand soin, compte tenu de la condition et de la netteté de l'exemplaire filmé, et en conformité avec les conditions du contrat de filmage.

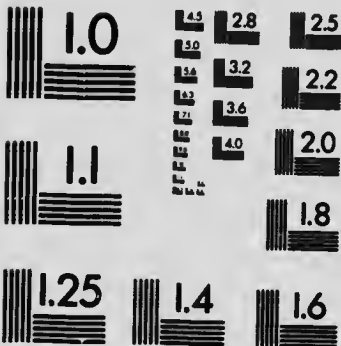
Les exemplaires originaux dont la couverture en papier est imprimée sont filmés en commençant par le premier plat et en terminant soit par la dernière page qui comporte une empreinte d'impression ou d'illustration, soit par le second plat, selon le cas. Tous les autres exemplaires originaux sont filmés en commençant par la première page qui comporte une empreinte d'impression ou d'illustration et en terminant par la dernière page qui comporte une telle empreinte.

Un des symboles suivants apparaîtra sur la dernière image de chaque microfiche, selon le cas: le symbole \rightarrow signifie "A SUIVRE", le symbole ∇ signifie "FIN".

Les cartes, planches, tableaux, etc., peuvent être filmés à des taux de réduction différents. Lorsque le document est trop grand pour être reproduit en un seul cliché, il est filmé à partir de l'angle supérieur gauche, de gauche à droite, et de haut en bas, en prenant le nombre d'images nécessaire. Les diagrammes suivants illustrent la méthode.

MICROCOPY RESOLUTION TEST CHART

(ANSI and ISO TEST CHART No. 2)



APPLIED IMAGE Inc

1653 East Main Street
Rochester, New York 14609 USA
(716) 482 - 0300 - Phone
(716) 288 - 5989 - Fax



MOUNT ROYAL FROM THE SOUTH.

1413

Idylls of Our Island

BY

MYRTLE J. BOA



PRICE \$1.00

NET PROCEEDS DONATED TO
The Canadian Red Cross Society
Quebec Provincial Branch,
MONTREAL

FC 2947.37

B63

19002

*COPYRIGHT
APPLIED FOR*

PREFACE



THE few views and descriptions presented in the following pages do not by any means attempt to cover the many beautiful buildings and charming scenery which our City and Island afford.

Especially interesting is the trip down the foaming Rapids at LaChine. Passing the Indian village of Caughnawaga with its quaint houses, and the Canadian Pacific Railway bridge, the trusty steamer guides us through the dangerous, white-capped reach of Rapids, and rippling waters of the broad St. Lawrence until we come in sight of the city. Toward twilight of a cloudy day Montreal, with its towers and lofty spires, and the long stretch of mountain veiled in pale grey mist, appears like a phantom city beyond the dark silhouette of Nun's Islands' wooded strip.

The bird's-eye view of Montreal from the look-out on Mount Royal is very beautiful. The city stretches below with its spires and domes gilded in the sun, and

beyond its bounds the broad belt of the St. Lawrence shows silvery blue, spanned by Victoria Jubilee Bridge, with St. Helen's Isle showing softly green in its midst like an emerald gem, and in the distance the shadowy heights of Mount Bruno, Beloeil and Rougemont may be seen, and further back the top of Mount Johnson, sometimes called the Sugar Loaf on account of its peculiar shape.

Very cool and delightful are the wide and spacious parks, chief among which are Mount Royal Park, Parc Lafontaine and St. Helen's Island, the latter named for Helene de Bonilli, the wife of Champlain; and the many statues and monuments on the carefully tended squares commemorate different historical events.

The various types of architecture expressed in the many churches are very beautiful, for which Montreal has been truly called "The City of Churches."

M. J. B.

MONTREAL.

CONTENTS



1. MOUNT ROYAL.
2. MCGILL UNIVERSITY.
3. CHRIST CHURCH CATHEDRAL.
4. CHATEAU DE RAMEZAY.
5. WESTMOUNT FETE.
6. NOTRE DAME CHURCH.
7. THE ART GALLERY.
8. WESTMOUNT PARK.
9. ST. JAMES CATHEDRAL.
10. ROYAL VICTORIA HOSPITAL.
11. FRASER LIBRARY.
12. RAPIDS AT BORDEAUX.



Mount Royal

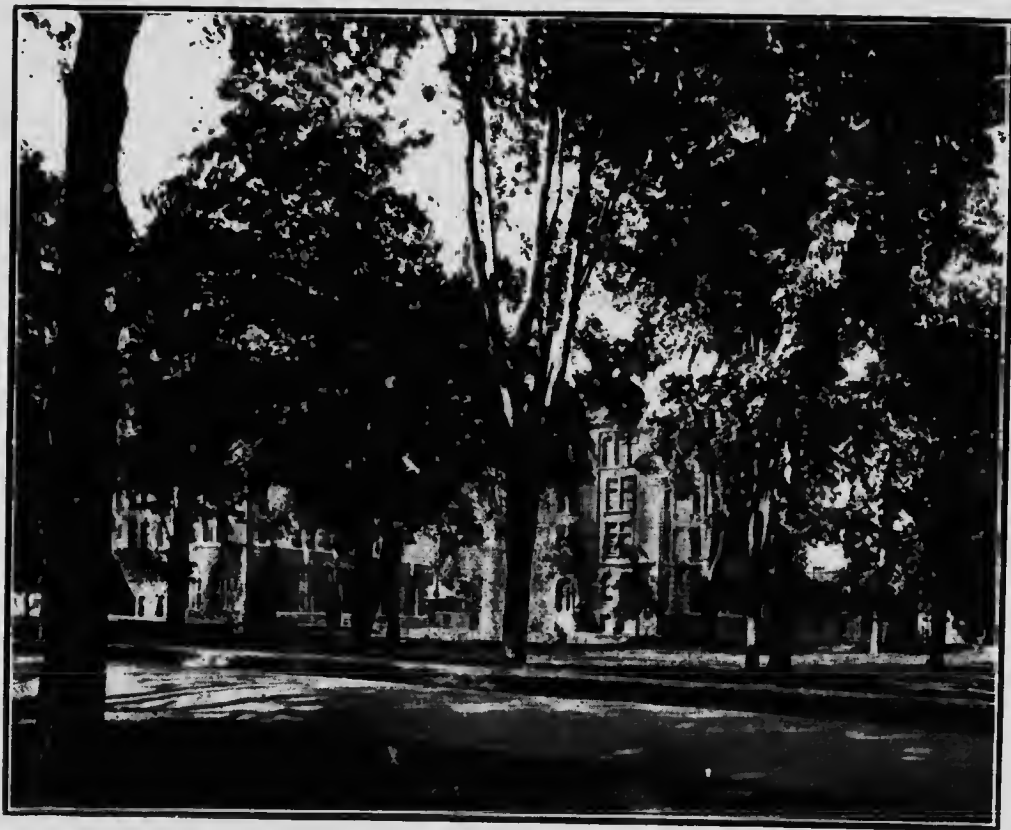
MOUNT ROYAL, rises in still majesty
Above our island.

On her heights
The clustered trees show light and shade
Of greenness, when the Sun
From the deep azure canopy smiles down
On the sweet scene his radiance creates.

Beneath, where dwellings stand in stately rows,
The trees look up and on their quivering tips
Catch silver largess from the bounteous Sun.

And where our highland forms against the sky
Uneven line, a misty purity,
Like the sheer stuff of which bride's veils are made,
Softens the contrast 'twixt the green and blue.

We love our mountain, we who dwell
Beneath her shelter, beautiful she stands,
Like some fair guardian of our City dear.



McGill University

BEYOND the buildings, marble white
 Beneath the golden glory of the sun,
About whose base the exquisite ivy clings,
The mountain steep uplifts her stately height
Pine-fringed against the sky.

 Before,

The velvet hollows, and the campus broad,
Studded with lofty trees whose spreading boughs
With interlacing foliage o'erarch
And shade the winding walks.

Upon the campus in majestic strength
The old elm stands, the rugged founder tree.

Brown mossy fruited butternuts
And stalwart oaks with the old elm survive
The early days ere the first building rose
A rich memorial of James McGill.

And in these halls the intellect is trained
To use its native richness, blossoming
In lives of honor and of usefulness.



Christ Church Cathedral

TO the soft beauty of the arching sky
Where filmy clouds float in the sunlight deeps
The great grey Gothic edifice uplifts
Its lofty spire.

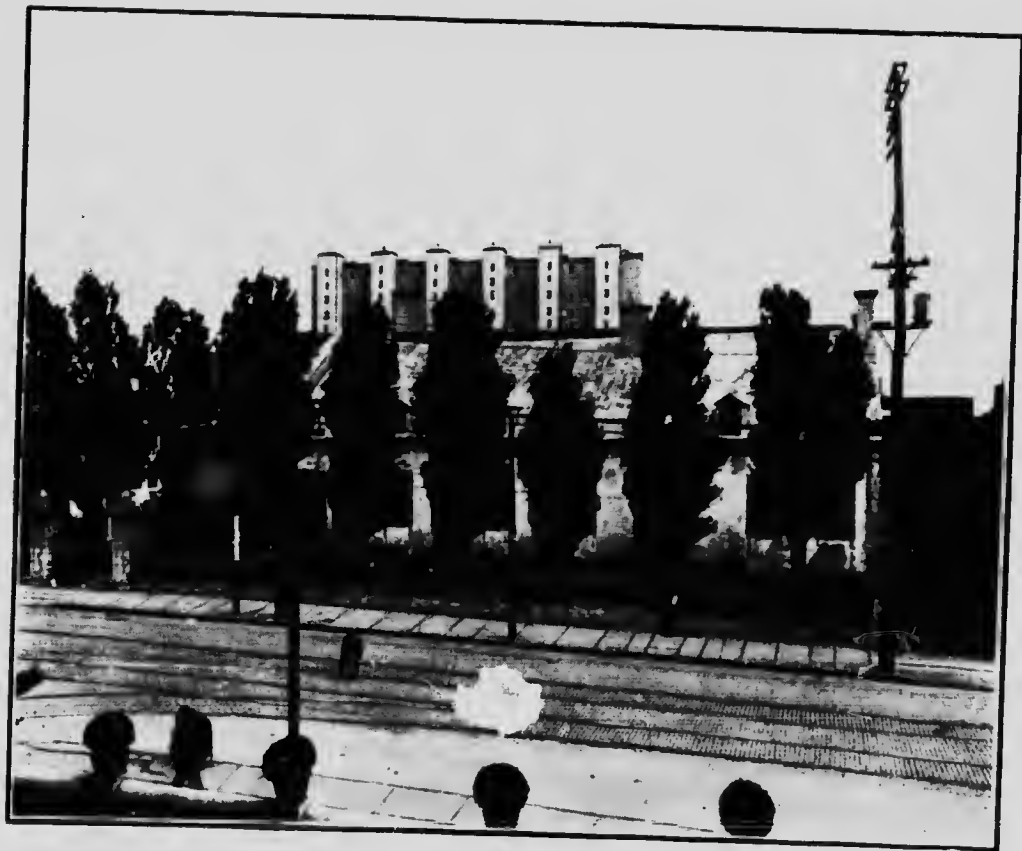
Below,

The rich rose window circles, and beneath
Its carven beauty triple-canopied
The portal leads unto the pillared aisle,
Whose every arch in matchless symmetry
Curves like a leaf-top, and the sun's soft gold
Sifts thro' the rich stained casements in a glow
Of mellow light.

As though

Newly alighted from the courts above
Like Irises, sweet messengers of heaven,
The winged angels with their spotless scrolls
From inner walls incline.

And in a swell of richest harmony
The sweet-voiced organ breathes a hymn of praise
Unto our heavenly King.



Chateau de Ramezay

SERENE amid the City's din
The ancient Chateau stands.

Tall poplar trees
From Lombardy o'ershade the velvet lawn,
And tiny floral blooms of purple shade
Lift their shy faces from the circled plot.

Within,
The deep-arched doorway opens from the hall
Into the Elgin Gallery, where hang
Portraits of heroes and of noble men.

The Montreal and the de Vaudrieul Rooms,
The Council Chamber and the French Salon
And the quaint kitchen hold the souvenirs
The passing years deposit in their wake:
While a railed stairway leads up to the eoo
And silent vaults below.

What a strange silence broods about these halls,
As though the veiled spirit of the past
Still lingered like the echo of a dream.

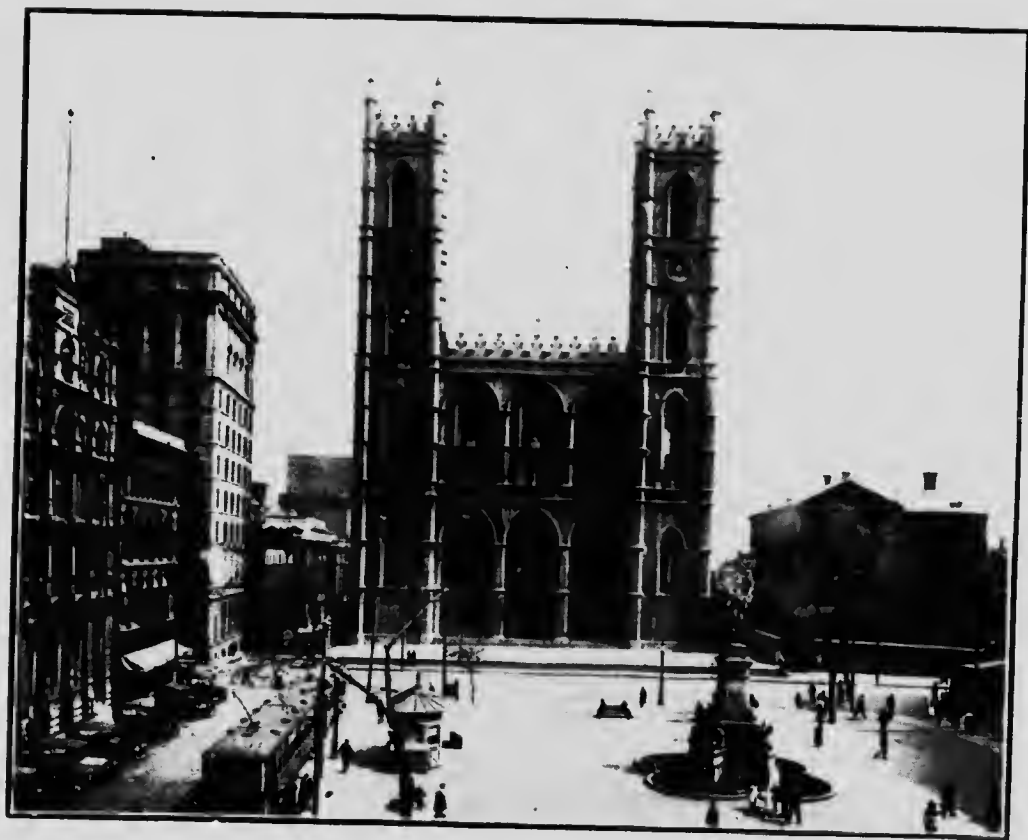


The Westmount Fete

THE dim hushed evening draws her dusky veil
Across the silent sky.

About

The velvet smoothness of the shadowy park
Where the soft fragrance laden zephyrs sway
The foliage of richly leaved trees
The pointed tents are staked, and thro' the flaps
Half-opened may be glimpsed
The rainbow hues of divers merchandise,
A thousand lanterns lend their magic light
Changing the staid park into fairyland,
And where the fountain sprays in silvery shower
The Liliputian lake is shot across
Its quivering surface where the shadows glance
With spiral jets of red and yellow flame
Reflected from the colored globes above,
And where the hollow dips a narrow stream
Spanned by the rustic bridge's curving arch
Mirrors the leafy overhanging boughs
Within its shallow depth.
The stirring strains of martial music break
Upon the night, keeping the thoughts of all
Amid the merry-making throng in touch
With the true purpose of their gathering.



Notre Dame Church

ABOVE the Church of Notre Dame
Deep-throated bells in the twin towers
Of Temperance and Perseverance hang,
Ready to sound their solemn call to prayer
Over the City.

Within.

In shadowy pew amid the solemn hush
The fretted people kneel,
And from each niche and by the winding stair
Saints with their pure and holy faces bend
In tender pity o'er the worshippers,
As though from their high heights they understood
The thorn-strewn path we mortals tread below.

Above.

The vaulted spaces blue as evening skies
Are strewn with silver stars and fleur-de-lis,
And the warm sun, sweet smiling thro' the grey
Rich-patterned casements, sheds a quiet glow
Like a soft benediction o'er the scene.

Beyond.

With paintings rare and beautiful
As some fair dream, exquisitely designed,
Lies the hushed Chapel of the Sacred Heart.

How like a lovely symbol of the soul
This rich-interiored temple seems to be,
As though Man sought in carved wood and stone
An outer semblance of his inner thoughts
Of holiness and praise.



The Art Gallery

LIKE some chaste pile of Grecian marble stands
The Gallery, where meet to charm the eye
The lovely semblances of the rich thoughts
The Muses gift to Man.

Wide steps of stone
Lead to the entrance where in beauty rise
Ionic columns, and on either side
O'er the plain casements classic myths portray
In carven purity the outward form
Of virtues by Hellenic minds conceived.

And on each side
Of the broad stairway rising from the hall
Rich crimson curtains hang, beyond whose folds
Among the palms the sculptured statues stand
In beautiful repose.

The stairway leads
To upper galleries where paintings rare
By Master minds conceived hang on the walls,
Gems of surpassing loveliness and grace.



Westmount Park

[N one of Westmount's quiet parks
Red flowers sway with the soft-breathing breeze
Crimson flame of beauty.

And the sun
A molten ball of gold cuts through
The coolness of the turquoise sky
Which richly flecked with ermine hangs o'erhead.

Green in the background lies the close-clipt lawn
And richly leaved trees that gently stir
In the cool breeze.

Red flowers! Your beauty flames upon the sense,
And cool aristocratic turquoise sky,
You calm the mood to a more thoughtful bent.

A lovely scene, a very morning prayer,
A psalm of praise, that all too soon recedes
On the rapt gaze for scenes of duller hue.



St. James Cathedral

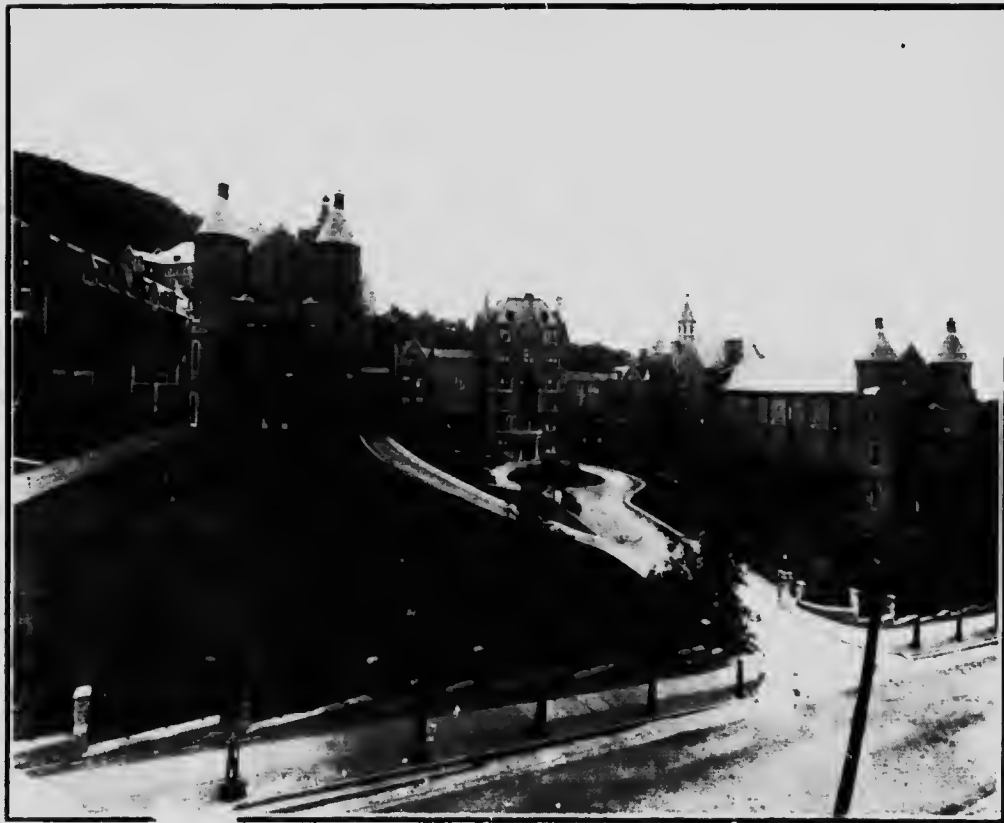
ABOVE the pillared edifice of stone
The twelve apostles stand, their noble forms
Clearly defined against th' ethereal blue
And crimine triumph'd sky.

The entrances like gateways into peace
Lead to the dim aisle and the altars lit
With the pale light as of departed souls
Returned to illumine faltering steps to heaven.

The shadowed paintings of a by-gone day
Hang on the walls, recalling early times
Ere the Red man had made his exodus
And the white man assumed the reins of power.

In the vast space of richly carv'd vaults
The half-hushed sound of foot-falls echo soft
Upon the list'ning ear.

But deeper still, a sense of reverence
Falls on the soul, as though the atmosphere
Was filled with prayer, loosed from the heart
Of many a worshipper.



Royal Victoria Hospital

UPON Mount Royal's southern slope
Where breezes sweep among the pines
The hospital like some Scotch castle stands
Upon its highland base.

O'er the main entrance to the central block
Appear the monograms engraved in stone
Of Lord Mount Stephen and Sir Donald Smith.*

The Gaelic motto "Lippen" to attend,
And "Perseverance" on the coats-of-arms
On the twin gables form the watchwords twain
That influence the healers of the sick.

And where the smooth
Green terraces incline the driveway forms
A mighty horse-shoe in its curving track.

A marble statue of Victoria
Immortal in her people's memory,
Graces the quiet hall and seems to shed
The sweetness of her gentle life about
The sun-lit wards and stately corridors,
Where white-capped nurses bend above the cots
In ministrations to each sufferer.

* Lord Strathcona



The Fraser Library

THE building standing in its quiet strength
Suggests the simple binding of a book,
(Thus fancy speaks) whose rich interior
Holds magic keys that open doors to thought.

The varied volumes on the well-filled shelves
Unlock new vistas of the mental world.
The thoughts of men enregistered upon
The printed page throughout the ages stir
To sudden music silent chords that sleep
Within the soul, and the bright glow
Of spirit radiance that in us dwells
Illuminates each thought and gives to dreams
And deeds heroic of the past new life.

And statues grace the hushed and quiet rooms,
Of men whose useful lives long since were spent,
Bearing undying in their moulded forms
The noble traces of the spirit's fire.

The Rapids at Bordeaux

SMOOTHLY the Prairie River flows
Between high banks with vernal foliage fringed,
Gliding sun-glinted on its onward way,
Till where the rapids reached its currents break
In foaming waves upon the jagged rocks.

Down these wild waters in a bark canoe
By Indians manned three centuries ago
Came Father Viel, the priest of Recollect,
Ahuntsic too, his red-skinned neophyte,
And met their death among the angry waves,
By Indian guides their confidence betrayed.

The pier long-jutting parts the turbid sault
From the calm waters of the tranquil bay.
That mirrors in its depths the azure skies
And filmy clouds o'erhead, and by the brink
Where silvery gleams glance on the emerald leaf
The stooping trees can see themselves below.

Below,

Smoothly the Prairie River flows,
Between high banks with vernal foliage fringed,
Lapping upon the quiet shores with soft,
Insistent sound.



