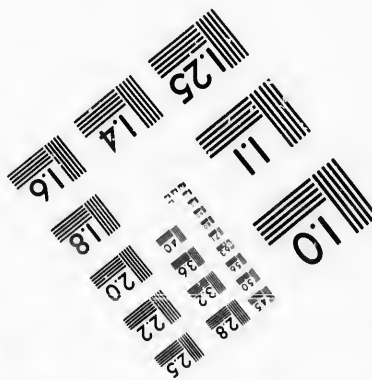
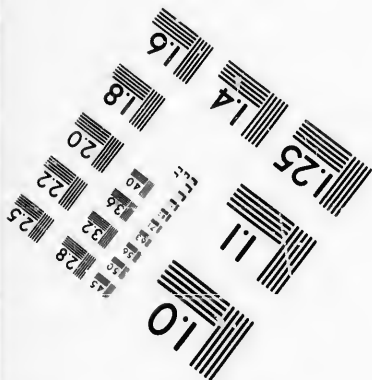
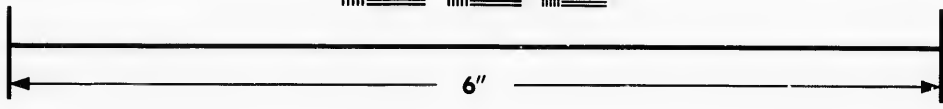
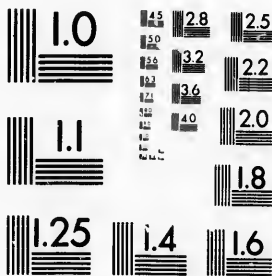


**IMAGE EVALUATION
TEST TARGET (MT-3)**



**Photographic
Sciences
Corporation**

23 WEST MAIN STREET
WEBSTER, N. Y. 14580
(716) 872-4503

15 28
16 32 25
18 36 22
20

**CIHM/ICMH
Microfiche
Series.**

**CIHM/ICMH
Collection de
microfiches.**



Canadian Institute for Historical Microreproductions / Institut canadien de microreproductions historiques

10
11

© 1987

Technical and Bibliographic Notes/Notes techniques et bibliographiques

The Institute has attempted to obtain the best original copy available for filming. Features of this copy which may be bibliographically unique, which may alter any of the images in the reproduction, or which may significantly change the usual method of filming, are checked below.

L'Institut a microfilmé le meilleur exemplaire qu'il lui a été possible de se procurer. Les détails de cet exemplaire qui sont peut-être uniques du point de vue bibliographique, qui peuvent modifier une image reproduite, ou qui peuvent exiger une modification dans la méthode normale de filmage sont indiqués ci-dessous.

- Coloured covers/
Couverture de couleur
- Covers damaged/
Couverture endommagée
- Covers restored and/or laminated/
Couverture restaurée et/ou pelliculée
- Cover title missing/
Le titre de couverture manque
- Coloured maps/
Cartes géographiques en couleur
- Coloured ink (i.e. other than blue or black)/
Encre de couleur (i.e. autre que bleue ou noire)
- Coloured plates and/or illustrations/
Planches et/ou illustrations en couleur
- Bound with other material/
Relié avec d'autres documents
- Tight binding may cause shadows or distortion
along interior margin/
La reliure serrée peut causer de l'ombre ou de la
distorsion le long de la marge intérieure
- Blank leaves added during restoration may
appear within the text. Whenever possible, these
have been omitted from filming/
Il se peut que certaines pages blanches ajoutées
lors d'une restauration apparaissent dans le texte,
mais, lorsque cela était possible, ces pages n'ont
pas été filmées.
- Additional comments:/
Commentaires supplémentaires:

- Coloured pages/
Pages de couleur
- Pages damaged/
Pages endommagées
- Pages restored and/or laminated/
Pages restaurées et/ou pelliculées
- Pages discoloured, stained or foxed/
Pages décolorés, tachetés ou piquetés
- Pages detached/
Pages détachées
- Showthrough/
Transparence
- Quality of print varies/
Qualité inégale de l'impression
- Includes supplementary material/
Comprend du matériel supplémentaire
- Only edition available/
Seule édition disponible
- Pages wholly or partially obscured by errata
slips, tissues, etc., have been refilmed to
ensure the best possible image/
Les pages totalement ou partiellement
obscurcies par un feuillet d'errata, une pelure,
etc., ont été filmées à nouveau de façon à
obtenir la meilleure image possible.

This item is filmed at the reduction ratio checked below/
Ce document est filmé au taux de réduction indiqué ci-dessous.

10X	14X	18X	22X	26X	30X
<input type="checkbox"/>	<input type="checkbox"/>	<input checked="" type="checkbox"/>	<input type="checkbox"/>	<input type="checkbox"/>	<input type="checkbox"/>
12X	16X	20X	24X	28X	32X

The copy filmed here has been reproduced thanks to the generosity of:

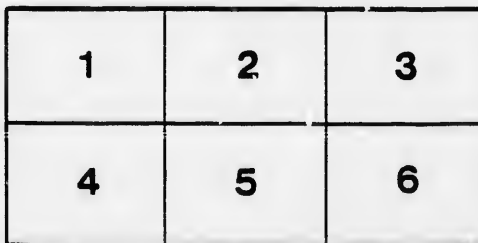
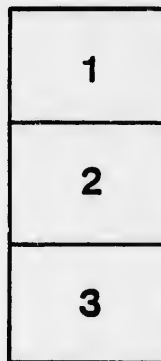
D. B. Weldon Library
University of Western Ontario
(Regional History Room)

The images appearing here are the best quality possible considering the condition and legibility of the original copy and in keeping with the filming contract specifications.

Original copies in printed paper covers are filmed beginning with the front cover and ending on the last page with a printed or illustrated impression, or the back cover when appropriate. All other original copies are filmed beginning on the first page with a printed or illustrated impression, and ending on the last page with a printed or illustrated impression.

The last recorded frame on each microfiche shall contain the symbol \rightarrow (meaning "CONTINUED"), or the symbol ∇ (meaning "END"), whichever applies.

Maps, plates, charts, etc., may be filmed at different reduction ratios. Those too large to be entirely included in one exposure are filmed beginning in the upper left hand corner, left to right and top to bottom, as many frames as required. The following diagrams illustrate the method:



L'exemplaire filmé fut reproduit grâce à la générosité de:

D. B. Weldon Library
University of Western Ontario
(Regional History Room)

Les images suivantes ont été reproduites avec le plus grand soin, compte tenu de la condition et de la netteté de l'exemplaire filmé, et en conformité avec les conditions du contrat de filmage.

Les exemplaires originaux dont la couverture en papier est imprimée sont filmés en commençant par le premier plat et en terminant soit par la dernière page qui comporte une empreinte d'impression ou d'illustration, soit par le second plat, selon le cas. Tous les autres exemplaires originaux sont filmés en commençant par la première page qui comporte une empreinte d'impression ou d'illustration et en terminant par la dernière page qui comporte une telle empreinte.

Un des symboles suivants apparaîtra sur la dernière image de chaque microfiche, selon le cas: le symbole \rightarrow signifie "A SUIVRE", le symbole ∇ signifie "FIN".

Les cartes, planches, tableaux, etc., peuvent être filmés à des taux de réduction différents. Lorsque le document est trop grand pour être reproduit en un seul cliché, il est filmé à partir de l'angle supérieur gauche, de gauche à droite, et de haut en bas, en prenant le nombre d'images nécessaire. Les diagrammes suivants illustrent la méthode.



Operetta,

JOHN GILPIN TO DATE

—and—

Farce,

ICI ON PARLE FRANCAIS
(French Spoken Here)



Under Auspices Y. M. R. & R. R.

Preston Opera House

MAY 7th



MISS DORA GMELIN,

Accompanist

MR. H. L. READ,

Director



DON'T BUY YOUR SUMMER
DRESSES UNTIL YOU
SEE THE
LARGE ASSORTMENT OF
FINE DRESS GOODS
AND SILKS AT
SCHLUETER'S THE BUSINESS
CORNER. LARGE
SHOWING
OF PRINTS, GINGHAMS,
DIMITY, ORGANDIE
AND
MUSLIN. EVERYBODY WEL-
COME TO INSPECT.

P

Pres

If

W

—Preston— Produce - Store

—CALIFORNIA BLOCK—

Choice Butter, fresh Eggs, Apples, Potatoes and all kinds of Farm Produce, also a full line of Staple Groceries and the best Cured Meats and Sausages in town. After May 11th in Opera Block.

E. B. REIST,

'PHONE 40

Preston,

:-:

Ontario

If in Need of Glasses go to a
Practical Optician.

LORNE BRICKER.

Watchmaker, Jeweler and Optician

Opera House Block, Preston.

For Choice

Laces, Embroideries,
Trimmings & Novelties
in Ladies' Wear, go to

MISS COWAN,

King Street

Preston

—FOR YOUR—

**Furniture,
Picture Fram-
ing, Upholster-
ing & Repairing**

We can give you
satisfaction in goods
and workmanship.
High class goods and
work at the lowest
prices.

M. J. PAUTLER,

King Street

Preston

—Judges of a high-class 5c Cigar take a—

**“Crown Prince,” “Infant” or
“Whitehead.”**

—WARRANTED FIRST CLASS—

For a fine 10c Cigar try a **“La-Beneta”**

—MANUFACTURED BY—

CENTRAL CIGAR CO.,

Preston,

Ontario

—SEE—

H. J. Schultz's

Latest New York Spring Styles,
Hats & Ties, fine CLOTHING a
Specialty. California Block, Preston.

JOHN GILPIN TO DATE

—CHARACTERS—

Mrs. Gilpin. Miss Laura Clare
Betty' her daughter. Miss Alma Fox
John Gilpin, Mrs. Gilpin's husband. . . Mr. H. L. Clare
Mr. Calender, Gilpin's friend. A. Fisher
Tom, Calender's son. Mr. Geo. Darnley
Alphonse. . } Tramps. { H. C. Edgar
Gaston . . . } { A. Schlueter

AND A CHORUS OF 30

SCENE 1—In front of John Gilpin's house.

SCENE 2—In front of Mr. Calender's house.

SKIPTON'S

For new Wall Paper
and choice Stationery

Buggies, Carriages and Roadcarts

We make a speciality of the latest styles of Vehicles, with the hard rubber and pneumatic tires.

H. C. HAMACHER, KING STREET,
PRESTON.

Repairing done as usual.

CHORUS FOR OPERETTA

Miss L. Andrich,	Miss A. Weiler.
" R. Bernhardt,	" E. Werlich,
" A. G. Blackstock,	" D. Winter,
" A. Bowman,	" C. Wurster,
" M. Cornell,	Mr. A. R. Bernhardt,
" M. Herman,	" E. Bowman,
" M. Mickler,	" W. Biggs,
" G. Mulloy,	" F. Buerke,
" J. Mulloy,	" C. Linton,
" V. Schlueter,	" S. Shantz,
" E. Stahlschmidt,	" S. Smith,
" G. Stahlschmidt,	" N. Schoenau,
" A. Stahlschmidt,	" H. L. Underwood.
" I. Theurer,	

-CENTRAL-

COAL AND WOOD YARD

Kept always on hand, a
large supply of Coal & Wood

FRANK FRANK

-PHONE 36-

King St, :.: Preston.

Choice Groceries

Confectioners and
Fruits in Season.

—AT—

D. KRAFT'S,

KING STREET,

PRESTON

For a Fine Suit

Correct in Cloth, cut, trimmings
and finish—We can assure you
satisfaction

—OOOO—

J. A. SCOTT,

—Fine Tailoring—

Preston

and

Guolph

El Royalo is the leading
Ioc Cigar.

Try "MY PARTNER"
and "PRINCE" for 5 cts.

Manufactured by

C. MERKEL,

Preston

Ontario

Furniture

and Carpets

MUSIC HATH

CHARMS

And so have the
EASY CHAIRS you
buy at the leading Fur-
niture Store.

HALL & BELT,

King Street — Preston

Mrs
Mis
Mrs
Ann
May
Vic
Mr.

The right place to buy FISH-
ING TACKLE, REFRIGERA-
TORS, OIL STOVES and
HAMMOCKS is at Preston's
Hardware Store. A call solicited.

W. F. MICKUS,

King Street

:::

Preston

ICI ON PARLE FRANCAIS

(French Spoken Here)

—CHARACTERS—

Mrs. Spriggins.....Miss Gladys Mulloy
Miss Angelina Spriggins.....Miss Elma Werlich
Mrs. Regulus Rattan.....Miss Della Winter
Anna Maria.....Miss Maggie Kirkwood
Major Regulus Rattan.....Mr. H. C. Edgar
Victor Dubois.....Mr. Geo. Darnley
Mr. Spriggins.....Mr. H. L. Read

SCENE—Living Room in Spriggin's House.

PLACE—Bathing Resort in England.

Preston Conservatory

Fresh Vegetables and Cut Flowers al-
ways on hand. Designs and general
floral work neatly done on short notice.
Goods delivered.

G. L. PELZ,

Opposite Power House

:::

Preston

For Satisfaction

In a nice Suit and in Men's
Furnishing of the correct style

— TRY —

HARRY BECK,

King Street

:-:

Preston

Hurry to MÆCKER'S
COST PRICE SALE
of BOOTS & SHOES.
Stock must go down
before removing to new
premises.

— FOR THE —
FINEST FANCY CHINA

Werster leads in quality,
variety and price. See
my assortment, it is grand

F. G. Wurster,

King Street,

:-:

Preston



Just a 
 Word

To those about to build. We are in a position to show you ARCHITECTURAL SHEET METAL GOODS of all kinds, including METAL SHINGLES, METAL SIDINGS & METAL CEILINGS.

Our recent additions to our factory premises include a large sample room; where we are displaying these goods.

You are cordially invited to call and examine our lines and receive estimates covering your requirements.



THE
Metal Shingle & Siding Co.,
Limited

A GOOD PICTURE

Is a delight to any person. For the Highest
Class PHOTO WORK you have to visit the
Atelier of Canada's LEADING ARTIST.

ESSON,

PRESTON, ONTARIO.

B. W. ZIEMANN,

Merchant Tailor & Men's Furnishings



Don't forget the fact that our
stock comprises everything that
Men wear but Boots. We
want you to come and see us.

Coal and Wood

Give us a trial for your
SUMMER FUEL. Orders
for Coal taken from month
to month.

M. WINTERHALT,

Opposite G. T. R. Station, Preston.

