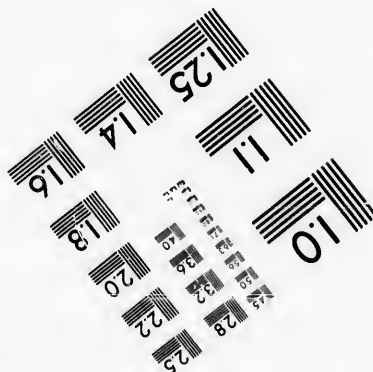
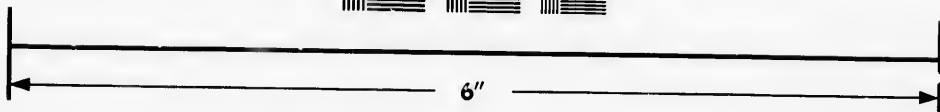
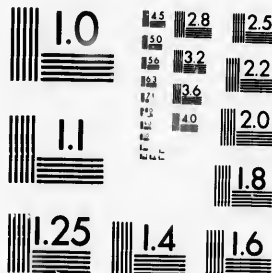
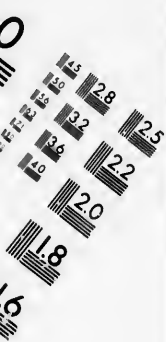


**IMAGE EVALUATION
TEST TARGET (MT-3)**



**Photographic
Sciences
Corporation**

23 WEST MAIN STREET
WEBSTER, N.Y. 14580
(716) 872-4503



**CIHM/ICMH
Microfiche
Series.**

**CIHM/ICMH
Collection de
microfiches.**



Canadian Institute for Historical Microreproductions / Institut canadien de microreproductions historiques



© 1986

Technical and Bibliographic Notes/Notes techniques et bibliographiques

The Institute has attempted to obtain the best original copy available for filming. Features of this copy which may be bibliographically unique, which may alter any of the images in the reproduction, or which may significantly change the usual method of filming, are checked below.

L'Institut a microfilmé le meilleur exemplaire qu'il lui a été possible de se procurer. Les détails de cet exemplaire qui sont peut-être uniques du point de vue bibliographique, qui peuvent modifier une image reproduite, ou qui peuvent exiger une modification dans la méthode normale de filmage sont indiqués ci-dessous.

- | | |
|--|--|
| <input type="checkbox"/> Coloured covers/
Couverture de couleur | <input type="checkbox"/> Coloured pages/
Pages de couleur |
| <input type="checkbox"/> Covers damaged/
Couverture endommagée | <input type="checkbox"/> Pages damaged/
Pages endommagées |
| <input type="checkbox"/> Covers restored and/or laminated/
Couverture restaurée et/ou pelliculée | <input type="checkbox"/> Pages restored and/or laminated/
Pages restaurées et/ou pelliculées |
| <input type="checkbox"/> Cover title missing/
Le titre de couverture manque | <input checked="" type="checkbox"/> Pages discoloured, stained or foxed/
Pages décolorées, tachetées ou piquées |
| <input type="checkbox"/> Coloured maps/
Cartes géographiques en couleur | <input type="checkbox"/> Pages detached/
Pages détachées |
| <input type="checkbox"/> Coloured ink (i.e. other than blue or black)/
Encre de couleur (i.e. autre que bleu ou noire) | <input checked="" type="checkbox"/> Showthrough/
Transparence |
| <input type="checkbox"/> Coloured plates and/or illustrations/
Planches et/ou illustrations en couleur | <input type="checkbox"/> Quality of print varies/
Qualité inégale de l'impression |
| <input type="checkbox"/> Bound with other material/
Relié avec d'autres documents | <input type="checkbox"/> Includes supplementary material/
Comprend du matériel supplémentaire |
| <input type="checkbox"/> Tight binding may cause shadows or distortion
along interior margin/
Lare liure serrée peut causer de l'ombre ou de la
distorsion le long de la marge intérieure | <input type="checkbox"/> Only edition available/
Seule édition disponible |
| <input type="checkbox"/> Blank leaves added during restoration may
appear within the text. Whenever possible, these
have been omitted from filming/
Il se peut que certaines pages blanches ajoutées
lors d'une restauration apparaissent dans le texte,
mais, lorsque cela était possible, ces pages n'ont
pas été filmées. | <input type="checkbox"/> Pages wholly or partially obscured by errata
slips, tissues, etc., have been refilmed to
ensure the best possible image/
Les pages totalement ou partiellement
obscurcies par un feuillet d'errata, une pelure,
etc., ont été filmées à nouveau de façon à
obtenir la meilleure image possible. |
| <input type="checkbox"/> Additional comments:/
Commentaires supplémentaires: | |

This item is filmed at the reduction ratio checked below/
Ce document est filmé au taux de réduction indiqué ci-dessous.

10X	14X	18X	22X	26X	30X
<input type="checkbox"/>	<input type="checkbox"/>	<input type="checkbox"/>	<input type="checkbox"/>	<input checked="" type="checkbox"/>	<input type="checkbox"/>
12X	16X	20X	24X	28X	32X

The copy filmed here has been reproduced thanks to the generosity of:

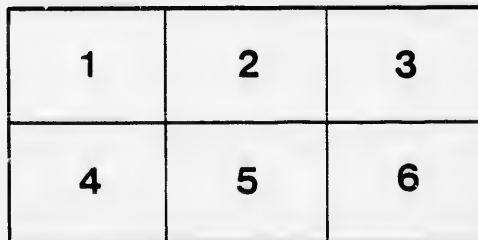
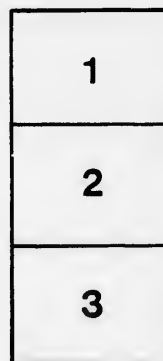
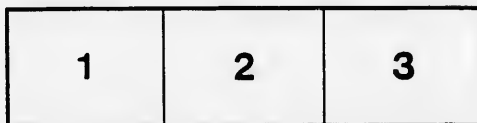
D. B. Weldon Library
University of Western Ontario
(Regional History Room)

The images appearing here are the best quality possible considering the condition and legibility of the original copy and in keeping with the filming contract specifications.

Original copies in printed paper covers are filmed beginning with the front cover and ending on the last page with a printed or illustrated impression, or the back cover when appropriate. All other original copies are filmed beginning on the first page with a printed or illustrated impression, and ending on the last page with a printed or illustrated impression.

The last recorded frame on each microfiche shall contain the symbol \rightarrow (meaning "CONTINUED"), or the symbol ∇ (meaning "END"), whichever applies.

Maps, plates, charts, etc., may be filmed at different reduction ratios. Those too large to be entirely included in one exposure are filmed beginning in the upper left hand corner, left to right and top to bottom, as many frames as required. The following diagrams illustrate the method:



L'exempleire filmé fut reproduit grâce à la générosité de:

D. B. Weldon Library
University of Western Ontario
(Regional History Room)

Les images suivantes ont été reproduites avec le plus grand soin, compte tenu de la condition et de la netteté de l'exempleire filmé, et en conformité avec les conditions du contrat de filmage.

Les exempleires origineux dont la couverture en papier est imprimée sont filmés en commençant par le premier plat et en terminant soit par la dernière page qui comporte une empreinte d'impression ou d'illustration, soit par le second plat, selon le cas. Tous les autres exempleires origineux sont filmés en commençant par la première page qui comporte une empreinte d'impression ou d'illustration et en terminant par la dernière page qui comporte une telle empreinte.

Un des symboles suivants apparaîtra sur la dernière image de chaque microfiche, selon le cas: le symbole \rightarrow signifie "A SUIVRE", le symbole ∇ signifie "FIN".

Les cartes, planches, tableaux, etc., peuvent être filmés à des taux de réduction différents. Lorsque le document est trop grand pour être reproduit en un seul cliché, il est filmé à partir de l'angle supérieur gauche, de gauche à droite, et de haut en bas, en prenant le nombre d'images nécessaire. Les diagrammes suivants illustrent la méthode.

errata
to

pelure,
n à



32X

MICHIGAN, OHIO
 CANADIAN CIRCUIT
 EIGHTEEN
 THEATRES

CLEVELAND, CINCINNATI, BUFFALO,
 DETROIT, TORONTO,
 TOLEDO, LONDON, HAMILTON,
 WOODSTOCK, SAGINAW,
 GRAND RAPIDS, BAY CITY AND
 JACKSON.



Grand
OPERATION HOUSE
London.

C. J. WHITNEY. A. E. ROOTE. ONTARIO.
 LESSEE. MANAGER



W. SMITH.

E. HOLLAND.

W. S. PARTRIDGE.

SMITH & BROS.

THE
 LEADING
 SANITARY
 PLUMBERS
 AND
 HEATING
 ENGINEERS
 OF
 WESTERN
 ONTARIO.

376
 RICHMOND STREET, LONDON.

OPPOSITE GRAND OPERA HOUSE BUILDING.

A full stock of Supplies always on hand.

TELEPHONE 538.

LADIES! THE ONLY WAY TO GET HELP IS THROUGH THE "FREE PRESS" WANT COLUMN.



Parisian
Steam
Laundry

73 & 75 DUNDAS STREET.

BRANCH OFFICES:

226 Dundas St. 752 Waterloo 410 Hamilton Rd.
280 " " 572 Fall Mill. 241 Wellington.
310 " " 389 Richmond. 338 Ridout.
322 " " 485 " "

J. K. SPRY, Manager.

HUESTON'S

LIVERY,
Coupe & Cab Stables
WELLINGTON STREET.

Finest Horses and Carriages in the City.
OPEN DAY AND NIGHT. TELEPHONE 441.

ROBT. HUESTON,
Proprietor.

H. McKENNA,

-FOR-

Choice Cigars, Tobaccos

AND PIPES.

ALWAYS OPEN
..... AFTER THE OPERA.

225 DUNDAS STREET.

SPRING



1894.

WE have just received the finest assortment of Spring Hats ever shown in the city. We are leaders for correct shapes, try us. A pleasure to show goods.

Rivard

LONDON'S FASHIONABLE HATTER AND FURRIER
400 RICHMOND STREET.

WILLIAMS' Pianos CANADA'S FAVORITE

Cannot be excelled for touch, singing quality, delicacy and great power of tone, with highest excellence of workmanship.

ALL THE LATEST VOCAL AND INSTRUMENTAL MUSIC RECEIVED AS PUBLISHED.

Musical Instruments of all kinds, Strings and Fittings AT LOWEST PRICES.

R. S. WILLIAMS & SON, 171 DUNDAS STREET, LONDON, ONT.

J. A. CRODEN, Manager.



PROGRAMME

TUESDAY, APRIL 10th.
1894

Thos. W. KEENE

The Eminent Tragedian, and a carefully selected Company of Players in

... Shakespeare's Comedy in Five Acts ...

The Merchant of Venice



(Programme continued on next page.)

SOMETHING NEW.

Opera English & Canadian
Caramels. Chocolate Creams.

VERY FINEST Olives in Bulk.
French Crystalized .. Fresh Roquefort Cheese..
FRUITS.

FITZGERALD, SCANDRETT & CO.
169 Dundas Street.

ESTABLISHED 1831.

H. DAVIS & SON,
WATCHMAKERS
AND
JEWELLERS

DEALERS IN
Watches, Clooche, Jewellery, Spectacles,
Silver Plated Ware, &c.

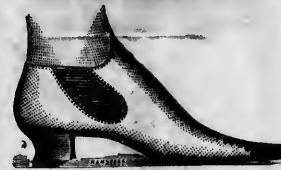
170 DUNDAS ST., LONDON, ONT.

W. T. STRONG

Dispensing
Chemist,

184 Dundas Street,
LONDON, - ONTARIO.

BROWN,



145 Dundas Street.

OUR aim has been to steadily increase our business by the excellence of our goods and the low price at which we sell them; and we are pleased to tell our patrons that we have succeeded beyond our highest expectations. The reputation enjoyed by Brown's Shoes Store as the leader in

First-Class Stylish, Fine Footwear has been well earned. Our 1894 Spring and Summer Stock will contain all the Latest Designs from the leading American and Canadian Houses, and will combine the Novel with the Serviceable.

THE FOLLOWING ARE SOME OF OUR NEWEST:—
FOR LADIES:—
"The Prince Edna," "Lapelle," "Eugene"
"Jacquette," "Eulalia," "Lunnon" (six large button), "Blucherette"
"White Stitched Oxford, with French Heel" (very pretty).

FOR GENTLEMEN:—
"New York Razor Toe Wing Tip," IN PATENT AND TAN.
"Ablington," Turned Sole Bal. (A VERY NICE DRESS SHOE.)
"Harvard," Calf Bal., IN TAN AND BLACK.
"Opera," "Bon-Ton," "Old London."

We have also full lines of staple goods of the highest grade, and in our Heavy Boot Department we sell ten per cent. cheaper than similar goods can be bought for elsewhere. In Boys', Girls' and Babies' Shoes, we carry a great variety in all grades, calculated to meet every requirement for school, play and dress.

See our Windows. Inspect our Goods. Ascertain our Prices.
BROWN,
TELEPHONE 881.

IF YOU WANT THE BEST TAKE THE "FREE PRESS." ALL THE NEWS!

IF YOU SEE IT IN THE "LONDON FREE PRESS," IT IS SO!

— TRY —
SOUTHCOTTS
 FOR Nice Suit
 Fancy Vest
 ..OR Trousers
 HEAT LINE OF LIGHT-WEIGHT OVERCOATINGS IN STOCK.
 Satisfaction Assured. Prices Right.
 361 RICHMOND STREET.

I-I-I-I-I-I-I-I-I-I

PRINTERS
 LITHOGRAPHERS
 ENGRAVERS

The
London
Printing and
Lithographing
Co'y, SUCCESSORS TO FREE PRESS
 PRINTING AND LITHO.
 DEPARTMENTS.

OFFICE,
 "FREE PRESS"
 BUILDING.

BEST WORK
 AT MODERATE
 PRICES.

I-I-I-I-I-I-I-I-I-I

TECUMSEH HOUSE
 LONDON.



Directly opposite G.T.R. depot;
 street railway past the doors;
 convenient to all the wholesale
 and retail business houses of
 city, making it the most desir-
 able hotel in the city; elevator,
 and heated throughout with
 steam.

Porter in attendance on
 arrival of all trains.

RATES, \$2.00 AND \$2.50
 PER DAY,

ACCORDING TO LOCATION.

No Extra Charge For Baggage.

C. W. DAVIS, PROP.

OF LATEST JUST ---
American Knots OPENED :
25c. & 50c.
Glendowe English Collars Reduced to ... 20c.
GRAHAM BROS.

«Programme Continued.»

CAST OF CHARACTERS.

Duke of Venice.....Mr. John E. Milton
 Antonio, the merchant.....Mr. Carl Ahrendt
 Bassanio, his friend, beloved by Portia.....
Mr. Edwin Arden
 Gratiano.....Mr. Frank Hennig
 Lorenzo, in love with Jessica.....Mr. Thomas R. Eagleson
 Salarino.....Venetian.....Mr. Robert T. Haines
 Salanio.....Gallants.....Mr. Thomas Anthony
 Old Gobbo.....Mr. Lawrence Lowell
 Launcelot Gobbo, his son.....Mr. Edward Mackay
 Tubal, a Jew.....Mr. Frank Norton
 Leonardo.....Mr. J. J. Cummings
 Belthazar.....Mr. Herbert Marret
 Stephano.....Mr. J. A. James
 Portia, a rich lady of Belmont.....Miss Henrietta Vaders
 Nerissa, her attendant.....Miss Adelaide Fitz Allen
 Jessica, daughter of Shylock.....Miss Maude Dudley
AND.....

MR. KEENE.....as.....SHYLOCK

No intermission between first and second acts.
 Place of action—City of Venice.

SYNOPSIS.

ACT I Scene 1—Street in Venice. Scene 2—Room
 in Portia's house at Belmont. Scene 3—Street in Venice.
 ACT II. Street in Venice.
 ACT III. Scene 1—Casket chamber in Portia's house.
 Scene 2—Hallway in Portia's house. Scene 3—On the Rialto.
 ACT IV. Trial Chamber in the Duke's Palace in Venice.
 ACT V. Garden in Portia's house in Belmont.

W. F. Dickson.....) For {.....Manager.
 D. F. Hennessy.....) Mr. Keene. {.....Representative.
 C. W. Vance.....) {.....Stage Manager.

(Programme continued on last page.)

McLEAN'S HARDWARE

— FOR —

Bissell's Carpet Sweepers.

WE CAN SHOW YOU TWELVE DIFFERENT STYLES SAME
 AS ARE NOW DISPLAYED BY THE BISSELL COM-
 PANY AT THE WORLD'S FAIR.

CALL AND SEE THESE GOODS

— AT —

McLEAN'S HARDWARE,
 151 Dundas Street.

Wm. Stevely & Son,
 — THE LEADING DEALERS IN —
STOVES, RANGES,
 ..AND..
HOUSE FURNISHING GOODS.
 OUR STOCK IS THE LARGEST.
 OUR PRICES THE LOWEST.
 362 RICHMOND STREET.
 'PHONE 452.

W. T. STRONG,
Dispensing
Chemist,
 184 DUNDAS ST.,
 LONDON, ONT.

..FOR..

Fine Etchings....
 —AND—
Engravings
 —TRY—
O. B. GRAVES,
 222 DUNDAS STREET.

**A WONDER-
 WORKING**

Quarter!

— IS A —

25 CENT PIECE
 INVESTED IN **3 Elegant**

GROTTO
BOUQUET
CIGARS

OF QUALITY AND AROMA, MADE OF
 EXCELLENT

HABANA FILLER,
Very Mild and Delicious.

BRENER BROS.

LOOK OUT FOR THE "LONDON FREE PRESS" ON ALL EARLY MORNING TRAINS.

Primrose & West
MINSTRELS
 ARE COMING.

At the Opera Box Office.
 MRS. NEWGOLD (at the box office).—Are opera seats on sale here?
 TICKET SELLER.—Yes, Ma'am.
 MRS. NEWGOLD.—Well, what night do Lohengrin and Carmen sing together?—*Chicago Record.*
 As He Liked It.
 UNSOPHISTICATED YOUTH (at the box office).—"I'll take two seats for to-morrow night. What are they going to play?"
 TREASURER WALTERS.—"As You Like It."
 U. V.—"As I Like It? Well, if it's all the same, you can put me down for Romeo and Joolyut."—*St. Louis Republican.*

FIND YOUR FORTUNE IN LUCKY
SANTO DOMINGO
 INVESTMENT BONDS guaranteed by the **SANTO DOMINGO GUARANTY CO.**

Allotments take place monthly, and are payable in U. S. gold coin in sums of \$160,000, \$40,000, \$20,000, etc.
 5,692 Bonds paid monthly, aggregating \$574,880. Subscription fees, \$10, \$5, \$2, \$1, 50c. and 25c.

Apply to Local Agents, of address,
ANTONIO MORA, CITY OF SANTO DOMINGO, SANTO DOMINGO.

EDY BROS.

The Artistic Photographers,

—RECEIVED—

Three First Prizes

—AND—

DIPLOMA

For Finest Display of Photography
 AT WESTERN FAIR, 1893.

Cabinet Photos, \$3 per doz.

EDY BROS.,

214 DUNDAS STREET.

«Programme Concluded.»

During the evening, incidental to the stage performance, the ORCHESTRA of the Grand Opera House, under the direction of MR. FRED. L. EVANS, will perform the following selections

- OVERTURE—"Martha," *Flotow*
 RUSSIAN MAZURKA—"La Czarine," *Gauné*
 VISIONS IN A DREAM—(Descriptive), *Lumbye*
 GALOP—"Tarif," *Schacht*
 The above programme subject to transposition

N. B.—The Orchestra of the Grand Opera House may be secured for engagements outside the theatre, by applying at or addressing the Box Office.
 The Furniture used on stage is supplied by JOHN FERGUSON & SON, Furniture Manufacturers.

NEXT * ATTRACTION.

Wednesday and Thursday,

APRIL 11 and 12.

Matinee Thursday, 3 P. M.

Mrs. Gen. Tom Thumb

And Company of Specialty Entertainers.

SPECIAL PRICES.—Matinee Prices—Balcony, children, 15c.; Balcony, adults, 25c.; Lower Floor, children, 20c.; Lower Floor, adults, 30c. NIGHT PRICES—Balcony, children, 15c.; Balcony, adults, 25c.; Lower Floor, children, 25c.; Lower Floor, adults, 35c.; Gallery, 15c.

THE FICKLE PUBLIC.

When melodrama holds the stage,
 The people for the minstrels rage.
 And when the troubadours are started,
 Their fancy turns to Avon's bard.
 But when the house with Shakespeare's filled,
 They want to see the opera billed.
 Then when the opera fills the house,
 They call for farce "mit Saus und Buns."
 And so it goes; and it's a race
 'Twixt manager and populace.
 For, spite of broad and varied range
 The fickle people always change.
 And always quit the best to see
 Some stupid meeting, billed as "Free."

COMING
 ATTRACTIONS

Are always a source of interest,—theatrical or otherwise. Our attraction just now is the new coal we are receiving daily. It comes direct from the mines, in box cars; is clean, dry, and strictly first-class. All orders, large or small, will receive our prompt and careful attention. Office, 421 Richmond St., and 316 Burwell St. A. D. Cameron & Son.

We call the attention of our business men to the PROGRAM as an advertising medium. It reaches the class of people whose trade you want, and the way to get that trade is to make yourself known.

BELTON & ROOTE,
 BILL POSTING,
 DISTRIBUTING
 ...AND...
 GENERAL ADVERTISING AGENTS

Control all the Bill Boards and Dead Walls throughout the City. Population of City, 40,000

All orders for Bill Posting, Distributing Card Tacking, and General Advertising for Western Ontario will receive prompt attention.

OFFICE: BOX OFFICE, OPERA HOUSE.

Roses, Carnations,
Palms,

Ferns, Bulbs,

J. GAMMAGE & SONS,
 213 Dundas Street.

INDIAN... TEA IMPORTING HOUSE.
 CEYLON

NEW BLENDS, DELICIOUS AND ECONOMICAL, AT MODERATE PRICES.

"English Breakfast," "Five o'clock Tea," & "Club House" Blends.
 60c. 50c. 45c.

These Blends are standard selections of choice Teas. Highly recommended to families for their fine quality and economical properties.

S. FUGE, —IMPORTER OF—
 CHOICE TEAS 212 Dundas St.
 TELEPHONE 858. LONDON.

