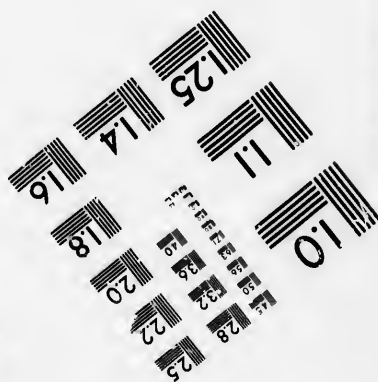
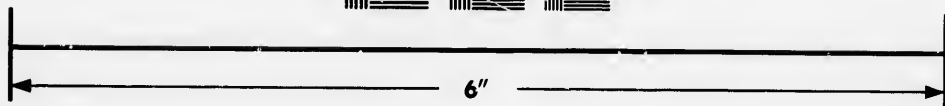
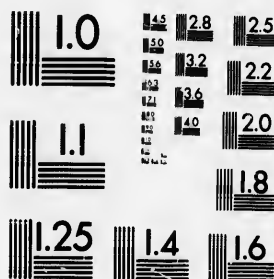


**IMAGE EVALUATION
TEST TARGET (MT-3)**



**Photographic
Sciences
Corporation**

23 WEST MAIN STREET
WEBSTER, N.Y. 14580
(716) 872-4503

**CIHM/ICMH
Microfiche
Series.**

**CIHM/ICMH
Collection de
microfiches.**



Canadian Institute for Historical Microproductions / Institut canadien de microreproductions historiques

© 1985

Technical and Bibliographic Notes/Notes techniques et bibliographiques

The Institute has attempted to obtain the best original copy available for filming. Features of this copy which may be bibliographically unique, which may alter any of the images in the reproduction, or which may significantly change the usual method of filming, are checked below.

L'institut a microfilmé le meilleur exemplaire qu'il lui a été possible de se procurer. Les détails de cet exemplaire qui sont peut-être uniques du point de vue bibliographique, qui peuvent modifier une image reproduite, ou qui peuvent exiger une modification dans la méthode normale de filmage sont indiqués ci-dessous.

- | | |
|--|--|
| <input type="checkbox"/> Coloured covers/
Couverture de couleur | <input checked="" type="checkbox"/> Coloured pages/
Pages de couleur |
| <input type="checkbox"/> Covers damaged/
Couverture endommagée | <input type="checkbox"/> Pages damaged/
Pages endommagées |
| <input type="checkbox"/> Covers restored and/or laminated/
Couverture restaurée et/ou pelliculée | <input type="checkbox"/> Pages restored and/or laminated/
Pages restaurées et/ou pelliculées |
| <input type="checkbox"/> Cover title missing/
Le titre de couverture manque | <input checked="" type="checkbox"/> Pages discoloured, stained or foxed/
Pages décolorées, tachetées ou piquées |
| <input type="checkbox"/> Coloured maps/
Cartes géographiques en couleur | <input type="checkbox"/> Pages detached/
Pages détachées |
| <input type="checkbox"/> Coloured ink (i.e. other than blue or black)/
Encre de couleur (i.e. autre que bleue ou noire) | <input type="checkbox"/> Showthrough/
Transparence |
| <input type="checkbox"/> Coloured plates and/or illustrations/
Planches et/ou illustrations en couleur | <input type="checkbox"/> Quality of print varies/
Qualité inégale de l'impression |
| <input type="checkbox"/> Bound with other material/
Relié avec d'autres documents | <input type="checkbox"/> Includes supplementary material/
Comprend du matériel supplémentaire |
| <input type="checkbox"/> Tight binding may cause shadows or distortion
along interior margin/
La reliure serrée peut causer de l'ombre ou de la
distortion le long de la marge intérieure | <input type="checkbox"/> Only edition available/
Seule édition disponible |
| <input type="checkbox"/> Blank leaves added during restoration may
appear within the text. Whenever possible, these
have been omitted from filming/
Il se peut que certaines pages blanches ajoutées
lors d'une restauration apparaissent dans le texte,
mais, lorsque cela était possible, ces pages n'ont
pas été filmées. | <input type="checkbox"/> Pages wholly or partially obscured by errata
slips, tissues, etc., have been refilmed to
ensure the best possible image/
Les pages totalement ou partiellement
obscurcies par un feuillet d'errata, une pelure,
etc., ont été filmées à nouveau de façon à
obtenir la meilleure image possible. |
| <input checked="" type="checkbox"/> Additional comments: /
Commentaires supplémentaires: | [Printed ephemera] 1 sheet (verso blank) |

This item is filmed at the reduction ratio checked below/
Ce document est filmé au taux de réduction indiqué ci-dessous.

10X	14X	18X	22X	26X	30X
<input type="checkbox"/>	<input type="checkbox"/>	<input type="checkbox"/>	<input checked="" type="checkbox"/>	<input type="checkbox"/>	<input type="checkbox"/>
12X	16X	20X	24X	28X	32X

The copy filmed here has been reproduced thanks to the generosity of:

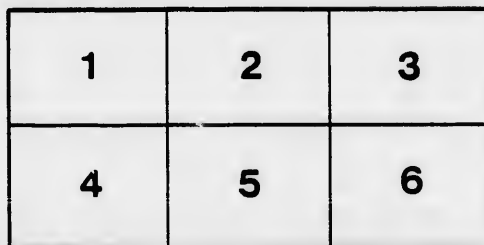
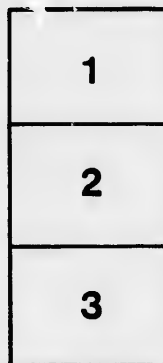
D. B. Weldon Library
University of Western Ontario
(Regional History Room)

The images appearing here are the best quality possible considering the condition and legibility of the original copy and in keeping with the filming contract specifications.

Original copies in printed paper covers are filmed beginning with the front cover and ending on the last page with a printed or illustrated impression, or the back cover when appropriate. All other original copies are filmed beginning on the first page with a printed or illustrated impression, and ending on the last page with a printed or illustrated impression.

The last recorded frame on each microfiche shall contain the symbol \rightarrow (meaning "CONTINUED"), or the symbol ∇ (meaning "END"), whichever applies.

Maps, plates, charts, etc., may be filmed at different reduction ratios. Those too large to be entirely included in one exposure are filmed beginning in the upper left hand corner, left to right and top to bottom, as many frames as required. The following diagrams illustrate the method:



L'exemplaire filmé fut reproduit grâce à la générosité de:

D. B. Weldon Library
University of Western Ontario
(Regional History Room)

Les images suivantes ont été reproduites avec le plus grand soin, compte tenu de la condition et de la netteté de l'exemplaire filmé, et en conformité avec les conditions du contrat de filmage.

Les exemplaires originaux dont la couverture en papier est imprimée sont filmés en commençant par le premier plat et en terminant soit par la dernière page qui comporte une empreinte d'impression ou d'illustration, soit par le second plat, selon le cas. Tous les autres exemplaires originaux sont filmés en commençant par la première page qui comporte une empreinte d'impression ou d'illustration et en terminant par la dernière page qui comporte une telle empreinte.

Un des symboles suivants apparaîtra sur la dernière image de chaque microfiche, selon le cas: le symbole \rightarrow signifie "A SUIVRE", le symbole ∇ signifie "FIN".

Les cartes, planches, tableaux, etc., peuvent être filmés à des taux de réduction différents. Lorsque le document est trop grand pour être reproduit en un seul cliché, il est filmé à partir de l'angle supérieur gauche, de gauche à droite, et de haut en bas, en prenant le nombre d'images nécessaire. Les diagrammes suivants illustrent la méthode.

ails
du
odifier
une
mage

rrata
o

pelure,
n à

NORMAL SCHOOL FOR UPPER CANADA.

THIRTY-FIFTH SESSION, JUNE, 1866.

Examiners in Department of Mathematics, Chemistry, and Natural Philosophy:

JOHN HERBERT SANGSTER, Esq., M.A., *Second Master, Normal School.*

REV. WILLIAM ORMISTON, D.D.

NATURAL PHILOSOPHY.—BOTH DIVISIONS.

Time—Three Hours.

1. Describe the *barometer*—explaining the cause of its regular and irregular oscillations and the circumstances upon which its reliability as a scientific instrument depends.
2. Explain the effect of *friction* in machinery—the different expedients employed for overcoming it, and state Coulomb's laws in regard to both sliding and rolling friction.
3. Describe the production of sound—the circumstances upon which its pitch and intensity depend, state the rapidity with which sounds travel and the circumstances determining the distances to which they may be heard.
4. Describe the different modes of determining the specific gravity of liquids.
5. Briefly describe the human ear and explain the function of each part. In what manner does the organ of hearing become modified in the lower classes of animals.
6. Describe the common pump and the fire engine, and give the theory of their action.
7. State the leading ideas that enter into the construction of the different parts of the condensing steam engine.
8. Describe the production of echoes—explaining clearly how the number of syllables repeated is determined.
9. The flood-gate of a canal is 12 feet wide, and is immersed in water perpendicularly to the depth of $9\frac{1}{2}$ feet—the water being just level with its upper edge:—Required the pressure:
 - I. On one side of the whole gate.
 - II. On the lowest three-sevenths of the gate.
 - III. On the uppermost two-fifths of the gate.
 - IV. On the middle seven-ninths of the gate.
10. What power will sustain a weight of 40000 lbs. by means of a differential wheel and axle, the radii of the axles being $2\frac{1}{2}$ and $3\frac{3}{4}$ inches, and the radius of the wheel 25 inches.
11. In what time will a locomotive of 90 horse powers carry a train whose weight is 55 tons, from Toronto to Kingston, a distance of 180 miles—the first-fourth of the journey being up an incline of 7 in 2000—the last three-fourths down an incline of 3 in 10000—the rate of the train for the first-fourth being 20 miles per hour, and the average atmospheric resistance for the last three-fourths being 300 lbs.—friction as usual?
12. The mercury in a barometer at the summit of a mountain stands at the height of 12 inches, while that in another barometer at its base stands at the height of 29 inches. Required the height of the mountain.
13. Assuming that 100 cubic inches of atmospheric air at the surface of the sea weigh 32 grains, what would be the weight of 100 cubic inches taken from a height of say 27 miles above the surface of the earth?
14. A high pressure steam engine, whose piston has an area of 280 square inches, and makes 20 strokes per minute—the boiler evaporating $\frac{2}{3}$ of a cubic foot of water per minute into 180 cubic feet of steam, under a pressure of 65 lbs. to the square inch—pumps 40 cubic feet of water per hour from a mine 150 feet deep. The residue of the work of the engine is consumed in working a circular saw 10 feet in diameter, against oak timber 2 feet in thickness. Now, assuming that the peripheral resistance is directly proportional to the thickness of the timber, that in pine it is 20 lbs. to the linear inch, and that the resistance of oak is to that of pine as 20 to 17, how many revolutions will the saw make per minute?

