



Souvenir of Princess St. Methodist Church.



Organized 1889



Enlarged and Remodeled 1902.



Vesper

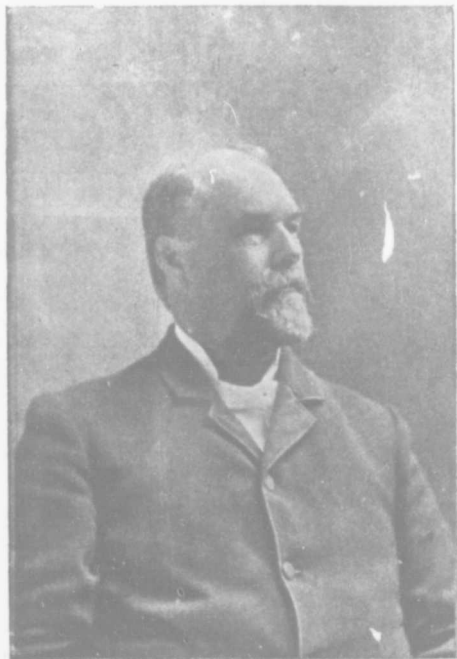
"I was glad when they said unto me,
let us go into the House of the Lord."

Souvenir of
Princess St.
Methodist
Church.

1889-1902.

Rev. John Robson, B.A., Pastor.

"Let us enter into His gates with thanksgiving,
and into His courts with praise."



Rev. J. F. Betts, Pastor, 1889-1893.

First Officials Princess St. Church, 1889.

Trustees.

A. H. RIDLEY.	T. J. JANES.
E. B. SENTELL.	ALEX. HOGG.
JNO. BRENTON.	E. A. BROWN.
JAS. HOGG.	R. GOSSE.

Quarterly Official Board.

REV. J. F. BETTS, PASTOR.

E. A. BROWN.	J. BUNTING.
C. ARKELL.	A. DINSMORE.
D. VAN DUSEN.	J. BRENTON.
W. T. KELLY.	A. E. CARTER
E. B. SENTELL.	R. GOSSE.
S. CARTER.	A. H. RIDLEY.

Sabbath School.

J. BRENTON, *Superintendent.*
G. R. GORDON, *Sec.-Treas.*
A. McINTYRE, *Librarian.*

J. BUNTING, *Class Leader.*
W. LAWRENCE, *Choir Leader.*
MISS C. CAMPBELL, *Organist.*
A. E. CARTER, *Pres. of E. League.*



Old Princess Street Methodist Church.

History of Princess St. Methodist Church.

AT the Conference of 1888 it was recognised that Vancouver was insufficiently supplied with Methodist Churches, so permission was granted to divide the city into two stations, Carrall St. being the dividing line, the new Mission to include what is now known as the East end together with Mount Pleasant. That year, however, no Minister was sent, and Rev. E. Robson and Mr. W. J. Trythall commenced the work on December 23rd, in the City Police Court Chambers, and carried it on for some time. In 1889 Rev. J. F. Betts was appointed pastor, and at once began the work of organization. With his characteristic energy he set about procuring property, and ere the first year had rolled round, suitable Church and parsonage buildings were erected for the use of the congregation and he was able to report a membership of 97 to the ensuing Conference and declared the work self-supporting from the first.



Rev W. W. Baer, Pastor 1893-1897.



In 1893 Rev. W. W. Baer succeeded to the pastorate and remained for four years, when Rev. R. Whittington, M.A., was sent. During his term an agitation began for a new edifice with improved Sunday School facilities, but a large portion of the old mortgage remaining together with considerable other debts prevented the realization of this desire. However, by taking advantage of the Twentieth Century Thanksgiving Fund movement, a fund was started for the wiping out of the debt. This had advanced to goodly proportions when the Conference of 1900 sent the present pastor, who, by following the policy of his predecessor, succeeded in eliminating the old debt on December 17th, 1900.





Rev. R. Whittington, M.A., Pastor 1897-1900.



To build was then, a necessity as the Sabbath School overflowed the accommodation and many repairs would be required to keep the building in fitness for worship, so after much and mature consideration of the needs, it was decided to build the commodious structure now being erected.

The new Church will be of modern design and calculated to give the greatest accommodation for the least money. The new edifice will be 73 x 58 feet, with a seating capacity for 475 people. At one end will be the choir vestry, choir gallery and minister's vestry. The pulpit is situated in the corner adjoining the Sunday schoolroom, with the seats which are of segment form, ranged round the pulpit in amphitheatre order. The main entrance is situated in the tower and the aisles will be so arranged as to admit of easy distribution while the incline of the floor will be such as to give an uninterrupted view to all. Large folding doors will unite the main auditorium with the lecture room, which, when open will provide seating for 200 more, all in as good view of the pulpit as those in the main auditorium.





Rev. John Robson, B.A., Present Pastor.

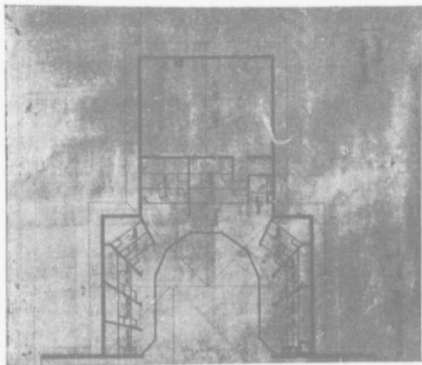


The old building will be converted into a modern Sunday Schoolroom with a gallery around the transept, above and beneath which will be sixteen class rooms. A ceiling will be put in the nave, the downstairs, part of which will contain a large infant classroom joined to the lecture room by folding doors, a bible class room, kitchen and lavatory. While the upstairs part will be for a commodious ladies' parlor, which may also be used for an Epworth League room with a seating capacity of one hundred. The above mentioned rooms, together with the library make a total of 25. The buildings will be heated and ventilated by what is known as the *plenum*, or full, system. An electric fan situated in the air shaft will draw fresh air from without, and force it through the furnace into either building as desired, through registers eight feet above the floors. Outlets for cold and foul air will be situated in the base of the walls.



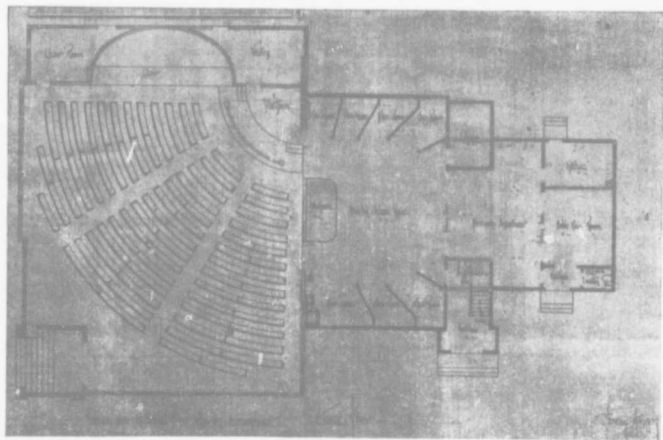


The New Princess Street Methodist Church.



Balcony Plan.

By this means the building will be kept so full of fresh, warm air that when a door is opened, the air within will at once rush out, instead of the cold air rushing in, as is the result from the old *vacuum* system. Hence the danger from draughts will be practically eliminated. In Summer, cool, fresh air will be supplied by the same means. Heaters will be placed in the ladies' parlor and bible class rooms, so that it will not be necessary to start the large furnace for all small meetings. All the windows facing on the front streets are to be stained glass and will supply an ample amount of light even on a cloudy day. A large electric chandelier in the centre of the auditorium and brackets on the walls will supply the artificial light. It will thus be seen that all departments of the church life have received consideration, and we rejoice that all are working in harmony, determined to make a success of the undertaking and of the cause so dear to all.



Floor Plan.

Present Officials

Princess St. Church, 1902.

Trustee Board.

CAPT. NEWCOMBE.	A. E. CARTER.
E. B. SENTELL	GEO. E. KYLE.
JAMES HOGG.	R. G. CLARKE.
ALEX. HOGG.	F. T. SCHOOLEY.
A. McINTYRE.	T. S. SMITH.
T. J. JANES.	GEO. HOBSON.
TALBOT WARD.	A. MacDONALD.

Quarterly Official Board.

Stewards.

G. E. KYLE, *Rec. St.*
F. BRILL, *Env. St.*
JNO. KEMP.
THOS. HESLIP.
WM. BELL.
GEO. BRESSLER.
JNO. HORNER.

Society Representatives.

A. MacDONALD.
J. W. ROBINSON.
WM. CARTER.
CAPT. NEWCOMBE.
G. FORSYTHE.
W. BRISTOL.
MRS. F. BRILL.

Sunday School Superintendents:

T. S. SMITH. W. J. BURNS.

Epworth League President :—W. H. PARKIN.

Present Officials Cont'd.

LADIES' AID OFFICIARY.

President : MRS. WADDELL.

Treasurer : MRS. VICARS.

Secretary : MRS. T. H. BUTLER.

WOMEN'S MISSIONARY SOCIETY.

President : MRS. JAS. HOGG.

Secretary : MRS. F. T. SCHOOLEY.

Treasurer : MRS. NEWCOMBE.

EPWORTH LEAGUE.

Hon. Pres. - REV. JOHN ROBSON.

President - - W. H. PARKIN.

1st. Vice. Pres. J. W. ROBINSON.

2nd. " " MISS M. BURPEE.

3rd. " " MISS E. HOGG.

4th. " " MISS M. E. ROGERSON.

Recording Sec. MISS ETHEL SMITH.

Correspond. Sec. MISS TRESSA ROGERSON.

Financial Sec. L. C. KYLE.

Treasurer - J. W. BURNS.

Organist - - MISS A. HORNER.

Rep. to Local Union JAS. A. INGRAM.

Present Officials Cont'd.

SABBATH SCHOOL PRINCESS ST.

T. S. SMITH, *Superintendent.*
GEO. E. KYLE, *Secretary.*
MISS E. HOGG, *Treasurer.*
LORNE C. KYLE, *Librarian.*

BRANCH SABBATH SCHOOL.

W. J. BURNS, *Superintendent.*
W. GALLAGER, *Secretary.*
A. W. FINBOW, *Treasurer.*
J. W. WATSON, *Librarian.*

Choir Leader: MR. G. S. FORSYTH.
Organist: MISS K. BURPEK.



BUILDING COMMITTEE.

A. MACDONALD, <i>Ch.</i>	R. G. CLARKE.
A. MCINTYRE, <i>Sec.</i>	F. BRILL.
F. T. SCHOOLEY.	T. WARD.

WAYS AND MEANS COMMITTEE.

GEO. HOBSON, <i>Ch.</i>	T. S. SMITH.
GEO. E. KYLE, <i>Sec.</i>	F. T. SCHOOLEY.

Architect: MR. THOS. HOOPER.

Builder: MR. A. E. CARTER.

