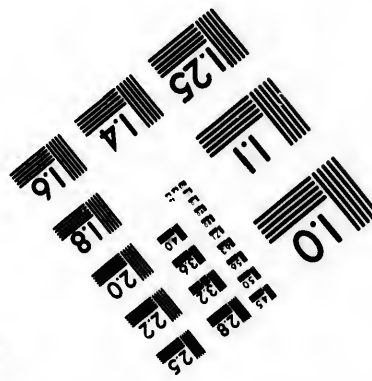
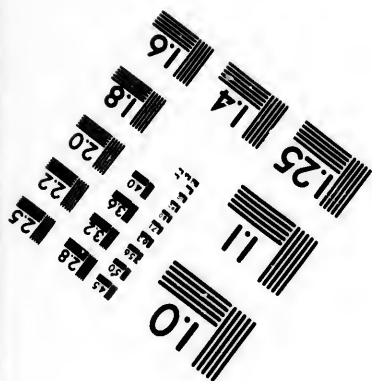
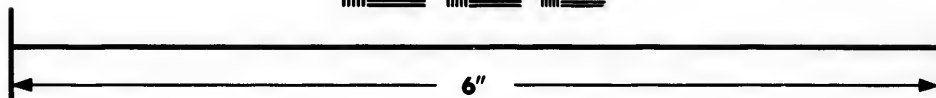
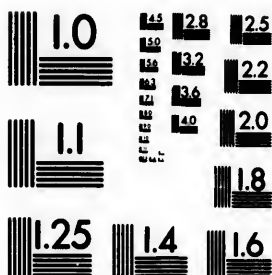


**IMAGE EVALUATION
TEST TARGET (MT-3)**



**Photographic
Sciences
Corporation**

23 WEST MAIN STREET
WEBSTER, N.Y. 14580
(716) 872-4503

14 12.8 12.5
13 13.2
12 12.2
11 12.0
10 11.8

**CIHM/ICMH
Microfiche
Series.**

**CIHM/ICMH
Collection de
microfiches.**



Canadian Institute for Historical Microreproductions / Institut canadien de microreproductions historiques

11
10
9
8
7
6
5
4
3
2
1

© 1986

Technical and Bibliographic Notes/Notes techniques et bibliographiques

The Institute has attempted to obtain the best original copy available for filming. Features of this copy which may be bibliographically unique, which may alter any of the images in the reproduction, or which may significantly change the usual method of filming, are checked below.

L'Institut a microfilmé le meilleur exemplaire qu'il lui a été possible de se procurer. Les détails de cet exemplaire qui sont peut-être uniques du point de vue bibliographique, qui peuvent modifier une image reproduite, ou qui peuvent exiger une modification dans la méthode normale de filmage sont indiqués ci-dessous.

- Coloured covers/
Couverture de couleur
- Covers damaged/
Couverture endommagée
- Covers restored and/or laminated/
Couverture restaurée et/ou pelliculée
- Cover title missing/
Le titre de couverture manque
- Coloured maps/
Cartes géographiques en couleur
- Coloured ink (i.e. other than blue or black)/
Encre de couleur (i.e. autre que bleue ou noire)
- Coloured plates and/or illustrations/
Planches et/ou illustrations en couleur
- Bound with other material/
Relié avec d'autres documents
- Tight binding may cause shadows or distortion along interior margin/
La reliure serrée peut causer de l'ombre ou de la distorsion le long de la marge intérieure
- Blank leaves added during restoration may appear within the text. Whenever possible, these have been omitted from filming/
Il se peut que certaines pages blanches ajoutées lors d'une restauration apparaissent dans le texte, mais, lorsque cela était possible, ces pages n'ont pas été filmées.
- Additional comments:/ [Printed ephemers] 1 sheet (verso blank)
Commentaires supplémentaires:

- Coloured pages/
Pages de couleur
- Pages damaged/
Pages endommagées
- Pages restored and/or laminated/
Pages restaurées et/ou pelliculées
- Pages discoloured, stained or foxed/
Pages décolorées, tachetées ou piquées
- Pages detached/
Pages détachées
- Showthrough/
Transparence
- Quality of print varies/
Qualité inégale de l'impression
- Includes supplementary material/
Comprend du matériel supplémentaire
- Only edition available/
Seule édition disponible
- Pages wholly or partially obscured by errata slips, tissues, etc., have been refilmed to ensure the best possible image/
Les pages totalement ou partiellement obscurcies par un feuillet d'errata, une pelure, etc., ont été filmées à nouveau de façon à obtenir la meilleure image possible.

This item is filmed at the reduction ratio checked below/
Ce document est filmé au taux de réduction indiqué ci-dessous.

10X	12X	14X	16X	18X	20X	22X	24X	26X	28X	30X	32X
									/		

The copy filmed here has been reproduced thanks to the generosity of:

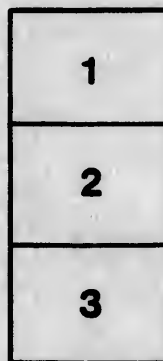
D. B. Weldon Library
University of Western Ontario
(Regional History Room)

The images appearing here are the best quality possible considering the condition and legibility of the original copy and in keeping with the filming contract specifications.

Original copies in printed paper covers are filmed beginning with the front cover and ending on the last page with a printed or illustrated impression, or the back cover when appropriate. All other original copies are filmed beginning on the first page with a printed or illustrated impression, and ending on the last page with a printed or illustrated impression.

The last recorded frame on each microfiche shall contain the symbol \rightarrow (meaning "CONTINUED"), or the symbol ∇ (meaning "END"), whichever applies.

Maps, plates, charts, etc., may be filmed at different reduction ratios. Those too large to be entirely included in one exposure are filmed beginning in the upper left hand corner, left to right and top to bottom, as many frames as required. The following diagrams illustrate the method:



L'exemplaire filmé fut reproduit grâce à la générosité de:

D. B. Weldon Library
University of Western Ontario
(Regional History Room)

Les images suivantes ont été reproduites avec le plus grand soin, compte tenu de la condition et de la netteté de l'exemplaire filmé, et en conformité avec les conditions du contrat de filmage.

Les exemplaires originaux dont la couverture en papier est imprimée sont filmés en commençant par le premier plat et en terminant soit par la dernière page qui comporte une empreinte d'impression ou d'illustration, soit par le second plat, selon le cas. Tous les autres exemplaires originaux sont filmés en commençant par la première page qui comporte une empreinte d'impression ou d'illustration et en terminant par la dernière page qui comporte une telle empreinte.

Un des symboles suivants apparaîtra sur la dernière image de chaque microfiche, selon le cas: le symbole \rightarrow signifie "A SUIVRE", le symbole ∇ signifie "FIN".

Les cartes, planches, tableaux, etc., peuvent être filmés à des taux de réduction différents. Lorsque le document est trop grand pour être reproduit en un seul cliché, il est filmé à partir de l'angle supérieur gauche, de gauche à droite, et de haut en bas, en prenant le nombre d'images nécessaire. Les diagrammes suivants illustrent la méthode.

IN CHA

John H. Little aga

AND OT

TO BE

SOLD BY PUB

In pursuance of a decree for sale bearing date the
approbation of James Shanly, Esq., the

SATURDAY SEVENTH

ANCERY

against Thos. Little
OTHERS.

TO BE

PUBLIC AUCTION

ing date the fourteenth day of June, 1876, and with the
y, Esq., the Master of this Court at London, on

FIFTEENTH DAY OF OCTOBER

SATURDAY, SEVENTH

1876, at two o'clock in the afternoon, by A. S. EMERY,
London, the follo



NAMELY.

FIRST.—The south half of Lot number sixty-two, on the east side of the Westminister, containing by admeasurement One Hundred Acres, more or less. Dwelling House nearly completed; also two Frame Barns, not quite finished, e

SECOND.—The south half of Lot number fifty-nine, west, on the North containing by admeasurement One Hundred Acres, more or less. About fifty-f

THIRD.—The north half of Lot number sixty-two, east, on the North Bran containing by admeasurement One Hundred Acres, more or less. About forty Timbered.

And **FOURTH.**—The north half of Lot number sixty-one, east of the Talbo admeasurement One Hundred Acres, more or less. About twelve acres of this l

All the above Lands are situate on the leading Gravel Road midway betwe

The property will be sold in four parcels as above, and subject to a reserve

All parties to the suit, with the exception of the plaintiff, are to be at libert

The purchaser shall, on the day of Sale, pay down a deposit in the proporti the residue into Court within thirty days thereafter, without interest.

In all other respects the conditions of Sale are the standing conditions of t

Further particulars and conditions of Sale may be had at the law offices Meredith, London; or of Messrs. Macdougall & Coyne, St. Thomas, or of the A

Dated this 25th day of August, A. D., 1876.

WARREN ROCK,

Vendor's Solicitor.

(Advertiser Steam

FIFTH DAY OF OCTOBER

**S. EMERY, Auctioneer, at his Rooms, Dundas Street,
on, the following**

NOTICES!

NOTICES.

On the east side of the North Branch of the Talbot Road, in the Township of Westminister, more or less. About eighteen acres of this lot are cleared. There is a Brick House quite finished, each 30x40.

On the North Branch of the Talbot Road, in said Township of Westminister, more or less. About fifty-five acres are cleared.

On the North Branch of the Talbot Road, in the said Township of Westminister, more or less. About forty-five acres of this Lot are partially cleared, the residue is well

located on the east of the Talbot Road, in the said Township of Westminister, containing by and by five acres of this Lot are cleared. There is a small Frame House and Orchard.

located midway between St. Thomas and London.

Subject to a reserve bidding on each.

Buyers are to be at liberty to bid.

Each bidder to pay in the proportion of \$10 for every \$100 of his purchase money, and shall pay interest.

On the conditions of the said Court of Chancery.

For further particulars apply to the law offices of Messrs. Cronyn, Martin & Kew, Warren Rock, or W. R. Thomas, or of the Auctioneer.

J. SHANLY,

Master in Chancery.

(Printed and Published by Advertiser Steam Presses, London.)

