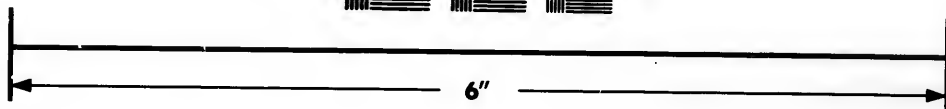
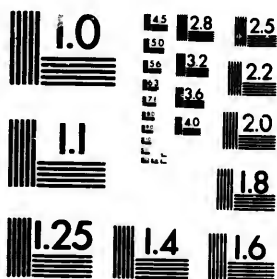


# IMAGE EVALUATION TEST TARGET (MT-3)



Photographic  
Sciences  
Corporation

23 WEST MAIN STREET  
WEBSTER, N.Y. 14580  
(716) 872-4503

**CIHM/ICMH  
Microfiche  
Series.**

**CIHM/ICMH  
Collection de  
microfiches.**



**Canadian Institute for Historical Microreproductions / Institut canadien de microreproductions historiques**

**© 1983**

# Technical and Bibliographic Notes/Notes techniques et bibliographiques

The Institute has attempted to obtain the best original copy available for filming. Features of this copy which may be bibliographically unique, which may alter any of the images in the reproduction, or which may significantly change the usual method of filming, are checked below.

L'Institut a microfilmé le meilleur exemplaire qu'il lui a été possible de se procurer. Les détails de cet exemplaire qui sont peut-être uniques du point de vue bibliographique, qui peuvent modifier une image reproduite, ou qui peuvent exiger une modification dans la méthode normale de filmage sont indiqués ci-dessous.

- ☒ Coloured covers/  
Couverture de couleur
- ☐ Covers damaged/  
Couverture endommagée
- ☐ Covers restored and/or laminated/  
Couverture restaurée et/ou pelliculée
- ☐ Cover title missing/  
Le titre de couverture manque
- ☐ Coloured maps/  
Cartes géographiques en couleur
- ☐ Coloured ink (i.e. other than blue or black)/  
Encre de couleur (i.e. autre que bleue ou noire)
- ☐ Coloured plates and/or illustrations/  
Planches et/ou illustrations en couleur
- ☐ Bound with other material/  
Relié avec d'autres documents
- ☐ Tight binding may cause shadows or distortion along interior margin/  
La reliure serrée peut causer de l'ombre ou de la distortion le long de la marge intérieure
- ☐ Blank leaves added during restoration may appear within the text. Whenever possible, these have been omitted from filming/  
Il se peut que certaines pages blanches ajoutées lors d'une restauration apparaissent dans le texte, mais, lorsque cela était possible, ces pages n'ont pas été filmées.
- ☐ Additional comments:/  
Commentaires supplémentaires:

- ☐ Coloured pages/  
Pages de couleur
- ☐ Pages damaged/  
Pages endommagées
- ☐ Pages restored and/or laminated/  
Pages restaurées et/ou pelliculées
- ☒ Pages discoloured, stained or foxed/  
Pages décolorées, tachetées ou piquées
- ☐ Pages detached/  
Pages détachées
- ☒ Showthrough/  
Transparence
- ☐ Quality of print varies/  
Qualité inégale de l'impression
- ☐ Includes supplementary material/  
Comprend du matériel supplémentaire
- ☐ Only edition available/  
Seule édition disponible
- ☐ Pages wholly or partially obscured by errata slips, tissues, etc., have been refilmed to ensure the best possible image/  
Les pages totalement ou partiellement obscurcies par un feuillet d'errata, une pelure, etc., ont été filmées à nouveau de façon à obtenir la meilleure image possible.

This item is filmed at the reduction ratio checked below/  
Ce document est filmé au taux de réduction indiqué ci-dessous.

10X	12X	14X	16X	18X	20X	22X	24X	26X	28X	30X	32X
						✓					

The copy filmed here has been reproduced thanks to the generosity of:

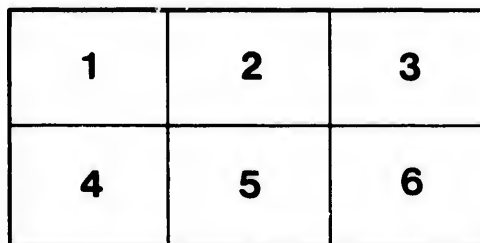
Hamilton Public Library

The images appearing here are the best quality possible considering the condition and legibility of the original copy and in keeping with the filming contract specifications.

Original copies in printed paper covers are filmed beginning with the front cover and ending on the last page with a printed or illustrated impression, or the back cover when appropriate. All other original copies are filmed beginning on the first page with a printed or illustrated impression, and ending on the last page with a printed or illustrated impression.

The last recorded frame on each microfiche shall contain the symbol  $\longrightarrow$  (meaning "CONTINUED"), or the symbol  $\nabla$  (meaning "END"), whichever applies.

Maps, plates, charts, etc., may be filmed at different reduction ratios. Those too large to be entirely included in one exposure are filmed beginning in the upper left hand corner, left to right and top to bottom, as many frames as required. The following diagrams illustrate the method:



L'exemplaire filmé fut reproduit grâce à la générosité de:

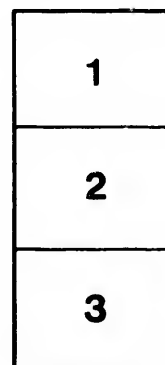
Hamilton Public Library

Les images suivantes ont été reproduites avec le plus grand soin, compte tenu de la condition et de la netteté de l'exemplaire filmé, et en conformité avec les conditions du contrat de filmage.

Les exemplaires originaux dont la couverture en papier est imprimée sont filmés en commençant par le premier plat et en terminant soit par la dernière page qui comporte une empreinte d'impression ou d'illustration, soit par le second plat, selon le cas. Tous les autres exemplaires originaux sont filmés en commençant par la première page qui comporte une empreinte d'impression ou d'illustration et en terminant par la dernière page qui comporte une telle empreinte.

Un des symboles suivants apparaîtra sur la dernière image de chaque microfiche, selon le cas: le symbole  $\longrightarrow$  signifie "A SUIVRE", le symbole  $\nabla$  signifie "FIN".

Les cartes, planches, tableaux, etc., peuvent être filmés à des taux de réduction différents. Lorsque le document est trop grand pour être reproduit en un seul cliché, il est filmé à partir de l'angle supérieur gauche, de gauche à droite, et de haut en bas, en prenant le nombre d'images nécessaire. Les diagrammes suivants illustrent la méthode.



ails  
du  
modifier  
une  
nage

rate  
o

elure,  
à

LIST OF  
BENCH MARKS

IN CONNECTION WITH THE

Established Levels & Profiles

— OF THE —

CITY OF HAMILTON.

WM. HASKINS,

*City Engineer.*

E. G. BARROW,

*Assistant Engineer.*

CITY HALL, HAMILTON, 1885.

HAMILTON PUBLIC LIBRARY

ROBT. RAW & CO., PRINTERS AND WORD-ENGRAVERS, HAMILTON.

# HAMILTON PUBLIC LIBRARY

Reference Department

Shelf Number 9926.94

Cana H18

H

This Book is not to be taken out  
of the room.

LIST OF  
BENCH MARKS

IN CONNECTION WITH THE

Established Levels & Profiles

—OF THE—

CITY OF HAMILTON. *city engineer d-3*

WM. HASKINS,

*City Engineer.*

E. G. BARROW,

*Assistant Engineer.*

HAMILTON PUBLIC LIBRARY

CITY HALL, HAMILTON, 1885.

17-32 1963

Cop. 1

HAMILTON PUBLIC LIBRARY

Bar  
Ba  
Br  
Ca  
Ca  
Ca  
CH  
Co  
Do  
Do  
Ea  
En  
Fe  
Ho  
In  
Jan  
Jo  
Ki  
Ki  
Lo  
Ma  
Pa  
Pe  
Qu  
Ra  
Sp  
Vic  
Wo  
Wo  
Yo



# INDEX.

	PAGE.
Barton Street.....	17
Bay Street.....	9
Breadalbane Street.....	14
Caroline Street .....	10
Cathcart Street.....	5
Catherine Street.....	4
Charles Street.....	14
Concession Street.....	14
Devonport Street .....	14
Dundurn Street.....	13
East Avenue.....	7
Emerald Street.....	7
Ferguson Avenue and Cherry Street.....	6
Hess Street .....	11
Inchbury Street.....	14
James Street.....	2
John Street.....	3
King Street East .....	15
King Street West .....	15
Locke Street.....	12
Mary Street.....	5
Park Street.....	9
Pearl Street.....	12
Queen Street.....	11
Ray Street.....	13
Spring and Liberty Streets.....	6
Victoria Avenue.....	8
Wellington Street.....	6
Wentworth Street.....	8
York Street.....	16

is  
m  
b  
M

a

w  
a

## PREFACE.

---

The Datum from which these levels are taken is the High Water Level of Lake Ontario, and may be defined as a Horizontal Plane, 63.75 feet below the Bench Mark on the stone, work at Masonic Hall, marked with an arrow head.

All other Bench Marks recorded in this Book, are elevations above datum.

All the Bench marks are cut into the stone or wood work, as the case may be, in the form of an arrow head.

I.

I.

## JAMES STREET.

		Elevation in feet.
1	On stone cover of Hydrant Chamber, west side of James, opposite Guise Street.....	15.13
2	On stone cover of Hydrant Chamber, west side of James Street, opposite south limit of Burlington Street.....	28.18
3	On stone cover of Hydrant Chamber, west of James Street, 12 feet south of Wood Street...	29.11
4	On stone cover of Hydrant Chamber, west side of James Street, 12 feet south of south limit of McCaulay St.....	31.18
5	Sill of Window of Munro's Grocery, south west corner of James and Simcoe Streets, window, faces James Street, and is a little south of shop door.....	40.92
6	On stone plinth of Police Station, west side of James Street, 66 feet north of north limit of Stuart Street.....	41.21
7	On stone door step of Brick Scale Works, west side of James Street, south door faces Christ Church Cathedral, 78 feet south of Colborne Street.....	59.57
8	On Plinth west side of Central Door of Masonic Hall.....	63.75
9	On stone door step of Drug Store, east side of James Street, opposite the market, occupied by Harrison Bros. formerly Archdale Wilson	67.11
10	On stone door step of Water Works Office, City Hall, N. W. Corner.....	71.67
11	On second stone door step of Law Offices, known as Victoria Chambers, east side of James Street, 110 feet north of north limit of Jackson St..	78.71
12	On lowest stone step of House No. 7 east side of James Street, and 100 feet south of south limit of Hunter Street.....	82.66



		Elevation in feet.
13	On stone cover of Hydrant Chamber, east side of James St., between Bold and Hunter Sts...	82.18
14	On stone work of Stop Valve Chamber on west limit of James St. and centre of Duke St.....	98.08
15	On stone coping of wall at house No. 105 east side of James, near Catharina Street.....	97.85
16	On stone cover of Hydrant Chamber opposite house No. 147, east side of James Street, 156 feet south of south limit of Herkimer St.....	125.17
17	On stone work of Gas Syphon, west limit of James Street and South side of Herkimer St.....	135.71
18	On Coping of Mouth of Sewer, opposite Markland Street.....	157.00

### JOHN STREET.

19	On stone cover of Hydrant Chamber, south west corner of John and Guise Streets.....	19 66
20	On window sill of front door of frame store, south west corner of Simcoe and John Streets.....	30 02
21	On sill of front door of brick store, north west corner of Stuart and John Streets.....	36.20
22	On plinth of Larkin's Block, north east corner King and John Streets, being the same level as floor.....	68 33
23	On stone sill of front door of John Street Meat Market.....	80.29
24	On stone sill of front door of brick store, north east corner of Catharina and John Sts.....	86.89
25	On stone cover of Hydrant Chamber, east side of John Street, between Catharina and Maria Streets, 93 feet south of Maria Street.....	92.67 ?
26	On stone cover of Hydrant Chamber, east side of John Street, between Catharina and Maria Sts., 93 feet south of Maria Street.....	156.30 ?





## CATHERINE STREET.

		Elevation in feet.
27	On Iron cover of Hydrant Chamber, south side of Strachan Street, 10 feet west of west limit of Catharina Street. ....	29 13
28	On stone cover of Hydrant Chamber, west side of Catharine Street, near Murray St.....	34.92
29	On sill of front door of brick store or Tavern, south west corner of Catharine and Barton Sts., west side of Catharine Street.....	32.22
30	On door step of House No. 119, west side of Catharine St., between Robert and Barton Sts	37 98
31	On stone cover of Hydrant Chamber, west side of Catharine St., 75 feet south of Robert St....	38.84
32	On stone cover of Hydrant Chamber, west side of Catharine Street, opposite House No. 85...	44.55
33	On stone cover of Hydrant Chamber, west side of Catharine Street, 183 feet North of Gore St.	50.66
34	On stone cover of Hydrant Chamber, west side of Catharine Street, opposite house No. 37, 173 feet south of Gore Street.....	54.68
35	On cut stone plinth of A. Hope's Building, west side of Catharine St., about 50 feet north of King Street. ....	67 14
36	On sill of south window of house No. 2, Catharine St., 66 feet south of south limit of King St....	70 91
37	On corner of plinth of brick house, No. 22 west side of Catharine Street, between Main and Jackson Streets.....	71.09
38	On north east angle of plinth of brick store, north west corner of Catharine and Hunter Streets..	75.83
39	On stone sill of front door of tavern, north west corner of Jackson and Catharine Streets.....	73 60



- |    |   |       |
|----|---|-------|
| 40 | On stone cover of Hydrant Chamber, opposite house No. 60 Catharine St. South, 210 feet south of Augusta St..... | 77 32 |
| 41 | On stone cover of Hydrant Chamber, near north west corner of Catharina and Catharine Sts....                    | 82.46 |
| 42 | On stone cover of stop valve Chamber, on Catharine St., and northerly limit of Catharina St...                  | 82.13 |
- 

### CATHCART STREET.

- |    |  |       |
|----|--|-------|
| 43 | On stone cover of Hydrant Chamber, west side of Cathcart St. near Cannon St.....                                 | 35.53 |
| 44 | On stone cover of Hydrant Chamber, opposite west limit of Cathcart Street, and south side of Rebecca Street..... | 44.04 |
| 45 | On stone step of south door of Clock Factory, Cathcart St., East side, South East corner of Kelly St.....        | 38.37 |
- 

### MARY STREET.

- |    |   |       |
|----|---|-------|
| 46 | On stone cover of Hydrant Chamber south east corner of Strachan and Mary Streets.....                             | 32.00 |
| 47 | On stone sill of window of Brick Store south west corner of Mary and Murray Sts., window faces Murray Street..... | 37.28 |
| 48 | On stone cover of Hydrant Chamber, west side of Mary St. 141 feet north of Robert Street...                       | 36.99 |
| 49 | On stone cover of Hydrant Chamber, west side of Mary St. 150 feet north of King Wm. Street                        | 54.83 |
| 50 | On stone Plinth of Building, north west corner of King and Mary Streets.....                                      | 65.31 |

F

5

5

5

5

5

5

5

5

6

6

## FERGUSON AVENUE AND CHERRY ST.

		Elevation in feet.
51	On cover of Hydrant Chamber, east side of Ferguson Avenue, about 170 feet south of McAuley Street.....	21.40
52	On stone coping of Sewer outlet Ferguson Avenue, just south of G. W. Railway.....	12.08
53	On stone cover of Hydrant Chamber, south side of Barton Street, 15 feet west of west limit of Ferguson Avenue.....	29.75
54	On stone cover of Hydrant Chamber, west side of Ferguson Avenue, 16 feet north of Robert Street.....	54.56
55	On front door sill of store north west corner of O'Reilly and Cherry Streets.....	75.40
56	On stone cover of Hydrant Chamber, corner of Hannah and Cherry Streets.....	95.90

---

 SPRING AND LIBERTY STS.,

57	On upper step of door of Frame Store, north west corner of Spring and Hunter Sts., (east side of step) door faces Hunter St.....	65.40
58	On door step of south door of Brick Store, facing Spring Street, corner of Spring and Main Sts..	57.75

---

 WELLINGTON STREET.

59	On window sill of Hat Factory, 1st window north from the corner, facing Wellington St.....	28.60
60	On stone cover of Hydrant Chamber, south side of Barton Street, 25 feet east of Wellington St	28.82
61	On lowest step of store No. 169, west side of Wellington Street, near Barton Street.....	31.72



- |    |   |       |
|----|---|-------|
| 62 | On stone cover of Hydrant Chamber, east side of Wellington St. 25 feet north of Cannon St...  | 36.78 |
| 63 | On stone door step of Brick Store or tavern, south west corner of Cannon and Wellington Streets, door faces Wellington Street . . . . . | 38.19 |
| 64 | On north door sill of house No. 60 east side of Wellington St., 40 feet north of Wilson Street.   | 42.13 |
| 65 | On Plinth of buttress of St. Thomas Church, the 2nd from west end of Church, and on north side of the building. . . . .                 | 60.31 |
| 66 | On stone cover of Hydrant, east side of Wellington St. 153 ft. north of Hunter Street. . . .  | 65.43 |

---

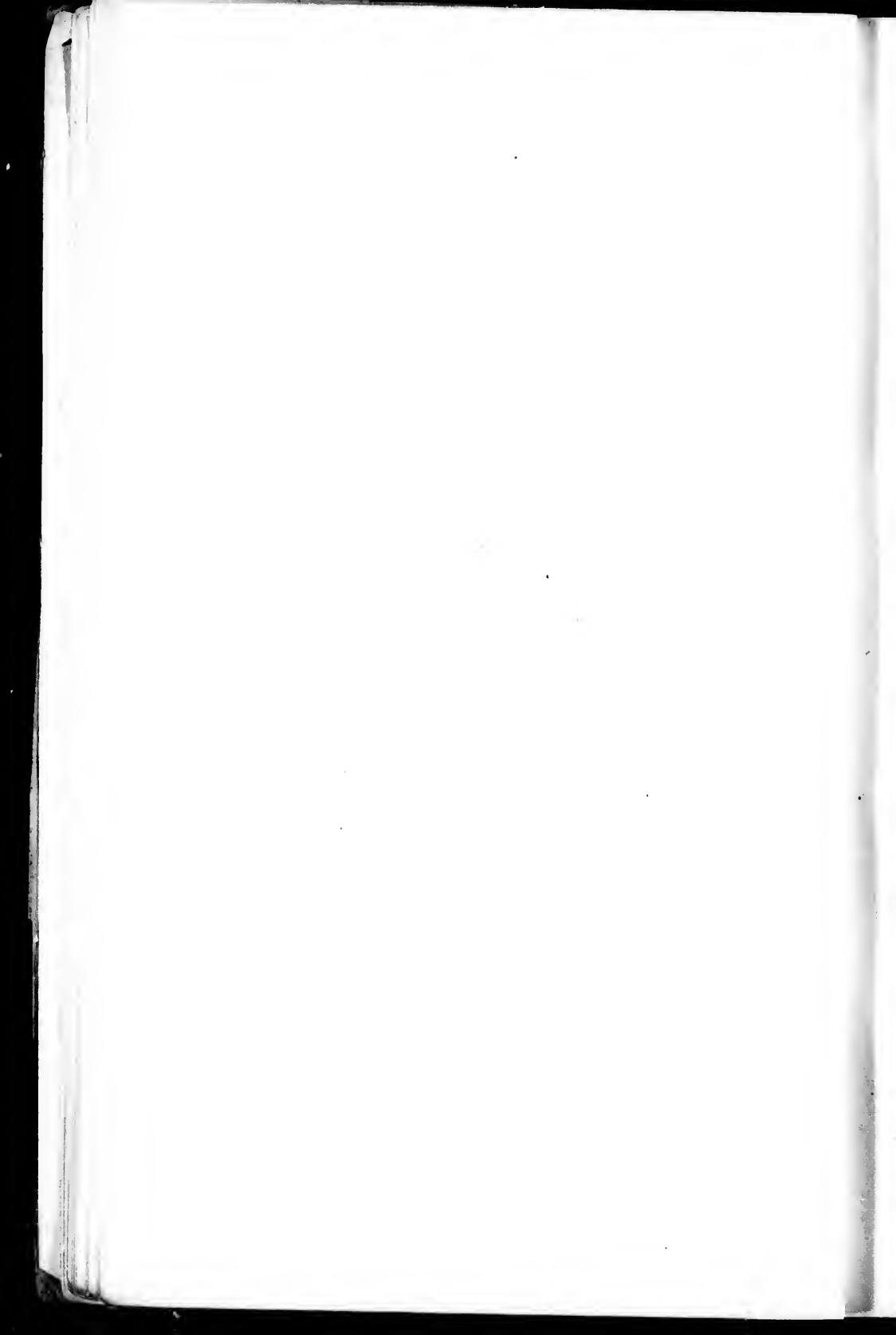
### EAST AVENUE.

- |    |   |       |
|----|---|-------|
| 67 | On wood sill of front door of frame house, south west corner of East Avenue and Robert Street                   | 33.20 |
| 68 | On stone cover of Hydrant Chamber, west side of East Avenue, 40 feet south of south limit of Wilson St. . . . . | 39.71 |
| 69 | On door sill of Brick store north west corner of King William St. and East Avenue. . . . .                      | 50.00 |
| 70 | On stone sill of door of Brick house, north west corner of Hunter St. and East Avenue. . . . .                  | 68.14 |

---

### EMERALD STREET.

- |    |   |       |
|----|---|-------|
| 71 | On front step of door of frame store, north east corner of Emerald and Cannon Sts. . . . .                | 42.70 |
| 72 | On Iron cover of Hydrant Chamber, west side of East Avenue about 200 feet south of Wilson Street. . . . . | 41.78 |





Elevation  
in feet.

- |    |  |       |
|----|--|-------|
| 73 | On front door step of brick Church, on east side of Emerald Street, between King and King William Streets, South, side of step, level with floor of church. .... | 48.99 |
| 74 | On stone door sill of Brick Cottage, North west corner of Emerald and Hunter Streets. ....   | 65.40 |
- 

### VICTORIA AVENUE

- |    |   |       |
|----|---|-------|
| 75 | On Iron cover of Hydrant Chamber, at north end of Victoria Avenue. ....   | 21.63 |
| 76 | On Iron cover of Hydrant Chamber, east side of Victoria Avenue and about 100 feet south of Ferrie Street. ....  | 24.35 |
| 77 | On door sill of first brick house, east side of Victoria Avenue and about 100 feet north of Robert Street. .... | 38.82 |
| 78 | On stone door sill of front door of brick store north west corner of Cannon Street and Victoria Avenue. ....    | 36.73 |
| 79 | On sill of front door of St Patrick Roman Catholic Church, at west entrance. ....                               | 53.38 |
| 80 | On sill of House, No 65 east side of Victoria   | 71.65 |
- 

### WENTWORTH STREET.

- |    |  |       |
|----|--|-------|
| 81 | On upper step of front door of house, about 300 feet south of North Western Railway, and near a Road in the Township of Barton. House is east side of street. .... | 24.75 |
| 82 | On stone step of front door of brick house, the southerly house of two semi detached, 150 feet south of G. W. Railway. ....  | 28.03 |
| 83 | On stone Boulder, south east angle of Wentworth and Barton Streets. ....   | 26.47 |



84	On top step of J. T. Gully's Frame grocery store, just outside City Limits and nearly opposite Nightingale Street . . . . .	41.58
85	On stone cover of Hydrant Chamber, at the south east corner of King and Wentworth Streets. . .	45.40
86	On plinth of post at south west corner of Went- worth and Stinson Streets . . . . .	77.70
87	On Top of stone, near the west limit of Went- worth and about six feet south of the south rail of the Hamilton and North Western Ry. . .	97.87

---

### PARK STREET.

88	On Plinth of Post opposite house 161 corner of Barton and Park . . . . .	59.81
89	On stone step of front door of brick store No. 75 south to corner of Cannon and Park Streets. . .	68.17
90	On corner of fence north east corner of Park and Merrick Streets. . . . .	72.68
91	On stone plinth course north east corner of Park and Market Streets. . . . .	74.50
92	On stone plinth of Brick house No. 9 east side of Park Street, (between 2 doors) about 200 feet south from King Street . . . . .	77.08
93	On door sill of House No. 41 east side of Park Street, 27 ft north of north limit of Jackson St	81.44
94	On Plinth of Central School out building, north west angle of Park and Bold Street . . . . .	115.97

---

### BAY STREET.

95	On stone cover of Hydrant Chamber, west side of Bay Street, 36 feet south of the south limit Stuart Street. . . . .	43.84
----	---	-------



		Elevation in feet.
96	On stone cover of Hydrant Chamber, opposite Colborne Street and on west side of Bay St.	64.39
97	On door step of front door of large Brick building, No. 140 west side of Street, 50 feet north of north limit of Sheaffe Street . . . . .	66.98
98	On Window sill of Grants Brewery, 3rd window north facing Bay Street . . . . .	71.53
99	On stone cover of Hydrant Chamber, opposite Brick house No. 75 west side of Bay Street, 146 feet north of north limit of Vine Street . .	70.97
100	On stone window sill of Copp's foundry, north west corner of Bay and York Sts., 1st window facing Bay Street . . . . .	75.43
101	On 3 door step of Kuntz brewery, front entrance on Bay Street . . . . .	78.49
102	On stone cover of Hydrant Chamber, corner of George and Bay Sts. 10 feet north of north limit of Bay . . . . .	80.20
103	On wood door sill, entrance to Engine House, east side of Bay between Jackson and Main Streets, (level with plinth) . . . . .	85.04
104	On stone cover of Hydrant Chamber, south west corner of Bay and Bold Sts. . . . .	113.13
105	On stone cover of Hydrant Chamber, west side of Bay Street opposite house 126, 10 feet north of south limit of Herkimer St . . . . .	122.19
106	On stop valve Chamber, near Bay on west side of Markland Street . . . . .	130.42

---

### CAROLINE STREET.

107	On door step of Brick house south west corner of Caroline and King Streets . . . . .	84.71
108	On stone sill of door of Grammer, School corner of King and Caroline, facing Caroline Street . . plane.	97.84



- 109** On stone cover of Hydrant Chamber, east side of Caroline Street, between Hunter and Jackson Streets, near centre of block..... **116.78**
- 110** On westerly angle of stone step of store, north east corner of Caroline and Bold Streets..... **109.12**
- 

### HESS STREET NORTH.

- 111** On plinth of brick store, north east corner of Hess and King Street..... **92.08**
- 112** On stone cover of Hydrant Chamber, near the corner of Bold and Hess Streets, 10 feet east of east limit of Hess Street..... **89.00**
- 113** On stone door of Brick house, north west corner of Hannah and Hess Streets..... **101.15**
- 114** On Iron cover of Hydrant Chamber, west side of Hess Street, about 120 feet north of north limit of Concession Street..... **113.68**
- 

### QUEEN STREET.

- 115** On lowest step of Ontario Rolling Mills, corner of Queen and Stuart Sts..... **11.48**
- 116** On stone cover of Hydrant Chamber, east side of Queen Street, about 100 ft. north of little Grey Street..... **71.98**
- 117** On plinth of post of Copp's gate, north west corner of York and Queen Sts..... **79.31**
- 118** On surveyors stone monument, north west corner of Queen and Concession Streets..... **113.96**

110

120

121

122

123

124

125

126

127

128

129

130



## LOCKE STREET.

		Elevation in feet.
119	On stone sill of front door of brick Store, north west corner of Lock and Robinson Streets . . .	85.95
120	On cover of Hydrant Chamber, west side of Locke and about 20 feet south of south limit of Duke Street . . . . .	78.66
121	On stone sill of front door of brick Store, south west corner of Locke and Main Streets . . . . .	80.52
122	On plinth of post, north east corner of Market and Locke Streets . . . . .	112.05
123	On stone work of Hydrant Chamber, west side of Locke Street, about 5 feet south of south limit of Peter Street . . . . .	114.10
124	On stone cover of Hydrant Chamber, 15 feet north of north limit of Florence, east side of Locke Street . . . . .	97.89
125	On sill of cellar window of House, No. 89 west side of Lock Street, about 177 feet south of south limit of York Street . . . . .	97.88
126	On stone cover of stop valve Chamber, corner of Lock and York Streets . . . . .	83.92
127	On stone cover of Hydrant Chamber, west side of Locke and about 75 feet south of Barton St	76.76

## PEARL STREET.

128	On stone cover of Hydrant Chamber, north west corner of Florence and Pearl Streets . . . . .	88.75
129	On sill of front door of school house, east side of Pearl Street, between Peter and Napier Sts.	102.97
130	On sill of door of Mount Zion Church, corner of Napier and Pearl Streets, side door facing Napier Street . . . . .	115.02

131

132

133

134

135

136

137

138

139

140

- |     |   |        |
|-----|---|--------|
| 131 | On sill of front door of store, north west corner<br>of King and Pearl Streets. ....  | 113.64 |
| 132 | On cover of Hydrant chamber, east side of Pearl<br>street, about 18 feet north of north limit of<br>Canada street . . . . . | 79.80  |

---

### RAY STREET.

- |     |  |        |
|-----|--|--------|
| 133 | On stone cover of Hydrant chamber, west side<br>of King street, 10 feet north of north limit of<br>Florence street. .... | 85.58  |
| 134 | On stone cover of Hydrant chamber, north side of<br>Napier, 14 feet west of west limit of Ray St. ....                   | 96.89  |
| 135 | On stone door sill of stone house, N. E. corner<br>of Ray and King Sts. ....   | 115.70 |

---

### DUNDURN STREET.

- |     |   |        |
|-----|---|--------|
| 136 | On stone cover of Hydrant chamber, near the<br>intersection of York and Dundurn streets. ....   | 112.54 |
| 137 | On stone sill of front door of Brick house, west<br>side of Dundurn street, 30 feet north of north<br>limit of Ardvorlich. ....   | 92.20  |
| 138 | On coping stone of old well, west side of<br>Dundurn street, and 30 feet south of south<br>limit of King street. ....   | 78.14  |
| 139 | On stone boulder, west side of Dundurn street<br>and south-west corner of a lot, whereon is a<br>white frame house, 115 feet south of south<br>limit of Herkimer street . . . . . | 81.00  |
| 140 | On stone boulder, a little north of north-east<br>corner of Concession and Garth streets. ....  | 100.33 |

I

I

I

I

I

I

## CONCESSION STREET.

(SOUTH CITY LIMIT.)

		Elevation in feet
I41	On highest stone step of 3, at the south-west corner of Concession and James.....	207.69
I42	On stone sill, of front door of Brick house, N. E. angle of Concession and Hilton streets.....	142.53
I43	On Root of Oak tree, south side of Concession street, and at extreme south-west angle of city, nail driven in the root.....	66.53

## BREADALBANE STREET.

I44	On door sill of Frame House, 85 feet south of south limit of Jones street east side of Breadalbane street.....	107.63
I45	On large stone, south side of Garth St., opposite Breadalbane street.....	77.68

## DEVONPORT STREET.

I46	On stone cover of Hydrant chamber, west side of Devonport street, 30 feet north of north limit of Tom street.....	107.64
-----	---	--------

## INCHBURY STREET.

I47	On stone cover of Hydrant chamber, west side of Inchbury street, and 40 feet north of north limit of Florence street.....	109.67
-----	---	--------

## CHARLES STREET.

I48	On Pedestal of Pillar of Porch, of house No. 20, corner of Charles and Main streets.....	80.02
I49	On Lowest step of House No. 59 Charles street, corner of Hunter and Charles streets.....	87.75

15

15

15

15

15

15

15

15

15

15

16

16

16

## KING STREET WEST.

		Elevation in feet.
150	On plinth of Hotel, called Mansion House, N. E. corner of King and Park streets.....	75.98
151	On top of surveyor's stone monument, south-west corner of King and Bay streets.....	79.74
152	On stone sill of front door of brick house, south-west corner of Caroline and King streets.....	84.63
153	On plinth of water table of Brick store, N. E. corner of Hess and King streets.....	92.08
154	On stone sill of door of Brick store, N. W. corner of King and Queen streets.....	107.01
155	On plinth of stone house, N. E. corner of Ray and King, (east side of door,) 20 feet east of east limit of King street.....	115.70
156	On sill of first window of Brick store, north-west corner of King and Pearl Sts. facing King St.	115.28
157	On plinth of Brick building, N. E. corner of King and Locke streets.....	105.56
158	On plinth of Hendrie & Co's office, near the corner of Macnab and King streets.....	73.30
159	On north-easterly wing of stone bridge, at north-east extremity of said wing on Dundas Road, near its intersection with Main street west....	10.43
160	On water table of Brick cottage, King street west, just opposite toll gate, (S. E. corner of cottage), at west limit of city.....	77.74

## KING STREET EAST.

161	On corner of base of large Fountain, King Street Gore, S. W. corner,.....	70.13
162	On Stone floor of Winer & Co.'s Building, south side of King, between James and Hughson Sts	69.72

I

I

10

10

16

16

16

170

171

172

173

174

175



		Elevation in feet.
163	On stone window sill of Basement of House, north west corner at West Avenue and King..	53.68
164	On stone cover of Hydrant Chamber, north side of King St., and near the west limit of Victoria Avenue, south east corner of stone.....	51.70
165	On Iron cover of Hydrant chamber, on King St near the east limit of East Avenue (S. W. angle of cover.....	50.75
166	On cover of Hydrant chamber, N. side of King street, between Tisdale and Emerald streets	45.59
167	On Iron cover of Hydrant chamber on King St. near Ashley, (S. W. corner of cover).....	46.57
168	On Iron cover of Hydrant chamber, north side of King and east of Ashley street.....	46.64

### YORK STREET.

169	On window sill of Copp's Foundry, N. W. corner of Bay and York streets, window faces York street, and is the first west from the main entrance to the show room.....	75.43
170	On stone cover of Hydrant chamber, south side of York street, between Bay and Caroline Sts. 195 feet from Caroline.....	73.42
171	On stone cover of Hydrant chamber, south side of York street, near Queen.....	76.71
172	On sill of window, of brick store, N. W. corner of Locke and King Sts.....	88.06
173	On eastern stone pier, Dundurn Park gate, York street.....	98.08
174	On stone cover of Hydrant chamber, near the intersection of Dundurn and York streets, and near the small house or lodge in Dundurn Park	112.54
175	On stone cover of stop-valve chamber, near the intersection of Dundurn and York Sts.....	114.50

I

I'

17

17

18

18

182

183

184

185

186

187

188

189

- |     |   |        |
|-----|---|--------|
| 176 | On step, of southerly door of Hotel, near the Burlington Cemetery, York street.....                                   | 111.97 |
| 177 | On plinth of post, of gate of Mr. Kent's house, (northerly one), and the northerly part of said gate, York street.... | 99.65  |
- 

### BARTON STREET.

- |     |   |       |
|-----|---|-------|
| 178 | On stone cover of Hydrant chamber, west side of Locke street, a little south of Barton.....   | 76.76 |
| 179 | On stone cover of Hydrant chamber, on Barton street, near Magill.....                         | 69.53 |
| 180 | On stone cover of Hydrant chamber, south side of Barton, on Locomotive street.....            | 65.87 |
| 181 | On stone cover of Hydrant chamber, south side of Barton, near Ferguson Avenue.....            | 29.75 |
| 182 | On window sill, at east end of Osborne's malt house, near H. & N. W. Railway, Barton St.      | 31.97 |
| 183 | On stone plinth of jail wall, north-east angle of Elgin and Barton streets.....               | 31.54 |
| 184 | On stone cover of Hydrant chamber, south side of street, opposite house No. 34, Barton street | 39.61 |
| 185 | On cover of Hydrant chamber, S. E. corner of Barton and Wellington streets.....               | 28.82 |
| 186 | On stone sill of cellar window, of east wing of Hospital, and west window of the wing... ..   | 35.38 |
| 187 | On cover of Hydrant chamber, east side of East Avenue, and near north limit of Barton street  | 33.10 |
| 188 | On sill of window, of House, 261, Barton street, nearly opposite Chisholm street, east window | 33.00 |
| 189 | On Surveyor's stone monument, S. E. angle of Barton and Wentworth streets... ..               | 26.45 |



Elevation  
in feet.

190	On top of Front Steps at Mountain View Hotel, opposite James Street Steps.....	382.48
-----	---	--------

