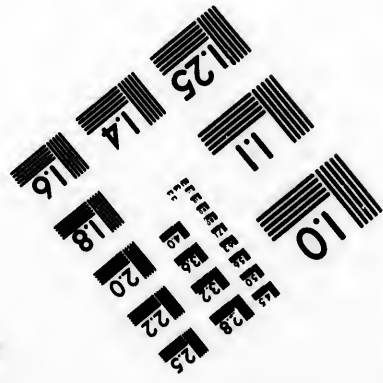
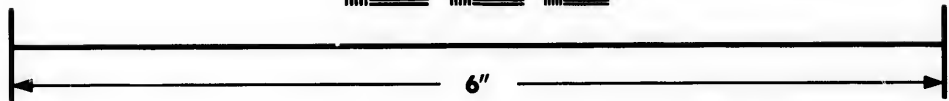
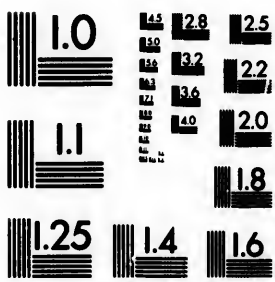


**IMAGE EVALUATION  
TEST TARGET (MT-3)**



**Photographic  
Sciences  
Corporation**

23 WEST MAIN STREET  
WEBSTER, N.Y. 14580  
(716) 872-4503

**CIHM/ICMH  
Microfiche  
Series.**

**CIHM/ICMH  
Collection de  
microfiches.**



**Canadian Institute for Historical Microreproductions / Institut canadien de microreproductions historiques**

**© 1982**

Technical and Bibliographic Notes/Notes techniques et bibliographiques

The Institute has attempted to obtain the best original copy available for filming. Features of this copy which may be bibliographically unique, which may alter any of the images in the reproduction, or which may significantly change the usual method of filming, are checked below.

L'Institut a microfilmé le meilleur exemplaire qu'il lui a été possible de se procurer. Les détails de cet exemplaire qui sont peut-être uniques du point de vue bibliographique, qui peuvent modifier une image reproduite, ou qui peuvent exiger une modification dans la méthode normale de filmage sont indiqués ci-dessous.

- Coloured covers/  
Couverture de couleur
- Covers damaged/  
Couverture endommagée
- Covers restored and/or laminated/  
Couverture restaurée et/ou pelliculée
- Cover title missing/  
Le titre de couverture manque
- Coloured maps/  
Cartes géographiques en couleur
- Coloured ink (i.e. other than blue or black)/  
Encre de couleur (i.e. autre que bleue ou noire)
- Coloured plates and/or illustrations/  
Planches et/ou illustrations en couleur
- Bound with other material/  
Relié avec d'autres documents
- Tight binding may cause shadows or distortion along interior margin/  
La reliure serrée peut causer de l'ombre ou de la distortion le long de la marge intérieure
- Blank leaves added during restoration may appear within the text. Whenever possible, these have been omitted from filming/  
Il se peut que certaines pages blanches ajoutées lors d'une restauration apparaissent dans le texte, mais, lorsque cela était possible, ces pages n'ont pas été filmées.
- Additional comments:  
Commentaires supplémentaires:

- Coloured pages/  
Pages de couleur
- Pages damaged/  
Pages endommagées
- Pages restored and/or laminated/  
Pages restaurées et/ou pelliculées
- Pages discoloured, stained or foxed/  
Pages décolorées, tachetées ou piquées
- Pages detached/  
Pages détachées
- Showthrough/  
Transparence
- Quality of print varies/  
Qualité inégale de l'impression
- Includes supplementary material/  
Comprend du matériel supplémentaire
- Only edition available/  
Seule édition disponible
- Pages wholly or partially obscured by errata slips, tissues, etc., have been refilmed to ensure the best possible image/  
Les pages totalement ou partiellement obscurcies par un feuillet d'errata, une pelure, etc., ont été filmées à nouveau de façon à obtenir la meilleure image possible.

This item is filmed at the reduction ratio checked below/  
Ce document est filmé au taux de réduction indiqué ci-dessous.

10X	14X	18X	22X	26X	30X
<input type="checkbox"/>	<input type="checkbox"/>	<input type="checkbox"/>	<input checked="" type="checkbox"/>	<input type="checkbox"/>	<input type="checkbox"/>
12X	16X	20X	24X	28X	32X

The copy filmed here has been reproduced thanks to the generosity of:

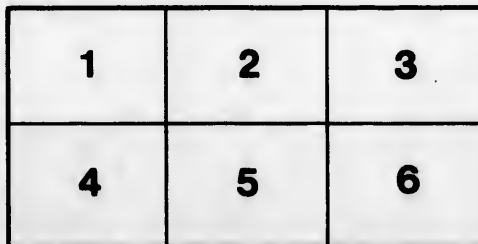
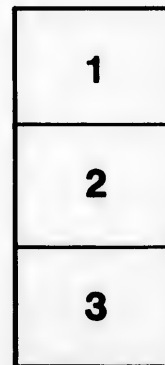
Library of the Public  
Archives of Canada

The images appearing here are the best quality possible considering the condition and legibility of the original copy and in keeping with the filming contract specifications.

Original copies in printed paper covers are filmed beginning with the front cover and ending on the last page with a printed or illustrated impression, or the back cover when appropriate. All other original copies are filmed beginning on the first page with a printed or illustrated impression, and ending on the last page with a printed or illustrated impression.

The last recorded frame on each microfiche shall contain the symbol  $\rightarrow$  (meaning "CONTINUED"), or the symbol  $\nabla$  (meaning "END"), whichever applies.

Maps, plates, charts, etc., may be filmed at different reduction ratios. Those too large to be entirely included in one exposure are filmed beginning in the upper left hand corner, left to right and top to bottom, as many frames as required. The following diagrams illustrate the method:



L'exemplaire filmé fut reproduit grâce à la générosité de:

La bibliothèque des Archives  
publiques du Canada

Les images suivantes ont été reproduites avec le plus grand soin, compte tenu de la condition et de la netteté de l'exemplaire filmé, et en conformité avec les conditions du contrat de filmage.

Les exemplaires originaux dont la couverture en papier est imprimée sont filmés en commençant par le premier plat et en terminant soit par la dernière page qui comporte une empreinte d'impression ou d'illustration, soit par le second plat, selon le cas. Tous les autres exemplaires originaux sont filmés en commençant par la première page qui comporte une empreinte d'impression ou d'illustration et en terminant par la dernière page qui comporte une telle empreinte.

Un des symboles suivants apparaîtra sur la dernière image de chaque microfiche, selon le cas: le symbole  $\rightarrow$  signifie "A SUIVRE", le symbole  $\nabla$  signifie "FIN".

Les cartes, planches, tableaux, etc., peuvent être filmés à des taux de réduction différents. Lorsque le document est trop grand pour être reproduit en un seul cliché, il est filmé à partir de l'angle supérieur gauche, de gauche à droite, et de haut en bas, en prenant le nombre d'images nécessaire. Les diagrammes suivants illustrent la méthode.

ire  
détails  
es du  
modifier  
er une  
filmage

ées

re

y errata  
ed to

nt  
ne pelure,  
çon à





MEMORIAL

OF THE

Governors, Principal, and Fellows

OF

McGILL COLLEGE AND UNIVERSITY.

---

Presented to His Excellency the Governor General, and to  
the Legislature, February, 1865.

---

Montreal :  
JOHN LOVELL, PRINTER, ST. NICHOLAS STREET.  
1865.

To

The

RES

T  
of t  
and  
pern  
follo

I  
its r  
frien  
pers  
Tea  
der  
6 P  
of A  
The  
Me

I  
but  
ality  
grea  
Mo  
in r

*To His Excellency the Right Honorable CHARLES STANLEY  
VISCOUNT MONCK, Baron Monck of Ballytrammion in the  
County of Wexford, Governor General of British North  
America, and Captain General and Governor in Chief in  
and over the Provinces of Canada, Nova Scotia, New Brun-  
swick, and the Island of Prince Edward, and Vice-Admiral  
of the same, etc., etc., etc.*

The Petition of the Governors, Principal and Fellows, of McGill  
College and University—

RESPECTFULLY SHEWETH :—

That your Excellency's Petitioners, in view of the present condition of the University and its limited resources, feel themselves justified and called upon earnestly to press upon the Legislature its claims for a permanent endowment, in support of which they beg leave to make the following statements :

In an educational point of view, the growth of the University under its new charter, has surpassed the most sanguine expectations of its friends. It was in the past session instrumental in the education of 928 persons, of whom 305 were Students in Law, Medicine and Arts ; 74 Teachers in training ; 249 pupils in the High School, and the remainder were pupils in the Model Schools. It has in the Faculty of Law 6 Professors ; in the Faculty of Medicine, 9 Professors ; in the Faculty of Arts, 10 Professors ; in the High School Department 10 Masters. There are also two Professors, two Teachers and several assistants, in the McGill Normal and Model Schools.

In its buildings, the University was long inadequately accommodated ; but recently by the exertions of the Board of Governors, and the liberality of one of them, Wm. Molson, Esq., this disadvantage has been in a great measure removed. By the liberality of some leading citizens of Montreal, it has recently been endowed with gold Medals in Law, and in most of the principal branches of Study in Arts.



The University now challenges comparison with any other in North America, in the efficiency of its staff and the thoroughness of its courses of study, and is prepared to carry the scientific and literary education of young men to a degree of perfection not heretofore attainable in Lower Canada, and comparable with that of the British Universities.

While these results, so creditable and useful to Canada, have been attained, your Excellency's Petitioners have, from the first, had to complain that the important objects committed to their care, have not received an adequate amount of Provincial pecuniary support, and that their labours have, in consequence, been prosecuted under many disadvantages.

The total expenditure of the University for the past year, including \$588 of interest on its debts, and \$2018 for repairs, &c. of building (but exclusive of the Normal School and of Fees paid to Professors in Medicine and Law), may be stated at \$31,411; and that an institution of this character, with so many instructing officers, should be supported on such a sum, must be regarded as an instance of economy scarcely equalled in any other similar case.

Of the above sum, \$6,702 are paid by the revenue of the original endowment of Mr. McGill; \$2,846 by the interest of the Endowment Fund contributed by the citizens of Montreal; \$6,019 by the fees in the High School, and \$713 by the fees in the Faculty of Arts. Toward payment of the balance the Province contributes as follows :

(1.) A sum of \$1,000 per annum to the Medical Faculty, being the same amount paid to each of the other Medical Schools, none of which equals that of McGill in the number of Professors and Students.

(2.) The sum of \$1,128 to the High School Department, on condition that it shall educate, free of expense, thirty pupils appointed by the Government, and whose education at the annual rate of fees would cost \$1,320; the High School being distinguished from every other Superior School in Lower Canada by receiving no free grant.

(3.) The sum of \$2,803.97 to the College, in aid of the University generally, and of the Faculties of Arts and Law. The sum thus granted has been progressively diminished from 1854 up to the present time, as stated in the following table, though in the meantime the number of students at the University and its annual expenditure for their benefit have largely increased.

NUM  
ST  
Y  
S  
in A  
in M  
in L  
Total  
Pupil  
Sch  
Total  
Grant  
Un  
Grant  
Med  
Sch  
Grant  
High  
for  
tin  
Sch  
A  
School  
suppo  
T  
rema  
defic  
of w  
cont  
also  
incr  
Mus  
It  
addi  
ther  
Y  
the  
ditu  
to t

NUMBER OF STUDENTS AND PUPILS OF MCGILL COLLEGE AND UNIVERSITY, FROM 1854 TO 1863, WITH THE ANNUAL GRANTS FOR THE SAME YEARS.

STUDENTS.	1854	1855	1856	1857	1858	1859	1860	1861	1862	1863
In Arts,.....		38	42	47	47	60	58	65	72	82*
In Medicine, ..		57	96	90	97	108	124	140	175	177
In Law,.....		15	16	30	30	37	47	46	55	48
Total Students	97	110	154	167	174	205	229	256	302	307
Pupils in H. } School. .... }	185	215	225	242	250	252	281	271	262	249
Total.....	282	325	379	409	424	457	510	527	564	556
Grants to the } University. } Grants to the } Medical } School. } Grants to the } High Sch. } for Educa- } ting 30 free } Scholars... }	\$ 7000	\$ 4167.77	\$ 3071.06	\$ 3001.07	\$ 2932.82	\$ 2932.82	\$ 2862.28	\$ 2932.82	\$ 2862.28	\$ 2903.97
	1000	1000.00	1000.00	1000.00	1000.00	1000.00	1000.00	1000.00	1000.00	1000.00
	1128	1128	1128	1128	1128	1128	1128	1128	1128	1128

\* Including 15 Students of Morrin College.

Note.—74 Teachers in training in the Normal School, and 300 Pupils in the Model Schools are excluded from the above table, these institutions not deriving any pecuniary support from the College.

Taking into account all these sources of revenue, an annual deficiency remained in 1863, of \$10,141, not provided for by the income; and this deficiency appeared so alarming that the Governors were under the necessity of withdrawing the aids formerly given to the High School, and of discontinuing the course of Engineering in the Faculty of Arts. They were also obliged further to postpone the just claims of several Professors for increase of their salaries, and to abstain from all additions to the Library, Museum, and Apparatus.

It should also be stated that the extension of the University renders additional expenditure necessary for examinations and printing, which there are not means to defray.

Your Excellency's Petitioners would further state that an inspection of the accounts will show that the utmost economy has pervaded the expenditures of the University, and that its efforts have been steadily directed to the provision of means of education not otherwise accessible in this

country, and of a higher character than those afforded by the ordinary Academies and Colleges; thus fulfilling the wise and benevolent intentions of the founder, and giving to our young men the opportunity of raising their mental culture to the level of that in older countries. It has further been an object of solicitude with the Governors to promote practical scientific training bearing on the more important professions, and they would gladly do more in this direction did their resources permit.

The following statements, contained in a former memorial, may be here repeated, as enforcing the claims of the University to public aid.

*First*:—The late Mr. McGill undoubtedly made his bequest under the expectation and implied promise that a further and sufficient endowment would be made by the Provincial Government. This is apparent from the circumstances under which the bequest was made. The Governor in Chief in 1801 laid before the Provincial Parliament a message in the following terms:

“That His Majesty had been graciously pleased to give directions for the establishment of a competent number of Free Schools, for the instruction of children in the first rudiments of useful learning, and in the English tongue, and for foundations of a more enlarged and comprehensive nature, and that His Majesty had been further pleased to signify His Royal intention that a suitable proportion of the lands of the Crown should be set apart, and the revenues thereof appropriated to such purposes.” As a preliminary step, the Act incorporating the Royal Institution for the Advancement of Learning was passed, containing this message in its preamble; and thereafter, it was intended that the “liberal grant of Crown Lands,” referred to in the message, should be transferred to its control, in trust for Free Schools and “Foundations of a more enlarged and comprehensive nature,”—but no grant was ever made.

The late Mr. McGill was not only an active Member of the Legislature at this time, but an Executive Councillor, and therefore, must be presumed to have been thoroughly conversant with the intentions of the Imperial and Provincial Governments. By his last will he bequeathed a sum of money and his Estate of Burnside to the Royal Institution for the purpose of erecting and maintaining a University; but his endowment, liberal as it was, was yet quite inadequate for the object

cont  
the F  
Land

Hi  
testa  
that  
been  
tutio  
have  
of pu  
endow  
from  
addit  
necte  
estab  
and  
£55,  
tinue  
Colle  
raise  
no p  
lege  
the f  
annu  
value

TH  
fund  
the  
Mr.  
tify  
man  
by p  
now  
men  
tant  
by t

contemplated, and it is reasonable to infer that he looked beyond it to the Royal Institution, to whom he believed that a liberal Grant of Crown Lands was to have been entrusted for a kindred purpose.

His Endowment was long anterior to the establishment of any Protestant College in the Province, and still is the only one made in it for that purpose. Since that time hundreds of thousands of pounds have been bestowed by annual grants on Roman Catholic Educational Institutions in Lower Canada; while, in Upper Canada, several Universities have been founded, all of them participating more or less in the grants of public moneys. One of them, the University of Toronto, enjoys an endowment of 226,201 acres of land conferred by Royal Grant in 1828, from which a sum exceeding £293,883 has been already derived, and in addition to this, it received during many years for the College connected with it, a grant of \$1,111 annually. Upper Canada College, established in 1832, was endowed by various grants between that year and the year 1835, with 63,805 acres of land, which has yielded £55,434, and has also received an annual grant of £1000, which still continues. It is further to be observed that the Universities of Queen's College and Victoria College, in Upper Canada, have had their grants raised to \$5000 each, beside the usual aid to their Medical Schools. Yet no permanent provision whatever has ever been made for McGill College; and all the moneys received by it from public sources (of which the first was in 1854) do not together amount to one-fourth of the annual revenues of the University of Toronto, or to one-tenth of the value of Mr. McGill's bequest.

The largeness of that bequest and the munificence with which the fund has since been increased in the sum of £15,000 by subscription in the City of Montreal, and the completion of the College buildings by Mr. William Molson, coupled with the character of the University, justify your Memorialists in the hope that a corresponding spirit will be manifested by the Legislature, and that after so much has been done by private beneficence, the work may be completed by granting the relief now sought, and providing for the future a permanent public Endowment. These donations also show how urgently the want of a Protestant University has been felt, and how highly its benefits are esteemed by the English population:

*Secondly* :—Not only was the late Mr. McGill warranted in believing that his exertions to establish a University would be supported by a Grant from the Crown Lands, but the Members of the Royal Institution, subsequently, were led to expect that they would have been saved the heavy expense of erecting the College buildings, and that the endowment would have been rendered available for its future support. In the early part of 1819, the Lord Bathurst, then Colonial Secretary, instructed the Governor General, the Duke of Richmond, to adopt, with as little delay as possible, the necessary measures for erecting upon Mr. McGill's property an adequate building for the instruction of youth, and His Grace was authorized to defray the expense thereof from the funds which might be in the hands of the Receiver of the Jesuits' Estates.

But for reasons unknown to the Governors, these liberal intentions on the part of His Majesty were not carried into effect.

*Thirdly* :—The University of McGill College is the only one in Lower Canada which is non-sectarian. As such it is entitled to claim, and as your Excellency's Petitioners believe, it possesses, the confidence of the Protestant community of every religious denomination. This is shown by the list of subscriptions to the Endowment Fund, in which are to be found the names of Members of the English and Scotch Churches and of the Free Church, Methodists, Congregationalists, American Presbyterians, and Unitarians; Members of the Jewish faith have also contributed.

*Fourthly* :—The University is not a mere private Institution founded by individual benevolence, but is public and provincial in its character. It is prepared to confer degrees not only upon the Students of its own Colleges, but, under just and salutary rules, upon those of any others which may be established in the Province,—thus rendering it unnecessary, as without doubt it is inexpedient, to multiply the number of Educational Institutions possessing that power.

A large number of scholarships in the Faculty of Arts are at the disposal of your Excellency, as also the presentation to thirty scholarships in the High School Department.

*Fifthly* :—This Provincial character of the University, and the prosperity and influence which it has attained, mark it out as the great centre and support of the higher Protestant Education in Lower Canada. As

such, the management of the Provincial Normal School has been confided to it with the approbation of the whole community; and the confidence has thus far been justified by complete success. A further indication of the same nature is afforded by the affiliation with it of the St. Francis College, Richmond, under the liberal terms provided by the Statutes of the University. Still more recently Morrin College, Quebec, has been affiliated, and has already sent up eleven students who have passed creditably the preliminary examinations of the University; and arrangements are now in progress for affiliating the Congregational College of British North America.

The affiliation of other Colleges and Theological Schools is expected; and thus the aids to higher education, which this country so much needs, will always be available to all who may require them, and that in the amplest form; for it is to be observed that this University offers to its students not only an ordinary liberal education, but the means also of high scientific culture, and of thorough instruction in the professions of Law and Medicine, and that its present position in this respect will enable it, with additional pecuniary resources, to extend itself still further in the direction of professional education.

The importance and claims for support of such a Central Institution are too obvious to require argument; and these, great as they now are, will be augmented by the increase of population, wealth, and intelligence, bringing with them an appreciation of the value of learning and a demand for the means of its general cultivation. The McGill University ought not then to be confounded with the ordinary Schools and other Educational Establishments, sectarian or non-sectarian, which abound in Lower Canada. It stands alone in its character and objects, and requires from the Government a direct and special support adequate to its importance and its wants. To place it, in the distribution of Legislative aid, upon the same footing with those minor establishments which share in the fund placed in the hands of the Superintendent of Education, is an error and an injustice, not only to the University itself, but to the whole Protestant community of Lower Canada. Your Excellency's Petitioners would further, in view of the proposed Federation of the Provinces, urge the necessity of an immediate consideration of the claims above set forth, and of a permanent provision for the support of the University.

Your Excellency's Petitioners would therefore pray for a permanent endowment, and that this should be equal to an annual income of \$20,000 for the College and University, and of \$4000 for the High School, independently of any sum the latter may receive for the education of Government scholars.

And your Excellency's Petitioners, as in duty bound, will ever pray.

permanent  
of \$20,000  
gh School,  
ducation of

ever pray.



