

Technical and Bibliographic Notes / Notes techniques et bibliographiques

The Institute has attempted to obtain the best original copy available for filming. Features of this copy which may be bibliographically unique, which may alter any of the images in the reproduction, or which may significantly change the usual method of filming, are checked below.

L'Institut a microfilmé le meilleur exemplaire qu'il lui a été possible de se procurer. Les détails de cet exemplaire qui sont peut-être uniques du point de vue bibliographique, qui peuvent modifier une image reproduite, ou qui peuvent exiger une modification dans la méthode normale de filmage sont indiqués ci-dessous.

Coloured covers/
Couverture de couleur

Covers damaged/
Couverture endommagée

Covers restored and/or laminated/
Couverture restaurée et/ou pelliculée

Cover title missing/
Le titre de couverture manque

Coloured maps/
Cartes géographiques en couleur

Coloured ink (i.e. other than blue or black)/
Encre de couleur (i.e. autre que bleue ou noire)

Coloured plates and/or illustrations/
Planches et/ou illustrations en couleur

Bound with other material/
Relié avec d'autres documents

Tight binding may cause shadows or distortion along interior margin/
La reliure serrée peut causer de l'ombre ou de la distorsion le long de la marge intérieure

Blank leaves added during restoration may appear within the text. Whenever possible, these have been omitted from filming/
Il se peut que certaines pages blanches ajoutées lors d'une restauration apparaissent dans le texte, mais, lorsque cela était possible, ces pages n'ont pas été filmées.

Additional comments:
Commentaires supplémentaires:

Coloured pages/
Pages de couleur

Pages damaged/
Pages endommagées

Pages restored and/or laminated/
Pages restaurées et/ou pelliculées

Pages discoloured, stained or foxed/
Pages décolorées, tachetées ou piquées

Pages detached/
Pages détachées

Showthrough/
Transparence

Quality of print varies/
Qualité inégale de l'impression

Continuous pagination/
Pagination continue

Includes index(es)/
Comprend un (des) index

Title on header taken from:
Le titre de l'en-tête provient:

Title page of issue/
Page de titre de la livraison

Caption of issue/
Titre de départ de la livraison

Masthead/
Générique (périodiques) de la livraison

This item is filmed at the reduction ratio checked below/
Ce document est filmé au taux de réduction indiqué ci-dessous.

10X	12X	14X	16X	18X	20X	22X	24X	26X	28X	30X	32X
									✓		

J. H. ASHDOWN
WINNIPEG

Myers Pumps
Geneva Harvest Tools
Savage Rifles
Loaded Shells
Ball-bearing Wringers
English Iron
Bed-Steads

FOR THE NEWEST IDEAS IN

CLOTHING

SEE OUR SAMPLES

DONALD FRASER & CO., MANUFACTURERS

WINNIPEG

MONTREAL

Give Us
A Trial Order

We are confident we can give you satisfaction. Prices right and careful selection.

Georgia Watermelons arriving in car lots, very choice. Our stock of Oranges is the best the market can supply. Peaches and Plums at close prices.

BRIGHT & JOHNSTON

Winnipeg

—DEALER IN—

Green Fruits, Dried Fruits, Nuts, Honey, Cider, Maple Sugar and Syrup, Green Vegetables, etc.



JOHN W. PECK & CO.

MANUFACTURERS OF

CLOTHING,
FUR GOODS,
SHIRTS

Dealers in Men's Furnishings, Hats and Caps.

We would draw especial attention to the fact that we have the only stock now in existence of good Buffalo Coats.

Assorting orders by letter for goods in ones will receive prompt and careful attention.

MONTREAL WINNIPEG

Druggists

and others will please note that we have just received a large consignment of the following lines for Spring and Summer Trade.

Pure Lime Juice

In Bulk, Pints and Quarts.

Little's Antipest Insecticide

For Trees, Leaves and Gardens.

Sheep Dip

Cooper's Dry. Little's Dry and Liquid.
Please write for prices.

The Martin, Bole & Wynne Co.

Wholesale Druggists, Winnipeg
P.O. Box 1464

MANITOBA'S NEW INDUSTRY

Ed. Guilbault

Tin Box Manufacturer

I manufacture, stamp and lithograph all descriptions of Tin Boxes, Butter Cans, Lard Pails, Baking Powder, Tea, Coffee and Spice Cans, etc. Special quotations to large Fish Canneries, Tea Packers, etc.

WRITE OR CALL FOR QUOTATIONS TO

ED. GUILBAULT

ST. BONIFACE MANITOBA

EXHIBITION WEEK

TO THE TRADE

We will have our stock of XMAS FANCY GOODS, DOLLS, TOYS, BOOKS, and GENERAL SUNDRIES, which far exceeds any previous line, displayed during the week, and shall be pleased to have buyers fully inspect it before ordering.

LOVE, McALLISTER & CO

173 McDERMOTT AVENUE

Behind the Post Office

WINNIPEG

If you want BEST GOODS
at lowest prices

.. USE ..

Stephens'
PURE
READY
MIXED **PAINT**

Manufactured by

C. F. STEPHENS & CO

Market Street, WINNIPEG.

The Western Loan & Trust Co.

LIMITED

Incorporated by Special Act of the Legislature.

Authorized Capital, - \$2,250,000.00

Subscribed Capital, - \$2,201,200.00

Office, 13 St. Sacrament St., Montreal, Que.

DIRECTORS

Hon. A. W. Ogilvie Wm. Strachan, Esq.
W. Barclay Stephens, Esq. H. F. Fontaine, Esq., M. P.
R. W. Knight, Esq. John Hoodless, Esq.
J. N. Greenfield, Esq., Q. C. W. L. Hogg, Esq.

OFFICERS

Hon. A. W. Ogilvie, Pres. Wm. Strachan, Esq. Vice-Pres.
J. W. Michand, Esq., Accountant W. Barclay Stephens, Esq., Mgr
Solicitor—Messrs. Greenfield & Greenfield.
Bankers—The Merchants Bank of Canada.

This Company acts as assignee, administrator, executor, trustee, receiver, committee of Insane, guardian liquidator, etc. etc., also as agent for the above offices.

Debentures issued for three or five years, both debentures and interest on the same can be collected in any part of Canada without charge.

For further particulars address the manager

CROTTY & CROSS, AGENTS, WINNIPEG

THE COMMERCIAL

A Journal of Commerce, Industry, Finance and Insurance, devoted to the interests of Western Canada, including that portion of Ontario west of Lake Superior, the Province of Manitoba and British Columbia and the Territories.

Sixteenth Year of Publication

ISSUED EVERY SATURDAY

SUBSCRIPTIONS, CANADA AND UNITED STATES, \$2.00 PER ANNUM IN ADVANCE OR \$2.25 WHEN NOT SO PAID; OTHER COUNTRIES, \$2.50 PER ANNUM IN ADVANCE.

Changes for advertisements should be in not later than Thursday Morning.

Advertisements purporting to be news matter, or which profess to express the opinions of this Journal, will not be inserted.

Office: 151 McDermot Street.

D. W. BUCHANAN,
Publisher.

The Commercial certainly enjoys a very much larger circulation among the business community of the vast region lying between Lake Superior and the Pacific Coast, than any other paper in Canada, daily or weekly. The Commercial also reaches the leading wholesale, commission, manufacturing and financial houses of Eastern Canada.

WINNIPEG, JULY 23, 1898.

NEW PREFERENTIAL TARIFF.

Last week The Commercial referred at some length to the Canadian preferential tariff, explaining the present position of the tariff. One point which would no doubt strike the reader of the article referred to, would be in regard to the difficulty which will inevitably be experienced in successfully enforcing the full provisions of the tariff. To secure the preference, the goods must be the "growth, produce or manufacture" of the favored countries. Manufactured articles, presumably made from foreign raw material, "must have labor expended on them in the country enjoying the preference, equal to one-quarter of their value."

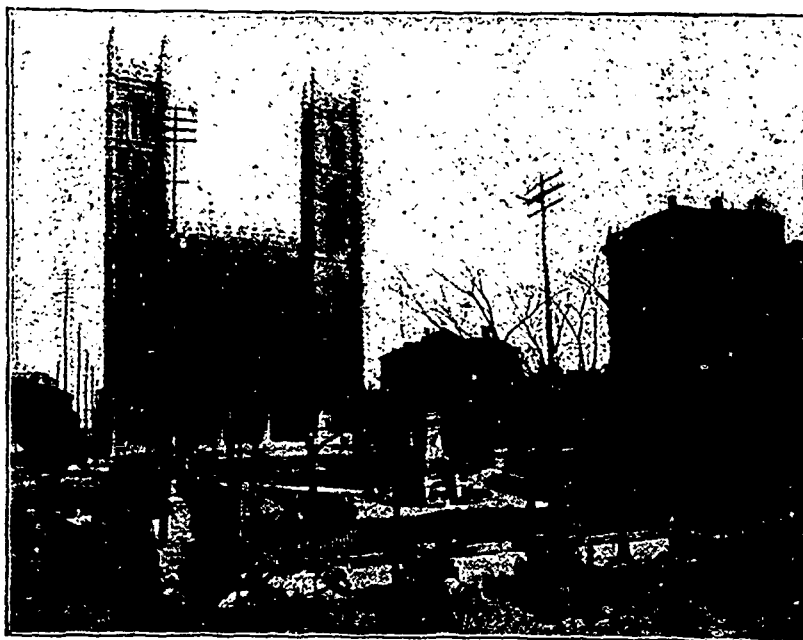
Just here it appears a very difficult matter crops up. It will be by no means an easy matter to decide what goods are and what are not entitled to the preference. Exporters will be required to make separate invoices for goods entitled to the preferential tariff, accompanied by a certificate declaring that the goods are of British or colonial origin, or if of foreign origin, that they have been further manufactured in the favored country to the extent of one-quarter of their value. If all exporters were thoroughly honest, there would not be much trouble with this provision; but

it may be taken for granted that there will be frequent attempts to evade the regulations of the tariff, and it would seem to be an easy matter to perpetrate frauds under this preferential tariff. Some manufactured goods might be made from either British or foreign material and it would be impossible to tell the difference between them. Again, it will often be a difficult matter to decide whether or not one-quarter of the value of the goods represents British labor. The customs department will have to get matters down very fine to decide this point in many cases. Still, again, enormous quantities of foreign goods, similar in style to British goods, are handled by British exporters. What is to prevent the export of these goods to Canada as British manufactures? especially as the exporter will not be subject to

number of French, Scandinavians, etc., a very mixed population to be sure. Sugar growing is the principal industry, and enormous fortunes have been made by a few speculators in this business. In fact the manoeuvres to get the islands annexed are said to have been engineered by the sugar kings, as it would give them a preferential market in the United States for their product. The exports of the island for the last recorded year were \$15,500,000 and the imports about half that amount. Honolulu, the capital of the islands, is distant from San Francisco 2,100 miles.

ENCLOSURES.

Complaint has several times reached The Commercial regarding the objections often made in some Winnipeg wholesale warehouses against enclos-



PLACE D'ARMES SQUARE, MONTREAL.
Showing Notre Dame Cathedral and New York Life Building.

penalty for sending false invoices. It certainly looks as though the customs department will have a difficult case in hand in strictly enforcing all the features of the preferential tariff.

HAWAII.

The Hawaiian Islands, recently annexed to the United States, cover some 7,006 square miles of territory, or about equal to the state of Massachusetts. All the islands are mountainous. The group extends east and west about 1,200 miles, but the principal islands extend only about 300 miles. The climate is fine. The population in 1896 was only 109,020, of whom 31,000 were natives, 21,500 Japanese, 15,200 Portuguese, 21,616 Chinese, 8,500 of mixed native blood, 3,000 United States citizens, 2,250 British, 1,400 German, and a small

ing parcels from other houses, in making up shipments to customers. Frequently merchants in the country, when ordering small parcels of goods from two or three houses, will ask to have the goods sent to one warehouse for enclosure in one package. Shippers in some of the warehouses, however, object to make these enclosures. Possibly the objection to making enclosures often comes from the shipping department alone, and not from principals. It is not the jobber alone who is accommodated by the acceptance by another jobber of parcels for enclosure. The customer of each jobber is the principal beneficiary, and it is usually at the request of the customer that the privilege of an enclosure is asked for. Those who object to accepting parcels for enclosure, should look at the

TELEPHONE 34

P.O. BOX 693

STUART & HARPER

758, 760, 762 MAIN STREET, WINNIPEG

Dealers in Machinery and Supplies

Boilers, Engines and Steam Pumps, Hoisting Engines and Centrifugal Pumps. Agents for Monarch Economic Boilers. Latest improved Flour Mill Machinery, Woodworking Machinery and Saw Mills, Ironworking Machinery and Tools, Dodge Wood Split Pulleys and Friction Clutches, Dodge system of Manilla Rope Drives, Electric Dynamos and Motors, Electrical Supplies and Incandescent Lamps, Electrical Repairs.

Large Stock of Second-hand Machinery on Hand

Call and see us or write for prices on any Machinery you are in need of.

G. F. & J. GALT**Wholesale Grocers**

PACKERS OF

"BLUE RIBBON" and "UNION JACK" Packet Teas.

Rat Portage Lumber Co.

LIMITED

**SASH, DOORS
MOULDINGS, ETC.**

OFFICE AND WAREHOUSE:

POINT DOUGLAS AVENUE

WINNIPEG, MAN.

CORRESPONDENCE SOLICITED

J. C. GRAHAM, MANAGER WINNIPEG BRANCH

ACETYLENE GAS

CARBIDE OF CALCIUM

NAPHEY ACETYLENE GAS BURNERS IN STOCK.

The only Burner adapted to use with this gas.

R. A. WYLLIE, Western Agt., Western Canada Block., Winnipeg, Man.

100 lb. tins, \$4.50
Write for Prices
Large Quantities

HOTEL LELAND

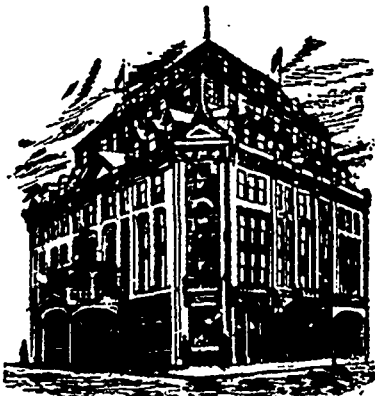
THE PALACE FAMILY AND
COMMERCIAL HOTEL

Rates, \$2.00 to \$4.00 a Day

Second to nothing in Canada.

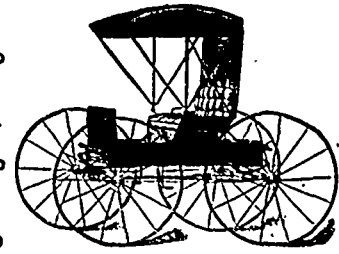
W. D. DOUGLAS, Manager.

City Hall Square, Winnipeg.

**A. C. McRAE**

—DEALER IN—

CARRIAGES, WAGONS



HARNESS, ROBES

Manufacturer of Carriage Tops and Trimmings. The trade supplied in any quantities. It will save you money to consult us before placing your orders. OFFICE AND WAREHOUSE

Cor. King and James Streets, WINNIPEG

PATRONIZE HOME INDUSTRY.

**GRETNA
TOW MILLS**

Furniture men why buy eastern Tow when you can purchase good Tow manufactured in Manitoba and made from the product of Manitoba. Save money and have a cheaper article.

All letter orders promptly attended to. Address

J. G. KERTCHER,

Lock Box 4

Gretna, Man.

The Whitlam Shoe Co., Ltd.

MANUFACTURERS OF
FINE

FOOTWEAR

43, 45, 47 ST. MAURICE STREET

MONTREAL

McINTYRE SON & CO.

MONTREAL

Beg to advise their numerous Customers and others that as soon as the NEW CREATIONS for FALL TRADE are obtainable, their representative will wait on them with samples of same, and as usual, can assume SEASONABLE delivery of all orders.

SPECIALTIES

Dress Goods, Silks, Linens
Kid Gloves (Trefousse, Posters
Rouillon)
Laces, Embroideries, Etc.

Northwestern Agent, J. M. MACDONALD
Bank of Ottawa Building, Winnipeg, Man.

matter in this light, and accept the enclosure for the benefit it will be to their customers.

There is another way of looking at the matter. By freely accepting enclosures, jobbers are not only accommodating their customers, but they are also benefitting the trade of the city. This is one of the ways in which jobbers can work together for their mutual good. Anything which will make it more pleasant for outside merchants to do business here; which will be an accommodation or a benefit to those who do their buying here, will be a benefit to the jobbing trade of the city in general. We are informed by a party who is familiar with the jobbing trade in Toronto, that parcels for enclosure are freely accepted there. We believe it would be in the interest of the jobbing trade of Winnipeg to have an understanding upon this matter.

Business at Vancouver.

Vancouver, July 18.

The Australian steamship Warrimoo brought in a large consignment of canned meats which will for a short season take the place of United States goods as they are cheaper than the article which comes to us from the States and just as good. The market is flooded with fresh fruits, which are selling in some instances at sacrifice prices. Several cases of passion fruit have arrived from Australia and have met with ready sale. This is the initial shipment of passion fruit to Vancouver. Pineapples have arrived and are quoted at from \$2 to \$2.75 per dozen. Trade is very brisk with provision merchants. The supplies secured for the Klondike trade are giving out and they are working night and day shifts to supply the demand for lumber and mining camps. Sugar has made a fractional decline.

A serious failure reported this week is the British Columbia Iron Works of Vancouver. They were working night and day shifts for the past eighteen months and it was an institution that Vancouver pointed to with pride as one of her big paying concerns. When the suspension of the concern was announced it fell like a bomb shell in the business world. Thirty families are affected and most of them will be obliged to move elsewhere. It is said the failure was due to several heavy contracts being taken at rates altogether too low, which led to financial stringency and suspension.

A very large number of business blocks and private dwellings are going up in Vancouver at present and there must be good times among skilled mechanics although the labor organizations here say that there is barely enough work to go around and they want no help from outside.

United States War Taxes.

Following are some of the provisions of the new United States war revenue measure: A two-cent revenue stamp on every check or sight draft. A two-cent stamp on every inland bill of exchange, time draft, promissory note or money order for each \$100. One cent

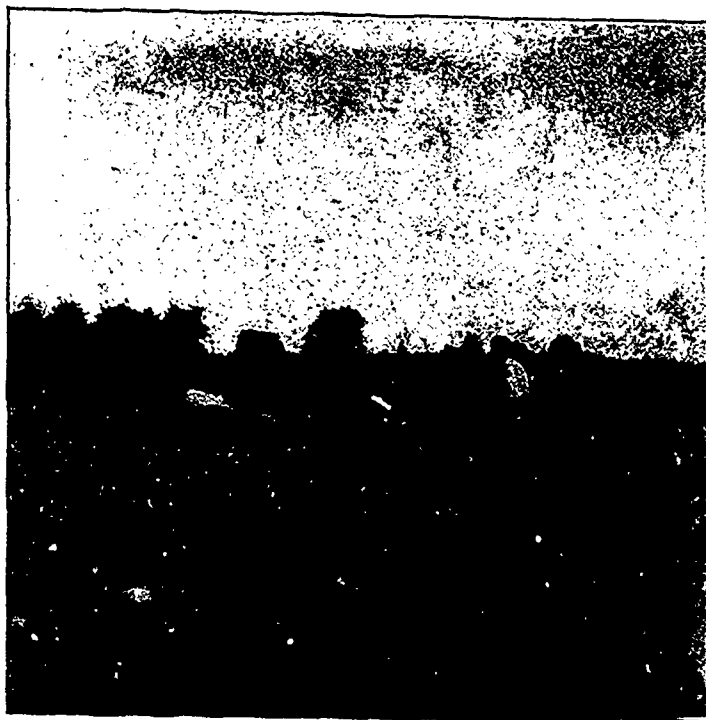
on each telegraph message sent. Eight cents per \$100 on each life insurance policy, unless taken on the industrial weekly payment plan, when the charge is 40 per cent. of the first weekly payment. Twenty-five cents on each one year lease, 50 cents on a lease between one and three years, and \$1 on a lease exceeding three years. Twenty-five cents on each mortgage between \$1,000 and \$1,500, and 25 cents on each \$500 additional. One dollar extra for a passage ticket to foreign port costing not more than \$30, \$3 extra if it costs between \$30 and \$60, and \$5 if it costs more than \$60. Ten cents extra every time you occupy a seat or berth in a parlor or sleeping car. A tax ranging from 75 cents to \$15 per \$100 on legacies above \$10,000 according to the total value. Fifty cents on a surety bond. One cent a pint on wines. From 25 cents to \$1 on each custom house entry, and 25 cents on warehouse receipts. Twenty-five cents on each protested note.

on new checks and on new warehouse receipts.

On the Red River.

Winnipeg is not noted for the picturesque nature of the country surrounding the city. While we can boast of a very rich and productive soil, our local prairie country is not particularly attractive from the scenic point of view. Along the wooded banks of the Red and Assiniboine rivers, even within the city limits, however, some very pretty views are obtainable, and such points as Bird's Hill and Stony Mountain, within short driving distance of the city limits, however, some very pretty monotonous prairie. Winnipeg is by no means without attractive spots, made so by nature. This week we show a snap shot scene on the Red river, Winnipeg.

The town of Portage la Prairie, Man., offers school debentures for sale by tender to August 16.



ON THE RED RIVER, WINNIPEG—Amateur Vibe Camera Photo by Geo. S. Dingle

The producer who ships a car of wheat under the new stamp law will pay taxes on that car as follows: On the telegram announcing its shipment, 1 cent; on the bill of lading, 1 cent, on the inspection certificate on arrivals at Chicago, 10 cents; on the weighing certificates, 10 cents; on the warehouse certificate when it is inspected into store, 25 cents; on the draft he draws against the car at shipment, 2 cents; on the sale of the grain at Chicago, 1 cent on every \$100 of value, 5 cents. His commission man will have to put a 2-cent stamp on the check with which he pays the countryman's drafts, and he will also have to put a 2-cent stamp on the check which he sends to the countryman for whatever balance there is after the grain is sold. These taxes the countryman will have to pay. The shipper who buys the wheat will have to go through about the same motions on the same car, paying new taxes on the new certifi-

Financial Notes.

Portage la Prairie four and a half per cent. school debentures are offered by tender to August 16.

F. R. Godwin, manager of the Bank of Ottawa branch at Mattawa, has been appointed manager of the Rat Portage branch. Mr. Neeve, of Rat Portage, has been appointed manager of the Rideau street branch in Ottawa.

General Manager Walker, of the Canadian Bank of Commerce, in his address at the recent annual meeting of the bank, said of Manitoba: It is no longer a province to which the east finds it necessary to extend its financial indulgence. It has, instead, become the object of our admiration and sometimes of our envy. Immigrants are now rapidly settling in Manitoba, while at the same time farming operations are being extended.

The Canadian Bank of Commerce has

W. E. Sanford M'g. Co.
(LIMITED)

CLOTHING
MANUFACTURERS

Hamilton, " " Ontario

Office and Sample Room :
Corner Bannatyne and Princess Streets
WINNIPEG

WHEN YOU HAVE

**No. 1 Hard
Wheat.**

OR OTHER GRAIN FOR SALE
Write or wire to

THOMPSON, SONS & CO.

Grain Brokers and Grain
Commission Merchants

WINNIPEG, MAN.

They will get you the best prices
in the market

MACKENZIE & MILLS

Importers of and Wholesale
Dealers in

**Teas, Roasted and Ground Coffees
Jams, Etc.**

Packers of Britannia, Beaver and Buffalo Blend
"Packet Teas" and Sole Agents for Thos.
Lipton's Package Teas for Manitoba, N.W.
Territories and British Columbia.

244 Princess St., Winnipeg.

LIPTON'S
CEYLON TEAS

The finest the world can produce
Pure, fragrant, delicious
Awarded highest honors at the World's Fair
Over one million packages sold weekly
A trial will convince you of their merits

MACKENZIE & MILLS

Sole Agents for
Manitoba, the Territories and British Columbia



BOYCE'S CARRIAGE WORKS

Manufacturer of

BUGGIES

Wagons, Sleighs, Klondike Sleighs and Carts,
Vehicles of every Description

All Work Home-Made and Warranted
Ordered Work our Specialty

316 to 324 Ross St., Winnipeg

**WE GIVE AN
ABSOLUTE
GUARANTEE**

that the following well-known brands
of Cigars are clear Havana filled goods,
viz., KHEDIVE, RED CROSS,
REPUBLIC, LA HISPANIA and
ODETTE.

GEO. F. BRYAN & CO.

Cigar Manufacturers, Winnipeg.

A FEW THINGS

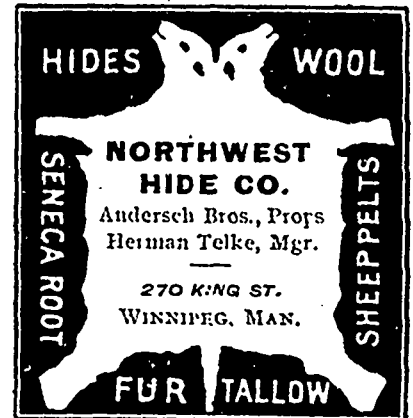
that should be found in every
well regulated household

DREWRY'S

Choice Stock Ale Extra Porter
Canadian Pilsner Lager
(A Fine Light Beer)
Golden Key Brand Aerated Water
Imperial Table Sauce } Choice Table
India Chutney } Relishes

E. L. DREWRY

Manufacturer and Importer, Winnipeg.



GRANULAR **Ogilvie's Hungarian** **CREAMY**
HAS NO EQUAL **FLOUR** **HAS NO EQUAL**

STANDS unparalleled in its
Distinctive Qualities and
Peculiar Advantages. We are
aware others are attempting to
imitate our Brands, which is the
Strongest Guarantee of the Super-
iority of

"OGILVIE'S FLOUR"

Messrs the Ogilvie Milling Co., Winnipeg, Man.

Dear Sirs—We have pleasure in stating that the
quality of the flour made in the Winnipeg mills, of
which we have imported considerable on this crop,
has given the highest satisfaction to everyone who
has baked it. Glasgow is pre-eminently a city of
large baking establishments, some of them with a
capacity of 2000 barrels per week, and all managed
by gentlemen well qualified to give a sound verdict
on the merits of any flour. With remarkable
unanimity they have expressed the opinion that
nothing finer than your Patent grade has ever been
placed on the market. The baking results have
been exceptionally high, both in regard to color and
out-turn, and we can invariably command a higher
price. We are, yours respectfully,
WILLIAM MORRISON & SON.

IN HANDLING
OGILVIE'S FLOUR
YOU HAVE

THE BEST

Each bag guaranteed. Sewn with our
Special Twine, Red, White and Blue.

OGILVIE'S HUNGARIAN

Unequalled for fine Cakes and Pastry. Stands
unrivalled for Bread Making. Make the sponge
thin. Keep the dough soft. **Do not make it
stiff.** For pastry use little less flour than usual.

decided to open several branches in the West, Vancouver is one of the points selected. At this point a handsome bank building will be erected at once on one of the principal business corners, on the L. A. Hamilton property. In the meantime, business will be carried on in temporary quarters. H. H. Morris, of Barrie, Ontario, who acted as manager in Winnipeg while Mr. Mathewson was in Europe recently, will have charge of the new Vancouver branch, which will be opened in a few days. Branches will also be opened at Cranbrook and Fernie, in the East Kootenay district, on the new Crow's Nest Pass railway. T. R. Billett, accountant of the Winnipeg branch, will take charge at Fernie, and J. W. Smythe, accountant at Orangeville, Ontario, has been selected to manage the Cranbrook branch. Mr. Mathewson, manager of the Winnipeg branch, recently returned from a trip to East Kootenay whither he went in connection with the establishment of these branches. He thinks that Fernie will become the chief town in the coal region, and already preparations are being made on a large scale there for coal mining and coke manufacturing. Cranbrook, he says, is a beautiful location for a town, and there is quite an area of good land in the district, which will be available for settlement. There are also some promising mining properties in the district. Near Fernie the C. P. R. are erecting a large saw mill which will have a capacity of 100,000 feet.

Grain and Milling News.

A grain elevator is to be built at Swan Lake station.

The new elevator of the Northern Elevator Co., Winnipeg, at Indian Head, is nearing completion.

Ground soapstone manufactured at Greensboro, N. C., has been openly placed on the market, and advertised as an adulterant for flour. A circular quoting prices in ton lots has been distributed among millers east.

The elevator pool at Buffalo has collapsed, and transfer rates have declined from 7-8 cent per bushel to 1-3 cent. J. J. Hill, with his "Great Northern" steel elevator, insists that he is the "farmer's friend" who has broken this great monopoly.

Several elevators and warehouses are now in course of erection at points on the Dauphin railway in Manitoba. Elevators with a capacity of 25,000 to 35,000 bushels are being built, one at Oakland and three at Dauphin. Warehouses are in course of construction at Ogilvie, two at Glenella, one at Mackinac, and one at Valley River.

Grocery Trade Notes.

The reported failure of the California almond crop is expected to cause an advance in Tarragonas, but there is no indication of higher prices yet. Brazil nuts remain dull.

Cable advices received from Japan report the tea market excited and strong, and all limits that have been sent out so far have been far too low, as prices recently have advanced fully \$2 per picul, and they are expected to go considerably higher. Japan teas suitable for our trade are almost impossible to get.

Whether peace is obtained within the next few days or not, says an

exchange, there is likely to be a famine of cigars before the end of the year. The war, and the hostilities leading up to it, have cut off the two chief sources of the world's tobacco supply. Cigar manufacturers and cigar importers have hitherto depended on Havana and Manila for their raw material. In other countries certain inferior varieties of the weed are grown for plug tobacco, but the colonies of Spain have hitherto possessed almost a monopoly of the special species of which fine cigars are made.

Hardware and Paint Trade.

A Montreal report says: Prices generally are firm, especially for white lead, which is none too plentiful. Linseed is still scarce and all foreign stocks arriving meet with ready buyers at full prices.

The Montreal Gazette says: The feature during the past week has been the stronger feeling in the market for glass, and prices have been marked up 10c per box of 50 feet and 20c per box of 100 feet, which is due principally to cable advices from Belgium noting a sharp advance of fully 20c per box, owing to the scarcity of stock. The demand from local buyers in the home market has been active of late, and the imports this month will be much larger than usual owing to the fact that the reduction of 25 per cent in the duty on Belgian glass will no longer exist after the 31st of this month.

Only a week or two ago The Commercial referred to the activity in the stove trade and prospects of higher prices. The advance has already gone into effect. A circular has been issued by the stove manufacturers announcing an advance of five per cent. This has gone into effect in Winnipeg as shown by the following circular issued by the local houses in the stove trade:

TO THE TRADE.

On account of the advance in material and labor in Canada within the last few months, the stove manufacturers have found it necessary to advance prices 5 per cent on stoves. This announcement is signed by The McClary Manufacturing Co., The Gurney Stove and Range Co., Jopp Bros. & Co., Clark Bros. & Co., Gurney Foundry Co., The Burrow, Stewart & Milne Co., Limited, The D. Moore Co., Limited, per Merrick, Anderson & Co., The Wm. Buck Stove Co., per W. G. McMahon, Bowes, Jamieson & Co.

Dry Goods Trade.

Among the promised features of the dry goods trade for the spring of 1899 is a phenomenal sale of gingham. For blouse waists this fabric is particularly well suited, and blouses will preserve their popularity throughout the summer of the century's closing year. Extensive preparations are being made for this trade. The Canadian Colored Cotton Mills company expect to more than double their output of gingham. In all widths from twenty-five to thirty-two inches, the trade may purchase these goods. Two new widths, thirty and thirty-two inches respectively, have been added this year to the range carried by the Canadian manufacturers.

One of the most satisfactory features of the trade is that all the finer goods will be made in thirty-five yard pieces. The legitimate retail dry goods trade has been seriously hand-

capped by the lack of variety in the goods which they were able to offer their customers, as compared with the offerings of the large department stores. A limited amount of capital and a limited number of customers necessarily mean that the merchant can carry only a limited stock. If he is unable to purchase in small piece lengths there is a sameness which in dress goods is especially objectionable. Only a few dress lengths of brightly colored gingham with conspicuous designs can be sold in a village store. Manufacturers should pay more attention to this matter if they are anxious to assist in the maintenance of the smaller retailers.

The Lumber Trade.

The saw mill at North Bend, B. C., the property of the Ottawa Milling and Milling Co., has been destroyed by fire.

Reports from Seattle say the market is firm for both shingles and lumber, and the demand good. At Minnesota points staves are quoted at \$2.

The Failure Record.

Canadian failures for the second quarter of 1898 according to Dun's Review, were not only much fewer, as weekly returns have shown, but very much smaller than those of the first quarter. The number is nearly 10 per cent smaller than in the first quarter of this year, and nearly 30 per cent smaller than in the corresponding quarter of last year. The aggregate of liabilities is almost 34 per cent smaller than in the first quarter of this year, and being \$1,945,162 against \$2,939,351, is nearly the same ratio smaller than in the corresponding quarter of 1897. The decrease, moreover, is shared by manufacturing and trading branches, for in manufacturing the liabilities are \$390,614 against \$830,890 for the same quarter last year, and in trading \$1,508,762 against \$2,099,161 last year. There is a little increase in the "other commercial" liabilities, which is of no importance, and a single private banking failure for \$54,000 against none last year is the only change in that branch.

A Strong Man.

A recent issue of the Canadian Sportsman contains an article on J. Alton L. Harris, who, according to the description, is the coming strong man of the world. Harris, who is a fourth year medical student of McGill university, Montreal, has performed some wonderful feats of physical strength, and he now claims the title of champion amateur strong man of the world. Mr. Harris, who is a trained athlete, says that the famous Bovril—extract of beef is above everything else as a toner up of the system and a strength giver. After trying many other articles he finds that Bovril affords the most perfect nourishment.

Tenders.

Tenders are called up to August 15, for supplies for the Indian department for the district of Athabasca.

Tenders are called for macadam paving portions of the following Winnipeg streets: Garry, Ellice, Vaughan, Charlotte, Ellen, Rupert; also for boulevarding Smith, Carlton, Edmonston and York streets; also for a sewer on Garry street.

WHEAT BRAN OATS FLOUR



POTATO

BAGS

—FOR—

EVERY PURPOSE



WRITE FOR SAMPLES AND PRICES



E. NICHOLSON, 124 PRINCESS STREET, WINNIPEG

Manitoba and Northwest Agent for THE CANADA JUTE CO., Limited, Montreal

OUT OF EVERY TEN GROCERS

Who have tried **Edwardsburg Starch**
TEN have been completely satisfied with it.
Have you tried it?

FOR SALE BY ALL WINNIPEG WHOLESALE GROCERS

Edwardsburg Starch Co. Cardinal, Ont

E. NICHOLSON, Wholesale Agent, 124 Princess Street, Winnipeg.

FIRE NOTICE

We regret to advise our friends that, on the morning of the 4th May, our Factory was destroyed by fire. Re-building is already well under way, and we hope to soon be ready to fill all orders.

THE TRURO CONDENSED MILK AND CANNING CO.

TRURO, N. S.

E. NICHOLSON, 124 Princess Street, Winnipeg, Wholesale Agent.

Statistical Wheat Reports.

WHEAT IN CANADA

Stocks of Wheat in Canada at principal points of accumulation are reported as follows:

Montreal	109,000
Toronto	22,000
Kingston	3,000
Winnipeg	135,000
Manitoba elevators	480,000
Fort William, Port Arthur and Keewatin	522,000
Total July 9	1,276,000

BRADSTREET'S REPORT OF STOCKS.

Total stocks in the United States and Canada, east of the Rocky Mountains as reported by Bradstreet's on July 9, were 15,880,000 bushels.

Total stocks in the United States and Canada a year ago were 24,284,000 bushels, according to Bradstreet's report.

Pacific coast wheat stocks on July 1 were 2,035,000 bushels, compared with 1,112,000 bushels a year ago.

THE VISIBLE SUPPLY.

The Chicago visible supply statement of stocks in the United States and Canada, east of the Rocky Mountains for the week ended July 16, was 10,461,000 bushels, being a decrease of 2,055,000 bushels for the week. A year ago the visible supply was 16,609,000 bushels, two years ago 47,220,000 bushels, three years ago 41,237,000 bushels.

WHEAT STOCKS AT U.S. POINTS.

Chicago	375,000 bushels
Duluth	2,259,000 "
Minneapolis	4,886,000 "
New York	1,158,000 "
Buffalo	406,000 "

STOCK OF OATS AND CORN.

The visible supply of oats in the United States and Canada, east of the Rocky Mountains is 5,572,000 bushels, compared with 7,003,000 bushels a year ago. The visible supply of corn is 19,937,000 bushels, compared with 15,130,000 bushels a year ago, according to the Chicago statement.

WORLD'S WHEAT STOCKS.

Stocks of wheat in the United States, Canada, in Europe and afloat for Europe, on July 1, for a series of years, were as follows, Bradstreet's report: July 1, 1898, 79,600,000, July 1, 1897, 78,500,000, July 1, 1896, 124,681,000; July 1, 1895, 148,517,000.

CROP MOVEMENT.

The following table gives the receipts of wheat at the four principal United States spring wheat markets from the beginning of the crop year, August 1, 1897, to date, compared with the same period of last year:

	This Crop	Last Crop
Minneapolis	72,490,710	62,333,940
Milwaukee	9,424,553	8,300,277
Duluth	42,446,776	40,113,055
Chicago	37,026,215	15,271,726

Total 161,388,254 132,018,998

The following table gives the receipts of wheat at the four principal United States winter wheat markets from the beginning of the crop movement, July 1, 1897, to date, compared with the same period of last year:

IT REACHES THE TRADE



Advertise Businesses for Sale; Stocks of Goods for Sale; Situations Vacant or Wanted in Business Establishment, etc., in

THE COMMERCIAL



The only Journal that reaches the trade of Western Canada from Lake Superior to the Pacific.....

Special Low Rates for Situations Wanted or Vacant

	This Crop	Last Crop
Toledo	391,851	62,106
St. Louis	557,047	459,042
Detroit	30,673	40,434
Kansas City	501,200	513,000
Total	1,480,771	1,074,672

Seneca Root—Dry, 15c.
Poultry—Chickens, 50@55c per pair; turkeys, 9@10c per lb., live.
Potatoes—New \$1 per bushel.
Hay—4.50@\$5 per ton.

Winnipeg Raw Fur Prices.

Prices as to size and color, for prime skins: Skins taken out of season range much lower:

Badger	\$.05	\$.50
Bear, black	5.00	25.00
Bear, brown	4.00	20.00
Bear, yearlings	2.00	8.00
Bear, grizzly	5.00	16.00
Beaver, large	5.00	6.50
" medium	3.00	4.00
" small	1.50	2.25
" cubs50	1.00
" castors, per lb	2.50	5.50
Fisher, dark	6.00	9.00
Fisher, pale	3.00	5.00
Fox, cross dark, large	5.00	15.00
" cross pale	2.50	5.00
" kitt10	.50
" red	1.00	1.60
" silver dark	40.00	75.00
" peale	25.00	60.00
Lynx, large	1.50	2.00
" medium	1.00	1.25
" small50	.75
Marten, dark	2.50	5.00
" pale or brown	1.50	4.00
" light pale	1.00	2.25
Mink, dark	1.00	1.50
Mink, pale75	1.25
Musquash, winter04	.09
" spring07	.10
Otter, dark	6.00	10.00
Otter, pale	5.00	8.00
Skunk25	.50
Wolf, timber	1.00	1.50
" prairie40	.75
Wolverine	1.00	3.50

HOME WORK FOR FAMILIES

We want a number of families to do work for us at home, whole or spare time. The work we send our workers is quickly and easily done, and returned by parcel post as finished. Good money made at home. For particulars ready to commence send name and address.

THE STANDARD SUPPLY CO.,
Dept. B., LONDON, ONT.

TRAVELLER

For the Province of Manitoba. Good opening for experienced man with a good connection. Apply personally or by letter; if by letter, name firms that have been served and the time with each. Personal or written applications will be treated as strictly confidential.

JOHN CALDER & CO.,
HAMILTON.

BUSINESS FOR SALE.

A General store business for sale, in the town of Hartney, doing a good trade, a clean stock, good stand. N. P. R. R. building into town now. Possession at once.

S. K. COLQUHOUN,
HARTNEY, MAN

Winnipeg Prices a Year Ago.

Following were Winnipeg prices this week last year:

Wheat—No. 1 hard, in store Fort William, 76½c; No. 2 hard, 73½c.
Flour—Local price per sack: Patent, \$1.95; Bakers, \$1.75.
Bran—Per ton, \$8.50.
Shorts—Per ton, \$10.50.
Oats—Per bushel, car lots on track, Winnipeg, 23@26c.

Barley—Feed, 23@24c per bushel.
Butter—Dairy, Shippers buying at 10@11c, and 14½@15c paid for creamery at the factory.
Cheese—6½c paid to factories.
Eggs—Buyers paying 1c net.
Beef—City dressed, fresh, 4½@6c.
Mutton—5½@7c.
Hogs—Dressed, 5½@6c.
Cattle—Butchers, grassers 2½@3c.; Hogs—Live, off cars, 4½@4¾c for best bacon.
Sheep—2½@3c off cars here.
Hides—No. 1 green, 6½@7c.
Wool, 8½@9½c.

WANTED. Honest, energetic young men, farmers' sons, teachers, students, clerks and others who are admirers of Mr. Gladstone, and would like to spend the next three months in telling the matchless story of his life. We teach you how to do the work and guarantee success. From \$2.00 to \$5.00 a day absolutely sure. There is no fear of failure and it will be enjoyable work. Particulars furnished free.

BRADLEY-GARRETSON CO., LIMITED,
TORONTO, ONT.

MEN AND WOMEN

Who need to make money can do so without risk or capital, by soliciting orders for our memorial edition of "The Life of Gladstone," by Castell Hopkins, with introduction by the honorable the Minister of Education, Dr. Ross. This book is a Canadian Classic. The story of his life is told with thrilling interest. His death and imposing national funeral will both be described and illustrated. 512 large quarto pages. It measures 8x10½x1½ inches. Retail \$2.50, worth \$4.00. Magnificent binding, profusely illustrated. Prospectus 75 cents. Liberal terms.

BRADLEY-GARRETSON COMPANY,
LIMITED,
TORONTO

TO THE TRADE

Indian Treaty Supplies

Hudson Bay Point Blankets in all weights; Colored Blankets in Red, Green, Navy and Black; Bright Colored Union Rugs; Bright Colored Wool Rugs, 2½, 3½ and 4 lb; Large and Small Indian Reads; Wool Shawls, in Red, Blue and Yellow Stripes (Reversible Velvet); Black Cloth Shawls; Fancy Wool Plaid Shawls in Greus and Reds.

We Can Fill

Letter, Telegraph or Travellers Orders for these goods, upon receipt of order. Filling Letter Orders a specialty.

John Macdonald & Co.

Wellington and Front Sts., E.
TORONTO, ONT.

RICE LEWIS & SON

LIMITED

ARTHUR H. LEE, President
A. BURDETT LEE, Vice-Pres. and Treas.

WHOLESALE

HARDWARE

BAR

IRON AND STEEL

Steam Pipe and Fittings

Sporting Goods



Write for Prices

TORONTO, - ONT.

Gillespie Ansley & Dixon

WHOLESALE

HATS, CAPS
FURS AND
STRAW
GOODS

Sole Agents for Christy's Celebrated Hats
Stock quite complete.

FILLING LETTER ORDERS A
GREAT SPECIALTY

Wellington Street, - TORONTO

J. H. Bastedo, Western Representative
Manitoba Hotel, Winnipeg

Wholesale

Millinery



WE
EXCEL

Those who have inspected our samples for Fall have expressed their appreciation of the excellence of our range. Value and variety unsurpassed.

KINDLY RESERVE ORDERS



THE D. McCALL CO. Limited

TORONTO
MONTREAL WINNIPEG

W. R. JOHNSTON & Co.

(Late Livingston, Johnston & Co.)

WHOLESALE MANUFACTURERS
READY MADE

CLOTHING

Corner Bay and Front Streets, Toronto

Western Representatives: A. W. Lasher, W. W. Armstrong.

Armour Canning Co.'s Star Brand Pork and Beans

WITH TOMATO SAUCE

The Best Goods on the Market at a moderate price.

Try Sample Case and be convinced



JAMES TURNER & CO., AGENTS, HAMILTON, ONT.

"Excelsior" Ready Rations

Are not extracts or essences, but COOKED FOOD READY FOR USE. The miner in his camp, or the farmer in the hayfield can have a cold dinner in 10 seconds or a hot one in 10 minutes. By using our **TEA WAFERS** he can carry material for **100 Cups of Tea in a Snuff Box**. They are all conveniently packed for easy transportation, and are **CHEAP AS FOOD BOUGHT AND COOKED**.

LOCKERBY BROS.

ALL GOODS PUT UP IN SMALLEST POSSIBLE BULK

St. Peter St., MONTREAL

Manitoba

D. McIntosh, general merchant, Dauphin, offers his business for sale.

The Carberry summer fair opened on July 21, and was a very successful event.

Mr. Haslam, of Headingly, near Winnipeg, contemplates establishing vegetable evaporating works.

Rosen & Duggan have bought D. Fraser's general store at Selkirk and will continue the business.

Harry Peever is opening a harness shop at Oak Lake, making the third business of the kind in the town.

An auction sale of military stores—tents, blankets, etc., will be held at the military stores, Winnipeg, on July 28.

Wm. Moffat, general merchant, Kerfoot, has sold his stock to F. A. Moore, who has opened business at Petrel.

The first harvest excursion party from Ontario arrived in Winnipeg Thursday evening. There were about 600 people in the party.

J. M. O'Loughlin, of New York, formerly of Winnipeg, was renewing old acquaintances in this city this week. He returned homeward on Thursday.

The Queen's hotel, Minnedosa, has changed management, Mr. Russell, of Winnipeg, having entered into possession, Mr. Reeves retaining an interest in the bar.

It is stated that the proposed railway from Brandon to Deloraine will be built this year, with a spur to the coal district south of Deloraine, where it is said a plant for mining coal will be put in.

It is said 63,000 people visited the Winnipeg Industrial. This is the record of the turnstiles, but some persons no doubt visited the fair several times. It is, however, the largest attendance on record.

The Brandon summer fair held this week is reported to have been a great success, exceeding all previous years in almost every department. A large portion of the exhibits and attractions of the Winnipeg fair went to Brandon.

The summer fair at Portage la Prairie this week was mainly of a local character, owing to the fact that the Brandon and Carberry fair dates made it difficult for exhibitors to take in the Portage fair. The exhibition, however, was very creditable to the district.

West Selkirk.

A representative of The Commercial during a visit to the town of Selkirk, Manitoba, a few days ago gathered some interesting information regarding business conditions at that point. For the information of readers of The Commercial who dwell in distant parts and are not familiar with the geography of Manitoba it may be well to explain that Selkirk is situated on the Red river, about twenty-three miles north of Winnipeg, and is one of the oldest settlements in this western country. It is a lumbering, fishing and trading centre of considerable importance and is the shipping port for all the extensive trade from the shores and fisheries of Lake Winnipeg. It also enjoys a considerable trade with the

Indians and half-breeds, who dwell along the banks of the Red river and on the St. Peter's Indian reservation, which is near here.

No attempt is to be made here to describe Selkirk and its industries, as this has already been done repeatedly by The Commercial and other publications, but a few notes on its present business conditions will no doubt be appreciated by the readers of this journal.

In its lumbering industry Selkirk seems to be enjoying an extensive and lucrative trade. The mill of H. B. Mitchell, is cutting large quantities of spruce logs into excellent lumber and the yards of Wm. Robinson, and I. Riley are drawing large supplies continually from the lake mills and shipping these to all points in Manitoba. There is a large demand for the product of all these concerns and the only difficulty experienced is in filling orders. Wm. Robinson has also a planing mill and box factory at work here where a number of men are employed.

Very few people, even among those who live near Selkirk have any idea of the extent of the operations, in the packing and shipping of fish, which are carried on at this point. The Selkirk Cold Storage and Transportation company of which Wm. Robinson is one of the principal partners; The Selkirk Fish company and several other concerns are all engaged more or less extensively in the business of packing and shipping Lake Winnipeg fish, such as sturgeon, whitefish, &c. These are shipped in a frozen condition, and the business extends to points as distant as the city of New York and indeed to almost every considerable place on this continent. So excellent is the system of freezing and packing these fish and the condition of them at all times for food purposes that they displace fish of the same species at almost every point where they can be found in the United States. The Commercial representative had the pleasure of being shown through the new cold storage plant of the Selkirk Cold Storage and Transportation Co., where immense quantities of fish are being continually frozen and handled by the effective and economical ammonia process, and on the conclusion of his visit could not help expressing surprise at the extent and completeness of the plant. The fish are kept constantly in a temperature ranging from 17 degrees to zero during the freezing and packing process and are thus made to retain all the properties of freshly caught fish which to all intents and purposes they are right up to the time of their consumption, even if this be many months from the time of catching and in latitudes as far south as the Gulf of Mexico. One of the engines used in running this plant is alone worth something like \$10,000.

General mercantile business in Selkirk this year is in a fairly flourishing condition. The Indians on the neighboring reserve have recently received their treaty money amounting in all to some \$8,000, and as a result there is considerable cash in circulation among the merchants just now. Business in Selkirk is always of a more stable character than that in the ordinary agricultural towns in Manitoba. The varied character of its industries insures this.

The Selkirk Trading Company, handling a stock of general goods, has just moved into a new stone building and with Mr. C. C. Lee as man-

ager is looking forward to a greatly increased trade.

Mr. J. G. Dagg is opening a new stock of general goods in his commodious store, which has heretofore been occupied by the Selkirk Trading Co.

Rosen & Duggan recently bought out the general store of David Fraser and are making a strong effort to establish themselves in the good graces of the trading public of Selkirk.

The passenger service Lake Winnipeg is beginning to add something to the importance of Selkirk, as it is the embarking point. Many people have already taken advantage of the excellent passenger service afforded by the boats of Messrs. Reid & Tait for a run over Lake Winnipeg to Grand Rapids and Selkirk Island, and large numbers more are contemplating the trip. Those who have already taken it either this year or last have expressed themselves as delighted with the sail and with the comforts provided, and we confidently recommend this as one of the very best short trips to be had from Winnipeg, and all points in Manitoba.

In conclusion it may be said that Selkirk gives this summer, to even a casual observer, an impression of business, progress and importance such as is conveyed by very few points of its size in the province.

Tenders.

Tenders are asked for \$5,000 school debentures of the town of Gladstone, Man.

Tenders for the work of widening the outlet of Lake Manitoba will be shortly called for.

Tenders will be received until August 1, for the sheeting of the Kainay farmers' elevator with metallic sliding and putting in of a new bin spouting.

For Consideration.

A few weeks ago an engineer who happened to be on the lockout at Sheffield, came home late one night, much the worse for drink, and, to his surprise, on arriving he found the door locked, and the house all in darkness. Trying the door a few times, he bawled out:

"Mary, Mary, let me in!"

All of a sudden up went the window, and Mary popped her head out.

"Heleoa! Wheer dost reckon theaw's bin while now?" she asked.

"Oh, Mary, we've been considering th' present strike."

"Oh, well, then," said Mary, "sit thee dawn on doorstep and consider th' present lockout."

Stranger—"Did you ever think what you would do if the rope should break or your foot should slip when you are cleaning the outside of one of those windows on the seventeenth floor?"

Window Cleaner—"Yes, sir, I would go out of the business entirely."

JAS. MCGREADY & CO.

WHOLESALE

* Boot and Shoe Manufacturers

MONTREAL, QUEBEC

W. WILLIAMS, Agent.

LET THE HEAT COME!

No trouble now to handle BUTTER and keep it firm and fresh. The new way is a pleasure compared to the old way. If it goes into our Ammonia Cold Storage Rooms fresh, it comes out fresh. If it goes in bad it comes out bad. At any rate it always brings the top price according to grade. Send yours to us.

J. Y. GRIFFIN & COMPANY

Pork Packers and Commission Merchants, Winnipeg and Vancouver.

LEITCH BROS.

Oak Lake

"Anchor Brand" **Flours**

FROM NO. 1 HARD WHEAT.

Bran, Shorts and all kinds of Chopped Feed and Grain.

ADDRESS

OAK LAKE, MANITOBA

The John L. Cassidy Co

LIMITED

339 and 341 St. Paul St., MONTREAL

Importers of **China, Glass and Earthenware, Etc., Etc.**

A. C. Beach, their old reliable traveller, will represent them in Manitoba, the Territories and B.C.

Communications addressed to him at 312 McDermot St., Winnipeg, will receive prompt attention.

Western Cigar Factory

713 to 723 Main St., Winnipeg

Manufacturers of the following well-known brands, T.L., Rosa Linda, The Gordon, Forget-Me-Not, Belle Rose, Key West. Other Brands kept in stock. Mail Orders promptly attended to.

THOS. LEE, Proprietor

SADLER & HAWORTH

Formerly Robin, Sadler & Haworth

MANUFACTURERS OF

LEATHER BELTING

MONTREAL AND TORONTO

JOSEPH RODGERS & SONS, LTD.

SHEFFIELD ENGLAND

◆◆◆◆
Avoid purchasing imitations of our Cutlery, for they can be had in abundance.

Each blade of our Goods bears the exact mark here represented.

◆◆◆◆



Cutlery

to Her

Majesty

JAMES HUTTON & CO., MONTREAL

SOLE AGENTS
IN CANADA

Winnipeg Hardware and Metal Prices.

Tin—Lamb and Flagg, 56 and 28 lb ingots, per lb 19@20c.

Tin Plates—Charcoal plates, I C, 10 x 14, 12 x 12 and 14 x 20, \$4.50@4.75; I X, same size box, \$5.75@6; I C, charcoal, 20 x 28, 112 sheets to box, \$8.50@9; I X, box, 20 x 28, 112 sheets, \$10.50@11.

Terne Plates—I C, 20 x 28, \$8.50 @ 9. Iron and Steel—Bar iron, 100 lbs., base price, \$2.05 band iron, 100 lbs., \$2.65@2.75; Swedish iron, 100 lbs, \$5.25 @6; sleigh shoe steel, 2.75@3; best cast tool steel, lb., 9@11c; imitation Russian sheet, 7@8c; genuine Russian sheet, lb., 12@13c.

Sheet Iron—10 to 20 gauge, \$3; 22 to 24 and 26 gauge, \$3.25; 28 gauge \$3.50.

Canada Plates—Garth and Blaina, 3.00 @3.15.

Galvanized Iron—American, 20 gauge, \$3.75; 22 and 24 gauge, \$4; 26 gauge, \$4.25; 28 gauge, \$4.50 100 lbs.

Iron pipe is quoted as follows per 100 feet: 1/2 inch, \$2.50; 3/8 inch, \$2.75; 1/2 inch, \$3; 5/8 inch, \$4; 1 inch, \$5; 1 1/2 inch, \$7; 2 inch, \$8.50; 2 1/2 inch, \$11.50.

Lead—Pig, per lb., 4 1/2 to 5c.

Sheet Zinc—In casks, \$6.50 lb., broken lots \$7.00.

Solder—Half and half (guar) per lb., 14@16c.

Ammunition—Cartridges—Rim fire pistol, American discount 40 per cent; rim fire cartridges, Dominion, 50 and 5; rim fire military, American, net list; central fire pistol and rifle, American, 12 per cent; central fire cartridge, Dominion, 30 per cent, shot shells, 12 gauge, \$6 @ 7.50; shot, Canadian, soft, 6 1/2c; shot, Canadian, chilled, 6 1/2c. Robin Hood powder, 17 lb kegs, \$10; 4 lb kegs, \$3; Causter, 9 oz., 60c. Loaded shells, 12 gauge, soft shot, \$18 per 1,000. No. 10 gauge, \$20.70 per 1,000.

Dupont Powder—Dupont Rifle FFG, 25-lb keg, \$5.00, 12 1/2 lb keg, \$2.75, cases of 4 6 1/2 lb kegs, \$6.60, cases of 24 1 lb canisters, \$8.50, cases of 48 1/2 lb canisters, \$9.25; Dupont Rifle FFFG, 25 lb keg, \$5.25, 12 1/2 lb keg, \$3.00, cases of 4 6 1/2 lb kegs, \$7.00, cases of 24 1 lb canisters, \$9.00, cases of 48 1/2 lb canisters, \$9.75; Dominion Rifle, 25 lb keg, \$5.75, 12 1/2 lb keg, \$3, cases of 4 6 1/2 lb kegs, \$7, cases of 24 1 lb canisters, \$11, cases of 48 1/2 lb canisters, \$12; Sea Shooting Fg, 25 lb keg, \$6; Manitoba Sporting, 25 lb keg, \$8.00, 12 1/2 lb keg, \$4.25, cases of 4 6 1/2 lb kegs, \$9.00, cases of 24 1 lb canisters, \$13.00; Eagle Ducking, 25 lb keg, \$11.00, 12 1/2 lb keg, \$5.75, cases of 4 6 1/2 lb kegs, \$12.00; Crystal Grain, cases of 4 6 1/2 lb kegs, \$14.00, cases of 24 1 lb canisters, \$17; Blasting, 25 lb keg, \$3.00. Dupont Smokeless powder, 12 1/2 lbs, \$22.00, 6 1/2 lbs, \$11.25, 3 1/4 lbs, \$5.75, 1/2 canisters, \$1.00.

Wire—Galvanized barb wire, \$2.50 per 100 lbs.; Plain wire and staples, \$3.00.

Axes—Per box, \$6@9.

Nails—Cut, keg, base price, \$2.25 for 20 to 60d., with new classification of extras; common steel wire nails, 4 1/2 @ 6 inch, \$2.45 per keg, with usual extras for smaller sizes.

Horse Nails—Pointed and finished, oval heads. List price as follows: No. 5, \$7.50 box No. 6, \$6.75 box; No. 7, \$6 box; No. 8, \$5.75 box No. 9, 10 and 11, \$5.50 box. Discount of above list prices 5 per cent.

Horseshoes—Iron shoes, \$1.00; steel shoes, \$1.25; Snow shoe, \$4.25 per keg.

Rope—Sisal, lb., 13c base; manilla, lb., 14c base; cotton, 1/4 to 1/2 inch and larger, 16c lb.

Binder Twine—Sisal 12 1/2c; Manilla 13 1/2c, Pure Manilla 14 1/2c per lb.

Building Paper—Anchor brand plain 45c; do tarred 66c; Jubilee plain 57c; do tarred 73c.

Winnipeg Prices of Paints, Oils, Glass, etc.

Following are close jobbing prices, as to quantity:

White Lead—Pure, \$6.50 100 lbs; No. 1, \$5.50.

Prepared Paints—Pure liquid colors, gallon \$1.15@1.25.

Dry Colors—White lead, pound, 7c; red lead, kegs, 6c; yellow ochre in barrel lots, 2 1/2c; less than barrels, 3c; golden ochre, barrels, 3 1/2c; less than barrels, 4c; Venetian, red, barrels, 3c; less than barrels, 3 1/2c; American vermilion, 15c; English vermilion, \$1 per lb., Paris green, 18@19c; Canadian metallic oxides, barrel lots, 2 1/2c; less than barrel lots, 3c; English purple oxides, in casks, 3 1/2c; less quantities 4c lb.

Varnishes—No. 1 furniture, per gallon, \$1; extra furniture, \$1.35; pale oak, \$1.50; elastic oak, \$1.75; No. 1 carriage, \$1.50@1.75; hard oil finish, \$1.50@2; brown Japan, \$1; house painters' gold-size Japan, \$1.50; coach painters' do., \$2 @2.25; No. 1 orange shellac, \$2; pure orange shellac, \$2.50.

Sundries—Glue, sheets, 15c lb; broken, 12 1/2c; glue, white, for kalsomining, 16 @25c. Stove gasoline, case, \$4; benzine, case, \$4. Axle grease, imperial, case, \$2.50; Fraser's axle grease, case, \$3.75; Diamond axle grease, \$2.25 case. Coal tar, barrel, \$7. Portland cement, barrel, \$4@4.25; plaster, barrel \$3.00; plasterers' hair, P. P., 55c bale. Putty, in bladders, barrel lots, 2 1/2c lb., do., in 100 lb kegs, 2 1/2c, do., less than barrels, 1b, 3c. Alabastine, cases of 20 pkgs., \$6.50@7.50 as to color.

Window Glass—First break is quoted at \$1.80 per box of 50 feet and \$2.05 for second break.

Linseed Oil—Raw, gal., 57c; boiled, gal., 60c in barrels; less than barrels, 5c gallon extra, with additional charges for cans.

Turpentine—Pure spirits in barrels, 55c; less than barrels, gallon, 60c. An additional charge for packages for small quantities.

Oils—Range about as follows: Black oils, 25@30c gallon; clear machine oils, 27@30c; cylinder oil, 50@75c, as to quality; castor oil, 13c per lb; tanners' or harness oil, 65c; neatsfoot oil, \$1; steam refined seal oil, 55c; pure winter bleached sperm oil, \$2 gallon.

Refined Petroleum—Prices here are as follows: Silver star, 19 1/2c; crescent, 20c; oleophene, 20 1/2c in barrels. Car lots, 1c gallon less. United States oils in barrels are quoted at 2 1/2c for cocceue and 2 1/2c for sunlight.

Winnipeg Lumber Prices.

These prices are retail quotations at Winnipeg, such as contractors and others buy at. The mills quote delivered prices at Winnipeg, plus freight to outside points.

Dimension and Timber—No. 1, 2x4 to 2x12, 12, 14 and 16 ft, \$18.50, 18 ft, \$19.50, 20 ft, \$20.50, 22 ft, \$21.50, 24 ft, \$22.50; 3x6 to 3x12, 4x4 to 4x12, 6x6 to 6x12 and 8x8, 12, 14 and 16 ft, \$20.00, 18 ft, \$21.00, 20 ft, \$22.00, 22 ft, \$23.00, 24 ft, \$24.00; 8x10 to 12x12, 12, 14 and 16 ft, \$22.00, 18 ft, \$23.00, 20 ft, \$24.00, 22 ft, \$25.00, 24 ft, \$26.00; 2x4, 10 ft, \$20.50; 2x6 to 2x12, 10' ft, \$18.00. No. 2 dimen-

sion, \$2.00 less than No. 1. Dimension, 26, 28 and 30 ft, \$26.00. Timber, 26, 28 and 30 ft, \$28.00. \$1.00 per M advance on each inch over 12 inch in depth and width. Tamarac dimension same price as pine. Spruce dimension at \$2.00 per M less than pine. Cull plank, all widths at \$12.00 per M. B. C. fir dimension up to 32 feet at \$28.00 per M., 33 to 40 feet, \$30.00, 41 to 60 feet \$36.00. \$1.00 per M extra for each 2 in. over 12 in. in width or depth.

Boards—1st common, red pine, \$25.00, 2nd common, \$18.50, 3rd common, \$16.50; No. 1 cull, \$13.00, No. 2 cull, \$9.00; spruce, \$16.50. \$1.00 per M extra for stock boards. \$2.00 per M less for 6 to 8 ft. and under. \$1.00 per M less for 10 ft. No. 1 box, 14 in. and up, \$30.00, No. 2 box boards, 14 in. and up, \$23.00. Extra dressing \$2.00 per M.

Siding, Flooring and Ceiling—2nd, 4, 5 and 6 inch, white pine, \$36.00; 3rd, 4, 5 and 6 inch white pine, \$28.00; 1st and 2nd, 4, 5 and 6 inch red pine, \$30.00; 3rd, 4, 5 and 6 inch red pine, \$25.00; 4th, 4, 5 and 6 inch, red and white, \$20.00; Cull siding, red and white, \$16.00; B.C. No. 1 and No. 2 edge grain flooring, 3, 4 and 6 inch, \$32.00. \$2.00 per M advance for dressing both sides.

Bevel Siding—No. 1 white pine, \$26.00; No. 2 red and white, \$23.00.

Shiplap—Pine, 6 inch, \$18.00, 8 and 10 inch, \$20.00; Spruce, 8 and 10 inch, \$19.00, 6 inch, \$18.00; cull shiplap 8 and 10 inch, \$17.00; do., 6 inch, \$14.00.

Shingles—B. C. cedar, per M, No. 1, \$2.75, No. 2, \$2.50; B.C. cedar dimension shingles, \$4.00; B.C. cedar dimension band sawed, \$5.00.

Lath—Pine lath, No. 1, per M, \$3.00, No. 2, \$2.50.

Finishings—1 1/2, 1 1/4 and 2 inch—White pine, 1st and 2nd clear, \$65.00, 3rd clear, \$55.00, selects, \$45.00, shops, \$36.00; red pine, clear, \$40.00, selects, \$32.00; B.C. cedar clear, \$50.00; do., over 12 inch, \$55.00; B. C. fir edge grain No. 1 stepping, \$45.00; No. 2, \$40.00; B.C. fir, flat grain, No. 1, \$37.00; No. 2 do., \$32.50; B.C. finishing up to 12 in., \$37.50; do., over 12 inch, \$42.50. \$5 per M advance on 2 1/2 inch and thicker. One inch—White pine, 1st and 2nd clear, \$55.00, 3rd clear, \$48.00, selects, B, \$38.00, selects, C, \$30.00; red pine, clear, \$40.00, selects, \$30.00; B.C. cedar, clear, \$50.00. B.C. fir finishing, \$37.50; do. over 12 inch, \$42.50.

Oak—Red and White—1 saved, \$85.00; 1st and 2nd, 55.00 to \$65.00; common, \$40.00.

Mouldings and Base—Parting strips, 100 feet lineal, 60c; lattice, 4x1 1/2, 100 feet lineal, 75c, 4x1 1/2, 100 feet lineal, 85c; window and door stop, 1 1/2 inch lineal, \$1.25, ditto, 2 inch lineal, \$1.50; 1/2 round and 1/4 cove, 75c; 1 1/2 inch mould, \$1.50; 2 inch mould, \$1.75; 2 1/2 inch mould, \$2.00; 3 inch mould, \$2.25; 3 1/2 inch mould, \$2.50; 4 inch mould, \$2.75; 4 1/2 inch mould, \$3.00; 5 inch mould, \$3.25; 6 inch mould, \$4.00; 5 inch window stool, 1 1/2 \$4.50; 6 inch window stool, 1 1/2, \$5.25; 4 inch casings, \$2.25; 5 inch casings, \$2.75; 6 inch casings, \$3.25; 8 inch base, \$4.25; 10 inch base, \$5.00; 12 inch base, \$7.00; hand rail, 2x4, \$5.50; wainscot cap, 2 1/2 inch, \$2.35, 3 inch, \$2.75; paper mould, 60c. Moulding made from 1 1/2 stock add 25 per cent; 1 1/2 add 50 per cent. Hardwood mouldings or mouldings to detail at special prices. All shop work at special net prices.



BOVRIL

Is a condensed beef preparation in which ALL NUTRIMENT IS PRESERVED and from which ALL NON-NUTRITIOUS MATTER IS EXTRACTED. It is the acme of MINIMUM IN BULK and MAXIMUM IN STRENGTH-PRODUCING, and is

**ALWAYS READY
FOR USE.**

A cup of boiling water and a teaspoonful of the preparation makes a delicious invigorating beverage in a few seconds. It is indispensable in a KLONDYKE OUTFIT and to prospectors and explorers generally.

BOVRIL

LIMITED

LONDON, ENGLAND

Canadian House, 27 St. Peter St., Montreal.

NORTHWESTERN AGENT:

W. L. MCKENZIE,

WINNIPEG, MAN.

THE KILGOUR, RIMER CO. LTD.

The Leading Jobbers of Shoes in the West.

We are Selling Agents for

MAPLE LEAF RUBBERS, Toronto

JNO. McPHERSON CO., Hamilton

STRATFORD CARDIGANS, Stratford

UNION SHOE AND LEATHER CO., Winnipeg

We carry an immense stock of all the above makes for sorting trade. Also all the leading staples and fine goods of Eastern manufacture. A trial order will convince you we are right in line. Our travellers are now out and will call soon. Letter orders filled same day as received.

WHOLESALE
BOOTS, SHOES and
RUBBERS

The Kilgour, Rimer Co. Ltd.

WINNIPEG

FANCY GOODS, DOLLS AND TOYS

IN ASSORTED CASES

We invite all DEALERS who cannot see our Samples either on the road or in our Sample Rooms, to send in their orders for ASSORTED CASES from \$20 upwards. All such orders will receive PROMPT AND CAREFUL ATTENTION. 5% discount for cash. Order EARLY, so as to allow time to repeat if necessary. Largest Assortments. Biggest Stocks and Right Prices.

The H. A. Nelson & Sons Co., Limited

Ontario Sample Rooms
56 and 58 Front St. West, Toronto

59 to 63 St. Peter St., Montreal



TRY IT IN YOUR COFFEE

Better than fresh Milk and equal to Cream
A boon to the Miner and Camper

Wm. Ferguson
WHOLESALE

Wines, Liquors and Cigars
8th ST., BRANDON

THOS. M. BEE

Dealer in

FARM PRODUCE
PHEASANT FORKS, ASSINIBOIA

We receive large quantities of Butter, Eggs, etc. for shipment. Correspondence requested from western buyers. Orders will be given careful attention.

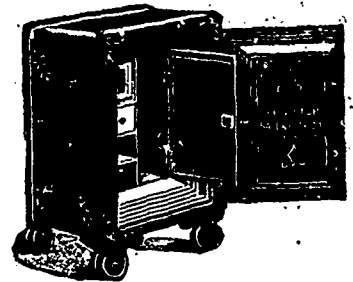


A VAPOR BATH

Turkish and vapor baths at home. Open up the pores and sweat disease out of the system. For all skin troubles, rheumatism, etc., it is the recognized treatment. For the healthy, refreshing and invigorating.

John F. Howard & Co.
Chemists and Druggists

Opposite Post Office, Winnipeg.



VICTOR SAFES

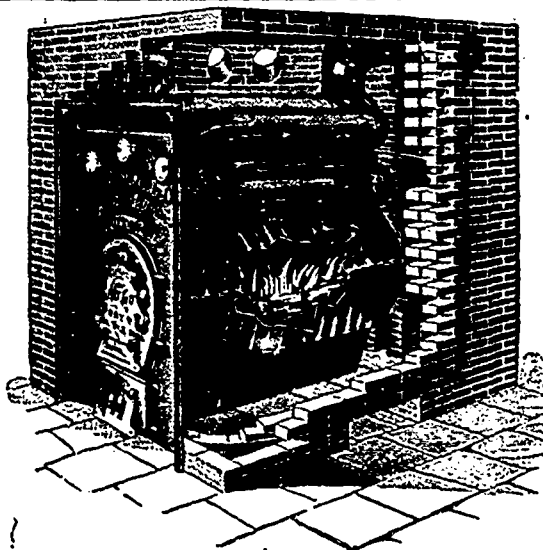
FIRE PROOF AND
BURGLAR PROOF SAFES

Price \$15.00 and Upwards
Call and see them.

KARL K. ALBERT

Western Agent

148 Princess Street, WINNIPEG



SURPRISING RESULTS

Are obtained by users of

GURNEY'S NEW IDEA FURNACE

Gurney's New Idea Furnaces are so recognized and endorsed everywhere, because they are the best. Our dealers have never had to take out one of these Furnaces and substitute another make. They always work and always give satisfaction.

If your nearest dealer has not a sample Furnace in stock, and cannot show from our catalogue, write us direct, and we will send you full information how to heat your home.

THE GURNEY STOVE & RANGE CO., Limited

OFFICE AND WAREHOUSE: RUPERT STREET

WINNIPEG, MAN

1898—FALL SEASON—1898

English, Scotch and Canadian Woolens

DIRECT FROM BEST MAKERS

Tailors' Trimings for Fine Trade.
Livery and Uniform Cloths.

Fabrics suitable for Ladies' Tailor-made Garments
Sole Wholesale Agents for Oxford Famous Tweeds, N. S.

HUTCHISON, NISBET & AULD, TORONTO, ONT.

COUNTRY MERCHANTS

When in need of Hams, Lard, Bacon, Sausage or Bologna Casings, Sausage Spice, Saltpetre, Preservaline, Salt in Barrels, Skewers, Butchers' Paper, Knives, Block Brushes, Block Scrapers, Hog Scrapers and Saw Blades, write us for quotations. We pay highest market price for LIVE POULTRY.

Write our KEEWATIN BRANCH when you have first-class
BUTTER and FRESH EGGS for sale

Butchers, Pork Packers
and Cattle Dealers

P. GALLAGHER & SONS
WINNIPEG, MAN.

THE BOLE DRUG CO.

We beg to advise the trade that we are now prepared to execute orders for

DRUGS, PATENT MEDICINES AND SUNDRIES

Our entire stock is new and fresh, and as we paid spot cash for all our purchases, we were able to command the best markets; we hope in turn to interest the best buyers.

The Drug and Chemical Department of our business will have special attention. We have bought from the most reliable sources, and we feel sure the trade will find perfect satisfaction in these lines.

We have stocked a full range of Parke Davis & Co's Fluid Extracts, Elixirs, Syrups, Pills, Triturates, Specialties and Pressed Herbs.

Our stock of Canadian and American Sundries is now in and includes many novel and striking features. Our English, French and German Sundries expected to arrive shortly.

Our Patent Medicine Department is complete with all the Popular Proprietary Medicines. We beg respectfully to solicit a share of the Drug Trade of the City and Country.

WHOLESALE
DRUGGISTS

The Bole Drug Company
128 Princess Street, Winnipeg

THE BUSINESS SITUATION

Winnipeg, Saturday, July 23.

After the Exhibition rush last week matters have seemed somewhat quiet in the city this week, though a satisfactory trade for the season is doing in most branches of trade. Bank clearings at Winnipeg this week were \$1,475,942, compared with \$1,339,930 last year, and \$1,097,338 two years ago.

WINNIPEG MARKETS

Winnipeg, Saturday, July 23

FISH.

Prices have tended higher for fresh native lake fish, whitefish and pickerel being firmer. Salmon is now selling lower than former quotations. The variety of fresh fish in the market has narrowed down somewhat.

FUEL.

Wood fuel is held firmer with only a moderate business doing. There is an easier tendency in coal. There is no business doing at present, but indications point to lower prices for next season in anthracite coal. The Souris mines are now being put into shape for beginning mining for the fall trade.

GROceries.

Later advices from California confirm previous reports of a great shortage of the apricot crop and prices will be high. The present idea at the coast is 8 to 8 1-2c in sacks and 1-2c higher in boxes for the new crop, which is equal to 12 1-4 to 12 1-2c for boxes laid down here. This shows a sharp advance over last season's prices. There is quite a quantity of old stock held here yet, which is showing good quality, consequently importers are not taking hold of the new fruit at the high prices quoted. Other California fruits are said to be plentiful except pears, which latter have not been reported on yet. In domestic canned goods the situation has been sharply altered by hot, dry weather, which is said to have greatly curtailed the expected crop of some lines. Raspberries have suffered most severely, and it is said this fruit has dried up on the bushes, just as the pack was starting. It is said that packers will not be able to deliver more than 15 to 20 per cent of their sales of raspberries. Large sales of new raspberries were made in this market for future delivery at very low prices, the agent of one packer having set the pace at 90c, which is a very low figure. If the destruction of the crop by drouth is true as reported, there is likely to be trouble over the delivery of goods at the low prices quoted, and some one may get hurt. At present the situation is irregular and uncertain, and some packers have instructed their agents to withdraw quotations on some lines, notably tomatoes and corn. Peas for future delivery have been booked as low as 55c. British Columbia packers show a disposition to hold off from quoting prices for salmon. One alarming report was telegraphed from Vancouver the other day, to the effect that the fish were not running in any numbers and there would not be half a pack. This, however, need not be taken literally. The fish have time yet to appear in large numbers, and if the run does not set in until late in the season no doubt the government will be in-

duced to extend the close season to enable canners to make a fair pack. One packer writes that he does not want to sell now, as prices will not go lower, and if the pack is light, they will go higher. Clover leaf was quoted \$3.65 f.o.b. coast. A large shipment of Japan rice has arrived, which has relieved the local scarcity for that article.

GREEN FRUITS.

Oranges are unchanged. Lemons firm. There are a few Messinas in the market, but California stock is mainly moving. Bananas have continued scarce, and prices are firm. Some came in, but only about enough to clean up accumulated orders, and the market is again about bare of stock, with no more expected for a few days. Strawberries are done. Cherries are going out of season. Recent shipments have been soft and out of condition. Pineapples are out. Melons so far received have been mostly small sizes. Some better stock is now arriving. Blueberries have begun to come in freely, and the price has dropped to 6 1-2 to 7c. Apricots are now out of season. A few are still held in cold storage, but they are practically done. Some Georgia peaches were offered this week, in six basket crates, but arrived in soft condition. Local fruits, such as blueberries, currants, etc., are offering to some extent on the market. Prices are: Oranges, California Mediterranean sweets, \$3.75 to \$4.50 a box; late Valencias, \$4.50 to \$5 box; St. Michael oranges, \$4 to \$4.50; bananas, a bunch, \$2.50 to \$3 as to size; California lemons, \$6.00 per box; pie plant, \$1 per 100 lbs.; tomatoes, \$1.40 per crate of four baskets; Oregon cherries, \$1.25 per ten pound gross box; apricots, \$1.50 per box; California peaches, \$1.50 per box; California plums, \$1.75 to \$2 per box, as to quality and variety; California pears, \$4 to \$4.25 per box; blueberries, 6 1-2 to 7c per pound; water melons, \$1.00 per dozen; coconuts, \$1 per dozen; Selly filberts, large, 11c to 12c per pound; Grenoble walnuts 14c; figs, eleme 14 lb. boxes \$1.50; 20 lb. boxes \$2.50; 1 lb. boxes per doz. \$1.75; dates 6c per lb.; Tarragona almonds 12 1-2 to 13c; peanuts, green, 9c; peanuts, roasted, 12c; pecans, 14 to 15c; strained honey, 7 1-2 to 10c per lb; maple sugar 11 to 12c; syrup per dozen 1-2 gallon tins, \$6 50; apple cider 35c per gal. in barrels and half barrels.

HARDWARE AND PAINTS.

An announcement of an advance of 5 per cent on stoves has been made by the local trade, a circular to that effect having been sent out, signed by all the local jobbers. This was expected. One of the strongest lines in the market is glass. Our reports from Montreal and Toronto for the past few weeks have referred to the strong and upward tendency in glass, but so far no advance has been made in the local market. This market, however, is very strong on this line. Paris green is in active demand here, owing to the appearance of bugs on the potato crop. Paris green is mainly used for this purpose, and as potato bugs have not been destructive in Manitoba, the article has not had much sale here. This season, however, the demand has largely increased. One local house that has been carrying a stock of paris green over for three years, has about sold out the supply this year, and at a fair profit, as prices are firm this season at moderately high values.

TANNING.

Prices are somewhat irregular in the city. A new list was prepared some time ago, advancing Winnipeg prices to meet the advance made at the mills, but it has not been formally agreed to by the dealers here, and it is uncertain whether or not this list is being strictly observed.

LEATHER AND BOOTS AND SHOES.

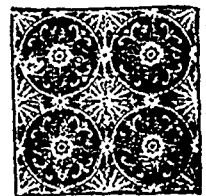
The market for leather is very strong. Hides have been held high for some time, and tanners east have limited their output as much as possible without reducing prices of hides. It is now said stocks of leather are very low, and it certainly looks as though the market may advance, as manufacturers will have to buy freely soon for the fall trade. Shoe manufacturers, it is said, have been holding down production, but a large fall trade is expected at firm prices.

GRAIN AND PRODUCE.

WHEAT — Although prices for future delivery in the wheat markets of the world close almost the same yesterday as a week ago, a slight advance has to be recorded in cash wheat, and interest in the trade is evidently reviving. On Tuesday and Wednesday this was especially shown by an increase of activity in the United States markets, with consequent advances of from one to two cents per bushel. The advance has been allowed for the most part to slip away, evidently for want of sufficient speculative demand to hold it. While this is so, reserves of wheat continue to decline. The tendency to withhold the new crop from market in the winter wheat districts of the United States is becoming more pronounced, and the receipts at primary points there are much less in quantity than at the same time last year, although this year the harvest was earlier and the yield larger. In England and Western Europe the crop is much delayed by backward weather.

Better
Decide

To be up-to-
date, and use
our . . .



METALLIC CEILINGS

AND WALLS

They are used all over Canada in every style of building—because they give the very best economical satisfaction.

Handsome, durable, fire proof and hygienic, and easily applied—just what will please you.

If you like an estimate, send us an outline showing shape and measurements of the walls and ceilings to be covered.

METALLIC ROOFING CO., Limited

1195 King Street West, Toronto.

THOS. BLACK, Winnipeg Agent.

GENUINE
OAK BELTING

LEATHER BELTING, LANCASHIRE HAIR
ENGLISH CARD CLOTHING

Head Office and Factory
Victoria Square, MONTREAL

D. K. McLAREN

Stock Depots—OTTAWA, GALT

A 500,000.00
Guarantee

Silver plated knives, forks and spoons bearing this mark **W. ROGERS** are warranted to be the best of silverplate and to last as long as silver plated ware can last.

SIMPSON, HALL, MILLER & CO
Wallingford, Conn., U.S.A.
and Montreal, Canada

whose trade mark it is for this class of goods, place their surplus of over \$500,000.00 behind this guarantee.

It's worth the consideration of purchasers of plate.

W. H. MALKIN & CO.

VANCOUVER, B. C.

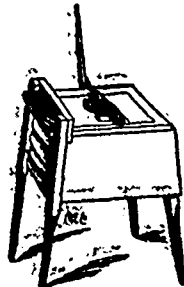
Dealers in

BUTTER, CHEESE, EGGS

Choice California and Local Fruits

OUR SPECIALTY—Consignments of produce from Manitoba and Northwest Territories. Prompt returns made on the 15th of each month

TRY US.



THE McCROSSAN WASHERS

THE PEARLESS WASHER is of the tub family, and there are no better of its class in the market to-day. Cleans well and very easy to work. Given out on trial.

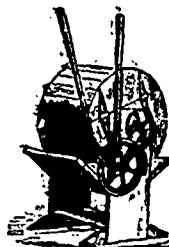
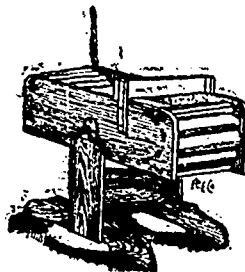
Price \$4.00

There never was a better Washer to clean dirty clothes than the

McCROSSAN ROCKER

I defy the world to produce a better. Is very easy to work

Price \$5.00.



The IMPROVED MANITOBA is of the Rotary System, and in use in all Steam Laundries in the United States and Canada. Taken all round this is my best Washer. It is very easy to work, cleans well, no wear on the clothes, less soap and water is used than if washed by hand. Over three thousand now in use, and recommended by the thousands who use them. Price \$10, \$12, \$14 and \$16.

Merchants requested to order direct from the factory, as we have discontinued selling through jobbers.

THOS. McCROSSAN

Factory, 356 Bannatyne St., WINNIPEG, MAN.

J. & A. CLEARHUE

COMMISSION MERCHANTS

DEALERS IN

Fruits and all kinds of Produce

Special attention to consignments of Furs and Skins, Butter and Eggs . . .

YATES STREET, VICTORIA, B. C.

P. O. BOX 536.

Agents for D. Richards, Laundry Soaps, Woodstock, Ontario. We have a large cool warehouse with good facilities for handling butter and produce in quantities. Consignments received in all lines. Correspondence solicited.

DOMINION
PURCHASING AGENCY

Readers requiring to purchase Goods of any kind—Dry Goods, Carpets, Groceries, Shoes, Hats, Furs, Hardware, Jewellery, Crockery or Glassware, Furniture, Stoves, Bicycles, Sewing Machines, Organs, Pianos and Musical Merchandise generally, or in brief any articles manufactured or dealt in by wholesale or retail, or departmental merchants at home or abroad—can have special terms by addressing

The Dominion Purchasing Agency

Saturday Night Buildings

TORONTO

N.B.—Samples, if not too heavy, will be sent to intending purchasers. Correspondence invited. Reference may be had to The Commercial.

Wholesale and
GARDS.
INVOICES
NOTE & LETTERHEADS
CERTIFICATES & STOCK
ETC. ETC.
HALF-TONES
OUTLINE
ENGRAVING
GIVE US A CALL
PRINTERS
LITHO
ENGRAVING CO.
WINNIPEG.

The P. L. E. Co. have moved to 203 McDermot Ave., Winnipeg

Duncan G. McBean & Co

Brokerage and Commission Merchants

ROOM 5, GRAIN EXCHANGE BUILDING

WINNIPEG, MANITOBA

Grain and all kinds of country produce handled

and harvest is going to be late, which leaves a longer gap, for consumptive demands, to be filled in by imports from other countries. All this should lead to revival in demand, and appreciation in price of wheat for delivery later on.

The same quietness as previously reported, has characterized the trade in Manitoba wheat. If anything, more wheat has been offering for sale this week, but as yet not enough to break values below previous quotations, and the prices remain steady at 94c per bushel for No. 1 hard in store Fort William, with 2 hard 2c less. One or two small sales have been made at 94 1-2c, which seems to have been the top price arrived at so far as reported to us. These prices compare well with the Duluth quotation for 1 hard, which remains at 86c for July delivery, and is about the current value for export to Europe.

FLOUR—The market is steady at the same quotations as a week ago. We quote \$2.55 for patent, \$2.35 for strong bakers, \$1.85 for second bakers, and \$1.25 for XXXX.

MILLFEED—The demand keeps good. We quote bran at \$11 and shorts \$13 per ton in bulk. Large lots 50c. ton less.

GROUND FEED—Ground feed is quoted at \$28 to \$31 per ton as to quality for oats. Ground corn is held at \$18 to \$19 per ton. A mixed corn feed is quoted at \$23 to \$24 per ton.

CORN—Corn has been firmer in markets south for the past two weeks. Car lots on track, Winnipeg are quoted at 43c per bushel of 56 lbs.

BARLEY—Nominal at 45 to 50c per bushel of 48 lbs.

OATS—There is no local demand for oats. The consumption is light, as corn is being largely used. City dealers are holding enough oats to put them through until the new oats came in at the present rate of demand, consequently there is no demand here. The price is nominal at 35 to 36c per bushel of 34 lbs., and a few cars pushed on the market would break prices. Farmers will probably have to buy some oats for feed when harvest work begins, and this may lead to an increased demand soon. Any one having oats in the country had better hold them there in preference to shipping here. If they are wanted they will bring a better price in the country, where they can be shipped direct to any point where they may be required. To ship them in here would only add freight charges. One car was sold here to go to a country point at 45c.

CEREALS—Several carloads oatmeal have come in recently from the States, at considerably lower prices than were quoted a short time ago. Cars of rolled have sold on track here at \$1.60 for 80-lb sacks, with re-sales in broken lots at \$1.80. Cornmeal is selling in small lots at \$1.40 per 98 lbs. in two 1-2 sacks.

BUTTER—Creamery—The market is about the same as a week ago. Dealers are offering 18c at the factories for late June and July goods, but many of the factories seem inclined to hold. While this is the case, advices from both the east and west are unfavorable. Eastern markets have been reported easy, and some very weak advices have been received from British Columbia coast markets within the last two or three days, in private telegrams, one telegram yesterday reporting the market about 1c lower

for butter and 1 to 2c lower for cheese.

BUTTER—Dairy—There is no change in the prices since last week. Buyers have paid 10 to 11c at country points for fresh dairy, and we have heard of as high as 12c having been paid for choice lots, but the tendency is easier and buyers are trying not to exceed 11c. The prompt shipment of butter to go into proper storage at the earliest moment, is again urged.

CHEESE—We have heard of some irregularity in the market, one or two lots having been taken at wide prices compared with what is considered actual market value. Buyers are bidding 7c and 7 1-8c is considered the top limit to factories, delivered at Winnipeg. It is said, however, that one good sized lot was taken at 7 1-2c, but this was a catch sale, and 7c is about the market value. British Columbia coast markets have declined further.

EGGS—Much of the receipts this week have come to hand in very bad shape. In some lots almost half the quantity were rejected as bad. Country buyers should ship their receipts daily, if possible, to avoid this great waste. The market is firmer, candled stock is selling at 13 to 14c, as to quality, and dealers are paying 12c net here, which shows an advance of 1-2c per dozen.

CURED MEATS—Lard has been offering at lower prices, and some cutting is reported. Imported meats have a firmer tendency. See quotations on another page.

DRESSED MEATS—The tendency of prices is lower. We quote dressed hogs at 6 1-2 to 7c. Beef is quoted at 5 to 6 1-2c as to quality. Mutton 8c to 9c, as to quality. Dressed lamb pelts off. 11 to 12c. Veal 6 to 8c as to quality. There is a wider range in beef, as grass beef is offering, of varied quality. Some butchers are using grain fed stock yet, but the principal supply is grass beef, which is indifferent quality.

DRESSED POULTRY—Chickens bring 55 to 60c per pair live; spring chickens 25 to 50c per pair as to quality and size; turkeys 10 to 11c per pound live weight; ducks, 65 to 70c per pair; geese, no demand.

VEGETABLES—Old potatoes are lower at 25 to 35c. New potatoes have sold at about \$1.20, with a lower tendency, and we quote \$1 to \$1.25. They are rather poor yet. There are no onions in the market except green bunch stock. Picklers are buying now for packing and they pay 1 1-2c per pound for cauliflower. Cabbage, 30c to 40c per dozen; cauliflower, 30 to 75c per dozen. Green stuff is offered at 12 1-2 for onions, lettuce and radishes; 10c for rhubarb per dozen bunches; carrots and beets, 15c per dozen bunches; celery, 30 to 35c per dozen; green peas, in pod, 2c per pound; cucumbers 75c per dozen.

HIDES—Hides are firm at prices quoted a week ago, and in some cases 8c was paid, but this is not the general price. We quote green hides, No. 1, 7 1-2c; kip, 7 to 7 1-2c; calf 7 to 9c; deacon skins, 15 to 25c each; sheepskins 10 to 15c, lambskins 10 to 20c; horse hides 75c to \$1.75 each; colts, 25c each.

WOOL—We quote 8 to 9c for good unwashed Manitoba fleece.

TALLOW—No. 1, 3 1-2c; No. 2, 2 1-2 to 3c.

SENECA ROOT—Buyers are paying 12 1-2c to 15c, and 16c has been paid in some cases.

HAY—New hay is offering freely and the price has declined to \$5 to \$6 per

ton for car lots of baled. Demand limited.

LIVE STOCK.

CATTLE—Grass cattle are very backward this season. A year ago at this time range cattle were going forward freely for export. This year no range cattle are fit for export yet and shippers say it will be some weeks before they will be fit to ship. The rough weather last spring left cattle in the range country in poor condition, and they have been slow in recovering. In Manitoba domestic cattle improved fast during May and part of June, but since the heavy June rains the grass has been soft and flies have been very bad, the result being that cattle have not improved much for some weeks. In fact they almost went backward for a while during the recent wet weather. A couple of cars of range cattle for the local market—the first of the season—are expected here today. We quote grass cattle for the local market at 3 to 3 1-2c as to quality. The average quality of Manitoba domestic cattle is rather poor and they are not fit for export shipment. Stockers quiet at \$2.50 to \$2.60 for heifers and \$2.75 to \$2.85 for steers.

SHEEP—The tendency is easy. We quote 3 1-2 to 4c off cars here, as to quality, but it would be difficult to get the outside price. Nothing reported this week.

HOGS—The market is steady at 5c for the most desirable hogs, at which price packers are free buyers. We quote choice bacon hogs, weighing 150 to 250 lbs. at 5c per lb.; 250 to 300 lbs., \$4.25 to \$4.75; heavy hogs over 300 lbs., \$3 to \$4, as to quality, live weight.

COWS—There is a fair demand for good milkers at \$30 to \$35 each. The most of the cows offered on the street are runts of heifers or thin, old cows, which bring \$18 per head upward, as to quality.

Minneapolis Markets.

Flour is 15 to 20c lower, millfeed stronger, oats 1c higher, corn 3-4c higher, flax seed 6c higher, compared with a week ago.

Flour—Prices in barrels: First patents, \$4.65 to \$4.80; second patents, \$5.50 to \$4.70.

Millfeed—Shorts in bulk, \$10.50 to \$11.50; bran in bulk, \$8.50 to \$9.50; corn feed, \$12.75 to \$13.25 per ton as to quality.

Corn—Quoted at 30 1-4 for No. 3.

Oats—Oats held at 23 1-2c for No. 3 white.

Barley—Feed quoted at 24 to 25c. Flax seed—97 1-2c per bushel.

Eggs—10 3-4c for strictly fresh, including cases; seconds, 6 to 7c.

Cheese—Choice to fancy, 7 to 9c; fair to good, 5 to 6c.

Butter—Creamery, 14 1-2 to 16 1-2c; seconds, 12 1-2 to 13c; dairy, 12 to 15c for choice to fancy.

Dressed meats—Mutton, 5 to 7c; lambs, 7 to 10c.

Potatoes—New, carlots mixed, 35 to 40c.

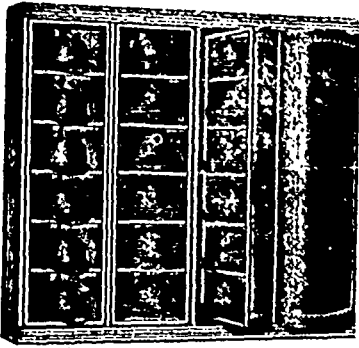
Poultry—Chicken, 4 to 8c; turkeys, 7c; ducks, 6c; geese, 5c; all live weight.

Hides—Green salted hides, 9 3-4c for No. 1; 8 3-4c for No. 2; bulls, oxen and brands, 7 to 8 3-4c; sheepskins, 40 to 85c each; veal calf, 9 1-2 to 11c; tallow, 2 1-2 to 3 1-2c; seneca root, 13 to 20c.

Wool—Unwashed, fine, 10 to 12c; medium, 11 to 13c; coarse, 12 1-2 to 14c.

Hay—\$6 to \$6.50 per ton for timothy; mixed clover, \$5.50 to \$6.50.

A NOVELTY



Patent
Revolving Hat
Cases and
Display Stands

A troublesome
Question
Solved.

Hats can now be effectively displayed and kept free from dust, while space is economized.



Myron McQuide & Co.

Wholesale Furnishers, Selling Agents, Winnipeg

WANTED

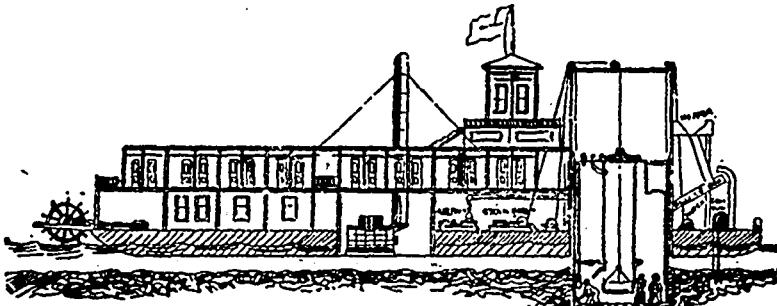
Dealers of the Northwest to know that we are in
ge of the GOVERNMENT COLD STORAGE
WAREHOUSE at Revelstoke, B.C., the gateway of
the Kootenay. We are a British Columbia house.

F. R. STEWART & Co.

Butter, Eggs, Cheese
Hams, Bacon, California Fruits

Head Office and Warehouse, 30 and 32 Water St., Vancouver
Branch Office and Warehouse, 40 Yates Street, Victoria
Representatives at Revelstoke and Nelson, B.C.

THE CAISSON ELEVATOR IN OPERATION Showing Men at Work in Bed of River



This is the new River Gold Mining Machine that has been so favorably noticed. Gold exists in the bed of nearly every river in Yukon; the trouble has been to get it. This innovation enables it to be mined safely, quickly, and to immense profit. One day's output 360 tons; authorities place the value of this at \$30 per ton.

The Northwest River Mining Co., Limited, of Winnipeg, Manitoba, Canada

Has been formed to operate above invention, and it is the intention to have a steamer and outfit on one of the Yukon rivers this fall. Capital \$100,000 in 100,000 shares of \$1 per share.

President—Alfred J. Andrews, Mayor of Winnipeg.

Vice-President—John Arbutnot, Lumber Merchant, Winnipeg.

\$60,000 now offered for sale at par. 50¢ per share payable on application.
Prospectus and full particulars on all points to be had from

JOHN LOVE, Secretary, 41 Princess St., Winnipeg.

Toronto Live Stock Markets.

Special to The Commercial.

Toronto, July 19.

Receipts of live stock of all kinds at the semi-weekly market to-day were 47 carloads, including 160 sheep and 800 hogs.

Export cattle—Really choice touched \$4.80 per cwt. The general run sold at \$4.60 to \$4.70. Medium and bulls 4 to 4 1/2c per lb.

Butchers' cattle—Weather very warm. Good to choice cattle at 4 to 4 1-4c; medium slow, 3 1-2c to 3 3-4c. Some poor were left unsold.

Stockers and feeders—Market easier owing to a slight fall off in the demand for Buffalo. Stockers \$3.20 to \$3.50. Feeders 4c to 4 1-4c.

Sheep and lambs—Sheep easier at 3 to 3 1-4c; for butchers' and export; bucks 2 1-2c; lambs quiet at \$3 to \$3.75 per head.

Hogs—Best bacon hogs advanced 10 to 15c to \$5.65 per cwt., and other kinds were firm. Light \$4.90. Heavy \$5.15 per cwt. Stags \$2 sows \$3.25.

FRIDAY'S MARKETS:

Toronto July 22.

Receipts of live stock to-day were 54 carloads including 900 hogs, and 150 sheep and lambs. Export and butchers' cattle were dull at prices quoted on Tuesday. Hogs were in active demand and firmer for choice per fed bacon hogs at \$5.85, and choice corn fed at \$5.65.

British Cattle Markets.

London, July 16.—Trade to-day in cattle was slower than it has been for the past three weeks, but the undertone to the market for Canadian and American cattle was steady and prices show no change from a week ago, while prices for Argentine show a decline of 1-4c, and sheep 1-2c. Choice States cattle sold 12c; choice Canadian cattle at 11 1-2c; Argentine at 10 1-2c; Argentine sheep at 10 1-2c, and Canadian sheep at 10c.

Liverpool, July 16.—Choice Canadian cattle sold at 11 1-4c, and choice Canadian sheep at 9 1-2c.

Newcastle, July 16.—A private cable received reported sales of Canadian cattle at prices ranging from £16 to £17 5s per head.

The Live Stock Trade.

At Maple Creek, Assn., recently Messrs. Martin and Breckenridge, ranchers, were charged with bringing fifty-two head of horses from Montana while they had entered but thirty head for duty. A fine of \$50 and costs was inflicted, and the whole band of horses have been seized and are held by the police pending the decision of the customs department in the case.

Kobold & Co., Winnipeg, expect two cars of range cattle in from Maple Creek to-day, which will be the first of the season. Range cattle have not come on very fast this season.

The Montreal Gazette of July 23 says: In regard to the sheep trade Glasgow cables received yesterday show no improvement. Canadian stock were sold at an average price of 28s 6d each, which shippers say will lose them fully \$2 per head.

Liverpool Markets.

Liverpool, July 22.—12.30 p.m.—Wheat—Spot steady. No. 1 California 6s 11d to 6s 11 1-2d; No. 2 red western winter 6s 8 1-2d; No. 1 red northern spring 6s 8 1-2d. Corn—Spot quiet. American mixed 3s 1 3-4d.

Close—Corn—Steady; Sept. 3s 3 1-8d; Oct. steady 3s 4 1-8d.

New York Wheat.

New York, July 18.—Wheat receipts, 7,400 bushels; exports 145,375 bushels; options opened easy under foreign selling. A rally with corn was followed by afternoon dullness and a downward tendency inspired by weak French cables. July closed 7-8 upon strong in spot wheat, but other months were 1-8 to 3-4 net lower. July, 82 to 83, closed 82 1-2; Sept. 72 3-16 to 72 5-8, closed 72 1-4; Dec. 72 to 72 3-8, closed 72 1-8.

New York, July 19.—Wheat receipts 47,000 bushels; exports 157,528 bushels. Options had a steady opening on cables and experienced decided strength in the afternoon through covering, based on less favorable spring wheat news and a heavy decrease in Bradstreet's visible. Closed 1-4 to 1 1-4 net higher, late deliveries strong; July 82 1-4 to 82 3-4, closed 82 3-4; Sept. 72 1-2 to 73 5-8, closed 73 5-8; Dec. 72 1-8 to 73 1-4, closed 73 1-4.

New York, July 20.—Wheat receipts, 52,725 bushels; exports, 61,327 bushels; Options moderately active all day. At first influenced by bearish French crop estimates and disappointing cables; later rallied on northwestern frost news; finally under realizing eased off, and closed 1-8 to 3-8; not lower. July, 82 3-8 to 82 3-4c, closed, 82 5-8c; Sept., 72 11-16c to 73 5-8c, closed 73 3-8c; Dec., 72 3-8c to 73c, closed 72 3-4c.

New York, July 21.—Wheat—Receipts 81,175 bushels; exports 154,043 bushels. Options opened 1 1-8c to 3-8c easier, but soon recovered on strength of cash and July, which led to covering, but outside speculation that was relied upon, failed to materialize, and the local traders soon became active sellers and caused positive weakness. The discount of 10 to 20 cents between cash price and the remote deliveries checked selling. The market, except for July, closed at a decline of 3-4; No. 2 red July 82 5-8 to 83 3-8c, closed 83; Sept. 72 3-4 to 74 1-16, closed 72 3-4c; Dec. 72 to 72 3-8c, closed 72c.

New York, July 22.—Wheat—Receipts 69,375 bushels; exports 82,835 bushels. Options steady, and after some hesitation advanced, declined under realizing, and closed easy at 1-8 to 5-8c net loss; cables, disappointing receipts and a bulge in corn were the bull features to-day, while speculative apathy and fine spring wheat news induced selling. July opened 82 3-4 to 83, closed 82 3-4; Sept. opened 72 9-16 to 73 1-2, closed 72 5-8; Dec. opened 71 3-8 to 72 1-8, closed 71 3-8.

New York, July 23.—July No. 2 red winter wheat closed at 82 1-8c; September closed at 73, and December option at 71 7-8c.

Chicago Board of Trade Prices

Prices are quoted per bushel of 60 pounds for wheat, bushel of 56 pounds of corn, bushel of 32 pounds of oats, per barrel for mess pork, and per 100 pounds for lard and short rib bacon; flax seed per bushel of 56 pounds.

Chicago, July 18.—The leading futures closed as follows:
Wheat—Dec. 67 3-8.
Corn—July 33 3-8; Sept. 33 5-8 to 33 3-4; Dec. 34 1-8; May 36 3-8.
Oats—July 23 1-4; Sept. 19 5-8; May 22 3-8.
Pork—July \$9.87 1-2; Sept. \$10.02 1-2.
Lard—Sept. \$5.70; Oct. \$5.75.
Ribs—Sept. \$5.75; Oct. \$5.77.

Gold Miners' Supplies

IN TIN AND ENAMELLED WARE
GOLD MINERS' PANS
FOLDING CAMP STOVES
CAMPING OUTFITS, ETC.

Write for Special Catalogue of
Klondyke Supplies.
Stock carried in Winnipeg.

THE THOS. DAVIDSON M'F'G CO., LD.

MONTREAL.

MERRICK, ANDERSON & CO., WINNIPEG.

Agents for Manitoba and N. W. T.

Chicago, July 19.—The leading futures closed as follows:

Wheat—July 75 1-4; Sept. 68 3-8 to 68 1-2; Dec. 68 1-2.
Corn—July 33 1-4; Sept. 33 1-2; Dec. 34; May 36 1-8.
Oats—July 23 1-4; Sept. 19 5-8; May 22 3-8.
Pork—July \$9.72 1-2; Sept. \$9.87 1-2.
Lard—Sept. \$5.62 1-2; Oct. \$5.67 1-2.
Short ribs—Sept. \$5.65; Oct. \$5.70.

Chicago, July 20.—The leading futures closed as follows:

Wheat July, 77 1-4c; Sept., 68 1-4c to 68 3-8c; Dec., 68 3-8c.
Corn, July, 33 1-2c; Sept., 33 1-2c; Dec., 33 7-8c to 34c; May, 36 1-2c to 36 1-4c.
Oats, July, 23 1-4c; Sept., 19 3-4c; May, 22 3-8c to 22 1-2c.
Pork, July, \$9.80; Sept., \$9.95.
Lard, Sept., \$5.65; Oct., \$5.70.
Ribs, receipts, Sept., \$5.70; Oct., \$5.75.

Chicago, July 21.—The leading futures closed as follows:

Wheat—July 78 1-8c; Sept. 67 3-4 to 7-8c; Dec. 6 1-2c.
Corn—July 32 7-8c; Sept. 32 7-8 to 33c; Dec. 33 3-8c; May 35 3-5 to 1-2c.
Oats—July 22 3-4c; Sept. 19 3-4c; May 22 3-8c.
Mess pork—July \$9.72 1-2; Sept. \$9.87 1-2.
Lard—Sept. \$5.60; Oct. \$5.65.
Ribs—Sept. \$5.62 1-2; Oct. \$5.67 1-2.

Chicago, July 22.—The leading futures closed as follows:

Wheat—July 77; Sept. 67 1-2; Dec. 67 1-4.
Corn—July 33 1-4 to 3-8; Sept. 33 1-2; Dec. 33 1-8; May 36.
Oats—July 23 3-8; Sept. 20 1-8 to 20 1-4; May 22 3-4 to 22 5-8.
Pork—July \$9.70;
Lard—Sept. \$5.55; Oct. \$5.60.
Ribs—Sept. \$5.60; Oct. \$5.65.

Chicago, July 23.—September wheat opened at 68c, and ranged from 67 1-2c to 68 1-8c. Closing prices were:
Wheat—July 76 1-4c, Sept. 67 3-4c, Dec. 67 3-8.
Corn—July 34 1-2c, Sept. 34 5-8c.
Oats—July 24c, Sept. 20 5-8c.
Pork—July \$9.85, Sept. \$9.97 1-2.
Lard—July \$5.52 1-2, Sept. \$5.60.
Ribs—July \$5.60, Sept. \$5.65.
Flax seed—Cash 98c, Sept. 93c.

A week ago September option closed at 67 1-4c. A year ago September wheat closed at 72 3-4c.

MINNEAPOLIS WHEAT.

On Saturday, July 23, No. 1 northern wheat closed at 88c for July, 87c for September, and 65 1-2 for December. A week ago July wheat closed at 86 1-2c.

DULUTH WHEAT MARKET.
No. 1 northern wheat at Duluth closes as follows each day of the week:

Monday—July, 85c; Sept., 68 1-4c.
Tuesday—July, 85 1-2c; Sept., 69 1-4c.
Wednesday—July, 85; Sept., 69 3-8c.
Thursday—July, 85 1-2c; Sept., 69 5-8c.
Friday—July, 85c; Sept., 68 1-2c; Dec., 66 1-2c.
Saturday—July 85c; Sept. 68 1-2; Dec. 66 1-2c.
Cash No. 1 hard closed on Saturday at 86c and cash No. 1 northern at 85c.
Last week July wheat closed at 85c.

A year ago September option closed at 72 7-8c. Two years ago September option closed at 58 7-8c, and three years ago at 70 1-8c.

NEW YORK MONEY.

New York, July 22.—Money on call steady at 11-4 to 11-2, last loan 1 1-2 per cent, prime mercantile paper 3 1-2 to 4 per cent; sterling exchange easy at \$4.85 1-4 to 1-2 for demand and at \$4.81 to 1-4 for sixty days; posted rates \$4.85 and \$4.86 1-2; commercial bills \$4.83 to 1-4; silver certificates 59 1-2 to 60 1-4; bar silver 59 3-4; Mexican dollars 46; government bonds strong.

ALBERTA.

Jas. Reilly has taken over the management of the Royal hotel at Calgary, from Reilly & Archer, whose lease has expired.
Mitford emporium, general store, Mitford, is sold out to Alex. Martin.

The fourth series of London colonial wool sales closed July 19. Prices of fine cross breds advanced 5 per cent at the opening and this was maintained. Medium scoured and greasy Merions advanced 7 to 10 per cent. Low crosses unchanged.

Tenders will be received up to July 28 for a church building at Carman, Man.

Mrs. Somer—What delicately constructed things these big steamships are!
Mr. Somer—Why so?
Mrs. Somer—Just think of the breaking of a screw disabling the whole ship.

All men make mistakes some time, but only fools keep on making the same mistake all the time.

TORONTO WHOLESALE TRADE.

Special to The Commercial.

Toronto, July 23.

Dry goods—Sorting trade is still fair; fall buying larger. A number of buyers from the west this week placed liberal orders. Much dress goods ten per cent higher; will be good property when preferential tariff goes into effect on August 1 against foreign countries. It is difficult to get deliveries of Canadian woollen and cotton goods, owing to the rush at the mills. A local house has had to import bleached cotton to meet the demand.

Groceries—More active. Sugars were 1-16c higher on all grades, and selling very freely now at the advance, as the fruit season demand is in full force. Packers have withdrawn, quotations on vegetables, owing to uncertainty of the crop. Old tomatoes are lower, and quoted now at \$1 to \$1.05. Future new tomatoes 5 to 10c higher, at 70c at factories, and peas 70c and corn 65c at factories. Hardware fairly active. Building paper more active. Scrap copper 2c lower; half and half solder, 1-2c dearer; Manila rope is 1-8c and sisal 1 3-8c lower; turpentine lower.

TORONTO GRAIN AND PRODUCE.
Special to The Commercial.

Toronto, July 23.

The grain trade is dull, with very limited export demand. Deliveries of grain are small, and the tendency is to hold back the new winter wheat crop. Quotations are lower on Ontario wheat. Butter dull. Eggs 1-2c higher. Other prices unchanged.

Flour—Manitoba patent, \$5.25; bakers, \$4.85; Ontario straight roller, \$3.85 to \$3.90 for car lots at point of shipment.

Wheat—Ontario red winter wheat, new, 70 to 72c, old, 75c, for cars at country points; No. 1 hard, \$1.01 to \$1.03 Toronto.

Oats—White, 25 1-2c to 26c for cars at country points.

Millfeed—Shorts, \$15.50 to \$16 per ton at country points. Bran \$9 per ton.

Oatmeal—\$4 per barrel for car lots and \$3.90 in bags.

Eggs—11 1-2 to 12c for choice candled.

Butter—Dairy—Tubs, 11 to 13c for choice fresh goods; creamery tubs, 16 to 17c; creamery, bricks, 17c to 18c.

Hides—No. 1 green, 9c; cured, 9 1-2c; sheepskins, 25c to 35c; lambskins, 40c; calfskins 8 to 10c, tallow, 31-2 to 4c.

Wool—Washed fleece, 16c; unwashed, 10 to 10 1-2c.

Dressed hogs—\$6.50 per 100 lbs.

Beans—35c to \$1 per bushel.

MONTREAL GRAIN AND PRODUCE.
Special to The Commercial.

Montreal, July 23.

Oats are firmer, with a fair local demand. Flour is steadier and prices more regular. All brands are now quoted at the inside range reported a week ago, which is equivalent to a decline of 20c per barrel from the outside quotation. Hides have declines 1-2c. Tallow is lower. Butter is dull and British cables report weaker market. Cheese is firmer locally and cables are higher on cheese. Quotations here on cheese are 3-8c to 1-2c higher.

Oats—30 1-2 per bushel for No. 2 white in store and 31 1-2c afloat.

Flour—Manitoba strong bakers \$4.90; Manitoba patents, \$5.30.

Millfeed—Bran, \$12 per ton; shorts, \$14, including sacks.

Oatmeal—Rolled oats, \$1.85 per bag. Hides—No. 1 green city hides, 9c; country hides, 8c; calfskins, 8c to 10c; sheepskins, 25c; lambskins, 35c; tallow, 31-4c.

Eggs—Strictly fresh, 12 to 13c; No. 1 candled, 10 1-2 to 11c; No. 2, 8 1-2 to 9c per dozen.

Butter—Choice dairy, 13 to 14c; western dairy, 12 to 14c.

Butter—Creamery, 16 to 16 1-4c for choice to fancy fresh goods.

Cheese—7 3-4 to 8c for finest Ontario and 7 1-4 to 7 1-2c for Quebec goods.

MONTREAL GROCERY MARKET.

Special to The Commercial.

Montreal, July 23.

Sugar has been advanced 1-16c. Other lines are unchanged.

Quotations are: Granulated sugar, standard 4 3-8c at the refineries; Canadian-German granulated 4 3-16c; yellows 3 9-16 to 4 1-16c; molasses 30 to 31c; syrups, 2 to 2 1-2c as to quality; Valencia raisins 4 3-4 to 5 1-2; Valencia raisins from 4 3-4 to 5 1-2c; Valencia layers, 6 1-2c; currants, 5 1-8 to 6 1-2c, as to brand; coffee, Rio, 10 to 11c; Mbcha, 22 to 24c; Java, 22 to 24c; rice, Crystal Japan, 5 1-4c, B., 3 3-4c.

Canned goods—Tomatoes, \$1.15 to \$1.20; corn, 80 to 90c; peas, 85 to 95c.

MONTREAL HARDWARE MARKET.

Special to The Commercial.

Montreal, July 23.

No changes in prices in this market this week. Glass is firm at the recent advance. Turpentine easy. Rope easier.

White lead, government standard, \$5.62 1-2; No. 1, \$5.25; dry white lead in kegs, 5c; red lead in kegs, 4 3-4c; linseed oil, raw, 49c; boiled, 52c; turpentine, 44 to 45c; bar iron, \$1.10 to \$1.50; tin plates, cokes, \$2.75 to \$2.90; I. C. charcoal, \$3.25 to \$3.75; Canada plates, \$2.10 to \$2.15; tern plates, \$5.95 to \$6.25; galvanized iron, 4 1-4 to 4 3-4c; lead, \$3.75 to \$4; iron pipe, \$3.90 to \$4, putty in bulk, \$1.65; in bladders, \$1.80; ingot tin, 16 1-2 to 17 1-2c. Cement, English brands, \$2.25 to \$2.35. Germany, \$2.30 to \$2.45, and Belgium, \$1.80 to \$2 per barrel, ex-wharf. Rope, sisal, 11 1-2 to 12c; Manila, 12 3-4 to 13 1-4c; Paris green, pure, 16 1-4c for barrels, 16 1-2c for kegs.

MONTREAL LIVE STOCK PRICES.

Special to The Commercial.

Montreal, July 19.

Receipts at the East End abattoir market yesterday were 500 cattle, 300 sheep and lambs, 100 calves.

A fair demand was reported for ocean space. Rates were quoted at 40s to Liverpool; 27s 6d to 30s to London; 35s to Bristol, and 50s to 52s 6d to Glasgow.

Very warm weather curtailed the demand, and prices were easier for common stock, but unchanged for choice cattle. Choice cattle sold at 4 3-4c to 5c; good, 4c to 4 1-2c; fair at 3 1-4 to 3 3-4c, and common, at 2 1-2c to 3c. Sheep were slow, export 3 to 3 1-4c; culls, 2 1-2 to 2 3-4c. Lambs firm at \$2.50 to \$4 each. Hogs stronger and 15c to 20c higher per 100 lbs., owing to small receipts and good demand from packers. Sales were made at \$5.20 to \$5.40 per 100 lbs.

THURSDAY'S MARKETS.

Special to The Commercial.

Montreal, July 22.

Offerings at the semi-weekly market yesterday were 750 cattle, 1,000

sheep and lambs, and 100 hogs. Cattle were about 1-4c lower. The demand was good, but the large offerings depressed the market. Choice cattle sold at 4 1-2 to 4 3-4c, fair to good, 3 1-2 to 4 1-4c. Sheep and hogs the same as at Monday's market. Lambs \$2.50 to \$4 each.

BRITISH LIVE STOCK.

Special to The Commercial.

Liverpool, July 22.—Cattle 11 to 12c; sheep, 9 to 10c.

CHEESE MARKETS.

Ingersoll, July 19.—Offerings 840 boxes July. No sales; market quiet. June all sold.

Belleville, July 19.—Special—Twenty-three factories boarded 1,470 boxes of white and 110 boxes of colored. The sales were: 205 boxes of white at 7 11-16c; 910 boxes white at 7 3-4c; 75 boxes white at 7 1-2c; 70 boxes white at 7 11-16c.

SUGAR.

London, July 22.—Beet firmer, August 9s 4 1-2d.

CHEESE.

Liverpool, July 22.—Cheese 37s 6d, an advance of 2s on the week.

THE CROPS.

The weather has been irregular this week, varying from moderately warm to cool. Considerable rain in districts followed the hot weather of last week doing much benefit, where it was most needed. A remarkable dip in the temperature occurred very suddenly Tuesday afternoon, and there was a white frost at night in many localities. A frost in July has been an "unknown quantity" in Manitoba heretofore, and we have no experience of previous years as to what effect it will have on the crops. No reports of damage have been received. Further hail storms in the west have been reported, doing damage in limited areas.

Special telegrams to The Commercial to-day, from reliable persons, say no damage was done by frost. Mr. Bedford, of the experimental farm, Brandon, wires: "No injury whatever in this district. Lowest thermometer 35 degrees."

FREIGHT RATES.

Chicago Trade Bulletin: There is a slight cut in grain rates. The tariff on flour and grain from Chicago to New York is 18c per 100 lbs, on corn 17 1-2c. Ocean room is in better demand at 11-2d per bushel for grain from New York to Liverpool. Through rates from Chicago to Liverpool are 10 1-4c per bushel on wheat and 10c on corn. Lake rates from Chicago to Buffalo were steady, with light business at 3-4c on wheat, 3-4c on corn and 3-4c on oats. Corn was taken to Kingston at 15-8c.

WESTERN BUSINESS ITEMS.

Alex. Mitchell is opening in confectionery at Balduf, Man.

S. C. Ranson, implement, Minnesota, Man., is dead.

Geo. Barnes, furniture, Rat Portage, has assigned to A. Carmichael.

P. Gallagher & Sons, one of the oldest and best known firms in Winnipeg dealing in meats, etc., contemplate reaching out more extensively for the jobbing trade in cured meats and butchers' supplies, as will be seen by their announcement on another page.