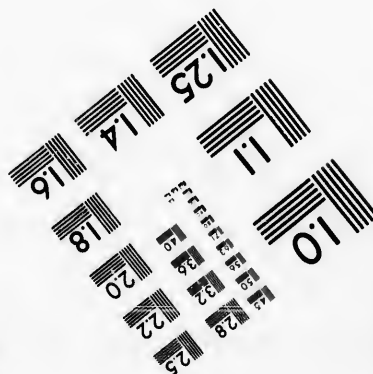
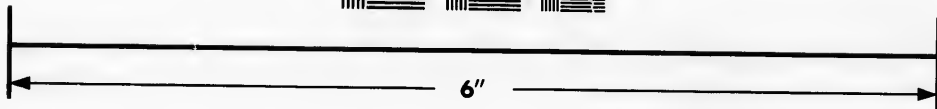
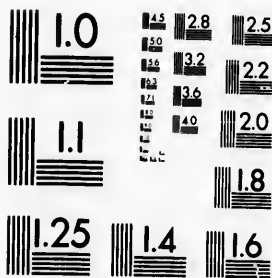


**IMAGE EVALUATION
TEST TARGET (MT-3)**



**Photographic
Sciences
Corporation**

23 WEST MAIN STREET
WEBSTER, N. Y. 14580
(716) 872-4503

0
1.6
1.8
2.0
2.2
2.5
2.8
3.2
3.6
4.0

**CIHM
Microfiche
Series
(Monographs)**

**ICMH
Collection de
microfiches
(monographies)**



Canadian Institute for Historical Microreproductions / Institut canadien de microreproductions historiques

10
11
12
13
14
15
16
17
18
19
20
21
22
23
24
25
26
27
28
29
30
31
32
33
34
35
36
37
38
39
40

© 1993

Technical and Bibliographic Notes / Notes techniques et bibliographiques

The Institute has attempted to obtain the best original copy available for filming. Features of this copy which may be bibliographically unique, which may alter any of the images in the reproduction, or which may significantly change the usual method of filming, are checked below.

L'Institut a microfilmé le meilleur exemplaire qu'il lui a été possible de se procurer. Les détails de cet exemplaire qui sont peut-être uniques du point de vue bibliographique, qui peuvent modifier une image reproduite, ou qui peuvent exiger une modification dans la méthode normale de filmage sont indiqués ci-dessous.

Coloured covers/
Couverture de couleur

Coloured pages/
Pages de couleur

Covers damaged/
Couverture endommagée

Pages damaged/
Pages endommagées

Covers restored and/or laminated/
Couverture restaurée et/ou pelliculée

Pages restored and/or laminated/
Pages restaurées et/ou pelliculées

Cover title missing/
Le titre de couverture manque

Pages discoloured, stained or foxed/
Pages décolorées, tachetées ou piquées

Coloured maps/
Cartes géographiques en couleur

Pages detached/
Pages détachées

Coloured ink (i.e. other than blue or black)/
Encre de couleur (i.e. autre que bleue ou noire)

Showthrough/
Transparence

Coloured plates and/or illustrations/
Planches et/ou illustrations en couleur

Quality of print varies/
Qualité inégale de l'impression

Bound with other material/
Relié avec d'autres documents

Continuous pagination/
Pagination continue

Tight binding may cause shadows or distortion along interior margin/
La reliure serrée peut causer de l'ombre ou de la distorsion le long de la marge intérieure

Includes index(es)/
Comprend un (des) index

Title on header taken from:/
Le titre de l'en-tête provient:

Blank leaves added during restoration may appear within the text. Whenever possible, these have been omitted from filming/
Il se peut que certaines pages blanches ajoutées lors d'une restauration apparaissent dans le texte, mais, lorsque cela était possible, ces pages n'ont pas été filmées.

Title page of issue/
Page de titre de la livraison

Caption of issue/
Titre de départ de la livraison

Masthead/
Générique (périodiques) de la livraison

Additional comments: /
Commentaires supplémentaires:

This item is filmed at the reduction ratio checked below/
Ce document est filmé au taux de réduction indiqué ci-dessous.

10X	14X	18X	22X	26X	30X
<input type="checkbox"/>	<input type="checkbox"/>	<input type="checkbox"/>	<input checked="" type="checkbox"/>	<input type="checkbox"/>	<input type="checkbox"/>
12X	16X	20X	24X	28X	32X

The copy filmed here has been reproduced thanks to the generosity of:

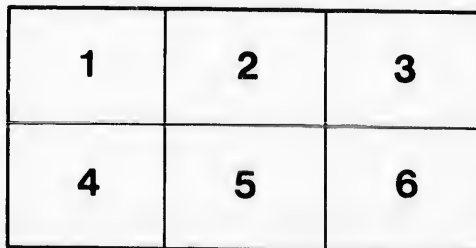
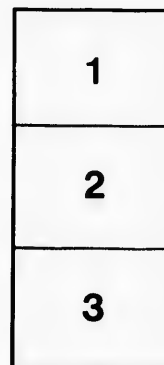
Izaak Walton Killam Memorial Library
Dalhousie University

The images appearing here are the best quality possible considering the condition and legibility of the original copy and in keeping with the filming contract specifications.

Original copies in printed paper covers are filmed beginning with the front cover and ending on the last page with a printed or illustrated impression, or the back cover when appropriate. All other original copies are filmed beginning on the first page with a printed or illustrated impression, and ending on the last page with a printed or illustrated impression.

The last recorded frame on each microfiche shall contain the symbol \rightarrow (meaning "CONTINUED"), or the symbol ∇ (meaning "END"), whichever applies.

Maps, plates, charts, etc., may be filmed at different reduction ratios. Those too large to be entirely included in one exposure are filmed beginning in the upper left hand corner, left to right and top to bottom, as many frames as required. The following diagrams illustrate the method:



L'exemplaire filmé fut reproduit grâce à la générosité de:

Izaak Walton Killam Memorial Library
Dalhousie University

Les images suivantes ont été reproduites avec le plus grand soin, compte tenu de la condition et de la netteté de l'exemplaire filmé, et en conformité avec les conditions du contrat de filmage.

Les exemplaires originaux dont la couverture en papier est imprimée sont filmés en commençant par le premier plat et en terminant soit par la dernière page qui comporte une empreinte d'impression ou d'illustration, soit par le second plat, selon le cas. Tous les autres exemplaires originaux sont filmés en commençant par la première page qui comporte une empreinte d'impression ou d'illustration et en terminant par la dernière page qui comporte une telle empreinte.

Un des symboles suivants apparaîtra sur la dernière image de chaque microfiche, selon le cas: le symbole \rightarrow signifie "A SUIVRE", le symbole ∇ signifie "FIN".

Les cartes, planches, tableaux, etc., peuvent être filmés à des taux de réduction différents. Lorsque le document est trop grand pour être reproduit en un seul cliché, il est filmé à partir de l'angle supérieur gauche, de gauche à droite, et de haut en bas, en prenant le nombre d'images nécessaire. Les diagrammes suivants illustrent la méthode.

u'il
cet
de vue
e
tion
és

oc
ex
we
bo
the
an
nu
ter
cou
I
ger
Go
Co
kn
sion
elat

- 1.
- 2.
- 3.
- 4.

LIST OF THE FISHES OF NOVA SCOTIA.

(Corrected to date, 1879.)

By J. MATTHEW JONES.

THE following list comprises all the Fishes recorded to date as occurring in our waters. A few other fluviatile species doubtless exist in the more remote lakes and streams of the interior, and we may look forward to the occasional occurrence of additional boreal marine forms on our northern fishing banks, brought there under the influence of the cold arctic current which bears annually its burden of icebergs from Davis' Strait; while the number of southern marine forms may also be augmented at intervals, by errant examples, thrown off during their northerly course, along the heated waters of the Gulf Stream.

In the preparation of this list the author has received the generous assistance of his much esteemed friend, Prof. G. BROWN GOODE, of the Smithsonian Institution, Assistant U. States Fish Commission, who has kindly furnished a list of hitherto unknown species, procured from our fishing banks by the Commission during the past three years, and revised in part the nomenclature.

Fam. GASTEROSTEIDÆ.

1. GASTEROSTEUS ACULEATUS, L. Two-spined Stickleback.
Common.

Fam. PERCIDÆ.

2. PERCA FLUVIATILIS, L. Perch. *Perca flavescens*, Stor.
Common in most lakes and streams.
3. ROCCUS LINEATUS (Schn.) Gill. Striped Bass. *Labrax lineatus*, Gunth. Common.
4. MORONE AMERICANA (Gmel.) Gill. White Perch. *Labrax rufus*, Gunth. Common.

Fam. TRIGLIDÆ.

5. SEBASTES MARINUS. (L.) *Lutken*; *S. Norwegicus*. Gunth.
Common; taken on the banks while fishing for cod.
6. COTTUS SCORPIUS, L. Sculpin. Very common.
7. C. OCTODECIM-SPINOSUS, *Mitch*. Not common.
8. CENTRIDERMICHTHYS UNGINATUS, *Reinh*. Fishing banks
off the coast (U. S. F. C.)
9. TRIGLOPS PINGELII, *Reinh*. Fishing banks off the coast,
(U. S. F. C.)
10. ASPIDOPHOROIDES MONOPTERYGIUS, *Bloch., Storer*. Ob-
tained from fish stomachs.

Fam. SCOMBRIDÆ.

11. SCOMBER SCOMBRUS, L. Mackerel. *Scomber scomber*,
Gunth. As on other coasts this fish is more abund-
ant some seasons than others; attributable no doubt
to the ample food supply, or scarcity, as the case
may be. It generally consists of the minute fry of
other fishes; but when that particular food fails,
they appear to resort to the minute crustacea. Dr.
Gilpin carefully describes this species in *Trans. N. S.*
Inst. Nat. Science, vol. I., Pt. 4, p. 11.
12. ORCYNUS THYNNUS (L.) *Goode*. Albicore. *Thynnus*
thynnus, Gunth. Common in the bays and harbours
during the months of July and August.
13. O. ALATUNGA, (L.) *Gill*. *Thynnus alalonga*, Gunth. Ac-
cording to Messrs. Goode & Bean's admirable List of
Fishes of Massachusetts Bay, (1879) a specimen was
obtained by Capt. William Thompson, of the schooner
"Magic" of Gloucester, in the Summer of 1878, on
Banquereau, at a depth of 300 fathoms.
14. SARDA PELAMYS (L.) *Gunth, Cuv*. Bonito. *Pelamys sarda*,
Not common. A young example captured at the
mouth of Halifax Harbour is now in the Museum
collection.
15. ECHENEIS ———? Suck-fish. A specimen in the Hali-
fax Museum not yet determined.

16.

17.

18.

19.

20.

21.

22.

23.

24.

25.

26.

16. PORONOTUS TRIACANTHUS (*Peck.*) *Gill.* *Stromateus triacanthus*, *Gunth.* Common.
17. LAMPRIS LUNA, *Riss.* Very rare. A specimen was taken at Sable Island some years ago, a rough sketch of which, with the colours well depicted, was made by one of the men belonging to the establishment there, and given to Dr. Bernard Gilpin, in whose portfolio I saw it and carefully examined it. Although the sketch was rude in the extreme, the peculiar form and brilliant colours left no doubt as to the fish. The man had never seen one before.

Fam. CARANGIDÆ.

18. PARATRACTUS PISQUETUS (*Cuv. & Val.*) *Gill.* *Caranx chrysos*, *Gunth.* Not uncommon.
19. ARGYRIOSUS VOMER (*L.*) *Cuv. & Val.* Not common. Specimens are occasionally taken in shore waters.
20. POMATOMUS SALTATRIX (*L.*) *Gill.* Blue-fish. *Temnodon saltator*, *Gunth.* Inserted on the authority of Dr. Bernard Gilpin, who has seen specimens taken on this coast.

Fam. XIPHIIDÆ.

21. XIPHIAS GLADIUS, *L.* Sword-fish. Occasionally taken in the bays and harbours.

Fam. DISCOBOLI.

22. CYCLOPTERUS LUMPUS, *L.* Lump-fish. Very common.
23. C. SPINOSUS, *Fabr.* Very rare. Trawled off Halifax Harbour by the "Speedwell" Expedition, August, 1877. (U. S. F. C.)
24. LIPARIS VULGARIS, *Flem.* Common.
25. L. MONTAGUI, *Don.* Rare. Taken off Halifax Harbour by the "Speedwell" Expedition, Aug., 1877. (U.S.F.C.)
26. L. RANULA, *Goode & Bean.* Very rare. One specimen only has been obtained by the "Speedwell" Expedition off Chebucto Head, Halifax Harbor, at a depth of 52 fathoms. (U. S. F. C.)

Fam. PEDICULATI.

27. *LOPHIUS PISCATORIUS*, L. Devil-fish. Common.

Fam. BLENNIDÆ,

28. *ANARRHICHAS LUPUS*, L. Cat-fish. Common.
29. *A. MINOR*, *Olaf*. Fishing banks off the coast (U. S. F. C.)
30. *A. LATIFRONS*. *Steenst & Hallg.* Fishing banks off the coast (U. S. F. C.)
31. *LEPTOCLINUS ACULEATUS* (*Reinh.*) *Gill. Stichæus aculeatus*, *Gunth.* Fishing banks off the coast (U. S. F. C.)
32. *EUMESOGRAMMUS SUBBIFURCATUS* (*Storer*) *Gill. Pholis subbifurcatus*, *Stor.* Taken off Halifax Harbour by the "Speedwell" Expedition (U. S. F. C.)
33. *E. UNIMACULATUS* (*Reinh.*) *Goode & Bean. Stichæus unimaculatus*, *Gunth.* A specimen was forwarded by Mr. Whiteaves from the vicinity of Anticosti to the Smithsonian Institution. See *Goode & Bean's List of Fishes of Mass. Bay.*
34. *MURENOIDES GUNNELLUS* (*L.*) *Goode & Bean.* Common in shore waters. Described by the author, *Trans. N. S. Inst. Nat. Sc. vol. I. Pt. I. p. 50.*
35. *CRYPTACANTHODES MACULATUS*, *Stor.* Wrymouth. Occasionally taken. The variety *C. inornatus*, *Gill*—is not uncommon.
36. *ZOARCES ANGUILLARIS* (*Peck.*) *Storer.* Common.

Fam. ATHERINIDÆ

37. *CHIROSTOMA NOTATUM* (*Mitch.*) *Gill. Atherinichthys notata*, *Gunth.*

Fam. FISTULARIIDÆ

38. *FISTULARIA TABACCARIA*, L. Occasional specimens taken in shore waters during the summer months. A specimen in the Halifax Museum.
39. *F. SERRATA*, *Cuv.* Like the last species this is occasionally taken in shore waters. The author examined a fine specimen 31 inches in length including caudal filament in Sept. 1863, which had been taken at Portu-

40.

41.

42.

43.

44.

45.

46.

47.

48.

49.

50.

51.

guese Cove, Halifax Harbour. A small specimen is in the Halifax Museum. There can be hardly a doubt as to the distinctness of these two species.

Fam. LABRIDÆ.

40. TAUTOGOLABRUS ADSPERSUS (*Walb.*) *Gill.* Sea Perch. *Ctenolabrus burgall*, *Gunth.* Very common during the summer months in harbours and bays. The variety *uninotatus*, having a black spot at the base of the two anterior soft dorsals rays, mentioned by *Gunther*, *Cat. Fishes*, vol. iv., p. 90, is found in company with it.

Fam. LYCODIDÆ.

41. LYCODES VAHLII, *Reinh.* Fishing banks off the coast, (U. S. F. C.)
 42. L. VERRILLII, *Goode & Bean.* Fishing banks off the coast, (U. S. F. C.)
 43. L. PAXILLUS, *Goode & Bean.* A single specimen obtained between La Have and Sable Island Banks, recorded in *Messrs. Goode and Bean's List of N. E. Am. Fishes* (1879) p. 9.

Fam. GADIDÆ.

44. GADUS MORRHUA, *L.* Cod. Very common.
 45. G. TOMCODUS, *Mitch.* Frost-fish. Very common.
 46. G. ÆGLEFINUS, *L.* Haddock. Very common.
 47. G. POLLACHIUS, *L.* Pollack, Very common. Large schools come into Halifax Harbour about the latter end of June or beginning of July, to feed upon the fry of the common hake.
 48. MERLUCIUS BILINEARIS (*Mitch.*) *Gill.* Whiting. *Merluccius vulgaris*, *Gunth.* Not common.
 49. PHYCIS CHUSS (*Walb.*) *Gill.*
 50. P. TENUIS (*Mitch.*) *De Kay.* Hake. *Phycis americanus*, *Gunth.* Very common.
 51. P. REGIUS (*Walb.*) *Jord. & Gill.* *Phycis regalis*, *Gunth.* Sir John Richardson gives Halifax as a locality for this species. *Faun. Bor. Am.*

52. HALOPORPHYRUS VIOLA, *Goode & Bean*. Fishing banks off the coast (U. S. F. C.)
53. ONOS (RHINONEMUS) CIMBRIUS (*L.*) *Goode & Bean*. *Motella cimbria*, *Gunth.* Fishing banks off the coast (U. S. F. C.)
54. BROSMIUS BROSME (*Mull.*) *White*. Cusk. Common.
55. AMMODYTES AMERICANUS, *De Kay*. Sand Eel. Common; burying in the sand at ebb of tide, and going in schools at high water.

Fam. PLEURONECTIDÆ.

56. HIPPOGLOSSUS VULGARIS, *Flem.* Halibut. Very common on the fishing banks off the coast.
57. HIPPOGLOSSOIDES PLATESSOIDES (*Fabr.*) *Gill*. Arctic Flounder. *Hippoglossoides limandooides*, *Gunth.* Not common. Of two specimens forwarded by the Rev. J. Ambrose from St. Margaret's Bay, the largest measured twenty-two inches in length.
58. PSEUDOPLEURONECTES AMERICANUS (*Walb.*) *Gill*. Flounder. *Platessa plana*, *Stor.* Very common in shore waters. Described by the author, *Trans. N. S. Inst. Nat. Sc.*, Vol. I, Pt. I, p. 51.
59. LIMANDA FERRUGINEA (*Storer.*) *Goode & Bean*. *Pleuronectes ferrugineus*, *Gunth.*
60. PLATYSOMATICHTHYS HIPPOGLOSSOIDES (*Walb.*) *Goode & Bean*. Turbot. *Hippoglossus groenlandicus*, *Gunth.* Occasional specimens are brought in from the northern fishing banks, but it is more common off Newfoundland. It is a very oily fish when cooked.
61. GLYPTOCEPHALUS CYNOGLOSSUS (*L.*) *Gill*. *Pleuronectes cynoglossus*, *Gunth.* La Have fishing bank (U.S.F.C.)

Fam. SILURIDÆ.

62. AMIURUS CATUS (*L.*) *Gill*. Not common. This fish is very tenacious of life, for a specimen survived being carried wrapped up in paper in a pocket for two hours.

Fam. SALMONIDÆ.

63. SALMO SALAR, *L.* Salmon. More abundant some years

- than others. Described by Dr. Gilpin, Trans. N. S. Inst. Nat. Sc., Vol. I., Pt. 4, p. 76.
64. *S. CANADENSIS*, *Hamilton Smith*. Sea Trout. Very common at the mouths of rivers, May to August. Dr. Gilpin has described the species, Trans. N. S. Inst. Nat. Sc., Vol. I., Pt. 4, p. 84.
65. *S. GLOVERII*, *Gir.* This fish under the name of "Grayling" is known in most rivers and lakes. It is probably from its light colour that it obtained the name, for it does not belong to the genus *Thymallus*. Described by Dr. Gilpin, Trans. N. S. Inst. Nat. Sc., Vol. I., Pt. 4, p. 86.
66. *CRISTIVOMER NAMAYCUSH* (*Penn.*) *Gill & Jordan*. Lake Trout. *Salmo namaycush*, Gunth. Common in the larger lakes where it is known to the countrymen as the "pickerel." It is well described by Dr. Gilpin in Trans. N. S. Inst. Nat. Sc., Vol. I., Pt. 4, p. 88.
67. *SALVELINUS FONTINALIS* (*Mitch.*) *Gill & Jordan*. Brook Trout. *Salmo fontinalis*, Gunth. Very common in all lakes and streams. Described by Dr. Gilpin, Trans. N. S. Inst. Nat. Sc., Vol. I., Pt. 4, p. 81.
68. *OSMERUS MORDAX*, *Mitch.* Smelt. *Osmerus viridescens*, Gunth. Very abundant in January and February, when they are taken through holes in the ice in great quantities.
69. *MALLOTUS VILLOSUS*, *Cuv. & Val.* Capelin. Occurs as far south as Halifax only occasionally, when the temperature of the shore waters is lower than usual. Its proper habitat is further north, on the coasts of Newfoundland and Labrador. Described by the author, Trans. N. S. Inst. Nat. Sc., Vol. I., Pt. 2, p. 5.

Fam. SCOMBRESOCIDÆ.

70. *SCOMBRESOX SAURUS*, *Flem.* Bill Fish. Not uncommon during the summer months. A specimen preserved in the Halifax Museum jumped out of the water into a fishing-boat. The fishermen say it comes with

the mackerel. We are informed by Mr. Robert Morrow that it is seen on the coast of Cape Breton in schules during the month of August.

71. *EXOCÆTUS* ———? Flying-fish. A specimen was taken at Sable Island in 1859, but the species was not determined.

Fam. CYPRINODONTIDÆ.

72. *FUNDULUS* ——— sp.? Minnow. A species not yet determined; in all lakes and streams.

Fam. CYPRINIDÆ.

73. *CATOSTOMUS TERES* (Mitch.) Les. Sucker. Common in most streams.
74. *ERIMYZON SUCETTA* (Les.) Jordan. *Moxostoma sucetta*, Gunth,

Fam. CLUPEIDÆ.

75. *CLUPEA HARENGUS*, L. Herring. More plentiful some seasons than others. Described by Dr. Gilpin, Trans. N. S. Inst. Nat. Sc., Vol. I., Pt. 1, p. 4.
76. *ALOSA SAPIDISSIMA* (Wilson) Storer. Shad. Abundant on the west coast Bay of Fundy. Described by Dr. Gilpin, Trans. N. S. Inst. Nat. Sc., Vol. I., Pt. 4, p. 107.
77. *POMOLOBUS VERNALIS* (Mitch.) Goode & Bean. Gaspereau. Very abundant.
78. *BREVOORTIA TYRANNUS* (Latrobe) Goode. Menhaden. On the authority of Dr. Gilpin.

Fam. MURÆNIDÆ.

79. *NEMICHTHYS SCOLOPACEUS*, Rich. *Nemichthys scolopacea*, Gunth. Fishing banks off the coast, (U. S. F. C.)
80. *SYNAPHOBRANCHUS PINNATUS* (Gronow) Gunth. Fishing banks off the coast (U. S. F. C.)
81. *ANGUILLA VULGARIS*, L. Eel. Very common.

Fam. SYNGNATHIDÆ.

82. *SYNGNATHUS PECKIANUS*, Storer. Pipe-fish. Common in shore waters.

83.

84.

85.

86.

87.

88.

89.

90.

91.

83. *HIPPOCAMPUS ANTIQUORUM*, *Leach*. Occasionally taken during the summer months; a Gulf-stream migrant no doubt.

Fam. SCLERODERMI.

84. *BALISTES CAPRISCUS*, *Gm.* A specimen taken at St. Margaret's Bay, is in the Halifax Museum.
85. *STEPHANOLEPIS SETIFER*, *Bean*. *Monocanthus setifer*. Gunth. Occasional specimens are taken in shore waters. The Rev. John Ambrose kindly forwarded one to the author about twelve years ago which was secured at St. Margaret's Bay. It is described in *Trans. N. S. Inst. Nat. Sc.*, Vol. I., Pt. 1, p. 53.

Fam. GYMNODONTES.

86. *MOLA ROTUNDA*, *Cuv.* Sun-fish. *Orthogoriscus mola*, Gunth. Rare. A specimen five feet six inches in length taken in Halifax Harbour, October, 1873. Described by Dr. Gilpin, *Trans. N. S. Inst. Nat. Sc.*, Vol. III., p. 343.

Fam. ACIPENSERIDÆ.

87. *ACIPENSER STURIO*, *L.* Sturgeon. Occasionally taken.

Fam. LAMNIDÆ.

88. *ALOPIAS VULPES* (*L.*) *Bon.* *Alopias vulpes*, Gunth. Thresher. Occasionally taken in fishing nets, to their great detriment. A fine specimen in the collection of King's College, Windsor, N. S.
89. *CETORHINUS MAXIMUS* (*L.*) *Blainv.* Basking Shark. *Selache maxima*, Gunth. From descriptions given by different observers we have no doubt as to the occurrence of this species on the coast.

Fam. SPINACIDÆ.

90. *SQUALUS ACANTHIAS*, *L.* Dog-fish. *Acanthias vulgaris*, Gunth. Common on the fishing grounds.
91. *CENTROCYLLIUM FABRICII* (*Rein.*) *Mull. & Henle*. Fishing-banks off the coast (U. S. F. C.)

92. *CENTROSCYMNUS CŒLOLEPIS*, *Bocage & Capello*. Abundant on the fishing banks off the coast (U. S. F. C.)

93. *LÆMARGUS BOREALIS*, *Mull. & Henle*. Greenland Shark.

The only specimen of this rare northern form the author has had the opportunity of examining, was taken off Halifax Harbour in February, 1863, and afforded the following description:—Body fusiform, narrow at the tail. Extent from tip of snout to caudal extreme 11 ft. 3 in. Depth at deepest part, a distance of 1 ft. from posterior branchial aperture, 2 ft. 4 in.; at posterior extreme of first dorsal 1 ft. 10 in.; from posterior extreme of second dorsal $8\frac{1}{2}$ in.; at caudal base, 6 in. Skin covered with osseous tubercles. Snout obtuse, bearing above a series of small mucous pores, extending back 11 inches from snout, over which lay the transparent jelly-like fluid they usually emit. Head; breadth over eyes, 1 ft. 5 in. Eyes, diameter 2 in., bearing no pupillary appendages, and distant from point of snout 11 in., and from temporal orifices, $3\frac{1}{2}$ in. Temporal orifices, situate on a line with upper rim of eye cup, and distant from point of snout 1 ft. 3 in.; extent $1\frac{1}{2}$ in.; width $\frac{3}{4}$ in. Bronchial apertures, five in number, the posterior opening situate at the base of pectorals, and distant from frontal extreme 2 ft. 4 in., is 4 in. long and situate 14 in. from the eyes. Nostrils: situate beneath and distant from snout point, 6 in.; extent, 3 in. Mouth: vertical gape, $8\frac{1}{2}$ in.; horizontal gape, 12 in. Back: carinated from anterior base of first dorsal to an extent of 1 ft. 4 in. forwards. Pectorals commence immediately behind posterior branchial aperture; width at base, 9 in.; extent 1 ft. 4 in. Ventrals commence 3 ft. 6 in. from posterior base of pectorals; width at base, 6 in.; extent, 8 in. First dorsal commences 4 ft. 7 in. from snout point; width at base, 11 in.; extent from anterior base to extremity, 18 in.; from posterior base to summit, $5\frac{1}{2}$ in.;

94.

95.

96.

97.

loose, flapper-like extreme of fin extends 7 in. beyond the posterior base, and lies close upon the back. Second dorsal commences 2 ft. 2 in. from posterior base of first dorsal; height at posterior base, 4 in.; length, 14 in.; width at base, 7 in.; loose flapper-like extreme extends $6\frac{1}{2}$ in. beyond the posterior base, and lies close upon the back, as the first. Caudal commences 12 in. from posterior base of second dorsal; extreme span, 2 ft. 7 in.; upper lobe, extent, 23 in.; lower lobe, $16\frac{1}{2}$ in. Lower lobe commences 3 in. in advance of upper; carinated at base; carinal ridge, two inches from lower surface, and four inches from the upper surface.

Fam. RAIIDÆ.

94. *RAIA RADIATA*, *Don*.
 95. *R. GRANULATA*, *Gill*. M. S. This new species is given in Messrs. Goode & Bean's List of N. E. American Fishes (1879) as occurring on LaHave fishing-bank.
 96. *R. LEVIS*, *Mitch*. Barn-door skate. Dr. Gilpin informs us that this species occurs on the west coast; Bay of Fundy.

Fam. PETROMYZONTIDÆ.

97. *PETROMYZON MARINUS*, *L*. Lamprey. Not uncommon; generally found as a parasite on the gadoids.

