

**CIHM
Microfiche
Series
(Monographs)**

**ICMH
Collection de
microfiches
(monographies)**



Canadian Institute for Historical Microreproductions / Institut canadien de microreproductions historiques

© 1997

Technical and Bibliographic Notes / Notes techniques et bibliographiques

The Institute has attempted to obtain the best original copy available for filming. Features of this copy which may be bibliographically unique, which may alter any of the images in the reproduction, or which may significantly change the usual method of filming are checked below.

- Coloured covers / Couverture de couleur
- Covers damaged / Couverture endommagée
- Covers restored and/or laminated / Couverture restaurée et/ou pelliculée
- Cover title missing / Le titre de couverture manque
- Coloured maps / Cartes géographiques en couleur
- Coloured ink (i.e. other than blue or black) / Encre de couleur (i.e. autre que bleue ou noire)
- Coloured plates and/or illustrations / Planches et/ou illustrations en couleur
- Bound with other material / Relié avec d'autres documents
- Only edition available / Seule édition disponible
- Tight binding may cause shadows or distortion along interior margin / La reliure serrée peut causer de l'ombre ou de la distorsion le long de la marge intérieure.
- Blank leaves added during restorations may appear within the text. Whenever possible, these have been omitted from filming / Il se peut que certaines pages blanches ajoutées lors d'une restauration apparaissent dans le texte, mais, lorsque cela était possible, ces pages n'ont pas été filmées.
- Additional comments / Commentaires supplémentaires:

L'Institut a microfilmé le meilleur exemplaire qu'il lui a été possible de se procurer. Les détails de cet exemplaire qui sont peut-être uniques du point de vue bibliographique, qui peuvent modifier une image reproduite, ou qui peuvent exiger une modification dans la méthode normale de filmage sont indiqués ci-dessous.

- Coloured pages / Pages de couleur
- Pages damaged / Pages endommagées
- Pages restored and/or laminated / Pages restaurées et/ou pelliculées
- Pages discoloured, stained or foxed / Pages décolorées, tachetées ou piquées
- Pages detached / Pages détachées
- Showthrough / Transparence
- Quality of print varies / Qualité inégale de l'impression
- Includes supplementary material / Comprend du matériel supplémentaire
- Pages wholly or partially obscured by errata slips, tissues, etc., have been refilmed to ensure the best possible image / Les pages totalement ou partiellement obscurcies par un feuillet d'errata, une pelure, etc., ont été filmées à nouveau de façon à obtenir la meilleure image possible.
- Opposing pages with varying colouration or discolourations are filmed twice to ensure the best possible image / Les pages s'opposant ayant des colorations variables ou des décolorations sont filmées deux fois afin d'obtenir la meilleure image possible.

This item is filmed at the reduction ratio checked below /
Ce document est filmé au taux de réduction indiqué ci-dessous.

	10x		14x		18x		22x		26x		30x	
	12x		16x		20x		24x		28x		32x	

The copy filmed here has been reproduced thanks to the generosity of:

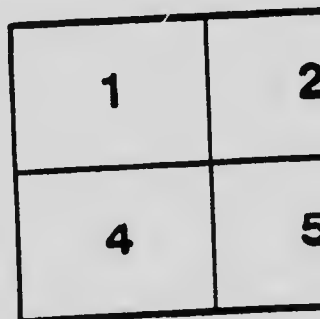
National Library of Canada

The images appearing here are the best quality possible considering the condition and legibility of the original copy and in keeping with the filming contract specifications.

Original copies in printed paper covers are filmed beginning with the front cover and ending on the last page with a printed or illustrated impression, or the back cover when appropriate. All other original copies are filmed beginning on the first page with a printed or illustrated impression, and ending on the last page with a printed or illustrated impression.

The last recorded frame on each microfiche shell contains the symbol \rightarrow (meaning "CONTINUED"), or the symbol ∇ (meaning "END"), whichever applies.

Maps, plates, charts, etc., may be filmed at different reduction ratios. Those too large to be entirely included in one exposure are filmed beginning in the upper left hand corner, left to right and top to bottom, as many frames as required. The following diagrams illustrate the method:



L'exemplaire filmé fut reproduit grâce à la générosité de:

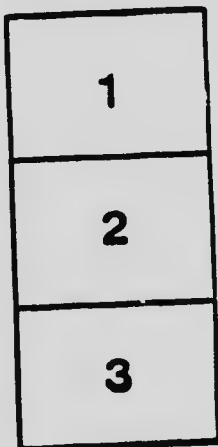
Bibliothèque nationale du Canada

Les images suivantes ont été reproduites avec le plus grand soin, compte tenu de la condition et de la netteté de l'exemplaire filmé, et en conformité avec les conditions du contrat de filmage.

Les exemplaires originaux dont la couverture en papier est imprimée sont filmés en commençant par le premier plat et en terminant soit par la dernière page qui comporte une empreinte d'impression ou d'illustration, soit par le second plat, selon le cas. Tous les autres exemplaires originaux sont filmés en commençant par la première page qui comporte une empreinte d'impression ou d'illustration et en terminant par la dernière page qui comporte une telle empreinte.

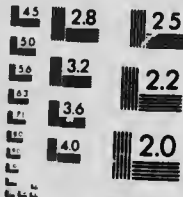
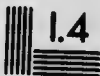
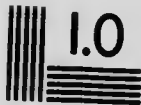
Un des symboles suivants apparaît sur la dernière image de chaque microfiche, selon le cas: le symbole \rightarrow signifie "A SUIVRE", le symbole ∇ signifie "FIN".

Les cartes, planches, tableaux, etc., peuvent être filmés à des taux de réduction différents. Lorsque le document est trop grand pour être reproduit en un seul cliché, il est filmé à partir de l'angle supérieur gauche, de gauche à droite, et de haut en bas, en prenant le nombre d'images nécessaire. Les diagrammes suivants illustrent la méthode.



MICROCOPY RESOLUTION TEST CHART

(ANSI and ISO TEST CHART No. 2)



APPLIED IMAGE Inc

1653 East Main Street
Rochester, New York 14609 USA
(716) 482 - 0300 - Phone
(716) 288 - 5989 - Fax

Exhibition - Regina '19

Provincial Exhibition

Regina, Sask.



OFFICIAL
PRIZE LIST

July 28th to August 2nd
1919

Acc'n No.
344

FC 3546

.15

R35

1919

NATIONAL LIBRARY
CANADA
BIBLIOTHÈQUE NATIONALE

THE WHEAT OF SASKATCHEWAN

Cannot Be Beaten

Robin Hood Flour

The manufactured product of the
best of this Wheat is recognized as
the leading quality flour.



Every Sack Guaranteed

USE

Robin Hood Flour

In All Your Bakings.

License No. 30-2-025

Buy W. S. Stamps

**All letters containing fees should be registered. Please do not send fees in Postage Stamps.
Cheques must be payable at par, Regina.**

To D. T. ELDERKIN, Manager Provincial Exhibition, Regina:

I hereby make the above entries subject to the rules published in the Prix

Entry Fees amounting to \$..... are enclosed herewith.

Signature

P.O. Address
(See Over for Live Stock Entry Form)

Regina Agricultural and Industrial Exhibition Association, Limited

312 McCallum-Hill Building, Regina, Sask.

OFFICERS FOR 1919

PATRON

His Honour the Lieutenant-Governor of Saskatchewan

HONOURARY DIRECTORS

Hon. W. M. Martin, Premier of Saskatchewan.
Hon. T. A. Crerar, Dominion Minister of Agriculture.
Hon. Charles A. Dunning, Provincial Minister of Agriculture.
Mr. H. S. Arkell, Dominion Live Stock Commissioner.
Commissioner A. B. Perry, Regina.
His Worship the Mayor of the City of Regina.

OFFICERS

T. B. Patton, President.
George Kinnon, Vice-President.
D. T. Elderkin, Secretary-Manager

DIRECTORS

F. H. Auld	F. H. O. Harrison	J. A. Mooney
S. Beach	Thos. Heggie	W. R. W. Parsons
J. F. Bole	George Kinnon	T. B. Patton
J. Boyle	H. A. Knight	J. R. Peverett
Dr. J. Burnett	H. C. Lawson	J. G. Robertson
Ald. S. C. Burton	J. F. Lunney	J. F. Robinson
Dr. J. P. Creamer	N. Mackenzie	H. G. Smith
A. B. Cook	P. McAra	J. W. Smith
J. W. Creswell	E. A. McCallum	Robert Sinton
F. N. Darke	N. A. McCannel	W. G. Styles
W. H. Gibson	Alex. Mutch	R. H. Taber
W. M. Graham	L. T. McDonald	W. M. VanValkenburg
Wm. Grant	D. J. McKay	J. A. Wetmore
Ald. J. Grassick	C. E. McQuaid	A. E. Whitmore
R. W. Hamill	Dr. J. W. Mahan	T. Wilkinson
A. Hammond	R. Martin	J. M. Young

FC 3

.15

R35

1919

Provincial Exhibition

REGINA, JULY 28th to AUGUST 2nd, 1919

ASSOCIATE DIRECTORS

A. Beckett, Baring	W. P. Osler, Wolseley
P. G. Bradley, Milestone	A. Peterson, Weyburn
R. M. Crowe, Windthorst	W. J. Phin, Moosomin
R. M. Douglas, Tantalion	W. L. Ramsay, Bladworth
D. B. English, Gray	Geo. Rupp, Lampman
Dr. J. R. Fulcher, Strasbourg	Walter Simpson, Brownlee
E. A. Guillemin, Forget	Dr. Waugh, Imperial
W. C. Heron, Huntoon	W. F. Youngblud, Arcola
H. W. Ketcheson, Davidson	Thos. Boyle, Fillmore
D. Kingsbury, Rouleau	Jack Byers, Valjean
F. A. McGuire, Govan	Chas. Kessler, Pangman
Hugh McKellar, Moose Jaw	W. J. Hyde, Balgonie
D. J. McKillop, Pengarth	Chas. Sherrett, Pense.

STANDING COMMITTEES, 1919

On each Committee the first named is Chairman, the second named is Vice-Chairman. The President, Vice-President and Secretary are ex-officio members of all committees.

Executive—T. B. Patton, G. Kinnon, J. A. Wetmore, E. A. McCallum, P. McAra, Ald. James Grassick, N. Mackenzie, H. C. Lawson, A. B. Cook, J. F. Bole, Robert Sinton.

Accommodation—L. T. McDonald, R. Martin, H. G. Smith.

Advertising—E. A. McCallum, T. B. Patton, E. A. Whitmore, C. E. McQuaid, Ald. C. Burton.

Attractions—W. M. Van Valkenburg, Dr. J. V. Mahan, L. T. McDonald.

Agricultural and Dairy—J. A. Mooney, F. H. O. Harrison, W. Grant, W. M. Graham, F. H. Auld, T. Wilkinson, J. W. Smith.

Automobiles—A. B. Cook, J. F. Robinson, W.R.W. Parsons.

Concessions—J. F. Bole, E. A. McCallum.

Dog Show—N. Mackenzie, J. A. Wetmore, J. Boyle, W.R.W. Parsons.

Farm Boys—F. H. Auld, A. B. Cook, W. H. Gibson.

Fine Arts—W. M. Graham, A. E. Whitmore, N. Mackenzie.

Grand Stand—J. W. Smith, W. M. Van Valkenburg, F. N. Darke.

Horse and Cattle Stables—Thos. Heggie, N. A. McCannel, R. H. Taber, A. Mutch.

Horse and Cattle Judging—H. C. Lawson, G. Kinnon, R. W. Hamill, Dr. J. P. Creamer, Dr. J. Burnett, A. Hammond, Thos. Heggie, J. G. Robertson.

Implements—H. A. Knight, F. N. Darke, N. A. McCannel.

Industrial Exhibits—J. W. Creswell, J. F. Lunney, R. Martin.

Improvements—S. Beach, J. Boyle, D. J. McKay, Ald. J. Grassick, Thos. Heggie, Ald. S. C. Burton.

Midway—Dr. J. W. Mahan, J. F. Robinson.

Main Gate—P. McAra, L. T. McDonald, H. A. Knight.

Public Service—J. A. Wetmore, T. Wilkinson, J. A. Mooney.

Live Stock—H. C. Lawson, G. Kinnon, A. Hammond, R. W. Hamill, Robert Sinton, Alex. Mutch, Dr. J. P. Creamer, Thos. Heggie, W. G. Styles, J. G. Robertson.

Poultry—S. Beach, F. N. Darke, H. C. Lawson, J. F. Lunney.

Races—D. J. McKay, J. W. Creswell, J. F. Lunney, J. Boyle, Dr. J. W. Mahan, Dr. J. Burnett, R. H. Taber.

Reception—H. G. Smith, H. A. Knight, J. A. Wetmore, R. Sinton, A. E. Whitmore, J. F. Bole.

School Exhibits—J. R. Peverett, P. McAra.

Sheep and Swine Exhibits—W. G. Styles, Ald. J. Grassick, F. H. O. Harrison, W. Grant.

Women's Work—J. M. Young, C. E. McQuaid.

The Demand for Lands for Mixed Farming is Daily Increasing

Are you aware that within 15 and 20 miles of Regina lands well adapted for Mixed Farming purposes, can be purchased at from \$16.00 to \$20.00 per acre?

1-10 cash, balance in 9 equal annual payments with interest at 6%.

Have Large List of Wild and Improved Farms For Sale, at Prices and Terms to Suit.

H. H. Campkin

1753 Scarth St.

Phone 5060

Regina, Sask.

Insurance—Fire, Accident, Life, Guarantee.

Loans—Negotiated on Improved Farm and City Property.

Debentures—School and Municipal, Bought and Sold.

Victory Loan—Bonds, Bought and Sold.

Regina Agricultural and Industrial Exhibition Association, Limited

REGINA, SASKATCHEWAN

JULY 28th TO AUGUST 2nd, 1919

T. B. Patton, President.

D. T. Elderkin, Manager

RACING COMMITTEE

D. J. McKay (Chairman), J. W. Creswell, J. F. Lunney, J. Boyle,
Dr. J. W. Mahan, Dr. J. Burnett.

SPECIAL RULES

The entry fee for all harness races is 3 per cent. of the stake or purse.

Entries for early closing events close on May 15th, with payment of 1 per cent. of purse; second and final payment of 2 per cent. due on June 15th, when horses must be named.

Horses entered in early closing events must be eligible on June 15th for races in which they are named.

In case any early closing event fails to fill a similar late closing race will be substituted with a smaller purse. Entries for such late closing event will close on July 12th.

In late closing harness races, six or more to enter and five or more to start.

Harness races will be decided by the old system, 3 in 5.

Running race entries close at 12 o'clock noon the day before the race. An entry fee of \$5.00 will be charged for each entry in the running races with the exception of the Derby, and such entry fee will be refunded to all starters. For the Derby an entry fee of \$10.00 will be charged for each entry and no refund will be made.

There will be no deductions from running purse winners.

The purses in the two running races on the last day of the meet will be divided as follows for each race: 1st, \$75.00; 2nd, \$60.00; 3rd, \$40.00; 4th, \$30.00; 5th, \$25.00; 6th, \$20.00.

Conditions and weights of running races will be made to suit as nearly as possible every horse attending the meeting.

Race Programme

MONDAY, JULY 28TH, 1919

Race No.		Purse
1.	2.24 Pace or 2.19 Trot (Early Closing Event)	\$ 800.00
2.	2.09 Pace (Early Closing Event)	800.00
3.	1 1-16 Miles, Regina Derby (Handicap)	500.00
4.	4½ Furlongs	250.00

TUESDAY, JULY 29TH

5.	2.14 Trot (Early Closing Event)	Purse 800.00
6.	2.12 Pace (Early Closing Event)	Purse 1,000.00
7.	6½ Furlongs	Purse 250.00
8.	5 Furlongs	Purse 250.00

WEDNESDAY, JULY 30TH

9.	2.20 Pace or 2.15 Trot (Early Closing Event)	Purse 800.00
10.	2.24 Trot (Early Closing Event)	Purse 800.00
11.	5 Furlongs	Purse 250.00
12.	7 Furlongs	Purse 250.00

THURSDAY, JULY 31ST

13.	2.17 Pace or 2.12 Trot (Early Closing Event)	Purse 800.00
14.	Free-for-All, Trot or Pace (Early Closing Event)	Purse 800.00
15.	1 Mile, open to non-winners at meet	Purse 250.00
16.	4½ Furlongs, open to non-winners at meet	Purse 250.00

ARE YOU IN NEED OF A LOAN?

We loan money on first mortgages, on improved farm lands at current rate.

Loans promptly negotiated.

Charges reasonable.

We have ample funds on hand and would be glad to have you call and see us.

Correspondence invited.

The Huron and Erie Mortgage Corporation

H. W. GIVINS, Manager

2119 Eleventh Ave.

Regina

WHY MAKE A WILL?

A prudent person gives some heed to that morrow which he will not live to see, and when in good health he makes his will and selects an Executor fitted for the work.

HAVE YOU ATTENDED TO THIS IMPORTANT DUTY?

The requirements of an ideal Executor are—**PERMANENCY, EXPERIENCE, FINANCIAL RESPONSIBILITY, and CAPABILITY.**

The actual returns of many Estates after being placed in our care have been substantially increased because of the business-like Administration and a prompt and proper investment of the Estates' funds.

A consultation on this important matter is invited without cost or obligation on your part.

THE CANADA TRUST COMPANY

2119 Eleventh Avenue (Darke Block)

Regina

H. W. GIVINS, Manager

SPECIAL RAILWAY ARRANGEMENTS FOR EXHIBITS SHIPPED BY FREIGHT.

The special exhibition tariff will be in force for the Regina Agricultural and Industrial Exhibition. This tariff provides for regular tariff rates being charged on exhibits to the show and return free to original shipping point upon certificate from manager that exhibit has not changed hands. Exhibitors who show at more than one Exhibition before returning to the original shipping point may secure a half tariff rate from the first exhibition to each subsequent exhibition and return free from the last exhibition point to the original shipping station.

DOG SHOW

A Special Prize List will be published for the Dog Show to be held in connection with the Exhibition, and a copy of same may be secured on application to the Manager.

The Dog Show will be held with the co-operation of the Regina Kennel Club. Exhibits are expected from all parts of the Prairie Provinces as well as from Quebec, Ontario, British Columbia and the United States.

HEAR SOUSA AND HIS BAND

Furniture of Destinction

:---:

And a range of prices to suit the most modest purse.

When visiting Regina, don't fail to come in and see our superb collection of Furniture of all kinds.

Individual pieces or complete suites, our collection comprises one of the finest assortments to be found anywhere under one roof.

An inspection and comparison of prices will convince you, that you cannot get better service from any source.

This is one of the Show Places of Regina—You see all that is popular and modish in Furniture.

:---:

The Great West Furniture Store

2223 11th Ave.

Opposite Sherman Theatre

Phone 2716

LIST OF DONORS

- Dominion Department of Agriculture, Live Stock Branch—H. S. Arkell, Live Stock Commissioner.
- Saskatchewan Department of Agriculture—Hon. C. A. Dunning, Minister of Agriculture.
- City of Regina—Henry Black, Mayor.
- Saskatchewan Department of Agriculture, Agricultural Societies' Branch—S. E. Greenway, Director.
- Saskatchewan Swine Breeders' Association—J. G. Robertson, Secretary, Regina—\$50.
- Hon. W. R. Motherwell, Regina—Grand Challenge Shield.
- Aberdeen-Angus Cattle Society—Silver Medal.
- American Hereford Breeders' Association, \$600.
- American Percheron Horse Society—1 Silver Trophy, 7 Silver Medals, 6 Bronze Medals.
- Canadian Bank of Commerce, Regina Branch, A. W. Ridout Manager—2 Silver Medals, 1 Bronze Medal.
- Canadian Aberdeen-Angus Association—\$100.
- Canadian Ayrshire Breeders' Association—\$50.
- Canadian Hereford Breeders' Association—\$200.
- Canadian Percheron Horse Society—\$80.
- Canadian Pony Society—2 Silver Medals.
- Clydesdale Horse Association of Canada—\$250.
- Dominion Shorthorn Breeders' Association—\$300.
- Canadian Standard Bred Horse Society—\$100.
- Holstein-Friesian Association of Canada—\$125.
- Imperial Bank, Regina, J. A. Wetmore, Manager—Gold Medal.
- Beaver Lumber Co., Regina—\$15.



AND ADVISE
**SASKATCHEWAN
CO-OPERATIVE
ELEVATOR Co. LTD.
WINNIPEG**

Trackage Connections
C.P.R. and C.N.R.

PROVINCIAL EXHIBITION

Regina, July 28th to August 2nd, 1919

GENERAL RULES AND REGULATIONS

1. The Exhibition will be open to the public on Monday, July 28th, at 9 a.m., and will remain open each day from 7 a.m. until 11 p.m., up to and including Saturday, August 2nd, 1919.
2. Entries at the regular fees in all departments excepting live stock, vegetables and flowers (unless otherwise stated in special rules) close July 11th. Live stock entries close July 17th. Entries for vegetables and flowers close July 23rd. All entries by mail must bear the postmark of the closing date (or earlier) of the Regina post office. Live stock entries received after July 19 may be charged 25 per cent. additional fees. All Live stock entries mailed after July 17th, must be registered. Positively no entries will be accepted that are not in the Secretary's hands on or before Tuesday, July 22nd. The management will not hold themselves responsible for providing live stock stabling for entries received after July 19th.
3. All entries must be on the printed form supplied for that purpose. The particulars called for in the prize lists must be fully supplied, and be written in clear legible writing and properly signed by the exhibitor or his duly authorized agent. Forms can be obtained from the Manager.
4. Live Stock exhibitors may make any number of entries, but will not be permitted to show for prizes more than three horses or three cattle, two sheep or two hogs in any one class for single animals, nor more than one exhibit in any one class for which more than one animal is required to make up the exhibit.
5. The prescribed fee must in all cases be forwarded with the entry. Fees should be sent by money order or in bills in registered letter at the risk of the exhibitor.
6. Great care should be taken to enter each animal in its proper class, as no alterations will be made after entries close.
7. All first prize animals must compete for their respective championships.
8. All animals competing in classes which require more than one animal to make an exhibit, excepting teams and bacon hogs, must have been entered and previously shown in their respective classes for single animals. Whether there is a fee or not, entry must be made in all classes where an exhibitor desires to compete, excepting championships.
9. The following stall fee will be charged. Animals may be shown in all classes for which they are eligible and for which they have been properly entered without the payment of any additional fees. The Directors in charge reserve the right to prevent an exhibitor from

WILLIAM PENN MOTOR OILS

FOR TRACTORS, TRUCKS, AUTOMOBILES

Made of Pennsylvania Stocks—
Admittedly, the Best in the World.

Five weights are required for
WESTERN CANADIAN NEEDS

**EXTRA HEAVY
HEAVY
MEDIUM
LIGHT
COLD TEST**

Correct lubrication is cheaper than repairs.

Make use of our experience.

Our advice costs you nothing.

Call on us for Free Chart covering your requirements.

CONTINENTAL OIL CO. LIMITED

Saskatchewan Branches:—REGINA, SWIFT CURRENT,
WEYBURN, SASKATOON, PRINCE ALBERT.

utilizing too many stalls or pens or from unduly crowding his exhibits and to regulate the use of stalls or pens for other purposes than the accommodation of exhibits. In cases where exhibitors do not state the accommodation required for exhibits, the Directors in charge will allot such stalls or pens as they deem to be sufficient and the exhibitor must be satisfied with such allotment and pay for same. The use of box stalls will be permitted only for brood mares with foals.

Horses, single stalls	\$2.00
Horses, box stalls	4.00
Horses, not stabled on the grounds	1.00
Cattle, single stalls	1.50
Sheep, pen about six feet square	2.50
Swine, pen about six feet square	2.50

10. For exhibits other than live stock the following entry fees will be charged:

Poultry, each pen50
School Exhibits	Free
All other Exhibits, each entry25

11. An entry ticket will be furnished the exhibitor for each entry excepting live stock. This ticket will specify in duplicate the class, section and number of the entry; one-half is to be torn off and retained by the exhibitor, the other half to be attached to such exhibit and so remain during the Exhibition. The duplicate ticket must be produced to secure the return of the exhibit at the close of the Exhibition. The entry tickets will be mailed if there is sufficient time for same to reach exhibitor; if not, they may be obtained from the office on the grounds when the exhibits are brought in.

12. Exhibitors must be careful that entry tickets are securely and conspicuously attached to their exhibits, otherwise the exhibits may not be considered in the awarding of prizes.

13. In horse, cattle, sheep and swine classes the entry must in every instance be made in the name of the actual owner and unless this rule be observed no premium will be awarded or, if awarded, will be withheld. The Directors may require affidavits as to ownership from any exhibitor. In all other classes, entry must be made in the names of the producers or manufacturers and by such producers themselves, in person or their agents, who must have special authority for so doing. Those who are not manufacturers or authorized agents, may exhibit, but they cannot compete for the prizes offered.

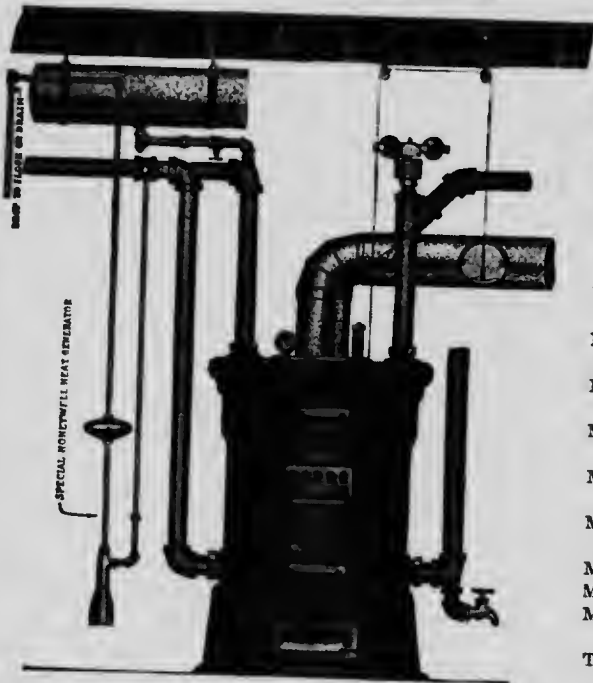
14. Animals to be eligible to compete in the amateur classes must be owned and have been fed for at least two months by a resident of Canada who has never won a first prize, or who was not a member of a firm at the time of the firm winning a first prize in that department (Horse, Cattle, Sheep, or Swine) at any exhibition held in Regina, Saskatoon, Calgary, Edmonton, Brandon, Winnipeg, or Toronto, between January 1, 1913 and December 31, 1917, or, if exhibited by a firm, no member of the firm shall have won a first prize or have been a member of a firm at the time of the firm winning a first prize at exhibitions held in Regina, Saskatoon, Calgary, Edmonton, Brandon, Winnipeg or Toronto, between January 1, 1913, and December 31, 1917. Any person who has lived with or been employed for a term of one year by any of the persons disqualified above will not be entitled to compete unless he has been living independently for at least two years. A

Regina,
Sask.

PITTS BROS.

Phone 5012
1833 Osler St.

Plumbing, Steam and Hot-Water Heating
Contractors



A few of the
numerous plants in-
stalled in the
country:

Mr. Lane,
Grand Coulee
Mr. Fahiman,
Holdfast
Mr. Gordon,
Grand Coulee
Mr. Frolick,
Holdfast
Mr. Goldie,
Grand Coulee
Mr. Shank, J.P.,
Holdfast
Mr. Anhelcher,
Holdfast
Mr. Rayner,
Penzance
Mr. Spencer,
Penzance
Mr. Hungie,
Holdfast
Mr. Wolff, Liberty
Mr. Berg, Penzance
Mr. Ehman,
Penzance
Tantallon Consoli-
dated School

Plumbing Installed in the Country Under
Government Inspection

The Honeywell Tank-in-Basement System is sealed by a column of mercury, a fluid as mobile as water, which cannot stick and cause dangerous pressures, or leak and make trouble as a mechanical valve will do.

The water Regulator does not depend upon the quantity of water in the system or pressure to operate the dampers, the regulator operates entirely upon the temperature of the water and it requires only a degree or two to change the position of the lever which controls the dampers; it has a range of from 100 to 240 degrees—a much broader range than any other method of control.

MR. BUILDER! MR. FARMER! If you are intending to install a Hotwater or Steam Plant, also plumbing in your building, in the City or Country, Call, Phone, or Write, and we will gladly submit you an estimate free of charge.

statutory declaration may be required from each exhibitor competing for amateur prizes that he is entitled to compete under the above regulations.

15. Any exhibitor shall, if required by the Board, make a statutory declaration that the exhibits made by him are shown in accordance with the Rules and Regulations of the Association; in case any exhibitor refuses to make such declaration on being requested, all premiums awarded him shall be forfeited. In classes other than live stock no person shall be allowed to enter for competition more than one specimen in any one section of a class, unless the additional article should be of a distinct variety or pattern from the first.

16. All exhibits must be on the grounds and in place before 9 o'clock on Monday morning, July 28th. No exhibits of any kind may be removed until the close of the Exhibition, except in the fruit, floral or vegetable sections, when such a removal is necessary to a continuous display, and excepting dogs, which may be removed after 10 p.m. Thursday; and live stock and poultry, which will be released after 4 p.m. on Friday.

17. Exhibitors of machinery and other heavy articles are requested to have them on the grounds and placed in position at least two days previous to the opening of the Exhibition.

18. All boxes, wrappings and other packing material must be cleared away and everything in proper order before 9 a.m. Monday, July 28th.

19. All animals must be submitted to veterinary inspection on entering the grounds if required. No animal known to be suffering from a contagious or infectious disease shall be granted admission to the Exhibition grounds, and if any animal has been admitted through an oversight, suffering from any such disease, the exhibitor must immediately remove any such animal from the grounds when ordered to do so by the Management.

20. Articles not accompanied by their owners may be addressed to the Association, who will receive them on their being properly delivered on the Exhibition grounds and place them in their allotted places. Exhibitors arriving with their exhibits will apply at the general office on the grounds when they will be informed where the articles are to be placed.

21. Though the Association will endeavor to take reasonable precaution as to the safety of exhibits sent to the Exhibition, the exhibitor shall assume all risk in connection with his or her exhibits and should any exhibit or portion thereof, be damaged, lost or stolen the Association will give all the assistance in its power for the recovery of the same, but, the exhibitor in making entry relieves the Association of all liability for any loss or damage that may be sustained in any way.

22. All stalls for live stock exhibits will be well bedded before the arrival of stock and afterwards exhibitors will be required to keep their stalls properly bedded. Straw for this purpose will be available on the grounds at a nominal charge of 40c per bale. Hay and Grain will be for sale on the grounds at the prevailing market prices. Exhibitors must secure permission before bringing loose hay or grain sheaves on the grounds.



Willard STORAGE BATTERY
SERVICE STATION

When You're in Doubt---Ask Me

Does your battery need charging?
Does your battery need water?
Do connections need tightening?
Are you sure that your battery is being kept right up to Maximum efficiency?

If you don't know ask me, three minutes' test will tell you what is needed. May add weeks of useful life to your Willard Battery.

Ask while you're here, about the still Better Willard, with Threaded Rubber Insulation.

1822-24
CORNWALL ST.

MOTOR
SUPPLIES LIMITED
REGINA

PHONE
4515

Automobile Accessories

Tires, Tubes, Parts for Ford Cars, Ford Specialties, Amesbuilt Bodies for Ford Cars. We also carry Harness—Come in and see us first.

Everything for the Motorist

SWANSTON AUTO SUPPLIES

1708 Scarth St.

Regina, Sask.

23. The production of animals for parade or other purposes may be ordered at any time during the exhibition by the Director in charge; and an exhibitor or attendant refusing or neglecting to bring such animal out as directed shall forfeit his entry fees and any premiums that may have been awarded him. Every prize winning animal in the Horse and Cattle department must be placed in the grand parade on the race track, Thursday, July 31st, or forfeit the prize money won.
24. All attendants when showing animals in the judging ring must wear coats and it is requested that such attendants be attired in neat brown duck clothing and caps.
25. Judging will commence on Monday, July 28th, at 1.30 p.m.
26. Exhibitors of live stock must ascertain from the Director in charge at what hour judging of the different breeds will take place, therefore no complaint or appeal based upon the statement that the judges have overlooked exhibits will be considered.
27. In all classes where certificates of registration are required, the same must be produced to the Director in charge, when asked for.
28. In the absence of competition in any section, or, if the article or stock exhibited be of inferior quality, the judges shall award only such premiums as they think the article or stock merits. They will exercise their discretion as to whether they will award the first, second or any other premium.
29. The decision of the judges shall be final and no protest or appeal will be entertained except in cases where actual misrepresentation or fraud is alleged.
30. An exhibitor lodging a protest must make it in WRITING. It must be delivered to the Secretary WITHIN 12 HOURS FOLLOWING THE CAUSE OF PROTEST, and a receipt must be obtained. A protest must state plainly the cause of complaint or appeal and must be accompanied by a deposit of \$5, which sum shall be forfeited to the Association if the said protest is not sustained.
31. In any case where a protest is entered for an improper or malicious purpose, the Board of Directors may exclude the party making such protest from exhibiting for one or more years thereafter.
32. No prize colors or cards may be affixed until the awards have been made.
33. All persons may be excluded from the judging rings during the time of judging except the judges or assistants, persons in charge of animals, and Directors of the Association whose duties require their presence in the ring.
34. All prize ribbons or cards which have been awarded must be displayed during the Exhibition.
35. Any person who shall attempt to interfere with or influence the judges while in the discharge of their duties, or who shall at any time, on the premises of the Association, use any contemptuous or abusive language to any judge or within his hearing in consequence of any award made by him, or any exhibitor refusing to accept any award made by a judge, shall forfeit his right to any premiums to which he might otherwise be entitled and may be excluded from exhibiting for one or more years thereafter.

C. J. BROWNE, Manager. PHONE 2933 A. N. KILLER, Sec.-Treas.

ESCO PRODUCTS

ELECTRIC SPECIALTY COMPANY

Motors and Generators new and rebuilt, Rewinding and repairing to Automobile Starting and Lighting Systems, Motors, Generators, Transformers, Magnetos, and all types of Electric Meters, Battery Charging Outfits complete, Machine Work.

We repair EVERYTHING that is electrical, so if you have any trouble in this line bring it to us. We guarantee our work.

Second hand Motors and Generators bought at highest prices.

1805 Cornwall St.

Regina, Sask.

EXECUTORS, ADMINISTRATORS, LIQUIDATORS, ETC.

If you require assistance in handling your estate or any other person's—living or dead

CONSULT US

We are in a position to offer you assistance, financially and otherwise.

Wills Prepared
Consultations
Advice

} FREE OF CHARGE

The Saskatchewan Mortgage & Trust
Corporation, Limited

102 Darke Block. Regina

"Saskatchewan's Oldest Home Trust Company"

36. Upon the discovery of fraud, deception or dishonest practice, either in the preparation of ownership, or of any misrepresentation concerning exhibits which may have affected, or have been intended to affect the decision of the judges, the Association has power to withhold the award and may prohibit any such parties or party from exhibiting in any class for one or more years, and may also publish the names of such persons if deemed expedient.
37. Necessary attendants upon stock will be furnished with special tickets upon application to the Manager. These passes, which are not transferrable will bear the names of the person to whom they are issued, and if presented by any other person will be forfeited. Attendants' tickets will be issued as follows: Horses, one for every two, up to six; one for every three over six. Cattle, one for every herd of six. Sheep and Swine, one for each pen or flock.
38. Exhibitors paying entrance fees of \$5 or over will be entitled to free exhibitors' ticket.
39. Parties bringing exhibits to the grounds will be admitted with same by the entry ticket accompanying the exhibit. But afterwards such parties must be provided with regular tickets as above or they will have to pay the regular admission fee.
40. Exhibitors desiring fire or other insurance must give the matter their personal attention.
41. Police will be on duty during the continuance of the Exhibition, but exhibitors are expected to exercise supervision over their articles on exhibition, as the Association will not be responsible for loss or damage by theft, fire or otherwise. Small and valuable articles should be exhibited in show cases, securely locked.
42. Where space has been awarded to an exhibitor, the Association reserves the right in case the exhibitor shall fail to make or maintain a creditable display, to declare the space allotted to him or any portion thereof forfeited. Exhibitors must arrange their exhibits in as attractive a manner as possible and fill the space allotted to them.
43. The Association reserves the right to prescribe the dimensions and regulate the position of all signs and generally to direct the arrangement of all articles on exhibition, so far as the same may be necessary to secure harmony and an attractive appearance.
44. No person will be given permission to distribute any printed or advertising matter upon the grounds or to affix same on any fence or building.
45. No claim for injury to any person or property shall ever be asserted nor suit instituted or maintained against the Association, its officers or agents, by or on behalf of any visitor or any persons, firm or corporation, or their agents, representatives, servants or employees, having license or privilege to exhibit on the Fair Grounds or occupying any space thereon.
46. If any damage, loss or injury to person or property shall be proximately caused by reason of any neglect or wilful act of any person, firm or corporation, their agents, representatives, servants or employees having license or privilege to exhibit on said Fair Grounds or occupying any space thereon, the Association shall in no manner be

Western School Supply Company

REGINA, SASK.

OUR SPECIALTIES:

Preston Ball Bearing Desks
Hyloplate Blackboards
Teachers' Desks and Chairs

Maps and Globes
Kindergarten Goods & Plasticine
School Text Books.

The only complete School Supply House in Saskatchewan. Catalogue will be sent on request.

Western School Supply Company

2338 Dewdney Ave.

Regina, Sask.

Do It Electrically

There are hundreds of things you can do electrically with Delco-Light, just the same as things are done electrically in the city.

Your home can be made more pleasant and attractive for you and your family with such conveniences as a modern bathroom with hot and cold running water, pretty lighting fixtures, and electric fans.



A few of the things you can do electrically with Delco-Light are: Washing, Ironing, Churning, Milk Separating, also pump cold or hot water all through your house automatically.

Complete information will be gladly given on request

THE DELCO LIGHT

S. A. McGaughey, Dealer.

1820 Cornwall St., Regina, Sask.

responsible therefor, and in case it be subjected to any expense or liability, all persons causing the same or liable thereof shall indemnify the said Association.

47. In all cases the right is reserved to reject entirely or accept conditionally, any entry or application; and under no circumstances will exhibits which are offensive by reason of the odor or appearance or which are dangerous by reason of their combustible or explosive character be admitted; and if any such be introduced by an exhibitor through misrepresentation or otherwise, they may be removed by order of the Board.

48. Exhibitors of animals, machinery in motion and other exhibits liable to occasion accidents, injury or damage to persons coming in contact with them shall guard their exhibits and protect the public from coming in contact therewith, and every such exhibitor shall indemnify the Association from and against all claims and demands, costs and charges and expenses which it may incur, suffer or be put to by reason of any accident or of any person being injured or suffering damage through or by reason of any such exhibit not being properly guarded or the public not being properly protected therefrom.

HEAR SOUSA AND HIS BAND

North West Lumber and Supply Co., Ltd.

1420 8th Ave. Phone 3675

LUMBER, BUILDERS' SUPPLIES
COAL and WOOD

WE SPECIALIZE IN
Grains, Grasses and Cleaners

—
The Mooney Seed Co.
LIMITED

REGINA

SASK.

M. G. HOWE

JEWELLER AND OPTICIAN

Scarth St.

Regina, Sask.

Visit this store while in the City.

Diamonds, Waltham Watches, Clocks
Eyes Tested and Glasses Ground while you wait.

M. G. HOWE

Jeweller

Scarth St.

DUNCAN'S DRUG STORE

Our line of Patented Medicines, Toilet Preparations,
Candies, Camera Supplies, Hot Water Bottles, Trusses,
Brushes, Combs, etc., is complete in quality and price.

A full stock of the famous Gourlay Pianos and Phono-
graphs at reasonable prices.

Prescriptions Carefully Prepared

Phone 3212

REGINA

1747 Scarth St.



PRIZE LIST

HORSES

SPECIAL RULES

1. All general rules which are applicable will apply to this department.
2. At the time of making entry the following information must be given regarding each purebred animal entered: (1) the name of the animal; (2) Registration Number in Canadian National Records; (3) its color; (4) the date of its birth; (5) name and registration number of both sire and dam.
3. All stalls must be cleaned out before 7 a.m., so that refuse can be taken away before the arrival of visitors.
4. In any class where certificates of registration in the Canadian National Live Stock Records is called for the exhibitor must present the certificate to the Manager for verification at the time of securing his entry tags. When the certificate is not in the name of the exhibitor, the Manager may accept completed application for transfer if accompanied by the necessary fee. Exhibitors must be prepared to produce registration certificate in the judging ring when required. Exhibitors of mare and foal may show the foal in its class without registration certificate if such cannot be procured owing to uncertainty as to color.
5. No horse suffering from any of the following diseases shall be awarded a premium: Cataract, periodic ophthalmia, roaring, thick wind or whistling, ringbone, side bones, navicular disease, curb, bone spavin thoroughpin or bog spavin. Animals injured by accident which does not lessen their usefulness may be awarded a prize.
6. Owners shall, if required, produce satisfactory proof to the judges of their stallion's virility in the four-year-old and over classes.
7. In the classes for yield mares, all such mares will be eligible to compete excepting those that were entered in one or more of these classes at this Exhibition in 1918. Mares shown in this class in any year must produce a registered foal before being eligible to be shown again in the class for yield mares.
8. Exhibitors desiring to compete in the classes for amateur exhibitors will note General Rule No. 14 on page 13 of the prize list. Animals shown in classes for amateur exhibitors may also be shown in other classes to which they are eligible and duly entered.

We have It! You can get It!

Everything in Gents' Furnishings

IN HATS—We have two winners, the Stetson and the Hindson Special.

RAINCOATS—In the latest up-to-date dressy effects.

SUITS—This department is handled by experts, who have spent their lives making and selling clothing, and it will be to your benefit to see them while in the city.

Be sure and make Hindson's your headquarters while at the Fair

HINDSON BROS.

Phone 2236.

REGINA, SASK.

1711 Scarth St.



**Electric Labor Saving
Devices for the Home**

Call and see our many labor-saving devices. Our electrical store is of great interest to every user of electric current. We welcome you

Get Our Catalogue

**The Sun Electrical Co.
Ltd.**

1842 Scarth St.

Regina, Sask.



HEAVY HORSES

CLYDESDALES

Each animal in these classes must be recorded in the name of the exhibitor in the Clydesdale Stud Book of Canada.

Class	1st	2nd	3rd	4th	5th	6th	7th	8th
1. Stallion foaled previous to Jan. 1st, 1916	\$35		25	\$20	\$15	\$10	\$ 8	\$ 5
2. Stallion foaled in 1916..	25	20	15	12	10	8	5	C
3. Stallion foaled in 1917..	25	20	15	12	10	8	5	C
4. Stallion foaled in 1918..	20	15	12	10	8	5	C	
5. Stallion, any age, shown by Amateur Exhibitor	20	15	12	10	8	5	C	
6. Brood mare, foal at foot	30	25	20	15	12	10	8	5
7. Mare, Veld, foaled previous to Jan. 1st, 1916 (See rule 7, page 23) ..	25	20	15	12	10	8	5	C
8. Filly foaled in 1916 ..	25	20	15	12	10	8	5	C
9. Filly, foaled in 1917 ...	25	20	15	12	10	8	5	C
10. Filly foaled in 1918....	20	15	12	10	8	5	C	
11. Foal of 1919, male or female	20	15	12	10	8	5	C	
12. Female, any age, shown by Amateur Exhibitor..	20	15	12	10	8	5	C	
13. Mare and two of her progeny any age or sex, all to be owned, and progeny to have been bred by the exhibitor..	25	20	15	12	10	5	C	
14. Three Horses, any age or sex, the get of one pure-bred sire. (Name and number of sire to accompany entry.) Animals may be owned by one or more exhibitors..	25	20	15	10	5	5		
15. Best Stallion, any age								Diploma
16. Best Female, any age								Diploma

PERCHERONS

Each animal entered in these classes must be recorded in the name of the exhibitor in the Canadian Percheron Stud Book of Canada.

Class	1st	2nd	3rd	4th	5th	6th	7th	8th
17. Stallion, foaled previous to Jan. 1st, 1916.....	\$35	\$30	\$25	\$20	\$15	\$10	\$ 8	\$ 5
18. Stallion foaled in 1916..	25	20	15	12	10	8	5	C
19. Stallion foaled in 1917..	25	20	15	12	10	8	5	C
20. Stallion foaled in 1918..	20	15	12	10	8	5	C	
21. Stallion, any age, shown by Amateur Exhibitor..	20	15	12	10	8	5	C	
22. Brood mare, with foal at foot	30	25	20	15	12	10	8	5

Amateur Exhibitors See General Rule 14



The Art of Photography

leaves room for the individual treatment of subjects.

We have built up a big business, because of the particular pains we take to give our patrons service that they appreciate.

When visiting Regina be sure to call on us if you want to be certain of getting

Photographs that will Please You

TURNER'S STUDIO
PHOTOGRAPHERS

1745 Scarth St.

Opp. King's Hotel
REGINA

CREDIT FONCIER F.C.

Money to Loan on Improved Farm Property

Prompt Service—Minimum Expense

JNO. LIVINGSTONE, Act. Mgr.

GENERAL ASSURANCE SOCIETY

—WE CAN INSURE YOU—

Fire, Accident and Health, Automobile, Hail and Liability
Insurance

Credit Foncier Bldg., Regina, Cornwall and 12th Ave.

Jno. Livingstone, Act. Mgr.

Geo. Johnstone, Insurance Mgr.

PRIZE LIST

PERCHERONS—(Continued)

23.	Mare, Yeld, foaled previous to Jan. 1st, 1916 (See rule 7, page 23)...	25	20	15	12	10	8	5	C
24.	Filly, foaled in 1916....	25	20	15	12	10	8	5	C
25.	Filly, foaled in 1917....	25	20	15	12	10	8	5	C
26.	Filly, foaled in 1918....	20	15	12	10	8	5	C	
27.	Foal of 1919 male or female	20	15	12	10	8	5	C	
28.	Female, any age, shown by Amateur Exhibitor..	20	15	12	10	8	5	C	
29.	Mare and two of her progeny, any age or sex, all to be owned, and progeny to have been bred by the Exhibitor..	25	20	15	12	10	5		
30.	Three Horses, any age or sex, the get of one pure-bred sire. (Name and number of sire to accompany entry). Animals may be owned by one or more Exhibitors	25	20	15	10	5	5		
31.	Best Stallion, any age								Diploma
32.	Best Female, any age								Diploma

BELGIANS

Each animal entered in these classes must be recorded in the name of the Exhibitor in the Canadian Belgian Stud Book.

Class	1st	2nd	3rd	4th	5th	6th	7th	8th
33. Stallion foaled previous to Jan. 1st, 1916	\$35	\$30	\$25	\$20	\$15	\$10	\$8	\$5
34. Stallion foaled in 1916..	25	20	15	12	10	8	5	C
35. Stallion foaled in 1917..	25	20	15	12	10	8	5	C
36. Stallion, foaled in 1918..	20	15	12	10	8	5	C	
37. Stallion, any age, shown by Amateur Exhibitor..	20	15	12	10	8	5	C	
38. Brood Mare, foal at foot	30	25	20	15	10	8	5	
39. Mare, Yeld, foaled previous to Jan. 1st, 1916 (See rule 7, page 23)....	25	20	15	12	10	8	5	C
40. Filly, foaled in 1916....	25	20	15	12	10	8	5	C
41. Filly, foaled in 1917....	25	20	15	12	10	8	5	C
42. Filly, foaled in 1918....	20	15	12	10	8	5	C	
43. Foal of 1919, male or female	20	15	12	10	8	5	C	
44. Female, any age, shown by Amateur Exhibitor	20	15	12	10	8	5	C	
45. Mare and two of her progeny, any age or sex, all to be owned, and progeny to have been bred by the Exhibitor	25	20	15	12	10	5	C	

Live Stock Entries Close July 17th

**The C. S. HYMAN CO.
Limited**

Regina, Sask.

Are Cash Buyers of

**HIDES, SHEEP SKINS,
WOOL, TALLOW
AND FURS**

Try them with your next
Shipment.

**The Saskatchewan
Co-operative Creameries**

REGINA

Patrons of these Creameries receive the full benefit of this Co-Operative system. Last year cream was received from over 8,000 farmers and over 2,500,000 pounds of butter was made. The farmers who shipped the cream received over \$49,000.00 as a final payment of dividends.

Express charges on cream shipments are paid at the Creameries.

LOANS

We can always arrange loans on good improved properties at the lowest rates, and have special facilities for handling large farm loans.

TRUST COMPANY

Facilities for handling estates and managing properties.

VICTORY BONDS BOUGHT AND SOLD

Fire, Hail and Other Lines of Insurance

Call on us any time you are in Regina, or write

McAra Bros. & Wallace

1857 Scarth Street

BELGIANS—(Continued)

- 46. Three Horses, any age or sex, the get of one pure-bred sire. (Name and number of sire to accompany entry). Animals may be owned by one or more Exhibitors 25 20 15 10 5 5
- 47. Best Stallion, any ageDiploma
- 48. Best Female, any ageDiploma

HEAVY DRAFT HORSES

(Open Classes)

All the horses in these classes must weigh 1600 pounds or over excepting the leaders in the six-horse teams. All horses must be shown hitched to a suitable vehicle. Horse to count 50%, manners 15%, hauling load 15%, equipment 5% and walking 15%. Animals may be pure bred or grade. In the classes for four or six horse teams, two bona fide farmers may unite in making up a team, but the names of such exhibitors must be stated at the time of making entry. These classes will be judged Wednesday afternoon, July 30th.

Class	1st	2nd	3rd	4th	5th	6th
49. Single Mare or Gelding	\$20	\$15	\$12	\$10	\$ 8	\$ 5
50. Two horse team of mares or Geldings	20	15	12	10	8	5
51. Four Horse Tandem, mares or geldings	20	15	12	10	8	5
52. Six Horse Tandem team, mares or geldings	20	15	12	10	8	5

HEAVY DRAFT HORSES

(Bona Fide Farmers Only)

All the horses in these classes must weigh 1600 pounds or over. All horses must be shown hitched to a suitable vehicle. Horse to count 50%, manners 15%, hauling load 15%, equipment 5% and walking 15%. Only grade mares and pure bred or grade geldings can be shown in these classes. In the class for four horse teams two bona fide farmers may unite in making up a team, but the names of such exhibitors must be stated at the time of making entry. A farmer is one who resides on his farm and whose sole occupation is farming. These classes will be judged Thursday afternoon, July 31st.

Class	1st	2nd	3rd	4th	5th	6th
53. Single, Grade Mare or Gelding....	\$20	\$15	\$12	\$10	\$ 8	\$ 5
54. Two Horse team of Grade Mares or Geldings	20	15	12	10	8	5
55. Four Horse Tandem, Grade Mares or Geldings	20	15	12	10	8	5

See Class for Boy and Girl Exhibitors, Page 71

ROBINSON'S

FOR EVERYTHING IN MEN'S WEAR

MEN—Do your buying with a Specialty Firm.

OUR Specialty is Men's Wear, all the time.

SUITS—We carry one of the best stocks in the city. Every suit finished to your measure by our own tailors. We still have some of the "old Dye" Navy Blue Serges.

THE BEST FOR LESS—OUR MOTTO.

ARE You in the market for a Raincoat or a pair of Boots. Our prices are hard to beat.

HARD Work Clothes for everyone. Mitts, Gloves, Overalls, Odd Trousers.

TO Buy your Overalls right you will have to come here. Northern Brand, Robinson's Special, Peabody's, G.W.G. and Headlight Brands. We can save you 25c on each pair on any line.

BEAT our prices you cannot in the city. We sell the quantity. Then again you are not paying for any fancy fixtures here. We are out for the Men's business and if close prices and service count we should continue to get it.

See the Local Papers for Special Prices

ROBINSON'S

1815 S. Ry. St.

"The Men's Store."

Jolly's Cash Drug Store

1821 South Railway St.

Opposite Union Depot

WE SPECIALIZE IN PRESCRIPTIONS

Phone 3666.

Regina, Sask.

Headquarters for Stock Foods and Drugs, Poultry Remedies. Dog Remedies, Veterinary Supplies. Agents for Cutter's Serums and Vaccines. Blackleg Pills.

Mail or Phone Orders Attended Promptly.

LIGHT DRAFT OR AGRICULTURAL HORSES

Mature horses in these classes must weigh between 1,400 pounds and 1,600 pounds. Registered horses or horses eligible for registration not eligible to compete in this class. Competition is open only to bona fide farmers, who live on their farms and whose sole occupation is farming. Exhibits in classes 57, 62 and 63 are to be shown hitched to a suitable vehicle. These classes will be judged Wednesday afternoon, July 30.

Class	1st	2nd	3rd	4th	5th
56. Brood Mare with foal at foot	\$15	\$12	\$10	\$ 8	\$ 5
57. Yeld Mare or Geldings, foaled previous to Jan. 1st, 1916	15	12	10	8	5
58. Filly or Gelding, foaled in 1916.....	15	12	10	8	5
59. Filly or Gelding, foaled in 1917	10	8	6	4	C
60. Filly or Gelding, foaled in 1918	10	8	6	4	C
61. Foal of 1919, male or female	8	6	5	4	C
62. Team of Mares or Geldings, suitable for farm purposes to be shown in harness to wagon	30	20	15	10	5
63. Four-horse Tandem Team, Mares or Geldings, hitched	30	20	15	10	5
64. Brood Mare and two of her progeny the get of a pure-bred sire (name and number of sire to accompany entry)..	20	15	10	5	
65. Three, the get of a pure-bred sire (name and number of sire to accompany entry) to be foaled after Jan. 1st, 1916, bred and owned by the Exhibitor	20	--	10	5	

SPECIALS FOR CLYDESDALES

Donated by the Clydesdale Horse Association of Canada. J. W. Wheaton, Secretary, 181 Simcoe street, Toronto, Ontario.

Class	1st	2nd	3rd
66. Best Clydesdale Stallion (imported or Canadian-bred)	\$25	\$15	
67. Best Clydesdale Female (imported or Canadian-bred)	20	15	
68. Best Clydesdale Stallion (Canadian-bred)	25	15	
69. Best Clydesdale Female (Canadian-bred)	20	15	
70. Best single Mare or Gelding in harness sired by registered Clydesdale stallion	25	15	
71. Best pair Grade Mares or Geldings in harness, sired by registered Clydesdale stallion	30	20	\$10

Canadian-bred stallions or females showing in the imported or open classes are not eligible to compete in the Canadian-bred classes.

Live Stock Entries Close July 17th

While in the City Stop at
THE KITCHENER

The Leading Hotel in Regina

AMERICAN PLAN

1736 Rose Street.

Phone 2696-7-8

**Canada Drug and
Book Co. Limited**

Books, Stationery, School
Books, School Supplies,
Drugs, Kodaks, Toys and
Novelties. Largest stock in
the Province. **PROMPT
SERVICE.**

**Canada Drug
and Book Co.
LIMITED**

Opposite Union Station, Regina

**North Star Drilling
Company, Limited**

Office, Warehouse and Factory.
Cor. Dewdney and Armour Sts.
PHONE 5232

Manager's Residence Phone 3367

**MANUFACTURERS OF WELL
DRILLS, AUGERS, WOOD AND
IRON PUMPS AND WELL
SUPPLIES**

Well Drillers and Dealers in
**PUMPS, PIPINGS, CYLINDERS,
SAND SCREENS AND WELL
CASINGS, GASOLINE EN-
GINES, GRAIN GRINDERS,
WOOD SAWS, CREAM SEPAR-
ATORS AND DYNAMITE.**

Canadian Agents for
Gus Pech Foundry Mfg. Co.
Monitor Well Drills and Augers

A. N. DUFF, Pres. and Manager

SPECIALS FOR CLYDESDALES—(Continued)

GRAND CHAMPIONSHIP MEDALS

- | | Value |
|--|-------|
| 72. For the best Clydesdale Stallion (imported or Canadian bred) | \$20 |
| 73. For the best Clydesdale Female (imported or Canadian bred) | 20 |

THE WATSON SHIELD

Donated by the late Captain G. L. Watson, of British Columbia. This Shield is now under the control of the Clydesdale Horse Association of Canada, and will be competed for annually at exhibitions in Canada.

74. For the best Clydesdale Stallion, bred, born and raised in Canada, Watson Shield, value\$1,200.00
 "Reserve" by the Clydesdale Horse Association 20.00

A miniature of the Shield made of sterling silver, value \$25.00, engraved with the winner's name will be given the winner and becomes his personal property.

BY THE IMPERIAL BANK OF CANADA

J. A. Wetmore Manager, Regina Branch.

75. Five registered Clydesdales any age or sex, owned by one ExhibitorGold Medal
 Second by the Exhibition Association \$10
 Third by the Exhibition Association 5

Amateur Exhibitors See General Rule 14

AUTO TOP REPAIRS

We have expert workmen who know how to make New Tops—repair Curtains or any work in Upholstering required. We also specialize in Picture Framing, carrying the largest stock of Mouldings and Frames.

L. E. WEAVER

Phone
5021

Upholeterer and Carpenter

1919 Smith St.
Regina

R

3-7-8

illing
ted

Factory,
ur Sts.

ne 3367

WELL
D AND
VELL

ers in
NDERS,
WELL
EN-
NDERS,
EPAR-
MITE.

or
g. Co.
Augers
Manager



THE FAMOUS GARDEN CITY FEEDER

Has done more to take the hardship out of threshing and make it a pleasure than any piece of machinery on the farm.

BECAUSE it feeds a threshing machine as it should be fed, regardless of the antics of ignorant or mean pitchers. No more swearing at them—let them pile the sheaves on any way they please and as fast as they want to; the Garden City Feeder will deliver the grain end first to the cylinder, in an even flow of uniform depth. No more broken spikes or slugged cylinder; no more overloaded straw racks and sieves; no clogged blower; no broken or burned belts; no wasted grain; no long waits for repairs. Just a steady run all day, every day, season after season. It's fun to thresh that way, and profitable too. Don't take our word for it, ask any user, or let us prove it to you.

Write today for free catalogue.

The Garden City Feeder Co., Ltd.
REGINA, SASK.

Bruce Davison Co., Brandon, Man.; W. S. Munroe Co., Calgary, Alta.; A. E. Gardiner, Saskatoon, Sask.; Mart McMahon, Lethbridge, Alta. Remember we are sole agents for the **CASWELL BELT GUIDE**.

SATISFACTION GUARANTEED

SPECIALS FOR PERCHERONS

Special prizes offered by the Canadian Percheron Horse Breeders' Association, William H. Wilson, Secretary, Calgary, Alberta.
Animals must be registered in the Canadian Percheron Stud Book.

Class		1st	2nd	3rd
76.	Best Canadian Bred Stallion	\$12	\$ 8	Ribbon
77.	Best Canadian Bred Mare	12	8	Ribbon
78.	Best Grade Percheron Gelding, two years and up, sired by a registered Percheron Stallion	12	8	Ribbon
79.	Best Grade Percheron Mare, two years and up, sired by a registered Percheron Stallion	12	8	Ribbon

Special prizes offered by the Percheron Society of America, Wayne Dinsmore, Secretary, Chicago, Ill.

80. Special A.—Champion Stallion, any age, owned by exhibitor, 1st prize, Silver Medal; 2nd prize, Bronze Medal; 3rd prize, Reserve Ribbon.
81. Special B.—Best Mare, any age, owned by exhibitor, 1st prize, Silver Medal; 2nd prize, Bronze Medal; 3rd prize, Reserve Ribbon.
82. Special C.—Best Three Mares, any age, owned by exhibitor, 1st prize, Silver Medal; 2nd prize, Bronze Medal; 3rd prize, Reserve Ribbon.
83. Special D.—Best four animals, any age, get of one sire, owned by exhibitor, 1st prize, Silver Medal; 2nd prize, Bronze Medal; 3rd prize, Reserve Ribbon.
84. Special E.—Best two animals, either sex, produce of one mare, owned by exhibitor, 1st prize, Silver Medal; 2nd prize, Bronze Medal; 3rd prize, Reserve Ribbon.
85. Special F.—Champion Stud, Stallion and Four Mares, owned by exhibitor, 1st prize, Sterling Silver Trophy; 2nd prize, Silver Medal; 3rd prize, Reserve Ribbon.
86. Special G.—Best Five Stallions, any age, owned by exhibitor, 1st prize, Silver Medal; 2nd prize, Bronze Medal; 3rd prize, Reserve Ribbon.

HEAR SOUSA AND HIS BAND

Have You Bought Your Fordson Tractor ?

**SOME DAY EVERY UP-TO-DATE FARMER
WILL OWN A FORDSON**

BECAUSE: It's the ideal, and most economical light tractor.

It is simple to operate, compact, strong, light,
powerful.

You can secure service and repairs immediately
you need them. A phone call will rush
them to you.

Already over 25,000 Fordsons are in operation—Giving
steady, reliable, economical service—The service that has made
the name "FORD" known all over the continent.

Built to meet actual Farming Conditions, and proven de-
pendable under every existing condition.

The Handiest Machine ever seen around the farm.

SEE YOUR NEAREST FORD DEALER

RODERICK LEAN

The light Automatic
Engine Disc for Fordson
Tractors.

OLIVER NO. 7 PLOW

for
Fordson Tractors

**Saskatchewan Motor Co., Ltd.
Regina**

Distributors of Ford Cars and Fordson Tractors for
Southern Saskatchewan.



**LIGHT HORSES
THOROUGHBREDS**

Each animal in these classes must be recorded in the name of the Exhibitor in the Canadian National Live Stock Record.

Class		1st	2nd	3rd	4th
111.	Stallion, any age	\$20	\$15	\$10	\$ 5
112.	Female, any age	20	15	10	5

HACKNEYS

Each animal entered in these classes must be recorded in the name of the Exhibitor in the Canadian Hackney Stud Book.

Class		1st	2nd	3rd	4th
113.	Stallion, any age	\$20	\$15	\$10	\$ 5
114.	Female, any age	20	15	10	5

STANDARD BREDS

Each animal entered in these classes must be recorded in the name of the Exhibitor in the Canadian Standard Bred Stud Book at the time of making entry. Exhibits shown in classes 115 and 117 must be shown in harness.

Class		1st	2nd	3rd
115.	Stallion, foaled previous to Jan. 1, 1917	\$20	\$15	\$10
116.	Stallion, foaled on or after Jan. 1, 1917	15	10	5
117.	Mare, foaled previous to Jan. 1, 1917	20	15	10
118.	Filly, foaled on or after Jan. 1, 1917	15	10	5

SPECIALS FOR STANDARD BREDS

By the Canadian Standard Bred Horse Society. John W. Brant, Secretary, Ottawa, Ontario.

Class		1st
119.	Best Stallion, three years old or under, shown to harness..	\$50
120.	Best Mare, three years old or under, shown to harness	50

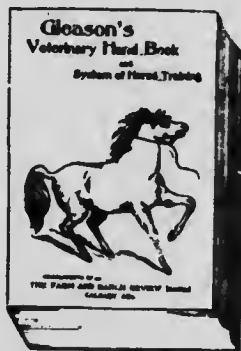
ROADSTERS (Trotters and Pacers)

To be shown to appropriate four wheeled road wagon. Conformation, substance, style of going, manners, action, biting and shoeing and as they are and appear at the time of showing will be considered in judging.

Class		1st	2nd	3rd
123.	Single Trotter, mare or gelding	\$15	\$10	\$ 5
124.	Pair of Matched Trotters, mares or geldings	20	15	10
125.	Single Pacer, mare or gelding	15	10	5
126.	Pair of matched Pacers, mares or geldings	20	15	10

Gleason's Veterinary Handbook

And System of Horse Training



A book that should be in the hands of every farmer. Oliver W. Gleason is a recognized and leading authority and in this 323-page book he deals with the following subjects thoroughly and comprehensively: Diseases of the Horse; Diseases of Cattle; Diseases of Sheep; Horse and Cattle Medicines; Prescriptions and Preparations; Diseases of Poultry; Diseases of Swine; Diseases of Dogs; Diseases of Birds. 323 pages; size of page $7\frac{1}{4}$ x $5\frac{1}{4}$ ins.

SENT FREE AND POSTPAID with 1 year's subscription at \$1.
or 3 years' subscription at \$2.

Farm and Ranch Review

Calgary, Alberta

FARMERS' DRIVING HORSES

To be driven by the owner or a member of his family.

Class	1st	2nd	3rd
127. Single Driver, mare or gelding, to be shown to appropriate vehicle. The entire outfit to have been the bona fide property of the exhibitor for at least three months prior to August 1st, 1919.	\$10	\$5	\$5
128. Pair of Drivers, mares or geldings, to be shown to appropriate vehicle. Same conditions as in the previous section	20	15	10

NOTE—A farmer is one who resides on his farm and whose sole occupation is farming.

SADDLE HORSES

Class	1st	2nd	3rd	4th
129. Saddle Horse, mare or gelding	\$15	\$10	\$8	\$5
130. Lady's Saddle Horse, mare or gelding, ridden by a lady	15	10	8	5
131. Combination Horse, mare or gelding, to be first shown in an appropriate vehicle. The horse then to be unharnessed in the ring and shown under saddle	15	10	8	5

PONIES

Class	1st	2nd	3rd	4th
132. Pony in harness, stallion, mare or gelding, 14 hands or under, to be driven by boy or girl under 15 years of age	\$10	\$5	\$3	\$2
133. Pair of ponies in harness, stallions, mares or geldings, 14 hands or under to be driven by a boy or girl under 15 years of age.....	15	10	8	2
134. Saddle pony, stallion, mare or gelding, 14 hands or under to be ridden by a boy or girl under 15 years of age.	10	5	3	2

SPECIALS FOR PONIES

Donated by the Canadian Pony Society, G. de W. Green, Secretary, Toronto, Ontario.

135. Best Shetland Pony, mare or gelding by a registered sire	Silver Medal
136. Best Pony, mare or gelding, any other breed than Shetland (Hackneys excepted) by a registered sire	Silver Medal

DELIVERY AND DRAY

Horses in these classes must be shown hitched to wagon or dray and both horse and rig must be used in regular delivery. In each class the horse and its manners to count 75 per cent., wagon and equipment 25 per cent. Horses shown in these classes must be regularly used for delivery or dray purposes up to and including Saturday previous to the opening of this exhibition.

Class	1st	2nd	3rd	4th	5th	6th
138. Single Horse, mare or gelding ...	\$15	\$10	\$8	\$6	\$4	\$2
139. Single Dray Horse, mare or gelding	15	10	8	6	4	2
140. Pair Dray Horses, mares or geldings	20	15	10	8	5	4

Amateur Exhibitors See General Rule 14

MASSEY-HARRIS CO.
LIMITED

Farm Implements

AGENCIES EVERYWHERE

**WE CAN SAVE YOU MONEY ON
FLOUR AND FEED**

It will pay you to write us for prices on Flour and Feed,
Stock Food, Salt, Garden and Field Seeds, etc., before buying.

REGINA FLOUR AND FEED COMPANY

1757 Halifax St.

Regina, Sask.

We invite you to call and see our
large assortment of Furniture. We
carry the largest stock in Regina,
and our prices are lower than else-
where.

REINHORN BROS., LTD.

11th Ave., near Post Office, Regina, Sask.



CATTLE

1. All General Rules which are applicable will apply to this department.
2. At the time of making entry the following information must be given regarding each pure-bred animal entered:
 1. The name of the animal.
 2. Registration Number in Canadian National Records.
 3. The date of its birth.
 4. Name and registration number of both sire and dam.
3. All pure-bred cattle competing for prizes must be registered in their respective Canadian Herd Books in the name of the Exhibitor. Exhibitors must produce registration certificate for verification at the time of securing entry tickets.
4. Accommodation may not be provided for cattle not properly entered. Special accommodation will be provided for nurse cows, but Exhibitors must state on entry blank how many nurse cows they wish to bring.
5. The age of cattle must be computed from July 1st.
6. In the aged cow classes for beef cattle the cow's own calf under one year old must be shown with the dam, but the calf will not be considered in placing the award, or the exhibitor must produce in the show ring registration certificate of calf produced by the cow since Jan. 1st, 1918.
7. Bulls over one year old must have rings in their noses.
8. Exhibitors desiring to compete in the classes for amateur exhibitors will note General Rule No. 14 on page 13 of the prize list. Animals shown in classes for amateur exhibitors may also be shown in other classes to which they are eligible and duly entered.

HEAR SOUSA AND HIS BAND

Live Stock Entries Close July 17th

FARMERS!

It will be to your interests to sell your offerings of Live Stock, also your Poultry, Eggs and Butter. We are your selling agents and always in a position to pay the highest market value at all times and able to handle all you have to offer.

P. Burns & Co. Limited

PACKERS, EXPORTERS, AND PROVISIONERS

Plants at
REGINA, EDMONTON, CALGARY, VANCOUVER
and
PRINCE ALBERT

Branches and Receiving Stations:
Saskatoon, Moose Jaw, Yorkton, Lethbridge, Cranbrook, Nelson, Vernon, Victoria, Revelstoke and Fernie

Have you ever used **BURNS' DIGESTER TANKAGE** for your hogs? If not you have missed using the best hog feed obtainable. **TRY IT. Phone 4335.**

BEEF CATTLE

SHORTHORNS

See also Classes 328 and 329.

Each animal entered in this class must be recorded in the name of the Exhibitor in the Dominion Shorthorn Herd Book.

Class		1st	2nd	3rd	4th	5th
200.	Bull, calved previous to July 1, 1916..	\$25	\$15	\$12	\$10	\$ 5
201.	Bull calved July 1, 1916 to June 30, 1917	20	15	12	10	5
202.	Bull, calved July 1, 1917 to June 30, 1918, open	20	15	12	10	5
203.	Bull, calved July 1, 1917 to June 30, 1918, bred by exhibitor	20	15	12	10	5
204.	Bull, calved July 1, 1918 to Dec. 31, 1918	12	10	8	6	4
205.	Bull, calved on or after Jan. 1, 1919	12	10	8	6	4
206.	Bull, any age, shown by an amateur exhibitor	12	10	8	6	4
207.	Senior Champion Bull, two years or over					
208.	Junior Champion Bull, under two years					
209.	Grand Champion Bull					
210.	Cow, calved previous to July 1, 1916, with own calf under one year at foot	25	15	12	10	5
211.	Heifer, calved July 1, 1916 to June 30, 1917	20	15	12	10	5
212.	Heifer, calved July 1, 1917 to June 30, 1918, open	20	15	12	10	5
213.	Heifer, calved July 1, 1917 to June 30, 1918, bred by exhibitor	20	15	12	10	5
214.	Heifer, calved July 1, 1918 to Dec. 31, 1918	12	10	8	6	4
215.	Heifer, calved on or after Jan. 1, 1919..	12	10	8	6	4
216.	Female, any age, shown by amateur exhibitor	12	10	8	6	4
217.	Senior Champion Female, two years or over					
218.	Junior Champion Female, under two years					
219.	Grand Champion Female					

Ribbon
Ribbon
Diploma

Ribbon
Ribbon
Diploma

The Dominion Shorthorn Breeders' Association, G. E. Day, Secretary, Guelph, Ontario, donates \$200 towards the following classes:

220.	Graded Herd. Bull, two years or over; cow, three years or over; heifer, two years; heifer, one year; heifer, under one year	25	20	15	12	8
221.	Junior Herd, one bull and three females, all calved on or after July 1, 1917, and bred by exhibitor	25	20	15	12	8
222.	Three, either sex, calved on or after July 1, 1918, bred by exhibitor	25	20	15	12	8
223.	Three, any age, either sex, bred by exhibitor, and sired by one bull	25	20	15	12	8
224.	Two, any age, either sex bred by exhibitor, and one progeny of one cow	25	20	15	12	8

See Class for Boy and Girl Exhibitors, Page 71

HAIL INSURANCE

Liberal Treatment
Prompt Service

Full Government Deposit
Absolute Security

THE BRITISH CROWN

Hail Underwriters, Limited

36 Canada Life Bldg.

Regina

Your Musical Requirements

of every nature can be supplied by us, whether it be a Piano, Player Piano, or an Organ, Violin, Mandolin, Guitar or Banjo. Strings and sundries for all instruments.

SOLE DISTRIBUTORS FOR

GERHARD HEINTZMAN PIANOS
MARTIN ORME PIANOS
SHERLOCK-MANNING PIANOS

THE NEW EDISON

The Phonograph with a Soul

W.G.F.
Sythes & Co.
LIMITED

P.O. BOX 105

REGINA'S BIG MUSIC HOUSE
2130 ELEVENTH AVE., REGINA
BRANCH, WEYBURN, SASK.

HEREFORDS

Each animal entered in these classes must be registered in the name of the Exhibitor in the Canadian Hereford Herd Book.

The American Hereford Breeders' Association, R. J. Kinzer, Secretary, Kansas City, Mo., donates \$600 towards the following classes.

Class	1st	2nd	3rd	4th	5th	6th	7th	8th
225. Bull, calved previous to July 1, 1916	\$40	\$30	\$25	\$20	\$15	\$12	\$10	\$ 5
226. Bull, calved July 1, 1916 to June 30, 1917	35	30	25	20	15	12	10	5
227. Bull, calved July 1, 1917, to June 30, 1918, open ..	30	25	20	15	12	10	7	5
228. Bull, calved July 1, 1917 to June 30, 1918, bred by exhibitor	30	25	20	15	12	10	7	5
229. Bull, calved July 1, 1918 to Dec. 31, 1918	25	20	15	12	10	8	7	5
230. Bull, calved on or after Jan. 1, 1919	25	20	15	12	10	8	7	5
231. Bull, any age, shown by an amateur exhibitor ..	12	10	8	6	4			
232. Senior Champion Bull, two years or over	Ribbon							
233. Junlor Champion Bull, under two years	Ribbon							
234. Grand Champion Bull ..	Diploma							
235. Cow, calved previous to July 1, 1916, with own calf, under one year at foot	40	30	25	20	15	12	10	5
236. Heifer, calved July 1, 1916 to June 30, 1917 ..	35	30	25	20	15	12	10	5
237. Heifer, calved July 1, 1917 to June 30, 1918, open	30	25	20	15	12	10	7	5
238. Heifer, calved July 1, 1917 to June 30, 1918 bred by exhibitor	30	25	20	15	12	10	7	5
239. Heifer, calved July 1, 1918 to Dec. 31, 1918...	25	20	15	12	10	8	6	5
240. Heifer, calved on or after Jan. 1, 1919	25	20	15	12	10	8	6	5
241. Female, any age, shown by an amateur exhibitor	12	10	8	6	4			
242. Senior Champion Female, two years or over	Ribbon							
243. Junlor Champion Female under two years	Ribbon							
244. Grand Champion Female	Diploma							

Amateur Exhibitors See General Rule 14

Prest-o-Lite Battery

Service Station

We sell, rent, recharge and repair Batteries.
All work guaranteed and prices are right.

HALL'S

1734 Cornwall St.

REGINA

Broken and Worn Castings

Are Repaired, Machined and Guaranteed

Don't throw away and scrap those broken, cracked and worn machinery parts. We will repair them for you and make them as good as new, and guarantee all our work.

We can weld Cast Iron, Malleable Iron, Steel, Brass and Aluminum; also finish off the work, machine or turn ready to put in use again.

We specialize all kinds of Magneto Repairs

THE REGINA MECHANICS

1825 Lorne Street, Regina, Sask.

Phone 2368

PRIZE LIST

HEREFORDS—(Continued)

The Canadian Hereford Breeders' Association, H. D. Smith, Secretary, R.R. No. 1, Ancaster, Ontario, donates \$200 towards the following classes.

Class	1st	2nd	3rd	4th	5th
245. Graded Herd, bull, two years or over; cow, three years or over; heifer, two years and under three; heifer, one year and under two; heifer, under one year	\$35	\$25	\$15	\$10	\$ 6
246. Junior Herd, one bull, under two years; and two heifers, one year and under two; and two heifers, under one year, all calved on or after July 1, 1917, and bred by exhibitor	30	20	15	10	6
247. Three, either sex, calved on or after July 1, 1918, bred by exhibitor	30	20	15	10	6
248. Three, any age either sex, bred by exhibitor and sired by one bull	30	20	12	8	6
249. Two, any age, either sex, bred by exhibitor, and the progeny of one cow	25	20	12	8	6

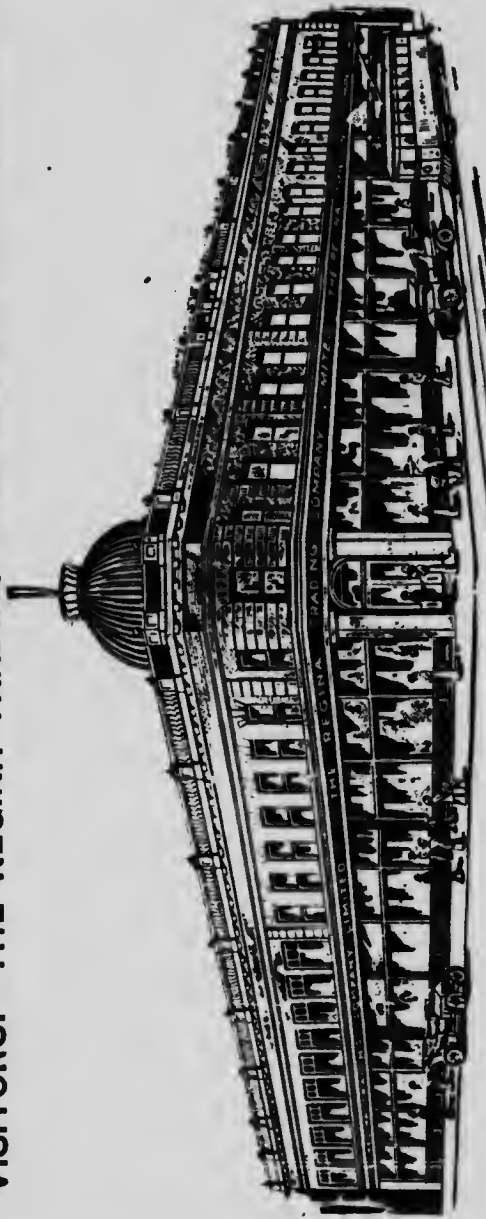
ABERDEEN-ANGUS

Each animal entered in these classes must be recorded in the name of the Exhibitor in the Canadian Aberdeen-Angus Herd Book.

Class	1st	2nd	3rd	4th	5th
250. Bull, calved previous to July 1, 1916..	\$25	\$15	\$12	\$10	\$ 5
251. Bull, calved July 1, 1916 to June 30, 1917	20	15	12	10	5
252. Bull, calved July 1, 1917 to June 30, 1918, open	20	15	12	10	5
253. Bull, calved July 1, 1917 to June 30, 1918, bred by exhibitor	20	15	12	10	5
254. Bull, calved July 1, 1918 to Dec. 31, 1918	12	10	8	6	4
255. Bull, calved on or after Jan. 1, 1919	12	10	8	6	4
256. Bull, any age, shown by an amateur exhibitor	12	10	8	6	4
257. Senior Champion Bull, two years or over					
258. Junior Champion Bull, under two years		Ribbon			
259. Grand Champion Bull		Ribbon			
260. Cow, calved previous to July 1, 1916, with own calf, under one year, at foot..		Diploma			
261. Heifer, calved July 1, 1916 to June 30, 1917	25	15	12	10	5
262. Heifer, calved July 1, 1917 to June 30, 1918, open	20	15	12	10	5
263. Heifer, calved July 1, 1917 to June 30, 1918, bred by exhibitor	20	15	12	10	5
264. Heifer, calved July 1, 1918 to Dec. 31, 1918	12	10	8	6	4
265. Heifer, calved on or after Jan. 1, 1919..	12	10	8	6	4
266. Female, any age, shown by an amateur exhibitor	12	10	8	6	4

Live Stock Entries Close July 17th

VISITORS!—THE REGINA TRADING COMPANY BID YOU WELCOME.



We're glad you've come to Regina for the exhibition—and we hope that you'll have such a good time every minute of every hour of every day that you'll always be glad you came!

It surely is a pleasure to greet you as a visitor.

To show you around as a sightseer.

To help you in your selections as a friend

To serve you as a customer.

We hope that you will make this store your Regina home, and take full advantage of the things we have provided for your personal comfort and convenience.

EVERYTHING FOR MAN, WOMAN AND CHILD, AT REGINA'S FAIREST PRICES.

THE REGINA TRADING COMPANY, LTD.

"THE BEST PLACE TO SHOP, AFTER ALL."

ABERDEEN-ANGUS—(Continued)

- 267. Senior Champion Female, two years or over Ribbon
- 268. Junior Champion Female, under two years Ribbon
- 269. Grand Champion Female Diploma

The Canadian Aberdeen-Angus Breeders' Association, W. I. Smale, Secretary, Brandon, Manitoba, donates \$100 towards the following classes:

Class		1st	2nd	3rd
270.	Graded Herd, bull, two years or over; cow, three years or over; heifer, two years; heifer, one year; heifer, under one year	\$20	\$12	\$ 8
271.	Junior Herd, one bull and three females, all calved on or after July 1, 1917, and bred by exhibitor	20	12	8
272.	Three, either sex, calved on or after July 1, 1918 bred by exhibitor	20	12	8
273.	Three, any age, either sex, bred by exhibitor, and sired by one bull	20	12	8
274.	Two, any age, either sex, bred by exhibitor, and the progeny of one cow	20	12	8
275.	Special by the Aberdeen-Angus Cattle Society, James R. Barclay, Secretary, 9 Old Market Place, Banff, Scotland. Best Aberdeen Angus in the Show	Major Silver Medal		

HERDMAN'S PRIZE

Class		1st	2nd	3rd	4th	5th
276.	Herdsmen's Prize for the best fitted and conditioned animal of any beef breed	\$ 5	\$ 4	\$ 3	\$ 2	\$ 1

Competitors must be the fitters and must have had charge of the animal entered for at least three months prior to the date of the show. Animals may be of any age or sex.

Awards based on the following conditions: Fitting and condition of the animal, 60 per cent.; deportment, dress and manners of competitor and skill in showing the animal in the ring, 40 per cent.

SPECIAL

- 277. For the best Beef Animal at the Exhibition, any age or sex, bred, raised and exhibited by a resident of the Province of Saskatchewan, Prize, Bank of Commerce Silver Medal. Donated by the Canadian Bank of Commerce, A. W. Ridout, Manager, Regina, Sask.

HEAR SOUSA AND HIS BAND

See Class for Boy and Girl Exhibitors, Page 71

"THE BEST PLACE TO SHOP, AFTER ALL."

Hassler Shock Absorber

FOR FORD CARS

FOR COMFORT

All The Time

FOR ECONOMY

In Gasoline

EQUIP YOUR FORD WITH

THE HASSLER

Put Yours on Today

PROSPECTIVE AGENTS PLEASE WRITE

W. J. HUNTER

Canada Life Building, Cornwall Street Entrance

DISTRIBUTOR FOR SASKATCHEWAN AND ALBERTA

DAIRY CATTLE

HOLSTEINS

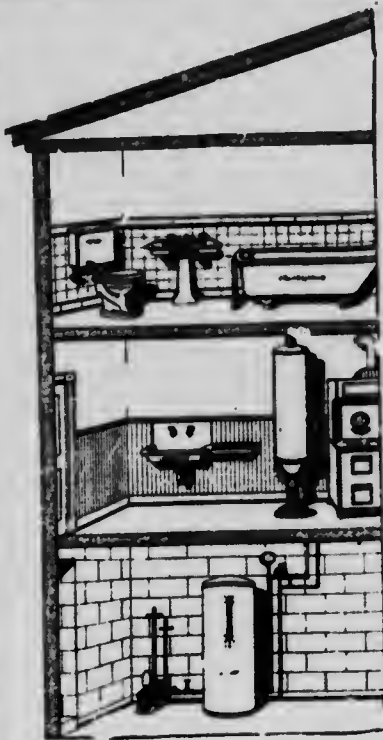
Each animal entered in these classes must be recorded in the name of the Exhibitor in the Canadian Holstein-Friesian Herd Book.

Class	1st	2nd	3rd	4th	5th
278. Bull, calved previous to July 1, 1916..	\$25	\$15	\$12	\$10	\$ 5
279. Bull, calved July 1, 1916 to June 30, 1917	20	15	12	10	5
280. Bull, calved July 1, 1917 to June 30, 1918, open	20	15	12	10	5
281. Bull, calved July 1, 1917 to June 30, 1918, bred by Exhibitor	20	15	12	10	5
282. Bull, calved July 1, 1918 to Dec. 31, 1918	12	10	8	6	4
283. Bull, calved on or after Jan. 1, 1919....	12	10	8	6	4
284. Bull, any age, shown by an Amateur Exhibitor	12	10	8	6	4
285. Senior Champion Bull, two years or over		Ribbon			
286. Junior Champion Bull, under two years		Ribbon			
287. Grand Champion Bull		Diploma			
288. Cow, calved previous to July 1, 1916..	25	15	12	10	5
289. Heifer, calved July 1, 1916 to June 30, 1917	20	15	12	10	5
290. Heifer, calved July 1, 1917 to June 30, 1918, open	20	15	12	10	5
291. Heifer, calved July 1, 1917 to June 30, 1918, bred by Exhibitor	20	15	12	10	5
292. Heifer, calved July 1, 1918 to Dec. 31, 1918	12	10	8	6	4
293. Heifer, calved on or after Jan. 1, 1919..	12	10	8	6	4
294. Female, any age, shown by an Amateur Exhibitor	12	10	8	6	4
295. Senior Champion Female, two years of over		Ribbon			
296. Junior Champion Female, under two years		Ribbon			
297. Grand Champion Female		Diploma			

The Holstein-Friesian Association of Canada, W. A. Clemens, Secretary, St. George, Ontario, donates \$125 towards the following classes:

Class	1st	2nd	3rd	4th
298. Graded Herd, bull, two years or over; cow three years or over; heifer, two years; heifer, one year; heifer under one year	\$20	\$15	\$10	\$ 5
299. Junior Herd, one bull and three females, all calved on or after July 1, 1917, and bred by Exhibitor	20	15	10	5
300. Three, either sex, calved on or after July 1, 1918, bred by Exhibitor	20	15	10	5
301. Three, any age, either sex, bred by Exhibitor and sired by one bull	20	15	10	5
302. Two, any age, either sex, bred by Exhibitor, and the progeny of one cow	20	15	10	5

Amateur Exhibitors See General Rule 14



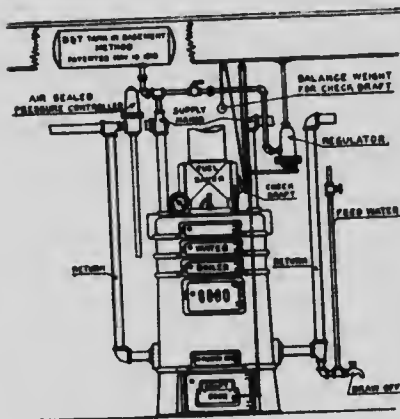
Plumbing and Hot Water Heating

And Septic Tank Systems of Sewage Disposal for Country Homes.

D. & T. Self-regulating Hot Water Heating Systems, gives you comfort, simplicity and economy.

Among our Rural Customers are:

- W. J. Shaw, Imperial.
- H. Teltzens, Kenaston.
- F. Noian, Rouleau.
- W. Allan, Grand Coulee.
- C. Kyles, Richardson.
- W. C. Bradley, Keddleston.
- A. A. Downey, Arlington Beach.
- J. R. Street, Stoney Beach.
- J. R. Gordon, Cupar.
- R. D. Gullacher, Imperial.
- G. Hummel, Nokomis.
- H. James, Fort Qu'Appelle.



VAGG, WILSON & CO.

Sanitary and Heating Engineers

1801 Retallack St.

Phone 3602.

Regina

AYRSHIRES

Each animal entered in these classes must be recorded in the name of the Exhibitor in the Canadian Ayrshire Herd Book.

Class	1st	2nd	3rd	4th
303. Bull, calved previous to July 1, 1916	\$25	\$15	\$12	\$10
304. Bull, calved July 1, 1916 to June 30, 1917....	20	15	12	10
305. Bull, calved July 1, 1917 to June 30, 1918 open	20	15	12	10
306. Bull, calved July 1, 1917 to June 30, 1918, bred by Exhibitor	20	15	12	10
307. Bull, calved July 1, 1918 to Dec. 31, 1918....	12	10	8	6
308. Bull, calved on or after Jan. 1, 1919	12	10	8	6
309. Bull, any age, shown by an Amateur Exhi- bitor	12	10	8	6
310. Senior Champion Bull, two years or over..	Ribbon			
311. Junior Champion Bull, under two years	Ribbon			
312. Grand Champion Bull	Diploma			
313. Cow, calved previous to July 1, 1916	25	15	12	10
314. Heifer, calved July 1, 1916 to June 30, 1917..	20	15	12	10
315. Heifer, calved July 1, 1917 to June 30, 1918, open	20	15	12	10
316. Heifer, calved July 1, 1917 to June 30, 1918 bred by Exhibitor	20	15	12	10
317. Heifer, calved July 1, 1918 to Dec. 31, 1918..	12	10	8	6
318. Heifer, calved on or after Jan. 1, 1919	12	10	8	6
319. Female, any age, shown by Amateur Exhi- bitor	12	10	8	6
320. Senior Champion Female, two years or over	Ribbon			
321. Junior Champion Female, under two years..	Ribbon			
322. Grand Champion Female	Diploma			

The Canadian Ayrshire Breeders' Association, W. F. Stephen, Secre-
tary, Huntingdon, Quebec, donates \$50 towards the following classes:

Class	1st	2nd	3rd	4th
323. Graded Herd, bull, two years of over; cow three years or over; heifer, two years; heifer, one year; heifer under one year....	\$15	\$10	\$ 8	\$ 5
324. Junior Herd, one bull and three females, all calved on or after July 1, 1917 and bred by Exhibitor	15	10	8	5
325. Three, either sex, calved on or after July 1, 1918, bred by Exhibitor	15	10	8	5
326. Four animals, get of one sire, either sex, any age, bred and owned by the Exhibitor	15	10		
327. Two animals, progeny of one cow, either sex, any age, bred and owned by the Exhibitor..	15	10		

Live Stock Entries Close July 17th

THE NEW 1919

MALTESE CROSS TIRES



The New 1919
"Continuous Tread"
on the
Maltese Cross
Non-Skid

Is such a real big improvement that we want every motorist who is keen on long mileage and freedom from tire trouble to give this pattern-tread tire a trial.

Gutta Percha & Rubber, Limited

Saskatchewan Branches

REGINA

SASKATOON

PRIZE LIST

DUAL PURPOSE SHORTHORNS

Each animal entered in these classes must be recorded in the name of the Exhibitor in the Dominion Shorthorn Herd Book.

The Dominion Shorthorn Breeders' Association, G. E. Day, Secretary, Guelph, Ontario, donates \$100 towards the following classes:

Class	1st	2nd	3rd	4th	5th
328. Cow, calved previous to July 1, 1916, to be shown in milk					
329. Heifer, calved on or after July 1, 1916, to be shown in milk	\$30	\$25	\$20	\$15	\$10
	30	25	20	15	10

JERSEYS, GUERNSEYS AND BROWN SWISS

Each animal entered in these classes must be recorded in the name of the Exhibitor in the Canadian National Live Stock Records.

Class	1st	2nd	3rd	4th
330. Bull, calved previous to July 1, 1916.....	\$15	\$10	\$5	\$2
331. Bull, calved July 1, 1917 to July 1, 1916....	10	6	4	2
332. Bull, calved July 1, 1918 to July 1, 1917	8	5	3	2
333. Bull, calved on or after July 1, 1918	8	5	3	2
334. Cow, calved previous to July 1, 1916	15	10	5	2
335. Heifer, calved July 1, 1917 to July 1, 1916 ..	10	6	4	2
336. Heifer, calved July 1, 1918 to July 1, 1917 ..	8	5	4	2
337. Heifer, calved on or after July 1, 1918	8	5	3	2
338. Herd, Bull and three Females, over one year, owned by one Exhibitor	20	10	5	2

RED POLLED OR ANY OTHER PURE BRED BEEF OR DAIRY CATTLE

Not Otherwise Provided For

Each animal entered in these classes must be recorded in the name of the Exhibitor in the Canadian National Live Stock Records.

Class	1st	2nd	3rd
339. Bull, calved previous to July 1, 1916	\$15	\$10	\$5
340. Bull, calved July 1, 1917 to July 1, 1916	10	6	4
341. Bull, calved July 1, 1918 to July 1, 1917	8	5	3
342. Bull, calved on or after July 1, 1918	8	5	3
343. Cow, calved previous to July 1, 1916	15	10	5
344. Heifer, calved July 1, 1917 to July 1, 1916	10	6	4
345. Heifer, calved July 1, 1918 to July 1, 1917	8	5	4
346. Heifer, calved on or after July 1, 1918	8	5	3
347. Herd, Bull and three Females, over one year owned by one exhibitor	20	10	5

TIRE REPAIRING

Our retreads give good mileage—We have one of the most up-to-date plants in Western Canada. Look for our Curb Free Air Station.

1720 Scarth St.
Regina
Phone 3824

TIRE SERVICE COMPANY

150 2nd Ave. N.
Saskatoon

The Up-to-Date Tire Shop

Phone 4598

The Saskatchewan Life Insurance Company

Authorized and Subscribed Capital\$1,000,000.00
Paid Up Capital 100,000.00

The only Life Insurance Company with Head Office in Saskatchewan.

We Solicit Your Patronage and Support.

Head Office, Darke Block, Regina Saskatchewan.

Chas. Willoughby, President, T. F. Conrod, Managing Director

BROOK & ALLISON

1825 Scarth St., over G.T.P. Ticket Office.

Phone 5688

We have a large list of good IMPROVED FARMS for sale, also Prairie. If you want to sell a farm, list it with us.

HOUSES—We have some splendid bargains in modern and semi-modern houses, also some choice lots at very reasonable prices.

We also specialize in Rentals, Fire Insurance and Loans. When in the city call at the office, or write us and we will give you good service.



SHEEP

SPECIAL RULES

1. All general rules which are applicable will apply to this department.
2. At the time of making entry the following information must be given regarding each pure-bred sheep entered.
 1. The name or flock number of the animal.
 2. The date of birth.
 3. The animal's registration number in the Canadian National Records.
3. If required the exhibitors must make a statutory declaration that the animals are of the ages stated by them.
4. A lamb must be dropped after January 1, 1919.
5. No entry fee is charged on pens, but all sheep shown in pens must have been entered and shown in sections for single animals.
6. All sheep dropped previous to Jan. 1, 1919, must have been shorn in 1918.
7. Exhibitors desiring to compete in the classes for amateur exhibitors will note General Rule No. 14 on page 13 of the prize list. Animals shown in classes for amateurs exhibitors may also be shown in other classes to which they are eligible and duly entered.

SOUTHDOWNS

Certificate of registration in the name of the Exhibitor in the Canadian National Live Stock Records will be required.

Class		1st	2nd	3rd	4th
400.	Ram, two shears or over	\$10	\$ 8	\$ 6	\$ 4
401.	Ram, shearling	10	8	6	4
402.	Ram, lamb	10	8	6	4
403.	Ram, any age, shown by an amateur exhibitor	10	8	6	4
404.	Best Ram, any age	Diploma			
405.	Ewe, two shears or over	10	8	6	4
406.	Ewe, shearling	10	8	6	4
407.	Ewe, lamb	10	8	6	4
408.	Ewe, any age, shown by an amateur exhibitor	10	8	6	4
409.	Best Ewe, any age	Diploma			
410.	Pen, ram, two ewes, and two lambs	10	5	4	

Live Stock Entries Close July 17th

EARLY IN THE SEASON

Secure a Hail Policy issued by

The Eagle, Star and British Dominions Insurance Co., Ltd.

of London, England

Assets Exceed \$65,000,000.00

See our Nearest Agent or Write to 36 Canada
Life Building, Regina.

Paddock's Boot Shop **FOR GOOD SHOES**

SELLING A DISTINCTIVE STYLE AT A MEDIUM
PRICE



Men's Black or Brown, soft elk
upper, sewed and reinforced
soles, toe cap; guaranteed solid
leather; sizes 6 to 11. **\$5.50**
Price

Boys', same as above, black elk;
sizes 1 to 5. **\$3.50**
Price

POSTAGE PAID TO ANY ADDRESS

Paddock's Boot Shop

Corner 11th Avenue and Cornwall Street

PRIZE LIST

59

SHROPSHIRE

Certificate of registration in the name of the Exhibitor in the Canadian National Live Stock Records will be required.

Class		1st	2nd	3rd	4th
411.	Ram, two shears or over				
412.	Ram, shearing	\$10	\$ 8	\$ 6	\$ 4
413.	Ram, lamb	10	8	6	4
414.	Ram, any age, shown by an amateur exhibitor	10	8	6	4
415.	Best ram, any age	10	8	6	4
416.	Ewe, two shears or over	Diploma			
417.	Ewe, shearing	10	8	6	4
418.	Ewe, lamb	10	8	6	4
419.	Ewe, any age, shown by amateur exhibitor..	10	8	6	4
420.	Best Ewe, any age	10	8	6	4
421.	Pen, ram, two ewes, and two lambs	12	8		4

OXFORD DOWNS

Certificate of registration in the name of the Exhibitor in the Canadian National Live Stock Records will be required.

Class		1st	2nd	3rd	4th
422.	Ram, two shears or over				
423.	Ram, shearing	\$10	\$ 8	\$ 6	\$ 4
424.	Ram, lamb	10	8	6	4
425.	Ram, any age, shown by an amateur exhibitor	10	8	6	4
426.	Best Ram, any age	10	8	6	4
427.	Ewe, two shears or over	Diploma			
428.	Ewe, shearing	10	8	6	4
429.	Ewe, lamb	10	8	6	4
430.	Ewe, any age, shown by an amateur exhibitor	10	8	6	4
431.	Best Ewe, any age	10	8	6	4
432.	Pen, ram, two ewes, and two lambs	10	5		4

SUFFOLK DOWNS OR HAMPSHIRE

Certificate of registration in the name of the Exhibitor in the Canadian National Live Stock Records will be required.

Class		1st	2nd	3rd	4th
433.	Ram, two shears or over				
434.	Ram, shearing	\$10	\$ 8	\$ 6	\$ 4
435.	Ram, lamb	10	8	6	4
436.	Ram, any age, shown by amateur exhibitor..	10	8	6	4
437.	Ram, any age	10	8	6	4
438.	Ewe, two shears or over	Diploma			
439.	Ewe, shearing	10	8	6	4
440.	Ewe, lamb	10	8	6	4
441.	Ewe, any age, shown by amateur exhibitor..	10	8	6	4
442.	Ewe, any age	10	8	6	4
443.	Pen, ram, two ewes and two lambs	10	5		4

Amateur Exhibitors See General Rule 14



CHEVROLET MOTOR CARS

have made good in the West where road and climatic conditions demand a staunch, well-built efficient and powerful motor car.

The Chevrolet is equipped with electric starter, electric lights, demountable rims, one-man top; in fact, has every necessary attachment for comfort and convenience in motoring. The Chevrolet has the selective sliding gear transmission with three speeds forward and reverse. Many other new features make the new Chevrolet the best buy in Canadian motor car values.

Three models—490—F.B.—Baby Grand—and Model T Truck. Models 490 and F.B. are supplied in Roadster, Touring, and Sedan Type.

See the nearest CHEVROLET dealer for a demonstration.

CHEVROLET MOTOR CO.

OF CANADA, LIMITED
OSHAWA, ONT.

Western Parts and Distributing Branch
REGINA, SASK.

REGINA DEALER, MASTERTON MOTOR CO.
Show Room, 1706 Scarth St. Service Station, 1741 Broad St.

LEICESTERS

Certificate of registration in the name of the Exhibitor in the Canadian National Live Stock Records will be required.

Class		1st	2nd	3rd	4th
444.	Ram, two shears or over	\$10	\$ 8	\$ 6	\$ 4
445.	Ram, shearing	10	8	6	4
446.	Ram, lamb	10	8	6	4
447.	Ram, any age, shown by amateur exhibitor..	10	8	6	4
448.	Best Ram, any age	Diploma			
449.	Ewe, two shears or over	10	8	6	4
450.	Ewe, shearing	10	8	6	4
451.	Ewe, lamb	10	8	6	4
452.	Ewe, any age, shown by amateur exhibitor..	10	8	6	4
453.	Best Ewe, any age	Diploma			
454.	Pen, ram, two ewes, and two lambs	10	5	4	

ANY OTHER PURE BREED

Certificate of registration in the name of the Exhibitor in the Canadian National Live Stock Records will be required.

Class		1st	2nd	3rd
455.	Ram, two shears or over	\$10	\$ 7	\$ 4
456.	Ram, shearing	10	7	4
457.	Ram, lamb	10	7	4
458.	Ram, any age, shown by amateur exhibitor.....	10	7	4
459.	Best Ram, any age	Diploma		
460.	Ewe, two shears or over	10	7	4
461.	Ewe, shearing	10	7	4
462.	Ewe, lamb	10	7	4
463.	Ewe, any age, shown by amateur exhibitor.....	10	7	4
464.	Best Ewe, any age	Diploma		
465.	Pen, ram, two ewes, and two lambs	10	5	

GRADE SHEEP

Class		1st	2nd	3rd	4th
466.	Ewe, aged, with 1919 lamb at foot	\$ 8	\$ 6	\$ 4	\$ 2
467.	Ewe, shearing	8	6	4	2
468.	Ewe, lamb	8	6	4	2
469.	Pen, two ewes, and two ewe lambs	8	6	4	2

FLEECE WOOL

Class		1st	2nd	3rd	4th	5th	6th	7th
470.	Range, fine medium	\$ 6	\$ 5	\$ 4	\$ 3	\$ 2		
471.	Range, medium	6	5	4	3	2		
472.	Domestic, fine medium	6	5	4	3	2		
473.	Domestic, medium	10	8	6	5	4	3	2
474.	Domestic, coarse	6	5	4	3	2		

Complete fleeces in the grease alone will be accepted. Exhibits must have been produced in Saskatchewan by residents of the province. Manufacturers and dealers are excluded from competition.

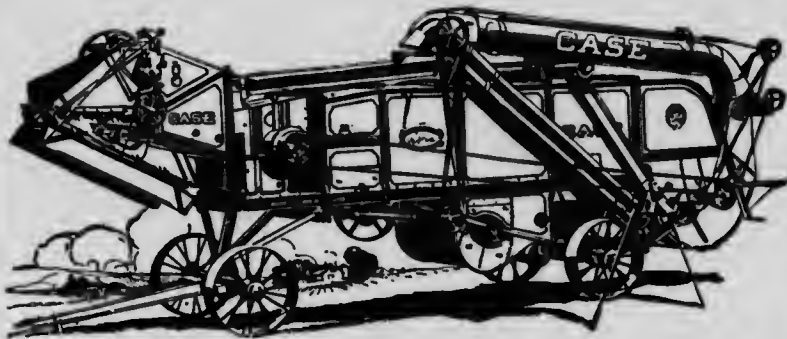
Arrangements will be made to dispose of all fleeces at the conclusion of the exhibition.

J. I. CASE

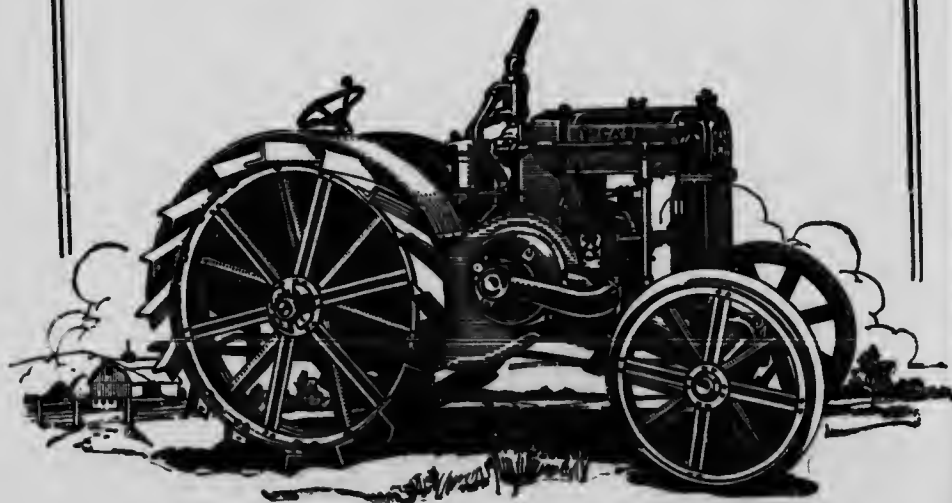
Threshing Machine Co.

Cor. 8th Ave. and Broad St.

Regina, Sask.



We have a full and complete line of all size Oil Tractors, Steam Tractors, Plows and Separators. See our new light Separators built for all size Tractors.



SWINE

SPECIAL RULES

1. All general rules which are applicable will apply to this department.
2. At the time of making entry the following information must be given regarding each pure bred animal entered.
 1. The name of the animal.
 2. Its registration number in the Canadian National Record.
 3. The date of its birth.
 3. The age of all animals to be computed to July 1.
 4. If required, exhibitors must make a statutory declaration that the animals are of the age stated by them.
 5. Boars with tusks will not be eligible to compete nor shall they be admitted to the grounds.
 6. Breeding sows must have had pigs during the calendar year or be in pig when shown.
 7. Hogs shall not be artificially colored. Any exhibitor breaking this rule may have all his hogs disqualified and forfeit any prize money awarded to him.
 8. Exhibitors desiring to compete in the classes for amateur exhibitors will note General Rule No. 14 on page 13 of the prize list. Animals shown in classes for amateur exhibitors may also be shown in other classes to which they are eligible and duly entered.

IMPROVED YORKSHIRES

Certificate of registration in the name of the Exhibitor in the Canadian National Live Stock Records will be required.

Class	1st	2nd	3rd	4th
500. Boar, two years or over	\$10	\$ 7	\$ 5	\$ 3
501. Boar, over one and under two years	10	7	5	3
502. Boar, over six and under twelve months	10	7	5	3
503. Boar, under six months	10	7	5	3
504. Boar, any age, shown by amateur exhibitor	10	7	5	3
505. Best Boar, any age	Diploma			
506. Sow, two years or over	10	7	5	3
507. Sow, over one year and under two	10	7	5	3
508. Sow, over six months and under twelve	10	7	5	3
509. Sow, under six months	10	7	5	3
510. Sow, any age, shown by amateur exhibitor	10	7	5	3
511. Best Sow, any age	Diploma			
512. Boar and three Sows, any age	10	5	3	
513. Four Pigs, under six months old, the get of one boar, bred and owned by Exhibitor	10	5	3	
514. Four Pigs, under six months old, the produce of one sow, bred and owned by Exhibitor ..	10	5	3	

Live Stock Entries Close July 17th



We Can Save You Money on

AUTO TIRES

All Makes and Sizes in Stock.

TIRE REPAIRING



We have installed the most modern and complete VULCANIZING PLANT in Western Canada. Get from 3000 to 5000 more miles out of your old tires by having us retread them. Plain, Ribbed or Non-Skid Treads put on. All work fully guaranteed.

WESTERN CYCLE & MOTOR CO.

Phone 2207.

1769 Hamilton St.

Beside City Hall

GENCO LIGHT

LIGHT YOUR PLACE AND SAVE YOUR BACK

The Genco Light does more than merely furnish electric light, the cleanest, safest, brightest, artificial light known. It supplies power in two ways—electric and belt power—and each can be employed to make the daily tasks of the women folk easier, and lighten the work connected with the daily chores of the men.

GENCO LIGHT

is a compact plant in three parts, the engine and generator in one unit mounted on the same base, and the batteries. It does not take up as much room as a small kitchen table, and can be easily installed in cellar, out-building, or convenient shed. It is self-starting, pressing a button does it. Requires no attention when running. It stops itself automatically when it should stop. Always ready for work and runs on any fuel, kerosene, gasoline or alcohol.

You have been wanting electricity on your place. The Genco Plant is the plant you have been waiting for—the plant that gives more for every dollar than any machine you ever bought.

Apply for full details and interesting literature.

Genco Electrical Engineering Co., Limited

C. F. SMITH, Manager

1766 Osler Street

Regina, Sask.

BERKSHIRES

Certificate of registration in the name of the Exhibitor in the Canadian National Live Stock Records will be required.

Class	1st	2nd	3rd	4th
515. Boar, two years or over	\$10	\$ 7	\$ 5	\$ 3
516. Boar, over one and under two years	10	7	5	3
517. Boar, over six and under twelve months ..	10	7	5	3
518. Boar, under six months	10	7	5	3
519. Boar, any age, shown by amateur exhibitor	10	7	5	3
520. Best Boar, any age	Diploma			
521. Sow, two years or over	10	7	5	3
522. Sow, over one and under two years	10	7	5	3
523. Sow, over six and under twelve months	10	7	5	3
524. Sow, under six months	10	7	5	3
525. Sow, any age, shown by amateur exhibitor..	10	7	5	3
526. Best Sow, any age	Diploma			
527. Boar and Three Sows, any age	10	5	3	
528. Four Pigs, under six months old, the get of one boar, bred and owned by exhibitor	10	5	3	
529. Four Pigs, under six months old, the produce of one sow, bred and owned by exhibitor..	10	5	3	

POLAND CHINAS

Certificate of registration in the name of the Exhibitor in the Canadian National Live Stock Records will be required.

Class	1st	2nd	3rd
530. Boar, two years or over	\$10	\$ 7	\$ 4
531. Boar, over one and under two years	10	7	4
532. Boar, over six and under twelve months	10	7	4
533. Boar, under six months	10	7	4
534. Boar, any age, shown by amateur exhibitor....	10	7	4
535. Best Boar, any age	Diploma		
536. Sow, two years or over	10	7	4
537. Sow, over one and under two years	10	7	4
538. Sow, over six and under twelve months	10	7	4
539. Sow, under six months	10	7	4
540. Sow, any age, shown by amateur exhibitor	10	7	4
541. Best Sow, any age	Diploma		
542. Boar, any age, and Three Sows, any age	10	5	3
543. Four Pigs, under six months old, the get of one boar, bred and owned by exhibitor	10	5	3
544. Four Pigs, under six months old, the produce of one sow, bred and owned by exhibitor	10	5	3

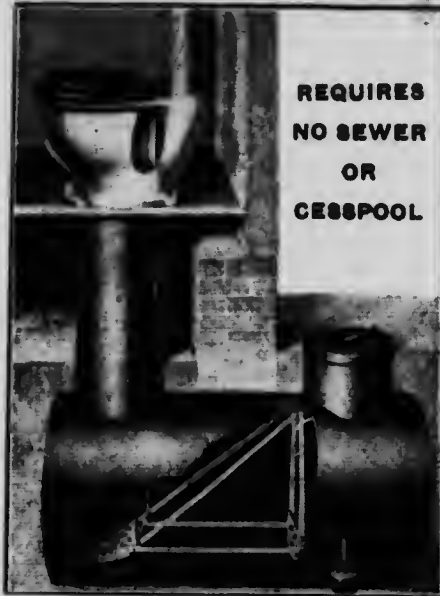
DUROC JERSEYS

Certificate of registration in the name of the Exhibitor in the Canadian National Live Stock Records will be required.

Class	1st	2nd	3rd
545. Boar, two years or over	\$10	\$ 7	\$ 4
546. Boar, over one and under two years	10	7	4
547. Boar, over six and under twelve months	10	7	4
548. Boar, under six months	10	7	4

See Class for Boy and Girl Exhibitors, Page 71

Waterbury Sanitary Caustic Closet



Where sewer and water are not available the Waterbury will give you perfect satisfaction. Country churches, stores, summer homes, rest rooms, schools, factories, and especially farm houses, should be so equipped.

City conveniences in country homes is what the Waterbury Sanitary Caustic Closet brings.

Only Requires Emptying Once or Twice a Year

GUARANTEED ODORLESS

The Waterbury Closet costs little more than an outdoor privy—every farm home should be equipped.

Write us today for catalogue and more details—Draw a rough pencil plan of the rooms in your house and we'll send you back a plan showing where closet should be installed and the cost.

The Waterman-Waterbury Mfg. Co. Limited

Donahue Bldg., Regina, Sask.

GEO. E. GOODWIN

Artistic Wallpapers.

2304 11th Ave., Regina

PRIZE LIST

DUROC JERSEYS—(Continued)

549.	Boar, any age, shown by amateur exhibitor	10	7	4
550.	Best Boar, any age	Diploma		
551.	Sow, two years or over	10	7	4
552.	Sow, over one and under two years	10	7	4
553.	Sow, over six and under twelve months	10	7	4
554.	Sow, under six months	10	7	4
555.	Sow, any age, shown by amateur exhibitor	10	7	4
556.	Best Sow, any age	Diploma		
557.	Boar, any age, and Three Sows, any age	10	5	3
558.	Four Pigs, under six months old, the get of one boar, bred and owned by exhibitor	10	5	3
559.	Four Pigs, under six months old, the produce of one sow, bred and owned by exhibitor	10	5	3

TAMWORTHS

Certificate of registration in the name of the Exhibitor in the Canadian National Live Stock Records will be required.

Class		1st	2nd	3rd
560.	Boar, two years or over	\$10	\$ 7	\$ 4
561.	Boar, over one and under two years	10	7	4
562.	Boar, over six and under twelve months	10	7	4
563.	Boar, under six months	10	7	4
564.	Boar, any age, shown by amateur exhibitor	10	7	4
565.	Best Boar, any age	Diploma		
566.	Sow, two years or over	10	7	4
567.	Sow, over one and under two years	10	7	4
568.	Sow, over six and under twelve months	10	7	4
569.	Sow, under six months	10	7	4
570.	Sow, any age shown by amateur exhibitor	10	7	4
571.	Best Sow, any age	Diploma		
572.	Boar, any age, and three sows any age	10	5	3
573.	Four Pigs, under six months old, the get of one boar, bred and owned by exhibitor	10	5	3
574.	Four Pigs, under six months old, the produce of one sow, bred and owned by exhibitor	10	5	3

ANY OTHER PURE BREED

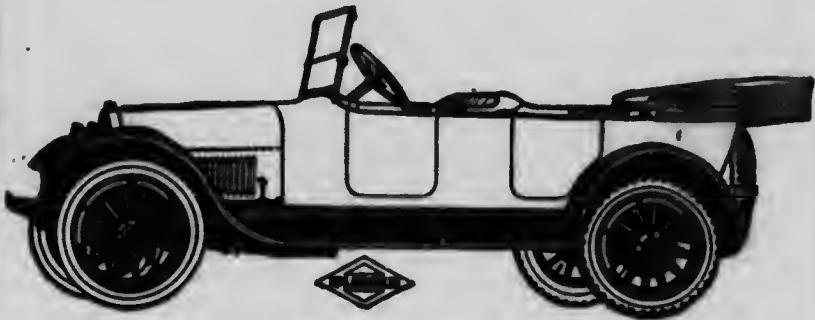
Certificate of registration in the name of the Exhibitor in the Canadian National Live Stock Records will be required.

Class		1st	2nd	3rd
575.	Boar, two years or over	\$10	\$ 7	\$ 4
576.	Boar, over one and under two years	10	7	4
577.	Boar, over six and under twelve months	10	7	4
578.	Boar, under six months	10	7	4
579.	Boar, any age, shown by amateur exhibitor	10	7	4
580.	Best Boar, any age	Diploma		
581.	Sow, two years or over	10	7	4
582.	Sow, over one and under two years	10	7	4
583.	Sow, over six and under twelve months	10	7	4
584.	Sow, under six months	10	7	4

Amateur Exhibitors See General Rule 14

McLaughlin

MASTER SIXES



H 6-49 Seven Passenger

Master Engineers combined their efforts with Master Artists to produce the McLaughlin Master Six. The result is a car worthy of the highest manufacturing ideals—a car appropriately called the

MASTER SIX

CANADA'S STANDARD CAR

See These Cars at our Local Showrooms, Corner Broad and 14th

McLaughlin Carriage Company
Limited

REGINA, SASK.

GEO. E. GOODWIN
Painter and Decorator. 2304 11th Ave., Regina

PRIZE LIST

69

ANY OTHER PURE BREED--(Continued)

585.	Sow, any age, shown by amateur exhibitor	10	7	4
586.	Best Sow, any age	Diploma		
587.	Boar, any age, and Three Sows, any age	10	5	3
588.	Four Pigs, under six months old, the get of one boar, bred and owned by exhibitor	10	5	3
589.	Four Pigs, under six months old, the produce of one sow, bred and owned by exhibitor	10	5	3

SPECIAL FOR DUROC JERSEYS

Donated by the American Duroc Jersey Record Association, Robert J. Evans, Secretary, Chicago, Ill.

Class.

590. Best Duroc Jersey Herd, 1 boar and 3 sows, any age; 1st, \$12.50; 2nd, Reserve Ribbon.

SPECIAL

Donated by the Saskatchewan Swine Breeders' Association, J. G. Robertson, Secretary, Regina.

591. Best pair of pure-bred pigs, boar and sow, any age, of a bacon type breed. Prize\$25
592. Best pair of pure-bred pigs, boar and sow, any age of a lard type breed. Prize\$25

All exhibitors showing in this class must be members of the Saskatchewan Swine Breeders Association.

Save Your Teeth

Save Your Time

Save Your Money



BY HAVING

DR. S. B. RITNER

DO YOUR DENTAL WORK WHILE YOU ARE
ENJOYING THE EXPOSITION

101-103 KERR BLOCK.

PHONE 5812

Next McCallum Hill Bldg.

WHEN YOU BUILD YOUR NEW HOUSE

HAVE

POTTS & SMITH

Plumbers and Steam Fitters

Estimate on Your Plumbing and Heating.

We have the best system known.

All estimates free.

1841 Cornwall St.

Regina, Sask.

GEO. E. GOODWIN

Sells Canada Paint, Valspar Varnish, 2304 11th Ave., Regina

COMPETITION FOR BOY AND GIRL EXHIBITORS OF LIVE STOCK AND POULTRY

SPECIAL RULES

1. Open to exhibits by boys or girls born between January 1, 1903, and December 31, 1906.
2. Exhibitor must have fed, cared for and fitted the exhibit continuously since June 1st, 1919.
3. One or more entries may be made from one farm or family by different boys or girls, but only one entry may be made by any one boy or girl in each section.
4. Exhibits entered in this class may also be entered and shown in all other sections to which they may be eligible.
5. Exhibits in this class may not be the property of the exhibitor and may be shown in the open section by the parent or guardian of the boy or girl.
6. In making entry the name, address and date of birth of exhibitor must be furnished. Parents or guardians or employers must certify to the boys' or girls' age and that he or she has taken charge of, fed and cared for the exhibit continuously since June 1st, 1919. No entry will be accepted unless this certificate accompanies the entry.
7. No entry fee will be charged for entries in this class. If the exhibits are also entered in the open classes the regular entry fee will be charged for such entries in the open classes.
8. Entries close Thursday, July 17th, 1919.

PRIZES

Class	1st	2nd	3rd	4th	5th	6th
610. Colt, male or female, foaled in 1918	\$20	\$15	\$10	\$ 7	\$ 5	\$ 3
611. Calf, male or female, calved in 1918	20	15	10	7	5	3
612. Lamb, male or female, dropped in 1918	10	8	6	5	4	3
613. Pig, male or female, littered in 1918	10	8	6	5	4	3
614. Pen of cock and two hens, hatched in 1918	10	8	6	5	4	3

SPECIALS

Donated by the Canadian Bank of Commerce, A. W. Ridout, Manager, Regina, Sask. Competition open only to exhibitors showing animals bred and raised in the Province of Saskatchewan.

Class

615. Best Calf shown in Class 611, prize, Bank of Commerce Silver medal.
616. Best Pig shown in Class 613, prize, Bank of Commerce Bronze medal.

Live Stock Entries Close July 17th

SAWYER-MASSEY

(CANADIAN BUILT)

TRACTORS AND THRESHERS

TRACTORS

Standardized Tractors of the same general appearance and design in four sizes: 11-22, 17-34, 20-40 and 25-50 horse power. All are equipped with four-cylinder kerosene-burning motors, two-speed gearing, spring-mounted brass-tube radiators, high-tension ignition, with impulse starter (no batteries). One of the features of these Tractors is the almost total absence of vibration, which means the tractors are not hard on themselves, do not shake loose, and furnish a steady stream of power to drawbar or belt without jerk, jar or vibration. All these tractors are conservatively rated, have an abundance of reserve power, and the two-speed gearing makes them flexible, powerful and instantly convertible from steady, powerful pullers for plowing and heavy work, to fast haulers, with sufficient speed to pull binders, harrows, and for freighting on the road.



THRESHERS

For coupling with tractor power we manufacture what we call our No. 1 and No. 2 Individual Threshers, sizes 22x36 and 28x44 respectively. The 22x36 machine couples with tractors of 10-20 to 12-25 horsepower, and the 28x44 separator with 15-30 tractors. These are light-running threshers, with few belts, designed for doing a farmer's own work and that of a few of his neighbors. They are easy to look after and care for, and are so evenly balanced that even when running at full threshing speed it is possible to balance a spike on the ellis.

We manufacture three larger sizes of separators than the above, suitable for steam power and custom work; we also have the only combination threshing outfit on the market mounted on a six-wheel truck, and equipped with a four-cylinder kerosene-burning motor.

Be sure to see our exhibit on Regina Fair Grounds, also at our warehouse, corner Halifax St. and Eighth Ave., Regina.

SAWYER-MASSEY CO. LIMITED

(Founded 1837)

HAMILTON, ONT., WINNIPEG, REGINA, SASKATOON, CALGARY

GEO. E. GOODWIN
For Pictures and Picture Framing. 2304 11th Ave., Regina



POULTRY

SPECIAL RULES

1. All general rules which are applicable will apply to this department.
2. Entries should be made on or before Wednesday, July 16th, on the regular entry form which will be found in the prize list. Entries postmarked or made after July 16th will be charged 25 per cent. extra.
3. An entrance fee of 50 cents will be charged for each pen and must accompany the entry.
4. Transportation charges on exhibits must be prepaid by the exhibitor and properly marked to Superintendent, Poultry Department, Provincial Exhibition, Regina. The Superintendent will coop such birds on their arrival at the Exhibition, care for them and return them after the close of the Exhibition.
5. All shipping coops must be properly addressed for the return journey.
6. All specimens must be exhibited in their natural condition.
7. All birds competing for premiums must be the bona fide property of the exhibitor.
8. All birds shall be judged by comparison. The revised American Standard of Perfection shall be the guide of the judges on all varieties mentioned therein.
9. All exhibits must be delivered at the Poultry Building before 12 o'clock noon on Monday, July 28th.
10. No diseased bird shall be allowed on the Exhibition grounds if any such is admitted through an oversight, the exhibitor shall remove the same on order from the Superintendent.
11. Each pen of fowls is to consist of one male and four females, any age. Each pen of turkeys, geese or ducks is to consist of one male and two females. All pens judged as exhibition pens.
12. An exhibitor of Poultry will not be permitted to enter more than four varieties or more than two pens in any one variety.

Poultry Entries Close July 16th

MUSIC IN THE HOME

IS SUNSHINE FOR THE SOUL



And You Can Have It On Your Own Terms

Many homes are today suffering from an undercurrent of gloom caused by the late war. They need something to overcome this depression and music is the one thing that will do it.

Homes where soldiers have returned are especially in need of music, for there is nothing to equal it to chase the gloom away and bring about a spirit of light-heartedness and sunshine in the soul.

Why Don't You Buy A Piano?

We offer you your choice of eight beautiful styles of the famous Heintzman Piano and there is nothing on the market to equal it for richness of tone or beauty of workmanship. It's a piano you will always be proud of. And

YOU CAN BUY ONE ON YOUR OWN TERMS

If you cannot afford a Piano now there's a thousand reasons why you should have a

VICTOR VICTROLA

In your home without a day's delay. We have all available styles and prices to suit you.

Write us for Particulars.



Ye Olde Firme

HEINTZMAN & CO.

1859 Scarth Street

Regina

GEO. E. GOODWIN
Artistic Wallpapers.

2304 11th Ave., Regina

PRIZE LIST

PRIZES

Class		1st	2nd	3rd	4th	5th	6th
630.	Wyandottes, White, pen	\$10	\$ 8	\$ 6	\$ 5	\$ 4	\$ 2
631.	Wyandottes, Buff, pen	10	8	6	5	4	2
632.	Wyandottes, Silver Laced, pen..	10	8	6	5	4	2
633.	Wyandottes, A.O.V., pen	10	8	6	5	4	2
634.	Plymouth Rocks, Barred, Light, pen	10	8	6	5	4	2
635.	Plymouth Rocks, Barred, Dark, pen	10	8	6	5	4	2
636.	Plymouth Rocks, White, pen.....	10	8	6	5	4	2
637.	Plymouth Rocks, A.O.V., pen ...	10	8	6	5	4	2
638.	Rhode Island Reds, single comb, pen	10	8	6	5	4	2
639.	Rhode Island Reds, Rose comb, pen	10	8	6	5	4	2
640.	Brahmas, any variety, pen	10	8	6	5	4	2
641.	Asiatic, A.O.V., pen	10	8	6	5	4	2
642.	Orpingtons, Buff, pen	10	8	6	5	4	2
643.	Orpingtons, Black, pen	10	8	6	5	4	2
644.	Orpingtons, White, pen	10	8	6	5	4	2
645.	English, A.O.V., pen	10	8	6	5	4	2
646.	Leghorns, White, single comb, pen	10	8	6	5	4	2
647.	Leghorns, Brown, single comb, pen	10	8	6	5	4	2
648.	Leghorns, Brown, rose comb, pen	10	8	6	5	4	2
649.	Leghorns, Buff, pen	10	8	6	5	4	2
650.	Minorcas, any variety, pen	10	8	6	5	4	2
651.	Mediterranean, A.O.V., pen	10	8	6	5	4	2
652.	A.O.V. Utility Fowl, pen	10	8	6	5	4	2
653.	Turkeys, any variety, pen	10	8	6	5	4	2
654.	Geese, any variety, pen	10	8	6	5	4	2
655.	Ducks, any variety, pen	10	8	6	5	4	2

**EGGS. FRESH GATHERED
FOR PRODUCERS ONLY**

Class		1st	2nd	3rd	4th	5th
660.	One dozen, Specials	\$ 3	\$ 2	\$ 1	\$.50	
661.	One dozen, Extras	3	2	1	.50	
662.	One dozen, No. 1's	3	2	1	.50	
663.	Six dozen, Specials	5	4	3	2.00	\$ 1
664.	Six dozen, Extras	5	4	3	2.00	1
665.	Six dozen, No. 1's	5	4	3	2.00	1

**EGGS. FRESH GATHERED
OPEN**

To be shown in commercial packages. Solid cases preferred to Humpty-Dumpties.

Class		1st	2nd	3rd	4th
666.	Twelve dozen, Specials	\$ 8	\$ 6	\$ 4	\$ 2
667.	Twelve dozen, Extras	8	6	4	2
668.	Twelve dozen, No. 1's	8	6	4	2
669.	One case (30 dozen), in cartons	10	7	5	3

See Class for Boy and Girl Exhibitors, Page 71

GREAT WEST SADDLERY CO.

Manufacturers of the Celebrated

HORSE SHOE

BRAND

Harness, Collars, Saddles

Branches at
Winnipeg, Calgary, Edmonton, Saskatoon, Regina

Horse Shoe Brand Goods are carried by all reliable dealers in every town in the West. Horsemen should pay particular attention when buying anything in the Harness and Saddlery Line to make sure they carry the Horse Shoe Brand—The Sign of Good Quality Goods.

Bonds, Policies, Titles

are in danger of fire and theft if left in the house.

We have many satisfied country clients using our

Deposit Boxes

Our vaults are open from 8.30 a.m. to 5.30 p.m. daily except Sunday.

The Sterling Trusts Corporation

LORNE JOHNSON, Manager

Sterling Trusts Building

Corner Rose and 11th Avenue

GEO. E. GOODWIN

Painter and Decorator.

2304 11th Ave., Regina

DEFINITIONS OF GRADES OF EGGS

SPECIALS

Eggs of uniform size weighing over 25 ounces to the dozen or over 47 lbs. net to the 30 dozen case, absolutely clean, strong and sound in shell; air cell small, not over 3-16 of an inch in depth (measured from top of shell to outer rim); white of egg to be firm and clear and yolk dimly visible, free from blood clots.

EXTRAS

Eggs of good size, weighing at least 24 ounces to the dozen or 45 lbs. net to the 30 dozen case, clean, sound in shell, air cell less than 3-8 of an inch in depth (measured from top of shell to outer rim); white of egg to be firm and yolk only slightly visible.

NO. 1's.

Eggs weighing at least 23 ounces to the dozen or 43 lbs. net to the 30 dozen case, clean, sound in shell, air cell less than 1-2 inch in depth (measured from top of cell to outer rim); white of egg to be reasonably firm; yolk may be quite visible but mobile, not stuck to the shell or seriously out of place; air cell not necessarily stationary.

DAIRY PRODUCTS

SPECIAL RULES

Butter or packages containing it must not be branded or exhibit any marks before being judged.

Packages should be covered with burlap or cotton or double boxed to prevent soiling in transit and in handling.

Packages must be such as are used for marketing the quantity of butter called for in each exhibit.

Exhibits must contain full weight of butter called for and no more, but a reasonable allowance will be made for shrinkage.

Butter should be perfectly smooth and plain on top and prints should be made without any ornamentation.

All exhibits in section 1 in the class for Creamery Butter must be in the hands of the Regina Cold Storage, Regina, on or before Saturday, June 28th.

No exhibitor will be permitted to make more than one entry in each section for Creamery Butter.

All butter exhibited in creamery butter classes must be made from gathered cream received from five or more patrons.

The judges shall have the privilege of calling for an affidavit certifying that all rules have been complied with.

Butter Entries Close July 11th

WILLYS

Overland



There Is Nothing More Contagious Than Enthusiasm

The Enthusiasm of Overland Owners.

The keen appreciation and deep respect that thousands of Overland owners so freely express, is an Overland asset of priceless value. This enthusiasm of Overland owners is our inspiration and obligation to produce cars that will perpetuate and enhance Overland prestige. The Model 90 Overland is completely fulfilling this obligation to old and new friends. Where road conditions are poor, its easy riding qualities inspire appreciation. Everywhere its operation, sturdiness, low upkeep and dependable performance constantly widen the circle of Overland friends. This enthusiasm of the spreading, contagious, inspiring kind is your safest buying guide.

WILLYS-OVERLAND LIMITED

WHOLESALE DISTRIBUTING BRANCH, REGINA, SASK.

WILLYS-KNIGHT AND OVERLAND MOTOR CARS AND
LIGHT COMMERCIAL WAGONS

GEO. E. GOODWIN

Sells Canada Paint, Valspar Varnish, 2304 11th Ave., Regina

Class 700.

CREAMERY BUTTER

Section		1st	2nd	3rd	4th	5th	6th	7th
1.	1 box of 56 lbs. after 30 days storage	\$25	\$20	\$15	\$12	\$10	\$ 8	\$ 5
2.	1 box of 20 lbs., in prints	25	20	15	12	10	8	5
3.	2 boxes of 14 lbs. each from the same churning, one box will be judged at the Exhibition and the other will be placed in cold storage and judged at time of the Saskatchewan Winter Fair, Regina, Nov. 24-28th, 1919, when an additional lot of cash prizes will be offered. Prizes at the Exhibition are							
4.	Championship, highest total score in sections 1, 2, and 3, made by a Buttermaker operating in Manitoba	25	20	15	12	10	8	5
5.	Championship, highest total score in sections 1, 2, and 3, made by a Buttermaker operating in Saskatchewan	10	Reserve Ribbon.					
6.	Championship, highest total score in sections 1, 2, and 3, made by a Buttermaker operating in Alberta	10	Reserve Ribbon.					

MOTHERWELL TROPHY

7. Hon. W. R. Motherwell, ex.-Minister of Agriculture for Saskatchewan, offers a valuable Silver Shield as a Grand Championship Prize to the Buttermaker obtaining the highest total score in sections 1, 2 and 3. This shield has to be won twice, not necessarily in succession before becoming the permanent property of the winner. It will be placed in possession of the winner and must be returned to the Manager of the Exhibition when required until won outright. Won in 1917 by the Carlyle Dairy Company, Calgary, Alta. Won in 1918 by Central Creameries, Ltd., Calgary, Alta.

Class 702.

FARM DAIRY BUTTER

Section	To be exhibited by the maker							
		1st	2nd	3rd	4th	5th	6th	7th
1.	Package of 10 lbs. (crock or tub)	\$12	\$10	\$ 8	\$ 6	\$ 5	\$ 4	\$ 3
2.	1-lb. prints, 5 pounds, put up in parchment paper	10	8	6	5	4	3	2

SPECIAL

3. Best package of 10 lbs. of Farm Dairy Butter exhibited in section 2. Prize \$15. Donated by The Beaver Lumber Company, G. W. Faulkner, Manager, Regina. Winning exhibit to become the property of the donor.

THE SASKATCHEWAN FARMERS' MUTUAL FIRE INSURANCE CO.

FORMERLY
The Saskatoon Mutual Fire Insurance Company
Head Office
CANADA BUILDING, SASKATOON, SASK.

Total insurance in force (at December 31, 1918)	\$23,988,962.00
Increase over 1917	5,746,932.00
Cash Securities	83,683.00
Surplus to Policyholders	275,750.00

FARMERS

Place your Insurance in a Saskatchewan Company, whose Surplus Funds are invested for your benefit.

Saskatchewan Greater Production Loan	\$55,000.00
Saskatchewan Rural Telephone Debentures	8,683.00

THE LARGEST AND STRONGEST

Farmers' Mutual Fire Insurance
Company in Saskatchewan

S. J. CAUGHT, Sec. Manager

Agent for Regina District, Anderson, Lunney & Company,
Canada Life Building, Regina, Sask.

GEO. E. GOODWIN
For Pictures and Picture Framing. 2304 11th Ave., Regina



HOME PRODUCTS

Class 703. SPECIAL RULES FOR BREAD AND BUNS

1. Each exhibit of bread must be approximately a 2-pound undivided loaf of plain bread (not fancy).
2. Bread and Buns must be baked on or before Saturday, July 26th, and must be delivered at the Exhibition grounds by noon on Monday, July 28th. Judging will take place on the afternoon of July 28th
3. Competition is not open to professionals and entry must be made in the name of the person who made the bread or buns.
4. Bread and Buns will be judged by the following scale of points:

	Possible Score
(a) General appearance	15
(b) Volume	15
(c) Texture	25
(d) Color	20
(e) Flavor	25

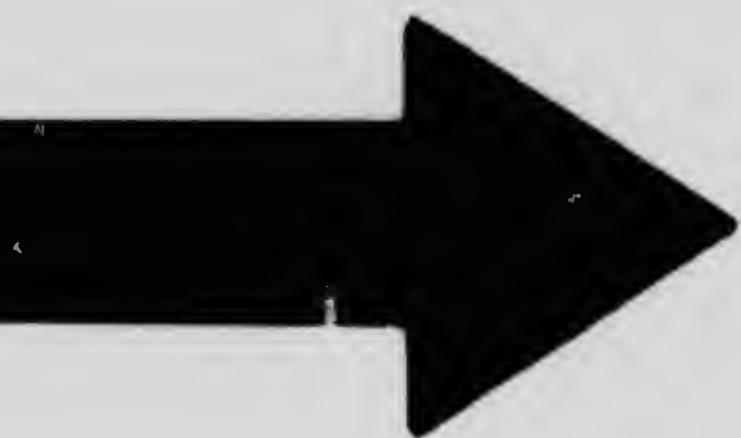
Total points 100

5. Bread or Buns not claimed by exhibitors by 10 a.m., Saturday, August 2nd, will be sent to local charities.
6. No exhibitor shall make more than one entry in each section of this class.

Section	1st	2nd	3rd	4th	5th	6th	7th	8th	9th	10th
1. Bread, home made, 2-lb. loaf, made of standard flour	\$10	\$9	\$8	\$7	\$6	\$5	\$4	\$3	\$2	\$1
2. Buns, home made, two varieties, six of each, made of standard flour	10	9	8	7	6	5	4	3	2	1
3. Muffins, home made, 6	4	3.50	3	2.50	2	1.50	1			

Home Products Entries Close July 11th





MICROCOPY RESOLUTION TEST CHART

(ANSI and ISO TEST CHART No. 2)



4.5



5.0



5.6

6.3



7.1

8.0



APPLIED IMAGE Inc

1653 East Main Street
Rochester, New York 14609 USA
(716) 482 - 0300 - Phone
(716) 288 - 5989 - Fax

The Saskatchewan



Grower's Association
Limited

Binder Twine

It is this organization that in the early days of the Trading Department saved you considerable money on Twine. It is still doing so.

Barb Wire and Woven Fencing

During this year we have offered the best available prices for Barb Wire and Woven Fencing.

Lumber and Builders Supplies

Everything required for the building of Home or Barn handled by this department.

Send for particulars and Prices of Lumber, Cement, Wall Board, Hardware, Paint etc.

Groceries and Dry Goods

We are giving excellent service in each of these lines. Send us your orders and in return you will receive the best possible goods that can be bought—at the very Lowest Price.

We are now giving real service. Let us prove it to you.

See The Stinson Tractor

Before Buying

We will Save You Money—It Will Save You Time—The Dustproof Tractor which burns Kerosene without smoking. Delivery immediately from Regina stock.

We carry a full line of Repairs here.

Farmers' Building



Regina, Sask.

GEO. E. GOODWIN

Artistic Wallpapers.

2304 11th Ave., Regina

Agricultural and Horticultural Products

SEED GRAIN

Class 708.

SPECIAL RULES

1. All general rules which are applicable will apply to this department.
2. All exhibits must be the growth of 1918 or 1919 and must have been grown by the exhibitor.
3. Each exhibit shall consist of full one bushel by measure, excepting seeds of grasses for which a half bushel by measure shall be required and Alfalfa for which one gallon is required.
4. Entries close July 12th. Exhibits sent by freight will be entitled to free return. Shipment by freight should be made before July 6th.
5. An entrance fee of 25 cents will be charged for each entry and must be paid at the time of making entry. No exhibitor shall make more than one entry in any one section.
6. Judges are instructed not to make awards to unworthy exhibits.
7. On arrival at the exhibition the exhibits will be placed in uniform numbered boxes provided by the Association in which they will remain during the exhibition.

Section	1st	2nd	3rd	4th	5th	6th
1. Spring Wheat, Marquis	\$15	\$12	\$10	\$ 8	\$ 6	\$ 4
2. Spring Wheat, any variety other than Marquis	10	8	6	4	2	
3. Oats, White, any variety	15	12	10	8	6	4
4. Barley, 6 rowed, any variety	10	8	6	4	2	
5. Barley, 2 rowed, any variety	10	8	6	4	2	
6. Flax	10	8	6	4	2	
7. Peas, field, any variety	10	8	6	4	2	
8. Rye, Spring or fall	10	8	6	4	2	
9. Brome Grass	6	4	2			
10. Western Rye Grass	6	4	2			
11. Timothy Grass	6	4	2			
12. Alfalfa Seed, 1 gallon	6	4	2			

SPECIAL FOR GRAIN GROWERS' ASSOCIATIONS

Class 709.

SPECIAL RULES

1. Competition open only to local branches of the Saskatchewan Grain Growers' Association.
2. Each exhibit shall consist of one-half bushel wheat, one-half bushel barley, and one-half bushel oats, by measure, any variety. Not more than one group can be entered or shown by any one local.
3. The grain must be provided by the members of the local making the exhibit and no member shall contribute more than one kind of grain.
4. Exhibits may be shipped by freight at any time previous to June 20th, 1919, and must be consigned to D. T. Elderkin, Manager, Provincial Exhibition, Regina, Saskatchewan. Freight charges will be paid by the Exhibition Association.

Seed Grain Entries Close July 12

"The Scott Fruit Co. Limited"

Corner Broad and 5th, Regina
PHONES: Office 3639, Warehouse 3638

FOREIGN AND DOMESTIC FRUITS

Distributing Agents, SHEA'S BEER, ALE AND PORTER

GRAIN Cash and Futures

Winnipeg, Minneapolis, Chicago, St. Louis, Kansas City

STOCKS AND BONDS

Montreal, Toronto, New York, Boston, Chicago

VICTORY BONDS Bought; Sold and Quoted
Private Wires

E. E. QUIGLEY

Phone 4714 203 Darke Blk., Regina
Correspondents: Clark & Martin, Logan & Bryan

GEO. A. ESPLEY

ELECTRICAL CONTRACTOR

We Save You Money
on

ELECTRICAL SUPPLIES
WASHING MACHINES
ELECTRIC STOVES
VACUUM CLEANERS
MAZDA AND LAGO LAMPS

ESTIMATES FURNISHED

On Wiring Towns and Villages in the West—no
matter where located.

LET US

Wire your Home, your Office, or your Ware-
house.

ELEVATOR REPAIRS A SPECIALTY

GEO. A. ESPLEY

Basement Farmers' Building, Twelfth Avenue
PHONE 3673 REGINA

GEO. E. GOODWIN

Painter and Decorator.

2304 11th A. Regina

5. Entry must be made in the name of the local by the Secretary on or before June 2nd, 1919. No entry fee will be charged.

6. At the time of making entry the Secretary must give the name of the member contributing each portion of the exhibit together with a brief statement giving the following information about the field from which each kind of grain was selected, if same can be secured:

- (a) How was land prepared previous to seeding?
- (b) Kind of soil.
- (c) Approximate date of sowing.
- (d) Quantity of seed sown per acre.
- (e) Name of variety.
- (f) Size of field.
- (g) Approximate date of cutting.
- (h) Approximate yield per acre.

7. Upon receipt of entry the Manager will forward to the Secretary identification numbers to be placed inside each sack and shipping tags to be fastened to the outside of the sacks. No other identification marks may be put with the grain nor attached to the sacks.

8. Prize money won will be paid to the Secretary to be disposed of as the local may see fit.

9. All grain exhibited shall become the property of the Exhibition Association.

Prizes

1st, \$50; 2nd, \$37.50; 3rd, \$25; 4th, 20; 5th, \$15; 6th, \$12.50; 7th, \$10; 8th, \$7.50; 9th, \$5; 10th, \$2.50.

Should there be between 100 and 200 exhibits in the competition the above prizes will be added to—the first nine prizes will be as above and the following added: 10th, \$5; 11th, \$5; 12th, \$5; 13th, \$5; 14th, \$5; 15th, \$2.50; 16th, \$2.50; 17th, \$2.50; 18th, \$2.50; 19th, \$2.50; 20th, \$2.50. In like manner there will be an increase of five prizes of \$5 each and five prizes of \$2.50 each for each hundred or fractional increase in the number of entries.

GRAND CHALLENGE SHIELD

The Saskatchewan Co-operative Elevator Company, Limited, has donated a magnificent Grand Challenge Shield to be awarded annually to the Local securing first prize in the competition. This trophy is to be won four times, not necessarily in succession, before becoming the permanent property of the winner. Won in 1916 by the Rockhaven Local, in 1917 by the Bulyea Local, in 1918 by the Greenwood local, Lloydminster.

Class 710.

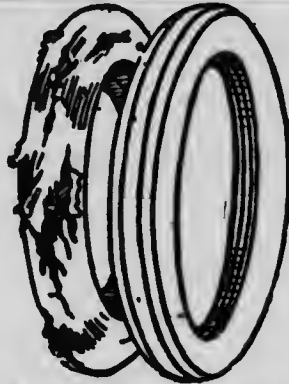
VEGETABLES

Exhibitors in this class should endeavor to have their exhibits uniform in size and appearance, as this will be taken into consideration in placing the awards. Great size will not be considered a point of merit as large vegetables are usually coarse and poor table quality. The presence of disease will be a disqualification.

All exhibits in this class must have been grown by the exhibitor in 1919, and to have been grown in the open after June 14.

Grain Growers Entries Close June 2nd

**Tires
and
Tubes**



**Tire
Repairing**

BEFORE AFTER

VISITORS TO THE EXHIBITION

Don't let that Old Tire give you any trouble Fair Week. Let us put a new one on, so you can have lots of fun and no tire worries.

"GOODYFAR" and "DOMINION" Always in Stock

Central Tire & Vulcanizing Works

1961-3 Albert St., Regina

Corner of Victoria and Albert.

PHONE 6573.



**R. U.
Interested
in a
Monument?**

If so see us. We have the largest stock of Marble, Scotch, Canadian and American Granite in the West.

We also have a good stock of Interior Marble, Tile and Terrazzo, Fire-places and Fixtures.

See our exhibit, south aisle under grand stand.

Regina Marble & Tile, Limited

Successors to F. Sack & Co., Ltd.

826 Dewdney Ave.

Phone 3347

GEO. E. GOODWIN

Sells Canada Paint, Valspar Varnish, 2304 11th Ave., Regina

VEGETABLES—(Continued)

Each exhibitor is limited to fifteen entries of vegetables and to one entry in each section.

All exhibits for this department must be in place by 11 a.m., on July 28th.

Section		1st	2nd	3rd
1.	Asparagus, 1 bunch	\$ 2	\$ 1	.50
2.	Beans, wax, 1 dozen pods	2	1	.50
3.	Beans, kidney, 1 dozen pods	2	1	.50
4.	Beans, broad or windsor, 1 dozen pods	2	1	.50
5.	Beets, round, any variety, 6 roots	2	1	.50
6.	Beets, intermediate, any variety, 6 roots	2	1	.50
7.	Beets, long, any variety, 6 roots	2	1	.50
8.	Cabbage, conical, any variety, 2 heads	2	1	.50
9.	Cabbage, drum head, any variety, 2 heads	2	1	.50
10.	Cabbage, red, any variety, 2 heads	2	1	.50
11.	Cabbage, Savoy, 2 heads	2	1	.50
12.	Cauliflower, any variety, 2 heads	2	1	.50
13.	Carrots, short, any variety, 6 roots	2	1	.50
14.	Carrots, intermediate, any variety, 6 roots	2	1	.50
15.	Carrots, long, any variety, 6 roots	2	1	.50
16.	Celery, any variety, 4 heads	2	1	.50
17.	Citron, any variety, 2 fruits	2	1	.50
18.	Cucumbers, frame or hot bed, any variety, 2....	2	1	.50
19.	Cucumbers, outdoor grown, any variety, 2	2	1	.50
20.	Corn, any variety, 6 cobs	2	1	.50
21.	Kohi-Rabi, any variety, 3 heads	2	1	.50
22.	Leek, any variety, 4 heads	2	1	.50
23.	Lettuce, cos., any variety, 2 heads	2	1	.50
24.	Lettuce, cabbage, any variety, 2 heads	2	1	.50
25.	Marrow, any variety, 2 fruits	2	1	.50
26.	Onions, white or yellow, 3	2	1	.50
27.	Onions, red, 6	2	1	.50
28.	Onions, pickling, 1 pint	2	1	.50
29.	Onions, multipliers, 1 pint	2	1	.50
30.	Parsley, in four-inch pot	2	1	.50
31.	Parsnips, 6 roots	2	1	.50
32.	Peas, any variety, 20 pods	\$2 1.50	1.00	.75 .50
33.	Potatoes, pink or red, any named variety, 6 tubers	2	1	.50
34.	Potatoes, white, yellow or cream, any named variety, 6 tubers	2	1	.50
35.	Radishes, round, any variety, 6 roots	2	1	.50
36.	Radishes, intermediate, any variety, 6 roots	2	1	.50
37.	Radishes, long, any variety, 6 roots	2	1	.50
38.	Radishes, winter, any variety, 6 roots	2	1	.50
39.	Rhubarb, 6 stalks	2	1	.50
40.	Spinach, 12 plants without roots	2	1	.50
41.	Swiss Chard	2	1	.50
42.	Tomatoes, ripe, any variety, 6	2	1	.50
43.	Tomato Plant, quantity and quality of tomatoes on plant to determine the award	2	1	.50
44.	Turnip, any garden variety, 3 roots	2	1	.50
45.	Turnip, any Swede variety, 3 roots	2	1	.50

Vegetable Entries Close July 23rd

The Waterbury Seamless, Pipeless Furnace

For HOMES, SCHOOLS and CHURCHES



EVERY FURNACE GUARANTEED

Can be installed in any basement or cellar without remodelling the house in any way. The only system to be considered where a maximum amount of heat is required from a minimum amount of fuel.

Write for Catalogue and Prices

The Waterman-Waterbury Mfg. Co. Ltd.

REGINA, SASK.

GEO. E. GOODWIN

For Pictures and Picture Framing. 2304 11th Ave., Regina

VEGETABLES—(Continued)

Section	1st	2nd	3rd	4th	5th	6th	7th
46. Collection of vegetables not less than 10 kinds, to be judged for proper setting as well as for variety and quality. Only foliage of Vegetables shown to be used for decorative purposes, to be displayed in space of 3 feet square on trays supplied by the Association. Exhibits shown in this cannot be shown in other sections	\$20	\$15	\$12	\$10	\$8	\$6	\$4

Section	1st	2nd	3rd
47. Mushrooms, plate of six	\$2	\$1	.50

Class 711. FRESH FRUITS

All exhibits in this class must have been grown by the Exhibitor in Saskatchewan.

Section	1st	2nd	3rd	4th
1. Currants, black, on fruit stalk, one pint ...	\$3	\$2	\$1	
2. Currants, white, on fruit stalk, one pint ...	3	2	1	
3. Currants, red, on fruit stalk, one pint	3	2	1	
4. Gooseberries, one pint	3	2	1	
5. Loganberries, one pint	3	2	1	
6. Raspberries, red, one pint	3	2	1	
7. Raspberries, white, one pint	3	2	1	
8. Strawberries, one pint	3	2	1	
9. Best collection of fruits, not less than five varieties, one pint of each	8	6	4	\$2

Class 712. HOUSE PLANTS

Section	1st	2nd	3rd
1. Begonia, tuberous (double), 1 p	\$2	\$1	.50
2. Begonia, tuberous (single), 1 plant	2	1	.50
3. Begonia, other than tuberous, 1 plant	2	1	.50
4. Asparagus plumosus, 1 plant	2	1	.50
5. Asparagus Sprengerii, 1 plant	2	1	.50
6. Cactus	2	1	.50
7. Calceolaria	2	1	.50
8. Coleus	2	1	.50
9. Fern, Boston	2	1	.50
10. Fern, any other variety	2	1	.50
11. Fuchsia	2	1	.50
12. Geranium, single	2	1	.50
13. Geranium, double	2	1	.50
14. Geranium, ivy leafed	2	1	.50
15. Geranium, variegated	2	1	.50
16. Hydrangea in bloom	2	1	.50
17. Pelargonium in bloom	2	1	.50

IF YOU WANT a newspaper that is live, and independent, and readable; that contains the best features available on the continent--Thornton W. Burgess's Bed-Time Stories, Addington Bruce's articles on Psychology, Dr. Frank Crane's Editorials, Brigg's Cartoons, Webster's Cartoons, "Bringing Up Father", and many others; that editorially speaks always the Saskatchewan viewpoint; that has no corporation or political ties; that covers the news of the world, the province and the city completely and brightly--drop into the office of The Regina Daily Post, Westman Chambers, and leave Five Dollars for a mail subscription. Don't neglect it!

HOUSE PLANTS—(Continued)

Section	1st	2nd	3rd
18. Phlox, perennial, 1 flowering stem	2	1	.50
19. Phlox, annual, 6 flowering stems	2	1	.50
20. Primula, any other variety	2	1	.50
21. Mimulus (musk plant)	2	1	.50
22. Palm	2	1	.50
23. Rose Plant in bloom	2	1	.50
24. Rubber Plant	2	1	.50
25. Specimen Foliage Plant, any variety	2	1	.50
26. Specimen Flowering Plant, any variety	2	1	.50
27. Hanging Basket	2	1	.50

Section	1st	2nd	3rd	4th	5th	6th	7th
28. Window Display of House Plants to be shown on wire stand by amateur Exhibitors. Stands will be provided by the Association. Exhibits shown in this section cannot be shown in other sections	\$15	\$12	\$10	\$8	\$5	\$3	\$2

Competition in Sec. 28 will be limited to the first 12 entries received.

Class 713.

CUT FLOWERS

In judging this class the manner in which the exhibits are displayed will be taken into consideration when making awards.

Each exhibit must contain the exact number indicated in each section and more or less will be a disqualification.

No foliage must be included with an exhibit other than that belonging to plants from which the flowers came.

The term "spike" is defined to mean a single unbranched stem.

In all sections for collections each variety to be shown in a separate vase and not be shown in other sections.

Section	1st	2nd	3rd
1. Antirrhinums, 6 spikes	\$ 2	\$ 1	.50
2. Aster, plume, 6 blooms	2	1	.50
3. Aster, ray, 6 blooms	2	1	.50
4. Aster, other than plume or ray, 6 blooms	2	1	.50
5. Canterbury Bells, 6 spikes	2	1	.50
6. Carnation, 6 blooms	2	1	.50
7. Dahlia, 3 blooms	2	1	.50
8. Dianthus, or Pinks, 6 blooms	2	1	.50
9. Gladiolus, 6 spikes	2	1	.50
10. Hollyhock, 1 spike	2	1	.50
11. Marigold, French, 6 blooms	2	1	.50
12. Marigold, African, 6 blooms	2	1	.50
13. Nasturtium, 12 blooms	2	1	.50
14. Pansy, 30 blooms	2	1	.50
15. Peony, 3 blooms	2	1	.50
16. Petunia, double, 6 blooms	2	1	.50

Flower Entries Close July 23rd

School Trustees!

We Build and Equip Schools



THESE BOOKS ARE FREE

Mark X opposite the subject you desire information about and mail
back to us today

-Free Plans For School Buildings.
-Basement Furnaces for Schools.
-General School Equipment.
-School Room Heaters.
-Adjustable School Desks.
-Sanitary Drinking Fountains.
-Chemical Closets.
-Trustees Plan Book.

The Waterman-Waterbury Mfg. Co. Limited

Donahue Bldg., Regina, Sask.

PRIZE LIST

83

CUT FLOWERS—(Continued)

Section	1st	2nd	3rd
17. Petunia, single, 6 blooms	2	1	.50
18. Phlox, perennial, 1 flowering stem	2	1	.50
19. Phlox, annual, 6 flowering stems	2	1	.50
20. Rose, outdoor grown from plants which have passed at least one winter in the open	2	1	.50
21. Stocks, 6 spikes	2	1	.50
22. Sweet Peas, Spencer, collection of six named varieties, 6 flowering stems of each variety....	4	3	2.00
23. Sweet Peas, other than Spencer, collection of six named varieties, 6 flowering stems of each variety	4	3	2.00
24. Sweet Peas, best vase of any one color, 25 flowering stems	2	1	.50
25. Sweet Peas, best collection, 6 flowering stems of each variety	5	4	3.00
26. Sweet William, 3 heads	2	1	.50
27. Verbena, 3 flowering stems	2	1	.50
28. Zinnia, 6 blooms	2	1	.50
29. Bouquet of garden flowers, stems tied together ..	3	2	1.00
30. Bouquet of wild flowers, stems tied together ...	3	2	1.00
31. Collection of annuals	4	3	2.00
32. Collection of perennials	4	3	2.00
33. Collection arranged for decorative effect, either annuals, perennials, or both, any number of vases may be used	10	8	5.00

JUMBO



BRAND

Sheet Metal Products for the Farm

**Galvanized Iron Tanks
For Water, Oil and Gasoline**

**Corrugated Iron
For Roofing and Siding
Barns, Shed and Garages**

Well Curbing and Culverts

Eaves-troughs and Pipe

Brick and Stone Siding

Portable Metal Garages

Granaries (Round and Square)

Gasoline Wagon Tanks

And Anything in Sheet Metal.

**Best
Material
and Work-
manship enter
into our goods.**

**When in Regina
please call
at our
factory.**

Crossen Metal Works, Ltd.

REGINA FACTORY, COR. 6TH AND SMITH ST.

Main Factory and Office, Winnipeg

ARTS DEPARTMENT

Class 714.

HANDICRAFTS

Section	1st	2nd	3rd
1. Wood-carving, relief	\$ 5	\$ 3	\$ 2
2. Wood-carving, chip	3	2	1
3. Collection of wood-carving	6	4	2
4. Collection of Marquetry work	3	2	1
5. Specimen of modelling in clay or other material, (in the round)	3	2	1
6. Specimen of Plasticine or clay modelling (in relief) open to children under 16 years of age	3	2	1
7. Specimen of clay modelling (in relief)	3	2	1

Class 715.

SCHOOL SECTION

NOTE—Exhibits must be accompanied by a teachers' certificate to the effect that the work shown is that of the pupils; and that no alterations or additions have been made by the teacher and no suggestions made apart from the regular teaching. When exhibit is the work of an individual pupil the entry must be made by the pupil.

Unless specially stated exhibits are open to both graded and ungraded schools.

Section	1st	2nd	3rd	4th
1. Map of Canada (modelled in relief) work of pupils up to grade six inclusive	\$2	\$1.50	\$1	.50
2. Map of Canada (in pen and ink or colors) work of pupils in grade seven and up	2	1.50	1	.50
3. A Map of Saskatchewan showing: (1) Relief and Drainage; (2) Natural Products; (3) Centres of Population; (4) Railways ..	2	1.50	1	.50
4. Specimen of Penmanship, 75 words (exhibitor under 12 years of age)	2	1.50	1	.50
5. Collection of Kindergarten Exhibits, made by a rural or village school, and cover full range of kindergarten work	3	2	1	.50
6. Collection of Kindergarten Exhibits, made by a town or city school, and cover full range of kindergarten work	3	2	1	.50
7. Individual sample of Kindergarten Work, open to pupils under seven years of age, attending a rural or village school	1.50	1	.75	.50
8. Individual sample of Kindergarten Work, open to pupils under seven years of age attending a town or city school	1.50	1	.75	.50
9. Collection of Plants, named, pressed and mounted, made by individual pupils of rural or village school	3	2	1.50	\$1
10. Collection of Plants, named, pressed, and mounted, made by individual pupils of town or city school	3	2	1.50	1

School Entries Close July 11th

R. H. WILLIAMS & SONS, Limited
REGINA, SASK.

Saskatchewan's Foremost Store



Visit Saskatchewan's Greatest Jewelry Store

FOR

**WATCHES
DIAMONDS
JEWELRY**

**SILVERWARE
CUT GLASS
PRIZE CUPS**

Have your Eyes attended to by our expert Optometrist.
Make our store your headquarters.

WHEATLEY BROS.

JEWELERS AND OPTICIANS

1735-1737 Scarth St.

Our reputation for highest quality at fair prices is established.

SCHOOL SECTION—(Continued)

11.	Collection of Noxious Weeds, named, pressed and mounted, made by individual pupils of rural or village school	3	2	1.50	1
12.	Collection of Noxious Weeds, named, pressed and mounted, made by individual pupils of town or city school	3	2	1.50	1
13.	Original Drawing in Black and White; size 9 in. by 12 in.; subject "Sunshine and Shadow—a Prairie Scene"	5	3	2	1
14.	Original Drawing in colors, crayon, water or oils, size 9 inches by 12 inches; subject "Sunshine and Shadow—a Prairie Scene" ..	5	3	2	1

PRIMARY EXHIBIT
Grades I. and II.

Section		1st	2nd	3rd
15.	Raphia, Handbag, knotted75	.50	.25
16.	Raphia, Purse, weaving75	.50	.25
17.	Raphia Box, winding75	.50	.25
18.	Raphia Box, blanket stitch75	.50	.25
19.	Raphia Box, Braiding75	.50	.25
20.	Raphia Picture Frame, winding75	.50	.25
21.	Raphia Picture Frame, blanket stitch75	.50	.25
22.	Raphia Picture Frame, coiled stitch75	.50	.25
23.	Raphia Picture Frame, braiding75	.50	.25
24.	Raphia Mat, round, weaving75	.50	.25
25.	Raphia Mat, round, coiled stitch75	.50	.25
26.	Raphia Mat, round, braiding75	.50	.25
27.	Raphia Mat, square, weaving75	.50	.25
28.	Raphia Mat, oblong, weaving75	.50	.25
29.	Raphia Serviette Ring, winding75	.50	.25
30.	Raphia Serviette Ring, blanket stitch75	.50	.25
31.	Raphia Serviette Ring, covered ring75	.50	.25
32.	Raphia Basket, braiding75	.50	.25
33.	Raphia Hat, braiding75	.50	.25
34.	Knitting with cotton or wool75	.50	.25
35.	Spool Knitting75	.50	.25
36.	Hammock, cord75	.50	.25
37.	Mat, rag, woven or looms75	.50	.25

SEWING

Section		1st	2nd	3rd
38.	Sampler, showing stitches taught in grades 1 and 2, canvas75	.50	.25
39.	Hair Receiver, canvas75	.50	.25
40.	Handkerchief case75	.50	.25
41.	Serviette Ring, canvas75	.50	.25
42.	Needle Case, canvas75	.50	.25
43.	Mat, canvas75	.50	.25
44.	Jewell case, canvas75	.50	.25
45.	Bag, canvas75	.50	.25
46.	Freehand Cutting or Tearing:			
	(a) Illustration of game or story	1.00	.75	.50
	(b) Flowers	1.00	.75	.50

FARMERS!

Are you getting the most out of your Farm Products?

Are you shipping your products to your own company?

The Saskatchewan Co-operative Creameries, Ltd.

We are organized to market your Cream, Eggs and Poultry on the
CO-OPERATIVE PLAN

We paid \$34,000.00 in bonuses to our patrons on last year's business.
Ship your cream to the nearest creamery at the following points:

MELFORT	MELVILLE	MOOSOMIN
LANIGAN	LANGENBURG	LLOYDMINISTER
CANORA	OXBOW	CUDWORTH
WADENA	TANTALLON	WAWOTA
UNITY	SHELLBROOK	BIRCH HILL
N. BATTLEFORD	KERROBERT	FISKE
REGINA AND HENRIBURG		

Ship your Eggs and Poultry to our Cold Storage Plants at
REGINA, SASKATOON AND NORTH BATTLEFORD
Cash Returns Daily

When at our Fair
EAT

Dominion Ice Cream

The Saskatchewan Co-operative Creameries, Ltd.

Regina

Head Office

Sask.

PRIZE LIST

99

SCHOOL SECTION—(Continued)

MANUAL TRAINING

Grade III.

47. Piece of Wood Work 1.50 1.00 .50

Grade IV

48. Piece of Wood Work 1.50 1.00 .50

Grade V.

49. Piece of Wood Work 1.50 1.00 .50

50. Working Drawing 1.50 1.00 .50

51. Piece of Chip Carving 1.50 1.00 .50

Grade VI.

52. Piece of Wood Work 1.50 1.00 .50

53. Piece of Hammered Copper or Brass 1.50 1.00 .50

54. Piece of Wood Turning 1.50 1.00 .50

55. Working Drawing 1.50 1.00 .50

Grade VII.

56. Piece of Wood Work 1.50 1.00 .50

57. Piece of Hammered Copper or Brass 1.50 1.00 .50

58. Piece of Joined Copper or Brass 1.50 1.00 .50

59. Piece of Wood Turning 1.50 1.00 .50

60. Working Drawing 1.50 1.00 .50

Grade VIII.

61. Piece of Wood Work 1.50 1.00 .50

62. Piece of Wood Work, upholstered 1.50 1.00 .50

63. Piece of Wood Work, caned 1.50 1.00 .50

64. Piece of Hammered Copper or Brass 1.50 1.00 .50

65. Piece of Joined Copper or Brass 1.50 1.00 .50

66. Piece of Wood Turning 1.50 1.00 .50

67. Working Drawing 1.50 1.00 .50

Any Grade

68. Piece of Carving in Relief 1.50 1.00 .50

69. Mechanical Model 1.50 1.00 .50

HOUSEHOLD SCIENCE EXHIBIT

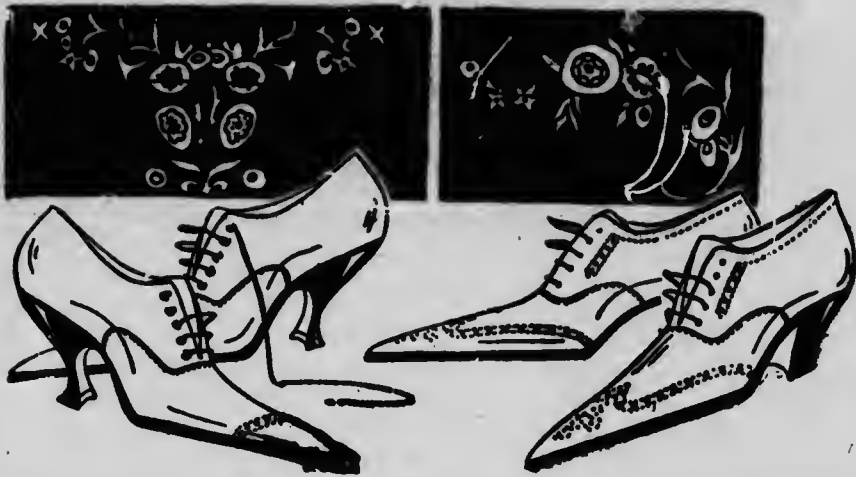
Grade III.

Section		1st	2nd	3rd
70. Doll's Blanket		1.00	.75	.50
71. Needle Book (button-holed)		1.00	.75	.50
72. Pin Wheel		1.00	.75	.50
73. Ribbon Needle Book		1.00	.75	.50

Grade IV.

74. Laundry Bag		1.00	.75	.50
75. Work Bag		1.00	.75	.50
76. Bag with Embroidery		1.00	.75	.50
77. Sample of hemming shown on doll's apron		1.00	.75	.50
78. Doll's Outfit (underwear and dress)		1.00	.75	.50
79. Doll's pillow and hemmed pillow case		1.00	.75	.50

School Entries Close July 15th



GREETINGS AND A WELCOME

Imperial Footery enjoys the favor of all who appreciate character and individuality in dress. We have more to offer at "Exhibition Time" this year than ever before. With values for "The Whole Family."

The Imperial Shoe Store

1780 Hamilton St.

Regina, Sask.

JUST EYE-GLASSES WILL NOT DO

Eye-Glasses to give full and proper relief must be correctly ground. The slightest defect may have a harmful effect on the eyes, and aggravate rather than relieve the strained condition.

**YOU HAVE THE GUARANTEE OF OVER
20 YEARS' EXPERIENCE**

For over 20 years I have practiced Optometry and have carefully studied all conditions causing eye-strain, as well as the proper fitting of eye-glasses. Call on me when in Regina and I will tell you frankly if you need glasses.

Satisfaction Guaranteed

A. G. ORCHARD

Optician

Hamilton St., Opp. City Hall

Regina

SCHOOL SECTION—(Continued)

Grade V.

80.	Hemstitched Towel	1.50	1.00	.75
81.	Hemstitched Dresser Cover	1.50	1.00	.75
82.	Hemstitched Fray Cloth, or square centrepiece	1.50	1.00	.75
83.	Hemstitched Handkerchief	1.50	1.00	.75

Grade VI.

84.	Cooking Outfit, consisting of Apron, towel, and holder	2.00	1.50	1.00
-----	--	------	------	------

Grade VII.

85.	Hand made Nightdress	2.00	1.50	1.00
86.	Hand made Corset Cover or Envelope combination	2.00	1.50	1.00

Grade VIII.

87.	Middy Blouse, Dress or Kimona (machine made)	2.00	2.50	1.50
-----	--	------	------	------

ART EXHIBIT

Grade I.

88.	Illustration of story, game or song in paper cutting	1.00	.75	.50
89.	Illustration in pencil or crayons	1.00	.75	.50
90.	Drawing of plant form	1.00	.75	.50
91.	Color reproduction in any suitable form	1.00	.75	.50

Grade II.

92.	Illustration in paper cutting	1.00	.75	.50
93.	Illustration in pencil or crayon	1.00	.75	.50
94.	Drawing of plant form	1.00	.75	.50
95.	Color reproduction in any suitable form	1.00	.75	.50

Grade III.

100.	Story illustration in pencil or crayon	1.00	.75	.50
101.	Drawing of plant form	1.00	.75	.50
102.	Color reproduction	1.00	.75	.50
103.	Group of objects in silhouette or outline, showing general shape and proportion	1.00	.75	.50
104.	Lettering adapted—paper cutting	1.00	.75	.50

Grade IV.

105.	Pencil illustration involving study of figure, or animal drawing	1.00	.75	.50
106.	Decorative design in black and white or color ..	1.00	.75	.50
107.	Group of objects in outline, or flat values showing general shape and proportion	1.00	.75	.50
108.	Original landscape in one or more colors	1.00	.75	.50
109.	Drawing of plant forms, silhouette or in color ..	1.00	.75	.50

Western Canada Fairs Association

Over \$350,000 Offered in Prizes and Purses on
"A" and "B" Circuits

CLASS A DATES

	Manager
Calgary, Alta., June 28-July 5	E. L. Richardson
Edmonton, Alta., July 7-12	W. J. Stark
Saskatoon, Sask., July 14-19	C. D. Fisher
Brandon, Man., July 21-26	W. I. Smale
Regina, Sask., July 28-Aug. 2	D. T. Elderkin

CLASS B DATES

	Manager
Red Deer, Alta., July 12-16	J. E. Welton
Camrose, Alta., July 17-19	J. D. Saunders
Lloydminster, Alta., July 21-23	H. Huxley
North Battleford, Sask., July 24-26	F. Wright
Prince Albert, Sask., July 29-Aug. 1	W. O. McDougall
Yorkton, Sask., Aug. 5-8	J. A. Duncan
Swift Current, Aug. 5-7	J. E. Hemenway
Weyburn, Sask., Aug. 5-7	Frank Heard

ASSOCIATE MEMBERS

New Westminster, B.C., Sept. 29-30-Oct. 1-2-3-4	D. E. MacKenzie
Vancouver, B.C., Sept. 8-13	H. S. Rolston

Write the Individual Managers For Prize Lists.

Western Canada Fairs Association

E. L. Richardson, Calgary, Alberta, President.	R. M. Matheson, Brandon, Man., 1st Vice-President.	J. F. Day, Red Deer, Alta., 2nd Vice-President
W. J. Stark, Edmonton, Alta., Secretary		

PRIZE LIST

100

Grade V.

110.	Pencil illustration involving figure or animal study	1.00	.75	.50
111.	Decorative design in black and white	1.00	.75	.50
112.	Decorative Design in color	1.00	.75	.50
113.	Original Landscape in one or more colors	1.00	.75	.50
114.	Proportion of plant form in silhouette or in color	1.00	.75	.50

Grade VI.

115.	Decorative design in black and white	1.00	.75	.50
116.	Decorative design in color	1.00	.75	.50
117.	Drawing of group of objects, in black and white or color	1.00	.75	.50
118.	Original scene in color, crayon or water color ..	1.00	.75	.50
119.	Pencil illustration, involving a study of figures, animals or landscape	1.00	.75	.50

Grade VII.

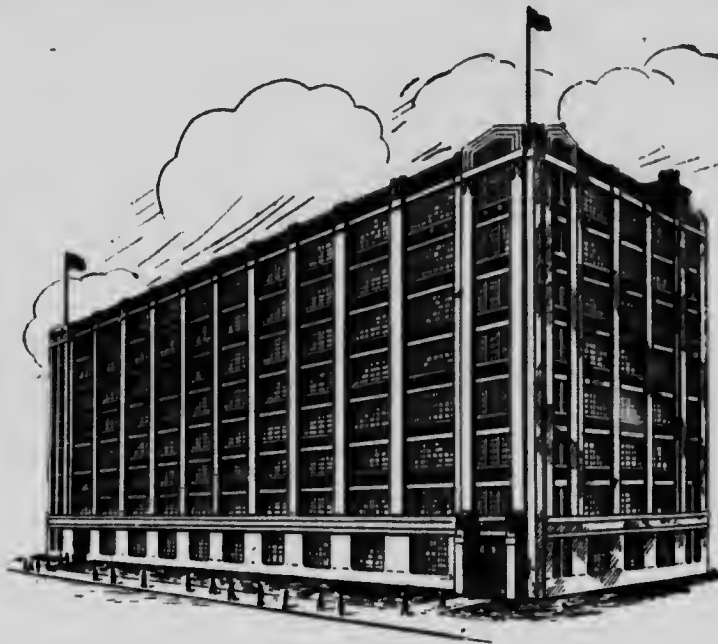
120.	Decorative design in black and white	1.00	.75	.50
121.	Decorative design, in color	1.00	.75	.50
122.	Reproduction of groups of objects, in black and white or color, showing light and shade	1.00	.75	.50
123.	Original Landscape in one or more colors	1.00	.75	.50
124.	Pencil illustration involving study of figures, animals or landscape	1.00	.75	.50

Grade VIII.

125.	Decorative Design in black and white	1.00	.75	.50
126.	Decorative design in colors	1.00	.75	.50
127.	Group of still life, fruit or vegetables, in black and white, or colors	1.00	.75	.50
128.	Original scene in color, water color or crayon .	1.00	.75	.50
129.	Pencil illustration, involving a study of figures, animals or landscape	1.00	.75	.50

HEAR SOUSA AND HIS BAND

School Entries Close July 11th



EXHIBITION! Visitors are invited to visit our home on Broad St. North. A trip through this fine modern building is very interesting. It is equipped to give Mail Order Service second to none in the Dominion.

“White Line” cars stop at the door.

We Pay Delivery Charges
We Ship Within One Day
We Guarantee Satisfaction

Ask for our Catalogue—It's Free

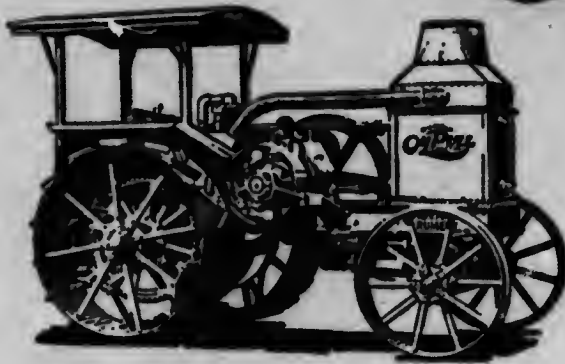
**THE
ROBERT**

SIMPSON

**WESTERN
LIMITED**

REGINA

RUMELY OIL PULL TRACTORS



A SIZE TO FIT EVERY FARM

And Backed by a Written Guarantee With No Strings To It. These Tractors were designed and built to burn Kerosene—the most economical fuel—and they burn it successfully and economically, under all conditions and at all loads up to their full rated power.

4 SIZES:

	12-20
	16-30
All Grades of	20-40
Kerosene Look	30-60
Alike to Them.	

**EFFICIENT
POWERFUL
AND
BUILT
TO LAST**

Thousands of these Tractors now in operation all over the country are day in and day out doing their work to the entire satisfaction of their owners.

Write for Illustrated Booklet, and see our Demonstration on the Fair Grounds.

Advance-Rumely Thresher Co.

INCORPORATED



**A CORDIAL INVITATION
TO THE EATON WAREHOUSE
Is Extended to Provincial Exhibition
Visitors**

The T. Eaton Co. extends a most cordial invitation to all those attending the Provincial Exhibition to visit their warehouse in Regina.

The merchandise on display is of varied lines and the inspection of same will be of great interest to all visitors.

THE LINES SHOWN INCLUDE:

Horse Collars
Democrats
Roofing Paper
Stoves
Furnaces
Cream Separators
Blacksmithing Supplies
Wind Mills
Saddles
Furniture
Carpets
Building Paper
Oil Stoves

Farm Machinery
Imperial Wagons
Fencing
Harness
Buggies
Sewing Machines
Washing Machines
Churns
Groceries
Gasoline Engines
Manure Spreaders
Pumps

THE T. EATON CO. LIMITED
REGINA CANADA

