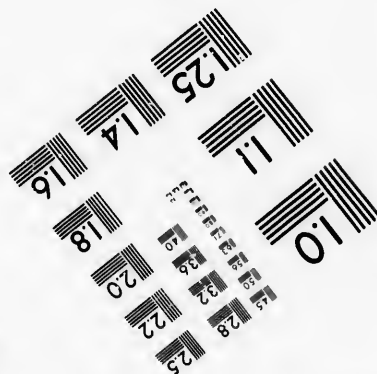
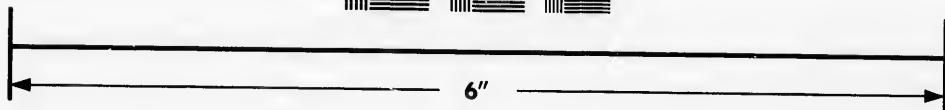
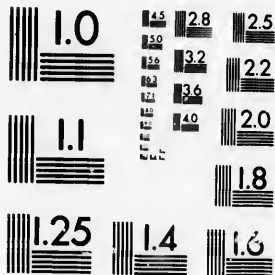


**IMAGE EVALUATION
TEST TARGET (MT-3)**



**Photographic
Sciences
Corporation**

23 WEST MAIN STREET
WEBSTER, N.Y. 14580
(716) 872-4503



**CIHM/ICMH
Microfiche
Series.**

**CIHM/ICMH
Collection de
microfiches.**



Canadian Institute for Historical Microreproductions / Institut canadien de microreproductions historiques



© 1986

Technical and Bibliographic Notes/Notes techniques et bibliographiques

The Institute has attempted to obtain the best original copy available for filming. Features of this copy which may be bibliographically unique, which may alter any of the images in the reproduction, or which may significantly change the usual method of filming, are checked below.

L'Institut a microfilmé le meilleur exemplaire qu'il lui a été possible de se procurer. Les détails de cet exemplaire qui sont peut-être uniques du point de vue bibliographique, qui peuvent modifier une image reproduite, ou qui peuvent exiger une modification dans la méthode normale de filmage sont indiqués ci-dessous.

- | | |
|--|--|
| <input type="checkbox"/> Coloured covers/
Couverture de couleur | <input type="checkbox"/> Coloured pages/
Pages de couleur |
| <input type="checkbox"/> Covers damaged/
Couverture endommagée | <input checked="" type="checkbox"/> Pages damaged/
Pages endommagées |
| <input type="checkbox"/> Covers restored and/or laminated/
Couverture restaurée et/ou pelliculée | <input type="checkbox"/> Pages restored and/or laminated/
Pages restaurées et/ou pelliculées |
| <input type="checkbox"/> Cover title missing/
Le titre de couverture manque | <input checked="" type="checkbox"/> Pages discoloured, stained or foxed/
Pages décolorées, tachetées ou piquées |
| <input type="checkbox"/> Coloured maps/
Cartes géographiques en couleur | <input type="checkbox"/> Pages detached/
Pages détachées |
| <input type="checkbox"/> Coloured ink (i.e. other than blue or black)/
Encre de couleur (i.e. autre que bleue ou noire) | <input checked="" type="checkbox"/> Showthrough/
Transparence |
| <input type="checkbox"/> Coloured plates and/or illustrations/
Planches et/ou illustrations en couleur | <input type="checkbox"/> Quality of print varies/
Qualité inégale de l'impression |
| <input type="checkbox"/> Bound with other material/
Relié avec d'autres documents | <input type="checkbox"/> Includes supplementary material/
Comprend du matériel supplémentaire |
| <input type="checkbox"/> Tight binding may cause shadows or distortion
along interior margin/
La reliure serrée peut causer de l'ombre ou de la
distorsion le long de la marge intérieure | <input type="checkbox"/> Only edition available/
Seule édition disponible |
| <input type="checkbox"/> Blank leaves added during restoration may
appear within the text. Whenever possible, these
have been omitted from filming/
Il se peut que certaines pages blanches ajoutées
lors d'une restauration apparaissent dans le texte,
mais, lorsque cela était possible, ces pages n'ont
pas été filmées. | <input type="checkbox"/> Pages wholly or partially obscured by errata
slips, tissues, etc., have been refilmed to
ensure the best possible image/
Les pages totalement ou partiellement
obscurcies par un feuillet d'errata, une pelure,
etc., ont été filmées à nouveau de façon à
obtenir la meilleure image possible. |
- Additional comments: / [Printed ephemera] 1 sheet (verso blank)
Commentaires supplémentaires:

This item is filmed at the reduction ratio checked below/
Ce document est filmé au taux de réduction indiqué ci-dessous.

10X	12X	14X	16X	18X	20X	22X	24X	26X	28X	30X	32X
								✓			

The copy filmed here has been reproduced thanks to the generosity of:

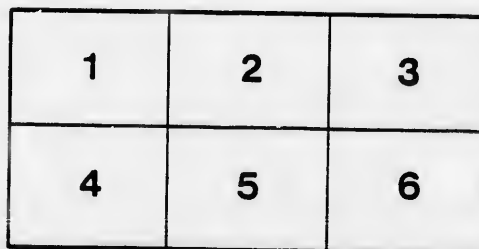
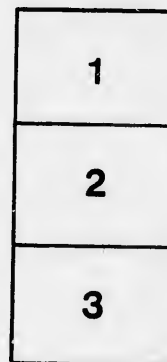
D. B. Weldon Library
University of Western Ontario
(Regional History Room)

The images appearing here are the best quality possible considering the condition and legibility of the original copy and in keeping with the filming contract specifications.

Original copies in printed paper covers are filmed beginning with the front cover and ending on the last page with a printed or illustrated impression, or the back cover when appropriate. All other original copies are filmed beginning on the first page with a printed or illustrated impression, and ending on the last page with a printed or illustrated impression.

The last recorded frame on each microfiche shall contain the symbol \rightarrow (meaning "CONTINUED"), or the symbol ∇ (meaning "END"), whichever applies.

Maps, plates, charts, etc., may be filmed at different reduction ratios. Those too large to be entirely included in one exposure are filmed beginning in the upper left hand corner, left to right and top to bottom, as many frames as required. The following diagrams illustrate the method:



L'exemplaire filmé fut reproduit grâce à la générosité de:

D. B. Weldon Library
University of Western Ontario
(Regional History Room)

Les images suivantes ont été reproduites avec le plus grand soin, compte tenu de la condition et de la netteté de l'exemplaire filmé, et en conformité avec les conditions du contrat de filmage.

Les exemplaires originaux dont la couverture en papier est imprimée sont filmés en commençant par le premier plat et en terminant soit par la dernière page qui comporte une empreinte d'impression ou d'illustration, soit par le second plat, selon le cas. Tous les autres exemplaires originaux sont filmés en commençant par la première page qui comporte une empreinte d'impression ou d'illustration et en terminant par la dernière page qui comporte une telle empreinte.

Un des symboles suivants apparaîtra sur la dernière image de chaque microfiche, selon le cas: le symbole \rightarrow signifie "A SUIVRE", le symbole ∇ signifie "FIN".

Les cartes, planches, tableaux, etc., peuvent être filmés à des taux de réduction différents. Lorsque le document est trop grand pour être reproduit en un seul cliché, il est filmé à partir de l'angle supérieur gauche, de gauche à droite, et de haut en bas, en prenant le nombre d'images nécessaire. Les diagrammes suivants illustrent la méthode.

ire
détails
es du
modifier
er une
filmage

es

errata
to

pelure,
n à

32X

IN CHANCERY

BETWEEN

RUTH HYSLOP, by Charles H. Hyslop,
and John Hyslop, husband of the said

SINGLETON GIBB, Alexander
and Joseph Roberts, her husband, Mary
Quennell, her husband, Elizabeth Farnham,
her husband, John N. Gibb and George
Gibb, infant children of James Gibb,
Susannah Banning, widow of the said James Gibb,
husband of the said Susannah Banning, (by an

TO BE SOLD BY PUBLIC AUCTION

In pursuance of a decree for partition, made by the Court of Chancery of Ontario, in this cause, bearing date 15th day of

CHANCERY!

TWEEN

Charles H. Wood, her next friend
of the said Ruth Hyslop, Plaintiffs; and

Alexander Gibb, Jane Roberts,
husband, Mary Ann Quennell and Edward
Elizabeth Farewell and Thomas Farewell,
and George Elgin Gibb and Sarah Jane
James Gibb, deceased, and Susannah Ban-
James Gibb, deceased, and Alfred Banning,
Banning, (by amended bill,) Defendants.

PUBLIC AUCTION!

made by the Court of Chancery, of the Province
5th day of April last past, and the report of James

TO BE SOLD AT
In pursuance of a decree for partition, made by the Court of Ontario, in this cause, bearing date 15th day of August, 1867, by A. S. Shanly, Esquire, the Master of the said Court at London, on the 15th day of September, one thousand eight hundred and sixty-seven,
Master, on

SATURDAY, SEPTEMBER 15th

AT TWELVE OF THE CLOCK

AT THE RANK

in the Town of CHATHAM, County of Kent, by Richard Atkinson, Esquire, of certain freehold premises, being the west half of the First Concession of Aldborough, County of Elgin, containing about 100 acres, more or less, in one lot.

The purchaser shall, at the time of sale, pay down a deposit in the proper proportion to the purchase money, and shall pay the remainder of his purchase money at the time of sale.

The said land will be sold subject to the life estate of John Gibb, of the County of Kent, now of the age of seventy years and upwards.

In other respects, and except as above mentioned, the conditions of sale are the same as in the usual conditions of sale in the Court of Chancery.

The conditions of sale and further particulars may be obtained at the Chamber of Richard Atkinson, Esquire, Barrister, at Chatham, and at the office of Messrs. Scatchell & Co., Solicitors, at London.

Dated at London, this Fifth day of August, A. D. one thousand eight hundred and sixty-seven.

CHAS. R. ATKINSON.

Solicitor for Plaintiffs.

ROBBERY
made by the Court of Chancery, of the Province
5th day of April last past, and the report of James
Court at London, dated the thirtieth day of Decem-
xty-seven, and with the approbation of the said

TEMPER 19th 1868

OF THE CLOCK

ANKIN HOUSE,

Kent, by Richard Monck, auctioneer, duly named,
west half of lot number five, and broken front, in
County of Elgin, containing one hundred and twenty

deposit in the proportion of \$20 for every \$100 of his purchase money to the
purchase money on the seventeenth day of October next.

John Gibb, of the Township of Aldborough, in the County of Elgin, yeoman,

conditions of sale are the standing conditions of sale of the said Court of

obtained at the Chambers of the said Master, at London, at the office of C. R.
of Messrs. Scatchard & Meredith, Barristers, London.

thousand eight hundred and sixty-eight.

J. SHANLY,

Master in Chancery, London.

