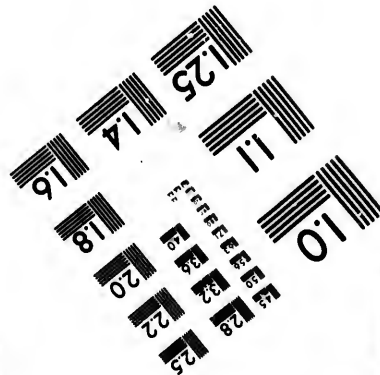
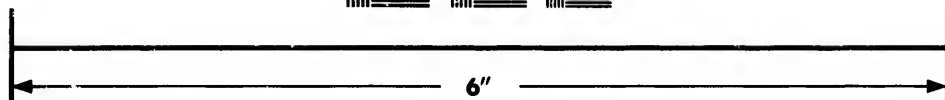
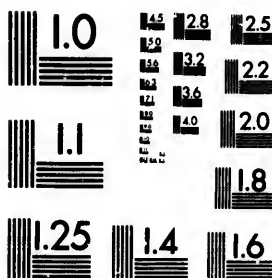


**IMAGE EVALUATION
TEST TARGET (MT-3)**



**Photographic
Sciences
Corporation**

23 WEST MAIN STREET
ROCHESTER, N.Y. 14580
(716) 872-4503



**CIHM/ICMH
Microfiche
Series.**

**CIHM/ICMH
Collection de
microfiches.**



Canadian Institute for Historical Microreproductions / Institut canadien de microreproductions historiques



© 1985

Technical and Bibliographic Notes/Notes techniques et bibliographiques

The Institute has attempted to obtain the best original copy available for filming. Features of this copy which may be bibliographically unique, which may alter any of the images in the reproduction, or which may significantly change the usual method of filming, are checked below.

L'Institut a microfilmé le meilleur exemplaire qu'il lui a été possible de se procurer. Les détails de cet exemplaire qui sont peut-être uniques du point de vue bibliographique, qui peuvent modifier une image reproduite, ou qui peuvent exiger une modification dans la méthode normale de filmage sont indiqués ci-dessous.

- | | |
|--|--|
| <input type="checkbox"/> Coloured covers/
Couverture de couleur | <input type="checkbox"/> Coloured pages/
Pages de couleur |
| <input type="checkbox"/> Covers damaged/
Couverture endommagée | <input type="checkbox"/> Pages damaged/
Pages endommagées |
| <input type="checkbox"/> Covers restored and/or laminated/
Couverture restaurée et/ou pelliculée | <input type="checkbox"/> Pages restored and/or laminated/
Pages restaurées et/ou pelliculées |
| <input type="checkbox"/> Cover title missing/
Le titre de couverture manque | <input checked="" type="checkbox"/> Pages discoloured, stained or foxed/
Pages décolorées, tachetées ou piquées |
| <input type="checkbox"/> Coloured maps/
Cartes géographiques en couleur | <input type="checkbox"/> Pages detached/
Pages détachées |
| <input type="checkbox"/> Coloured ink (i.e. other than blue or black)/
Encre de couleur (i.e. autre que bleue ou noire) | <input checked="" type="checkbox"/> Showthrough/
Transparence |
| <input type="checkbox"/> Coloured plates and/or illustrations/
Planches et/ou illustrations en couleur | <input type="checkbox"/> Quality of print varies/
Qualité inégale de l'impression |
| <input type="checkbox"/> Bound with other material/
Relié avec d'autres documents | <input type="checkbox"/> Includes supplementary material/
Comprend du matériel supplémentaire |
| <input type="checkbox"/> Tight binding may cause shadows or distortion
along interior margin/
La reliure serrée peut causer de l'ombre ou de la
distortion le long de la marge intérieure | <input type="checkbox"/> Only edition available/
Seule édition disponible |
| <input type="checkbox"/> Blank leaves added during restoration may
appear within the text. Whenever possible, these
have been omitted from filming/
Il se peut que certaines pages blanches ajoutées
lors d'une restauration apparaissent dans le texte,
mais, lorsque cela était possible, ces pages n'ont
pas été filmées. | <input type="checkbox"/> Pages wholly or partially obscured by errata
slips, tissues, etc., have been refilmed to
ensure the best possible image/
Les pages totalement ou partiellement
obscurcies par un feuillet d'errata, une pelure,
etc., ont été filmées à nouveau de façon à
obtenir la meilleure image possible. |
| <input type="checkbox"/> Additional comments:/
Commentaires supplémentaires: | |

This item is filmed at the reduction ratio checked below/
Ce document est filmé au taux de réduction indiqué ci-dessous.

10X	14X	18X	22X	26X	30X
<input type="checkbox"/>	<input type="checkbox"/>	<input type="checkbox"/>	<input checked="" type="checkbox"/>	<input type="checkbox"/>	<input type="checkbox"/>
12X	16X	20X	24X	28X	32X

The copy filmed here has been reproduced thanks to the generosity of:

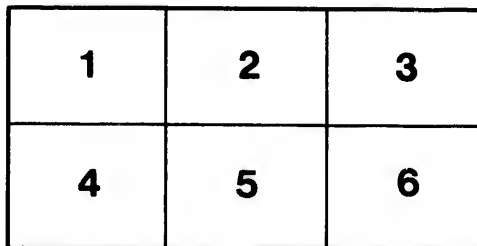
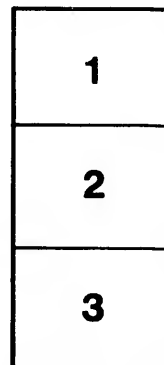
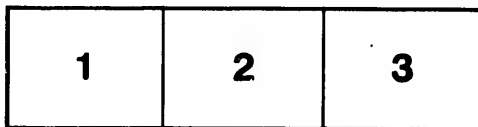
Library of the Public
Archives of Canada

The images appearing here are the best quality possible considering the condition and legibility of the original copy and in keeping with the filming contract specifications.

Original copies in printed paper covers are filmed beginning with the front cover and ending on the last page with a printed or illustrated impression, or the back cover when appropriate. All other original copies are filmed beginning on the first page with a printed or illustrated impression, and ending on the last page with a printed or illustrated impression.

The last recorded frame on each microfiche shall contain the symbol \rightarrow (meaning "CONTINUED"), or the symbol ∇ (meaning "END"), whichever applies.

Maps, plates, charts, etc., may be filmed at different reduction ratios. Those too large to be entirely included in one exposure are filmed beginning in the upper left hand corner, left to right and top to bottom, as many frames as required. The following diagrams illustrate the method:



L'exemplaire filmé fut reproduit grâce à la générosité de:

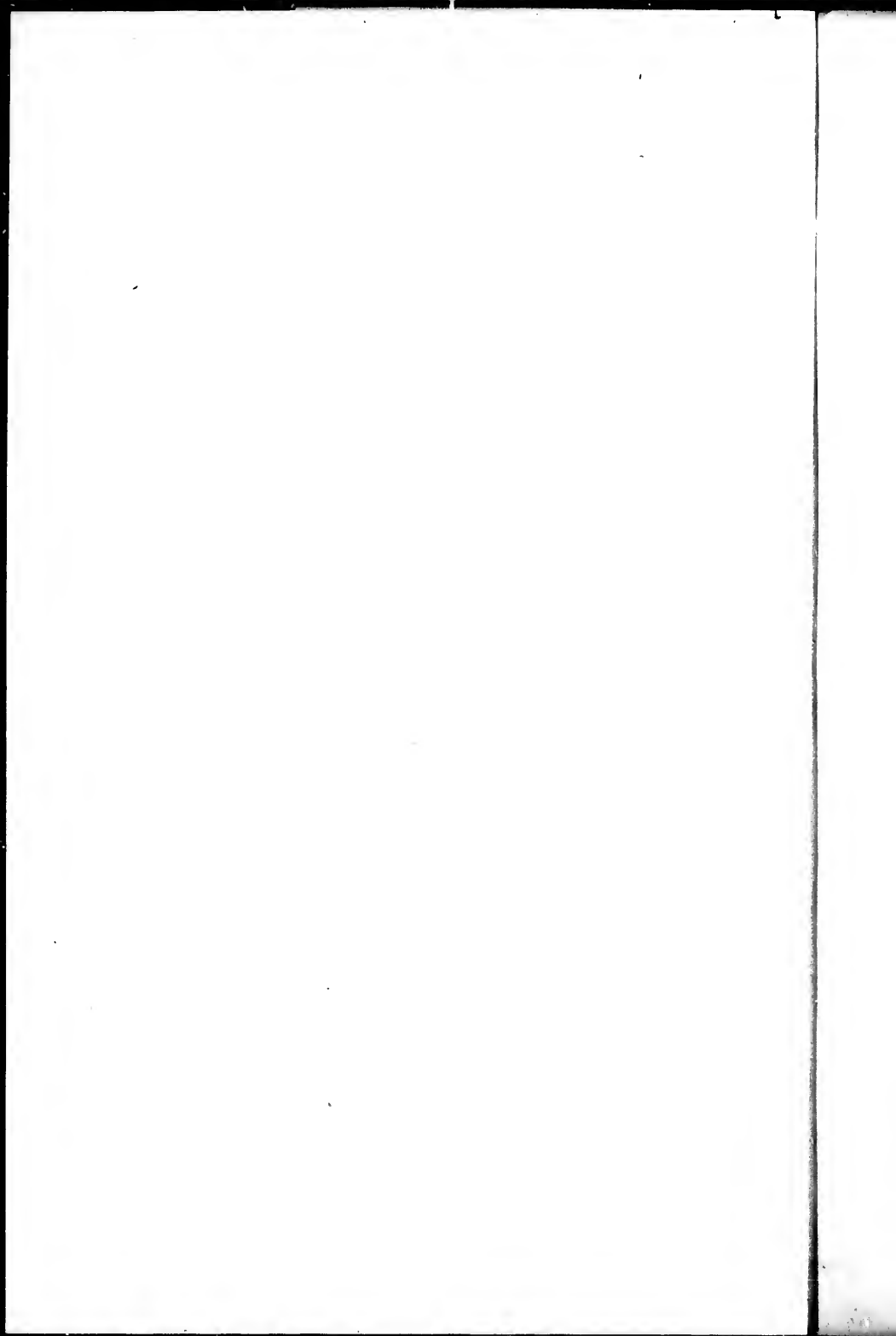
La bibliothèque des Archives
publiques du Canada

Les images suivantes ont été reproduites avec le plus grand soin, compte tenu de la condition et de la netteté de l'exemplaire filmé, et en conformité avec les conditions du contrat de filmage.

Les exemplaires originaux dont la couverture en papier est imprimée sont filmés en commençant par le premier plat et en terminant soit par la dernière page qui comporte une empreinte d'impression ou d'illustration, soit par le second plat, selon le cas. Tous les autres exemplaires originaux sont filmés en commençant par la première page qui comporte une empreinte d'impression ou d'illustration et en terminant par la dernière page qui comporte une telle empreinte.

Un des symboles suivants apparaîtra sur la dernière image de chaque microfiche, selon le cas: le symbole \rightarrow signifie "A SUIVRE", le symbole ∇ signifie "FIN".

Les cartes, planches, tableaux, etc., peuvent être filmés à des taux de réduction différents. Lorsque le document est trop grand pour être reproduit en un seul cliché, il est filmé à partir de l'angle supérieur gauche, de gauche à droite, et de haut en bas, en prenant le nombre d'images nécessaire. Les diagrammes suivants illustrent la méthode.



NORTH AMERICAN LIGHTS.

1847.

2 NEWFOUNDLAND, GULF AND RIVER ST. LAWRENCE,

WITH

No.	Name of Light.	Place	Latitude.		Longitude.		Number of the Lights, and Relative Positions.	Fixed, or Revolving.	Period of Revolution or Interval between the Flashes.	No.	M. sec. clo- se Weat.
			North.	West.	North.	West.					
1	Cape Bonavista.	On the extremity of the Cape.	48 42 0	53 8 0	1	.	R.	M. S. 2 0	1	.	
2	Harbour Grace.	On Islands at entrance.	47 42 20	49 58 23	1	.	F.	.	2	.	
3	St. John Harbour.	Fort Amherst.	47 33 24	52 43 20	1	.	F.	.	3	.	
4	Cape Spear.	On the Cape.	47 31 0	52 41 0	1	.	R.	1 0	4	.	
5	Cape Pine.	On the Cape.	46 39 0	53 38 0	5	.	
6	Miquelon Island. (French.)	Galatry Head.	46 45 30	56 9 6	1	.	F.	.	6	18	
7	Ditto. (French)	Canon Point, St. Pierre Harbour.	46 46 30	56 9 30	1	.	F.	.	7	3	
8	St. Paul Island.	On the North Point	47 14 0	60 11 17	1	.	F.	.	8	.	
9	Ditto.	On the South Point.	47 11 15	60 12 17	1	.	R.	.	9	.	
10	Anticosti Island.	Heath Point.	49 5 20	61 44 17	1	.	F.	.	10	.	
11	Ditto.	S.W. Point.	49 23 46	63 38 27	1	.	R.	1 0	11	25	
12	Point de Monts.	About a mile and quarter N.E. of the Point.	49 19 40	67 25 0	1	.	F.	.	12	2	
13	Bicquette Island.	Western Point.	48 25 20	68 56 30	1	.	R.	2.	13	20	
14	Red Island Bank.	On Red Island.	48 4 30	69 36 10	1	.	F.	.	14	.	
15	Green Island.	On the N.W. part.	48 3 25	69 28 15	1	.	F.	.	15	20	
16	Middle Ground	South Traverse.	47 22 20	70 17 50	2	.	F.	.	16	10	
17	Stone Pillar (South Traverse)	On Eastern part.	47 12 30	70 24 50	1	.	R.	1 30	17	20	
18	North Eastward of Richlieu Island	On the Main South side, distant 14 mile	.	.	2	.	F.	.	18	.	
19	On Richlieu Island.	Centre of Island.	.	.	1	.	F.	.	19	.	
20	Lake St. Peters.	3 miles N.E. of Flat Island, in 20 feet.	.	.	2	.	F.	.	20	.	
21	Bague Island	.	.	.	1	.	F.	.	21	366	
22	Montreal.	.	45 30 34	73 27 22	2	.	F.	.	22	45 453	
23	Lake Ontario.	Outer Drake Island.	43 57 0	76 54 0	1	.	F.	.	23	.	
24	Ditto.	Peter Point.	43 51 0	77 13 45	1	.	R.	1 0	24	.	
25	Ditto.	Newcastle Harbour, Eastern Point.	44 1 0	77 46 30	.	.	F.	.	25	.	
26	Ditto.	Peter Rock.	43 56 5	78 17 30	1	.	F.	.	26	.	

See Chart Page
X

Period of revolution or Interval between the Flashes.	No.	Miles seen in clear Weather.	If it be Harbour Light, Time when shown.	Colour, or any Peculiarity of the Building.	Height in feet of the Lantern above High Water.	Height in feet of the Building.	Year erected.	Remarks respecting the position or goodness of the Light, &c.
M. S. 2 0	1	. .	All night.	Red and White alternately	150		
. .	2	. .	Ditto.		Position uncertain.
. .	3	. .	Ditto.		
1 0	4	. .	Ditto.	275		
. .	5		Building.
. .	6	18	Ditto.		
. .	7	3	Harbour Light, all night.		Lighted from May to December.
. .	8	. .	All night.	140		
. .	9	. .	Ditto.	140		A bell rung during a fog.
. .	10	. .	Ditto.	White	100	82	1835	Not lighted for want of Funds -
1 0	11	25	Ditto.	White	109	76	1831	Seen from N.N.W. to S.E. by E. mag.
. .	12	20	Ditto.	Gr.	100 99	70	1830	Good Light. 17 Reflectors -
2 .	13	25	Ditto.	Gr.	100 104	65	1844	
. .	14	. .	Ditto.	Red	75	51	1848	Building.
. .	15	20	Ditto.	White Suspension	60 59	40	1809	
. .	16	10	Ditto.	Floating.		
1 30	17	20	Ditto.	White	85	40	1843.	
. .	18	. .	Ditto.	Floating.		
. .	19	. .	Ditto.	Wood	30	20	1842	a Small light of Massie build of Wood
. .	20	. .	Ditto.	Floating.		
. .	21	366	Red	14	14	1832	Position unknown.
. .	22	45 46.5	Red	39.6 28.11	31.6 21.6	1832	Position unknown.
. .	23	. .	Ditto.		
1 0	24	. .	Ditto.		
. .	25	. .	Ditto.		
. .	26	. .	Ditto.		

No.	Name of Light.	Place.	Latitude.		Longitude.		Number of the Lights, and Relative Positions.	Fixed, or Revolving.	Period of Revolu- tion, or Interval between the Flashes.	Miles seen in clear Weather.
			North.	West.	North.	West.				
37	Lake Erie.	North Foreland, or Long Point.	42 33 0	80 9 0	.	.	.	M. S.	27	..
38	Ditto.	Pelee Island.	28	..
39	River Detroit.	Goose Island.	29	..
30	Miramichi Bay.	Esoumeau Point.	47 4 36	64 50 30	1	.	F.	.	30	..
31	Prince Edward Is- land, Hillsborough Bay.	Point Prim.	46 3 12	63 6 30	1	.	F.	.	31	..
32	Pictou Harbour.	South Point of en- trance.	45 41 0	62 42 30	1	.	F.	.	32	..
33	Canso or Canso Gut.	Northern entrance, Western side.	45 41 15	61 26 30	1	.	F.	.	33	..
34	Canso.	Cranberry Island, on Northern part of the Island.	45 19 30	60 58 36	2	.	F.	.	34	..
35	Sydney Harbour.	On Eastern part of the entrance.	46 16 0	60 10 0	1	.	F.	.	35	..
36	Scatarie Island.	North Eastern part.	46 2 0	59 42 0	1	.	R.	.	36	..
37	Louisburgh Har- bour.	South Point of en- trance.	45 53 0	59 58 0	1	.	F.	.	37	..
38	Beaver Islands.	Eastern Beaver Is- land.	44 49 0	62 21 0	1	.	R.	2 0	38	..
39	Halifax Harbour.	Maughers Beach, Eastern side of entrance.	44 36 5	63 35 40	1	.	F.	.	39	..
40	Sambro Island.	On centre of Island.	44 26 17	63 35 16	1	.	F.	.	40	..
41	Malgouash, or Lunenburgh Bay.	Cross Island, South- East Point.	.	.	2	Vertical	Upper Re- volving, and lower Fixed.	1 0	41	..
42	Liverpool Bay.	Coffin Island, South Point.	44 1 50	64 40 49	1	.	R.	2 0	42	..
43	Shelburne Har- bour.	Cape Roseway, on Mc Nutt's Island, S.E. Point.	43 37 31	65 18 40	2	Vertical.	F.	.	43	..
44	Seal Island.	South Point.	43 23 50	65 59 42	1	.	F.	.	44	..
45	Cape Fourchu Is- land.	Western part.	43 47 0	66 10 30	1	.	R.	1 15	45	..
46	Dryer's Island.	Western part $\frac{1}{2}$ a mile inshore.	44 13 51	66 26 54	1	.	F.	.	46	..
47	Annapolis, or Digby Gut.	South side of en- trance.	44 40 30	65 50 15	1	.	F.	.	47	..
48	Cape Enrage.	On the pitch of the Cape.	45 36 0	64 28 0	1	.	F.	.	48	..

Day.	Period of Revolution, or Interval between the Flashes.	No.	Miles seen in clear Weather.	If it be Harbour Light, Time when shown.	Colour, or any Peculiarity of the Building.	Height in feet of the Lantern above High Water.	Height in feet of the Building.	Year erected.	Remarks respecting the position or goodness of the Light, &c.
	M. S.	27	. .	All night.	
	. .	28	. .	Ditto.	Position not known,
	. .	29	. .	Ditto.	Position unknown,
	. .	30	. .	Ditto.	. .	70	
	. .	31	. .	Ditto.	. .	68	
	. .	32	. .	Ditto.	. .	65	For eight months in the year.
	. .	33	. .	Ditto.	. .	115	
	. .	34	. .	Ditto.	In one tower, vertical.
	. .	35	. .	Ditto.	. .	160	85	. .	
	. .	36	. .	Ditto.	. .	90	
	. .	37	. .	Ditto.	. .	85	
	2 0	38	. .	Ditto.	White, with two black balls seaward.	70	
	. .	39	. .	Ditto.	. .	58	
	. .	40	. .	Ditto.	. .	132	
ed.	1 0	41	. .	Ditto.	Red.
ed.	2 0	42	. .	Ditto.	. .	90	
	. .	43	. .	Ditto.	. .	150 114	
	. .	44	. .	Ditto.	. .	80	
	1 15	45	. .	Ditto.	. .	135	
	. .	46	. .	Ditto.	. .	92	
	. .	47	. .	Ditto.	. .	76	
	. .	48	. .	Ditto.	. .	138	

No.	Name of Light.	Place.	Latitude.		Longitude.		Number of the Lights, and Relative Positions.	Fixed, or Revolving.	Period of Revolution, or Interval between the Flashes.	No.	Miles seen in clear Weather.
			North.	West.	North.	West.					
49	Quaco.	On an Islet.	0 23 0	0 19 0	1		R	M. S.	49		
50	St. John Harbour.	Partridge Island.	45 14 3	66 3 5	1		F.		50		
51	Ditto.	Beacon Tower.	45 15 0	66 3 15	1		F.		51		
52	Point Lepreau.	On the Point.	45 4 0	66 28 0	2	Vertical, 23 feet apart.	F.		52		
53	Campobello Island.	North part of the Island.	44 56 50	66 56 58	1		F.		53		
54	St. Andrew Port.	North entrance.	45 4 13	67 3 48	1		F.		54		
55	Machias Seal Islands.	Southernmost One.	44 30 10	67 1 12	2		F.		55		
56	Gannet Rock.	On Southern part.	44 30 0	66 49 0	1		R.		56		
57	Bermudas Isles.	Gibb's Hill.	32 14 54	64 52 0	1		R.	0 54	57	30	

from page 7
X

Repentigny
Lambert
St. aux Raisins
Point du Lac
Port St. Francis - 2
Cape de la Magdelaine - 4
Champlain
St. Jean - 2
St. Pierre les Negrettes
Rivier du Chene
L'Islet
St. Pierre - 2

344

ISWICK, AND BERMUDAS.

ed, olving.	Period of Revolu- tion or Interval between the Flashes.	No.	Miles seen in clear Weather.	If it be Harbour Light, Time when shown.	Colour, or any Peculiarity of the Building.	Height in feet of the Lantern above High Water.	Height in feet of the Building.	Year erected.	Remarks respecting the position or goodness of the Light, &c.
	M. A.	49	.	All night.	
	.	50	.	Ditto.	.	119	.	.	A bell is rung in foggy weather.
	.	51	.	Harbour Light.	
	.	52	.	All night.	
	.	53	.	Ditto.	.	72	.	.	
	.	54	.	Ditto.	.	35	.	.	
	.	55	.	Ditto.	.	60	.	.	E.S.E. and W.N.W., 200 feet asunder.
	.	56	.	Ditto.	.	90	.	.	
0 54	.	57	30	Ditto.	.	362	.	1846	Excellent.
			347						

LONDON :
Printed by W. Clowes and Sons, 14, Charing Cross,
For Her Majesty's Stationery Office.

