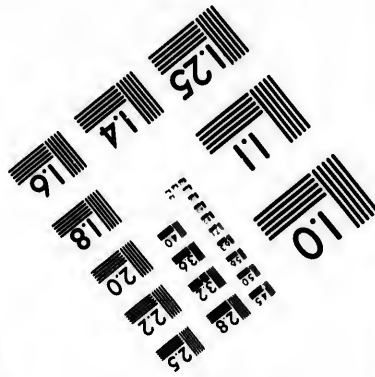
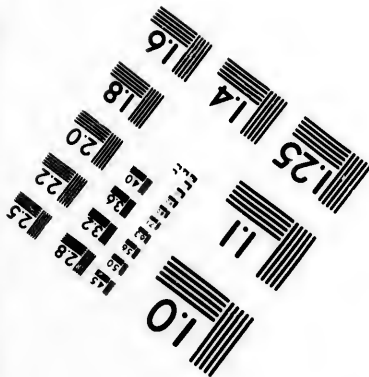
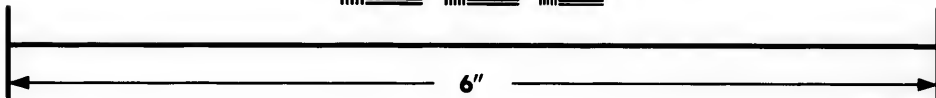
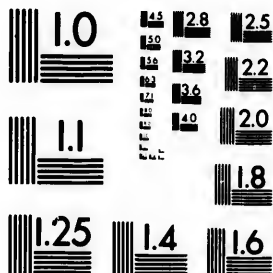


**IMAGE EVALUATION  
TEST TARGET (MT-3)**



**Photographic  
Sciences  
Corporation**

23 WEST MAIN STREET  
WESTER, N.Y. 14580  
(716) 872-4503

15 28  
16 32  
18 25  
20 22  
24

**CIHM/ICMH  
Microfiche  
Series.**

**CIHM/ICMH  
Collection de  
microfiches.**



Canadian Institute for Historical Microreproductions / Institut canadien de microreproductions historiques

11  
10  
5

**© 1982**

Technical and Bibliographic Notes/Notes techniques et bibliographiques

The Institute has attempted to obtain the best original copy available for filming. Features of this copy which may be bibliographically unique, which may alter any of the images in the reproduction, or which may significantly change the usual method of filming, are checked below.

L'Institut a microfilmé le meilleur exemplaire qu'il lui a été possible de se procurer. Les détails de cet exemplaire qui sont peut-être uniques du point de vue bibliographique, qui peuvent modifier une image reproduite, ou qui peuvent exiger une modification dans la méthode normale de filmage sont indiqués ci-dessous.

- Coloured covers/  
Couverture de couleur
- Covers damaged/  
Couverture endommagée
- Covers restored and/or laminated/  
Couverture restaurée et/ou pelliculée
- Cover title missing/  
Le titre de couverture manque
- Coloured maps/  
Cartes géographiques en couleur
- Coloured ink (i.e. other than blue or black)/  
Encre de couleur (i.e. autre que bleue ou noire)
- Coloured plates and/or illustrations/  
Planches et/ou illustrations en couleur
- Bound with other material/  
Relié avec d'autres documents
- Tight binding may cause shadows or distortion  
along interior margin/  
La reliure serrée peut causer de l'ombre ou de la  
distortion le long de la marge intérieure
- Blank leaves added during restoration may  
appear within the text. Whenever possible, these  
have been omitted from filming/  
Il se peut que certaines pages blanches ajoutées  
lors d'une restauration apparaissent dans le texte,  
mais, lorsque cela était possible, ces pages n'ont  
pas été filmées.
- Additional comments:/  
Commentaires supplémentaires:

- Coloured pages/  
Pages de couleur
- Pages damaged/  
Pages endommagées
- Pages restored and/or laminated/  
Pages restaurées et/ou pelliculées
- Pages discoloured, stained or foxed/  
Pages décolorées, tachetées ou piquées
- Pages detached/  
Pages détachées
- Showthrough/  
Transparence
- Quality of print varies/  
Qualité inégale de l'impression
- Includes supplementary material/  
Comprend du matériel supplémentaire
- Only edition available/  
Seule édition disponible
- Pages wholly or partially obscured by errata  
slips, tissues, etc., have been refilmed to  
ensure the best possible image/  
Les pages totalement ou partiellement  
obscurcies par un feuillet d'errata, une pelure,  
etc., ont été filmées à nouveau de façon à  
obtenir la meilleure image possible.

This item is filmed at the reduction ratio checked below/  
Ce document est filmé au taux de réduction indiqué ci-dessous.

10X	12X	14X	16X	18X	20X	22X	24X	26X	28X	30X	32X
			✓								

The copy filmed here has been reproduced thanks to the generosity of:

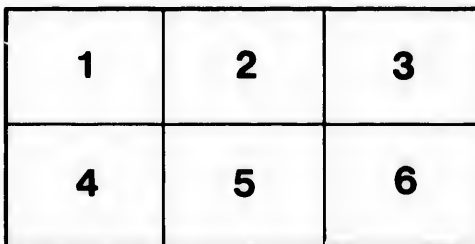
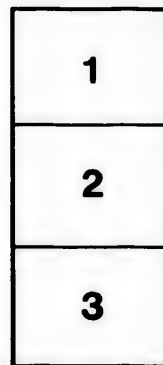
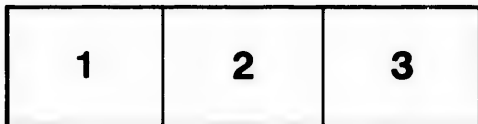
The Nova Scotia  
Legislative Library

The images appearing here are the best quality possible considering the condition and legibility of the original copy and in keeping with the filming contract specifications.

Original copies in printed paper covers are filmed beginning with the front cover and ending on the last page with a printed or illustrated impression, or the back cover when appropriate. All other original copies are filmed beginning on the first page with a printed or illustrated impression, and ending on the last page with a printed or illustrated impression.

The last recorded frame on each microfiche shall contain the symbol  $\rightarrow$  (meaning "CONTINUED"), or the symbol  $\nabla$  (meaning "END"), whichever applies.

Maps, plates, charts, etc., may be filmed at different reduction ratios. Those too large to be entirely included in one exposure are filmed beginning in the upper left hand corner, left to right and top to bottom, as many frames as required. The following diagrams illustrate the method:



L'exemplaire filmé fut reproduit grâce à la générosité de:

The Nova Scotia  
Legislative Library

Les images suivantes ont été reproduites avec le plus grand soin, compte tenu de la condition et de la netteté de l'exemplaire filmé, et en conformité avec les conditions du contrat de filmage.

Les exemplaires originaux dont la couverture en papier est imprimée sont filmés en commençant par le premier plat et en terminant soit par la dernière page qui comporte une empreinte d'impression ou d'illustration, soit par le second plat, selon le cas. Tous les autres exemplaires originaux sont filmés en commençant par la première page qui comporte une empreinte d'impression ou d'illustration et en terminant par la dernière page qui comporte une telle empreinte.

Un des symboles suivants apparaîtra sur la dernière image de chaque microfiche, selon le cas: le symbole  $\rightarrow$  signifie "A SUIVRE", le symbole  $\nabla$  signifie "FIN".

Les cartes, planches, tableaux, etc., peuvent être filmés à des taux de réduction différents. Lorsque le document est trop grand pour être reproduit en un seul cliché, il est filmé à partir de l'angle supérieur gauche, de gauche à droite, et de haut en bas, en prenant le nombre d'images nécessaire. Les diagrammes suivants illustrent la méthode.

NOVA SCOTIA  
LEGISLATIVE LIBRARY



PROVINCE HOUSE

Bermudas- 712

TO THE

**MASTER**

OF ANY

**VESSEL**

**ARRIVING OFF THESE ISLANDS**

**IN WANT OF ASSISTANCE.**

1882:

PRINTED AT THE "WESLEYAN" OFFICE, 141 GRANVILLE STREET,  
HALIFAX, N.S.

1870

1870

1870

1870

1870

1870

1870

1870

TO THE  
MASTER  
OF ANY  
VESSEL  
ARRIVING OFF THESE ISLANDS  
IN WANT OF ASSISTANCE.

1882:  
PRINTED AT THE "WESLEYAN" OFFICE 141 GRANVILLE STREET,  
HALIFAX. N.S.



2162

Bermuda, 1882.

Dear Sir:

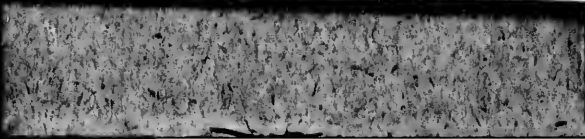
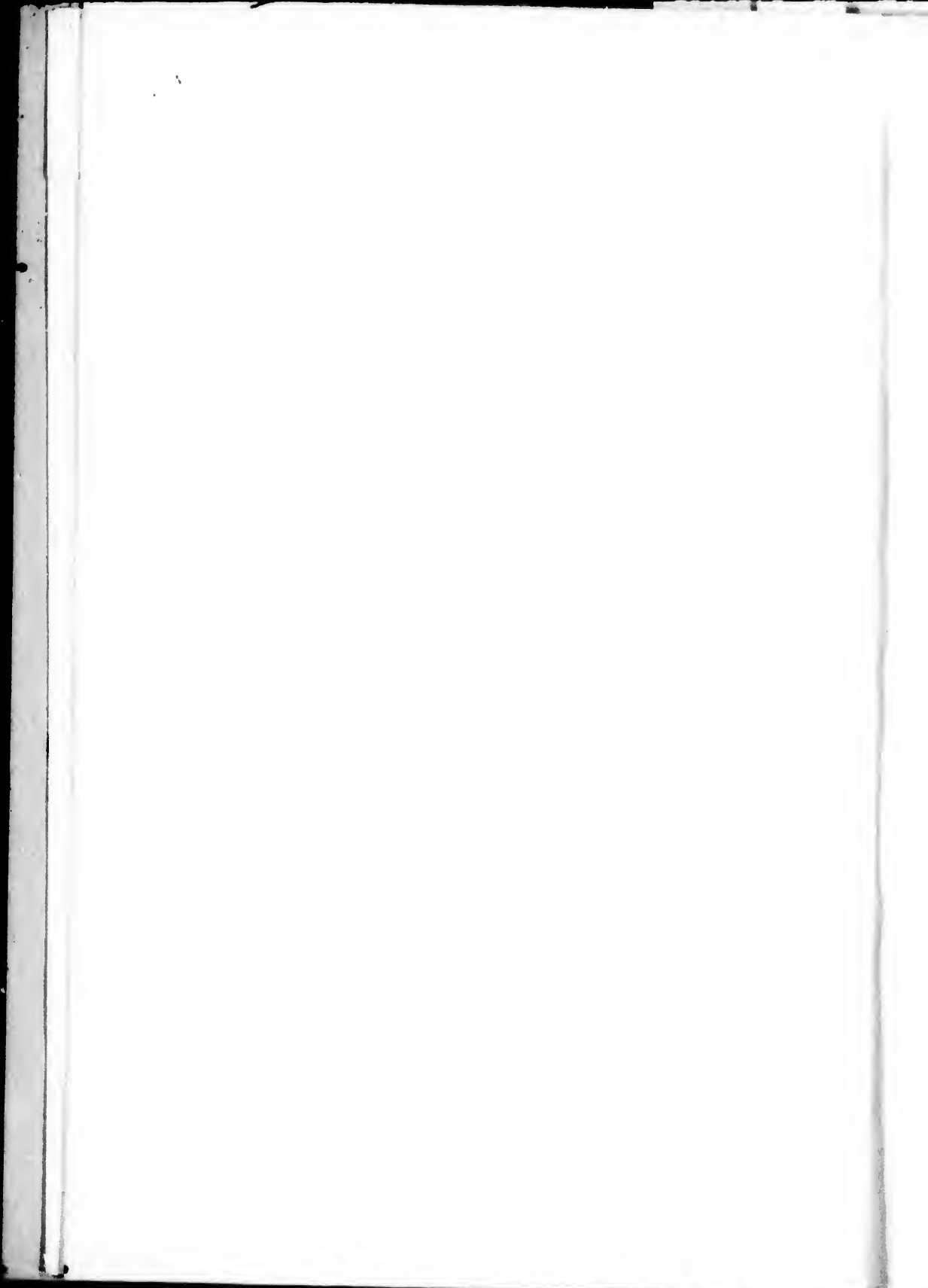
Having been engaged in the Shipping and Commission Business at these Islands for over thirty-five years, and presuming you are unacquainted with parties here, we beg to offer our services and herewith enclose our Card. Having the confidence of the Underwriters and some of the principal Ship Owners of the United States (where we resided some years) and North American Provinces, we are in a position from our long experience in Commercial and Insurance Business to render such advice and assistance as will tend to the speedy and favorable settlement of all average claims on Underwriters.

The Port of St. George offers facilities for repairs not obtainable at other parts of the Island, and on reasonable terms, and we would respectfully advise and warn you not to compromise yourself in any way in the disposal of your business until after your arrival in port, if you will then kindly give us a call, you will be better able to judge the best course to pursue for the protection of the interests under your care and control.

We are,

Yours faithfully,

**W. C. HYLAND & Co.**



**We are Special Agents for the Undersigned  
Mercantile Houses.**

Messrs. Funch, Edye & Co.....	New York
“ Boyd & Hincken.....	“
“ James W. Elwell & Co.....	“
“ C. L. Wright & Co.....	“
“ Slocovich & Co.....	“
“ Snow & Burgess.....	“
“ James E. Ward & Co.....	“
“ Lunt Bros. ....	“
“ Simpson & Shaw.....	“
“ H. D. & J. N. Brookmore.....	“
“ Lauro, Storey & Co.....	“
“ J. F. Pendergast.....	“
“ John Zittlosen.....	“
“ Theodore Ruger.....	“
“ Burdett & Pond.....	Boston
“ John S. Emery & Co.....	“
“ G. W. Hunter & Co.....	“
“ George Wheelwright.....	“
“ Robert Robertson & Son.....	St. John N. B.
“ James W. Carmichael & Co.....	New Glasgow
“ D. McKenzie.....	“ “
“ Richards, Power & Co.....	Swansea Wales

The Following List of Vessels under disaster which have passed through our hands within the last fifteen years speaks for itself.

1867

Description.	Name of Vessel.	Name of Captain.
American Steamer	<i>Worcester</i>	J. C. Graham
" Ship	<i>City of Montreal</i>	J. C. Daggott
" Bark	<i>Pathfinder</i>	A. Stahl
" "	<i>Magdalena</i>	C. Enell
" "	<i>Antelope</i>	White
" "	<i>James E. Ward</i>	J. Landerkin
" Brig.	<i>Aurate</i>	F B Davis
" "	<i>George Gilchrist</i>	Alden Gilchrist
" "	<i>Henry &amp; Louise</i>	Joseph Potter
" "	<i>Queen of the South</i>	William Anderson
" "	<i>Time</i>	E Manning
" "	<i>A. G. Jewett</i>	Reed
" Schr.	<i>Three Sisters</i>	A Simmons
" "	<i>Superior</i>	A Smith
" "	<i>Sedona</i>	Tell
" "	<i>Ann Carlett</i>	Jarvis
" "	<i>Petrel</i>	Morris
" "	<i>Ellen Rodmond</i>	Lambert
English Bark	<i>Thomas Whitney</i>	J C Kelly
" "	<i>Campanero</i>	J Speights
" "	<i>Jane Ross</i>	H. C. Middleton
" "	<i>Norn</i>	Alfred Johnson
" "	<i>Ellona</i>	Morine
" Brig.	<i>Flora</i>	Roberts
" "	<i>R. C. Wright</i>	J W Hugg
" "	<i>W. A. Rogers</i>	McCullock
" "	<i>Arosetta</i>	W Whalen
" "	<i>Karnak</i>	G S Locke
" "	<i>Quick</i>	G J LeCoutner
" "	<i>Lauravena</i>	Briffett
" "	<i>Lady of the Lake</i>	Oaterbridge
" "	<i>Corrira</i>	Briffett
" "	<i>Prince of Wales</i>	_____
" "	<i>Julia Kelly</i>	_____

## 1867—Continued.

English	Brig	<i>Asia</i>	J Gaudin
"	Schr.	<i>Search</i>	Bocklebank
"	"	<i>McMillan</i>	Walter Burke
"	"	<i>Amelia</i>	T Fitchett
"	"	<i>Mary Barden</i>	M. LeBlanc
"	"	<i>Swan</i>	Brewster
"	"	<i>Annie Eaton</i>	
Danish	Brigt.	<i>W. D. Bickford</i>	C Larsen
Italian	Brig.	<i>Pollux</i>	F W Seehusen
"	"	<i>Stefania</i>	R Cappola
"	"	<i>Anastasia</i>	Ferrando
Russian	Bark	<i>Julie</i>	
French	"	<i>Simon</i>	C Jaques

1868.

Descript'	Vessels Name	Capt's. Name.	Port
Am. Str.	<i>Relief</i>	Williams	New York
" "	<i>Catherine Whiting</i>	Berry	" "
" "	<i>H. J. Davidson</i>	French	Philadelphia
" Ship	<i>Virginia</i>	S Barker	_____
" "	<i>Grace Sargent</i>	Harding	Bath
" "	<i>Artisan</i>	Hair	Boston
" Bark	<i>Libertad</i>	Jordan	"
" "	<i>E. Shultz</i>	Russell	Philadelphia
" Brig	<i>J. B. Kerby</i>	Outerbridge	"
" "	<i>Rolerson</i>	Scott	Boston
" "	<i>Crimea</i>	Paterson	Stockton
" "	<i>Nellie Clifford</i>	Littlefield	Bangor
" "	<i>Lark</i>	Hugins	Baltimore
" "	<i>R. C. Wright</i>	Waruer	"
" "	<i>Ella</i>	V D Pool	New York
" "	<i>George Crump</i>	French	Philadelphia
" Schr.	<i>Trade Wind</i>	Carson	"
" "	<i>Fawn</i>	Fish	Boston
" "	<i>Trade Wind (2)</i>	Carson	Philadelphia
" "	<i>Emily Ann</i>	Meyer	New York
" "	<i>Mollie</i>	Plumber	" "
Eng. Ship	<i>Admiral</i>	Sutton	Liverpool, GB
" Bark	<i>Lookout</i>	Ford	" "
" "	<i>Annie</i>	Shaw	Yarmouth, NS
" "	<i>Forrest Flower</i>	Burgest	Liverpool, GB
Eng. Brig	<i>Millicent</i>	Clarkson	Barbados
" "	<i>Express</i>	Brannon	Halifax
" "	<i>Florence</i>	Kirkpatrick	Slingo
" "	<i>Brilliant</i>	Morris	St. John, N B
" "	<i>M. J. Williams</i>	Hunt	Shelburne
" "	<i>Eunice</i>	J. E. Barker	Halifax
" "	<i>Kirkland</i>	McDougal	Arichat
" "	<i>Undaunted</i>	Jackman	Newfoundl'd
" "	<i>W. A. Rogers</i>	Saunders	Yarmouth
" "	<i>Romatue</i>	Card	"
" Schr.	<i>Laura Pride</i>	Hazel	St. Kitts
Ger. Bark	<i>Argus</i>	Langhenrichs	_____
" Brig	<i>Margaretha</i>	Wulff	_____
	<i>Wilhelmine</i>		

Descript'.	Name of Vessel.	Captains Name.	Port.
Am Ship	<i>Constellation</i>	William Eves	New York
" Bark	<i>Eureka</i>	B Holloway	" "
" "	<i>Sarepta</i>	C F Hardie	Bath
" Brig	<i>Star Castle</i>	H Clay	New Bedford
" "	<i>Matron</i>	A S Megathlin	Hardwich
" "	<i>Rolerson</i>	T Scott	Boston
" Schr.	<i>J B Vandusen</i>	H H Foster	Portland
" "	<i>Admiral Blake</i>	A H Hammond	Marion
" "	<i>Zampa</i>	W Huntley	Bath
" "	<i>Ella G. McLane</i>	G W Cook	New York
" "	<i>Etta</i>	L E Jackson	" "
" "	<i>Laura A Dodd</i>	G A Lane	Gloucester
Br. Ship	<i>Koomar</i>	A J Griffin	London
" "	<i>Island Home</i>	J Liswell	Yarmouth
" "	<i>Lady Havelock</i>	J McNab	Liverpool
" Bark	<i>Brothers Pride</i>	Norval Smith	St. Johns
" "	<i>Millicete</i>	J Wren	Yarmouth
" "	<i>Arguam</i>	J Argus	London
" "	<i>Mary Baker</i>	J M Hilton	Yarmouth
" "	<i>Jeff Davis</i>	B B Sharp	Liverpool
" Brig	<i>Cheviot</i>	H Whitney	St. Johns
" "	<i>Florence</i>	L Davidson	Halifax
" "	<i>Southern Cross</i>	M A Brown	St. Johns
" "	<i>Victoirt</i>	J Smith	Yarmouth
" "	<i>Two Brothers</i>	D Wallace	St Johns
" "	<i>Alva</i>	R Armstrong	St Johns
" "	<i>Julia Kelly</i>	A W Walker	Parsboro
" "	<i>R. Mc K Spearing</i>	S W Clark	Quebec
" "	<i>Ida C</i>	J Himes	Liverpool, NS
" "	<i>Victoria</i>	R Purdy	St. Johns
" "	<i>Industry</i>	F S Perry	Barbados
" Schr.	<i>Mischief</i>	W Hopewell	Halifax
" "	<i>Arrow</i>	J McDougal	P E Islands
Ger Bark	<i>Anna</i>	F Pickert	_____
Swe Brig	<i>Swartrick</i>	M Nasholmn	_____
Ita "	<i>Carmine</i>	N Ferrara	Gergeante
SpanSchr	<i>Hidalgua</i>	R Romereiz	Cadiz
Port. "	<i>Marie Emma</i>	J Brettio	_____
Fre. Bark	<i>Alfred &amp; Marie</i>	J Russel	Bordeaux
" Str.	<i>La Pique</i>	_____	_____



Description	Vessels Name.	Capt. Name	Port.
Am.	Bark <i>Adeline C. Adams</i>	Leavitt	New York
"	" <i>Alfred</i>	Burt	" "
"	" <i>Carlotta</i>	F A Merrill	" "
"	" <i>John Edney</i>	Hopkins	" "
"	" <i>Mary C. Dyer</i>	Hopkins	" "
"	" <i>Gem</i>	Powers	Boston
"	Brig <i>Oliver</i>	Bornholm	New York
"	" <i>Jeff Davis</i>	Scott	Boston
"	" <i>L &amp; W Armstrong</i>	Wright	New York
"	" <i>Sancho</i>	Burke	" "
"	Steamer <i>Santiago de Cuba</i>	Jones	" "
"	" <i>Wm Taber</i>	Hutchinson	" "
"	Schr. <i>Frank Howard</i>	Dermot	Thomaston
"	" <i>Clara Bell</i>	Amesbury	Candea
"	" <i>Thoms Holcombe</i>	Maxey	New York
"	" <i>W D Bickford</i>	Shannon	Boston
"	" <i>Abie Pitman</i>	Lombard	"
British Ship	<i>Portlaw</i>	Rice	Liverpool G B
"	Bark <i>Gabalva</i>	Hyde	" "
"	" <i>Chaturanga</i>	Hardy	Sunderland
"	" <i>Stella</i>	Hammond	St Johns
"	Brig <i>Rover</i>	Flavin	Halifax
"	" <i>Iris</i>	Hatfield	St Johns
"	Schr. <i>Tangerine</i>	Bowyear	Plymouth
Danish Brig	<i>S A Holbrook</i>	Borstell	St. Thomas
Dutch Schr.	<i>Aduard</i>	Alderschoff	Rotterdam
Norw. Bark	<i>Saga</i>	Peterson	Rostock .
Aus. Figlia	<i>Alexandra</i>	Mehanovich	Trieste

Descript'.		Vessels Name.	Capt. Name.	Port.
Am.	Str.	<i>Guiding Star</i>	J B Hindreth	New York
"	Bark	<i>Caroline Lamont</i>	Bowker	Brunswick, Me
"	"	<i>T H Armstrong</i>	Bowers	Providence, RI
"	"	<i>LaCiguena</i>	E Ross	New York
"	Brig	<i>William Mason</i>	Small	Boston
"	"	<i>E. S. Twisden</i>	Chase	"
"	"	<i>Trial</i>	Leach	New York
"	Schr	<i>Admiral Blake</i>	Hammond	New Bedford
"	"	<i>John Randolph</i>	Snow	" "
"	"	<i>Althea</i>	Smith	Wilmington, Del
"	"	<i>Abbott Lawrence</i>	Mayo	Boston
"	"	<i>E G Knight</i>	McAllister	Camden
"	"	<i>Life Boat</i>	Law	Provincetown
Br.	Ship	<i>Margaret</i>	Roach	Liverpool
"	"	<i>Angilique</i>	McBurnie	St. John, N.B.
"	Bark	<i>Queen Victoria</i>	Leyne	Dublin
"	"	<i>Balnagith</i>	Nankivel	London
"	"	<i>Thomas</i>	McLellan	"
"	"	<i>Queen of the Isles</i>		"
"	Brig	<i>Okenbury</i>	Goodyear	Salcombe
"	"	<i>Zingara</i>	Hodges	Biddeford
"	"	<i>Ellen H</i>	Dwyer	St. John, N B
"	"	<i>Torrid Zone</i>	Kirkham	Demerara
"	"	<i>Clara</i>	Nichols	Londen
"	"	<i>Isabel</i>	Davis	Cardiff
"	(3)Schr	<i>Annie Bayard</i>	Whelpley	St. John
"	"	<i>St. Hubert</i>	Forgeron	Arichat
"	"	<i>Clara Jenkins</i>	Frisbie	Annapolis
"	"	<i>True Blue</i>	Ireland	Shelburne
"	"	<i>Torbay Lass</i>	Penny	Salcombe
Br.	Bark	<i>Alcyon</i>	Averoz	Marseilles
Nor.	"	<i>Ceylon</i>	Andressen	Bergen
"	"	<i>Claus Heftye</i>	Andressen	"
"	"	<i>St. Olaf</i>	Bornstein	"

Descript.	Vessels Name.	Captain Name.	Port.
Am. Ship	<i>Calcutta</i>	J Robertson	PortsmouthNH
" "	<i>Wm Cummings</i>	G E Miller	Philadelphia
Br. "	<i>Denmark</i>	R Ingham	Liverpool, G B
" "	<i>Damio</i>	W E Allen	London
Ger. "	<i>Savannah</i>	J Weissenhorn	Bremen
Am. "	<i>Addie McAdam</i>	F L Partridge	New York
" "	<i>Continental</i>	J Doane	Boston
" "	<i>Dover</i>	N Stilphen	Wilmington Del
" "	<i>Fleetwing</i>	Lewis Davis	New York
Br. "	<i>Flora</i>	John Sharer	London
" "	<i>Robert Pulsford</i>	Wm Edwards	Liverpool
" "	<i>Liberator</i>	Wm Watson	Shields
" "	<i>Sarah Sloam</i>	Wm Sloam	St John, N B
" "	<i>Ida E</i>	J M Doane	" "
" "	<i>Carleton</i>	N Burkeo	Yarmouth, N S
" "	<i>Lochnagar</i>	Wm Neill	London
" "	<i>Argosy</i>	J Parker	Shoreham, Eng
" "	<i>Satellite</i>	J Bareson	Banff, Scotland
Ita'n "	<i>Stephano</i>	N Lavagna	Genoa
Fr "	<i>Carlotta</i>	A F Salge	Oran
Rus "	<i>India</i>	U Grape	Uleaborg, Rus.
Br. "	<i>Hattie Eaton</i>	A M Dyer	Demerara
" "	<i>Daisy</i>	F Radford	Bristol, Engla'd
Am. Brig	<i>Goldfinder</i>	J Young	Boston
" "	<i>Proteus</i>	J T Hall	Portland
Br. "	<i>Marcella</i>	J Purdy	Halifax, NS
" "	<i>Three Sisters</i>	R S Rich	Quebec
" "	<i>Torrid Zone</i>	J R Kirkham	Demerara
" "	<i>Queen of the West</i>	J G Bollong	Halifax, N.S.
" "	<i>Naiad</i>	William Eve	Bermuda
Dom "	<i>Gustavo</i>	J Biemann	Porto Plato, SD
Am Sch	<i>Mary Chilton</i>	L Parsons	Plymouth, Mass
" "	<i>Jason</i>	W F Willey	Machias
" "	<i>Willard G Patton</i>	J Howes	Boston
" "	<i>Hortensia</i>	Wm H Norton	Machias
" "	<i>Abbot Lawrence</i>	Thomas Mayo	Boston
" "	<i>Starlight</i>	F E Hopkins	Bath
Br. "	<i>Mocking Bird</i>	R Holder	St John, N B

## 1873

Descript.	Vessels Name.	Capt Name.	Port.
Steamship	<i>A Winants</i>	Quinn	New York
"	<i>Relief</i>	Walcott	" "
Ship	<i>Republic</i>	Corning	Yarmouth NS
Bark	<i>Sarnia</i>	Pellow	St John, N B
"	<i>Continental</i>	Doane	Boston
"	<i>Modena</i>	Lang	"
"	<i>Fearless</i>	Borden	Yarmouth NS
"	<i>Crownshield</i>	Praro	Fairhaven
Brig	<i>Acadia</i>	Horton	Demerara
"	<i>Longreach</i>	Currier	Bath
"	<i>Village Bell</i>	Manthorn	Liverpool NS
"	<i>Wild Hunter</i>	Langblois	Halifax, N S
"	<i>George Wheelwright</i>	McLaughlin	Liverpool NS
Schooner	<i>Ocean Pearl</i>	Blanchard	New York
"	<i>Evergreen</i>	Spicer	Parrsboro NS
"	<i>Mary Baker</i>	Thompson	Falm'th Mass

## 1874

Ship	<i>Calumet</i>	Cheever	New York
"	<i>Elizabeth Hamilton</i>	Hiltou	New York
Steamship	<i>Rising Star</i>	Jones	" "
Bark	<i>Charles</i>	Lemaitre	France
"	<i>Assunta</i>	Cilento	Naples
"	<i>Cassa Maritime</i>	Olivare	Genoa
Brig	<i>Georgia</i>	Miller	Baltimore
"	<i>Anna D. Torrey</i>	Haskell	Deer Island
"	<i>Lingia e Rosa</i>	Costa	Genoa
"	<i>Wave</i>	Fader	Liverpool NS
"	<i>Maud</i>	Melsaac	Fleetwood En
"	<i>James Coffill</i>	Clucas	Liverpool NS
"	<i>Aurora</i>	Dodd	Pictou
Schooner	<i>Frank Jameson</i>	Jameson	Rockland
"	<i>Edith May</i>	Gross	Wellfleet
"	<i>Carrie Bentley</i>	Falkenbury	New York

1875

Descript.	Vessels Name.	Capt. Name.	Port.
Bark	<i>Captain Dan</i>	White	Pictou
"	<i>Theophile Marie</i>	LeBreton	France
"	<i>Impero</i>	Fulton	Halifax N S
"	<i>James E Ward</i>	Lusgang	New York
"	<i>LaCiguena</i>	Ryley	" "
"	<i>Harvest Morn</i>	Ryley	" "
Brig	<i>Helen O Phinney</i>	Boyd	Portland
"	<i>Guisborough</i>	Schulenberg	Windsor, NS
"	<i>Medusa</i>	Jones	Liverpool Eng
"	<i>Mary C Rosevelt</i>	White	Richmond Me
"	<i>Grace Kelly</i>	Harnett	Barbados
"	<i>Talbot</i>	Moses	London
"	<i>M P Harrington</i>	Starrett	Liverpool NS
"	<i>Ella</i>	Como	Parrsboro
"	<i>Mary</i>	Forrest	Halifax
"	<i>Anna</i>	McKean	Lockport
"	<i>Neponset</i>	Strout	Millbridge
"	<i>Aurora</i>	Dodd	Pictou
"	<i>Busy Bee</i>	Smith	Londonderry
Schooner	<i>Morning Starr</i>	Paine	Cohasset

## 1876

Descript.	Vessels Name.	Capt. Name.	Port.
Ship	<i>Transit</i>	Dixon	Bristol
Bark	<i>Sussex</i>	Taylor	Littlehampton
"	<i>Florence</i>	Matson	Limerick
"	<i>Else Eschricht</i>	Witterhagen	Stetbin
"	<i>Queen of Hearts</i>	Brennan	St John, NB
Brig	<i>G P Sherwood</i>	Turner	Mirimachi
"	<i>C Von Platen</i>	Pauley	Stettin
"	<i>G A Coonan</i>	Adair	Andersson
"	<i>Afton</i>	Copp	Eastport
"	<i>Centaur</i>	Stanley	New York
"	<i>Nellie Antrira</i>	Mudgett	" "
"	<i>Shannon</i>	Moore	Millbridge
"	<i>John Sherwood</i>	Johdson	New York
"	<i>Mary A Doran</i>	Shaw	Windsor NS
Schooner	<i>J W Dean</i>	Patten	Parrsboro
"	<i>Island City</i>	Howes	Boston
"	<i>Alfred Brabrook</i>	Bunker	Fall River
"	<i>Mary A Coombs</i>	Coombs	Boston
"	<i>Kate Foster</i>	Sawyer	New York
"	<i>Mary A Holt</i>	Grant	Ellsworth
"	<i>Para</i>	Chase	Machias
"	<i>Pinta</i>	Dix	Phila

Descript.	Vessels Name.	Cap. Name	Port.
<b>Bark</b>	<i>Tamaris</i>	Petitot	Marseillas
"	<i>Tavilla</i>	Vulovich	Treiste
"	<i>Towy</i>	Davies	Stanely Wales
"	<i>Casco</i>	Penny	New York
"	<i>Victoria Perez</i>	Lindsley	" "
"	<i>Misti</i>	Riogean	Nantes
"	<i>Templar</i>	Bartlett	New York
"	<i>The Queen</i>	Melvin	Newcastle
"	<i>Hakor Jail</i>	Mossfield	Arendal
"	<i>Mary E Russel</i>	Nichols	Machias
"	<i>Robert Morrisson</i>	Fritzginger	Phila
"	<i>Resoluda</i>	Coll	Barcelona
"	<i>Nictaux</i>	Masters	Windsor
"	<i>Architect</i>	Daniels	Bristol
"	<i>The Frederick</i>	Roop	Fleetwood
"	<i>Eidern</i>	Lagerstadt	Sweden
<b>Brig</b>	<i>Hero</i>	Davidson	Parrsboro
"	<i>J R E</i>	Beeler	Bear River NS
"	<i>Somerset</i>	Haley	Windsor NS
"	<i>Flourence</i>	Wood	Halifax
"	<i>Aura</i>	Wood	Windsor
"	<i>George S. Berry</i>	York	Portland
"	<i>Forrent</i>	Neill	"
"	<i>Waterwitch</i>	Anderson	Baltimore
<b>Schooner</b>	<i>Frank A Magee</i>	Young	Ellsworth
"	<i>Setagawa</i>	Guptill	Gloucester
"	<i>Nancy Smith</i>	Boyd	New York
"	<i>Pioneer</i>	Hamilton	Boston
"	<i>Jonas Smith</i>	Standish	Bath
"	<i>Fred Grey</i>	Taylor	Ipswich
"	<i>Mary E Rankin</i>	Fuller	Boston

Des.	Vessels Name.	Capt. Name	Port.
Steam'	<i>Mercedita</i>	Jackaway	New York
"	<i>Harold</i>	Bonde	Copenhagen
"	<i>Lottie</i>	Stevens	Newcastle
"	<i>Glaniffer</i>	Graham	Glasgow
"	<i>Ferdinand Vandertaelen</i>	Cattow	Antwerp
"	<i>Severn</i>	Fawens	London
"	<i>Prior</i>	Brown	"
Bark	<i>Storfeust Constantine</i>	Grape	Uleaberg Rus
"	<i>Bien</i>	Hausen	Norway
"	<i>Rocket</i>	Pickering	New York
"	<i>Hornet</i>	Hopkins	" "
"	<i>Blackpool</i>	Nitchson	Fleetwood
"	<i>Marie B</i>	Giqueaux	Marseillas
"	<i>Kerdalia</i>	Olseu	Norway
"	<i>Aurora</i>	Albrechtsen	Sweden
Brig	<i>Tropie Bird</i>	Korff	New York
"	<i>Kate</i>	Fader	Halifax
"	<i>Zetland</i>	Hicks	Liverpool NS
"	<i>Nimble</i>	Clay	Swansea
"	<i>Janet</i>	Hausen	Denmark
"	<i>Kestrel</i>	Evans	Whitehaven
"	<i>Ubbina</i>	Roggenberg	Eneeden, Ger
"	<i>Adeline Richardson</i>	McFarland	Portland
"	<i>Mary Allerton</i>	Burgess	Boston
Schr	<i>Mary E Rankin</i>	Fuller	"
"	<i>Franklin</i>	Davis	New York
"	<i>A J Fabens</i>	Harris	Boston
"	<i>Uncle Tom</i>	Austin	Machias
"	<i>Lizzie M Stewart</i>	Perkins	Boston
"	<i>Wesley Abbott</i>	Johnson	Plymouth
"	<i>Altavelia</i>	Murch	Elsworth
"	<i>Iris</i>	Jones	Boston



## 1879

Description.	Vessels Name.	Capt Name.	Port
Steamship	<i>Netley Abbey</i>	Grant	Gardiff
"	<i>Braemar Castle</i>	Ayles	Glasgow
"	<i>Polaw</i>	Axo	Grimsby
Ship	<i>Britannia</i>	Hamilton	Liverpool
Bark	<i>Wilhelm Kisker</i>	Euler	Stettin
"	<i>Lizzie Merry</i>	Merry	New York
"	<i>Jennie Cushman</i>	Doane	Boston
"	<i>Stefanino</i>	Genta	Genoa
"	<i>Rosa</i>	Mundt	Stettin
"	<i>Edina</i>	Keane	St John NB
"	<i>Lucia</i>	Graese	Stettin
"	<i>Carlotta</i>	Tallo	Genoa
"	<i>Carolina Z</i>	Zolezzi	"
"	<i>Wetterhorn</i>	Skilling	Bath
"	<i>Francis B Fay</i>	Hardwick	Boston
"	<i>Aldolf Fredholm</i>	Loerin	Sweden
Brig	<i>Mary Allerton</i>	Burgess	Boston
"	<i>Wanderer</i>	Deyrana	St John NB
"	<i>Helios</i>	Landergreen	Sweden
"	<i>Nautilus</i>	Dauids	Lubeck
"	<i>Ernestine</i>	McAleoy	Portland
"	<i>Delta</i>	Doane	Halifax
"	<i>May</i>	Heisler	Lunenburg
Schooner	<i>Althea</i>	Blackman	Camden
"	<i>Mattie F</i>	Foster	Beveoley
"	<i>Lula Ammerman</i>	Higbee	New York
"	<i>Lettie</i>	Emery	P E Island
"	<i>Herbert E</i>	Cruise	New York
"	<i>Ada Barker</i>	Dobbin	" "
"	<i>Silverheels</i>	Milan	Ellsworth
"	<i>Laura A Webb</i>	Mimson	Baltimore

Description	Vessels Name.	Capt. Name	Port.
Steamship	<i>Renpor</i>	Osbon	Hartlepool
Ship	<i>City of Liverpool</i>	Whiteford	Liverpool
Bark	<i>North Carolina</i>	Buchan	"
"	<i>Carpione</i>	Boyle	Baltimore
"	<i>Claudine &amp; Joseph</i>	Perroquim	France
"	<i>Cape Horn</i>	Miller	Hamburg
"	<i>C L Pearson</i>	Harding	Boston
"	<i>Bjorn</i>	Bjornstadt	Norway
"	<i>Balgay</i>	Cowper	Dundee
"	<i>Bertha</i>	Schwarting	Bremen
"	<i>Sea Foam</i>	Wilkins	London
"	<i>Resolution</i>	Spandling	Boston
"	<i>Daniel Draper</i>	Sedgley	"
"	<i>Bremen</i>	Caldwell	WindsorNS
Brig	<i>Lorne</i>	Pye	Halifax
"	<i>Zigara</i>	LøBroeg	Jersey
"	<i>Bolke</i>	Eckhoff	Vegesack
"	<i>Helen A Holmes</i>	Eldridge	Boston
"	<i>Dart</i>	Colter	Halifax
"	<i>Hillegonda</i>	DeBoer	Amsterdam
"	<i>Lulan</i>	Johnson	Halifax
"	<i>Tempest</i>	Stewart	St John
"	<i>Fairfield</i>	Sott	WindsorNS
"	<i>Derby</i>	Davies	Aberyswith
"	<i>Dirigo</i>	Coffin	New York
Schooner	<i>Mary D Haskell</i>	Carter	Boston
"	<i>Catherina Maria</i>	Rosenberg	Russia
"	<i>Playfair</i>	Nickerson	Harborville
"	<i>Maridn</i>	Jarvis	Dartmouth
"	<i>Walter L Plummer</i>	Henrahen	Boston
"	<i>Jannie A Shepard</i>	Terhome	Baltimore

Descrip.	Vessels Name.	Capt. Name	Port.
Steamer	<i>LeCreasant</i>	Durand	La Rochelle
"	<i>Sea King</i>	Penny	Glasgow
"	<i>Crosby</i>	Evans	Newcastle
"	<i>Egadi</i>	Maccari	Genoa
Ship	<i>Nunquam Dormie</i>	Cousins	New York
Bark	<i>Abraham Lincoln</i>	Ostlund	Sweden
"	<i>Matilda C Smith</i>	Bulmer	St John NB
"	<i>Visconde de Livramento</i>	Cura	Brazil
"	<i>One</i>	Clay	Swansea
"	<i>Adda J Bonnar</i>	Bonner	Baltimore
"	<i>Claudina</i>	Correa	Oporto
"	<i>Florence Peters</i>	Mountfoot	Portland
"	<i>Casco</i>	Leavitt	New York
"	<i>Jose Marie</i>	Castello	Genoa
"	<i>F H Armstrong</i>	Cooper	Philadelph'ia
"	<i>Julia A Brown</i>	Nickerson	Boston
"	<i>Congou</i>	Jobson	Liverpool
"	<i>Plevna</i>	McPherson	P E Island
"	<i>Azor</i>	Ames	Boston
Brig	<i>Sarah Gilmore</i>	Clifford	New York
"	<i>Marie</i>	Tedford	St Martins
"	<i>Bella</i>	Barbaby	Windsor NS
"	<i>Candidezza Lauro</i>	Ferraio	Naples
"	<i>Otacilius</i>	Towse	St John NB
"	<i>I'lorence</i>	Flynn	Stonington
"	<i>Lucy W Snow</i>	Stone	Rockland
Schr.	<i>William Wilson</i>	Hammond	Marion
"	<i>W F Green</i>	Tracy	Fall River
"	<i>Stephen Bennett</i>	Douglas	Camden
"	<i>Ann Amelia</i>	McDonald	Halifax NS
"	<i>W H. Sargent</i>	Low	Selgwick
"	<i>Victor</i>	Coleman	New York

