

Technical and Bibliographic Notes / Notes techniques et bibliographiques

The Institute has attempted to obtain the best original copy available for filming. Features of this copy which may be bibliographically unique, which may alter any of the images in the reproduction, or which may significantly change the usual method of filming, are checked below.

L'Institut a microfilmé le meilleur exemplaire qu'il lui a été possible de se procurer. Les détails de cet exemplaire qui sont peut-être uniques, du point de vue bibliographique, qui peuvent modifier une image reproduite, ou qui peuvent exiger une modification dans la méthode normale de filmage sont indiqués ci-dessous.

Coloured covers/
Couverture de couleur

Covers damaged/
Couverture endommagée

Covers restored and/or laminated/
Couverture restaurée et/ou pelliculée

Cover title missing/
Le titre de couverture manque

Coloured maps/
Cartes géographiques en couleur

Coloured ink (i.e. other than blue or black)/
Encre de couleur (i.e. autre que bleue ou noire)

Coloured plates and/or illustrations/
Planches et/ou illustrations en couleur

Bound with other material/
Relié avec d'autres documents

Tight binding may cause shadows or distortion along interior margin/
La reliure serrée peut causer de l'ombre ou de la distorsion le long de la marge intérieure

Blank leaves added during restoration may appear within the text. Whenever possible, these have been omitted from filming/
Il se peut que certaines pages blanches ajoutées lors d'une restauration apparaissent dans le texte, mais, lorsque cela était possible, ces pages n'ont pas été filmées.

Additional comments:
Commentaires supplémentaires:

Some pages are cut off.

Coloured pages/
Pages de couleur

Pages damaged/
Pages endommagées

Pages restored and/or laminated/
Pages restaurées et/ou pelliculées

Pages discoloured, stained or foxed/
Pages décolorées, tachetées ou piquées

Pages detached/
Pages détachées

Showthrough/
Transparence

Quality of print varies/
Qualité inégale de l'impression

Continuous pagination/
Pagination continue

Includes index(es)/
Comprend un (des) index

Title on header taken from:
Le titre de l'en-tête provient:

Title page of issue/
Page de titre de la livraison

Caption of issue/
Titre de départ de la livraison

Masthead/
Générique (périodiques) de la livraison

This item is filmed at the reduction ratio checked below/
Ce document est filmé au taux de réduction indiqué ci-dessous.

10X	14X	18X	22X	26X	30X
<input type="checkbox"/>	<input type="checkbox"/>	<input type="checkbox"/>	<input type="checkbox"/>	<input type="checkbox"/>	<input checked="" type="checkbox"/>
12X	16X	20X	24X	28X	32X

CANADA LUMBERMAN

WEEKLY EDITION

The Lumberman Monthly Edition, 28 pages } \$1.00 PER YEAR { The Lumberman Weekly Edition, every Wednesday

THIS PAPER REACHES REGULARLY THE PRINCIPAL LUMBER MANUFACTURERS AND DEALERS THROUGHOUT CANADA, AND WHOLESALE BUYERS IN GREAT BRITAIN, THE UNITED STATES, AND OTHER FOREIGN MARKETS.

VOL. VIII.

TORONTO, CANADA, DECEMBER 17, 1902

No. 46

CANADA LUMBERMAN

PUBLISHED BY

The G. H. Mortimer Publishing Co.'s
of Toronto, Limited

Confederation Life Building - TORONTO.

Branch Offices:

IMPERIAL BUILDING MONTREAL
22 GREAT ST. HELEN'S, LONDON, E. C.

Weekly Lumberman, published every Wednesday contains reliable and up-to-date market conditions and tendencies in the principal manufacturing districts and leading domestic and foreign wholesale markets. A weekly medium of information and communication between Canadian timber and lumber manufacturers and exporters and the purchasers of timber products at home and abroad.

Lumberman, Monthly, A 24-page journal, discussing fully and impartially subjects pertinent to the lumber and wood-working industries. Contains interviews with prominent members of the trade, character sketches and portraits of leading lumbermen its special articles on technical and mechanical subjects are especially valuable to saw mill and planing mill men and manufacturers of lumber products.

WANTED AND FOR SALE

Advertisements will be inserted in this Department at the rate of 15 cents per line each insertion. When four or more consecutive insertions are ordered a discount of 25 per cent. will be allowed. This notice shows the width of the line and is set in Nonpareil type; 10 lines make one inch. Advertisements must be received not later than 4 o'clock p. m. on Tuesday to insure insertion in the current week's issue.

WHITE PINE FOR SALE

ONE AND A HALF MILLION FEET OF one, two and three inch White Pine Lumber, Mill Run, from good large Logs. PINE LUMBER COMPANY, Cartier, Ont., Canada.

FOR SALE—100,000 FEET DRY 1 INCH 1 1/2 MAPLE and 1 inch Birch. J. & R. MILLER, Markdale P. O.

WANTED—INCH CULL SOFT ELM AND Black Ash, also two-inch Birch, common and better. R. E. KINSMAN, Hamilton.

FOR SALE.

TWO GOOD TIMBER BERTHS IN ALGOMA. Area 36 sq. miles each. License covers all timber. THE NIPISSING LUMBER CO., LIMITED, Hamilton, Ont.

DESIRABLE FACTORY PROPERTIES FOR SALE

DESIRABLE FACTORY PROPERTIES ARE offered for sale in the thriving towns of Parry Sound and Warton, Ontario. Both are situated in excellent timber districts on Georgian Bay, with abundance of hardwood and softwood timber within easy reach.

The factory in Parry Sound is a first-class frame building, nearly new, on stone foundation and stone abutments, two storeys, 120x50 feet, with stone engine and boiler house 28x32 feet, containing a Wheelock engine of latest design, cylinder 11x28 inches, and suitable boiler built in and all ready for running, in use only four years and in perfect condition. Also an excellent steamboat wharf with twelve feet of water. With the factory are three acres of land on a public street with electric light and privileges of using town water, good fire protection.

The factory at Warton is also a frame building of two storeys, 50x26 feet, detached boiler house on shores of Colpo's Bay, with about three acres of land in the town of Warton. Full particulars furnished on application. Correspondence solicited. Apply to

KER & HARCOURT,
Parry Sound, Ont.

WANTED.

CARD POSTS, GIVE PRICE, QUANTITY, freight, &c. J. R. PARR, Amherstburg, Ont.

SAW MILL MACHINERY AND FORTY horse power engine and boiler for sale, cheap; all in good condition. Apply "Saw Mill" CANADA LUMBERMAN

WANTED—TEN THOUSAND CORDS Hard and Soft Wood; also same quantity of Slabs. SIMCOE WOOD AND LUMBER CO., 52 Yonge Street Arcade, Toronto.

HAVE YOU ANY STOCK WHICH YOU wish to sell? If so, make the fact known to probable buyers by placing an advertisement in the Wanted and For Sale Department. Address, CANADA LUMBERMAN, Toronto.

WANTED

SMALL BASSWOOD LOGS 8 TO 15 INCHES in diameter, 12 feet long. Can take unlimited quantities. Will give price per piece f. o. b. Write first instance, Box 101, CANADA LUMBERMAN.

STAVES FOR SALE.

175,000 30" Elm Meal Barrel Staves.
500,000 30" " " No. 2
500,000 28 1/2" Birch and Maple Cement Staves.
For immediate shipment.
T. H. DECKW & SONS,
Fenelon Falls, Ont.

TIMBER LANDS.

WE ARE PREPARED TO SELL EXTENSIVE and valuable Timber Areas, well wooded with White Pine and Spruce, together with Steam Saw Mills and all appliances for manufacturing Deals, etc. Properties contain immense quantities of Pulp-wood, and have deep water loading wharves. BISHOP & MONROE, St. John's, N. F.

FOR SALE

TIMBER LIMIT, 8 1/2 SQUARE MILES, LICENSE No. 204, season 1902-03. In the Township of Calvia, District of Nipissing, Province of Ontario, and Water Power Saw Mill on said limit, situated on the Amable du Fichard River and on the main line of the Canadian Pacific Railway, 1 1/2 miles east of Eau Claire. Apply to JOHN MACKAY, Renfrew, Ont.

IMPORTANT SALE

A FARM, 9 x 40 ARPENTS, WITH AGRICULTURAL implements complete; flour mill, modern door and wash factory; saw mill complete, shingle mill, planers; all these mills are operated by water power, and are situated on the river bank; booms; 16 miles of timber limits, of which 10 miles are well wooded with cedar and spruce; dams; camp with sleighs; horses, vehicles, saws, chains, cooking utensils, also private residence. For particulars apply to JOSEPH ROY, Riviere Blanche, Matane Co. Que.

WANTED

Young, hustling, vigorous English and French speaking Woods Superintendent. Must thoroughly understand economic timber and pulpwood logging and capable of handling workmen to advantage. High-class wages to high-class man. Don't apply if not entirely qualified. Address Box 114, CANADA LUMBERMAN.

WANTED—1 INCH, 1 1/2 INCH AND 2 INCH Soft Cork Pine Posts and ends, also deal ends. Apply Box 20, CANADA LUMBERMAN.

HALF INTEREST IN LIVE, UP-TO-DATE concern—sawmill, limits and lumber business in Ontario; large orders to fill. Box 27 CANADA LUMBERMAN.

WANTED—BASSWOOD, COMMON AND Better, must be full inch, winter cut. Are open to contract for the season's supply. Apply Box 20, CANADA LUMBERMAN.

WANTED—WHITE WINTER CUT MAPLE, must be straight in grain, 1 1/2 inch, 1 3/4 inch and 2 inch. Are open to place orders now. Apply Box 20, CANADA LUMBERMAN.

WANTED.

A COMPLETE LINE OF PLANING MILL Machinery, Shuffling, Hangers, Belting, etc. We would be pleased to hear from persons having Woodwork Machinery for sale. Apply Drawer 12, Hamilton.

Rails and Cars for Sale

T V MILLS 30 LB. STEEL RAILS IN GOOD order for relaying; Three Locomotives and Fifty Logging Cars, immediate shipment. For particulars apply to JOHN J. GARTSHORR, 83 Front Street West, Toronto.

CURRENT TRADE CONDITIONS.

ONTARIO.

Despite the nearness of the close of the year there continues to be a steady movement of lumber by rail. The demand from industrial establishments keeps up remarkably well and indicates that the stocks held by consumers are not large. Present prices of white pine offer little incentive to buyers to place orders for future delivery, yet some orders of this character are being booked by Toronto dealers. Both the pessimist and the optimist are to be found in the trade. The former bases his convictions on the reported large crop of pine logs and the belief that the crest of the present era of prosperity has almost been reached. The optimist, on the other hand, points out that wages are so exceedingly high and labor so scarce that the cut of logs is likely to be restricted thereby, and that nothing short of a general business depression, which is not likely to reveal itself, could restrain prices from maintaining their present level. The balance of opinion favors the hopeful view and a satisfactory trade for 1903.

Whatever may be said of pine, it is generally admitted that higher prices for hardwoods are likely to rule next year, as the advance that has taken place has not been proportionate with the appreciation in the value of lumber of the coniferous variety. Inquiries for basswood, oak and birch are quite numerous. Shingles have recently fluctuated somewhat in price, but the bulk of the sales of XXX white pine have been made around \$3.25 wholesale in Toronto. Dealers complain of the

difficulty in securing a regular supply of white pine shingles owing to the smaller quantity now manufactured.

MANITOWA AND BRITISH COLUMBIA.

The demand for lumber has fallen off somewhat sharply, due in large measure to severe weather. The building requirement for the year, however, is largely supplied, and a continuance of quiet conditions may be expected for the next few weeks.

Manufacturers of British Columbia shingles have decided to discontinue night shifts in all mills and in addition to curtail the daily output by twenty-five per cent. By this means the shingle production of the province will be curtailed by fully sixty per cent. This has been found necessary on account of the present scarcity of logs and high price of timber. It is said that manufacturers have been turning over their output at little or no profit.

GREAT BRITAIN.

Reports from the British market emphasize the prevailing disposition to postpone the closing of contracts for lumber until a universal basis of prices has been fixed. Neglect to do this in the past has resulted disastrously. Importers regard the prices asked by shippers as excessive, especially in regard to Baltic timber. No business of importance has yet been concluded with the North of Europe exporters, although usually half the first-open-water stocks of the following year have been placed by December. Contracting for Canadian lumber has been on a smaller scale than usual, although there seems to be less opposition to the prices asked by shippers. This is probably due to the lighter stocks of Canadian pine and spruce that are held at one or two of the leading importing centres. In the Surrey Commercial Docks at London the stock of pine deals on November 30th this year was 596 757 pieces, as compared with 692,520 pieces one year ago. The corresponding figures for spruce were 557,003 and 752,750 pieces. Battens and ends also show a decrease. There has been good buying at recent auction sales, for the reason that it is possible to purchase stock at a lower cost than orders can be placed for delivery next spring. It is pointed out that current prices leave the importer but a very small margin of profit. Second quality Quebec spruce, 3 x 4, is being sold liberally at £10 5s per standard. Indications point to lower prices for pit props. There is a continued enquiry for oak logs of large size, also for wagon planks.

UNITED STATES.

More interest is now centred in white pine dimension than in any other class of lumber. A short time ago the Mississippi Valley Lumbermen's Association declined to advance the price of dimension, on the ground that the conditions creating a scarcity were of an exceptional character and likely to be remedied in the near future. Nevertheless, individual firms are advancing their quotations. During the past season less dimension timber was manufactured than usual, for the reason that greater returns could be obtained by sawing the logs into inch lumber. Out of this unnatural ratio in prices grew the present shortage in dimension stock. In other respects the market is quiet and featureless. Upper grades are in good demand, while on the lower grades a concession of fifty cents per thousand is being offered by a few manufacturers who are anxious to realize. There has been very little buying of next year's stock and present appearances indicate that it will not start until after the turn of the year. A volume of business almost equalling that of the past season is generally predicted, and it is thought that prices of white pine will rule near the present basis. Hardwood prices, however, are expected to advance, as the stock at the mills is about 500,000,000 feet less than last year. Dealers are refusing orders for future delivery excepting on condition that the price then ruling is to be paid. There continues to be a strong demand for and marked scarcity of basswood. Efforts have been made to further advance the price of hemlock, but cutting of prices by some of the smaller concerns has discouraged this movement. The base price in New York city is \$16.50.

STOCKS AND PRICES.

XXXX white pine shingles are selling in the North Tonawanda market at \$3.75.

J. L. Black & Sons, of Sackville, N. B., expect to cut 4,000,000 feet of logs this winter.

The Hanbury Manufacturing Company, of Brandon, Man., are reported to have purchased timber limits in British Columbia.

Mershon, Schuette, Parker & Company have sold to Ontario parties all the lumber they had left on the mill docks at Midland, Ont., about 2,500,000 feet.

Watson & Todd, of Montreal, are reported to have secured the 1903 cut of McLachlin Bros.' mill at Annaprior. It will aggregate fully 40,000,000 feet, including white and red pine.

About eight hundred men are engaged this winter in the woods in the Port Arthur district, taking out saw logs, piles and ties. The North Shore Timber Company are not operating this season.

In Chicago prices of hemlock by carload are steady at \$13.50 to \$14, and sales from the yards are being made at \$15 to \$15.50 for ordinary lengths. In dimensions 2x12 and upwards the price at the yards ranges from \$17 to \$18.

The contract for scantling and curbing required by the City of Toronto during 1903 has been awarded to Reid & Company, of Esplanade street, as follows: 4x4 pine, \$17.39 per thousand; 4x10 pine, \$18.30; 4x4 cedar, \$15.39.

Davidson & Thackray, of Ottawa, last week received a cablegram that the

steamer Tartar Prince, en route from New York to Cape Town, had been burned at sea. This firm had on board the vessel a stock of doors, sash and flooring for South Africa, and are heavy losers through the fire.

During the past season there were received in the Saginaw river by water 60,247,059 feet of lumber, as compared with 100,000,000 feet last year. Considerably over 100,000,000 feet of this stock came from Ontario. Two rafts of logs, aggregating 6,000,000 feet, were received from Canada, the timber being cut on deeded lands.

According to the National Coopers' Journal, prices of cooperage stock are likely to advance in the near future. Staves are firmer with a rising tendency, and it is predicted that No. 1 staves will seek a higher level permanently before very long. Hoops are high in price and not likely to go back to former figures. Heading does not look so encouraging, but manufacturers are likely to take some action to secure a larger margin of profit. The corn crop of the United States is an important factor in bringing about and extending these conditions.

Messrs. S. P. Musson, Son & Company, under date of November 22nd, say that there have been no arrivals of either white pine or spruce within the fortnight, with the exception of 30,000 feet from the La-Have river, which was sold at \$26.15 for shipping, and \$21.65 for seconds. Both pine and spruce are wanted. Last sales of shingles have been made at \$4.89 to \$5.04 for Gaspé long cedar, \$1.82 for cedar laying, and \$1.65 to \$1.70 for spruce laying.

THE OTTAWA VALLEY.

(Correspondence of the CANADA LUMBERMAN.)

The representative of the CANADA LUMBERMAN to-day discussed prices with several local dealers. A careful scrutiny of the latest quotations in the market page showed but one change, that on pine 8 up s. c. sidings quoted at \$15 to \$17 per M. Latest figures are \$16 to \$19, with few, if any, selling.

Lumber manufacturers are at present engaged stocking up, and aside from the fact that standing stock is not to be had, it is difficult to get a promise on future cut. The manufacturers are endeavoring to ascertain "where they are at," and until they locate their bearings they will not hastily discuss contracts for future cuts. While some have already made contracts for next summer's cutting, they are quoting fancy prices simply to stand off would-be purchasers. Reliable reports show that a considerable quantity of the future cut was again secured by English buyers at standing prices. The demand coming from the Americans has and will continue to have a tendency to keep prices in Ottawa and district buoyant. Said one dealer, "As long as the Americans come over and purchase stock at the 'must have it at any cost' figures, the market will be unhealthy. Lumber is bringing more than it is really worth on this side, but we must rest content to be governed in this matter from across the line. Until manufacturing conditions change and it is found inexpedient to pay the ruling high price for Ottawa lumber, the local supply will command its own price."

Inquiries in other quarters went to show that high grade lumber is not to be had and ordinary stuff continues firm. Lath and shingles are scarce.

The most significant feature of the rather dull market, however, seems to be contained in the fact that English buyers have renewed orders for next summer's cut at prices as high as reigned a year back.

The arrival of winter will give an impetus to the movement of supplies to the limits and assist the jobbers in getting their stocks of pulp wood to the stations. The fact that snow held off several weeks later this year than last, seriously inconvenienced the movement of supplies to the distant limits. The lakes and rivers have all "taken" since the recent cold snap and the lumbermen are happy.

W.H. McAuliffe has again secured the cut of spruce at the St. Anthony Lumber Company's mill at Whitney. He thus controls all the cut of spruce of 1903.

The Upper Ottawa Improvement Company, at its annual meeting held last week, decided to build a fleet of five boats, two large steel tugs, two alligator tugs, and one small tug, a propeller. These boats will be placed in commission on lake Temiscamingue and the Upper Ottawa. With them the towing business hitherto carried on by Mr. Alexander Lumsden, ex-M.P.P., will be continued. This move will give the company entire control of the business on the Ottawa river. Debentures for \$120,000 will be issued to meet the cost of the extension of operations. The company elected the following officers: President, Hiram Robinson; secretary, G. B. Greene; directors, J. R. Booth, Hiram Robinson, Alex. Fraser, C. Berkeley Powell and F.P. Bronson.

OTTAWA, December 15, 1903.

LUMBERING OPERATIONS AROUND LITTLE CURRENT.

[FROM AN OCCASIONAL CORRESPONDENT.]

Messrs. J. & T. Conlon closed down their mill at Little Current about the 20th November, having cut out all their stock. This firm installed a band saw as auxiliary to their gang in the large mill and have also added an electric light plant. Their capacity for next season will be in the neighborhood of 20 million feet.

The W. & A. McArthur Company,

Orillia Planing Mills

and Sash and Door Factory
Near G. T. R. Station.

PLANING, MATCHING AND RE-SAWING
Done in any quantity. We guarantee satisfaction. Write for prices. Address,
8. POWERROY, Box 418, Orillia.

J. D. SHIER LUMBER CO., LIMITED,
BRACEBRIDGE, ONT.
MANUFACTURERS OF
LUMBER, LATH AND SHINGLES

Pine, Hardwood and Hemlock Floorings and Ceilings. Sash and Doors, Wood Turnings, etc. All Dressed Lumber Kiln Dried if desired. End Matched Flooring a Specialty.
Planing Mill in connection.

Bulmer McLennan & Co.

EVERYTHING IN

LUMBER AND TIMBER

Rough or Dressed Wholesale and Retail
Office and Yard:
571 Dorchester St., Montreal, P. Q.
Telephone Main 368 Correspondence Solicited

FINANCIAL.

TELEPHONE 992 MAIN.

Codes used, A-B-C. Fourth Edition; Morning & Neals & Western Union.

New York
Chicago
London
Paris

J. H. JEWELL & CO.
Bankers and Brokers

5 King Street West, Toronto, Canada.

Limited, closed their mill down about the 1st of November, having cut out their stock. They had a very successful season, cutting about 22 million feet by running day and night continuously from the 1st of May throughout the summer season without any hitch. They have 300 men in their camps at Beaverstone. At present they have four camps on their limit at Beaverstone, and expect to get out about 18 million of logs. They have also just closed a deal with Messrs. Sims Bros. for about 8 million feet more of high class logs, which they expect to get early in May. This will give them ample stock for their mill for the ensuing season.

The Anderson mill is now rented to Mr. C. Stewart, late of Honora, a practical mill man, who is open for contracts to saw. Messrs. Smith & Henderson will in all probability have their stock cut by Mr. Stewart.

Messrs. Sims Bros. have about 85,000 pieces on skids now and will get in over 100,000 logs. They have two camps and about 150 men employed.

Messrs. Smith & Henderson will probably get out one million feet of white pine, Norway and hemlock with one camp and 35 men.

Messrs. J. & T. Charlton are operating on McGregor Bay with one camp and 30 men, taking out cedar ties, posts and telegraph poles. This company also have a camp and about 60 men taking out pine logs north of Killarney. They will probably get out 3 million feet there for their Collingwood mill.

The McArthur Company have about 8 million feet on their dock, and J. & T. Conlon have about 2½ million of lumber to be shipped first thing in the spring.

DOORS AND MOULDINGS

A large buyer of Canadian white pine doors and mouldings is open to contract with a mill for their entire output of No. 3 and 4 qualities of doors and all their mouldings during 1902. Write in first instance to "Empire," CANADA LUMBERMAN.

THE CLEVELAND-SARNIA
SAW MILLS CO., LIMITED

SARNIA, ONT.

Manufacturers and
Wholesale Dealers in

Band-Sawed Timber
and Lumber
White Pine Lath

Daily capacity 250,000 feet

Special bills cut to order in

WHITE PINE

RED PINE

HEMLOCK

and FIR

CORRESPONDENCE SOLICITED.

CANADIAN LUMBER SHIPMENTS.

From Victoria, B.C.: Tug Albien, for Port Townsend, lumber, value \$1,200.

From Halifax, N. S.: 24,135 pcs. spruce deals, 4,831 bundles birch squares.

From St. John, N. B.: Str. Manchester City, for Manchester, 1,402,082 ft. deals, 10,589 ft. scantling, 18,671 ft. ends, by W. M. Mackay; 123,648 ft. deals, by George McKean. Str. Florence, for London, 12 maple blocks, by John Harrison & Sons, Owen Sound; 417 pcs. maple blocks, 2,712 bundles flooring blocks, 659 pcs. hardwood lumber, by William Thomson & Co. Schr. F. and E. Givan, for Quincy, 120,448 ft. boards, by Stetson, Cutler & Co. Schr. Abbie Keast, for Warren, 15,914 ft. scantling, 216,000 laths, 691,000 shingles, by Stetson, Cutler & Co. Str. Lake Erie, for Liverpool, 804,680 ft. deals, 10,290 ft. scantling, 62,897 ft. ends, 9,622 ft. birch plank, 590 ft. birch ends, 102 tons pine timber, 413 pcs. birch timber, by W. M. Mackay. Schr. Genevieve, for Boston, 111,407 ft. plank, 63,131 ft. scantling, by A. Cushing & Co. Schr. Tunisian, for Liverpool, 581,911 ft. deals, 66,450 ft. scantling, 9,552 ft. ends, 3,335 ft. boards, by W. M. Mackay; 349,316 ft. deals, 68,552 ft. scantling, 74,677 ft. boards, 12,077 ft. ends, 12,763 birch deals, 650 ft. birch scantling, 28,180 ft. hemlock deals, 122 ft. hemlock scantling, 3,720 ft. hemlock ends, by George McKean. Str. Dunmore Head, for Dublin, 499,519 ft. deals, by A. Cushing & Co.; 217,842 ft. deals, 2,140 ft. boards, 250 ft. ends, by George McKean. Schr. H. B. Homan, for Philadelphia, 1,800,000 laths, by J. H. Scammell & Co. Schr. Norman, for City Island, 1,820,000 laths, by Stetson, Cutler & Co.

From Montreal: Str. Manchester Shipper, for Manchester, 1,132 pcs. deals, by Watson & Todd. Str. Montfort, for London, 18,673 pcs. lumber, by Charlemagne Lumber Co.; 4,613 pcs. lumber by Dobell, Beckett & Co.; 12,420 by Cox, Long & Co.; 144 pcs. by McArthur Export Co.; 8,642 pcs. by Watson & Todd; 14 crates maple blocks, by C.P.R. Str. Melville, for Cape Town, East London, and Dur-

ban, 5,734 pcs. lumber, by W. & J. Sharples; 17,050 pcs. lumber, by McArthur Export Co.; 16,246 pcs. lumber, by Dobell, Beckett & Co. Str. Montfort, for Bristol, 7,122 pcs. lumber, by Charlemagne Lumber Co.; 1,763, pcs. lumber, by Dobell, Beckett & Co.; 1,935 ft. lumber, by Cox, Long Co.; 2,087 ft. lumber, by McArthur Export Co.; 20,827 ft. lumber, by Watson & Todd. Str. Manchester Commerce, for Manchester, 3,834 pcs. boards and ends, 351 pcs. deals, by Robert Cox & Co.; 3,156 pcs. boards, by W. & J. Sharples; 2,261 pcs. deals, by Watson & Todd; 1,416 bundles flooring, 660 bundles maple strips, 1,562 pcs. boards, 883 pcs. deals, by C.P.R.; 1,306 pcs. pine lumber, by G. T.R.; 8,499 pcs. deals by Charlemagne Lumber Co.; 5,007 bales wet pulp, by James McLaren & Co.

Messrs. Thompson, Blois & Kjellgren recently received a cargo of Bosnian whitewood at West Hartlepool, Eng., from Gravosa. It is the first direct shipment to that port, and consisted of 800 standards, a large quantity of the timber being from 18 to 26 feet in length.

For Sale

Cascapedia and Skimenac Rivers. Saw Mill, Timber Limits and Water Power. Price reasonable. H. M. SIMPSON, 29 Canada Life Building, 129 St. James Street MONTREAL

TELEGRAPH POLES WANTED

We buy all lengths. Write us for prices and you will see that by cutting your Cedar into Poles it will net you more than you can get out of it in any other way.

J. B. FARWELL & SON Successors to McCreary & Farwell. Orillia, Ont. Oswego, N.Y.

THE IMPERIAL LUMBER CO. LIMITED RED AND WHITE PINE DEALS SAWN LUMBER

MASON, GORDON & CO. WHOLESALE TIMBER Montreal, Quebec

Eastern Agents The B.C. Mills, Timber & Trading Co., Vancouver, B.C. DOUGLAS FIR Timber in any size or length supplied WRITE FOR PARTICULARS AND QUOTATIONS.

FOR SALE.

A number of very valuable pine and other timber limits on the north shore of Lake Huron and elsewhere for sale. Also limits bought and sold on commission and estimates given. For particulars, apply to P. McDERMETT, Box 177, South River, Ont.

CACHE BAY LUMBER INDUSTRIES.

Geo. Gordon & Co.,

Manufacturers of RED and WHITE PINE

Band - Gang LUMBER Circular

L AND LATH

CACHE BAY, Ont. C P R. 26 miles West North Bay.

CACHE BAY PLANING MILL CO.

... MANUFACTURERS OF ...

Cross Arms

MOULDINGS CEILING FLOORING WAINSCOTING SHEETING

And all kinds of Dressed Pine Lumber.

The Pearce Company

Limited MARMORA - - ONTARIO

WRITE US FOR PRICES ON HEMLOCK BILL STUFF.

THE ONTARIO LUMBER CO. LIMITED

Mills: North Bay, C.P.R. and G.T.R. Delivery.

MANUFACTURERS OF WHITE PINE LUMBER, LATH AND SHINGLES.

35 and 36 Home Life Building TORONTO, Ont. Mills: French River, Georgian Bay. Water Shipment Only.

A. F. BURY AUSTIN WHOLESALE LUMBER and TIMBER

CANADA PINE Room 507, Merchants Bank of Canada Building - MONTREAL, CANADA SPECIALTIES: Railway Bridge Timber and all kinds of Hardwoods; Ship Decking, Norway and White Pine, Dimension Timber, Norway Car Sills, Car Flooring, Telegraph Poles, Railway Ties, Oak and Whitewood, Planed and Rough Lumber, British Columbia Pine, Southern Pine, etc.; Birch Flooring, hollow back, and batted.

Sole Eastern Agent for The North Pacific Lumber Company, Limited, Bernet, B. C. Douglas Fir Timber in any size or length up to 90 feet long. Timber Planers face up to 24 inch x 30 inch Dry Kilns of large capacity. Rough and Dressed Lumber, Douglas, Fir and Cedar. WRITE FOR PARTICULARS AND QUOTATIONS.

Flooring from \$14.00 Ceiling " 12.00 SAMPLES BY MAIL KNIGHT BROTHERS CO. Burk's Falls, Ont.

F. MCGIBBON & SONS, PENETANGUISHENE ONT. Manufacturers of Pine, Hemlock and Hardwood Lumber, and dealers in Cordwood Hemlock Bills cut on short notice.

O. Dufresne, Jr. & Frere WHOLESALE LUMBER

Montreal - - Canada

have at present for sale at various points of shipment, by either rail or water route, on the Ottawa River, pine cuttings of different grades from seasons 1900 and 1901. Will quote upon small lots or heavy blocks

Correspondence Solicited

PINE LUMBER Get our Prices HARDWOOD LUMBER

THE ORILLIA EXPORT LUMBER CO.

High Grade Pine, Rough or Dressed

British Columbia Red Cedar Shingles a specialty

LATH ORILLIA, ONT. SHINGLES

Veneers, Hardwoods, Ash, Elm, Birch, Basswood—Clothboards—Cheese Box Bands and Rims.

THE PATENT CLOTHBOARD CO., of Perry Sound, Limited, Perry Sound, Ont

KILN-DRIED BIRCH FLOORING SHEETING CEILING

HEMLOCK SOFT & ROCK E.L.M. BASSWOOD BIRCH WHITE QUARTERS AND PLAIN SAWN MAPLE BLACKASH CEDAR PINE. Wholesale Hemlock Hardwood Lumber.

"We are now cutting ten million Hemlock 12 to 34 feet long, and we solicit your bill timber specifications!" OWEN SOUND, ONT.

Write for Quotations.

THE LONDON MARKET.

The pine deal market in London was very firm during November, and for special sizes and qualities rates have been obtainable which, if they are to become normal, must tend to check the consumption of the article in the long run. Messrs. Churchill & Sim say that for spruce deals this market has also been quite steady, but the demand has not been very free and there is no further rise. Oak timber and birch planks have been in fair de-

mand; the market for birch timber being adversely affected by the increasing supplies of the latter. For elm and ash timber there is no change to record. White pine timber has suffered in price whenever more than retail sales have been attempted.

From the St. Lawrence the import has been as follows:

	1902	1901
Pine deals...	1,338,000 pcs.	1,811,000 pcs.
Spruce deals...	2,704,000 "	3,743,000 "
Birch planks...	112,000 "	97,000 "

From New Brunswick:

	1902	1901
Pine deals...	357,000 pcs.	216,000 pcs.
Spruce deals...	619,000 "	502,000 "
Birch planks...	122,000 "	194,000 "

Current prices are as follows: St. Lawrence pine deals, 1st, bright and dry, regular sizes, £22 to £29 5s. per standard; oddments, £15 to £22 5s. 2nd bright and dry, regular sizes, £18 10s. to £23 5s; oddments, £13 10s. to £16 5s. 3rd, bright and dry, regular sizes, £11 10s. to £14 5s; oddments, £8 10s. to £11. 4th bright and dry, regular sizes, £10 5s.

to £11 10s; oddments, £8 5s. to £9 10s. St. Lawrence spruce deals, 1st, regular sizes, £13 to £15 per standard; 2nd, regular sizes, £9 15s. to £10; 3rd, regular sizes, £9 to £9 10s; batters, £7 to £8 5s. New Brunswick spruce deals, £9 to £10 per standard; oddments, batters and fourths, £7 5s. to £9.

Quebec white pine timber, 82s. 6d. to 120s. per load of 50 cubic feet; oak, 85s. to 150s.; elm 120s. to 165s.; ash, 97s. 6d. to 155s.; birch, 120s. to 195s.

New Brunswick birch, 100s. to 160s. per load.

Quebec
Montreal
Ottawa
Three Rivers

DOBELL, BECKETT & CO.,
TIMBER, DEAL and LUMBER EXPORTERS.

London, Eng. **RICHARD R. DOBELL & CO.,**
110 Cannon Street, E. C.

QUEBEC.

H. R. GOODAY & CO.,

SPRUCE AND RED PINE EXPORTERS
LONDON, ENG. AGENT... **FOY, MORGAN & CO.,**
104 and 105 Bishopsgate St. W., E. C.

Canadian Northern Railway

The building of this line has attracted thousands of settlers to the West, and for the purpose of enabling Westerners to come home for Christmas, the Canadian Northern Railway has put in effect a round trip rate of \$40.00, good for three months, from Winnipeg and other Manitoba points, to stations in Ontario and Quebec West of Montreal via St. Paul and Chicago. The popular route between the East and the West. With the closing of Lake season all shipments for Canadian Northern Railway stations west of Winnipeg must be routed all rail via Chicago. Through rates will be given on application to any agent of Grand Trunk or Michigan Central Railways or to the undersigned. Folder or Pocket Map of the Canadian Northern Railway will be sent upon application to
R. P. HILL, Trav. Freight & Pass Agent,
Room 305, Merchants Bank Bldg., Montreal, Que.
Wm. HILLIERS, General Eastern Agent,
Room 103 Arcade Union Station, Toronto.
GEO. H. SHAW, Traffic Manager,
Winnipeg, Man.

SGRIBNER'S LUMBER AND LOG BOOK

A handy book for Lumbermen. Gives Correct Measurements of Scantlings, Boards and Planks; Cubical Contents of Square and Round Timber; Doyle's Rules, and much other practical information.

PRICE 35 CENTS.

Address: **The Canada Lumberman**
TORONTO, ONT.

AUGER & SON - Quebec
PULP WOOD AND TIES

Bought at Any Station.
Also Dimension Timber, Sawed to Sizes, Telegraph Poles and Lumber.—Write Us.

MAITLAND, RIXON & CO. OWEN SOUND, ONTARIO.

Manufacturers and Dealers
LUMBER, LATH, TIES, POLES, SHINGLES, ETC.
Make a Specialty of Long Pine, Cedar and Hemlock Bill Stuff.

J. S. O'BRIEN, ANTIGONISH, NOVA SCOTIA
HEADQUARTERS FOR HARDWOOD LUMBER

CHAIR STOCK A SPECIALTY

Prompt Delivery Guaranteed. Mills running Summer and Winter. Regular Communication with British Ports all the Year. Correspondence Solicited



THE NEW LINE

Through the Spruce Forests of the Laurentian Mountains—between Quebec and Hawkesbury.
WATER-POWERS, TIMBER LIMITS AND ELECTRIC POWER FOR SALE. IDEAL PULP-MILL SITES.
Unexcelled Export Facilities at Quebec.
J. G. SCOTT, Genl. Mgr. **QUEBEC** GUY TOMBS, C. F. & P. A.

UNITED STATES MANUFACTURERS AND WHOLESALERS



WHITE PINE

Special Timber Bills, Red Cedar Shingles, Yellow Pine. We are in the market to buy from a car-load to the season's cut of any mill. We are also large buyers of White Pine Lath.

RIB RIVER LUMBER CO.
Yards and Main Office, TOLEDO, OHIO



We are in the Market

for from Ten to Twenty Million Feet of MILL CULLS, or what grades in the States as No. 4 and No. 5 White Pine Boards. Can take the entire product of a mill of these grades. Lumber must be delivered on Lake where we can get it with our own boats. Will take single lots of one million feet if necessary. Address

The Cleveland Box Co., Cleveland, Ohio.

WE MAKE A SPECIALTY OF
MAPLE FLOORING

—AND—
WHITE CEDAR SHINGLES

We would be pleased to receive your enquiries for our SPECIAL PRICES.



Owen T. Jenks Co.

WHOLESALE LUMBER
Cleveland, Ohio.
Mills at Onaway, Mich.

THE ROBERT H. JENKS LUMBER CO.
CLEVELAND, OHIO

MANUFACTURERS AND WHOLESALERS OF
YELLOW PINE, POPLAR, HEMLOCK AND HARDWOODS
Yellow Pine Timbers a Specialty

E. B. FOSS & CO.

Bay City, Michigan
WHOLESALE
White Pine and Norway Lumber

MIXER & CO.

BUFFALO, N. Y.
We are in the market for good five and six inch pine strips, dressing and better or saps. Stained pieces accepted if price is adjusted to cover them.

WILL PAY SPOT CASH

for any amount of 1", 1 1/2", 1 3/4" and 2" Birch you can furnish us. Write us promptly. Mention Bill No. 145.
Taylor & Crate
269 ELK STREET - BUFFALO, N. Y.

H. D. WIGGIN BOSTON, MASS.
89 STATE ST

will inspect at mill and PAY CASH for
LOG RUN
Elm, Ash, Bass and other Hardwoods
CORRESPONDENCE SOLICITED.

ONE DOLLAR

Will pay your subscription to the Weekly and Monthly CANADA LUMBERMAN
—FOR—
ONE YEAR

PROMPT CASH

—FOR—
ELM, MAPLE, BIRCH and other Hardwoods.
Think it will pay you to write. Have the best Poplar in the country.
THE ADVANCE LUMBER CO.
CLEVELAND, OHIO.
Mention CANADA LUMBERMAN.

W. O. Hughart, Jr.

GRAND RAPIDS, MICH.
BUYS BASSWOOD, ASH AND BIRCH LUMBER

FRANK A. CUTTING



BUYER OF
Hemlock Bark

And the only Dealer who can furnish Cutting Patent Bark Cars for Shippers.

Merchants Bldg, 79 Summer St., BOSTON, MASS.

CANADIAN MANUFACTURERS and WHOLESALERS

THE PEMBROKE LUMBER CO. LIMITED
Pembroke, Ont.

DIMENSION TIMBER A SPECIALTY. WRITE OR WIRE FOR QUOTATIONS. ROUGH AND DRESSED LUMBER IN ALL GRADES AND SIZES.
Car-Sills. Ship-planking. Pump-stock. Turning-squares, Etc.

JOHN HARRISON & SONS COMPANY, LIMITED

Manufacturers of Railway Ties and Timber, Pine, Hemlock, Cedar and Hardwood Lumber, Sash, Doors, Flooring and Siding. Highest grade of planing mill work. Maple flooring kiln dried, end matched, hollow backed, bored and polished.

HEAD OFFICE, SAW AND PLANING MILLS, OWEN SOUND, ONT.

WANTED
4 x 4 CEDAR FOR 1902 DELIVERY

We are open to make contracts for this class of stock 10 to 16 feet long to be cut and shipped through the year 1902 in from one to ten car lots; can take it dry or green.

Address, REID & CO., Esplanade Street, Toronto

When in the market for Lumber
Pine or Hardwood
Write or telephone us

THE OLIVER LUMBER CO., OF TORONTO, LIMITED
34 Canada Life Building, Toronto. Tel. Main 358.

RHODES, CURRY & CO., Limited
LUMBER MERCHANTS.
Yards at Amhers', Little Forks, Sydney and Halifax.
BUILDING MATERIAL of all kinds carried in stock. We are buyers of Ontario Basswood, Elm and Pine.
Amherst, N.S.

Sawn and Hewn Spruce, Hemlock, Pine and Birch Timber, Spruce and Pine Boards and Plank, Birch and Ash Boards and Plank, Flooring, Shingles, etc.
JAMES J. MURPHY, Bank of Merchants Building QUEBEC

BOOTH & SHANNON, BISCOTASING, ONT.
MANUFACTURERS OF
Red and White Pine Lumber, Lath and Shingles.
Shipments promptly attended to. Inquiries answered by return mail

R. Laidlaw Lumber Co.

Let Us Make Quotations.

18 Toronto Street, TORONTO.

JAS. PLAYFAIR & CO.

Manufacturers and Wholesale Dealers

LUMBER • LATH • SHINGLES

Contractors for Railway Supplies
BILL TIMBER a Specialty . . . MIDLAND, ONT

A. & P. WHITE
Manufacturers of and Dealers in.....

Sawn and Planed Lumber, Dimension Timber, Joisting
Car Sills, Car Flooring, Shingles and Lath.

PEMBROKE, ONT.

A quantity of 6x6, 6x8, 8x8, 8x10 and 10x10x18 ft. and up White Pine Dimension Timber, for sale

Robert Watt, Wiarton, Ont.

Manufacturer and Wholesale Dealer in lumber of all kinds Pine Lath, Cedar Shingles and Cedar Posts, Dressed Pine and Hardwood Flooring. Cedar and Hemlock Bill Stuff cut to order. Shipment by rail or water. Special lots for sale—A half car of 3-inch Tamarac, 1 car of 4x4, 1 car of 3x6, 1 car of 2x4 and 3x4, Maple, Beech and Birch Hearts suitable for machinery skids and car-stakes, 1 car of 1-inch Birch common and better, 3 cars of 1-inch Pine, mill run, White and Norway mixed, from 4 to 8" wide, 2000 small cedar posts from 3 to 4 1/2 inches at the top end.

The Siemon Bros.' Factories and Mills

Operated by CANADA FURNITURE MFRS., Limited.
WIARTON, ONT.
LUMBER MERCHANTS AND MANUFACTURERS

We manufacture and deal in Hard and Soft Wood Lumber and Timber, Ties, Cedar Posts and Shingles. Correspondence invited. Shipping facilities, Rail and Water.

WILLIAMSON & MORRISON
Mills at L'Orignal, Ont.  LUMBER
HEAD OFFICE:
30 St. John Street, MONTREAL, P.Q. WHOLESALE

Turner Lumber Co., Limited
MANUFACTURERS
LUMBER and LATH
Shipments by Rail or Water. Midland, Ont.



Cable Address :
GILMOUR, TRENTON
ESTABLISHED 1820

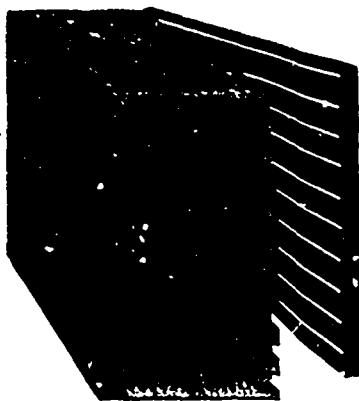
MAIN OFFICES:
TRENTON, ONTARIO

(A B C)
CODES LUMBERMAN'S
ZEBRA
ESTABLISHED 1820

GILMOUR & CO., LTD.

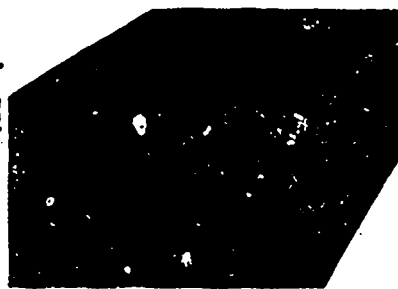
TRENTON, CANADA

BRANCH OFFICES IN: London, Eng. New York Chicago Glasgow Capetown, S. Africa Sydney, Australia

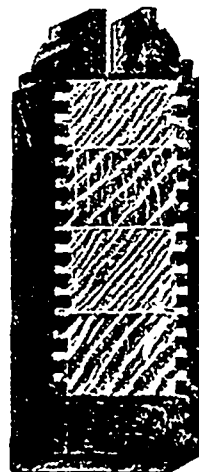


SECTION SHOWING PROCESS

PATENT
LUMBER



SECTION PATENT LUMBER



STILE SECTION

Saw Mills, Patent Lumber,
Door, Sash, Box
and Veneer Factories

Capacity of Mills and Factories
25,000,000 feet per year

OUTPUT: 300,000 DOORS Per Year.

Manufacturers of—SASH, DOOR and BOX FACTORY GOODS, LATH, SHINGLES, RAILROAD TIES, TELEGRAPH POLES and POSTS, JOINERY, FINE INTERIOR FINISH, HARDWOOD FLOORING, Etc. EGG CASES, EGG FILLERS. Write or Wire for Samples and Price Lists.

Responsible Agents Wanted in all Parts of the World

ORDERS PROMPTLY FILLED

GILMOUR & COMPANY, LIMITED
TRENTON, CANADA

THE BOSTON MARKET.

While the demand at Boston for spruce lumber is quiet, the supply is very small and prices hold firm in consequence: Ten and 12-inch dimensions, \$21 to \$22; 9-inch and under, \$19 to \$20; 10 and 12-inch random lengths, 10 feet and up, \$20.50; 2x3, 2x4, 2x5, 2x6, 2x7, and 3x4, 10 feet and up, \$17 to \$17.50; all other random, 9-inch and under, 10 feet and up, \$18 to \$18.50; 5-inch and up, merchantable boards, \$17; matched boards \$18 to \$20; out spruce boards, \$14; bundle furring, \$17.

Hemlock is quiet at steady prices: Boards, 12, 14 and 16 feet stock, \$14.50 to \$15 for good eastern; Pennsylvania, No. 1, \$18 to \$19; No. 2, \$15 to \$16.

For western pine there is a fair demand, with a moderate supply and firm prices: Uppers, 1 to 2 in. \$82 to \$85; 2 1/2 to 3 in. \$87 to \$88; 4-in. \$90; selects, 1 in. \$65; 1 1/4 to 1 3/4 in. \$70; 2-in. \$72; 2 1/2 to 3 in. \$80; 4 in. \$82; fine common, 1-in. \$62 to \$63; 1 1/4 to 1 1/2 in. \$65;

2-in. \$67.50; 2 1/2 to 3 in. \$72.50; 4-in. \$82.50; barn boards, \$23 to \$33; coffin boards, \$28 to \$32.

There is a firm market for hardwood lumber, with maple and quartered oak especially active: Quartered oak, \$63 to \$75; plain oak, \$42 to \$47; common and rejects, \$20 to \$25; red oak, plain, \$43; whitewood, \$45 to \$47; sap and common, \$30 to \$35; brown ash, \$41 to \$44; white ash, \$43 to \$46; maple, \$28 to \$30; end-dried white maple, \$38 to \$42; birch, \$27 to \$30; birch, 75 per cent. red, \$45 to \$50; elm, \$29 to \$31.

Shingles are firm, with a steady request: Extra cedar, \$3.50 to \$3.55; clear, \$3; second clear, \$2.50; extra No. 1, \$1.75 to \$1.80; British Columbia red cedar, 16-inch, five butts to 2 inches, \$3.50 to \$3.60; 18-inch, five butts to 2 inches, \$4.25; five butts to 2 1/4 inches, \$4.50.

Spruce clapboards are in small supply and prices hold very firm: Extra, \$42 to \$42.50; clear, \$40 to \$40.50; second

clear, \$37.50 to \$38; extra No. 1, \$30 to \$32. Laths are firm and unchanged: One and five-eighths inch, \$3.40 to \$3.45; 1 1/2 inch, \$3.25 to \$3.30.

TRADE OPENINGS.

The following were among the enquiries relating to Canadian trade received at the Canadian Government Office in London during the week ending 30th December, 1902. The names of the parties may be obtained from the publishers of this journal.

Particulars are required of Canadian

firms in a position to export hickory pick and handle handles; ash, pine, spruce and basswood broom handles; ash hay-fork and rake handles; shovel stems and D handles; lawn mowers and hay forks.

WANTED

MESSRS JOSEPH OWEN & SONS, Ltd., of Liverpool, Eng., are open to treat for regular supplies of large quantities of HARDWOOD LUMBER, and will be glad to hear from holders who have to offer WHITE ASH, WHITE OAK, SCALY BARK and SECOND GROWTH HICKORY, POPLAR and WALNUT in logs, planks and boards, also prime fresh BIRCH LOGS of large dimensions. Cable address, "Owen, Liverpool." A.B.C. Code used

ARTHUR RUSHFORTH
 Exporter of *Makogany* Logs and Lumber
Veneer Logs and Crotches, English Brown and Pollard Oak.
 12 Derby Road, LIVERPOOL

Cedar Cove Mill,
Vancouver, B.C.

E. H. HEAPS & CO.

Ruskin Mill,
Ruskin, B. C.

MANUFACTURERS OF

Lumber, Lath, Shingles, Doors, Mouldings, Etc.

SPECIALTIES:

AA1 HIGH GRADE CEDAR SHINGLES.

Cedar Bevelled Siding, Cedar Door and Sash Stock, cut to size, Cedar Finish, Base, Casing, Newels, Balusters, etc. Douglas Fir Timber up to 85 feet in length.



SPICER SHINGLE MILL CO., LIMITED

MANUFACTURERS OF

**Red . .
Cedar
Shingles**

VANCOUVER, B. C.

The HASTINGS SHINGLE MANUFACTURING CO., LIMITED.

Head Office: - - - VANCOUVER, B. C.

MILLS:

- Shingle, - - - Whatcom, Wash.
- " - - - Sumas, Wash.
- " - - - Carroll Siding, Wash.
- " - - - Nooksack, Wash.
- " No. 1 - Vancouver, B. C.
- " No. 2 - Vancouver, B. C.
- Saw Mill - - - Vancouver, B. C.
- Planing Mill - - Vancouver, B. C.

OUR SPECIALTY:

Dimension Shingles in Plain and Fancy Butts.

4 x 16 6/2 inch Butts	3 x 20 1/2 inch butts
5 x 16 6/2 " "	3 1/2 x 20 1/2 " "
6 x 16 6/2 " "	4 x 20 1/2 " "
4 x 16 5/2 " "	4 1/2 x 20 1/2 " "
5 x 16 5/2 " "	5 x 20 1/2 " "
6 x 16 5/2 " "	5 1/2 x 20 1/2 " "
4 x 18 5/2 " "	6 x 20 1/2 " "
5 x 18 5/2 " "	7 x 20 1/2 " "
6 x 18 5/2 " "	5 x 24 1/2 " "
7 x 18 5/2 " "	6 x 24 1/2 " "
4 x 18 5/2 1/4 " "	7 x 24 1/2 " "
5 x 18 5/2 1/4 " "	5 x 24 9/16 " "
6 x 18 5/2 1/4 " "	6 x 24 9/16 " "
7 x 18 5/2 1/4 " "	7 x 24 9/16 " "

BRITISH WOOD BROKERS AND IMPORTERS

FARNWORTH & JARDINE
Wood Brokers and Measurers

Cable Address: "Farnworth," Liverpool. 5 Dale Street and 7 Canada Dock, LIVERPOOL, ENG.

WRIGHT, GRAHAM & CO. Wood Brokers
Royal Bank Place, GLASGOW, SCOTLAND

Agents for the sale of CANADIAN WHITE PINE AND SPRUCE, cut to all sizes—and all kinds of Hardwoods in Log, Lumber and Dimension Stock.

Cable Address: SINGLETONS, Glasgow. A B C, A1 and Lieber's Codes.

SINGLETON, DUNN & CO. WOOD BROKERS
27 Union Street GLASGOW

F. A. Lightbody & Co. WOOD BROKERS
3 Gordon Street GLASGOW, SCOTLAND

Agents for CANADIAN WHITE PINE AND SPRUCE; Hardwoods in Log, Etc. Shipments handled to the best advantage to all ports in the United Kingdom.

Telegraphic Address—"WAINSCOT," GLASGOW.

BUCHANAN & FRENCH WOOD IMPORTERS AND MERCHANTS
Albert Saw Mills, BURNFREW, and St. Enoch Square, GLASGOW.

DEPOTS: BANKING, LIVERPOOL, NEWCASTLE-ON-TYNE, HULL AND BRISTOL

JONAS SMITH & CO.
Moulding and Joinery Manufacturers, Etc. Pine Doors, Mouldings

Telegraphic Address: MOULDING, LONDON. 92 to 98 Belvedere Road, LAMBETH, S. E.

C. LEARY & CO. Wood Agents and Brokers
4 Lombard Court, Gracechurch Street, LONDON, E.C., ENGLAND.

MORGAN, GELLIBRAND & CO. WOOD AGENTS
Established 1805

Cable Address: GELLIBRAND, London. 20 Bishopsgate St. Within, LONDON, E.C.

LOUIS BAMBERGER, 2 Broad Street Buildings, LONDON, E. C.
Importer of Pine, Spruce and all Canadian Wood Goods

Are Open to Contract for Glued-up BASSWOOD KEYBOARDS

ALFRED DOBELL & COMPANY WOOD AGENTS AND BROKERS

Liverpool and London Chambers LIVERPOOL, ENGLAND

SMITH & TYRER 14 Canada Dock, LIVERPOOL. WOOD AGENTS

Cable Address—"Walmer," Liverpool. Halifax, N.S., Office—SMITH, TYRER & CO., Metropole Bldg., Hollis St., Halifax, N.S.

GANT & KEMP TIMBER BROKERS
52 St. Enoch Square, GLASGOW

CHURCHILL & SIM TIMBER BROKERS
Cable Address: "CHURCHILL" London. 29 Clements Lane, London, E. C.

Cable Address: "INVIGORATE" Liverpool. Albert Buildings, 12 Pressons Row, Liverpool, ENGLAND

GELLIBRAND, HEYWOOD & CO. Wood Agents and Brokers
Cable Address: "GELLIBRAND, CARDIFF," Western Mail Chambers, CARDIFF

ARTHUR BEACHAM WOOD BROKER
Surveyor, Arbitrator and Valuer. OFFICES: 73 Que Square, Bristol. Avonmouth Dock and Bristol

BRYCE, JUNIOR & WHITE, TIMBER BROKERS AND AGENTS,
CABLE ADDRESSES: Trigon, Bristol. Tallisman, Glasgow. Moccasin, London.

WALCOT, LIMITED Wood Brokers and Agents
Cable Address: Walcot, London. 17 Gracechurch St., London, Eng.

A. KENNEDY BUYER OF BOX SHOOKS, SPRUCE AND PINE DEALS
Invites correspondence from Manufacturers for shipment per regular liners.

FELBER, JUCKER & CO. Lumber Importers
MANCHESTER ENGLAND
Invite offers from Lumbermen for Spruce Deals and Patterns, Spruce and Pine Flooring, Shooks, Sashes, Mouldings, Dowels, Boom Handles, Chair Stock, Seats, etc. or any Woods suitable for English Market.

JAMES W. SOUTHERN & SON MANCHESTER, ENGLAND
Are open to represent a firm of door manufacturers not at present represented in the North of England.

JOHN BURKE & CO. WOOD BROKERS and Merchants
BELFAST IRELAND.
Agents for Canadian white pine and spruce, cut to all sizes, and for all kinds of hardwoods in log, lumber and dimension stock.

THOMPSON, BLOIS & KJELLGREN ALL KINDS OF LUMBER AND LOGS
CASH ADVANCES MADE AGAINST SHIPPING DOCUMENTS
41 Corporation St., MANCHESTER
Waterloo Chambers GLASGOW
17 Gracechurch St., LONDON, E.C.
Brook 1, HAMBURG

CANADA ATLANTIC RAILWAY

Operating... OTTAWA & NEW YORK LUMBER LINE OTTAWA & BOSTON LUMBER LINE CANADA ATLANTIC TRANSIT COMPANY.

Shortest and Quickest Route from... OTTAWA, ROCKLAND, BAWKESBURY, ARR... FRIEDLAND, FERRIS, FERRY SOUND and other Lumber Centres, TO BOSTON, PORTLAND, NEW YORK, DETROIT, TORONTO, ALBANY, N.Y., MONTREAL, QUEBEC, SAGINAW, MICH., ST. JOHN, N.S.

Is it your wish...

To Purchase or Sell as quickly as possible A PARTICULAR LOT OF LUMBER A MILL PROPERTY SECOND-HAND MACHINERY

An Advertisement in the 'Wanted' and 'For Sale' Department of the CANADA LUMBERMAN WEEKLY EDITION Will secure for you a Buyer or Seller, as the case may be. Address, The Canada Lumberman, Toronto

Do You Ship in Car Lots?

If so you should have the RED BOOK The recognized authority on lumber credits It contains the names of concerns engaged in the following lines, together with their financial standing:

Lumber Lines—Cedar Posts, (Dealers and Manufacturers), Interior Blinds, Manufacturers, Moulding Manufacturers, Lumber Dealers, Wholesale and Retail, Planing Mills, Saw Mills, Sash, Door and Blind Dealers and Manufacturers, Stair Builders (Operating Mills), Wood Box Manufacturers, Hardware Dealers, carrying stock of sash, doors and blinds Manufacturers of Agricultural Implements, Cars, Carriages, Furniture, Chairs, Coffins, Decks, Ladders, Mowers, Organs, Parlor Frames, Pianos, Plows, Reapers, Refrigerators, School and Sewing Machine Furniture, Show Cases, Store and Office Fixtures, Trunks, Veneers, Wagons, Wood Floors and Mantles, Wood Pumps, Woodenware, Wind Mills. The Book is also a Bank Directory, Railroad Guide, Attorney's List, Express Directory, etc. Published in January and July and covers the United States and Manitoba. Thoroughly organized collection department in connection. Clinics collected anywhere. Try us

Lumbermen's Credit Association Established 1876. Suite 911 Tocoma Bldg. Mention this paper. CHICAGO

Please mention the CANADA LUMBERMAN when corresponding with advertisers.

DIRECTORY OF ADVERTISERS

is "Canada Lumberman" Monthly Edition. AXES Campbell Bros., St. John, N.S. Dundas Axe Works, Dundas, Ont. Warnock & Co., Jas., Galt, Ont.

BELTING Buchanan & Co., R. N., Montreal, Que. Canadian Oak Belting Co., Brockville, Ont. Durham Rubber Co., Bowmanville, Ont. Fleming, W. A., Montreal, Que. P. H. Wilby, Toronto. Goodhue, J. L. & Co., Danville, Que. Lewis, Rice & Son, Ltd., Representing Hoyt's Belting The Waterous Co., Brantford Young, J. S., Montreal

BABBITT METAL J. T. Wing, Detroit, Mich. Syracuse Smelting Works, Montreal, Que.

CLAY KILNS A. H. Andrews Co., Chicago, Ill. American Blower Co., Detroit, Mich. McEachern Heating & Ventilating Co., Galt, Ont. Standard Dry Kiln Co., Indianapolis, Ind.

LUMBERMEN'S SUPPLIES Eckardt, H. P. & Co., Toronto. Gartschore, John, Toronto. Rice Lewis & Son, Toronto. T. Iser & Sons, J. J., Peterborough, Ont. Woods, Jas. V., Ottawa, Ont.

LUMBERING TOOLS Motley Bros., Saginaw, Mich. Thos. Pink, Pembroke, Ont.

MACHINERY

Bradley, Levy & Weston Co., Toronto, Ont. Carrier, Laine & Co., Levis, Que. Drake, F. J., Belleville, Ont. Dunbar & Sons, Woodstock, N.B. Gordon Hollow Blast Grate Co., Greenville, Mich. Lloyd Manufacturing Co., Kenilworth, N.B. Madison Williams, Port Perry, Ont. Newry & Sons, E. R., Gravenhurst, Ont. Marshall & Co., W. S., Saginaw, Mich. McFarlane, Thompson & Anderson, Fredericton, N.B. P. Lavette & Co., Panetanguishene, Ont. Robb Engineering Co., Amherst, N.S. Rogers Iron Mfg. Co., Muskegon, Mich. Sawyer & Massey Co., Hamlet, Ont. Stant-Arthurson Machinery Co., Winnipeg. The E. Long Mfg. Co., Orillia, Ont. The Wm. Hamilton Mfg. Co., Peterboro', Ont. The Waterous Co., Brantford. The M. Garland Co., Bay City, Mich. Winnipeg Machinery & Supply Co., Winnipeg. Wickes Bros., Saginaw, Mich.

OILS Commercial Oil Co., Hamilton, Ont. Queen City Oil Co., Toronto.

PULLEYS Dodge Mfg. Co., Toronto, Ont.

PULP AND PAPER MILL MACHINERY Bertram, John & Sons, Dundas, Ont. The Jackson Machine Co., Sherbrooke, Que. The Waterous Co., Brantford.

PAPER AND PULP MILL ENGINEERS Drawson Company, New York. Wallace, Joe. H., C.E. Vogel, Chas. H., Ottawa.

SAW MANUFACTURERS

Burns, E. R., Saw Co., Toronto, Ont. Shurly & Dietrich, Galt, Ont. Roe & Co., R., New York. The James Robertson Co., Montreal, Que. The Ottawa Saw Co., Ottawa, Ont.

WHOLESALE LUMBER DEALERS

Edward Miles Lumber Co., Chicago, Ill. Weston, G. T. & Co., Chicago, Ill., U.S.A.

WIRE ROPE

Dominion Wire Rope Company, Montreal. Mussen & Co., Montreal, Que.

MISCELLANEOUS

Alexander Engraving Co., Can. Office and School Furniture Co., Preston, Ont. Cant Hooks and Peavies, McFarlane-Neill Mfg. Co., St. Marys, N.B. Embossed Mouldings, Boynton & Co., Chicago, Ill. Files and Ramps, Nicholson File Co., Port Hope. Lumber Houses, Teller & Clunie Co., Montreal. Lumber Hoist, John A. McGarry, Chicago, Ill. Lumber Underwriters, New York. Legal, Denton, Dunn & Bouldree, Toronto, Ont. Lumberman's Stoves, Adams Hall, Peterboro, Ont. Machine Knives, Peter May, Galt, Ont. Mill Dogs, Canton Saw Co., Canton, Ohio. Recording Thermometers, Helios-Upton Co., Peabody, Mass. Resaw for slabs, Wm. Duncan Montreal. Snow Plough and Road Maker, Wilkinson Plough Co., Toronto. Saw Sharpening Wheels, Hart Emery Wheel Co., Hamilton, Ont. The Bradstreet Mercantile Agency, New York and Toronto. Turbines, Madison Williams, Port Perry, Ont. Tool Handles, Mlyth Handle Works. Wire Mats, E. Greening Wire Co., Hamilton, Ont. Wagons, Walkerville Wagon Co.

CURRENT LUMBER PRICES--WHOLESALE

TORONTO, ONT.

Table with columns for CAR OR CARGO LOTS, HARDWOODS—PER M. FEET CAR LOTS, and various lumber types like 1 1/2 x 2 and 2 inch, 1 1/2 x 4, etc.

OTTAWA, ONT.

Table with columns for Pine, good sidings, Elm, rock, mill, Hickory, etc., and various lumber types.

Table with columns for 1x8 & 9 No. 1 barn, 1x8 & 9 No. 2, Lath, per M, etc.

Table with columns for Pine Shingles, Clear Butt, 8 inch, etc.

QUEBEC, QUE.

Table with columns for WHITE PINE—IN THE RAFT, SQUARE WHITE PINE, etc.

Table with columns for No. 1. White Pine, No. 2. White Pine, Hemlock, etc.

ALBANY, N.Y.

Table with columns for PINE, Uppers, 3 in. up, etc.

Table with columns for LATH, No. 1. White Pine, No. 2. White Pine, Hemlock, etc.

BUFFALO AND TONAWANDA, N.Y.

Table with columns for WHITE PINE, Uppers, 1 in., 1 1/2, 2 and 3, etc.

BAY CITY AND SAGINAW, MICH.

Table with columns for UPPERS AND SELECTS, PINE COMMON, B PINK COMMON OR NO 1 CUTTING, etc.

SHINGLES

Table with columns for Sawed Pine, ex. XXXX, Clear butts, Smooth, 6 x 18, etc.

SHINGLES

Table with columns for Bound butts, 6 x 18, Hemlock, Spruce, etc.