

**CIHM
Microfiche
Series
(Monographs)**

**ICMH
Collection de
microfiches
(monographies)**



Canadian Institute for Historical Microreproductions / Institut canadien de microreproductions historiques

© 1998

Technical and Bibliographic Notes / Notes techniques et bibliographiques

The Institute has attempted to obtain the best original copy available for filming. Features of this copy which may be bibliographically unique, which may alter any of the images in the reproduction, or which may significantly change the usual method of filming are checked below.

L'Institut a microfilmé le meilleur exemplaire qu'il lui a été possible de se procurer. Les détails de cet exemplaire qui sont peut-être uniques du point de vue bibliographique, qui peuvent modifier une image reproduite, ou qui peuvent exiger une modification dans la méthode normale de filmage sont indiqués ci-dessous.

- Coloured covers / Couverture de couleur
- Covers damaged / Couverture endommagée
- Covers restored and/or laminated / Couverture restaurée et/ou pelliculée
- Cover title missing / Le titre de couverture manque
- Coloured maps / Cartes géographiques en couleur
- Coloured ink (i.e. other than blue or black) / Encre de couleur (i.e. autre que bleue ou noire)
- Coloured plates and/or illustrations / Planches et/ou illustrations en couleur
- Bound with other material / Relié avec d'autres documents
- Only edition available / Seule édition disponible
- Tight binding may cause shadows or distortion along interior margin / La reliure serrée peut causer de l'ombre ou de la distorsion le long de la marge intérieure.
- Blank leaves added during restorations may appear within the text. Whenever possible, these have been omitted from filming / Il se peut que certaines pages blanches ajoutées lors d'une restauration apparaissent dans le texte, mais, lorsque cela était possible, ces pages n'ont pas été filmées.
- Additional comments / Commentaires supplémentaires: **This copy is a photoreproduction.**

- Coloured pages / Pages de couleur
- Pages damaged / Pages endommagées
- Pages restored and/or laminated / Pages restaurées et/ou pelliculées
- Pages discoloured, stained or foxed / Pages décolorées, tachetées ou piquées
- Pages detached / Pages détachées
- Showthrough / Transparence
- Quality of print varies / Qualité inégale de l'impression
- Includes supplementary material / Comprend du matériel supplémentaire
- Pages wholly or partially obscured by errata slips, tissues, etc., have been refilmed to ensure the best possible image / Les pages totalement ou partiellement obscurcies par un feuillet d'errata, une pelure, etc., ont été filmées à nouveau de façon à obtenir la meilleure image possible.
- Opposing pages with varying colouration or discolourations are filmed twice to ensure the best possible image / Les pages s'opposant ayant des colorations variables ou des décolorations sont filmées deux fois afin d'obtenir la meilleure image possible.

This item is filmed at the reduction ratio checked below /
Ce document est filmé au taux de réduction indiqué ci-dessous.

10x		14x		18x		22x		26x		30x	
<input type="checkbox"/>	<input type="checkbox"/>	<input type="checkbox"/>	<input type="checkbox"/>	<input checked="" type="checkbox"/>	<input type="checkbox"/>	<input type="checkbox"/>	<input type="checkbox"/>	<input type="checkbox"/>	<input type="checkbox"/>	<input type="checkbox"/>	<input type="checkbox"/>
	12x		16x	20x		24x		28x		32x	

The copy filmed here has been reproduced thanks to the generosity of:

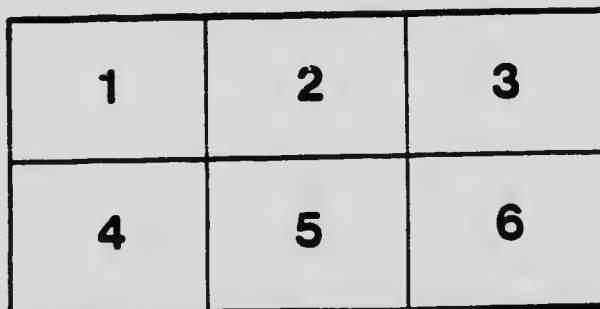
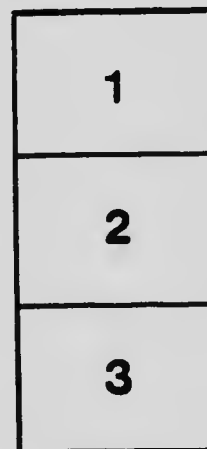
National Gallery of Canada,
Library

The images appearing here are the best quality possible considering the condition and legibility of the original copy and in keeping with the filming contract specifications.

Original copies in printed paper covers are filmed beginning with the front cover and ending on the last page with a printed or illustrated impression, or the back cover when appropriate. All other original copies are filmed beginning on the first page with a printed or illustrated impression, and ending on the last page with a printed or illustrated impression.

The last recorded frame on each microfiche sheet contains the symbol \rightarrow (meaning "CONTINUED"), or the symbol ∇ (meaning "END"), whichever applies.

Maps, plates, charts, etc., may be filmed at different reduction ratios. Those too large to be entirely included in one exposure are filmed beginning in the upper left hand corner, left to right and top to bottom, as many frames as required. The following diagrams illustrate the method:



L'exemplaire filmé fut reproduit grâce à la générosité de:

Musée des Beaux-Arts du Canada,
Bibliothèque

Les images suivantes ont été reproduites avec le plus grand soin, compte tenu de la condition et de la netteté de l'exemplaire filmé, et en conformité avec les conditions du contrat de filmage.

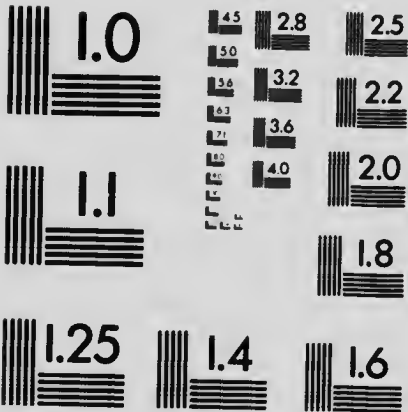
Les exemplaires originaux dont la couverture en papier est imprimée sont filmés en commençant par le premier plat et en terminant soit par la dernière page qui comporte une empreinte d'impression ou d'illustration, soit par le second plat, selon le cas. Tous les autres exemplaires originaux sont filmés en commençant par la première page qui comporte une empreinte d'impression ou d'illustration et en terminant par la dernière page qui comporte une telle empreinte.

Un des symboles suivants apparaîtra sur la dernière image de chaque microfiche, selon le cas: le symbole \rightarrow signifie "A SUIVRE", le symbole ∇ signifie "FIN".

Les cartes, planches, tableaux, etc., peuvent être filmés à des taux de réduction différents. Lorsque le document est trop grand pour être reproduit en un seul cliché, il est filmé à partir de l'angle supérieur gauche, de gauche à droite, et de haut en bas, en prenant le nombre d'images nécessaire. Les diagrammes suivants illustrent la méthode.

MICROCOPY RESOLUTION TEST CHART

(ANSI and ISO TEST CHART No. 2)



APPLIED IMAGE Inc

1653 East Main Street
Rochester, New York 14609 USA
(716) 482 - 0300 - Phone
(716) 288 - 5989 - Fax

ASSESSMENT SYSTEM.

INDEPENDENT ORDER OF FORESTERS

"The Best Fraternal Benefit Society in Existence."

FIVE CARDINAL POINTS

In the I. O. F. System of Fraternal Assurance.

LIBERAL POLICY
EQUITABLE SYSTEM
CAPABLE MANAGEMENT
PROMPT SETTLEMENT OF CLAIMS
NO ASSESSMENTS AT DEATH

Membership - - - - 180,000
Assurance Carried - \$210,000,000.00
Benefits Paid - - - 9,200,000.00
Surplus Accumulated - 4,500,000.00

Table of Premium Rates CAREFULLY GRADED and VERY
MUCH LOWER than those of Old Line Companies, but
MATHEMATICALLY SAFE. For further infor-
mation respecting the I.O.F. apply to any
officer or member.

HEAD OFFICE:

The Temple Building, Cor. Richmond and
Bay Streets,

TORONTO, CANADA.

Office for Europe: 24 Charing Cross, London, Eng.

Office for United States: 481 E. 3rd St., Chicago, Ill.

Oronhyatekha, M.D., S.C.R. John A. McGillivray, K.C., S.S.
Toronto, Canada. Toronto, Canada.

CATALOGUE—THIRTEENTH
ANNUAL EXHIBITION OF
THE WOMAN'S ART ❖ ❖ ❖
ASSOCIATION OF CANADA ❖
HELD AT THE GALLERY OF
THE ASSOCIATION, CONFED-
ERATION LIFE BUILDING, ❖
COR. YONGE AND ❖ ❖ ❖ ❖
RICHMOND STREETS ❖ ❖ ❖

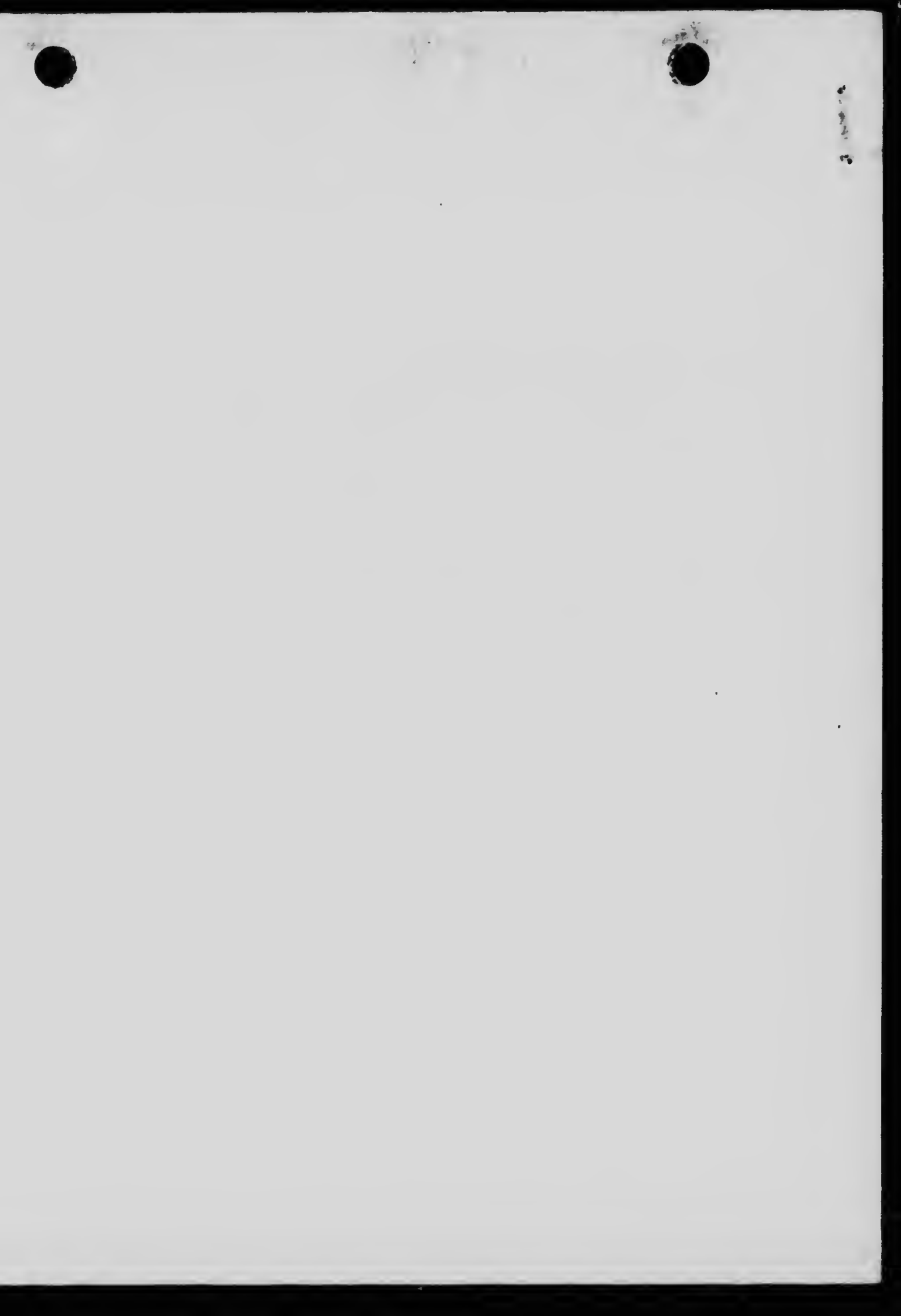
M C M I



C
N6549
W82
1901

PRIVATE VIEW, Tuesday, March 26,
at 3 p.m. Exhibition open from 10
a. m. to 10 p. m. every day from
March 27 to April 13, 1901. Admis-
sion, 25 cents, including Catalogue.





1
OFFICERS 1900-1901

Hon. President :

Her Excellency, the Countess of Minto.

President :

Mrs. Dignam.

Elected Vice-Presidents :

Mrs. Hemsted.

Mrs. J. E. Elliott.

Ex-Officio Vice-Presidents :

Miss M. M. Phillips, President, Montreal Branch.
Miss Galbreath, President, Hamilton Branch.
Miss K. Cochrane, President, Brockville Branch.
Miss Ermatinger, President, St. Thomas Branch.
Miss M. Barry-Smith, President, St. John, N.B., Branch.
Miss Agnes Maule Machar, President, Kingston Branch.
Mrs. Weir, President, Portage la Prairie Branch.
Mrs. Irwin, President, Ottawa Branch.

Honorary Recording Secretary :

Mrs. W. H. Clemes, 724 Spadina Ave.

Honorary Corresponding Secretary :

Miss Emily F. Denison, 32 Russell Street.

Honorary Treasurer :

Miss F. Lindsay, 72 Homewood Ave.

Exhibition Committee :

Mrs. Fletcher Snider, Convener.

LIST OF EXHIBITORS

E. A. KNOWLES	Toronto.
L. O. ADAMS	Toronto.
AUGUSTA ANDERSON	Collingwood.
H. E. BASTEDO	Milton.
E. UNIACKE BAYLEY	Toronto.
E. B. CLARK	Toronto.
M. BERTHA W. CLEMES	Toronto.
M. E. DIGNAM	Toronto.
HARRIET B. DRUMMOND	Toronto.
J. E. ELLIOTT	Toronto.
ANNA GORMLEY	Watford.
EDITH HEMMING	Toronto.
BEATRICE HOWIE	New York.
MARIE H. HOLMSTEAD	Toronto.
M. E. IRWIN	Montreal.
AGNES JOHNSON	Toronto.
J. M. JOPLING	Toronto.
ESTELLA KERIE	Toronto.
HENRIETTA HANCOCK	Toronto.
F. L. LINDSAY	Toronto.
MARION LONG	Toronto.
M. LOGAN	Toronto.
HATTY MACCURDY	Toronto.
IDA MITCHELL	Tustin, Cal.
MARION H. NELSON	St. Catharines.
MARY LEWIS	Toronto.
M. M. PHILLIPS	Montreal.
S. J. PROCTOR	Toronto.
MATILDA S. SAMUELS	Toronto.
GERTRUDE SPURR	Toronto.
M. J. SANBORNE	Montreal.
A. SWINDLEHURST	Toronto.
F. E. SEGSWORTH	Toronto.
A. BLAIR THOMAS	Toronto.

CATALOGUE.

For Prices enquire of Secretary. Offers will be submitted through her to the Artists.

OILS.

NO.		PRICE.
H. E. BASTEDO, Milton.		
1	PORTRAIT STUDY—"FLO"	\$
2	ELM PARK, WINNIPEG	10 00
3	ROSES (PASTEL)	6 00
E. UNSACKER BAVLEY, Toronto.		
4	HEAD OF AN ITALIAN GIRL	15 00
5	" " " "	12 00
E. B. CLARK.		
6	ROSES ON BRASS TRAY	25 00
7	STUDY OF STILL LIFE	25 00
M. E. DIONAM, Toronto.		
8	RIVER SCENE, HOLLAND	80 00
9	"LOWLANDS"	80 00
10	"A GREY DAY" (INTERIOR)	100 00
11	"PEONIES"	75 00
12	"INTERIOR, HOLLAND"	100 00
13	"A SUMMER DAY"	80 00
14	"THE NORTH SEA DUNES"	80 00
15	"A DIFFICULT MOMENT" (HOLLAND INTERIOR)	75 00
16	"DUTCH INTERIOR"	80 00
E. A. KNOWLES, Toronto.		
17	MISTY MEADOWS	20 00
18	EVENING GLOW	15 00

HENRIETTA HANDECK, Toronto.

19	AN OLD NURSE	25 00
20	PORTRAIT OF A B. S. S. GIRL	(Not for sale.)

BEATRICE HOWIE, New York, U.S.A.

21	MELODIE	250 00
22	MADONNA	500 00

AGNES JOHNSON, Toronto.

23	SCENE AT TOSOCO	20 00
24	BUSY FINGERS	15 00

MARION LONG, Toronto.

25	STUDY OF GRAPES	15 00
----	-------------------------	-------

F. L. LINDSAY, Toronto.

26	STILL LIFE	15 00
----	--------------------	-------

HATTIE R. MacCURDY, Toronto.

27	ROSES	25 00
----	---------------	-------

IDA MITCHELL, Tustin, California.

28	ROSES	40 00
----	---------------	-------

N. McLEAS, Toronto.

29	PORTRAIT (DR. MORSON)	
30	"JIP"	

MARION H. NELSON, St. Catharines, Ont.

31	OLD FIRE-PLACE ON LONG ISLAND	45 00
32	AT INDIAN LORETTE	15 00

FANNY G. PLIMSOLL, Montreal.

33	A LANDSCAPE IN HOLLAND	
----	--------------------------------	--

M. M. PHILLIPS, Montreal.

34	THE ROAD TO THE SEA	50 00
35	NORWEGIAN VESSELS	25 00

GERTRUDE E. SPURD, A.R.C.A., Toronto.

36	BOAT MENDING, CAPE COD	40 00
37	OLD JETTY, CAPE COD HARBOUR	30 00
38	CAPE COD SAND DUNES	40 00

A. BLAIR THOMAS, Toronto.

39	WHEN THE TIDE IS LOW	12 00
----	------------------------------	-------

WATER-COLOURS.

L. O. ADAMS, Toronto.

40	OLD HOUSE ON HUMBER	\$10 00
41	AMONG THE CHIMNEY POTS	5 00
42	HOUSE ON THE HILL-TOP	5 00
43	THE BRIDGE AT LAMBTON MILLS	8 00
44	THE HUMBER RIVER-BED	10 00
45	THE BLACK ROAD ON THE HUMBER	5 00
46	THE POST OFFICE AT LAMBTON MILLS	3 50
47	DOWN THE RIVER	3 50
48	THE HAUNTED HOUSE	6 00
49	OLD COACHING HOUSE	10 00

AUGUSTA ANDERSON, Collingwood.

50	PINK CHRYSANTHEMUMS	(Not for sale.)
51	A RIVER SCENE	(Not for sale.)

M. BERTHA W. CLEMES, Toronto.

52	BEYOND THE VILLAGE LAAREN	20 00
53	A VILLAGE STREET, LAAREN	20 00
54	SUNSET KATWIJBE-AAU-ZEE	10 00
55	THE DUNES, LAAREN	20 00

H. D. DRUMMOND, Toronto.

56	"AN IDEAL"	15 00
----	--------------------	-------

R. L. ELLIOTT, Toronto.

57	IN THE BOUDOIR	20 00
58	IN THE KITCHEN GARDEN	20 00
59	PENSIVE THOUGHTS	15 00
60	BETHLEHEM COSTUME	15 00
61	STUDY OF AN OLD WOMAN	
62	STUDY OF A HEAD	
63	DUTCH FIGURE	
64	SPRING TIME	
65	JERUSALEM COSTUME STUDY	
66	THE MILKMAID	
67	TERESA	
68	THE LACEMAKER	

ANNA GORMLEY, Watford, Ont.

69	FRENCH-CANADIAN FARM-YARD	15 00
70	CARNATIONS	10 00

MARIE H. HOLMESTEAD, Toronto.

71	SHEEP ON LIME-STONE ROAD	10 00
72	CHATEAU RICHER BABIES	5 00
73	COTTAGE AT STE. ANNE DE BEAUPRE	5 00
74	THE ROAD OVER THE BROOK	4 00
75	ON THE CREEK	4 00
76	HAYING AT STE. ANNE'S	3 00
77	NIAGARA FALLS	7 00
78	LAST SISTER ISLAND	8 00
79	PARRY SOUND	3 00
80	A WINDY DAY	6 00

M. E. IRWIN, Montreal.

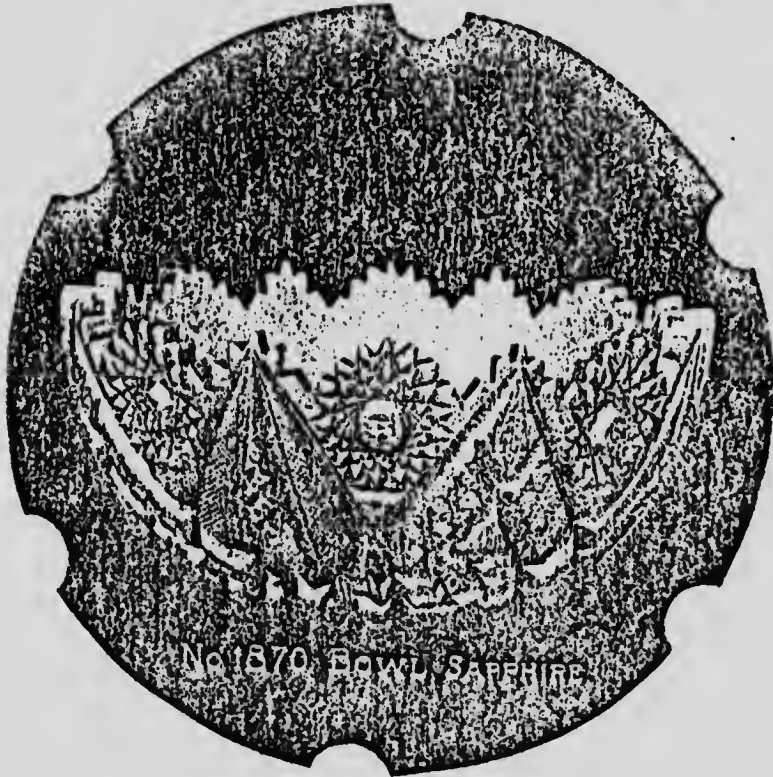
81	VAULTS IN CHATEAU DE RAMEZAY	10 00
----	--------------------------------------	-------

AGNES JOHNSON, Toronto.

82	WATER COLOUR STUDY	10 00
83	TOBAGO CREEK	12 00
84	FIRESIDE STUDY	10 00

	ESTELLE KERR, Toronto.	
85	BY THE FIRESIDE	10 00
	F. L. LINDSAY, Toronto.	
86	STILL LIFE (Pastel)	10 00
	M. LOGAN, Toronto.	
87	AN OLD HABITAU AT BEAUPRE	(Not for sale.)
88	MARTELLO TOWERS, PLAINS OF ABRAHAM	10 00
89	COVE ROAD, QUEBEC	10 00
	MARY PLEWES, Toronto.	
90	CHRYSANTHEMUMS	15 00
	S. J. PROCTOR, Toronto.	
91	CHRYSANTHEMUMS	15 00
92	APPLE BLOSSOMS	10 00
	M. M. PHILLIPS, Montreal.	
93	INCH ARRAN BEACH	15 00
	A. SWINDLERBURST, Toronto.	
94	WINTER VEGETABLES	
95	FRUIT STUDY	
	M. J. SANBORN, Montreal.	
96	THE GLEN, WESTMOUNT	10 00
97	LA BOULE ROCK, LITTLE METIS	6 00
	F. G. SEGSWORTH, Toronto.	
98	SKETCH AT THE HUMBER	6 00
99	SKETCH AT THE HUMBER LOOKING EAST	6 00
100	SUNSET	5 00
101	LANDSCAPE	5 00
102	LANDSCAPE	5 00
103	BARLEY FIELD	5 00
		(Not for sale.)

RICH CUT GLASS



We have the only glass-cutting factory in Canada. Our productions are equal to those of the most celebrated factories of the world, and the cost is just about half.

GOWANS, KENT & CO.

— TORONTO

10 00
 10 00
 for sale.)
 10 00
 10 00
 15 00
 15 00
 10 00
 15 00
 0 00
 0 00
 0 00
 0 00
 0 00
 0 00
 0 00
 o.)

M. S. SAMUELS, Toronto.

104	HER FIRST COMMUNION	25 00
105	LIGHTING HIS PIPE	5 00
106	GRANDMOTHER	5 00

A. BLAIR THOMAS, Toronto.

107	SILVER BIRCHES	15 00
108	HARVEST TIME	15 00
109	RICHMOND CASTLE	5 00
110	EVE-TIDE	18 00
111	COTTAGE, BROUGHTON SPOUT, ENGLAND	12 00
112	THE PALE MOON	25 00

MINIATURES.

EDITH HEMMING, Toronto.

113	OLD MINIATURE OF JOHN HEMMING, 1812. (Artist unknown)	
114	CASE OF MINIATURES	

E. M. JOPLING, Toronto.

115	MINIATURE ON IVORY--QUEEN OF ITALY	\$25 00
116	MINIATURE ON IVORY--PORTRAIT	
117	MINIATURE ON IVORY--PORTRAIT	
118	MINIATURE ON VELLUM--FANCY PORTRAIT	5 00
119	MINIATURE ON VELLUM--PORTRAIT	
120	MINIATURE ON VELLUM--PORTRAIT	

H. D. DRUMMOND, Toronto.

121	MRS. HINCHLEY--IVORY MINIATURE	
122	MISS MacQUALTER--IVORY MINIATURE	
123	MRS. MORRISON--IVORY MINIATURE	
124	MR. D.--IVORY MINIATURE	

Fairweather

Ladies' Hats

For the between times—just after Winter weather and just before Spring—the plain Fedora, the Crush hat, the neat Soft hat, is just the most sensible and serviceable thing for a lady to don.



We're showing a splendid lot of them in the newest English and American shapes and shades. Exclusive designs, every one of them, and quality guaranteed the highest. Ultra Stylish, but not

extreme. A collection that will appeal to any lady seeking the "Not how cheap, but how good."

H. J. Young & Co.

July/76

